

8

7

6

5



4

3

2

1

D

D

C

C



B

B

A

A

8

7

6

5



4

3

2

1

CABLE ASM-STARTER (RED)	141415-32-058
CABLE ASM-COACH BATTERY (YEL)	141415-52-014
CABLE ASM-COACH BATTERY GND (BLK)	133566-12-008
CABLE ASM-GENERATOR (GRN)	141415-42-033
CABLE ASM-GENERATOR GND (BLK)	133566-12-008
CABLE ASM-STARTER,EXT (RED 2)	141415-32-007
LEVELING SYSTEM GROUND CABLE (BLK)	133566-12-005
LEVELING SYSTEM POWER CABLE (BLU)	141415-22-022

60M

60M

60M HYDRAULIC LEVEL JACKS-AUTO

265 CODES/STANDARDS-CSA/CMVSS

1B1 CODES/STANDARDS USA

1B1 265



COPYRIGHT 2016 WINNEBAGO INDUSTRIES, INC.

DSNR:		ALL DIMENSIONS ARE IN MILLIMETERS		
DFFR:		MATERIAL:		
UNSPECIFIED TOLERANCES:				
WHOLE DIM (X)	: 3			
ONE-PLACE (X.X)	: 1.5			
TWO-PLACE (X.XX)	: 0.50			
ANGLE	: 1°			

REFER TO ES0018 FOR FASTENER TIGHTENING GUIDELINES

WEIGHT: (LBS) FIRST USED: 17 331G

FOR ELECTRICAL TORQUE SPECIFICATIONS SEE DWG NO. 128783-01-000

FOR ELECTRICAL CALLOUTS SEE DWG NO. 121339-01-000

DESCRIPTION: BATTERY INSTL

SHEET: 1 OF 3 ITEM/PART NO: 000025155 / 31519501000 REV

REF: 1 22-Mar-2017

8

7

6

5

4

3

2

1

D

D

C

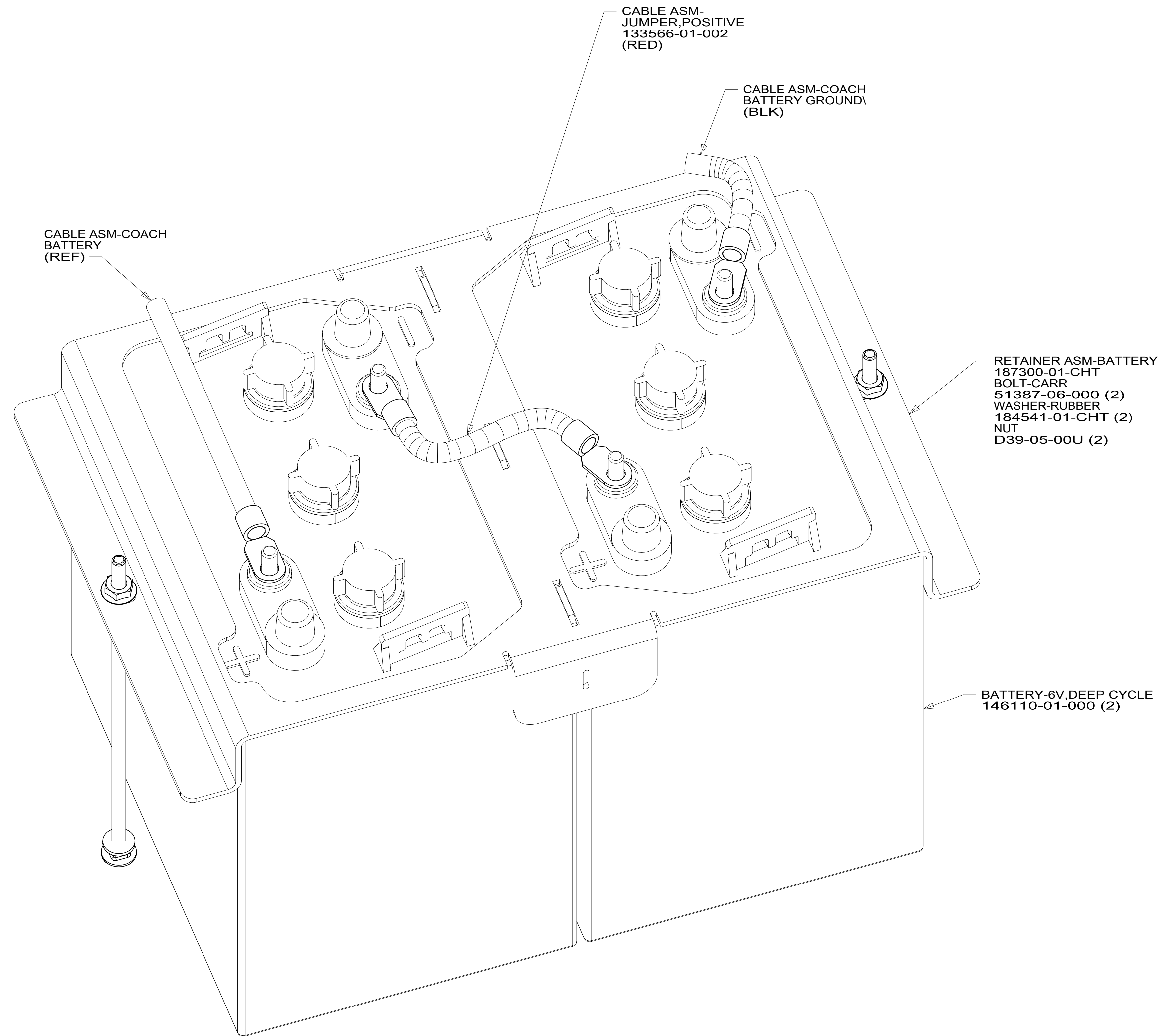
C

B

B

A

A



VIEW BA

FOR ELECTRICAL  
TORQUE  
SPECIFICATIONS  
SEE DWG NO.  
128783-01-000

FOR  
ELECTRICAL  
CALLOUTS  
SEE DWG NO.  
121339-01-000

- 16Y FORD CHASSIS - 14,500#\_GVWR
- 165 FORD 11,500# GVWR 5.4L ENGIN
- 644 GREAT ALASKAN RENTAL PACKAGE
- 265 CODES/STANDARDS-CSA/CMVSS
- 1B1 CODES/STANDARDS USA

1B1 265 644 165 16Y

DESCRIPTION:		
<b>BATTERY INSTL</b>		
SHEET:	ITEM/PART NO.:	REV
2 OF 3	000025155 / 31519501000	

8

7

6

5

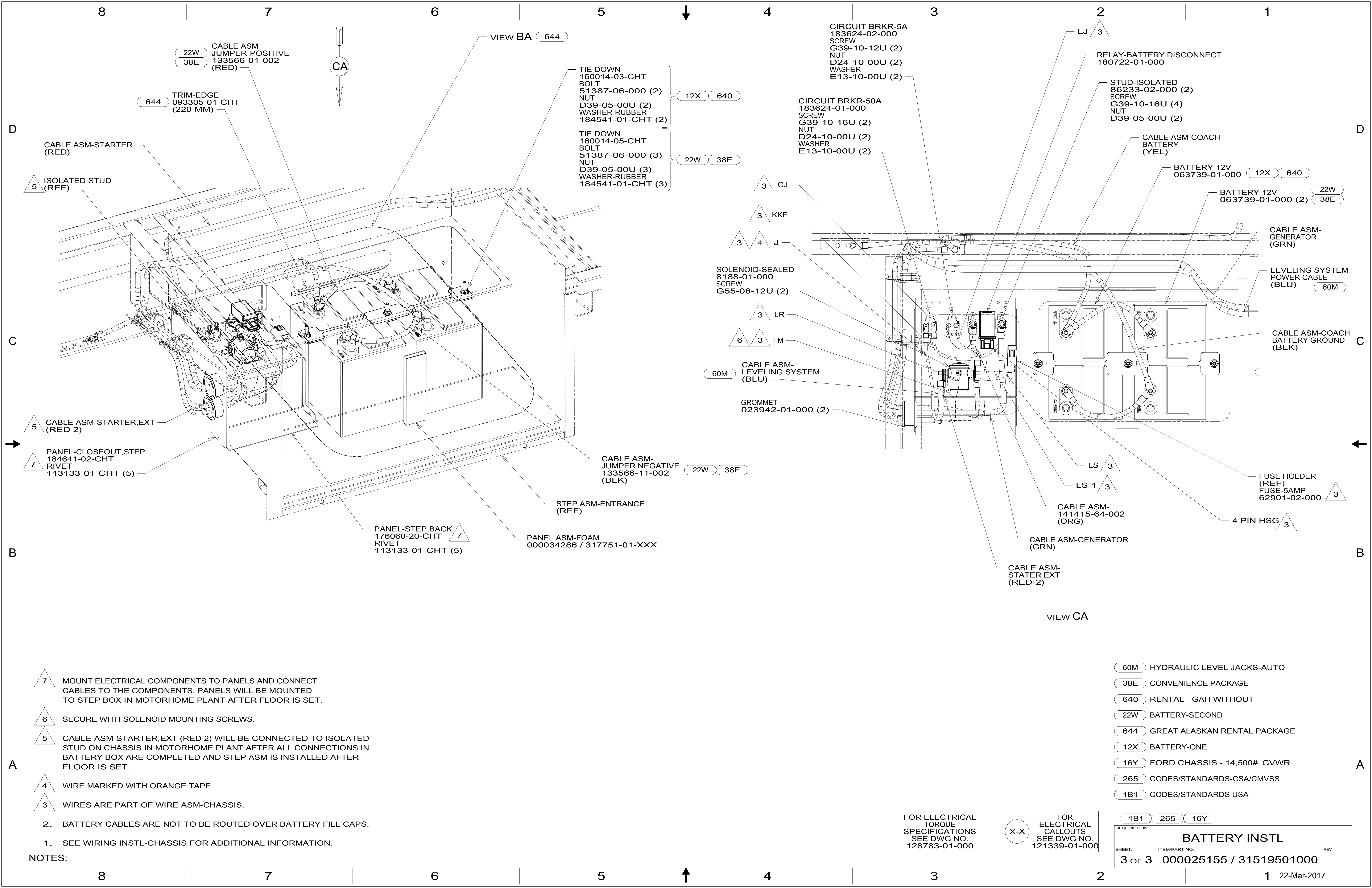
4

3

2

1

22-Mar-2017



22W 38E CABLE ASM JUMPER-POSITIVE 133566-01-002 (RED)

644 TRIM-EDGE 093305-01-CHT (220 MM)

VIEW BA 644

TIE DOWN 160014-03-CHT BOLT 51387-06-000 (2) NUT D39-05-00U (2) WASHER-RUBBER 184541-01-CHT (2)

TIE DOWN 160014-05-CHT BOLT 51387-06-000 (3) NUT D39-05-00U (3) WASHER-RUBBER 184541-01-CHT (3)

CIRCUIT BRKR-5A 183624-02-000 SCREW G39-10-12U (2) NUT D24-10-00U (2) WASHER E13-10-00U (2)

CIRCUIT BRKR-50A 183624-01-000 SCREW G39-10-16U (2) NUT D24-10-00U (2) WASHER E13-10-00U (2)

RELAY-BATTERY DISCONNECT 180722-01-000

STUD-ISOLATED 86233-02-000 (2) SCREW G39-10-16U (4) NUT D39-05-00U (2)

CABLE ASM-COACH BATTERY (YEL)

BATTERY-12V 063739-01-000 12X 640

BATTERY-12V 063739-01-000 (2) 22W 38E

CABLE ASM-GENERATOR (GRN)

LEVELING SYSTEM POWER CABLE (BLU) 60M

CABLE ASM-COACH BATTERY GROUND (BLK)

SOLENOID-SEALED 8188-01-000 SCREW G55-08-12U (2)

LR 3

FM 6 3

CABLE ASM-LEVELING SYSTEM (BLU) 60M

GROMMET 023942-01-000 (2)

FUSE HOLDER (REF) FUSE-5AMP 62901-02-000 3

4 PIN HSG 3

LS 3

LS-1 3

CABLE ASM-141415-64-002 (ORG)

CABLE ASM-GENERATOR (GRN)

CABLE ASM-STATER EXT (RED-2)

VIEW CA

CABLE ASM-STARTER (RED)

ISOLATED STUD (REF) 5

CABLE ASM-STARTER,EXT (RED 2) 5

PANEL-CLOSEOUT,STEP 184641-02-CHT RIVET 113133-01-CHT (5) 7

PANEL-STEP,BACK 176060-20-CHT RIVET 113133-01-CHT (5) 7

STEP ASM-ENTRANCE (REF)

PANEL ASM-FOAM 000034286 / 317751-01-XXX

CABLE ASM-JUMPER NEGATIVE 133566-11-002 (BLK) 22W 38E

7 MOUNT ELECTRICAL COMPONENTS TO PANELS AND CONNECT CABLES TO THE COMPONENTS. PANELS WILL BE MOUNTED TO STEP BOX IN MOTORHOME PLANT AFTER FLOOR IS SET.

6 SECURE WITH SOLENOID MOUNTING SCREWS.

5 CABLE ASM-STARTER,EXT (RED 2) WILL BE CONNECTED TO ISOLATED STUD ON CHASSIS IN MOTORHOME PLANT AFTER ALL CONNECTIONS IN BATTERY BOX ARE COMPLETED AND STEP ASM IS INSTALLED AFTER FLOOR IS SET.

4 WIRE MARKED WITH ORANGE TAPE.

3 WIRES ARE PART OF WIRE ASM-CHASSIS.

2. BATTERY CABLES ARE NOT TO BE ROUTED OVER BATTERY FILL CAPS.

1. SEE WIRING INSTL-CHASSIS FOR ADDITIONAL INFORMATION.

NOTES:

FOR ELECTRICAL TORQUE SPECIFICATIONS SEE DWG NO. 128783-01-000

FOR ELECTRICAL CALLOUTS SEE DWG NO. 121339-01-000

- 60M HYDRAULIC LEVEL JACKS-AUTO
- 38E CONVENIENCE PACKAGE
- 640 RENTAL - GAH WITHOUT
- 22W BATTERY-SECOND
- 644 GREAT ALASKAN RENTAL PACKAGE
- 12X BATTERY-ONE
- 16Y FORD CHASSIS - 14,500#\_GVWR
- 265 CODES/STANDARDS-CSA/CMVSS
- 1B1 CODES/STANDARDS USA

DESCRIPTION: 1B1 265 16Y		
<b>BATTERY INSTL</b>		
SHEET: 3 OF 3	ITEM/PART NO: 000025155 / 31519501000	REV:
22-Mar-2017		