

8 7 6 5 4 3 2 1

D

D

C

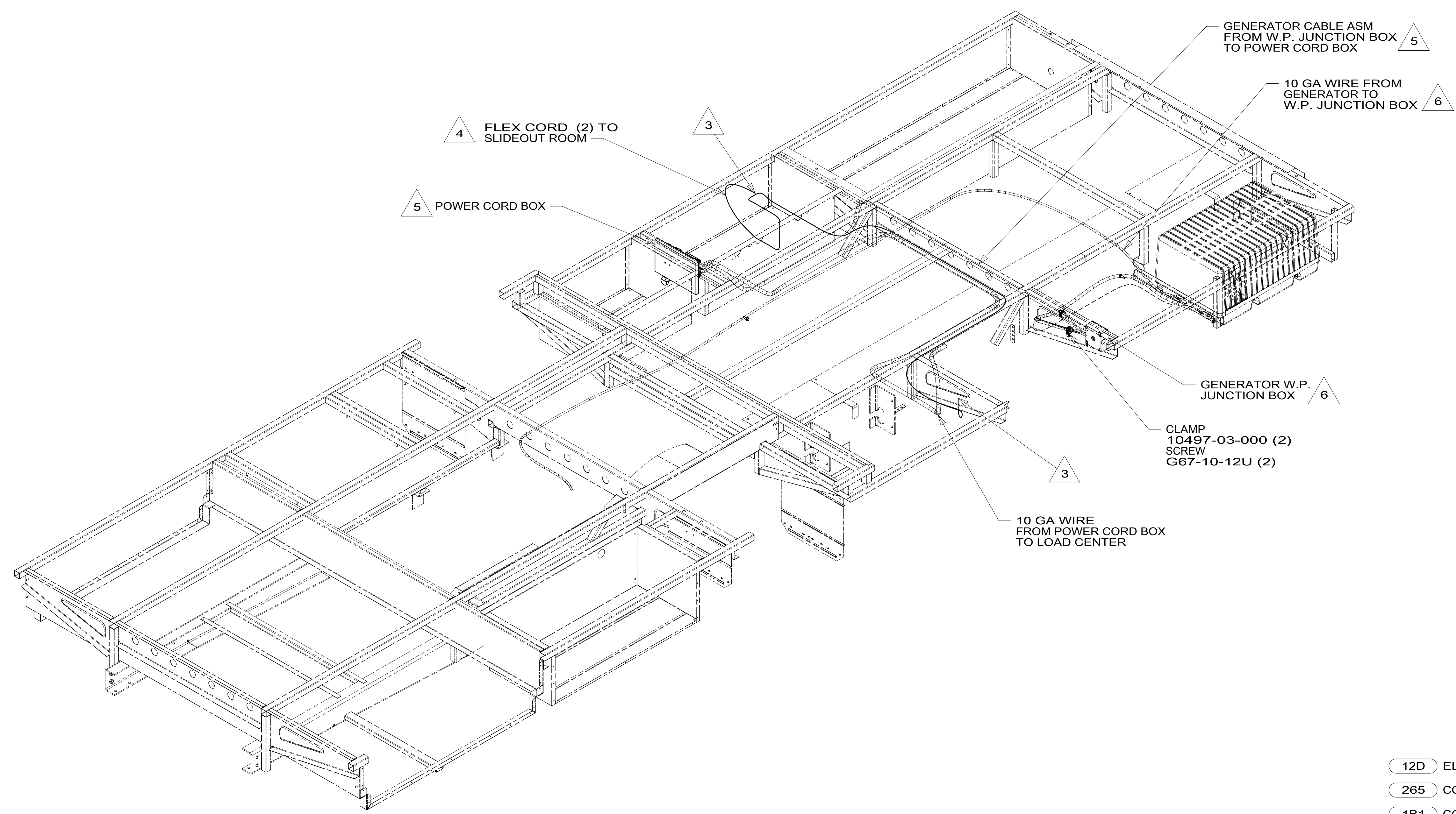
C

B

B

A

A



- △ 6 SEE GENERATOR INSTL FOR ADDITIONAL INFORMATION.
 - △ 5 SEE LOAD CENTER/ATS ASM FOR ADDITIONAL INFORMATION.
 - △ 4 CORD IS PART OF WIRE ASM-CHASSIS.
 - △ 3 ROUTE WIRE THRU FLOOR.
2. ALL 110V WIRE TO BE CLAMPED WITH CLAMP 10497-05-000 WITHIN 200MM OF OUTLET BOXES, USE SCREW G67-10-12B.
 1. AT MINIMUM ALL WIRES TO BE SUPPORTED AND SECURED PER CODE REQUIREMENTS. USE CLAMP 10495 OR 10497 OR WIRE TIE 8343 OR 108046 AND SCREW G67-XX-XXX OR G56-XX-XXX AS APPROPRIATE FOR INSTALLATION.

NOTES:

- 12D ELECTRICAL SYSTEM 30 AMP
- 265 CODES/STANDARDS-CSA/CMVSS
- 1B1 CODES/STANDARDS USA

1B1 265



DSNR:		ALL DIMENSIONS ARE IN MILLIMETERS	
DFFR:		MATERIAL:	
UNSPECIFIED TOLERANCES:			
WHOLE DIM (X)	: 3		
ONE-PLACE (X.X)	: 1.5		
TWO-PLACE (X.XX)	: 0.50		
ANGLE	: 1°		
REFER TO ES0018 FOR FASTENER TIGHTENING GUIDELINES		WEIGHT: (LBS)	FIRST USED:
			17 331G

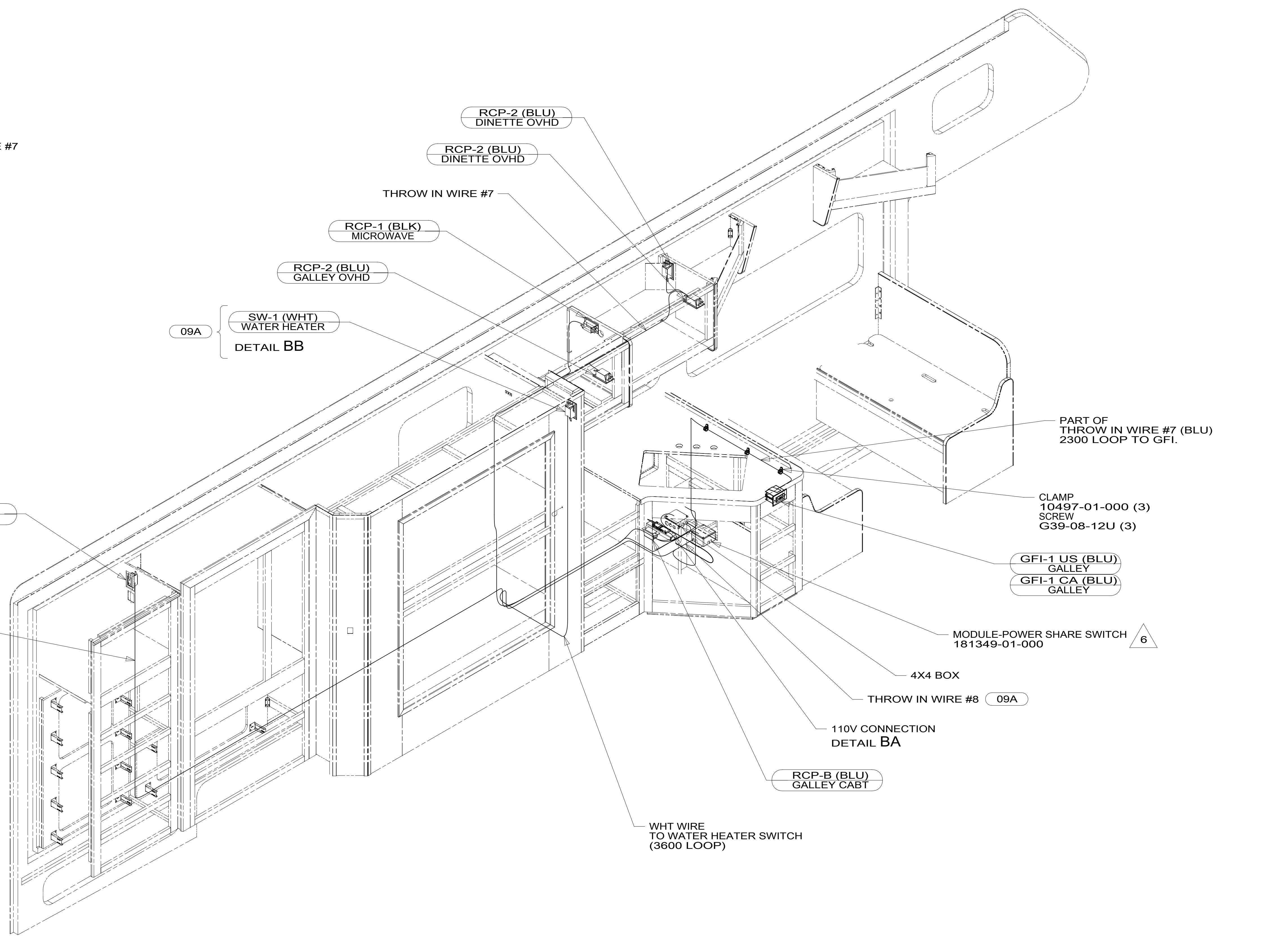
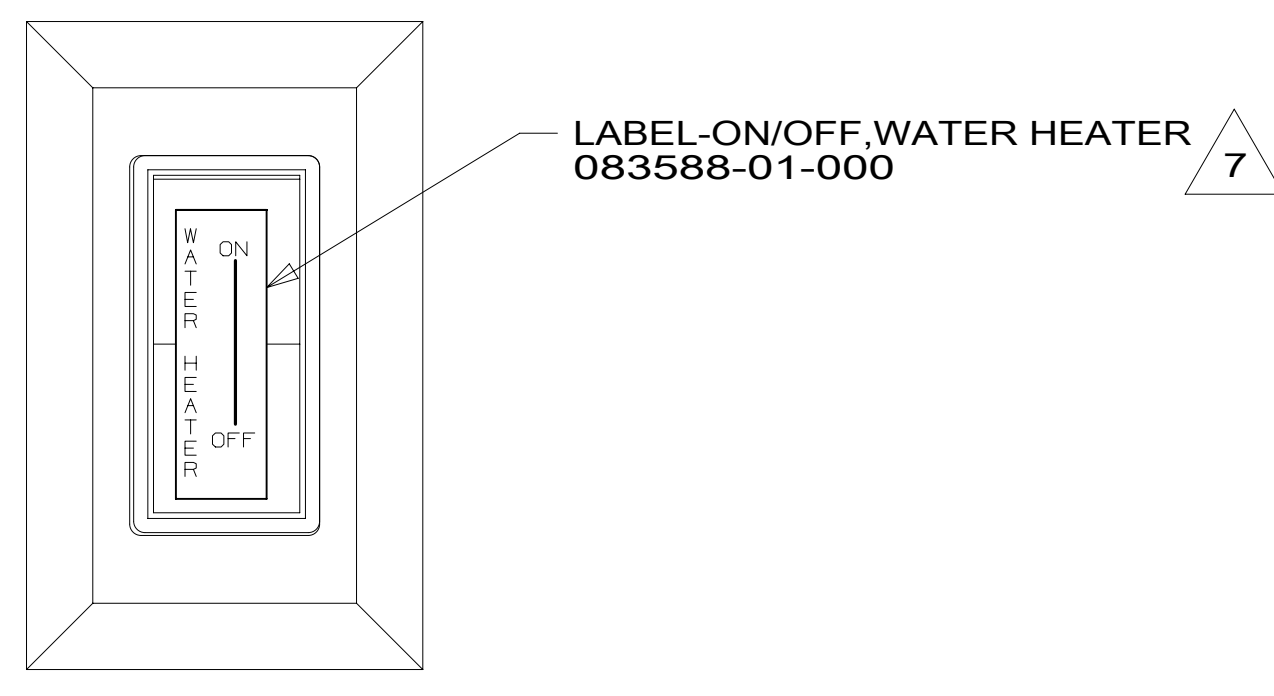
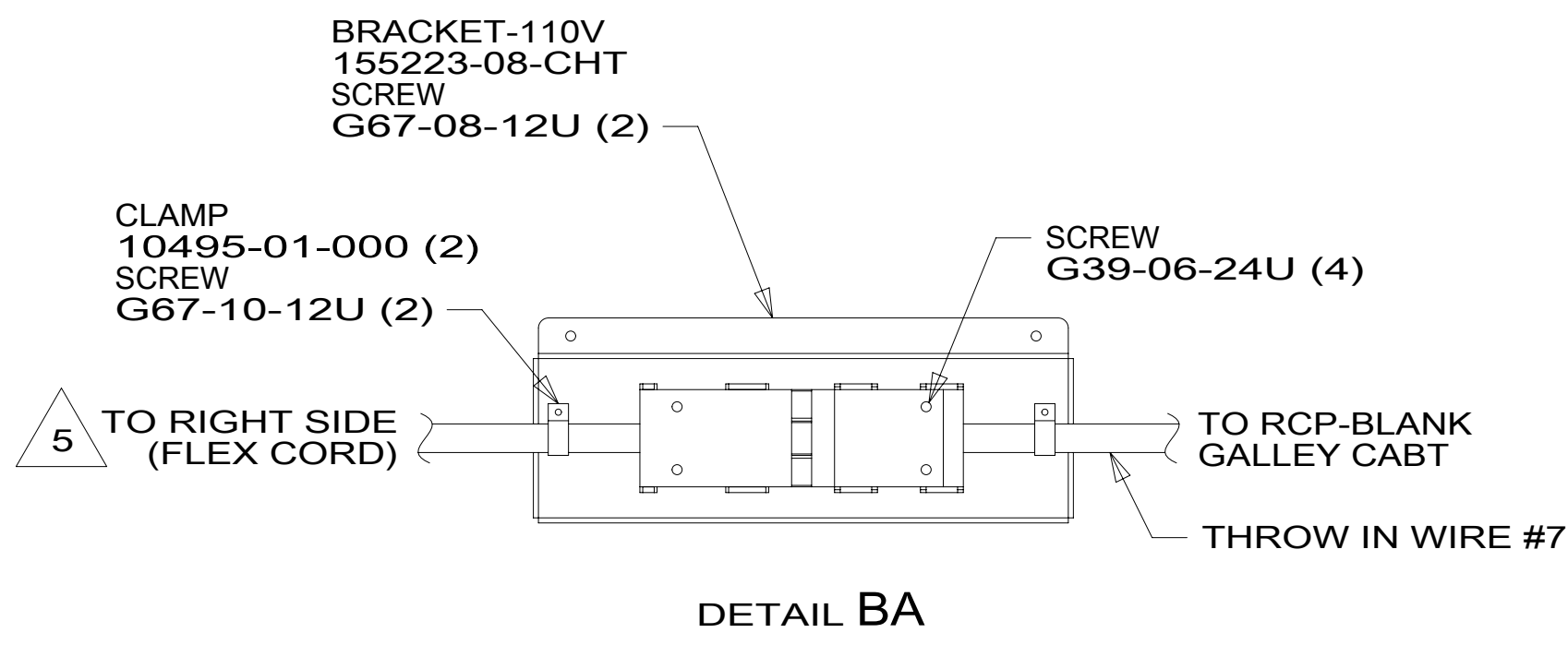
FOR ELECTRICAL TORQUE SPECIFICATIONS SEE DWG NO. 128783-01-000

FOR ELECTRICAL CALLOUTS SEE DWG NO. 121339-01-000

DESCRIPTION: WIRING INSTL-BODY, 110V		
SHEET: 1 OF 4	ITEM/PART NO.: 000025154 / 31519401000	REV:
REF:	1	17-Mar-2017

8 7 6 5 4 3 2 1

8 7 6 5 4 3 2 1



- NOTES:
- 7 APPLY LABEL DIRECTLY TO FACE OF THE SWITCH.
 - 6 SEE LOAD CENTER ATS FOR ADDITIONAL INFORMATION.
 - 5 CORD & CONNECTORS ARE PART OF WIRE ASM-CHASSIS.
 - 4. FOR MORE INFORMATION SEE WIRING DIAGRAM-BODY, 110V.
 - 3. ALL GROUND WIRE TO BE COVERED WITH TUBING 8041-02-000.
 - 2. ALL 110V WIRE TO BE CLAMPED WITH CLAMP 10497-05-000 WITHIN 200MM OF OUTLET BOXES, USE SCREW G67-10-12B.
 - 1. AT MINIMUM ALL WIRES TO BE SUPPORTED AND SECURED PER CODE REQUIREMENTS. USE CLAMP 10495 OR 10497 OR WIRE TIE 8343 OR 108046 AND SCREW G67-XX-XXX OR G56-XX-XXX AS APPROPRIATE FOR INSTALLATION.

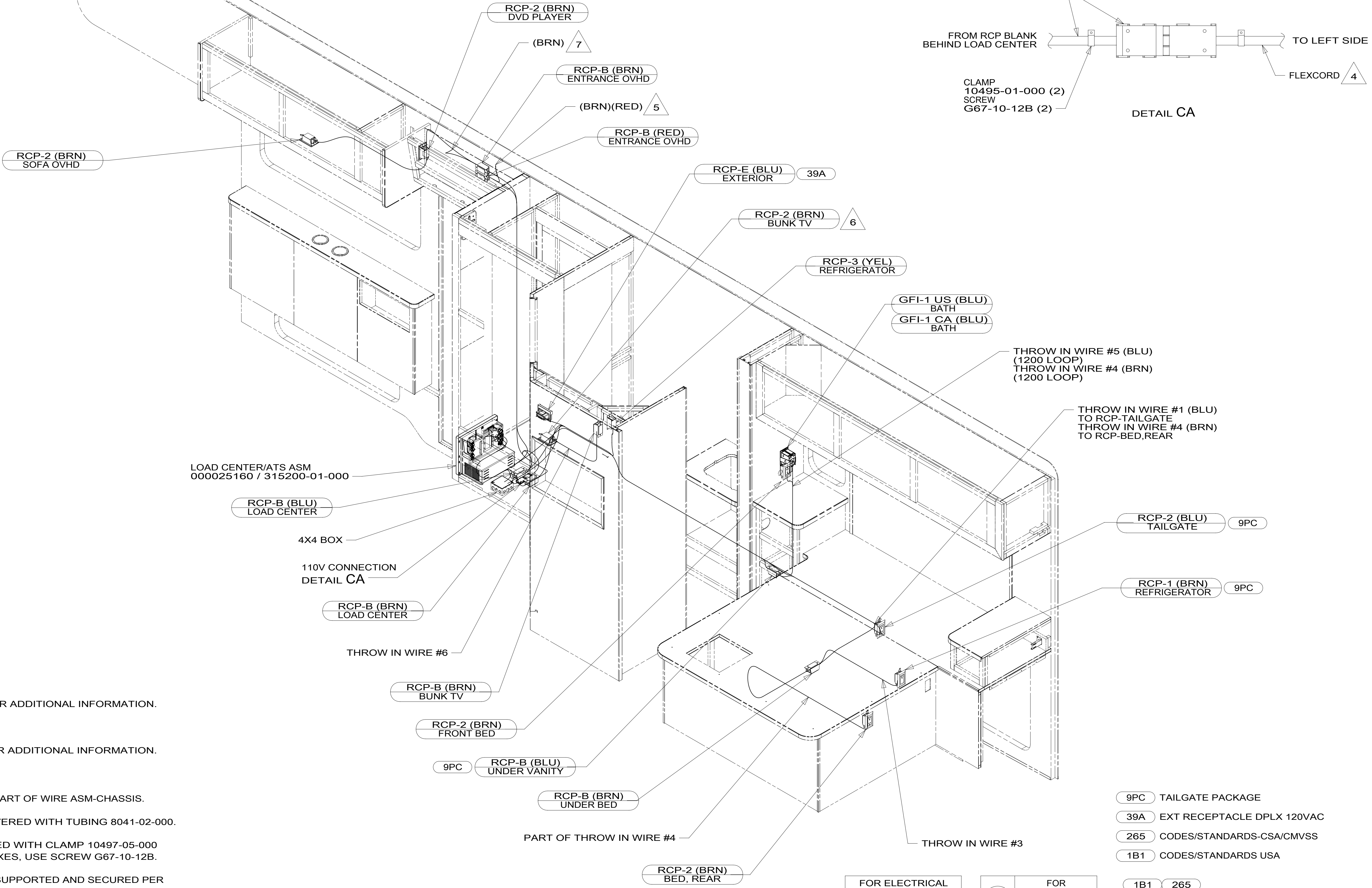
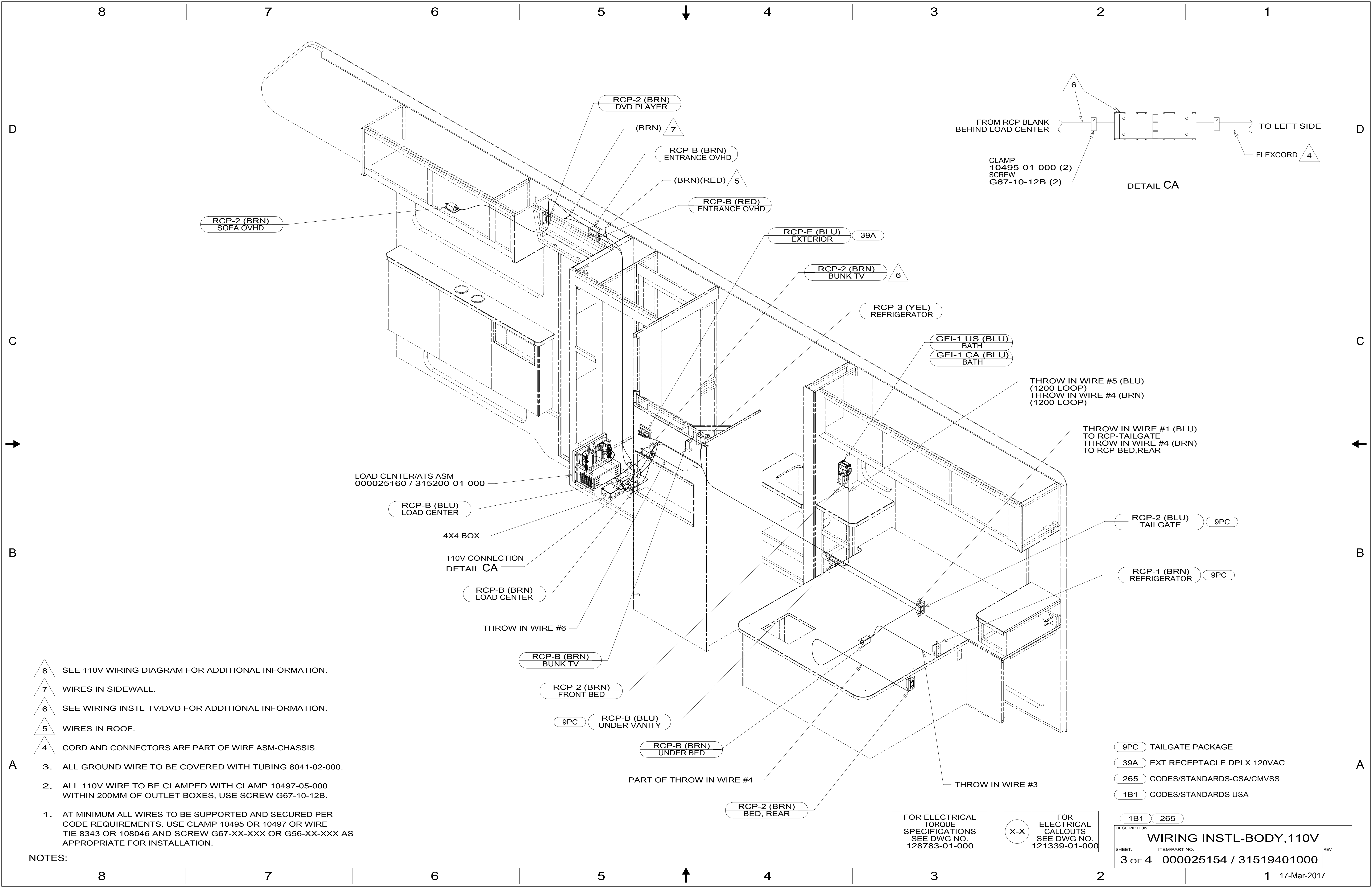
- 09A PREMIUM PACKAGE
- 265 CODES/STANDARDS-CSA/CMVSS
- 1B1 CODES/STANDARDS USA

FOR ELECTRICAL TORQUE SPECIFICATIONS SEE DWG NO. 128783-01-000

X-X FOR ELECTRICAL CALLOUTS SEE DWG NO. 121339-01-000

DESCRIPTION: WIRING INSTL-BODY, 110V		
SHEET: 2 OF 4	ITEM/PART NO.: 000025154 / 31519401000	REV:

8 7 6 5 4 3 2 1 17-Mar-2017



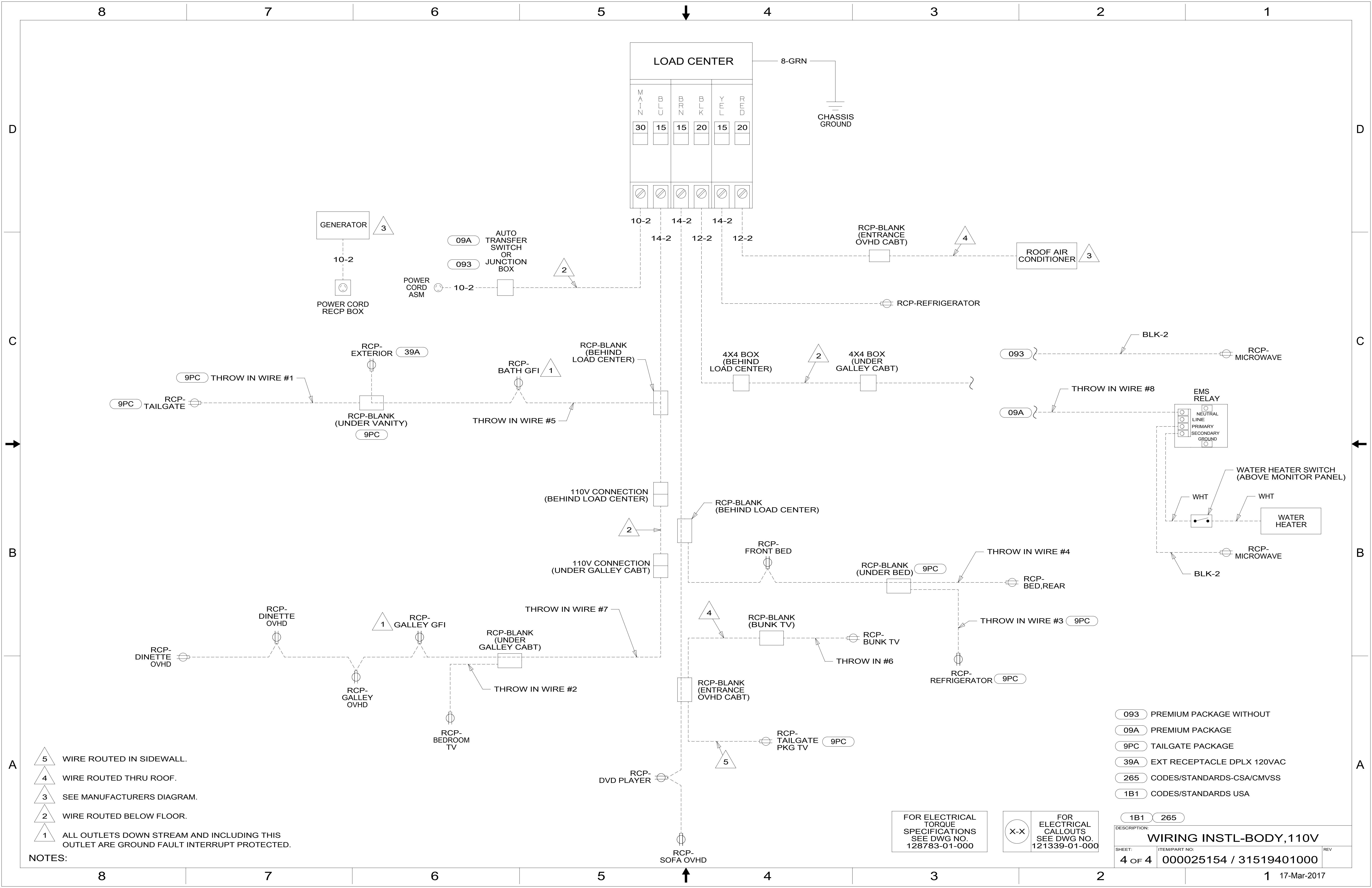
- 8 SEE 110V WIRING DIAGRAM FOR ADDITIONAL INFORMATION.
- 7 WIRES IN SIDEWALL.
- 6 SEE WIRING INSTL-TV/DVD FOR ADDITIONAL INFORMATION.
- 5 WIRES IN ROOF.
- 4 CORD AND CONNECTORS ARE PART OF WIRE ASM-CHASSIS.
3. ALL GROUND WIRE TO BE COVERED WITH TUBING 8041-02-000.
2. ALL 110V WIRE TO BE CLAMPED WITH CLAMP 10497-05-000 WITHIN 200MM OF OUTLET BOXES, USE SCREW G67-10-12B.
1. AT MINIMUM ALL WIRES TO BE SUPPORTED AND SECURED PER CODE REQUIREMENTS. USE CLAMP 10495 OR 10497 OR WIRE TIE 8343 OR 108046 AND SCREW G67-XX-XXX OR G56-XX-XXX AS APPROPRIATE FOR INSTALLATION.

- 9PC TAILGATE PACKAGE
- 39A EXT RECEPTACLE DPLX 120VAC
- 265 CODES/STANDARDS-CSA/CMVSS
- 1B1 CODES/STANDARDS USA

FOR ELECTRICAL TORQUE SPECIFICATIONS SEE DWG NO. 128783-01-000

FOR ELECTRICAL CALLOUTS SEE DWG NO. 121339-01-000

DESCRIPTION:	1B1 265	
WIRING INSTL-BODY, 110V		
SHEET:	ITEM/PART NO:	REV
3 OF 4	000025154 / 31519401000	



- NOTES:
- 5 WIRE ROUTED IN SIDEWALL.
 - 4 WIRE ROUTED THRU ROOF.
 - 3 SEE MANUFACTURERS DIAGRAM.
 - 2 WIRE ROUTED BELOW FLOOR.
 - 1 ALL OUTLETS DOWN STREAM AND INCLUDING THIS OUTLET ARE GROUND FAULT INTERRUPT PROTECTED.

- 093 PREMIUM PACKAGE WITHOUT
- 09A PREMIUM PACKAGE
- 9PC TAILGATE PACKAGE
- 39A EXT RECEPTACLE DPLX 120VAC
- 265 CODES/STANDARDS-CSA/CMVSS
- 1B1 CODES/STANDARDS USA

FOR ELECTRICAL TORQUE SPECIFICATIONS SEE DWG NO. 128783-01-000

FOR ELECTRICAL CALLOUTS SEE DWG NO. 121339-01-000

DESCRIPTION:	
WIRING INSTL-BODY, 110V	
SHEET:	ITEM/PART NO.:
4 OF 4	000025154 / 31519401000
REV 17-Mar-2017	