

- 09A PREMIUM PACKAGE
- 9PC TAILGATE PACKAGE
- 60M HYDRAULIC LEVEL JACKS-AUTO
- 644 GREAT ALASKAN RENTAL PACKAGE
- 283 MIRRORS-UPGRADE W/CAMERA
- 16Y FORD CHASSIS - 14,500#_GVWR
- 265 CODES/STANDARDS-CSA/CMVSS
- 1B1 CODES/STANDARDS USA

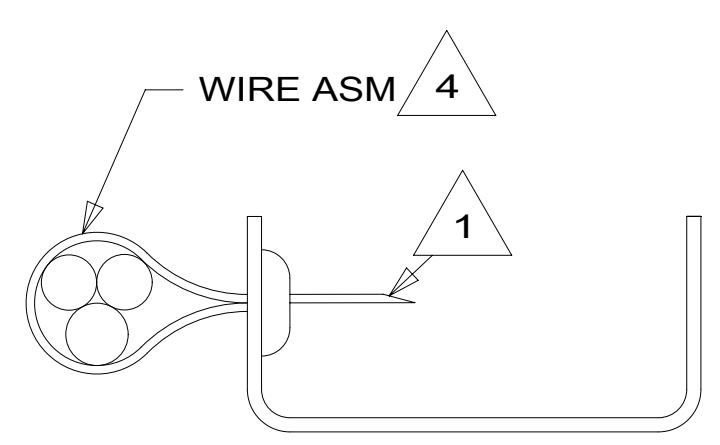
WINNEBAGO [®]		COPYRIGHT 2016 WINNEBAGO INDUSTRIES, INC.	
DSNR:		ALL DIMENSIONS ARE IN MILLIMETERS	
DFT:		▶	
UNSPECIFIED TOLERANCES:		MATERIAL:	
WHOLE DIM (X)	± 3		
ONE-PLACE (X.X)	± 1.5		
TWO-PLACE (X.XX)	± 0.50		
ANGLE	± 1°		
REFER TO ES0018 FOR FASTENER TIGHTENING GUIDELINES	WEIGHT: (LBS)	FIRST USED:	
		17 331G	
DESCRIPTION:			
WIRING INSTL-CHASSIS			
SHEET:	ITEM/PART NO:	REV	
1 OF 3	000025150 / 31519201000		
REF:		1 17-Mar-2017	

- NOTES:
- 6 FUSE LOCATED UNDER DASH BY STEERING COLUMN.
 - 5 SEE RADIO/MONITOR INSTL FOR ADDITIONAL INFORMATION.
 - 4 CUT WIRE AND RECONNECT AS SHOWN.
 - 3. USE WIRE TIES 8343-04-000 AND 116673-02-000 APPROXIMATELY 600MM ON CENTER UNLESS OTHERWISE SPECIFIED.
 - 2. SECURE CONDUIT 41953, TAB AS REQUIRED, OVER ALL WIRES IN CONTACT WITH SHARP EDGES.
 - 1 CUT LIGHT GREEN/RED WIRE FROM PARK BRAKE SWITCH AND RECONNECT TO CIRCUIT DY OF CHASSIS ASM AS SHOWN.

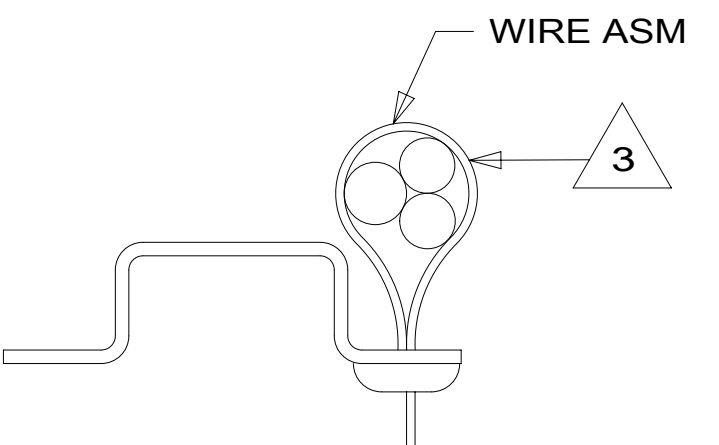
- 11 FUSE LOCATED UNDER DASH BY PARK BRAKE ASM.
- 10 SEE LOAD CENTER/ATS ASM FOR ADDITIONAL INFORMATION.
- 9 HDMI CABLE TO BE ROUTED WITH WIRE ASM-CHASSIS TO FRONT OF CHASSIS.
- 8 ROUTE WIRE ASM WITH CHASSIS WIRE ASM PASSING THROUGH FLOOR ON BOTH LEFT AND RIGHT SIDES.
- 7 SEE BATTERY INSTALLATION FOR ADDITIONAL INFORMATION.

FOR ELECTRICAL TORQUE SPECIFICATIONS SEE DWG NO. 128783-01-000

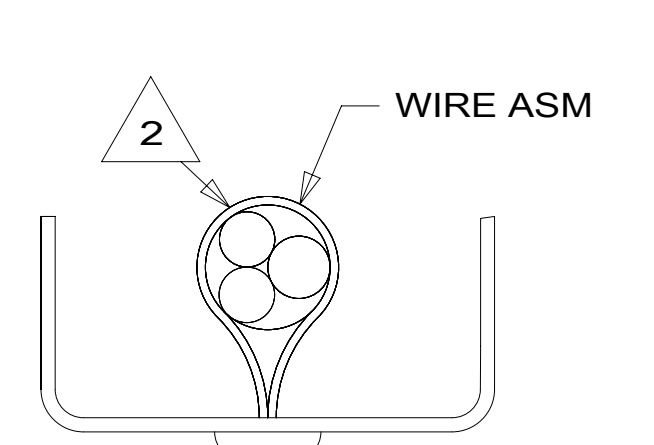
FOR ELECTRICAL CALLOUTS SEE DWG NO. 121339-01-000



SECTION BA-BA
(OPPOSITE FOR
RIGHT SIDE)

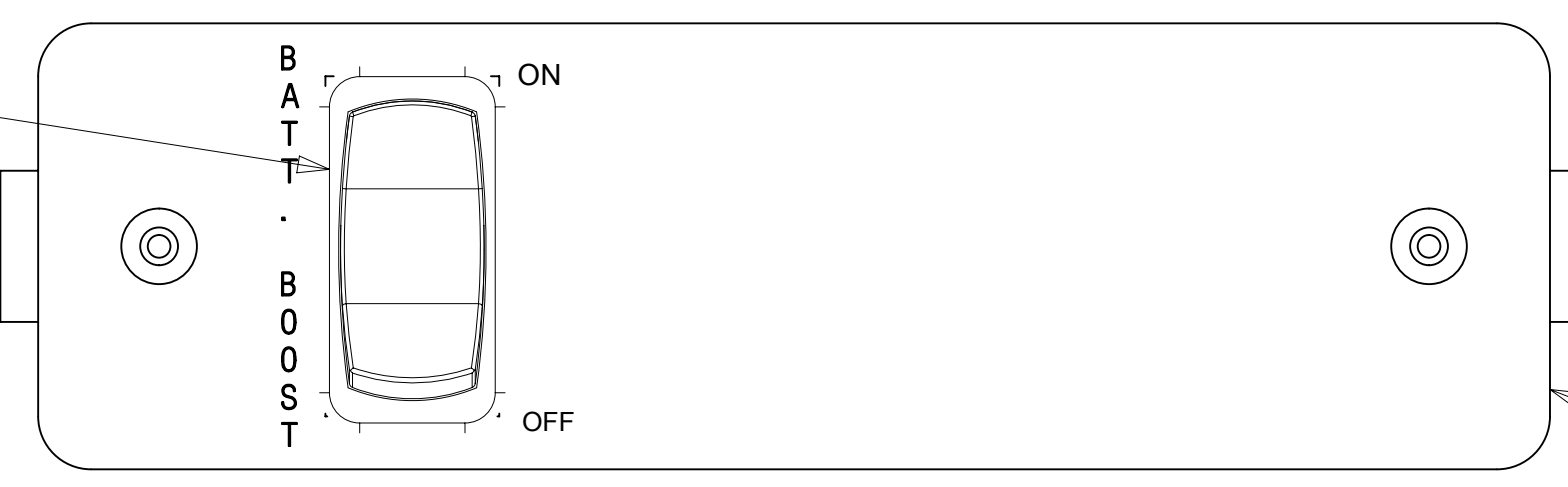


SECTION BB-BB



SECTION BC-BC

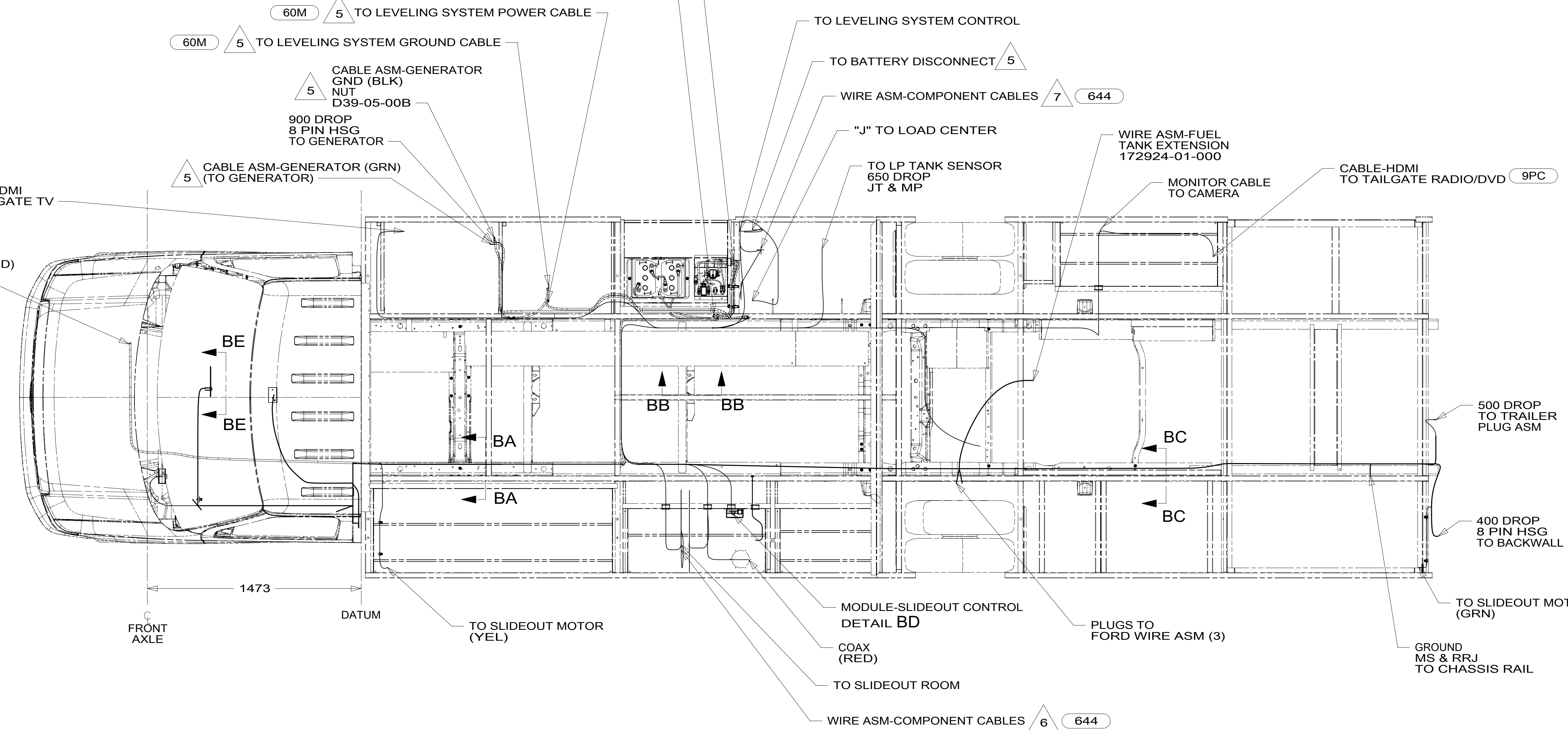
SWITCH-ROCKER
145638-04-CHT
(CIRCUITS
LS-1,LR,KE)



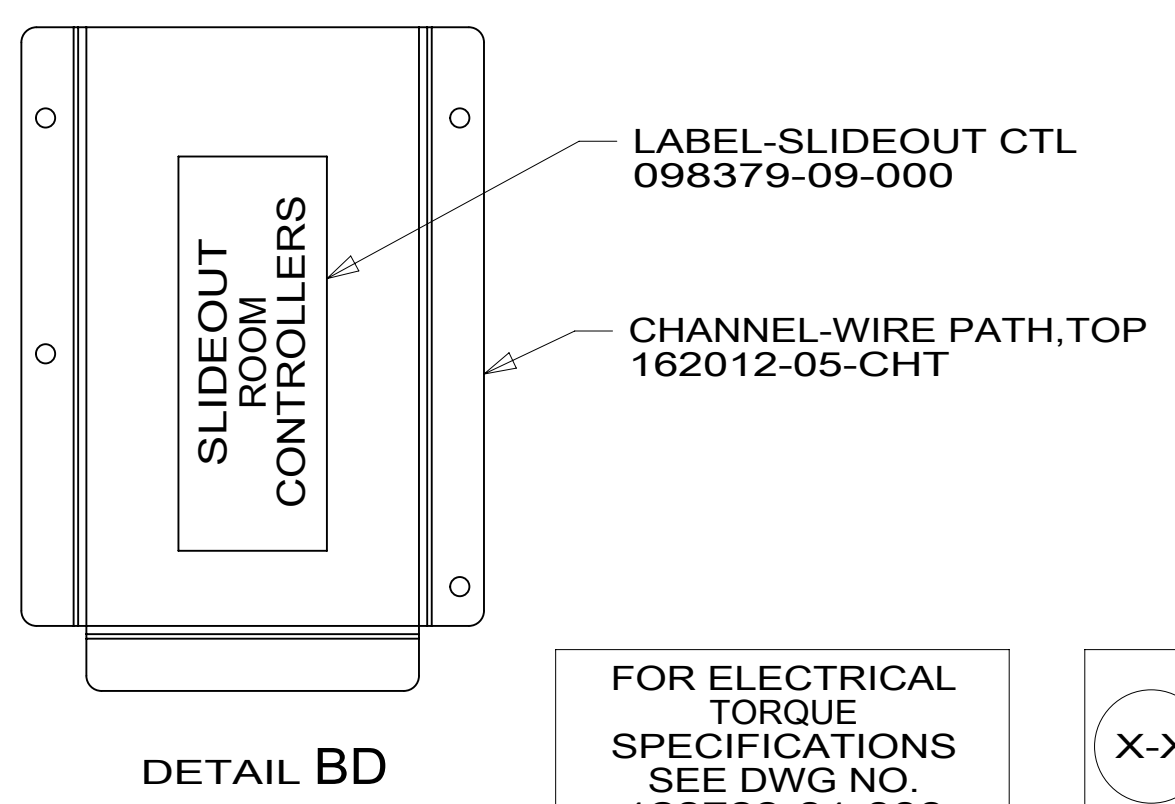
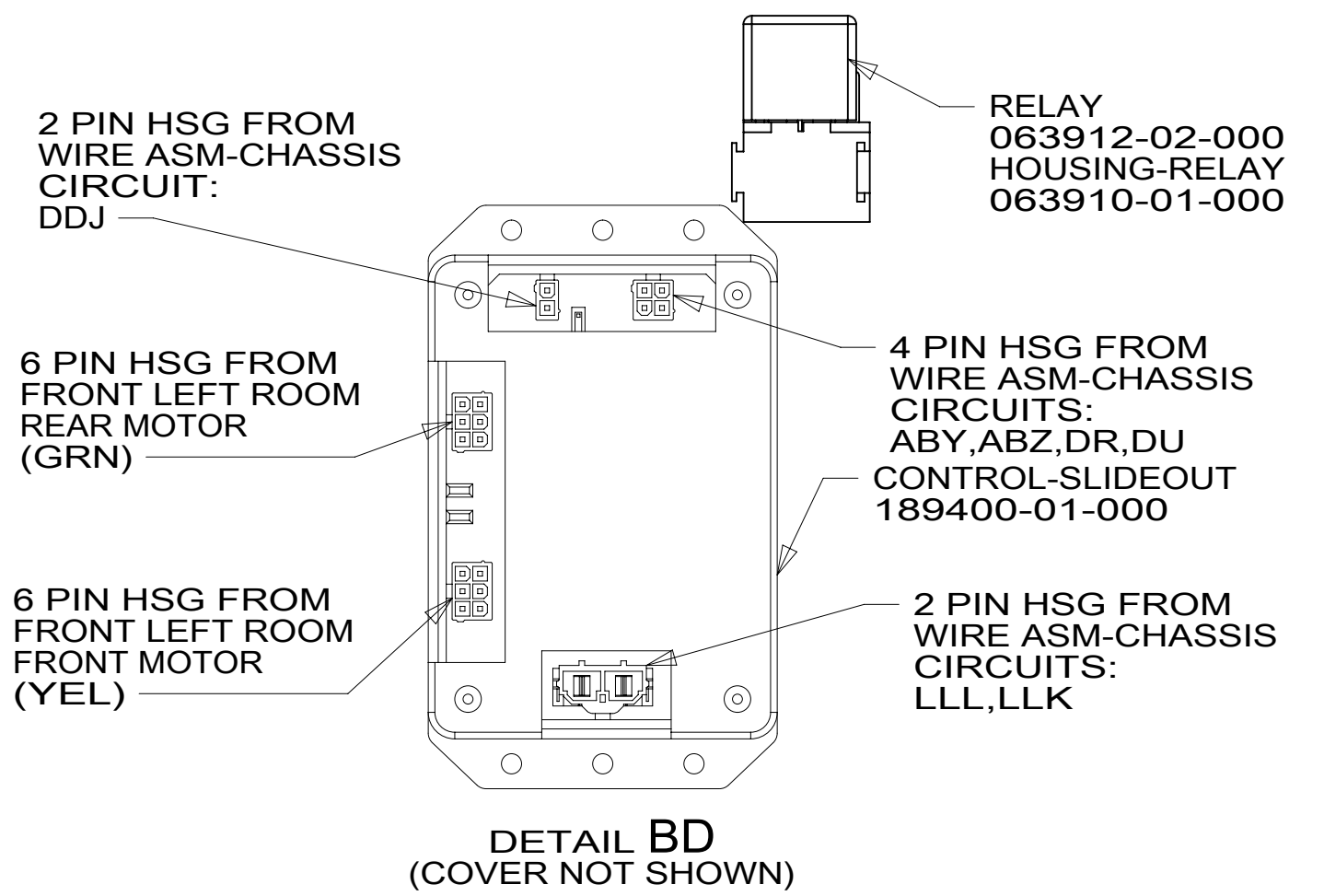
VIEW BE-BE

PLATE-SWITCH,MOUNTING
152419-03-CHT
PLATE-SWITCH
144363-16-CHT
SCREW
G11-06-08U (2)

APPLIQUE-SWITCH,
BOOST/RADIO
132954-15-CHT



- NOTES:
- 7 WIRE ASM-COMPONENT CABLE PASSES THROUGH FLOOR WITH WIRE ASM-CHASSIS.
 - 6 WIRE ASM-COMPONENT CABLE PASSES THROUGH GATOR TRAC WITH WIRE ASM-CHASSIS.
 - 5 SEE BATTERY INSTL FOR ADDITIONAL INFORMATION.
 - 4 WIRES TO BE TIED TO CROSS MEMBER USING EXISTING HOLES.
 - 3 WIRES TO BE TIED TO TOP OF RAIL USING EXISTING HOLES.
 - 2 WIRES TO BE TIED TO INSIDE OF RAIL USING EXISTING HOLES.
 - 1 CUT OFF EXCESS END OF WIRE TIE.



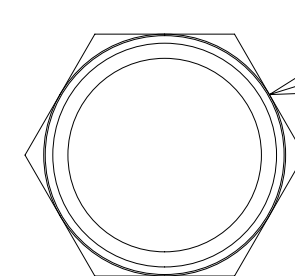
FOR ELECTRICAL
TORQUE
SPECIFICATIONS
SEE DWG NO.
128783-01-000

FOR ELECTRICAL
CALLOUTS
SEE DWG NO.
121339-01-000

- 9PC TAILGATE PACKAGE
- 644 GREAT ALASKAN RENTAL PACKAGE
- 60M TO LEVELING SYSTEM POWER CABLE
- 16Y FORD CHASSIS - 14,500#_GVWR
- 265 CODES/STANDARDS-CSA/CMVSS
- 1B1 CODES/STANDARDS USA

DESCRIPTION:	1B1 265 16Y	
WIRING INSTL-CHASSIS		
SHEET:	ITEM/PART NO:	REV
2 OF 3	000025150 / 31519201000	

8 7 6 5 4 3 2 1



LIGHT ASM-INDICATOR,RED
190682-01-000
DETAIL CC

1

JACKS DOWN

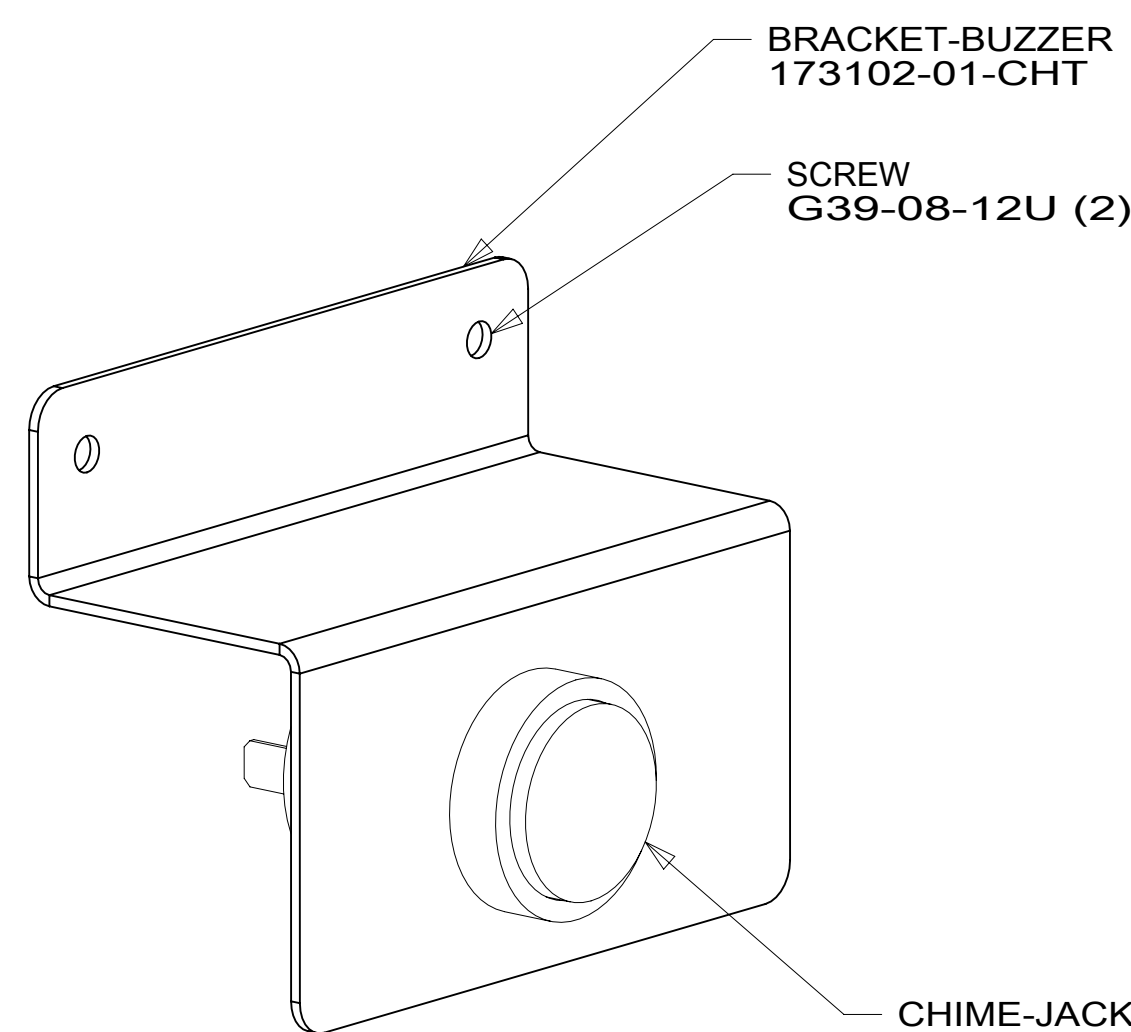
LABEL-JACKS DOWN
133533-01-CHT

DETAIL CA 60M



RIGHT SIDE OF
STEERING COLUMN

DETAIL CD 60M

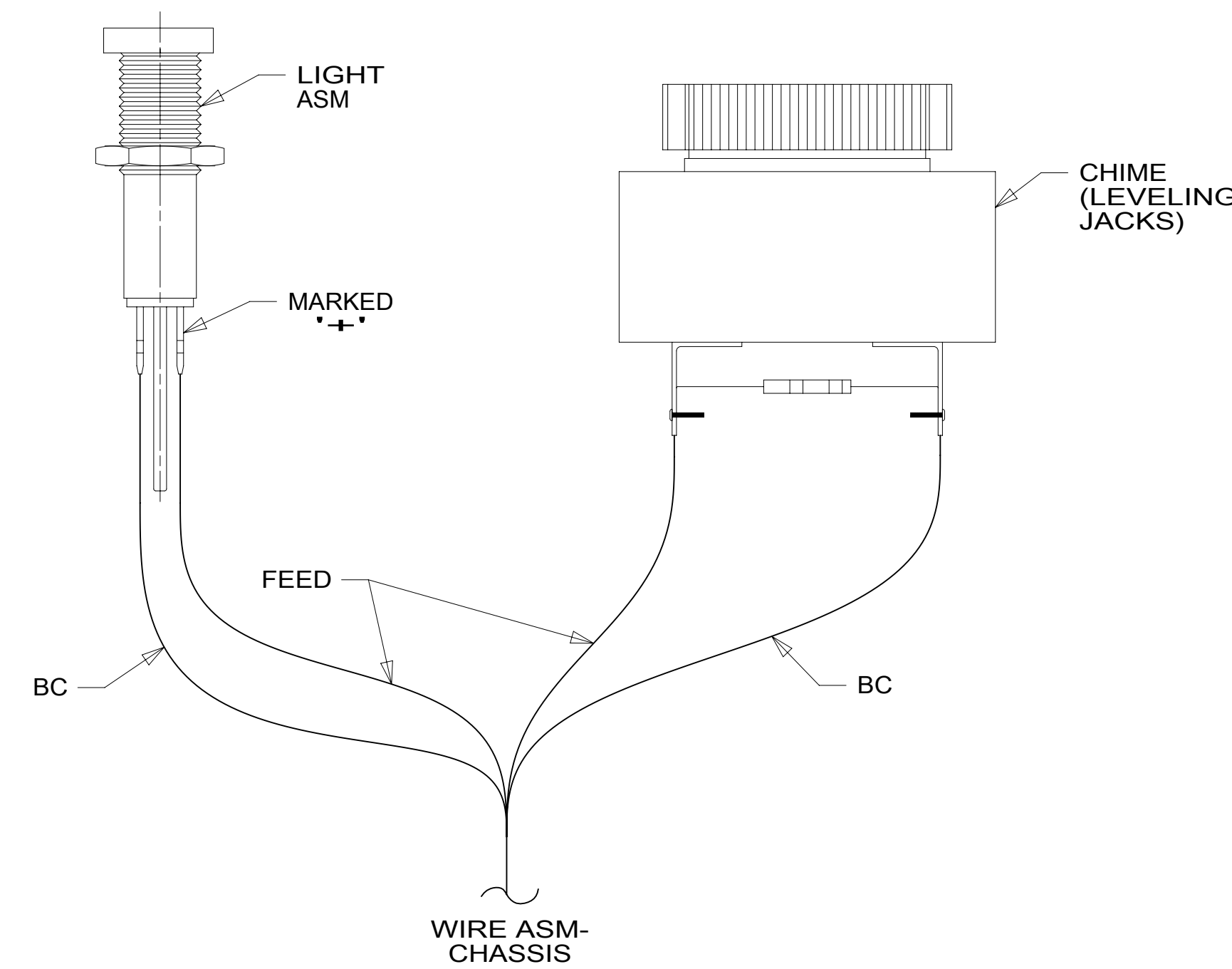


BRACKET-BUZZER
173102-01-CHT

SCREW
G39-08-12U (2)

CHIME-JACKS DOWN
160876-01-000
DETAIL CC

DETAIL CB



WIRE ASM-
CHASSIS

DETAIL CC 60M

1 FOR HOLE SIZE AND LOCATION SEE DETAIL CD.
NOTES:

FOR ELECTRICAL
TORQUE
SPECIFICATIONS
SEE DWG NO.
128783-01-000

FOR
ELECTRICAL
CALLOUTS
SEE DWG NO.
121339-01-000

- 60M HYDRAULIC LEVEL JACKS-AUTO
- 16Y FORD CHASSIS - 14,500#_GVWR
- 265 CODES/STANDARDS-CSA/CMVSS
- 1B1 CODES/STANDARDS USA

1B1 265 16Y 60M

DESCRIPTION:
WIRING INSTL-CHASSIS

SHEET: 3 OF 3 ITEM/PART NO: 000025150 / 31519201000 REV

8 7 6 5 4 3 2 1 17-Mar-2017