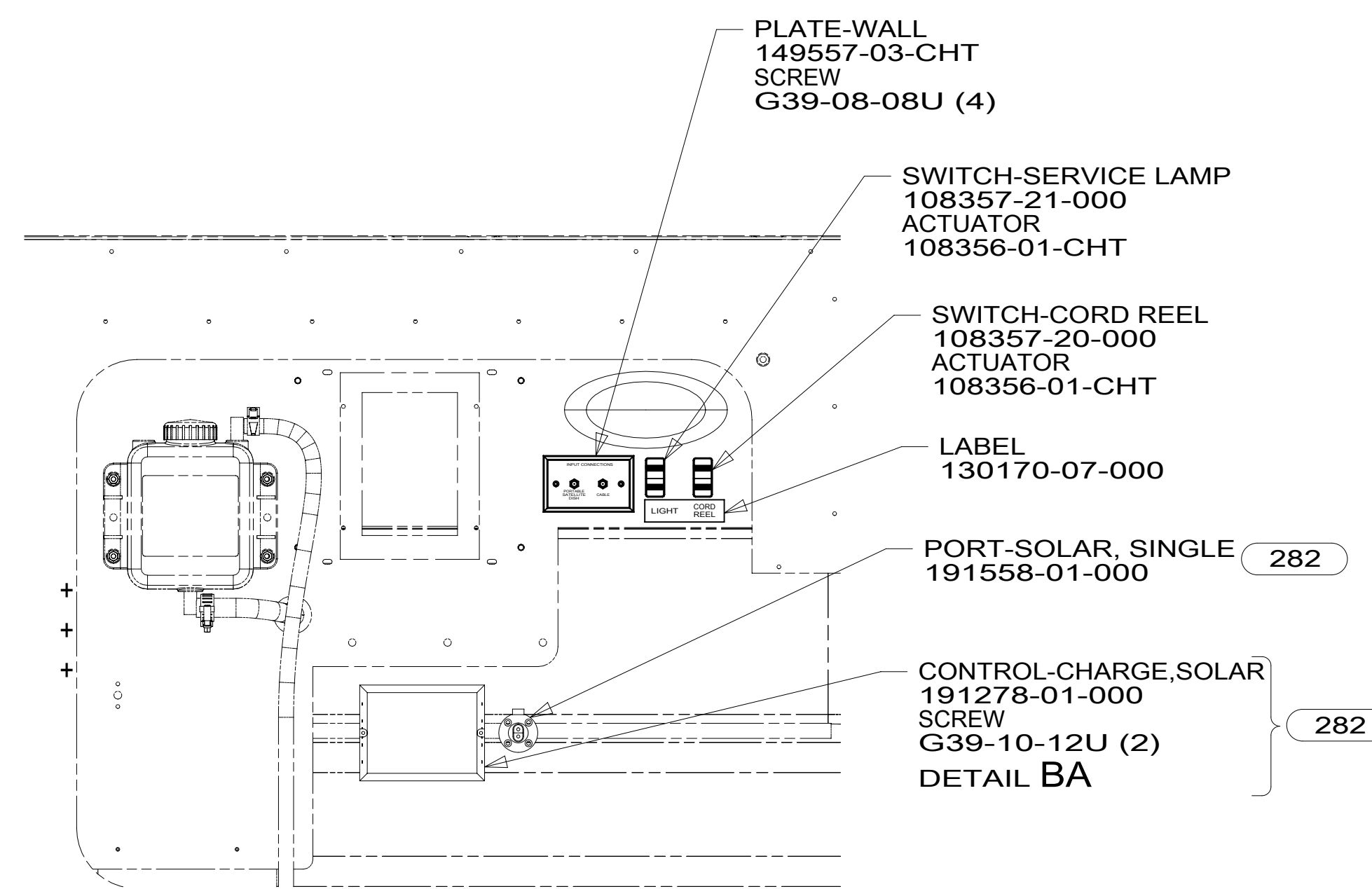
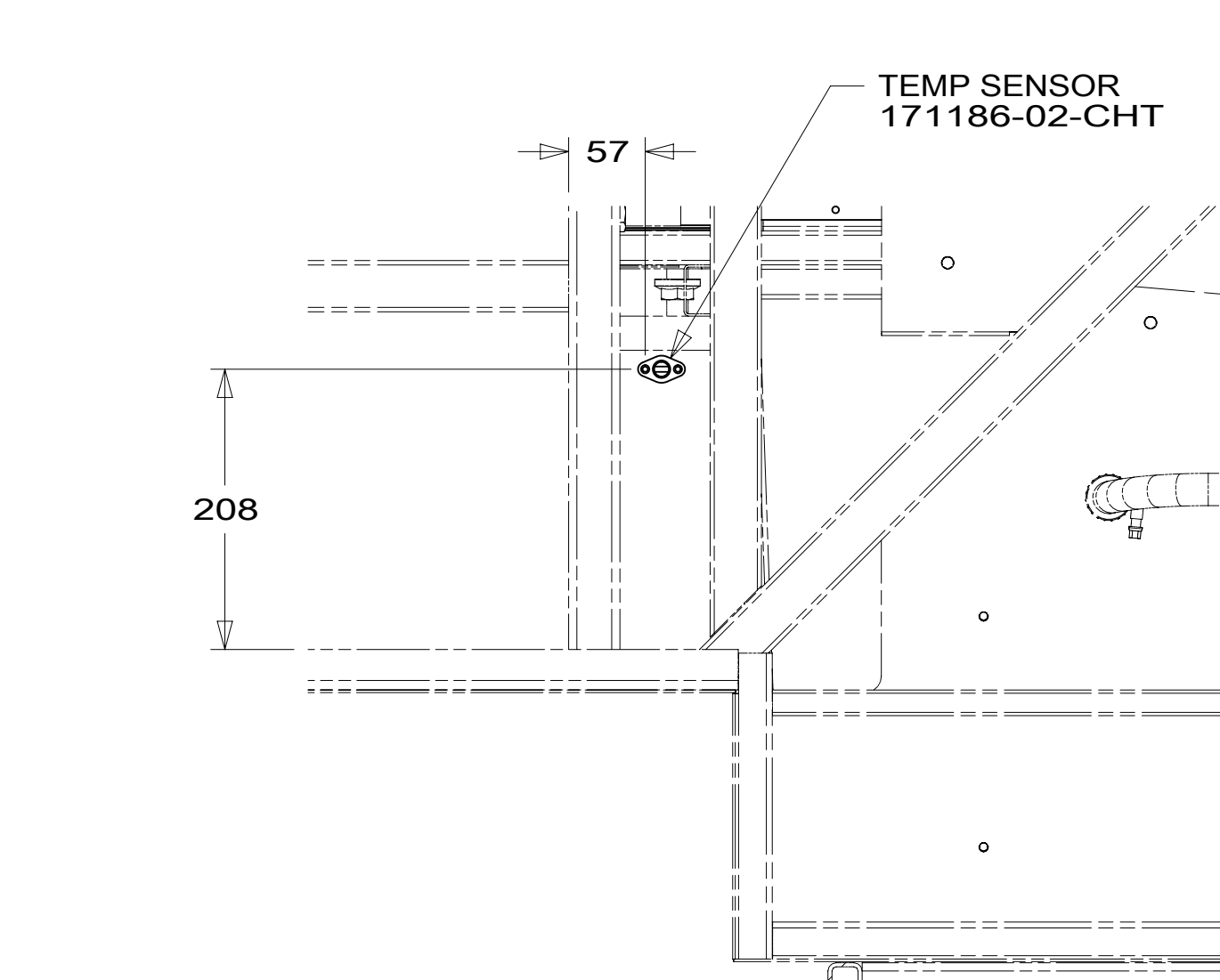


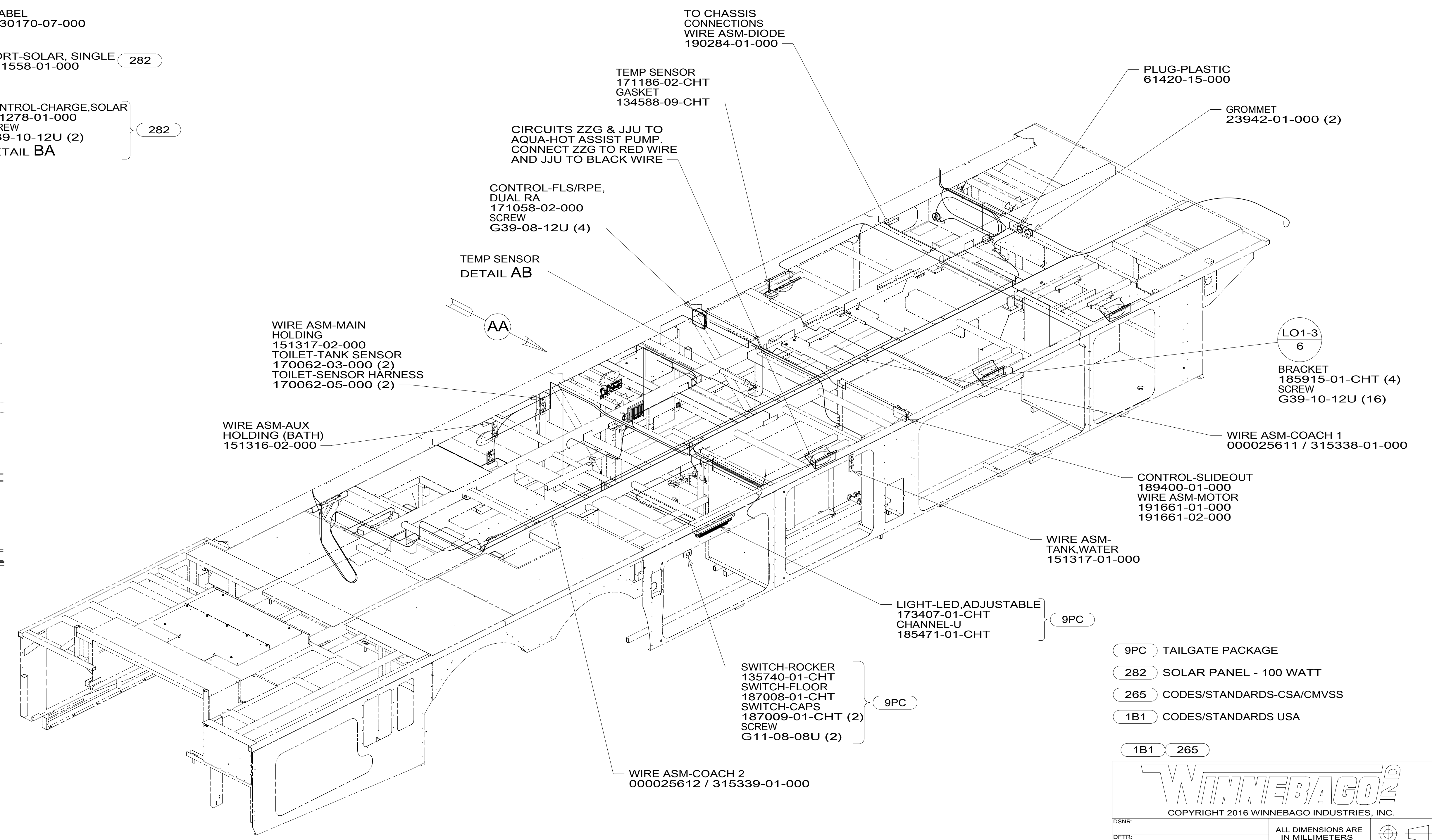
8 7 6 5 4 3 2 1



VIEW AA



VIEW AB



- NOTES:
1. AT MINIMUM ALL WIRES TO BE SUPPORTED AND SECURED PER CODE REQUIREMENTS. USE CLAMP 10495 OR 10497 OR WIRE TIE 8343 OR 108046 AND SCREW G67-XX-XXX OR G56-XX-XXX AS APPROPRIATE FOR INSTALLATION.
 2. ROUTE TANK SENSOR WIRES SO THEY DO NOT PASS OVER SENSORS. USE WIRE TIE MOUNT 155366-01-000 AND WIRE TIE 8343-01-000 AS NEEDED. TANK SURFACE MUST BE CLEANED USING ISOPROPYL ALCOHOL AND PRIMED WITH PRIMER 94.

FOR ELECTRICAL TORQUE SPECIFICATIONS SEE DWG NO. 128783-01-000

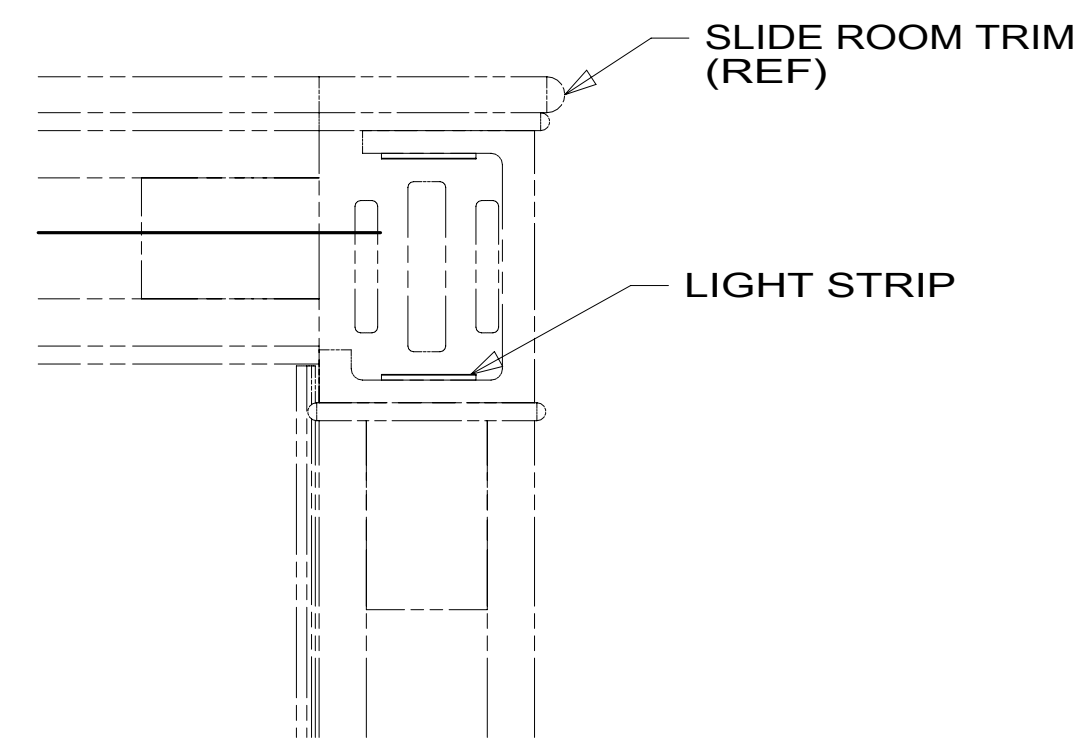
FOR ELECTRICAL CALLOUTS SEE DWG NO. 121339-01-000

- 9PC TAILGATE PACKAGE
- 282 SOLAR PANEL - 100 WATT
- 265 CODES/STANDARDS-CSA/CMVSS
- 1B1 CODES/STANDARDS USA
- 1B1 265

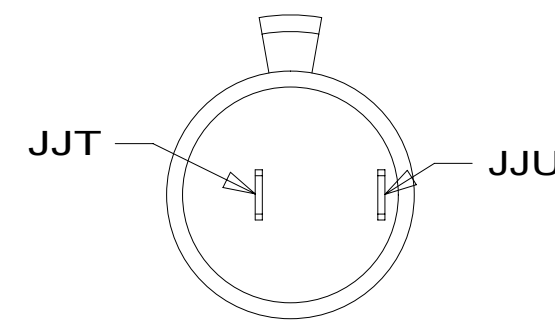


DSNR:		ALL DIMENSIONS ARE IN MILLIMETERS	
DIFFR:		MATERIAL:	
UNSPECIFIED TOLERANCES:			
WHOLE DIM (X)	± 3		
ONE-PLACE (X.X)	± 1.5		
TWO-PLACE (X.XX)	± 0.50		
ANGLE	± 1°		
REFER TO ES0018 FOR FASTENER TIGHTENING GUIDELINES		WEIGHT: (LBS)	FIRST USED:
			17 R42QD
DESCRIPTION: WIRING INSTL-BODY, 12V			
SHEET:	ITEM/PART NO:	REV	
1 OF 10	000025073 / 31518201000		
REF:		1 16-Jan-2017	

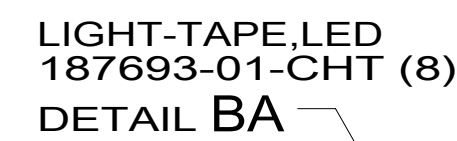
8 7 6 5 4 3 2 1



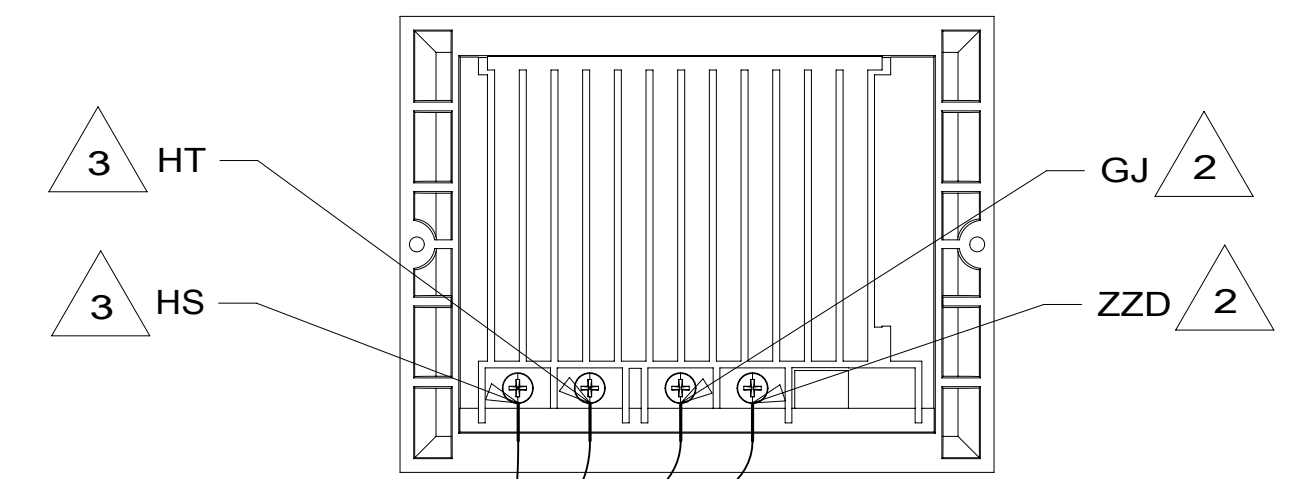
VIEW BA



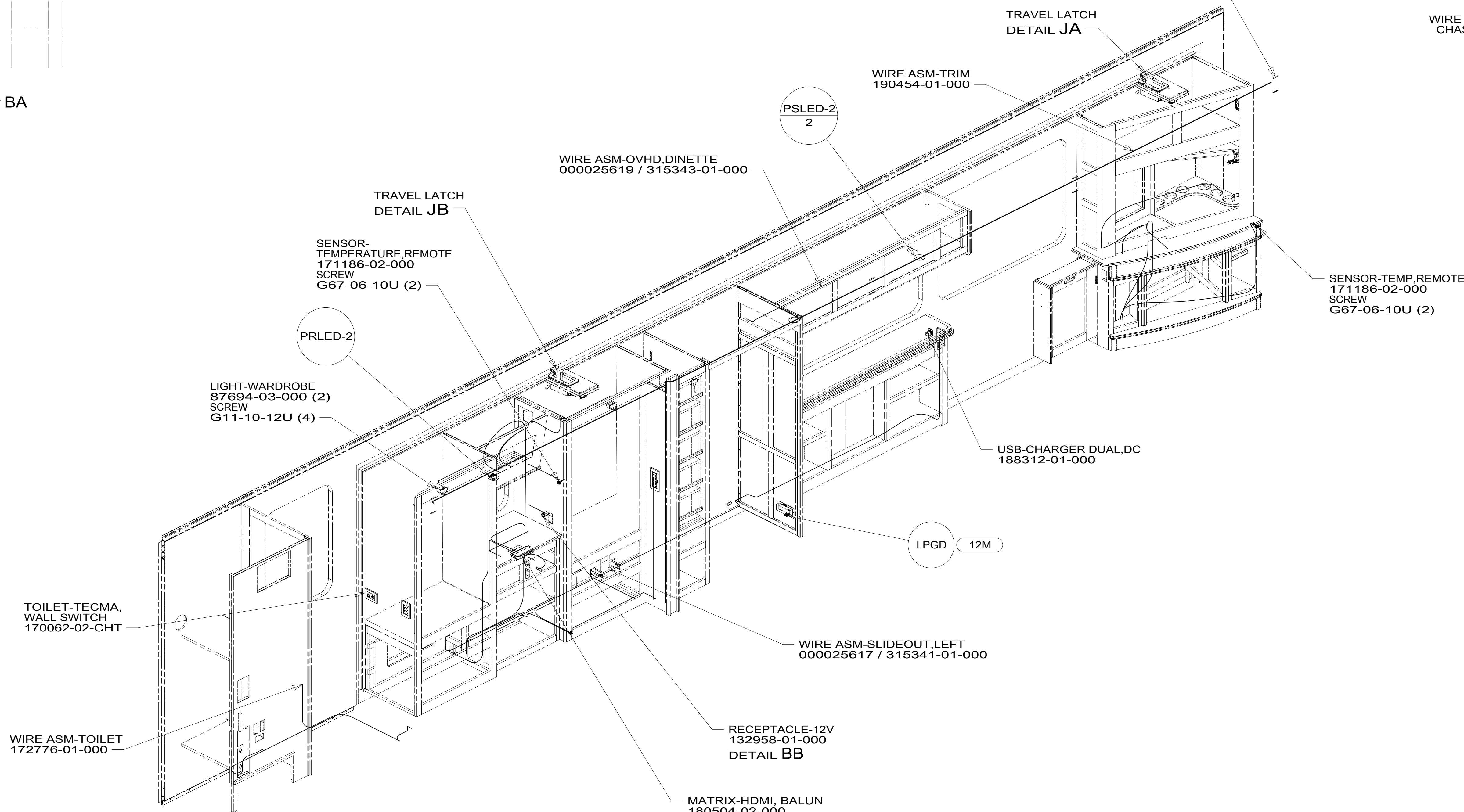
DETAIL BB



DETAIL BA



VIEW BC



PRLED-2

PSLED-2
2

LPGD 12M

- 3 MARK WITH RED TAPE.
- 2 MARK WITH WHITE TAPE.

1. AT MINIMUM ALL WIRES TO BE SUPPORTED AND SECURED PER CODE REQUIREMENTS. USE CLAMP 10495 OR 10497 OR WIRE TIE 8343 OR 108046 AND SCREW G67-XX-XXX OR G56-XX-XXX AS APPROPRIATE FOR INSTALLATION.

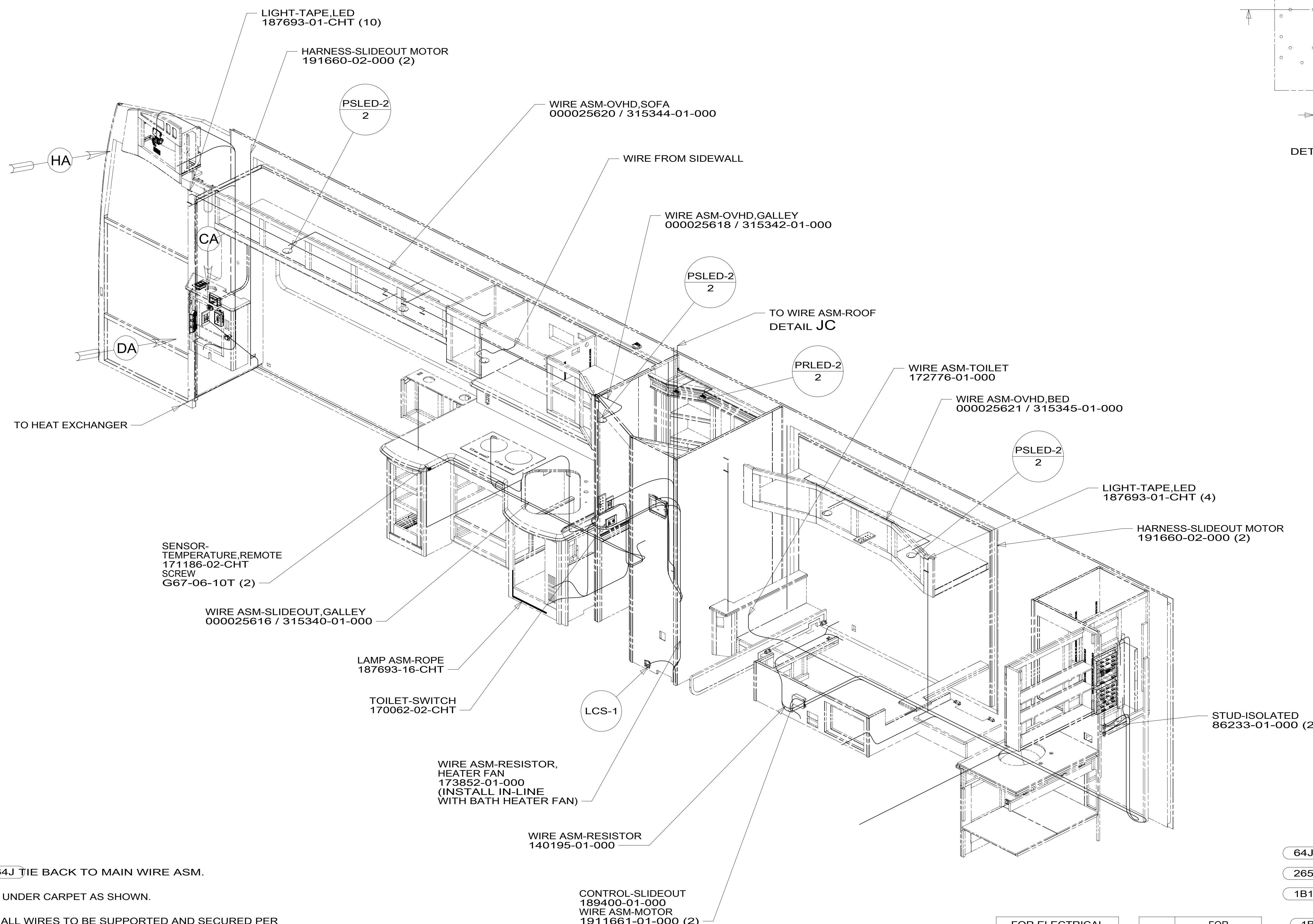
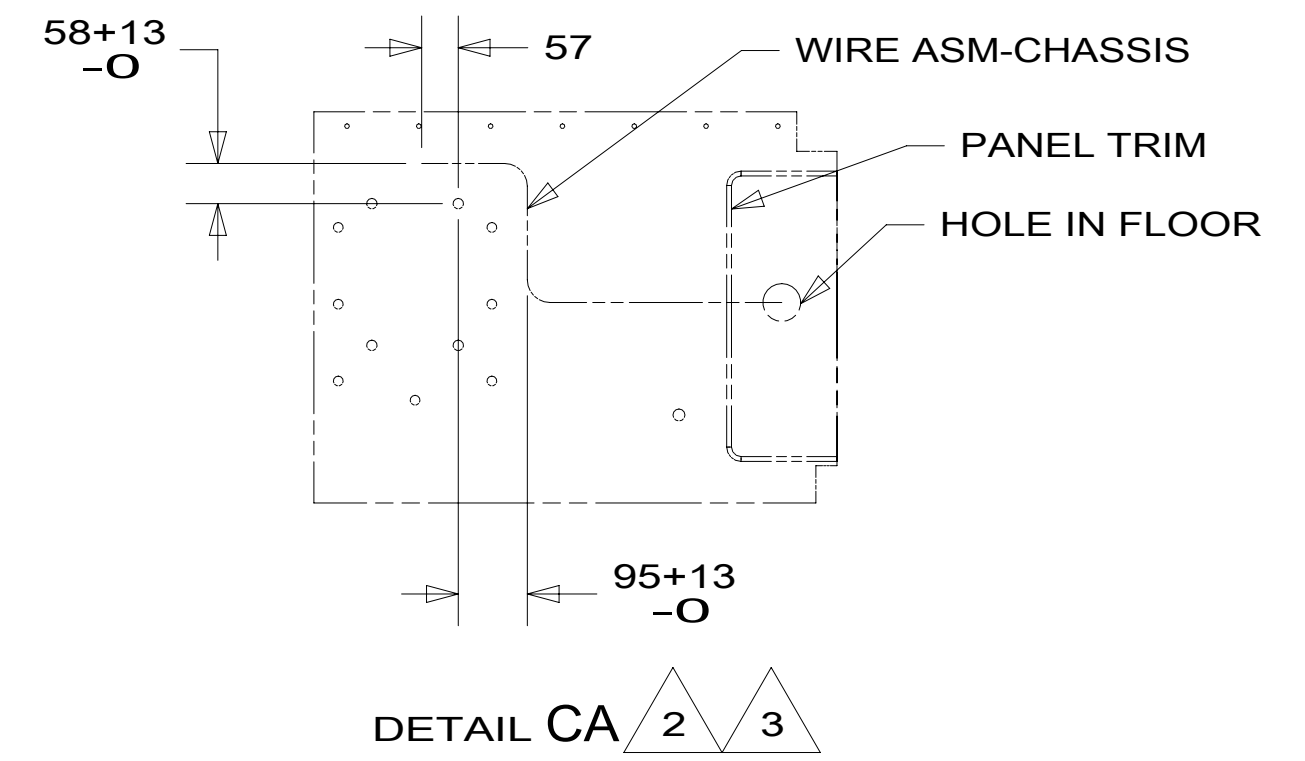
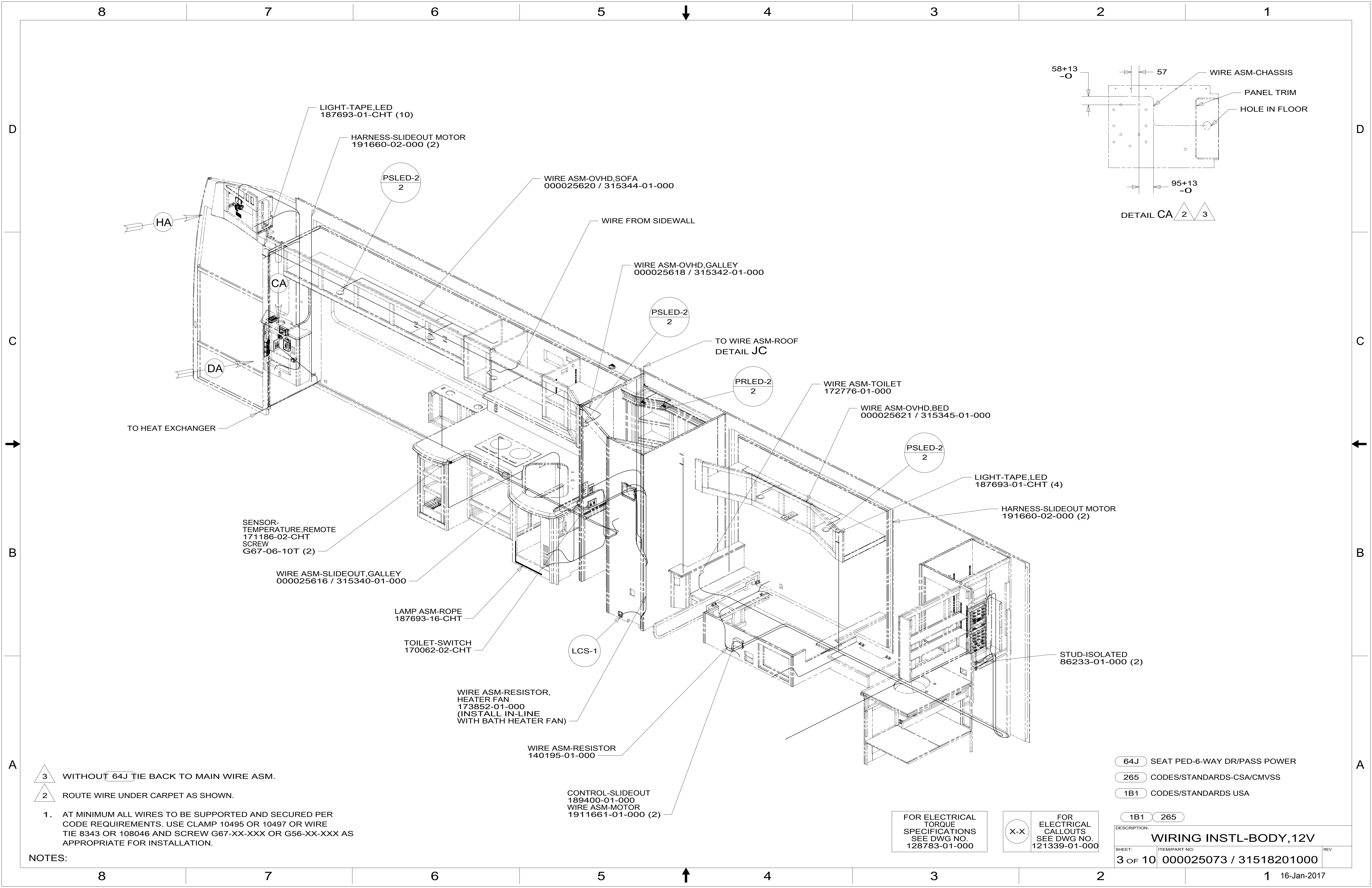
NOTES:

FOR ELECTRICAL TORQUE SPECIFICATIONS SEE DWG NO. 128783-01-000

FOR ELECTRICAL CALLOUTS SEE DWG NO. 121339-01-000

- 25N HOME THEATER SOUNDBAR SYSTEM
- 12M LPG SYSTEM
- 265 CODES/STANDARDS-CSA/CMVSS
- 1B1 CODES/STANDARDS USA

DESCRIPTION:		1B1 265	
WIRING INSTL-BODY, 12V			
SHEET:	ITEM/PART NO.:	REV:	
2 OF 10	000025073 / 31518201000		



- 3 WITHOUT 64J TIE BACK TO MAIN WIRE ASM.
- 2 ROUTE WIRE UNDER CARPET AS SHOWN.

1. AT MINIMUM ALL WIRES TO BE SUPPORTED AND SECURED PER CODE REQUIREMENTS. USE CLAMP 10495 OR 10497 OR WIRE TIE 8343 OR 108046 AND SCREW G67-XX-XXX OR G56-XX-XXX AS APPROPRIATE FOR INSTALLATION.

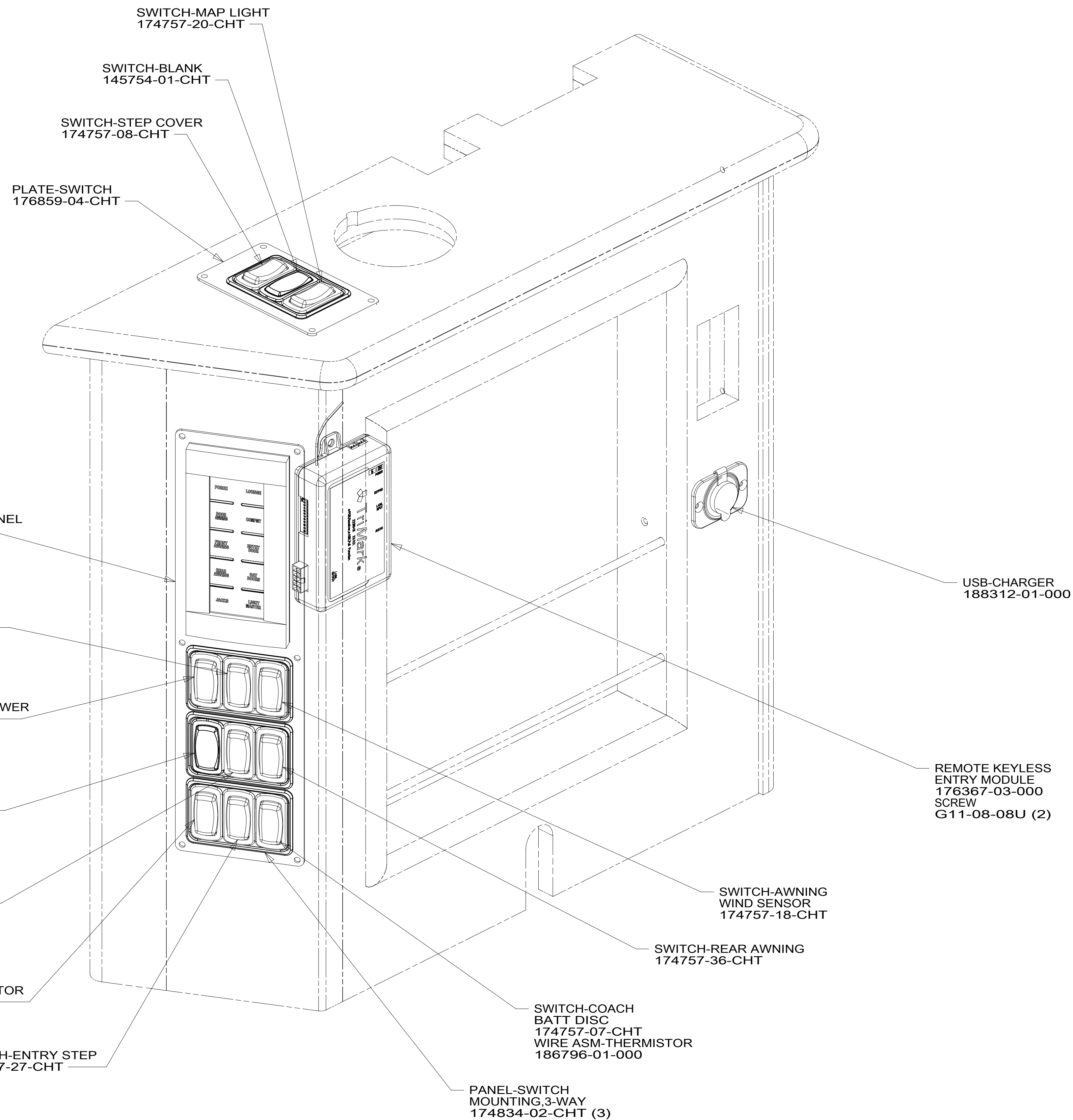
NOTES:

FOR ELECTRICAL TORQUE SPECIFICATIONS SEE DWG NO. 128783-01-000

FOR ELECTRICAL CALLOUTS SEE DWG NO. 121339-01-000

- 64J SEAT PED-6-WAY DR/PASS POWER
- 265 CODES/STANDARDS-CSA/CMVSS
- 1B1 CODES/STANDARDS USA

DESCRIPTION:		
WIRING INSTL-BODY, 12V		
SHEET:	ITEM/PART NO.:	REV:
3 OF 10	000025073 / 31518201000	



1. AT MINIMUM ALL WIRES TO BE SUPPORTED AND SECURED PER CODE REQUIREMENTS. USE CLAMP 10495 OR 10497 OR WIRE TIE 8343 OR 108046 AND SCREW G67-XX-XXX OR G56-XX-XXX AS APPROPRIATE FOR INSTALLATION.

NOTES:

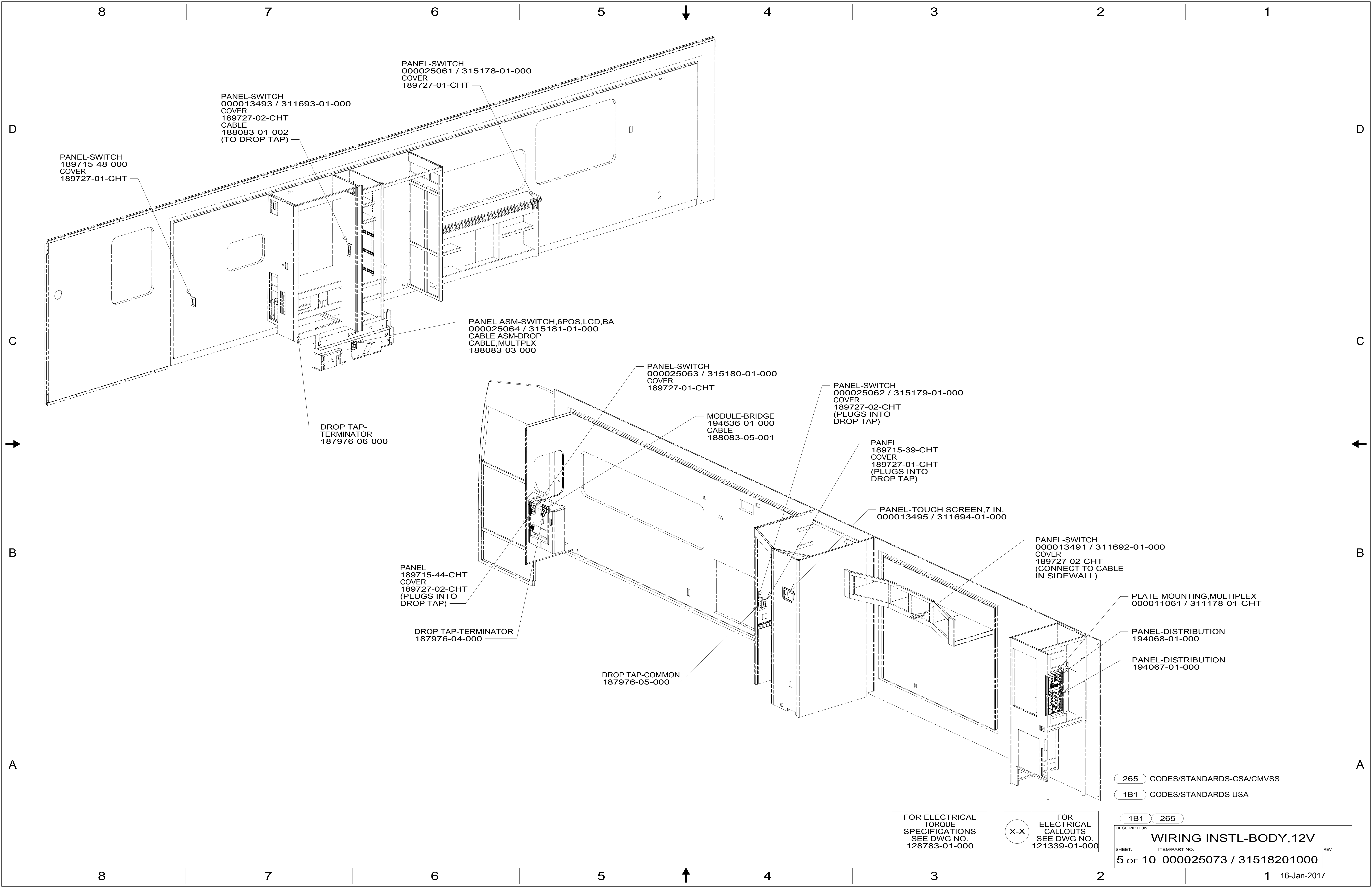
DETAIL DA

FOR ELECTRICAL TORQUE SPECIFICATIONS SEE DWG NO. 128783-01-000

FOR ELECTRICAL CALLOUTS SEE DWG NO. 121339-01-000

265 CODES/STANDARDS-CSA/CMVSS
1B1 CODES/STANDARDS USA

DESCRIPTION:	1B1 265	
WIRING INSTL-BODY, 12V		
SHEET:	ITEM/PART NO:	REV
4 of 10	000025073 / 31518201000	

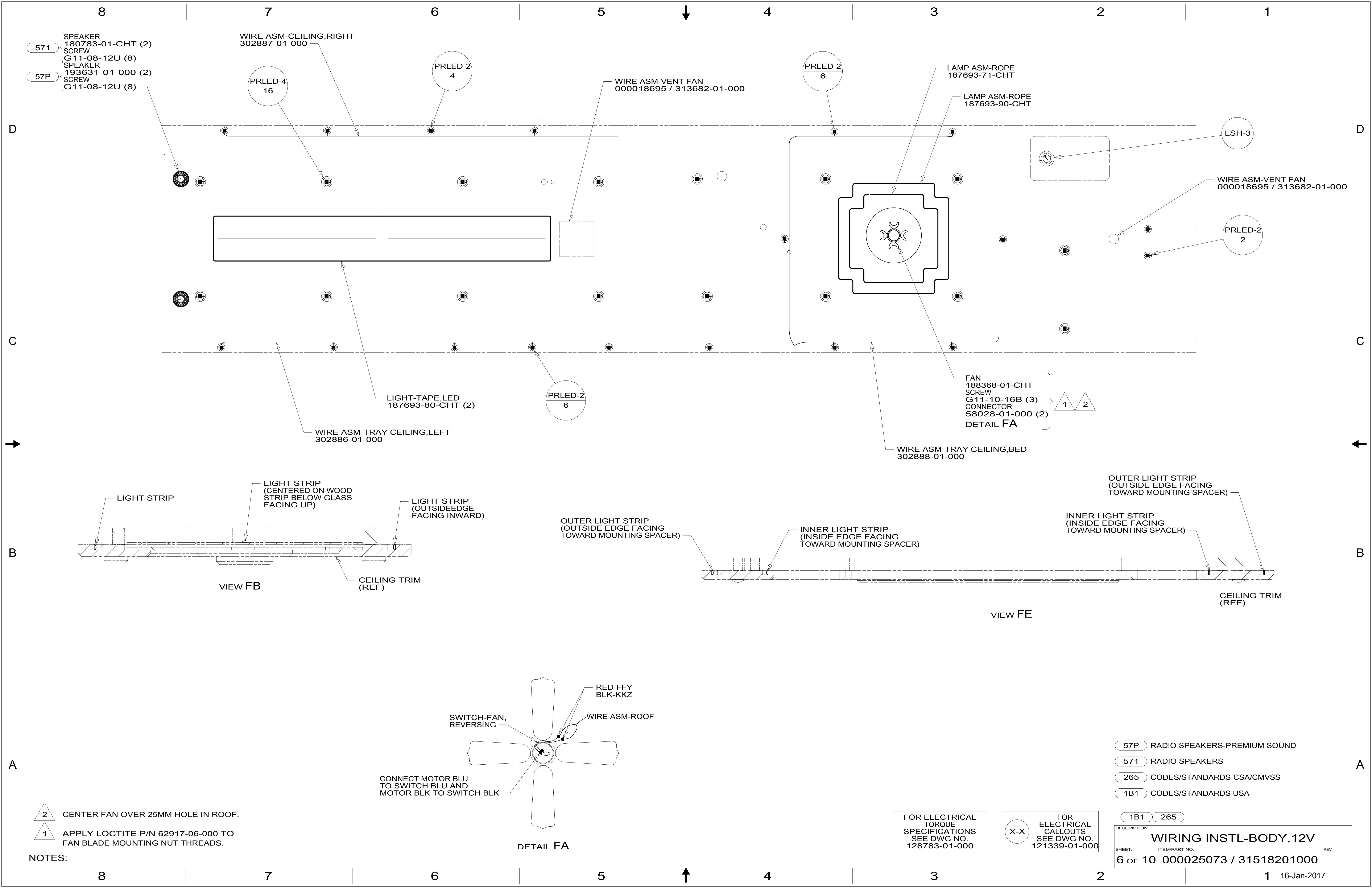


265 CODES/STANDARDS-CSA/CMVSS
 1B1 CODES/STANDARDS USA

FOR ELECTRICAL TORQUE SPECIFICATIONS SEE DWG NO. 128783-01-000

X-X FOR ELECTRICAL CALLOUTS SEE DWG NO. 121339-01-000

DESCRIPTION:	1B1 265	
WIRING INSTL-BODY, 12V		
SHEET:	ITEM/PART NO:	REV
5 OF 10	000025073 / 31518201000	



571 SPEAKER
180783-01-CHT (2)
SCREW
G11-08-12U (8)
57P SPEAKER
193631-01-000 (2)
SCREW
G11-08-12U (8)

WIRE ASM-CEILING,RIGHT
302887-01-000

PRLED-4
16

PRLED-2
4

WIRE ASM-VENT FAN
000018695 / 313682-01-000

PRLED-2
6

LAMP ASM-ROPE
187693-71-CHT

LAMP ASM-ROPE
187693-90-CHT

LSH-3

WIRE ASM-VENT FAN
000018695 / 313682-01-000

PRLED-2
2

LIGHT-TAPE,LED
187693-80-CHT (2)

PRLED-2
6

FAN
188368-01-CHT
SCREW
G11-10-16B (3)
CONNECTOR
58028-01-000 (2)
DETAIL FA

WIRE ASM-TRAY CEILING,BED
302888-01-000

WIRE ASM-TRAY CEILING,LEFT
302886-01-000

LIGHT STRIP

LIGHT STRIP
(CENTERED ON WOOD
STRIP BELOW GLASS
FACING UP)

LIGHT STRIP
(OUTSIDE EDGE
FACING INWARD)

OUTER LIGHT STRIP
(OUTSIDE EDGE FACING
TOWARD MOUNTING SPACER)

INNER LIGHT STRIP
(INSIDE EDGE FACING
TOWARD MOUNTING SPACER)

INNER LIGHT STRIP
(INSIDE EDGE FACING
TOWARD MOUNTING SPACER)

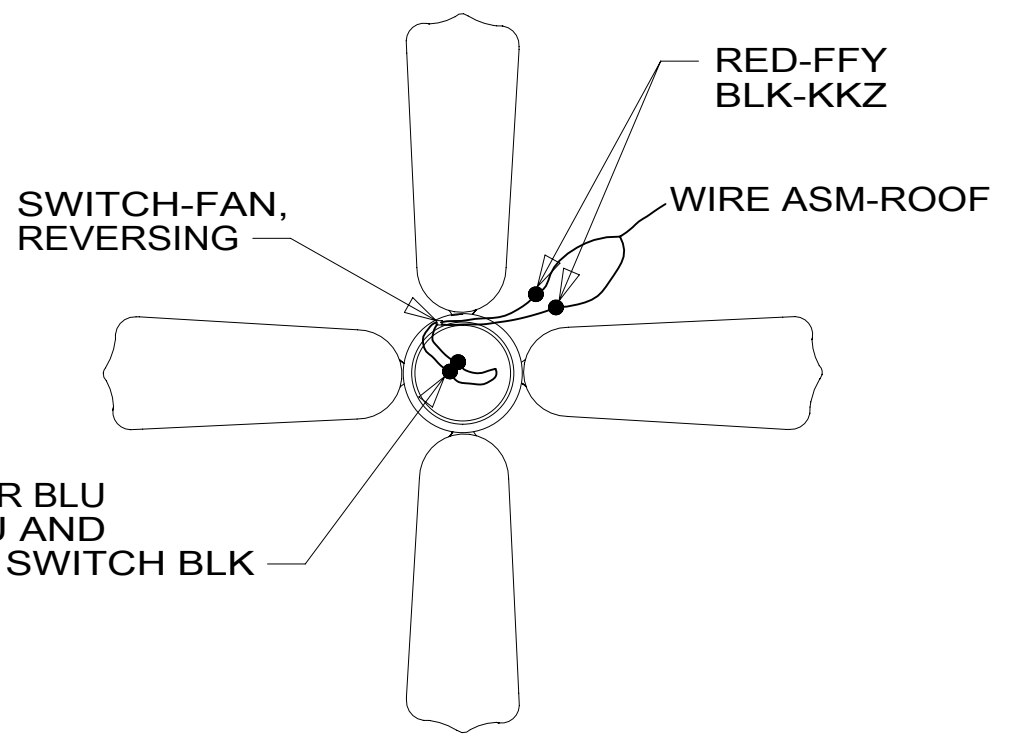
OUTER LIGHT STRIP
(OUTSIDE EDGE FACING
TOWARD MOUNTING SPACER)

VIEW FB

CEILING TRIM
(REF)

VIEW FE

CEILING TRIM
(REF)



DETAIL FA

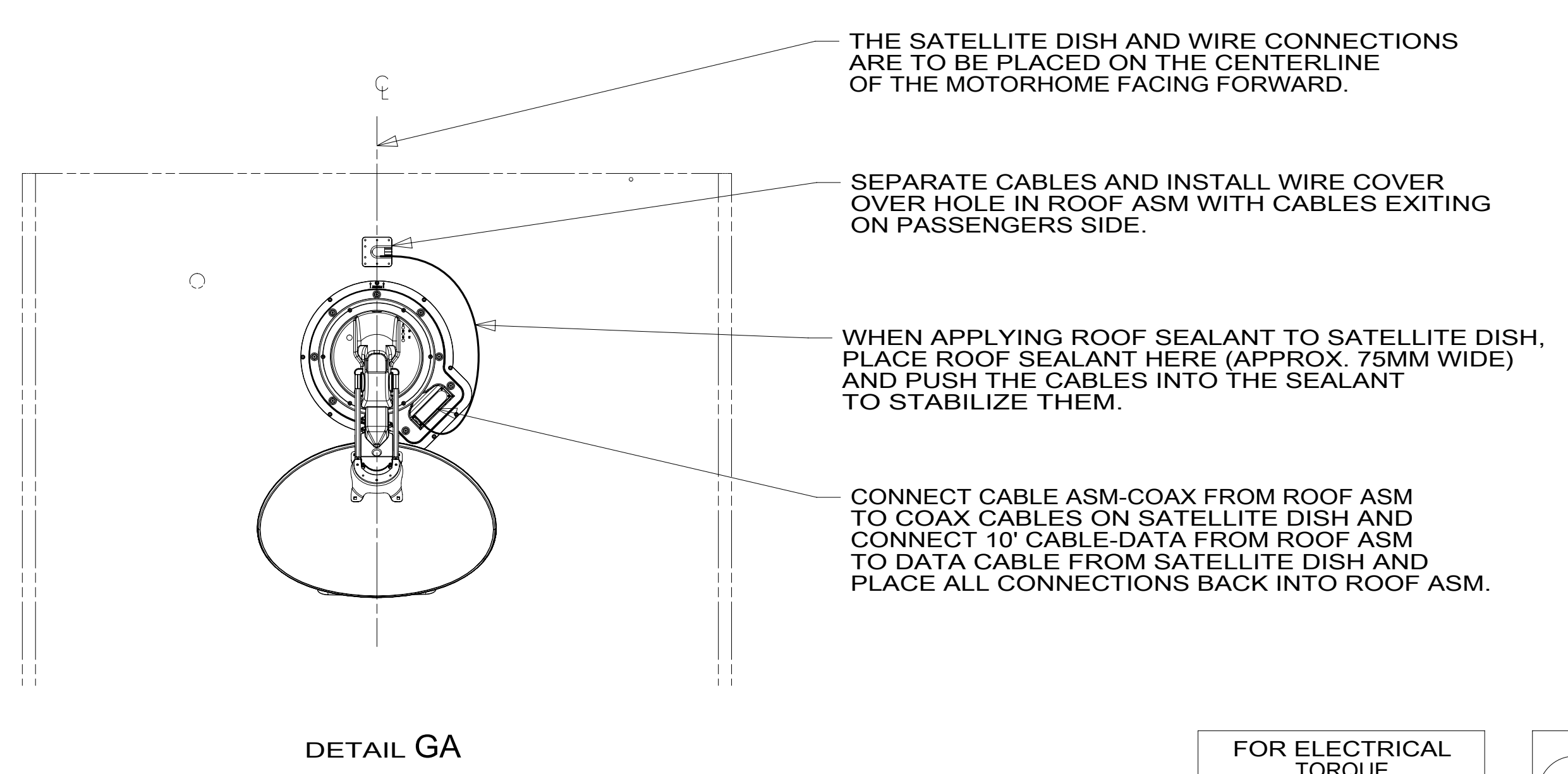
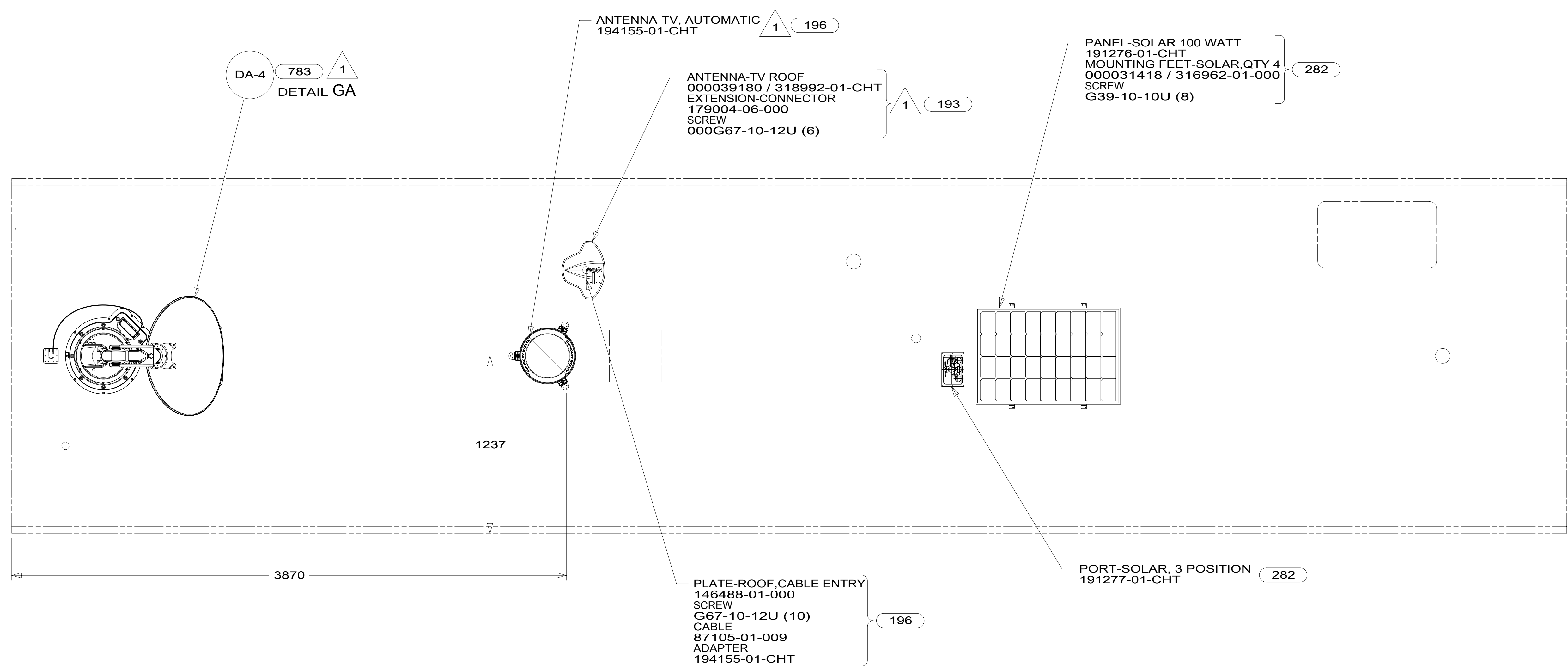
NOTES:
2 CENTER FAN OVER 25MM HOLE IN ROOF.
1 APPLY LOCTITE P/N 62917-06-000 TO FAN BLADE MOUNTING NUT THREADS.

FOR ELECTRICAL
TORQUE
SPECIFICATIONS
SEE DWG NO.
128783-01-000

FOR ELECTRICAL
CALLOUTS
SEE DWG NO.
121339-01-000

- 57P RADIO SPEAKERS-PREMIUM SOUND
- 571 RADIO SPEAKERS
- 265 CODES/STANDARDS-CSA/CMVSS
- 1B1 CODES/STANDARDS USA

DESCRIPTION: WIRING INSTL-BODY, 12V	
SHEET: 6 OF 10	ITEM/PART NO: 000025073 / 31518201000
REV 16-Jan-2017	



- 196 TV ANT-AUTO,DIRECTIONAL AMPL
- 193 TV ANT-DIGITAL AMPLIFIED
- 783 SATELLITE HD TV SYSTEM AUTOC
- 282 SOLAR PANEL - 100 WATT
- 265 CODES/STANDARDS-CSA/CMVSS
- 1B1 CODES/STANDARDS USA

1 SEE MANUFACTURER'S INSTALLATION FOR ADDITIONAL INFORMATION.

FOR ELECTRICAL TORQUE SPECIFICATIONS SEE DWG NO. 128783-01-000

FOR ELECTRICAL CALLOUTS SEE DWG NO. 121339-01-000

DESCRIPTION:	1B1 265	
WIRING INSTL-BODY, 12V		
SHEET:	ITEM/PART NO:	REV
7 of 10	000025073 / 31518201000	

8

7

6

5

4

3

2

1

TOUCH PANEL-SLIDEOUT
 171341-01-000
 SCREW
 G11-08-08U (2)

LABEL-SLIDEOUT,
 DRIVER,FRONT
 163992-01-CHT

SWITCH-SLIDEOUT
 108357-18-000
 ACTUATOR
 108356-31-CHT

LABEL-SLIDEOUT,
 PASS,FRONT
 163992-04-CHT

SWITCH-SLIDEOUT
 108357-06-000
 ACTUATOR
 108356-25-CHT

LABEL
 116549-02-000

DRIVERS
 SIDE FRONT

OUT

SLIDE
 ROOM

IN

LOCK

SLIDE
 LOCKS

UNLOCK

PASSENGER'S
 SIDE FRONT

WARNING
 CRUSH HAZARD: Keep people and objects
 clear of the inside and outside of the slide
 room when operating. Failure to comply could
 result in death or serious injury.

DETAIL HA

265 CODES/STANDARDS-CSA/CMVSS

1B1 CODES/STANDARDS USA

1B1 265

FOR ELECTRICAL
 TORQUE
 SPECIFICATIONS
 SEE DWG NO.
 128783-01-000

FOR
 ELECTRICAL
 CALLOUTS
 SEE DWG NO.
 121339-01-000

DESCRIPTION:
WIRING INSTL-BODY, 12V

SHEET: 8 OF 10 ITEM/PART NO: 000025073 / 31518201000 REV

1 16-Jan-2017

8

7

6

5

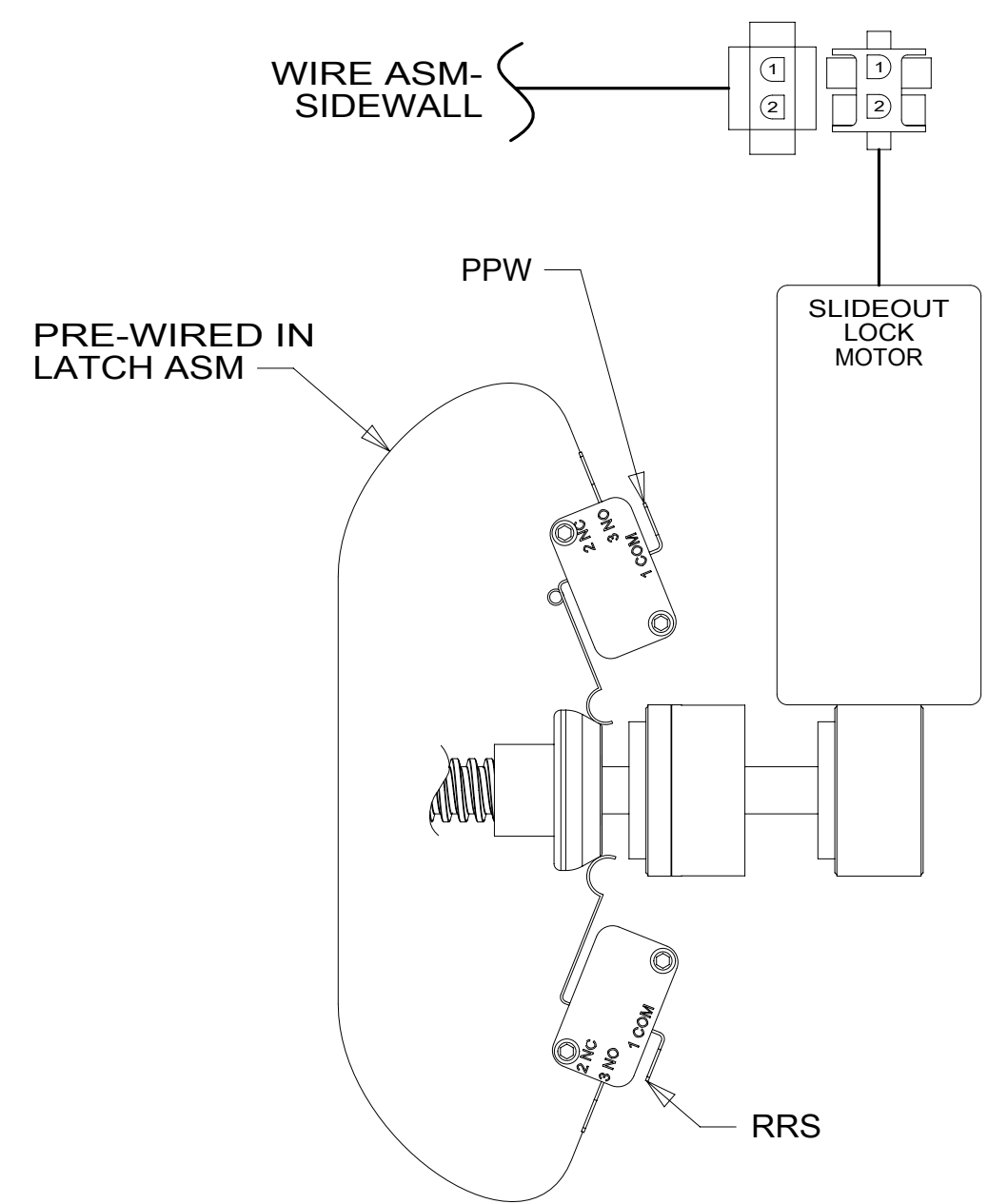
4

3

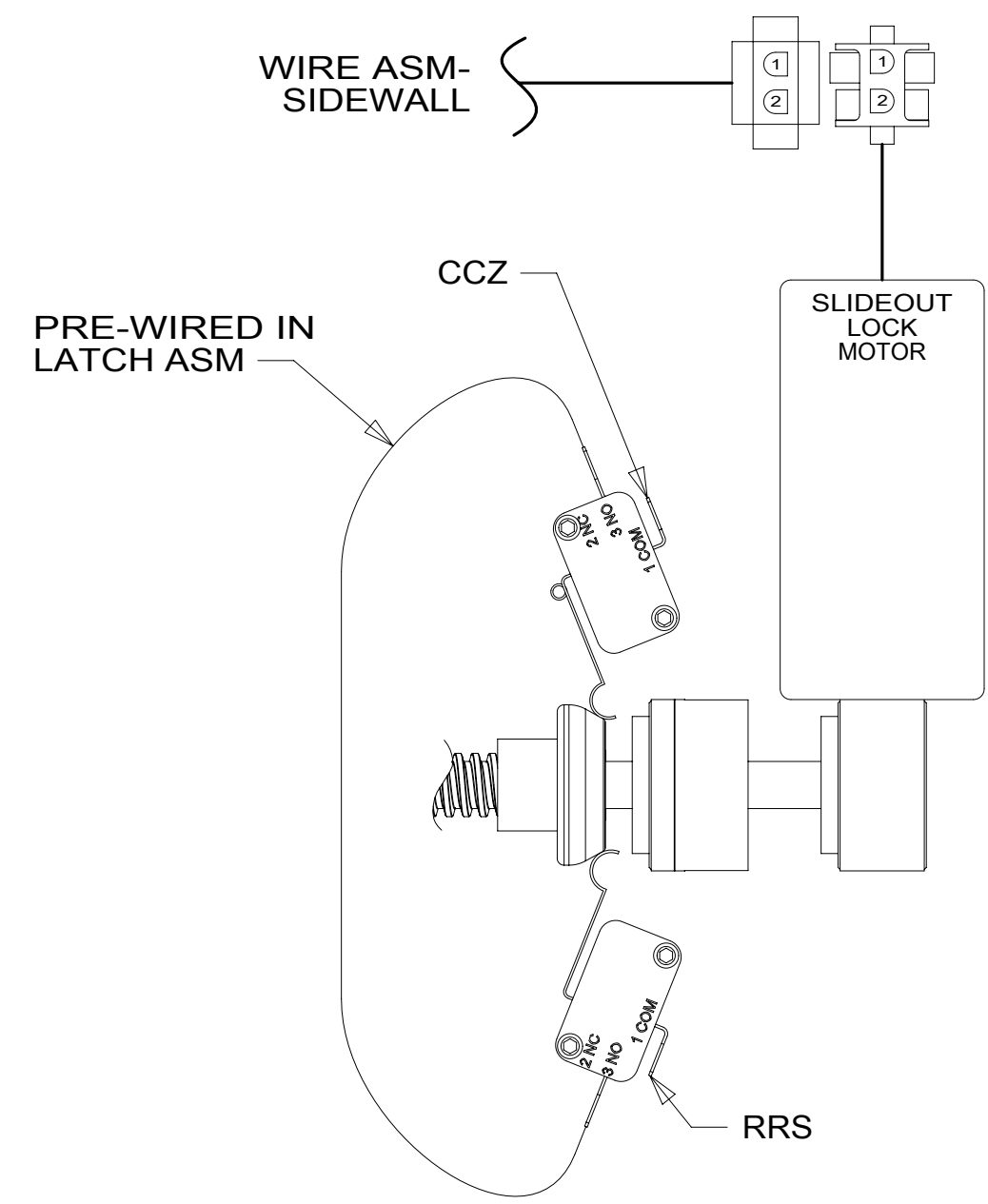
2

1

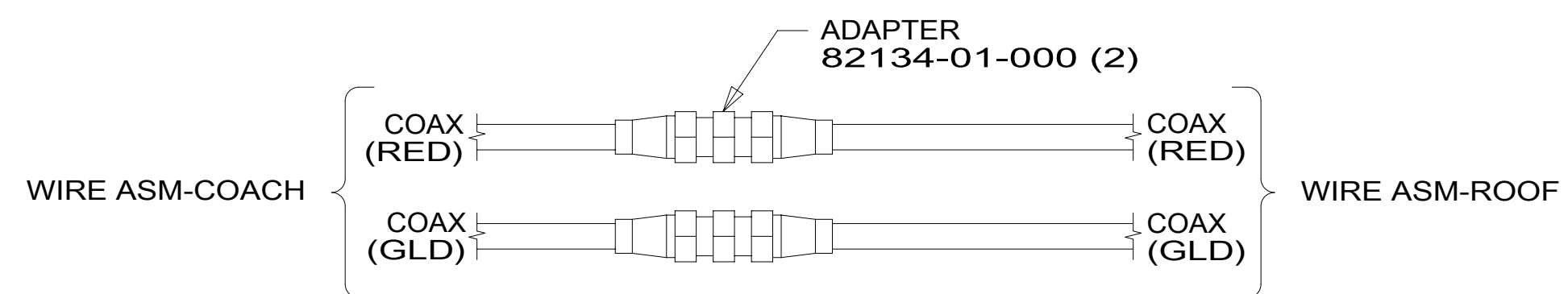
8 7 6 5 4 3 2 1



DETAIL JA



DETAIL JB



DETAIL JC

265 CODES/STANDARDS-CSA/CMVSS

1B1 CODES/STANDARDS USA

1B1 265

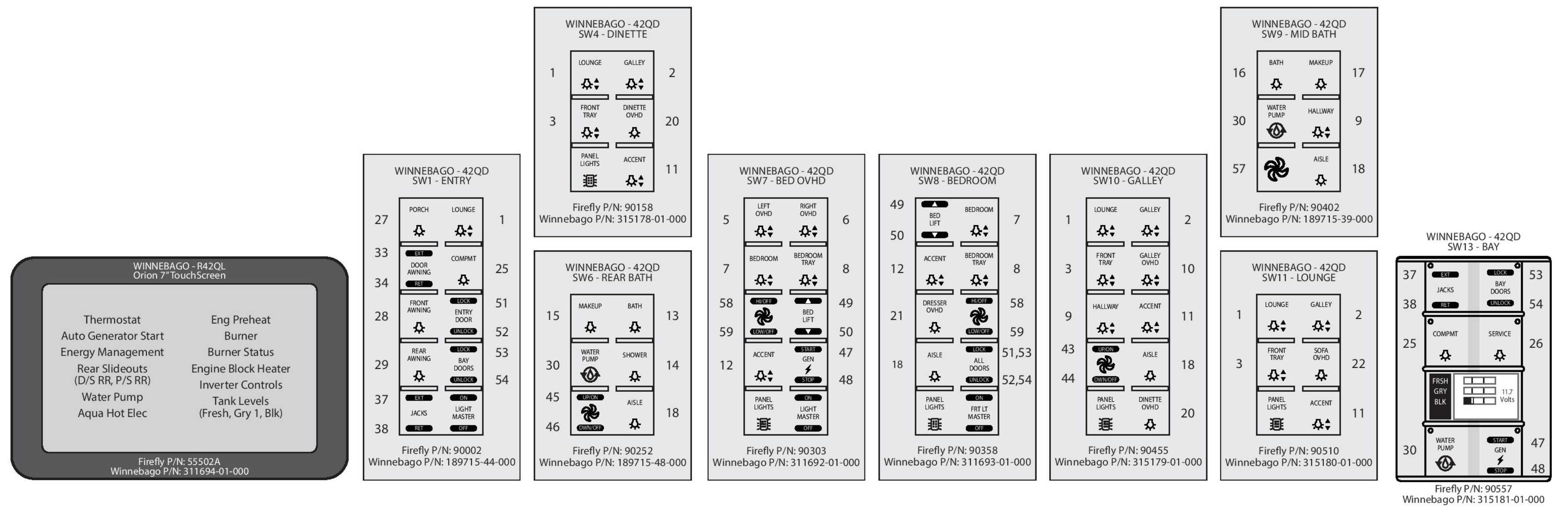
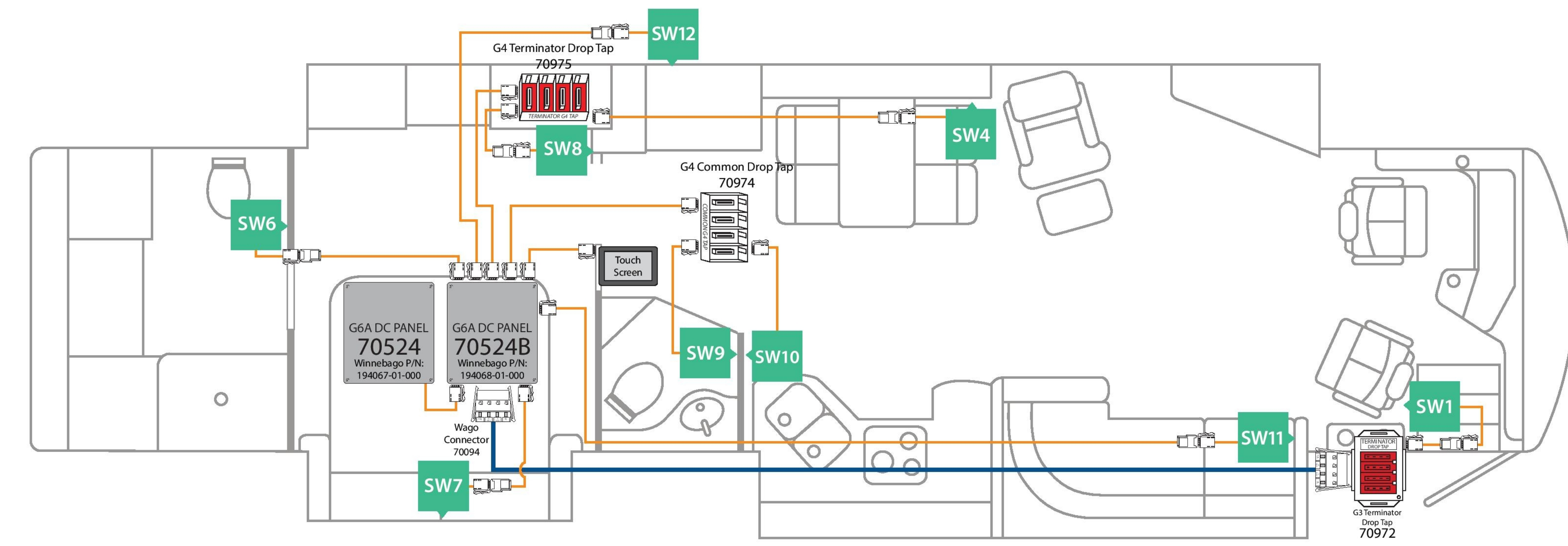
FOR ELECTRICAL TORQUE SPECIFICATIONS SEE DWG NO. 128783-01-000

FOR ELECTRICAL CALLOUTS SEE DWG NO. 121339-01-000

DESCRIPTION: WIRING INSTL-BODY, 12V

SHEET: 9 OF 10 ITEM/PART NO: 000025073 / 31518201000 REV

8 7 6 5 4 3 2 1 16-Jan-2017



WINNEBAGO 2016 - 42QD			DI: AD	Network Legend	Drop Cable Connections
Network Wiring Diagram and Switch Panel Layout			PI: AD		
SSP-14 (6v7)	REV 1v2	06/27/16			

265 CODES/STANDARDS-CSA/CMVSS
1B1 CODES/STANDARDS USA

THIS SHEET FOR REFERENCE ONLY

FOR ELECTRICAL TORQUE SPECIFICATIONS SEE DWG NO. 128783-01-000

FOR ELECTRICAL CALLOUTS SEE DWG NO. 121339-01-000

DESCRIPTION:	1B1 265	
	WIRING INSTL-BODY, 12V	
SHEET:	ITEM/PART NO:	REV
10 OF 10	000025073 / 31518201000	