

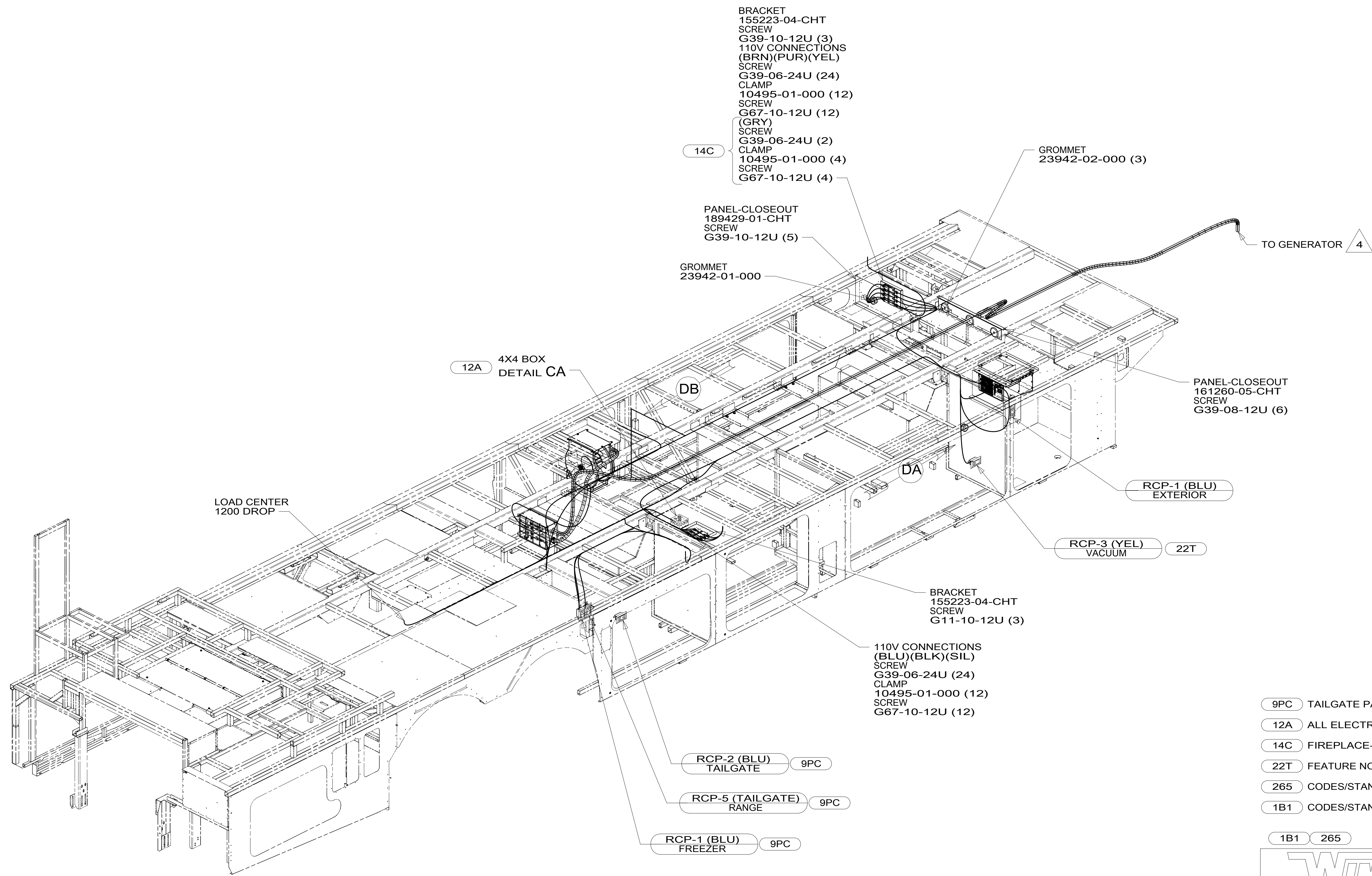
D

C

B

A

A



- BRACKET 155223-04-CHT
- SCREW G39-10-12U (3)
- 110V CONNECTIONS (BRN)(PUR)(YEL) SCREW G39-06-24U (24)
- CLAMP 10495-01-000 (12)
- SCREW G67-10-12U (12) (GRY)
- SCREW G39-06-24U (2)
- CLAMP 10495-01-000 (4)
- SCREW G67-10-12U (4)

14C

GROMMET 23942-02-000 (3)

PANEL-CLOSEOUT 189429-01-CHT SCREW G39-10-12U (5)

GROMMET 23942-01-000

TO GENERATOR 4

12A 4X4 BOX DETAIL CA

PANEL-CLOSEOUT 161260-05-CHT SCREW G39-08-12U (6)

LOAD CENTER 1200 DROP

RCP-1 (BLU) EXTERIOR

RCP-3 (YEL) VACUUM 22T

BRACKET 155223-04-CHT SCREW G11-10-12U (3)

110V CONNECTIONS (BLU)(BLK)(SIL) SCREW G39-06-24U (24)
- CLAMP 10495-01-000 (12)
- SCREW G67-10-12U (12)

RCP-2 (BLU) TAILGATE 9PC

RCP-5 (TAILGATE) RANGE 9PC

RCP-1 (BLU) FREEZER 9PC

- 9PC TAILGATE PACKAGE
- 12A ALL ELECTRIC COACH
- 14C FIREPLACE-ELECTRIC
- 22T FEATURE NOTE
- 265 CODES/STANDARDS-CSA/CMVSS
- 1B1 CODES/STANDARDS USA



4 SEE GENERATOR INSTL FOR ADDITIONAL INFORMATION.

3. WIRES THAT REST ON WIRE TRAYS ARE TO BE TIED DOWN WITH WIRE TIE 8343-04-000.

2. CLAMP TO FLOOR SUPPORT TUBES AS NECESSARY WITH CLAMP 10497-01-000.

1. AT MINIMUM ALL WIRES TO BE SUPPORTED AND SECURED PER CODE REQUIREMENTS. USE CLAMP 10495 OR 10497 OR WIRE TIE 8343 OR 108046 AND SCREW G67-XX-XXX OR G56-XX-XXX AS APPROPRIATE FOR INSTALLATION.

NOTES:

FOR ELECTRICAL TORQUE SPECIFICATIONS SEE DWG NO. 128783-01-000

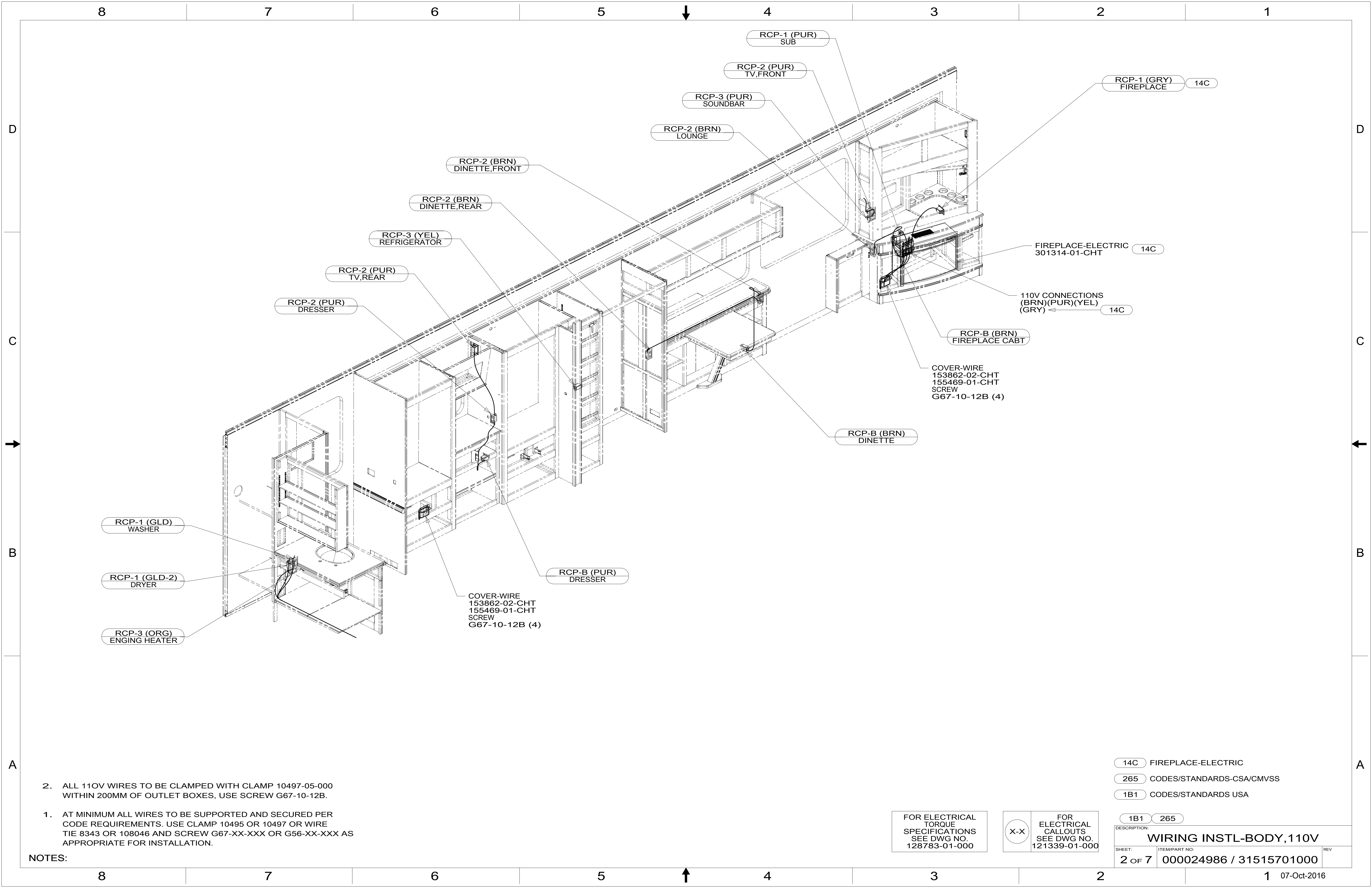
FOR ELECTRICAL CALLOUTS SEE DWG NO. 121339-01-000

DSNR:		ALL DIMENSIONS ARE IN MILLIMETERS	
DFFR:		MATERIAL:	
UNSPECIFIED TOLERANCES:			
WHOLE DIM (X)	: 3		
ONE-PLACE (X.X)	: 1.5		
TWO-PLACE (X.XX)	: 0.50		
ANGLE	: 1°		

REFER TO ES0018 FOR FASTENER TIGHTENING GUIDELINES

DESCRIPTION: WIRING INSTL-BODY, 110V

SHEET: 1 OF 7 ITEM/PART NO: 000024986 / 31515701000 REF: 17 R42QD



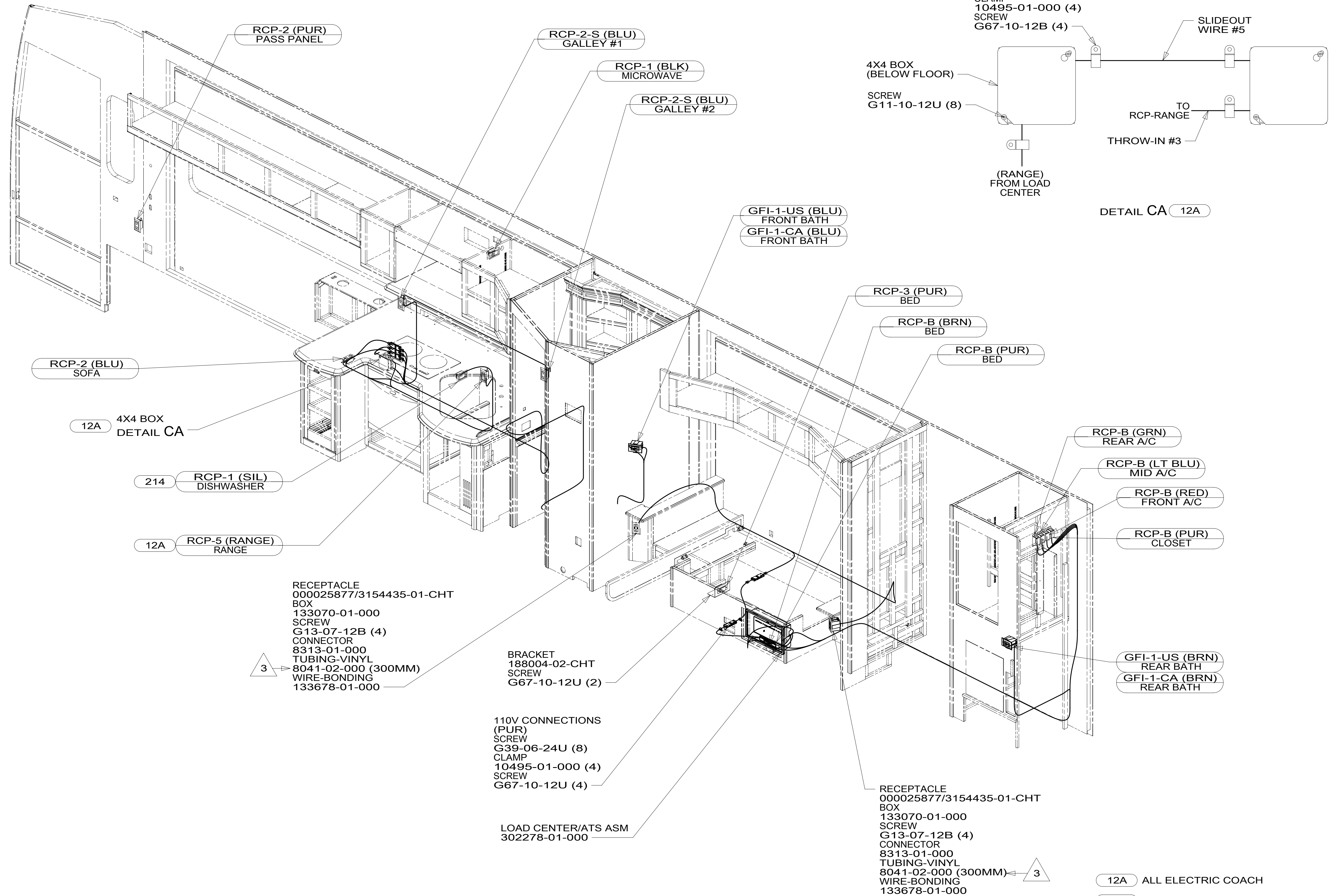
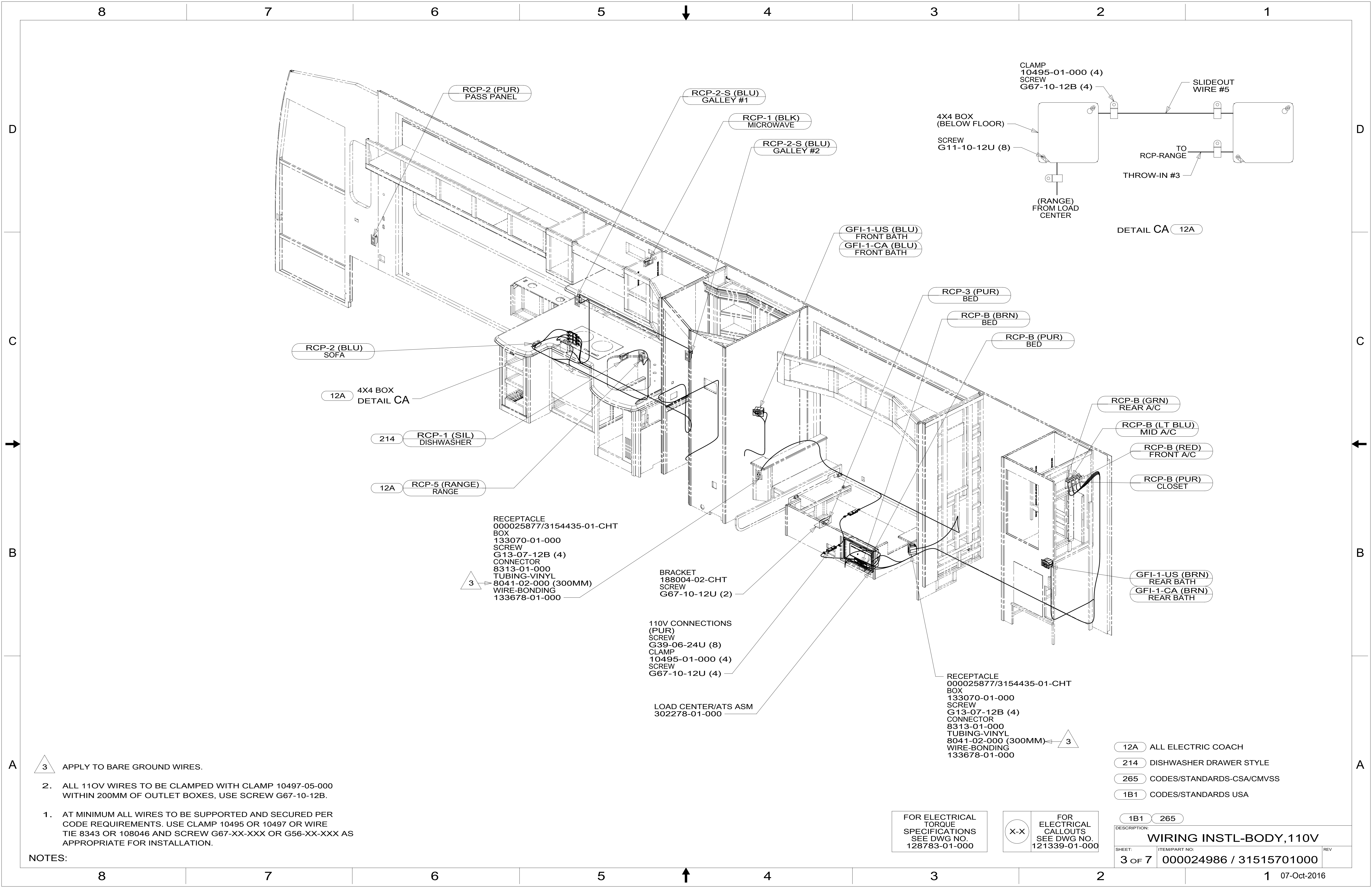
- NOTES:
1. AT MINIMUM ALL WIRES TO BE SUPPORTED AND SECURED PER CODE REQUIREMENTS. USE CLAMP 10495 OR 10497 OR WIRE TIE 8343 OR 108046 AND SCREW G67-XX-XXX OR G56-XX-XXX AS APPROPRIATE FOR INSTALLATION.
 2. ALL 110V WIRES TO BE CLAMPED WITH CLAMP 10497-05-000 WITHIN 200MM OF OUTLET BOXES, USE SCREW G67-10-12B.

FOR ELECTRICAL TORQUE SPECIFICATIONS SEE DWG NO. 128783-01-000

FOR ELECTRICAL CALLOUTS SEE DWG NO. 121339-01-000

- 14C FIREPLACE-ELECTRIC
- 265 CODES/STANDARDS-CSA/CMVSS
- 1B1 CODES/STANDARDS USA

DESCRIPTION:		1B1 265
WIRING INSTL-BODY, 110V		
SHEET:	ITEM/PART NO.:	REV
2 OF 7	000024986 / 31515701000	



3 APPLY TO BARE GROUND WIRES.

- ALL 110V WIRES TO BE CLAMPED WITH CLAMP 10497-05-000 WITHIN 200MM OF OUTLET BOXES, USE SCREW G67-10-12B.
- AT MINIMUM ALL WIRES TO BE SUPPORTED AND SECURED PER CODE REQUIREMENTS. USE CLAMP 10495 OR 10497 OR WIRE TIE 8343 OR 108046 AND SCREW G67-XX-XXX OR G56-XX-XXX AS APPROPRIATE FOR INSTALLATION.

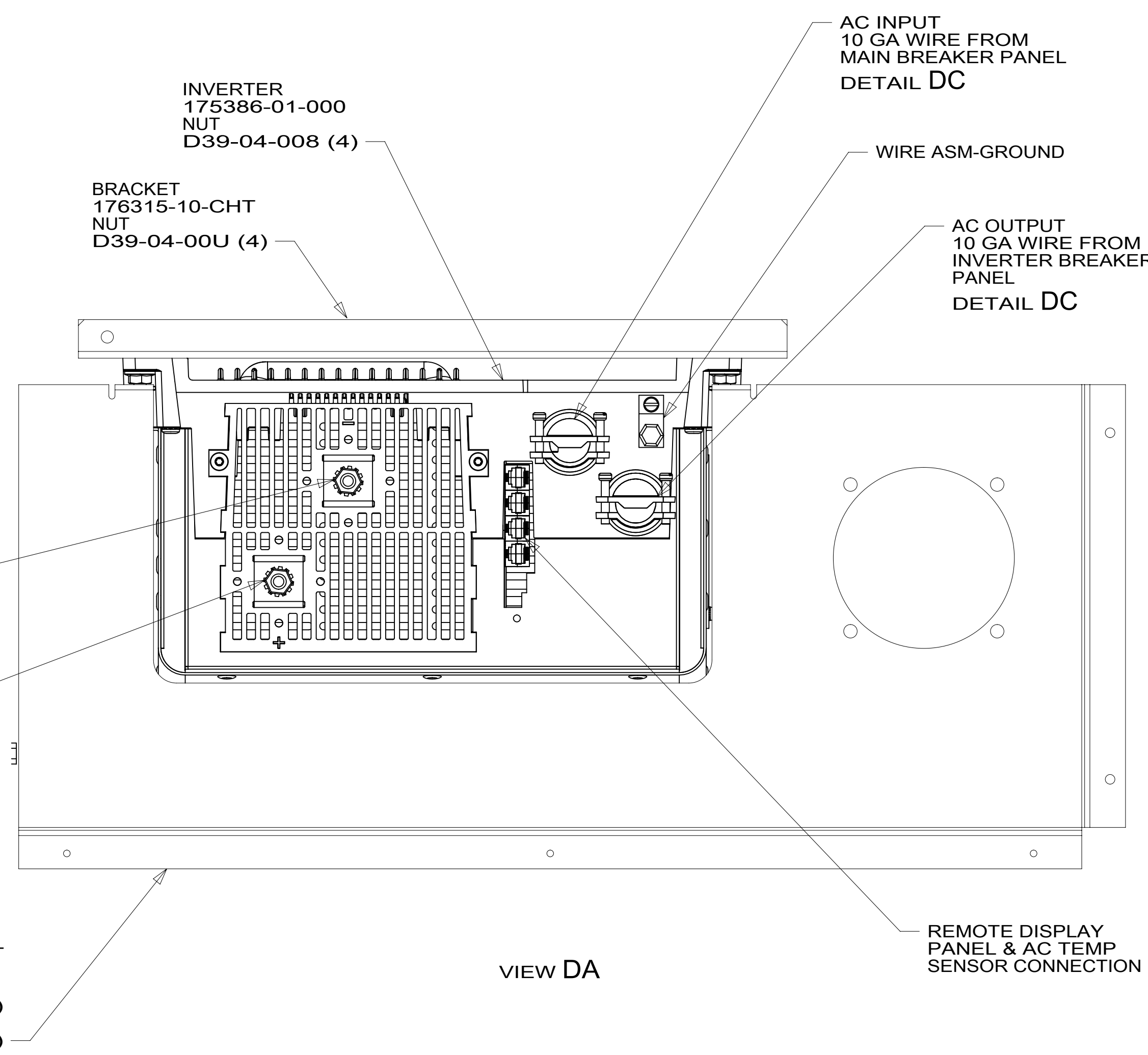
NOTES:

- 12A ALL ELECTRIC COACH
- 214 DISHWASHER DRAWER STYLE
- 265 CODES/STANDARDS-CSA/CMVSS
- 1B1 CODES/STANDARDS USA

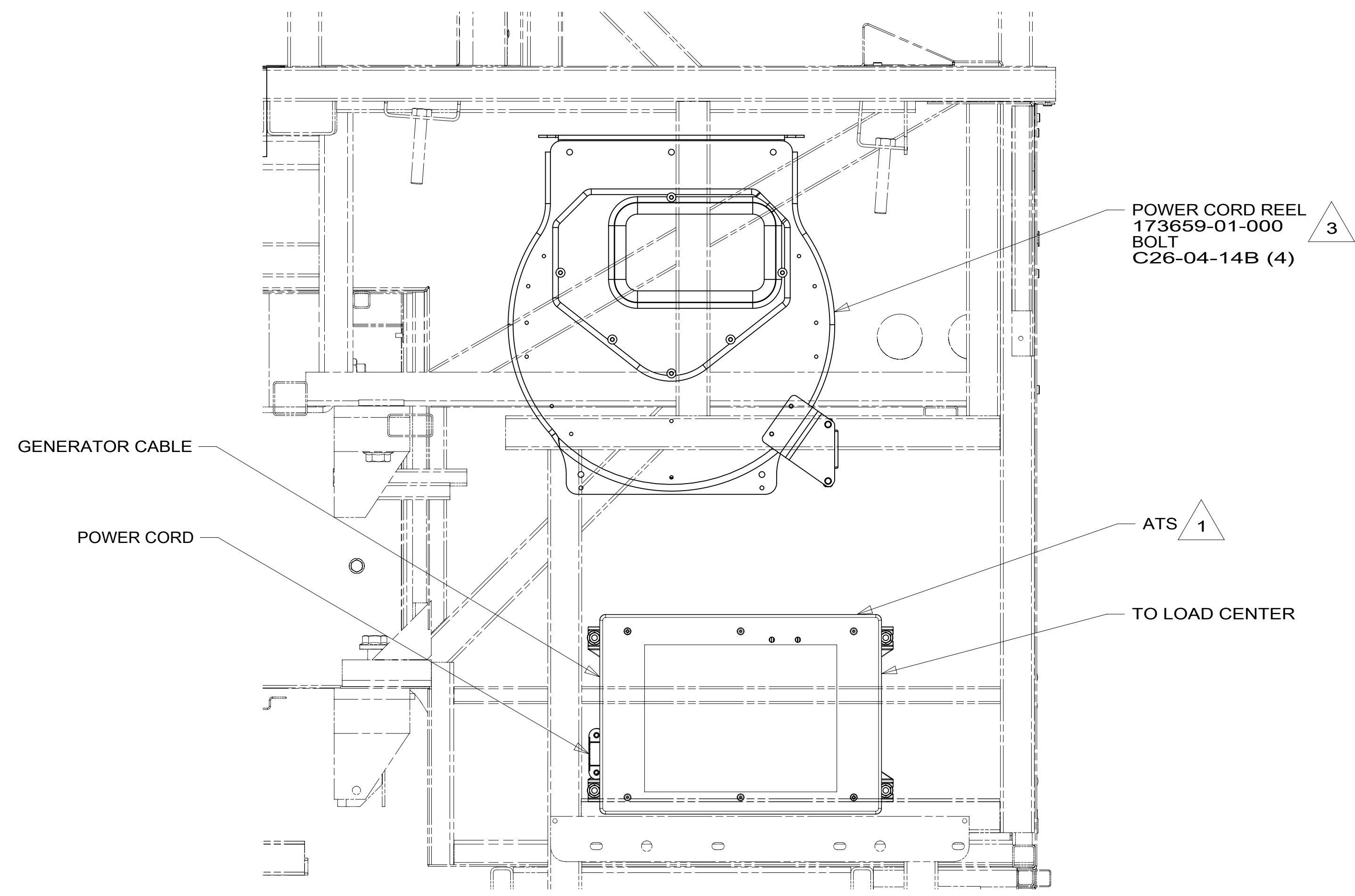
FOR ELECTRICAL TORQUE SPECIFICATIONS SEE DWG NO. 128783-01-000

FOR ELECTRICAL CALLOUTS SEE DWG NO. 121339-01-000

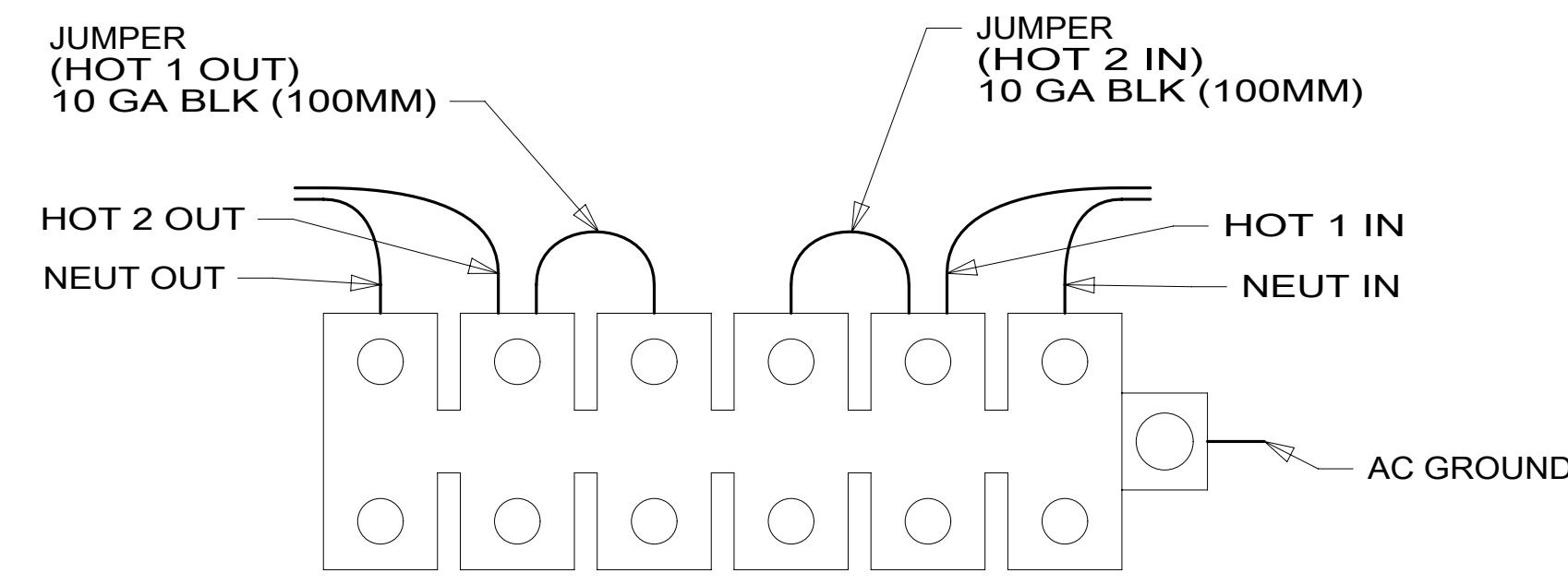
DESCRIPTION: WIRING INSTL-BODY, 110V		
SHEET: 3 OF 7	ITEM/PART NO.: 000024986 / 31515701000	REV
07-Oct-2016		



VIEW DA



VIEW DB



DETAIL DC

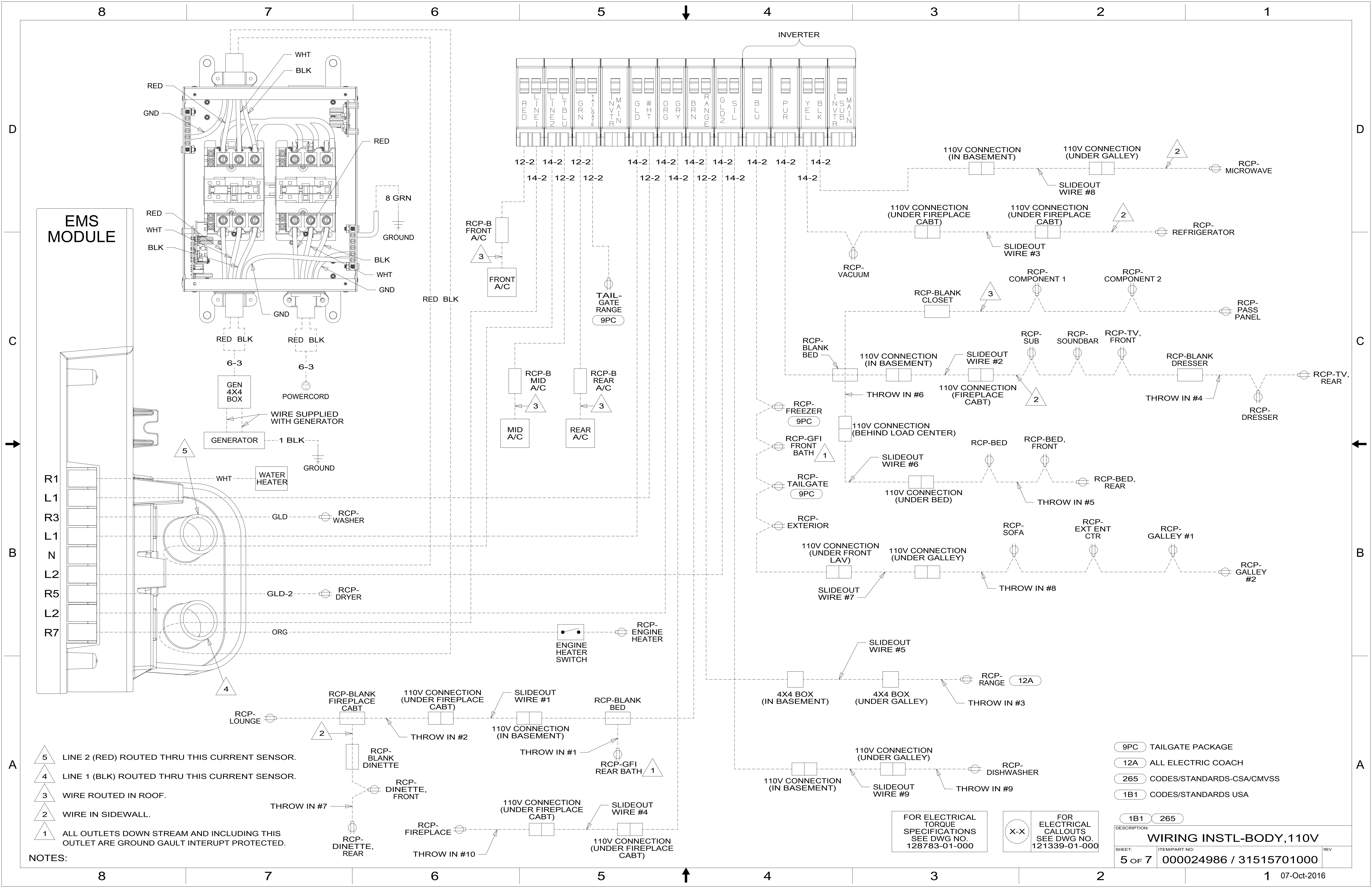
- NOTES:
- 4 TORQUE TO 10-12 FT LBS.
 - 3 INSERT BOLT FROM BOTTOM OF COMPARTMENT.
 - 2 SEE BATTERY INSTL FOR ADDITIONAL INFORMATION.
 - 1 SEE LOAD CENTER/ATS ASM FOR ADDITIONAL INFORMATION.

FOR ELECTRICAL
TORQUE
SPECIFICATIONS
SEE DWG NO.
128783-01-000

FOR
ELECTRICAL
CALLOUTS
SEE DWG NO.
121339-01-000

265 CODES/STANDARDS-CSA/CMVSS
1B1 CODES/STANDARDS USA

DESCRIPTION: WIRING INSTL-BODY, 110V	
SHEET: 4 OF 7	ITEM/PART NO: 000024986 / 31515701000
REV	



EMS MODULE

INVERTER

- NOTES:**
- 5 LINE 2 (RED) ROUTED THRU THIS CURRENT SENSOR.
 - 4 LINE 1 (BLK) ROUTED THRU THIS CURRENT SENSOR.
 - 3 WIRE ROUTED IN ROOF.
 - 2 WIRE IN SIDEWALL.
 - 1 ALL OUTLETS DOWN STREAM AND INCLUDING THIS OUTLET ARE GROUND GAULT INTERRUPT PROTECTED.

- 9PC TAILGATE PACKAGE
- 12A ALL ELECTRIC COACH
- 265 CODES/STANDARDS-CSA/CMVSS
- 1B1 CODES/STANDARDS USA

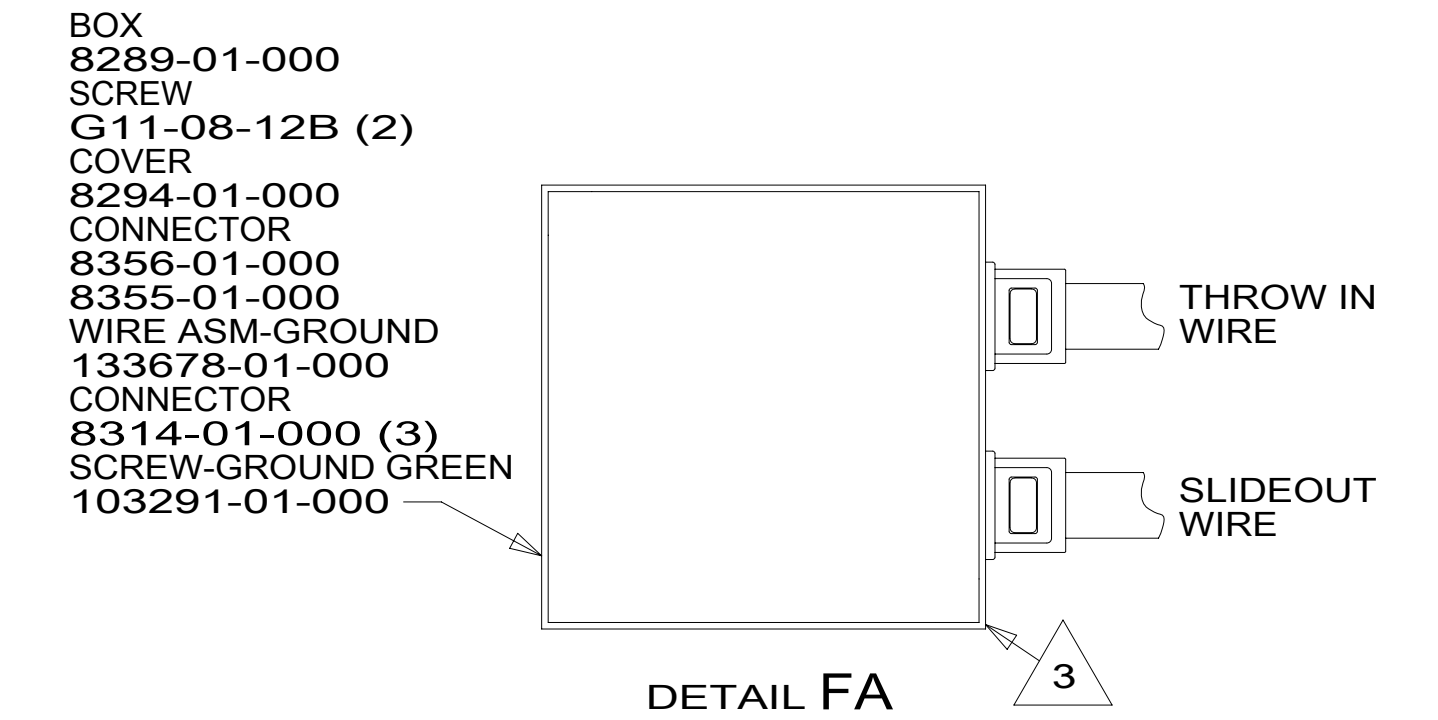
FOR ELECTRICAL TORQUE SPECIFICATIONS SEE DWG NO. 128783-01-000

FOR ELECTRICAL CALLOUTS SEE DWG NO. 121339-01-000

DESCRIPTION: WIRING INSTL-BODY, 110V		
SHEET: 5 OF 7	ITEM/PART NO: 000024986 / 31515701000	REV
07-Oct-2016		

		R42QL
RED	1B1	136135-07-071
	265	136136-07-071
MAIN	1B1	174031-01-062
	265	174031-01-062
GRN	1B1	136135-08-071
	265	136136-08-071
LT BLU	1B1	136135-21-071
	265	136136-21-071
INVERTER CHARGER MAIN	1B1	136137-01-087
	265	136138-01-087
YEL	1B1	136131-05-131 ¹
	265	136134-05-131 ¹
GLD	1B1	136131-10-070
	265	136134-10-070
GLD-2	1B1	136131-20-070
	265	136134-20-070
WHT	1B1	136135-09-067
	265	136136-09-067
RANGE	1B1	136135-01-074 ²
	265	136136-01-074 ²

		R42QL
INVERTER CHARGER SUB MAIN	1B1	136137-01-087
	265	136138-01-087
BLU	1B1	136131-02-224 ¹
	265	136134-02-224 ¹
BRN	1B1	136131-03-098 ¹
	265	136134-03-098 ¹
PUR	1B1	136131-04-095 ¹
	265	136134-04-095 ¹
ORG	1B1	136131-16-070
	265	136134-16-070
BLK	1B1	136131-06-056 ¹
	265	136134-06-056 ¹
SIL	1B1	136131-11-056 ¹
	265	136134-11-056 ¹
GRY	1B1	136131-15-092 ¹
	265	136134-15-092 ¹
GROUND MAIN		136145-01-065
GROUND ATS		136145-01-020
GROUND INVERTER		136145-04-006
CABLE ASM GEN		174031-03-095 ^{67G}
TAILGATE	1B1	136135-01-045 ^{9PC}
	265	136136-01-045



214

67G

9PC

³ CONNECT WIRES, WHT TO WHT, BLK TO BLK, GROUNDS TO GROUNDS, KEEPING CIRCUITS SEPERATED.

² SEE DETAIL FA FOR CONNECTOR INSTALLATION.

¹ SEE DETAIL GA FOR CONNECTOR INSTALLATION.

NOTES:

- ^{67G} GEN-10KW_ONAN QUIET DIESEL
- ^{9PC} TAILGATE PACKAGE
- ²¹⁴ DISHWASHER DRAWER STYLE
- ²⁶⁵ CODES/STANDARDS-CSA/CMVSS
- ^{1B1} CODES/STANDARDS USA

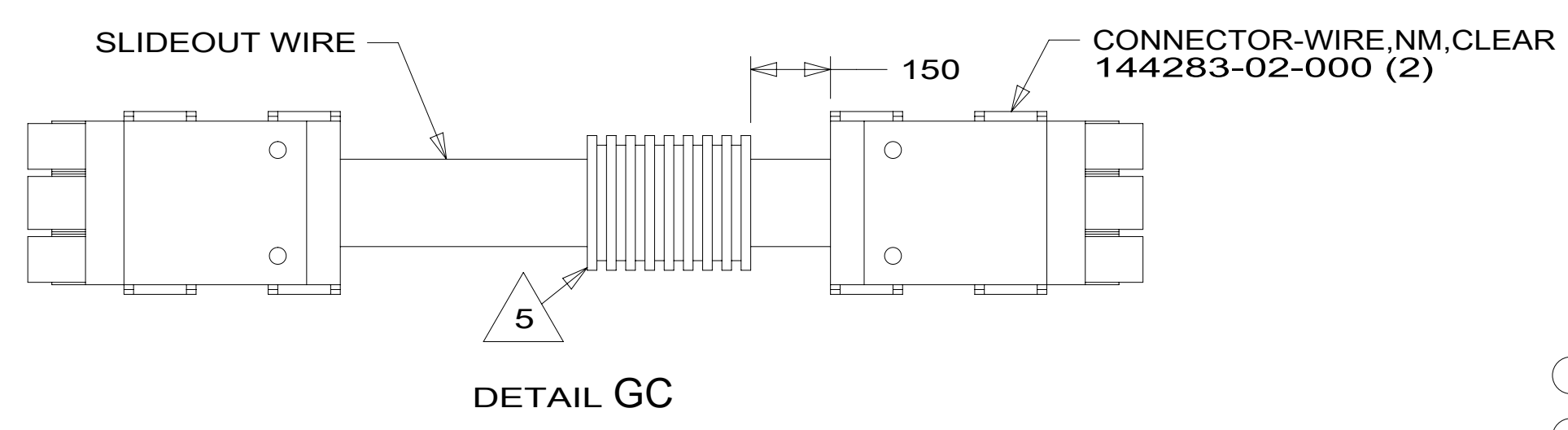
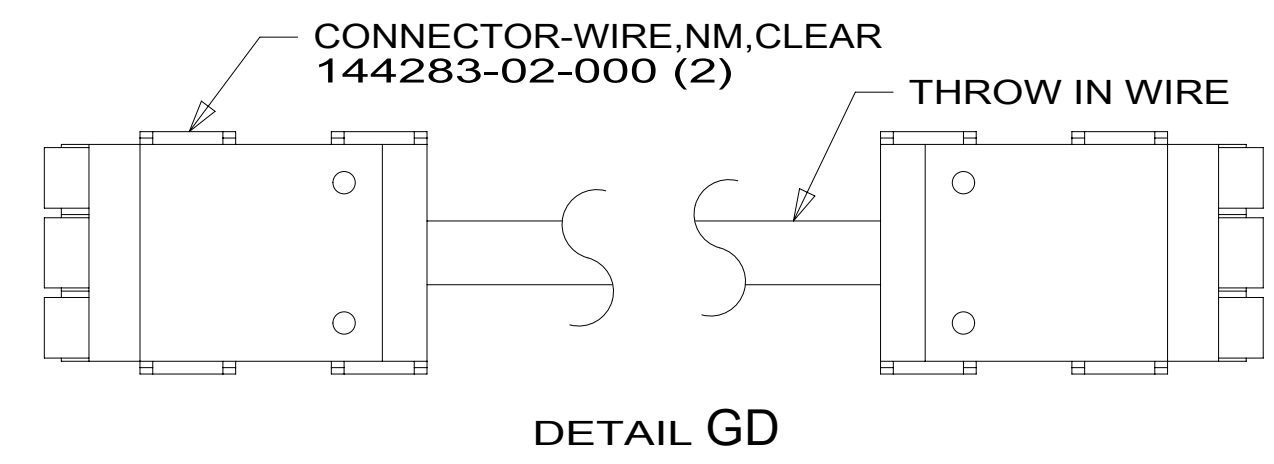
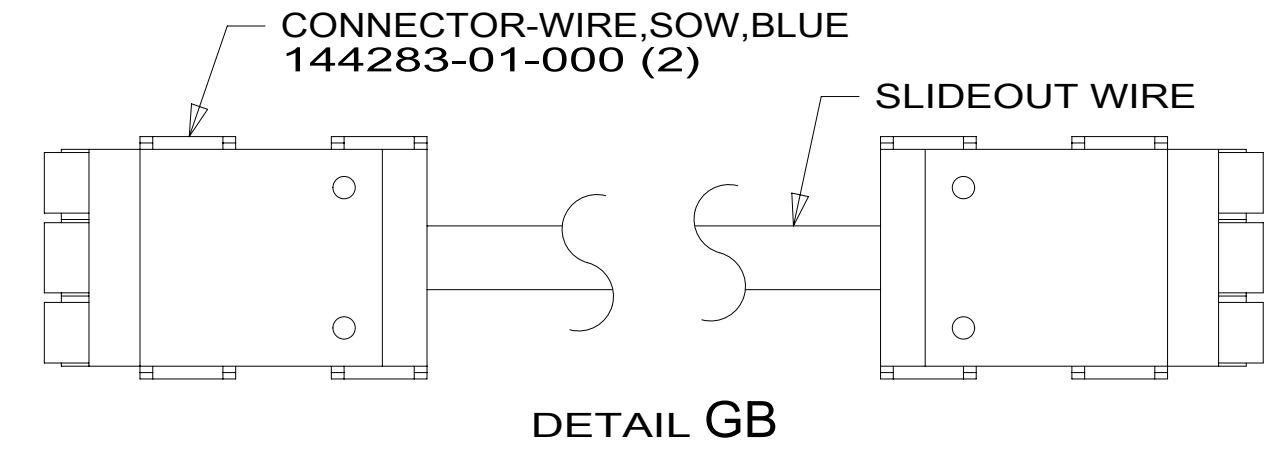
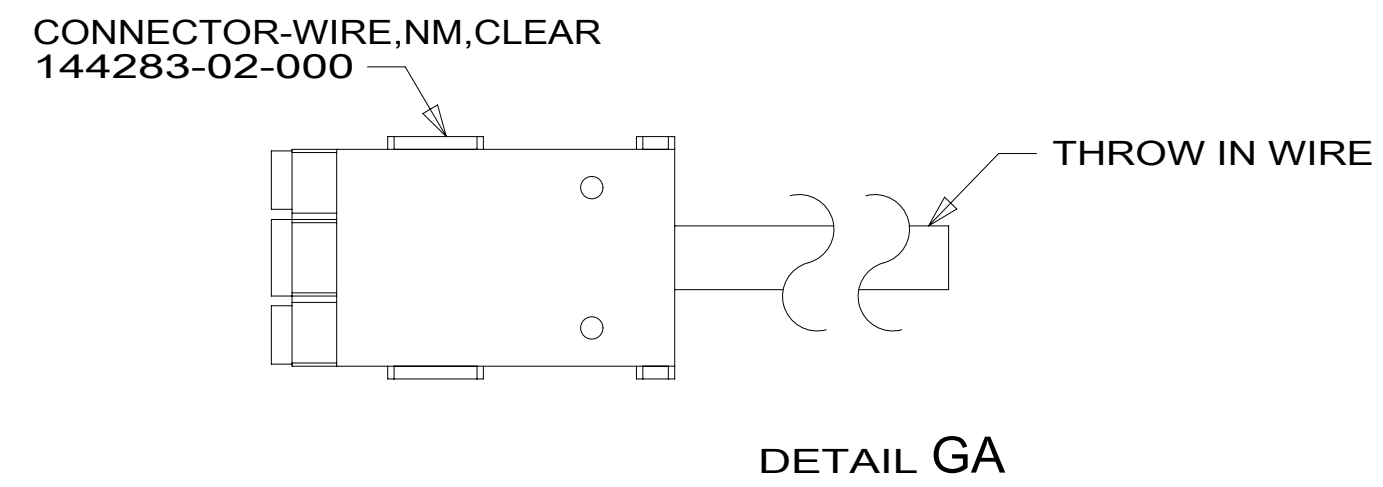
FOR ELECTRICAL TORQUE SPECIFICATIONS SEE DWG NO. 128783-01-000

FOR ELECTRICAL CALLOUTS SEE DWG NO. 121339-01-000

DESCRIPTION:	
WIRING INSTL-BODY, 110V	
SHEET:	ITEM/PART NO:
6 OF 7	000024986 / 31515701000
REV	
1 07-Oct-2016	

		R42QL	
SLIDEOUT WIRE #1		136151-03-025	4
SLIDEOUT WIRE #2		136151-04-025	4
SLIDEOUT WIRE #3		136151-05-025	4
SLIDEOUT WIRE #4		136151-15-025	4
SLIDEOUT WIRE #5		136152-01-042	3
SLIDEOUT WIRE #6		136151-04-022	2
SLIDEOUT WIRE #7		136151-02-070	2
SLIDEOUT WIRE #8		136151-06-070	2
SLIDEOUT WIRE #9		136151-11-070	2
THROW IN WIRE #1	1B1	136131-03-052	
	265	136134-03-052	
THROW IN WIRE #2	1B1	136131-03-032	1
	265	136134-03-032	1
THROW IN WIRE #3	1B1	136135-01-017	3
	265	136136-01-017	3

		R42QL	
THROW IN WIRE #4	1B1	136131-04-030	
	265	136134-04-030	
THROW IN WIRE #5	1B1	136131-04-068	1
	265	136134-04-068	1
THROW IN WIRE #6	1B1	136131-04-070	1
	265	136134-04-070	1
THROW IN WIRE #7	1B1	136131-03-035	
	265	136134-03-035	
THROW IN WIRE #8	1B1	136131-02-049	1
	265	136134-02-049	1
THROW IN WIRE #9	1B1	136131-11-025	1
	265	136134-11-025	1
THROW IN WIRE #10	1B1	136131-15-008	
	265	136134-15-008	



- NOTES:
- 5 APPLY 300MM OF CONDUIT-CONVOLUTE 41953-05-000 OVER WIRE AT DIMENSION SHOWN AND SECURE BOTH ENDS OF TUBING TO WIRE WITH TAPE 8363-01-000.
 - 4 SEE DETAIL GC FOR CONNECTOR INSTALLATION.
 - 3 SEE DETAIL GD FOR CONNECTOR INSTALLATION.
 - 2 SEE DETAIL GB FOR CONNECTOR INSTALLATION.
 - 1 SEE DETAIL GA FOR CONNECTOR INSTALLATION.

- 214 DISHWASHER DRAWER STYLE
- 265 CODES/STANDARDS-CSA/CMVSS
- 1B1 CODES/STANDARDS USA

FOR ELECTRICAL TORQUE SPECIFICATIONS SEE DWG NO. 128783-01-000

FOR ELECTRICAL CALLOUTS SEE DWG NO. 121339-01-000

DESCRIPTION:	
1B1 265 WIRING INSTL-BODY, 110V	
SHEET:	ITEM/PART NO. REV
7 OF 7	000024986 / 31515701000