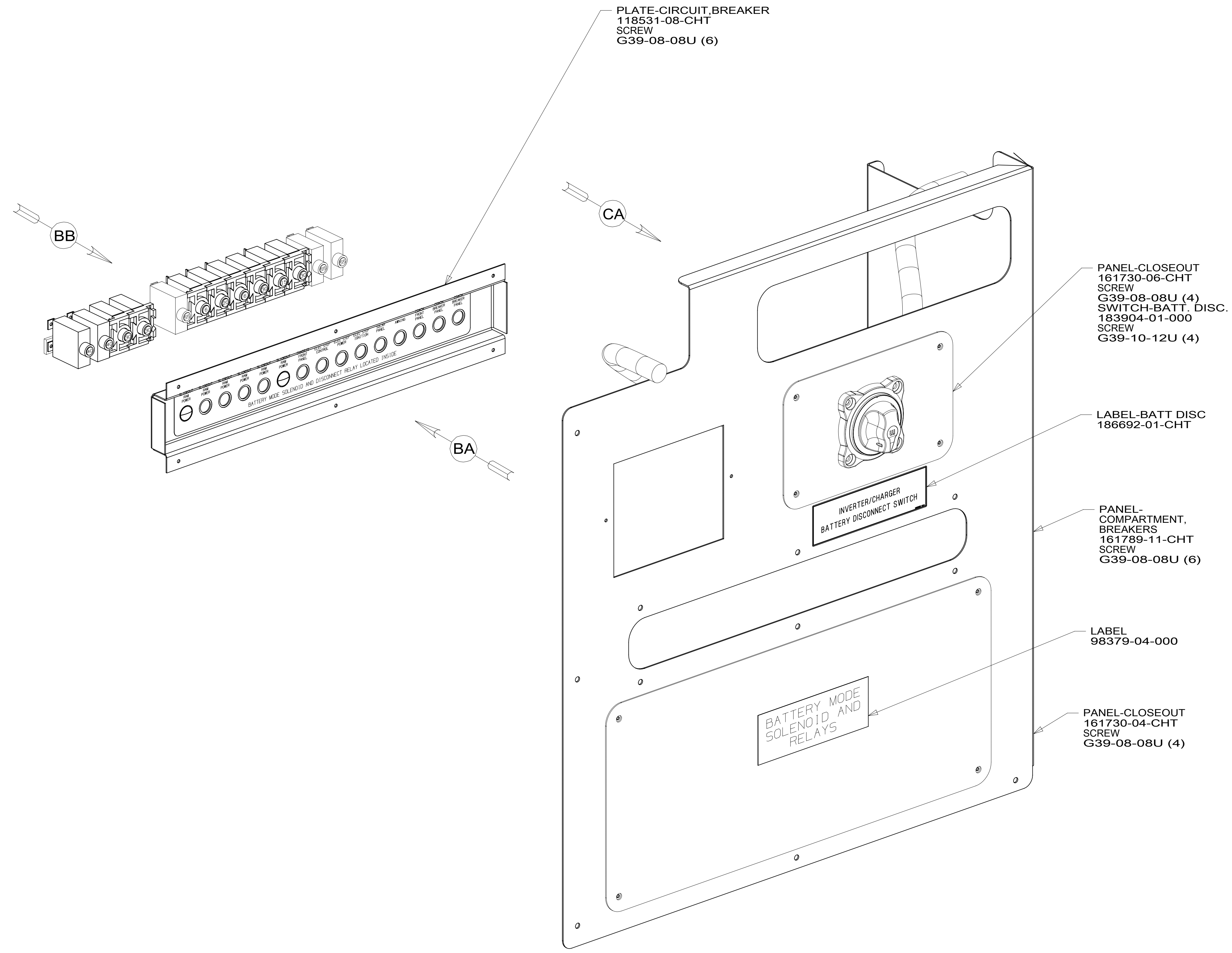


8 7 6 5 4 3 2 1

D
C
B
A



- 265 CODES/STANDARDS-CSA/CMVSS
- 1B1 CODES/STANDARDS USA
- 1B1 265



DSNR:	ALL DIMENSIONS ARE IN MILLIMETERS	
DIFFR:	MATERIAL:	
UNSPECIFIED TOLERANCES:		
WHOLE DIM (X) :	3	
ONE-PLACE (X.X) :	1.5	
TWO-PLACE (X.XX) :	0.50	
ANGLE :	1°	

REFER TO ES0018 FOR FASTENER TIGHTENING GUIDELINES

WEIGHT: (LBS) FIRST USED: **16 J38Q**

CHASSIS ELECTRICAL BOX ASM

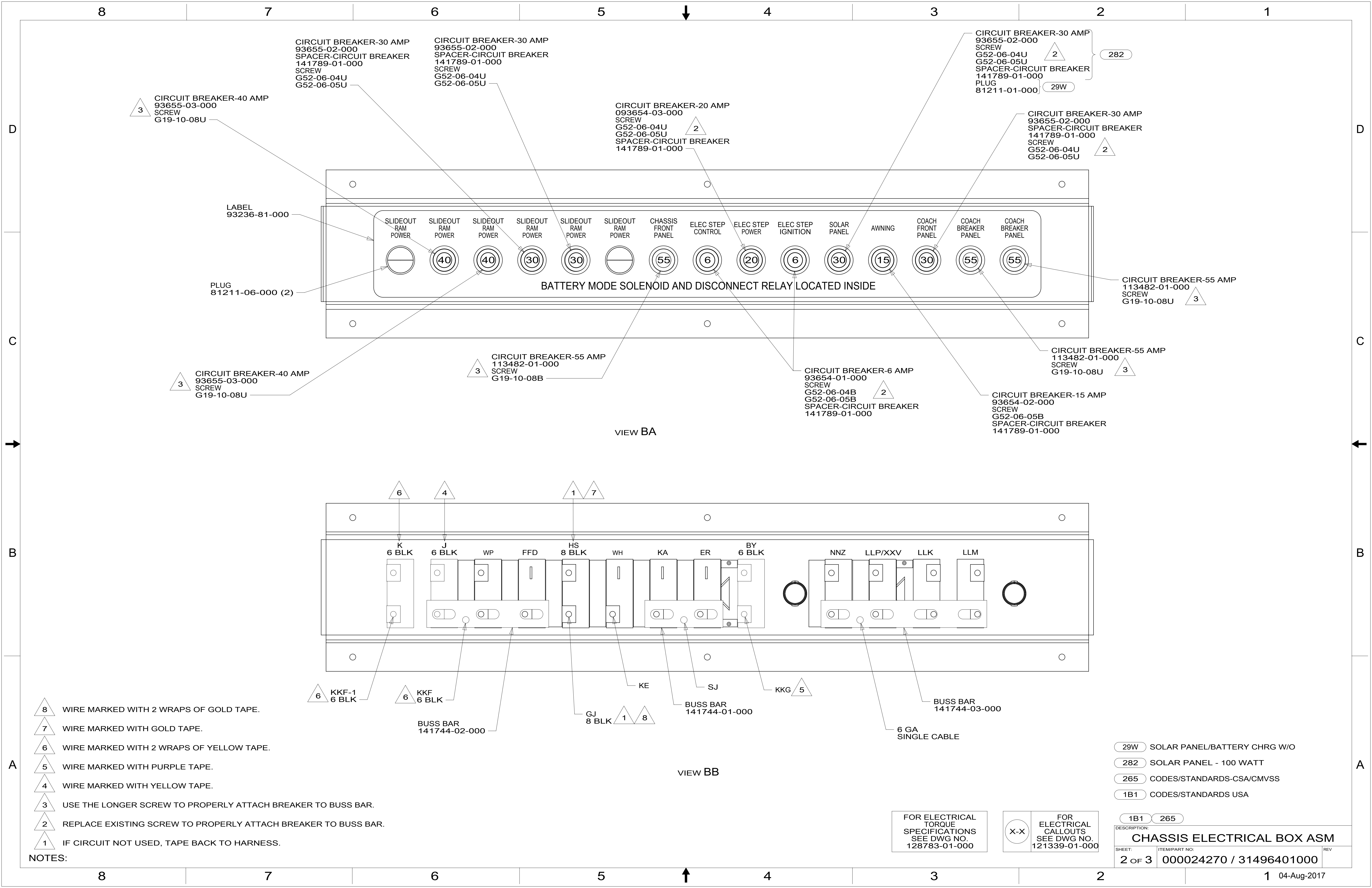
SHEET:	ITEM/PART NO.:	REV:
1 OF 3	000024270 / 31496401000	

FOR ELECTRICAL TORQUE SPECIFICATIONS SEE DWG NO. 128783-01-000

FOR ELECTRICAL CALLOUTS SEE DWG NO. 121339-01-000

8 7 6 5 4 3 2 1

D
C
B
A



CIRCUIT BREAKER-30 AMP
93655-02-000
SPACER-CIRCUIT BREAKER
141789-01-000
SCREW
G52-06-04U
G52-06-05U

CIRCUIT BREAKER-30 AMP
93655-02-000
SPACER-CIRCUIT BREAKER
141789-01-000
SCREW
G52-06-04U
G52-06-05U

CIRCUIT BREAKER-30 AMP
93655-02-000
SCREW
G52-06-04U
G52-06-05U
SPACER-CIRCUIT BREAKER
141789-01-000
PLUG
81211-01-000

CIRCUIT BREAKER-30 AMP
93655-02-000
SPACER-CIRCUIT BREAKER
141789-01-000
SCREW
G52-06-04U
G52-06-05U

CIRCUIT BREAKER-55 AMP
113482-01-000
SCREW
G19-10-08U

CIRCUIT BREAKER-55 AMP
113482-01-000
SCREW
G19-10-08U

CIRCUIT BREAKER-6 AMP
93654-01-000
SCREW
G52-06-04B
G52-06-05B
SPACER-CIRCUIT BREAKER
141789-01-000

CIRCUIT BREAKER-15 AMP
93654-02-000
SCREW
G52-06-05B
SPACER-CIRCUIT BREAKER
141789-01-000

CIRCUIT BREAKER-40 AMP
93655-03-000
SCREW
G19-10-08U

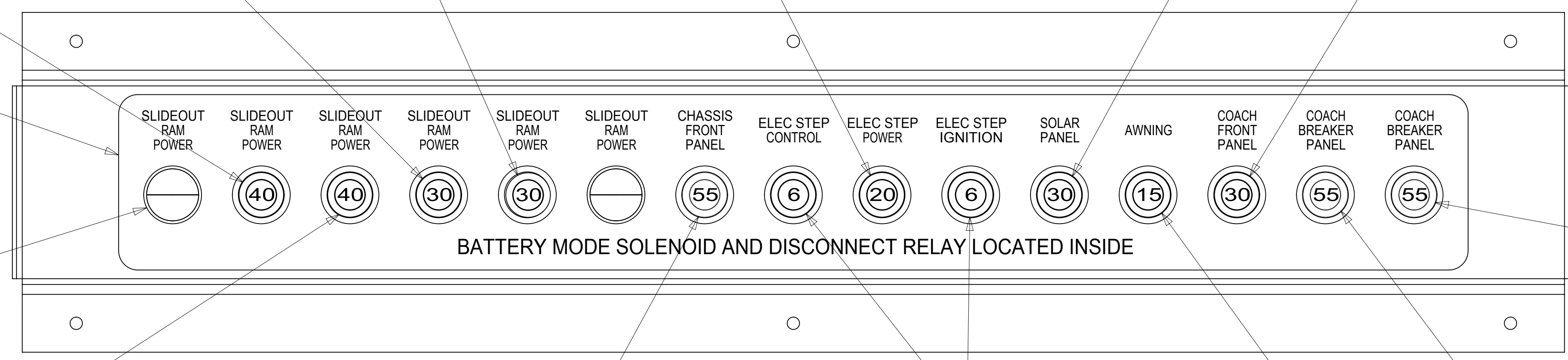
LABEL
93236-81-000

PLUG
81211-06-000 (2)

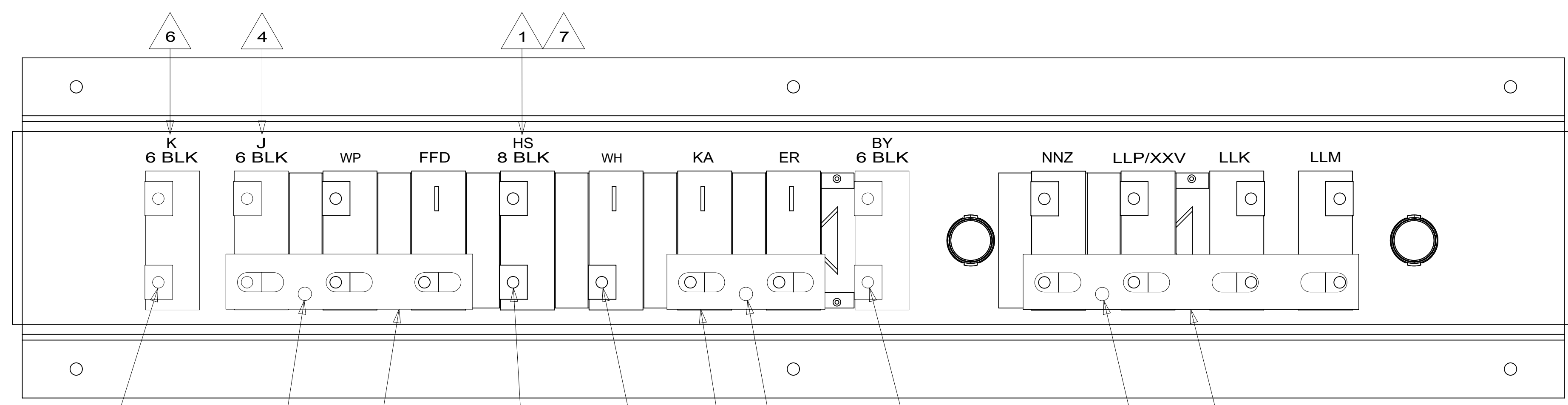
CIRCUIT BREAKER-40 AMP
93655-03-000
SCREW
G19-10-08U

CIRCUIT BREAKER-55 AMP
113482-01-000
SCREW
G19-10-08B

CIRCUIT BREAKER-20 AMP
093654-03-000
SCREW
G52-06-04U
G52-06-05U
SPACER-CIRCUIT BREAKER
141789-01-000



VIEW BA



VIEW BB

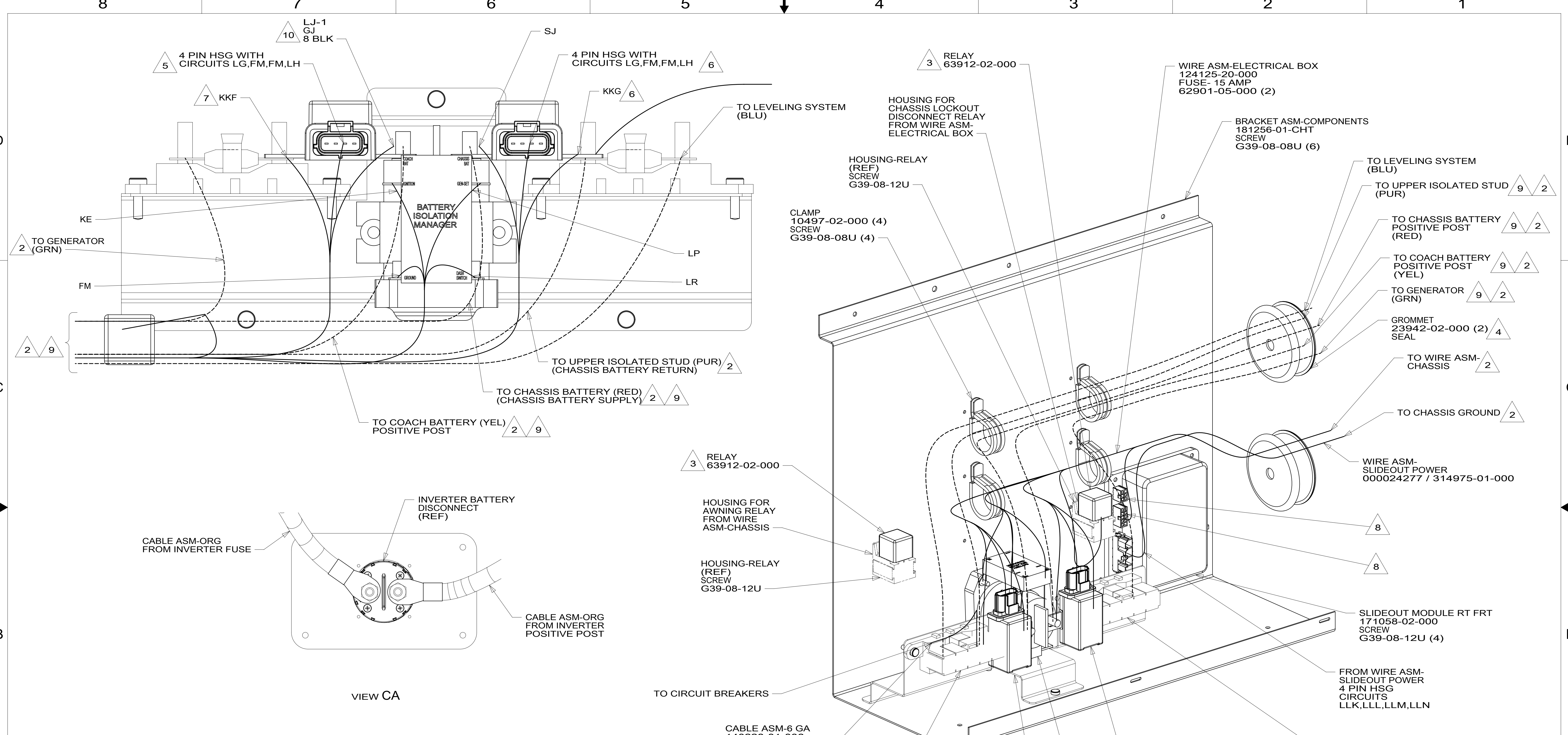
- NOTES:
- 8 WIRE MARKED WITH 2 WRAPS OF GOLD TAPE.
 - 7 WIRE MARKED WITH GOLD TAPE.
 - 6 WIRE MARKED WITH 2 WRAPS OF YELLOW TAPE.
 - 5 WIRE MARKED WITH PURPLE TAPE.
 - 4 WIRE MARKED WITH YELLOW TAPE.
 - 3 USE THE LONGER SCREW TO PROPERLY ATTACH BREAKER TO BUSS BAR.
 - 2 REPLACE EXISTING SCREW TO PROPERLY ATTACH BREAKER TO BUSS BAR.
 - 1 IF CIRCUIT NOT USED, TAPE BACK TO HARNESS.

- 29W SOLAR PANEL/BATTERY CHRNG W/O
- 282 SOLAR PANEL - 100 WATT
- 265 CODES/STANDARDS-CSA/CMVSS
- 1B1 CODES/STANDARDS USA

FOR ELECTRICAL TORQUE SPECIFICATIONS SEE DWG NO. 128783-01-000

FOR ELECTRICAL CALLOUTS SEE DWG NO. 121339-01-000

DESCRIPTION:	1B1 265
CHASSIS ELECTRICAL BOX ASM	
SHEET:	ITEM/PART NO:
2 OF 3	000024270 / 31496401000
REV	
	04-Aug-2017



- 10 WIRE MARKED WITH 2 WRAPS OF GOLD TAPE.
- 9 SEE BATTERY INSTL FOR ADDITIONAL INFORMATION.
- 8 SEE WIRING INSTL-BODY, 12V FOR ADDITIONAL INFORMATION.
- 7 WIRE MARKED WITH 2 WRAPS OF YELLOW TAPE.
- 6 WIRE MARKED WITH PURPLE TAPE.
- 5 WIRE MARKED WITH YELLOW TAPE.
- 4 SEAL OPENING AFTER ALL CABLES ARE ROUTED THROUGH.
- 3 SECURE RELAY HOUSING TO PANEL BEFORE INSTALLING RELAY.
- 2 SEE WIRING INSTL-CHASSIS FOR ADDITIONAL INFORMATION.

NOTES:
 1. SECURE CONDUIT 41953, TAB AS REQUIRED, OVER ALL WIRES IN CONTACT WITH SHARP EDGES.

FOR ELECTRICAL TORQUE SPECIFICATIONS SEE DWG NO. 128783-01-000

FOR ELECTRICAL CALLOUTS SEE DWG NO. 121339-01-000

265 CODES/STANDARDS-CSA/CMVSS
 1B1 CODES/STANDARDS USA

DESCRIPTION:	CHASSIS ELECTRICAL BOX ASM	
SHEET:	ITEM/PART NO.:	REV:
3 OF 3	000024270 / 31496401000	