

8 7 6 5 4 3 2 1

D  
C  
B  
A

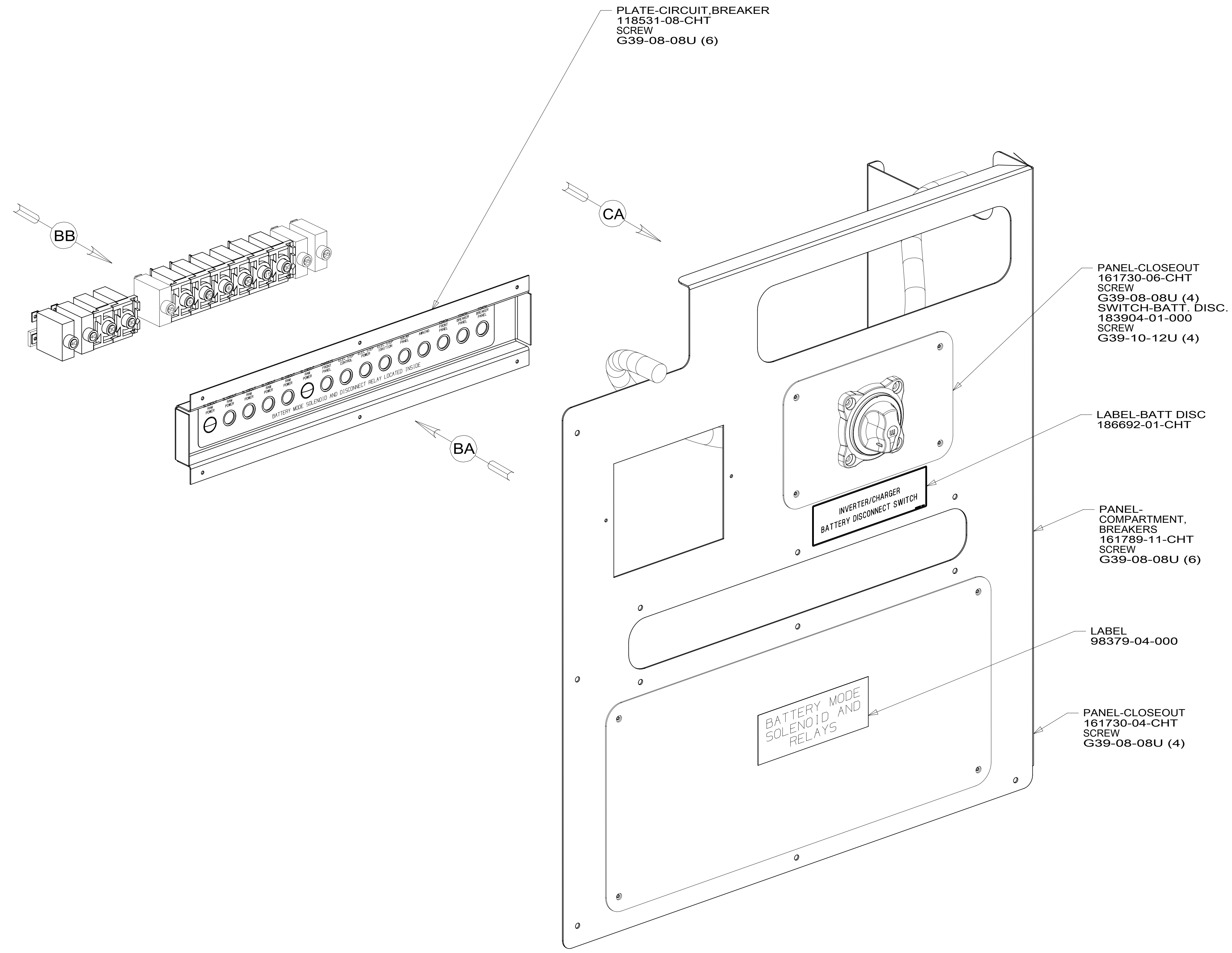


PLATE-CIRCUIT BREAKER  
118531-08-CHT  
SCREW  
G39-08-08U (6)

BB

CA

BA

PANEL-CLOSEOUT  
161730-06-CHT  
SCREW  
G39-08-08U (4)  
SWITCH-BATT. DISC.  
183904-01-000  
SCREW  
G39-10-12U (4)

LABEL-BATT DISC  
186692-01-CHT

PANEL-COMPARTMENT  
BREAKERS  
161789-11-CHT  
SCREW  
G39-08-08U (6)

LABEL  
98379-04-000

PANEL-CLOSEOUT  
161730-04-CHT  
SCREW  
G39-08-08U (4)

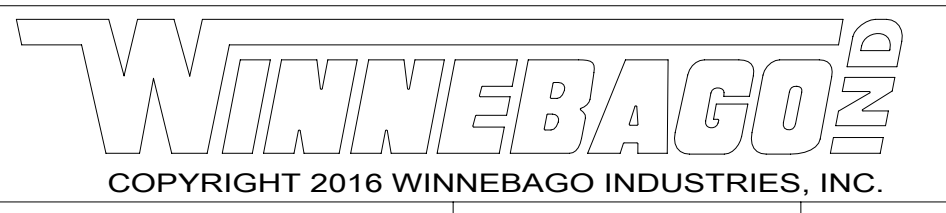
BATTERY MODE  
SOLENOID AND  
RELAYS

INVERTER/CHARGER  
BATTERY DISCONNECT SWITCH

265 CODES/STANDARDS-CSA/CMVSS

1B1 CODES/STANDARDS USA

1B1 265



DSNR:	ALL DIMENSIONS ARE IN MILLIMETERS	
DIFFR:	MATERIAL:	
UNSPECIFIED TOLERANCES:		
WHOLE DIM (X) :	3	
ONE-PLACE (X.X) :	1.5	
TWO-PLACE (X.XX) :	0.50	
ANGLE :	1°	

REFER TO ES0018 FOR FASTENER TIGHTENING GUIDELINES

WEIGHT: (LBS) FIRST USED:  
**16 J37F**

DESCRIPTION:  
**CHASSIS ELECTRICAL BOX ASM**

SHEET: 1 OF 3 ITEM/PART NO: 000024239 / 31493201000 REV:

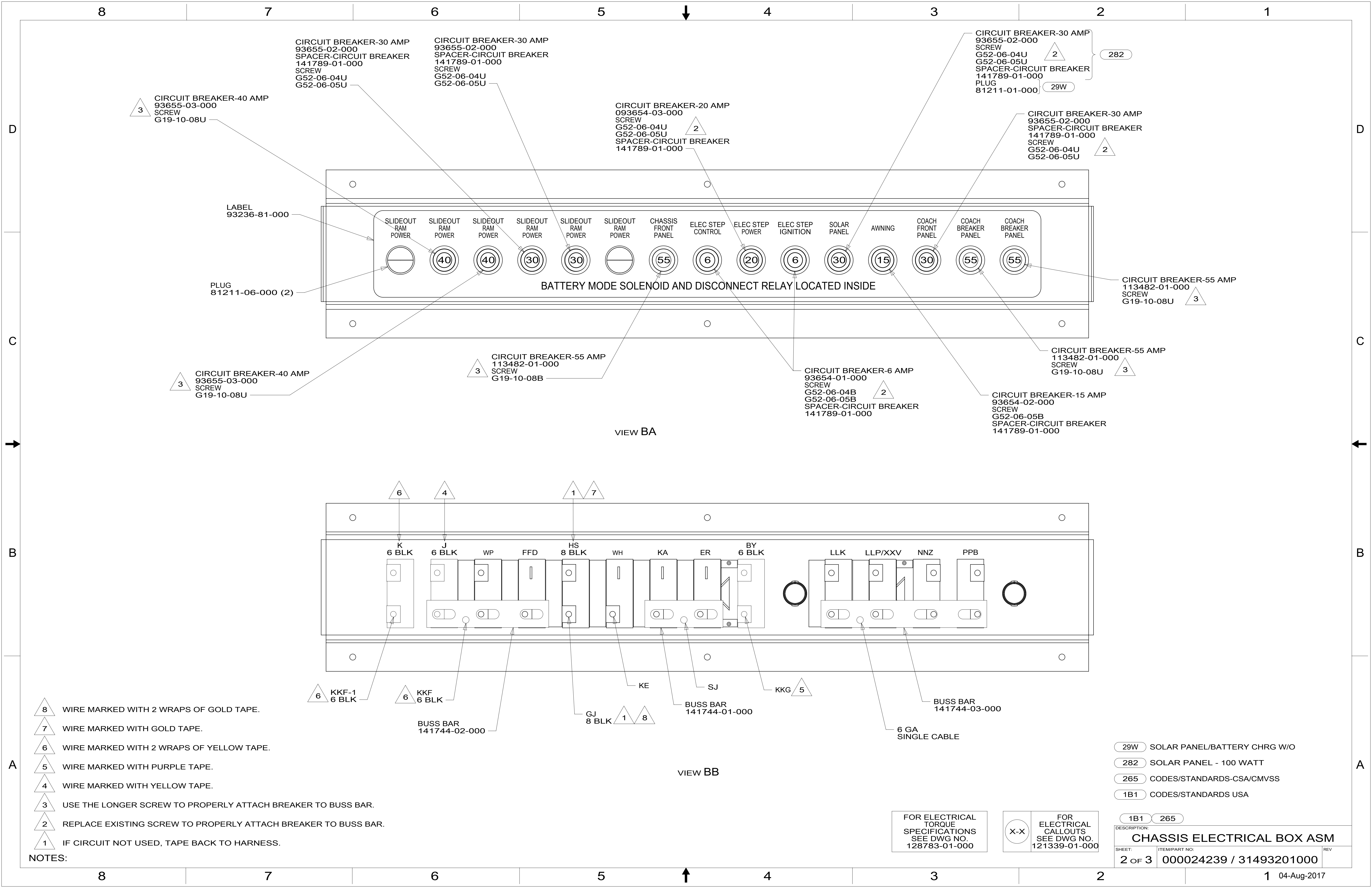
FOR ELECTRICAL TORQUE SPECIFICATIONS SEE DWG NO. 128783-01-000

FOR ELECTRICAL CALLOUTS SEE DWG NO. 121339-01-000

8 7 6 5 4 3 2 1

D  
C  
B  
A

REF: 1 04-Aug-2017



CIRCUIT BREAKER-30 AMP  
93655-02-000  
SPACER-CIRCUIT BREAKER  
141789-01-000  
SCREW  
G52-06-04U  
G52-06-05U

CIRCUIT BREAKER-30 AMP  
93655-02-000  
SPACER-CIRCUIT BREAKER  
141789-01-000  
SCREW  
G52-06-04U  
G52-06-05U

CIRCUIT BREAKER-30 AMP  
93655-02-000  
SCREW  
G52-06-04U  
G52-06-05U  
SPACER-CIRCUIT BREAKER  
141789-01-000  
PLUG  
81211-01-000

CIRCUIT BREAKER-30 AMP  
93655-02-000  
SPACER-CIRCUIT BREAKER  
141789-01-000  
SCREW  
G52-06-04U  
G52-06-05U

CIRCUIT BREAKER-55 AMP  
113482-01-000  
SCREW  
G19-10-08U

CIRCUIT BREAKER-55 AMP  
113482-01-000  
SCREW  
G19-10-08U

CIRCUIT BREAKER-15 AMP  
93654-02-000  
SCREW  
G52-06-05B  
SPACER-CIRCUIT BREAKER  
141789-01-000

CIRCUIT BREAKER-6 AMP  
93654-01-000  
SCREW  
G52-06-04B  
G52-06-05B  
SPACER-CIRCUIT BREAKER  
141789-01-000

CIRCUIT BREAKER-55 AMP  
113482-01-000  
SCREW  
G19-10-08B

CIRCUIT BREAKER-40 AMP  
93655-03-000  
SCREW  
G19-10-08U

CIRCUIT BREAKER-40 AMP  
93655-03-000  
SCREW  
G19-10-08U

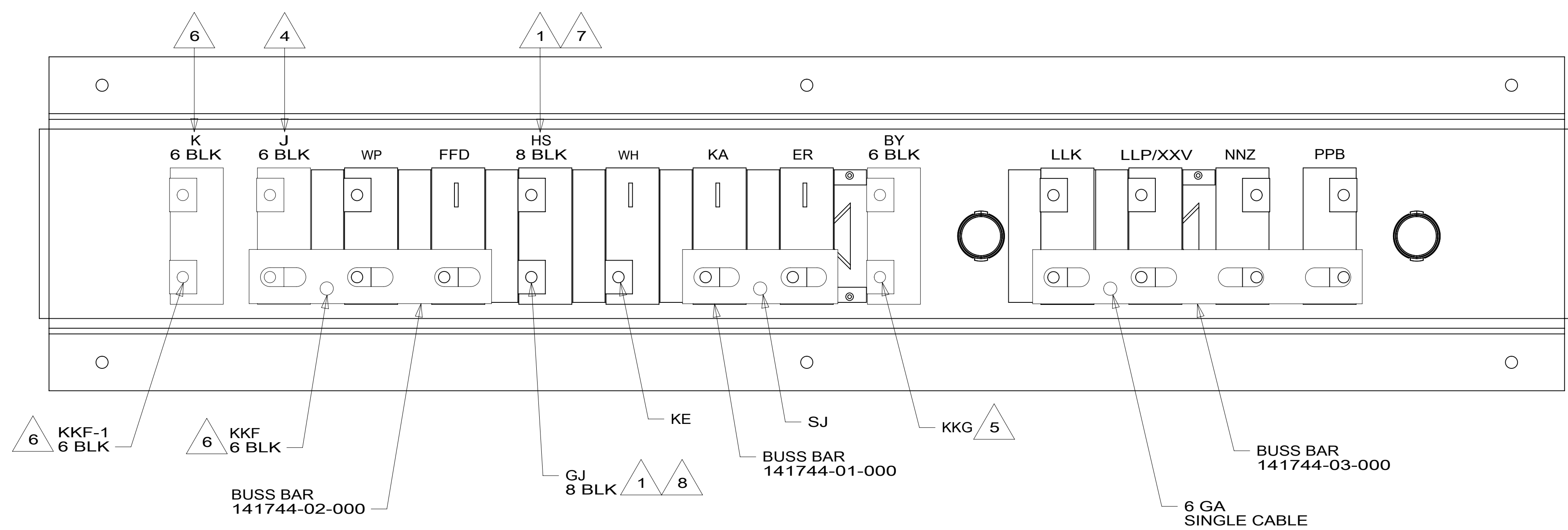
LABEL  
93236-81-000

PLUG  
81211-06-000 (2)

CIRCUIT BREAKER-20 AMP  
093654-03-000  
SCREW  
G52-06-04U  
G52-06-05U  
SPACER-CIRCUIT BREAKER  
141789-01-000

BATTERY MODE SOLENOID AND DISCONNECT RELAY LOCATED INSIDE

VIEW BA



VIEW BB

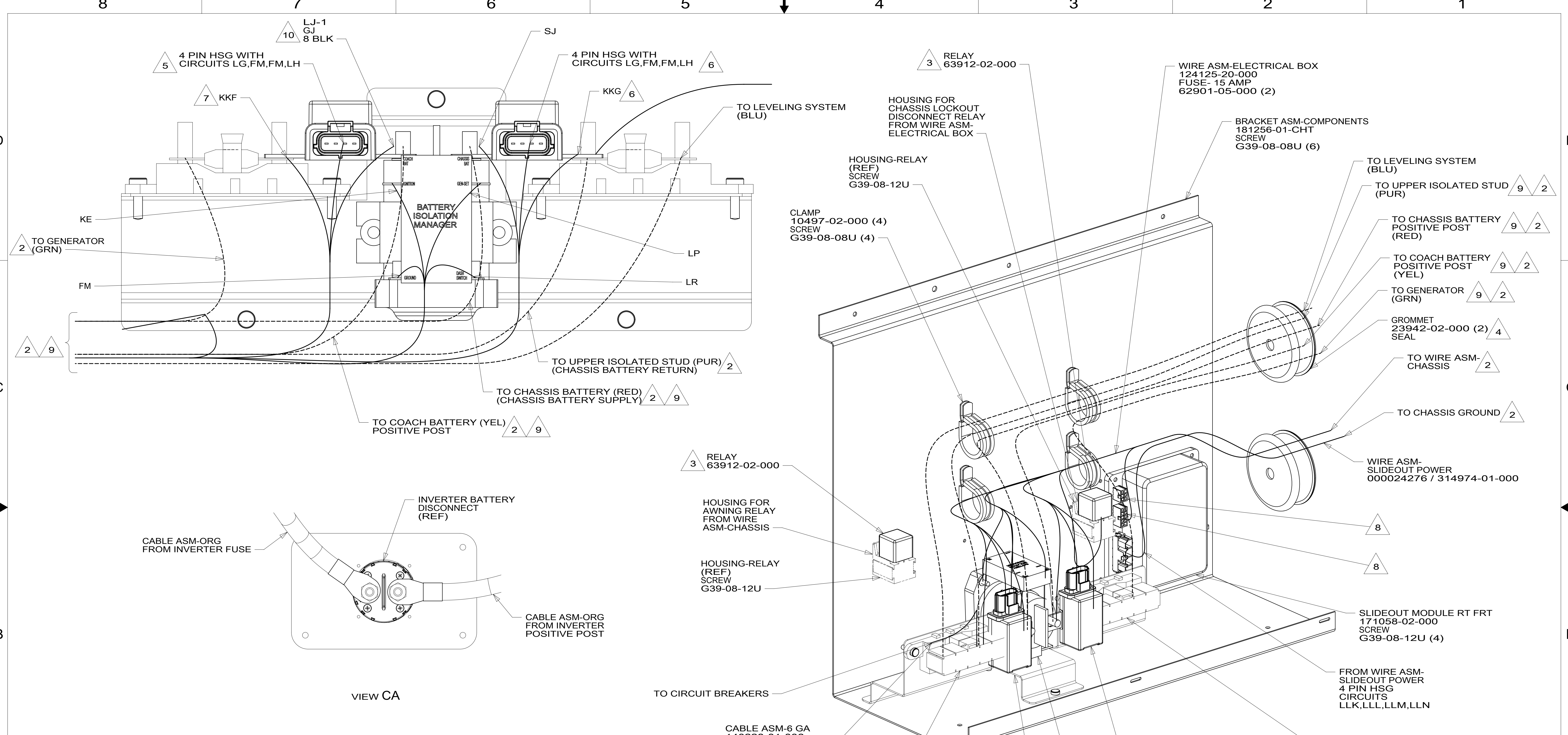
- NOTES:
- 8 WIRE MARKED WITH 2 WRAPS OF GOLD TAPE.
  - 7 WIRE MARKED WITH GOLD TAPE.
  - 6 WIRE MARKED WITH 2 WRAPS OF YELLOW TAPE.
  - 5 WIRE MARKED WITH PURPLE TAPE.
  - 4 WIRE MARKED WITH YELLOW TAPE.
  - 3 USE THE LONGER SCREW TO PROPERLY ATTACH BREAKER TO BUSS BAR.
  - 2 REPLACE EXISTING SCREW TO PROPERLY ATTACH BREAKER TO BUSS BAR.
  - 1 IF CIRCUIT NOT USED, TAPE BACK TO HARNESS.

- 29W SOLAR PANEL/BATTERY CHRNG W/O
- 282 SOLAR PANEL - 100 WATT
- 265 CODES/STANDARDS-CSA/CMVSS
- 1B1 CODES/STANDARDS USA

FOR ELECTRICAL TORQUE SPECIFICATIONS SEE DWG NO. 128783-01-000

FOR ELECTRICAL CALLOUTS SEE DWG NO. 121339-01-000

DESCRIPTION:	1B1 265	
<b>CHASSIS ELECTRICAL BOX ASM</b>		
SHEET:	ITEM/PART NO:	REV
2 OF 3	000024239 / 31493201000	



- 10 WIRE MARKED WITH 2 WRAPS OF GOLD TAPE.
- 9 SEE BATTERY INSTL FOR ADDITIONAL INFORMATION.
- 8 SEE WIRING INSTL-BODY, 12V FOR ADDITIONAL INFORMATION.
- 7 WIRE MARKED WITH 2 WRAPS OF YELLOW TAPE.
- 6 WIRE MARKED WITH PURPLE TAPE.
- 5 WIRE MARKED WITH YELLOW TAPE.
- 4 SEAL OPENING AFTER ALL CABLES ARE ROUTED THROUGH.
- 3 SECURE RELAY HOUSING TO PANEL BEFORE INSTALLING RELAY.
- 2 SEE WIRING INSTL-CHASSIS FOR ADDITIONAL INFORMATION.

NOTES:  
 1. SECURE CONDUIT 41953, TAB AS REQUIRED, OVER ALL WIRES IN CONTACT WITH SHARP EDGES.

FOR ELECTRICAL TORQUE SPECIFICATIONS SEE DWG NO. 128783-01-000

X-X

FOR ELECTRICAL CALLOUTS SEE DWG NO. 121339-01-000

265 CODES/STANDARDS-CSA/CMVSS  
 1B1 CODES/STANDARDS USA

DESCRIPTION:  
**CHASSIS ELECTRICAL BOX ASM**

SHEET: 3 OF 3    ITEM/PART NO.: 000024239 / 31493201000    REV:

D  
C  
B  
A

D  
C  
B  
A