

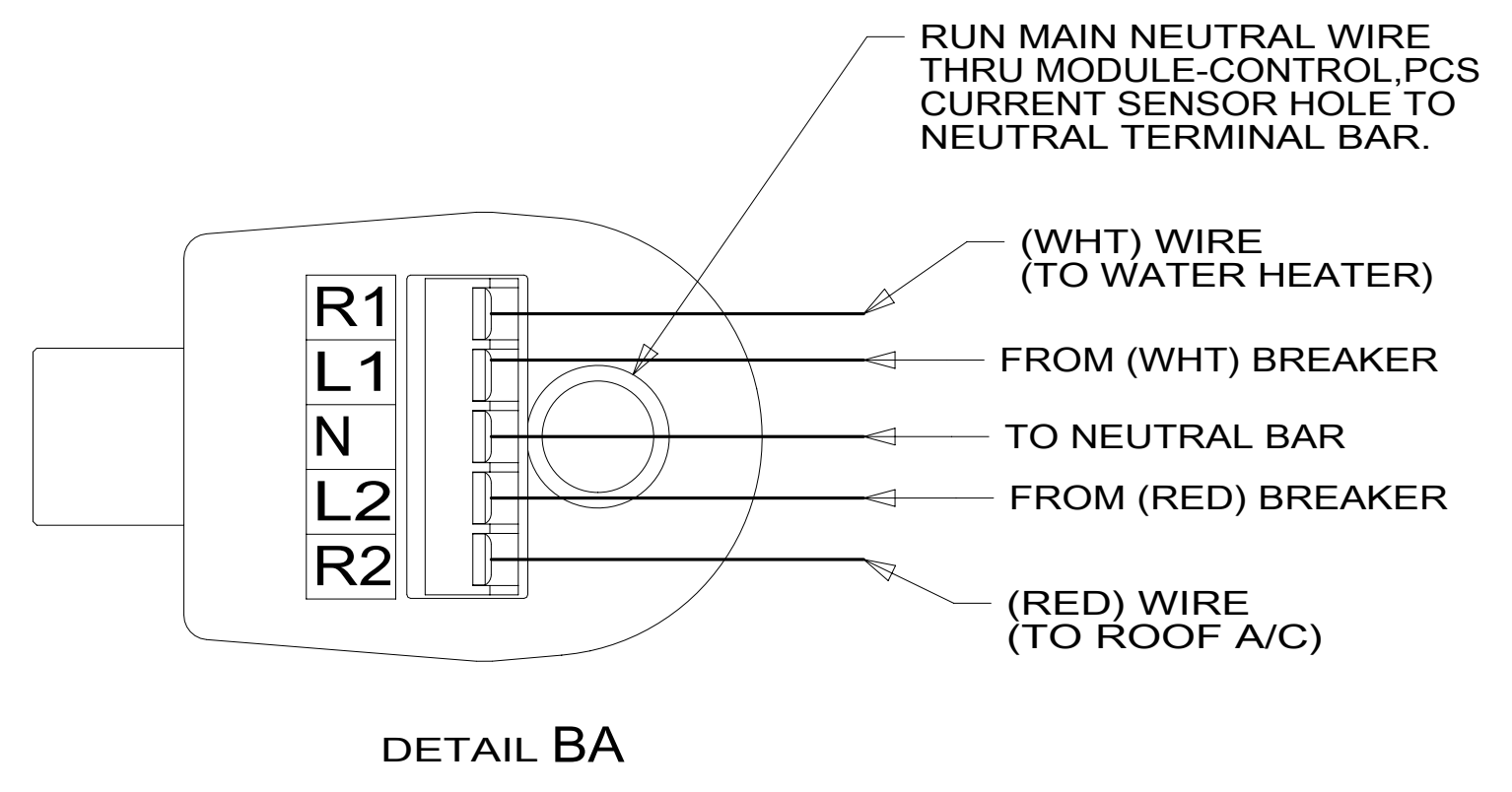
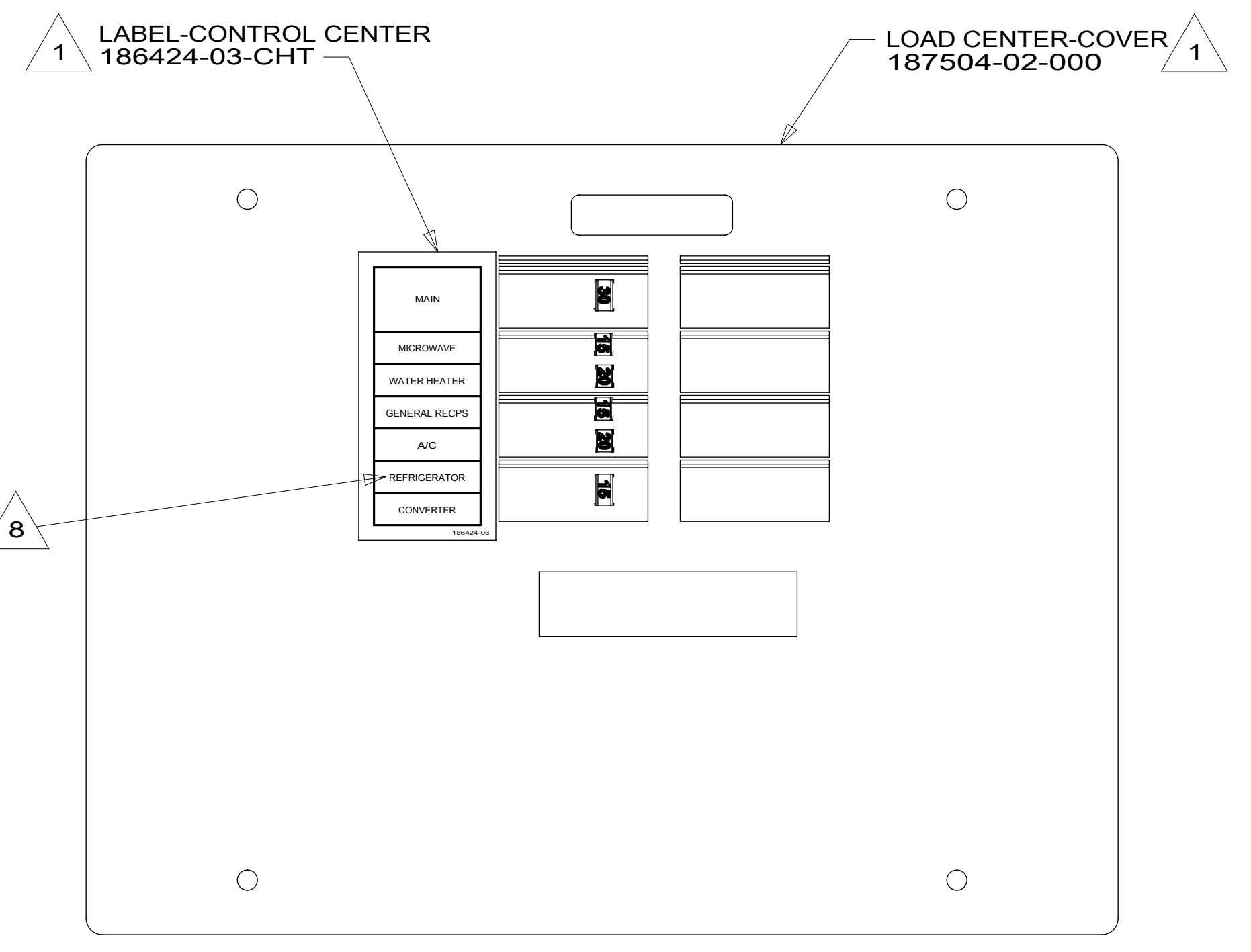
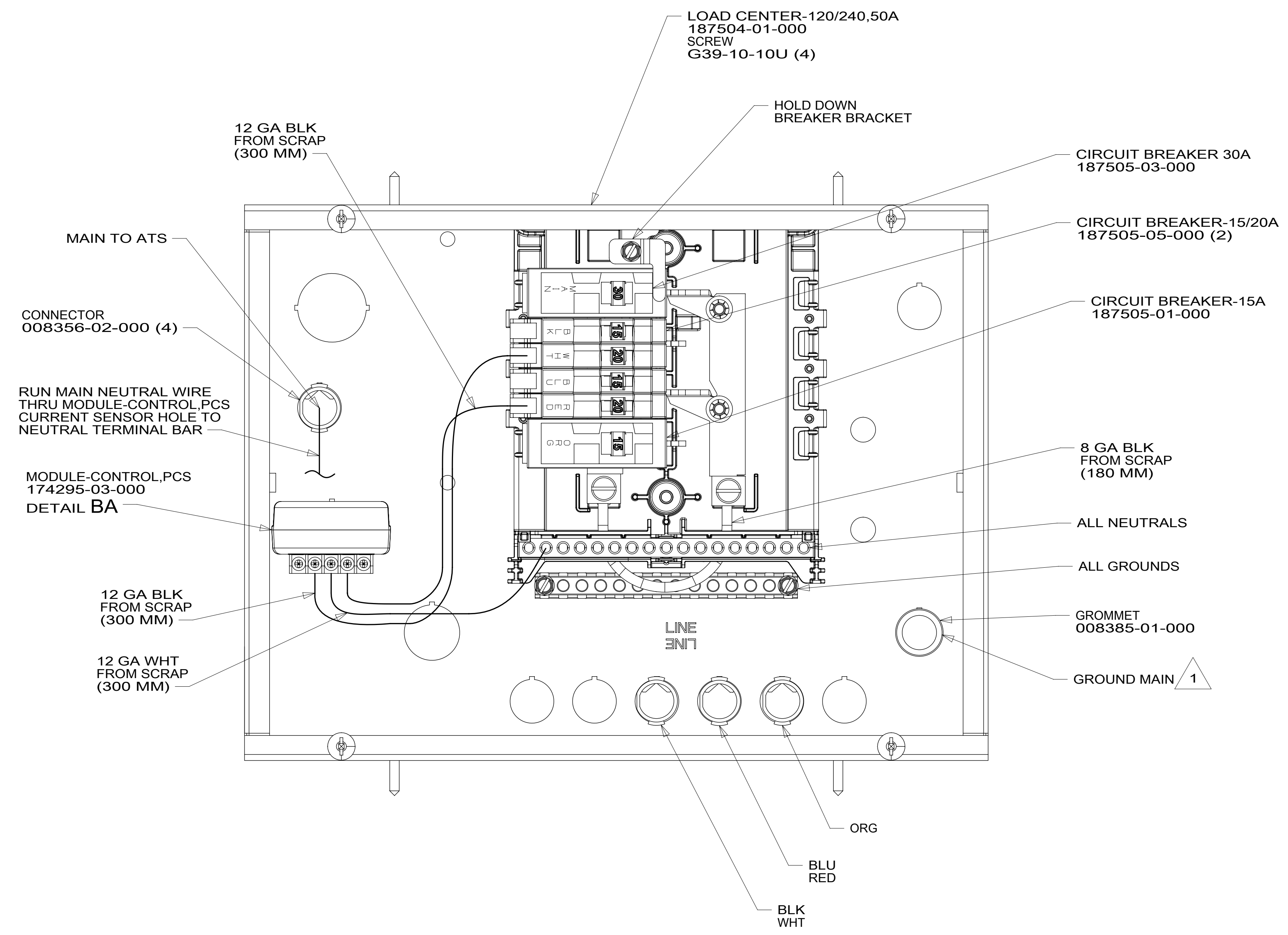
8 7 6 5 4 3 2 1

D

C

B

A



- 8 BLACK OUT 'REFRIGERATOR'.
7. SEE WIRING INSTL-BODY, 110V FOR ADDITIONAL INFORMATION.
6. ALL 110V STRANDED WIRE WITHOUT TERMINALS TO BE STRIPPED 10 MM AND SOLDER DIPPED.
5. REMOVE 400 MM FROM OUTER JACKET ON ALL WIRES ENTERING LOAD CENTER AND TRIM INDIVIDUAL CONDUCTORS AS REQUIRED TO MAKE INTERNAL CONNECTIONS.
4. ALL WIRES TO BE CLAMPED WITHIN 200 MM OF ATS.
3. GROUND WIRES ARE NOT SHOWN FOR CLARITY.
2. ALL GROUNDS TO BE COVERED WITH TUBING 8041-02-000.
- 1 INSTALLED BY ASSEMBLY LINE.
- NOTES:

FOR ELECTRICAL TORQUE SPECIFICATIONS SEE DWG NO. 128783-01-000

FOR ELECTRICAL CALLOUTS SEE DWG NO. 121339-01-000

265 CODES/STANDARDS-CSA/CMVSS

1B1 CODES/STANDARDS USA

1B1 265



DSNR:	ALL DIMENSIONS ARE IN MILLIMETERS	
DFFR:		
UNSPECIFIED TOLERANCES:	MATERIAL:	
WHOLE DIM (X) : 3		
ONE-PLACE (X.X) : 1.5		
TWO-PLACE (X.XX) : 0.50		
ANGLE : 1°		
REFER TO ES0018 FOR FASTENER TIGHTENING GUIDELINES	WEIGHT: (LBS)	FIRST USED:
		17 170C

DESCRIPTION: LOAD CENTER ASM		
SHEET: 1 OF 1	ITEM/PART NO: 000024238 / 31512301000	REV:

8 7 6 5 4 3 2 1

D

C

B

A