

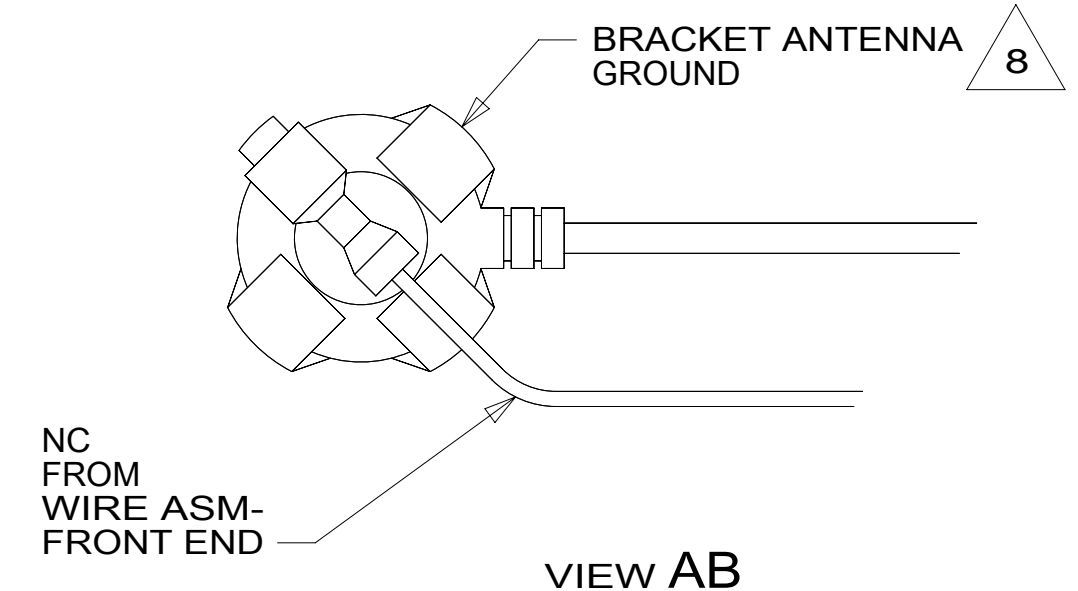
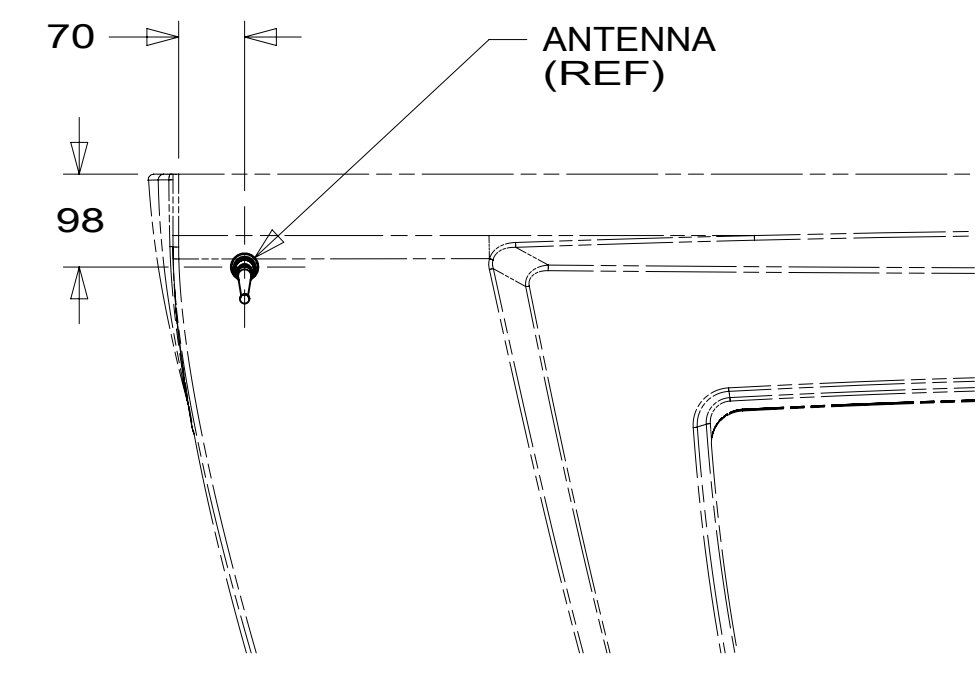
ROUTE CAMERA CABLE UP CABINET

ANTENNA 090944-01-000

EXTENSION-ANTENNA, SAT RADIO 181908-04-000 5

MIRROR-REAR VIEW 188361-01-000 (SEE SHEET 3)

RADIO (CHASSIS SUPPLIED) ADAPTER-ANTENNA 171740-03-000 6



ROUTED THROUGH FLOOR IN THIS AREA

2 CABLE ASM-MONITOR 183822-02-000

5 ANTENNA-SATELLITE RADIO (CHASSIS SUPPLIED) PLATE-SAT RADIO 177256-05-CHT G11-08-08U (4)

3 7

CABLE-ANTENNA 077069-03-000

1 CIRCUITS TR,JJX,FM

ROUTE CAMERA CABLE ABOVE HEADLINER

ROUTE ANTENNA CABLE TO DASH RADIO. USE ADAPTER-ANTENNA TO INTERFACE WITH RADIO

- NOTES:**
- 8 WRAP BRACKET LEGS AROUND ANTENNA BASE.
 - 7 ROUTE CAMERA CABLE UP B-PILLAR.
 - 6 INSTALL ON BACK SIDE OF RADIO.
 - 5 REMOVE ANTENNA FROM CHASSIS CAB ROOF AND RELOCATE TO MAIN ROOF. USE ANTENNA EXTENSION BETWEEN CHASSIS ANTENNA CABLE AND ANTENNA WHEN RELOCATING ANTENNA. SECURE BOTH ENDS OF ANTENNA EXTENSION WITH TAPE.
 - 4 SECURE RECEIVER TO DASH RADIO WIRING USING WIRE TIES.
 - 3 ROUTE ANTENNA CABLES DOWN B-PILLAR.
 - 2 ROUTE REAR MONITOR CAMERA CABLE ALONG FRAME RAIL WITH WIRE ASM-CHASSIS. SEE WIRING INSTL-CHASSIS FOR ADDITIONL INFORMATION.
 - 1 SEE WIRE ASM-CHASSIS FOR ADDITIONAL INFORMATION.

265 CODES/STANDARDS-CSA/CMVSS
1B1 CODES/STANDARDS USA
1B1 265

WINNEBAGO COPYRIGHT 2016 WINNEBAGO INDUSTRIES, INC.	
DSNR:	ALL DIMENSIONS ARE IN MILLIMETERS
DIFFR:	MATERIAL:
UNSPECIFIED TOLERANCES:	WEIGHT: (LBS)
WHOLE DIM (X) : 3	FIRST USED:
ONE-PLACE (X.X) : 1.5	17 600-SE
TWO-PLACE (X.XX) : 0.50	DESCRIPTION:
ANGLE : 1°	RADIO/MONITOR INSTL
REFER TO ES0018 FOR FASTENER TIGHTENING GUIDELINES	SHEET: 1 OF 3
ITEM/PART NO. 000024154 / 31490201000	REF: 1
REV:	14-Mar-2017

FOR ELECTRICAL TORQUE SPECIFICATIONS SEE DWG NO. 128783-01-000

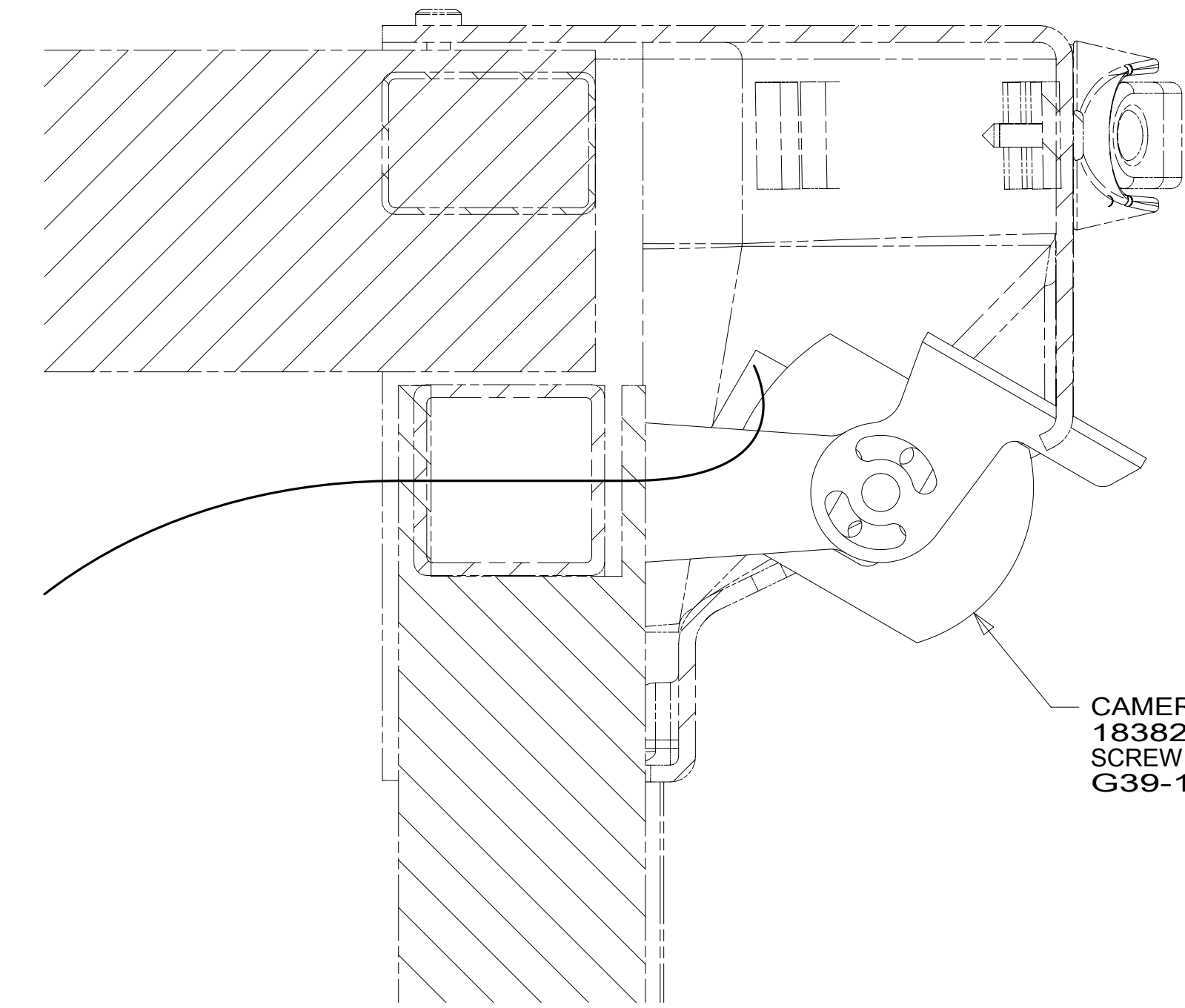
FOR ELECTRICAL CALLOUTS SEE DWG NO. 121339-01-000

8 7 6 5 4 3 2 1

ROUTE CAMERA CABLE THROUGH BACKWALL

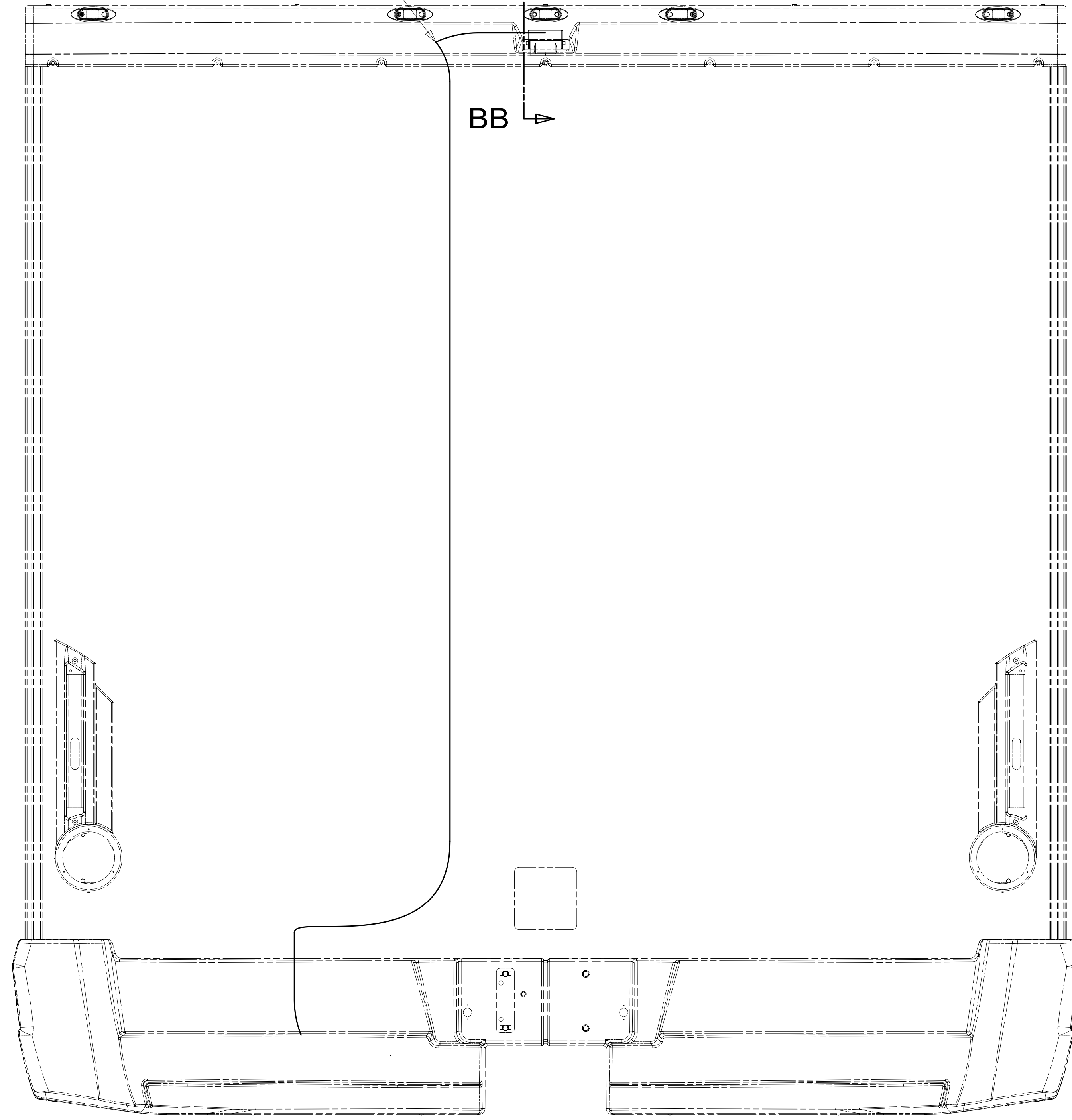
BB

BB



CAMERA-REAR VIEW
183822-01-000
SCREW
G39-10-12U (5)

SECTION BB-BB



VIEW BA

D
C
B
A

D
C
B
A

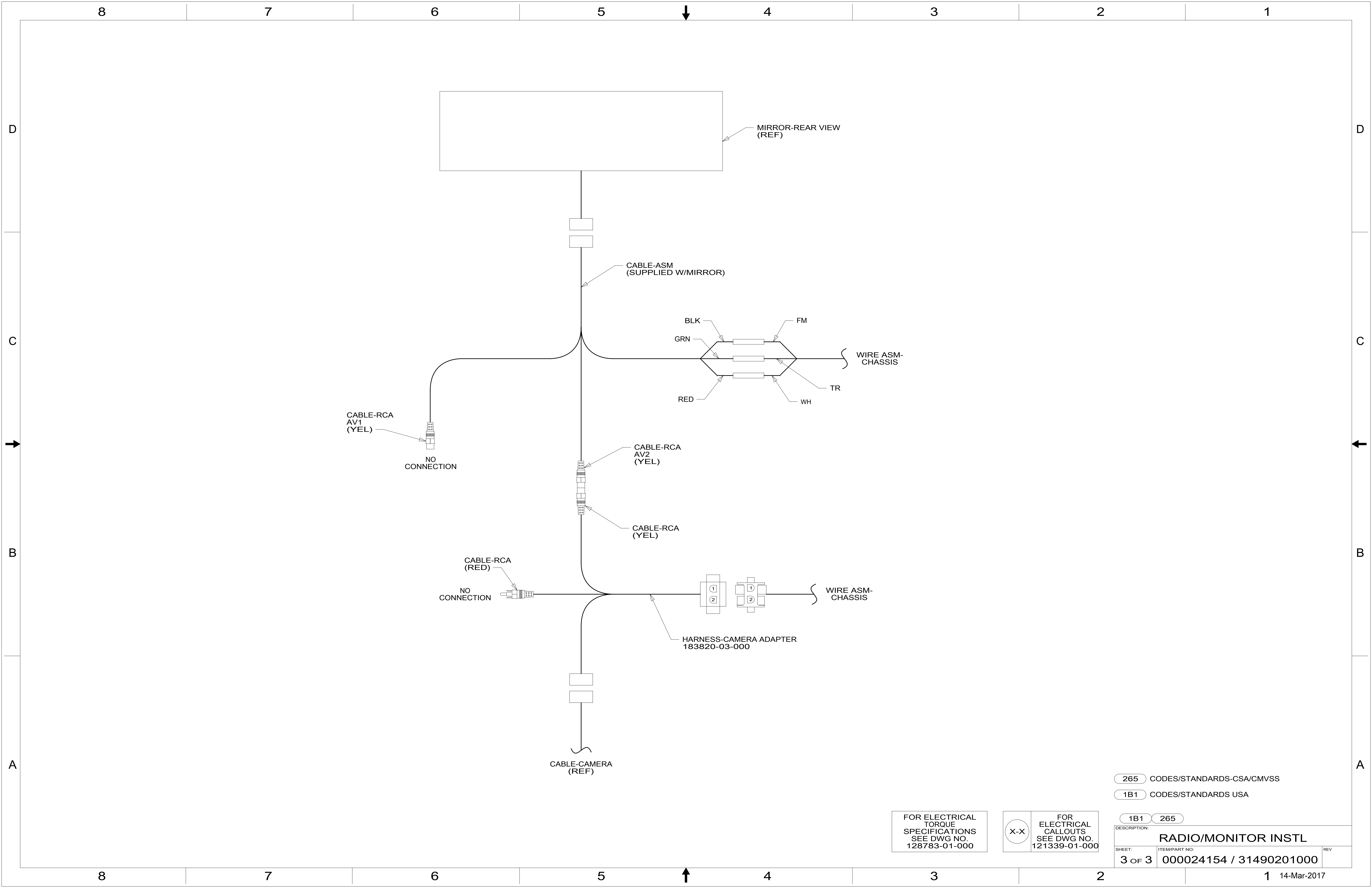
8 7 6 5 4 3 2 1

FOR ELECTRICAL TORQUE SPECIFICATIONS SEE DWG NO. 128783-01-000

FOR ELECTRICAL CALLOUTS SEE DWG NO. 121339-01-000

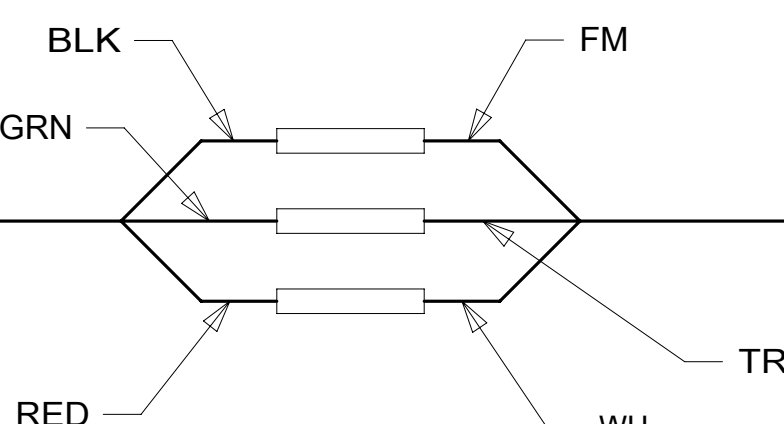
- 265 CODES/STANDARDS-CSA/CMVSS
- 1B1 CODES/STANDARDS USA

DESCRIPTION:		1B1 265
RADIO/MONITOR INSTL		
SHEET:	ITEM/PART NO.:	REV
2 OF 3	000024154 / 31490201000	

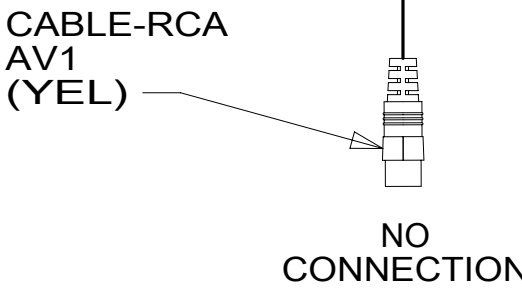


MIRROR-REAR VIEW (REF)

CABLE-ASM (SUPPLIED W/MIRROR)



WIRE ASM-CHASSIS

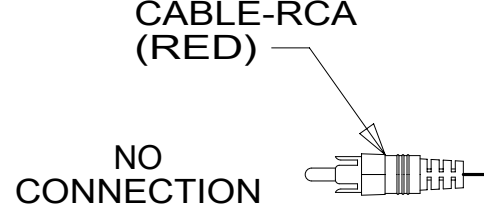


CABLE-RCA AV1 (YEL)

NO CONNECTION

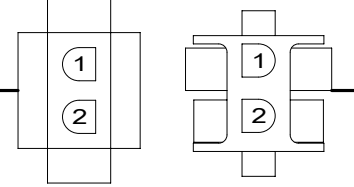
CABLE-RCA AV2 (YEL)

CABLE-RCA (YEL)



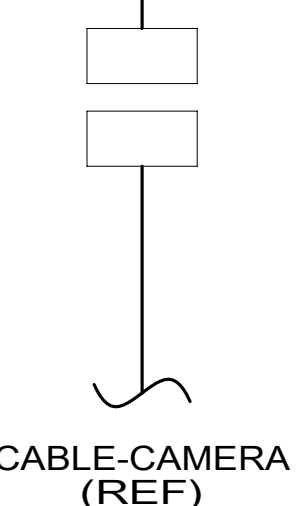
CABLE-RCA (RED)

NO CONNECTION



WIRE ASM-CHASSIS

HARNESS-CAMERA ADAPTER 183820-03-000



CABLE-CAMERA (REF)

265 CODES/STANDARDS-CSA/CMVSS

1B1 CODES/STANDARDS USA

1B1 265

FOR ELECTRICAL TORQUE SPECIFICATIONS SEE DWG NO. 128783-01-000

FOR ELECTRICAL CALLOUTS SEE DWG NO. 121339-01-000

DESCRIPTION: RADIO/MONITOR INSTL		
SHEET: 3 OF 3	ITEM/PART NO: 000024154 / 31490201000	REV