

8 7 6 5 4 3 2 1

D

D

C

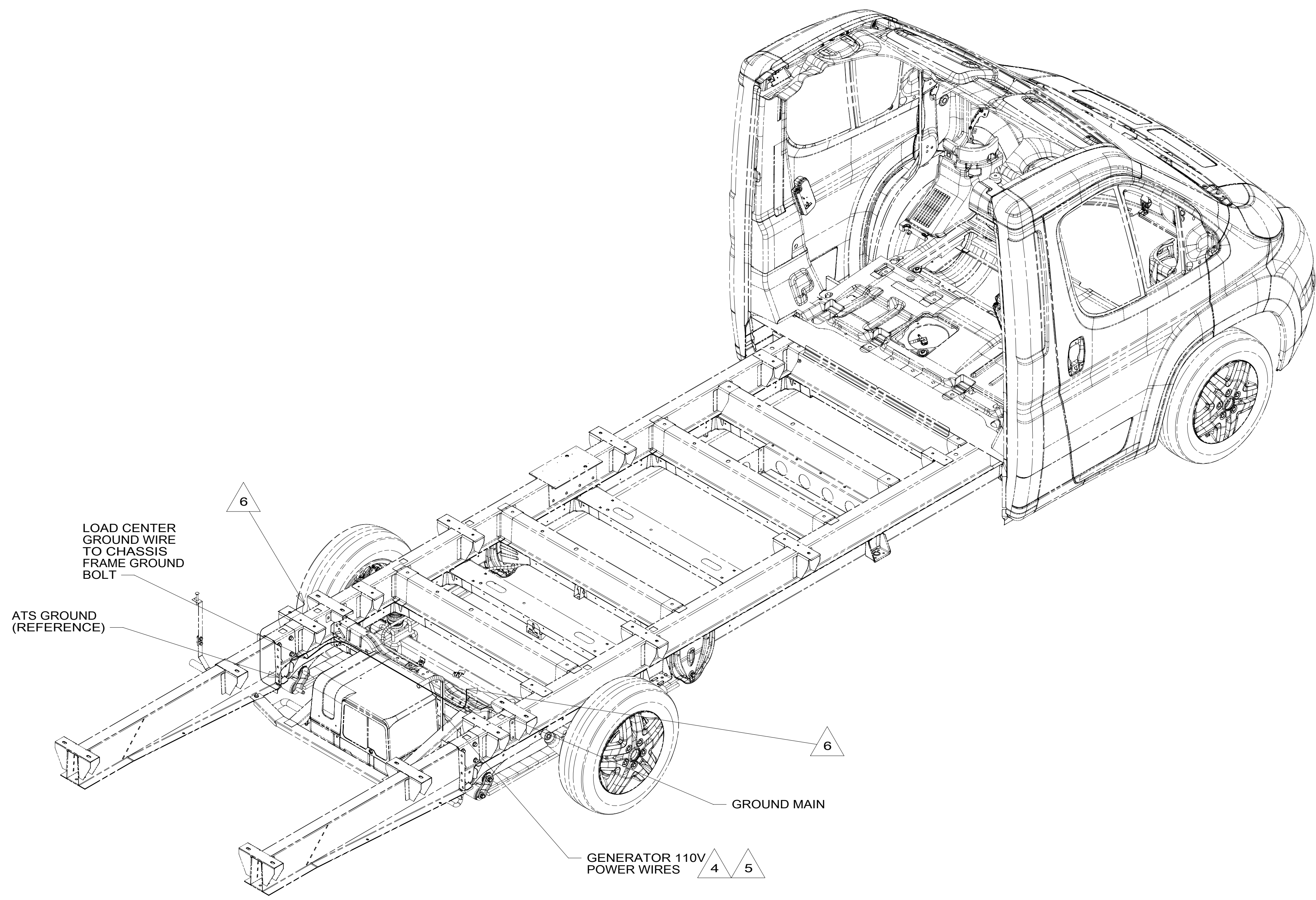
C

B

B

A

A



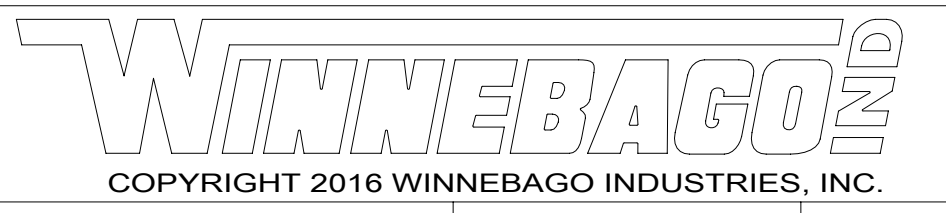
- △ 6 WIRE PASSES THROUGH FLOOR IN THIS AREA.
 - △ 5 ROUTE WIRES THROUGH FLOOR TO 4X4 BOX UNDER BED CABINET.
 - △ 4 SEE GENERATOR INSTL FOR ADDITIONAL INFORMATION.
3. ALL GROUND WIRE TO BE COVERED WITH TUBING 8041-02-000.
 2. ALL 110V WIRE TO BE CLAMPED WITH CLAMP 10497-05-000 WITHIN 200MM OF OUTLET BOXES, USE SCREW G67-10-12U.
 1. AT MINIMUM ALL WIRES TO BE SUPPORTED AND SECURED PER CODE REQUIREMENTS. USE CLAMP 10495 OR 10497 OR WIRE TIE 8343 OR 108046 AND SCREW G67-XX-XXX OR G56-XX-XXX AS APPROPRIATE FOR INSTALLATION.

NOTES:

FOR ELECTRICAL TORQUE SPECIFICATIONS SEE DWG NO. 128783-01-000

FOR ELECTRICAL CALLOUTS SEE DWG NO. 121339-01-000

- 265 CODES/STANDARDS-CSA/CMVSS
- 1B1 CODES/STANDARDS USA
- 1B1 265

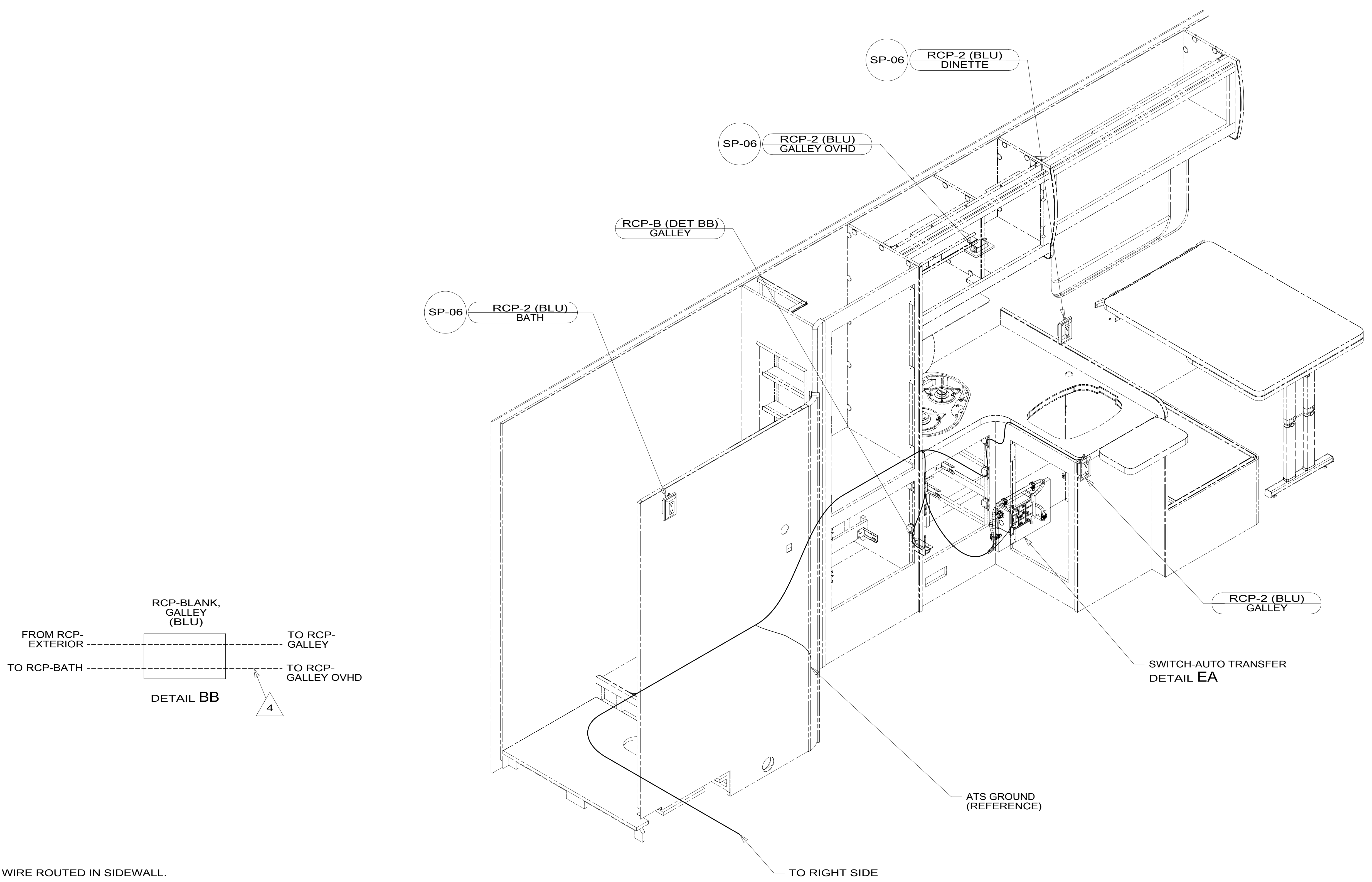


DSNR:		ALL DIMENSIONS ARE IN MILLIMETERS	
DFFR:		MATERIAL:	
UNSPECIFIED TOLERANCES:			
WHOLE DIM (X)	: 3		
ONE-PLACE (X.X)	: 1.5		
TWO-PLACE (X.XX)	: 0.50		
ANGLE	: 1°		
REFER TO ES0018 FOR FASTENER TIGHTENING GUIDELINES	WEIGHT: (LBS)	FIRST USED:	
			17 623L

WIRING INSTL-BODY, 110V

SHEET:	ITEM/PART NO.:	REF:	REV:
1 OF 6	000024153 / 31490101000		

8 7 6 5 4 3 2 1



- 4 WIRE ROUTED IN SIDEWALL.
3. ALL GROUND WIRE TO BE COVERED WITH TUBING 8041-02-000.
 2. ALL 110V WIRE TO BE CLAMPED WITH CLAMP 10497-05-000 WITHIN 200MM OF OUTLET BOXES, USE SCREW G67-10-12U.
 1. AT MINIMUM ALL WIRES TO BE SUPPORTED AND SECURED PER CODE REQUIREMENTS. USE CLAMP 10495 OR 10497 OR WIRE TIE 8343 OR 108046 AND SCREW G67-XX-XXX OR G56-XX-XXX AS APPROPRIATE FOR INSTALLATION.

NOTES:

265 CODES/STANDARDS-CSA/CMVSS
1B1 CODES/STANDARDS USA

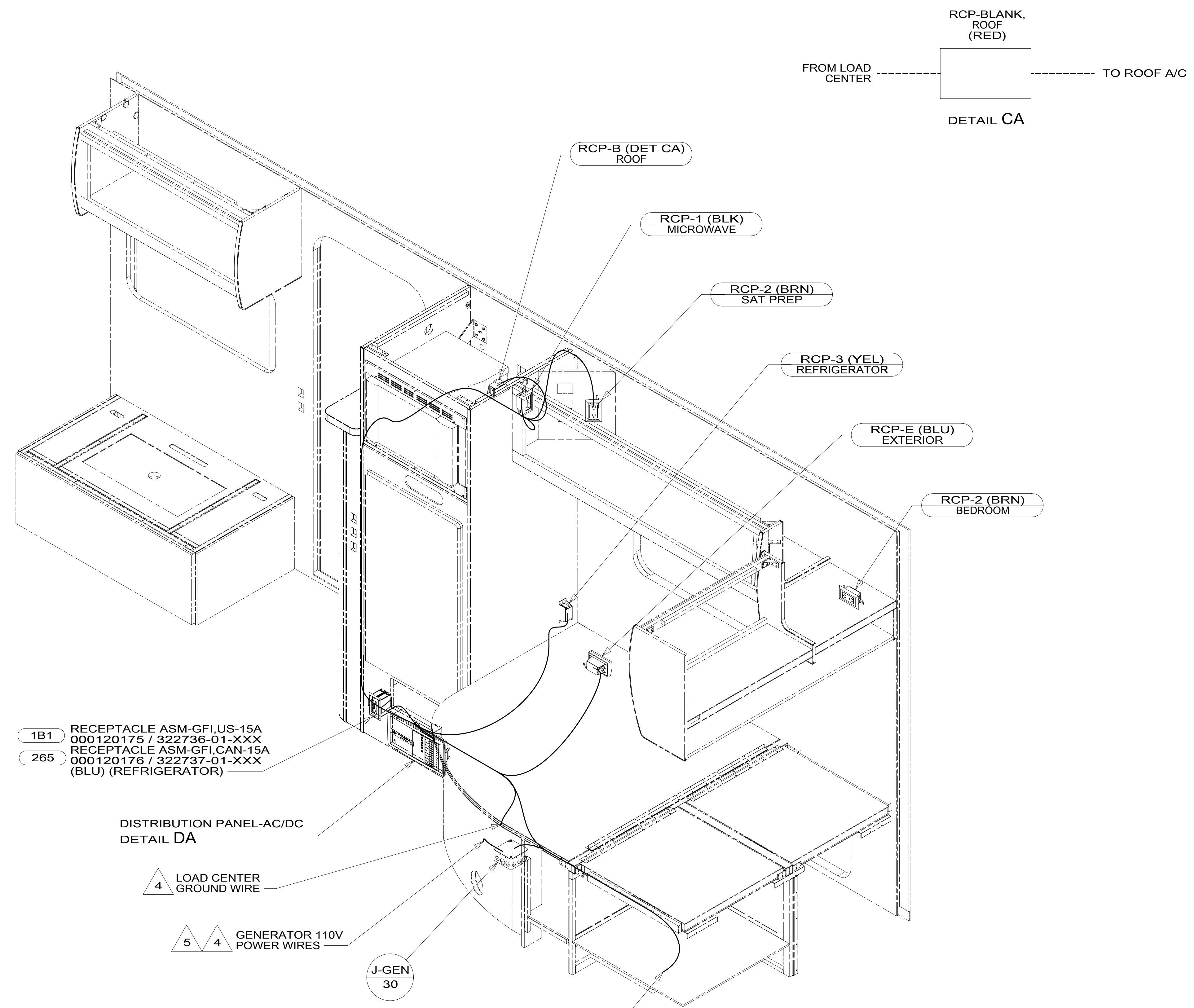
FOR ELECTRICAL TORQUE SPECIFICATIONS SEE DWG NO. 128783-01-000

X-X FOR ELECTRICAL CALLOUTS SEE DWG NO. 121339-01-000

DESCRIPTION:	
WIRING INSTL-BODY, 110V	
SHEET:	ITEM/PART NO.:
2 OF 6	000024153 / 31490101000
REV	

8 7 6 5 4 3 2 1

D
C
B
A



- 5 SEE GENERATOR INSTL FOR ADDITIONAL INFORMATION.
- 4 WIRES ROUTED THROUGH FLOOR.
3. ALL GROUND WIRE TO BE COVERED WITH TUBING 8041-02-000.
2. ALL 110V WIRE TO BE CLAMPED WITH CLAMP 10497-05-000 WITHIN 200MM OF OUTLET BOXES, USE SCREW G67-10-12U.
1. AT MINIMUM ALL WIRES TO BE SUPPORTED AND SECURED PER CODE REQUIREMENTS. USE CLAMP 10495 OR 10497 OR WIRE TIE 8343 OR 108046 AND SCREW G67-XX-XXX OR G56-XX-XXX AS APPROPRIATE FOR INSTALLATION.

NOTES:

FOR ELECTRICAL TORQUE SPECIFICATIONS SEE DWG NO. 128783-01-000

X-X FOR ELECTRICAL CALLOUTS SEE DWG NO. 121339-01-000

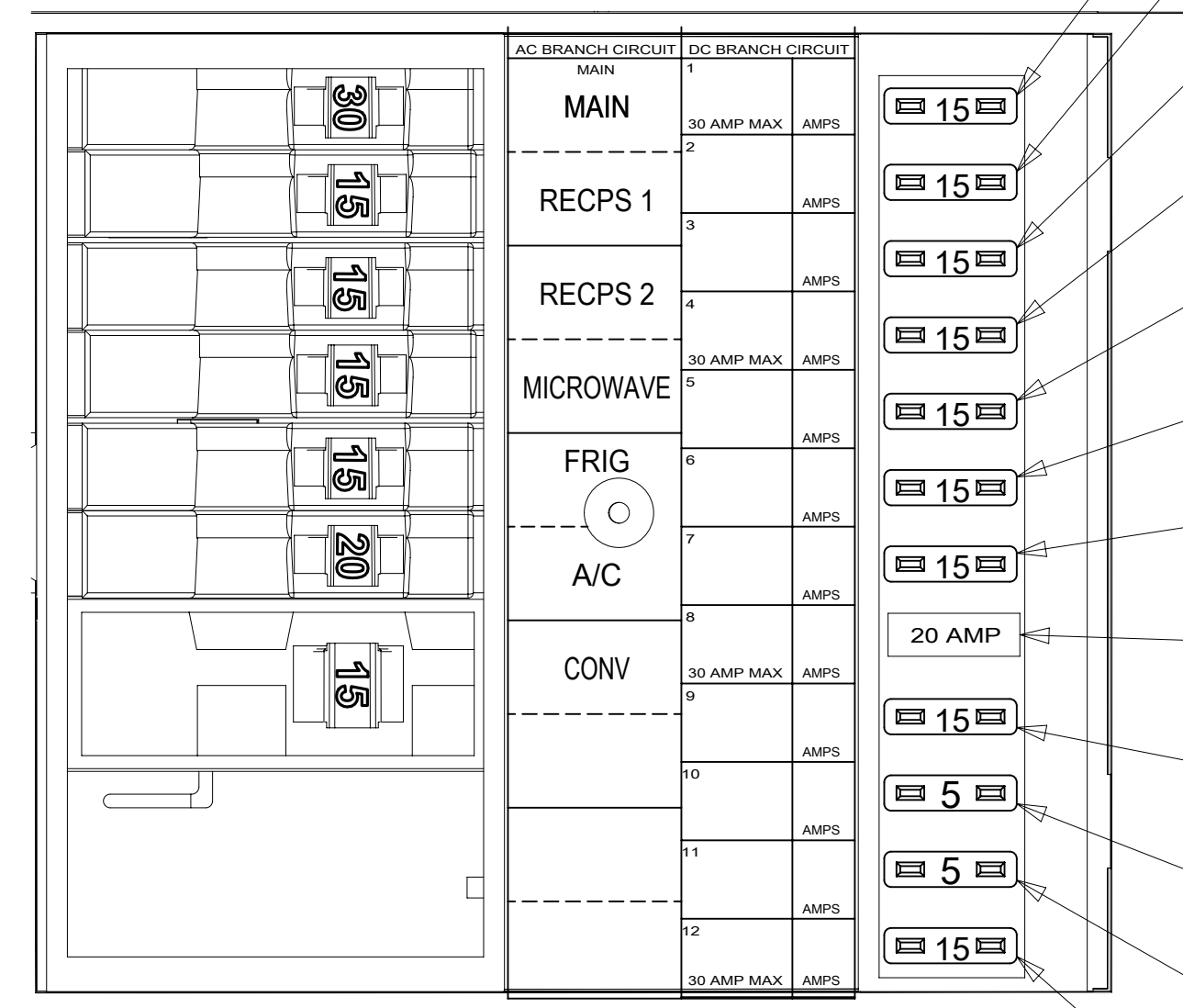
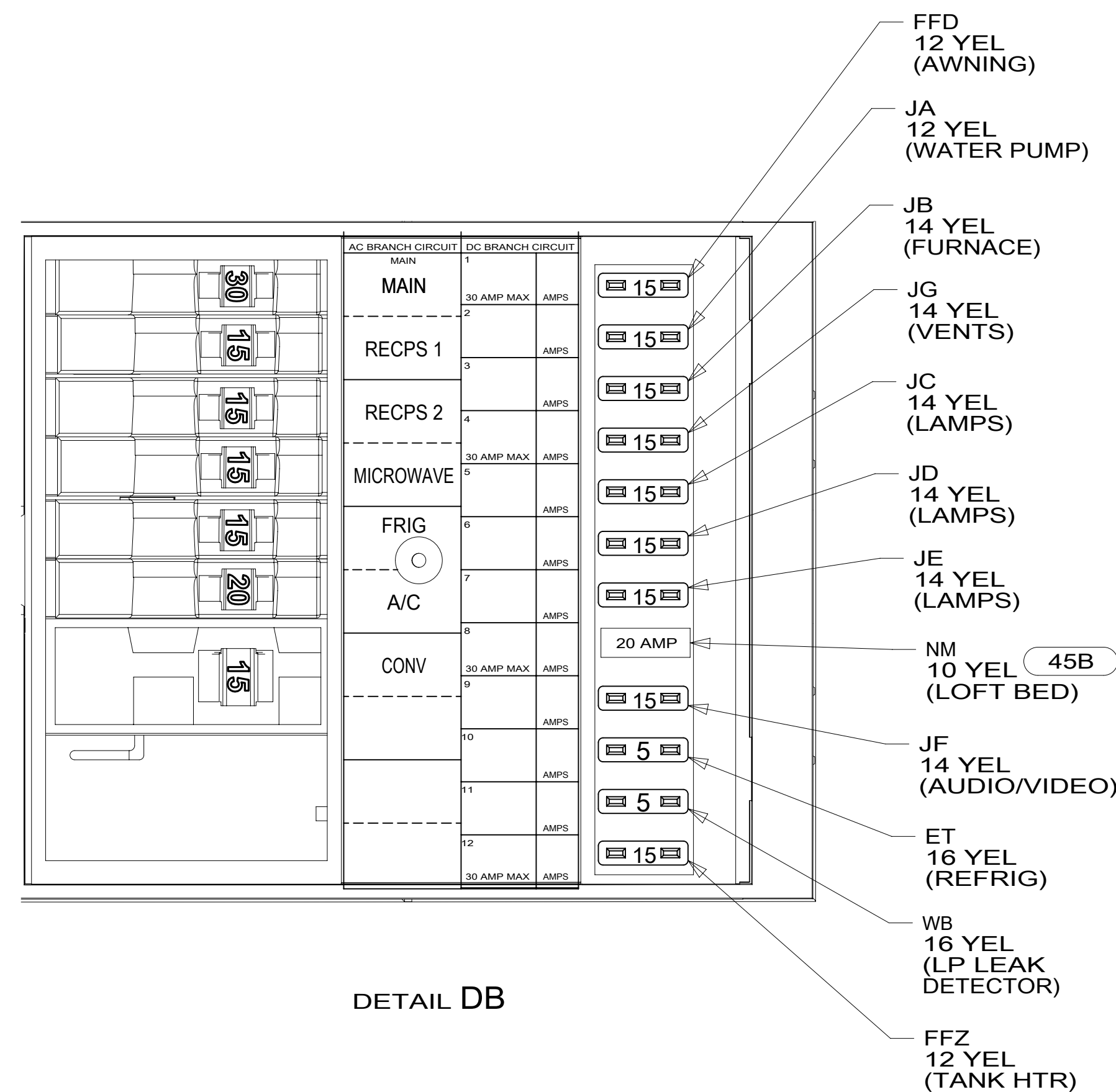
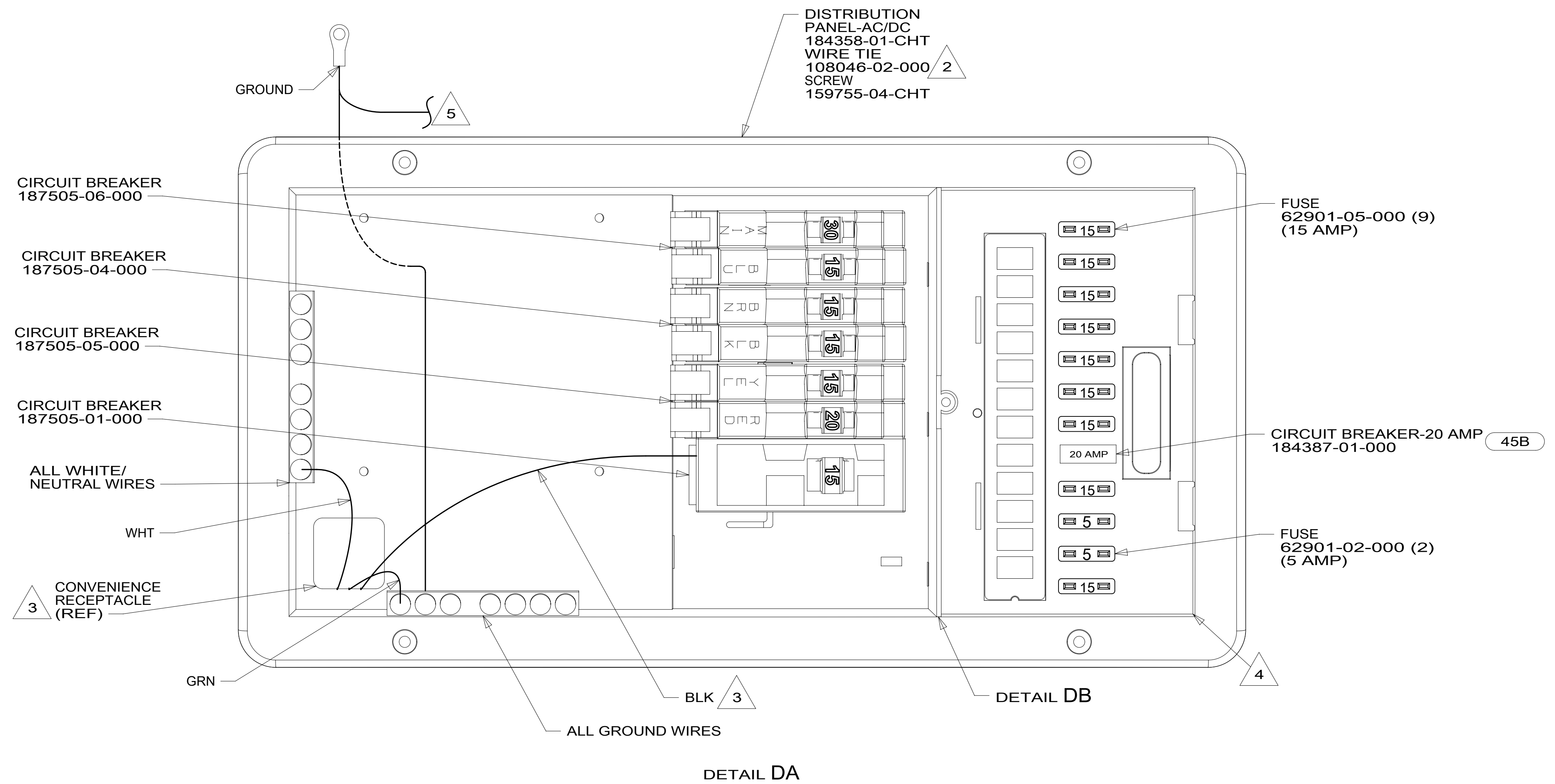
265 CODES/STANDARDS-CSA/CMVSS

1B1 CODES/STANDARDS USA

DESCRIPTION:	
1B1 265	
WIRING INSTL-BODY, 110V	
SHEET:	ITEM/PART NO. REV
3 OF 6	000024153 / 31490101000

8 7 6 5 4 3 2 1 31-May-2017

RED	1B1	136135-07-042
	265	136136-07-042
YEL	1B1	136131-05-014
	265	136134-05-014
BLK	1B1	136131-06-045
	265	136134-06-045
BRN	1B1	136131-03-045
	265	136134-03-045
BLU	1B1	136131-02-136
	265	136134-02-136
GENERATOR EXTENSION	1B1	136137-01-065
	265	136138-01-065
MAIN	1B1	136137-01-080
	265	136138-01-080
ATS GROUND		136145-01-040
GROUND MAIN		136145-06-025



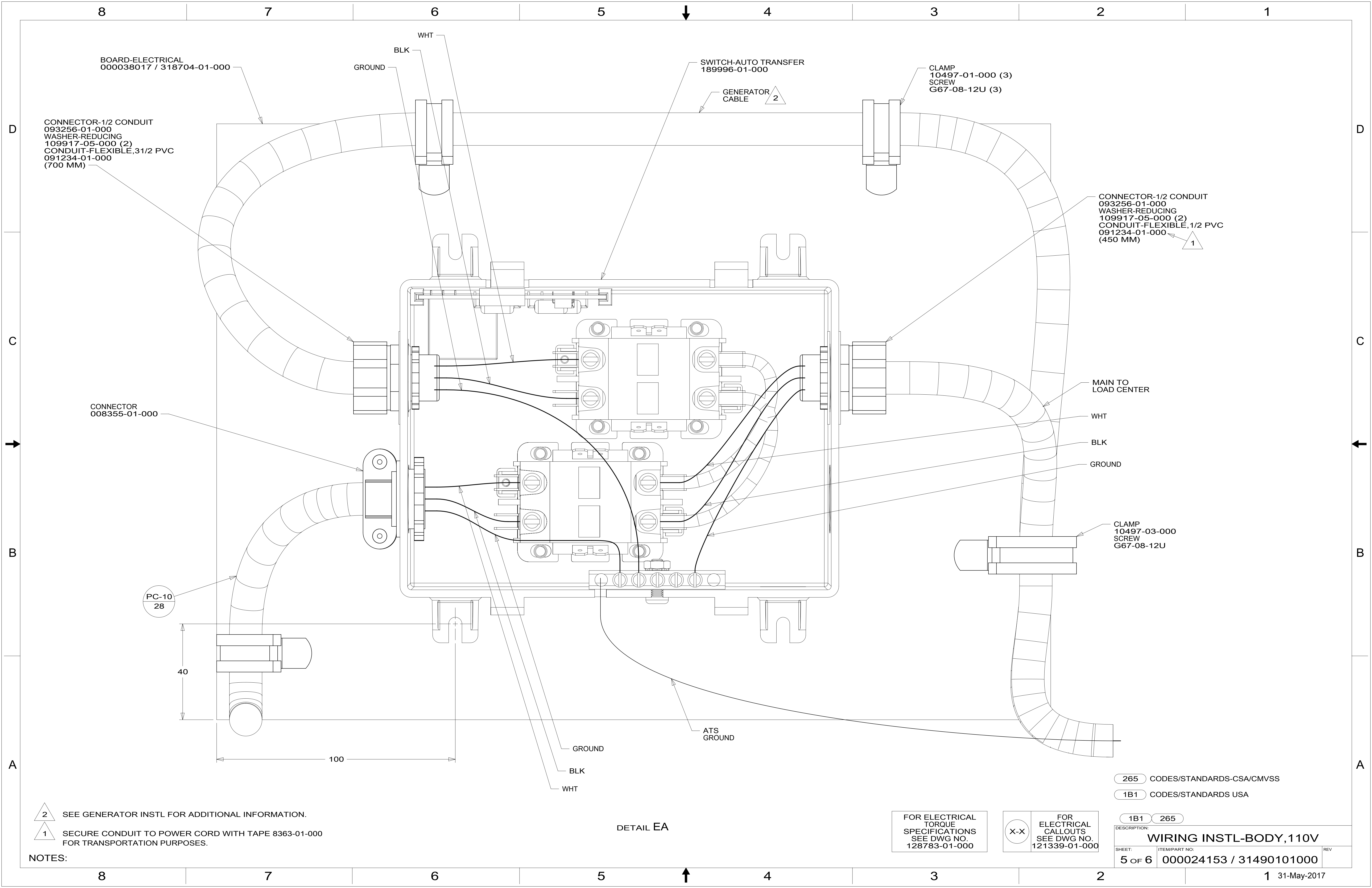
- 5 CONNECT ONE GROUND WIRE TO GROUND BAR INSIDE DISTRIBUTION PANEL. CONNECT ONE GROUND WIRE TO DC GROUND BAR ON BACK SIDE OF DISTRIBUTION PANEL.
- 4 SEE WIRING INSTL-BODY, 12V FOR ADDITIONAL INFORMATION.
- 3 CONNECT BLACK WIRE FROM CONVENIENCE RECEPTACLE TO DEDICATED CIRCUIT BREAKER.
- 2 ATTACH TO UNUSED SCREW HOLE ON BACK SIDE OF PANEL TO SECURE WIRES. USE TO SECURE WIRES TO BACKSIDE OF LOAD CENTER.
1. ALL GROUND WIRES TO BE COVERED WITH TUBING 8041-02-000.

- 45B LOFT BED
- 265 CODES/STANDARDS-CSA/CMVSS
- 1B1 CODES/STANDARDS USA

FOR ELECTRICAL TORQUE SPECIFICATIONS SEE DWG NO. 128783-01-000

FOR ELECTRICAL CALLOUTS SEE DWG NO. 121339-01-000

DESCRIPTION:	
1B1 265	
WIRING INSTL-BODY, 110V	
SHEET:	ITEM/PART NO:
4 OF 6	000024153 / 31490101000
REV	



CONNECTOR-1/2 CONDUIT
093256-01-000
WASHER-REDUCING
109917-05-000 (2)
CONDUIT-FLEXIBLE, 3/2 PVC
091234-01-000
(700 MM)

BOARD-ELECTRICAL
000038017 / 318704-01-000

SWITCH-AUTO TRANSFER
189996-01-000

CLAMP
10497-01-000 (3)
SCREW
G67-08-12U (3)

CONNECTOR-1/2 CONDUIT
093256-01-000
WASHER-REDUCING
109917-05-000 (2)
CONDUIT-FLEXIBLE, 1/2 PVC
091234-01-000
(450 MM)

CONNECTOR
008355-01-000

MAIN TO
LOAD CENTER

CLAMP
10497-03-000
SCREW
G67-08-12U

PC-10
28

40

100

DETAIL EA

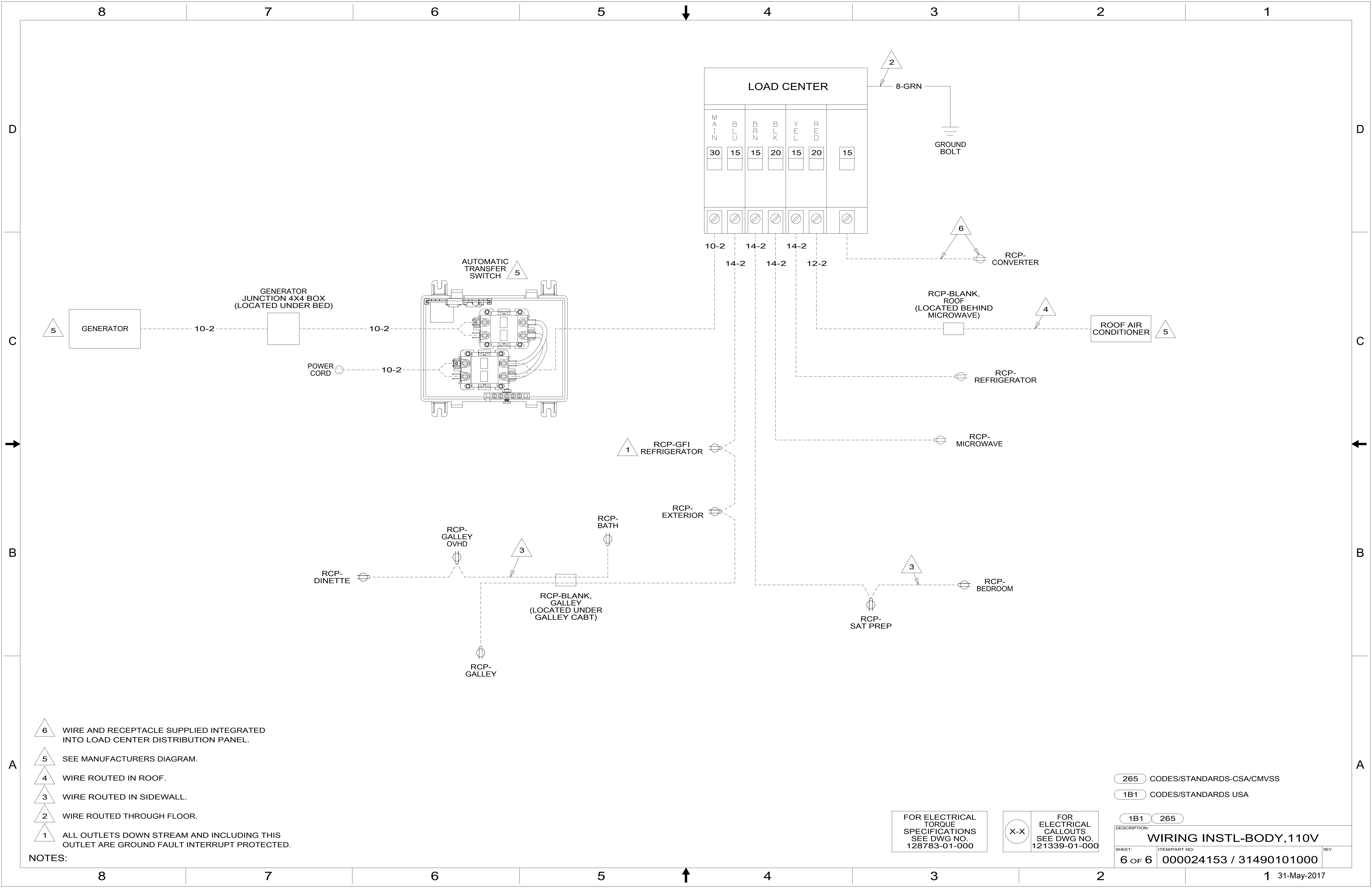
FOR ELECTRICAL
TORQUE
SPECIFICATIONS
SEE DWG NO.
128783-01-000

FOR
ELECTRICAL
CALLOUTS
SEE DWG NO.
121339-01-000

265 CODES/STANDARDS-CSA/CMVSS
1B1 CODES/STANDARDS USA

DESCRIPTION: WIRING INSTL-BODY, 110V		
SHEET: 5 OF 6	ITEM/PART NO: 000024153 / 31490101000	REV

NOTES:
 2 SEE GENERATOR INSTL FOR ADDITIONAL INFORMATION.
 1 SECURE CONDUIT TO POWER CORD WITH TAPE 8363-01-000 FOR TRANSPORTATION PURPOSES.



- NOTES:
- 6 WIRE AND RECEPTACLE SUPPLIED INTEGRATED INTO LOAD CENTER DISTRIBUTION PANEL.
 - 5 SEE MANUFACTURERS DIAGRAM.
 - 4 WIRE ROUTED IN ROOF.
 - 3 WIRE ROUTED IN SIDEWALL.
 - 2 WIRE ROUTED THROUGH FLOOR.
 - 1 ALL OUTLETS DOWN STREAM AND INCLUDING THIS OUTLET ARE GROUND FAULT INTERRUPT PROTECTED.

FOR ELECTRICAL TORQUE SPECIFICATIONS SEE DWG NO. 128783-01-000

FOR ELECTRICAL CALLOUTS SEE DWG NO. 121339-01-000

265 CODES/STANDARDS-CSA/CMVSS
 1B1 CODES/STANDARDS USA

DESCRIPTION:		1B1 265	
WIRING INSTL-BODY, 110V			
SHEET:	ITEM/PART NO.:	REV	
6 OF 6	000024153 / 31490101000		