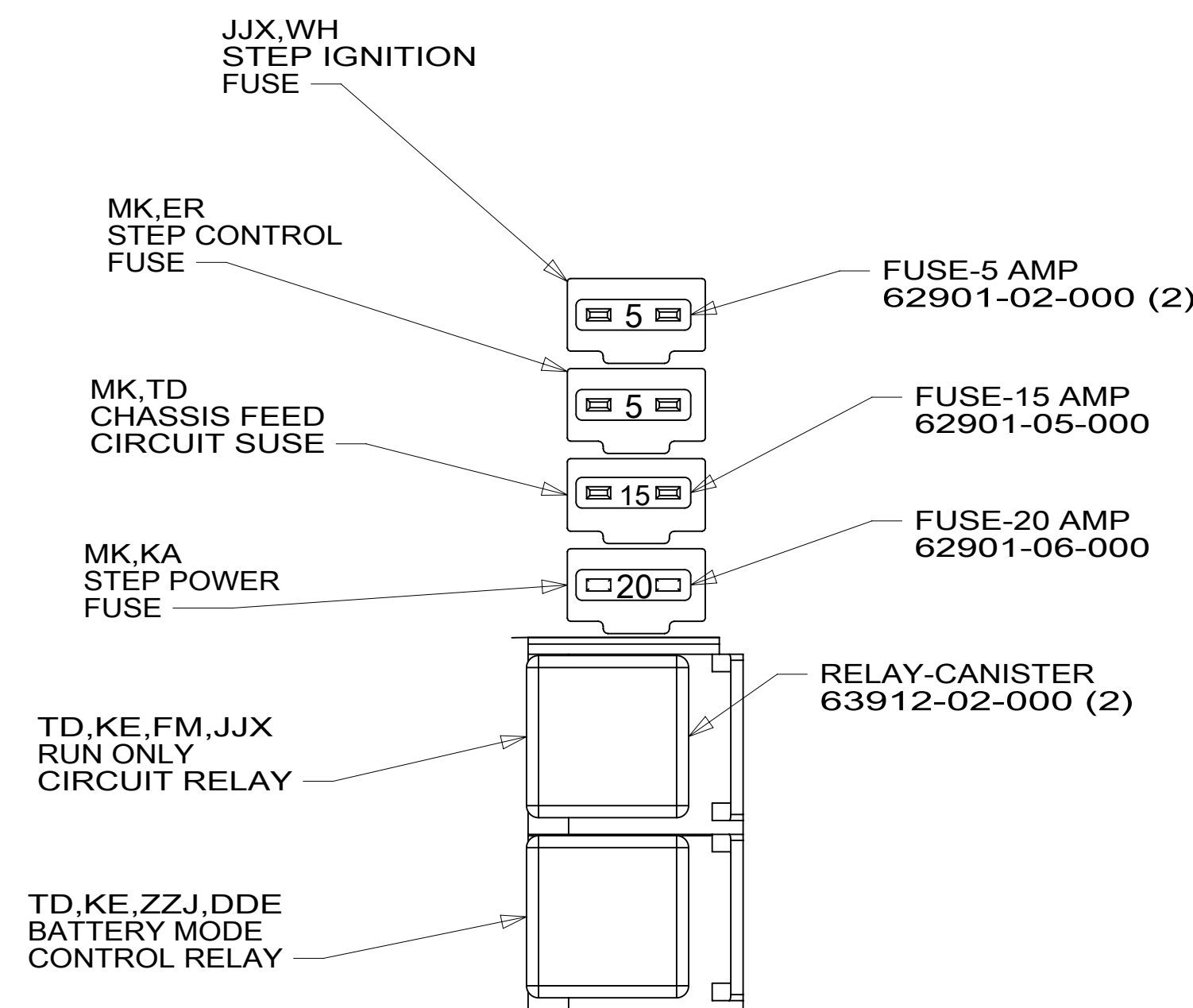
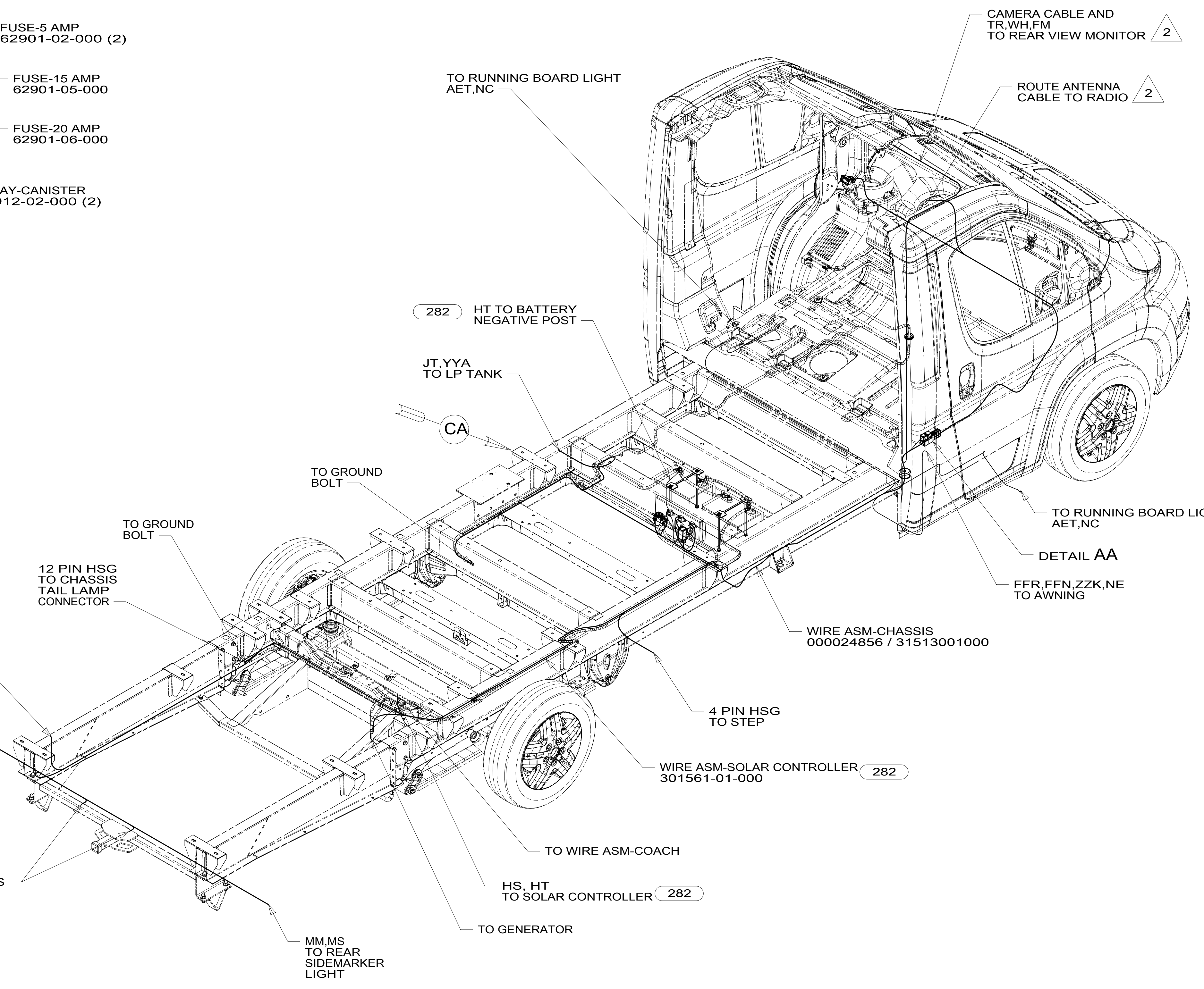


8 7 6 5 4 3 2 1



DETAIL AA



- 282 SOLAR PANEL - 100 WATT
- 265 CODES/STANDARDS-CSA/CMVSS
- 1B1 CODES/STANDARDS USA

1B1 265



DSNR:		ALL DIMENSIONS ARE IN MILLIMETERS	
DIFFR:		MATERIAL:	
UNSPECIFIED TOLERANCES:			
WHOLE DIM (X)	: 3		
ONE-PLACE (X.X)	: 1.5		
TWO-PLACE (X.XX)	: 0.50		
ANGLE	: 1°		
REFER TO ES0018 FOR FASTENER TIGHTENING GUIDELINES		WEIGHT: (LBS)	FIRST USED:
			17 623L
DESCRIPTION:			
WIRING INSTL-CHASSIS			
SHEET:	ITEM/PART NO.:	REV:	
1 OF 4	000024148 / 31489901000		
REF:		1 30-Mar-2017	

2 SEE RADIO/MONITOR INSTL FOR ADDITIONAL INFORMATION.

1. SECURE CONDUIT 41953, TAB AS REQUIRED, OVER ALL WIRES IN CONTACT WITH SHARP EDGES.

NOTES:

FOR ELECTRICAL TORQUE SPECIFICATIONS SEE DWG NO. 128783-01-000

FOR ELECTRICAL CALLOUTS SEE DWG NO. 121339-01-000

8 7 6 5 4 3 2 1

CABLE ASM-STARTER (RED)	185087-01-038
CABLE ASM-COACH BATTERY (YEL)	141415-52-010
CABLE ASM-COACH BATTERY GND (BLK)	133566-17-022
CABLE ASM-GENERATOR (GRN)	141415-42-030
CABLE ASM-GENERATOR GND (BLK)	133566-17-014
CABLE ASM-JUMPER,POS	141415-52-004
CABLE ASM-JUMPER,NEG	133566-12-004

22W

22W

22W

22W

22W

BATTERY-12V,AGM,GROUP 24
000045727 / 321049-01-000
TIE DOWN ASM-BATTERY
160014-03-CHT
BOLT
51387-06-000 (2)
NUT
D39-05-00U (2)
WASHER-SPEEDNUT
184541-01-CHT (2)

BATTERY-12V,AGM,GROUP 24
000045727 / 321049-01-000
TIE DOWN ASM-BATTERY
160014-03-CHT
BOLT
51387-06-000 (2)
NUT
D39-05-00U (2)
WASHER-SPEEDNUT
184541-01-CHT (2)

CABLE ASM-COACH
BATTERY GND
(BLK)

CABLE ASM-STARTER
(RED)

CABLE ASM-
JUMPER,NEG
(BLK)

CABLE ASM-
JUMPER,POS
(YEL)

CABLE ASM-COACH
BATTERY POS
(YEL)

CABLE ASM-GENERATOR
(GRN)

DETAIL CA

2 CONNECT CABLE ASM-COACH BATTERY POS (YEL) HERE WITH 22W

1 CONNECT CABLE ASM-COACH BATTERY POS (YEL) HERE WITH 12X

NOTES:

FOR ELECTRICAL
TORQUE
SPECIFICATIONS
SEE DWG NO.
128783-01-000

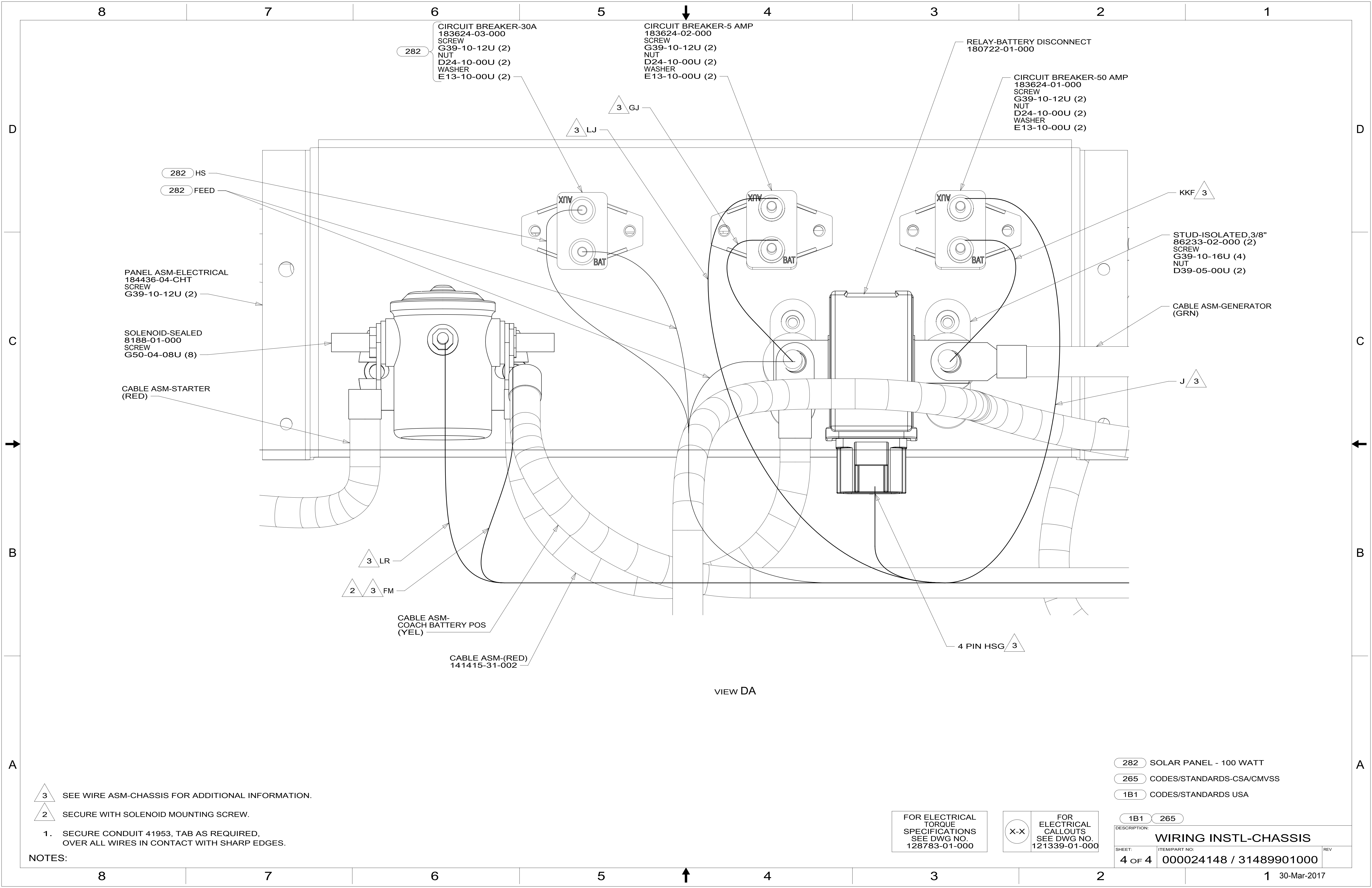
X-X

FOR ELECTRICAL
CALLOUTS
SEE DWG NO.
121339-01-000

- 12X BATTERY-ONE
- 22W BATTERY-SECOND
- 265 CODES/STANDARDS-CSA/CMVSS
- 1B1 CODES/STANDARDS USA

1B1 265

DESCRIPTION: WIRING INSTL-CHASSIS		
SHEET: 3 OF 4	ITEM/PART NO: 000024148 / 31489901000	REV



CIRCUIT BREAKER-30A
183624-03-000
SCREW
G39-10-12U (2)
NUT
D24-10-00U (2)
WASHER
E13-10-00U (2)

CIRCUIT BREAKER-5 AMP
183624-02-000
SCREW
G39-10-12U (2)
NUT
D24-10-00U (2)
WASHER
E13-10-00U (2)

RELAY-BATTERY DISCONNECT
180722-01-000

CIRCUIT BREAKER-50 AMP
183624-01-000
SCREW
G39-10-12U (2)
NUT
D24-10-00U (2)
WASHER
E13-10-00U (2)

PANEL ASM-ELECTRICAL
184436-04-CHT
SCREW
G39-10-12U (2)

SOLENOID-SEALED
8188-01-000
SCREW
G50-04-08U (8)

CABLE ASM-STARTER
(RED)

KKF 3

STUD-ISOLATED, 3/8"
86233-02-000 (2)
SCREW
G39-10-16U (4)
NUT
D39-05-00U (2)

CABLE ASM-GENERATOR
(GRN)

J 3

3 LR

2 3 FM

CABLE ASM-
COACH BATTERY POS
(YEL)

CABLE ASM-(RED)
141415-31-002

4 PIN HSG 3

VIEW DA

3 SEE WIRE ASM-CHASSIS FOR ADDITIONAL INFORMATION.

2 SECURE WITH SOLENOID MOUNTING SCREW.

1. SECURE CONDUIT 41953, TAB AS REQUIRED,
OVER ALL WIRES IN CONTACT WITH SHARP EDGES.

NOTES:

- 282 SOLAR PANEL - 100 WATT
- 265 CODES/STANDARDS-CSA/CMVSS
- 1B1 CODES/STANDARDS USA

FOR ELECTRICAL
TORQUE
SPECIFICATIONS
SEE DWG NO.
128783-01-000

FOR
ELECTRICAL
CALLOUTS
SEE DWG NO.
121339-01-000

DESCRIPTION: WIRING INSTL-CHASSIS	
SHEET: 4 OF 4	ITEM/PART NO.: 000024148 / 31489901000
REV	