

8 7 6 5 4 3 2 1

D  
C  
B  
A

D  
C  
B  
A

TV-24" HDTV, 12 VDC  
000031269 / 316937-01-000  
BRACKET-TV SWING MOUNT  
179241-05-CHT  
SCREW  
000G67-10-12U (6)  
PLATE-MOUNTING,TV  
191131-06-CHT  
NUT  
000D65-10-00U (4)  
SCREW  
0MG02U-04-010 (4)  
SCREW  
G11-08-24U (2)

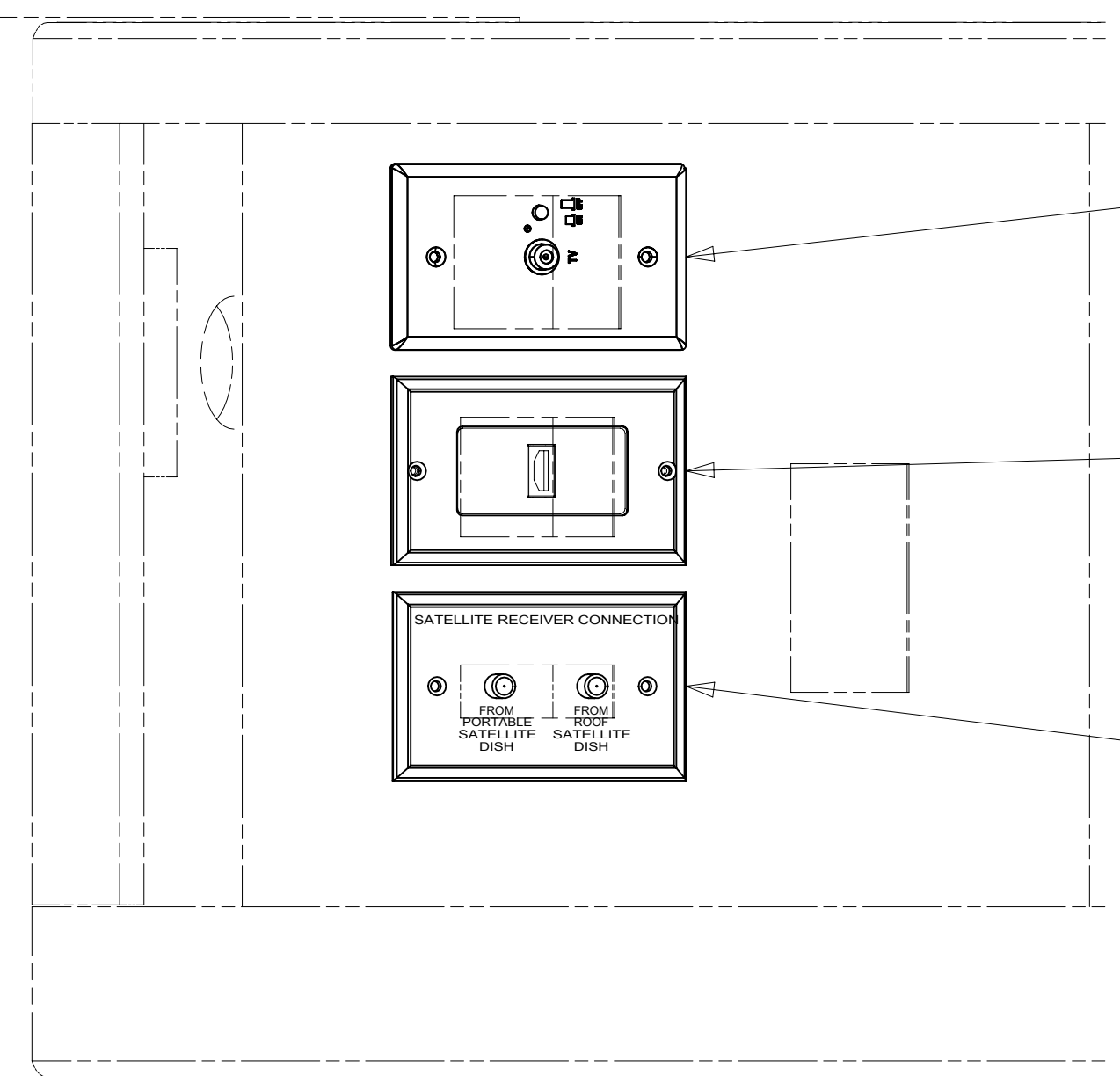
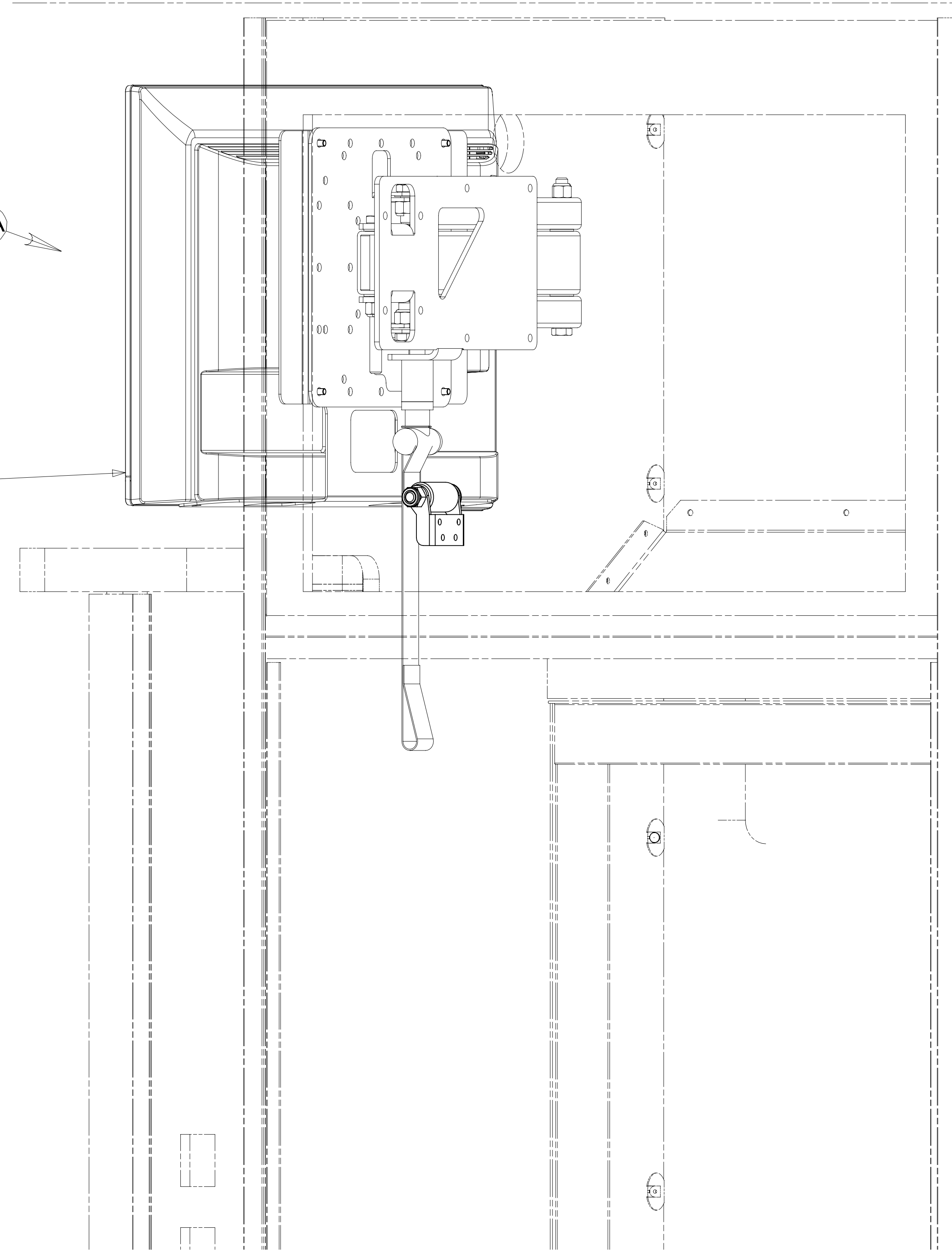
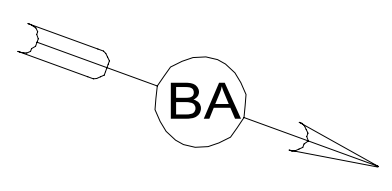


PLATE-WALL  
179004-02-CHT

PLATE-HDMI  
175530-04-CHT  
SCREW  
G13-05-10U (2)

PLATE-WALL  
149557-09-CHT  
SCREW  
G67-10-08U (2)

265 CODES/STANDARDS-CSA/CMVSS  
1B1 CODES/STANDARDS USA  
1B1 265



DSNR:		ALL DIMENSIONS ARE IN MILLIMETERS	
DIFFR:		MATERIAL:	
UNSPECIFIED TOLERANCES:			
WHOLE DIM (X)	: 3		
ONE-PLACE (X.X)	: 1.5		
TWO-PLACE (X.XX)	: 0.50		
ANGLE	: 1°		
REFER TO ES0018 FOR FASTENER TIGHTENING GUIDELINES		WEIGHT: (LBS)	FIRST USED:
			17 623L
DESCRIPTION: <b>WIRING INSTL-TV/DVD</b>			
SHEET:	ITEM/PART NO.:	REV	
1 OF 3	000024146 / 31489701000		
REF:		1 18-Jan-2017	

FOR ELECTRICAL TORQUE SPECIFICATIONS SEE DWG NO. 128783-01-000

FOR ELECTRICAL CALLOUTS SEE DWG NO. 121339-01-000

8 7 6 5 4 3 2 1

8 7 6 5 4 3 2 1



D

D

C

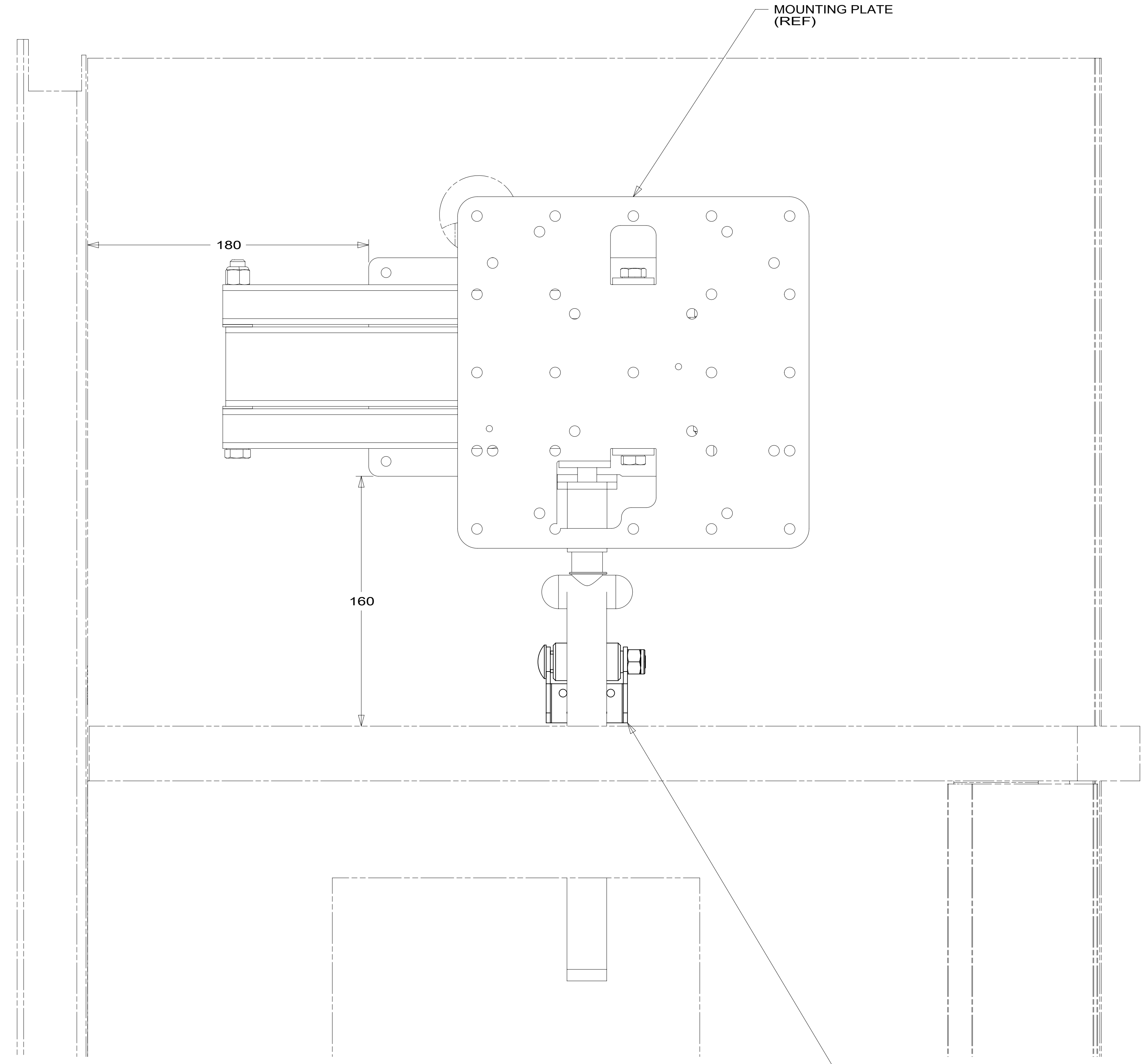
C

B

B

A

A



VIEW BA  
(TV NOT SHOWN)

ROLLER ASM-CABT, DELRIN  
153088-05-CHT  
SCREW  
G67-10-12U (4)

FOR ELECTRICAL  
TORQUE  
SPECIFICATIONS  
SEE DWG NO.  
128783-01-000

FOR  
ELECTRICAL  
CALLOUTS  
SEE DWG NO.  
121339-01-000

265 CODES/STANDARDS-CSA/CMVSS  
1B1 CODES/STANDARDS USA

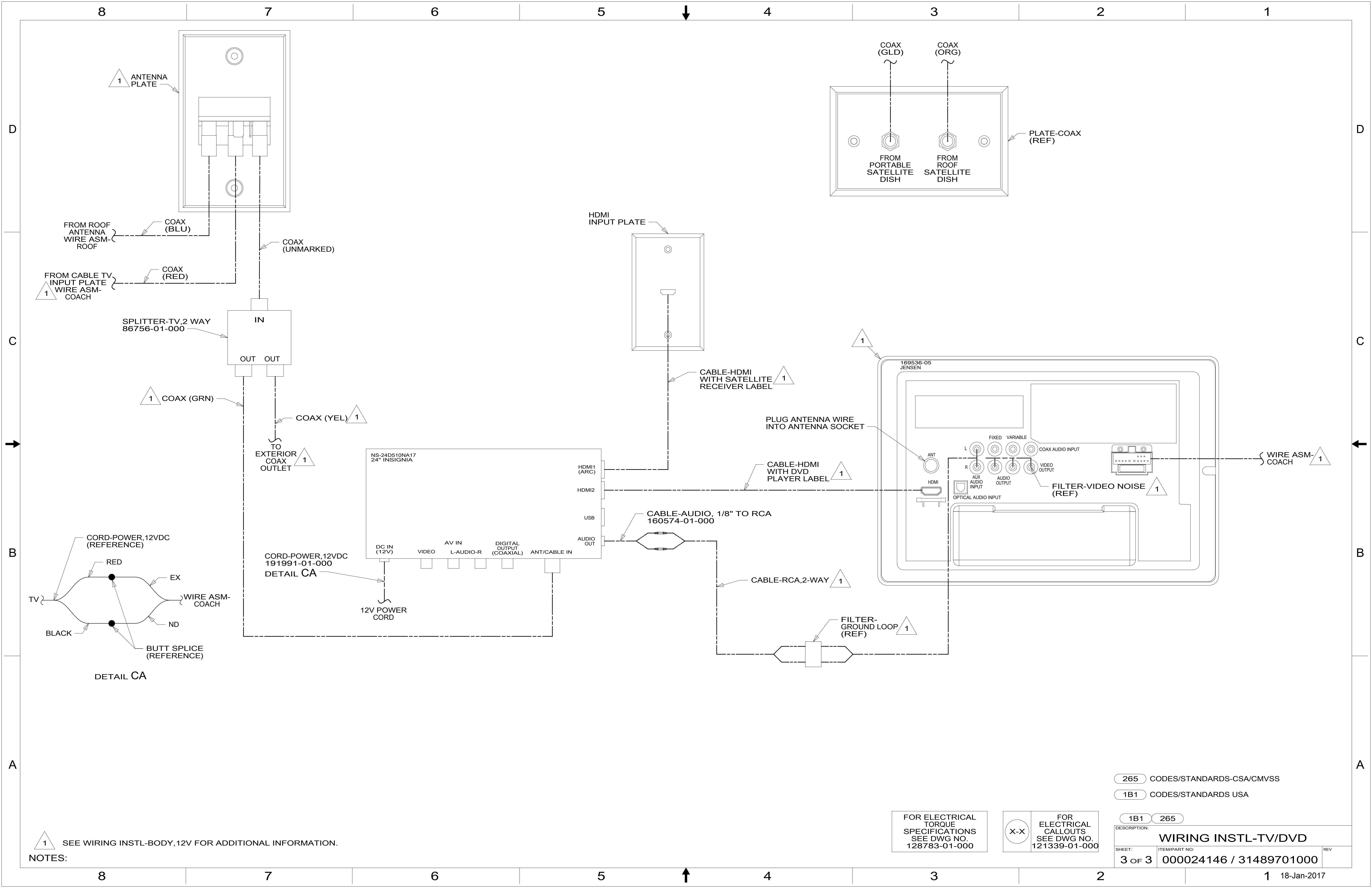
1B1 265

DESCRIPTION:  
**WIRING INSTL-TV/DVD**

SHEET: 2 OF 3 ITEM/PART NO: 000024146 / 31489701000 REV

8 7 6 5 4 3 2 1 18-Jan-2017





1 SEE WIRING INSTL-BODY, 12V FOR ADDITIONAL INFORMATION.

FOR ELECTRICAL TORQUE SPECIFICATIONS SEE DWG NO. 128783-01-000

FOR ELECTRICAL CALLOUTS SEE DWG NO. 121339-01-000

265 CODES/STANDARDS-CSA/CMVSS  
 1B1 CODES/STANDARDS USA

DESCRIPTION: <b>WIRING INSTL-TV/DVD</b>	
SHEET: 3 OF 3	ITEM/PART NO: 000024146 / 31489701000
REV 1 18-Jan-2017	