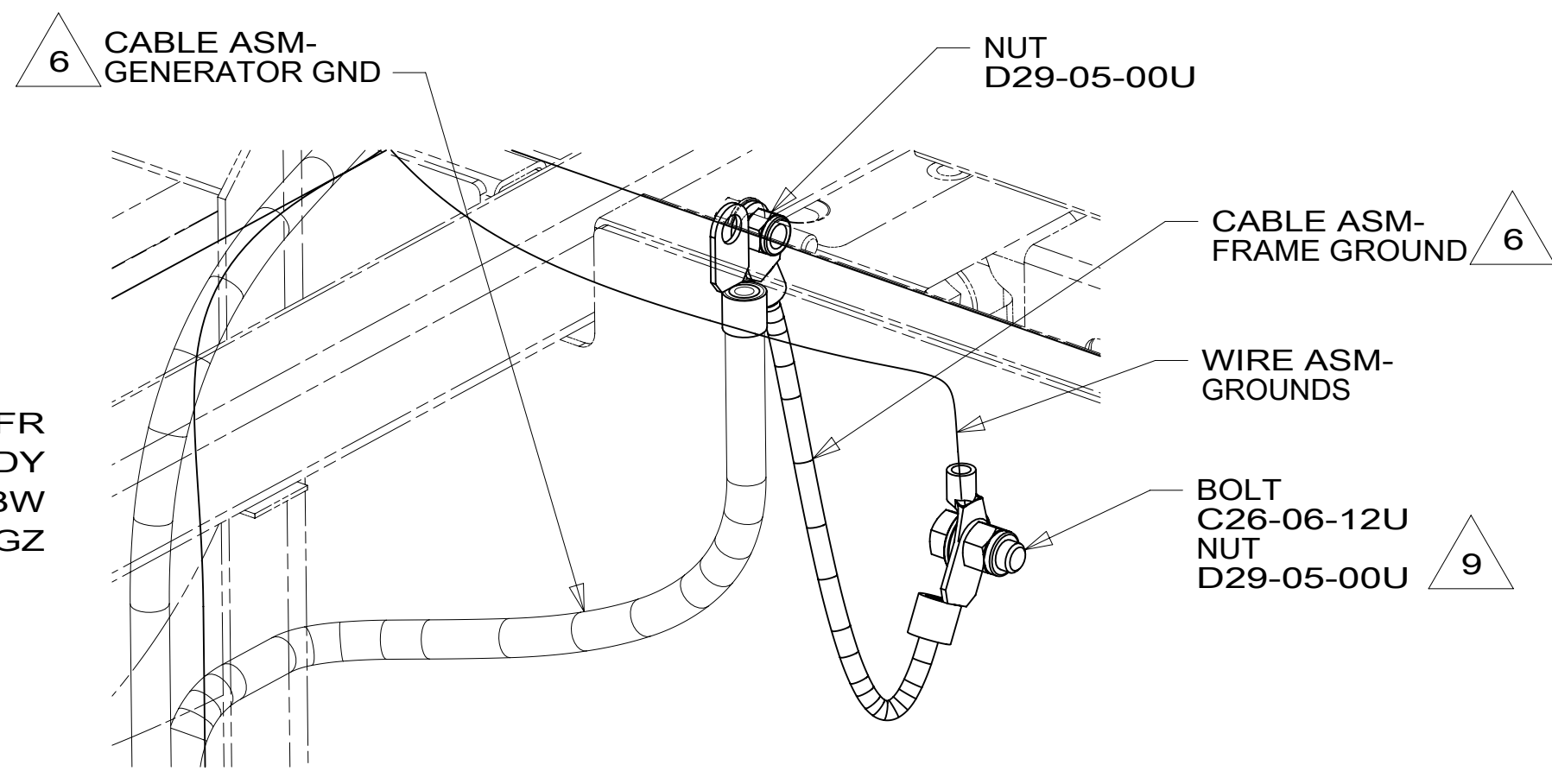


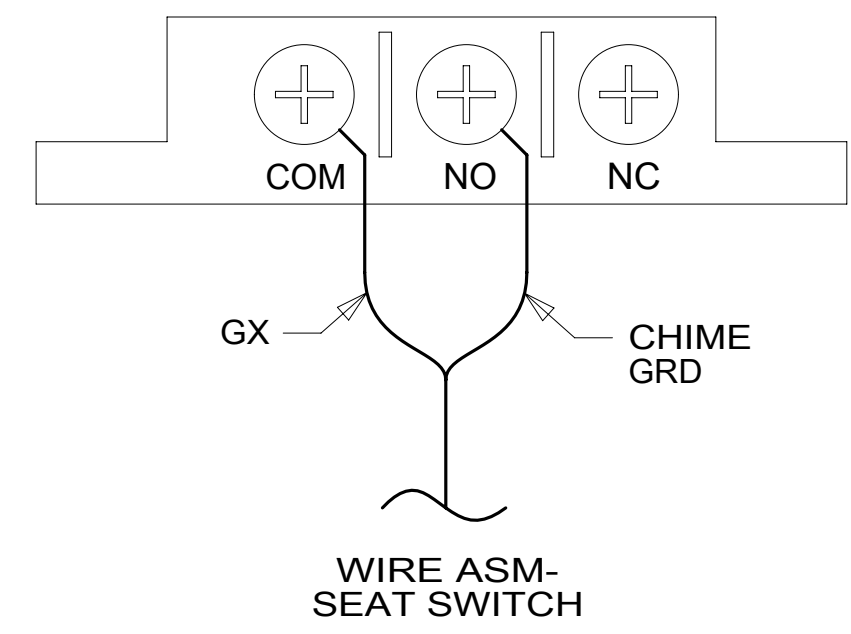
SOCKET 29 - CIRCUIT FR
 SOCKET 30 - CIRCUIT DY
 SOCKET 32 - CIRCUIT BW
 SOCKET 43 - CIRCUIT GZ

FORD HIGH SPECIFICATION VEHICLE
 INTERFACE CONNECTOR

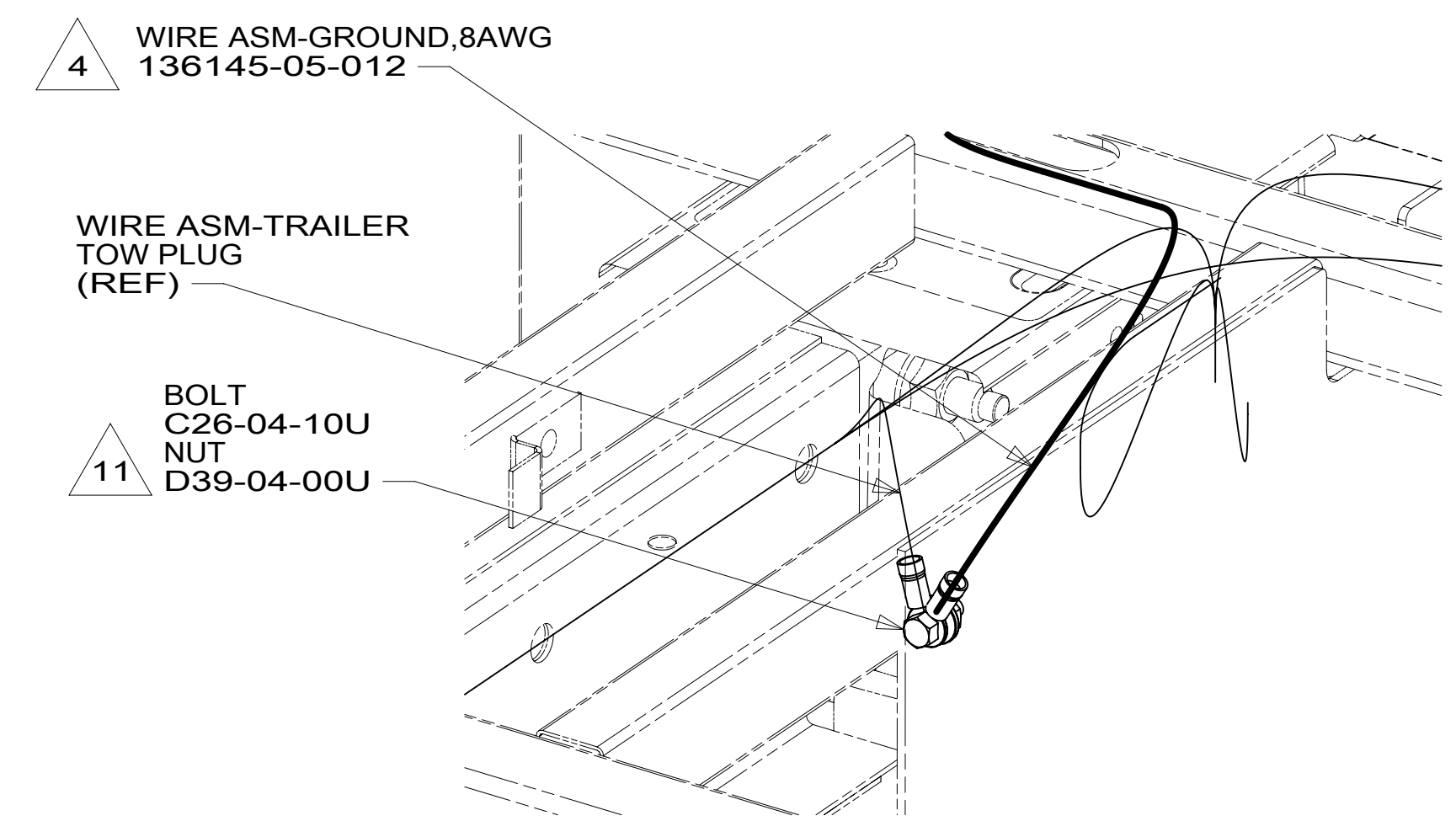
DETAIL AA



VIEW AB



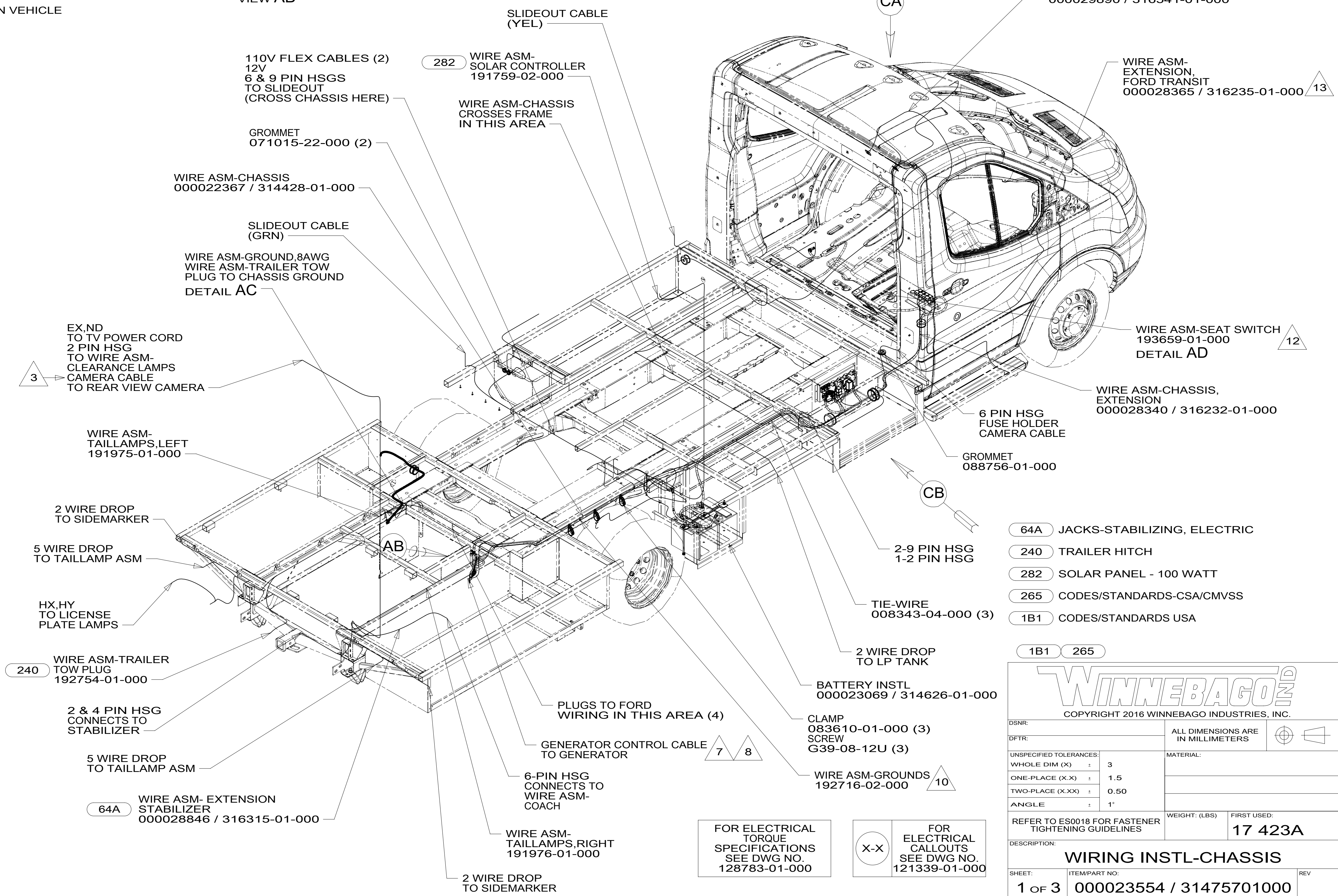
WIRE ASM-
 SEAT SWITCH
 DETAIL AD
 (UNDER PASSENGER SEAT)



DETAIL AC

- 13 SEE DETAIL AA FOR CONNECTION OF WIRE ASM TO FORD SUPPLIED CONNECTOR LOCATED BEHIND GLOVE BOX.
- 12 SEE INTERIOR INSTL-FRONT FOR ADDITIONAL INFORMATION.
- 11 DRILL 6.35 MM HOLE IN CHASSIS RAIL FLANGE. CLEAN PAINT FROM FLANGE APPROXIMATELY 10 MM AROUND HOLE. BOLT AND NUT GROUND RING FROM WIRE ASM-TRAILER TOW PLUG TO FLANGE.
- 10 SEE DETAIL AB FOR CONNECTION OF CABLE ASM TO CHASSIS RAIL.
- 9 DRILL 10.4 MM HOLE IN CHASSIS RAIL FLANGE. CLEAN PAINT FROM FLANGE APPROXIMATELY 10 MM AROUND HOLE. BOLT AND NUT GROUND TERMINAL TO FLANGE.
- 8 ROUTE GENERATOR CABLE ALONG WITH WIRE ASM-CHASSIS TO AND THROUGH FLOOR TO WIRE ASM-RIGHT. ROUTE UP TO MONITOR PANEL AREA.
- 7 10 PIN HSG CONNECTS TO GENERATOR.
- 6 SEE BATTERY INSTL FOR ADDITIONAL INFORMATION.
- 5 WIRING IS PART OF WIRE ASM-POWER MIRRORS.
- 4 SEE LOAD CENTER/ATS ASM FOR ADDITIONAL INFORMATION.
- 3 SEE RADIO/MONITOR INSTL FOR ADDITIONAL INFORMATION.
2. USE WIRE TIES 8343-04-000 AND 116673-02-000 APPROXIMATELY 600MM ON CENTER UNLESS OTHERWISE SPECIFIED.
1. SECURE CONDUIT 41953, TAB AS REQUIRED, OVER ALL WIRES IN CONTACT WITH SHARP EDGES.

NOTES:



- 64A JACKS-STABILIZING, ELECTRIC
- 240 TRAILER HITCH
- 282 SOLAR PANEL - 100 WATT
- 265 CODES/STANDARDS-CSA/CMVSS
- 1B1 CODES/STANDARDS USA

1B1 265

WINNEBAGO
 COPYRIGHT 2016 WINNEBAGO INDUSTRIES, INC.

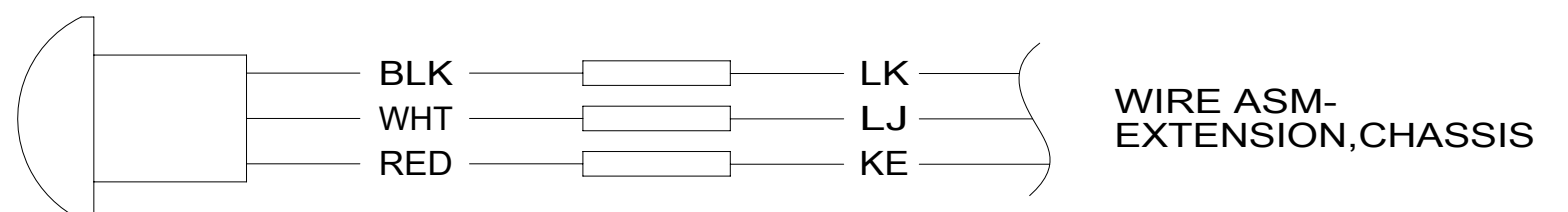
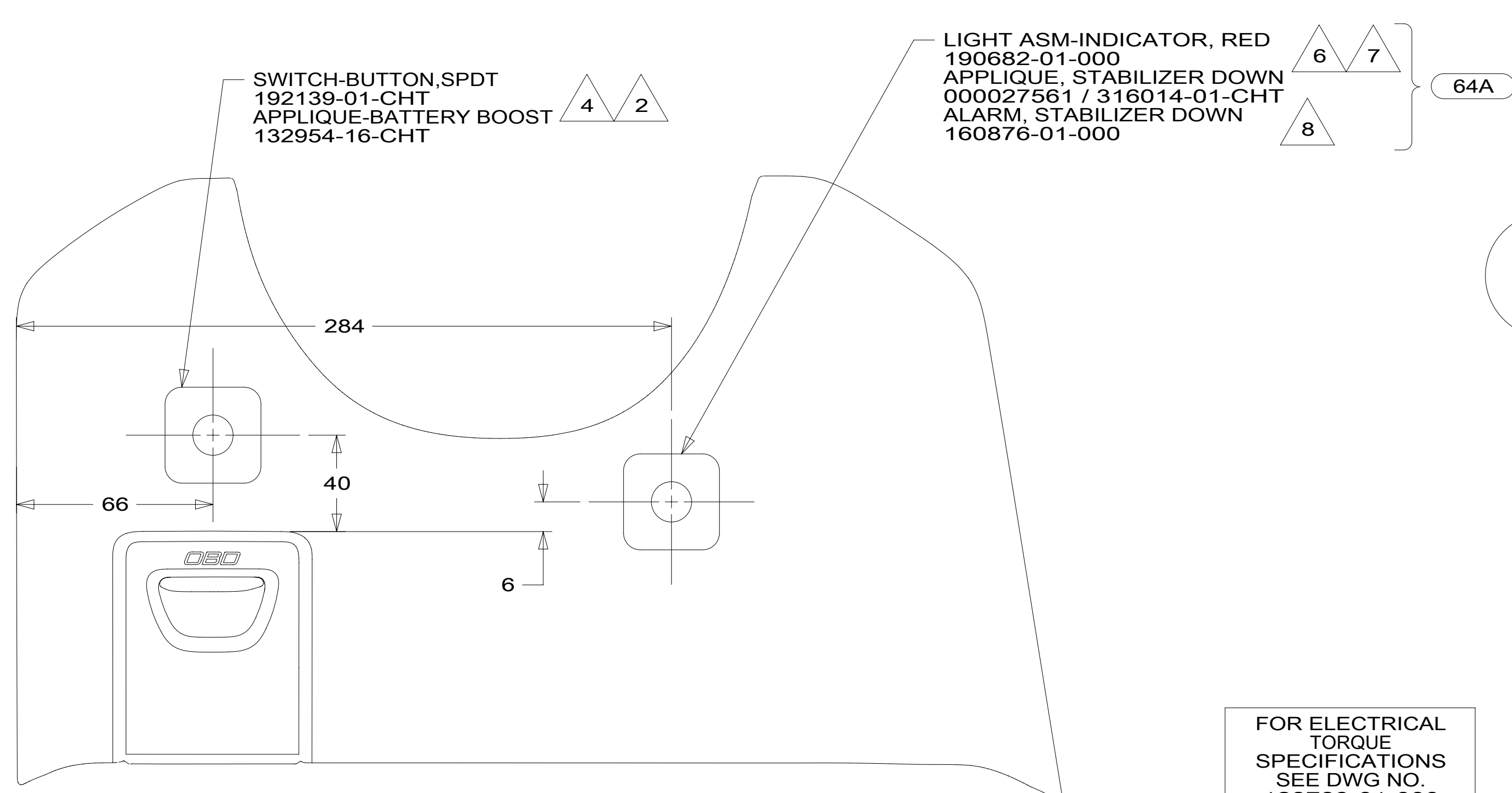
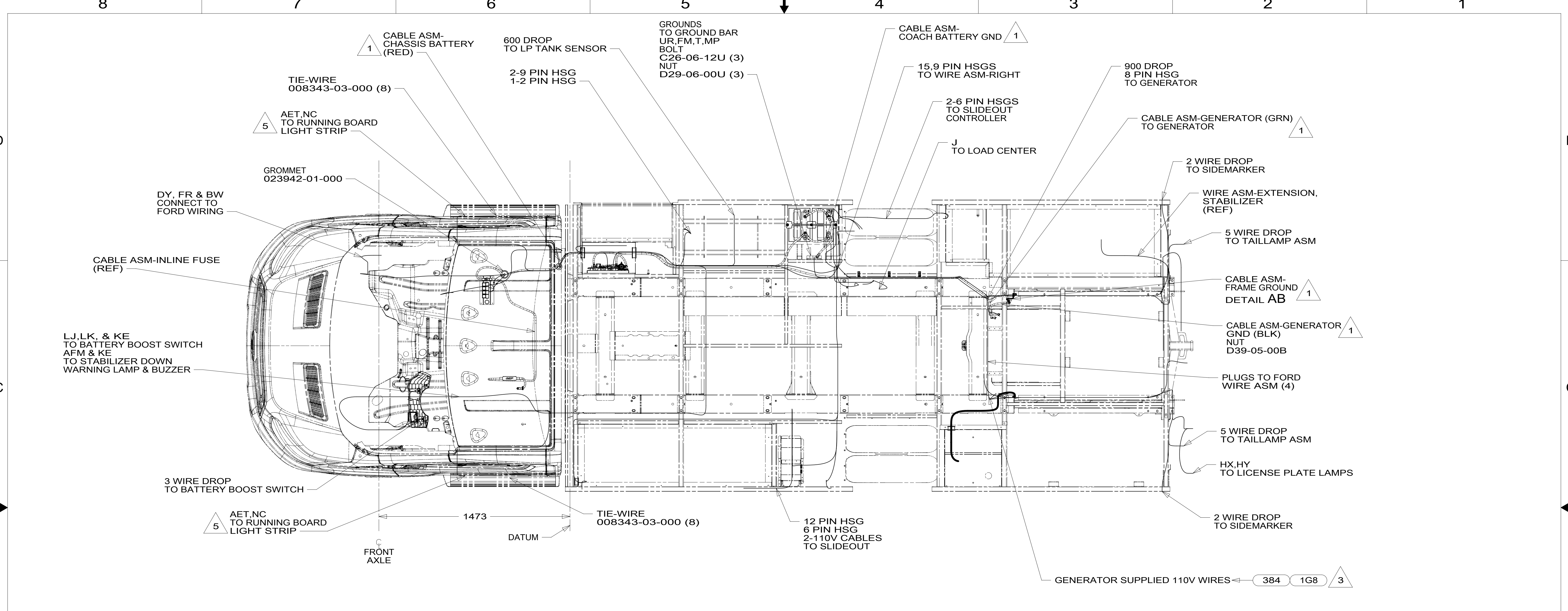
DSNR:	ALL DIMENSIONS ARE IN MILLIMETERS	
DFFR:		
UNSPECIFIED TOLERANCES:	MATERIAL:	
WHOLE DIM (X) : 3		
ONE-PLACE (X.X) : 1.5		
TWO-PLACE (X.XX) : 0.50		
ANGLE : 1°		
REFER TO ES0018 FOR FASTENER TIGHTENING GUIDELINES	WEIGHT: (LBS)	FIRST USED:
DESCRIPTION:		17 423A
WIRING INSTL-CHASSIS		
SHEET: 1 OF 3	ITEM/PART NO: 000023554 / 31475701000	REV:

FOR ELECTRICAL TORQUE SPECIFICATIONS SEE DWG NO. 128783-01-000

FOR ELECTRICAL CALLOUTS SEE DWG NO. 121339-01-000

FOR ELECTRICAL TORQUE SPECIFICATIONS SEE DWG NO. 128783-01-000

FOR ELECTRICAL CALLOUTS SEE DWG NO. 121339-01-000



- NOTES:**
- 8 SECURE ALARM BACK TO WIRE LOOM WITH TIE-WIRE 008343-03-000
 - 7 CONNECT KE TO TERMINAL MARKED RED' CONNECT ARM TO UNMARKED TERMINAL
 - 6 DRILL 12.7 MM HOLE INTO DASH PANEL.
 - 5 ROUTE WIRING ALONG RUNNING BOARD SUPPORT, ATTACH WIRE WITH WIRE TIE USING HOLES PROVIDED IN SUPPORT.
 - 4 SEE DETAIL BB FOR CONNECTION OF BUTTON SWITCH.
 - 3 SEE GENERATOR INSTL FOR ADDITIONAL INFORMATION.
 - 2 DRILL 12.3 MM HOLE INTO DASH PANEL.
 - 1 SEE BATTERY INSTL FOR ADDITIONAL INFORMATION.

- 64A JACKS-STABILIZING, ELECTRIC
- 1G8 GEN-2.8KW ONAN GAS
- 384 GEN 2.5KW ONAN-MICROLITE
- 265 CODES/STANDARDS-CSA/CMVSS
- 1B1 CODES/STANDARDS USA

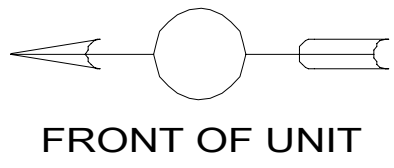
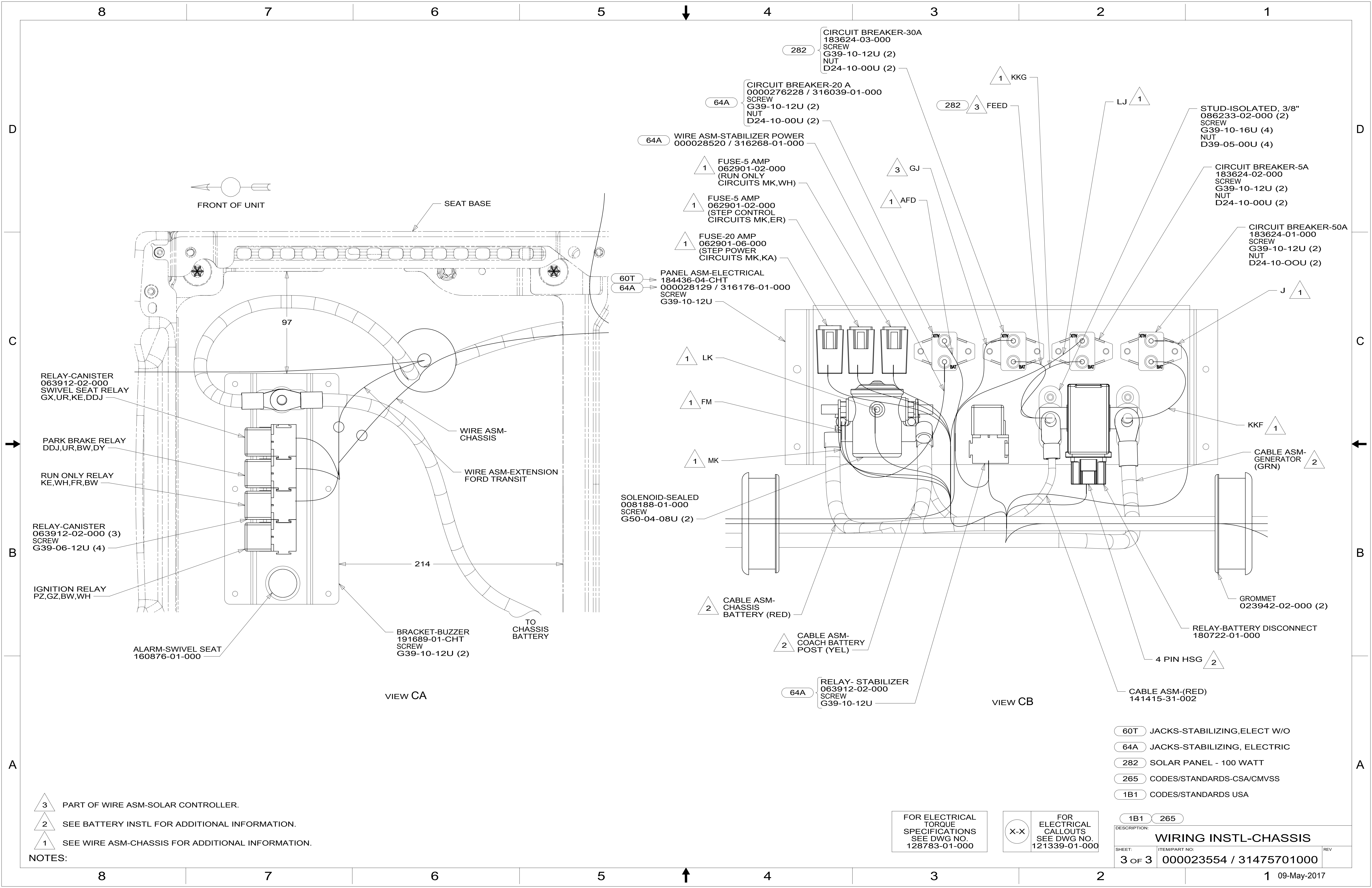
FOR ELECTRICAL TORQUE SPECIFICATIONS SEE DWG NO. 128783-01-000

FOR ELECTRICAL CALLOUTS SEE DWG NO. 121339-01-000

DESCRIPTION: WIRING INSTL-CHASSIS		
SHEET: 2 OF 3	ITEM/PART NO: 000023554 / 31475701000	REV

DETAIL BA

DETAIL BB



FRONT OF UNIT

SEAT BASE

97

RELAY-CANISTER
063912-02-000
SWIVEL SEAT RELAY
GX,UR,KE,DDJ

PARK BRAKE RELAY
DDJ,UR,BW,DY

RUN ONLY RELAY
KE,WH,FR,BW

RELAY-CANISTER
063912-02-000 (3)
SCREW
G39-06-12U (4)

IGNITION RELAY
PZ,GZ,BW,WH

ALARM-SWIVEL SEAT
160876-01-000

VIEW CA

WIRE ASM-
CHASSIS

WIRE ASM-EXTENSION
FORD TRANSIT

214

BRACKET-BUZZER
191689-01-CHT
SCREW
G39-10-12U (2)

TO
CHASSIS
BATTERY

60T PANEL ASM-ELECTRICAL
184436-04-CHT
64A 000028129 / 316176-01-000
SCREW
G39-10-12U

1 LK

1 FM

1 MK

SOLENOID-SEALED
008188-01-000
SCREW
G50-04-08U (2)

2 CABLE ASM-
CHASSIS
BATTERY (RED)

2 CABLE ASM-
COACH BATTERY
POST (YEL)

64A RELAY- STABILIZER
063912-02-000
SCREW
G39-10-12U

VIEW CB

CIRCUIT BREAKER-30A
183624-03-000
SCREW
G39-10-12U (2)
NUT
D24-10-00U (2)

64A CIRCUIT BREAKER-20 A
0000276228 / 316039-01-000
SCREW
G39-10-12U (2)
NUT
D24-10-00U (2)

64A WIRE ASM-STABILIZER POWER
000028520 / 316268-01-000

1 FUSE-5 AMP
062901-02-000
(RUN ONLY
CIRCUITS MK,WH)

1 FUSE-5 AMP
062901-02-000
(STEP CONTROL
CIRCUITS MK,ER)

1 FUSE-20 AMP
062901-06-000
(STEP POWER
CIRCUITS MK,KA)

3 GJ

1 AFD

282 3 FEED

1 KKG

LJ 1

STUD-ISOLATED, 3/8"
086233-02-000 (2)
SCREW
G39-10-16U (4)
NUT
D39-05-00U (4)

CIRCUIT BREAKER-5A
183624-02-000
SCREW
G39-10-12U (2)
NUT
D24-10-00U (2)

CIRCUIT BREAKER-50A
183624-01-000
SCREW
G39-10-12U (2)
NUT
D24-10-00U (2)

J 1

KKF 1

CABLE ASM-
GENERATOR
(GRN) 2

GROMMET
023942-02-000 (2)

RELAY-BATTERY DISCONNECT
180722-01-000

4 PIN HSG 2

CABLE ASM-(RED)
141415-31-002

60T JACKS-STABILIZING,ELECT W/O

64A JACKS-STABILIZING, ELECTRIC

282 SOLAR PANEL - 100 WATT

265 CODES/STANDARDS-CSA/CMVSS

1B1 CODES/STANDARDS USA

3 PART OF WIRE ASM-SOLAR CONTROLLER.

2 SEE BATTERY INSTL FOR ADDITIONAL INFORMATION.

1 SEE WIRE ASM-CHASSIS FOR ADDITIONAL INFORMATION.

NOTES:

FOR ELECTRICAL
TORQUE
SPECIFICATIONS
SEE DWG NO.
128783-01-000

X-X

FOR
ELECTRICAL
CALLOUTS
SEE DWG NO.
121339-01-000

1B1 265

DESCRIPTION:
WIRING INSTL-CHASSIS

SHEET: 3 OF 3 ITEM/PART NO: 000023554 / 31475701000 REV

1 09-May-2017