

8

7

6

5



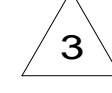
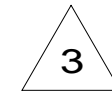
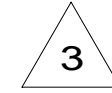
4

3

2

1

CABLE ASM-CHASSIS BATTERY (RED)	141415-37-018	
CABLE ASM-COACH BATTERY (YEL)	141415-52-019	
CABLE ASM-COACH BATTERY GND (BLK)	133567-12-007	
CABLE ASM-GENERATOR (GRN)	141415-42-039	
CABLE ASM-GENERATOR GND (BLK)	133566-12-005	
CABLE ASM-FRAME GND	133566-12-003	



- CODES/STANDARDS-CSA/CMVSS
- CODES/STANDARDS USA
-

WINNEBAGO[®]
COPYRIGHT 2016 WINNEBAGO INDUSTRIES, INC.

DSNR:		ALL DIMENSIONS ARE IN MILLIMETERS	
DIFFR:		MATERIAL:	
UNSPECIFIED TOLERANCES:			
WHOLE DIM (X)	: 3		
ONE-PLACE (X.X)	: 1.5		
TWO-PLACE (X.XX)	: 0.50		
ANGLE	: 1°		
REFER TO ES0018 FOR FASTENER TIGHTENING GUIDELINES		WEIGHT: (LBS)	FIRST USED:
			17 423A
BATTERY INSTL			
SHEET:	ITEM/PART NO.:	REV	
1 OF 2	000023069 / 31462601000		
REF:		1 16-Dec-2016	

- ROUTING OF CABLE SHOWN IN WIRING INSTL-CHASSIS ONLY.
2. BATTERY CABLES ARE NOT TO BE ROUTED OVER BATTERY FILL CAPS.
 1. SEE WIRING INSTL-CHASSIS FOR ADDITIONAL INFORMATION.

NOTES:

FOR ELECTRICAL TORQUE SPECIFICATIONS SEE DWG NO. 128783-01-000

FOR ELECTRICAL CALLOUTS SEE DWG NO. 121339-01-000

8

7

6

5



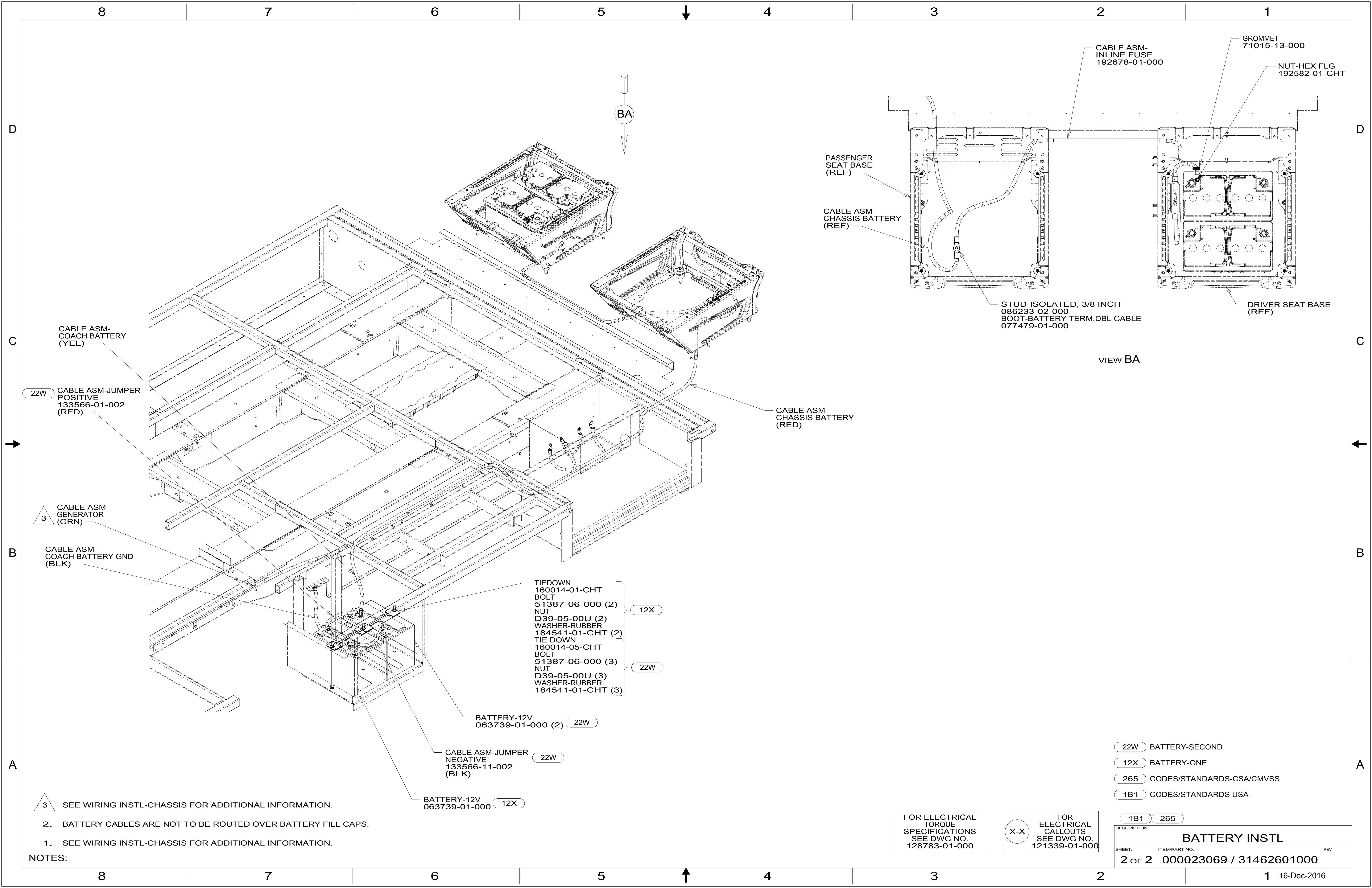
4

3

2

1

16-Dec-2016



CABLE ASM-COACH BATTERY (YEL)

22W CABLE ASM-JUMPER POSITIVE 133566-01-002 (RED)

3 CABLE ASM-GENERATOR (GRN)

CABLE ASM-COACH BATTERY GND (BLK)

- TIEDOWN 160014-01-CHT
- BOLT 51387-06-000 (2)
- NUT D39-05-00U (2)
- WASHER-RUBBER 184541-01-CHT (2)
- TIE DOWN 160014-05-CHT
- BOLT 51387-06-000 (3)
- NUT D39-05-00U (3)
- WASHER-RUBBER 184541-01-CHT (3)

BATTERY-12V 063739-01-000 (2) 22W

CABLE ASM-JUMPER NEGATIVE 133566-11-002 (BLK) 22W

BATTERY-12V 063739-01-000 12X

PASSENGER SEAT BASE (REF)

CABLE ASM-CHASSIS BATTERY (REF)

STUD-ISOLATED, 3/8 INCH 086233-02-000 BOOT-BATTERY TERM, DBL. CABLE 077479-01-000

VIEW BA

CABLE ASM-INLINE FUSE 192678-01-000

GROMMET 71015-13-000

NUT-HEX FLG 192582-01-CHT

DRIVER SEAT BASE (REF)

3 SEE WIRING INSTL-CHASSIS FOR ADDITIONAL INFORMATION.

2. BATTERY CABLES ARE NOT TO BE ROUTED OVER BATTERY FILL CAPS.

1. SEE WIRING INSTL-CHASSIS FOR ADDITIONAL INFORMATION.

NOTES:

FOR ELECTRICAL TORQUE SPECIFICATIONS SEE DWG NO. 128783-01-000

FOR ELECTRICAL CALLOUTS SEE DWG NO. 121339-01-000

- 22W BATTERY-SECOND
- 12X BATTERY-ONE
- 265 CODES/STANDARDS-CSA/CMVSS
- 1B1 CODES/STANDARDS USA

DESCRIPTION:		1B1 265	
BATTERY INSTL			
SHEET:	ITEM/PART NO.:	REV	
2 OF 2	000023069 / 31462601000		