

8

7

6

5

4

3

2

1



D

D

CABLE ASM (YEL) FROM COACH BATTERY FUSE TO COACH SIDE OF AUX START SOLENOID	000284737_03700 / 357069-01-037
CABLE ASM (ORG) FROM COACH BATTERY TO INVERTER FUSE	000284735_00300 / 357068-01-003
CABLE ASM (ORG) FROM INVERTER FUSE TO INVERTER DISCONNECT	000284735_01200 / 357068-01-012
CABLE ASM (ORG) FROM INVERTER DISCONNECT TO INVERTER POSITIVE TERMINAL	000284735_00500 / 357068-01-005
CABLE ASM (BLK) FROM BATTERY TO INVERTER NEGATIVE TERMINAL	000284715_01800 / 357067-01-018
CABLE ASM (BLK) FROM COACH BATTERY TO FRAME RAIL GROUND	000284714_03000 / 357066-01-030
CABLE ASM (BLU) FROM CHASSIS BATTERY DISCONNECT TO LEVELING SYSTEM PUMP	141416-26-110
CABLE ASM (BLK) FROM LEVELING SYSTEM TO FRAME RAIL GROUND	133567-11-009
CABLE ASM (GRN) FROM COACH BAT DISC RELAY FUSE TO PASS THRU STUD IN FRONT LEFT COMPT	000288411_11500 / 357507-01-115
CABLE ASM (GRN) FROM PASS THRU STUD IN FRONT LEFT COMPT TO GENERATOR	000288411_02400 / 357507-01-024
CABLE ASM (BLK) FROM GENERATOR TO FRAME RAIL GROUND BOLT	000284714_01300 / 357066-01-013
CABLE ASM (YEL) JUMPER BETWEEN POSITIVE POSTS ON COACH BATTERY	000284708_00200 / 357062-01-002
CABLE ASM (BLK) JUMPER BETWEEN NEGATIVE POSTS ON COACH BATTERY	000284631_00200 / 357056-01-002
CABLE ASM-TEMPERATURE,BATTERY	175385-03-000
CABLE ASM (RED) FROM CHASSIS BATTERY FUSE TO CHASSIS SIDE OF AUX START SOLENOID	000284748_00900 / 357077-01-009
CABLE ASM (RED) FROM CHASSIS BATTERY TO CHASSIS BATTERY FUSE	000284748_00500 / 357077-01-005
CABLE ASM (YEL) FROM COACH BATTERY TO COACH BATTERY FUSE	000284737_00300 / 357069-01-003
CABLE ASM (RED) JUMPER BETWEEN POSITIVE POSTS IN LEFT FRONT COMPT	000284709_00200 / 357063-01-002

C

C



B

B

A

A

8

7

6

5

4

3

2

1



265 CODES/STANDARDS-CSA/CMVSS

1B1 CODES/STANDARDS USA

1B1 265



COPYRIGHT 2024 WINNEBAGO INDUSTRIES, INC.

	INDICATES A CRITICAL CHARACTERISTIC. ENSURE PROPER PROCEDURES ARE FOLLOWED.
	INDICATES A SIGNIFICANT CHARACTERISTIC. ENSURE PROPER PROCEDURES ARE FOLLOWED.
	INDICATES A KEY CHARACTERISTIC. ENSURE PROPER PROCEDURES ARE FOLLOWED.

FOR ELECTRICAL TORQUE SPECIFICATIONS SEE DWG NO. 128783-01-000

FOR ELECTRICAL CALLOUTS SEE DWG 000228177 344479-01-000

DSNR:		ALL DIMENSIONS ARE IN MILLIMETERS	
DFFR:			
UNSPECIFIED TOLERANCES:		MATERIAL:	
WHOLE DIM (X)	: 3		
ONE-PLACE (X.X)	: 1.5		
TWO-PLACE (X.XX)	: 0.50		
ANGLE	: 1°		
REFER TO ES0018 FOR FASTENER TIGHTENING GUIDELINES	WEIGHT: (LBS)	FIRST USED:	
		17 L36G	
DESCRIPTION:			
BATTERY INSTL			
SHEET:	ITEM/PART NO.:	REV:	
1 OF 5	00022833 / 31457201000		
REF:		1 28-Feb-2024	

8 7 6 5 4 3 2 1

CABLE ASM (GRN)
FROM COACH BAT DISC
RELAY TO PASS THRU STUD

CABLE ASM (GRN)
GENERATER FROM PASS
THRU STUD TO GENERATOR

CABLE ASM (RED)
JUMPER BETWEEN
POSITIVE POSTS

GENERATOR
(REF)

CABLE ASM (BLU)
FROM ISOLATED STUD
IN REAR CHASSIS BREAKER PANEL
TO LEVEL SYSTEM PUMP
DETAIL BA

D

D

C

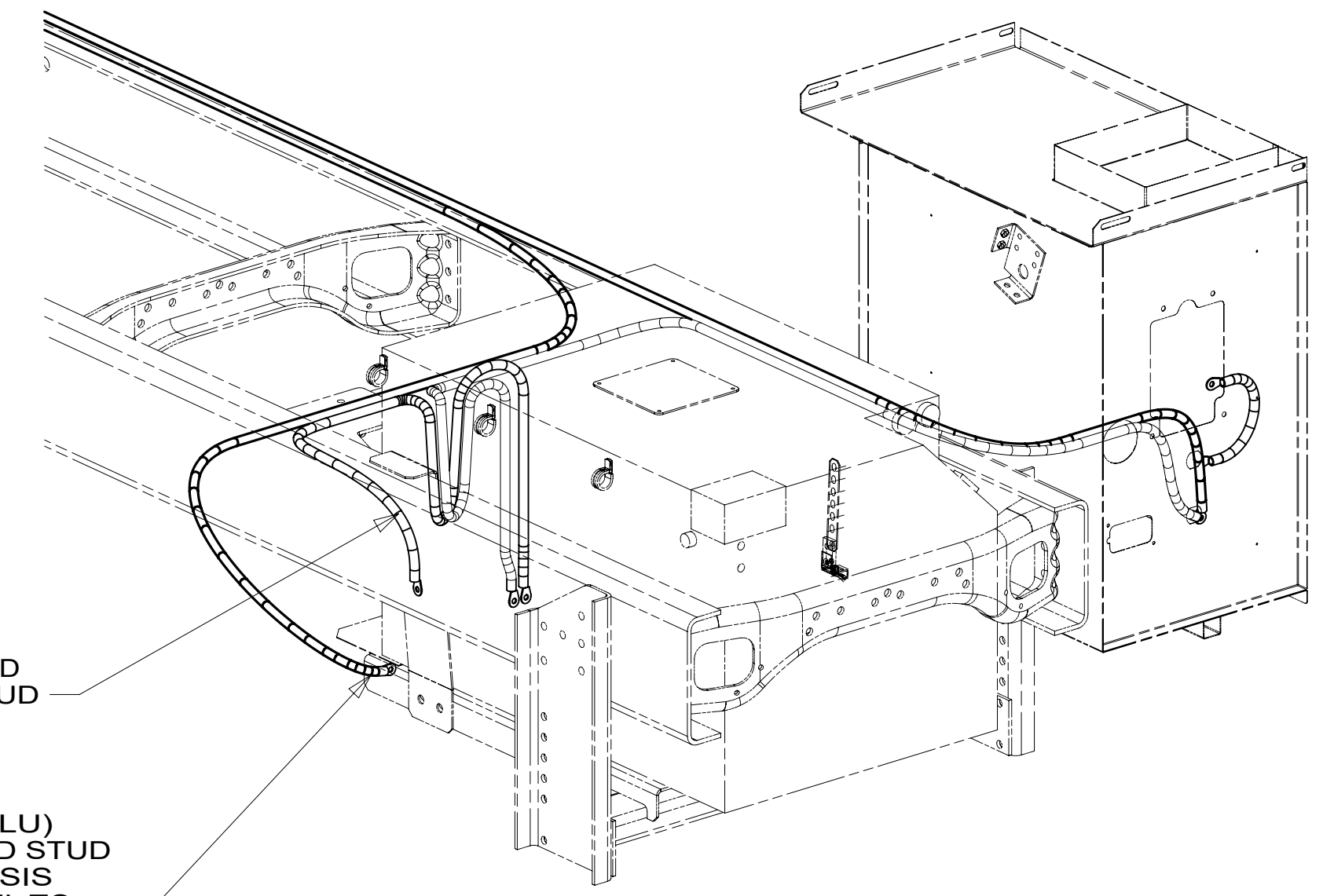
C

B

B

A

A



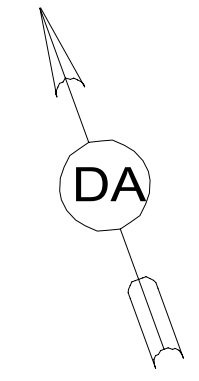
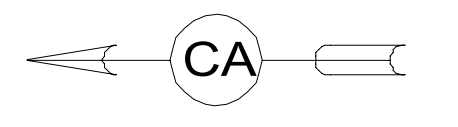
CABLE ASM (BLK)
GENERATOR GROUND
FROM GENERATOR GROUND STUD
TO LEVEL SYSTEM GROUND STUD

CABLE ASM (BLU)
FROM ISOLATED STUD
IN REAR CHASSIS
BREAKER PANEL TO
LEVEL SYSTEM PUMP

DETAIL BA

TO INVERTER

TO CHASSIS
FUSE BLOCK



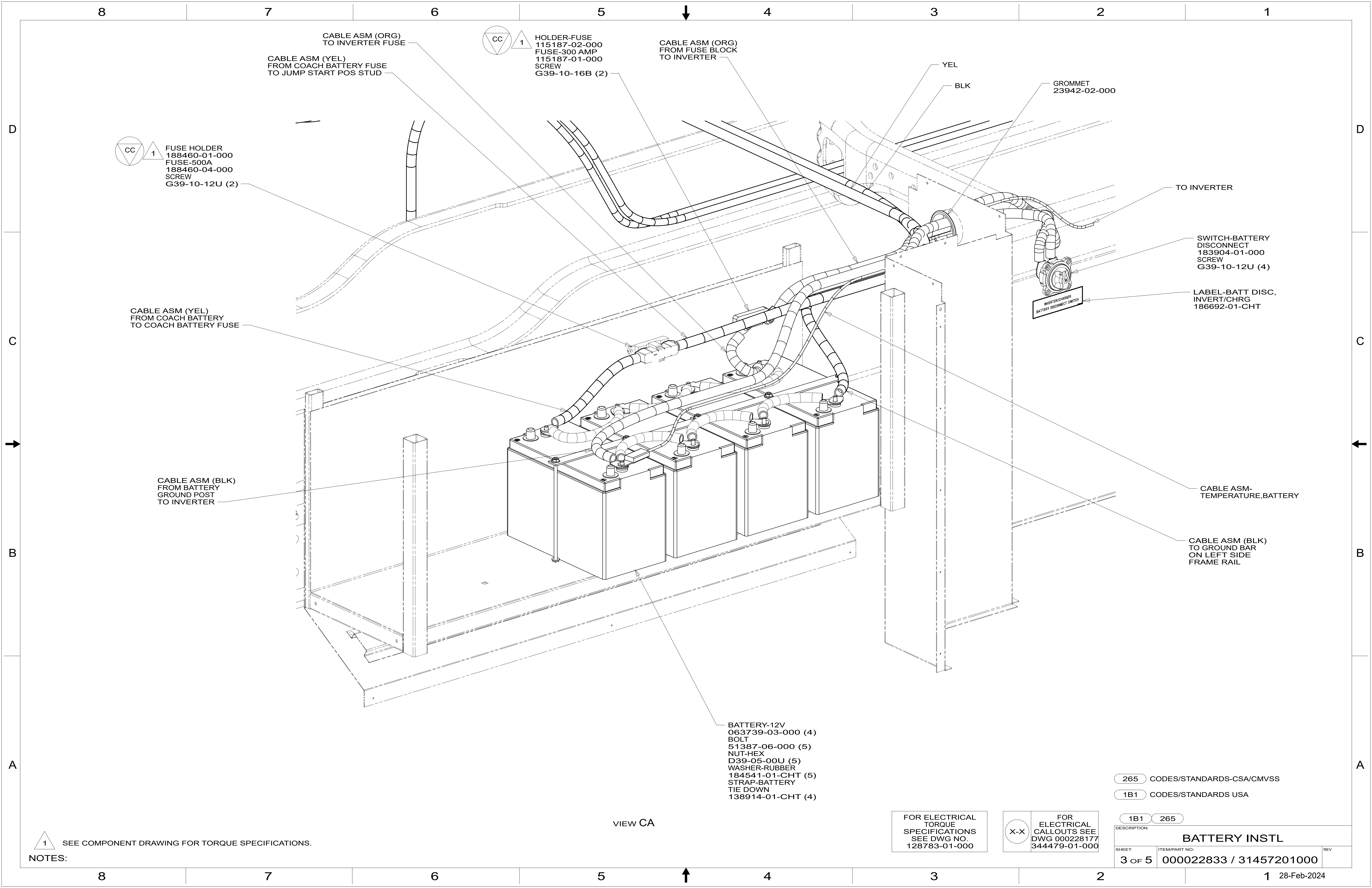
265 CODES/STANDARDS-CSA/CMVSS
1B1 CODES/STANDARDS USA

FOR ELECTRICAL
TORQUE
SPECIFICATIONS
SEE DWG NO.
128783-01-000

FOR
ELECTRICAL
CALLOUTS SEE
DWG 000228177
344479-01-000

DESCRIPTION:		1B1 265	
BATTERY INSTL			
SHEET:	ITEM/PART NO.:	REV	
2 OF 5	000022833 / 31457201000		

8 7 6 5 4 3 2 1 28-Feb-2024



CC 1
 FUSE HOLDER
 188460-01-000
 FUSE-500A
 188460-04-000
 SCREW
 G39-10-12U (2)

CC 1
 HOLDER-FUSE
 115187-02-000
 FUSE-300 AMP
 115187-01-000
 SCREW
 G39-10-16B (2)

BATTERY-12V
 063739-03-000 (4)
 BOLT
 51387-06-000 (5)
 NUT-HEX
 D39-05-00U (5)
 WASHER-RUBBER
 184541-01-CHT (5)
 STRAP-BATTERY
 TIE DOWN
 138914-01-CHT (4)

265 CODES/STANDARDS-CSA/CMVSS
 1B1 CODES/STANDARDS USA

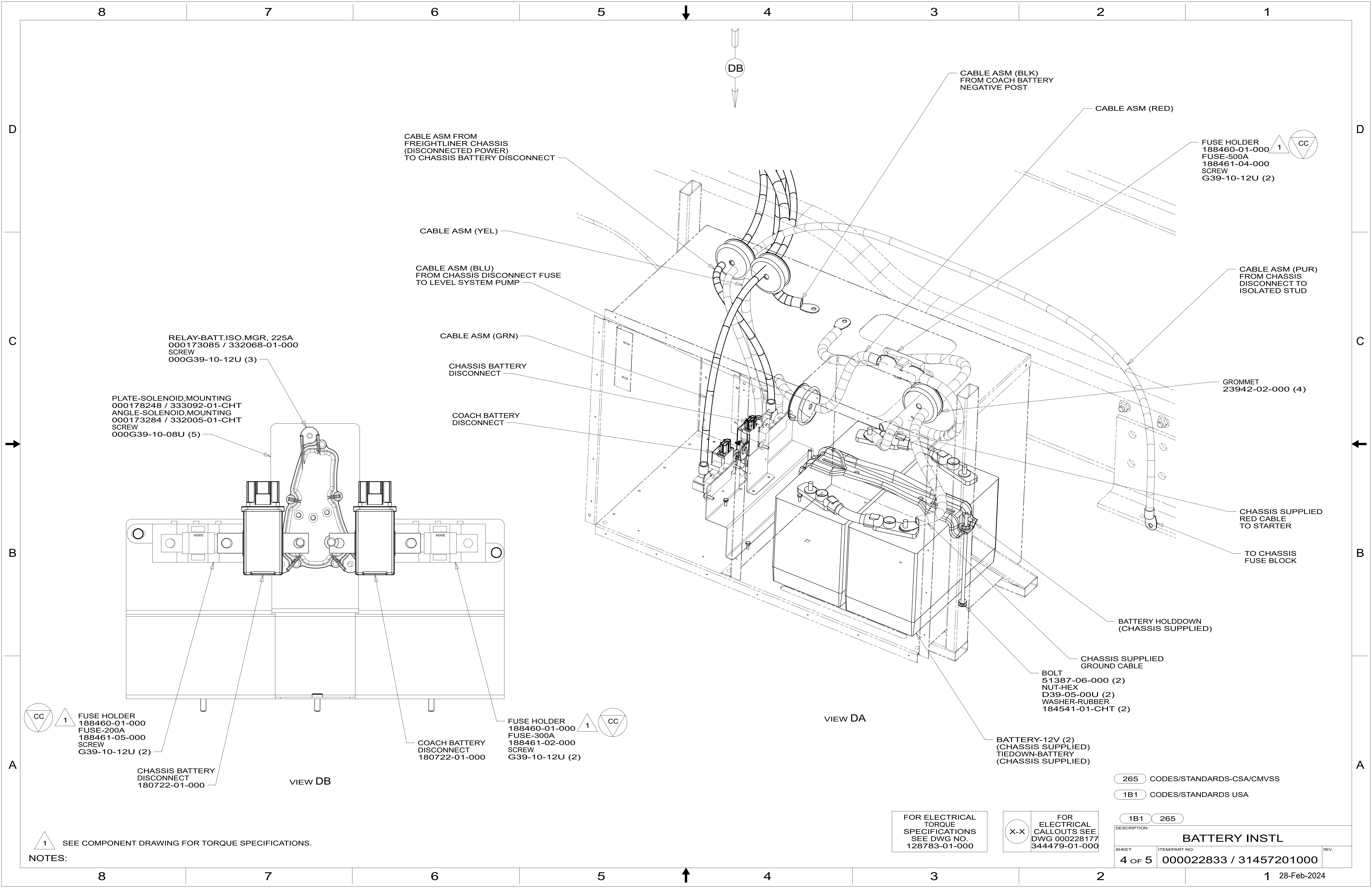
1 SEE COMPONENT DRAWING FOR TORQUE SPECIFICATIONS.
 NOTES:

FOR ELECTRICAL
 TORQUE
 SPECIFICATIONS
 SEE DWG NO.
 128783-01-000

FOR ELECTRICAL
 CALLOUTS SEE
 DWG 000228177
 344479-01-000

DESCRIPTION:		1B1 265	
BATTERY INSTL			
SHEET:	ITEM/PART NO.:	REV	
3 OF 5	000022833 / 31457201000		

VIEW CA



CABLE ASM FROM FREIGHTLINER CHASSIS (DISCONNECTED POWER) TO CHASSIS BATTERY DISCONNECT

CABLE ASM (YEL)

CABLE ASM (BLU) FROM CHASSIS DISCONNECT FUSE TO LEVEL SYSTEM PUMP

CABLE ASM (GRN)

CHASSIS BATTERY DISCONNECT

COACH BATTERY DISCONNECT

CABLE ASM (BLK) FROM COACH BATTERY NEGATIVE POST

CABLE ASM (RED)

FUSE HOLDER 188460-01-000 FUSE-500A 188461-04-000 SCREW G39-10-12U (2)

CABLE ASM (PUR) FROM CHASSIS DISCONNECT TO ISOLATED STUD

GROMMET 23942-02-000 (4)

CHASSIS SUPPLIED RED CABLE TO STARTER

TO CHASSIS FUSE BLOCK

BATTERY HOLDDOWN (CHASSIS SUPPLIED)

CHASSIS SUPPLIED GROUND CABLE

BOLT 51387-06-000 (2) NUT-HEX D39-05-00U (2) WASHER-RUBBER 184541-01-CHT (2)

BATTERY-12V (2) (CHASSIS SUPPLIED) TIEDOWN-BATTERY (CHASSIS SUPPLIED)

RELAY-BATT.ISO.MGR, 225A 000173085 / 332068-01-000 SCREW 000G39-10-12U (3)

PLATE-SOLENOID,MOUNTING 000178248 / 333092-01-CHT ANGLE-SOLENOID,MOUNTING 000173284 / 332005-01-CHT SCREW 000G39-10-08U (5)

FUSE HOLDER 188460-01-000 FUSE-200A 188461-05-000 SCREW G39-10-12U (2)

CHASSIS BATTERY DISCONNECT 180722-01-000

FUSE HOLDER 188460-01-000 FUSE-300A 188461-02-000 SCREW G39-10-12U (2)

COACH BATTERY DISCONNECT 180722-01-000

VIEW DA

VIEW DB

265 CODES/STANDARDS-CSA/CMVSS

1B1 CODES/STANDARDS USA

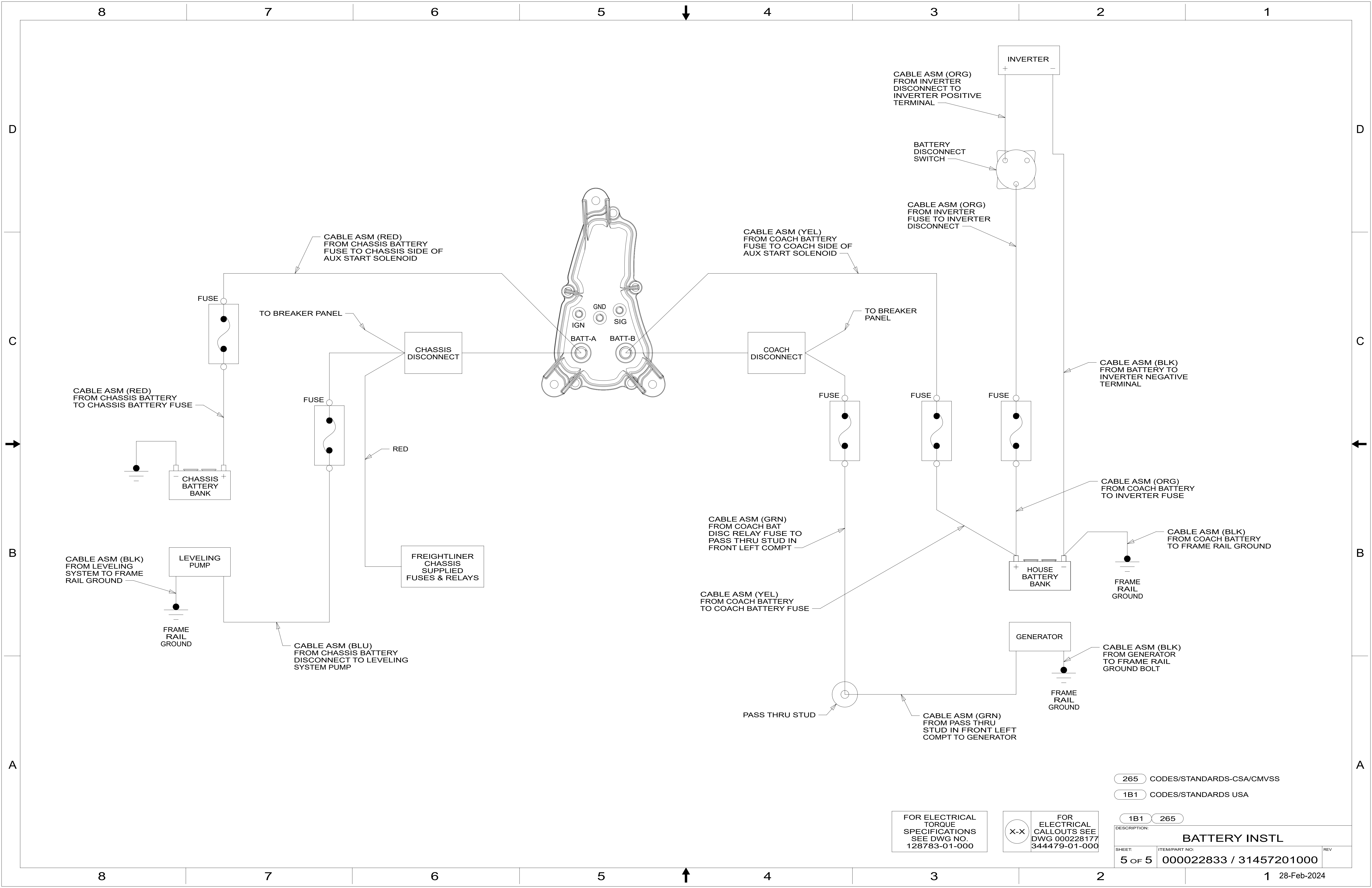
1B1 265

FOR ELECTRICAL TORQUE SPECIFICATIONS SEE DWG NO. 128783-01-000

FOR ELECTRICAL CALLOUTS SEE DWG 000228177 344479-01-000

DESCRIPTION:		
BATTERY INSTL		
SHEET:	ITEM/PART NO.:	REV:
4 OF 5	000022833 / 31457201000	

NOTES: 1 SEE COMPONENT DRAWING FOR TORQUE SPECIFICATIONS.



265 CODES/STANDARDS-CSA/CMVSS
 1B1 CODES/STANDARDS USA

FOR ELECTRICAL TORQUE SPECIFICATIONS SEE DWG NO. 128783-01-000

FOR ELECTRICAL CALLOUTS SEE DWG 000228177 344479-01-000

DESCRIPTION:	
BATTERY INSTL	
SHEET:	ITEM/PART NO.:
5 OF 5	000022833 / 31457201000
REV	