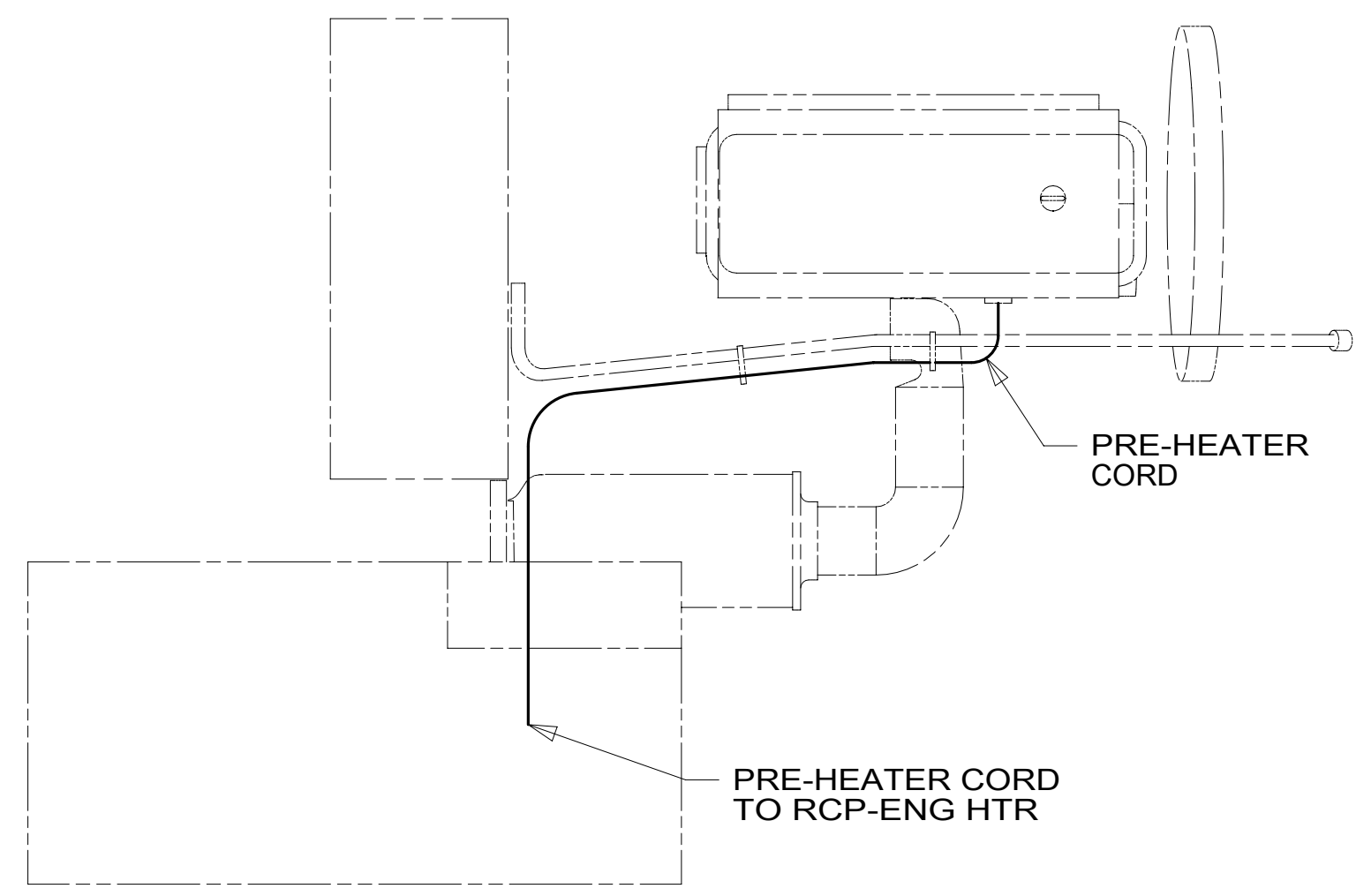


- 6 CLAMP 83610-01-000, SCREW G39-08-12B
- 5 CLAMP 10497-03-000, SCREW G39-08-12B
- 4 USE TIE-WIRE 8343-04-000 TO SECURE WIRES TO FLOOR SUPPORT FRAME AT LEAST ONCE EVERY 600MM.
- 3 SECURE CORD AWAY FROM ALL MOVING PARTS AND EXHAUST WITH WIRE-TIE 93147-01-000 AS REQUIRED
- 2 SEE WIRING INSTL-FRONT END FOR ADDITIONAL INFORMATION.
- 1 REST WIRE IN FRAME RAIL WHEN APPLICABLE.

NOTES:



DETAIL AA 3

FOR ELECTRICAL TORQUE SPECIFICATIONS SEE DWG NO. 128783-01-000

FOR ELECTRICAL CALLOUTS SEE DWG NO. 121339-01-000

- 265 CODES/STANDARDS-CSA/CMVSS
- 1B1 CODES/STANDARDS USA

- 1B1 265

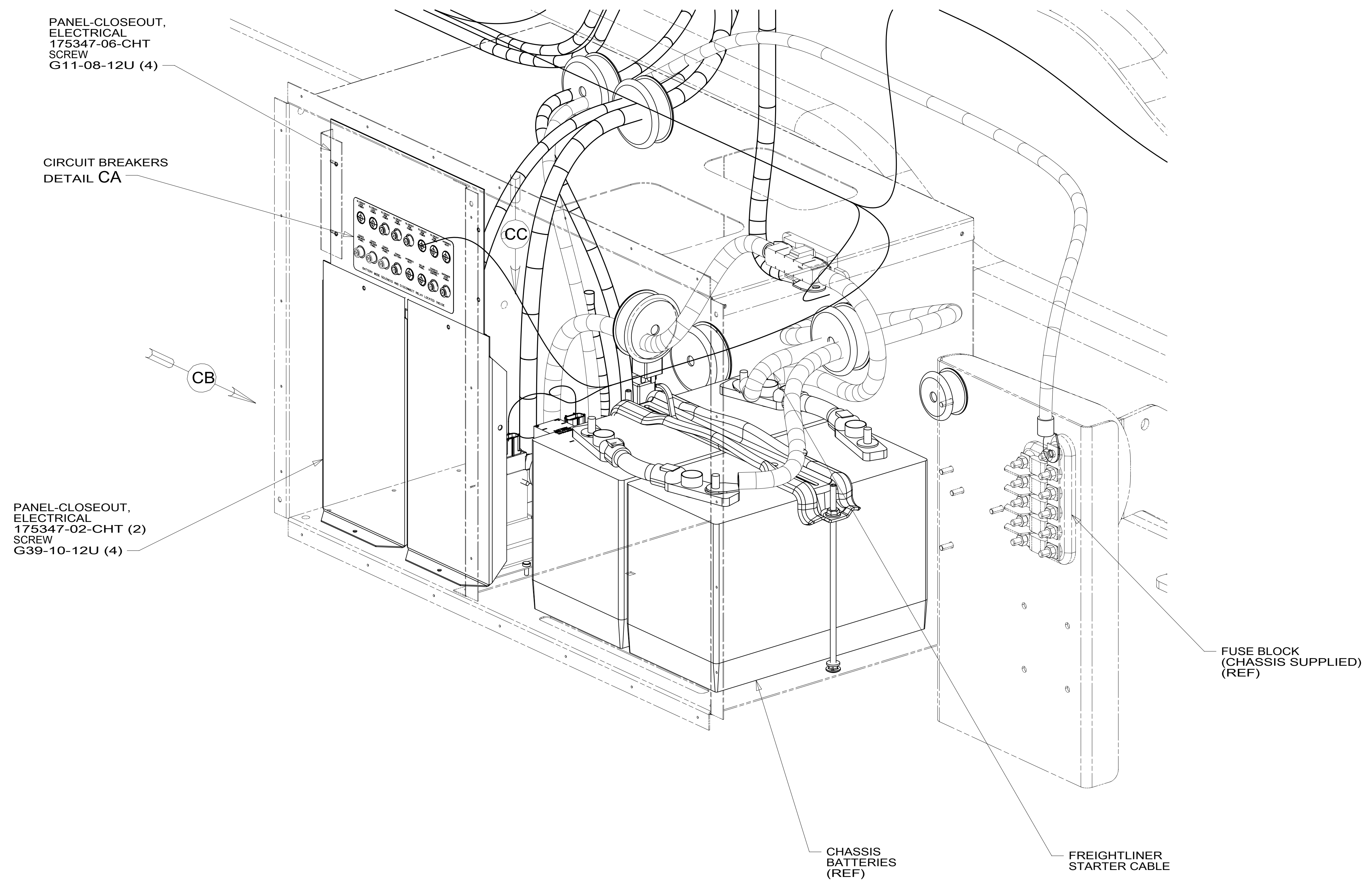


DSNR:	ALL DIMENSIONS ARE IN MILLIMETERS	
DFFR:	MATERIAL:	
UNSPECIFIED TOLERANCES:	WHOLE DIM (X) :	3
	ONE-PLACE (X.X) :	1.5
	TWO-PLACE (X.XX) :	0.50
	ANGLE :	1°
REFER TO ES0018 FOR FASTENER TIGHTENING GUIDELINES	WEIGHT: (LBS)	FIRST USED:
		17 L36G

DESCRIPTION:		
<b>WIRING INSTL-CHASSIS</b>		
SHEET:	ITEM/PART NO.:	REV:
1 OF 4	000022815 / 31456401000	

8 7 6 5 4 3 2 1

D  
C  
B  
A



VIEW BA

265 CODES/STANDARDS-CSA/CMVSS  
 1B1 CODES/STANDARDS USA

FOR ELECTRICAL TORQUE SPECIFICATIONS SEE DWG NO. 128783-01-000

X-X FOR ELECTRICAL CALLOUTS SEE DWG NO. 121339-01-000

DESCRIPTION:		1B1 265
<b>WIRING INSTL-CHASSIS</b>		
SHEET:	ITEM/PART NO.:	REV
2 OF 4	000022815 / 31456401000	

8 7 6 5 4 3 2 1 19-Dec-2016

8 7 6 5 4 3 2 1

D

C

B

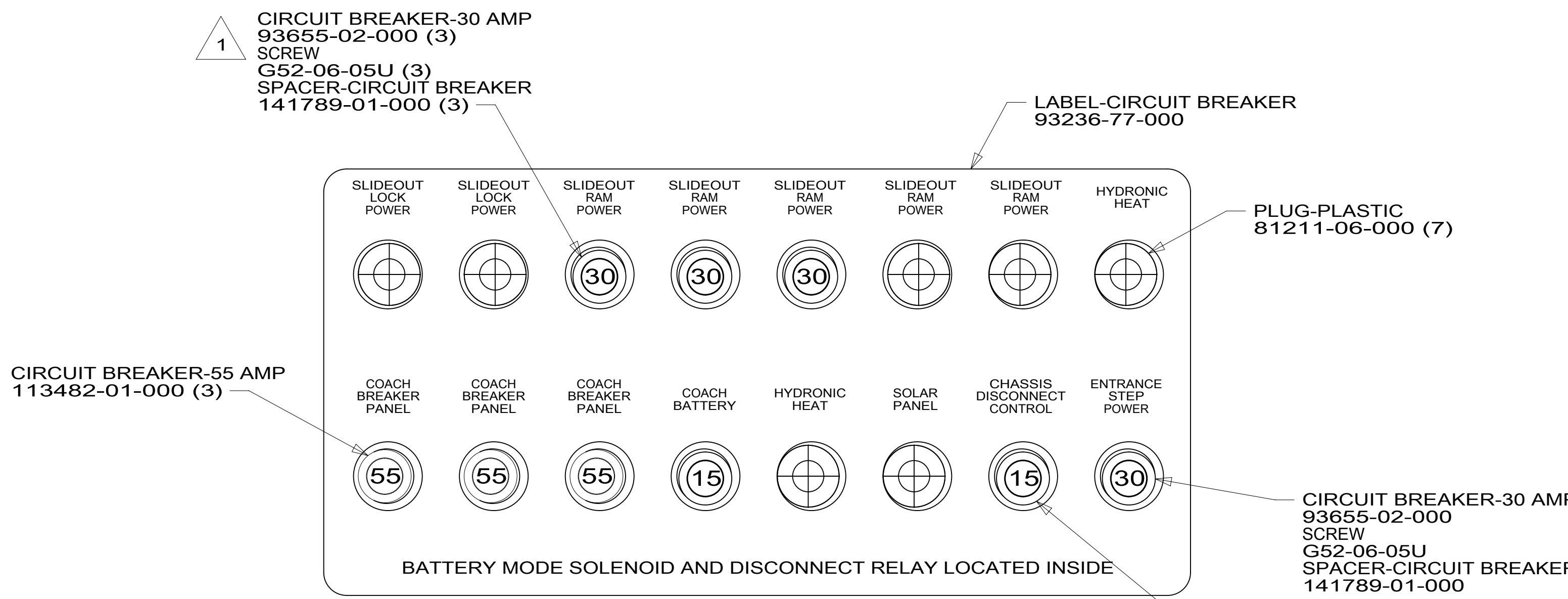
A

D

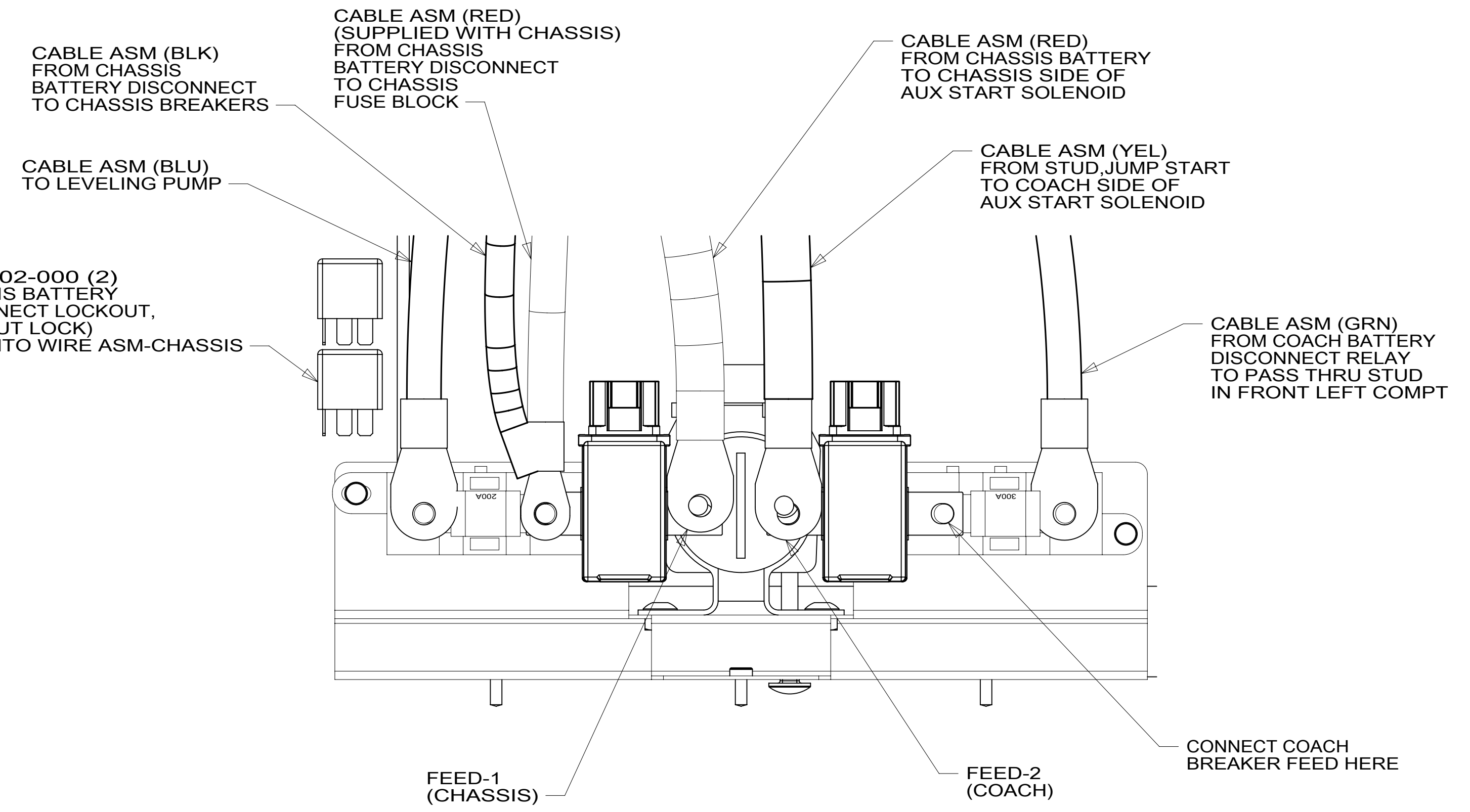
C

B

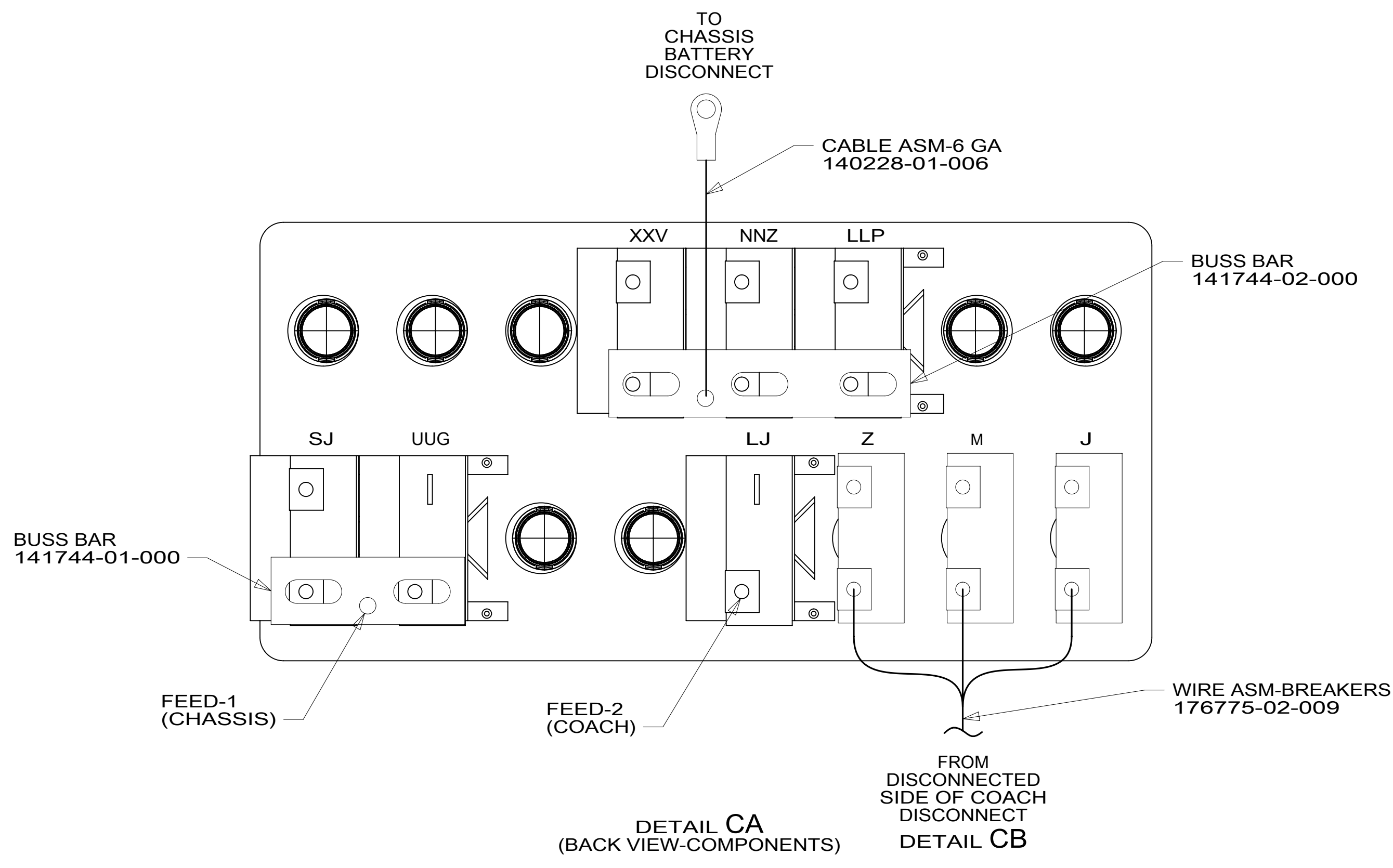
A



DETAIL CA

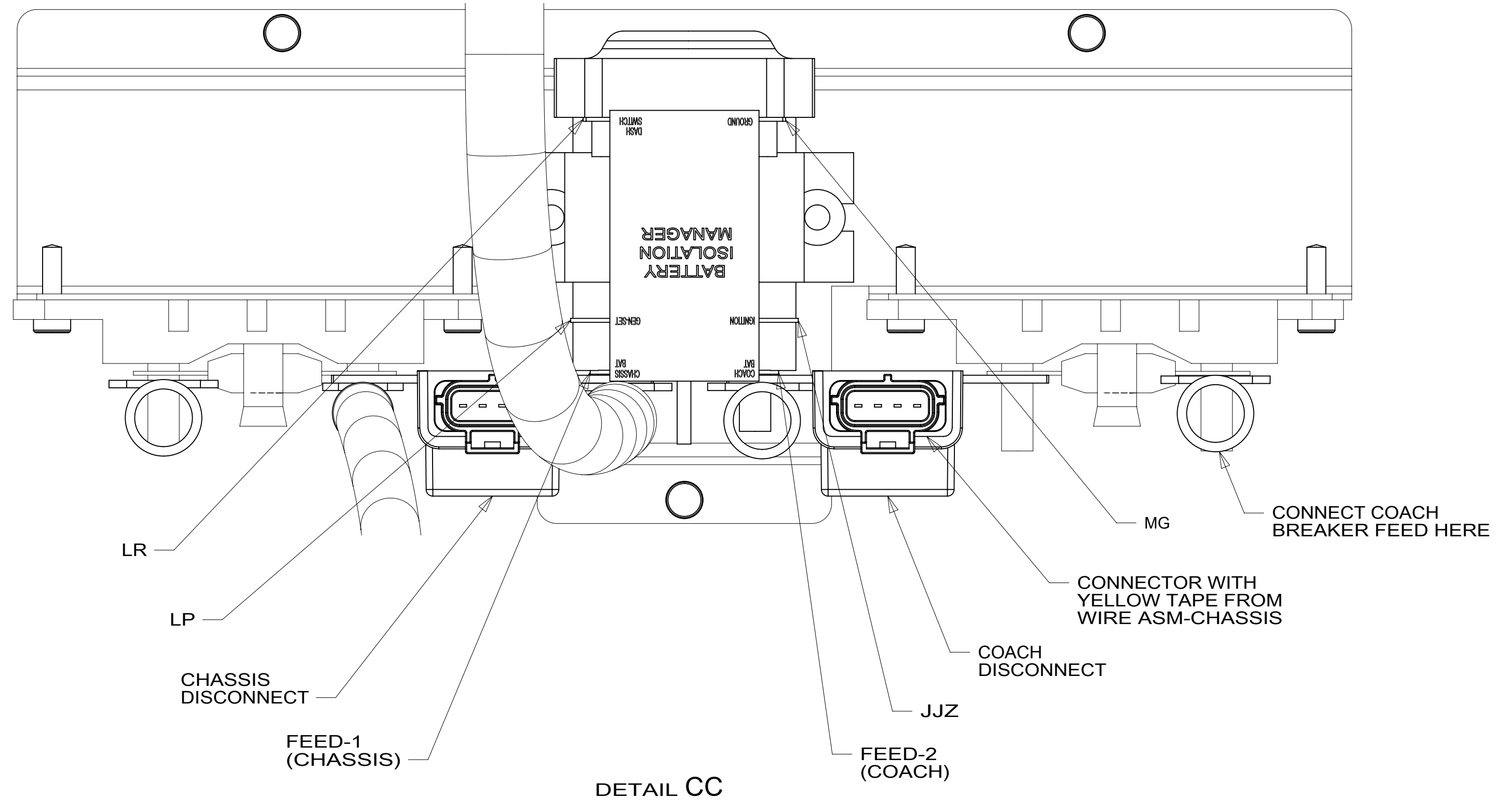


VIEW CB



DETAIL CA (BACK VIEW-COMPONENTS)

DETAIL CB



DETAIL CC

1 REPLACE EXISTING SCREW TO PROPERLY ATTACH BREAKER TO BUSS BAR.

NOTES:

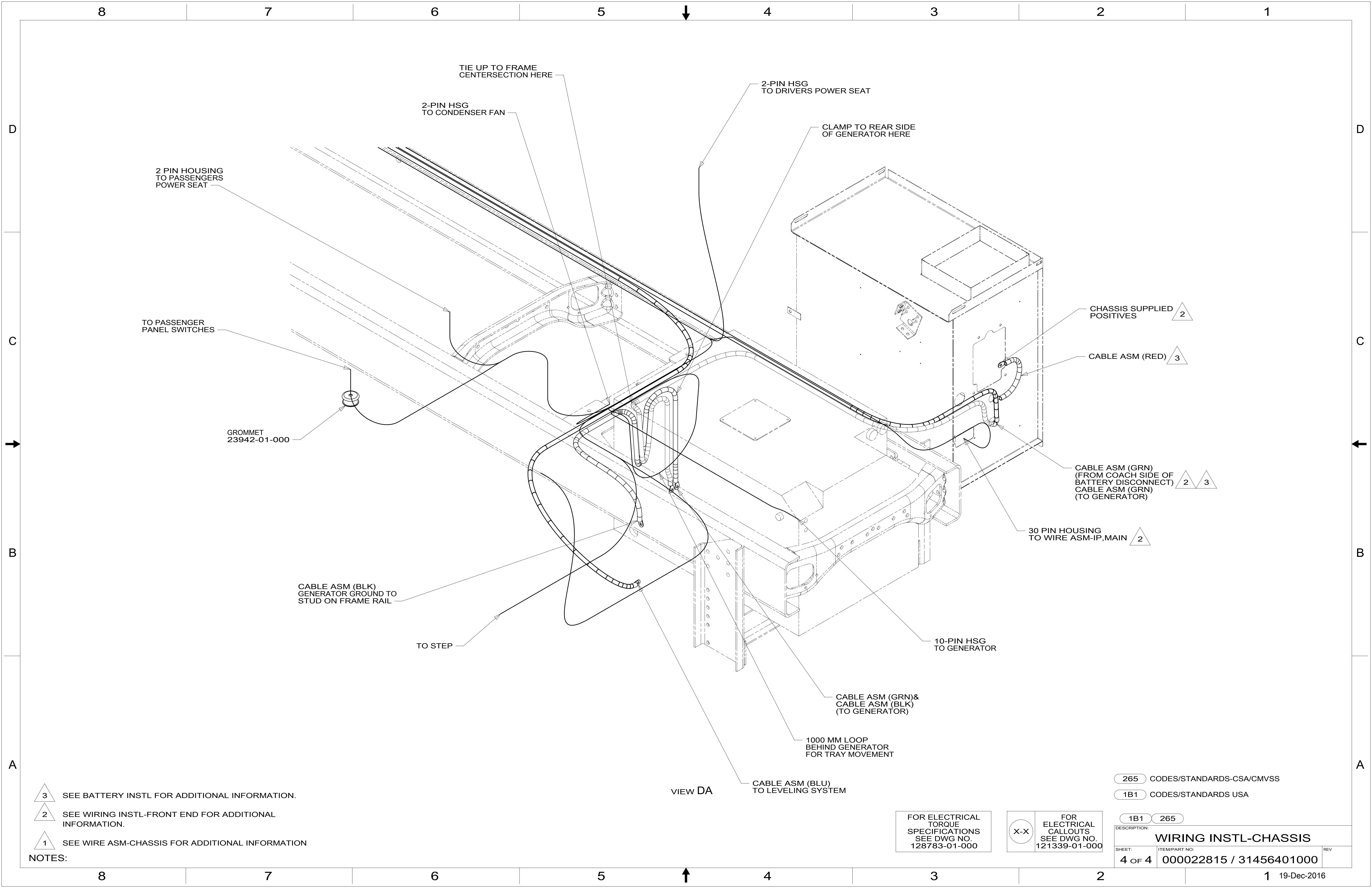
FOR ELECTRICAL TORQUE SPECIFICATIONS SEE DWG NO. 128783-01-000

X-X FOR ELECTRICAL CALLOUTS SEE DWG NO. 121339-01-000

265 CODES/STANDARDS-CSA/CMVSS  
1B1 CODES/STANDARDS USA

DESCRIPTION:	1B1 265	
<b>WIRING INSTL-CHASSIS</b>		
SHEET:	ITEM/PART NO.:	REV
3 OF 4	000022815 / 31456401000	

8 7 6 5 4 3 2 1



- NOTES:
- 3 SEE BATTERY INSTL FOR ADDITIONAL INFORMATION.
  - 2 SEE WIRING INSTL-FRONT END FOR ADDITIONAL INFORMATION.
  - 1 SEE WIRE ASM-CHASSIS FOR ADDITIONAL INFORMATION

FOR ELECTRICAL TORQUE SPECIFICATIONS SEE DWG NO. 128783-01-000

FOR ELECTRICAL CALLOUTS SEE DWG NO. 121339-01-000

265 CODES/STANDARDS-CSA/CMVSS  
 1B1 CODES/STANDARDS USA

DESCRIPTION:		1B1	265
<b>WIRING INSTL-CHASSIS</b>			
SHEET:	ITEM/PART NO.:	REV	
4 OF 4	000022815 / 31456401000		