

8 7 6 5 4 3 2 1

D

D

C

C

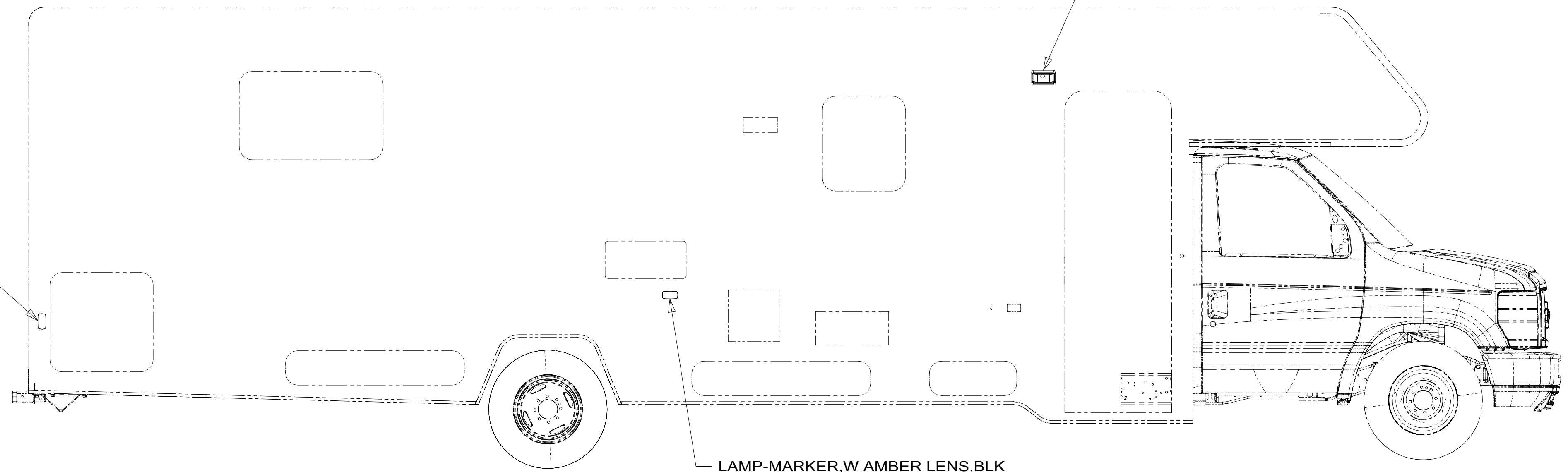
B

B

A

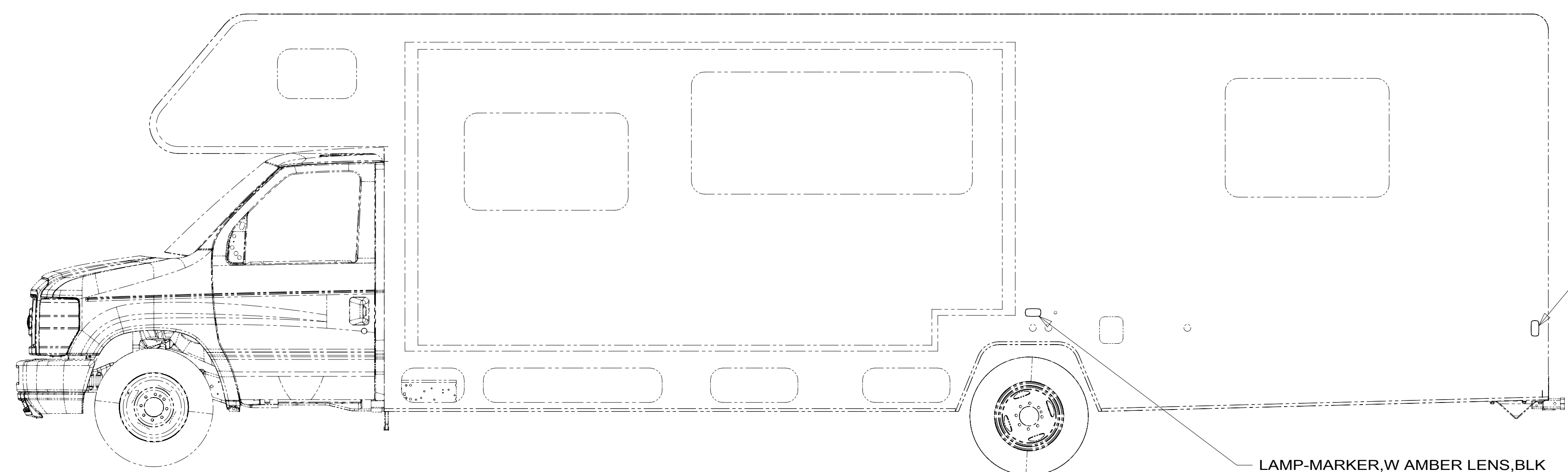
A

LAMP-MARKER,W RED LENS,BLK  
193802-04-000  
SCREW  
G11-08-12U (EXT) (2)



LAMP-MARKER,W AMBER LENS,BLK  
193802-03-000  
SCREW  
G11-08-12U (EXT) (2)  
CONNECTOR  
58028-01-000 (2)

LEXT-1



LAMP-MARKER,W RED LENS,BLK  
193802-04-000  
SCREW  
G11-08-12U (EXT) (2)

LAMP-MARKER,W AMBER LENS,BLK  
193802-03-000  
SCREW  
G11-08-12U (EXT) (2)  
CONNECTOR  
58028-01-000 (2)

265 CODES/STANDARDS-CSA/CMVSS

1B1 CODES/STANDARDS USA

1B1 265



DSNR:		ALL DIMENSIONS ARE IN MILLIMETERS	
DFFR:		MATERIAL:	
UNSPECIFIED TOLERANCES:			
WHOLE DIM (X)	: 3		
ONE-PLACE (X.X)	: 1.5		
TWO-PLACE (X.XX)	: 0.50		
ANGLE	: 1°		

REFER TO ES0018 FOR FASTENER TIGHTENING GUIDELINES

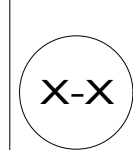
WEIGHT: (LBS) FIRST USED: 17 331K

DESCRIPTION: WIRING INSTL-EXTERIOR LAMPS

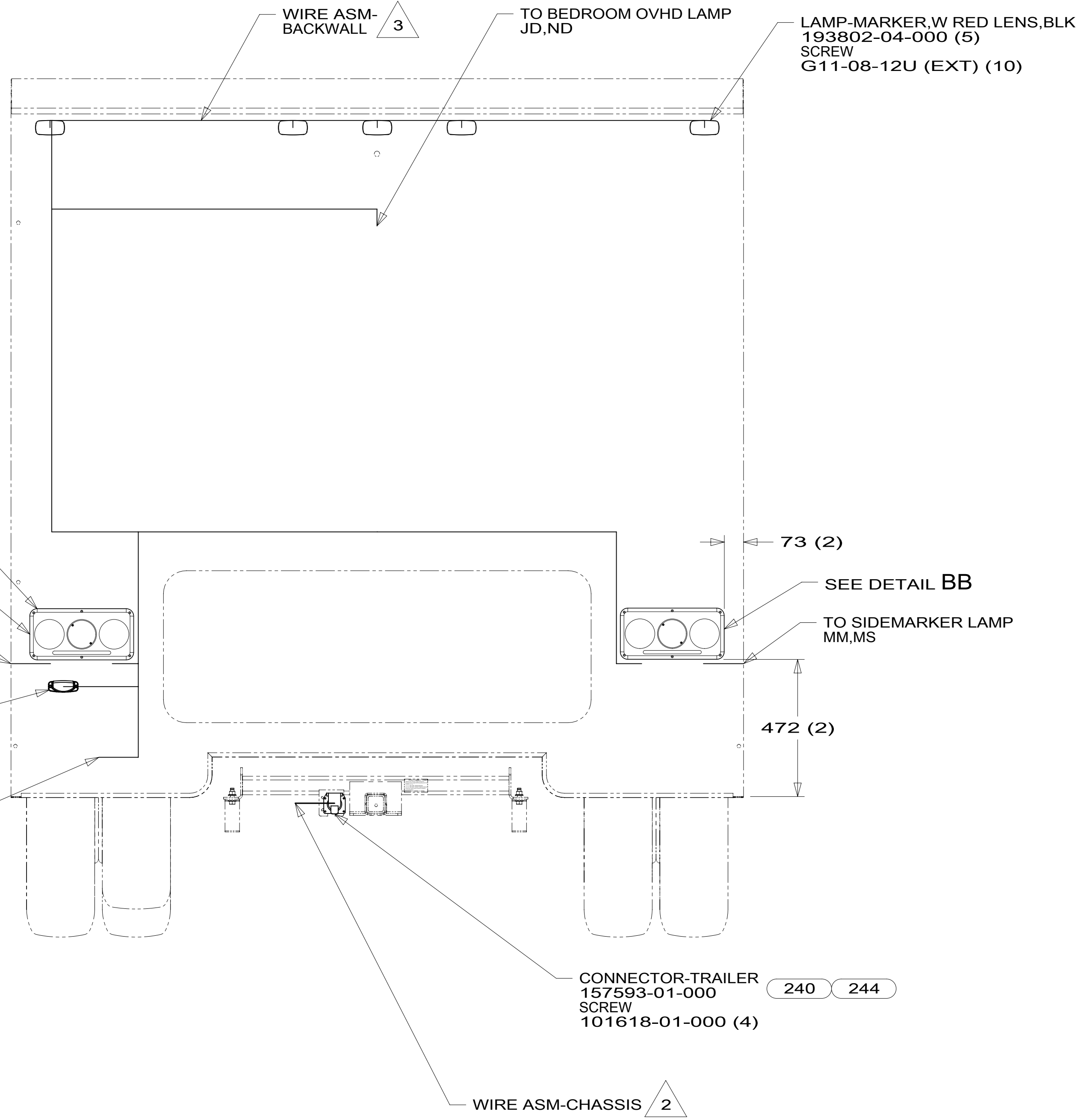
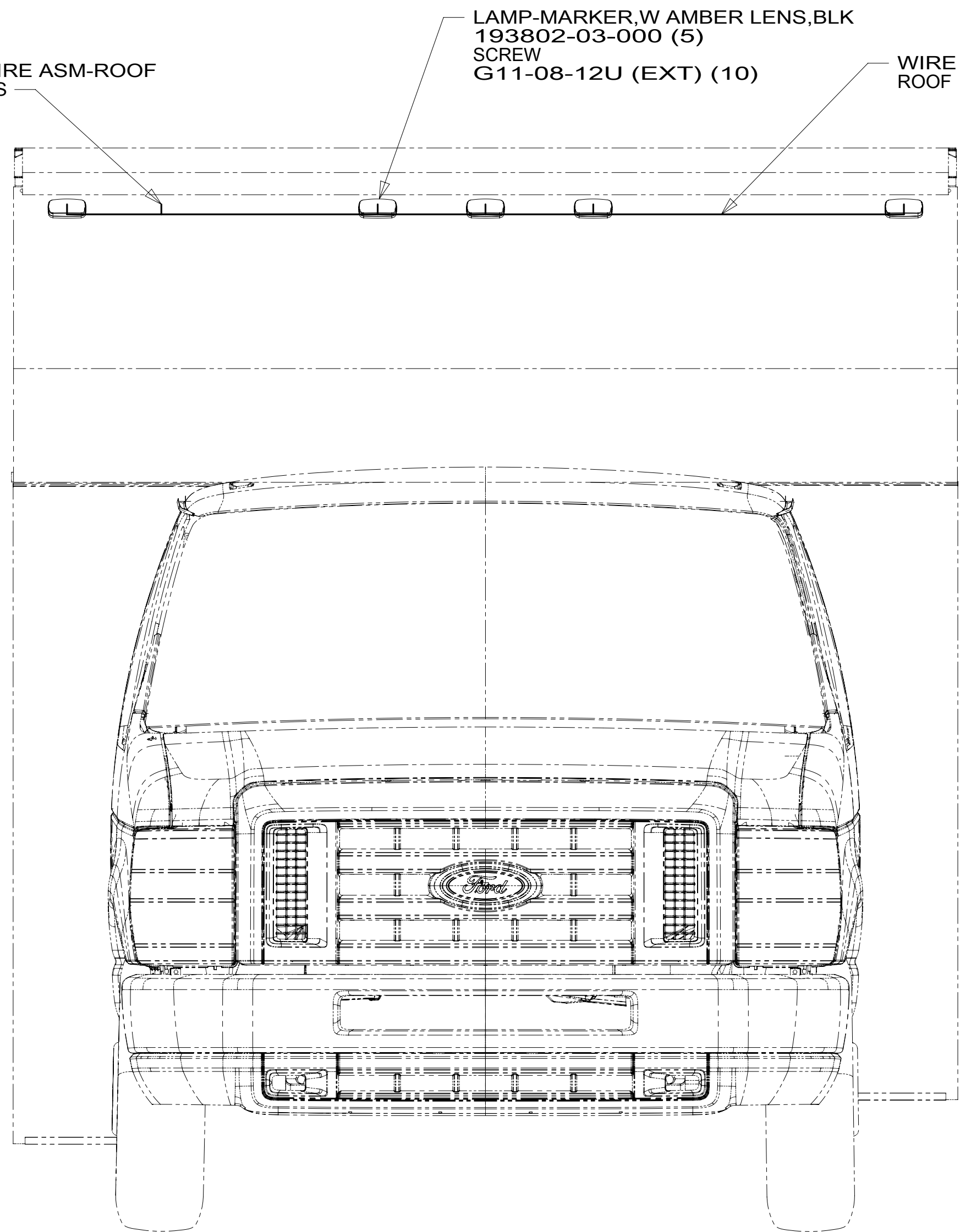
SHEET: 1 OF 2 ITEM/PART NO: 000022659 / 31451601000 REV

FOR ELECTRICAL TORQUE SPECIFICATIONS SEE DWG NO. 128783-01-000

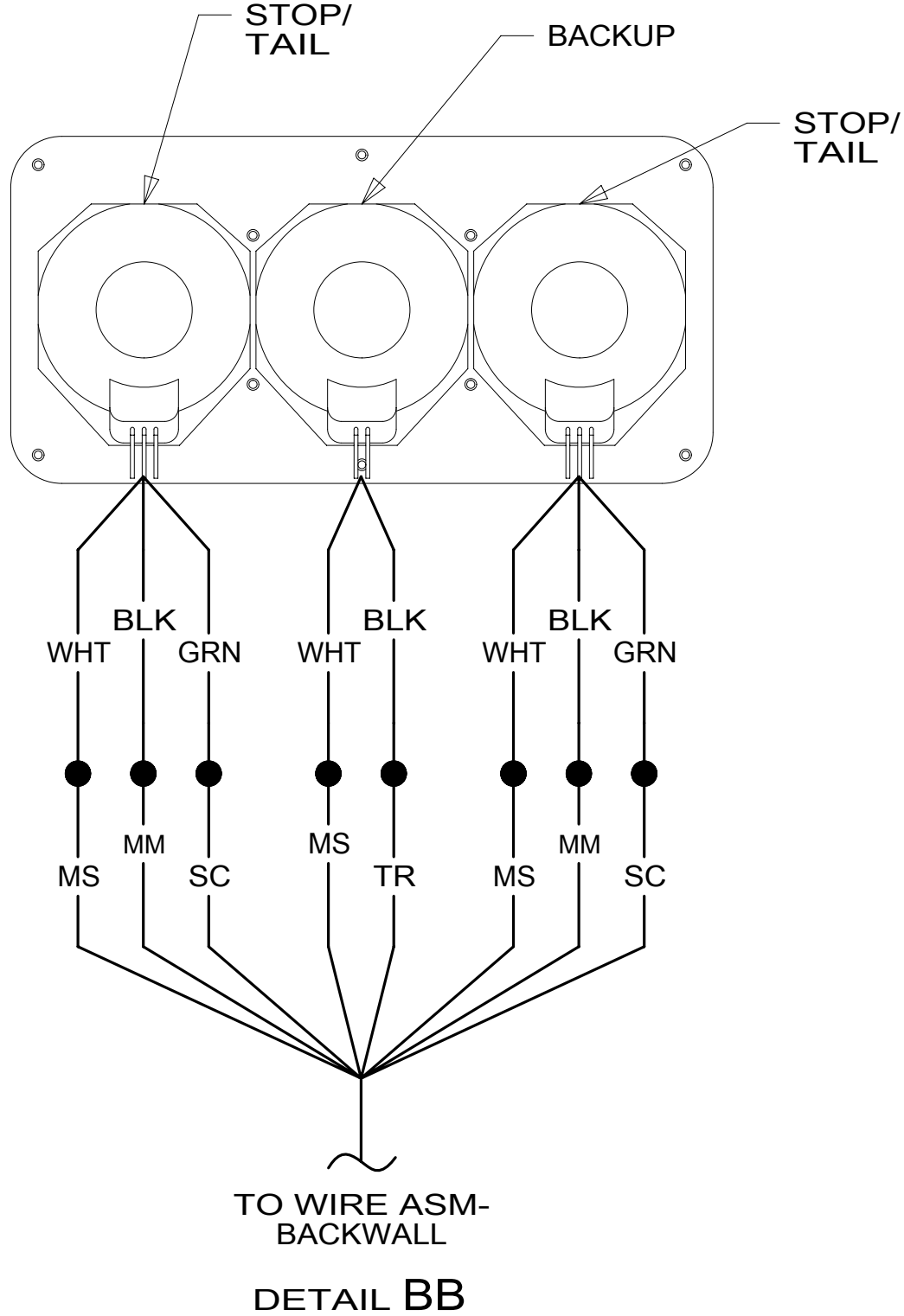
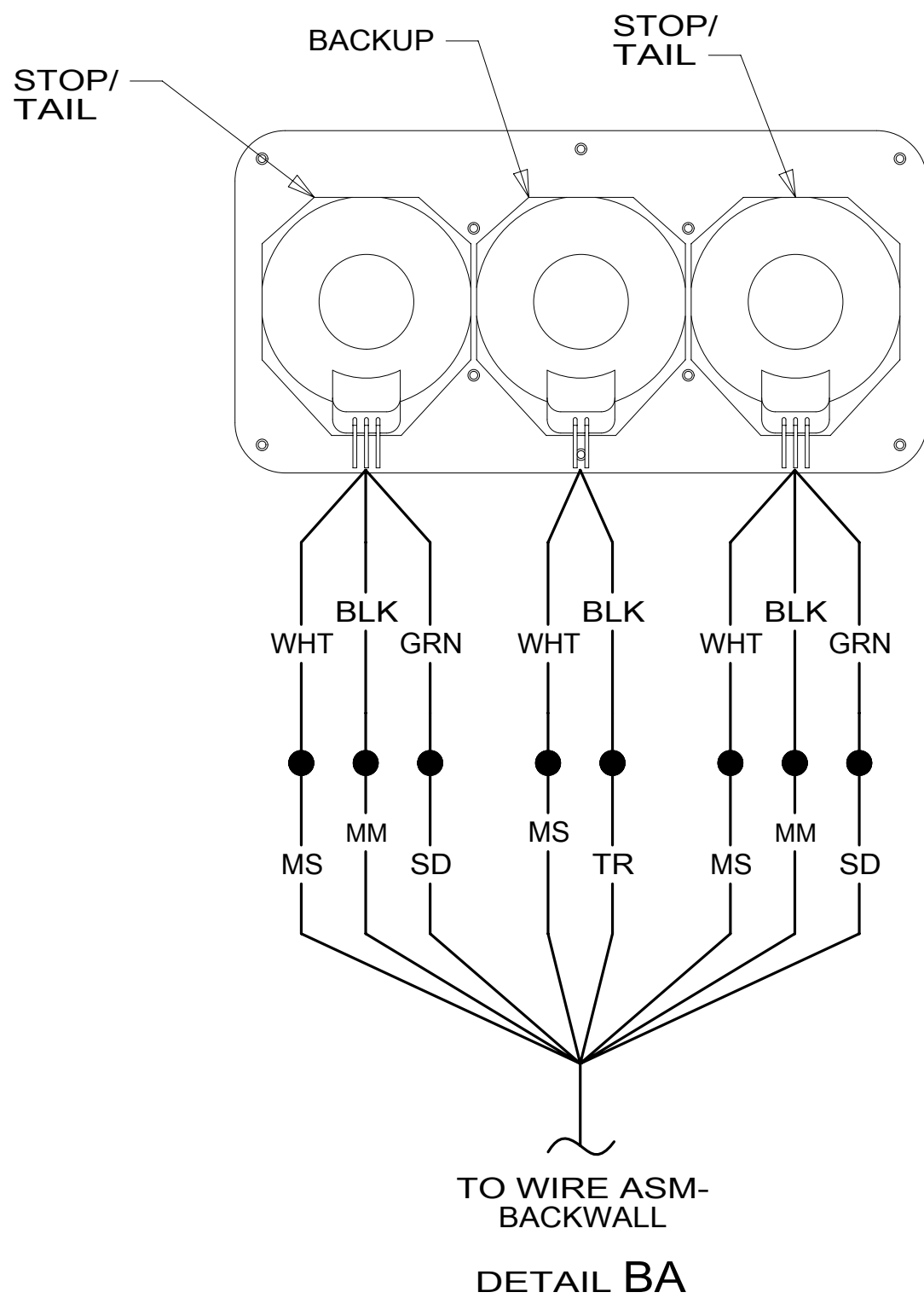
FOR ELECTRICAL CALLOUTS SEE DWG NO. 121339-01-000



8 7 6 5 4 3 2 1



- 4 5 LAMP ASM-STOP/TURN/TAIL/BACKUP  
183787-01-000 (2)  
SCREW  
G11-07-12U (12)  
CONNECTOR  
58028-01-000 (8)
- SEE DETAIL BA
- TO SIDEMARKER LAMP MM,MS
- BRACKET-LICENSE  
66432-03-000  
SCREW  
G67-10-129 (2)  
LIGHT-LICENSE  
66432-02-000  
SCREW  
G39-08-12T (EXT) (2)  
CONNECTOR  
58028-01-000 (2)
- 8-PIN HOUSING TO WIRE ASM-CHASSIS



- 5 APPLY SILICONE ACROSS TOP AND DOWN SIDES WITH FEATURE 64 TRIM GASKET AS NECESSARY.
- 4 TAIL LAMP MUST BE INSTALLED WITH WIRES DOWN.
- 3 LOCATED IN BACKWALL ASSEMBLY.
- 2 SECURE WIRE BELOW COACH WITH CLAMP 10495-01-000 AND SCREW G67-10-12B.
- 1 LOCATED IN ROOF ASSEMBLY FRONT.

- 244 TRAILER HITCH-7500# DRAW BAR
- 644 GREAT ALASKAN RENTAL PACKAGE
- 240 TRAILER HITCH
- 265 CODES/STANDARDS-CSA/CMVSS
- 1B1 CODES/STANDARDS USA

FOR ELECTRICAL TORQUE SPECIFICATIONS SEE DWG NO. 128783-01-000

FOR ELECTRICAL CALLOUTS SEE DWG NO. 121339-01-000

DESCRIPTION:	1B1 265	
<b>WIRING INSTL-EXTERIOR LAMPS</b>		
SHEET:	ITEM/PART NO:	REV
2 OF 2	000022659 / 31451601000	