



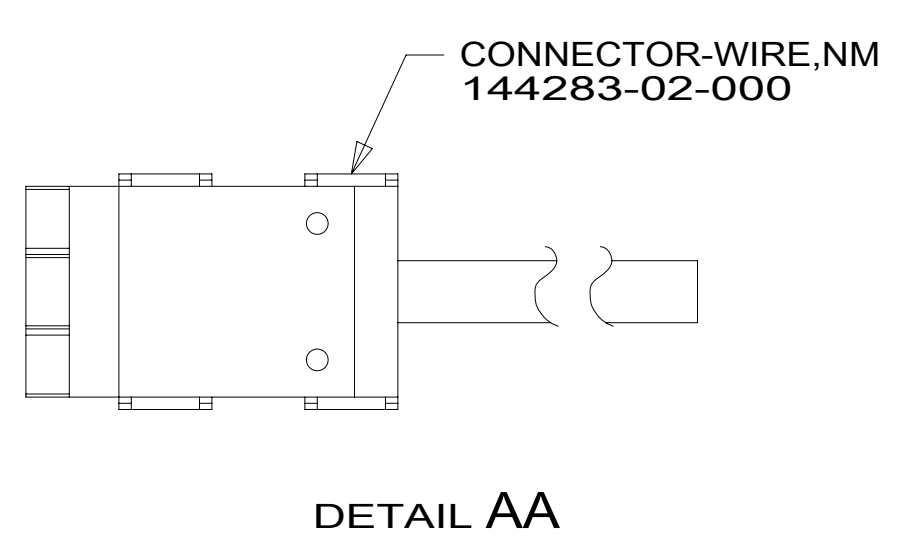
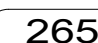


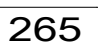
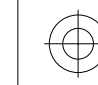


RED	1B1	136135-07-034
	265	136136-07-034
YEL	1B1	136131-05-018 
	265	136134-05-018 
BLK	1B1	136135-06-018
	265	136136-06-018
BRN	1B1	136131-03-039
	265	136134-03-039
BLU	1B1	136131-02-131
	265	136134-02-131
MAIN	1B1	136137-01-074
	265	136138-01-074
BLK-2	1B1	136135-22-006
	265	136136-22-006
WHT	1B1	136135-09-025
	265	136136-09-025
THROW IN WIRE #1	1B1	136131-05-010 
	265	136134-05-010 
THROW IN WIRE #3	1B1	136131-02-028
	265	136134-02-028
CONVERTER FEED POS		174023-01-000 (1400 MM)
CONVERTER FEED NEG		174023-02-000 (1400 MM)



 CODES/STANDARDS-CSA/CMVSS  
 CODES/STANDARDS USA  
 

**WINNEBAGO**  
 COPYRIGHT 2016 WINNEBAGO INDUSTRIES, INC.

DSNR: \_\_\_\_\_ ALL DIMENSIONS ARE IN MILLIMETERS 

DIFFR: \_\_\_\_\_

UNSPECIFIED TOLERANCES:	MATERIAL:
WHOLE DIM (X) : 3	
ONE-PLACE (X.X) : 1.5	
TWO-PLACE (X.XX) : 0.50	
ANGLE : 1°	

REFER TO ES0018 FOR FASTENER TIGHTENING GUIDELINES

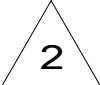
WEIGHT: (LBS) \_\_\_\_\_ FIRST USED: **17 423A**

DESCRIPTION: **LOAD CENTER/ATS ASM**

SHEET: **1 OF 3** ITEM/PART NO: **000022583 / 31449001000** REF: \_\_\_\_\_ REV: \_\_\_\_\_

FOR ELECTRICAL TORQUE SPECIFICATIONS SEE DWG NO. 128783-01-000

FOR ELECTRICAL CALLOUTS SEE DWG NO. 121339-01-000

 FOR CONNECTOR INSTALLATION, SEE DETAIL AA.

NOTES:  
 1. ALL GROUND WIRES TO BE COVERED WITH TUBING 8041-02-000.

8 7 6 5 4 3 2 1

D

D

C

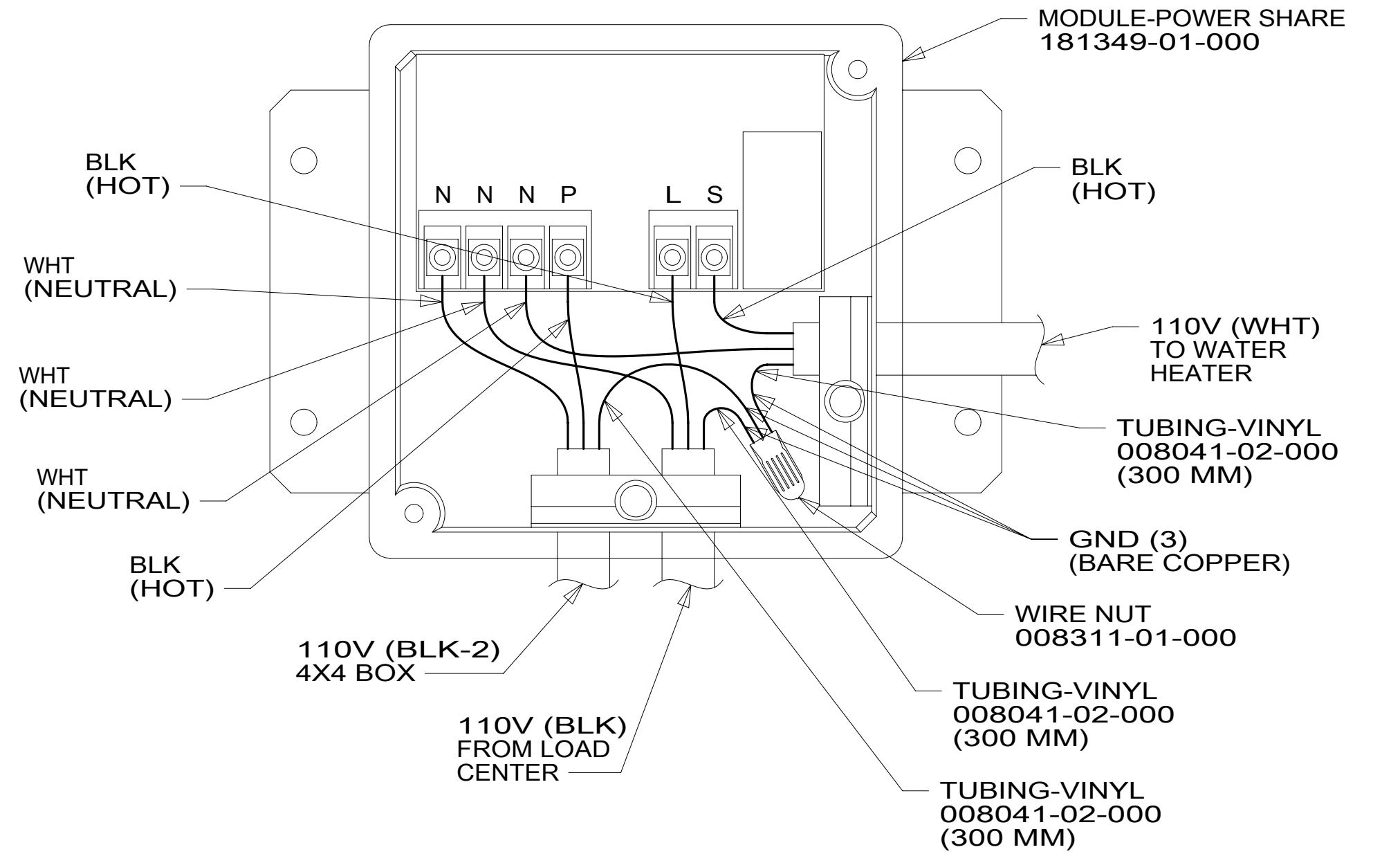
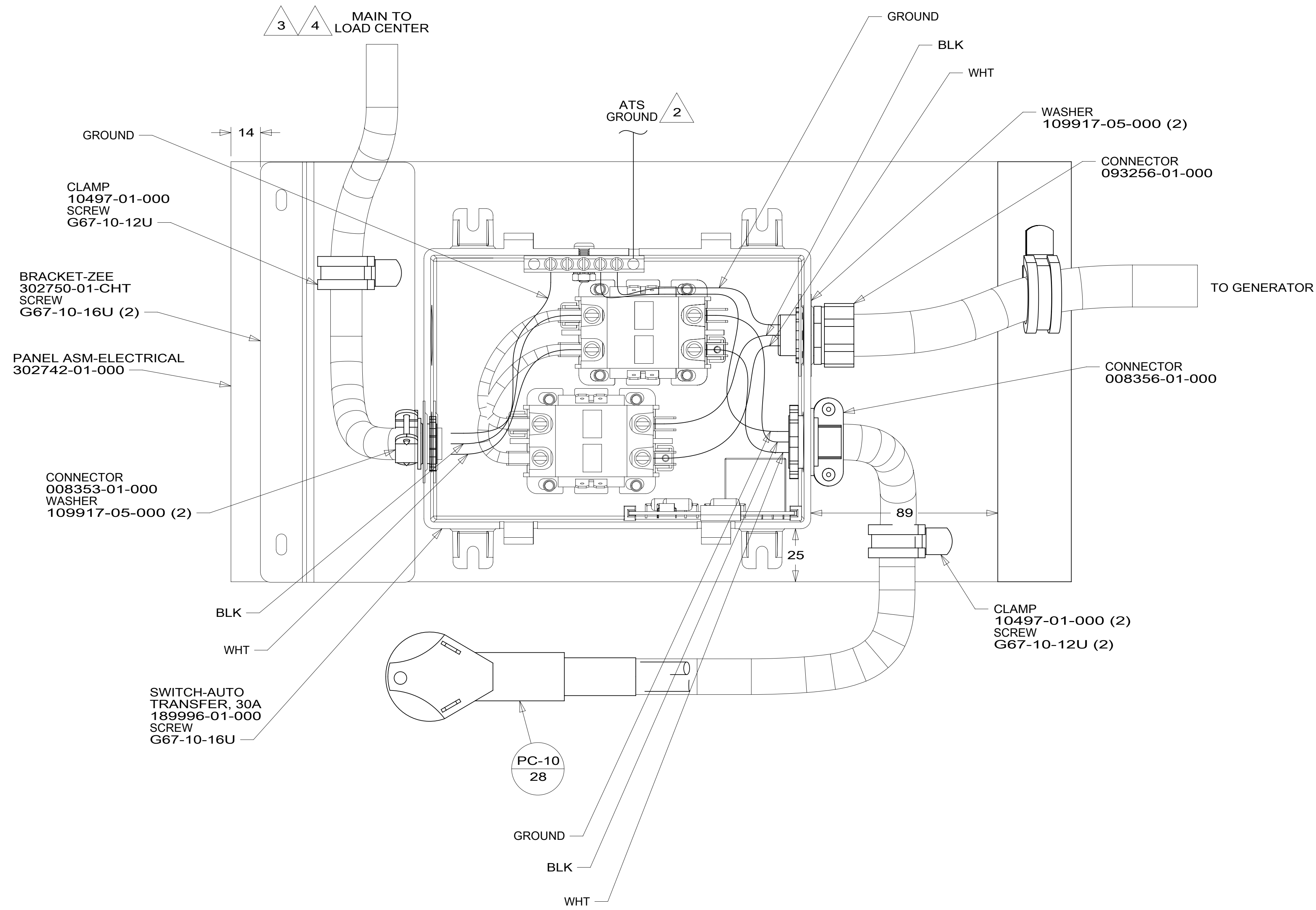
C

B

B

A

A



- 4 SEE SH1 FOR ADDITIONAL INFORMATION.
- 3 SEE WIRING INSTL-BODY, 110V FOR ADDITIONAL INFORMATION.
- 2 SEE WIRING INSTL-CHASSIS FOR ADDITIONAL INFORMATION.

1. ALL GROUND WIRES TO BE COVERED WITH TUBING 8041-02-000.

NOTES:

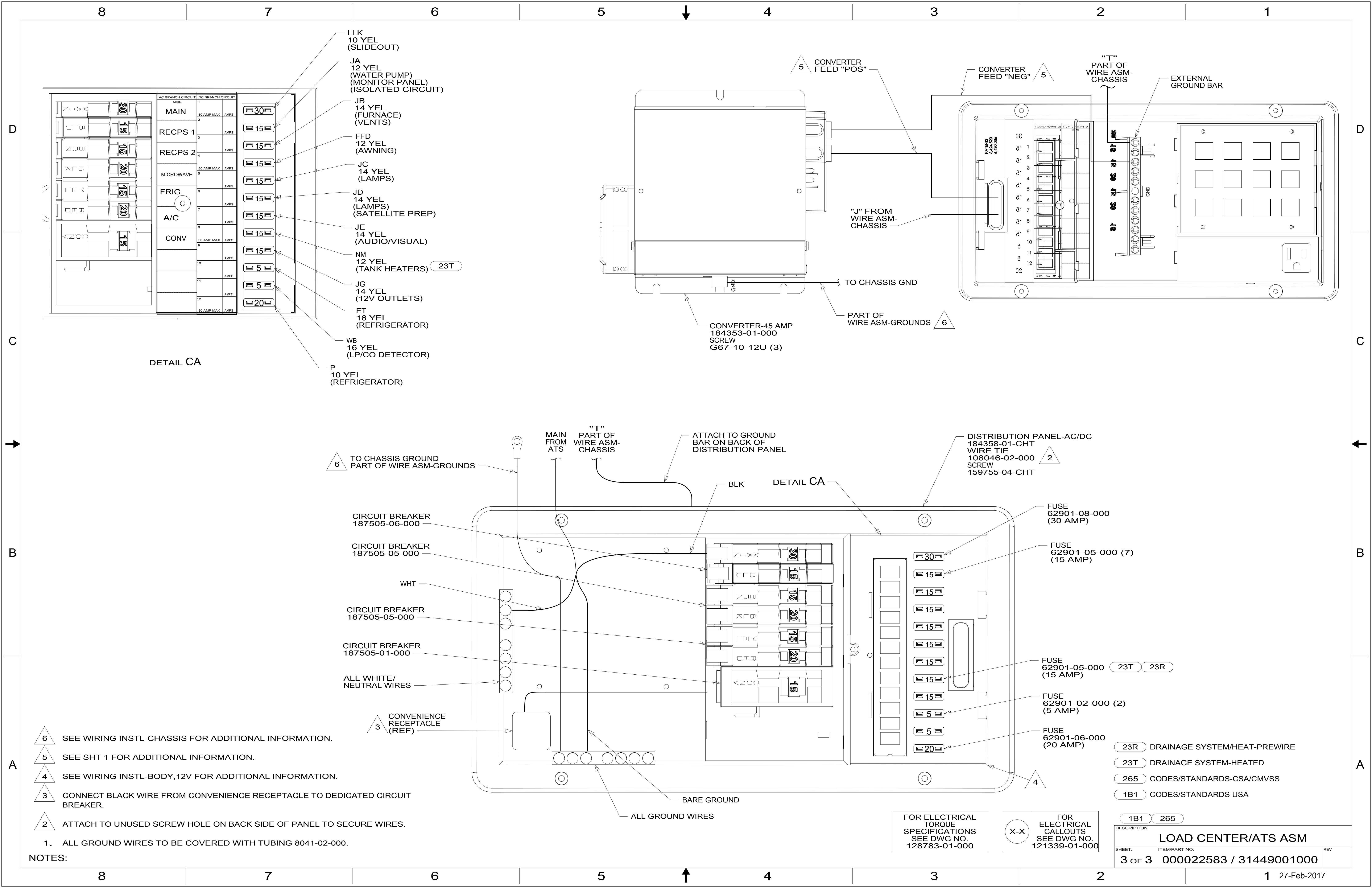
265 CODES/STANDARDS-CSA/CMVSS  
 1B1 CODES/STANDARDS USA

FOR ELECTRICAL TORQUE SPECIFICATIONS SEE DWG NO. 128783-01-000

X-X FOR ELECTRICAL CALLOUTS SEE DWG NO. 121339-01-000

DESCRIPTION:	1B1 265	
<b>LOAD CENTER/ATS ASM</b>		
SHEET:	ITEM/PART NO:	REV
2 OF 3	000022583 / 31449001000	

8 7 6 5 4 3 2 1 27-Feb-2017



- LLK 10 YEL (SLIDEOUT)
- JA 12 YEL (WATER PUMP) (MONITOR PANEL) (ISOLATED CIRCUIT)
- JB 14 YEL (FURNACE) (VENTS)
- FFD 12 YEL (AWNING)
- JC 14 YEL (LAMPS)
- JD 14 YEL (LAMPS) (SATELLITE PREP)
- JE 14 YEL (AUDIO/VISUAL)
- NM 12 YEL (TANK HEATERS) 23T
- JG 14 YEL (12V OUTLETS)
- ET 16 YEL (REFRIGERATOR)
- WB 16 YEL (LP/CO DETECTOR)
- P 10 YEL (REFRIGERATOR)

DETAIL CA

6 TO CHASSIS GROUND PART OF WIRE ASM-GROUNDS

MAIN FROM ATS

"T" PART OF WIRE ASM-CHASSIS

ATTACH TO GROUND BAR ON BACK OF DISTRIBUTION PANEL

BLK DETAIL CA

DISTRIBUTION PANEL-AC/DC 184358-01-CHT WIRE TIE 108046-02-000 SCREW 159755-04-CHT 2

CIRCUIT BREAKER 187505-06-000

CIRCUIT BREAKER 187505-05-000

WHT

CIRCUIT BREAKER 187505-05-000

CIRCUIT BREAKER 187505-01-000

ALL WHITE/NEUTRAL WIRES

3 CONVENIENCE RECEPTACLE (REF)

BARE GROUND

ALL GROUND WIRES

FUSE 62901-08-000 (30 AMP)

FUSE 62901-05-000 (7) (15 AMP)

FUSE 62901-05-000 23T 23R (15 AMP)

FUSE 62901-02-000 (2) (5 AMP)

FUSE 62901-06-000 (20 AMP)

23R DRAINAGE SYSTEM/HEAT-PREWIRE

23T DRAINAGE SYSTEM-HEATED

265 CODES/STANDARDS-CSA/CMVSS

1B1 CODES/STANDARDS USA

- 6 SEE WIRING INSTL-CHASSIS FOR ADDITIONAL INFORMATION.
- 5 SEE SHT 1 FOR ADDITIONAL INFORMATION.
- 4 SEE WIRING INSTL-BODY, 12V FOR ADDITIONAL INFORMATION.
- 3 CONNECT BLACK WIRE FROM CONVENIENCE RECEPTACLE TO DEDICATED CIRCUIT BREAKER.
- 2 ATTACH TO UNUSED SCREW HOLE ON BACK SIDE OF PANEL TO SECURE WIRES.

1. ALL GROUND WIRES TO BE COVERED WITH TUBING 8041-02-000.

NOTES:

FOR ELECTRICAL TORQUE SPECIFICATIONS SEE DWG NO. 128783-01-000

FOR ELECTRICAL CALLOUTS SEE DWG NO. 121339-01-000

1B1 265

DESCRIPTION: LOAD CENTER/ATS ASM

SHEET: 3 OF 3 ITEM/PART NO: 000022583 / 31449001000 REV