

- 6 DO NOT HI-POT INLET. LED MAY FAIL.
 - 5 LOAD CENTER AND ATAS GROUND WIRES MUST BE ATTACHED DIRECTLY TO CHASSIS GROUND.
 - 4 GROUND WIRES (8 GA WIRE) FROM LOAD CENTER AND ATAS ROUTES THROUGH FLOOR TO GROUND BOLT.
 - 3 SEE SHEET 4 FOR ADDITIONAL INFORMATION.
2. ALL 110V WIRES TO BE CLAMPED WITH CLAMP 10497-05-000 WITHIN 200MM OF OUTLET BOXES, USE SCREW G67-10-12B.
 1. AT MINIMUM ALL WIRES TO BE SUPPORTED AND SECURED PER CODE REQUIREMENTS. USE CLAMP 10495 OR 10497 OR WIRE TIE 8343 OR 108046 AND SCREW G67-XX-XXX OR G56-XX-XXX AS APPROPRIATE FOR INSTALLATION.

NOTES:

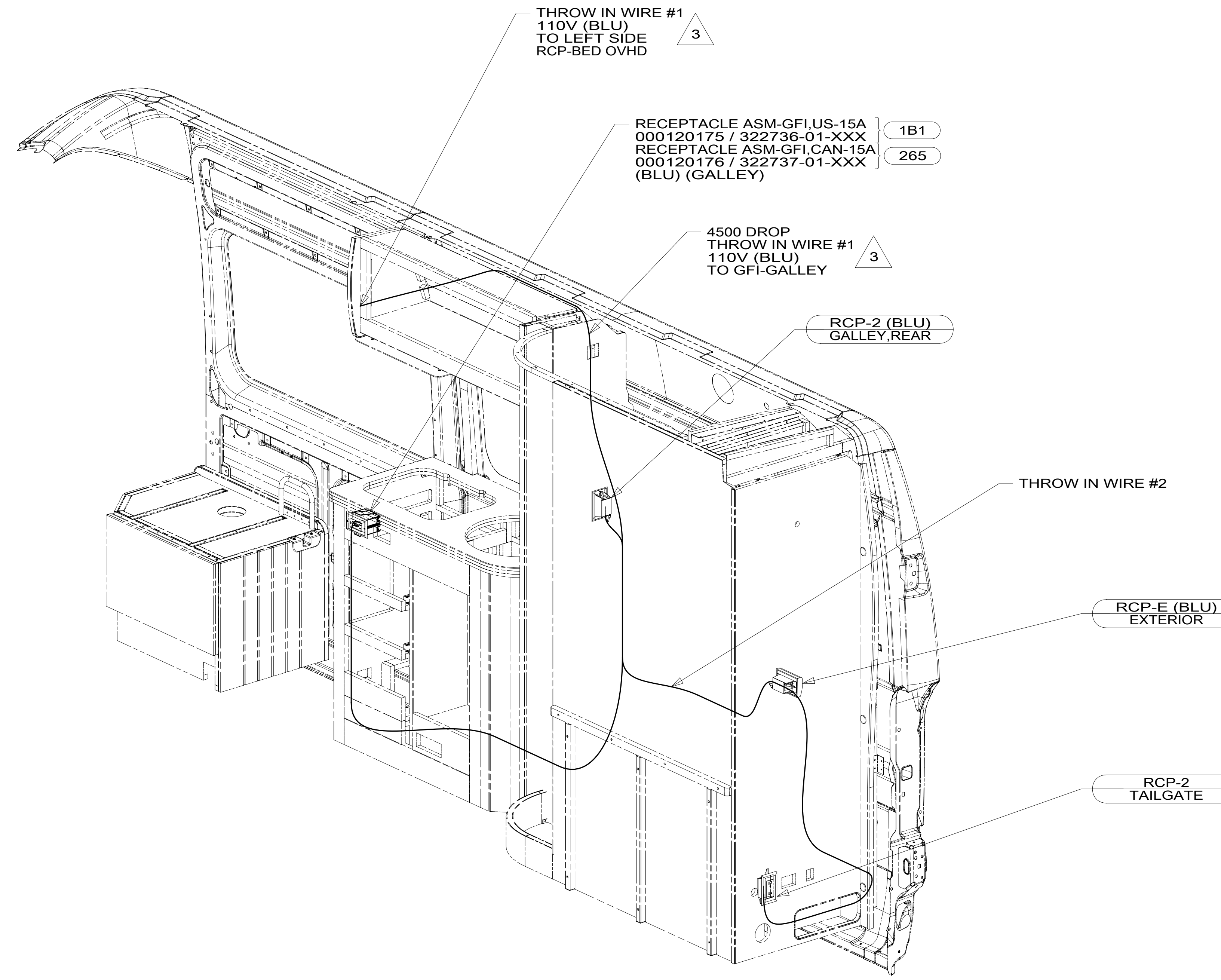
FOR ELECTRICAL TORQUE SPECIFICATIONS SEE DWG NO. 128783-01-000

FOR ELECTRICAL CALLOUTS SEE DWG NO. 121339-01-000

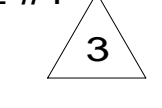
- 12D ELECTRICAL SYSTEM 30 AMP
- 265 CODES/STANDARDS-CSA/CMVSS
- 1B1 CODES/STANDARDS USA

WINNEBAGO
COPYRIGHT 2016 WINNEBAGO INDUSTRIES, INC.

DSNR:	ALL DIMENSIONS ARE IN MILLIMETERS
DFFR:	
UNSPECIFIED TOLERANCES:	MATERIAL:
WHOLE DIM (X) : 3	
ONE-PLACE (X.X) : 1.5	
TWO-PLACE (X.XX) : 0.50	
ANGLE : 1°	
REFER TO ES0018 FOR FASTENER TIGHTENING GUIDELINES	WEIGHT: (LBS) FIRST USED: 17 259G
DESCRIPTION: WIRING INSTL-BODY, 110V	
SHEET: 1 OF 4	ITEM/PART NO: 000022508 / 31446701000
REF:	REV:



THROW IN WIRE #1
110V (BLU)
TO LEFT SIDE
RCP-BED OVHD

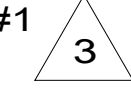


RECEPTACLE ASM-GFI,US-15A
000120175 / 322736-01-XXX
RECEPTACLE ASM-GFI,CAN-15A
000120176 / 322737-01-XXX
(BLU) (GALLEY)

1B1

265

4500 DROP
THROW IN WIRE #1
110V (BLU)
TO GFI-GALLEY



RCP-2 (BLU)
GALLEY,REAR

THROW IN WIRE #2

RCP-E (BLU)
EXTERIOR

RCP-2
TAILGATE

SEE SHEET 4 FOR ADDITIONAL INFORMATION.

2. ALL 110V WIRES TO BE CLAMPED WITH CLAMP 10497-05-000 WITHIN 200MM OF OUTLET BOXES, USE SCREW G67-10-12B.
1. AT MINIMUM ALL WIRES TO BE SUPPORTED AND SECURED PER CODE REQUIREMENTS. USE CLAMP 10495 OR 10497 OR WIRE TIE 8343 OR 108046 AND SCREW G67-XX-XXX OR G56-XX-XXX AS APPROPRIATE FOR INSTALLATION.

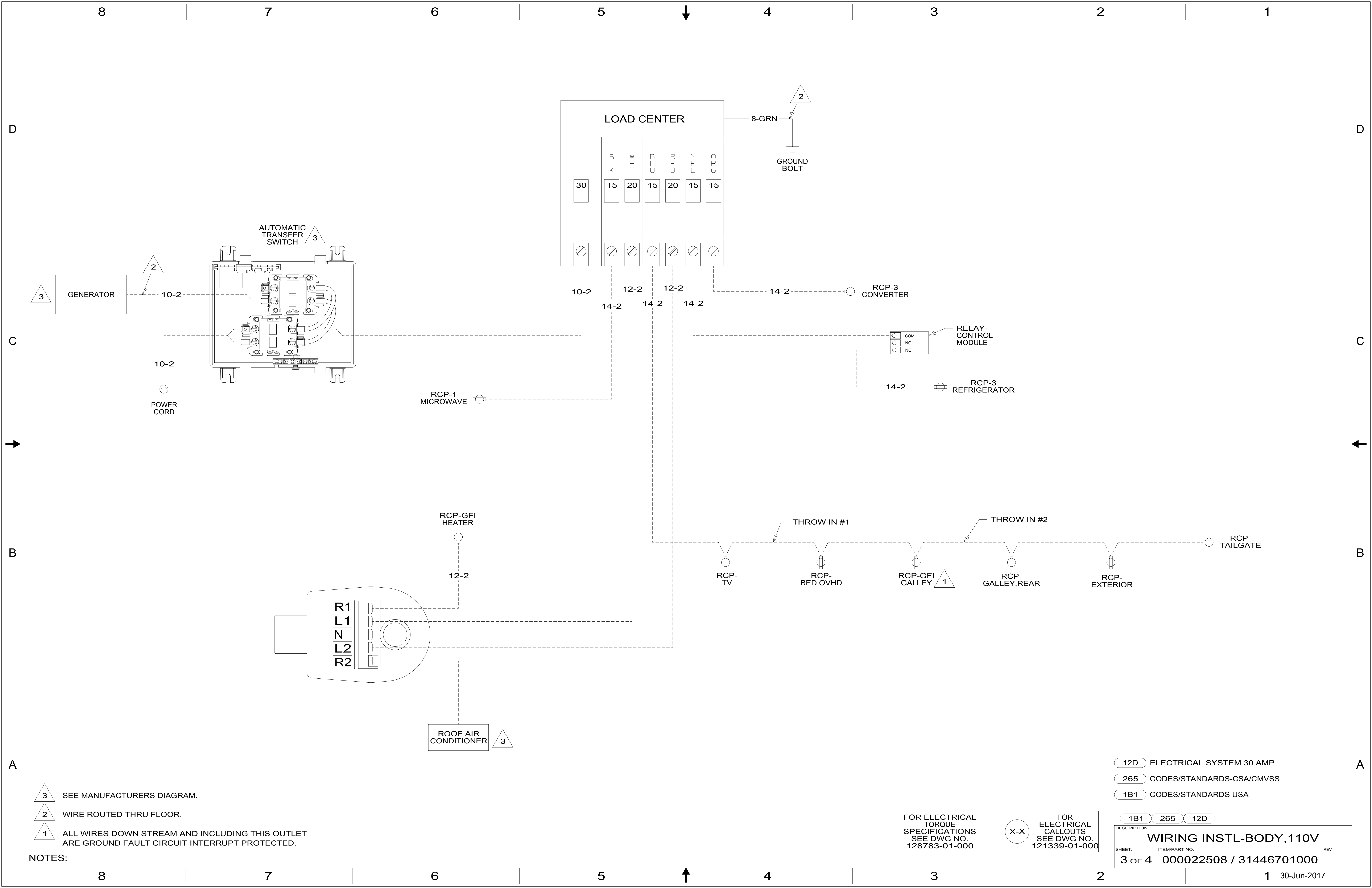
NOTES:

- ELECTRICAL SYSTEM 30 AMP
- CODES/STANDARDS-CSA/CMVSS
- CODES/STANDARDS USA

FOR ELECTRICAL
TORQUE
SPECIFICATIONS
SEE DWG NO.
128783-01-000

FOR
ELECTRICAL
CALLOUTS
SEE DWG NO.
121339-01-000

1B1	265	12D
DESCRIPTION: WIRING INSTL-BODY, 110V		
SHEET: 2 OF 4	ITEM/PART NO: 000022508 / 31446701000	REV



- NOTES:**
- 3 SEE MANUFACTURERS DIAGRAM.
 - 2 WIRE ROUTED THRU FLOOR.
 - 1 ALL WIRES DOWN STREAM AND INCLUDING THIS OUTLET ARE GROUND FAULT CIRCUIT INTERRUPT PROTECTED.

FOR ELECTRICAL TORQUE SPECIFICATIONS SEE DWG NO. 128783-01-000

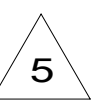
FOR ELECTRICAL CALLOUTS SEE DWG NO. 121339-01-000

- 12D ELECTRICAL SYSTEM 30 AMP
- 265 CODES/STANDARDS-CSA/CMVSS
- 1B1 CODES/STANDARDS USA

DESCRIPTION: WIRING INSTL-BODY, 110V		
SHEET: 3 OF 4	ITEM/PART NO: 000022508 / 31446701000	REV



RED	1B1	136135-07-061
	265	136136-07-061
YEL	1B1	136131-05-030
	265	136134-05-030
BLK	1B1	136131-06-045
	265	136134-06-045
BLU	1B1	136131-02-050
	265	136134-02-050
WHT	1B1	136135-09-030
	265	136136-09-030
ORG	1B1	136131-16-030
	265	136134-16-030
MAIN	1B1	136137-01-025
	265	136138-01-025
GROUND MAIN		136145-05-020
MAIN EXTENSION	1B1	136137-01-030
	265	136138-01-030
CORD-POWER ASM		183140-01-000
GROUND ATS		136145-05-020
THROW IN WIRE #1	1B1	136131-02-085
	265	136134-02-085
THROW IN WIRE #2	1B1	136131-02-070
	265	136134-02-070



D

D

C

C

B

B

A

A

- 5 DO NOT HI-POT POWER CORD, LED INDICATOR LIGHT MAY FAIL.
- 4 GROUND WIRES TO BE INSTALLED ON MFG LINE. SHIP GROUND WIRES LOOSE WITH LOAD CENTER.
- 3. SEE WIRING INSTL-BODY, 12V FOR ADDITIONAL INFORMATION.
- 2. SECURE WIRES TO BACKSIDE OF LOAD CENTER WITH WIRE TIE 116673-01-000.
- 1. ALL GROUNDS WIRES TO BE COVERED WITH TUBING 8041-02-000.

NOTES:

- 12D ELECTRICAL SYSTEM 30 AMP
- 265 CODES/STANDARDS-CSA/CMVSS
- 1B1 CODES/STANDARDS USA

FOR ELECTRICAL TORQUE SPECIFICATIONS SEE DWG NO. 128783-01-000

FOR ELECTRICAL CALLOUTS SEE DWG NO. 121339-01-000

1B1	265	12D
DESCRIPTION: WIRING INSTL-BODY, 110V		
SHEET: 4 OF 4	ITEM/PART NO: 000022508 / 31446701000	REV

