

8 7 6 5 4 3 2 1

D

D

C

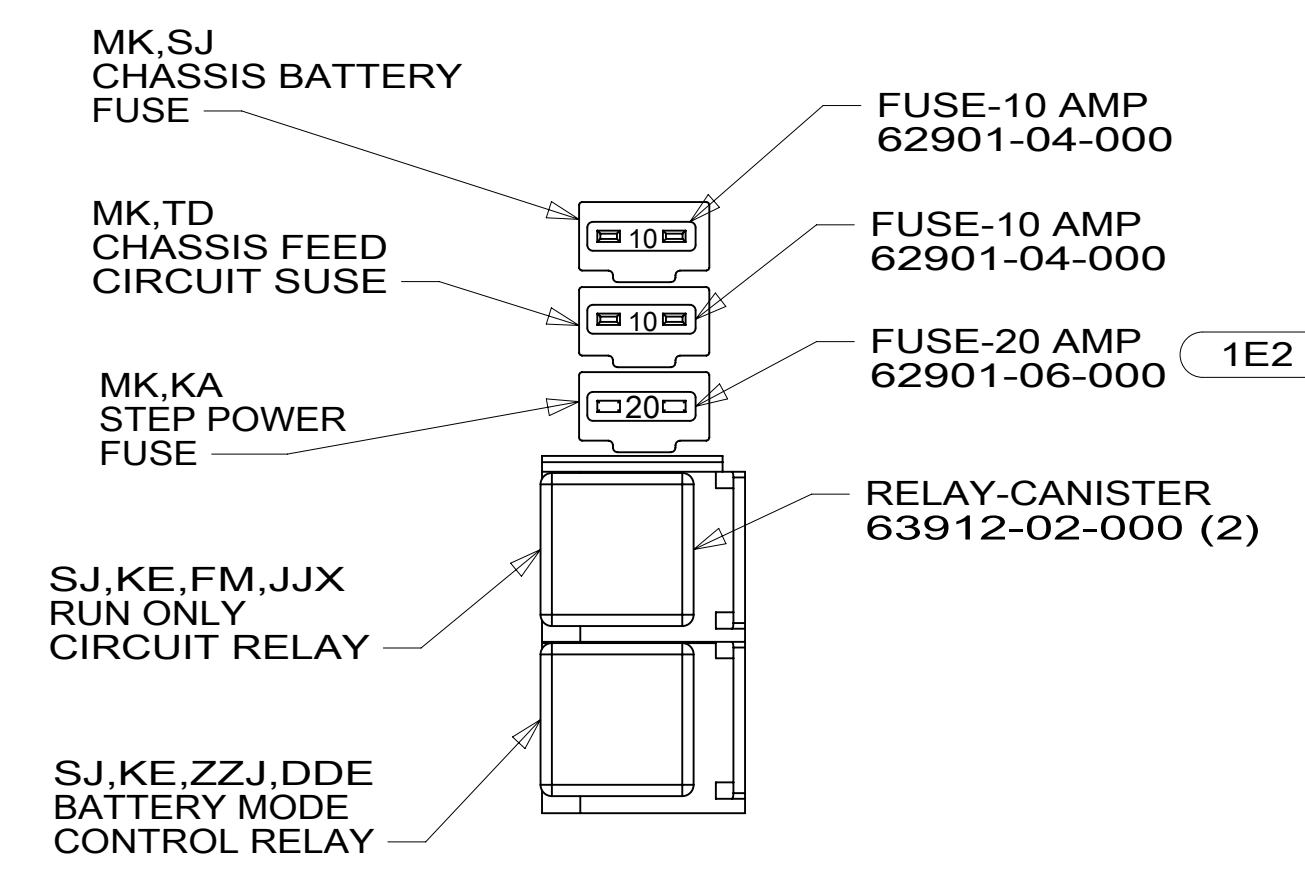
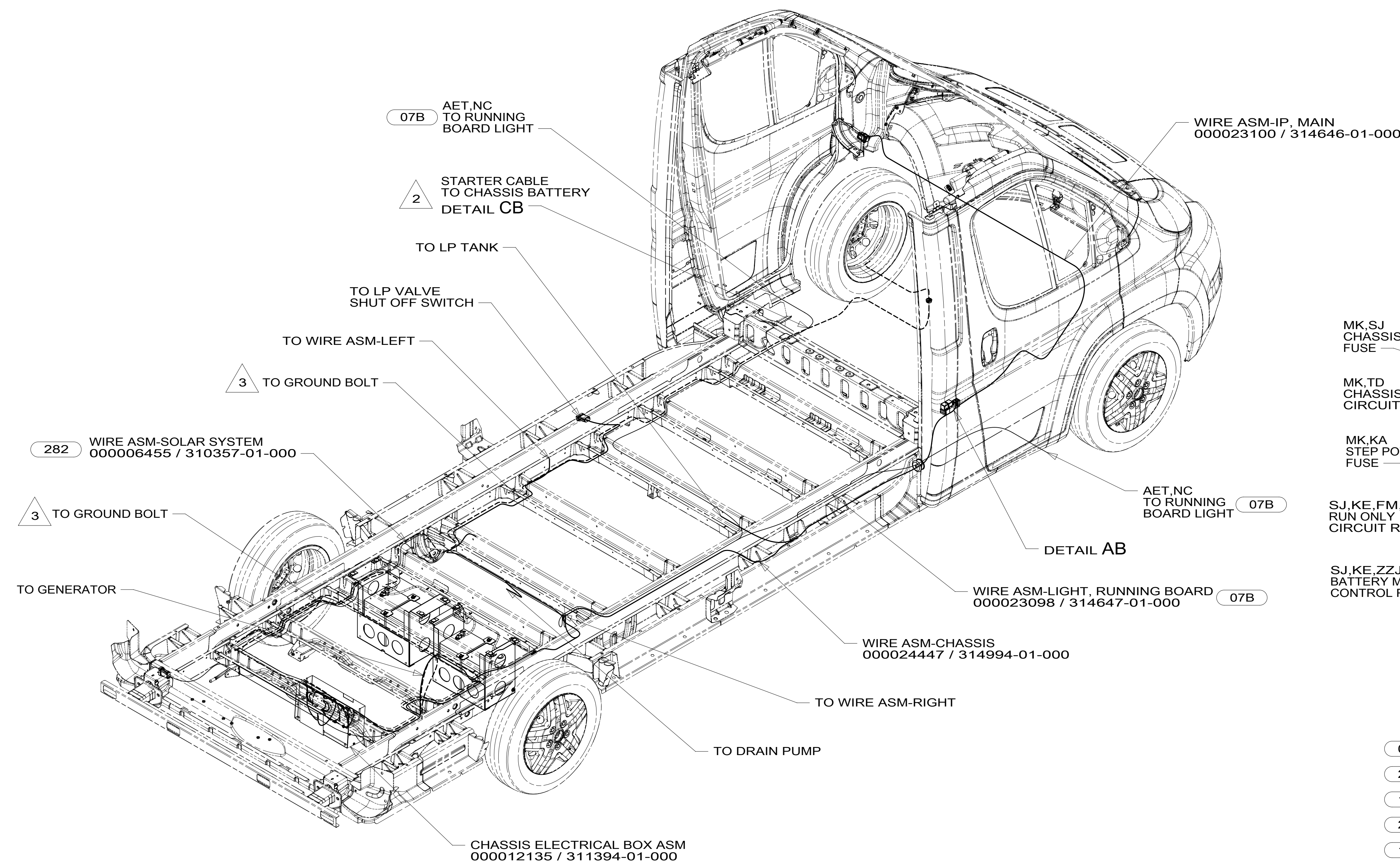
C

B

B

A

A



DETAIL AB

- 07B RUNNING BOARDS - ALUMINUM
- 282 SOLAR PANEL - 100 WATT
- 1E2 ENTRANCE STEP-ELEC.
- 265 CODES/STANDARDS-CSA/CMVSS
- 1B1 CODES/STANDARDS USA

1B1 265 1MS



DSNR:		ALL DIMENSIONS ARE IN MILLIMETERS	
DIFFR:		MATERIAL:	
UNSPECIFIED TOLERANCES:		WEIGHT: (LBS)	FIRST USED:
WHOLE DIM (X)	: 3		17 259G
ONE-PLACE (X.X)	: 1.5		
TWO-PLACE (X.XX)	: 0.50		
ANGLE	: 1°		

REFER TO ES0018 FOR FASTENER TIGHTENING GUIDELINES

**WIRING INSTL-CHASSIS**

SHEET:	ITEM/PART NO.:	REF:
1 OF 5	000022506 / 31446901000	1 15-May-2017

- NOTES:
- 4 NOT USED WITH CHASSIS SUPPLIED IGNITION INTERLOCKING SWIVEL SEAT.
  - 3 REMOVE PAINT AND UNDER COATING FROM GROUND BOLT AND NUT TO INSURE PROPER CONTACT.
  - 2 SEE SHEET 5 FOR ADDITIONAL INFORMATION.
  - 1. SECURE CONDUIT 41953, TAB AS REQUIRED, OVER ALL WIRES IN CONTACT WITH SHARP EDGES.

FOR ELECTRICAL TORQUE SPECIFICATIONS SEE DWG NO. 128783-01-000

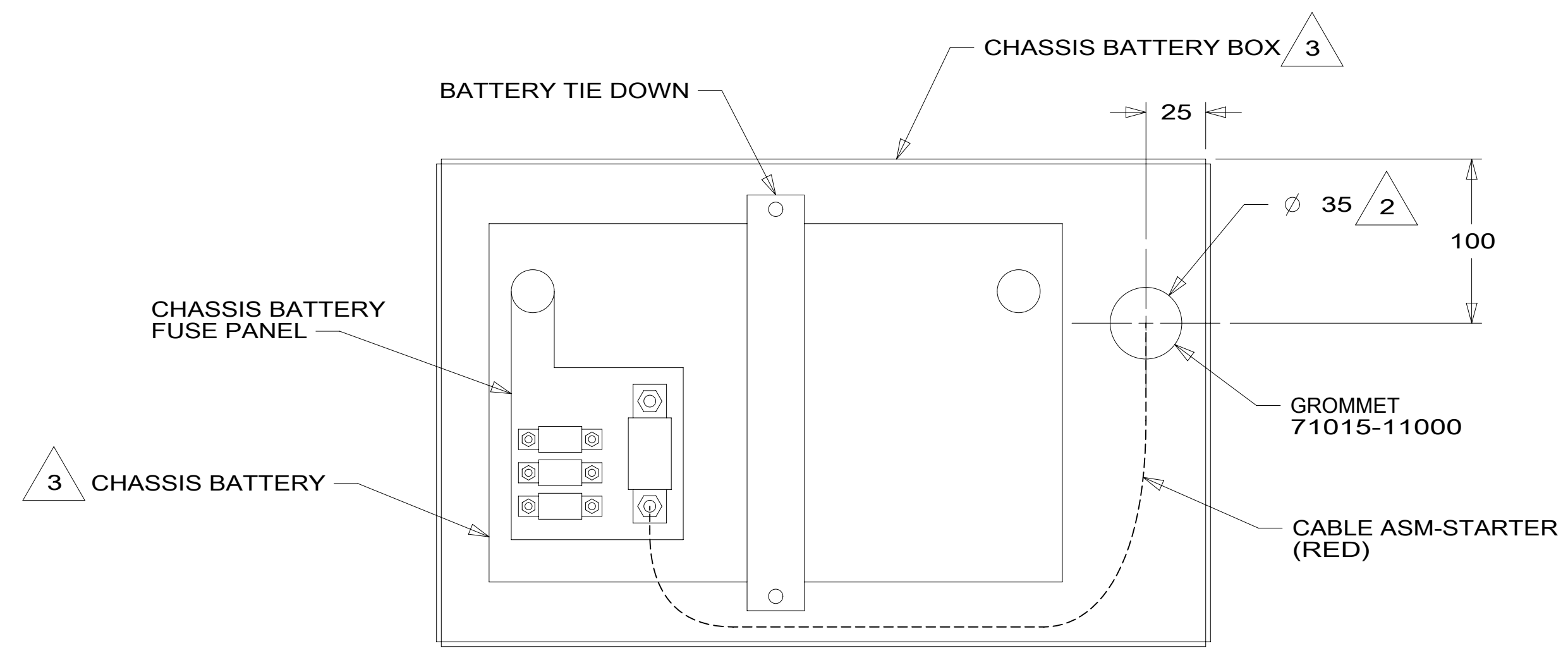
FOR ELECTRICAL CALLOUTS SEE DWG NO. 121339-01-000

8 7 6 5 4 3 2 1



8 7 6 5 4 3 2 1

D  
C  
B  
A



DETAIL CA

- 3 LOCATED IN CAB FLOOR.
- 2 DRILL HOLE IN BOTTOM OF PLASTIC BATTERY BOX.
1. SECURE CONDUIT 41953, TAB AS REQUIRED, OVER ALL WIRES IN CONTACT WITH SHARP EDGES.

NOTES:

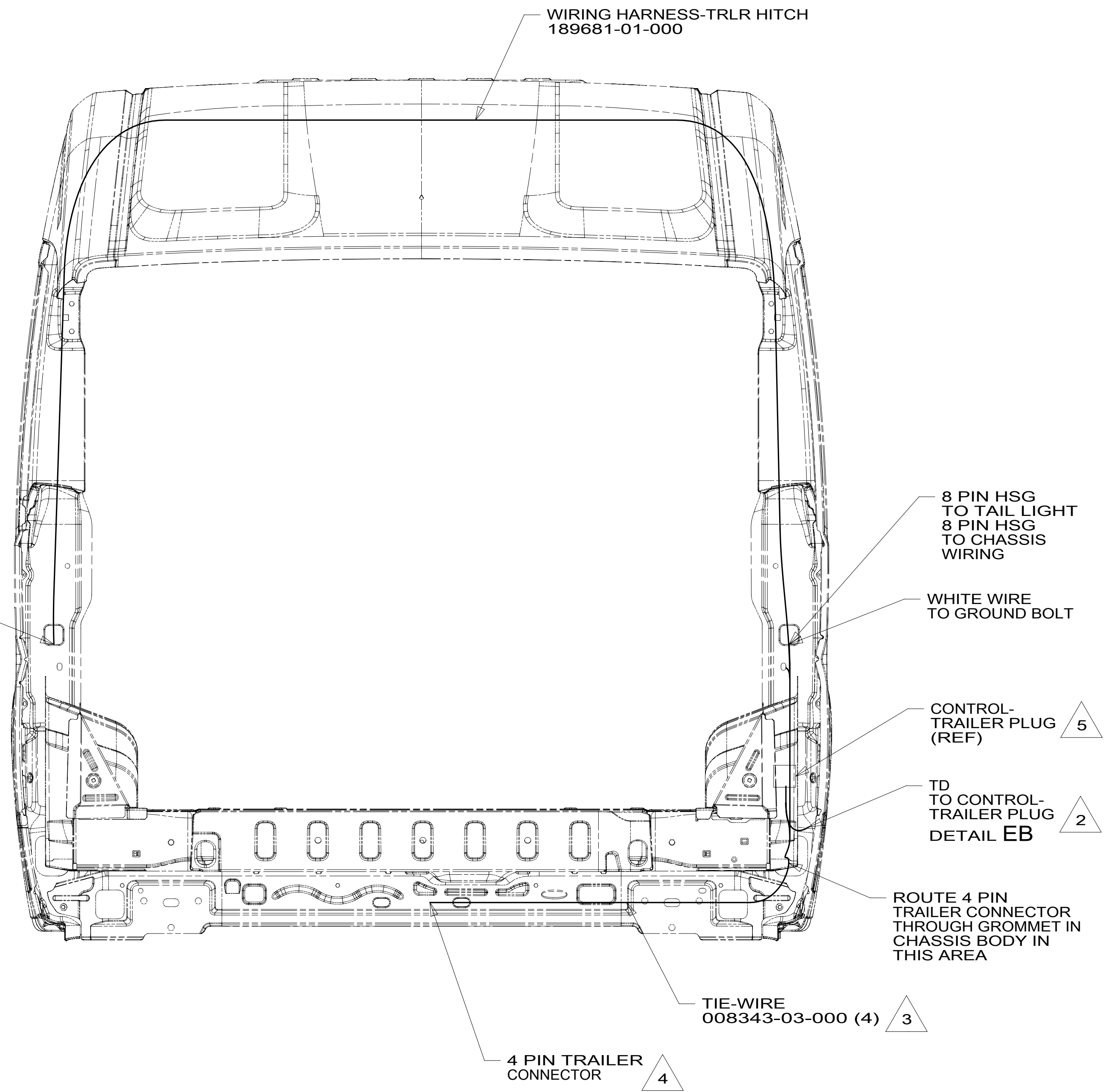
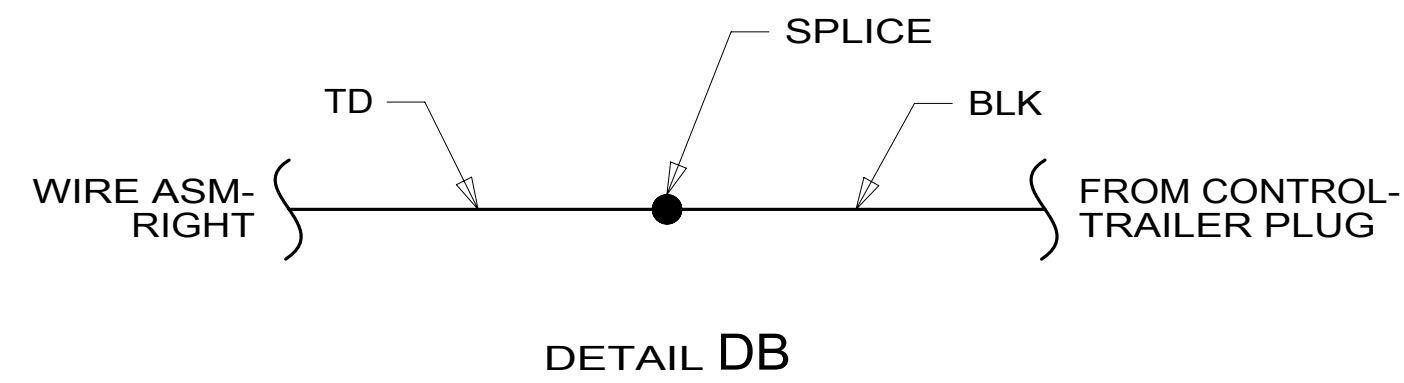
FOR ELECTRICAL TORQUE SPECIFICATIONS SEE DWG NO. 128783-01-000

FOR ELECTRICAL CALLOUTS SEE DWG NO. 121339-01-000

265 CODES/STANDARDS-CSA/CMVSS  
1B1 CODES/STANDARDS USA

DESCRIPTION: <b>WIRING INSTL-CHASSIS</b>	
SHEET: 3 OF 5	ITEM/PART NO.: 000022506 / 31446901000
REV	

8 7 6 5 4 3 2 1 15-May-2017



- 5 CONTROL SUPPLIED WITH WIRING HARNESS-TRLR HITCH. SECURE CONTROL IN PLACE WITH DOUBLE SIDED TAPE SUPPLIED WITH WIRING HARNESS-TRLR HITCH.
- 4 WIRE TIE 4-PIN TRAILER PLUG TO HITCH ASSEMBLY NEAR RECEIVER.
- 3 WIRE TIE TRAILER WIRING BEHIND BUMPER.
- 2 SEE WIRING INSTL-BODY, 12V FOR ADDITIONAL INFORMATION.

NOTES:  
1. SECURE CONDUIT 41953, TAB AS REQUIRED, OVER ALL WIRES IN CONTACT WITH SHARP EDGES.

VIEW DA

FOR ELECTRICAL TORQUE SPECIFICATIONS SEE DWG NO. 128783-01-000

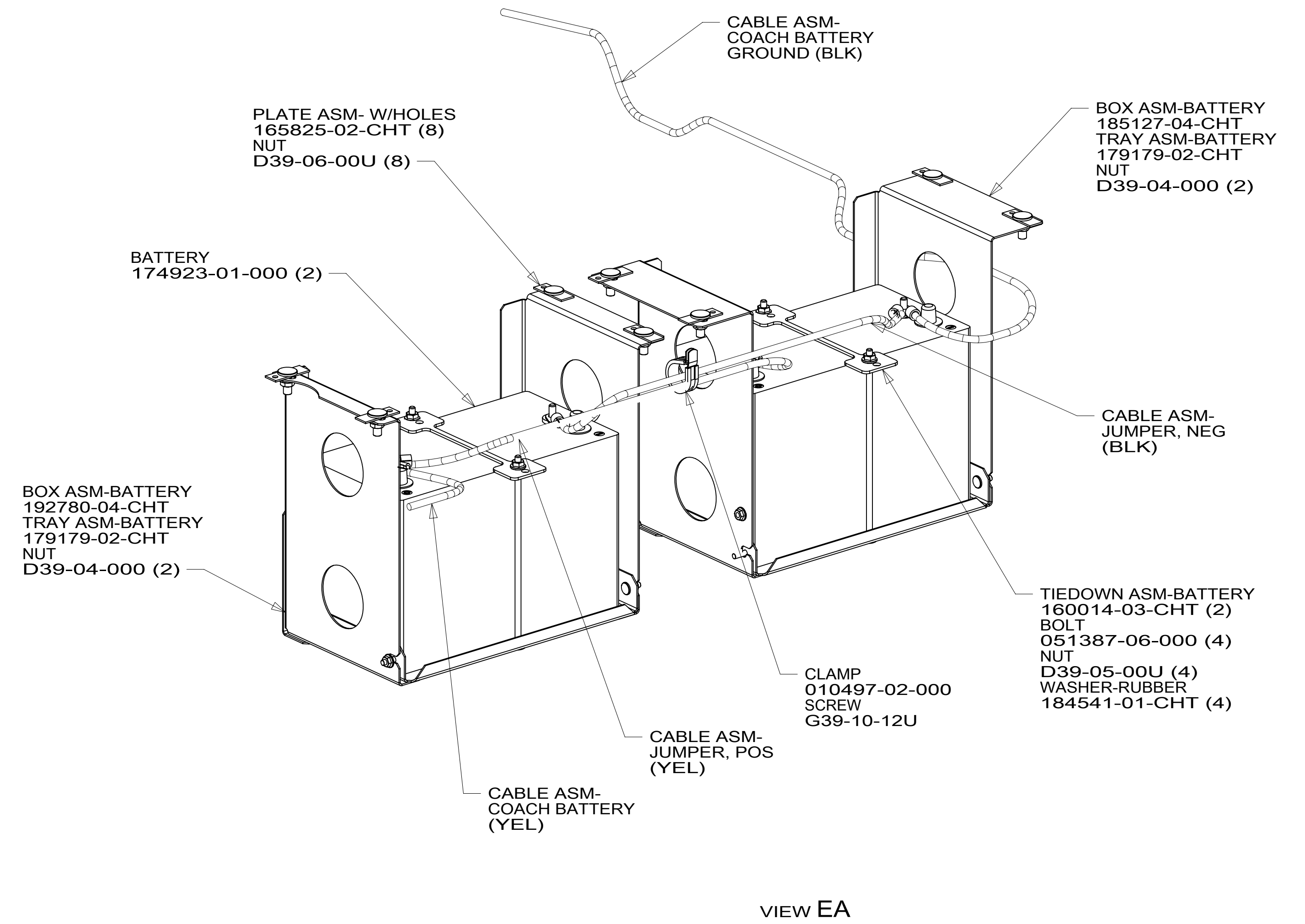
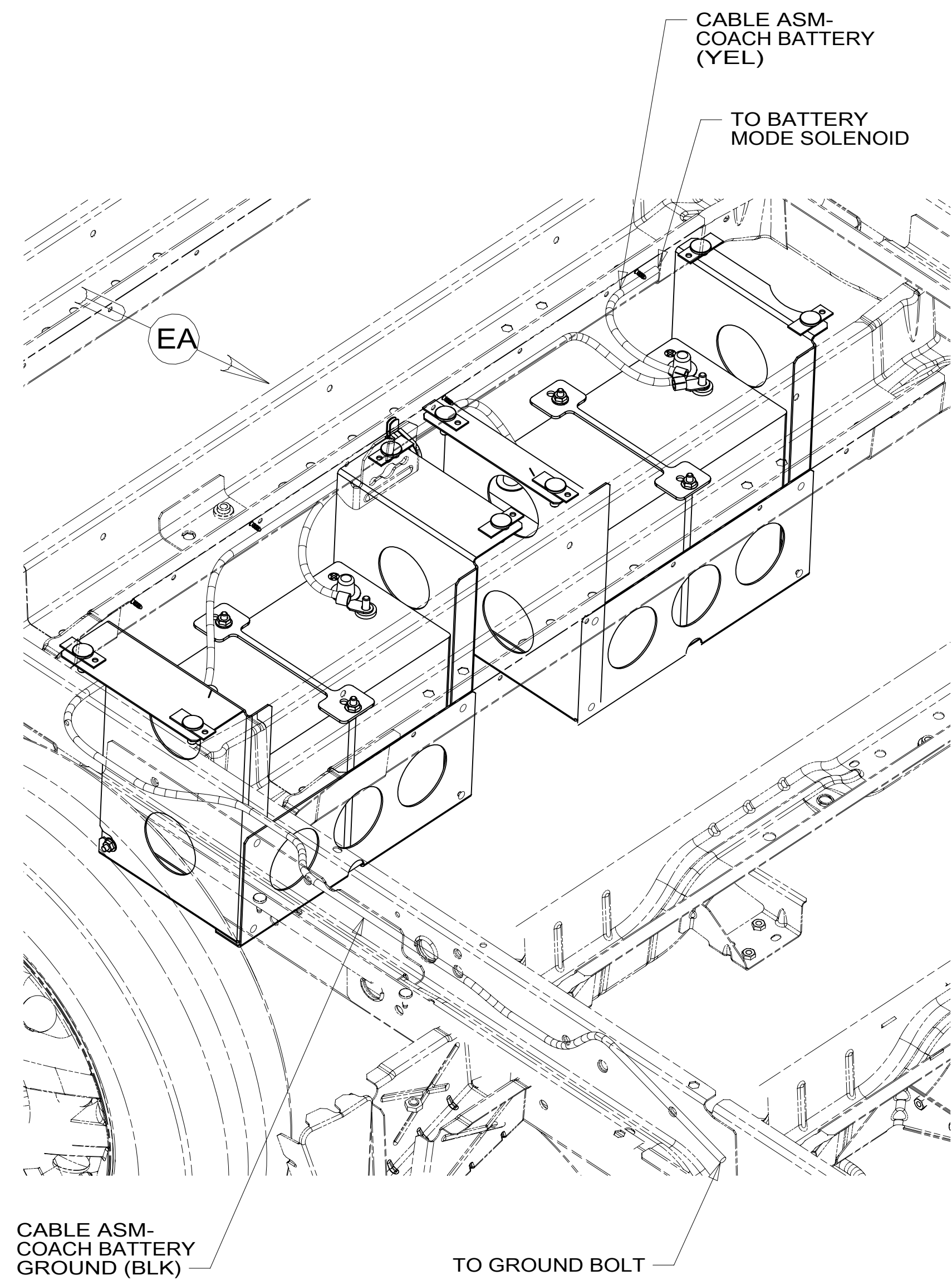
FOR ELECTRICAL CALLOUTS SEE DWG NO. 121339-01-000

- 1MS RAM-9,350# GVWR, GAS\_VAN
- 265 CODES/STANDARDS-CSA/CMVSS
- 1B1 CODES/STANDARDS USA

DESCRIPTION: <b>WIRING INSTL-CHASSIS</b>		
1B1	265	1MS
SHEET: 4 OF 5	ITEM/PART NO: 000022506 / 31446901000	REV



8 7 6 5 4 3 2 1



CABLE ASM-STARTER (RED)	185087-01-063
CABLE ASM-COACH BATTERY (YEL)	141415-52-022
CABLE ASM-COACH BATTERY GND (BLK)	133566-17-009
CABLE ASM-GENERATOR (GRN)	141415-42-020
CABLE ASM-GENERATOR GND (BLK)	133566-17-016
CABLE ASM-JUMPER,POS	141415-52-009
CABLE ASM-JUMPER,NEG	133566-17-009

1. AT MINIMUM ALL WIRES TO BE SUPPORTED AND SECURED PER CODE REQUIREMENTS. USE CLAMP 10495 OR 10497 OR WIRE TIE 8343 OR 108046 AND SCREW G67-XX-XXX OR G56-XX-XXX AS APPROPRIATE FOR INSTALLATION.

NOTES:

FOR ELECTRICAL TORQUE SPECIFICATIONS SEE DWG NO. 128783-01-000

FOR ELECTRICAL CALLOUTS SEE DWG NO. 121339-01-000

265 CODES/STANDARDS-CSA/CMVSS

1B1 CODES/STANDARDS USA

1B1 265

DESCRIPTION: WIRING INSTL-CHASSIS

SHEET: 5 OF 5 ITEM/PART NO: 000022506 / 31446901000 REV

8 7 6 5 4 3 2 1 15-May-2017