

ANTENNA-SATELLITE RADIO  
(SUPPLIED WITH SXM RECEIVER)  
PLATE-SATELLITE RADIO  
177256-04-CHT  
SCREW  
G11-08-08U (4)  
SEAL

70D  
643 5

CABLE-MONITOR 1 3

WIRE ASM-MONITOR, 15'  
(REF) 283

2 70D  
643 CABLE-ANTENNA, SATELLITE  
(SUPPLIED WITH ANTENNA)

283 WIRE ASM-MONITOR  
(REF)

4 ANTENNA-RADIO

HOLE IN FLOOR

5 MOUNT ANTENNA AND PLATE SUCH THAT BASE IS SQUARE WITH ROOF AND DIRECTLY OVER HOLE IN ROOF. SEAL BOTH HOLE IN ROOF AND ANTENNA BASE AT SCREWS.

4 SUPPLIED WITH CHASSIS. USE SHORTEST SUPPLIED ANTENNA.

3 ROUTE CABLE TO DASH RADIO.

2 ROUTE CABLE FROM RADIO TO PASSENGER'S STEPWELL AREA, UP WINGWALL, THROUGH SLEEPER BOARD ASM, UNDER TRIM TO ANTENNA PLATE ON ROOF.

1 REAR MONITOR CAMERA CABLE IS PART OF WIRE ASM-CHASSIS AND RUNS ALONG LEFT FRAME RAIL.

NOTES:

- 643 RENTAL-MILES DIXON
- 70D RADIO - SATELLITE SIRIUSXM
- 283 MIRRORS-UPGRADE W/CAMERA
- 265 CODES/STANDARDS-CSA/CMVSS
- 1B1 CODES/STANDARDS USA

1B1 265



DSNR:		ALL DIMENSIONS ARE IN MILLIMETERS	
DFFR:		MATERIAL:	
UNSPECIFIED TOLERANCES:			
WHOLE DIM (X)	: 3		
ONE-PLACE (X.X)	: 1.5		
TWO-PLACE (X.XX)	: 0.50		
ANGLE	: 1°		

REFER TO ES0018 FOR FASTENER TIGHTENING GUIDELINES

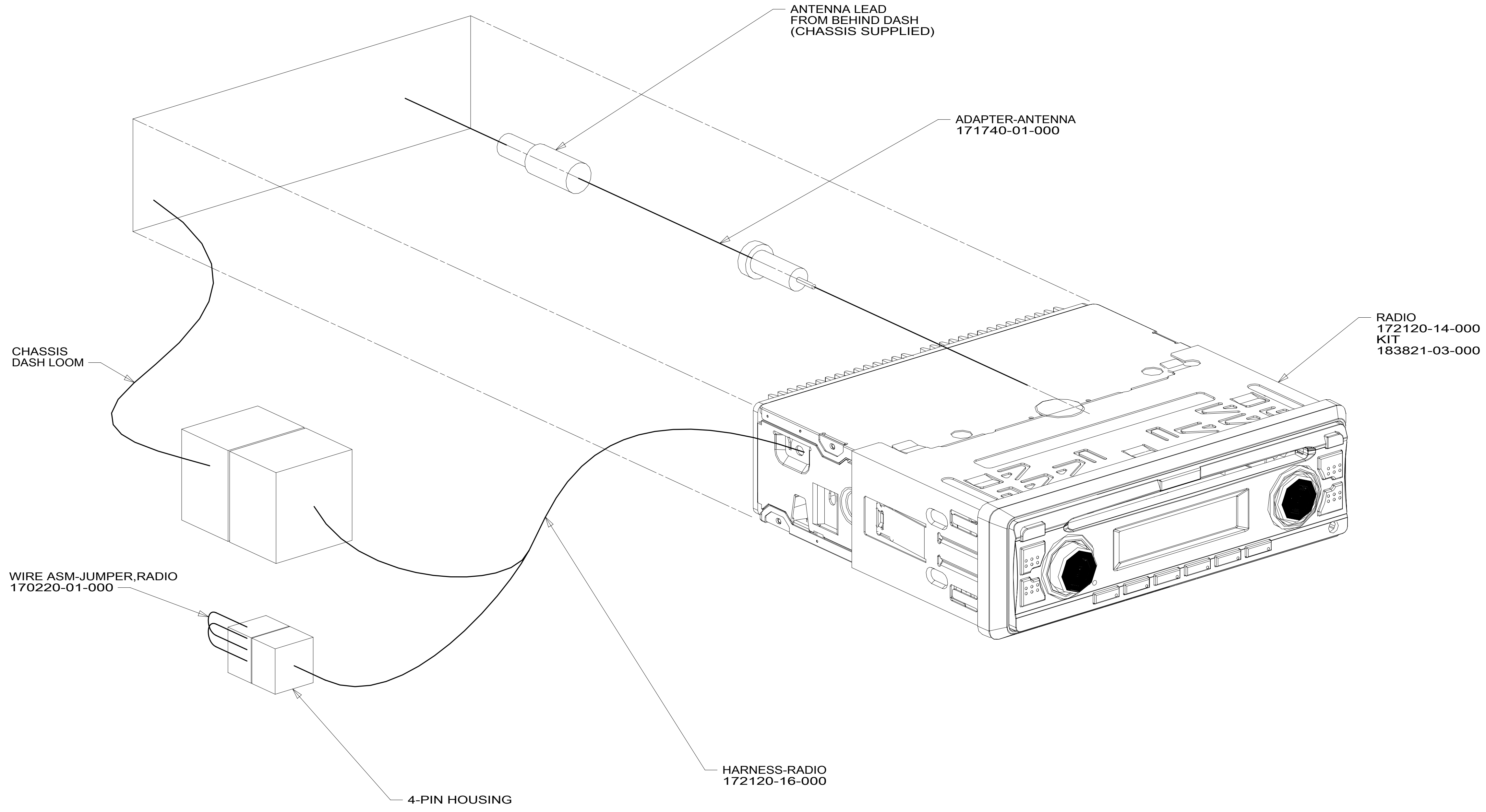
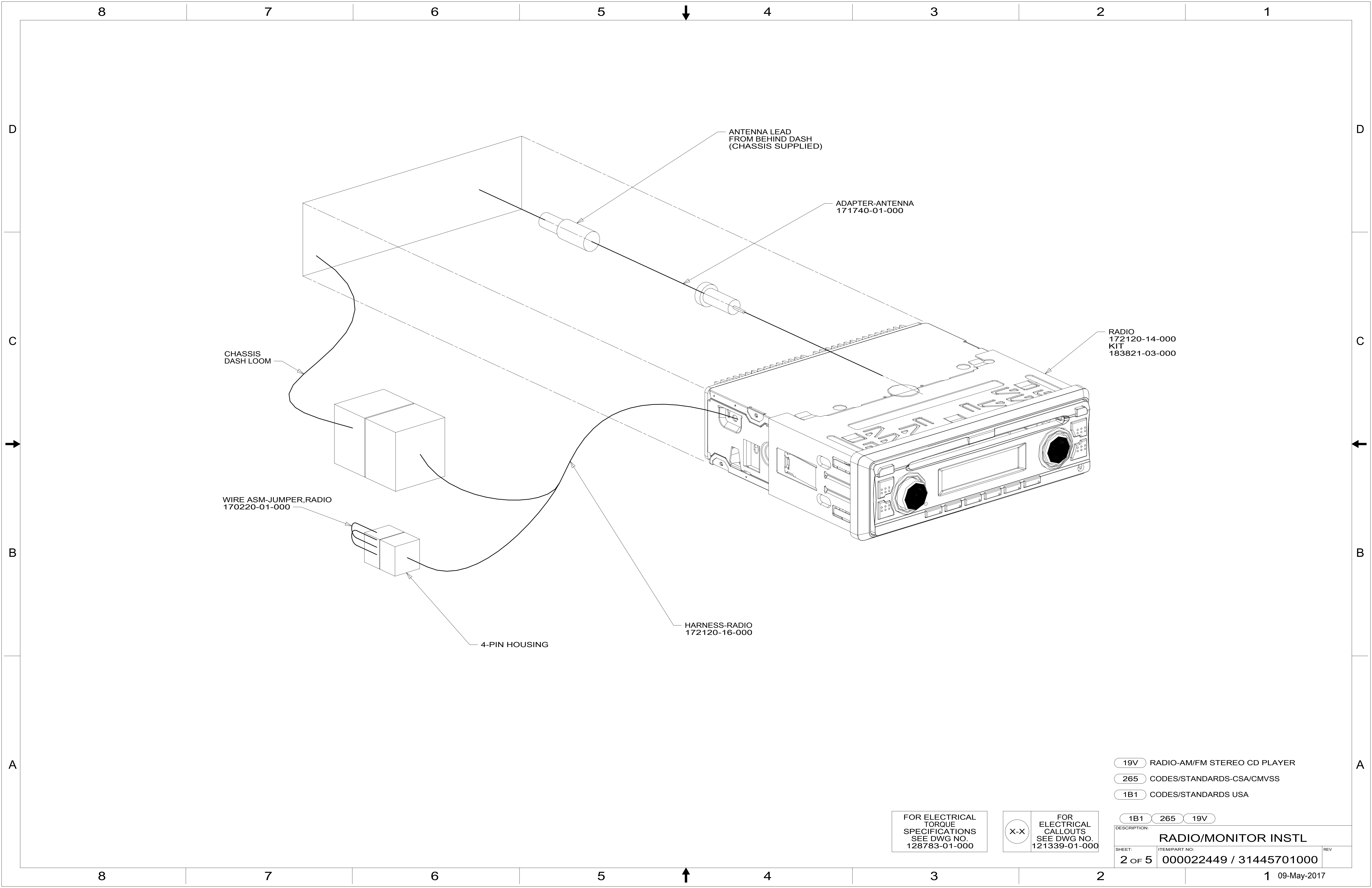
WEIGHT: (LBS) FIRST USED:  
17 331K

**RADIO/MONITOR INSTL**

SHEET: 1 OF 5 ITEM/PART NO: 00022449 / 31445701000 REV

FOR ELECTRICAL TORQUE SPECIFICATIONS SEE DWG NO. 128783-01-000

FOR ELECTRICAL CALLOUTS SEE DWG NO. 121339-01-000

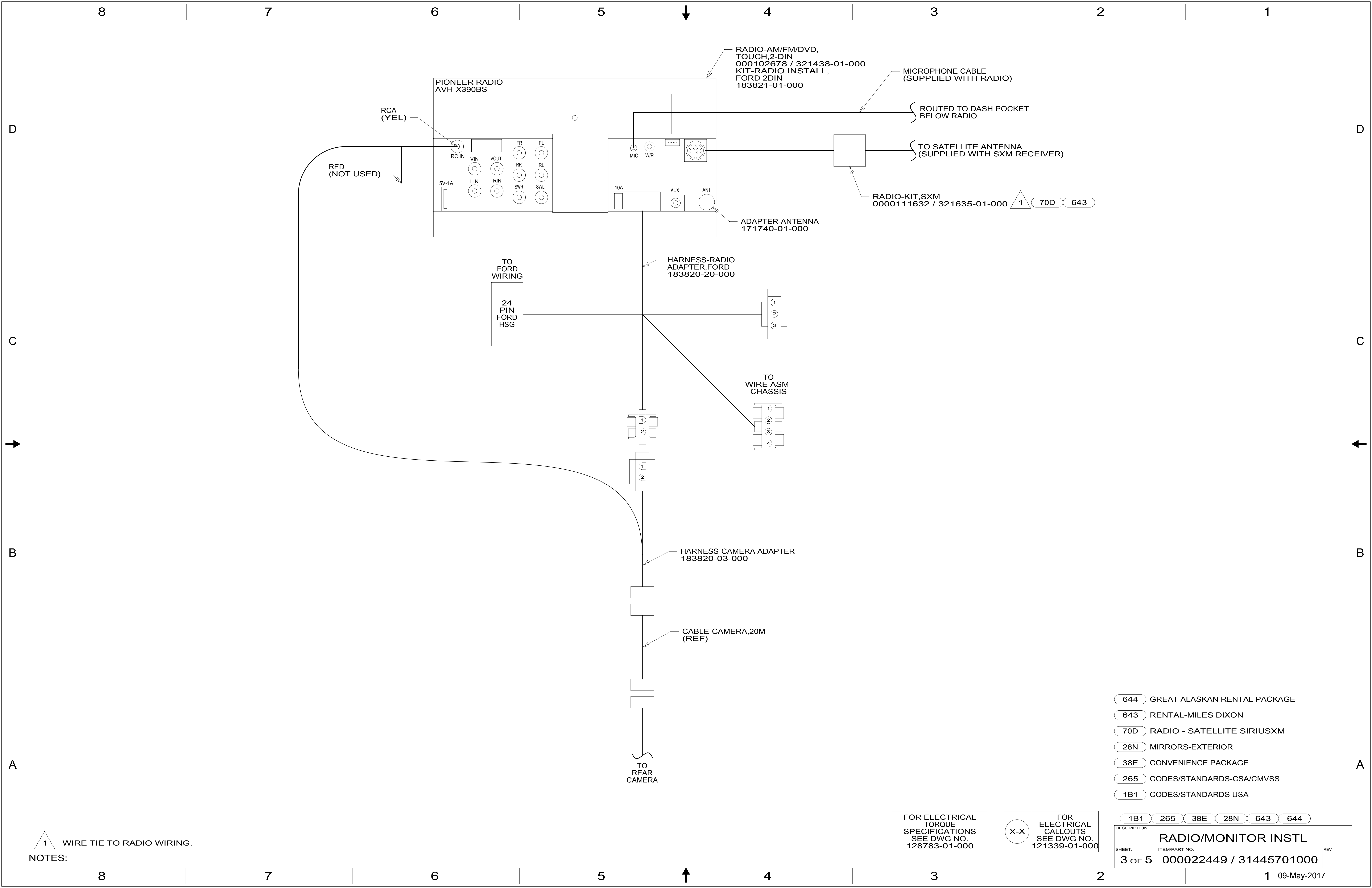


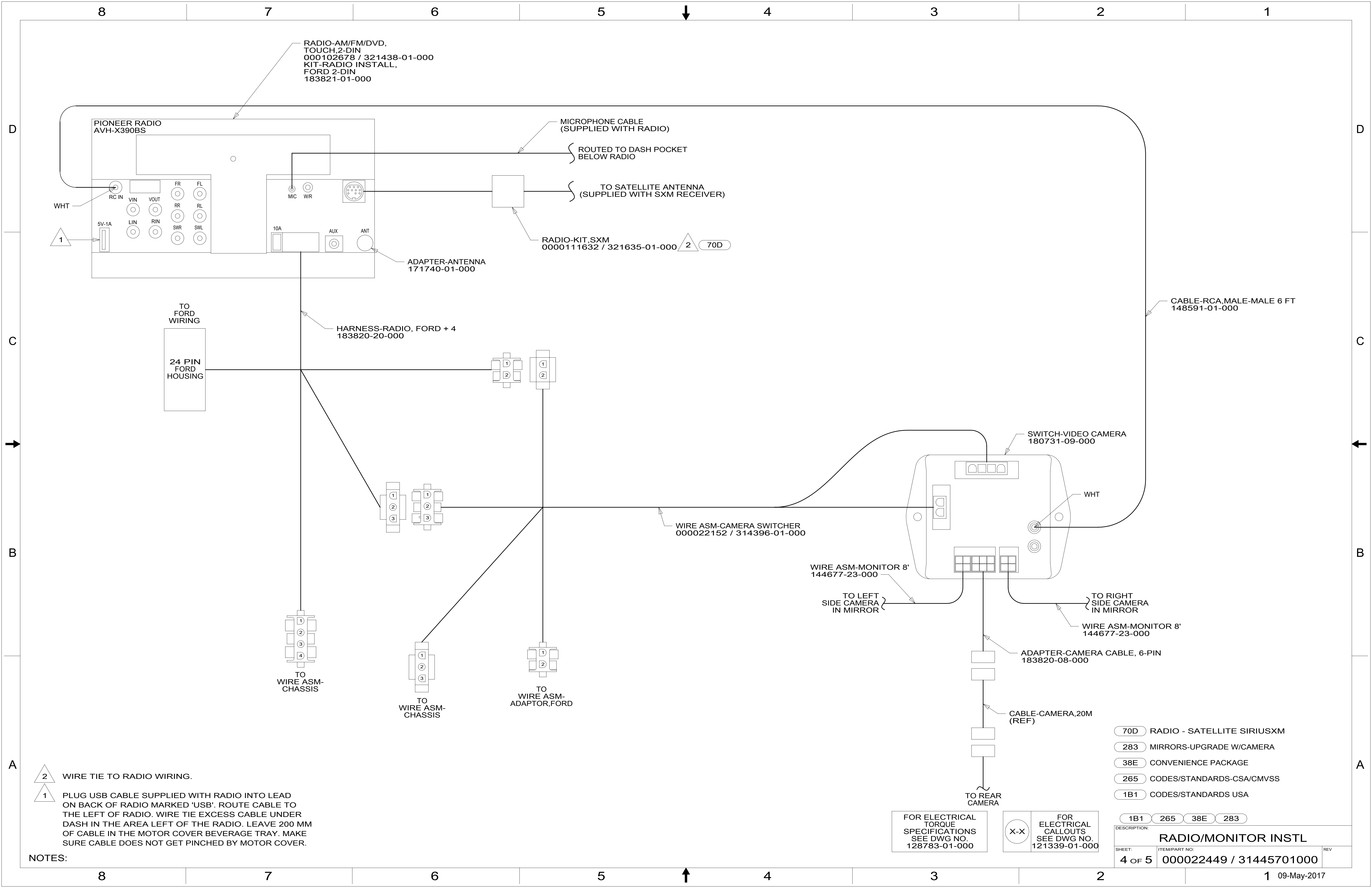
- 19V RADIO-AM/FM STEREO CD PLAYER
- 265 CODES/STANDARDS-CSA/CMVSS
- 1B1 CODES/STANDARDS USA

FOR ELECTRICAL TORQUE SPECIFICATIONS SEE DWG NO. 128783-01-000

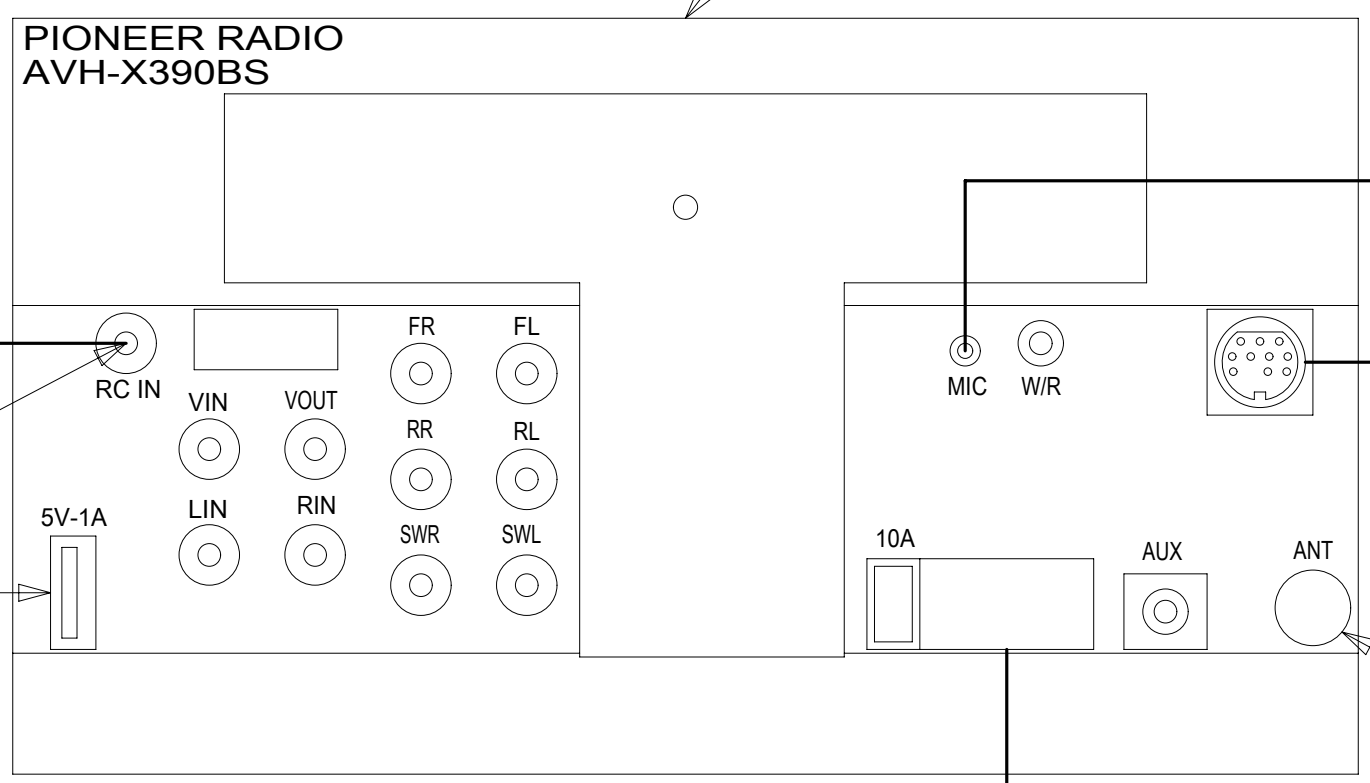
FOR ELECTRICAL CALLOUTS SEE DWG NO. 121339-01-000

DESCRIPTION:	1B1 265 19V	
<b>RADIO/MONITOR INSTL</b>		
SHEET:	ITEM/PART NO:	REV
2 OF 5	000022449 / 31445701000	





RADIO-AM/FM/DVD,  
TOUCH,2-DIN  
000102678 / 321438-01-000  
KIT-RADIO INSTALL,  
FORD 2-DIN  
183821-01-000



MICROPHONE CABLE  
(SUPPLIED WITH RADIO)

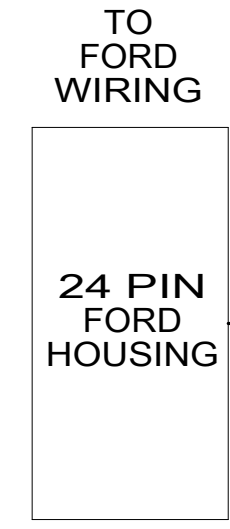
ROUTED TO DASH POCKET  
BELOW RADIO

TO SATELLITE ANTENNA  
(SUPPLIED WITH SXM RECEIVER)

RADIO-KIT,SXM  
0000111632 / 321635-01-000

ADAPTER-ANTENNA  
171740-01-000

HARNES-RADIO, FORD + 4  
183820-20-000



CABLE-RCA,MALE-MALE 6 FT  
148591-01-000

SWITCH-VIDEO CAMERA  
180731-09-000

WIRE ASM-CAMERA SWITCHER  
000022152 / 314396-01-000

WIRE ASM-MONITOR 8'  
144677-23-000

TO LEFT  
SIDE CAMERA  
IN MIRROR

TO RIGHT  
SIDE CAMERA  
IN MIRROR

WIRE ASM-MONITOR 8'  
144677-23-000

ADAPTER-CAMERA CABLE, 6-PIN  
183820-08-000

CABLE-CAMERA,20M  
(REF)

TO REAR  
CAMERA

TO WIRE ASM-  
CHASSIS

TO WIRE ASM-  
CHASSIS

TO WIRE ASM-  
ADAPTOR,FORD

2 WIRE TIE TO RADIO WIRING.

1 PLUG USB CABLE SUPPLIED WITH RADIO INTO LEAD ON BACK OF RADIO MARKED 'USB'. ROUTE CABLE TO THE LEFT OF RADIO. WIRE TIE EXCESS CABLE UNDER DASH IN THE AREA LEFT OF THE RADIO. LEAVE 200 MM OF CABLE IN THE MOTOR COVER BEVERAGE TRAY. MAKE SURE CABLE DOES NOT GET PINCHED BY MOTOR COVER.

NOTES:

FOR ELECTRICAL  
TORQUE  
SPECIFICATIONS  
SEE DWG NO.  
128783-01-000

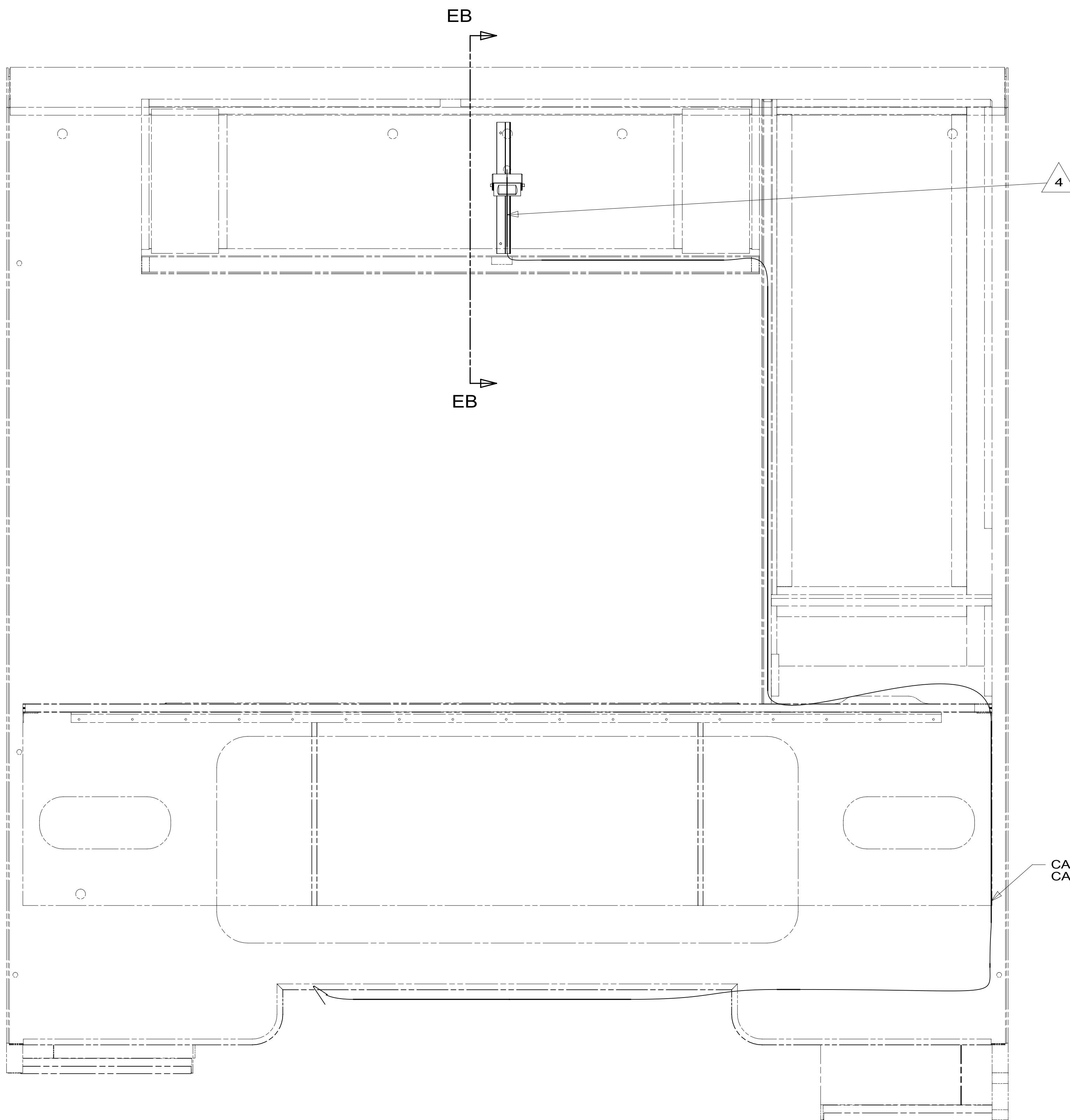
FOR ELECTRICAL  
CALLOUTS  
SEE DWG NO.  
121339-01-000

- 70D RADIO - SATELLITE SIRIUSXM
- 283 MIRRORS-UPGRADE W/CAMERA
- 38E CONVENIENCE PACKAGE
- 265 CODES/STANDARDS-CSA/CMVSS
- 1B1 CODES/STANDARDS USA

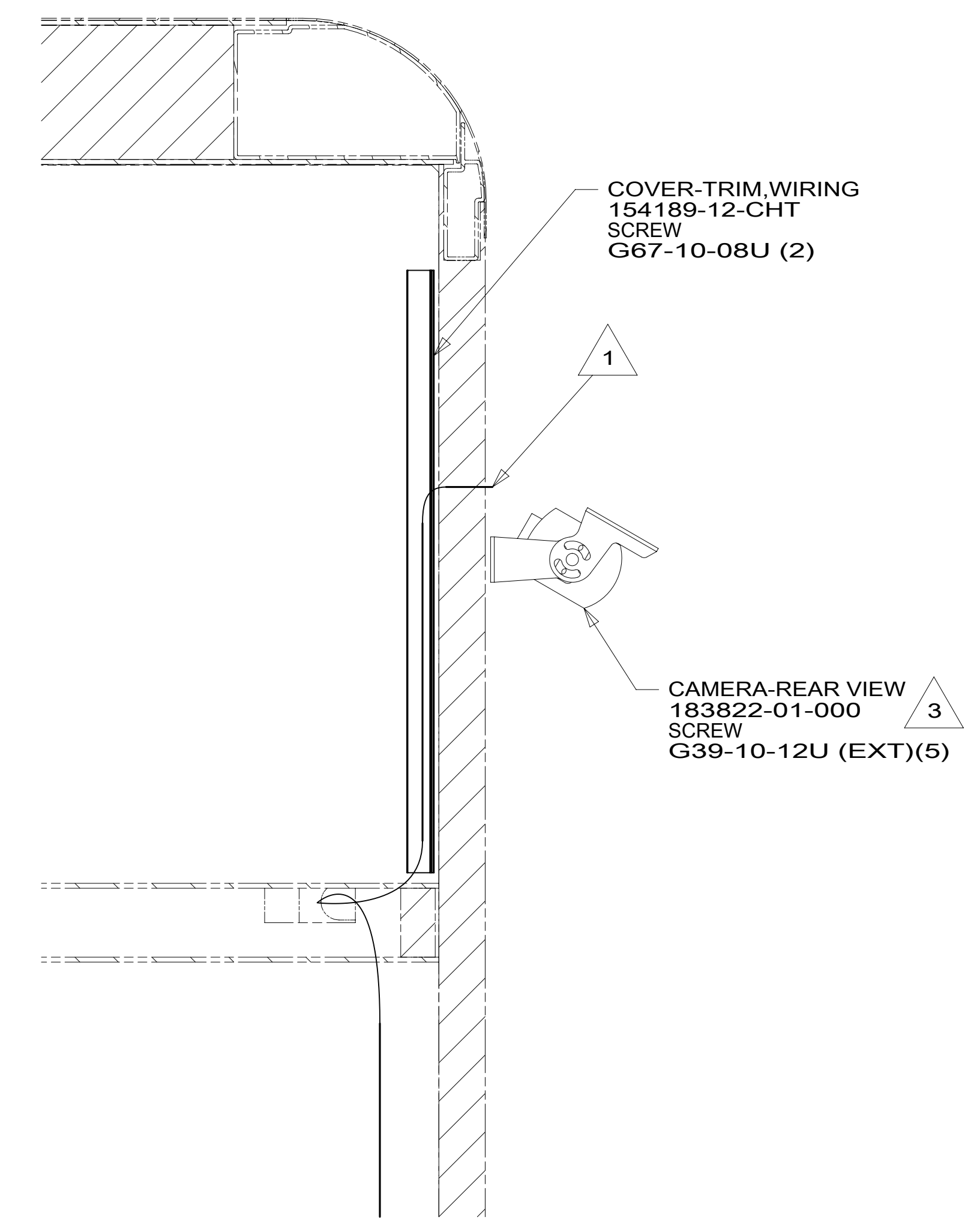
1B1 265 38E 283

DESCRIPTION: <b>RADIO/MONITOR INSTL</b>		
SHEET: 4 OF 5	ITEM/PART NO: 000022449 / 31445701000	REV

8 7 6 5 4 3 2 1



VIEW EA



SECTION EB-EB 38E 643

- NOTES:
- 4 LEAVE CAMERA CABLE IN BOTTOM OF OVHD CABT WITHOUT 38E
  - 3 ADJUST CAMERA AFTER MOUNTING SO BACKWALL IS JUST VISIBLE ON BOTTOM OF THE SCREEN.
  - 2 REAR MONITOR CABLE IS PART OF THE WIRE ASM-CHASSIS.
  - 1 CABLE ROUTED THRU BACKWALL.

- 643 RENTAL-MILES DIXON
- 38E CONVENIENCE PACKAGE
- 265 CODES/STANDARDS-CSA/CMVSS
- 1B1 CODES/STANDARDS USA

FOR ELECTRICAL TORQUE SPECIFICATIONS SEE DWG NO. 128783-01-000

FOR ELECTRICAL CALLOUTS SEE DWG NO. 121339-01-000

DESCRIPTION: <b>RADIO/MONITOR INSTL</b>		
SHEET: 5 OF 5	ITEM/PART NO.: 000022449 / 31445701000	REV

8 7 6 5 4 3 2 1 09-May-2017