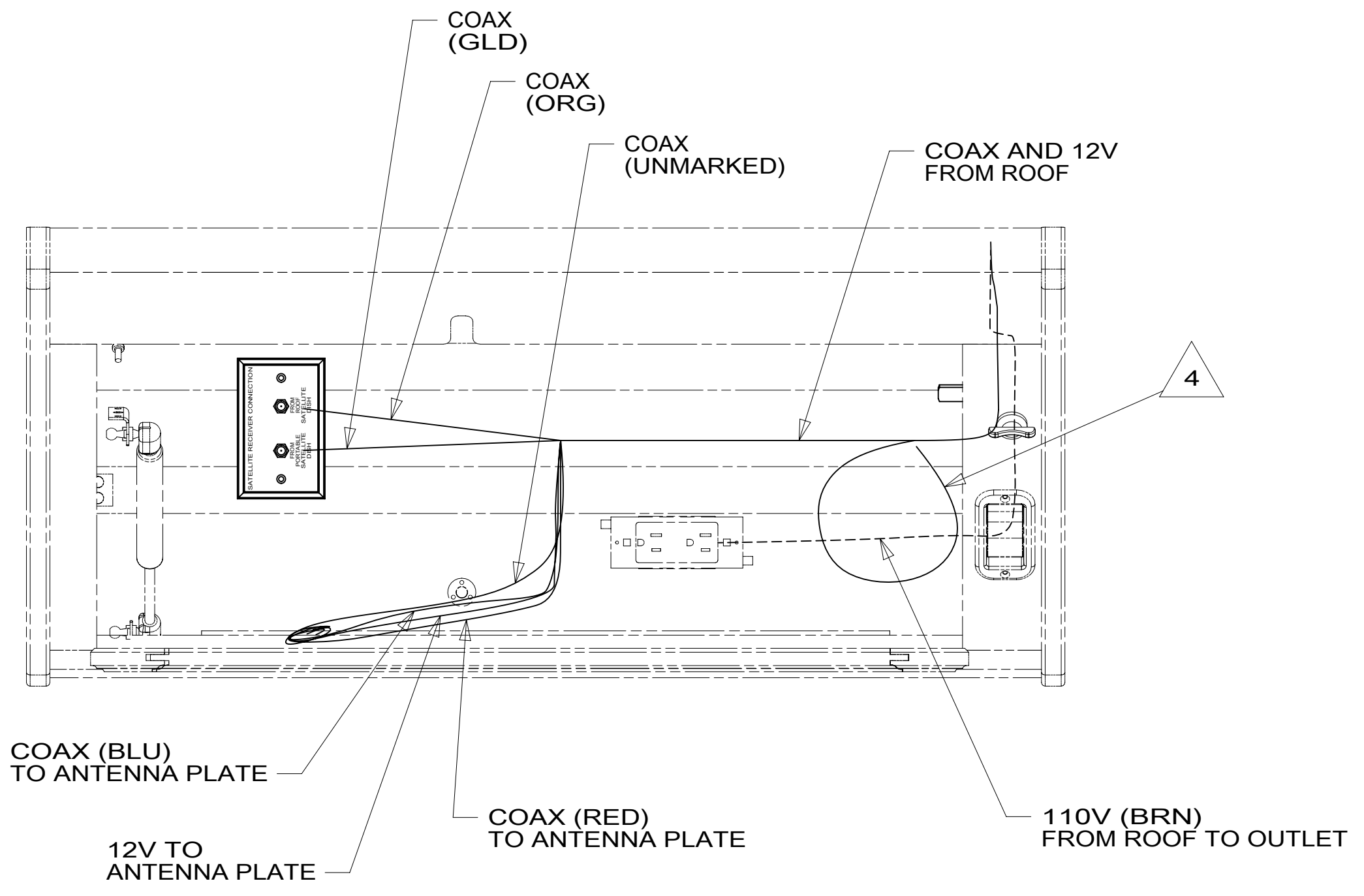
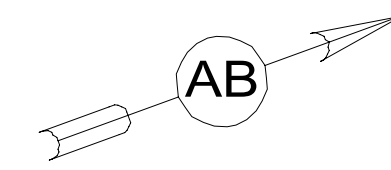
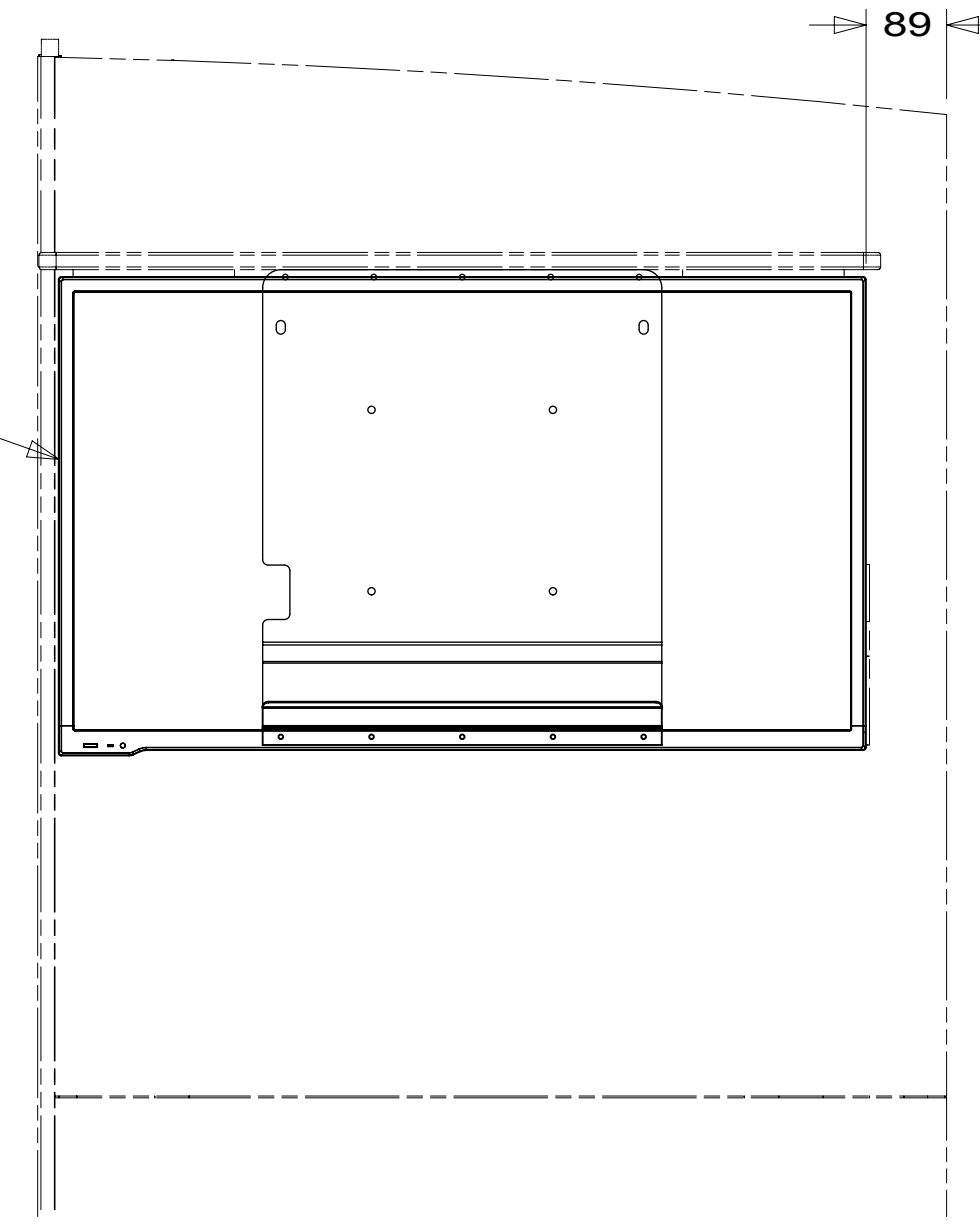
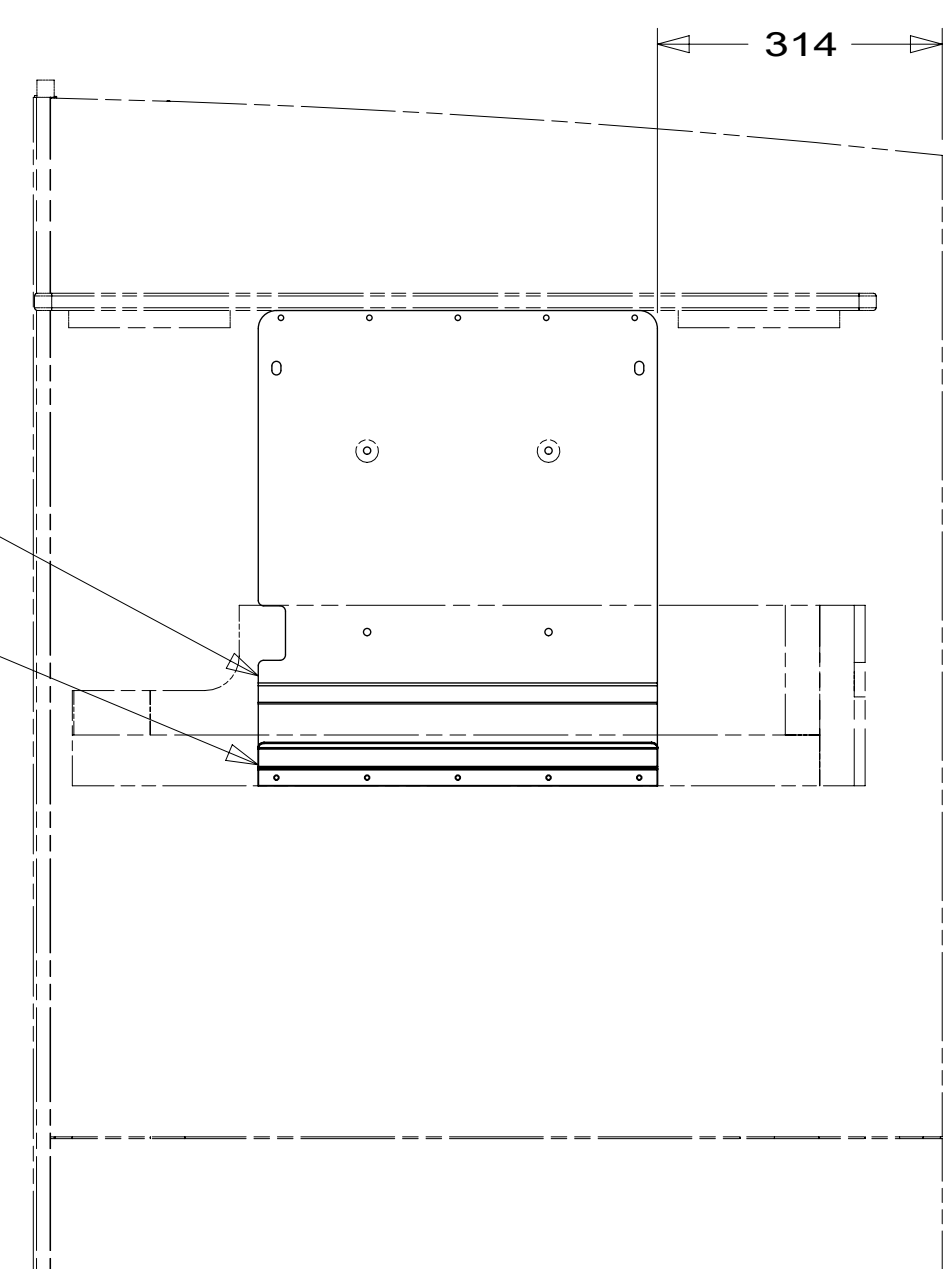


TV-39, FLAT PANEL DLED, HDTV 000023379 / 314833-01-000 SCREW (SUPPLIED W/TV)



BRACKET-MOUNTING, TV 000024202 / 314929-01-CHT SCREW G39-08-12U (5)

CLIP-TRIM 130034-08-CHT SCREW G39-08-12U (5)



(TV NOT SHOWN)

- 4 COIL HDMI CABLE HERE AND SECURE WITH TIE-WIRE 008343-01-000.
- WHERE WIRES PASS THROUGH HOLES IN STEEL AND NOT OTHERWISE PROTECTED, USE GROMMET 92908-02-000.
 - ALL WIRES TO BE SECURED WITH CLAMP 10495-01-000 OR CLIP 80734-01-000 EVERY 600MM. USE SCREW G67-10-12B UNLESS OTHERWISE SPECIFIED.
 - 110V WIRE TO BE CLAMPED WITH CLAMP 10497-05-000 WITHIN 200MM OF OUTLET BOXES, USE SCREW G67-10-12B.

FOR ELECTRICAL TORQUE SPECIFICATIONS SEE DWG NO. 128783-01-000

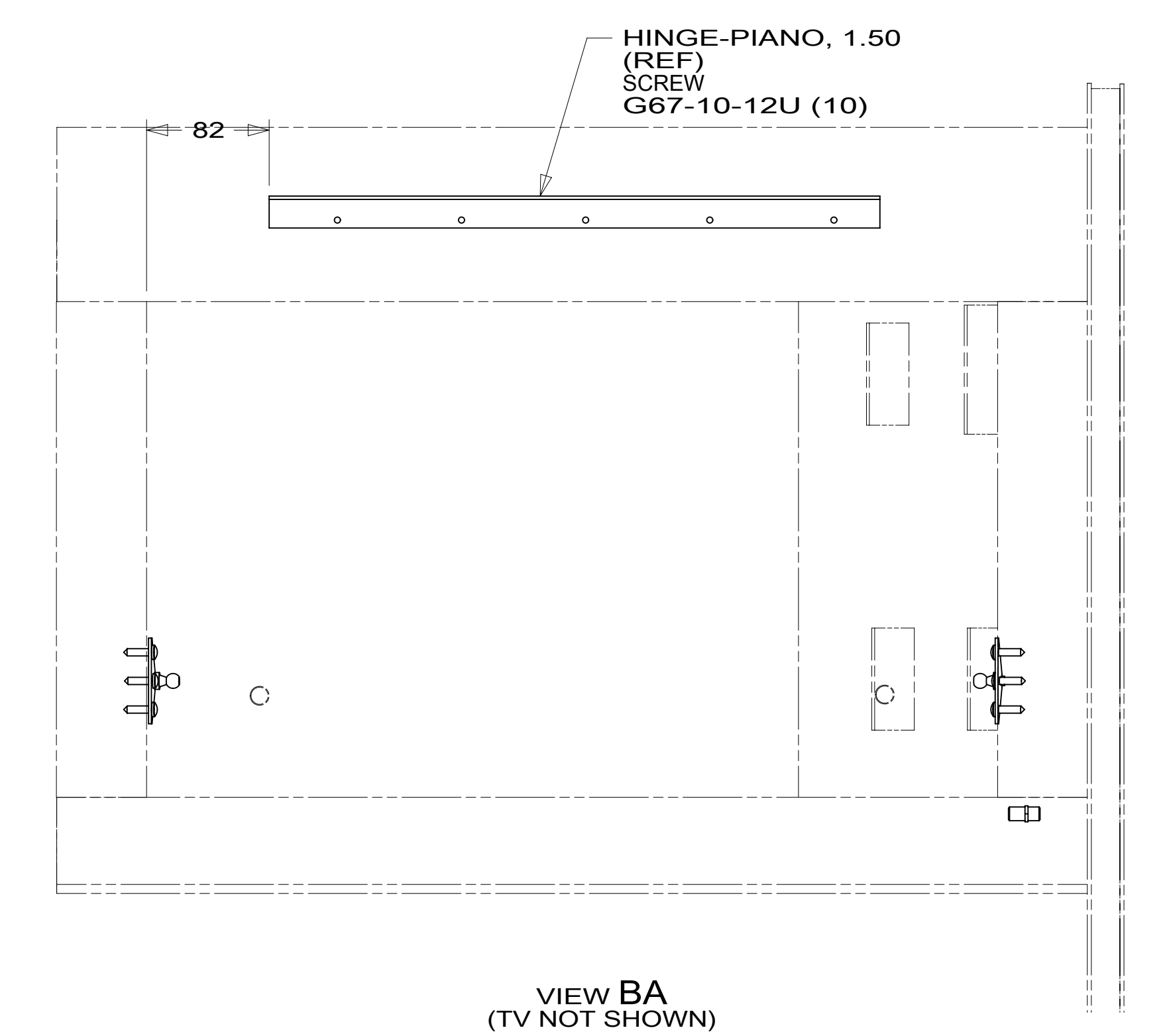
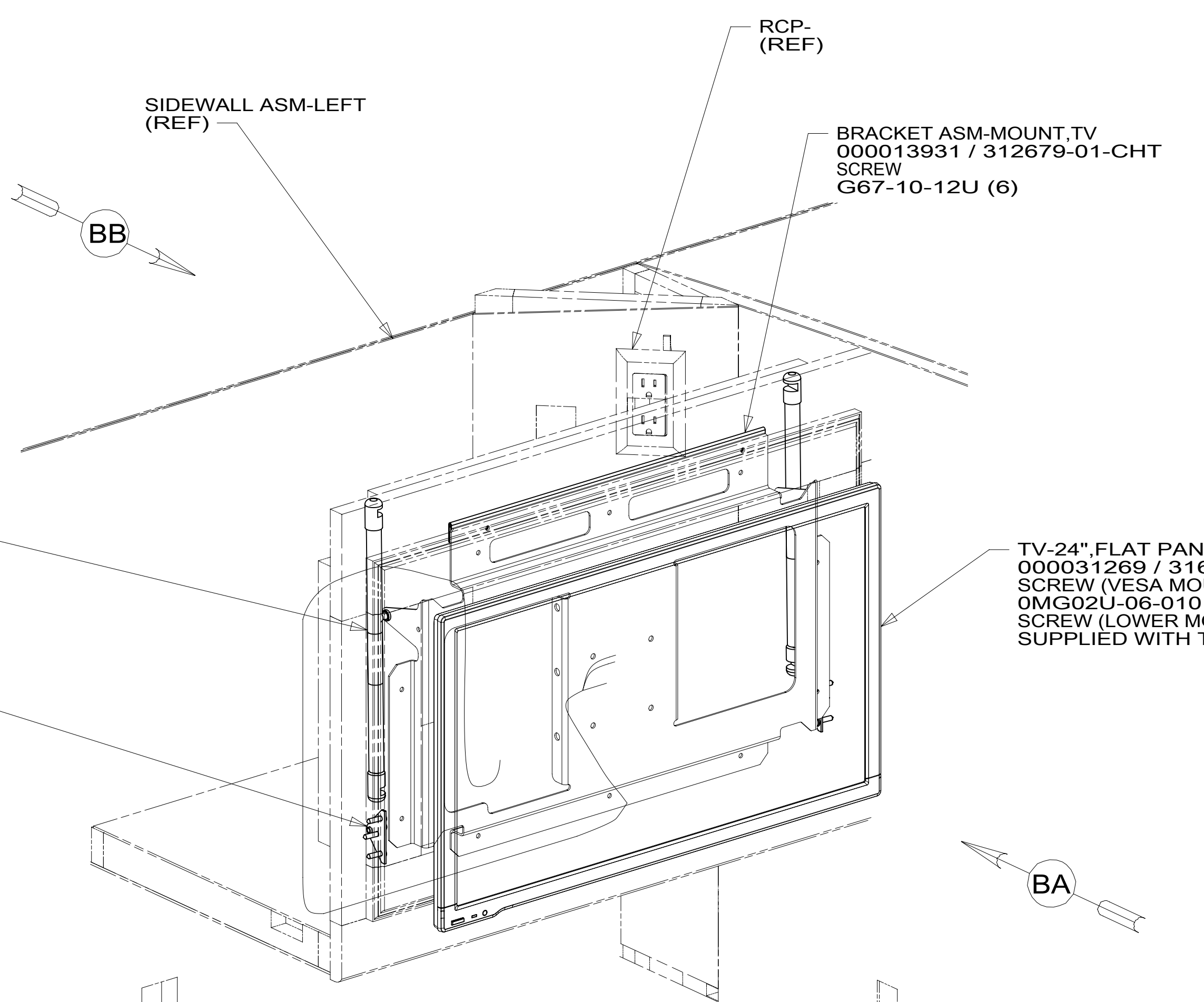
FOR ELECTRICAL CALLOUTS SEE DWG NO. 121339-01-000

- 265 CODES/STANDARDS-CSA/CMVSS
- 1B1 CODES/STANDARDS USA
- 1B1 265



DSNR:		ALL DIMENSIONS ARE IN MILLIMETERS	
DFFR:		MATERIAL:	
UNSPECIFIED TOLERANCES:			
WHOLE DIM (X)	: 3		
ONE-PLACE (X.X)	: 1.5		
TWO-PLACE (X.XX)	: 0.50		
ANGLE	: 1°		
REFER TO ES0018 FOR FASTENER TIGHTENING GUIDELINES		WEIGHT: (LBS)	FIRST USED:
			17 E32YE
DESCRIPTION: WIRING INSTL-TV/DVD			
SHEET:	ITEM/PART NO:	REV	
1 OF 3	000021893 / 31436501000		
REF:		1 28-Jun-2017	

8 7 6 5 4 3 2 1



SPRING-GAS
142569-31-000 (2)

BRACKET-GAS SPRING
126263-15-CHT (2)
SCREW
G67-10-12U (6)

TV-24\"/>

ADAPTER
82134-01-000

CONNECTOR-HDMI
179396-01-000 (2)

CABLE ASM-HDMI
165308-03-000 (2) 3

CABLE ASM-COAX
87105-08-018
(GRN)

SLEEVE-BRAIDING
139049-02-000
(400 MM) 1

TAPE-FOAM
076322-21-000
(340 MM) 2

- NOTES:**
- 3 MARK ONE HDMI CABLE WITH ONE WRAP OF GRN TAPE AND MARK ONE HDMI CABLE WITH TWO WRAPS OF GRN TAPE.
 - 2 CLEAN AND APPLY ADHESIVE PROMOTER 87211-01-000 TO BOTH SURFACES AND BOND WHERE TV CONTACTS CABINET.
 - 1 USE TIE-WIRE 8343-04-000 TO ATTACH WIRE ASM TO HOLES IN BRACKET.

FOR ELECTRICAL TORQUE SPECIFICATIONS SEE DWG NO. 128783-01-000

FOR ELECTRICAL CALLOUTS SEE DWG NO. 121339-01-000

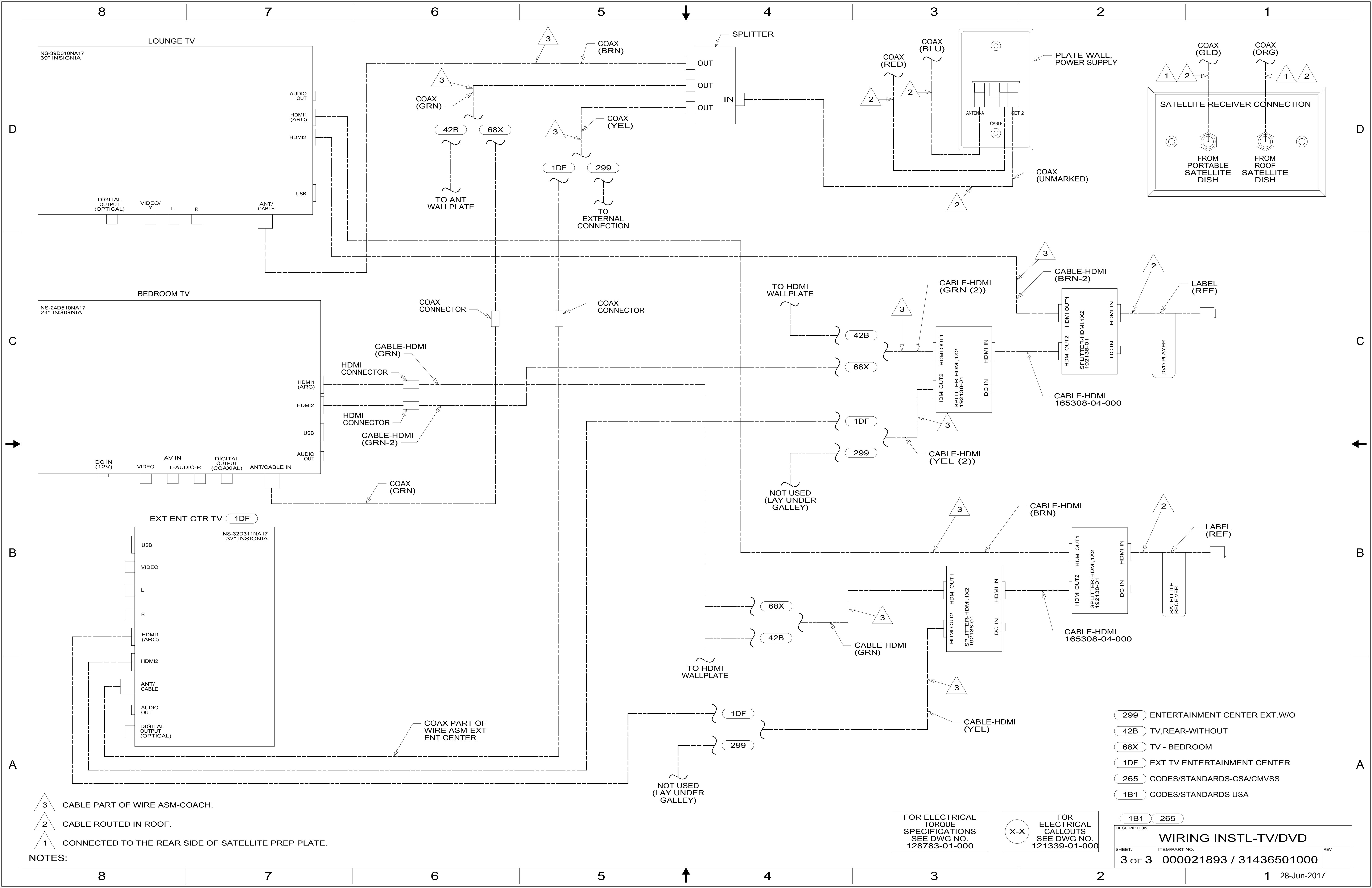
68X TV - BEDROOM

265 CODES/STANDARDS-CSA/CMVSS

1B1 CODES/STANDARDS USA

DESCRIPTION:	1B1 265 68Y	
WIRING INSTL-TV/DVD		
SHEET:	ITEM/PART NO.:	REV:
2 OF 3	000021893 / 31436501000	

8 7 6 5 4 3 2 1 28-Jun-2017



- 3 CABLE PART OF WIRE ASM-COACH.
 2 CABLE ROUTED IN ROOF.
 1 CONNECTED TO THE REAR SIDE OF SATELLITE PREP PLATE.

NOTES:

FOR ELECTRICAL TORQUE SPECIFICATIONS SEE DWG NO. 128783-01-000

FOR ELECTRICAL CALLOUTS SEE DWG NO. 121339-01-000

- 299 ENTERTAINMENT CENTER EXT.W/O
- 42B TV,REAR-WITHOUT
- 68X TV - BEDROOM
- 1DF EXT TV ENTERTAINMENT CENTER
- 265 CODES/STANDARDS-CSA/CMVSS
- 1B1 CODES/STANDARDS USA

DESCRIPTION:		WIRING INSTL-TV/DVD	
SHEET:	ITEM/PART NO.:	REV:	
3 OF 3	000021893 / 31436501000		