

8

7

6

5

4

3

2

1



D

D

C

C

B

B

A

A

CABLE ASM-CHASSIS GND EXT (BLK)		133566-12-011
CABLE ASM-CHASSIS BATTERY DISCONNECT SUPPLY (RED)		141415-32-026
CABLE ASM-COACH BATTERY DISCONNECT SUPPLY (YEL)		141416-52-024
CABLE ASM-COACH BATTERY GND (BLK)		133567-12-008
CABLE ASM-GENERATOR (GRN)		141415-42-078
CABLE ASM-GENERATOR GND (BLK)	40N	133566-12-008
LEVELING SYSTEM POWER CABLE (BLU)	60M	141415-29-021
LEVELING SYSTEM GND CABLE (BLK)	60M	133566-12-008
CABLE ASM-STARTER (RED)		141416-32-010
CABLE ASM-COACH BATTERY FUSE		141416-52-003
CABLE ASM-CHASSIS BATTERY FUSE		141415-32-003

- 40N GEN-4KW-ONAN GAS-MICROQUIET
- 60M HYDRAULIC LEVEL JACKS-AUTO
- 265 CODES/STANDARDS-CSA/CMVSS
- 1B1 CODES/STANDARDS USA

WINNEBAGO[®]
COPYRIGHT 2016 WINNEBAGO INDUSTRIES, INC.

DSNR:		ALL DIMENSIONS ARE IN MILLIMETERS	
DFFR:			
UNSPECIFIED TOLERANCES:	MATERIAL:		
WHOLE DIM (X) :		3	
ONE-PLACE (X.X) :		1.5	
TWO-PLACE (X.XX) :		0.50	
ANGLE :		1°	
REFER TO ES0018 FOR FASTENER TIGHTENING GUIDELINES		WEIGHT: (LBS)	FIRST USED:
			17 E32YE
BATTERY INSTL			
SHEET:	ITEM/PART NO.:	REV:	
1 OF 4	000021892 / 31436401000		
REF:		1 18-Oct-2017	

FOR ELECTRICAL TORQUE SPECIFICATIONS SEE DWG NO. 128783-01-000

FOR ELECTRICAL CALLOUTS SEE DWG NO. 121339-01-000

8

7

6

5

4

3

2

1

18-Oct-2017

8 7 6 5 4 3 2 1

D

D

C

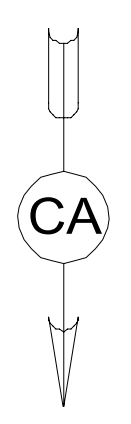
C

B

B

A

A



CHASSIS SUPPLIED
GROUND CABLE 2

FUSE HOLDER
188460-01-000
FUSE-400A
188461-03-000
SCREW
G42-04-12U (2)

CABLE ASM-COACH
BATTERY FUSE (YEL)

FUSE HOLDER
188460-01-000
FUSE-400A
188461-03-000
SCREW
G42-04-12U (2)

CABLE ASM (RED)
141415-32-002

CABLE ASM-CHASSIS GND EXT (BLK)
TO GROUND BOLT ON FRAME RAIL 5

CABLE ASM-STARTER (RED)
TO FUSE ON FRONT
RIGHT FRAME RAIL 5

CABLE ASM-CHASSIS BATTERY
DISCONNECT SUPPLY (RED)
TO CHASSIS ELECTRICAL BOX 3

CABLE ASM-CHASSIS
BATTERY FUSE (RED)

3 CABLE ASM-COACH BATTERY
DISCONNECT SUPPLY (YEL)
TO CHASSIS ELECTRICAL BOX

CABLE ASM-COACH
BATTERY GND (BLK)

TERMINAL-BATTERY
47441-01-000

1 BATTERY
(CHASSIS SUPPLIED)
TIEDOWN ASM
160014-03-CHT
BOLT
51387-06-000 (2)
NUT
D39-06-00B (2)
WASHER-RUBBER
184541-01-CHT (2)

4 CABLE ASM (BLK)
133566-11-002

BATTERY
63739-01-000 (2)
TIEDOWN ASM
160014-03-CHT (2)
BOLT
51387-06-000 (2)
NUT
D39-06-00B (3)
WASHER-RUBBER
184541-01-CHT (2)

- 5 SEE WIRING INSTL-CHASSIS FOR ADDITIONAL INFORMATION.
- 4 USE TWO NUTS HERE TO ACCOUNT FOR BATTERY HEIGHT DIFFERENCE.
- 3 SEE CHASSIS ELECTRICAL BOX ASM FOR ADDITIONAL INFORMATION.
- 2 LOCATE CHASSIS SUPPLIED GROUND CABLE, REDUCE LENGTH TO 700MM AND ADD TERMINAL 8348-01-000 TO THE CUT END.
- 1 SUPPLIED WITH CHASSIS.

NOTES:

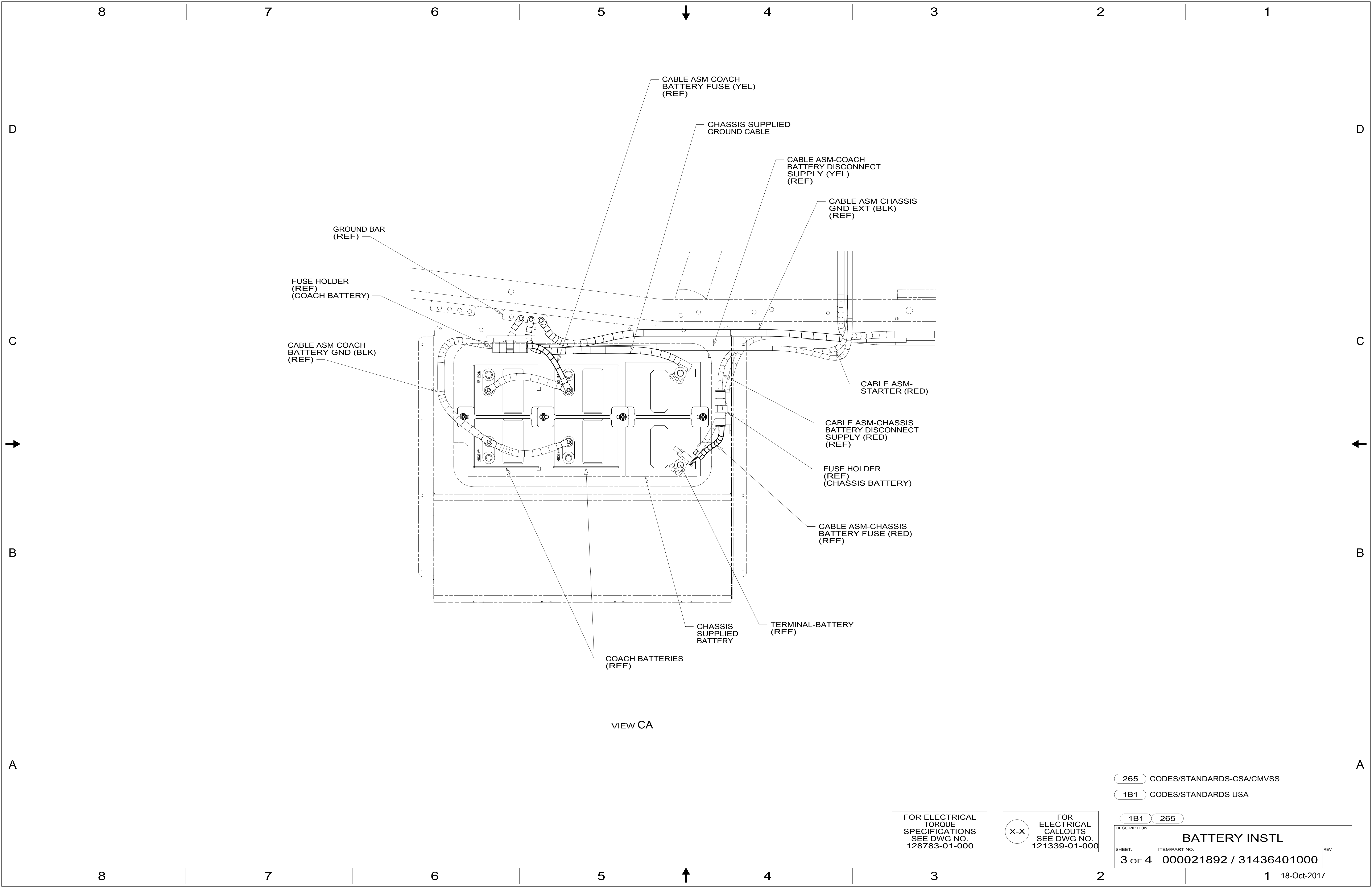
265 CODES/STANDARDS-CSA/CMVSS
1B1 CODES/STANDARDS USA

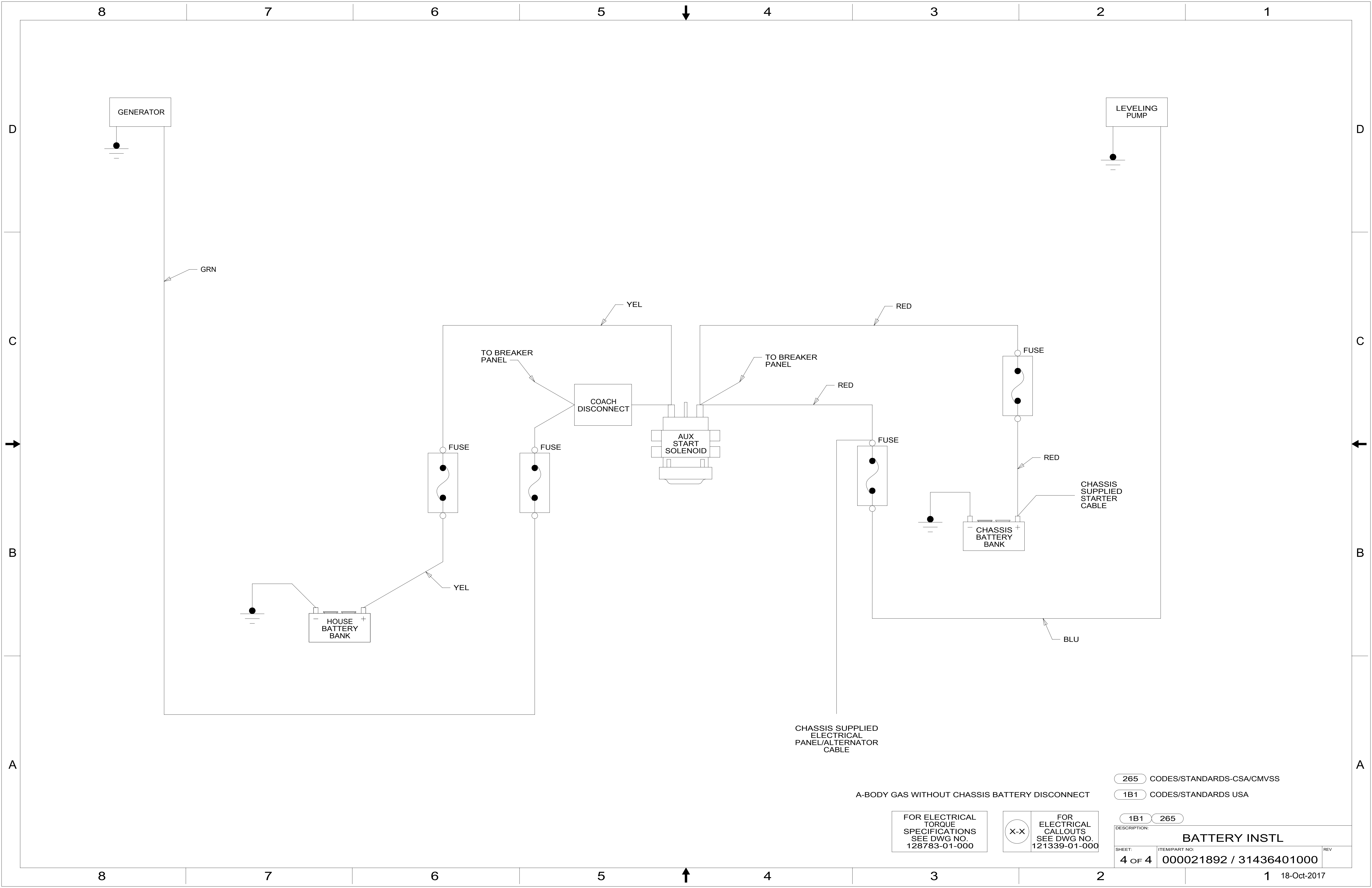
FOR ELECTRICAL
TORQUE
SPECIFICATIONS
SEE DWG NO.
128783-01-000

FOR
ELECTRICAL
CALLOUTS
SEE DWG NO.
121339-01-000

DESCRIPTION: BATTERY INSTL	
SHEET: 2 OF 4	ITEM/PART NO: 000021892 / 31436401000
REV 1 18-Oct-2017	

8 7 6 5 4 3 2 1





A-BODY GAS WITHOUT CHASSIS BATTERY DISCONNECT

FOR ELECTRICAL TORQUE SPECIFICATIONS SEE DWG NO. 128783-01-000

X-X

FOR ELECTRICAL CALLOUTS SEE DWG NO. 121339-01-000

- 265 CODES/STANDARDS-CSA/CMVSS
- 1B1 CODES/STANDARDS USA

DESCRIPTION:		1B1 265	
BATTERY INSTL			
SHEET:	ITEM/PART NO.:	REV	
4 OF 4	000021892 / 31436401000		