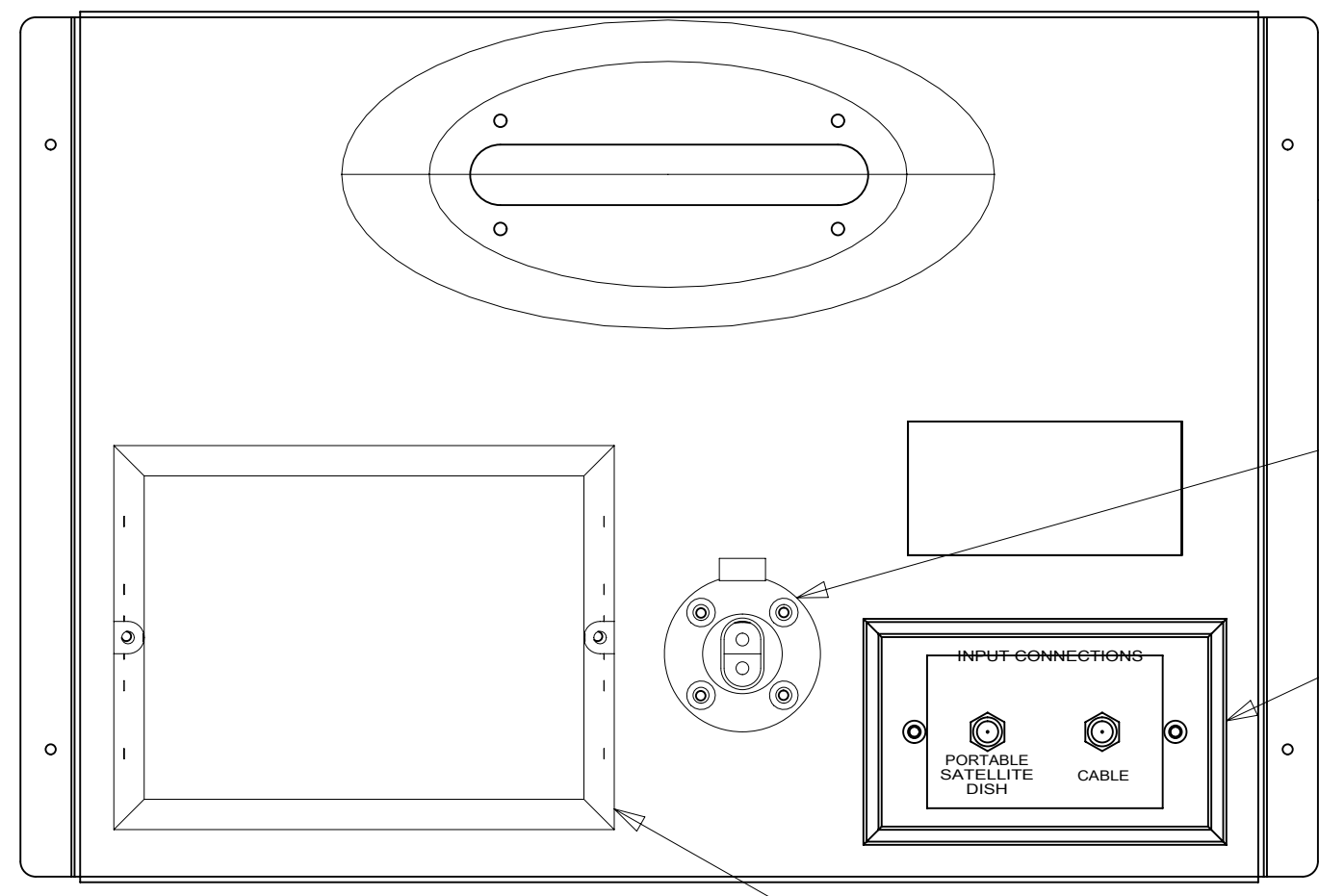


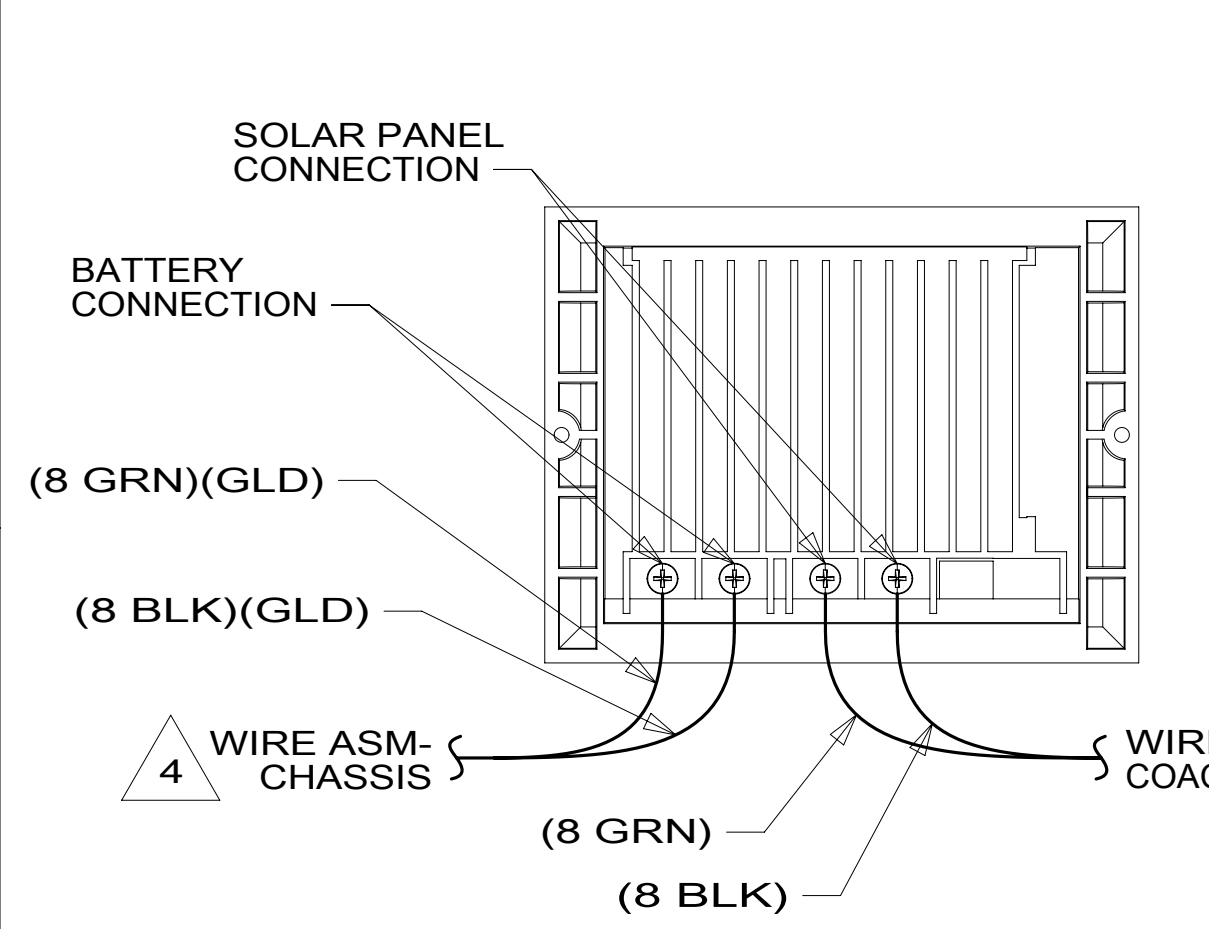
8 7 6 5 4 3 2 1



29W
282

282

282



TO GROUND BAR

TO SLIDEOUT CONTROL

TO GROUND BAR

TO GROUND BAR

TO GROUND BAR

TO GROUND BAR

TO GROUND BAR

TO GROUND BAR

TO GROUND BAR

TO GROUND BAR

TO GROUND BAR

TO GROUND BAR

TO GROUND BAR

TO GROUND BAR

TO GROUND BAR

TECMA TANK SENSOR KIT
170062-03-000
TECMA SENSOR HARNESS
170062-05-000
CONNECT TANK
SENSORS TO TOILET
ROUTE WITH COACH
HARNESS TO TOILET

WIRE ASM-MAIN
HOLDING
151317-02-000

WIRE ASM-
AUX HOLDING
151316-02-000

BRACKET
185915-01-CHT
SCREW
G39-10-12U (4)

BRACKET
185915-01-CHT
SCREW
G39-10-12U (4)

2-PIN HOUSING
TO WATER PUMP

PANEL-RECEPTACLE
151376-01-CHT
SCREW
G67-10-12B (4)

BRACKET
185915-01-CHT
SCREW
G39-10-12U (4)

WIRE ASM-
TANK,WATER
151317-01-000

WIRE ASM-COACH
000022849 / 314574-01-000

MAIN DROP THROUGH FLOOR
TO MONITOR PANEL AND
ROOF CONNECTIONS

BRACKET
185915-01-CHT
SCREW
G39-10-12U (4)

THERMOSTAT
169741-14-CHT
SCREW
G11-06-08U (2)
LABEL
171639-02-CHT

CLAMP
10497-09-000 (2)
SCREW
G39-10-12U (2)
CONDUIT
41953-07-000 (5 FT)

BRACKET-ELECTRICAL
147793-02-CHT
SCREW
G39-08-12U (4)
RECEPTACLE-12V
132958-01-000
DETAIL EC

- 11E REFRIGERATOR/FREEZER PORTABL
- 282 SOLAR PANEL - 100 WATT
- 29W SOLAR PANEL/BATTERY CHRGR W/O
- 265 CODES/STANDARDS-CSA/CMVSS
- 1B1 CODES/STANDARDS USA

1B1 265



DSNR:		ALL DIMENSIONS ARE IN MILLIMETERS	
DFFR:			
UNSPECIFIED TOLERANCES:		MATERIAL:	
WHOLE DIM (X)	± 3		
ONE-PLACE (X.X)	± 1.5		
TWO-PLACE (X.XX)	± 0.50		
ANGLE	± 1°		
REFER TO ES0018 FOR FASTENER TIGHTENING GUIDELINES	WEIGHT: (LBS)	FIRST USED:	
			17 P40J

DESCRIPTION:
WIRING INSTL-BODY, 12V

SHEET:	ITEM/PART NO.:	REV:
1 OF 11	000021507 / 31425801000	

FOR ELECTRICAL
TORQUE
SPECIFICATIONS
SEE DWG NO.
128783-01-000

FOR
ELECTRICAL
CALLOUTS
SEE DWG NO.
121339-01-000

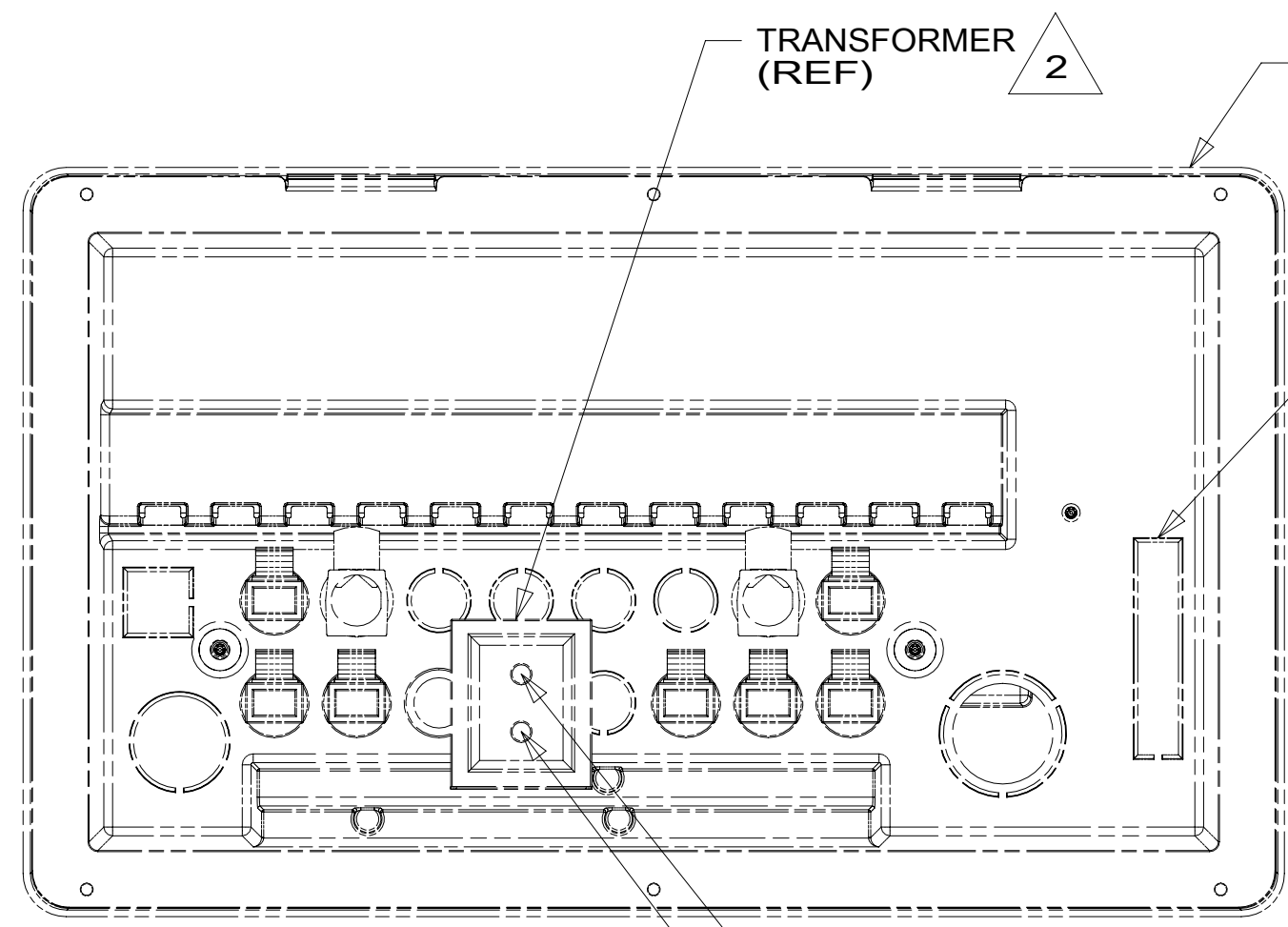
- 5 WIRE TO BE MARKED BY WRAP OF YEL TAPE 19 MM WIDE WITHIN 50 MM OF END.
- 4 WIRE TO BE MARKED BY WRAP OF GRN TAPE 19 MM WIDE WITHIN 50 MM OF END.
- 3 WIRE PASSES UP THRU FLOOR IN THIS AREA.

2. ROUTE TANK SENSOR WIRES SO THEY DO NOT PASS OVER SENSORS. USE WIRE TIE MOUNT 155366-01-000 AND WIRE TIE 8343-01-000 AS NEEDED. TANK SURFACE MUST BE CLEANED USING ISOPROPYL ALCOHOL AND PRIMED WITH PRIMER 94.

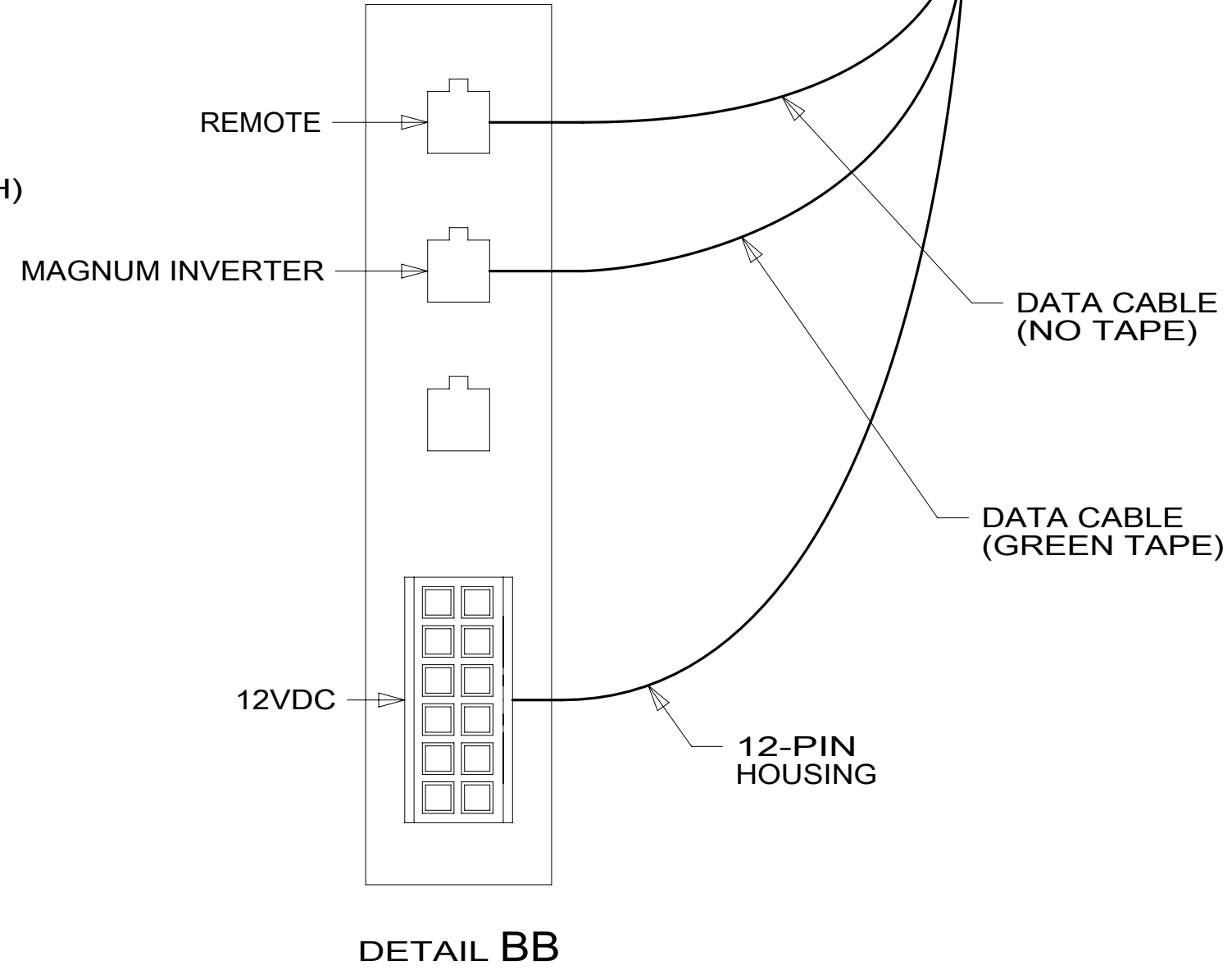
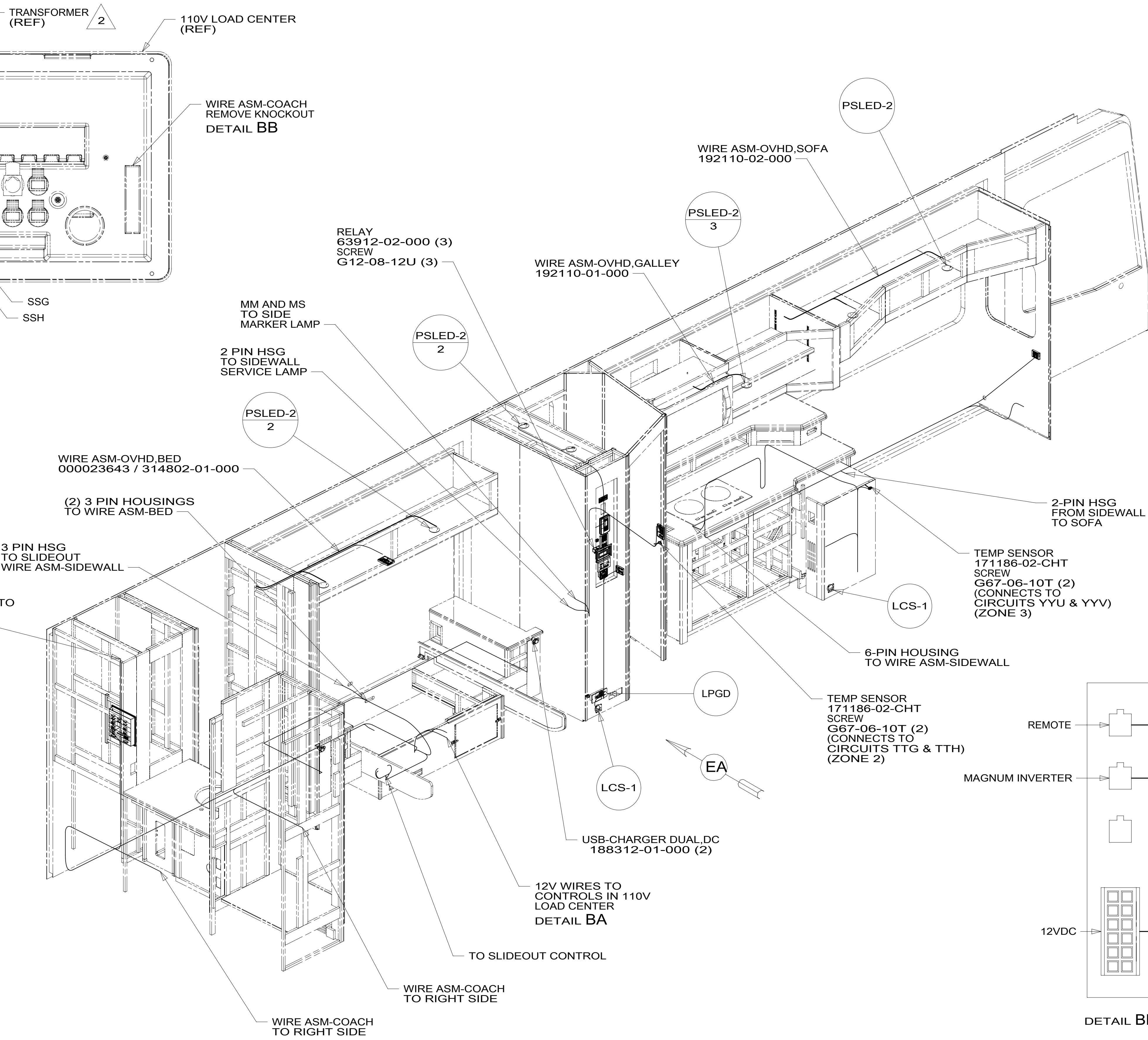
1. AT MINIMUM ALL WIRES TO BE SUPPORTED AND SECURED PER CODE REQUIREMENTS. USE CLAMP 10495 OR 10497 OR WIRE TIE 8343 OR 108046 AND SCREW G67-XX-XXX OR G56-XX-XXX AS APPROPRIATE FOR INSTALLATION.

NOTES:

8 7 6 5 4 3 2 1



VIEW BA



2 SEE LOAD CENTER/ATS ASM FOR ADDITIONAL INFORMATION.

1. AT MINIMUM ALL WIRES TO BE SUPPORTED AND SECURED PER CODE REQUIREMENTS. USE CLAMP 10495 OR 10497 OR WIRE TIE 8343 OR 108046 AND SCREW G67-XX-XXX OR G56-XX-XXX AS APPROPRIATE FOR INSTALLATION.

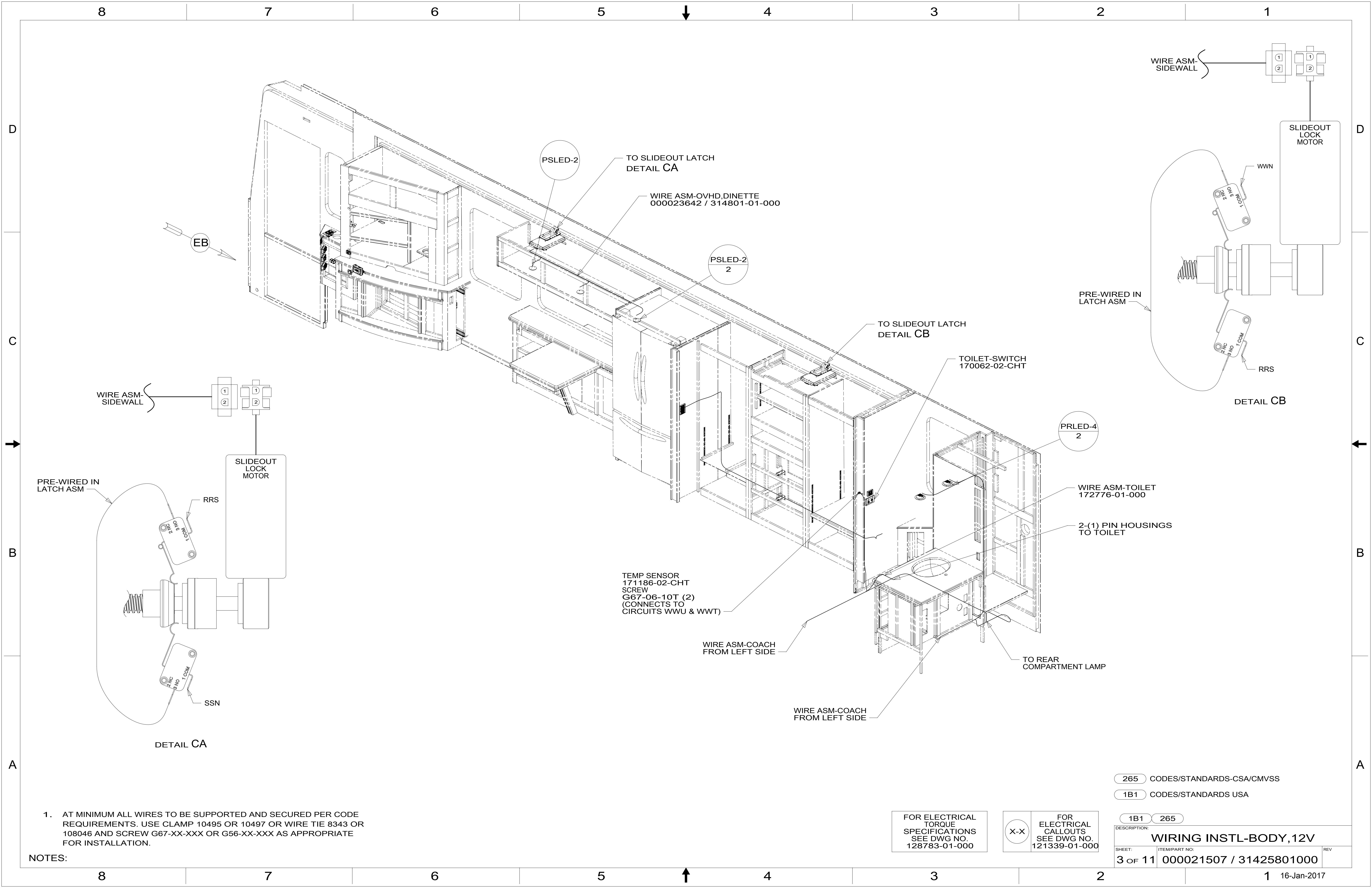
NOTES:

265 CODES/STANDARDS-CSA/CMVSS
1B1 CODES/STANDARDS USA

FOR ELECTRICAL TORQUE SPECIFICATIONS SEE DWG NO. 128783-01-000

FOR ELECTRICAL CALLOUTS SEE DWG NO. 121339-01-000

DESCRIPTION:	1B1 265	
WIRING INSTL-BODY, 12V		
SHEET:	ITEM/PART NO:	REV
2 OF 11	000021507 / 31425801000	



8

7

6

5

4

3

2

1

D

D

C

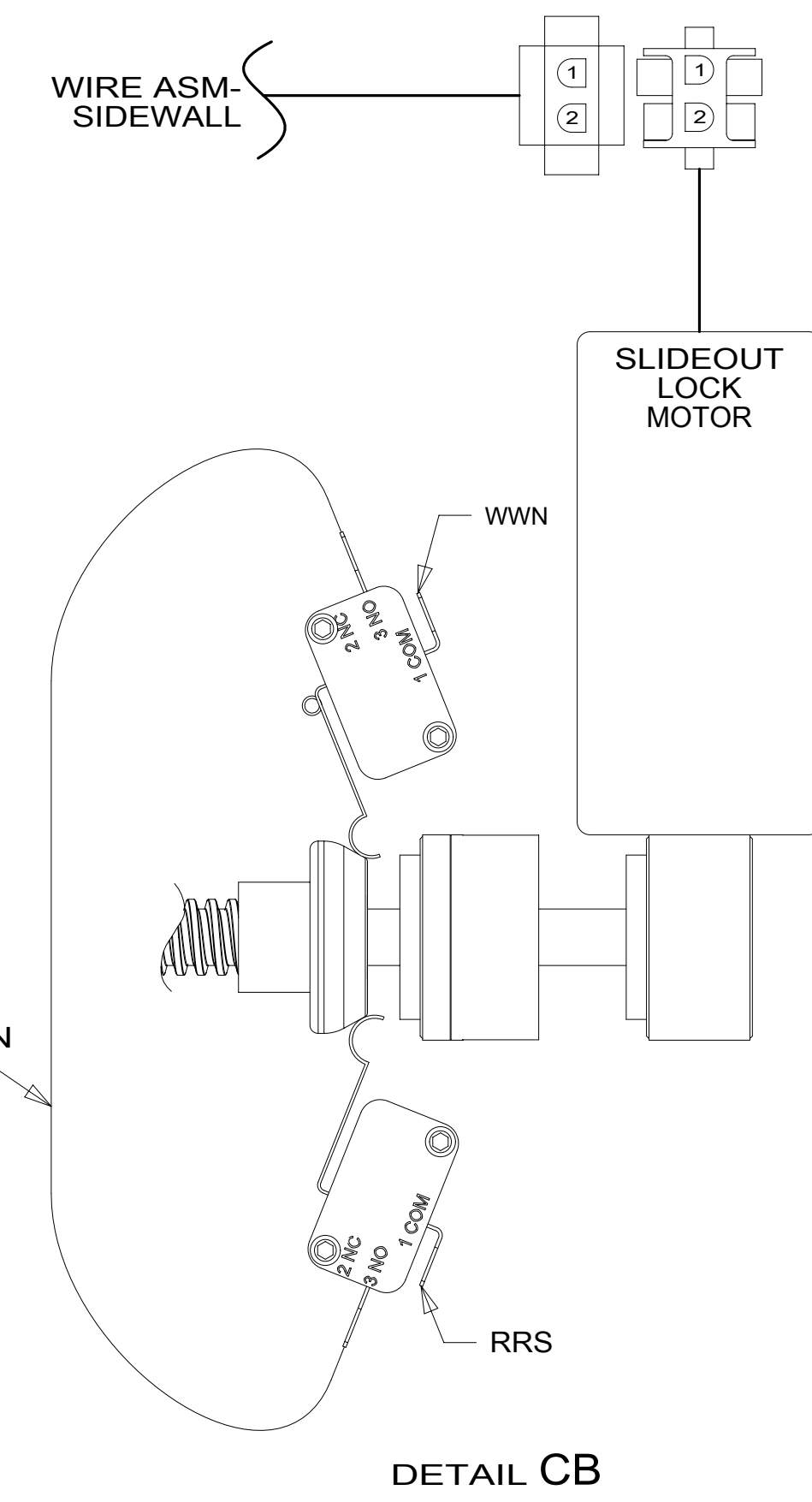
C

B

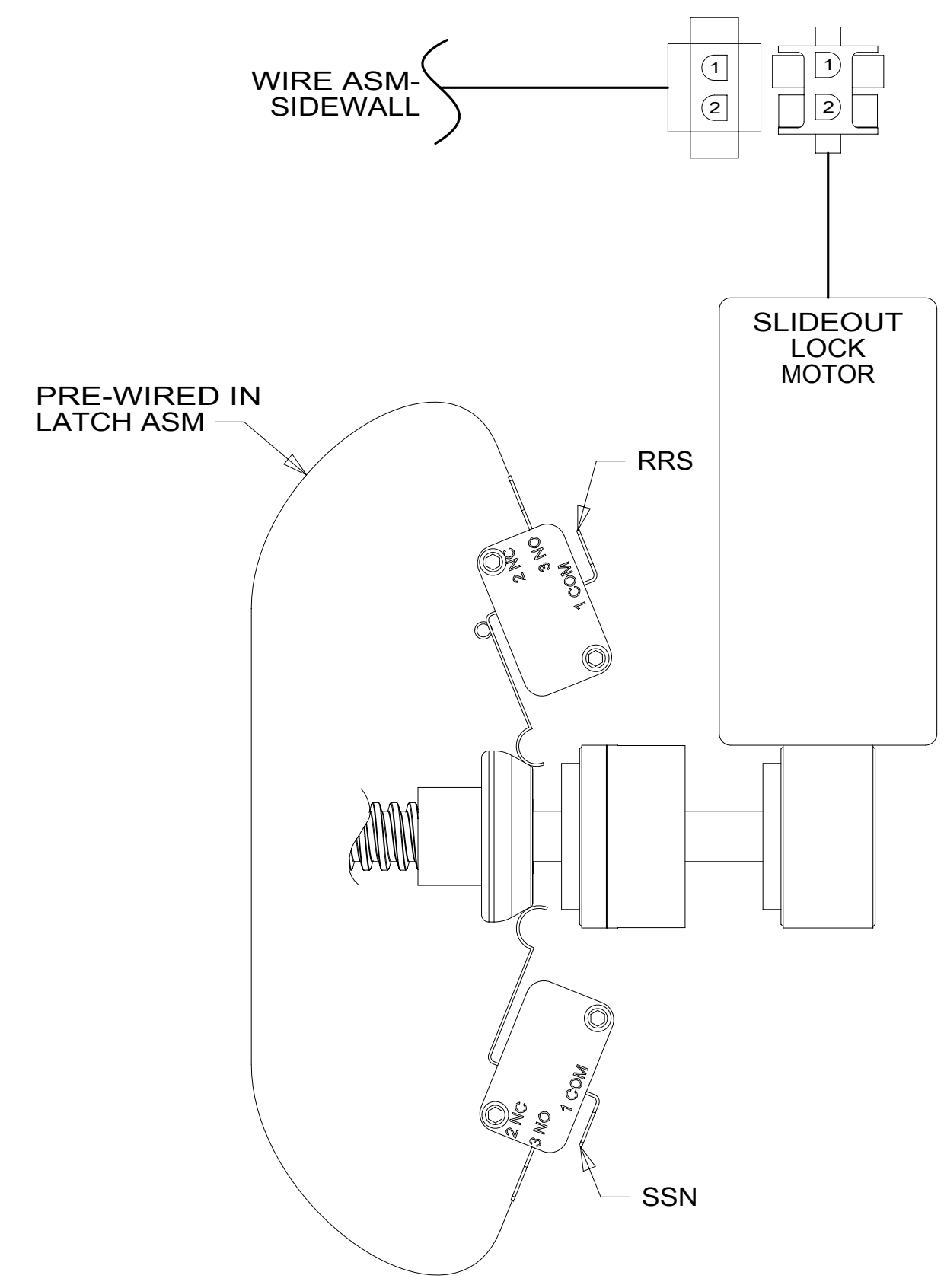
B

A

A



DETAIL CB



DETAIL CA

PSLED-2
TO SLIDEOUT LATCH
DETAIL CA

WIRE ASM-OVHD,DINETTE
000023642 / 314801-01-000

PSLED-2
2TO SLIDEOUT LATCH
DETAIL CBTOILET-SWITCH
170062-02-CHTPRLED-4
2WIRE ASM-TOILET
172776-01-0002-(1) PIN HOUSINGS
TO TOILETTEMP SENSOR
171186-02-CHT
SCREW
G67-06-10T (2)
(CONNECTS TO
CIRCUITS WWU & WWT)WIRE ASM-COACH
FROM LEFT SIDEWIRE ASM-COACH
FROM LEFT SIDETO REAR
COMPARTMENT LAMP

265 CODES/STANDARDS-CSA/CMVSS

1B1 CODES/STANDARDS USA

1B1 265

DESCRIPTION:
WIRING INSTL-BODY, 12V

SHEET: 3 OF 11 ITEM/PART NO: 000021507 / 31425801000 REV

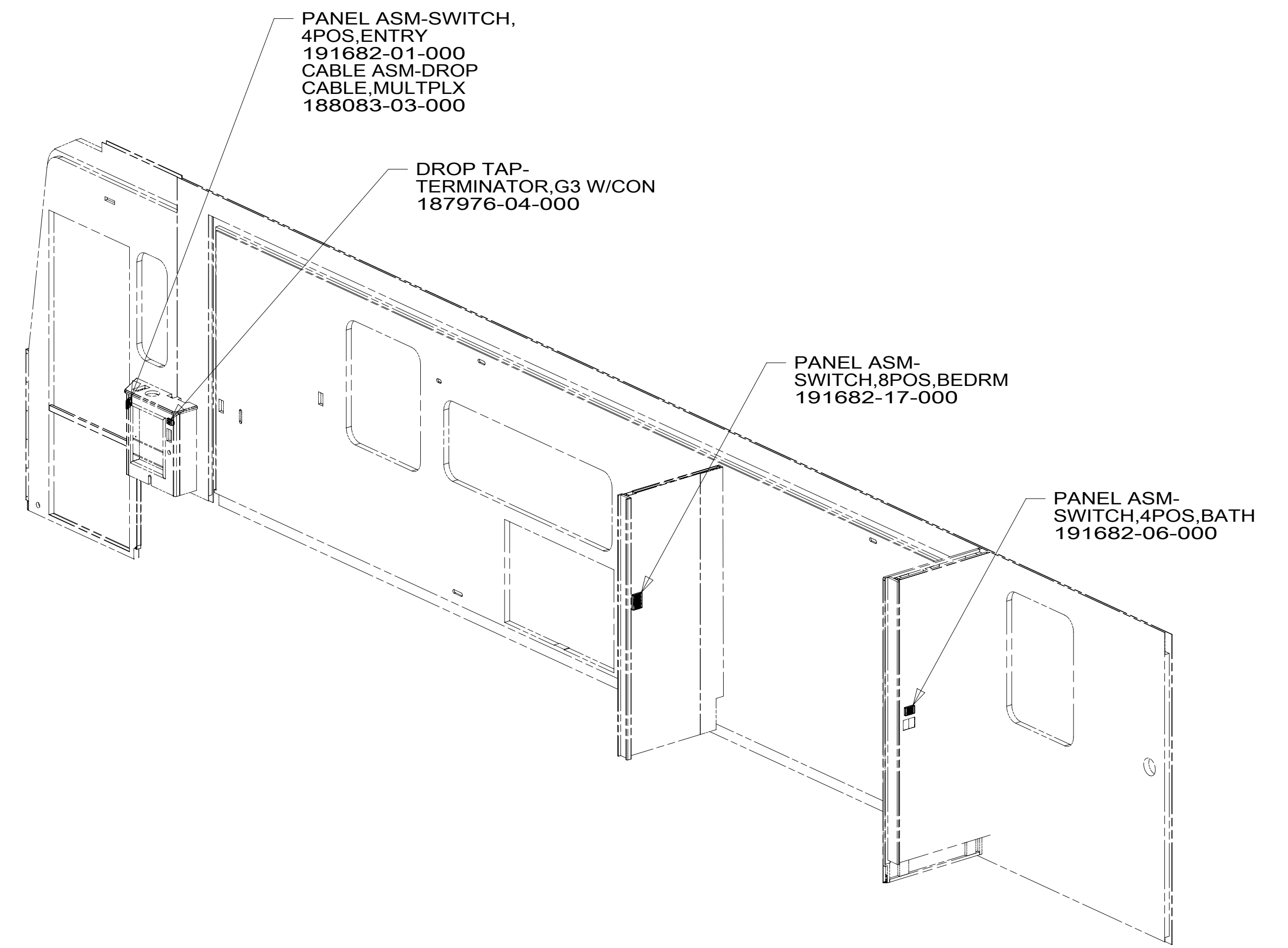
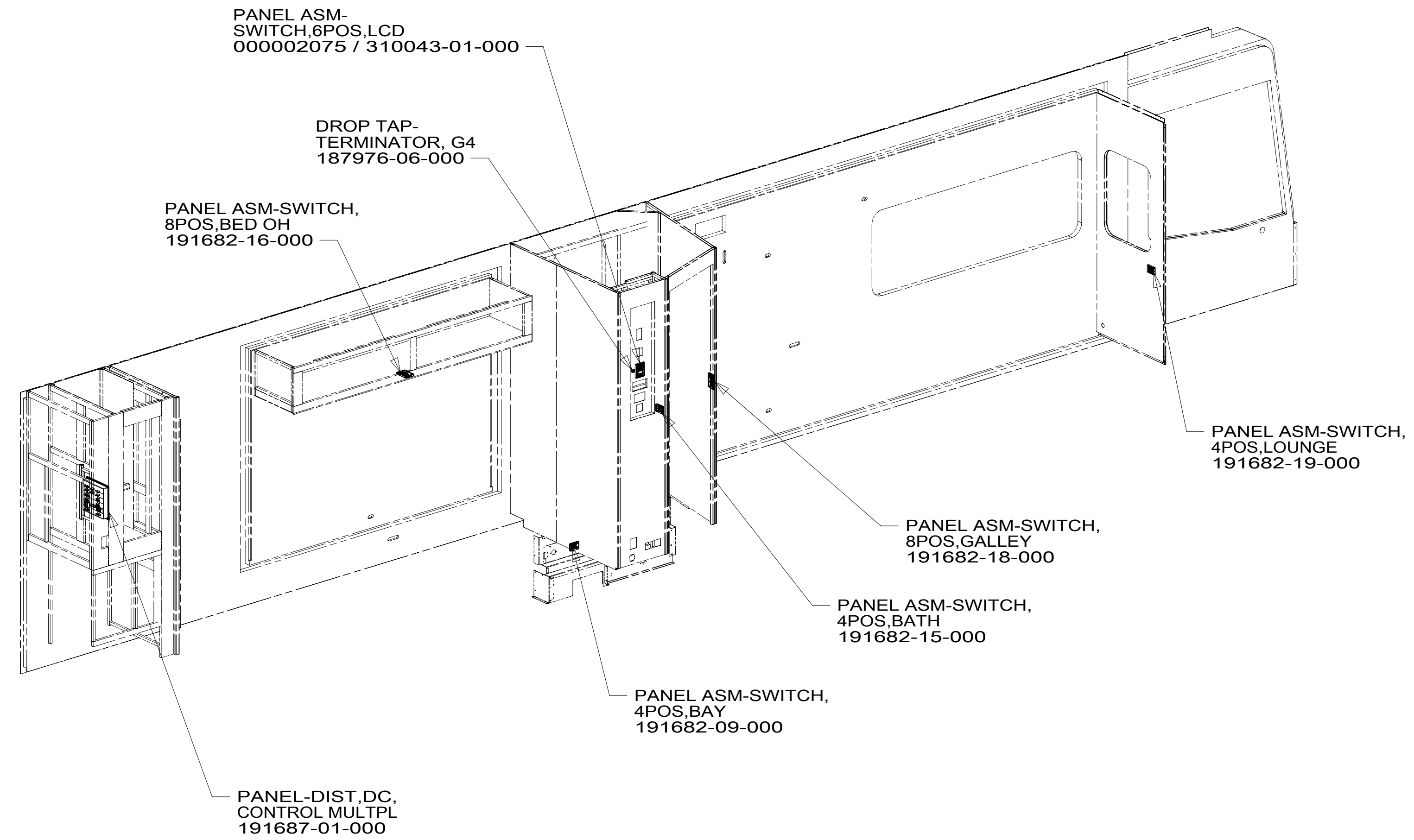
NOTES:
1. AT MINIMUM ALL WIRES TO BE SUPPORTED AND SECURED PER CODE REQUIREMENTS. USE CLAMP 10495 OR 10497 OR WIRE TIE 8343 OR 108046 AND SCREW G67-XX-XXX OR G56-XX-XXX AS APPROPRIATE FOR INSTALLATION.

FOR ELECTRICAL
TORQUE
SPECIFICATIONS
SEE DWG NO.
128783-01-000

FOR ELECTRICAL
CALLOUTS
SEE DWG NO.
121339-01-000

X-X

8 7 6 5 4 3 2 1



D
C
B
A

D
C
B
A

8 7 6 5 4 3 2 1

265 CODES/STANDARDS-CSA/CMVSS
1B1 CODES/STANDARDS USA

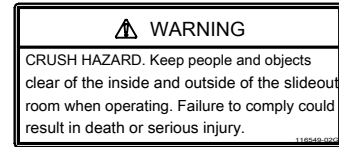
FOR ELECTRICAL
TORQUE
SPECIFICATIONS
SEE DWG NO.
128783-01-000

FOR
ELECTRICAL
CALLOUTS
SEE DWG NO.
121339-01-000

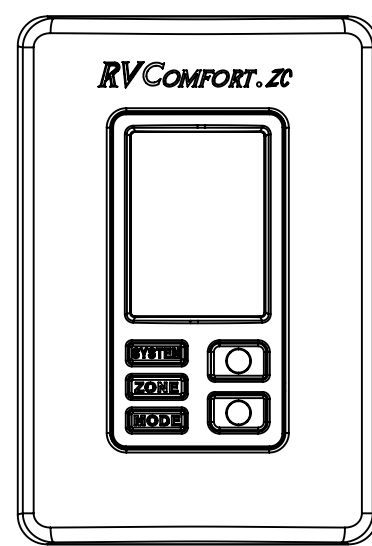
1B1 265
DESCRIPTION:
WIRING INSTL-BODY, 12V
SHEET: 4 OF 11 ITEM/PART NO: 000021507 / 31425801000 REV

16-Jan-2017

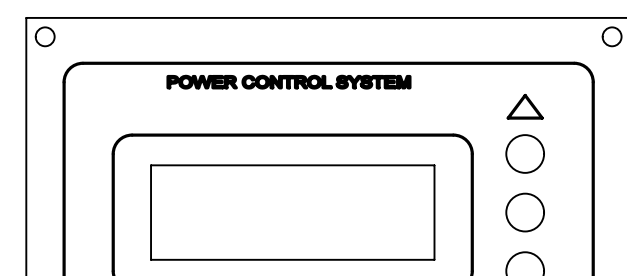
LABEL-WARNING,SLIDEOUT
116549-02-000



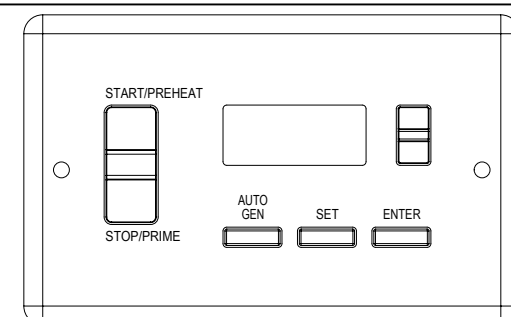
THERMOSTAT-ZONE,
AC & 2S HEAT REFRESH
171186-05-CHT
SCREW
G11-08-08U (2)
RELAY
63912-02-000 (2)



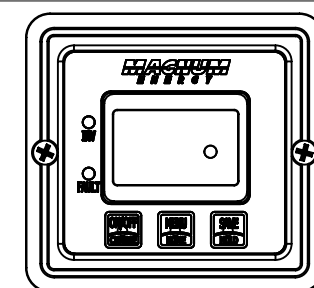
PANEL-MONITOR,
PCS 50 AMP
174384-06-000
SCREW
G11-08-08U (4)



MODULE-AUTO
GENERATOR START
158425-01-000
SCREW
G11-08-08U (2)



REMOTE PANEL
175385-02-000
SCREW
G11-08-08U (2)

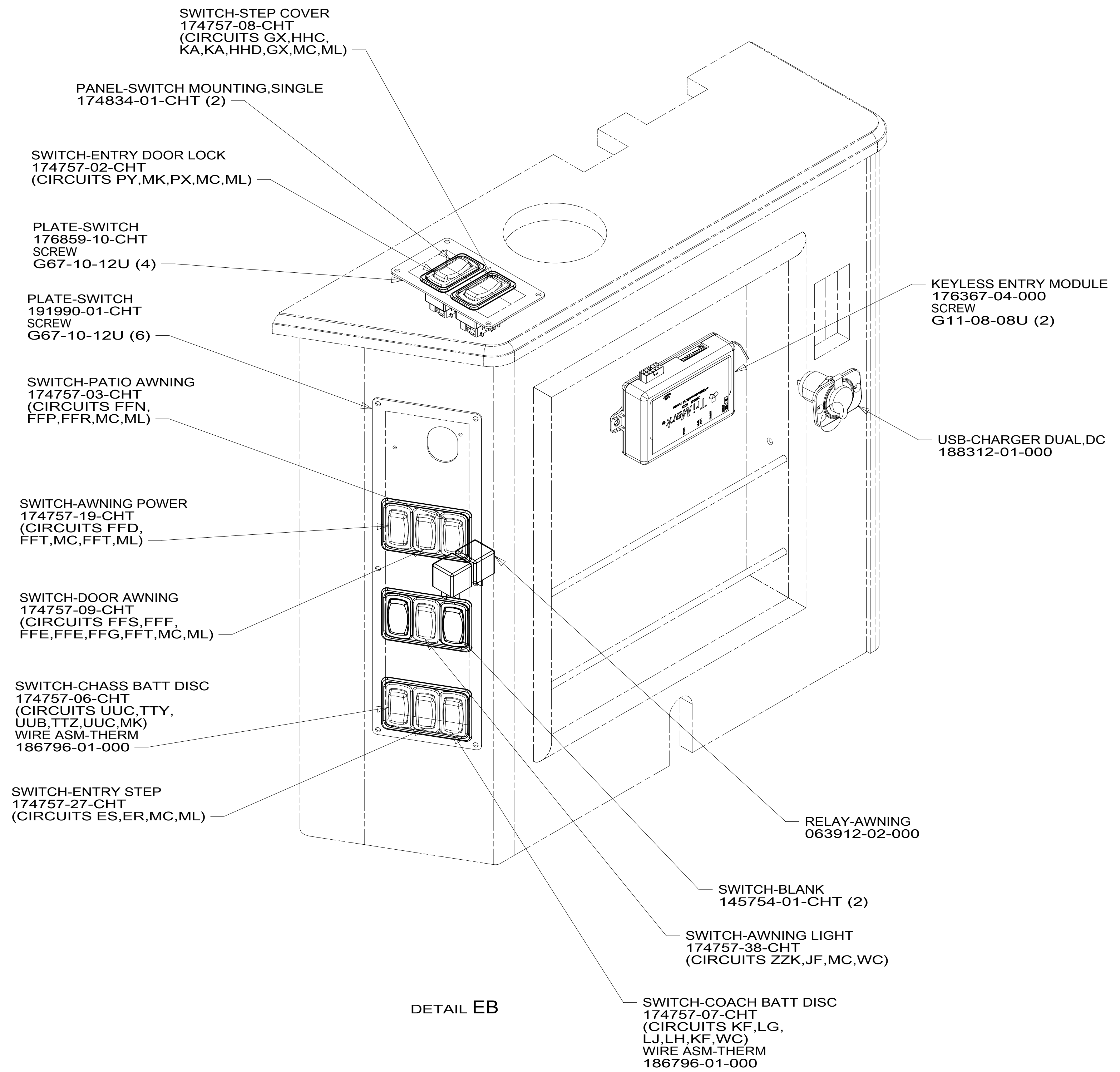


DETAIL EA

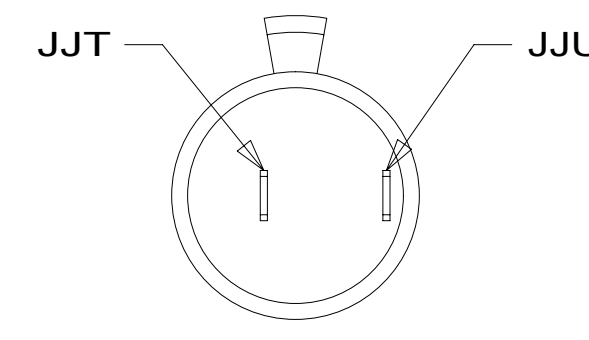
2 SET 'GEN TYPE' TO 'QD 6-8'.
SET 'SAFE TYPE' TO 'IGNITION'
SET 'SP SENSE' TO 'AFTER'
SEE OWNERS MANUAL FOR SETUP PROCEDURE.

1 SET 'BAT TYPE' TO 'AGM2'
SET 'BAT AHRS' TO '600 AH'
SET 'LBCO' TO '11VDC'
SEE OWNERS MANUAL FOR SETUP PROCEDURE.

NOTES:



DETAIL EB



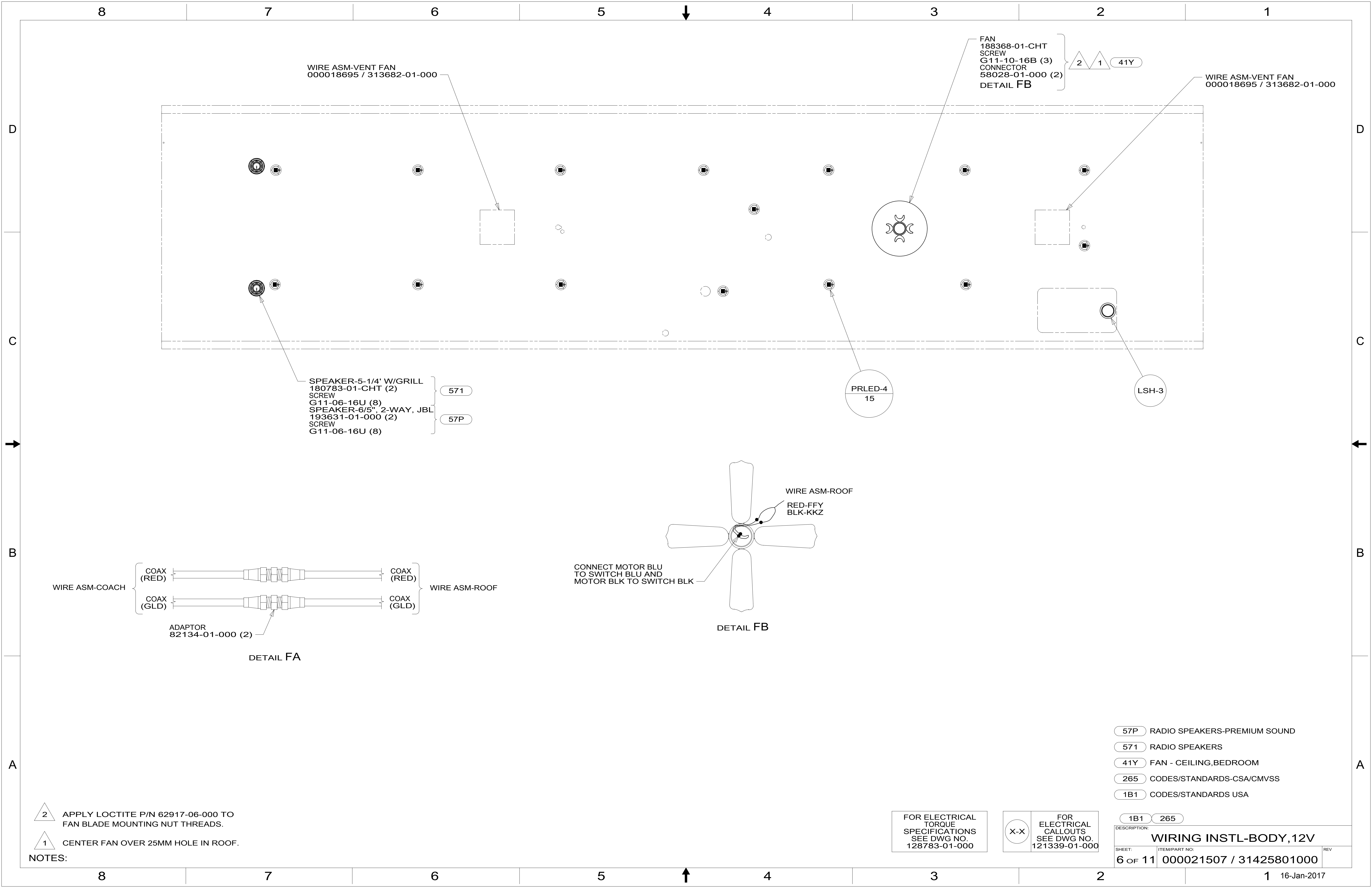
DETAIL EC

FOR ELECTRICAL
TORQUE
SPECIFICATIONS
SEE DWG NO.
128783-01-000

FOR ELECTRICAL
CALLOUTS
SEE DWG NO.
121339-01-000

265 CODES/STANDARDS-CSA/CMVSS
1B1 CODES/STANDARDS USA

DESCRIPTION: WIRING INSTL-BODY, 12V	
SHEET: 5 of 11	ITEM/PART NO: 000021507 / 31425801000
REV	



WIRE ASM-VENT FAN
000018695 / 313682-01-000

FAN
188368-01-CHT
SCREW
G11-10-16B (3)
CONNECTOR
58028-01-000 (2)
DETAIL FB

WIRE ASM-VENT FAN
000018695 / 313682-01-000

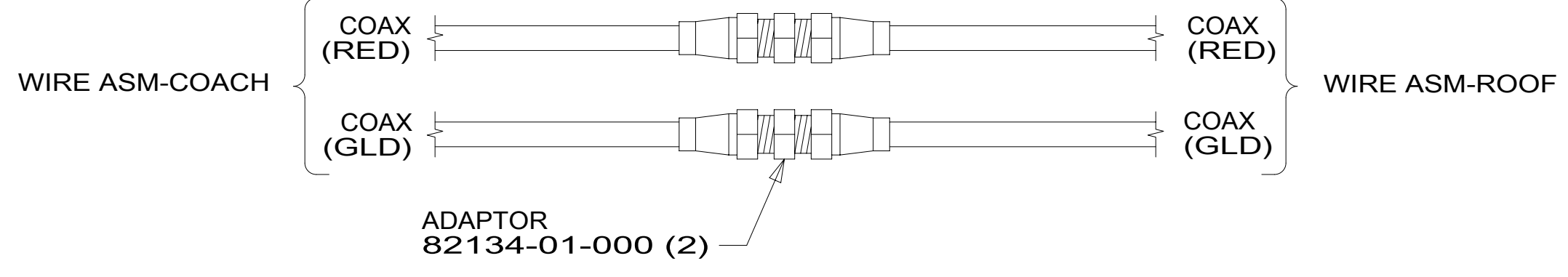
SPEAKER-5-1/4' W/GRILL
180783-01-CHT (2)
SCREW
G11-06-16U (8)
SPEAKER-6/5", 2-WAY, JBL
193631-01-000 (2)
SCREW
G11-06-16U (8)

571

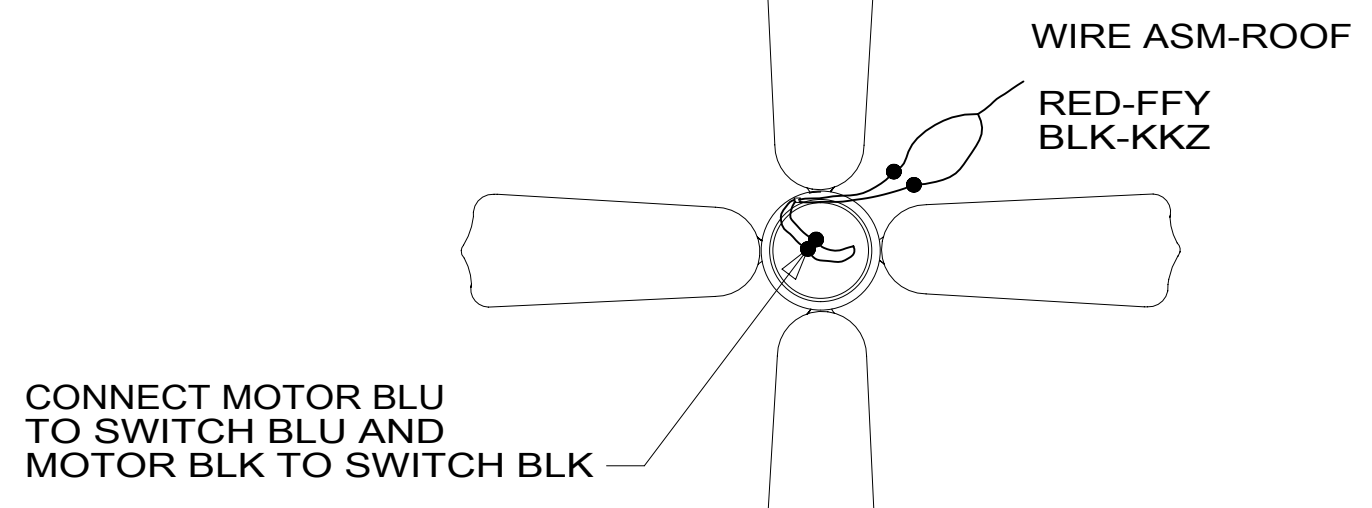
57P

PRLED-4
15

LSH-3



DETAIL FA



DETAIL FB

- 57P RADIO SPEAKERS-PREMIUM SOUND
- 571 RADIO SPEAKERS
- 41Y FAN - CEILING,BEDROOM
- 265 CODES/STANDARDS-CSA/CMVSS
- 1B1 CODES/STANDARDS USA

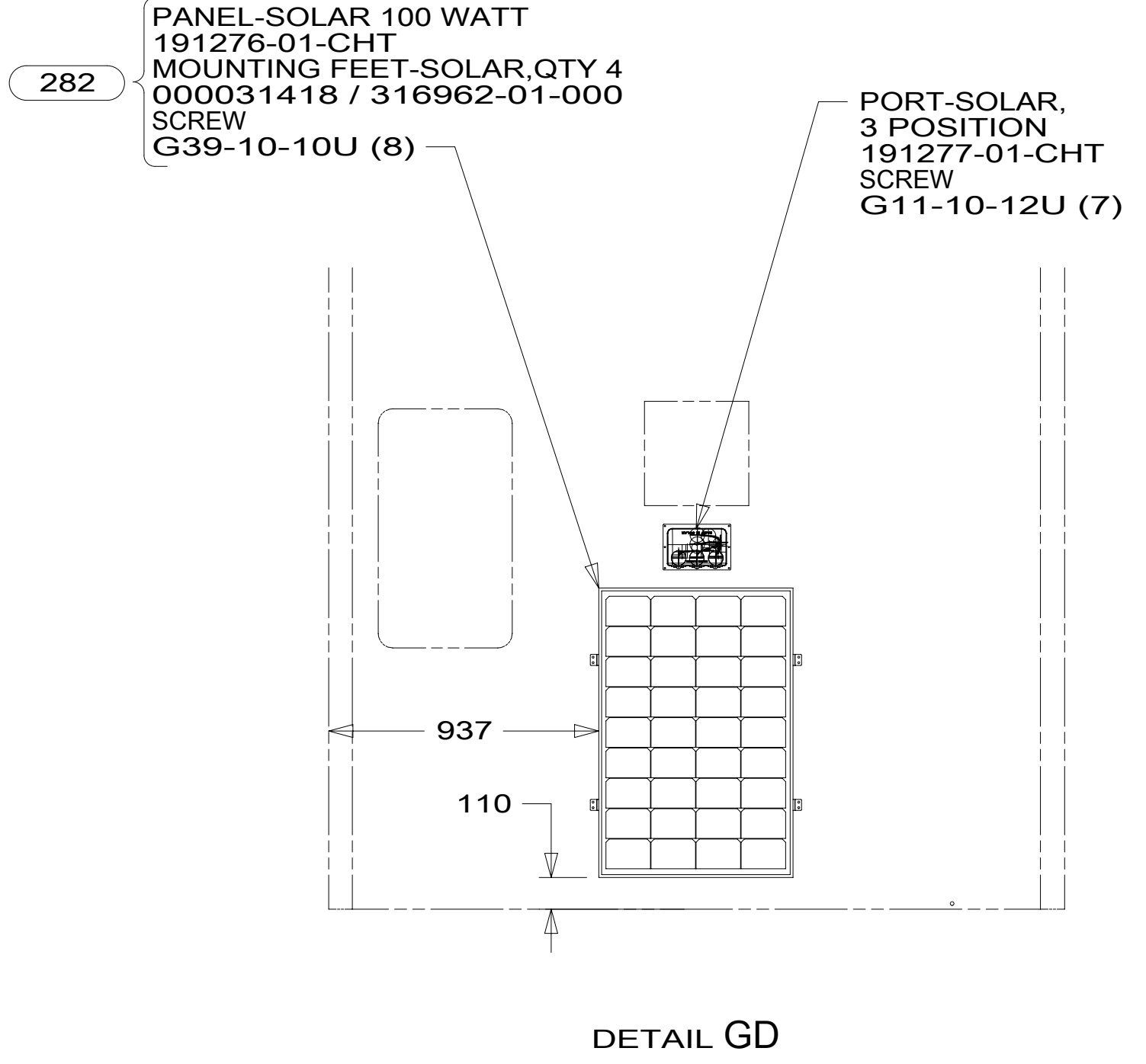
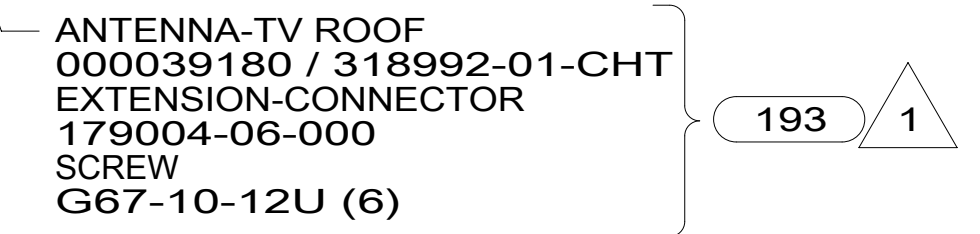
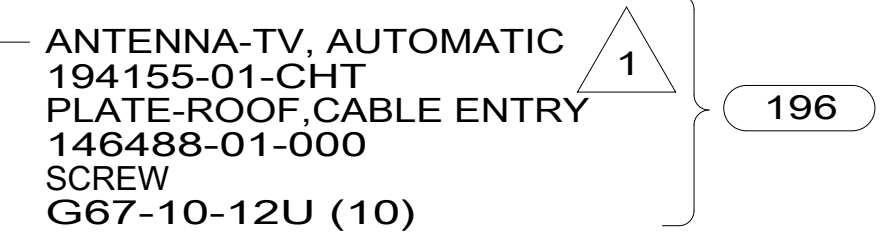
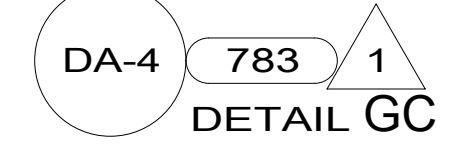
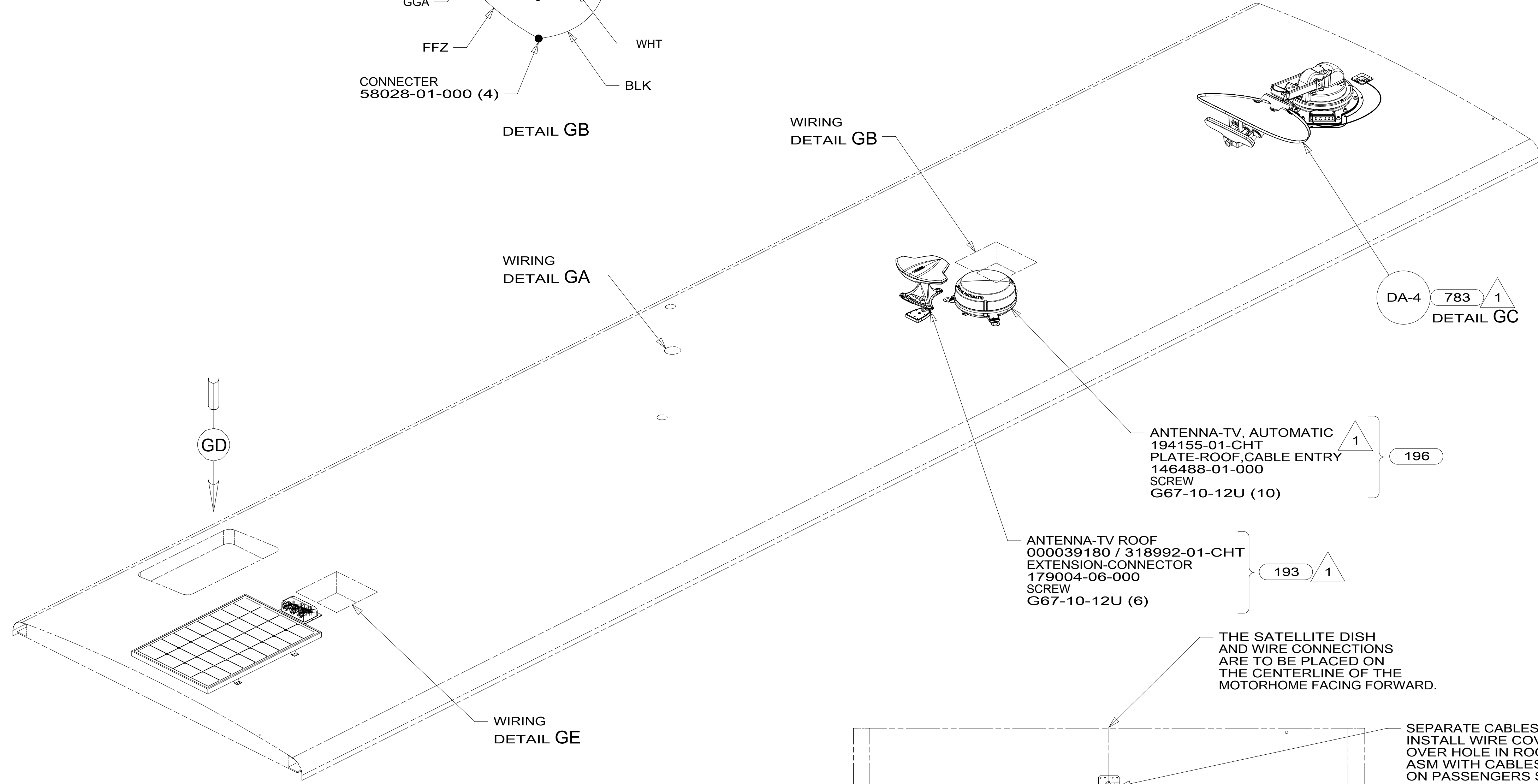
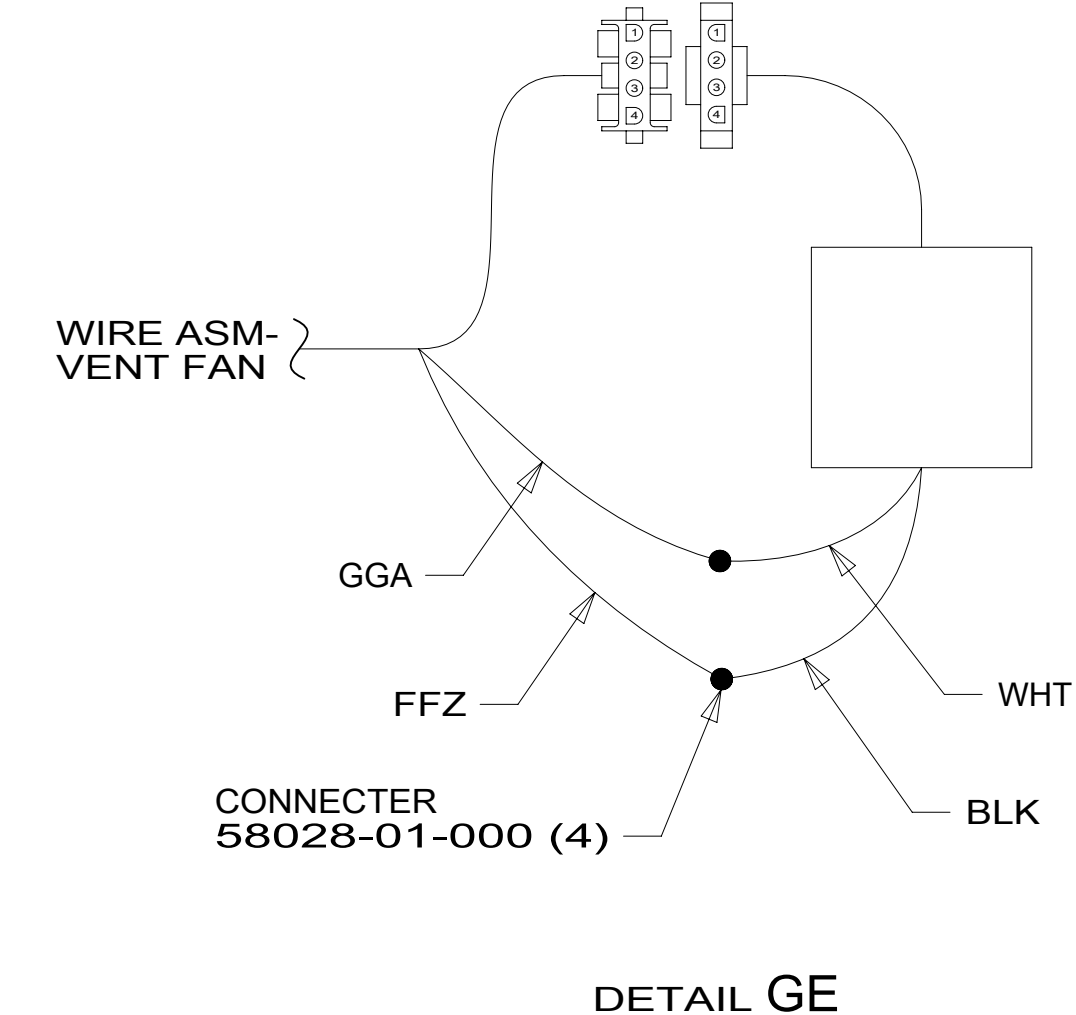
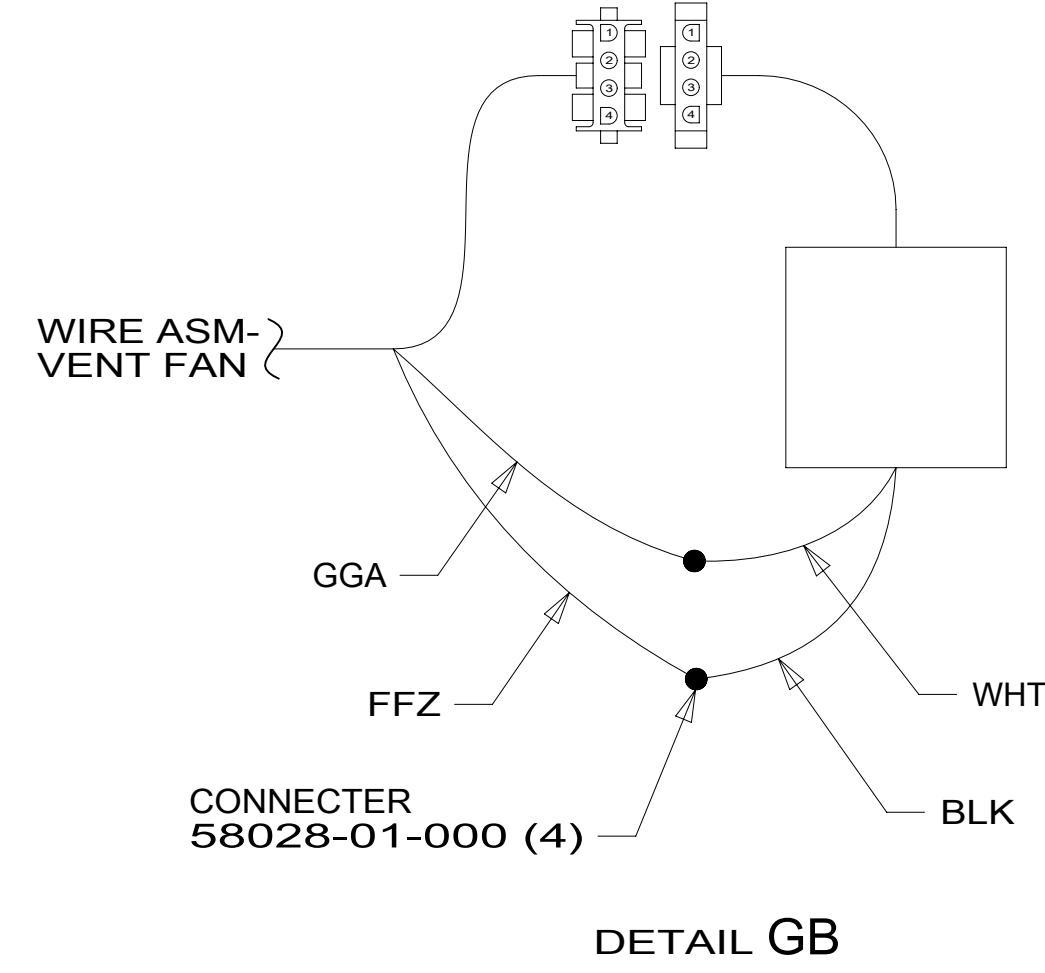
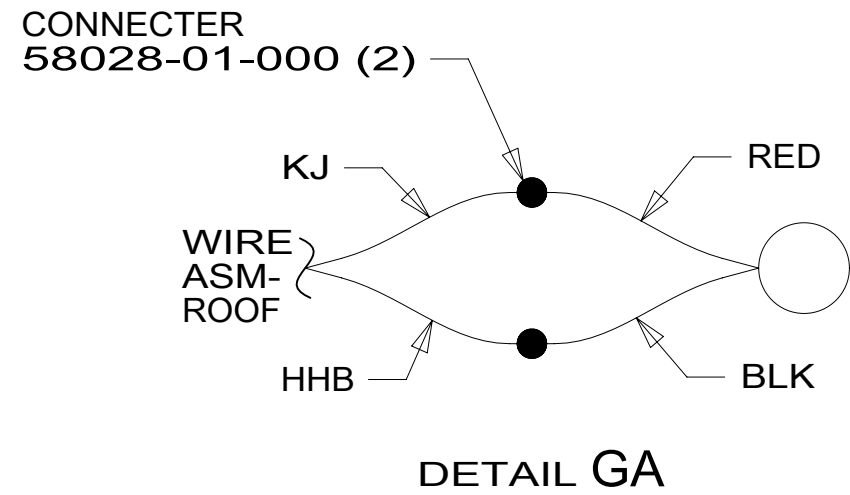
- NOTES:
- 2 APPLY LOCTITE P/N 62917-06-000 TO FAN BLADE MOUNTING NUT THREADS.
 - 1 CENTER FAN OVER 25MM HOLE IN ROOF.

FOR ELECTRICAL
TORQUE
SPECIFICATIONS
SEE DWG NO.
128783-01-000

FOR ELECTRICAL
CALLOUTS
SEE DWG NO.
121339-01-000

DESCRIPTION:	1B1 265	
WIRING INSTL-BODY, 12V		
SHEET:	ITEM/PART NO:	REV
6 OF 11	000021507 / 31425801000	

8 7 6 5 4 3 2 1

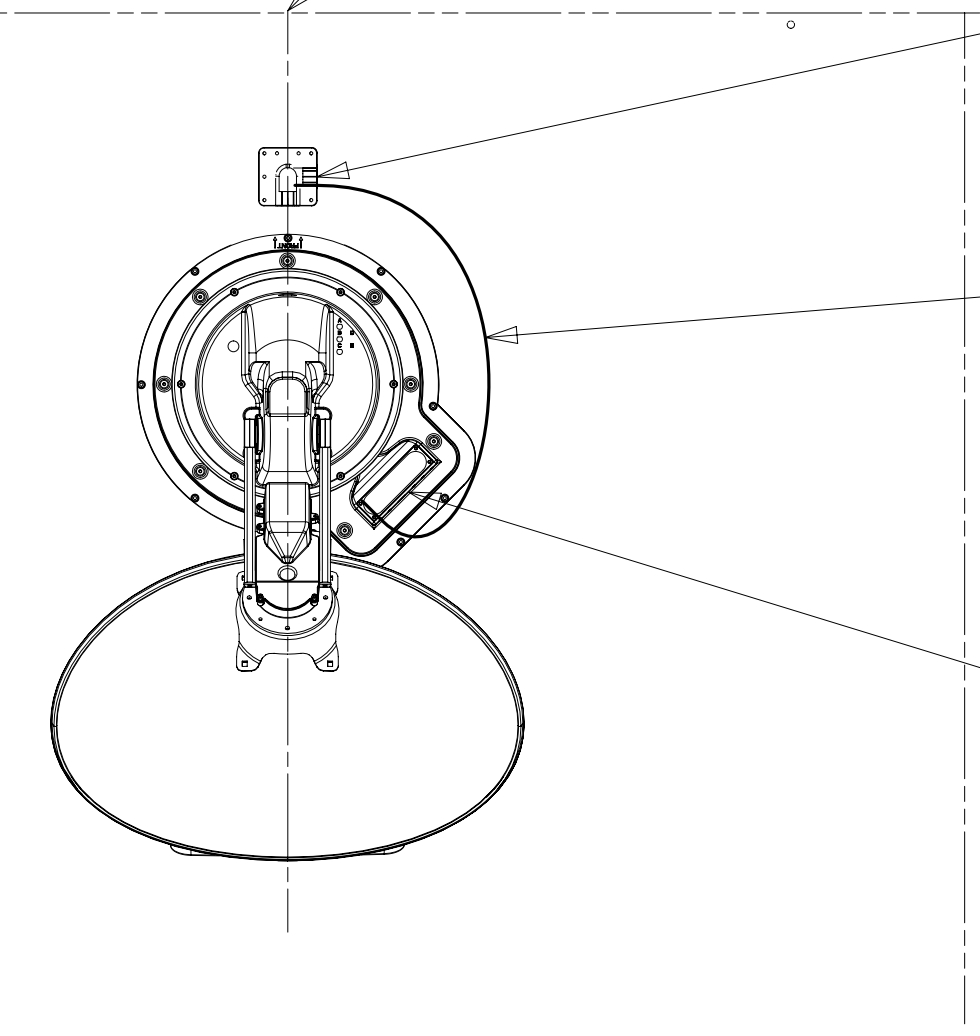


THE SATELLITE DISH AND WIRE CONNECTIONS ARE TO BE PLACED ON THE CENTERLINE OF THE MOTORHOME FACING FORWARD.

SEPARATE CABLES AND INSTALL WIRE COVER OVER HOLE IN ROOF ASM WITH CABLES EXITING ON PASSENGERS SIDE.

WHEN APPLYING ROOF SEALANT TO SATELLITE DISH, PLACE ROOF SEALANT HERE (APPROXIMATELY 75MM WIDE) AND PUSH THE CABLES INTO THE SEALANT TO STABILIZE THEM.

CONNECT CABLE ASM-COAX FROM ROOF ASM TO COAX CABLES ON SATELLITE DISH AND CONNECT 10' CABLE-DATA FROM ROOF ASM TO DATA CABLE FROM SATELLITE DISH AND PLACE ALL CONNECTIONS BACK INTO ROOF ASM.



FOR ELECTRICAL TORQUE SPECIFICATIONS SEE DWG NO. 128783-01-000

FOR ELECTRICAL CALLOUTS SEE DWG NO. 121339-01-000

- 196 TV ANT-AUTO,DIRECTIONAL AMPL
- 282 SOLAR PANEL - 100 WATT
- 783 SATELLITE HD TV SYSTEM AUTOC
- 193 TV ANTENNA-AMPLIFIED SYSTEM
- 265 CODES/STANDARDS-CSA/CMVSS
- 1B1 CODES/STANDARDS USA

1 SEE MANUFACTURER'S INSTALLATION FOR ADDITIONAL INFORMATION.

NOTES:

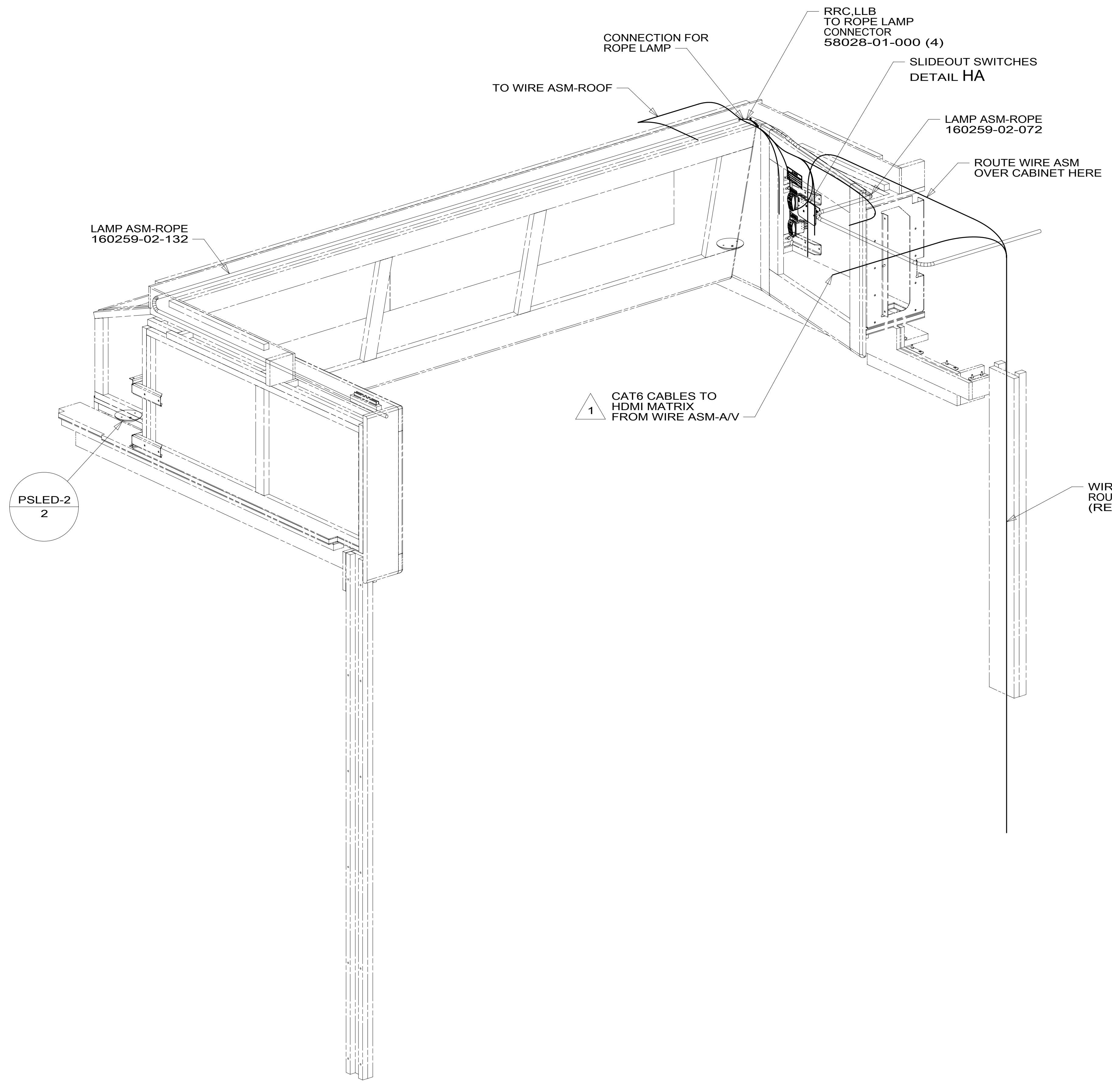
DESCRIPTION: WIRING INSTL-BODY, 12V		
SHEET: 7 of 11	ITEM/PART NO: 000021507 / 31425801000	REV

8 7 6 5 4 3 2 1 16-Jan-2017

8 7 6 5 4 3 2 1

D
C
B
A

D
C
B
A



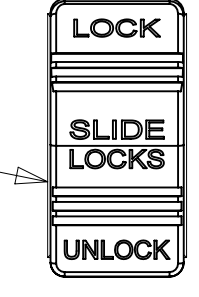
WARNING
 CRUSH HAZARD. Keep people and objects clear of the inside and outside of the slideout room when operating. Failure to comply could result in death or serious injury.

LABEL 116549-02-000

LABEL-SLIDEOUT, PASS.FRONT 163992-04-CHT

PASSENGER'S SIDE FRONT

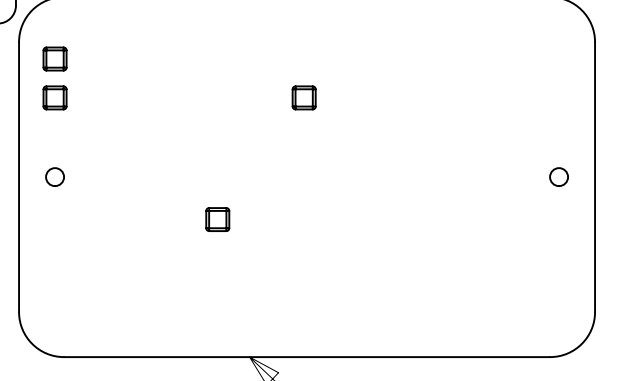
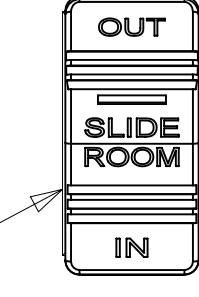
SWITCH 108357-06-000 ACTUATOR 108356-25-CHT CIRCUITS PPP,PPV,PPR,PPU



LABEL-SLIDEOUT, DRIVER,FRONT 163992-01-CHT

DRIVER'S SIDE FRONT

SWITCH 108357-18-CHT ACTUATOR 108356-31-CHT (CIRCUITS: DU,DT,DR,ABY,ABZ)



SWITCH ASM-SLIDEOUT 171341-01-000 SCREW 76790-05-000 (2) CIRCUITS SSN,HHE,NNN, NNP,HHE,NNR, WWR,WWP

DETAIL HA

1 SEE WIRING INSTL-CHASSIS FOR ADDITIONAL INFORMATION.
 NOTES:

FOR ELECTRICAL TORQUE SPECIFICATIONS SEE DWG NO. 128783-01-000

FOR ELECTRICAL CALLOUTS SEE DWG NO. 121339-01-000

265 CODES/STANDARDS-CSA/CMVSS
 1B1 CODES/STANDARDS USA

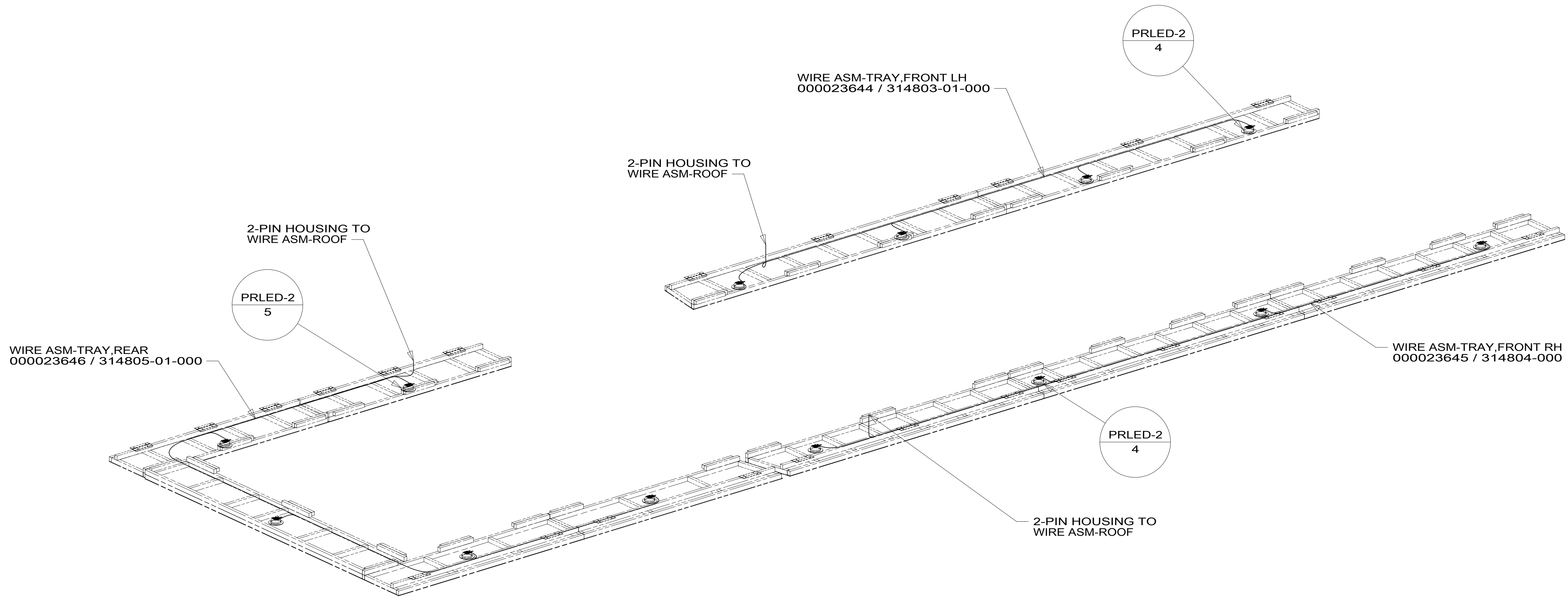
1B1 265
 DESCRIPTION: **WIRING INSTL-BODY, 12V**
 SHEET: 8 OF 11 ITEM/PART NO: 000021507 / 31425801000 REV

8 7 6 5 4 3 2 1 16-Jan-2017

8 7 6 5 4 3 2 1

D
C
B
A

D
C
B
A



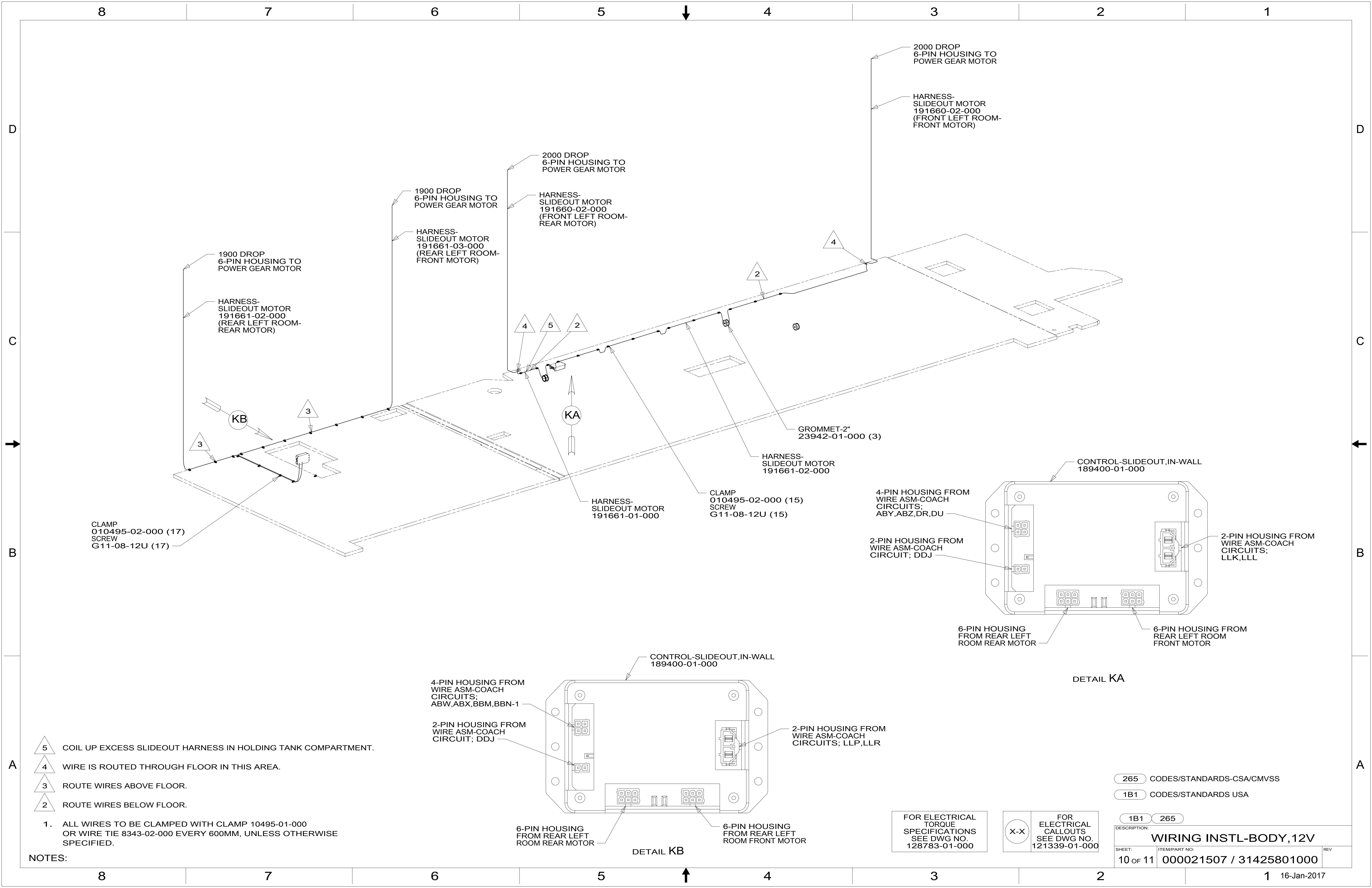
265 CODES/STANDARDS-CSA/CMVSS
 1B1 CODES/STANDARDS USA

FOR ELECTRICAL TORQUE SPECIFICATIONS SEE DWG NO. 128783-01-000

FOR ELECTRICAL CALLOUTS SEE DWG NO. 121339-01-000

1B1 265	
DESCRIPTION: WIRING INSTL-BODY, 12V	
SHEET: 9 OF 11	ITEM/PART NO: 000021507 / 31425801000
REV	

8 7 6 5 4 3 2 1 16-Jan-2017



- 5 COIL UP EXCESS SLIDEOUT HARNESS IN HOLDING TANK COMPARTMENT.
- 4 WIRE IS ROUTED THROUGH FLOOR IN THIS AREA.
- 3 ROUTE WIRES ABOVE FLOOR.
- 2 ROUTE WIRES BELOW FLOOR.

1. ALL WIRES TO BE CLAMPED WITH CLAMP 10495-01-000 OR WIRE TIE 8343-02-000 EVERY 600MM, UNLESS OTHERWISE SPECIFIED.

NOTES:

- 265 CODES/STANDARDS-CSA/CMVSS
- 1B1 CODES/STANDARDS USA

FOR ELECTRICAL TORQUE SPECIFICATIONS SEE DWG NO. 128783-01-000

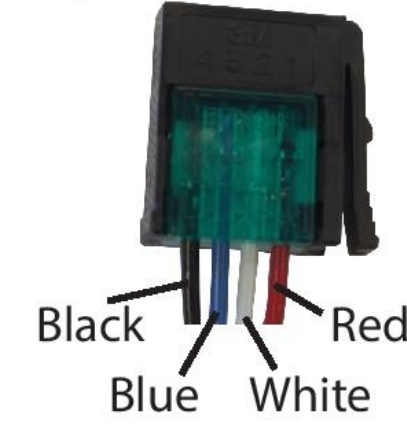
FOR ELECTRICAL CALLOUTS SEE DWG NO. 121339-01-000

DESCRIPTION:		1B1 265	
WIRING INSTL-BODY, 12V			
SHEET:	ITEM/PART NO.:	REV	
10 OF 11	000021507 / 31425801000		

WINNEBAGO - P40J - 2017

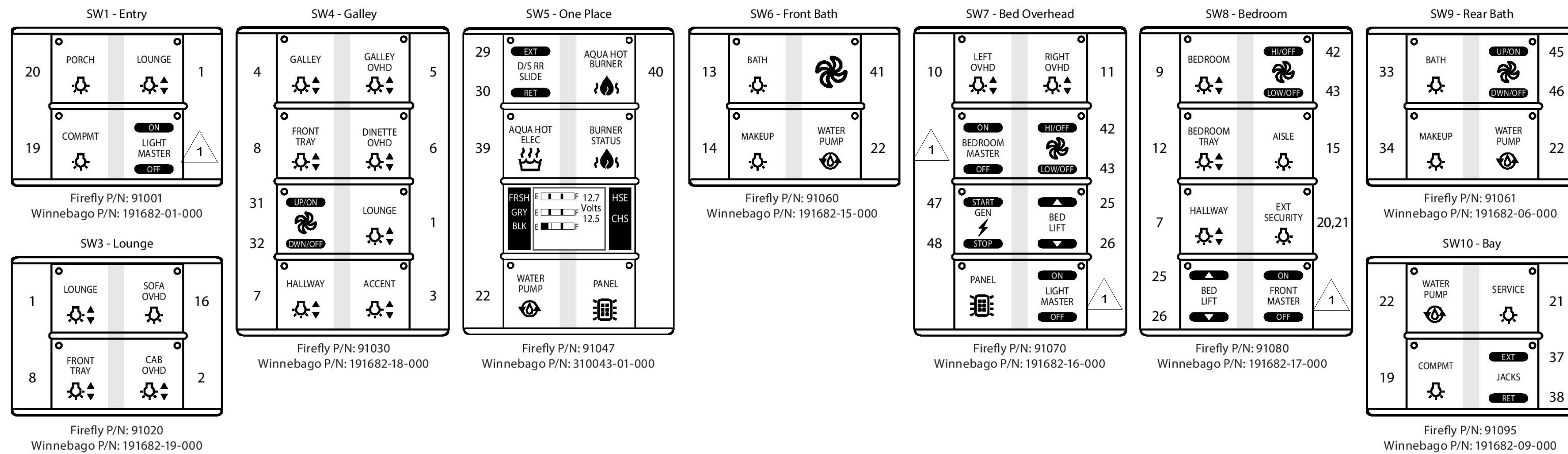
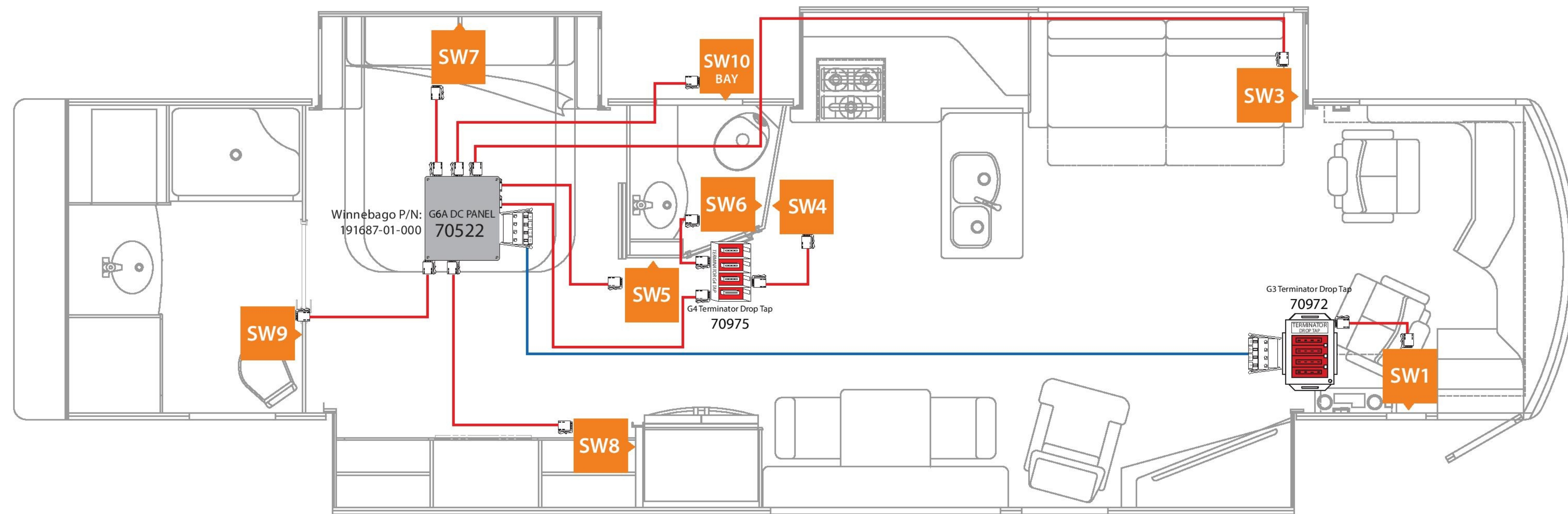
SSP - 15 NETWORK WIRING DIAGRAM
 SWITCH PANEL LAYOUT
 REVISION 1v2 12/29/15

Drop Cable Connections



NETWORK LEGEND

TRUNK CABLE 
 DROP CABLE 
 SWITCH POSITION 



NOTES:
 1 LIGHT MASTER: ON: 1-17; OFF: 1-18,33,34,32,46
 FRONT MASTER (LIGHT): ON: 1-8,13,14,16,17; OFF: 1-8,13,14,16,17
 BEDROOM MASTER (LIGHT): ON: 9-12; OFF: 9-12,18

THIS SHEET FOR REFERENCE ONLY

FOR ELECTRICAL TORQUE SPECIFICATIONS SEE DWG NO. 128783-01-000

FOR ELECTRICAL CALLOUTS SEE DWG NO. 121339-01-000

265 CODES/STANDARDS-CSA/CMVSS

1B1 CODES/STANDARDS USA

1B1 265

DESCRIPTION: WIRING INSTL-BODY, 12V

SHEET: 11 OF 11 ITEM/PART NO: 000021507 / 31425801000 REV