

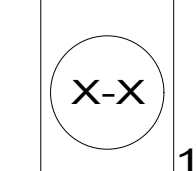
- NOTES:
- 6 SEE LOAD CENTER/ATS ASM FOR ADDITIONAL INFORMATION.
 - 5 TO ABOVE FLOOR.
 - 4 SEE GENERATOR INSTALLATION FOR ADDITIONAL INFORMATION.
 - 3. WIRES THAT REST ON WIRE TRAYS ARE TO BE TIED DOWN WITH WIRE TIE 8343-04-000.
 - 2. CLAMP TO FLOOR SUPPORT TUBES AS NECESSARY WITH CLAMP 10497-01-000.
 - 1. AT MINIMUM ALL WIRES TO BE SUPPORTED AND SECURED PER CODE REQUIREMENTS. USE CLAMP 10495 OR 10497 OR WIRE TIE 8343 OR 108046 AND SCREW G67-XX-XXX OR G56-XX-XXX AS APPROPRIATE FOR INSTALLATION.

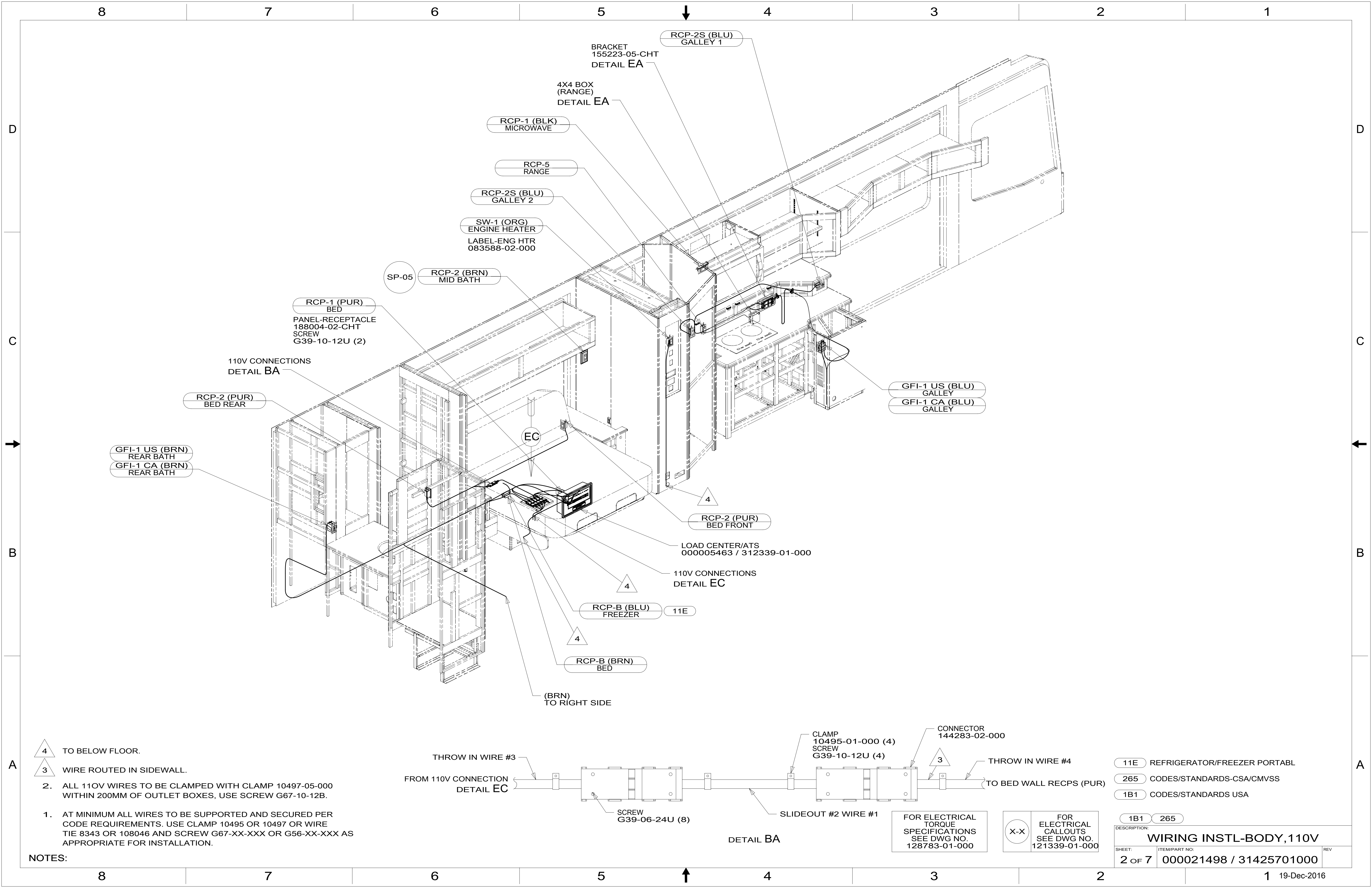
- 22T VACUUM SYSTEM-CENTRAL
- 11E REFRIGERATOR/FREEZER PORTABL
- 265 CODES/STANDARDS-CSA/CMVSS
- 1B1 CODES/STANDARDS USA

WINNEBAGO COPYRIGHT 2016 WINNEBAGO INDUSTRIES, INC.	
DSNR:	ALL DIMENSIONS ARE IN MILLIMETERS
DFFR:	MATERIAL:
UNSPECIFIED TOLERANCES:	WEIGHT: (LBS)
WHOLE DIM (X) : 3	FIRST USED:
ONE-PLACE (X.X) : 1.5	17 P40J
TWO-PLACE (X.XX) : 0.50	
ANGLE : 1°	
REFER TO ES0018 FOR FASTENER TIGHTENING GUIDELINES	
DESCRIPTION: WIRING INSTL-BODY, 110V	
SHEET: 1 OF 7	ITEM/PART NO: 000021498 / 31425701000
REF:	1 19-Dec-2016

FOR ELECTRICAL TORQUE SPECIFICATIONS SEE DWG NO. 128783-01-000

FOR ELECTRICAL CALLOUTS SEE DWG NO. 121339-01-000



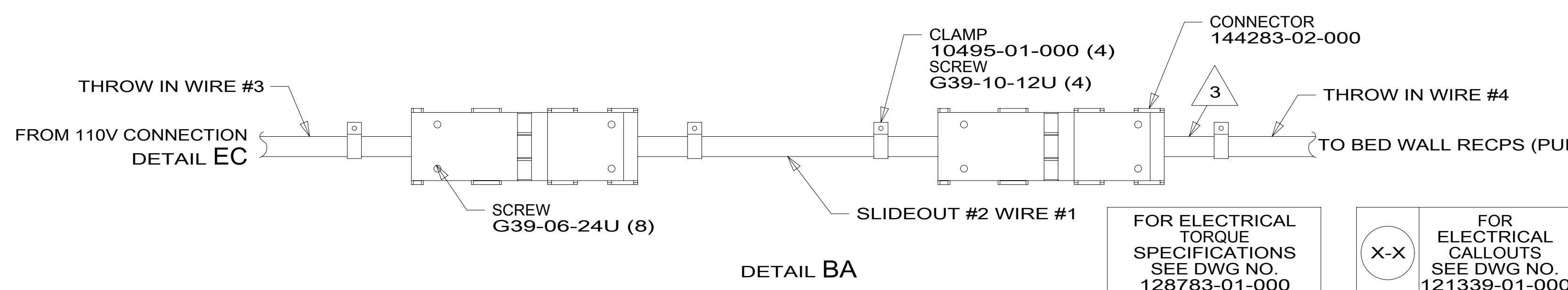


4 TO BELOW FLOOR.

3 WIRE ROUTED IN SIDEWALL.

2. ALL 110V WIRES TO BE CLAMPED WITH CLAMP 10495-05-000 WITHIN 200MM OF OUTLET BOXES, USE SCREW G67-10-12B.
1. AT MINIMUM ALL WIRES TO BE SUPPORTED AND SECURED PER CODE REQUIREMENTS. USE CLAMP 10495 OR 10497 OR WIRE TIE 8343 OR 108046 AND SCREW G67-XX-XXX OR G56-XX-XXX AS APPROPRIATE FOR INSTALLATION.

NOTES:

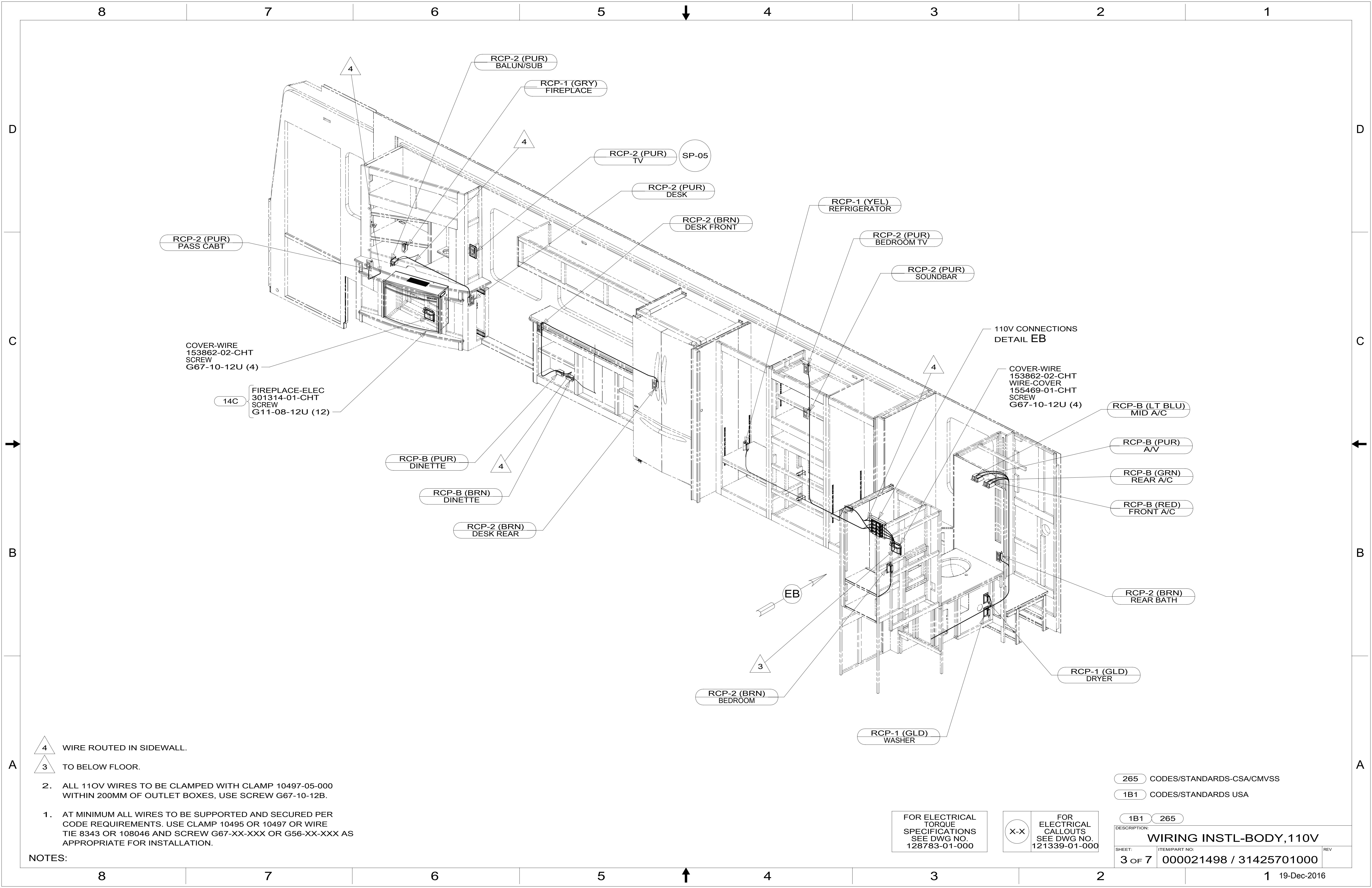


FOR ELECTRICAL TORQUE SPECIFICATIONS SEE DWG NO. 128783-01-000

FOR ELECTRICAL CALLOUTS SEE DWG NO. 121339-01-000

- 11E REFRIGERATOR/FREEZER PORTABL
- 265 CODES/STANDARDS-CSA/CMVSS
- 1B1 CODES/STANDARDS USA

DESCRIPTION: WIRING INSTL-BODY, 110V		
SHEET: 2 OF 7	ITEM/PART NO: 000021498 / 31425701000	REV



- 4 WIRE ROUTED IN SIDEWALL.
- 3 TO BELOW FLOOR.

- NOTES:
2. ALL 110V WIRES TO BE CLAMPED WITH CLAMP 10497-05-000 WITHIN 200MM OF OUTLET BOXES, USE SCREW G67-10-12B.
 1. AT MINIMUM ALL WIRES TO BE SUPPORTED AND SECURED PER CODE REQUIREMENTS. USE CLAMP 10495 OR 10497 OR WIRE TIE 8343 OR 108046 AND SCREW G67-XX-XXX OR G56-XX-XXX AS APPROPRIATE FOR INSTALLATION.

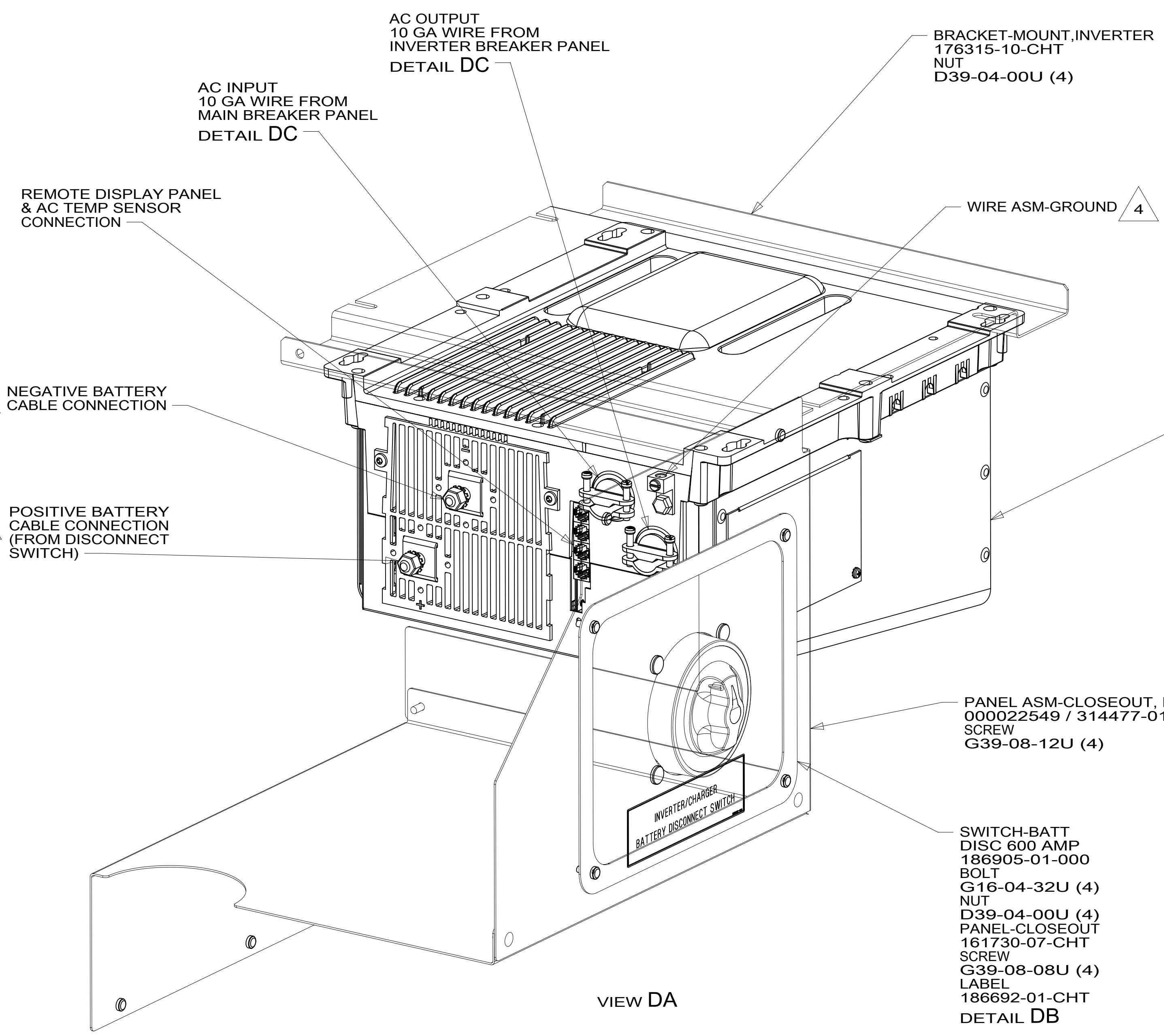
265 CODES/STANDARDS-CSA/CMVSS
 1B1 CODES/STANDARDS USA

FOR ELECTRICAL TORQUE SPECIFICATIONS SEE DWG NO. 128783-01-000

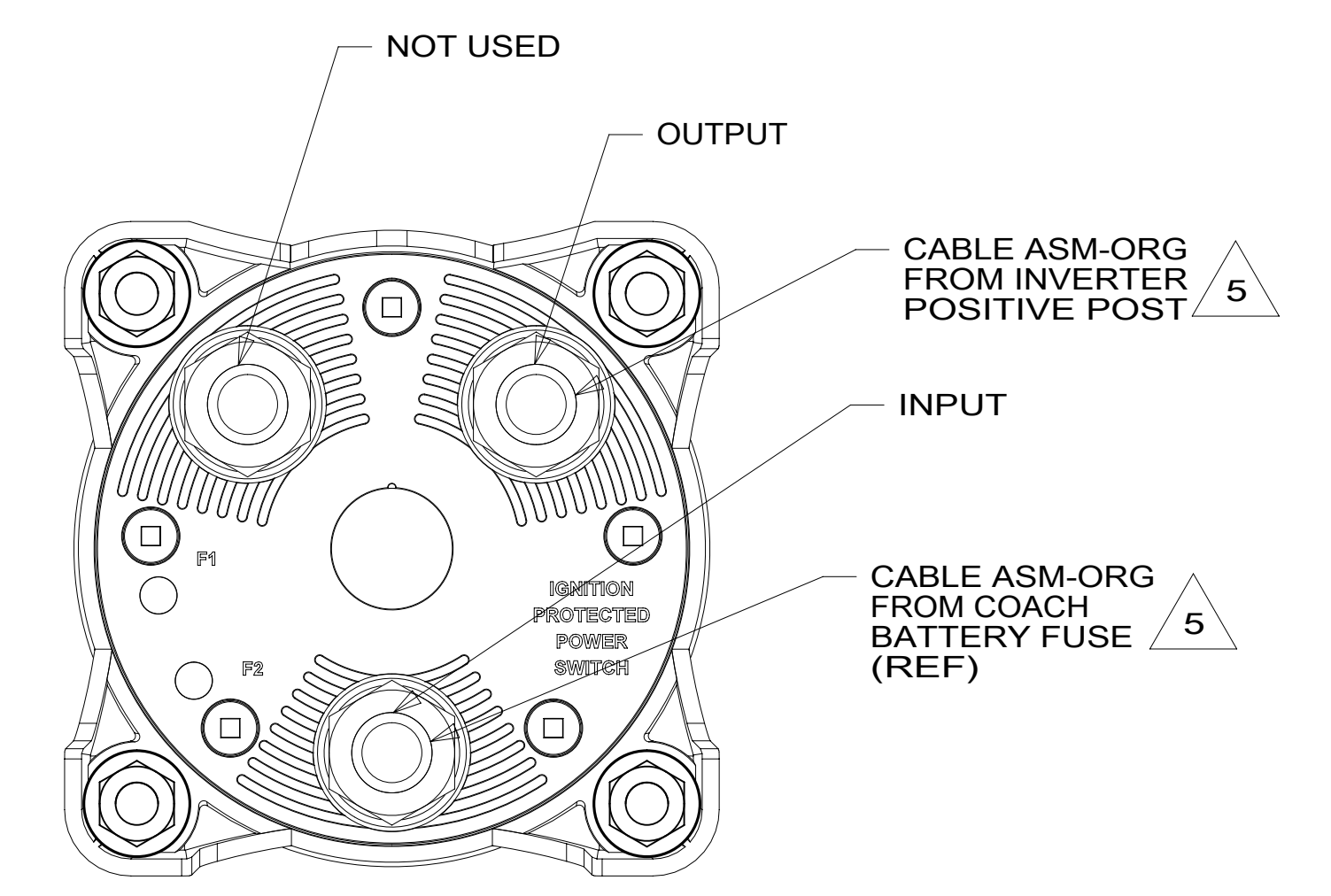
X-X FOR ELECTRICAL CALLOUTS SEE DWG NO. 121339-01-000

DESCRIPTION:	1B1 265	
WIRING INSTL-BODY, 110V		
SHEET:	ITEM/PART NO.:	REV
3 OF 7	000021498 / 31425701000	

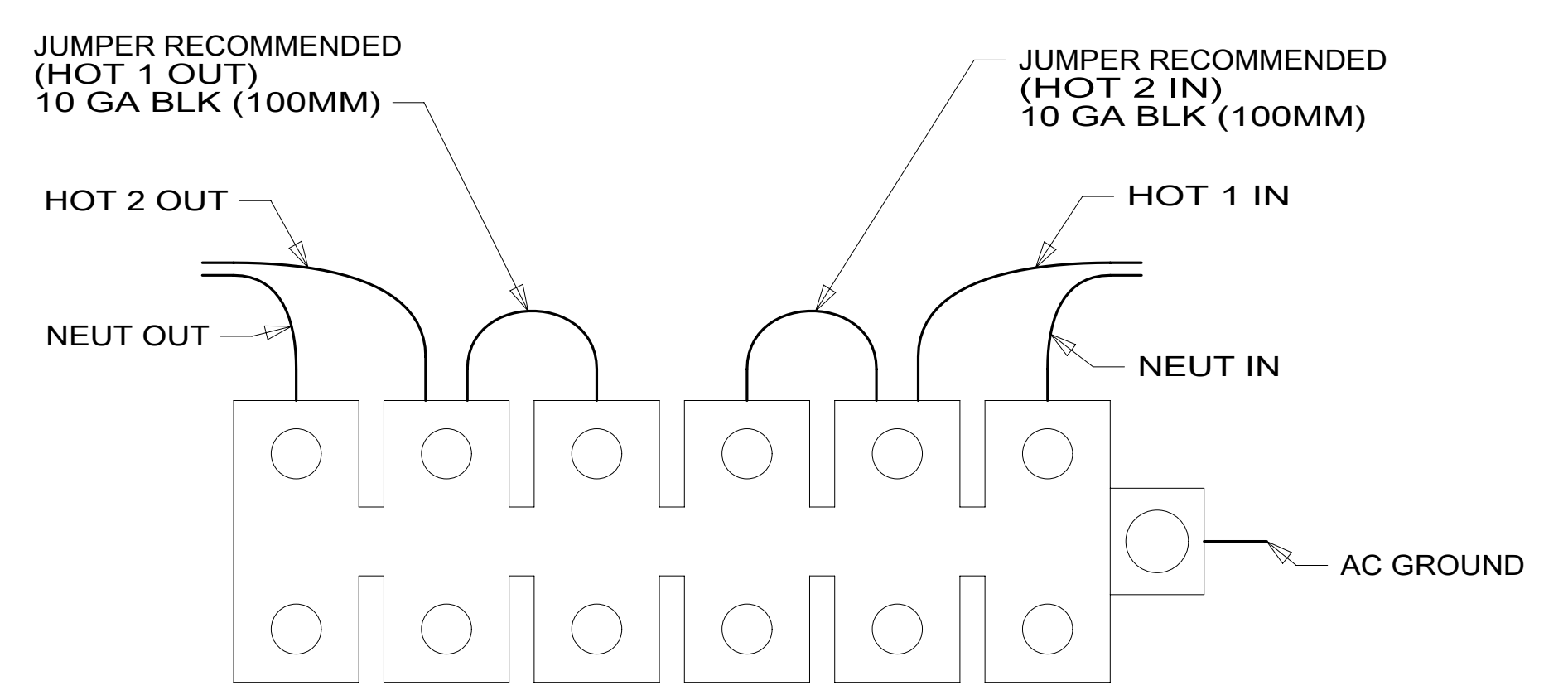
8 7 6 5 4 3 2 1



VIEW DA



DETAIL DB



DETAIL DC

- 5 SEE WIRING INSTL-CHASSIS FOR ADDITIONAL INFORMATION.
- 4 SEE LOAD CENTER/ATS ASM FOR ADDITIONAL INFORMATION.
- 3 DO NOT USE POWER/AIR TOOL TO INSTALL NUT. TORQUE TO 10-12 FT LBS.
- 2 SEE WIRING INSTL-CHASSIS FOR ADDITIONAL INFORMATION.

NOTES:
1. WIRE MUST BE ROUTED THROUGH CLAMPS AS SHOWN.

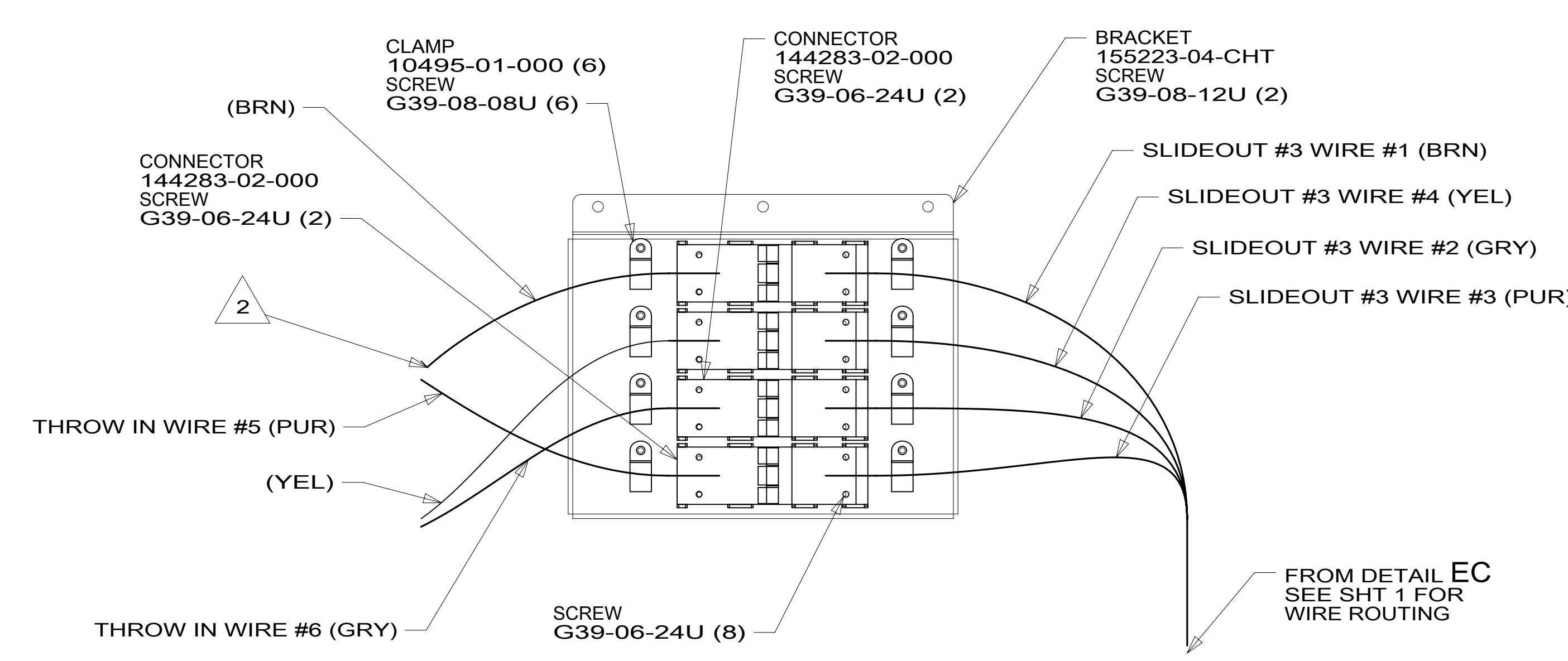
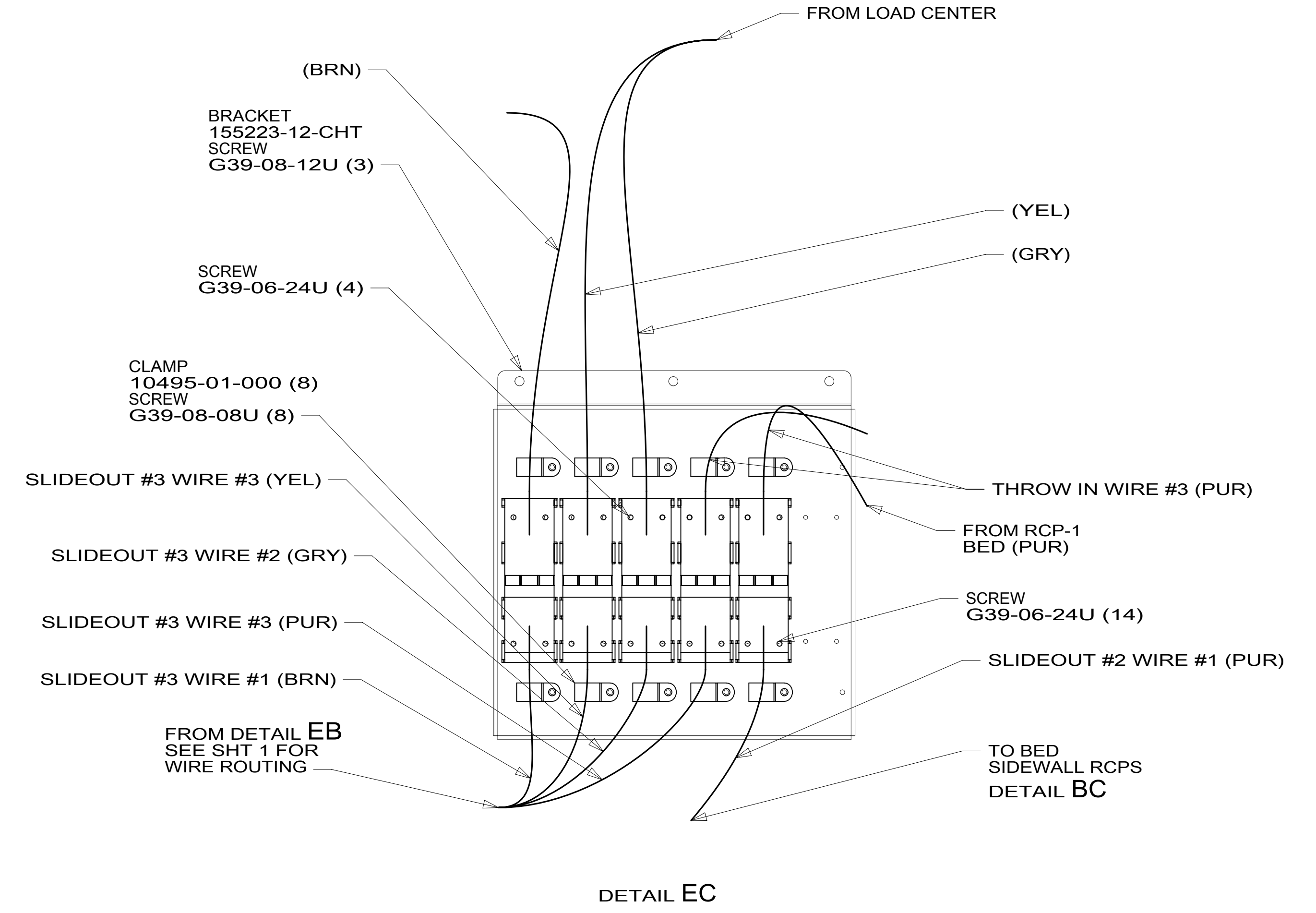
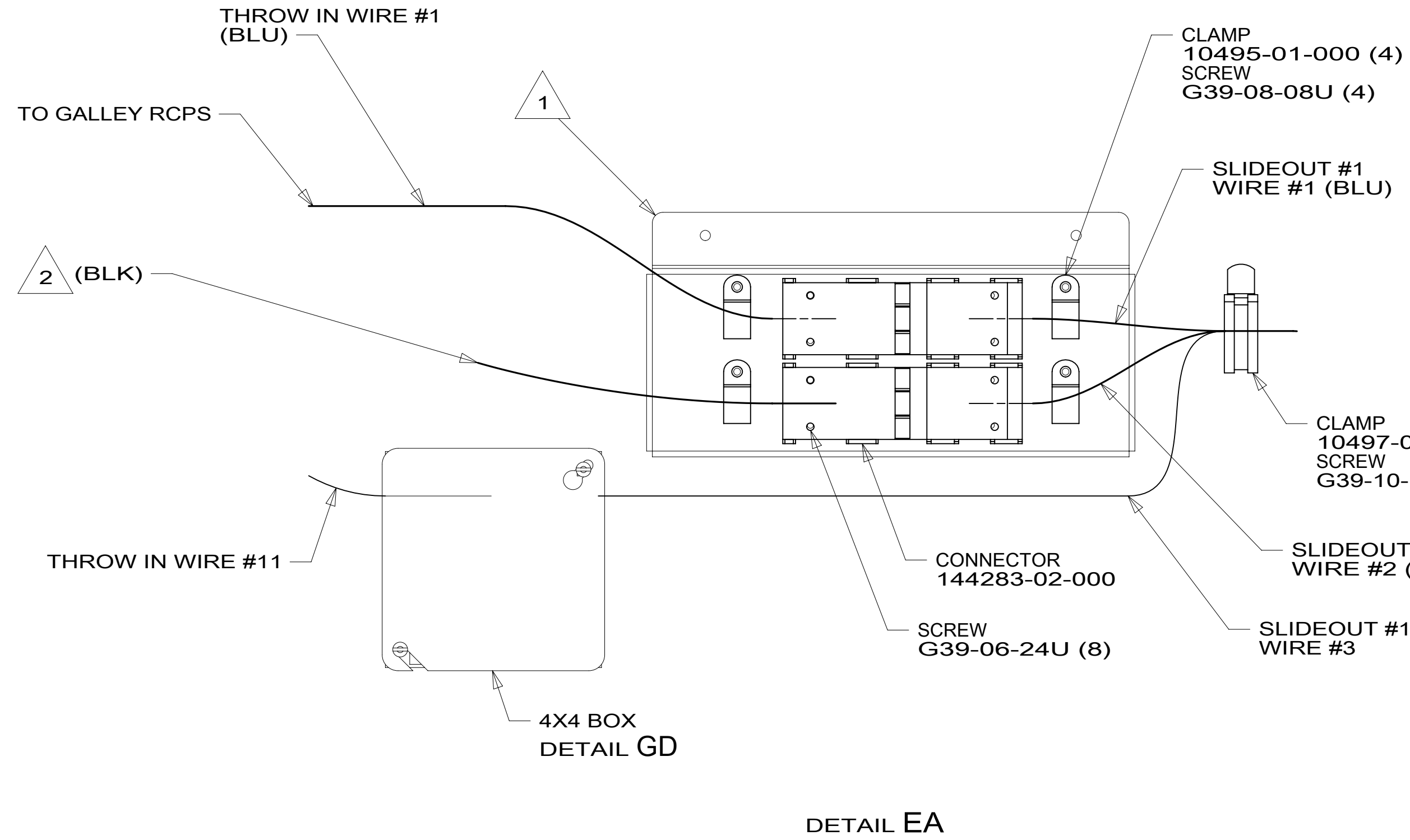
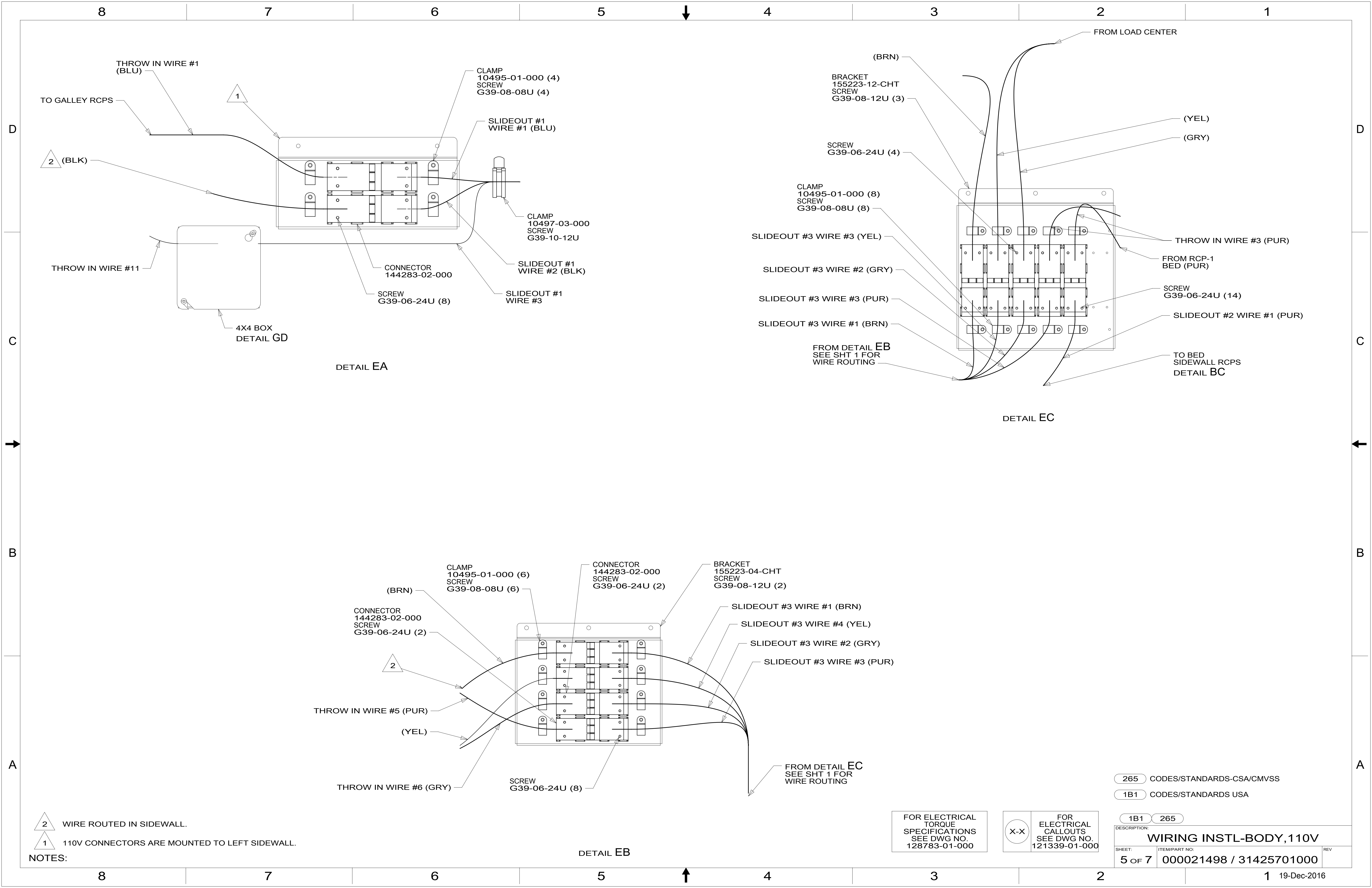
FOR ELECTRICAL TORQUE SPECIFICATIONS SEE DWG NO. 128783-01-000

FOR ELECTRICAL CALLOUTS SEE DWG NO. 121339-01-000

265 CODES/STANDARDS-CSA/CMVSS
1B1 CODES/STANDARDS USA

DESCRIPTION:		1B1 265
WIRING INSTL-BODY, 110V		
SHEET:	ITEM/PART NO.:	REV
4 OF 7	000021498 / 31425701000	

8 7 6 5 4 3 2 1 19-Dec-2016



NOTES:

2 WIRE ROUTED IN SIDEWALL.

1 110V CONNECTORS ARE MOUNTED TO LEFT SIDEWALL.

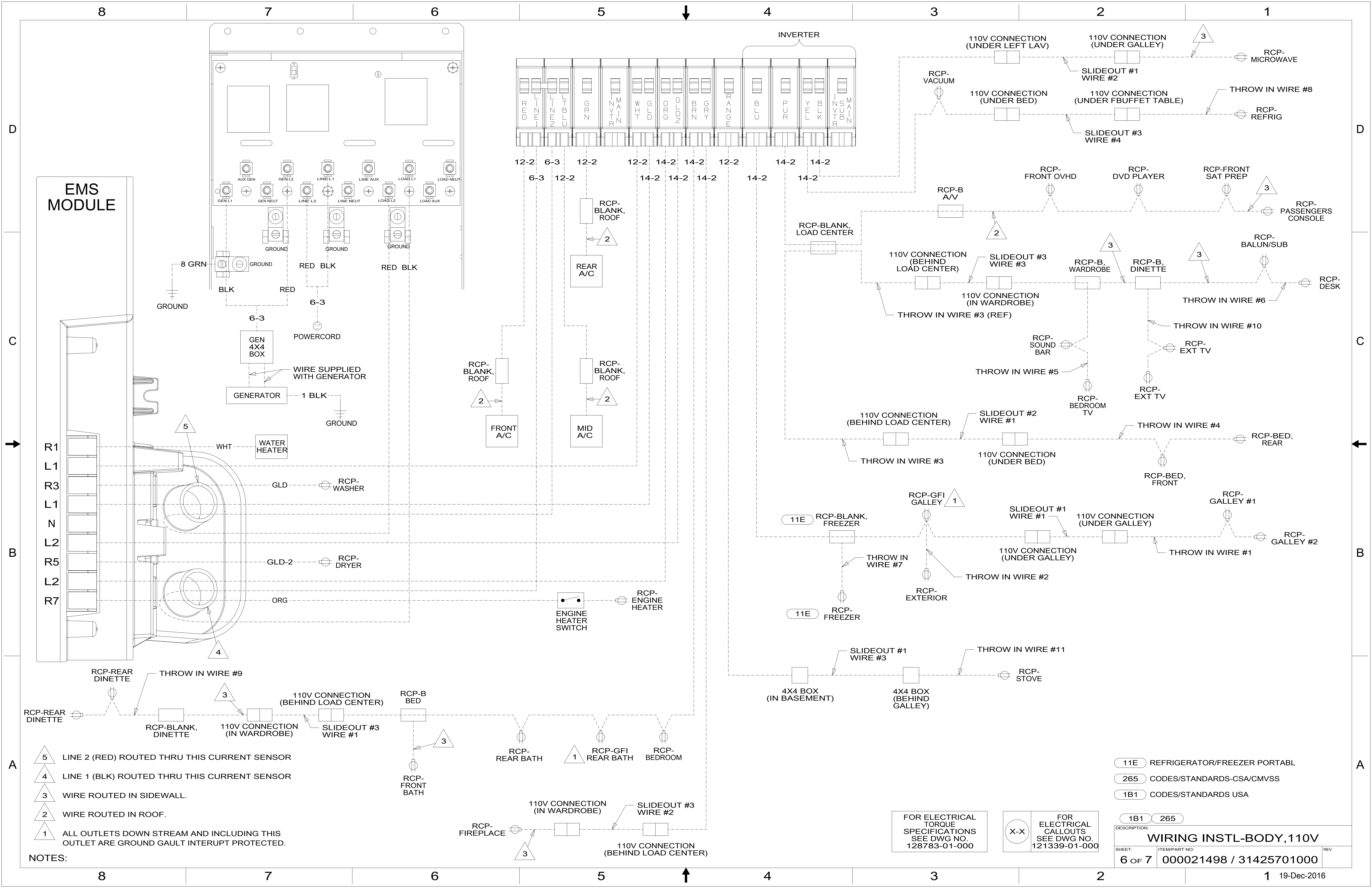
FOR ELECTRICAL
TORQUE
SPECIFICATIONS
SEE DWG NO.
128783-01-000

FOR ELECTRICAL
CALLOUTS
SEE DWG NO.
121339-01-000

265 CODES/STANDARDS-CSA/CMVSS

1B1 CODES/STANDARDS USA

DESCRIPTION:	
1B1 265	
WIRING INSTL-BODY, 110V	
SHEET:	ITEM/PART NO. REV
5 OF 7	000021498 / 31425701000



EMS MODULE

INVERTER

- NOTES:**
- 5 LINE 2 (RED) ROUTED THRU THIS CURRENT SENSOR
 - 4 LINE 1 (BLK) ROUTED THRU THIS CURRENT SENSOR
 - 3 WIRE ROUTED IN SIDEWALL.
 - 2 WIRE ROUTED IN ROOF.
 - 1 ALL OUTLETS DOWN STREAM AND INCLUDING THIS OUTLET ARE GROUND GAULT INTERRUPT PROTECTED.

FOR ELECTRICAL TORQUE SPECIFICATIONS SEE DWG NO. 128783-01-000

FOR ELECTRICAL CALLOUTS SEE DWG NO. 121339-01-000

- 11E REFRIGERATOR/FREEZER PORTABLE
- 265 CODES/STANDARDS-CSA/CMVSS
- 1B1 CODES/STANDARDS USA

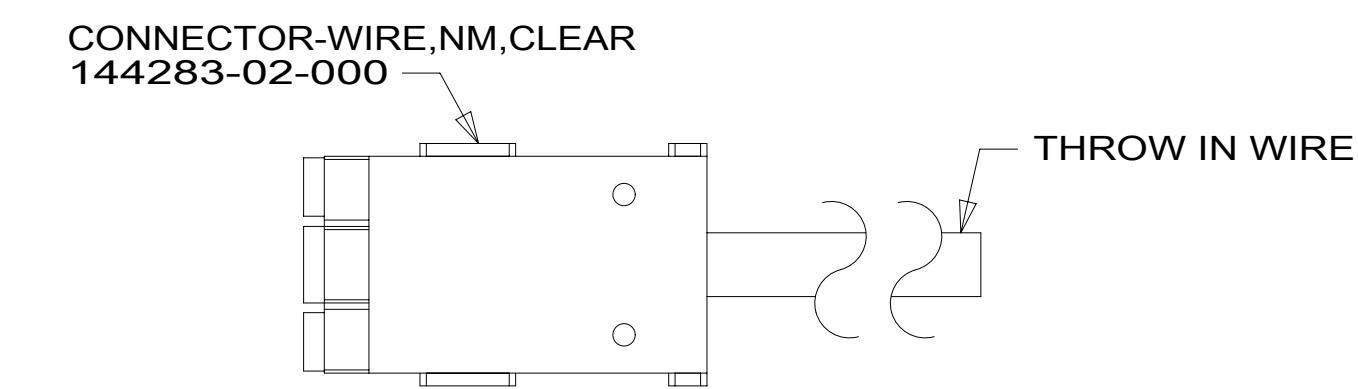
DESCRIPTION: WIRING INSTL-BODY, 110V		
SHEET: 6 OF 7	ITEM/PART NO: 000021498 / 31425701000	REV
19-Dec-2016		

RED	1B1	136135-07-090	
	265	136136-07-090	
GRN	1B1	136135-08-090	
	265	136136-08-090	
LT BLU	1B1	136135-21-090	
	265	136136-21-090	
YEL	1B1	136131-05-015 136131-05-083	22A 22T
	265	136134-05-015 136134-05-083	22A 22T
GLD	1B1	136131-10-070	
	265	136134-10-070	
GLD-2	1B1	136131-20-070	
	265	136134-20-070	
WHT	1B1	136135-09-070	
	265	136136-09-070	
BLU	1B1	136131-02-100	
	265	136134-02-100	
BRN	1B1	136131-03-222	
	265	136134-03-222	
PUR	1B1	136131-04-095	
	265	136134-04-095	
ORG	1B1	136131-16-120	
	265	136134-16-120	

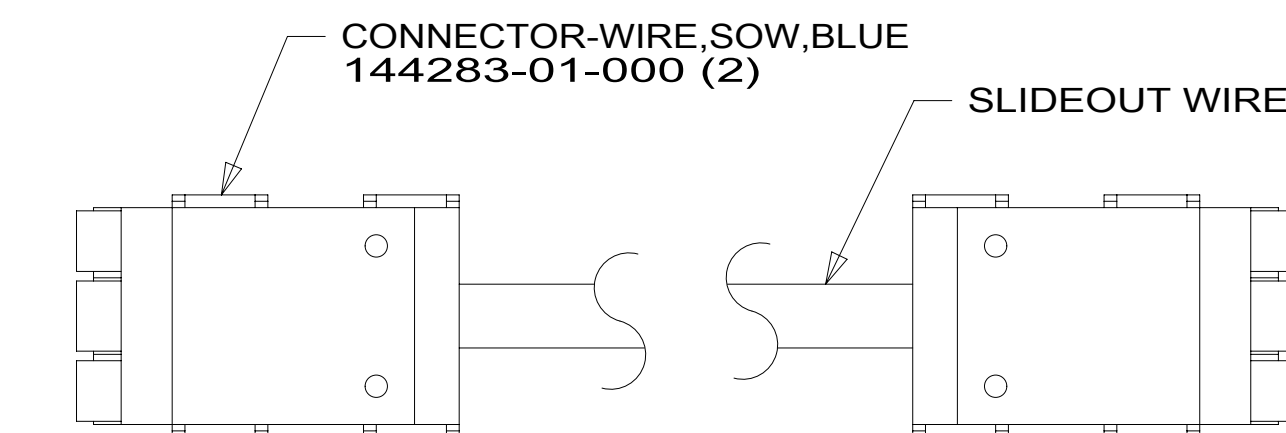
BLK	1B1	136131-06-067	1
	265	136134-06-067	1
GRY	1B1	136131-15-015	1
	265	136134-15-015	1
RANGE	1B1	136135-01-075	4
	265	136136-01-075	4
INVERTER CHARGER MAIN	1B1	136137-01-053	
	265	136138-01-053	
INVERTER CHARGER SUB MAIN	1B1	136137-01-053	
	265	136138-01-053	
CABLE ASM-MAIN,6 AWG		176841-01-025	
MAIN GROUND		136145-01-020	
ATS GROUND		136145-01-010	
INVERTER GROUND		136145-04-040	
GENERATOR CABLE ASM		174031-03-120	

THROW IN WIRE #1	1B1	136131-02-084	
	265	136134-02-084	
THROW IN WIRE #2	1B1	136131-02-048	
	265	136134-02-048	
THROW IN WIRE #3	1B1	136131-04-012	3
	265	136134-04-012	3
THROW IN WIRE #4	1B1	136131-04-040	1
	265	136134-04-040	1
THROW IN WIRE #5	1B1	136131-04-034	1
	265	136134-04-034	1
THROW IN WIRE #6	1B1	136131-04-017	
	265	136134-04-017	
THROW IN WIRE #7	1B1	136131-02-043	11E
	265	136134-02-043	11E
THROW IN WIRE #8	1B1	136131-05-025	1
	265	136134-05-025	1
THROW IN WIRE #9	1B1	136131-03-039	
	265	136134-03-039	
THROW IN WIRE #10	1B1	136131-04-025	
	265	136134-04-025	
THROW IN WIRE #11	1B1	136135-01-015	4
	265	136136-01-015	4

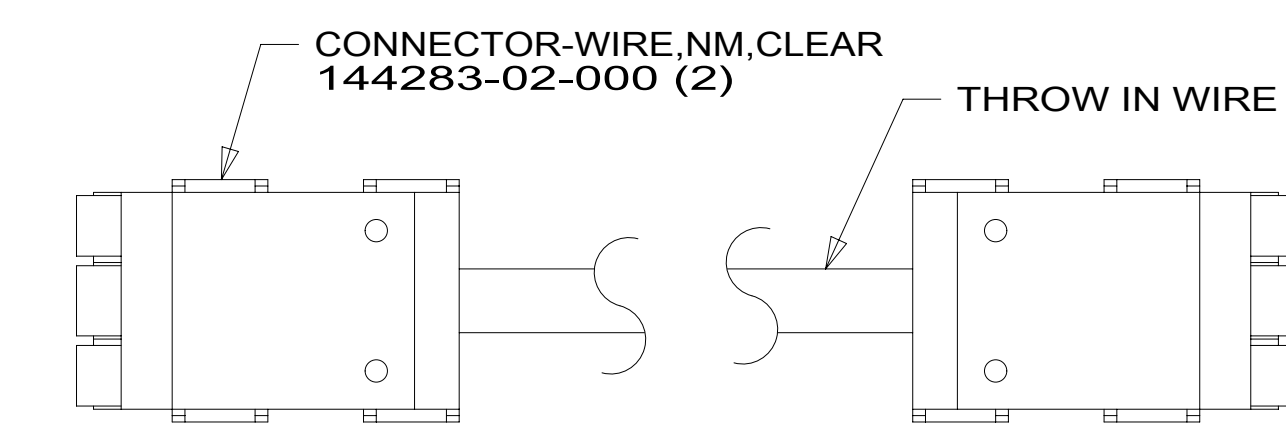
SLIDEOUT #1 WIRE #1	136151-02-040	2
SLIDEOUT #1 WIRE #2	136151-06-040	2
SLIDEOUT #1 WIRE #3	136152-014-040	4
SLIDEOUT #2 WIRE #1	136151-04-012	2
SLIDEOUT #3 WIRE #1	136151-03-055	2
SLIDEOUT #3 WIRE #2	136151-15-055	2
SLIDEOUT #3 WIRE #3	136151-04-055	2
SLIDEOUT #3 WIRE #4	136151-05-055	2



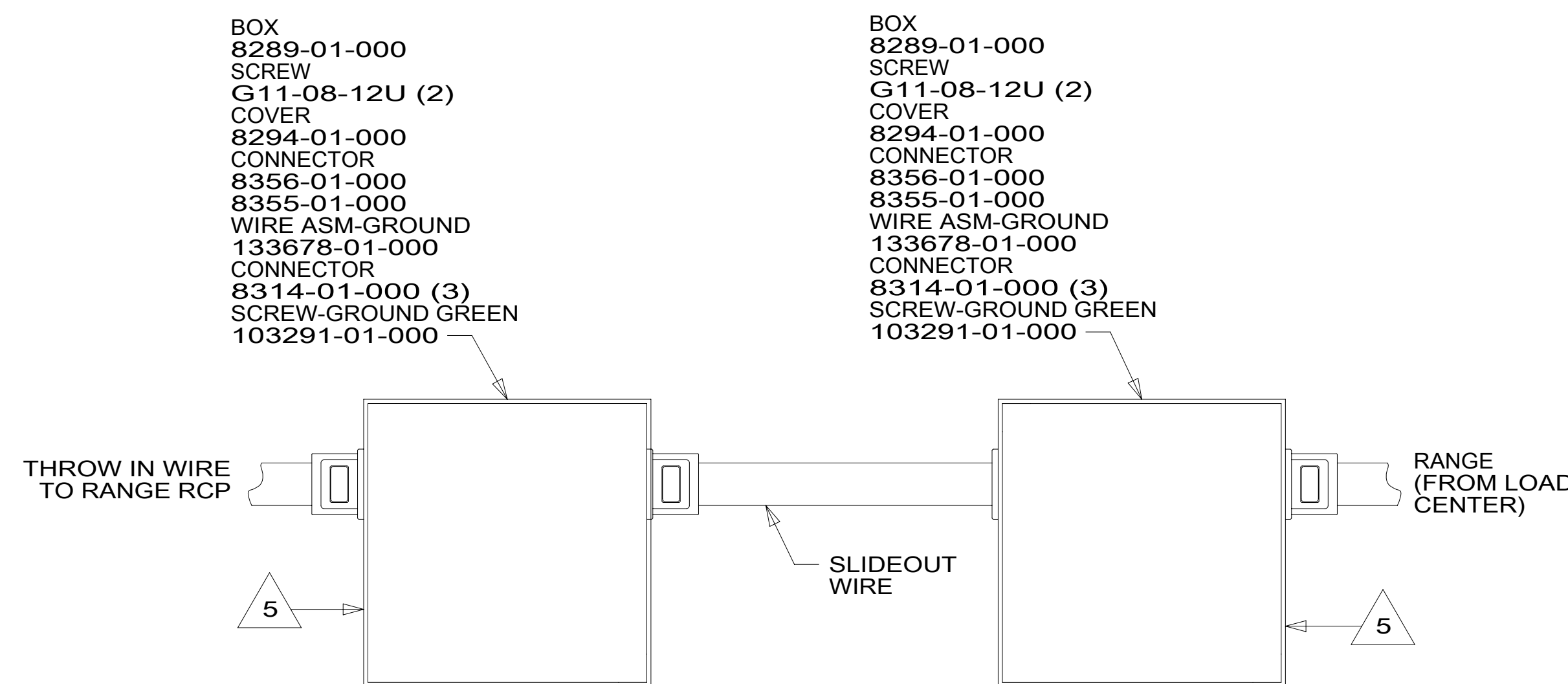
DETAIL GA



DETAIL GB



DETAIL GC



DETAIL GD

- BOX 8289-01-000
- SCREW G11-08-12U (2)
- COVER 8294-01-000
- CONNECTOR 8356-01-000
- 8355-01-000
- WIRE ASM-GROUND 133678-01-000
- CONNECTOR 8314-01-000 (3)
- SCREW-GROUND GREEN 103291-01-000

- 5 CONNECT WIRES, WHT TO WHT, BLK TO BLK, GROUNDS TO GROUNDS, KEEPING CIRCUITS SEPERATED.
- 4 SEE DETAIL GD FOR CONNECTOR INSTALLATION.
- 3 SEE DETAIL GC FOR CONNECTOR INSTALLATION.
- 2 SEE DETAIL GB FOR CONNECTOR INSTALLATION.
- 1 SEE DETAIL GA FOR CONNECTOR INSTALLATION.

NOTES:

FOR ELECTRICAL TORQUE SPECIFICATIONS SEE DWG NO. 128783-01-000

FOR ELECTRICAL CALLOUTS SEE DWG NO. 121339-01-000

- 11E REFRIGERATOR/FREEZER PORTABL
- 22A VACUUM SYS-CENTRAL-WITHOUT
- 22T VACUUM SYSTEM-CENTRAL
- 265 CODES/STANDARDS-CSA/CMVSS
- 1B1 CODES/STANDARDS USA

DESCRIPTION:	1B1 265	
WIRING INSTL-BODY, 110V		
SHEET:	ITEM/PART NO:	REV
7 OF 7	000021498 / 31425701000	