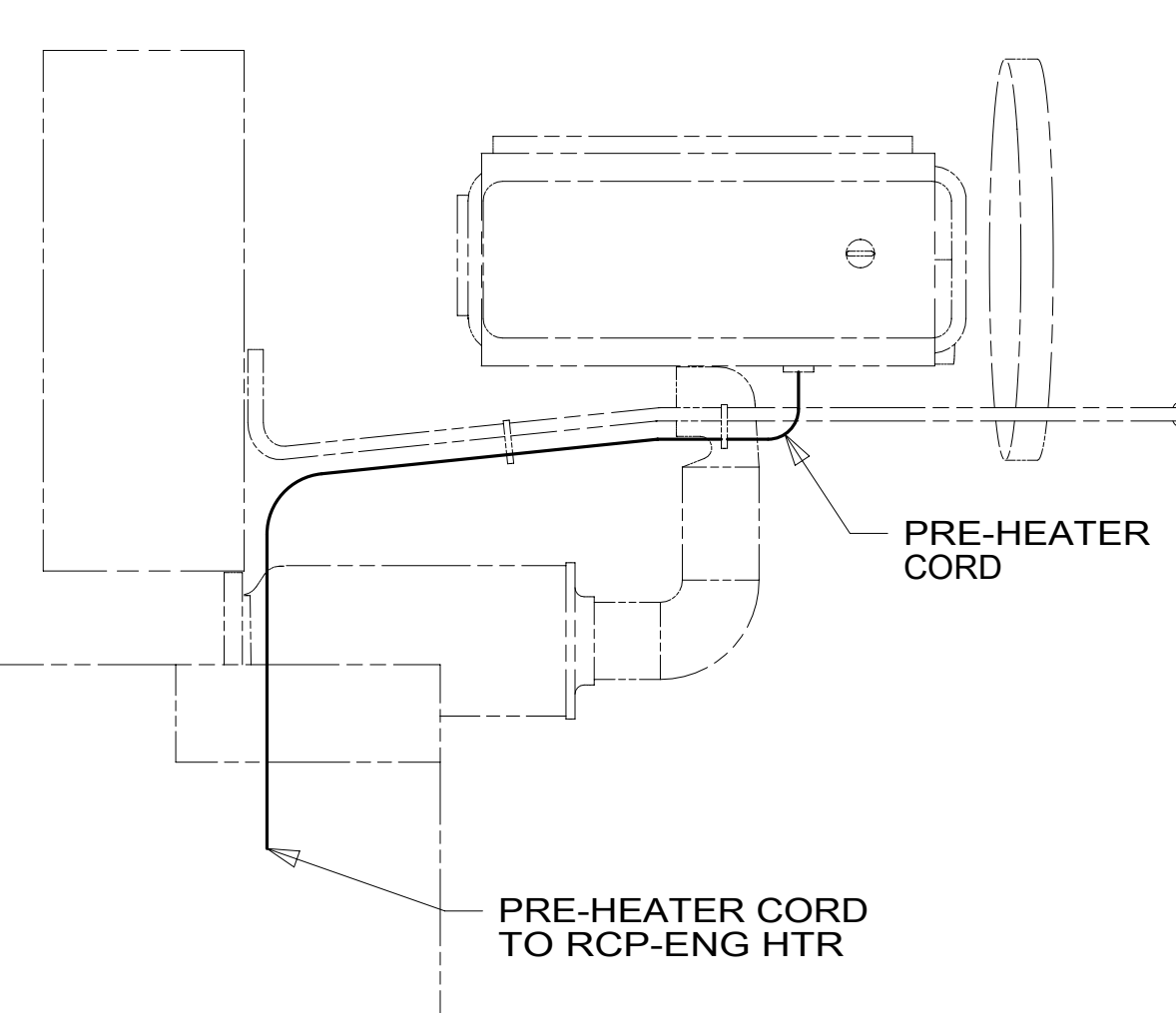


- 9 MHP TO INSTALL ON VALVE STEMS PER MANUFACTURER'S INSTRUCTIONS.
- 8 MOUNT ANTENNA WITH SUPPLIED BRACKET. ROUTE ANTENNA WIRE ALONG DS FRAME RAIL AND SECURE WITH OTHER LOOMS. COIL EXCESS UNDER DASH WITH INFOTAINMENT CORE WIRING CONNECTORS.
- 7 REST WIRE IN FRAME RAIL WHEN APPLICABLE.
- 6 CLAMP 83610-01-000, SCREW G39-08-12U
- 5 CLAMP 10497-03-000, SCREW G39-08-12U
- 4 USE TIE-WIRE 8343-04-000 TO SECURE WIRES TO FLOOR SUPPORT FRAME AT LEAST ONCE EVERY 600MM.
- 3 SECURE CORD AWAY FROM ALL MOVING PARTS AND EXHAUST WITH WIRE-TIE 93147-01-000 AS REQUIRED
- 2 SEE WIRING INSTL-FRONT END FOR ADDITIONAL INFORMATION.
- 1 SEE WIRING INSTL-BODY, 110V FOR ADDITIONAL INFORMATION.

NOTES:



DETAIL AA 3

- 38M TIRE MONITORING SYSTEM
- 282 SOLAR PANEL - 100 WATT
- 265 CODES/STANDARDS-CSA/CMVSS
- 1B1 CODES/STANDARDS USA

1B1 265

WINNEBAGO
COPYRIGHT 2016 WINNEBAGO INDUSTRIES, INC.

DSNR:	ALL DIMENSIONS ARE IN MILLIMETERS
DFFR:	
UNSPECIFIED TOLERANCES:	MATERIAL:
WHOLE DIM (X) : 3	
ONE-PLACE (X.X) : 1.5	
TWO-PLACE (X.XX) : 0.50	
ANGLE : 1°	
REFER TO ES0018 FOR FASTENER TIGHTENING GUIDELINES	WEIGHT: (LBS) FIRST USED:
	17 P40J
DESCRIPTION: WIRING INSTL-CHASSIS	
SHEET: 1 OF 8	ITEM/PART NO: 000021481 / 31425501000
REF:	REV: 1 30-Jan-2017

FOR ELECTRICAL TORQUE SPECIFICATIONS SEE DWG NO. 128783-01-000

FOR ELECTRICAL CALLOUTS SEE DWG NO. 121339-01-000

8 7 6 5 4 3 2 1



D

D

CABLE ASM (YEL) FROM COACH BATTERY FUSE TO COACH STUD,JUMP START	175207-52-069	
CABLE ASM (YEL) FROM STUD,JUMP START TO COACH SIDE OF AUX START SOLENOID	175207-52-004	
CABLE ASM (BLK) FROM STUD,JUMP START "GROUND" TO FRAME RAIL GROUND	175211-01-010	
CABLE ASM (ORG) FROM COACH BATTERY TO INVERTER FUSE	175207-66-010	
CABLE ASM (ORG) FROM INVERTER FUSE TO INVERTER DISCONNECT SWITCH	175207-67-052	2
CABLE ASM (ORG) FROM INVERTER DISCONNECT TO POSITIVE TERMINAL ON INVERTER	175207-65-005	
CABLE ASM (BLK) FROM BATTERY TO INVERTER NEGATIVE TERMINAL	175211-01-054	2
CABLE ASM (BLK) FROM COACH BATTERY TO FRAME RAIL GROUND	175211-02-072	
CABLE ASM (PUR) FROM CHASSIS BATTERY DISCONNECT TO CHASSIS ISOLATED STUD	175207-15-005	
CABLE ASM (BLU) FROM CHASSIS DISCONNECT FUSE TO LEVELING SYSTEM PUMP	141416-26-100	1
CABLE ASM (BLK) FROM LEVELING SYSTEM TO FRAME RAIL GROUND	133567-11-005	1
CABLE ASM (GRN) FROM COACH BAT DISC RELAY TO PASS THRU STUD IN FRONT LEFT COMPT	175207-42-125	2
CABLE ASM (GRN) FROM PASS THRU STUD IN FRONT LEFT COMPT TO GENERATOR	175207-42-031	3
CABLE ASM (BLK) FROM GENERATOR TO FRAME RAIL GROUND BOLT	175211-02-020	2
CABLE ASM (YEL) JUMPER BETWEEN POSITIVE POSTS ON COACH BATTERY	141417-52-004 141417-51-002 (4)	
CABLE ASM (BLK) JUMPER BETWEEN NEGATIVE POSTS ON COACH BATTERY	133568-12-004 133568-11-002 (4)	
CABLE ASM (RED) JUMPER BETWEEN POSITIVE POSTS IN LEFT FRONT COMPT	141417-32-002	
CABLE ASM-TEMPERATURE,BATTERY	175385-03-000	
CABLE ASM (RED) FROM CHASSIS BATTERY FUSE TO CHASSIS SIDE OF AUX START SOLENOID	175207-35-008	3
CABLE ASM (RED) FROM CHASSIS BATTERY TO CHASSIS BATTERY FUSE	175207-35-005	
CABLE ASM (YEL) FROM COACH BATTERY TO COACH BATTERY FUSE	175207-52-006	
CABLE ASM (YEL) FROM COACH DISCONNECT TO MULTIPLEX PANEL	189044-01-072	

2

2

1

1

2

3

2

3

C

C

B

B

A

A

- NOTES:
- 3 SEE WIRING INSTL-FRONT END FOR ADDITIONAL INFORMATION.
 - 2 SEE WIRING INSTL-CHASSIS FOR ADDITIONAL INFORMATION.
 - 1 SEE LEVELING SYSTEM INSTL FOR ADDITIONAL INFORMATION.

265 CODES/STANDARDS-CSA/CMVSS
1B1 CODES/STANDARDS USA

FOR ELECTRICAL TORQUE SPECIFICATIONS SEE DWG NO. 128783-01-000

FOR ELECTRICAL CALLOUTS SEE DWG NO. 121339-01-000

1B1 265

DESCRIPTION: **WIRING INSTL-CHASSIS**

SHEET: 2 OF 8 ITEM/PART NO: 000021481 / 31425501000 REV

1 30-Jan-2017

8 7 6 5 4 3 2 1



8

7

6

5

4

3

2

1

BATTERY-12V
 174923-01-000 (6)
 BOLT
 51387-06-000 (8)
 NUT-HEX
 D39-05-00U (8)
 WASHER-RUBBER
 184541-01-CHT (8)
 STRAP-BATTERY
 TIE DOWN
 138914-01-CHT (6)

CABLE ASM (ORG)
 TO INVERTER FUSE

TO GROUND STUD
 BEHIND CHASSIS
 BATTERIES

CABLE ASM (YEL)

CABLE ASM (BLK)
 TO INVERTER

CABLE ASM-
 TEMPERATURE,BATTERY

HOLDER-FUSE
 115187-02-000
 FUSE-400 AMP
 115187-05-000
 SCREW
 G39-10-16U (2)

CABLE ASM (YEL)
 COACH BATTERY JUMPER

CABLE ASM (BLK)
 COACH BATTERY JUMPER

TRAY ASM-BATTERY
 176166-01-CHT (2)
 NUT
 D39-06-00U (6)
 WASHER
 E13-17-00U (6)

HOLDER-FUSE
 188460-01-000
 FUSE-500 AMP
 188461-04-000
 SCREW
 G39-10-12U (2)

282 CONNECT SOLAR PANEL
 GROUND HERE
 CIRCUIT ZZD
 29W TAPE CIRCUIT ZZD
 BACK TO HARNESS

VIEW CA

- 29W SOLAR PANEL/BATTERY CHRG W/O
- 282 SOLAR PANEL - 100 WATT
- 265 CODES/STANDARDS-CSA/CMVSS
- 1B1 CODES/STANDARDS USA

FOR ELECTRICAL
 TORQUE
 SPECIFICATIONS
 SEE DWG NO.
 128783-01-000

FOR
 ELECTRICAL
 CALLOUTS
 SEE DWG NO.
 121339-01-000

DESCRIPTION:	1B1 265	
WIRING INSTL-CHASSIS		
SHEET:	ITEM/PART NO:	REV
3 OF 8	000021481 / 31425501000	

8

7

6

5

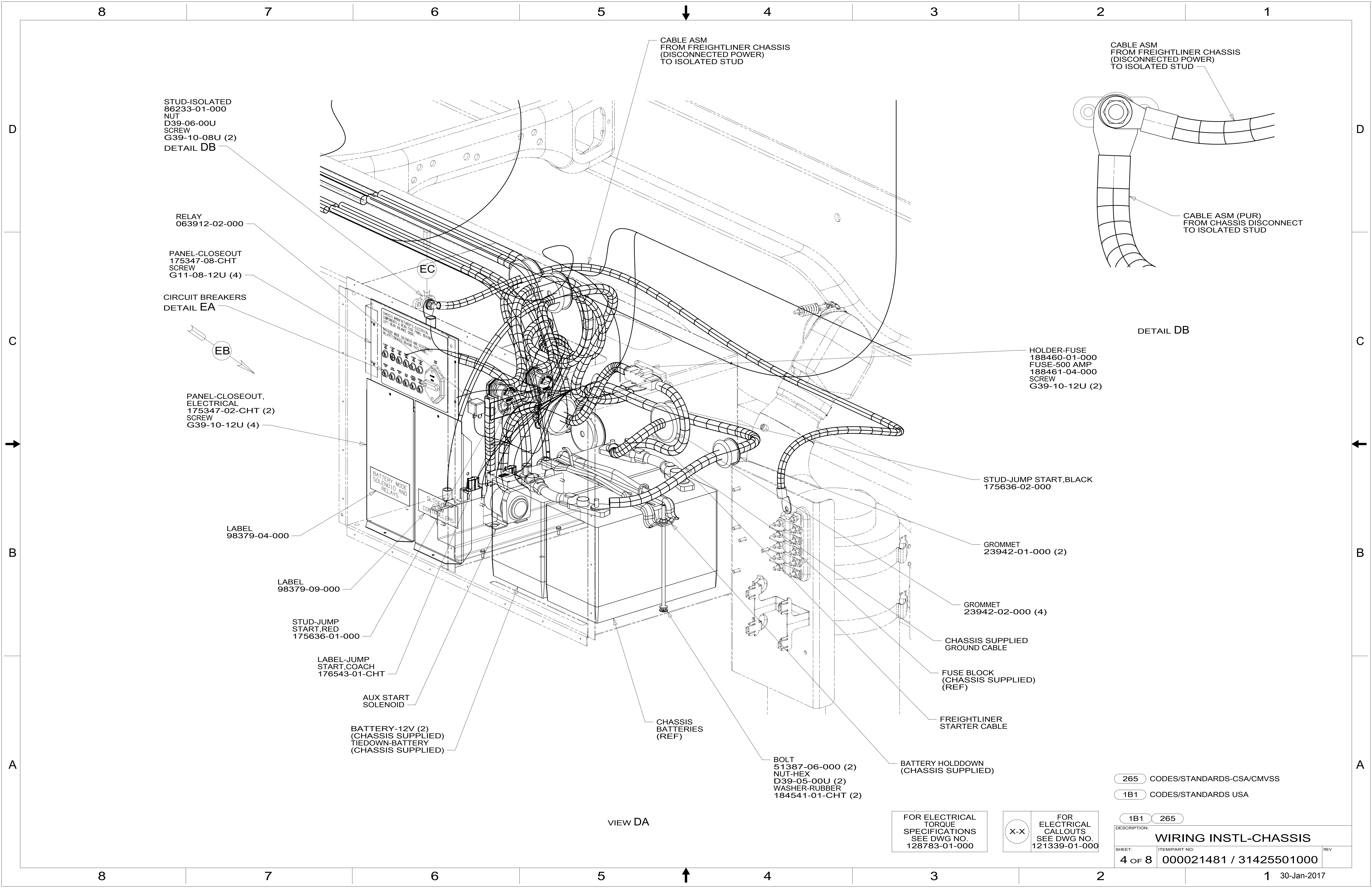
4

3

2

1

30-Jan-2017



STUD-ISOLATED
86233-01-000
NUT
D39-06-00U
SCREW
G39-10-08U (2)
DETAIL DB

RELAY
063912-02-000

PANEL-CLOSEOUT
175347-08-CHT
SCREW
G11-08-12U (4)

CIRCUIT BREAKERS
DETAIL EA

PANEL-CLOSEOUT,
ELECTRICAL
175347-02-CHT (2)
SCREW
G39-10-12U (4)

LABEL
98379-04-000

LABEL
98379-09-000

STUD-JUMP
START,RED
175636-01-000

LABEL-JUMP
START,COACH
176543-01-CHT

AUX START
SOLENOID

BATTERY-12V (2)
(CHASSIS SUPPLIED)
TIEDOWN-BATTERY
(CHASSIS SUPPLIED)

CABLE ASM
FROM FREIGHTLINER CHASSIS
(DISCONNECTED POWER)
TO ISOLATED STUD

CABLE ASM
FROM FREIGHTLINER CHASSIS
(DISCONNECTED POWER)
TO ISOLATED STUD

CABLE ASM (PUR)
FROM CHASSIS DISCONNECT
TO ISOLATED STUD

HOLDER-FUSE
188460-01-000
FUSE-500 AMP
188461-04-000
SCREW
G39-10-12U (2)

STUD-JUMP START, BLACK
175636-02-000

GROMMET
23942-01-000 (2)

GROMMET
23942-02-000 (4)

CHASSIS SUPPLIED
GROUND CABLE

FUSE BLOCK
(CHASSIS SUPPLIED)
(REF)

FREIGHTLINER
STARTER CABLE

BATTERY HOLDDOWN
(CHASSIS SUPPLIED)

BOLT
51387-06-000 (2)
NUT-HEX
D39-05-00U (2)
WASHER-RUBBER
184541-01-CHT (2)

CHASSIS
BATTERIES
(REF)

DETAIL DB

VIEW DA

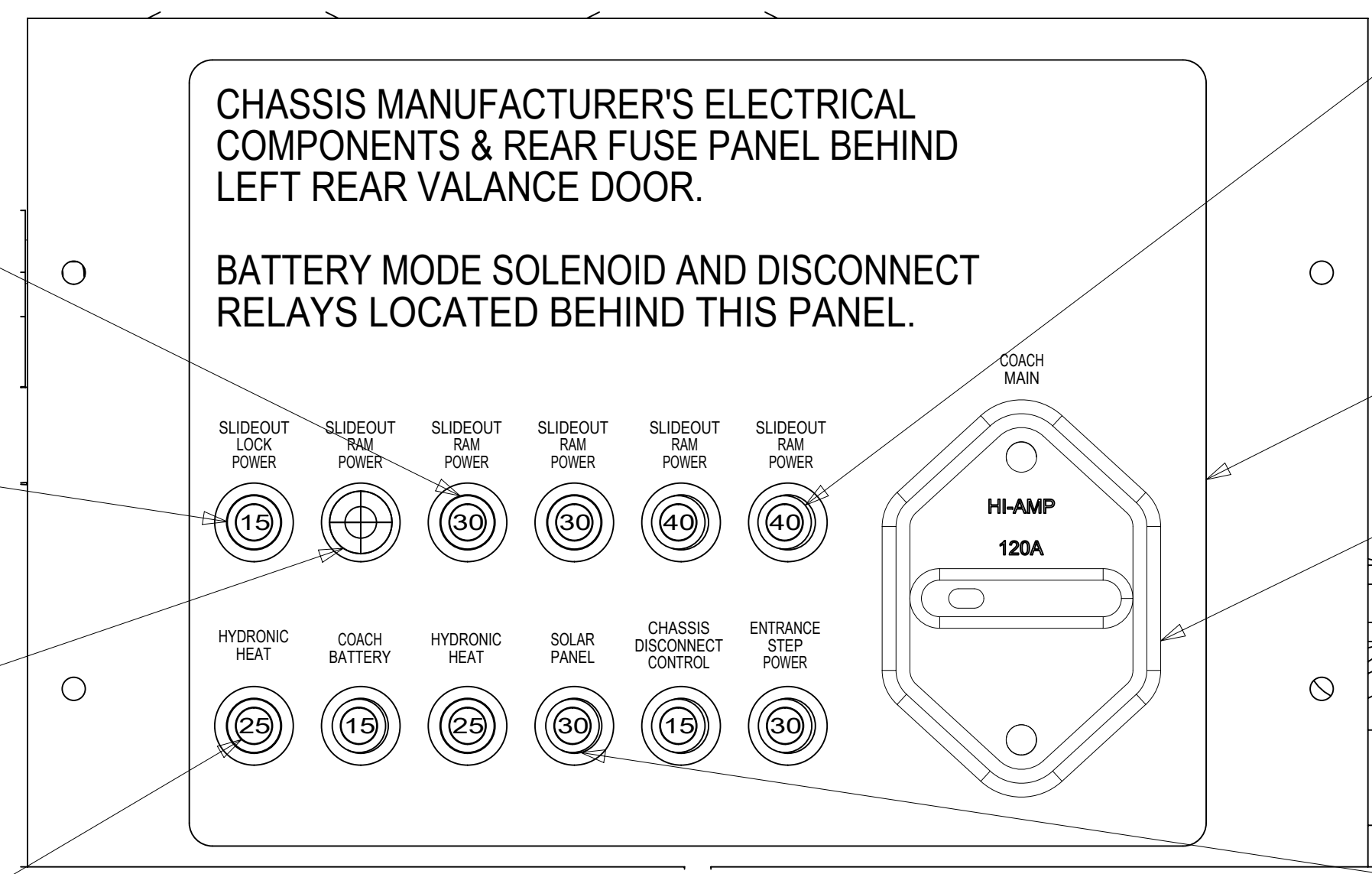
FOR ELECTRICAL
TORQUE
SPECIFICATIONS
SEE DWG NO.
128783-01-000

FOR ELECTRICAL
CALLOUTS
SEE DWG NO.
121339-01-000

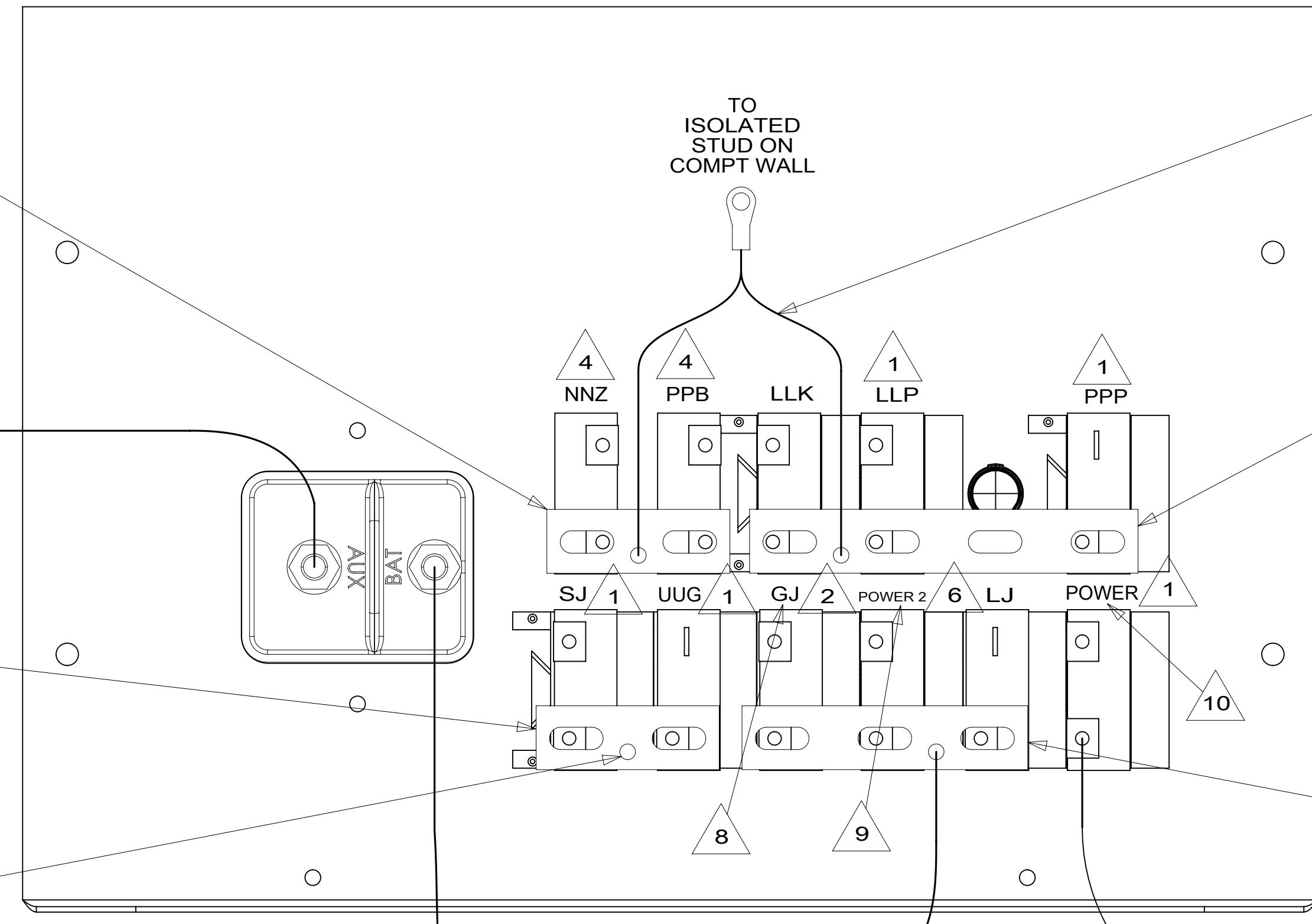
265 CODES/STANDARDS-CSA/CMVSS
1B1 CODES/STANDARDS USA

1B1 265

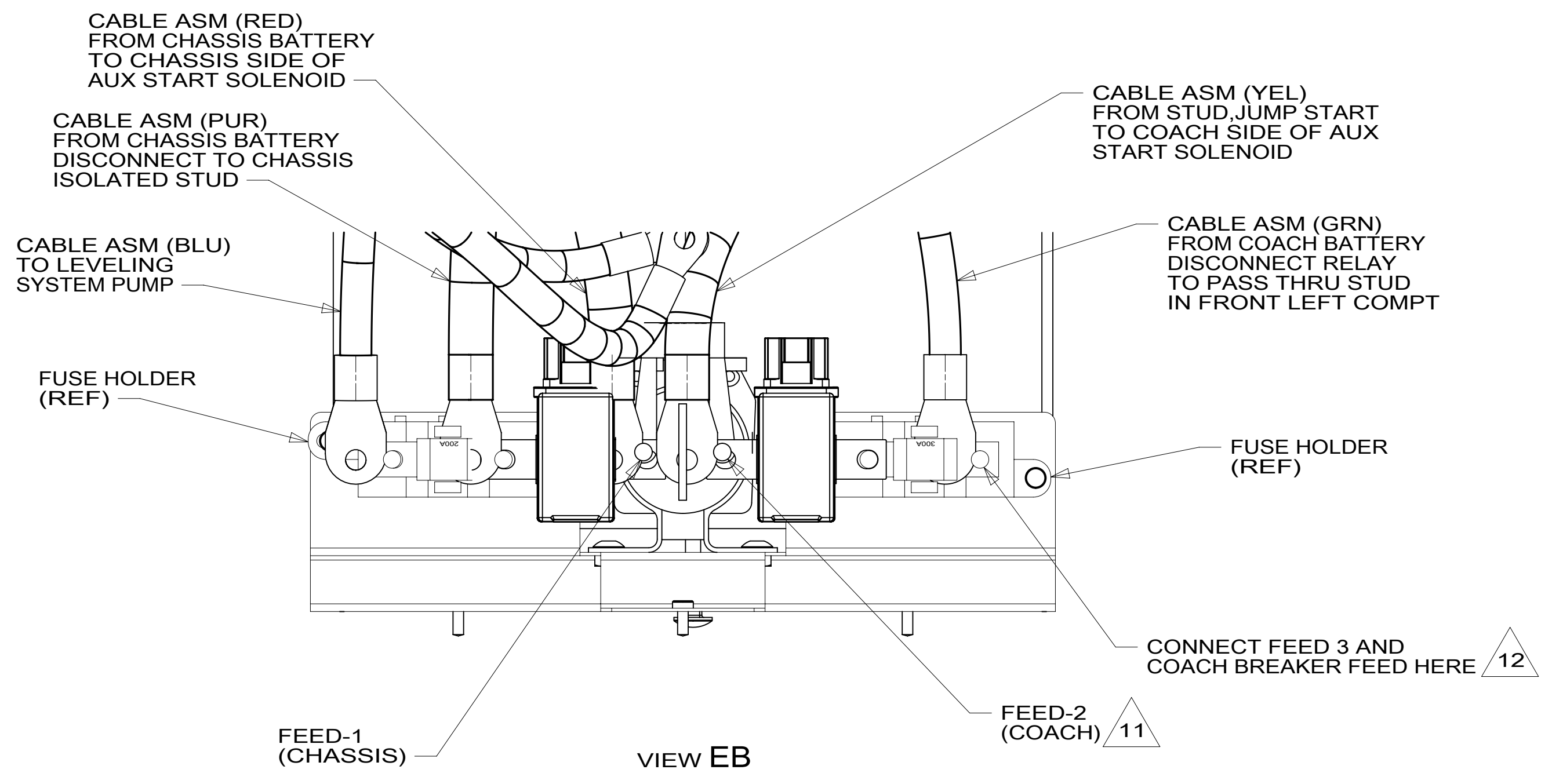
DESCRIPTION: WIRING INSTL-CHASSIS		
SHEET: 4 OF 8	ITEM/PART NO: 000021481 / 31425501000	REV
		30-Jan-2017



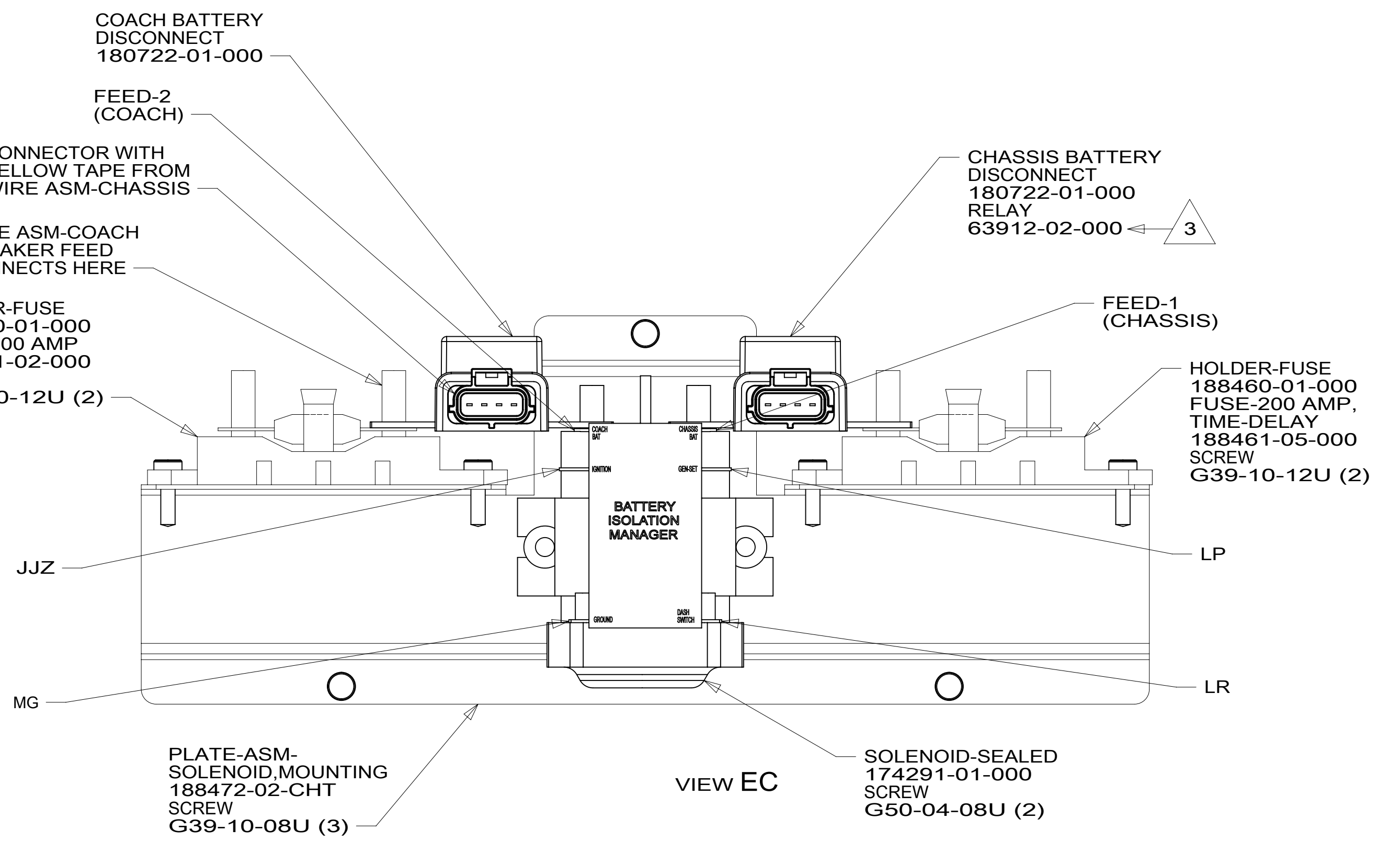
DETAIL EA



DETAIL EA (BACK VIEW-COMPONENTS)



VIEW EB



VIEW EC

- 5 CIRCUIT BREAKER-30 AMP 93655-02-000 (3)
SCREW G52-06-05U (3)
SPACER-CIRCUIT BREAKER 141789-01-000 (3)
- 5 CIRCUIT BREAKER-15 AMP 93654-02-000 (3)
SCREW G52-06-05U (3)
SPACER-CIRCUIT BREAKER 141789-01-000 (3)
- 282 PLUG-PLASTIC 81211-06-000
29W 81211-06-000 (2)
- CIRCUIT BREAKER-25 AMP 093655-01-000 (2)
SCREW G52-06-05U (2)
SPACER-CIRCUIT BREAKER 141789-01-000 (2)

- CIRCUIT BREAKER-40 AMP 93655-03-000 (2)
SCREW G19-10-08U (2) 5
- LABEL-CIRCUIT BREAKER 093236-82-000
- CIRCUIT BREAKER-120 AMP 188890-01-000
SCREW G39-10-12U (2)
- CIRCUIT BREAKER-30 AMP 093655-02-000
SCREW G52-06-05U
SPACER-CIRCUIT BREAKER 141789-01-000 282

282

- 7 FROM WIRE ASM-CHASSIS MARKED WITH GOLD TAPE.
- 6 FROM WIRE ASM-CHASSIS MARKED WITH YELLOW TAPE.
- 5 REPLACE EXISTING SCREW TO PROPERLY ATTACH BREAKER TO BUSS BAR.
- 4 FROM WIRE ASM-SLIDEOUT POWER.
- 3 RELAY CONNECTS TO WIRE ASM-CHASSIS. (CHASSIS DISCONNECT LOCKOUT RELAY)
- 2 FROM WIRE ASM-CHASSIS. TIE BACK TO HARNESS WITH 29W
- 1 CIRCUITS BRANCH FROM WIRE ASM-CHASSIS.

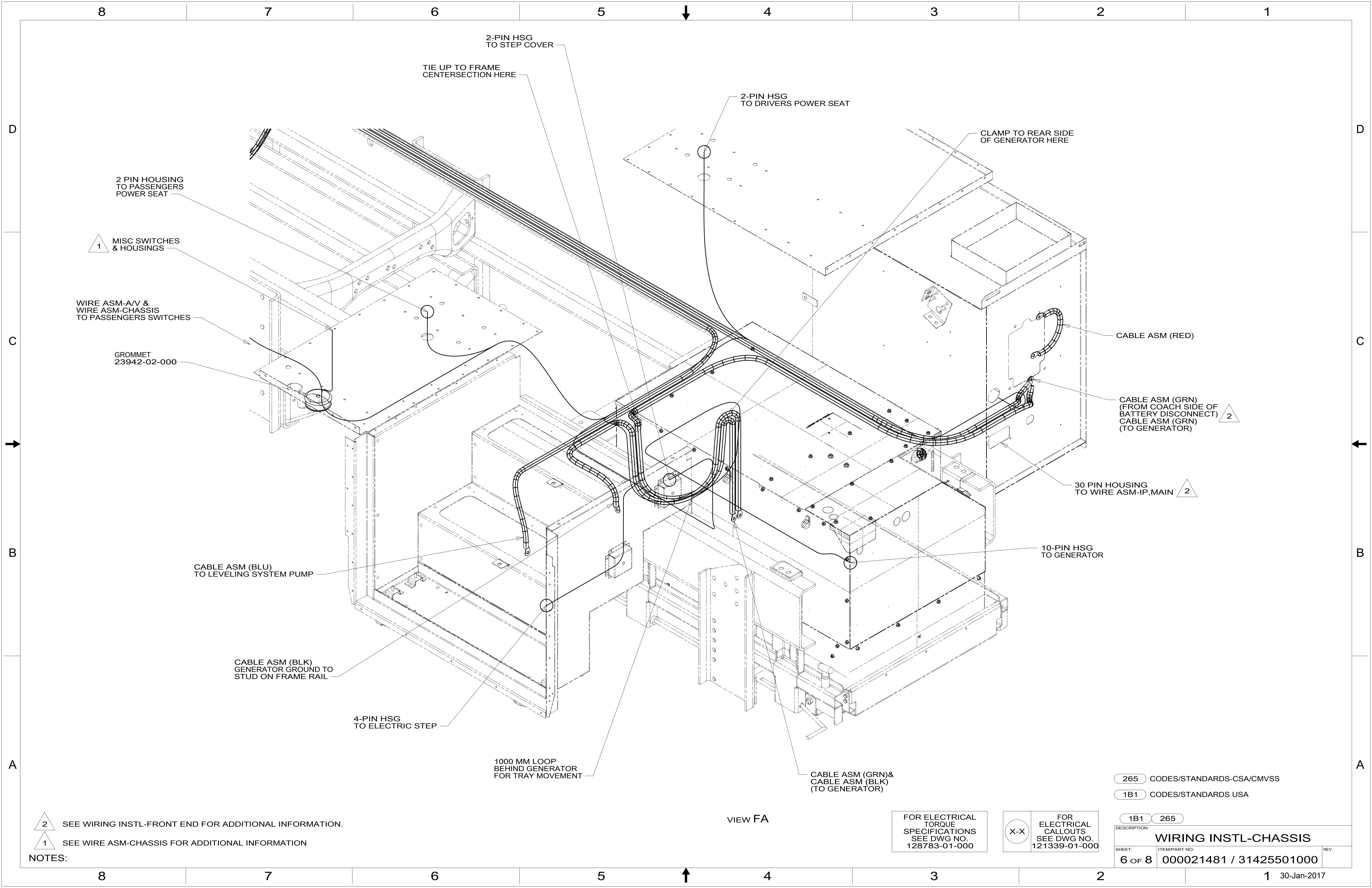
- 12 WIRE TO BE MARKED BY WRAP OF GRN TAPE 19 MM WIDE WITHIN 50 MM OF END.
- 11 WIRE TO BE MARKED BY WRAP OF YEL TAPE 19 MM WIDE WITHIN 50 MM OF END.
- 10 WIRE TO BE MARKED BY WRAP OF BRN TAPE 19 MM WIDE WITHIN 50 MM OF END.
- 9 WIRE TO BE MARKED BY WRAP OF BLU TAPE 19 MM WIDE WITHIN 50 MM OF END.
- 8 WIRE TO BE MARKED BY WRAP OF WHT TAPE 19 MM WIDE WITHIN 50 MM OF END.

- 29W SOLAR PANEL/BATTERY CHRNG W/O
- 282 SOLAR PANEL - 100 WATT
- 265 CODES/STANDARDS-CSA/CMVSS
- 1B1 CODES/STANDARDS USA

FOR ELECTRICAL TORQUE SPECIFICATIONS SEE DWG NO. 128783-01-000

FOR ELECTRICAL CALLOUTS SEE DWG NO. 121339-01-000

DESCRIPTION:	1B1 265	
WIRING INSTL-CHASSIS		
SHEET:	ITEM/PART NO:	REV
5 OF 8	000021481 / 31425501000	



2 SEE WIRING INSTL-FRONT END FOR ADDITIONAL INFORMATION.

1 SEE WIRE ASM-CHASSIS FOR ADDITIONAL INFORMATION

NOTES:

FOR ELECTRICAL TORQUE SPECIFICATIONS SEE DWG NO. 128783-01-000

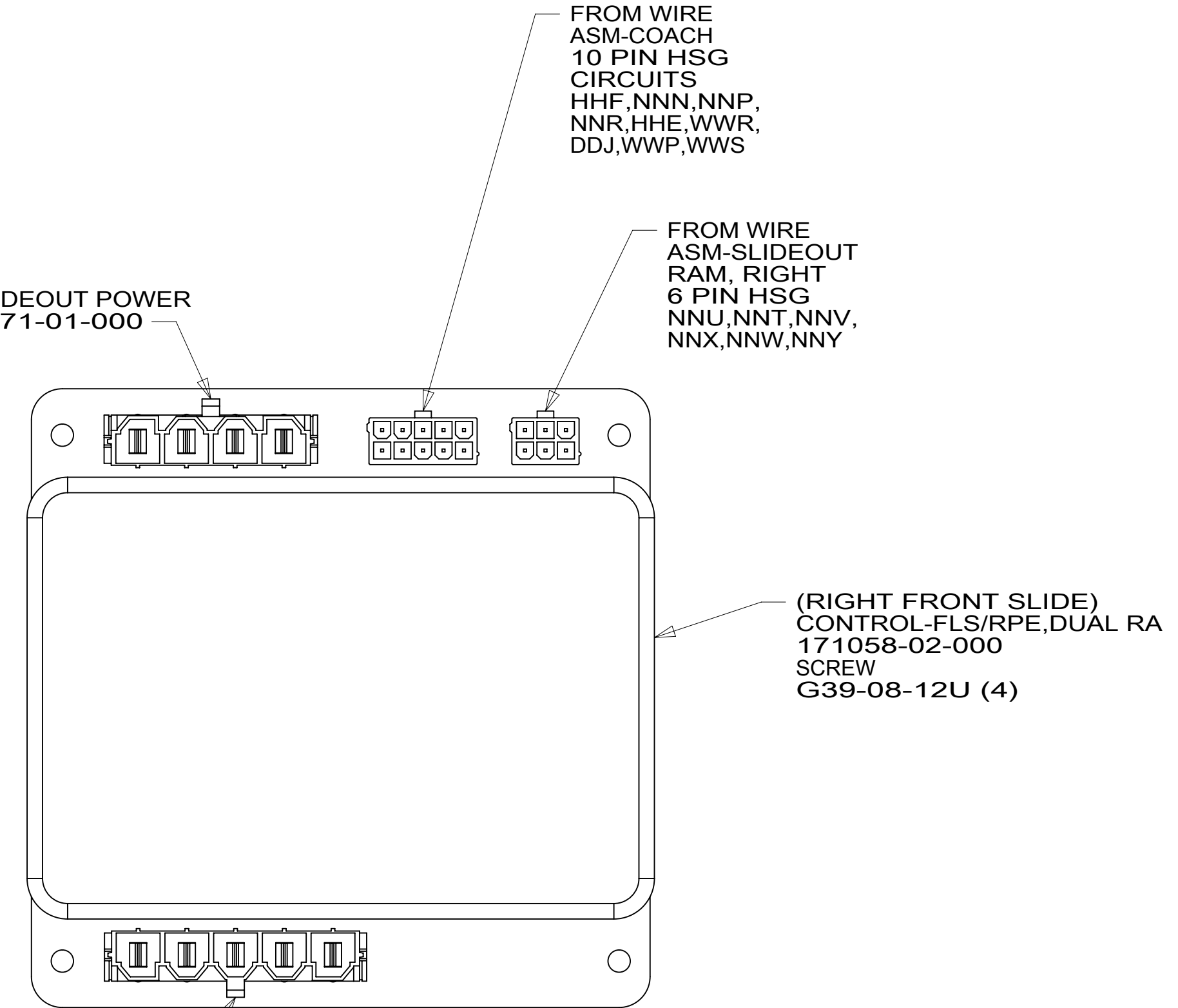
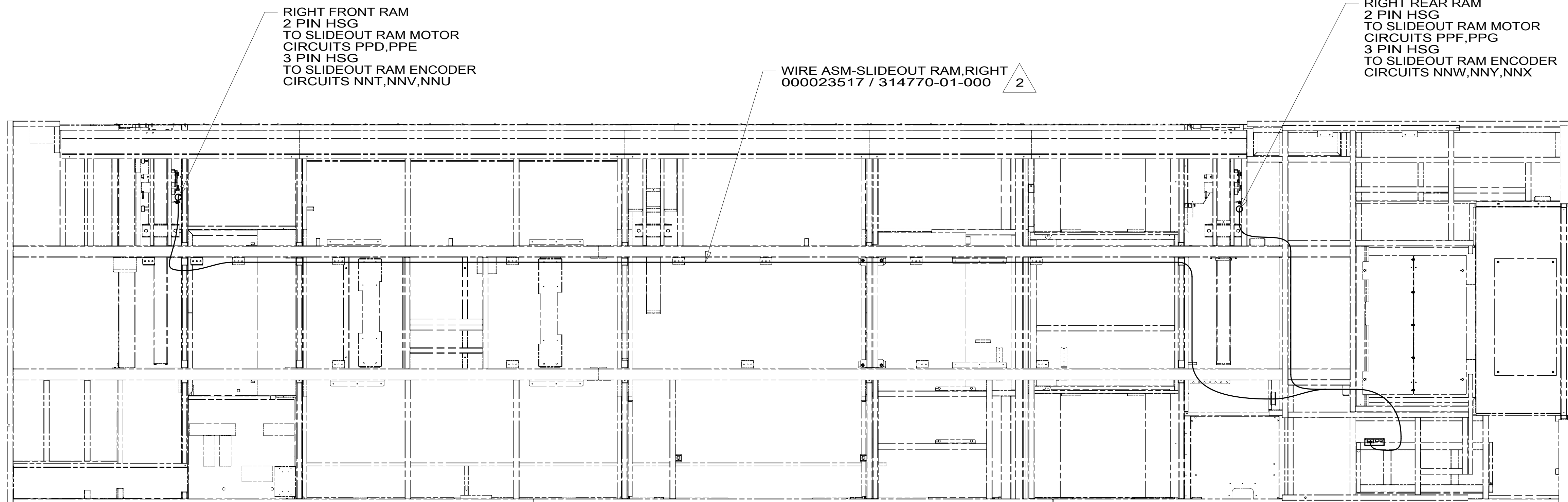
FOR ELECTRICAL CALLOUTS SPECIFICATIONS SEE DWG NO. 121339-01-000

265 CODES/STANDARDS-CSA/CMVSS

1B1 CODES/STANDARDS USA

DESCRIPTION: WIRING INSTL-CHASSIS	
SHEET: 6 OF 8	ITEM/PART NO: 000021481 / 31425501000
REV	

8 7 6 5 4 3 2 1



VIEW GA

2 WIRES ROUTED ALONG FRAME RAIL.

1. AT MINIMUM ALL WIRES TO BE SUPPORTED AND SECURED PER CODE REQUIREMENTS. USE CLAMP 10495 OR 10497 OR WIRE TIE 8343 OR 108046 AND SCREW G67-XX-XXX OR G56-XX-XXX AS APPROPRIATE FOR INSTALLATION.

NOTES:

265 CODES/STANDARDS-CSA/CMVSS

1B1 CODES/STANDARDS USA

1B1 265

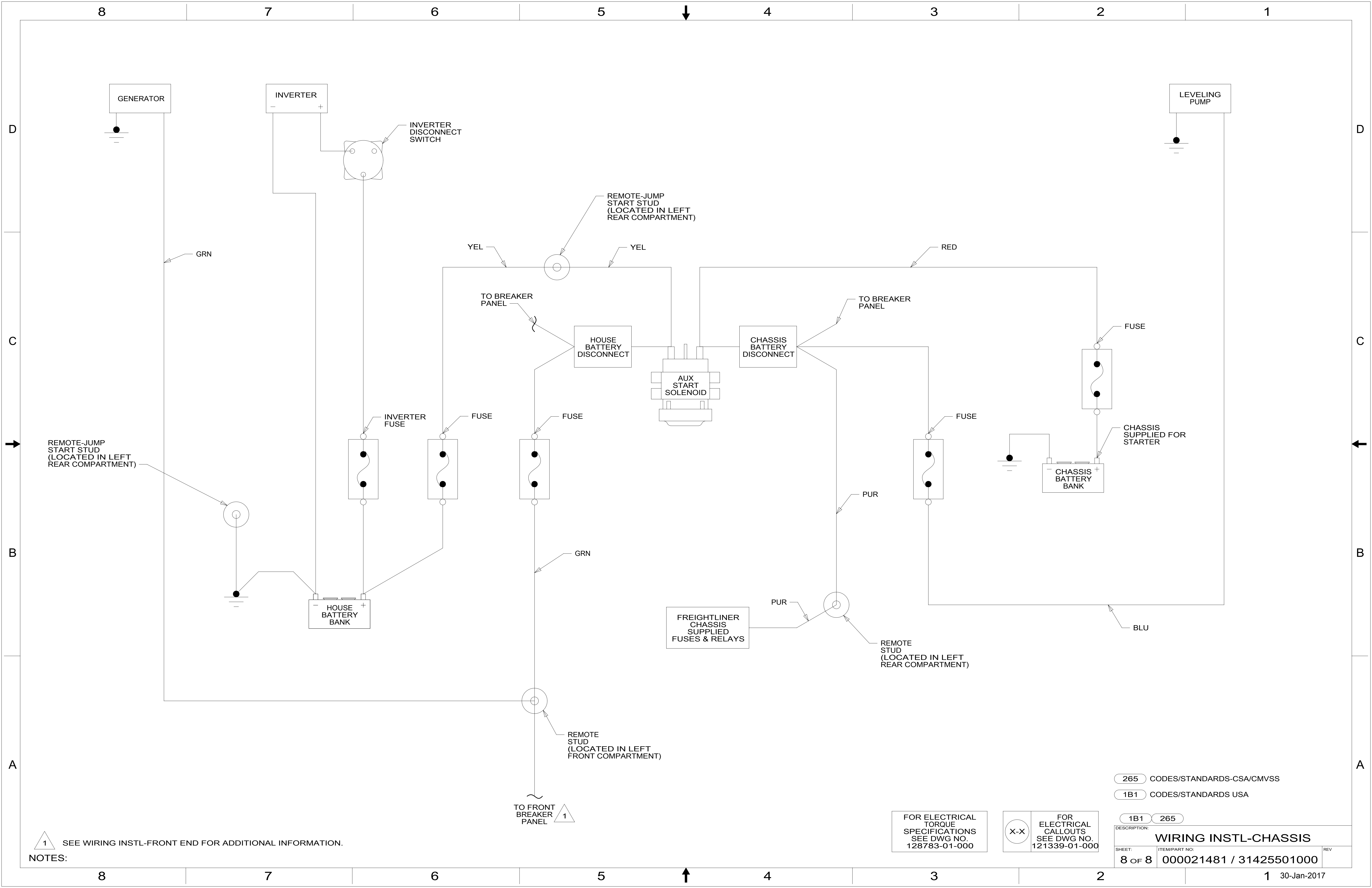
FOR ELECTRICAL TORQUE SPECIFICATIONS SEE DWG NO. 128783-01-000

FOR ELECTRICAL CALLOUTS SEE DWG NO. 121339-01-000

DESCRIPTION: WIRING INSTL-CHASSIS

SHEET: 7 OF 8 ITEM/PART NO: 000021481 / 31425501000 REV

8 7 6 5 4 3 2 1 30-Jan-2017



1 SEE WIRING INSTL-FRONT END FOR ADDITIONAL INFORMATION.

FOR ELECTRICAL TORQUE SPECIFICATIONS SEE DWG NO. 128783-01-000

FOR ELECTRICAL CALLOUTS SEE DWG NO. 121339-01-000

- 265 CODES/STANDARDS-CSA/CMVSS
- 1B1 CODES/STANDARDS USA

DESCRIPTION: 1B1 265		
WIRING INSTL-CHASSIS		
SHEET: 8 OF 8	ITEM/PART NO: 000021481 / 31425501000	REV