

8 7 6 5 4 3 2 1

D

D

C

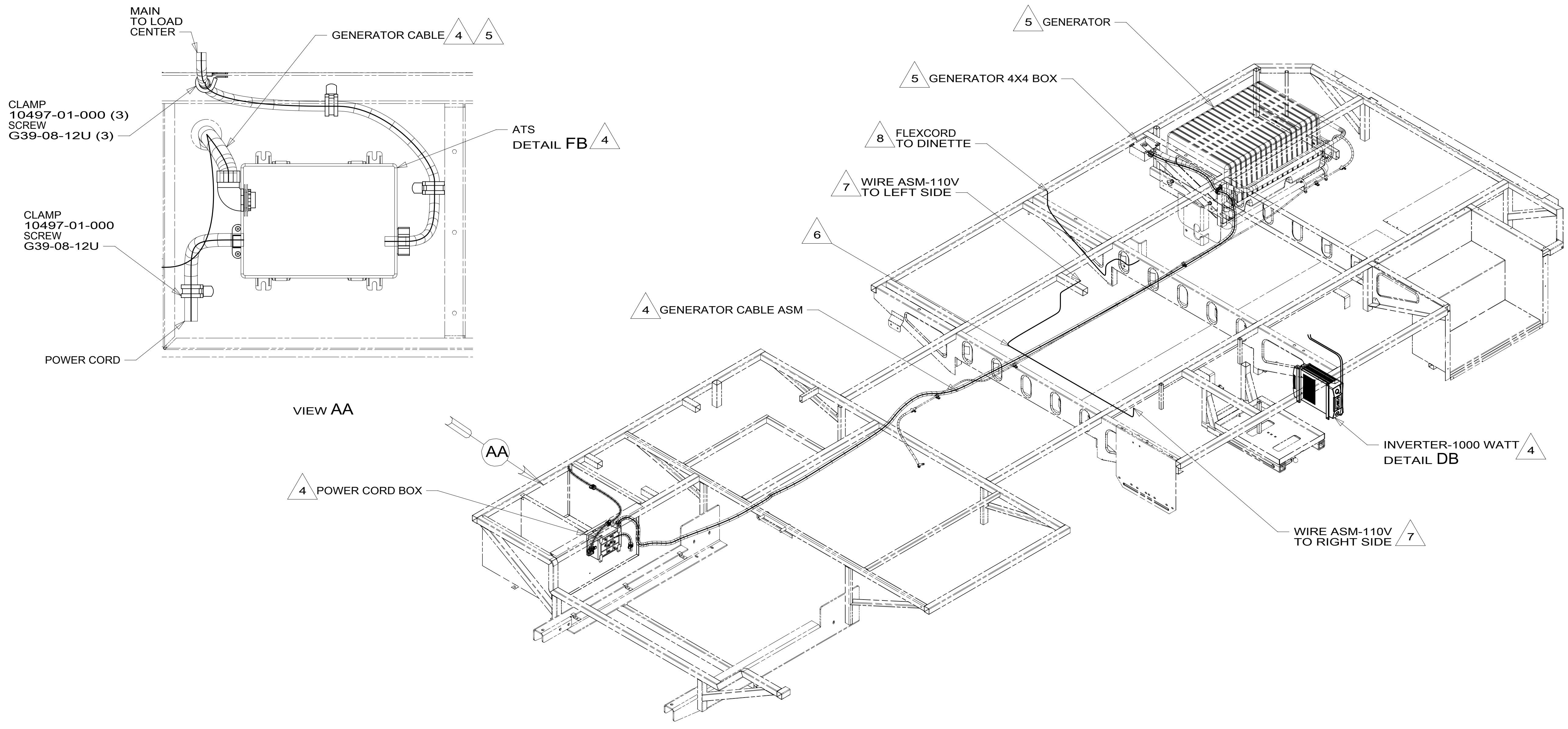
C

B

B

A

A



- 8 FLEX CORD IS PART OF WIRE ASM-CHASSIS.
 - 7 WIRING PASSES THROUGH FLOOR IN THIS AREA.
 - 6 WIRING ROUTED UNDER FLOOR IN THIS AREA.
 - 5 SEE GENERATOR INSTL FOR ADDITIONAL INFORMATION.
 - 4 SEE WIRING INSTL-CHASSIS FOR ADDITIONAL INFORMATION.
3. ALL GROUND WIRE TO BE COVERED WITH TUBING 8041-02-000.
 2. ALL 110V WIRE TO BE CLAMPED WITH CLAMP 10497-05-000 WITHIN 200MM OF OUTLET BOXES, USE SCREW G67-10-12B.
 1. ALL WIRES TO BE SECURED WITH CLAMP 10495-01-000 OR CLIP 80734-01-000 EVERY 600MM. USE SCREW G67-10-12B UNLESS OTHERWISE SPECIFIED.

NOTES:

265 CODES/STANDARDS-CSA/CMVSS
 1B1 CODES/STANDARDS USA
 1B1 265

WINNEBAGO
 COPYRIGHT 2016 WINNEBAGO INDUSTRIES, INC.

DSNR:	ALL DIMENSIONS ARE IN MILLIMETERS	
DIFFR:	MATERIAL:	
UNSPECIFIED TOLERANCES:	WEIGHT: (LBS)	FIRST USED:
WHOLE DIM (X) : 3		17 727K
ONE-PLACE (X.X) : 1.5		
TWO-PLACE (X.XX) : 0.50		
ANGLE : 1°		

REFER TO ES0018 FOR FASTENER TIGHTENING GUIDELINES

WIRING INSTL-BODY, 110V

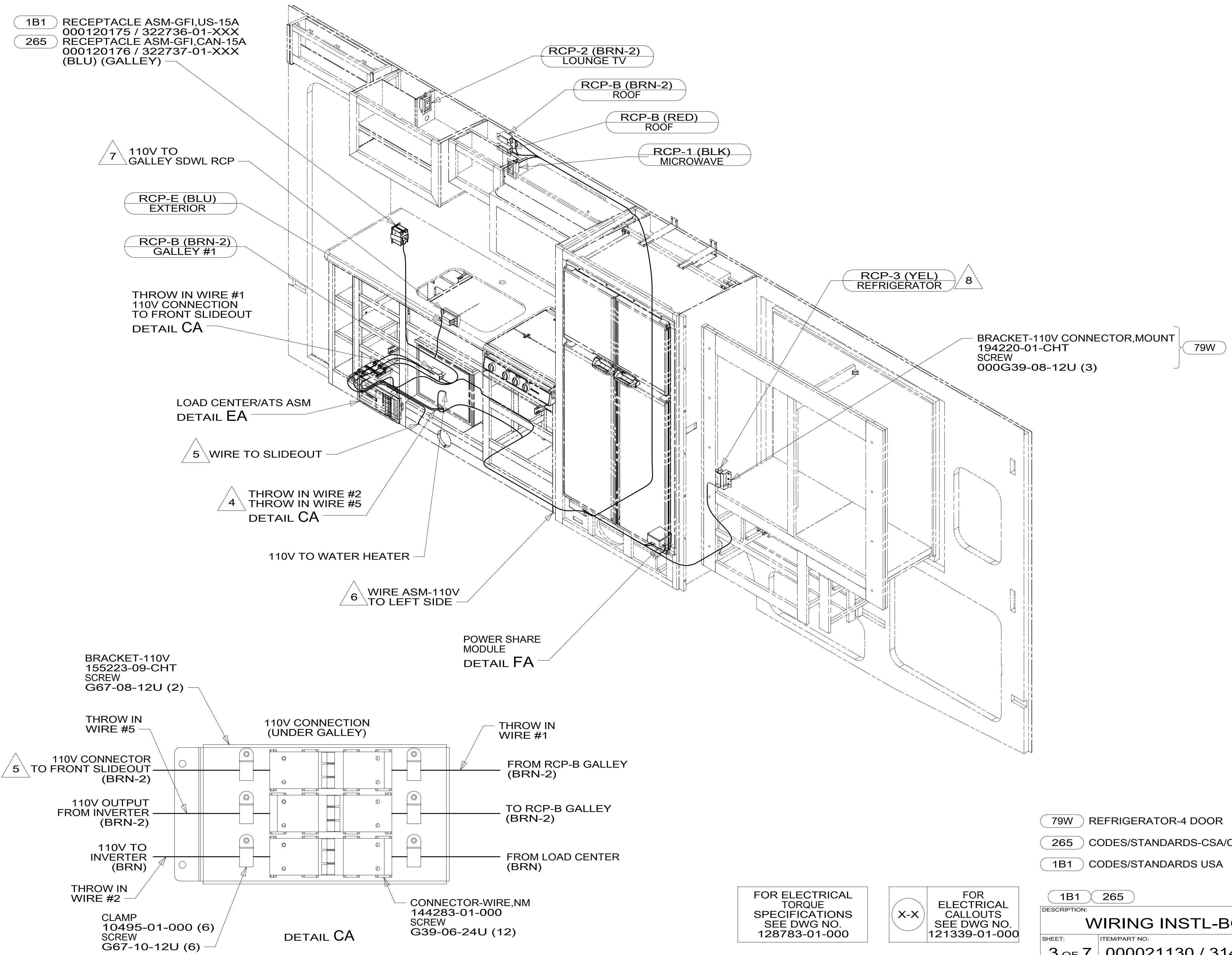
SHEET: 1 OF 7	ITEM/PART NO: 000021130 / 31417001000	REV:
---------------	---------------------------------------	------

FOR ELECTRICAL TORQUE SPECIFICATIONS SEE DWG NO. 128783-01-000

X-X

FOR ELECTRICAL CALLOUTS SEE DWG NO. 121339-01-000

8 7 6 5 4 3 2 1



- 8 LOCATE REFRIGERATOR RECEPTACLE ON TIEDOWN BRACKET.
- 7 WIRE IN SIDEWALL
- 6 WIRE ROUTED THROUGH FLOOR AT THIS POINT.
- 5 FLEX CORD PART OF WIRE ASM-CHASSIS.
- 4 WIRE CONNECTS TO INVERTER.
- 3. ALL GROUND WIRE TO BE COVERED WITH TUBING 8041-02-000.
- 2. ALL 110V WIRE TO BE CLAMPED WITH CLAMP 10495-05-000 WITHIN 200MM OF OUTLET BOXES, USE SCREW G67-10-12B.
- 1. ALL WIRES TO BE SECURED WITH CLAMP 10495-01-000 OR CLIP 80734-01-000 EVERY 600MM. USE SCREW G67-10-12B UNLESS OTHERWISE SPECIFIED.

NOTES:

- 79W REFRIGERATOR-4 DOOR
- 265 CODES/STANDARDS-CSA/CMVSS
- 1B1 CODES/STANDARDS USA

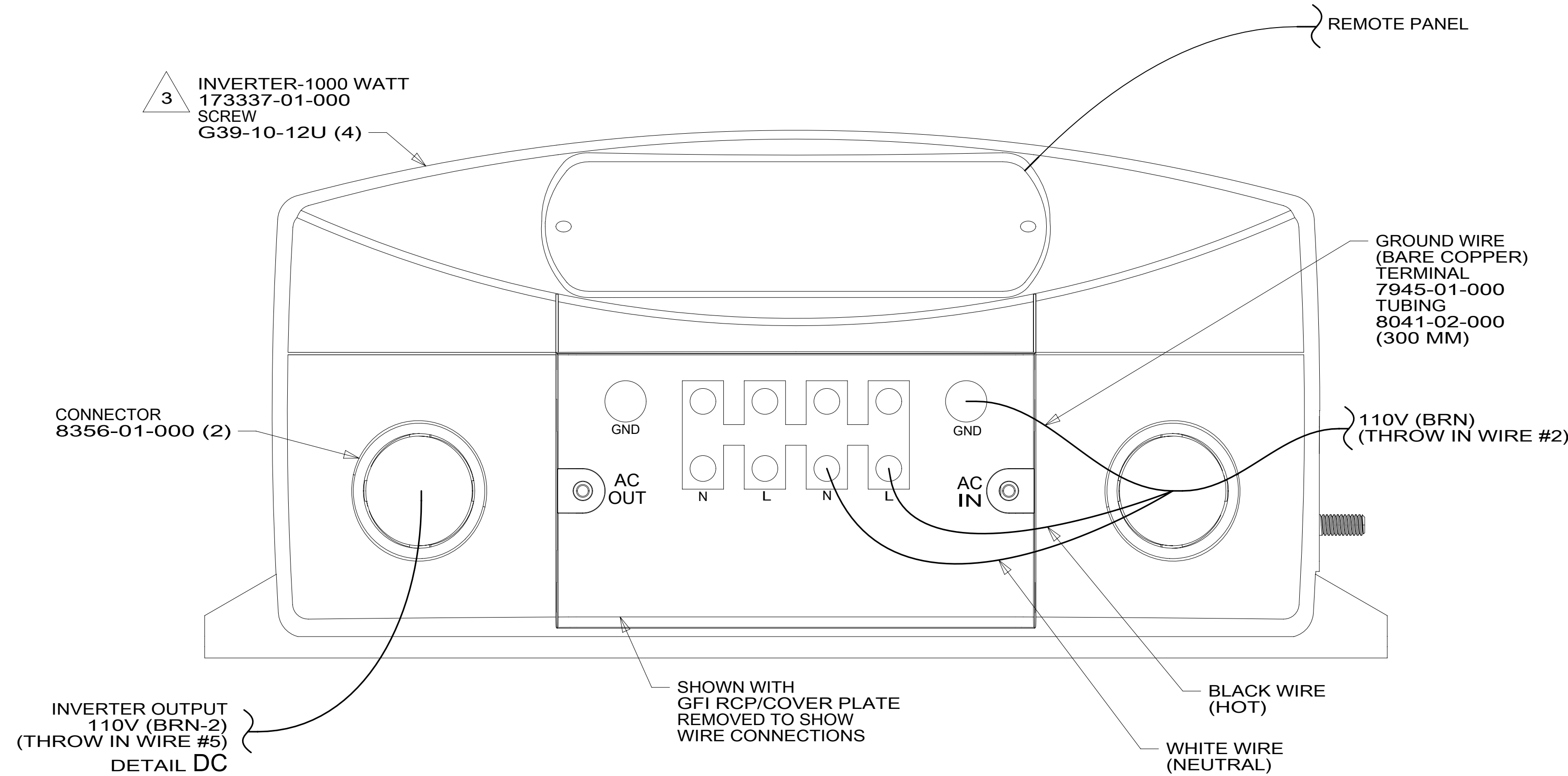
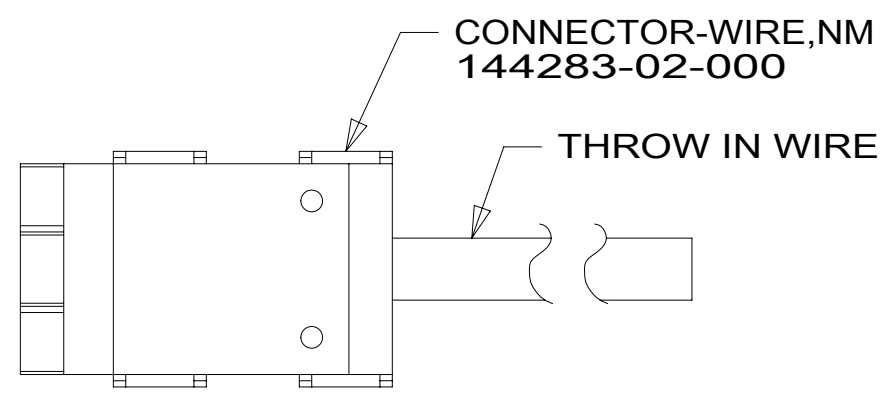
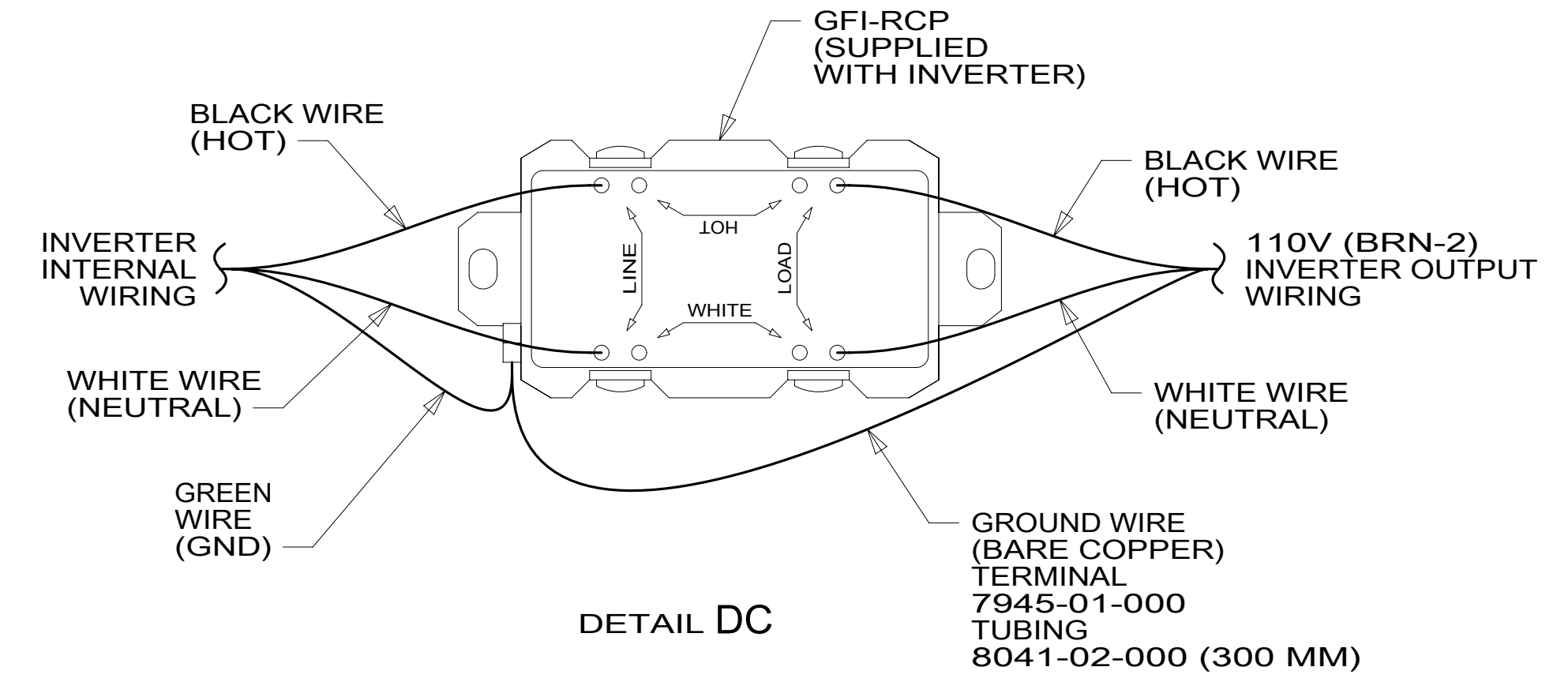
FOR ELECTRICAL TORQUE SPECIFICATIONS SEE DWG NO. 128783-01-000

FOR ELECTRICAL CALLOUTS SEE DWG NO. 121339-01-000

DESCRIPTION:	
WIRING INSTL-BODY, 110V	
SHEET:	ITEM/PART NO. REV
3 OF 7	000021130 / 31417001000

RED	1B1	136135-07-060	
	265	136136-07-060	
YEL	1B1	136131-05-040	
	265	136134-05-040	
BLK	1B1	136135-06-044	53B
		136135-06-069	1BU
	265	136136-06-044	53B
		136136-06-069	1BU
BLK-2	1B1	136135-22-042	53B
	265	136136-22-042	53B
BRN	1B1	136131-03-011	2
	265	136134-03-011	2
BRN-2	1B1	136131-19-060	2
	265	136134-19-060	2
BLU	1B1	136131-02-180	
	265	136134-02-180	
WHT	1B1	136135-09-036	53B
	265	136136-09-036	53B
MAIN	1B1	136137-01-090	
	265	136138-01-090	

GENERATOR CABLE ASM	1B1	164957-09-064	
	265	164957-10-064	
THROW IN #1	1B1	136131-19-007	2
	265	136134-19-007	2
THROW IN #2	1B1	136131-03-018	2 4
	265	136134-03-018	2 4
THROW IN #3	1B1	-----	
	265	-----	
THROW IN #4	1B1	136131-19-032	
	265	136134-19-032	
THROW IN #5	1B1	136131-19-018	2 4
	265	136134-19-018	2 4
ATS GND		136145-01-015	
GROUND		136145-02-022	



- 4 FOR ADDITIONAL INFORMATION SEE DETAIL DB.
- 3 INVERTER SUPPLIED WITH REMOTE PANEL. SEND PANEL TO MANUFACTURING LINE.
- 2 FOR CONNECTOR INSTALLATION SEE DETAIL DA.

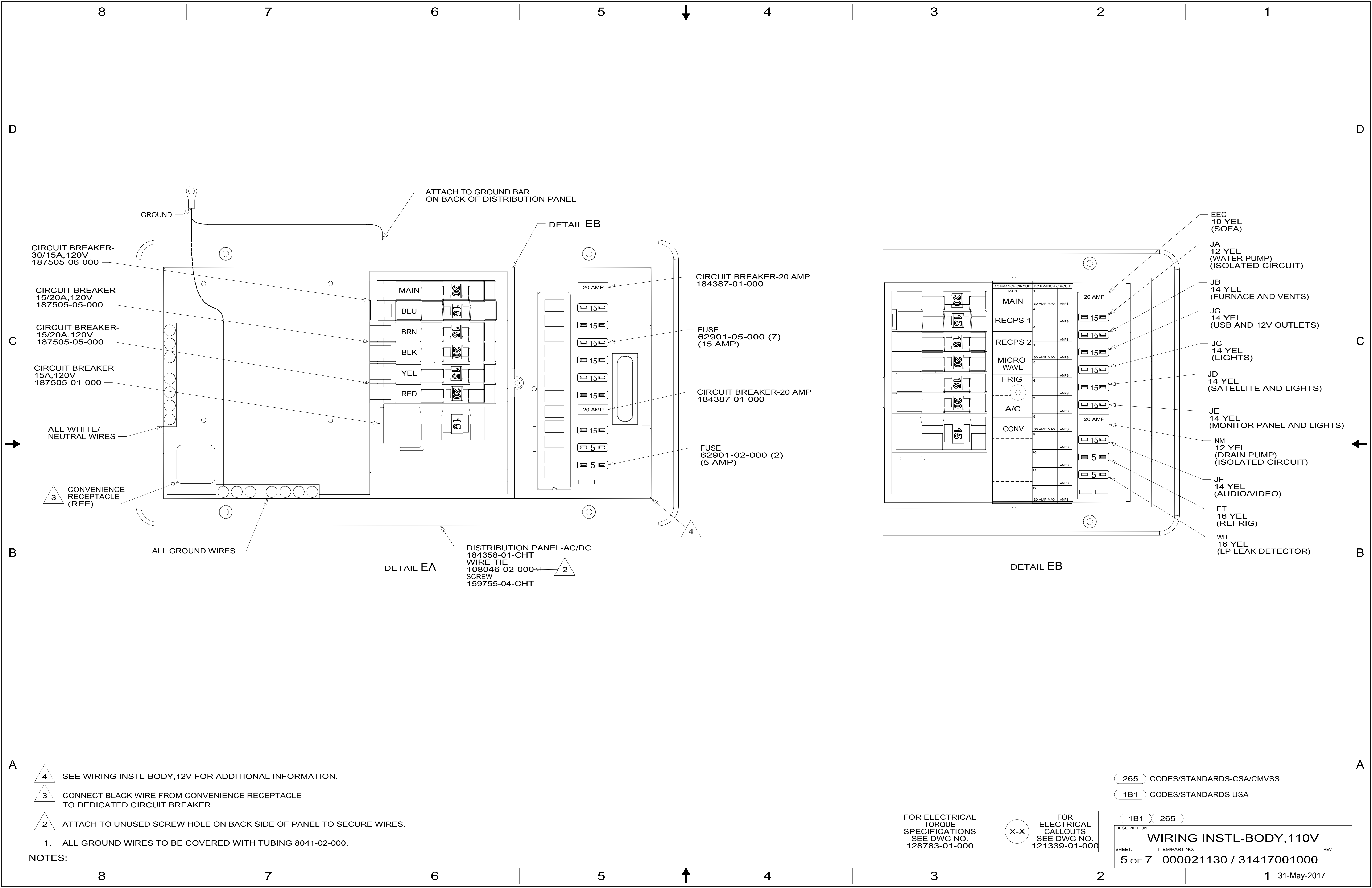
NOTES:
1. ALL GROUND WIRES TO BE COVERED WITH TUBING 8041-02-000.

FOR ELECTRICAL TORQUE SPECIFICATIONS SEE DWG NO. 128783-01-000

FOR ELECTRICAL CALLOUTS SEE DWG NO. 121339-01-000

- 1BU WTR HTR TKLS W/RECIRCUL PUMP
- 53B WTR HTR-6GAL ELECTRIC/LP GAS
- 265 CODES/STANDARDS-CSA/CMVSS
- 1B1 CODES/STANDARDS USA

DESCRIPTION:	1B1 265
WIRING INSTL-BODY, 110V	
SHEET:	ITEM/PART NO:
4 OF 7	000021130 / 31417001000
REV	



CIRCUIT BREAKER-30/15A, 120V
187505-06-000

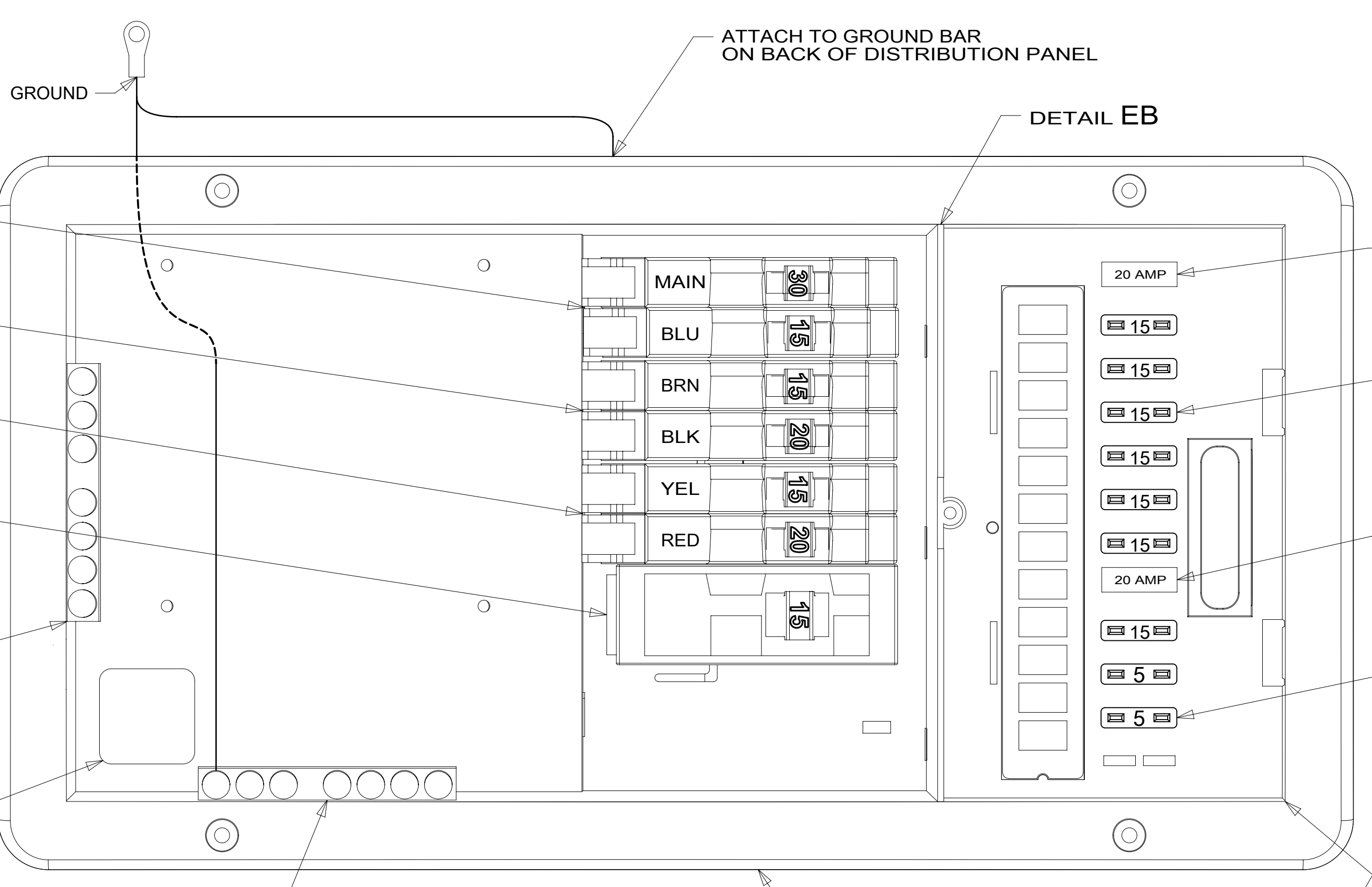
CIRCUIT BREAKER-15/20A, 120V
187505-05-000

CIRCUIT BREAKER-15/20A, 120V
187505-05-000

CIRCUIT BREAKER-15A, 120V
187505-01-000

ALL WHITE/NEUTRAL WIRES

3 CONVENIENCE RECEPTACLE (REF)



ATTACH TO GROUND BAR ON BACK OF DISTRIBUTION PANEL

DETAIL EB

GROUND

ALL GROUND WIRES

DISTRIBUTION PANEL-AC/DC
184358-01-CHT
WIRE TIE
108046-02-000
SCREW
159755-04-CHT

2

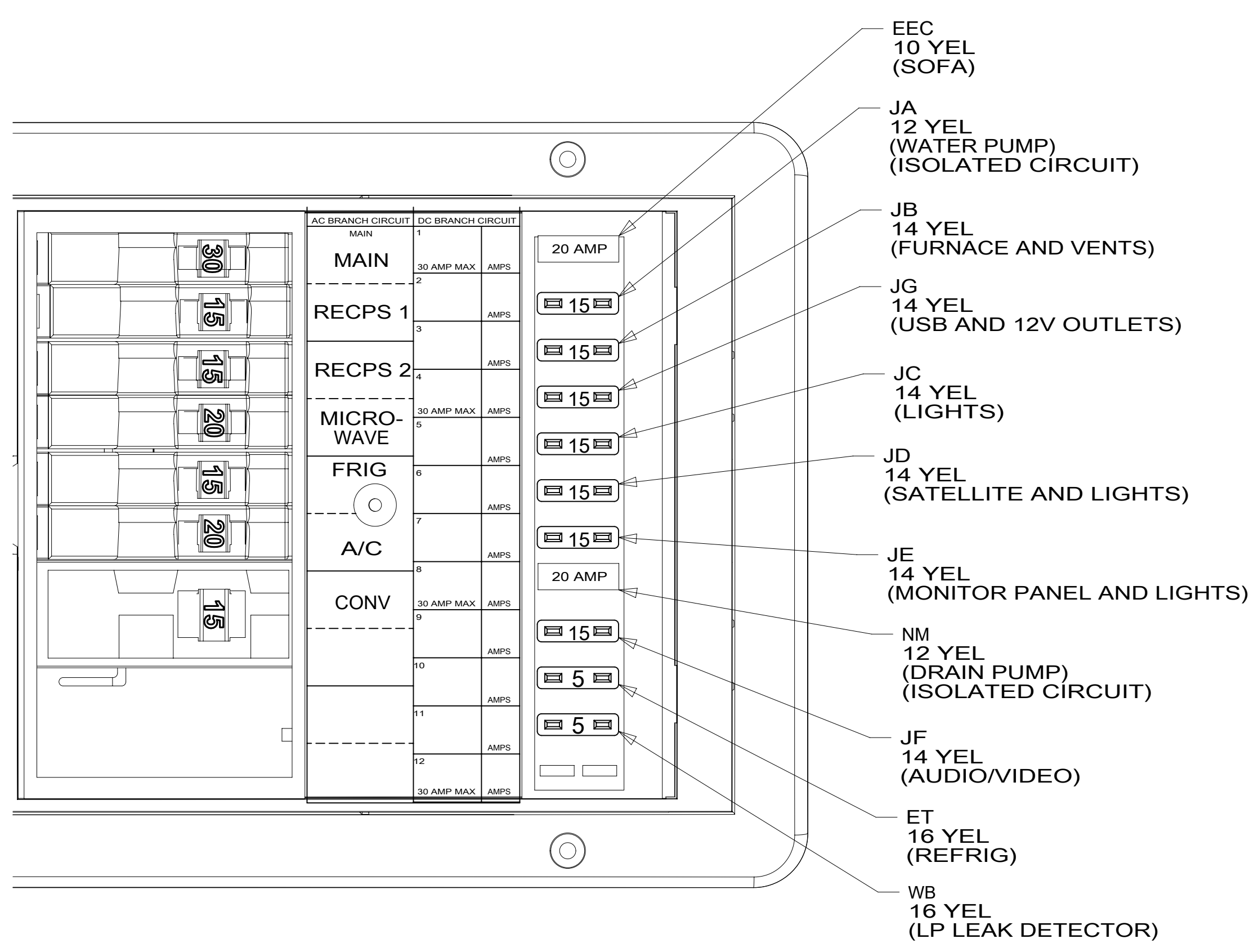
CIRCUIT BREAKER-20 AMP
184387-01-000

FUSE 62901-05-000 (7)
(15 AMP)

CIRCUIT BREAKER-20 AMP
184387-01-000

FUSE 62901-02-000 (2)
(5 AMP)

4



DETAIL EB

- 4 SEE WIRING INSTL-BODY, 12V FOR ADDITIONAL INFORMATION.
- 3 CONNECT BLACK WIRE FROM CONVENIENCE RECEPTACLE TO DEDICATED CIRCUIT BREAKER.
- 2 ATTACH TO UNUSED SCREW HOLE ON BACK SIDE OF PANEL TO SECURE WIRES.
1. ALL GROUND WIRES TO BE COVERED WITH TUBING 8041-02-000.

NOTES:

265 CODES/STANDARDS-CSA/CMVSS

1B1 CODES/STANDARDS USA

FOR ELECTRICAL TORQUE SPECIFICATIONS SEE DWG NO. 128783-01-000

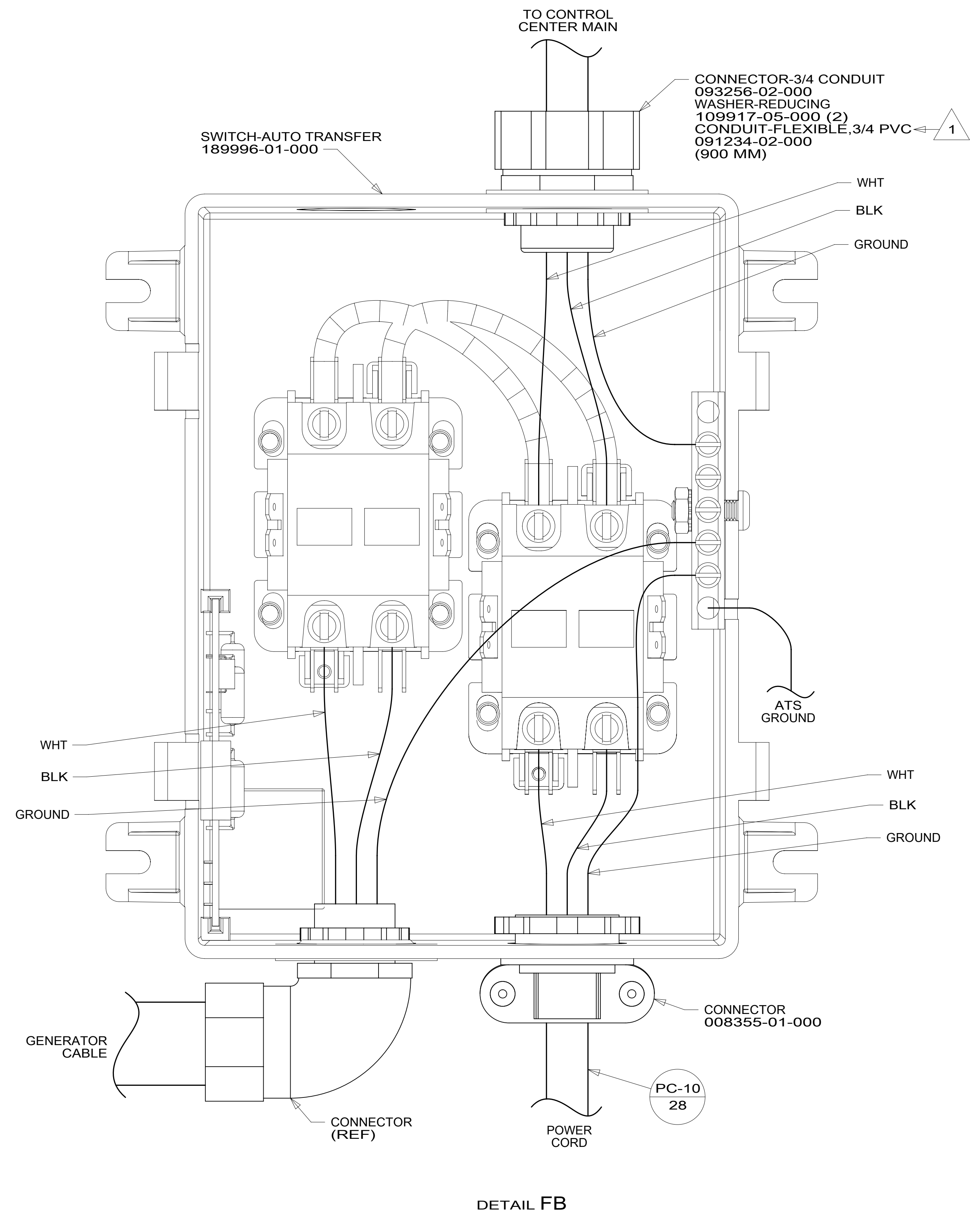
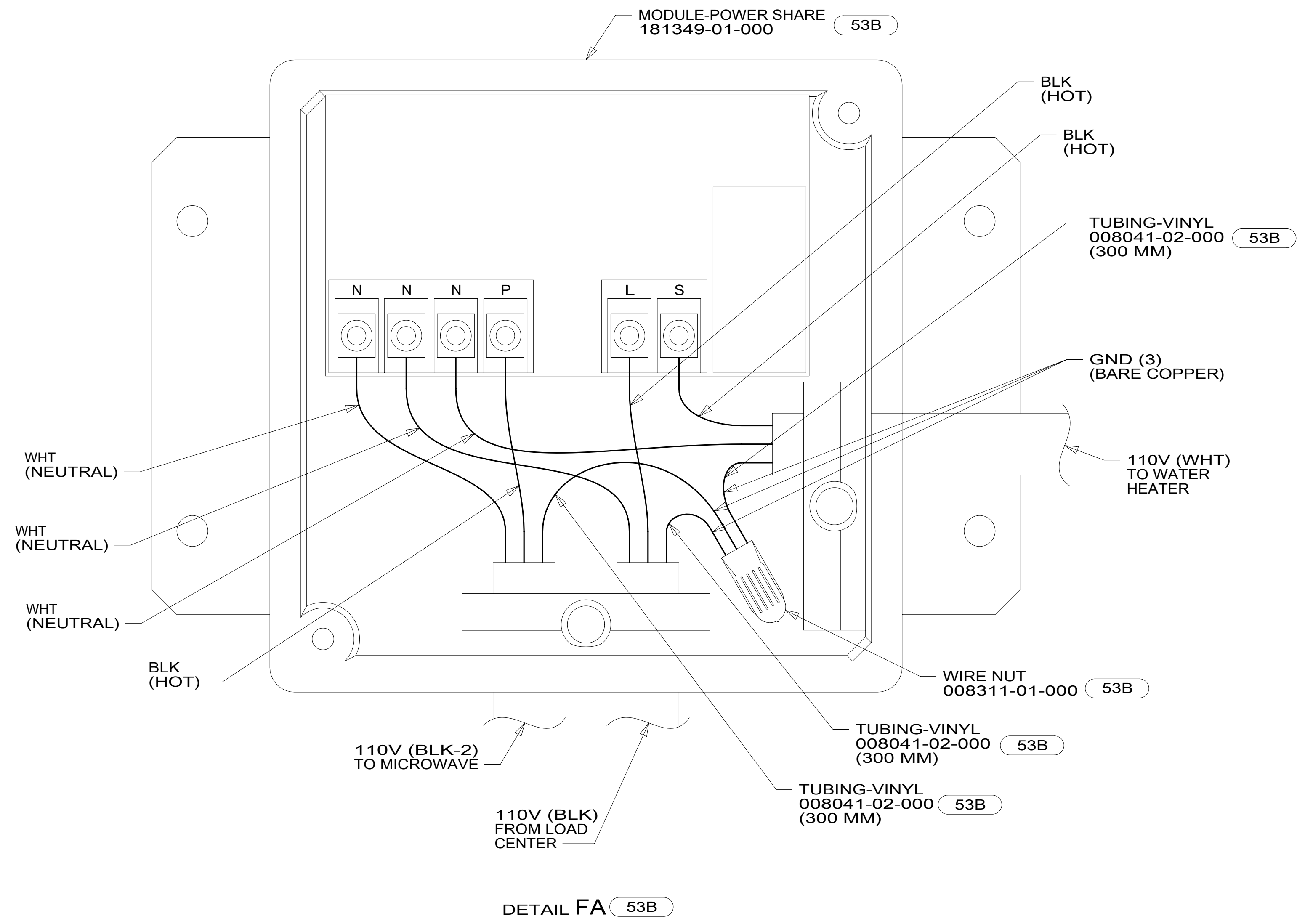
X-X

FOR ELECTRICAL CALLOUTS SEE DWG NO. 121339-01-000

DESCRIPTION:	
1B1 265	
WIRING INSTL-BODY, 110V	
SHEET:	ITEM/PART NO. REV
5 OF 7	000021130 / 31417001000

8 7 6 5 4 3 2 1

D
C
B
A



1 SECURE CONDUIT TO POWER CORD WITH TAPE 8363-01-000 FOR TRANSPORTATION PURPOSES.

NOTES:

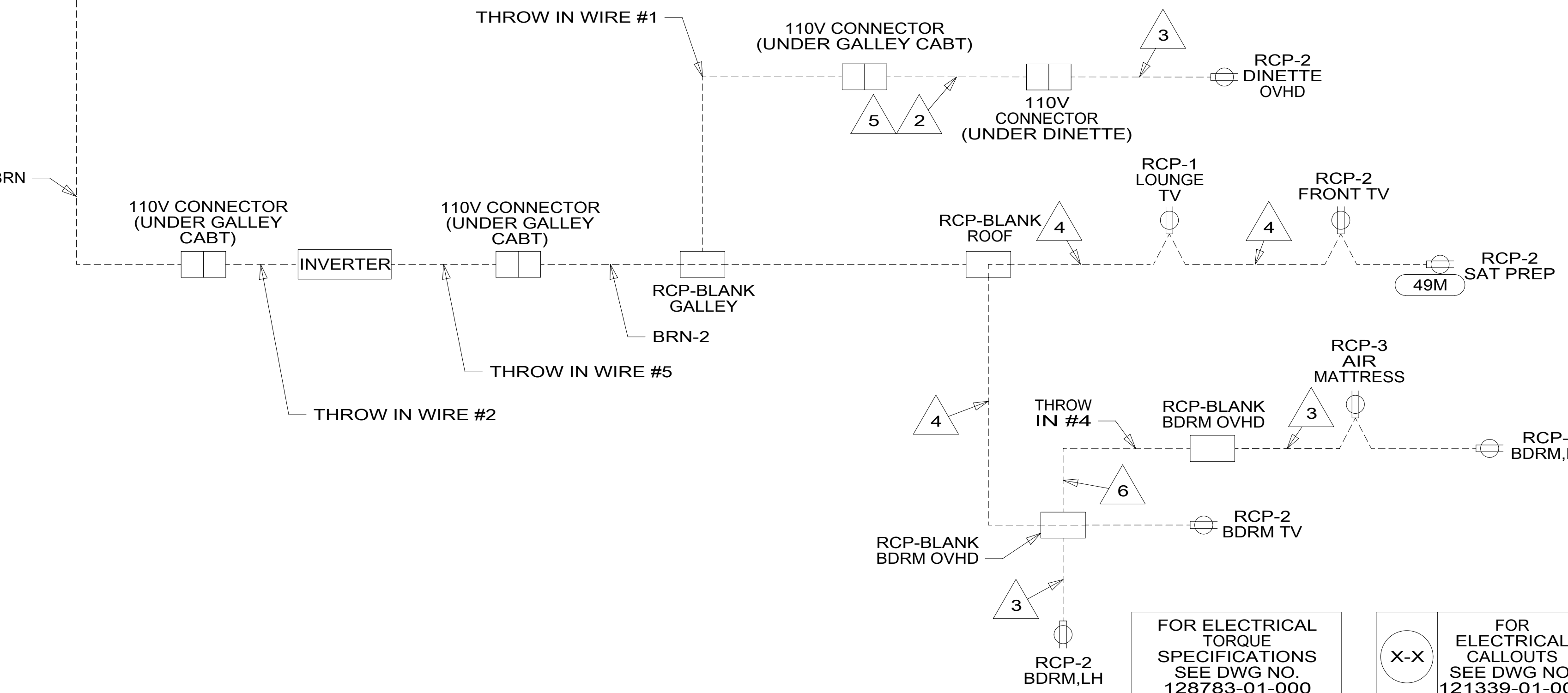
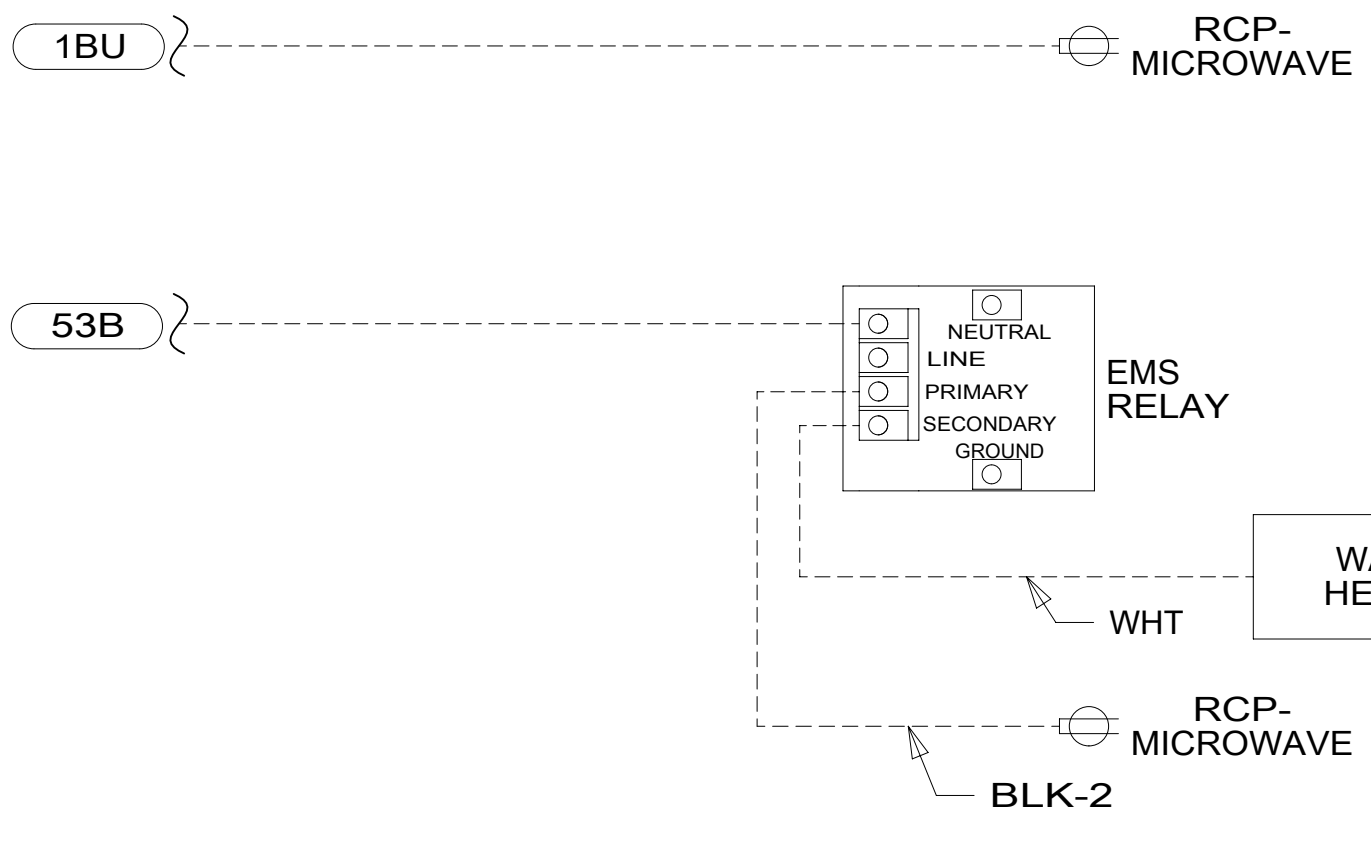
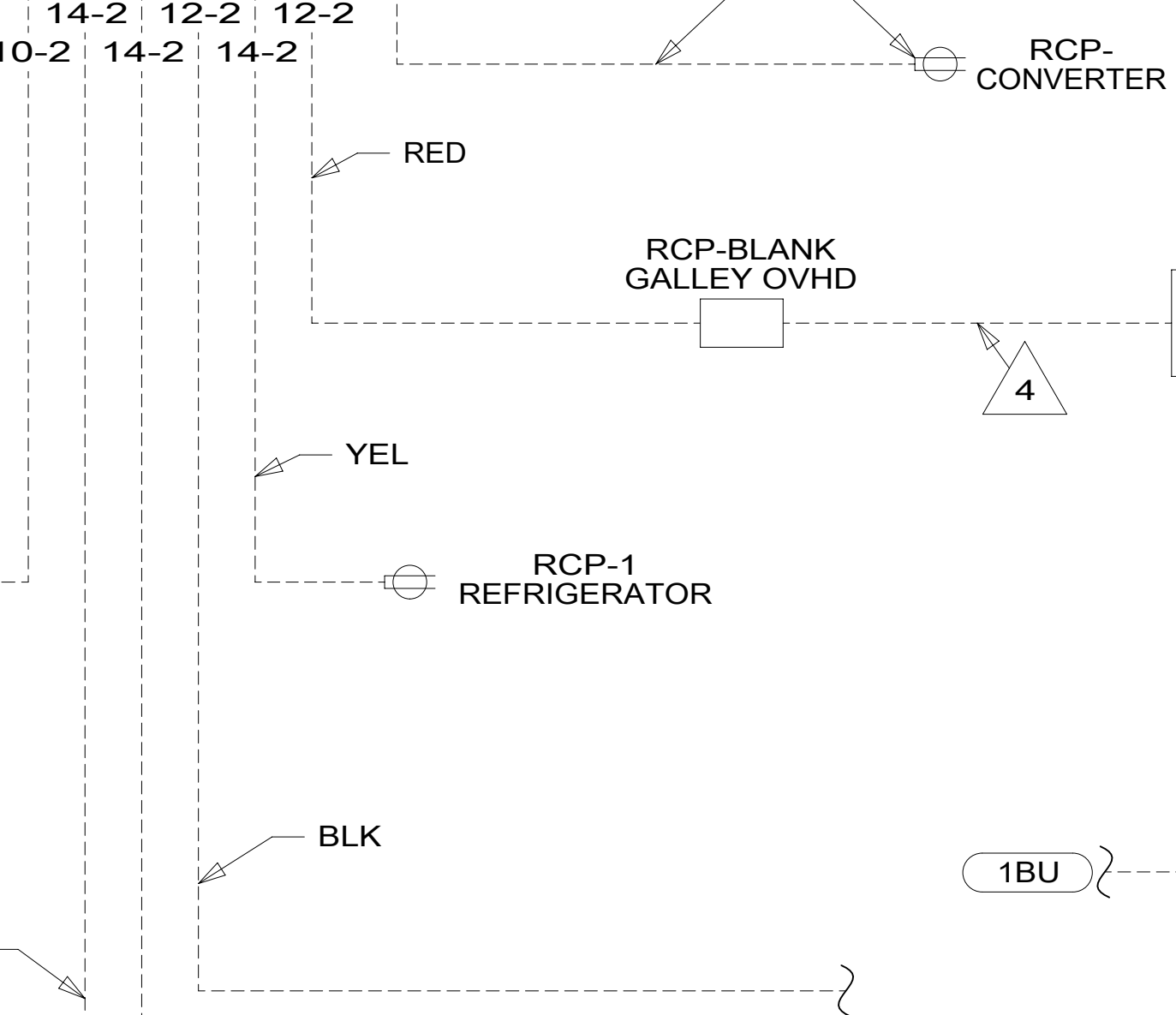
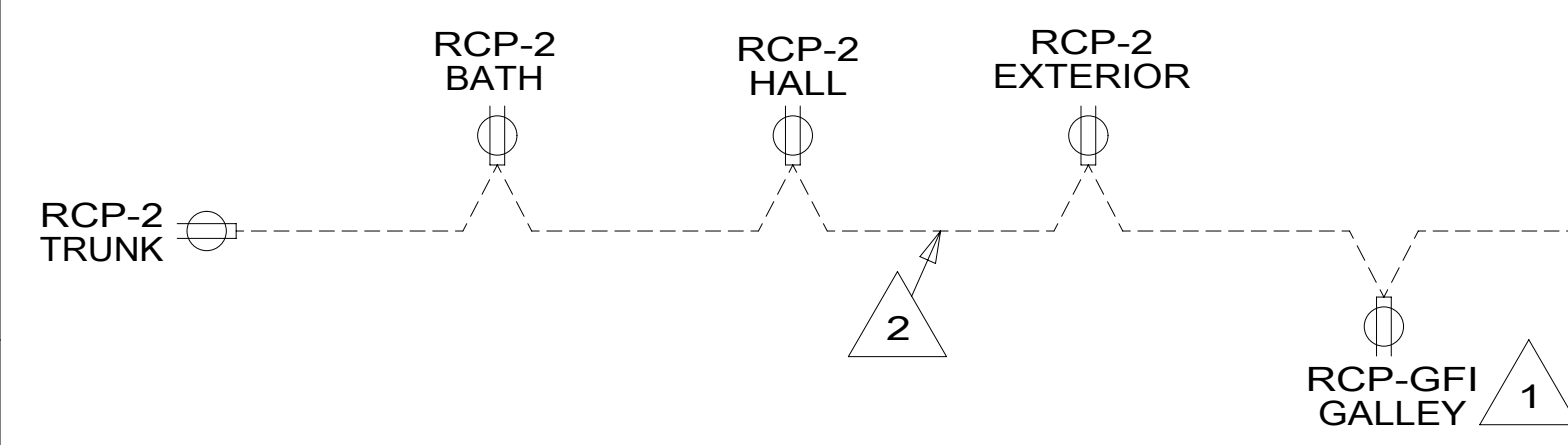
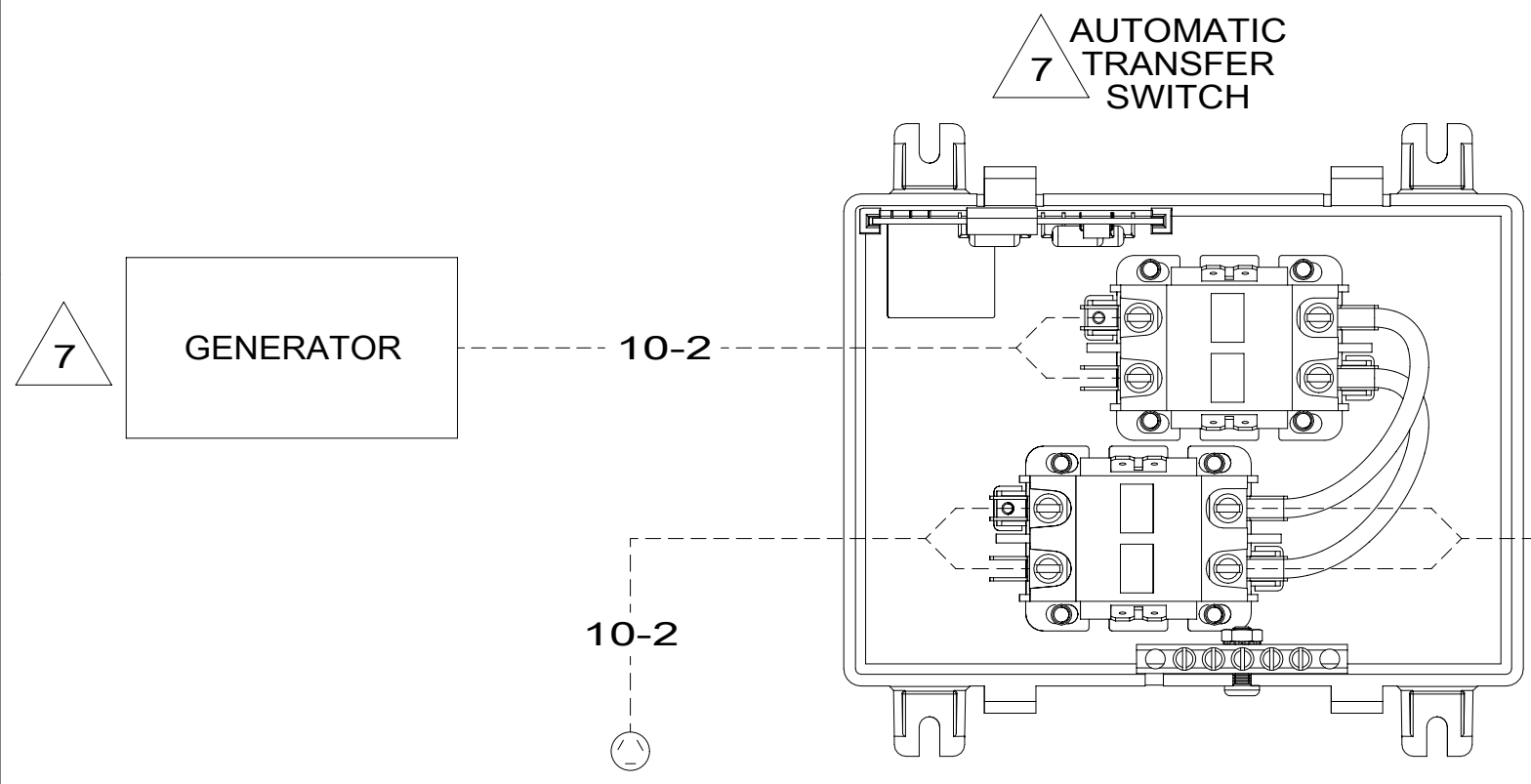
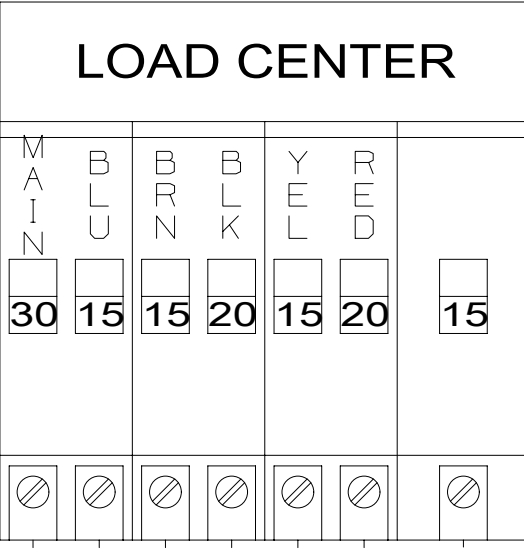
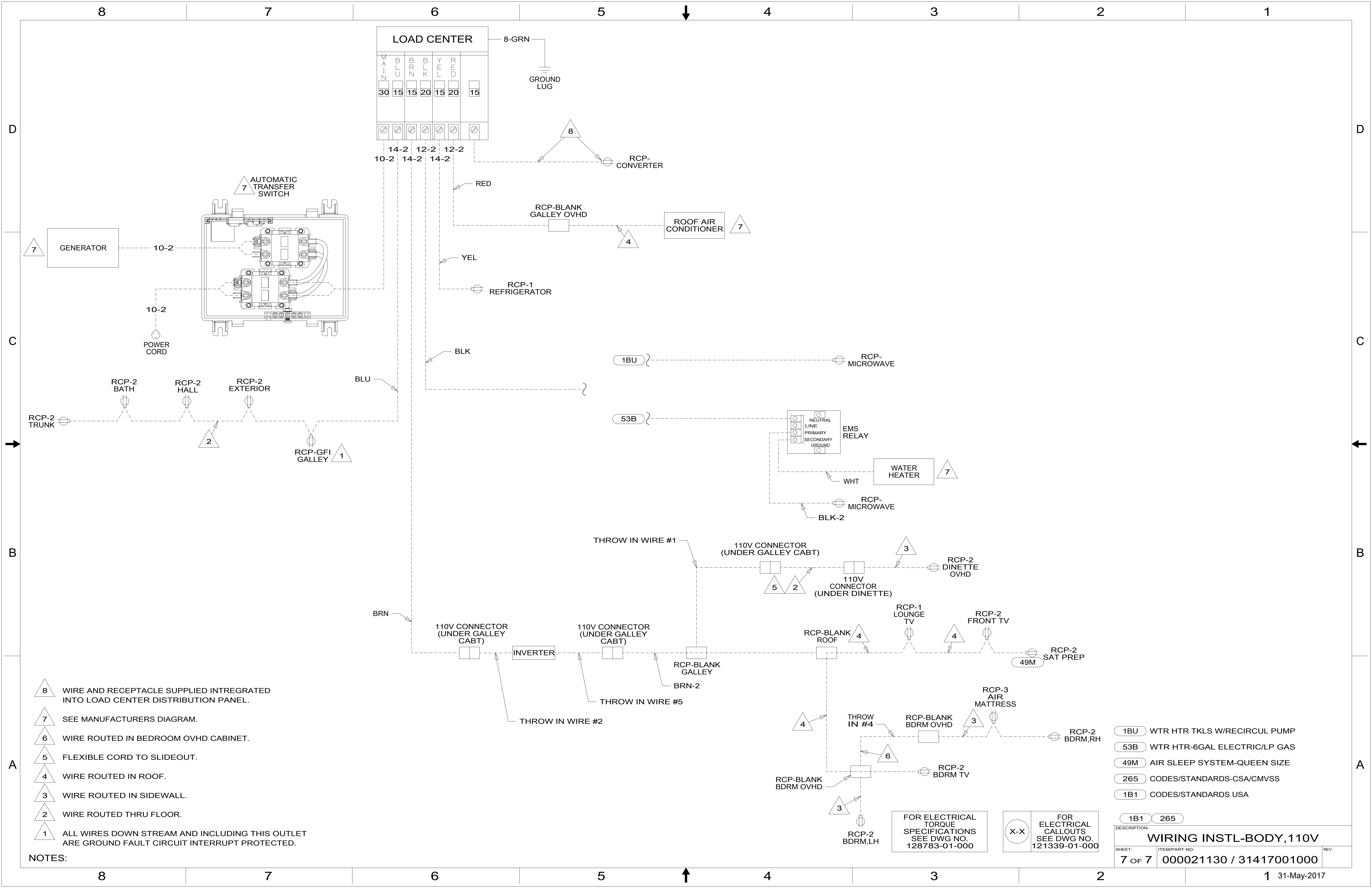
FOR ELECTRICAL TORQUE SPECIFICATIONS SEE DWG NO. 128783-01-000

FOR ELECTRICAL CALLOUTS SEE DWG NO. 121339-01-000

- (53B) WTR HTR-6GAL ELECTRIC/LP GAS
- (265) CODES/STANDARDS-CSA/CMVSS
- (1B1) CODES/STANDARDS USA

DESCRIPTION:	
WIRING INSTL-BODY, 110V	
SHEET:	ITEM/PART NO.:
6 OF 7	000021130 / 31417001000
REV	

8 7 6 5 4 3 2 1 31-May-2017



- NOTES:**
- 8 WIRE AND RECEPTACLE SUPPLIED INTREGATED INTO LOAD CENTER DISTRIBUTION PANEL.
 - 7 SEE MANUFACTURERS DIAGRAM.
 - 6 WIRE ROUTED IN BEDROOM OVHD CABINET.
 - 5 FLEXIBLE CORD TO SLIDEOUT.
 - 4 WIRE ROUTED IN ROOF.
 - 3 WIRE ROUTED IN SIDEWALL.
 - 2 WIRE ROUTED THRU FLOOR.
 - 1 ALL WIRES DOWN STREAM AND INCLUDING THIS OUTLET ARE GROUND FAULT CIRCUIT INTERRUPT PROTECTED.

- 1BU WTR HTR TKLS W/RECIRCUL PUMP
- 53B WTR HTR-6GAL ELECTRIC/LP GAS
- 49M AIR SLEEP SYSTEM-QUEEN SIZE
- 265 CODES/STANDARDS-CSA/CMVSS
- 1B1 CODES/STANDARDS USA

FOR ELECTRICAL TORQUE SPECIFICATIONS SEE DWG NO. 128783-01-000

FOR ELECTRICAL CALLOUTS SEE DWG NO. 121339-01-000

DESCRIPTION: WIRING INSTL-BODY, 110V		
SHEET: 7 OF 7	ITEM/PART NO: 000021130 / 31417001000	REV
		1 31-May-2017