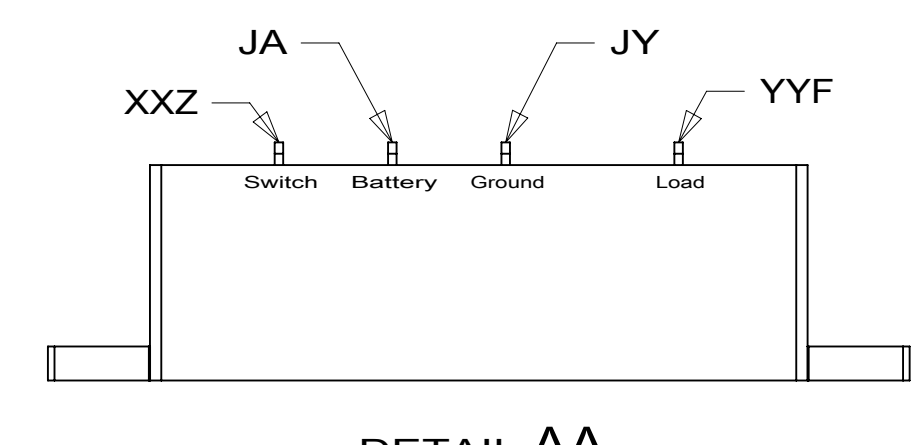
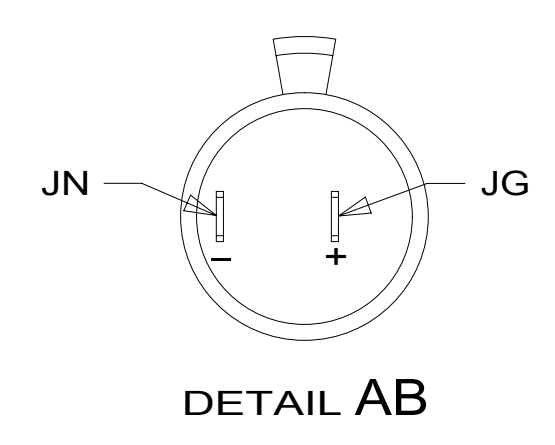


- 5 SPLICE YELLOW TO RED AND WHITE TO BLACK.
- 4 WIRE PART OF WIRE ASM-CHASSIS.
- 3 WIRES PASS THROUGH FLOOR IN THIS AREA.

2. ROUTE TANK SENSOR WIRES SO THEY DO NOT PASSOVER SENSORS. USE WIRE TIE MOUNT 155366-01-000 AND WIRE TIE 8343-01-000 AS NEEDED. TANK SURFACE MUST BE CLEANED USING ISOPROPYL ALCOHOL AND PRIME WITH PRIMER 94
1. AT MINIMUM ALL WIRES TO BE SUPPORTED AND SECURED PER CODE REQUIREMENTS. USE CLAMP 10495 OR 10497 OR WIRE TIE 8343 OR 108046 AND SCREW G67-XX-XXX OR G56-XX-XXX AS APPROPRIATE FOR INSTALLATION.

NOTES:



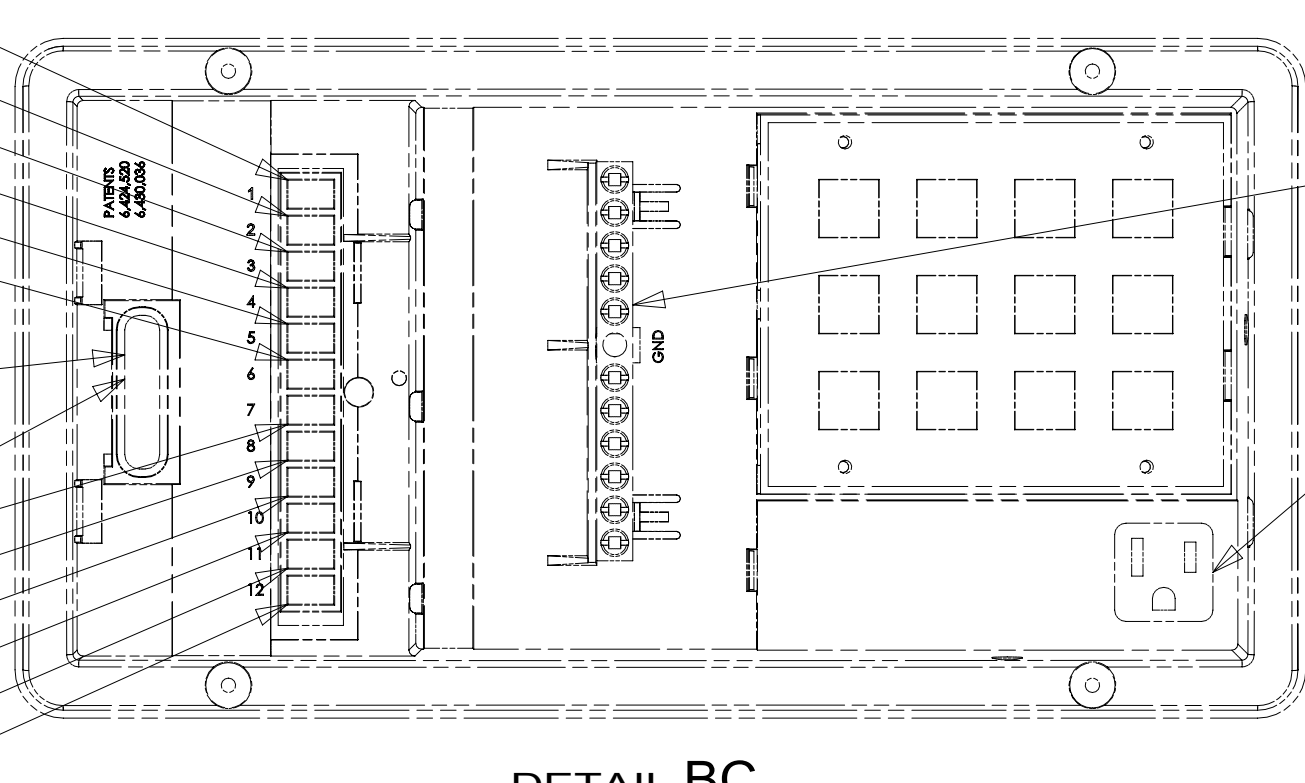
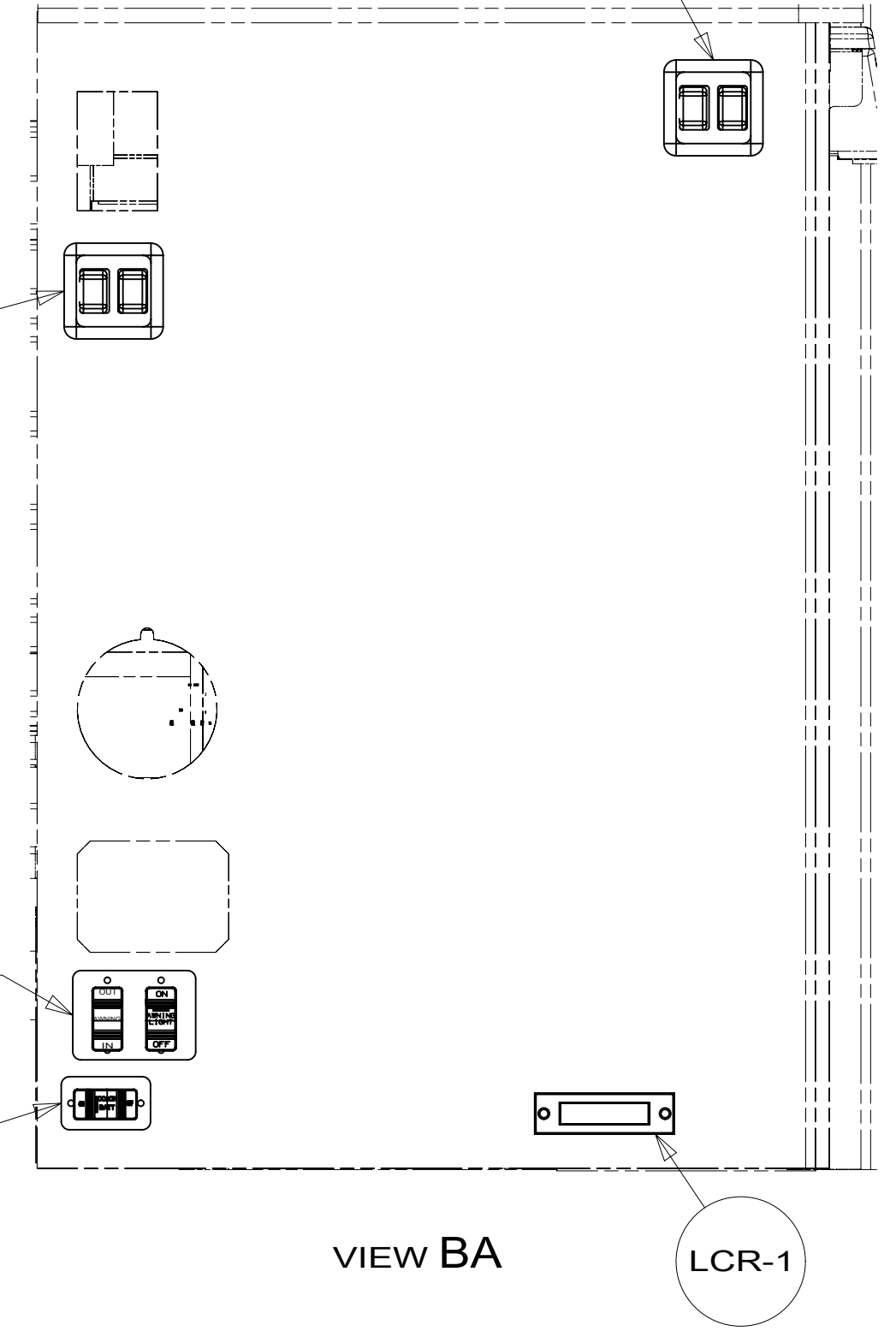
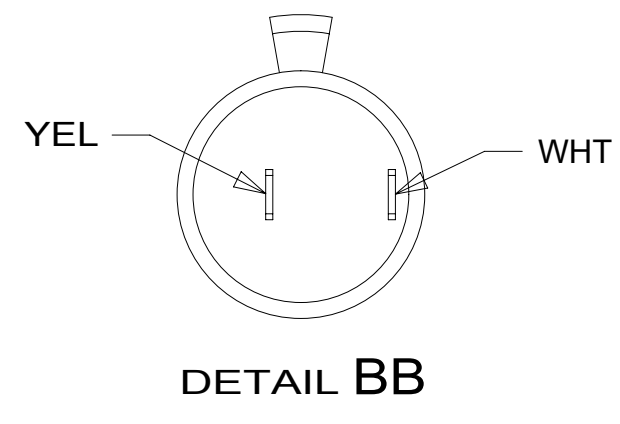
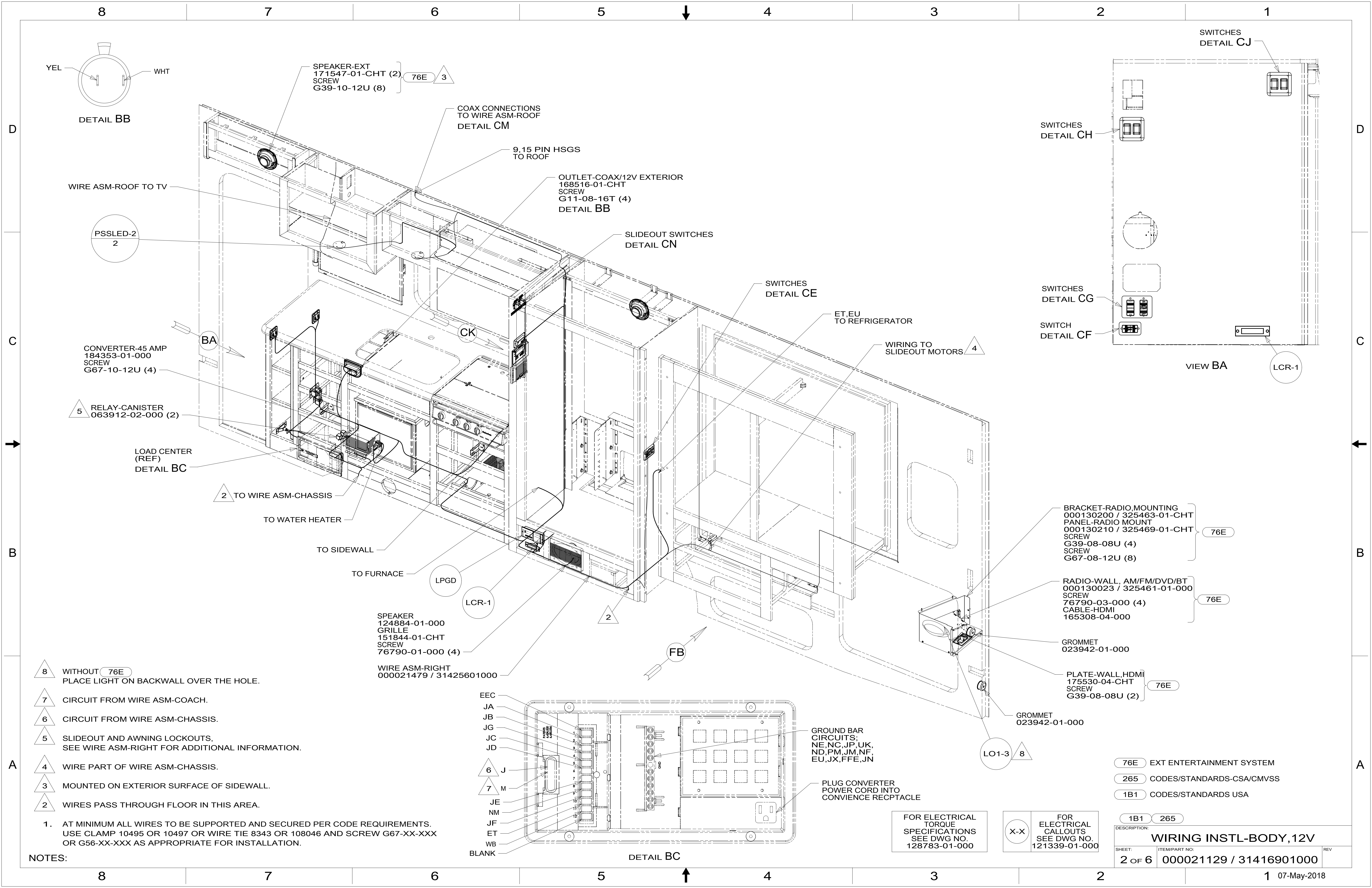
FOR ELECTRICAL TORQUE SPECIFICATIONS SEE DWG NO. 128783-01-000

FOR ELECTRICAL CALLOUTS SEE DWG NO. 121339-01-000

- 1BU WTR HTR TKLS W/RECIRCUL PUMP
- 282 SOLAR PANEL - 100 WATT
- 265 CODES/STANDARDS-CSA/CMVSS
- 1B1 CODES/STANDARDS USA

WINNEBAGO
COPYRIGHT 2016 WINNEBAGO INDUSTRIES, INC.

DSNR:	ALL DIMENSIONS ARE IN MILLIMETERS	
DIFFR:	MATERIAL:	
UNSPECIFIED TOLERANCES:	WEIGHT: (LBS)	FIRST USED:
WHOLE DIM (X) : 3		17 727K
ONE-PLACE (X.X) : 1.5		
TWO-PLACE (X.XX) : 0.50		
ANGLE : 1°		
REFER TO ES0018 FOR FASTENER TIGHTENING GUIDELINES		
DESCRIPTION:		
WIRING INSTL-BODY, 12V		
SHEET: 1 OF 6	ITEM/PART NO: 000021129 / 31416901000	REV:
REF:	1 07-May-2018	



- 8 WITHOUT 76E PLACE LIGHT ON BACKWALL OVER THE HOLE.
- 7 CIRCUIT FROM WIRE ASM-COACH.
- 6 CIRCUIT FROM WIRE ASM-CHASSIS.
- 5 SLIDEOUT AND AWNING LOCKOUTS. SEE WIRE ASM-RIGHT FOR ADDITIONAL INFORMATION.
- 4 WIRE PART OF WIRE ASM-CHASSIS.
- 3 MOUNTED ON EXTERIOR SURFACE OF SIDEWALL.
- 2 WIRES PASS THROUGH FLOOR IN THIS AREA.

NOTES:
 1. AT MINIMUM ALL WIRES TO BE SUPPORTED AND SECURED PER CODE REQUIREMENTS. USE CLAMP 10495 OR 10497 OR WIRE TIE 8343 OR 108046 AND SCREW G67-XX-XXX OR G56-XX-XXX AS APPROPRIATE FOR INSTALLATION.

SPEAKER
 124884-01-000
 GRILLE
 151844-01-CHT
 SCREW
 76790-01-000 (4)

GROUND BAR
 CIRCUITS:
 NE,NC,JP,UK,
 ND,PM,JM,NF,
 EU,JX,FFE,JN

PLUG CONVERTER
 POWER CORD INTO
 CONVENIENCE RECPTACLE

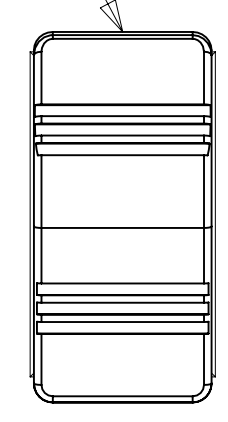
FOR ELECTRICAL
 TORQUE
 SPECIFICATIONS
 SEE DWG NO.
 128783-01-000

FOR ELECTRICAL
 CALLOUTS
 SEE DWG NO.
 121339-01-000

- 76E EXT ENTERTAINMENT SYSTEM
- 265 CODES/STANDARDS-CSA/CMVSS
- 1B1 CODES/STANDARDS USA

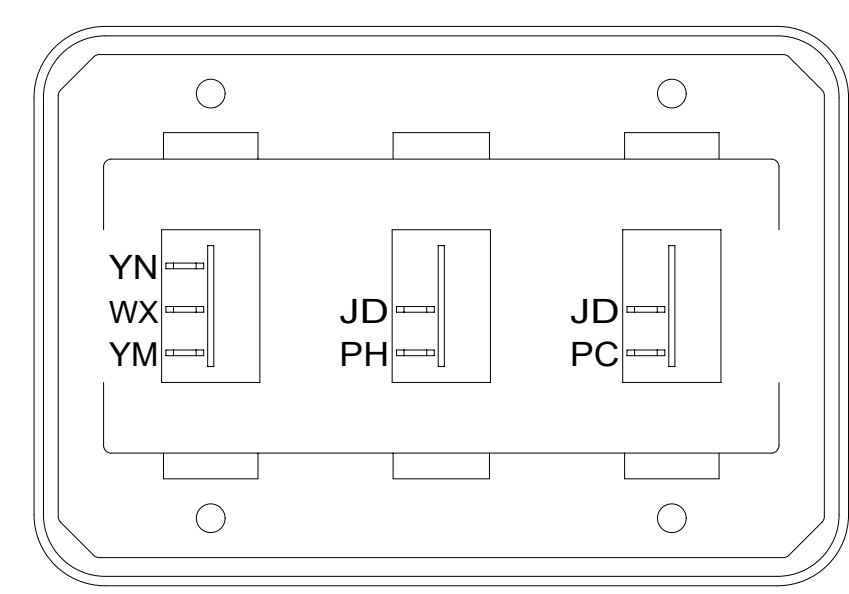
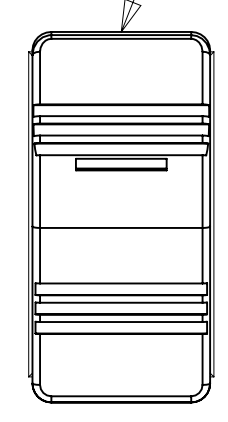
DESCRIPTION: WIRING INSTL-BODY, 12V		
SHEET: 2 OF 6	ITEM/PART NO: 000021129 / 31416901000	REV

SWITCH-DRAIN PUMP
108357-09-000
ACTUATOR
108356-01-CHT



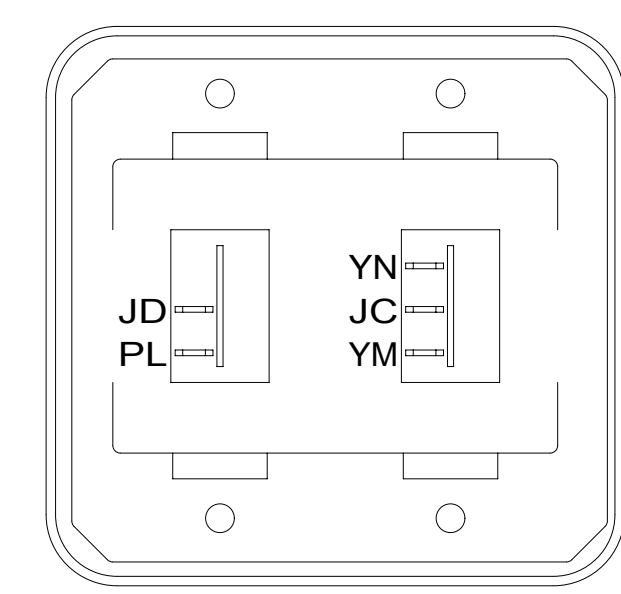
DETAIL CA

SWITCH-PUMP
108357-21-000
ACTUATOR
108356-03-CHT



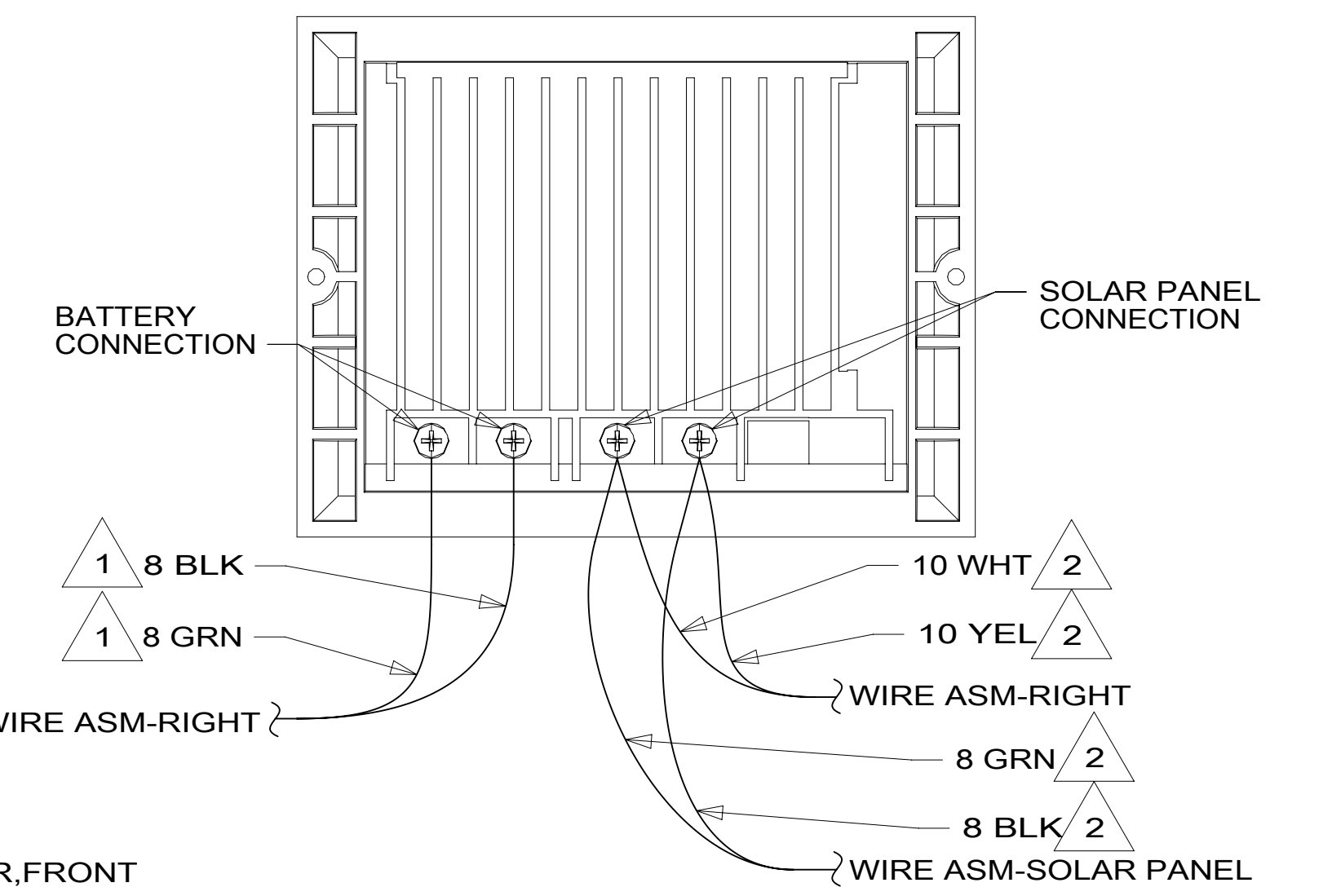
DETAIL CE

SWITCH-ROCKER
135740-01-CHT (2)
135740-02-CHT
SWITCH-BASE
135741-03-CHT
SWITCH-BEZEL
135742-03-CHT
SCREW
G11-08-08U (4)

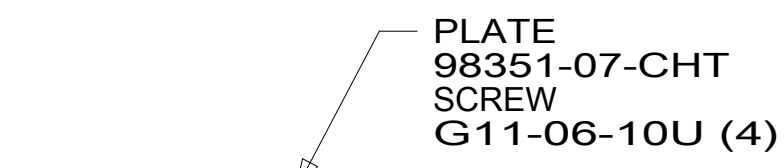


DETAIL CJ

SWITCH-ROCKER
135740-01-CHT
135740-02-CHT
SWITCH-BASE
135741-02-CHT
SWITCH-BEZEL
135742-02-CHT
SCREW
G11-08-08U (4)



DETAIL CL 282
(BACK VIEW OF COMPONENT)



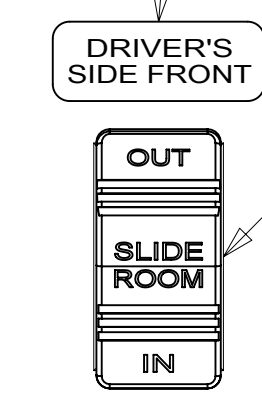
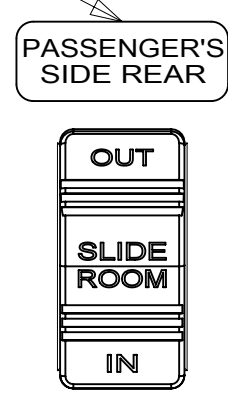
DETAIL CF

PLATE
98351-07-CHT
SCREW
G11-06-10U (4)

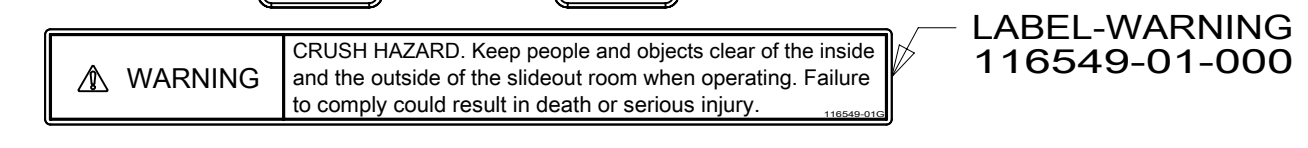
SWITCH-BATTERY
108357-18-000
ACTUATOR
108356-19-CHT
CIRCUITS LH,LJ,
LG,JP,JA
WIRE ASM-THERMISTOR
186796-01-000

LABEL-SLIDEOUT,PASS,REAR
163992-03-CHT

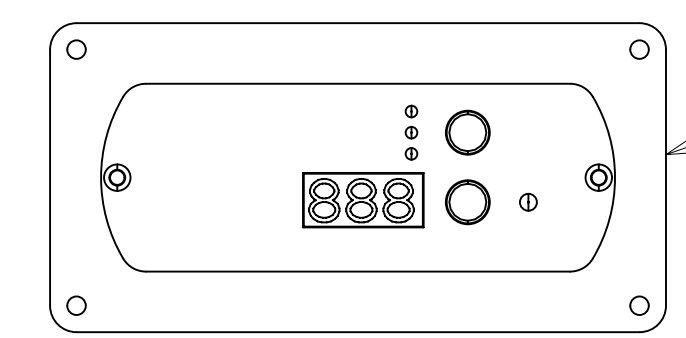
LABEL-SLIDEOUT,DRIVER,FRONT
163992-01-CHT



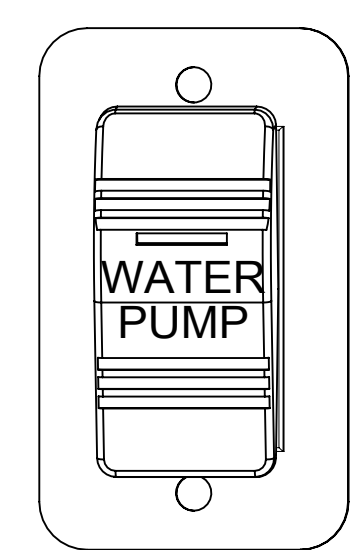
SWITCH
108357-07-000 (2)
ACTUATOR
108356-24-CHT (2)



VIEW CN

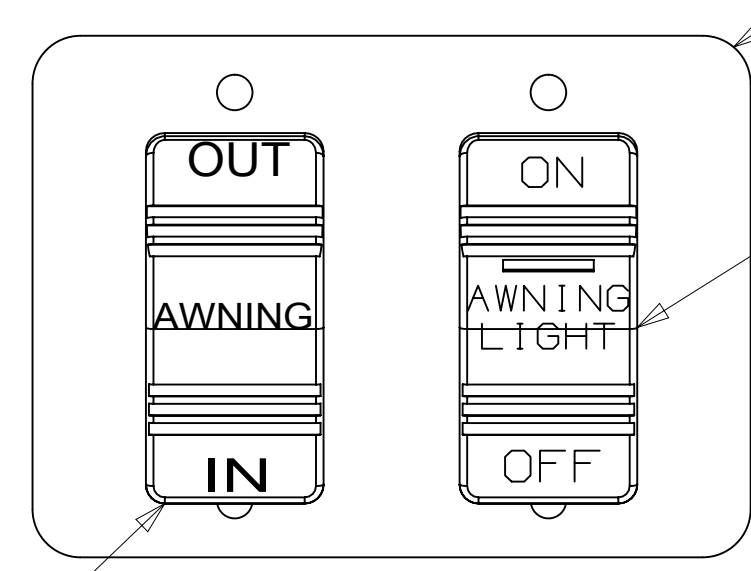


REMOTE PANEL-INVERTER
(SUPPLIED WITH INVERTER)
MODULE-12V DISC
173355-01-000



DETAIL CC

SWITCH-PUMP
108357-21-000
ACTUATOR
108356-23-CHT
PLATE
098351-07-CHT
SCREW
G11-06-10U (2)

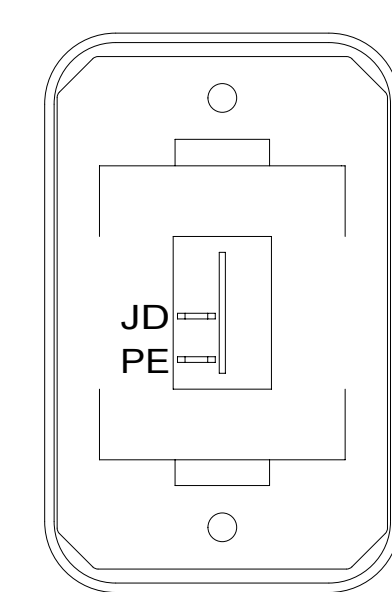


DETAIL CG

PLATE-SWITCH
158431-17-CHT
SCREW
G11-06-10U (4)

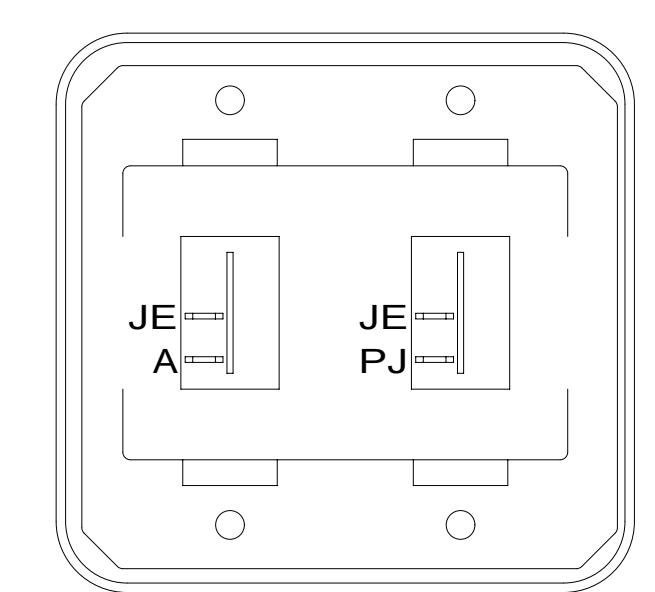
SWITCH-ROCKER
108357-14-000
ACTUATOR-SWITCH
108356-28-CHT

SWITCH-ROCKER
108357-06-000
ACTUATOR-SWITCH
108356-12-CHT



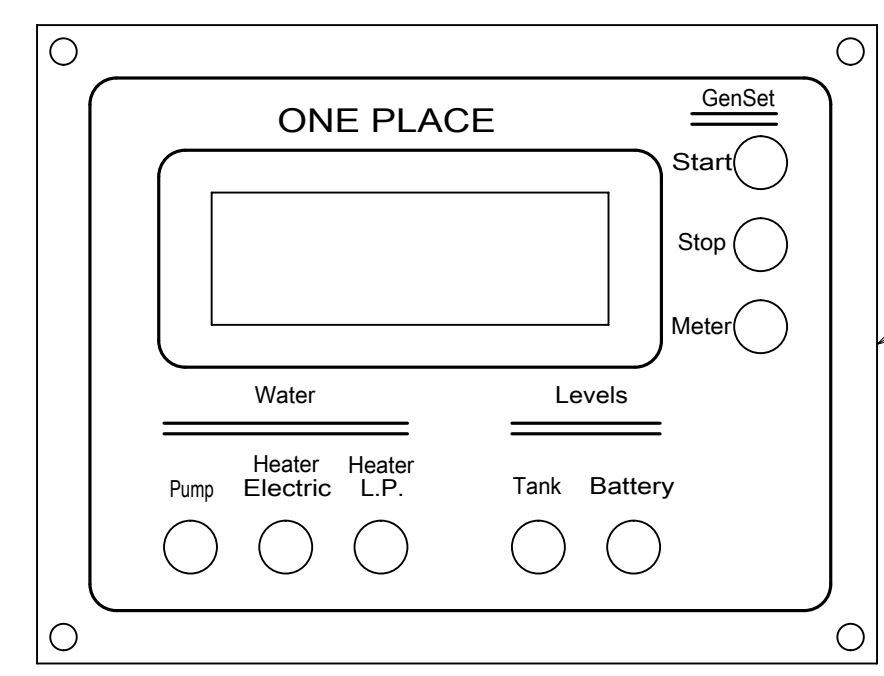
DETAIL CD

SWITCH-ROCKER
135740-01-CHT
SWITCH-BASE
135741-01-CHT
SWITCH-BEZEL
135742-01-CHT
SCREW
G11-08-08U (2)



DETAIL CH

SWITCH-ROCKER
135740-01-CHT (2)
SWITCH-BASE
135741-02-CHT
SWITCH-BEZEL
135742-02-CHT
SCREW
G11-08-08U (4)

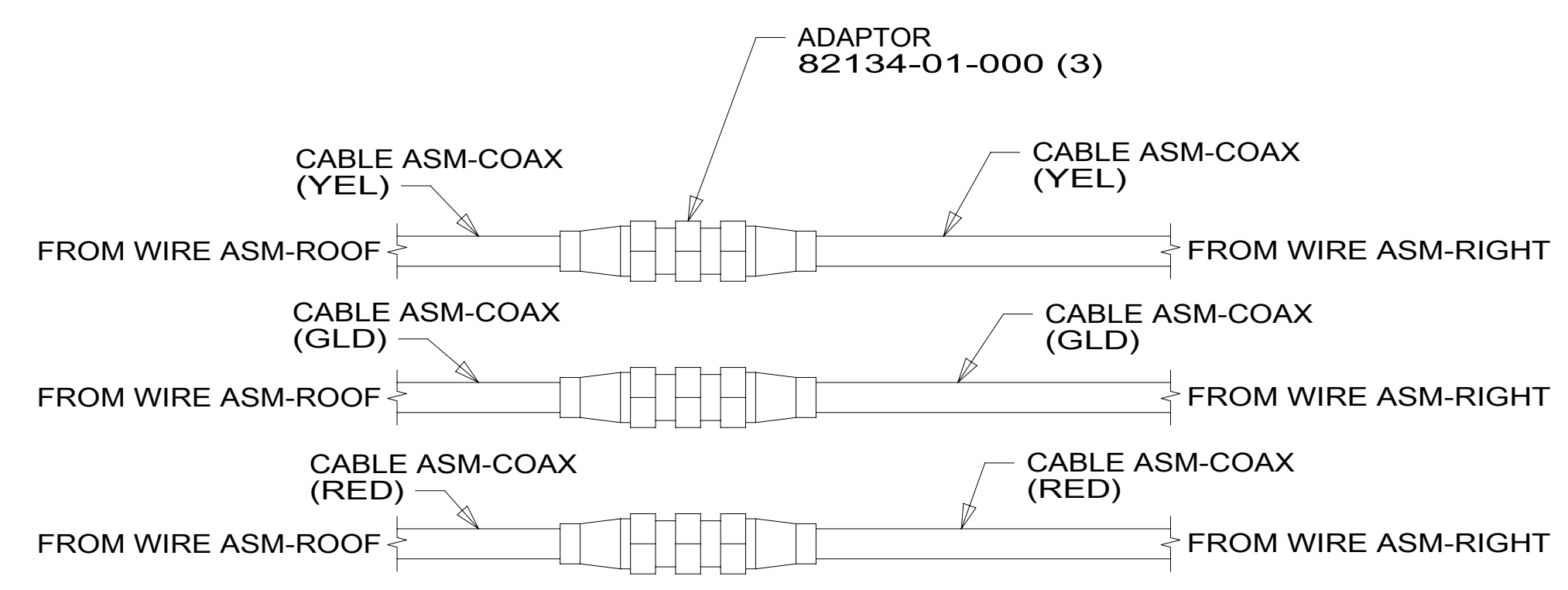


PANEL-MONITOR,LCD
175724-01-000
175724-06-000
SCREW
G11-08-12U (4)



CONTROL-CHARGE,
SOLAR 30 AMP
191278-01-000
SCREW
G11-08-08U (2)
DETAIL CL

VIEW CK



DETAIL CM

NOTES:
2 WIRE IS MARKED WITH YELLOW TAPE.
1 WIRE IS MARKED WITH GOLD TAPE.

FOR ELECTRICAL
TORQUE
SPECIFICATIONS
SEE DWG NO.
128783-01-000

FOR ELECTRICAL
CALLOUTS
SEE DWG NO.
121339-01-000

- 282 SOLAR PANEL - 100 WATT
- 53B WTR HTR-6GAL ELECTRIC/LP GAS
- 1BU WTR HTR TKLS W/RECIRCUL PUMP
- 265 CODES/STANDARDS-CSA/CMVSS
- 1B1 CODES/STANDARDS USA

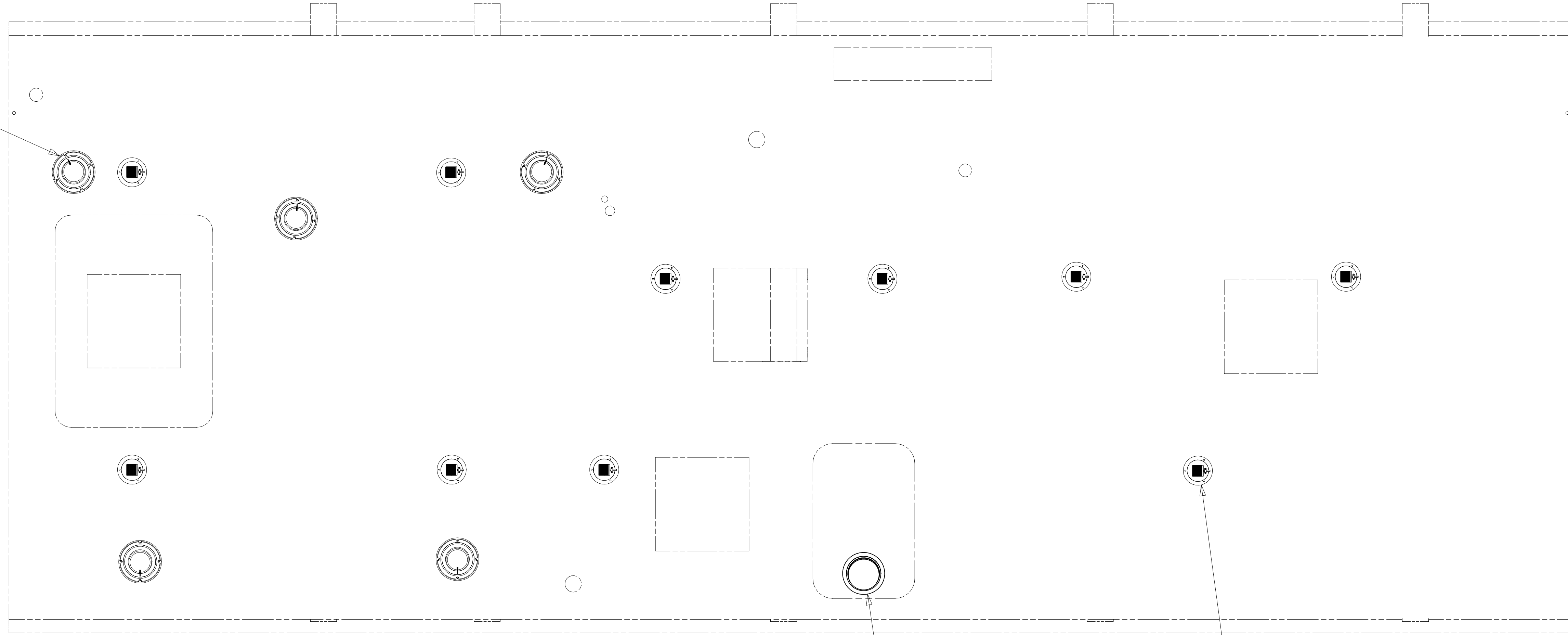
DESCRIPTION: WIRING INSTL-BODY, 12V		
SHEET: 3 OF 6	ITEM/PART NO: 000021129 / 31416901000	REV
1 07-May-2018		

8 7 6 5 4 3 2 1

D
C
B
A

D
C
B
A

SPEAKER-ROUND, CEILING
179783-01-CHT (5)
SCREW
G1208-12-170 (20)



FOR ELECTRICAL
TORQUE
SPECIFICATIONS
SEE DWG NO.
128783-01-000

X-X

FOR
ELECTRICAL
CALLOUTS
SEE DWG NO.
121339-01-000

265 CODES/STANDARDS-CSA/CMVSS
1B1 CODES/STANDARDS USA

DESCRIPTION: WIRING INSTL-BODY, 12V	
SHEET: 4 OF 6	ITEM/PART NO: 000021129 / 31416901000
REV 1 07-May-2018	

THE SATELLITE DISH WIRE CONNECTIONS ARE TO BE PLACED ON THE CENTERLINE OF THE MOTORHOME FACING FORWARD

ANTENNA-SATELLITE, STATIONARY
 000017113 / 313336-01-CHT
 SCREW
 000G39-08-08U (9)
 CABLE ASM-COAX
 163598-04-000
 ADAPTER
 082134-01-000
 CONDUIT
 041953-06-000 (200 MM)
 SCREW
 000G67-10-12U (10)
 (FOR PLATE SUPPLIED W/ DISH)
 DETAIL EA

78K

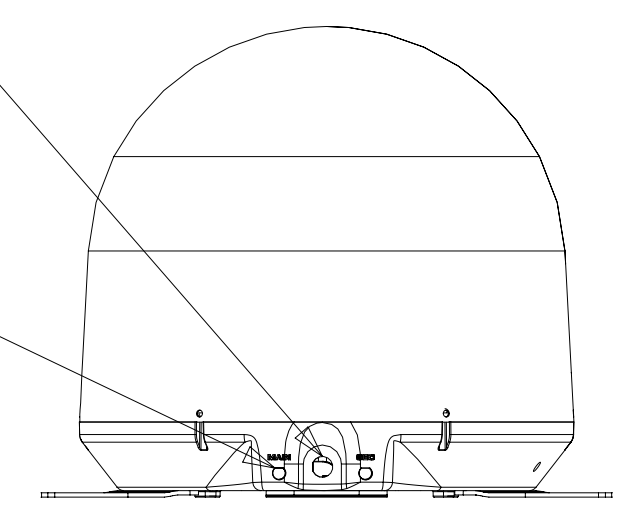
DETAIL EA 1 78K

ANTENNA-TV ROOF
 000039180 / 318992-01-CHT
 SCREW
 G67-10-12U (6)

2

CONNECT 2-PIN HOUSING FROM ROOF ASM TO SATELLITE DISH HERE AND ADD CONVULUTED TUBING

CONNECT CABLE ASM COAX (ORG) FROM ROOF ASM TO MAIN INPUT ON SATELLITE DISH



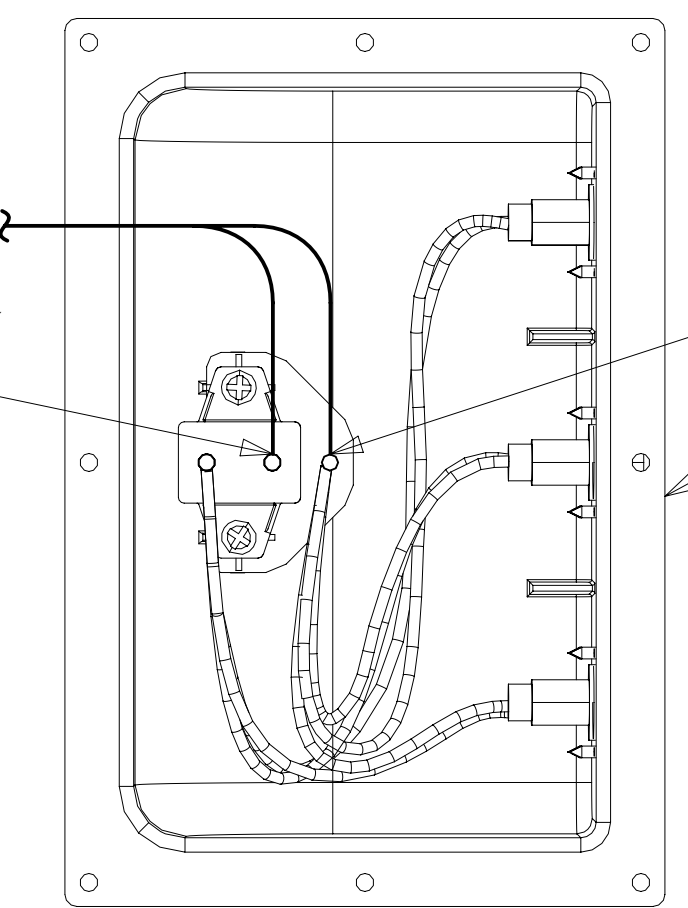
VIEW EB-EB 78K

PANEL-SOLAR
 191276-01-CHT
 MOUNTING FEET-SOLAR, QTY 4
 000031418 / 316962-01-000
 SCREW
 G39-10-10U (8)

282

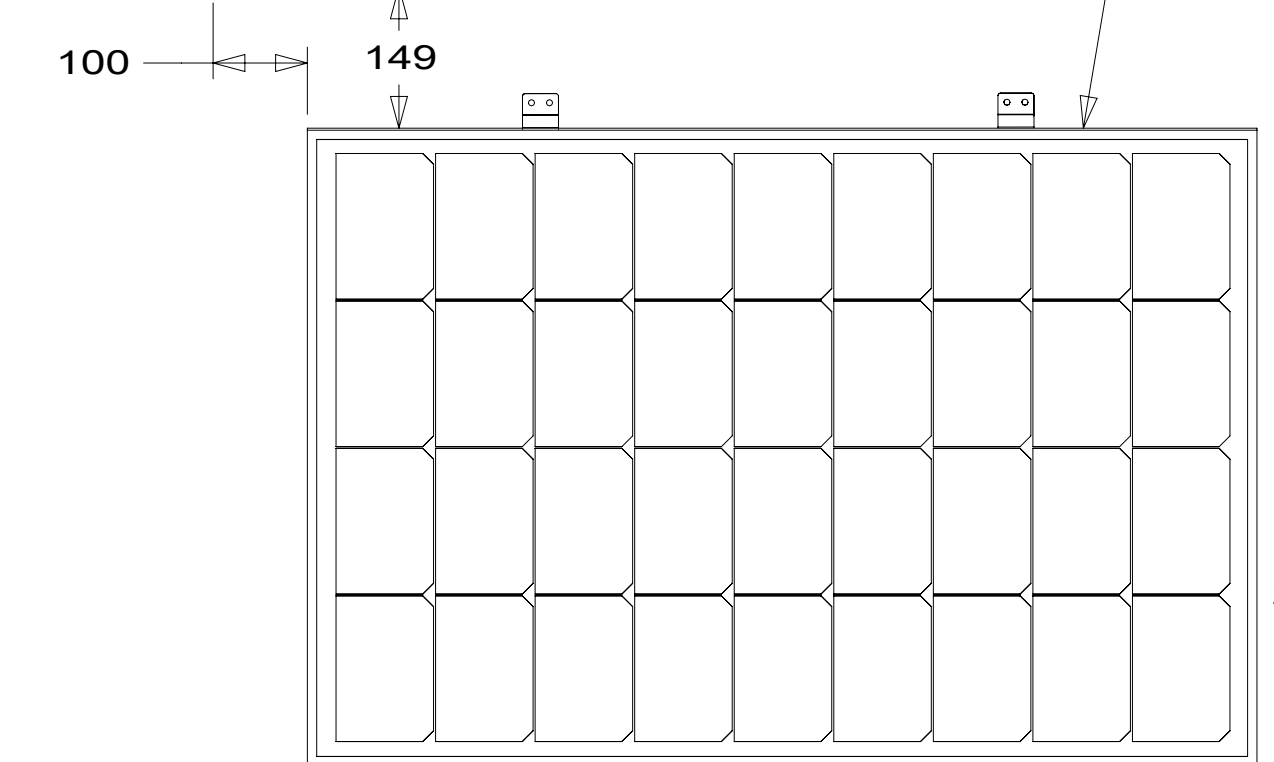
WIRE ASM-SOLAR PANEL
 8 BLK TO EMPTY POST ON 30A BREAKER

8 GRN TO GROUND STUD (STACK GROUND WIRES)
 PORT-SOLAR (REF)



DETAIL ED 282

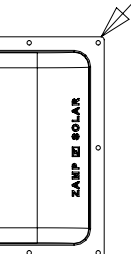
BDRM VENT (REF)



DETAIL EC

PORT-SOLAR, 3 POSITION
 191277-01-CHT
 DETAIL ED

282



REFRIGERATOR VENT (REF)

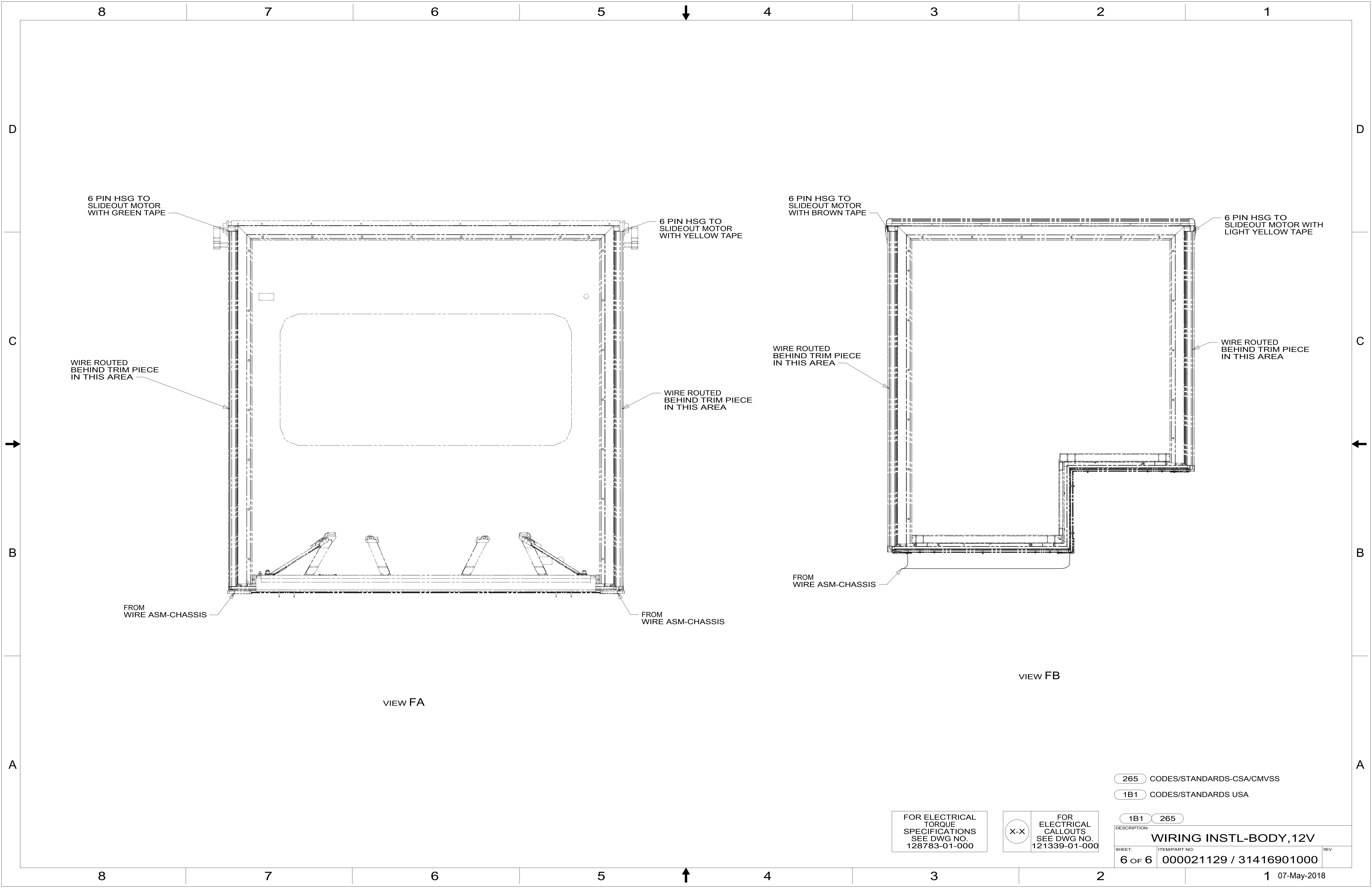
FOR ELECTRICAL TORQUE SPECIFICATIONS SEE DWG NO. 128783-01-000

FOR ELECTRICAL CALLOUTS SEE DWG NO. 121339-01-000

- NOTES:
- 2 SEE ANTENNA INSTALLATION MANUAL FOR CORRECT INSTALLATION PROCEDURE.
 - 1 REMOVE ALL SHIPPING RESTRAINTS AND FIRMLY INSERT THE SUPPLIED PLUGS INTO THE APPROPRIATE SIZED HOLES AS SPECIFIED IN THE INSTALLATION PROCESS.

- 282 SOLAR PANEL - 100 WATT
- 78K SATELLITE TV SYSTEM AUTO
- 265 CODES/STANDARDS-CSA/CMVSS
- 1B1 CODES/STANDARDS USA

DESCRIPTION: WIRING INSTL-BODY, 12V		
SHEET: 5 OF 6	ITEM/PART NO.: 000021129 / 31416901000	REV



6 PIN HSG TO SLIDEOUT MOTOR WITH GREEN TAPE

6 PIN HSG TO SLIDEOUT MOTOR WITH YELLOW TAPE

6 PIN HSG TO SLIDEOUT MOTOR WITH BROWN TAPE

6 PIN HSG TO SLIDEOUT MOTOR WITH LIGHT YELLOW TAPE

WIRE ROUTED BEHIND TRIM PIECE IN THIS AREA

WIRE ROUTED BEHIND TRIM PIECE IN THIS AREA

WIRE ROUTED BEHIND TRIM PIECE IN THIS AREA

WIRE ROUTED BEHIND TRIM PIECE IN THIS AREA

FROM WIRE ASM-CHASSIS

FROM WIRE ASM-CHASSIS

FROM WIRE ASM-CHASSIS

VIEW FA

VIEW FB

265 CODES/STANDARDS-CSA/CMVSS

1B1 CODES/STANDARDS USA

1B1 265

FOR ELECTRICAL TORQUE SPECIFICATIONS SEE DWG NO. 128783-01-000

FOR ELECTRICAL CALLOUTS SEE DWG NO. 121339-01-000

DESCRIPTION: WIRING INSTL-BODY, 12V

SHEET: 6 OF 6 ITEM/PART NO: 000021129 / 31416901000 REV