

DY (BUTT SPLICE TO CHASSIS WIRING)

WIRE ASM CHASSIS

FORD WIRING

DY (BUTT SPLICE TO CHASSIS WIRING) DETAIL AB

WIRE TO PARK BRAKE SWITCH

SWITCH ASM-PARKING BRAKE

DETAIL AA

3
CIRCUIT KE TO WIRE ASM-ADAPTOR, FORD 00022154 / 31439701000 FUSE-5 AMP 062901-02-000

DRIVER'S SEAT WIRING DETAIL CF

WIRE ASM-CHASSIS CONNECTS TO FORD WIRES IN THIS AREA

TO FRONT SLIDEOUT MOTOR (YEL)

TO GENERATOR

WIRE ASM-CHASSIS 00021515 / 31425901000

DATA CABLE TO TANKLESS WATER HEATER CONTROL

TO LP TANK SENSOR

TO REAR SLIDEOUT MOTOR (GRN)

4
19R → CABLE-CAMERA,20M 183822-02-000
15D → CABLE-CAMERA,REAR 180731-02-000

TO WIRE ASM-LEFT

TO FORD WIRING CONNECTIONS

5

TO WIRE ASM-TAIL LAMPS

TO TRAILER HITCH ASSEMBLY

6
CUT LIGHT GREEN/RED WIRE FROM PARK BRAKE SWITCH AND RECONNECT TO CIRCUIT DY OF CHASSIS ASM AS SHOWN.

5
COIL EXCESS CAMERA CABLE HERE FOR TRANSPORTATION PURPOSES.

4
ROUTE WITH WIRE ASM-CHASSIS.

3
LOCATED UNDER DASH BY STEERING COLUMN.

2. SECURE WIRE ASM AND CABLES WITH WIRE TIE 8343-01-000 OR 116673-01-000 AT NO MORE THAN 600MM CENTER ALONG ENTIRE ROUTED PATH.

1. SECURE CONDUIT 41953, TAB AS REQUIRED, OVER ALL WIRES IN CONTACT WITH SHARP EDGES.

NOTES:

DY TO PARK BRAKE DETAIL AA

MD TO POWER MIRROR WIRE ASM

300 DROP FEED,BC TO LEVELING JACKS LAMP DETAIL CB

12 PIN HSGS (2) TO BATTERY DISCONNECT SWITCH AND RADIO POWER SWITCH DETAIL CA

TO RADIO WIRING 2,3,4 PIN HSGS CAMERA CABLE ROUND MALE END 19R 6-PIN HSG 15D

ROUTE STARTER CABLE WITH EXISTING FORD WIRE ASM TO CHASSIS STARTER SOLENOID

PASSENGER'S SEAT WIRING DETAIL CG

CHASSIS ELECTRICAL BOX ASM

TO WIRE ASM-RIGHT

TO BEDROOM SLIDEOUT MOTOR

TO EXTERIOR ENTERTAINMENT CENTER AND/OR COMPARTMENT LIGHT

CHASSIS WIRING

CIRCUIT DY

LIGHT GREEN/RED

FORD WIRING

BLACK

LIGHT GREEN/RED

PARK BRAKE SWITCH

DETAIL AB 6

FOR ELECTRICAL TORQUE SPECIFICATIONS SEE DWG NO. 128783-01-000

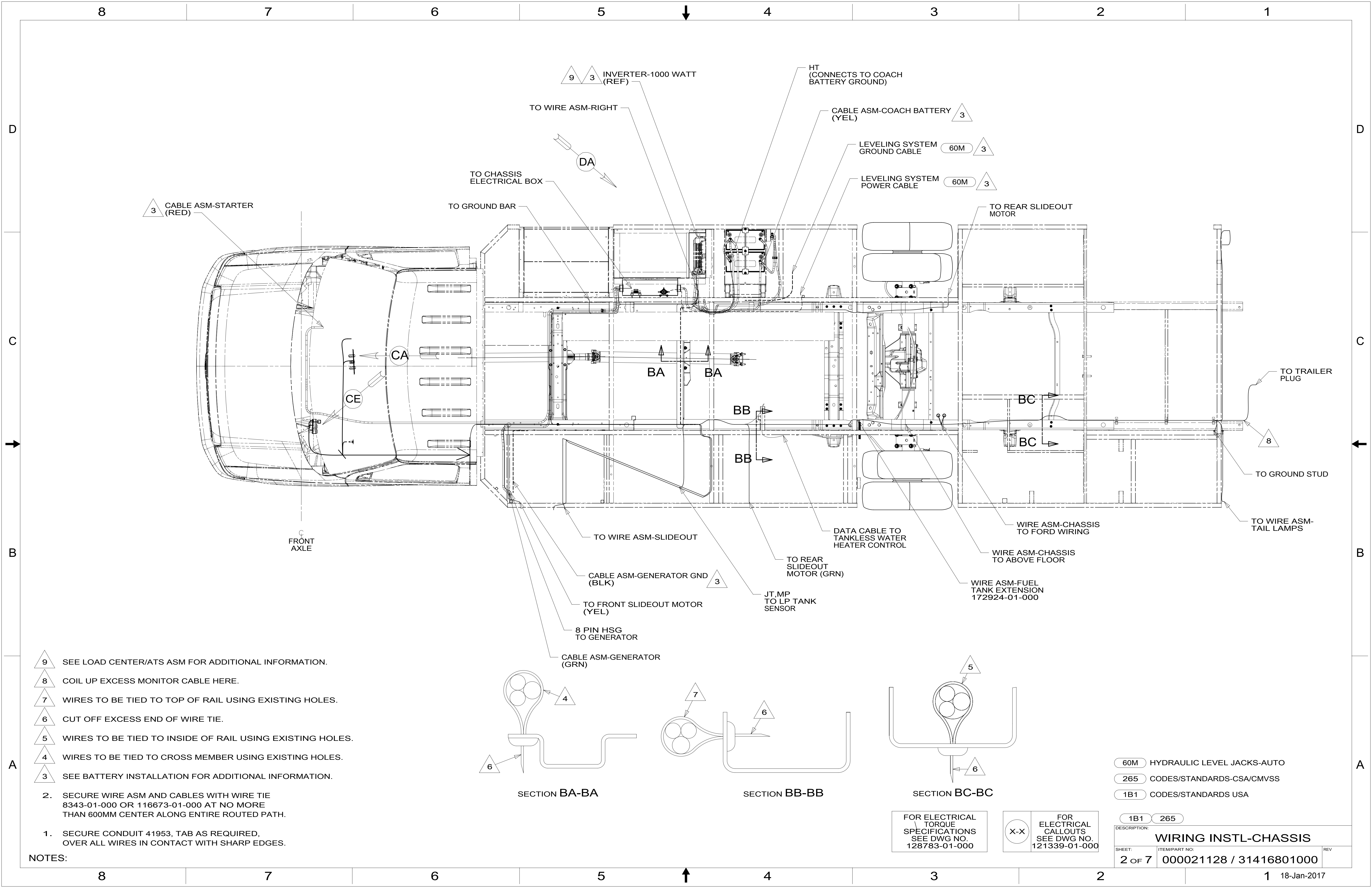
FOR ELECTRICAL CALLOUTS SEE DWG NO. 121339-01-000

- 15D INFOTAINMENT CENTER/GPS
- 19R RADIO/REARVIEW MONITOR SYS
- 60M HYDRAULIC LEVEL JACKS-AUTO
- 265 CODES/STANDARDS-CSA/CMVSS
- 1B1 CODES/STANDARDS USA

- 1B1 265



DSNR:		ALL DIMENSIONS ARE IN MILLIMETERS	
DIFFR:		MATERIAL:	
UNSPECIFIED TOLERANCES:			
WHOLE DIM (X)	: 3		
ONE-PLACE (X.X)	: 1.5		
TWO-PLACE (X.XX)	: 0.50		
ANGLE	: 1°		
REFER TO ES0018 FOR FASTENER TIGHTENING GUIDELINES		WEIGHT: (LBS)	FIRST USED:
			17 727K
DESCRIPTION:			
WIRING INSTL-CHASSIS			
SHEET:	ITEM/PART NO.:	REV:	
1 OF 7	00021128 / 31416801000		
REF:		1 18-Jan-2017	



3 CABLE ASM-STARTER (RED)

9 3 INVERTER-1000 WATT (REF)

HT (CONNECTS TO COACH BATTERY GROUND)

CABLE ASM-COACH BATTERY (YEL) 3

LEVELING SYSTEM GROUND CABLE 60M 3

LEVELING SYSTEM POWER CABLE 60M 3

TO REAR SLIDEOUT MOTOR

TO CHASSIS ELECTRICAL BOX

TO WIRE ASM-RIGHT

TO GROUND BAR

FRONT AXLE

CA

CE

BA

BA

BB

BB

BC

BC

TO TRAILER PLUG

TO GROUND STUD

TO WIRE ASM-TAIL LAMPS

TO WIRE ASM-SLIDEOUT

DATA CABLE TO TANKLESS WATER HEATER CONTROL

WIRE ASM-CHASSIS TO FORD WIRING

WIRE ASM-CHASSIS TO ABOVE FLOOR

WIRE ASM-FUEL TANK EXTENSION 172924-01-000

TO REAR SLIDEOUT MOTOR (GRN)

JT,MP TO LP TANK SENSOR

CABLE ASM-GENERATOR GND (BLK) 3

TO FRONT SLIDEOUT MOTOR (YEL)

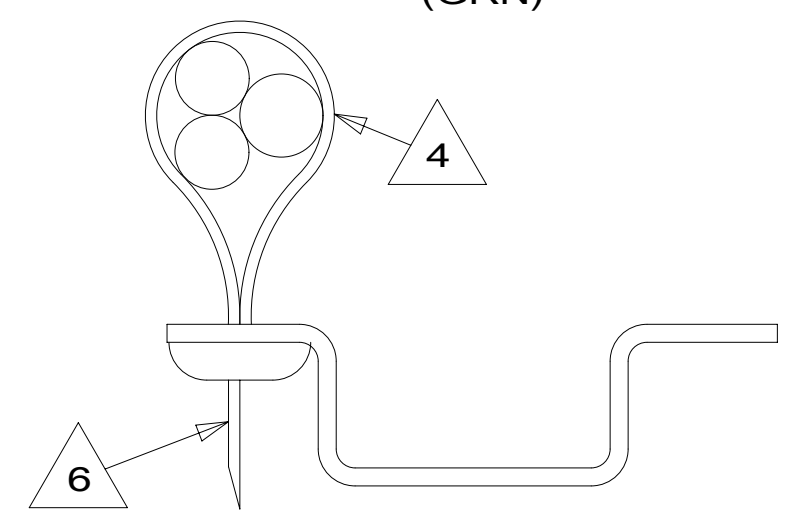
8 PIN HSG TO GENERATOR

CABLE ASM-GENERATOR (GRN)

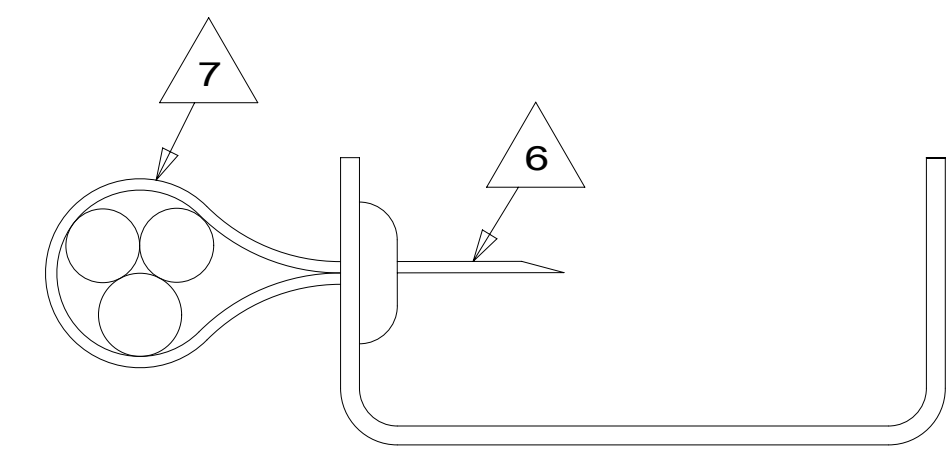
- 9 SEE LOAD CENTER/ATS ASM FOR ADDITIONAL INFORMATION.
- 8 COIL UP EXCESS MONITOR CABLE HERE.
- 7 WIRES TO BE TIED TO TOP OF RAIL USING EXISTING HOLES.
- 6 CUT OFF EXCESS END OF WIRE TIE.
- 5 WIRES TO BE TIED TO INSIDE OF RAIL USING EXISTING HOLES.
- 4 WIRES TO BE TIED TO CROSS MEMBER USING EXISTING HOLES.
- 3 SEE BATTERY INSTALLATION FOR ADDITIONAL INFORMATION.

2. SECURE WIRE ASM AND CABLES WITH WIRE TIE 8343-01-000 OR 116673-01-000 AT NO MORE THAN 600MM CENTER ALONG ENTIRE ROUTED PATH.
1. SECURE CONDUIT 41953, TAB AS REQUIRED, OVER ALL WIRES IN CONTACT WITH SHARP EDGES.

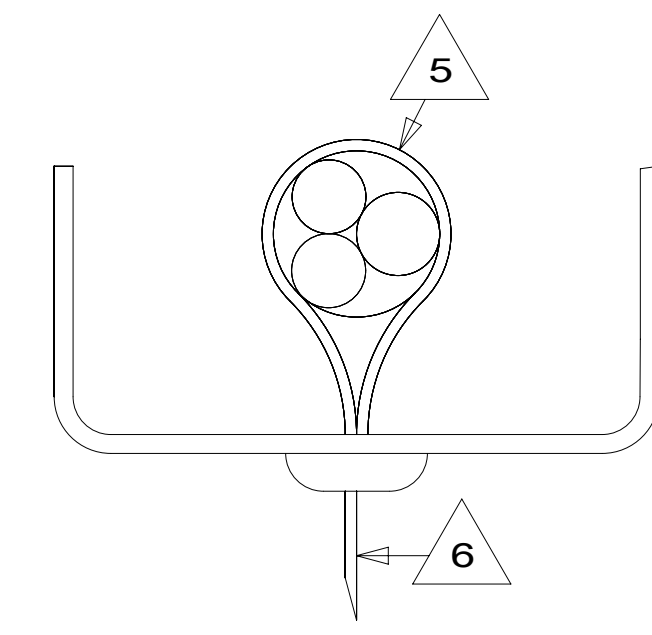
NOTES:



SECTION BA-BA



SECTION BB-BB



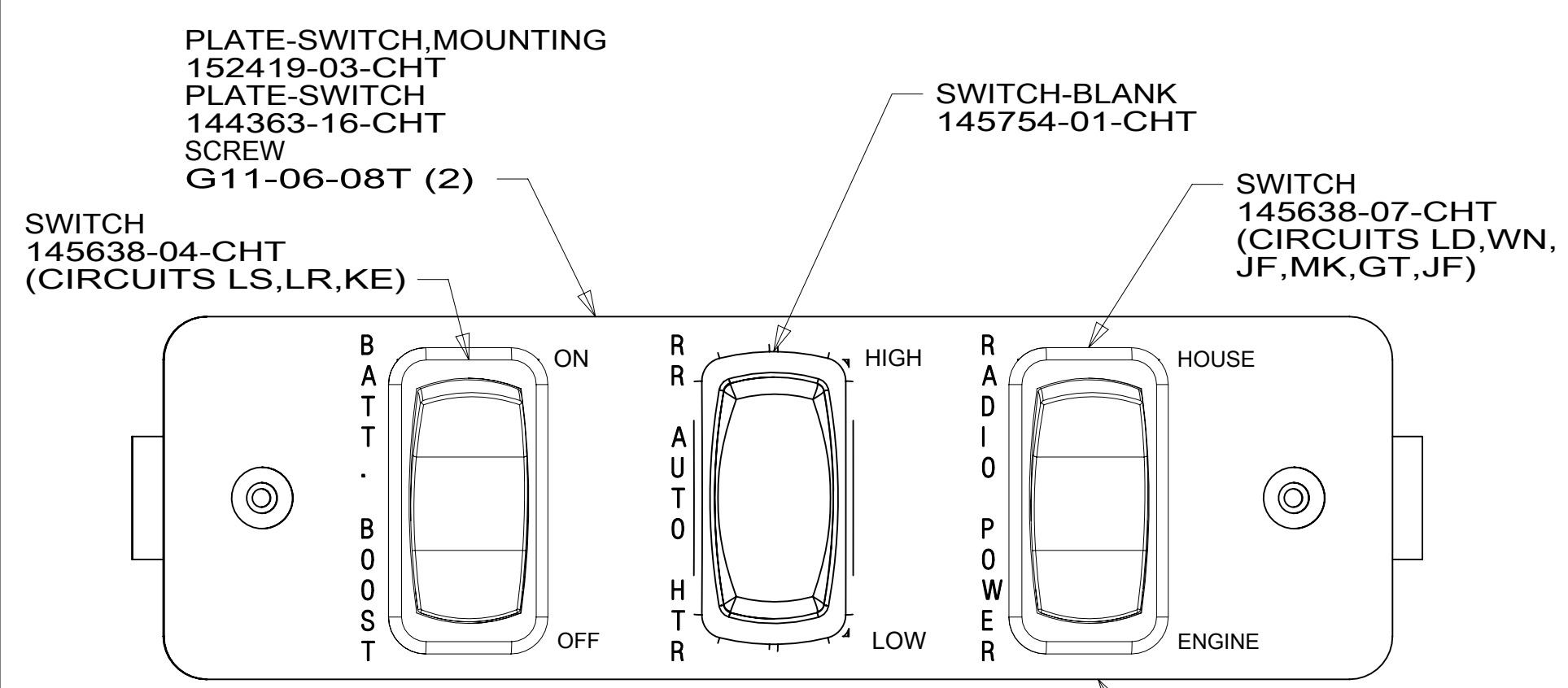
SECTION BC-BC

- 60M HYDRAULIC LEVEL JACKS-AUTO
- 265 CODES/STANDARDS-CSA/CMVSS
- 1B1 CODES/STANDARDS USA

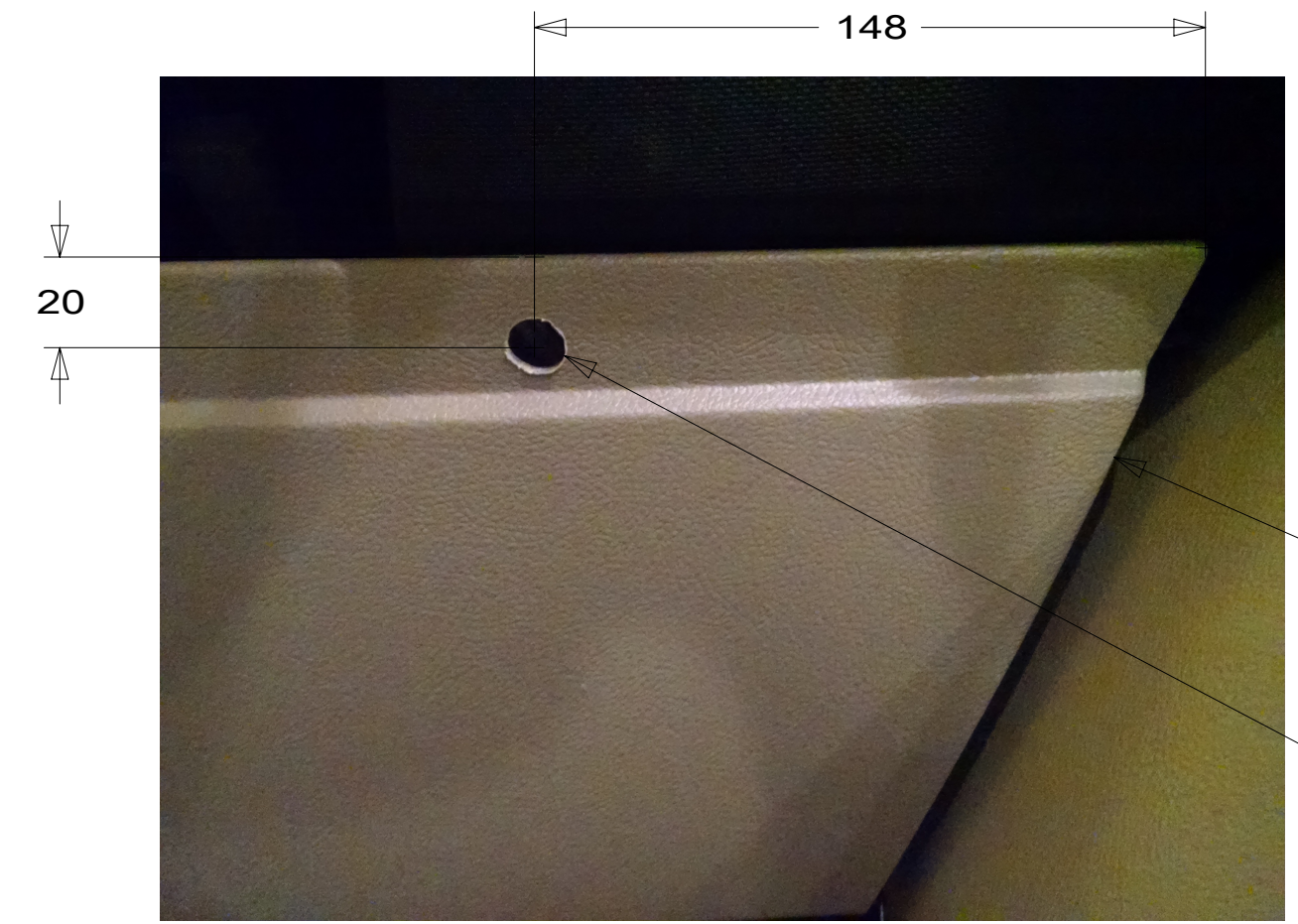
FOR ELECTRICAL TORQUE SPECIFICATIONS SEE DWG NO. 128783-01-000

FOR ELECTRICAL CALLOUTS SEE DWG NO. 121339-01-000

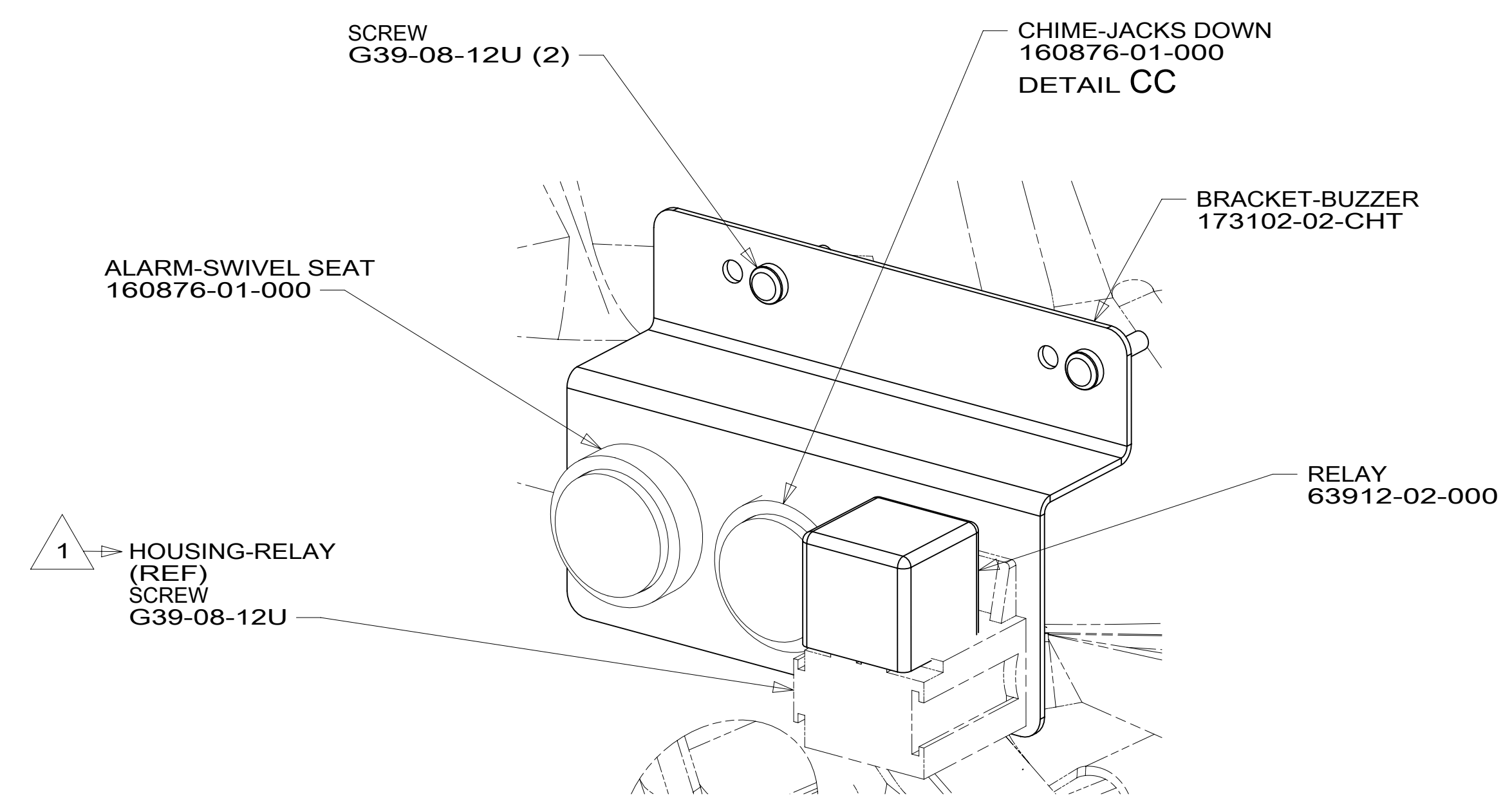
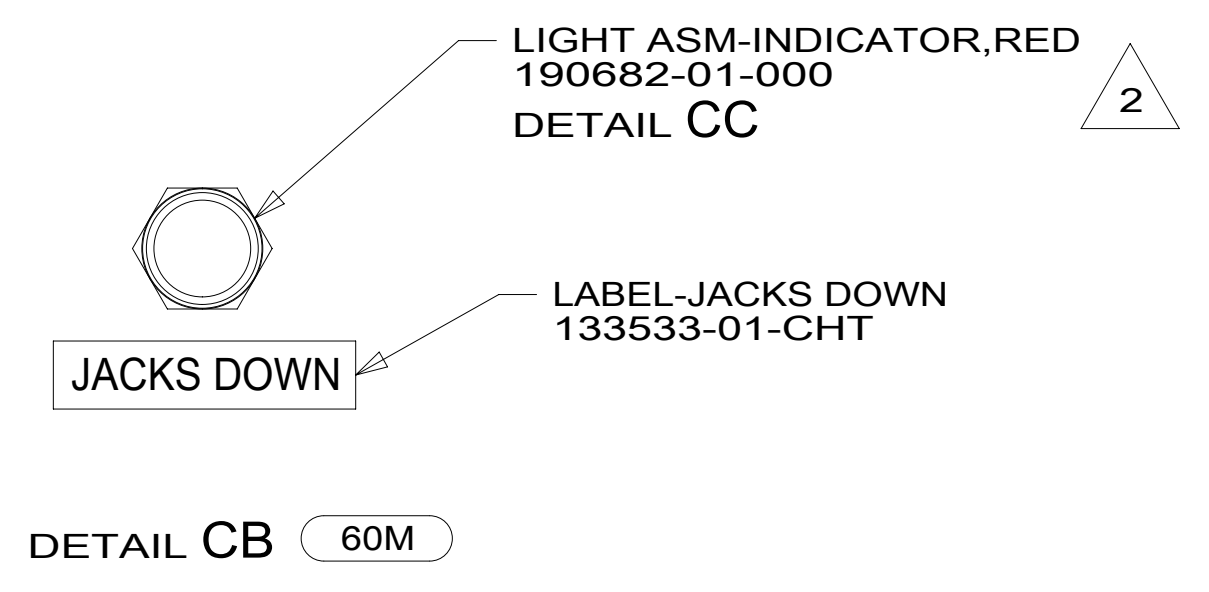
DESCRIPTION:	1B1 265	
WIRING INSTL-CHASSIS		
SHEET:	ITEM/PART NO:	REV
2 OF 7	000021128 / 31416801000	



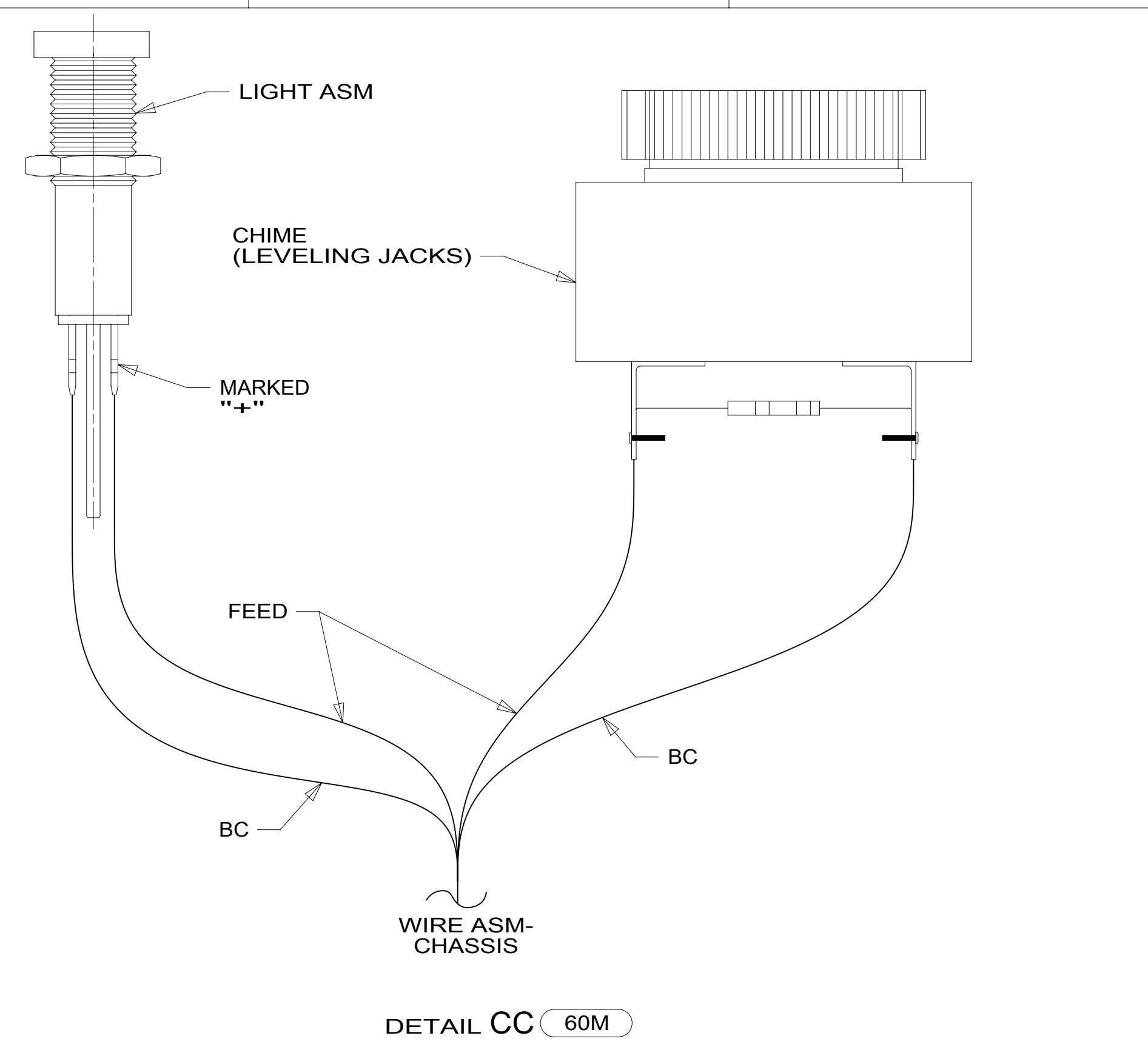
DETAIL CA



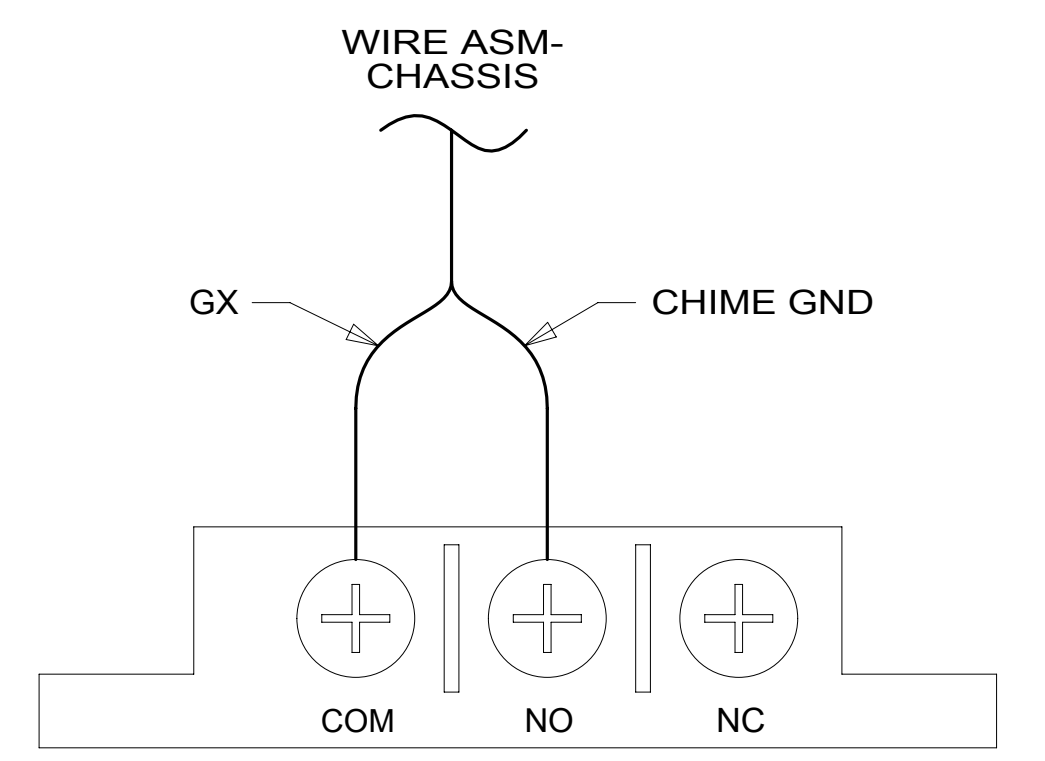
DETAIL CD 60M



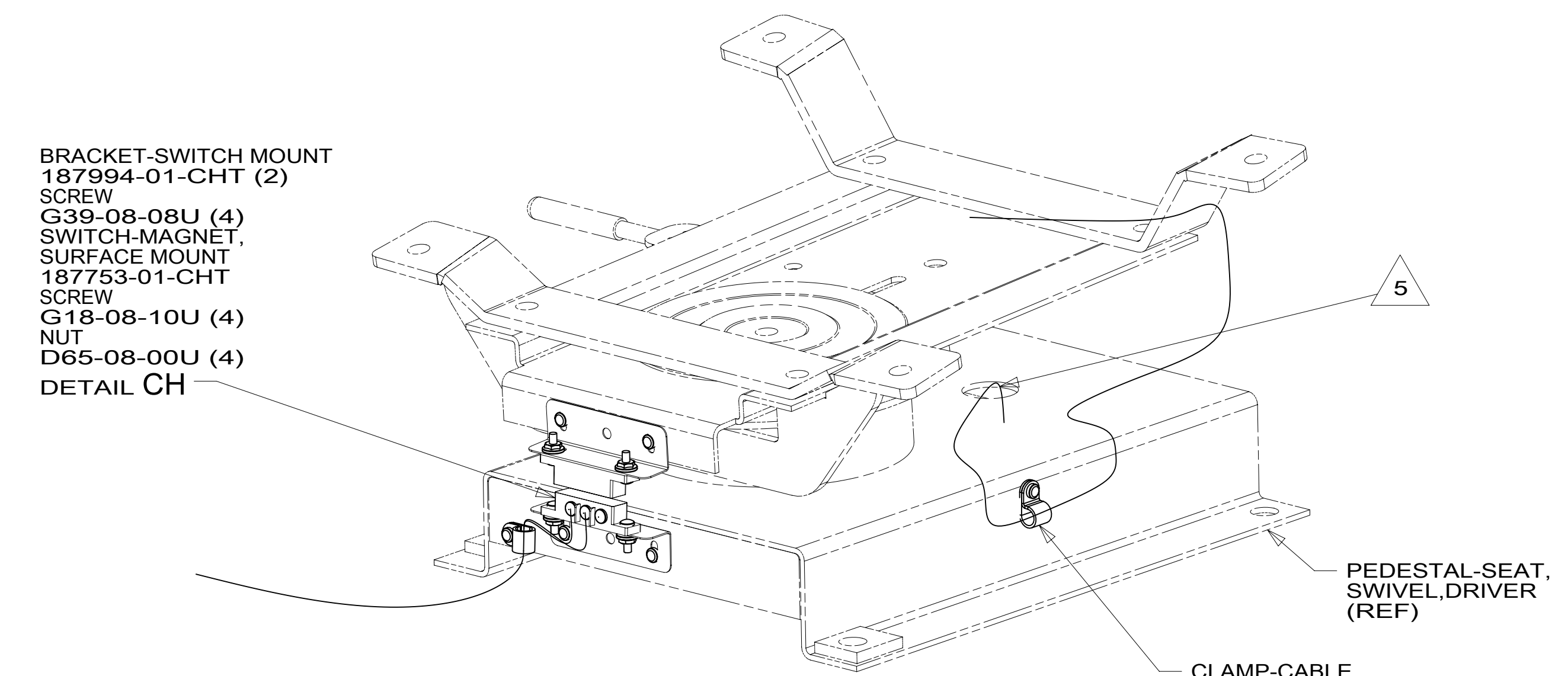
DETAIL CE



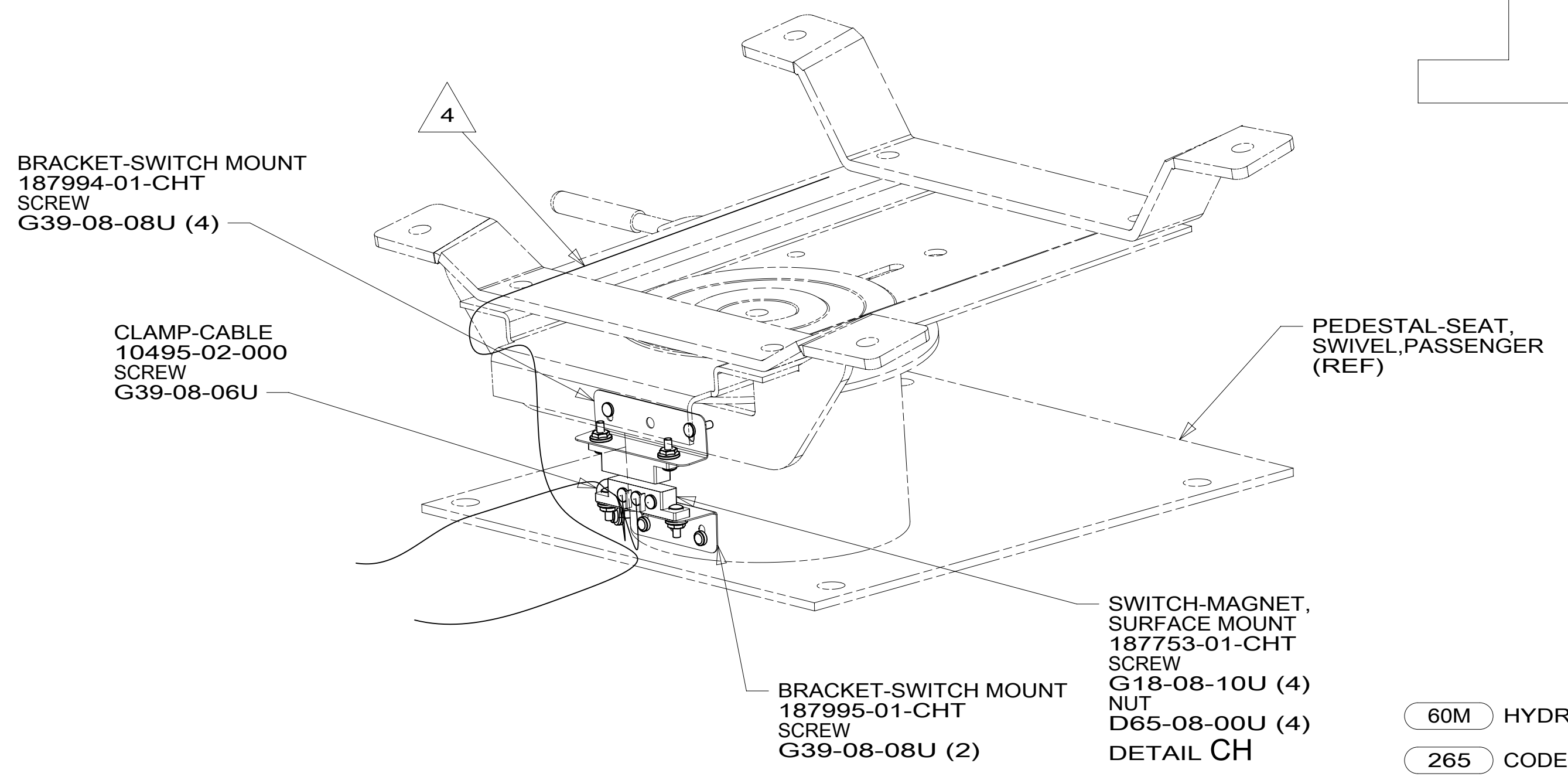
DETAIL CC 60M



DETAIL CH



DETAIL CF



DETAIL CG

- NOTES:
- 3 INSTALL CLAMP FOR FORD SEAT WIRING.
 - 2 FOR HOLE SIZE AND LOCATION SEE DETAIL CD.
 - 1 PART OF WIRE ASM-CHASSIS.
 - 5 COVER WIRING WITH CONVOLUTE 41953-01-000 (150 MM) TO PROTECT WIRES FROM SHARP EDGES WHERE THEY PASS THROUGH SEAT PEDESTAL. SECURE BOTH ENDS TO WIRES WITH TAPE 8363-01-000.
 - 4 ATTACH WIRE TIE 116673-01-000 TO FORD SEAT WIRING.

FOR ELECTRICAL TORQUE SPECIFICATIONS SEE DWG NO. 128783-01-000

FOR ELECTRICAL CALLOUTS SEE DWG NO. 121339-01-000

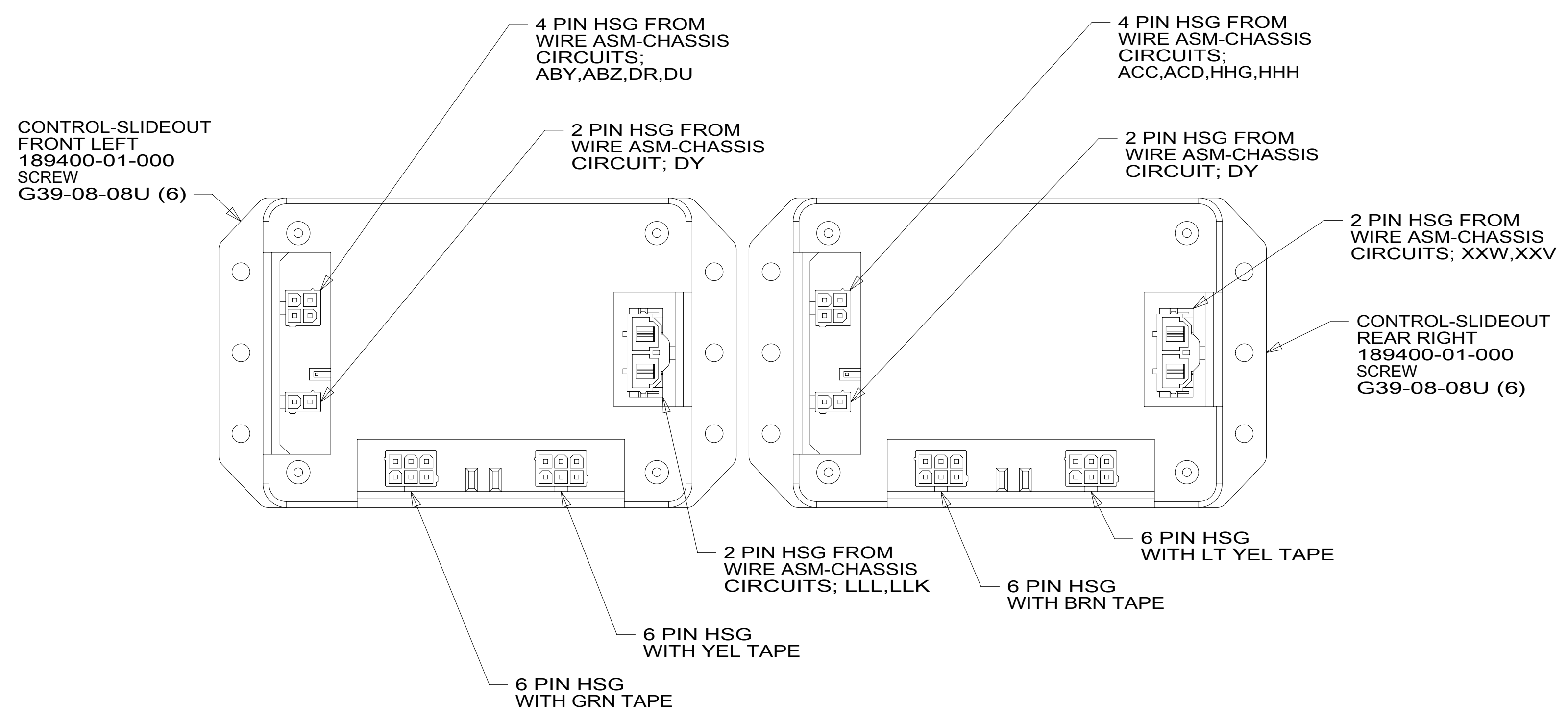
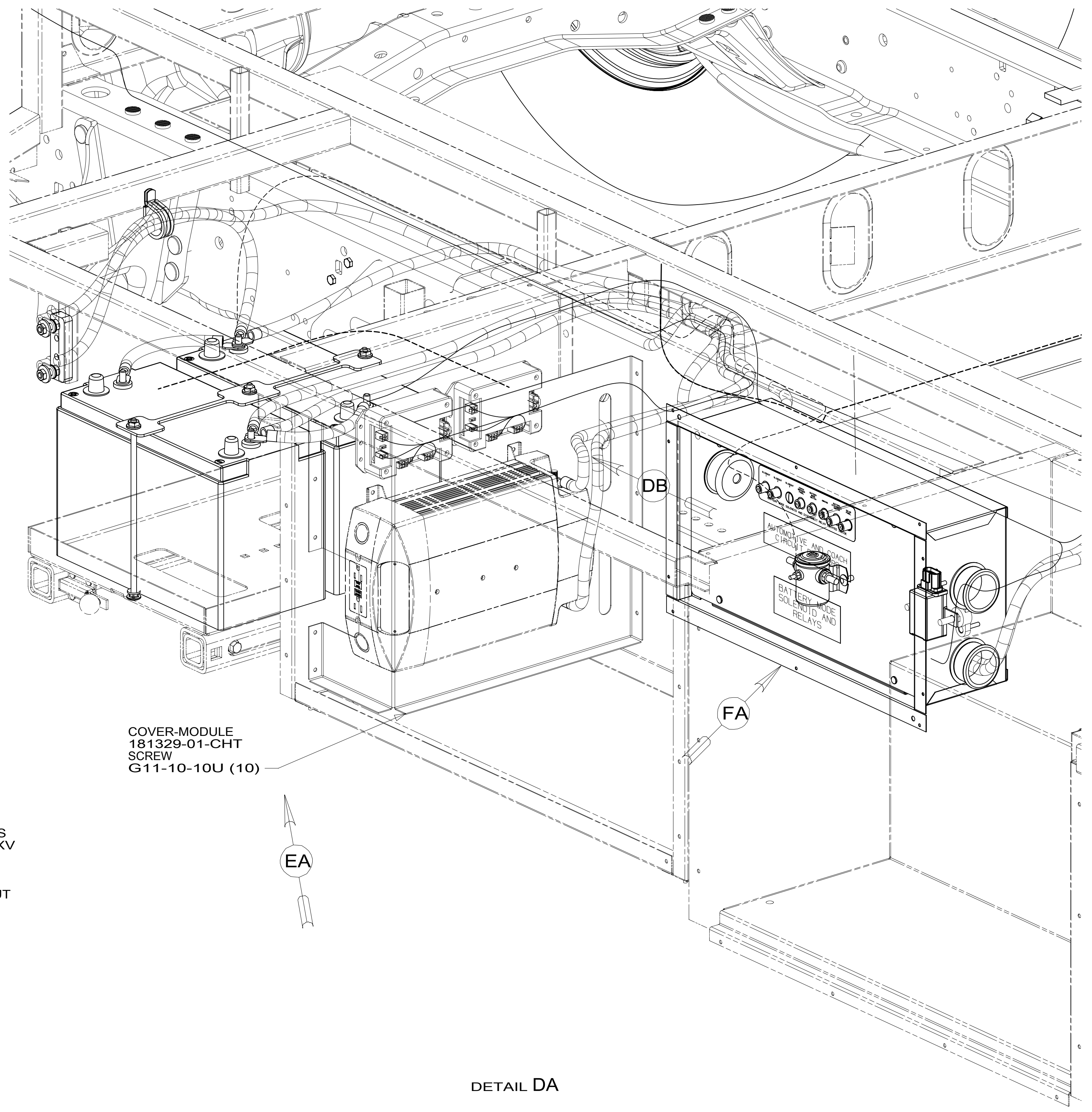
- 60M HYDRAULIC LEVEL JACKS-AUTO
- 265 CODES/STANDARDS-CSA/CMVSS
- 1B1 CODES/STANDARDS USA

DESCRIPTION:		1B1 265	
WIRING INSTL-CHASSIS			
SHEET:	ITEM/PART NO.:	REV:	
3 OF 7	000021128 / 31416801000		

8 7 6 5 4 3 2 1

D
C
B
A

D
C
B
A



DETAIL DA

DETAIL DB

265 CODES/STANDARDS-CSA/CMVSS
1B1 CODES/STANDARDS USA

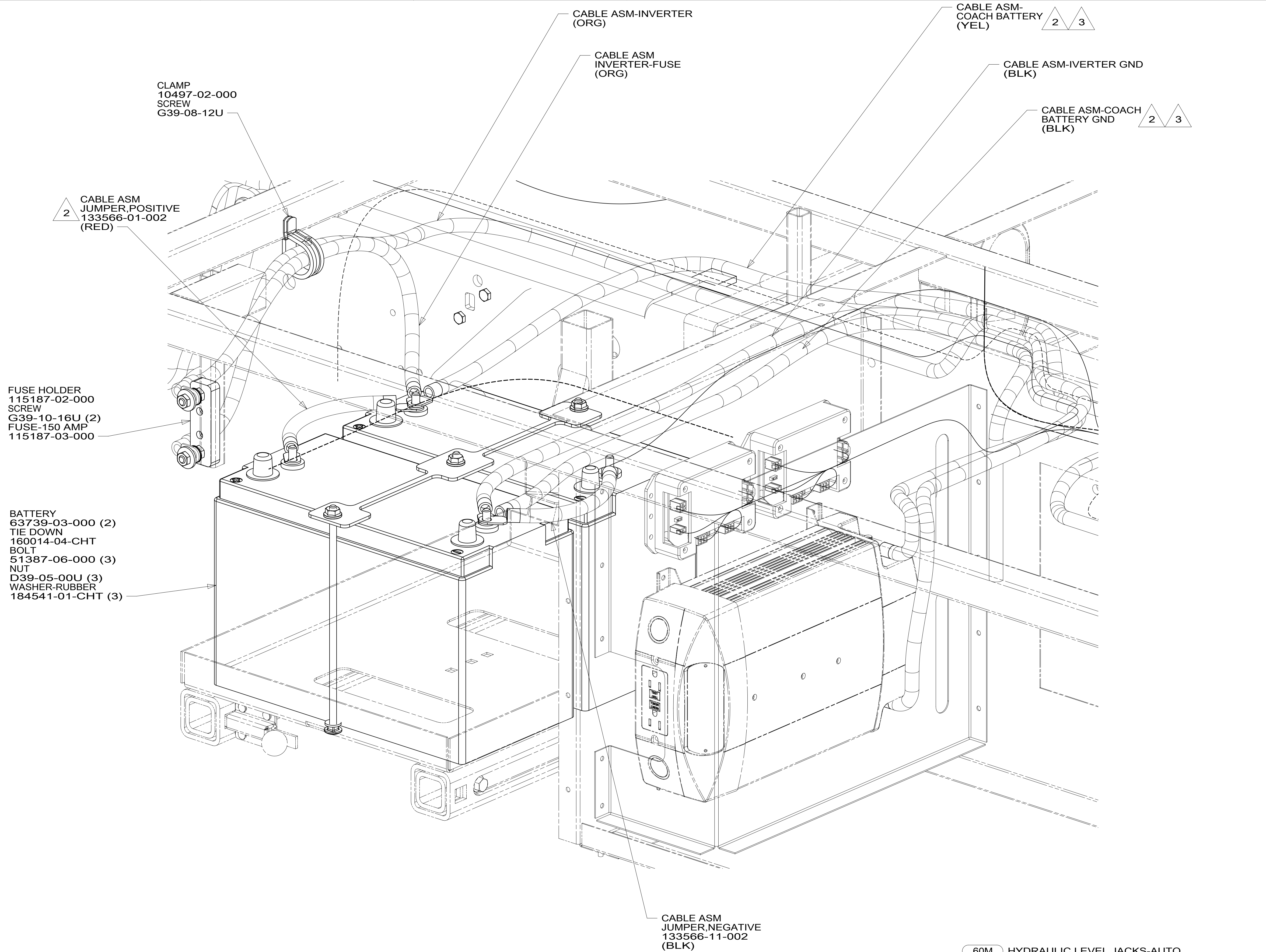
FOR ELECTRICAL TORQUE SPECIFICATIONS SEE DWG NO. 128783-01-000

FOR ELECTRICAL CALLOUTS SEE DWG NO. 121339-01-000

DESCRIPTION:	1B1 265 16Y	
WIRING INSTL-CHASSIS		
SHEET:	ITEM/PART NO.:	REV
4 OF 7	000021128 / 31416801000	

8 7 6 5 4 3 2 1 18-Jan-2017

CABLE ASM-STARTER (RED)		141415-34-052
CABLE ASM-COACH BATTERY (YEL)		141415-52-020
CABLE ASM-COACH BATTERY GND (BLK)		133566-12-015
CABLE ASM-GENERATOR (GRN)		141415-42-030
CABLE ASM-GENERATOR GND (BLK)		133566-12-008
LEVELING SYSTEM POWER CABLE (BLU)	60M	141415-22-017
CABLE ASM INVERTER FUSE (ORG)		141415-64-011
CABLE ASM INVERTER (ORG)		141415-64-015
CABLE ASM INVERTER GND (BLK)		133566-12-011
INVERTER GND		139776-02-011
LEVELING SYSTEM GROUND CABLE (BLK)	60M	133566-12-005



- 3 THE POSITIVE AND NEGATIVE BATTERY CABLES ARE TO BE TERMINATED ON OPPOSITE BATTERIES.
- 2 BATTERY CABLES ARE NOT TO BE ROUTED OVER BATTERY FILL CAPS.

1. SEE WIRING INSTL-CHASSIS FOR ADDITIONAL INFORMATION.

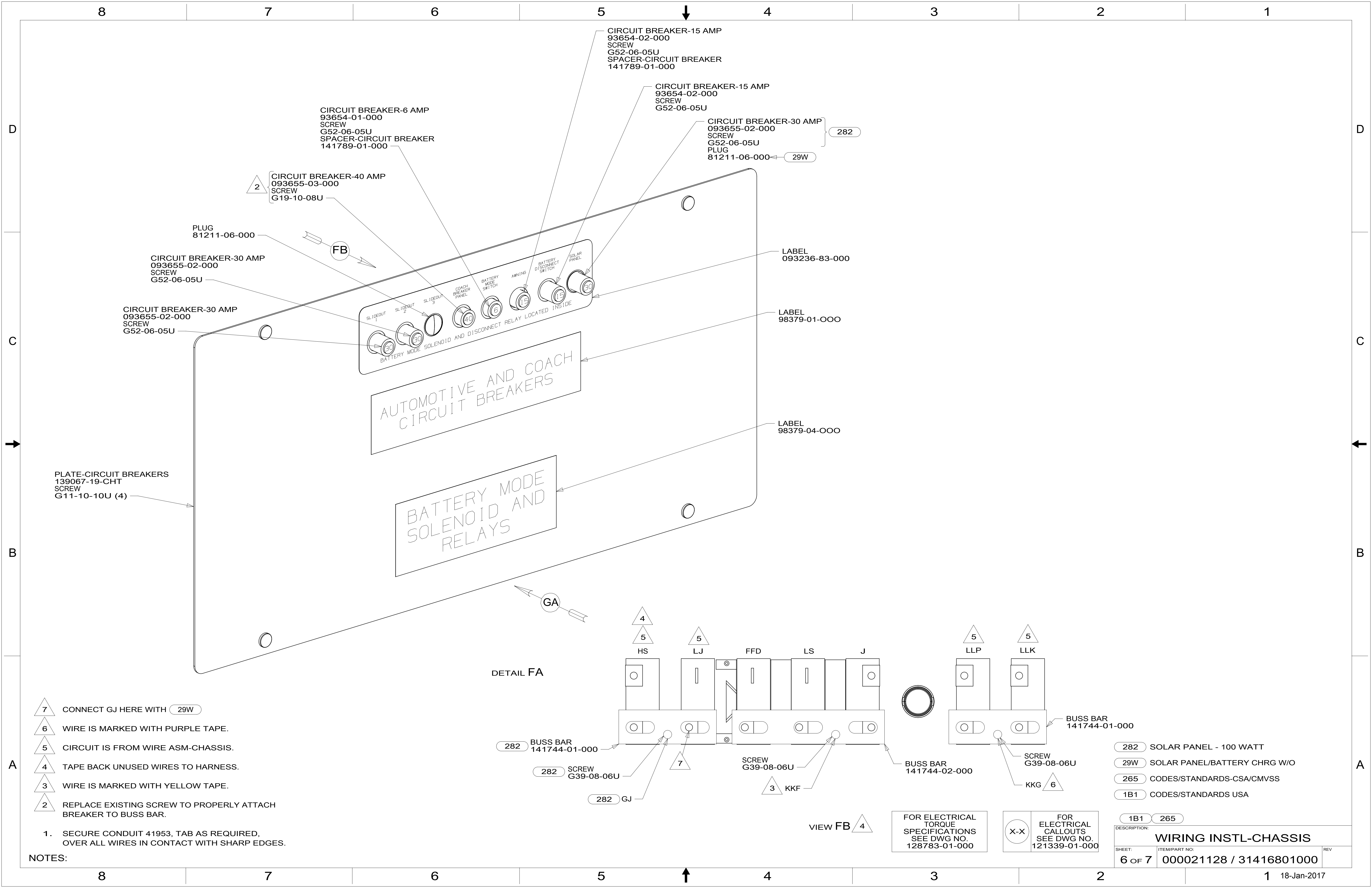
NOTES:

FOR ELECTRICAL TORQUE SPECIFICATIONS SEE DWG NO. 128783-01-000

FOR ELECTRICAL CALLOUTS SEE DWG NO. 121339-01-000

- 60M HYDRAULIC LEVEL JACKS-AUTO
- 265 CODES/STANDARDS-CSA/CMVSS
- 1B1 CODES/STANDARDS USA

DESCRIPTION:		WIRING INSTL-CHASSIS	
SHEET:	ITEM/PART NO.:	REV:	
5 OF 7	000021128 / 31416801000		



CIRCUIT BREAKER-15 AMP
93654-02-000
SCREW
G52-06-05U
SPACER-CIRCUIT BREAKER
141789-01-000

CIRCUIT BREAKER-15 AMP
93654-02-000
SCREW
G52-06-05U

CIRCUIT BREAKER-30 AMP
093655-02-000
SCREW
G52-06-05U
PLUG
81211-06-000

CIRCUIT BREAKER-6 AMP
93654-01-000
SCREW
G52-06-05U
SPACER-CIRCUIT BREAKER
141789-01-000

CIRCUIT BREAKER-40 AMP
093655-03-000
SCREW
G19-10-08U

PLUG
81211-06-000

CIRCUIT BREAKER-30 AMP
093655-02-000
SCREW
G52-06-05U

CIRCUIT BREAKER-30 AMP
093655-02-000
SCREW
G52-06-05U

PLATE-CIRCUIT BREAKERS
139067-19-CHT
SCREW
G11-10-10U (4)

AUTOMOTIVE AND COACH
CIRCUIT BREAKERS

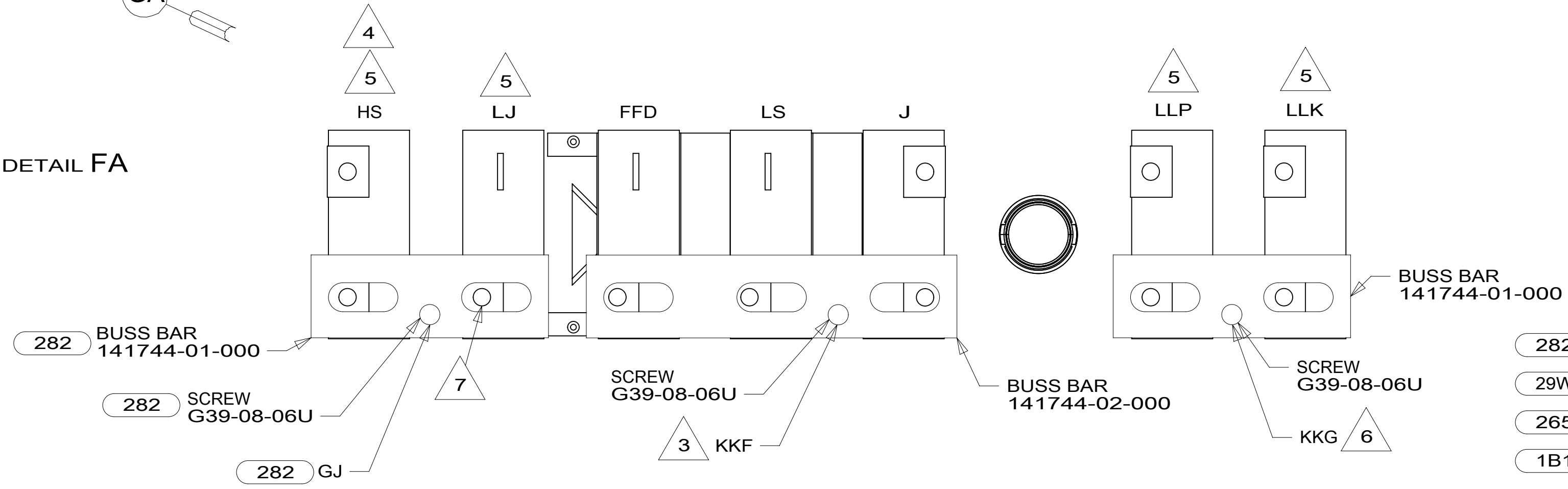
BATTERY MODE
SOLENOID AND
RELAYS

LABEL
093236-83-000

LABEL
98379-01-000

LABEL
98379-04-000

DETAIL FA



- 7 CONNECT GJ HERE WITH 29W
- 6 WIRE IS MARKED WITH PURPLE TAPE.
- 5 CIRCUIT IS FROM WIRE ASM-CHASSIS.
- 4 TAPE BACK UNUSED WIRES TO HARNESS.
- 3 WIRE IS MARKED WITH YELLOW TAPE.
- 2 REPLACE EXISTING SCREW TO PROPERLY ATTACH BREAKER TO BUSS BAR.

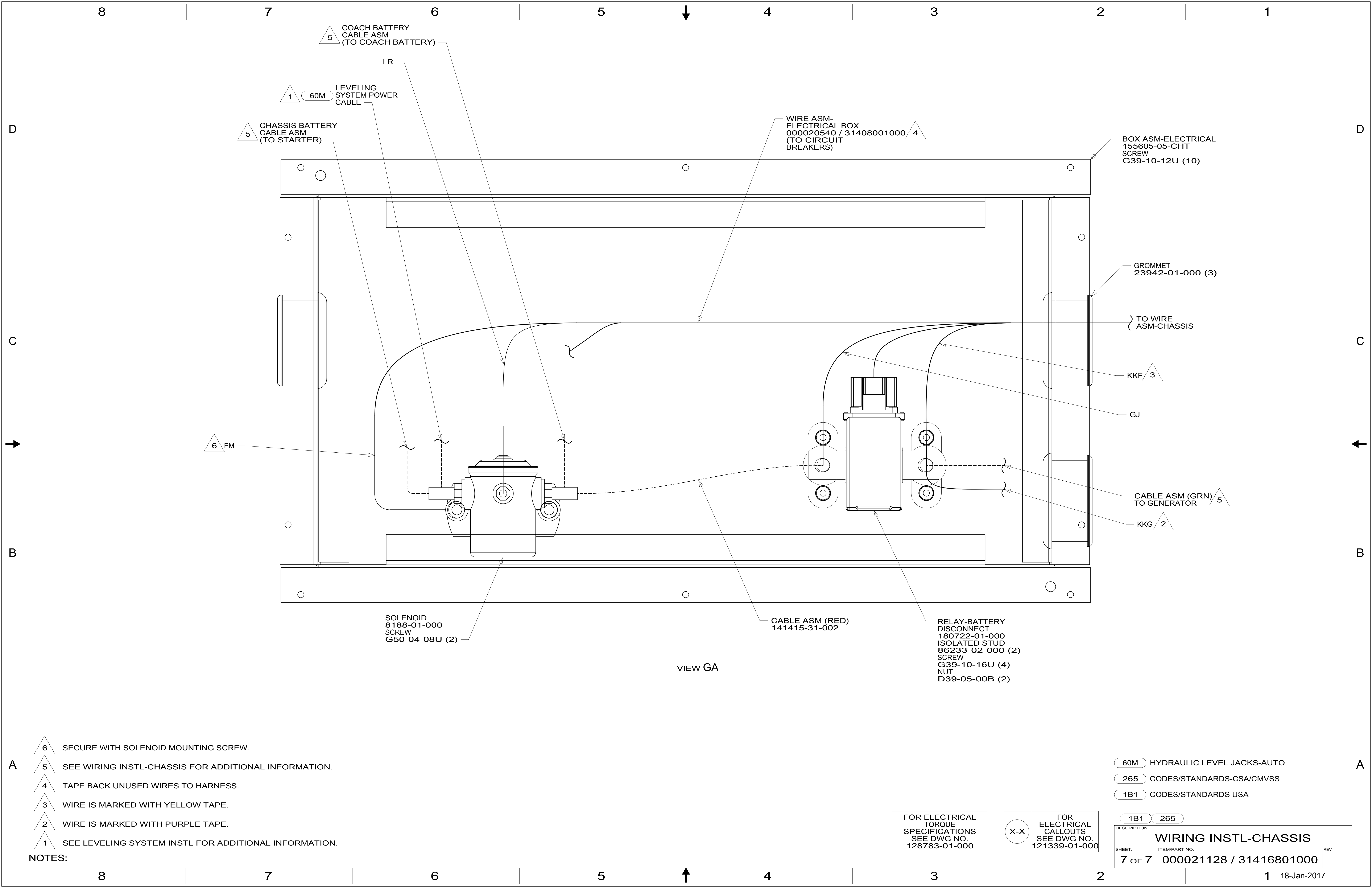
NOTES:
1. SECURE CONDUIT 41953, TAB AS REQUIRED, OVER ALL WIRES IN CONTACT WITH SHARP EDGES.

FOR ELECTRICAL TORQUE SPECIFICATIONS SEE DWG NO. 128783-01-000

FOR ELECTRICAL CALLOUTS SEE DWG NO. 121339-01-000

- 282 SOLAR PANEL - 100 WATT
- 29W SOLAR PANEL/BATTERY CHRGR W/O
- 265 CODES/STANDARDS-CSA/CMVSS
- 1B1 CODES/STANDARDS USA

DESCRIPTION:		1B1	265
WIRING INSTL-CHASSIS			
SHEET:	ITEM/PART NO.:	REV	
6 OF 7	000021128 / 31416801000		



5 COACH BATTERY
CABLE ASM
(TO COACH BATTERY)

1 60M LEVELING
SYSTEM POWER
CABLE

5 CHASSIS BATTERY
CABLE ASM
(TO STARTER)

WIRE ASM-
ELECTRICAL BOX
000020540 / 31408001000 4
(TO CIRCUIT
BREAKERS)

BOX ASM-ELECTRICAL
155605-05-CHT
SCREW
G39-10-12U (10)

GROMMET
23942-01-000 (3)

TO WIRE
ASM-CHASSIS

KKF 3

GJ

CABLE ASM (GRN)
TO GENERATOR 5

KKG 2

6 FM

SOLENOID
8188-01-000
SCREW
G50-04-08U (2)

CABLE ASM (RED)
141415-31-002

RELAY-BATTERY
DISCONNECT
180722-01-000
ISOLATED STUD
86233-02-000 (2)
SCREW
G39-10-16U (4)
NUT
D39-05-00B (2)

VIEW GA

- NOTES:
- 6 SECURE WITH SOLENOID MOUNTING SCREW.
 - 5 SEE WIRING INSTL-CHASSIS FOR ADDITIONAL INFORMATION.
 - 4 TAPE BACK UNUSED WIRES TO HARNESS.
 - 3 WIRE IS MARKED WITH YELLOW TAPE.
 - 2 WIRE IS MARKED WITH PURPLE TAPE.
 - 1 SEE LEVELING SYSTEM INSTL FOR ADDITIONAL INFORMATION.

- 60M HYDRAULIC LEVEL JACKS-AUTO
- 265 CODES/STANDARDS-CSA/CMVSS
- 1B1 CODES/STANDARDS USA

FOR ELECTRICAL
TORQUE
SPECIFICATIONS
SEE DWG NO.
128783-01-000

FOR ELECTRICAL
CALLOUTS
SEE DWG NO.
121339-01-000

DESCRIPTION: WIRING INSTL-CHASSIS	
SHEET: 7 OF 7	ITEM/PART NO: 000021128 / 31416801000
REV 18-Jan-2017	