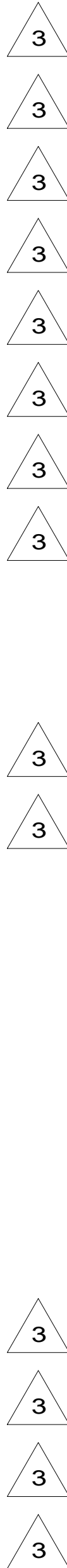
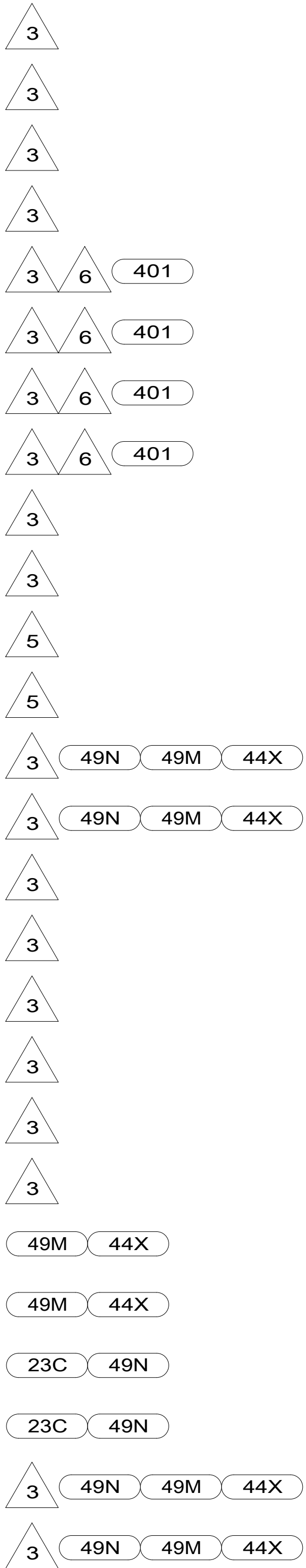


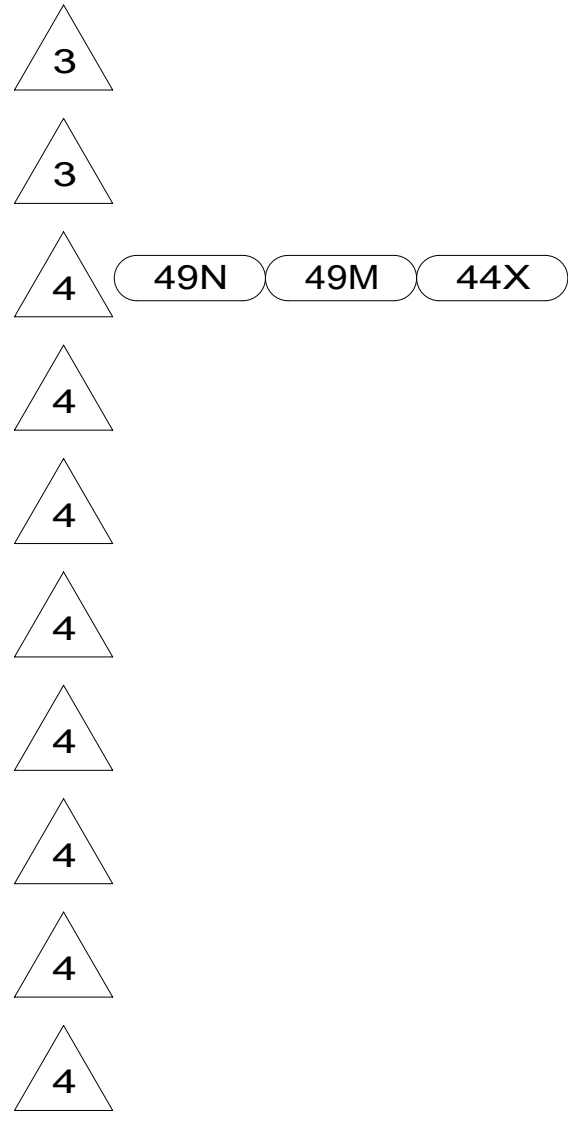
RED	1B1	136135-07-059
	265	136136-07-059
YEL	1B1	136131-05-016
	265	136134-05-016
YEL-2	1B1	136131-13-083
	265	136134-13-083
BLK	1B1	136131-06-083
	265	136134-06-083
BRN	1B1	136131-03-090
	265	136134-03-090
BLU	1B1	136131-02-074
	265	136134-02-074
GRN	1B1	136135-08-059
	265	136136-08-059
PUR	1B1	136131-04-068
	265	136134-04-068
WHT	1B1	136135-09-040
	265	136136-09-040
MAIN	1B1	136139-01-066
	265	136140-01-066
GROUND MAIN		136145-01-016
GROUND ATS		136145-01-052
GLD	1B1	136131-10-083
	265	136134-10-083
GLD-2	1B1	136131-20-083
	265	136134-20-083



THROW IN WIRE #1	1B1	136131-02-013
	265	136134-02-013
THROW IN WIRE #2	1B1	136131-12-033
	265	136134-12-033
THROW IN WIRE #3	1B1	136131-04-008
	265	136134-04-008
THROW IN WIRE #4	1B1	136131-12-008
	265	136134-12-008
THROW IN WIRE #5	1B1	136131-13-020
	265	136134-13-020
THROW IN WIRE #6	1B1	136131-12-240
	265	136134-12-240
THROW IN WIRE #7	1B1	136131-03-047
	265	136134-03-047
THROW IN WIRE #8	1B1	136131-03-050
	265	136134-03-050
THROW IN WIRE #9	1B1	136131-20-044
	265	136134-20-044
THROW IN WIRE #10	1B1	136131-10-037
	265	136134-10-037
THROW IN WIRE #11	1B1	136131-03-015
	265	136134-03-015
THROW IN WIRE #12	1B1	136131-03-022
	265	136134-03-022
THROW IN WIRE #13	1B1	136131-03-006
	265	136134-03-006



THROW IN WIRE #14	1B1	136131-03-070
	265	136134-03-070
THROW IN WIRE #15	1B1	136131-12-055
	265	136134-12-055
SLIDEOUT WIRE #1		136151-03-026
SLIDEOUT WIRE #2		136151-13-022
SLIDEOUT WIRE #3		136151-06-022
SLIDEOUT WIRE #4		136151-20-022
SLIDEOUT WIRE #5		136151-12-022
SLIDEOUT WIRE #6		136151-03-022
SLIDEOUT WIRE #7		136151-10-022
SLIDEOUT WIRE #8		136151-12-026



- 49N AIR SLEEP SYSTEM - KING SIZE
- 49M AIR SLEEP SYSTEM-QUEEN SIZE
- 44X BED-QUEEN SIDEWALL
- 401 INVERTER-DC/AC, 1000 WATT
- 23C BED-KING OFF SIDEWALL
- 265 CODES/STANDARDS-CSA/CMVSS
- 1B1 CODES/STANDARDS USA

**WINNEBAGO**  
COPYRIGHT 2016 WINNEBAGO INDUSTRIES, INC.

DSNR:	ALL DIMENSIONS ARE IN MILLIMETERS
DFFR:	
UNSPECIFIED TOLERANCES:	MATERIAL:
WHOLE DIM (X) : 3	
ONE-PLACE (X.X) : 1.5	
TWO-PLACE (X.XX) : 0.50	
ANGLE : 1°	
REFER TO ES0018 FOR FASTENER TIGHTENING GUIDELINES	WEIGHT: (LBS) FIRST USED: 17 D33C
DESCRIPTION: <b>LOAD CENTER/ATS ASM</b>	
SHEET: 1 OF 4	ITEM/PART NO: 000020499 / 31407201000

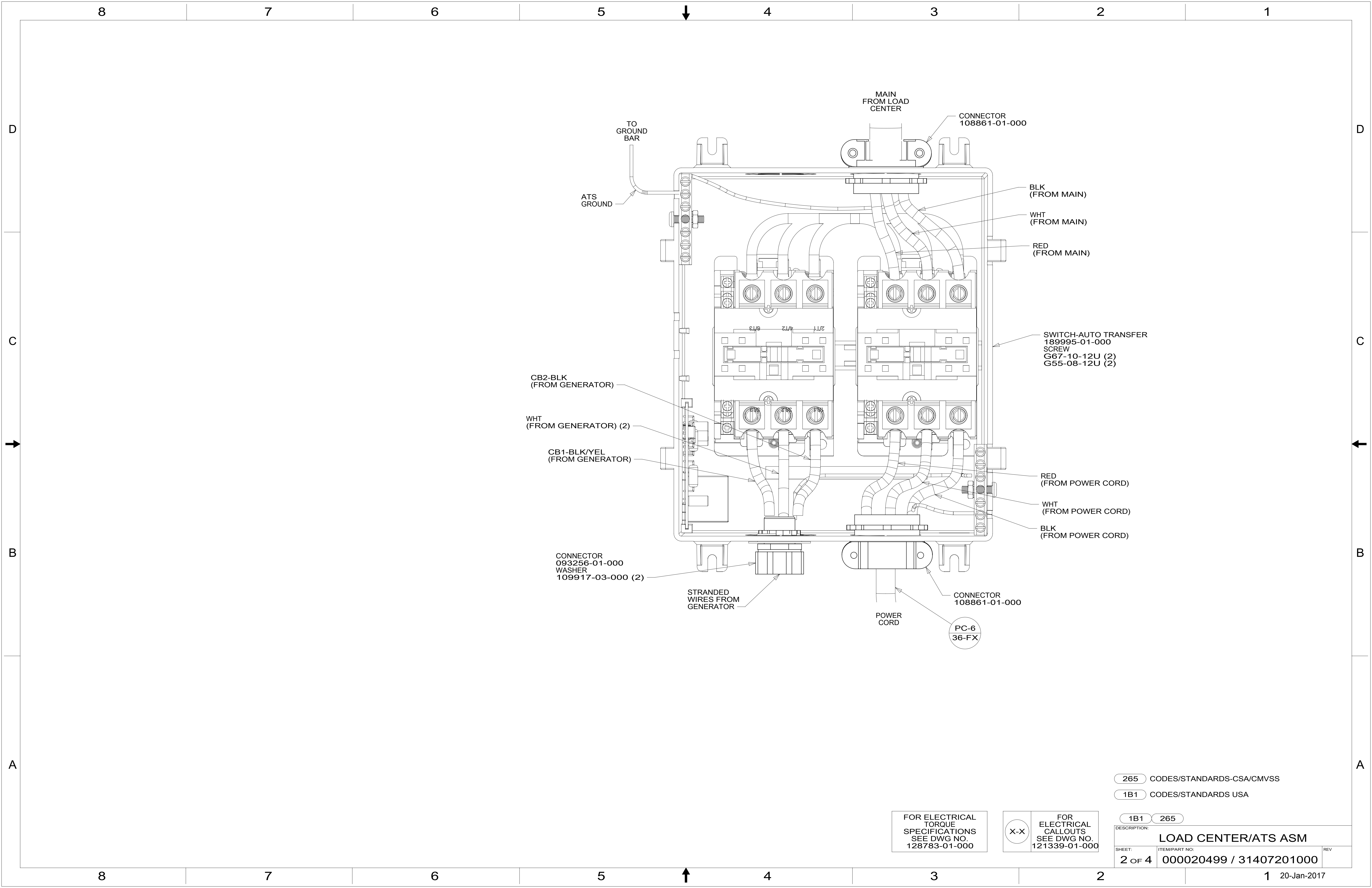
- 6 SEE DETAIL CD FOR CONNECTOR INSTALLATION.
- 5 SEE DETAIL CC FOR CONNECTOR INSTALLATION.
- 4 SEE DETAIL CB FOR CONNECTOR INSTALLATION.
- 3 SEE DETAIL CA FOR CONNECTOR INSTALLATION.

- 2. SECURE WIRES TO BACKSIDE OF LOAD CENTER WITH WIRE TIE 116673-01-000.
- 1. ALL GROUNDS WIRES TO BE COVERED WITH TUBING 8041-02-000.

NOTES:

FOR ELECTRICAL TORQUE SPECIFICATIONS SEE DWG NO. 128783-01-000

FOR ELECTRICAL CALLOUTS SEE DWG NO. 121339-01-000



265 CODES/STANDARDS-CSA/CMVSS  
 1B1 CODES/STANDARDS USA

FOR ELECTRICAL TORQUE SPECIFICATIONS SEE DWG NO. 128783-01-000

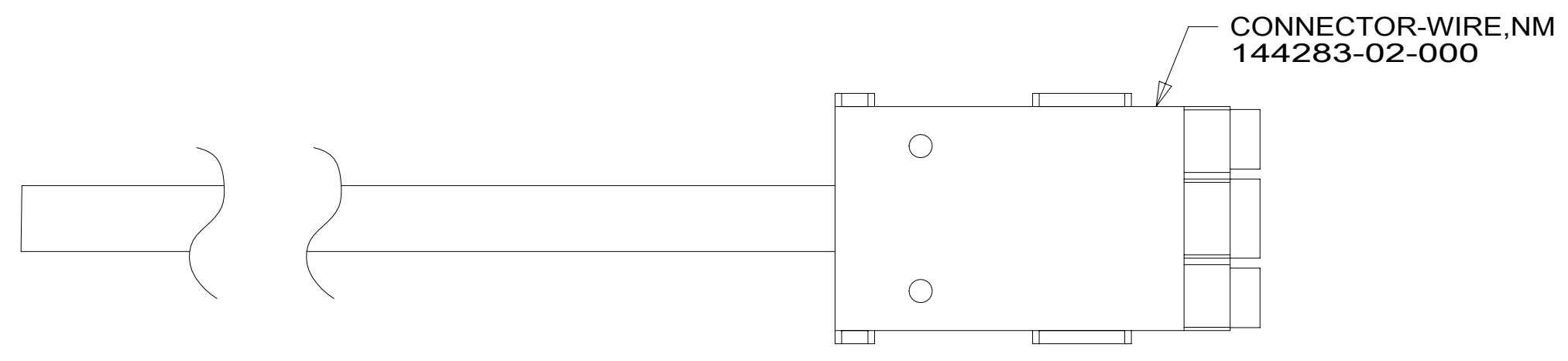
FOR ELECTRICAL CALLOUTS SEE DWG NO. 121339-01-000

X-X

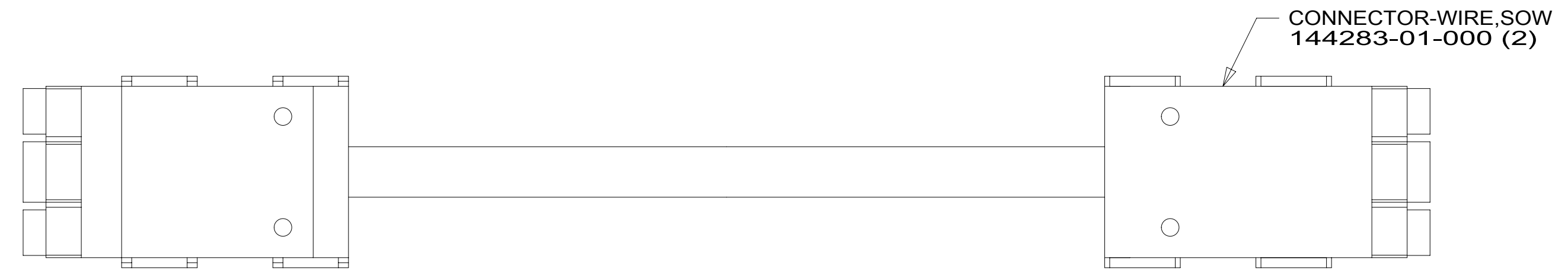
DESCRIPTION: <b>LOAD CENTER/ATS ASM</b>		
SHEET: 2 OF 4	ITEM/PART NO: 000020499 / 31407201000	REV

8 7 6 5 4 3 2 1

D  
C  
B  
A



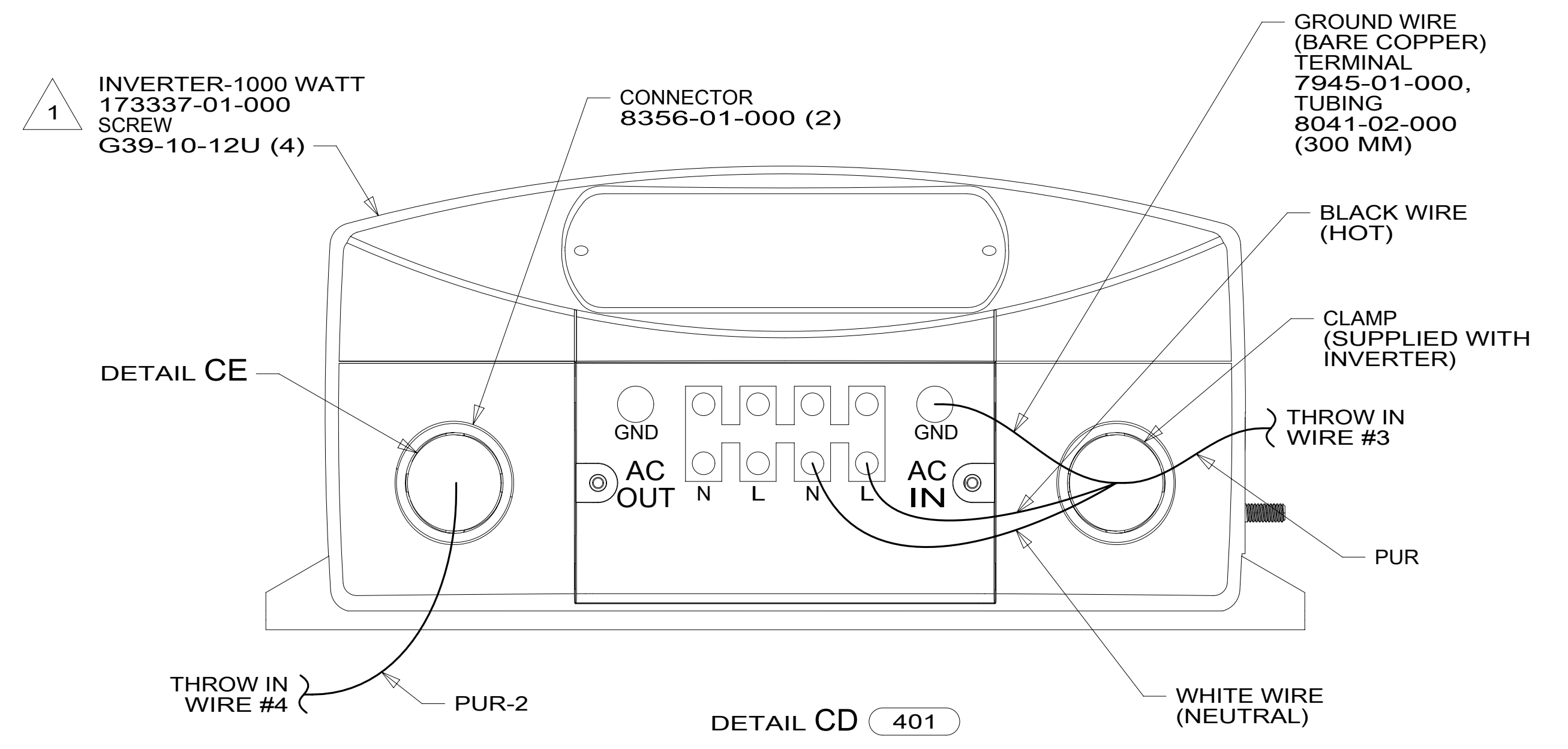
DETAIL CA



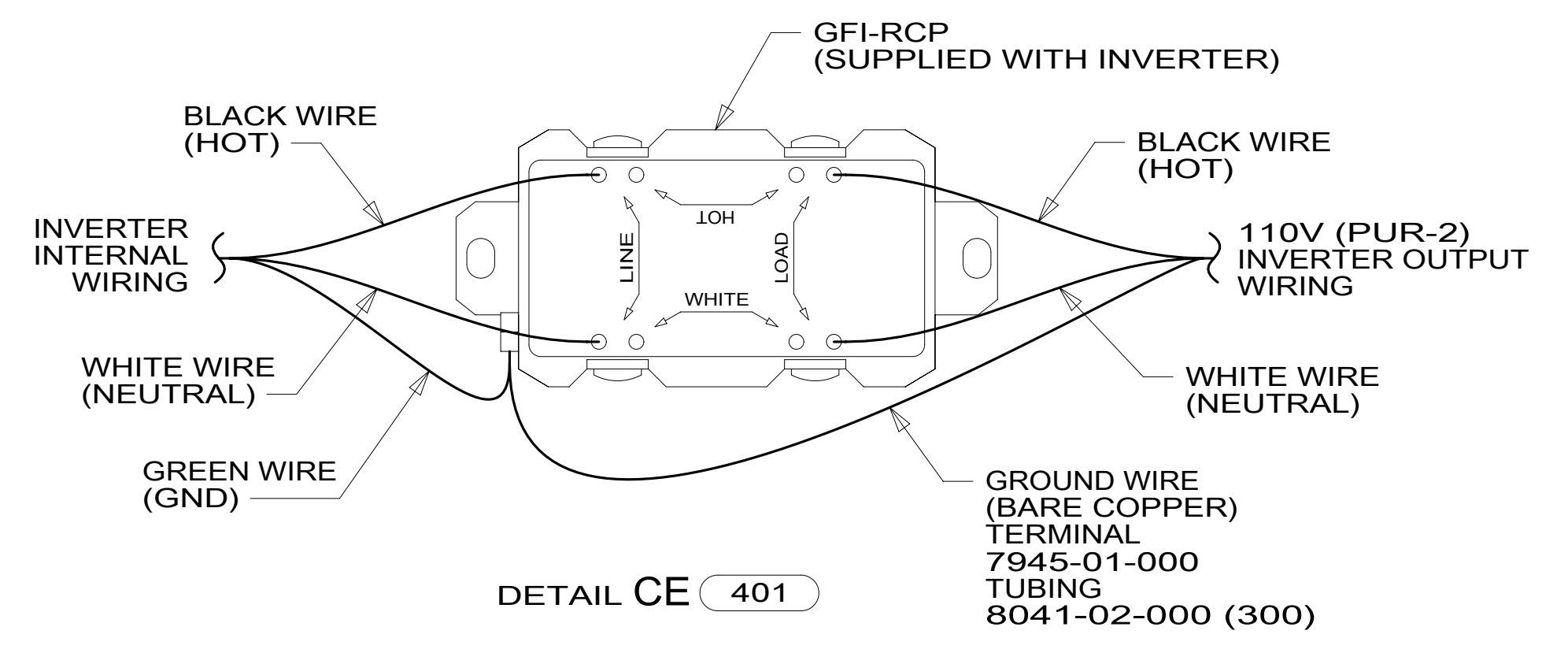
DETAIL CB



DETAIL CC



DETAIL CD 401



DETAIL CE 401

1 INVERTER SUPPLIED WITH REMOTE PANEL. SEND PANEL TO MANUFACTURING LINE.

NOTES:

FOR ELECTRICAL TORQUE SPECIFICATIONS SEE DWG NO. 128783-01-000

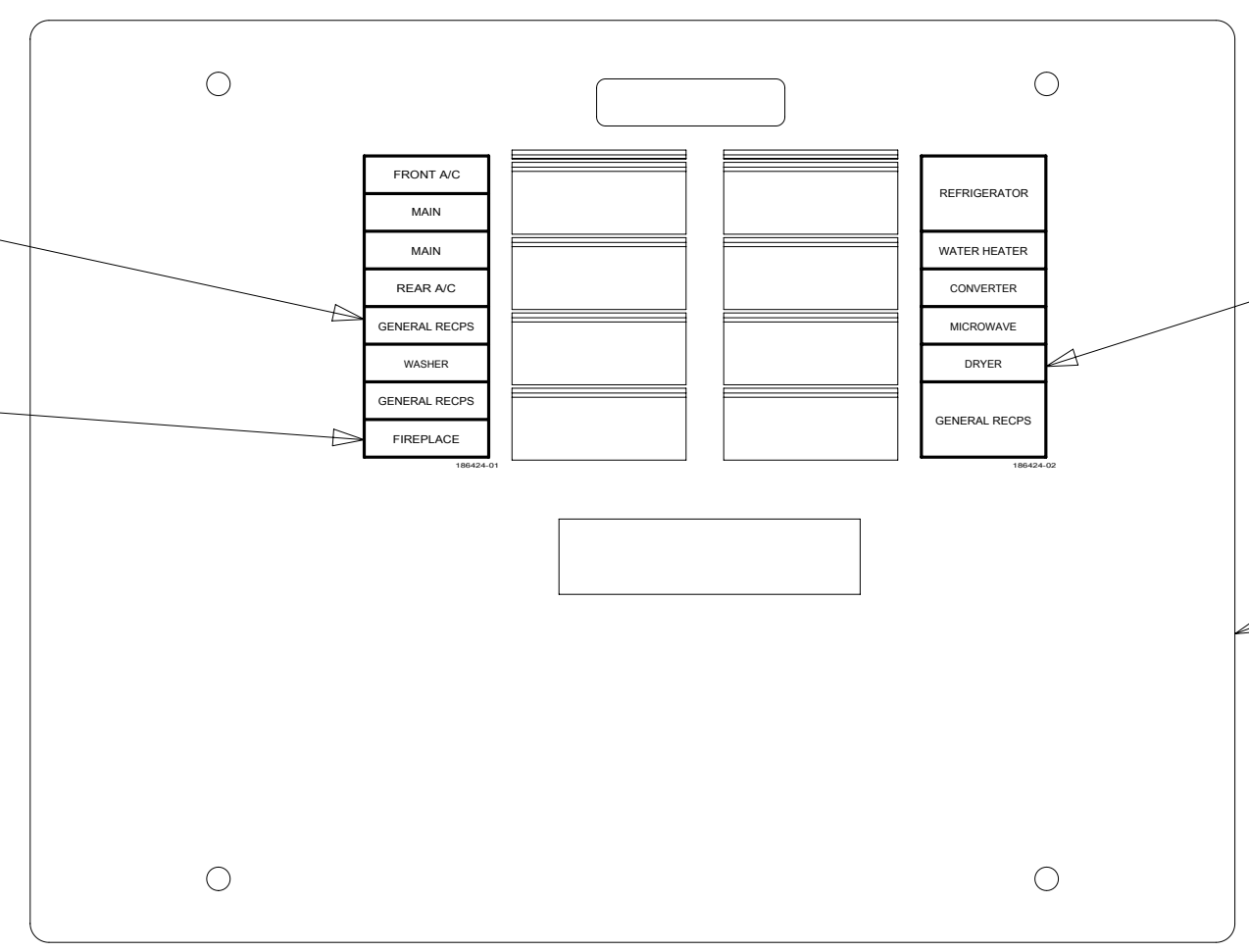
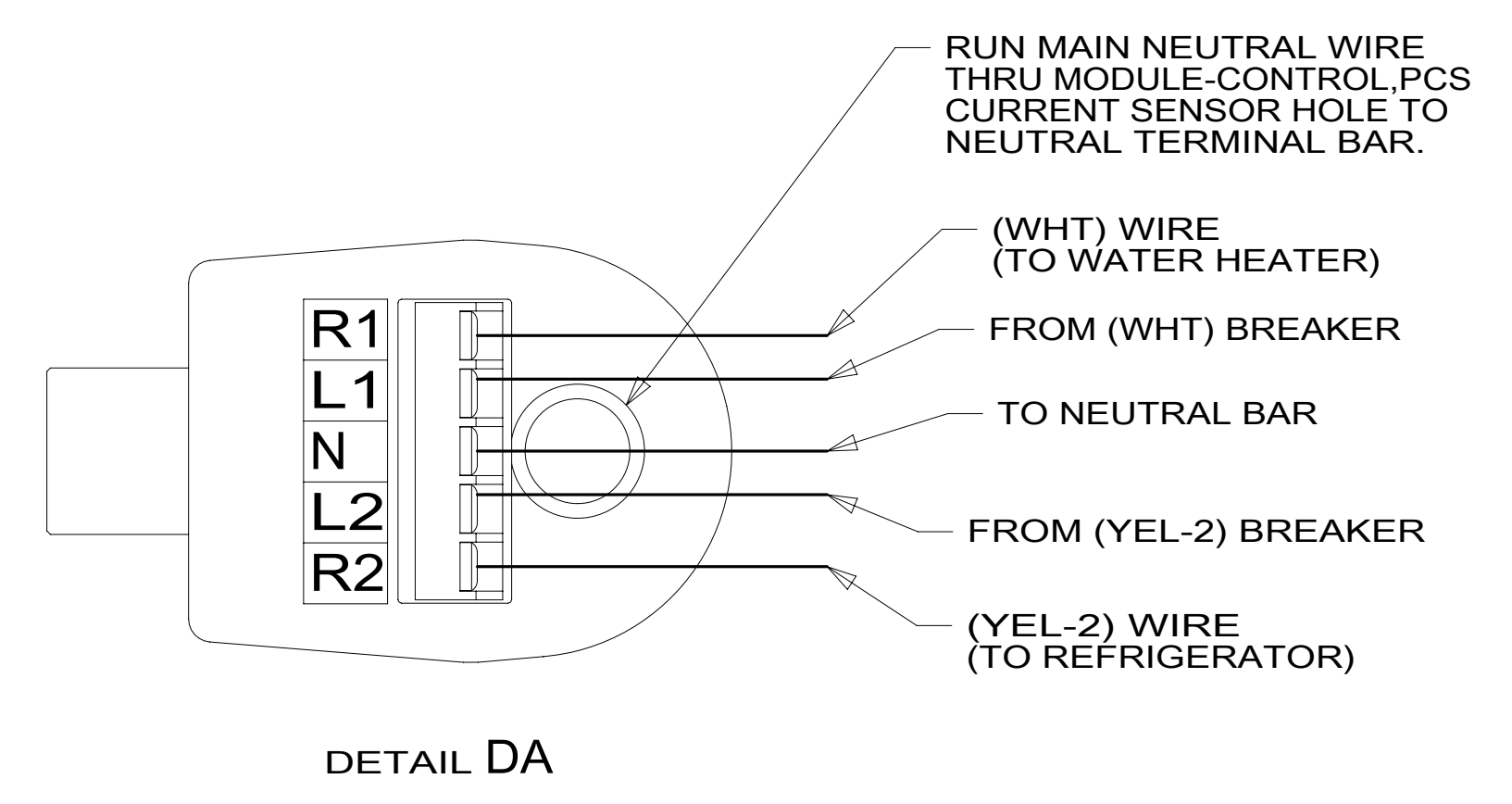
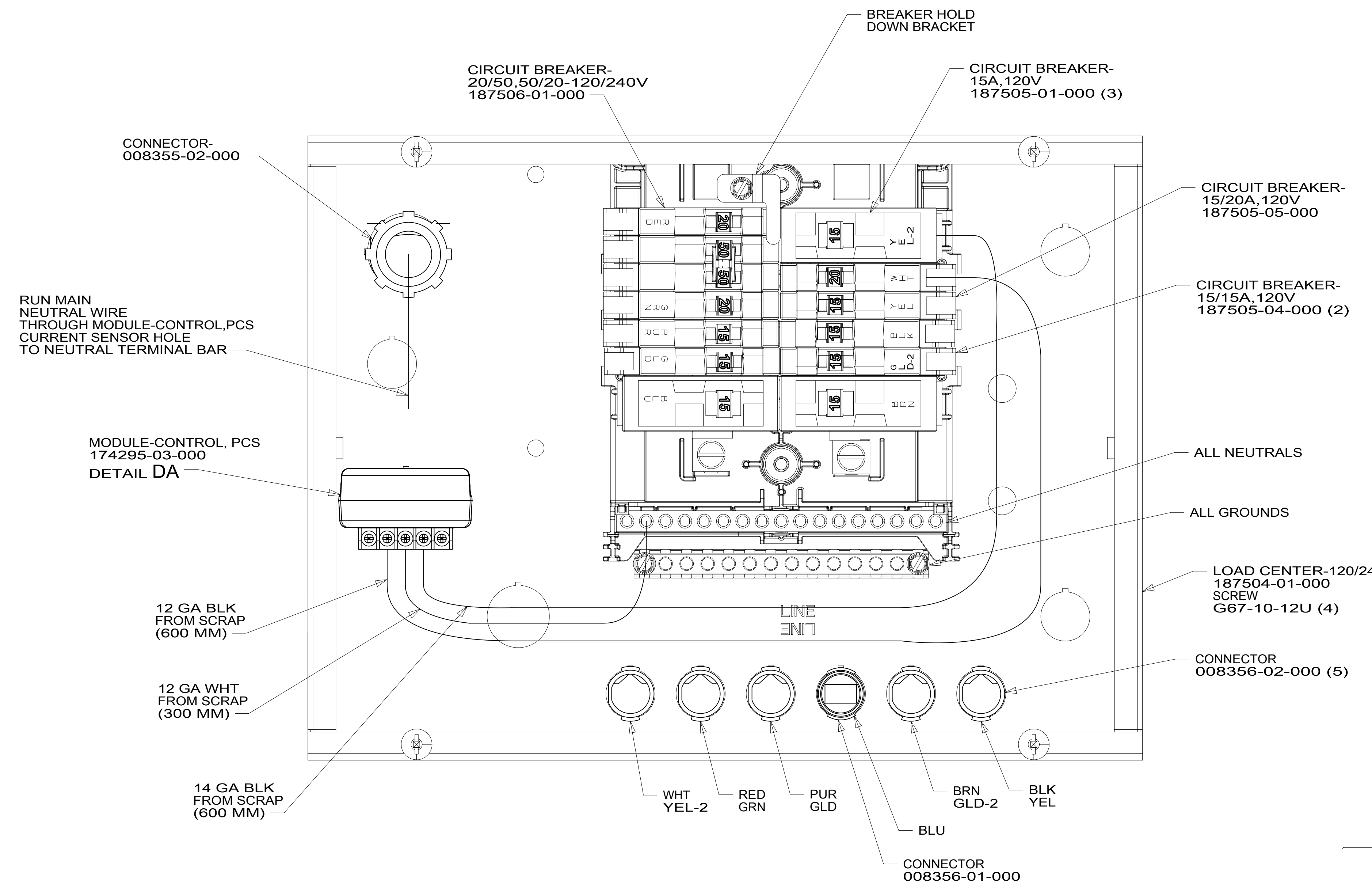
FOR ELECTRICAL CALLOUTS SEE DWG NO. 121339-01-000

- 401 INVERTER-DC/AC, 1000 WATT
- 265 CODES/STANDARDS-CSA/CMVSS
- 1B1 CODES/STANDARDS USA

DESCRIPTION:		<b>LOAD CENTER/ATS ASM</b>	
SHEET:	ITEM/PART NO.:	REV	
3 OF 4	000020499 / 31407201000		

8 7 6 5 4 3 2 1 20-Jan-2017

8 7 6 5 4 3 2 1



- 8 BLACKEN OUT 'FIREPLACE' WITH BLACK MARKER.
- 7 INSTALLED BY ASSEMBLY LINE.
6. REMOVE 400MM FROM OUTER JACKET ON ALL WIRES ENTERING LOAD CENTER AND TRIM INDIVIDUAL CONDUCTORS AS REQUIRED TO MAKE INTERNAL CONNECTIONS
5. ATTACH WIRES TO BACKSIDE OF LOAD CENTER, USE EXISTING HOLES AND TIE-WIRE 116673-01-000.
4. ALL 110V STRANDED WIRE W/O TERMINALS TO BE STRIPPED 10MM AND SOLDER DIPPED.
3. ALL WIRES TO BE CLAMPED WITHIN 200MM OF ATS.
2. GROUND WIRES ARE NOT SHOWN FOR CLARITY.
1. ALL GROUND WIRES TO BE COVERED WITH TUBING 8041-02-000.

NOTES:

FOR ELECTRICAL TORQUE SPECIFICATIONS SEE DWG NO. 128783-01-000

FOR ELECTRICAL CALLOUTS SEE DWG NO. 121339-01-000

- 265 CODES/STANDARDS-CSA/CMVSS
- 1B1 CODES/STANDARDS USA

DESCRIPTION:		1B1 265	
<b>LOAD CENTER/ATS ASM</b>			
SHEET:	ITEM/PART NO.:	REV	
4 OF 4	000020499 / 31407201000		

8 7 6 5 4 3 2 1 20-Jan-2017