

8 7 6 5 4 3 2 1

D

D

C

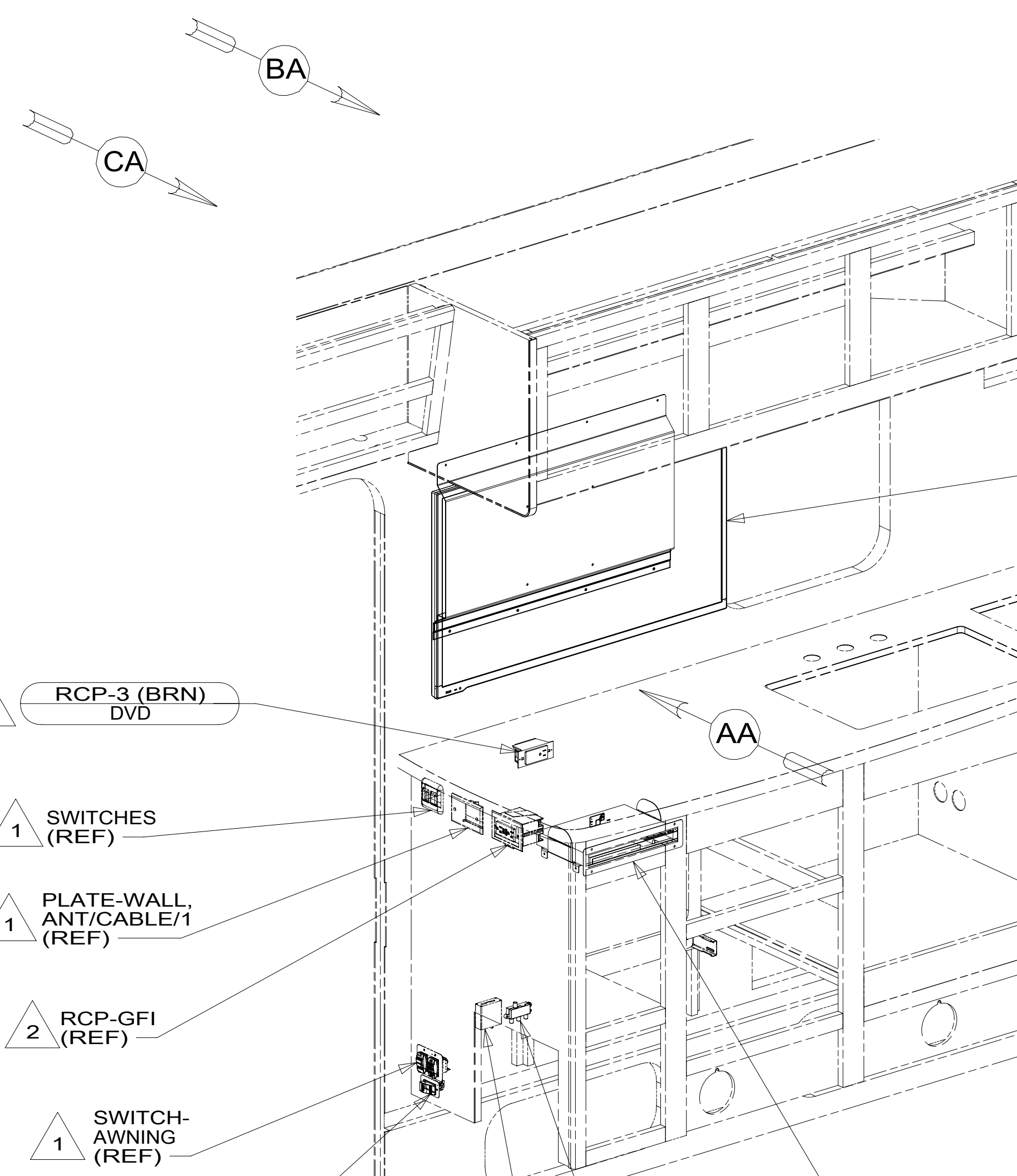
C

B

B

A

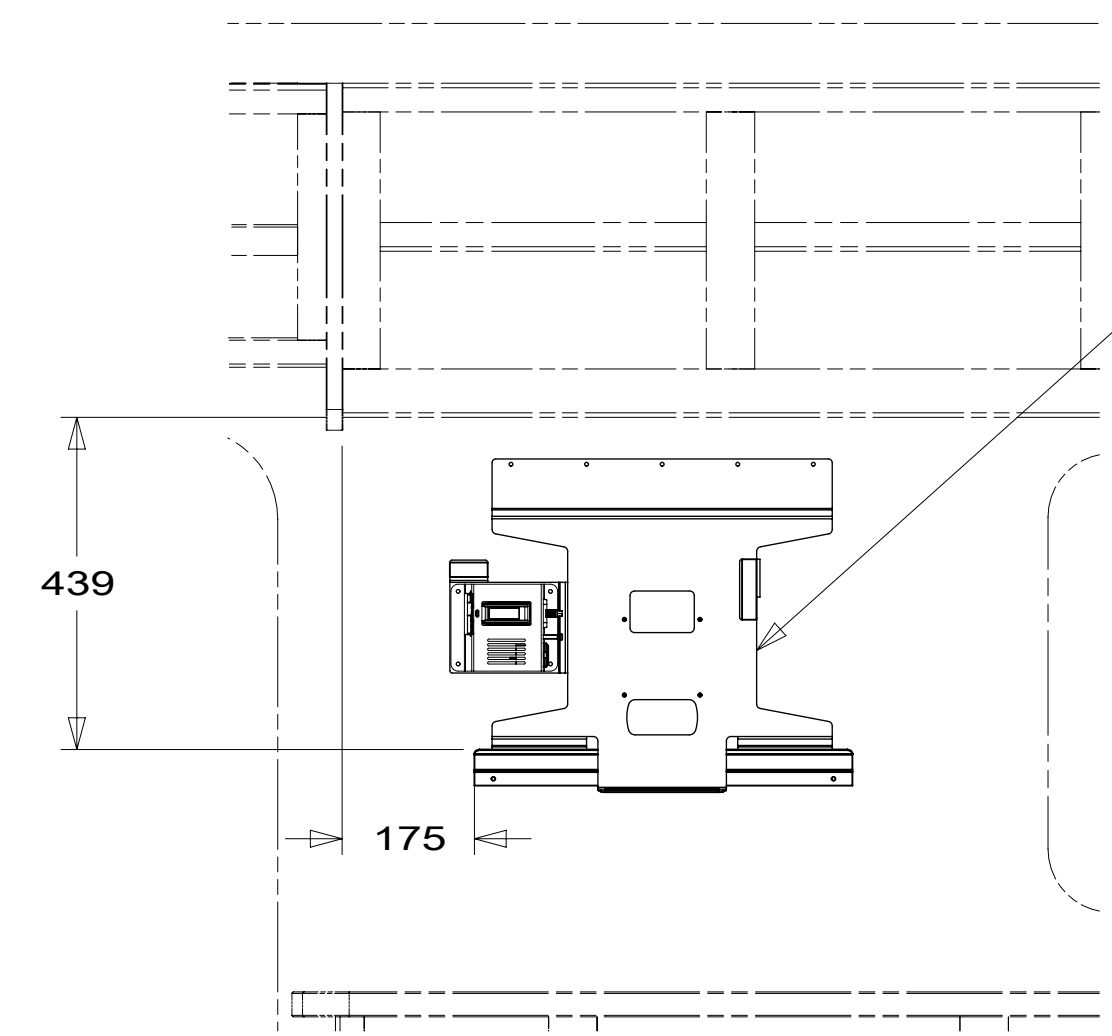
A



- TV-32" HDTV
000031285 / 316939-01-000 } 68Y
- TV-39", FLAT
PANEL DLED, HDTV
000023379 / 314833-01-000 } 09A
- SCREW
(SUPPLIED WITH TV)
TV-24", FLAT
PANEL DLED, HDTV
000031269 / 316937-01-000 } 644

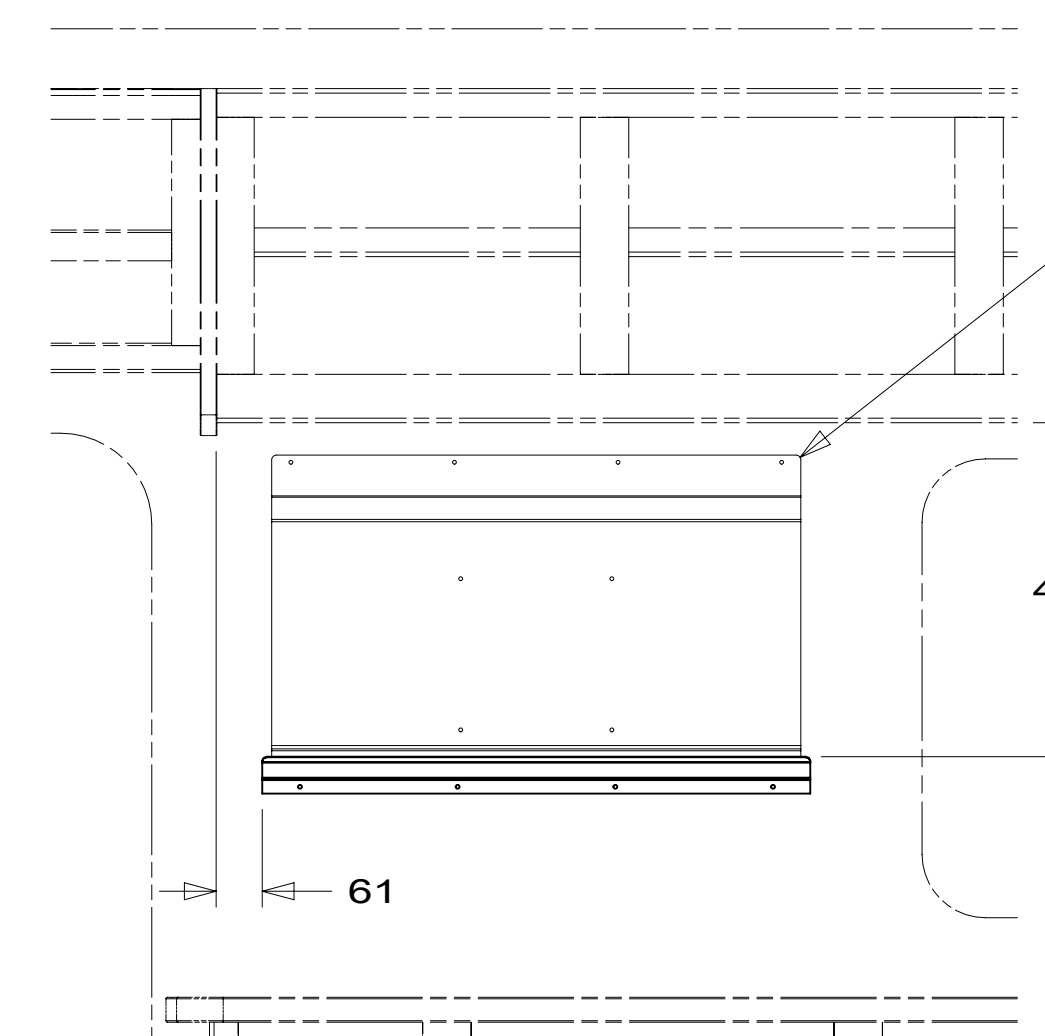
- 2 RCP-3 (BRN)
DVD
- 1 SWITCHES
(REF)
- 1 PLATE-WALL,
ANT/CABLE/1
(REF)
- 2 RCP-GFI
(REF)
- 1 SWITCH-
AWNING
(REF)
- 1 SWITCH-
BATTERY
DISCONNECT
(REF)
- 1 SPLITTER
(REF)
- 1 SPLITTER-HDMI
(REF)

- RADIO-AM/FM/CD/DVD/RMT
302630-01-000 } 644
- BRACKET-DVD PLAYER
156586-11-CHT
SUPPORT-RADIO, REAR
181725-02-CHT
SCREW
000G67-10-12U (5)
TRIM RING-RADIO
164740-06-CHT
SCREW
000G67-10-12U (4)
DVD PLAYER W/HDMI OUT
186774-01-000
TRIM RING-RADIO
164740-05-CHT
SCREW
000G67-10-12U (4)
BRACKET-DVD PLAYER
156586-12-CHT
SCREW
000G67-10-12U (4) } 68Y 09A



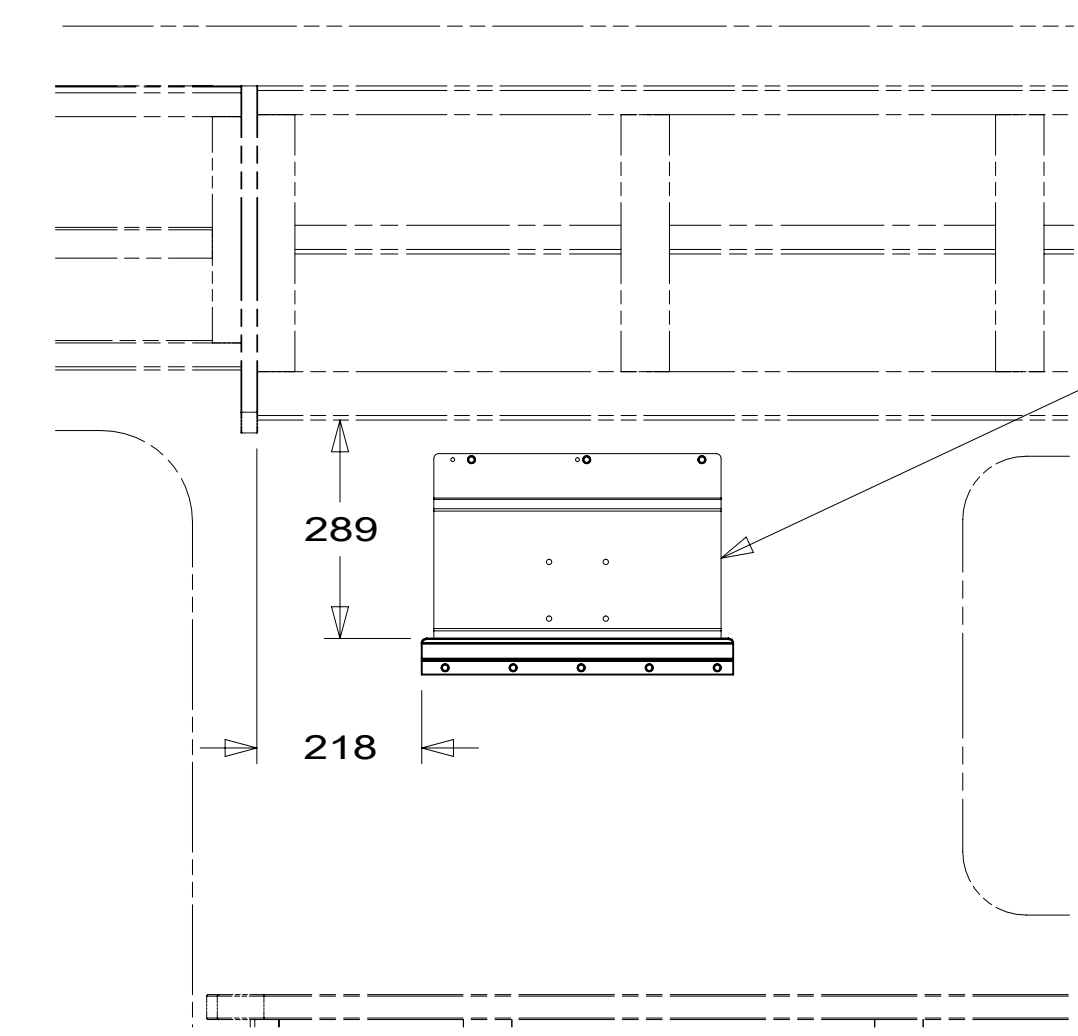
VIEW AA
(TV NOT SHOWN) 68Y

- BRACKET-TV, 32 INSIG
000034881 / 317909-01-CHT
SCREW-MS, M4X0.7X12PPH/DN7985
OMG02U-04-012 (4)
WASHER-LOCK 4IDX07, 10D
OME02U-04-071 (4)
TAPE-FOAM, DBL COATED, 045X.75
076322-22-000 (50 MM)
076322-22-000 (80 MM)
TAPE-FOAM, DBL COATED, 045X1.0
076322-23-000 (150 MM)
INVERTER ASM-155W W/ SOCKET
000034454 / 317778-01-XXX
RIVET-POP-AL 3/16X.063-.252
113133-01-CHT (4)
SCREW
000G39-10-16U (5)
CLIP-TRIM
130034-04-CHT
SCREW
000G39-10-16U (4)



VIEW AA
(TV NOT SHOWN) 09A

- BRACKET-MOUNTING, TV
000033913 / 317676-01-CHT
SCREW
000G39-10-16U (4)
CLIP-TRIM
130034-01-CHT
SCREW
000G39-10-16U (4)



VIEW AA
(TV NOT SHOWN) 644

- BRACKET-TV,
24" INSIGNIA
302723-01-CHT
SCREW
000G39-10-16U (3)
CLIP-TRIM
130034-10-CHT
SCREW
000G39-10-16U (5)

FOR ELECTRICAL
TORQUE
SPECIFICATIONS
SEE DWG NO.
128783-01-000

FOR ELECTRICAL
CALLOUTS
SEE DWG NO.
121339-01-000

- 68Y TV - MAIN
- 644 GREAT ALASKAN RENTAL PACKAGE
- 09A PREMIUM PACKAGE
- 265 CODES/STANDARDS-CSA/CMVSS
- 1B1 CODES/STANDARDS USA

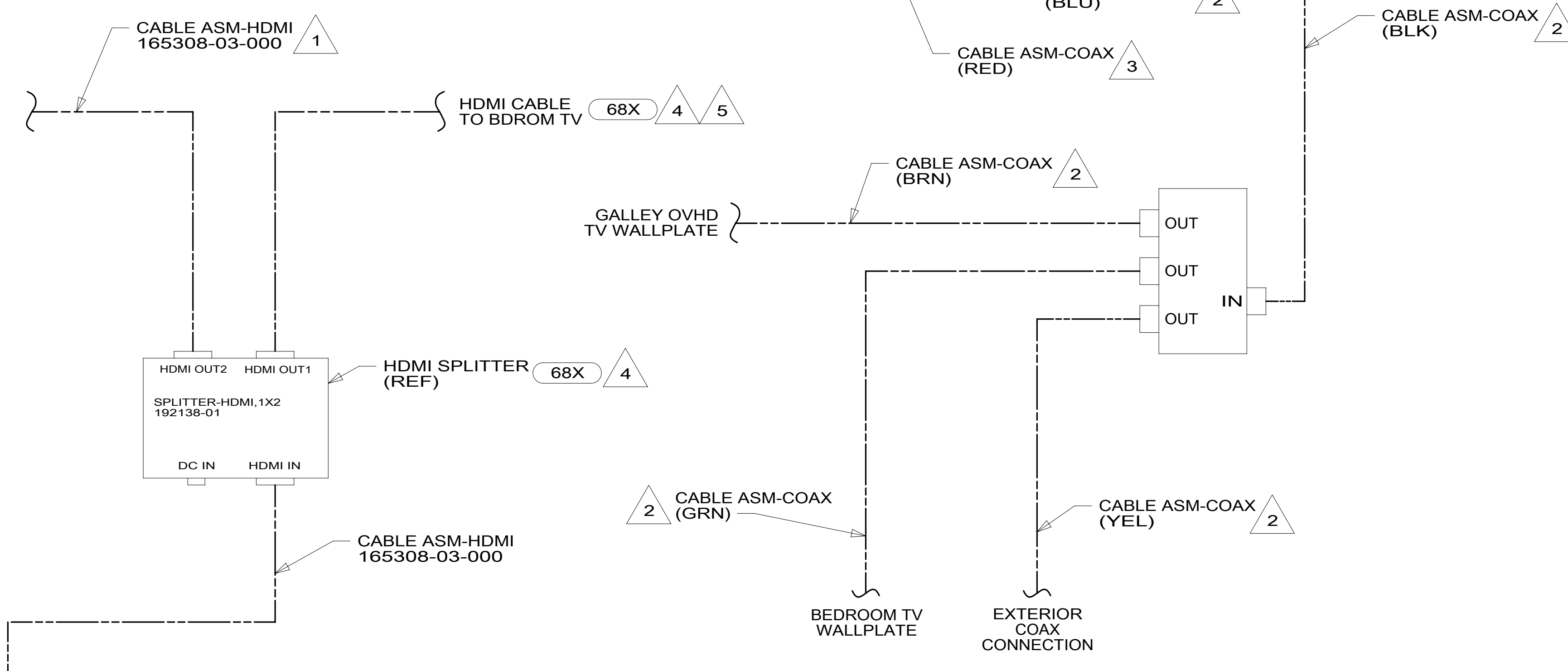
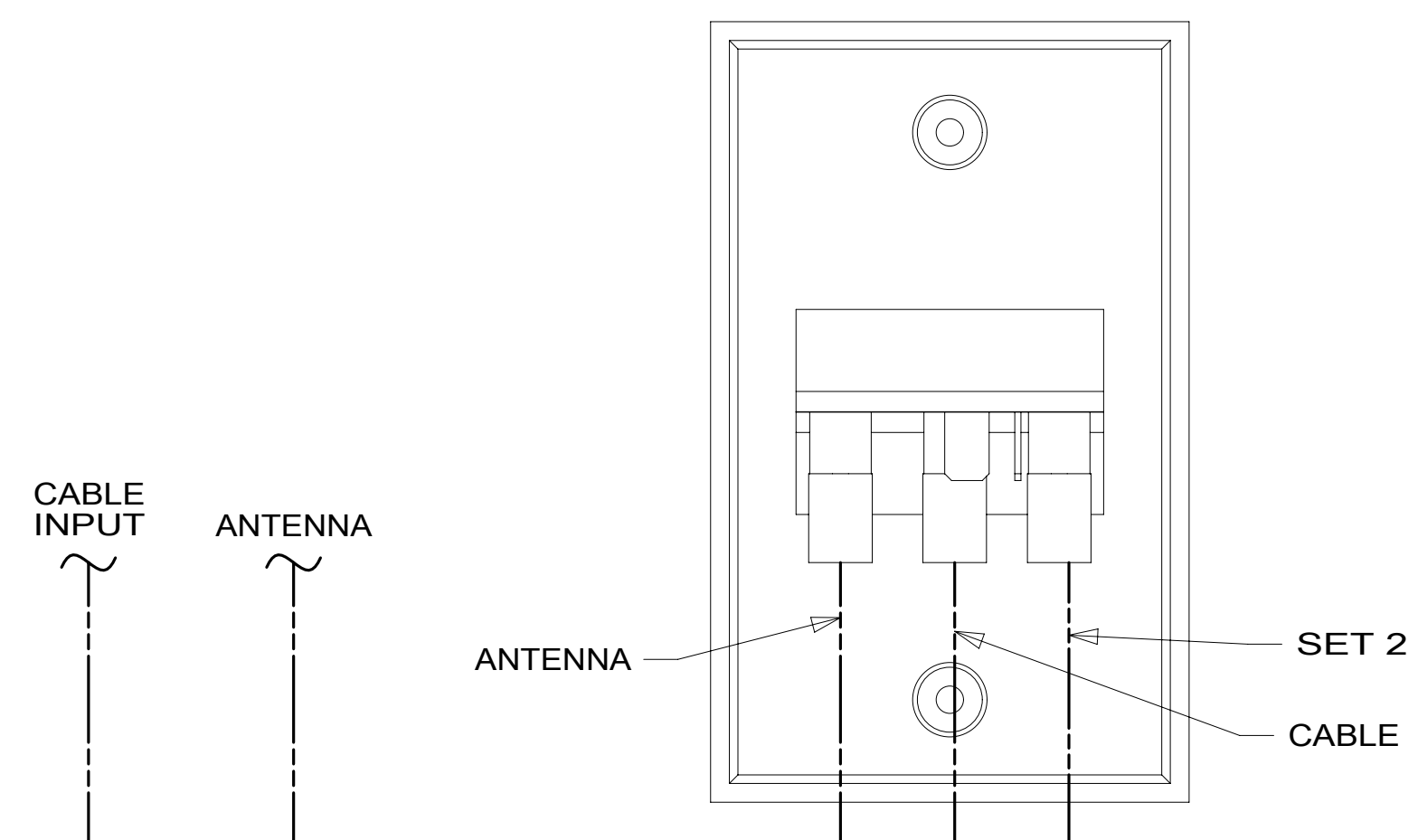
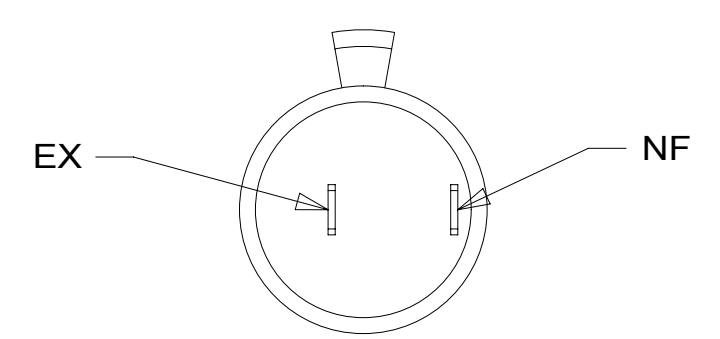
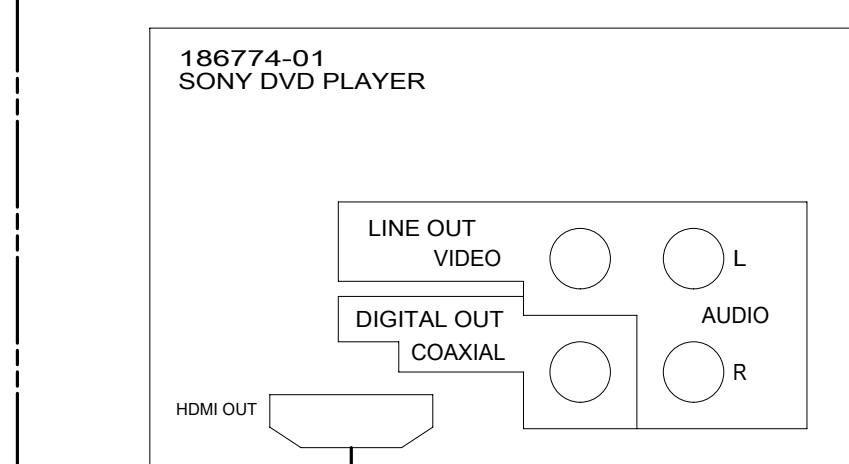
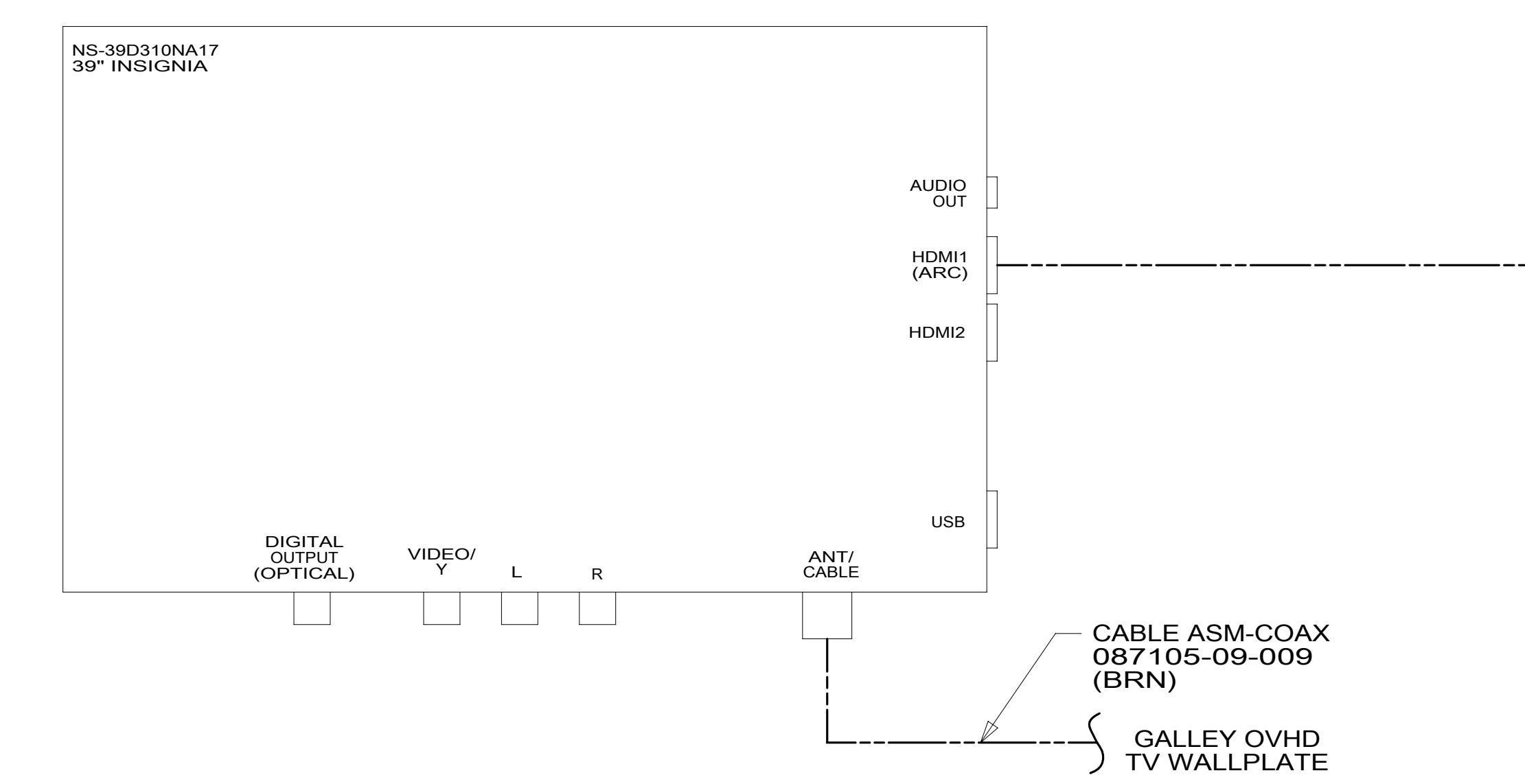
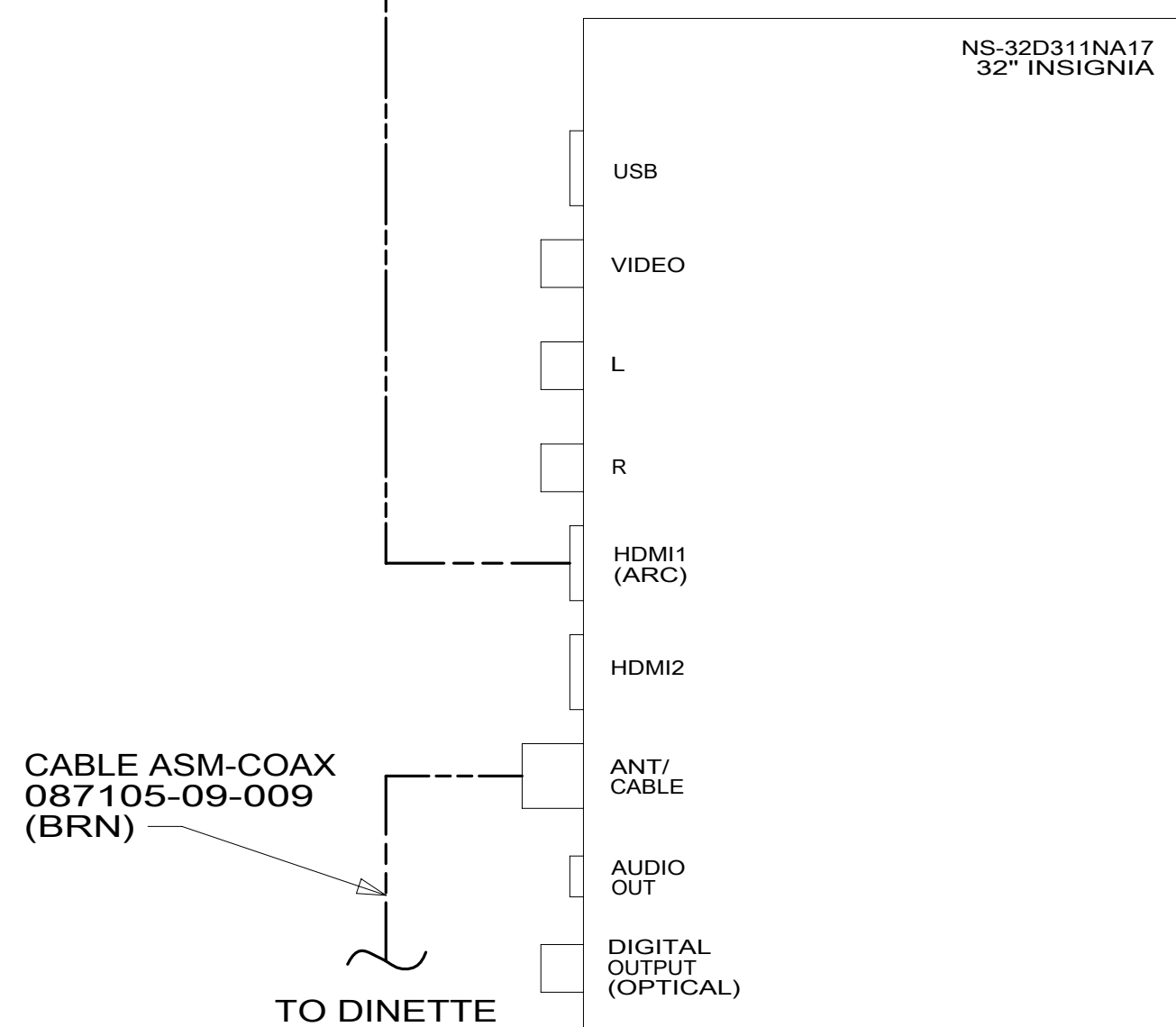
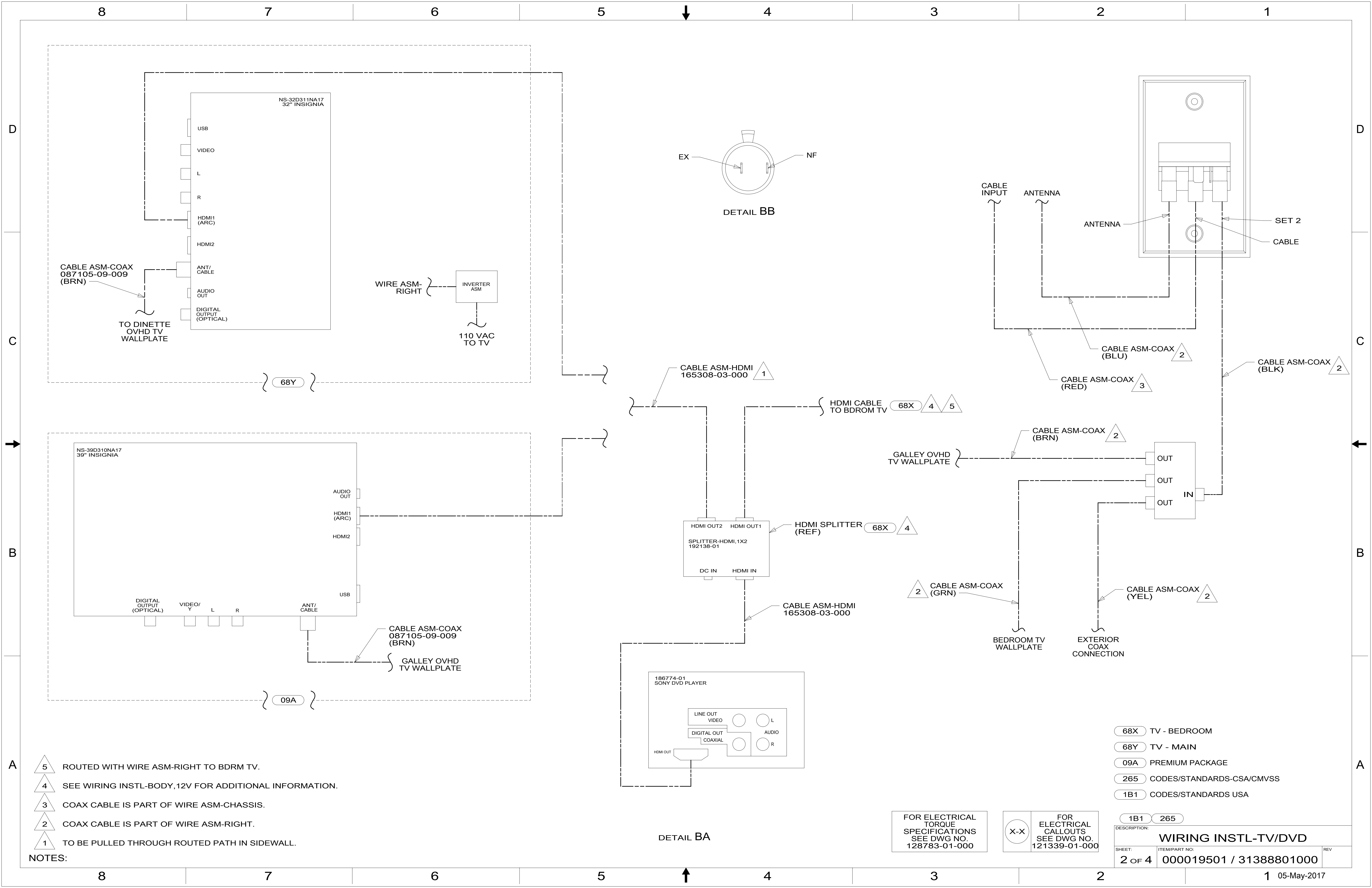
- 1B1 265



DSNR:		ALL DIMENSIONS ARE IN MILLIMETERS	
DIFFR:		MATERIAL:	
UNSPECIFIED TOLERANCES:			
WHOLE DIM (X)	: 3		
ONE-PLACE (X.X)	: 1.5		
TWO-PLACE (X.XX)	: 0.50		
ANGLE	: 1°		
REFER TO ES0018 FOR FASTENER TIGHTENING GUIDELINES		WEIGHT: (LBS)	FIRST USED:
			17 331K
DESCRIPTION: WIRING INSTL-TV/DVD			
SHEET:	ITEM/PART NO.:	REV:	
1 OF 4	000019501 / 31388801000		

- NOTES:
- 4 PREP BOTH SURFACES WITH ADHESIVE-PROMOTER, 087211-01-000.
 - 3 TV BRACKET AND CLIP TO BE CENTERED ON OVHD CABT. MOUNT CLIP AT DIMENSION SHOWN TO TOP EDGE OF CLIP.
 - 2 SEE WIRING INSTL-BODY, 110V FOR ADDITIONAL INFORMATION.
 - 1 SEE WIRING INSTL-BODY, 12V FOR ADDITIONAL INFORMATION.

8 7 6 5 4 3 2 1 05-May-2017



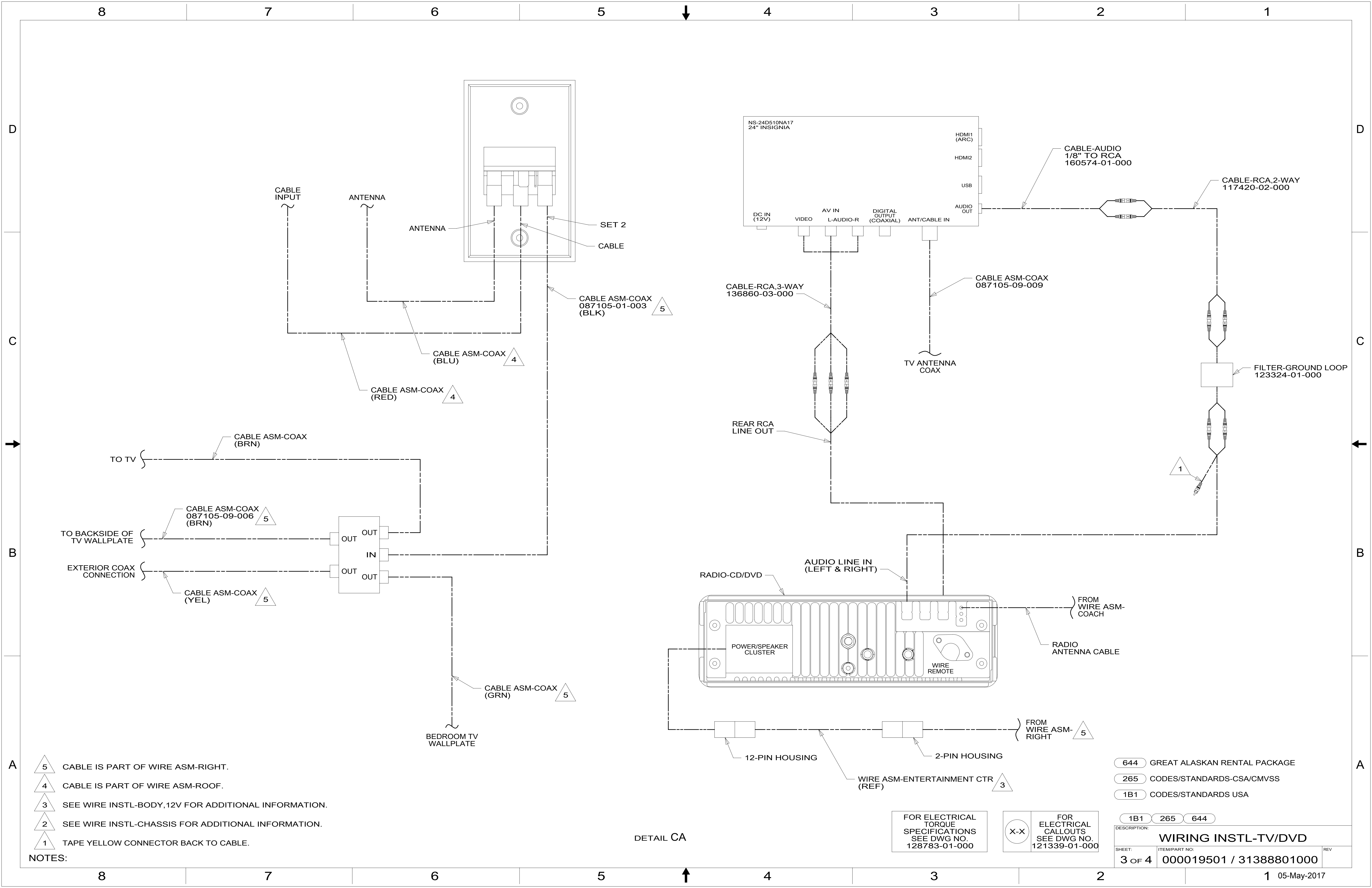
- NOTES:
- 5 ROUTED WITH WIRE ASM-RIGHT TO BDRM TV.
 - 4 SEE WIRING INSTL-BODY, 12V FOR ADDITIONAL INFORMATION.
 - 3 COAX CABLE IS PART OF WIRE ASM-CHASSIS.
 - 2 COAX CABLE IS PART OF WIRE ASM-RIGHT.
 - 1 TO BE PULLED THROUGH ROUTED PATH IN SIDEWALL.

FOR ELECTRICAL TORQUE SPECIFICATIONS SEE DWG NO. 128783-01-000

FOR ELECTRICAL CALLOUTS SEE DWG NO. 121339-01-000

- 68X TV - BEDROOM
- 68Y TV - MAIN
- 09A PREMIUM PACKAGE
- 265 CODES/STANDARDS-CSA/CMVSS
- 1B1 CODES/STANDARDS USA

DESCRIPTION: WIRING INSTL-TV/DVD	
SHEET: 2 OF 4	ITEM/PART NO: 000019501 / 31388801000
REV 1 05-May-2017	



- NOTES:
- 5 CABLE IS PART OF WIRE ASM-RIGHT.
 - 4 CABLE IS PART OF WIRE ASM-ROOF.
 - 3 SEE WIRE INSTL-BODY, 12V FOR ADDITIONAL INFORMATION.
 - 2 SEE WIRE INSTL-CHASSIS FOR ADDITIONAL INFORMATION.
 - 1 TAPE YELLOW CONNECTOR BACK TO CABLE.

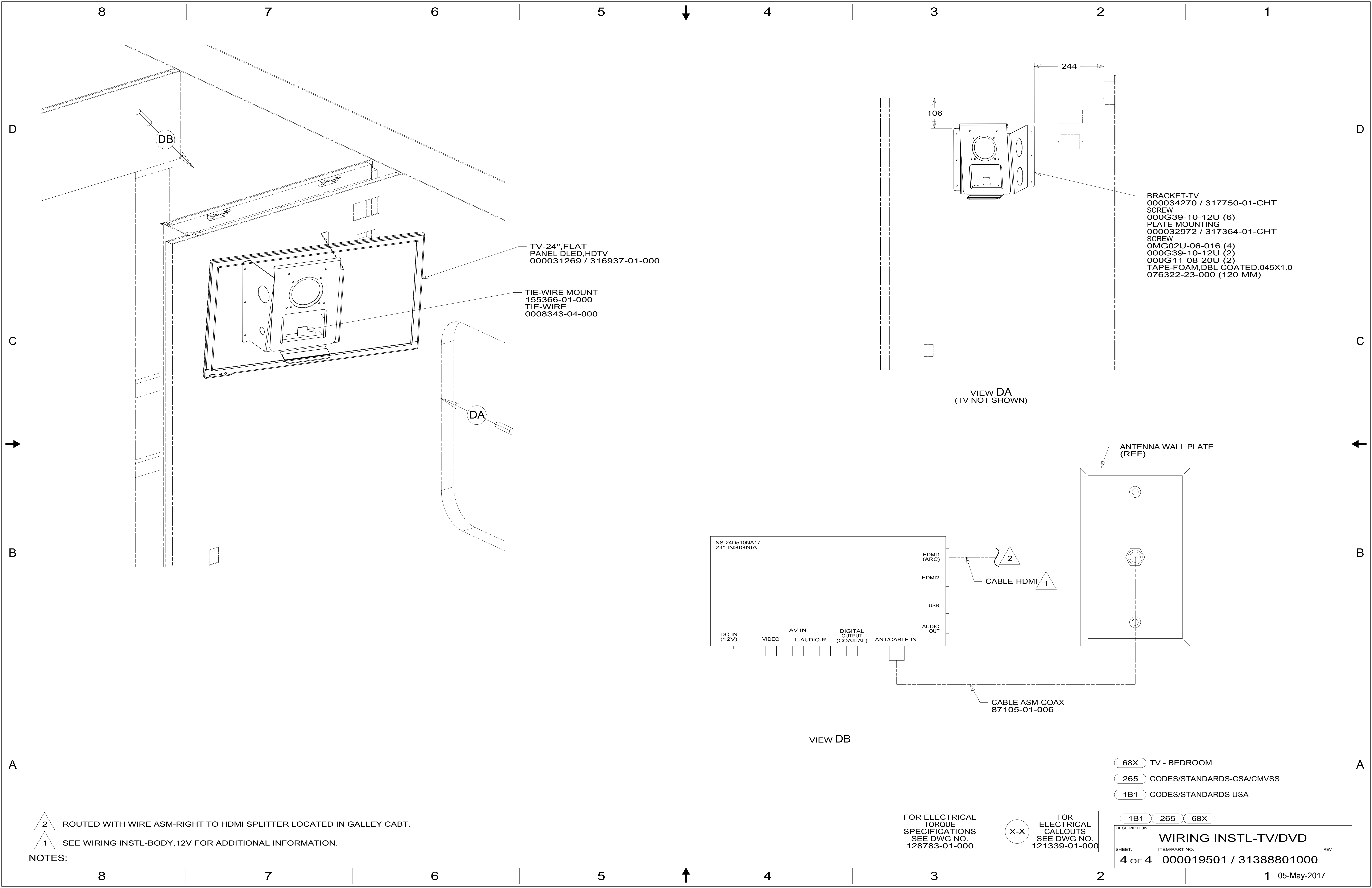
DETAIL CA

FOR ELECTRICAL TORQUE SPECIFICATIONS SEE DWG NO. 128783-01-000

FOR ELECTRICAL CALLOUTS SEE DWG NO. 121339-01-000

- 644 GREAT ALASKAN RENTAL PACKAGE
- 265 CODES/STANDARDS-CSA/CMVSS
- 1B1 CODES/STANDARDS USA

DESCRIPTION:	1B1 265 644	
WIRING INSTL-TV/DVD		
SHEET:	ITEM/PART NO:	REV
3 OF 4	000019501 / 31388801000	

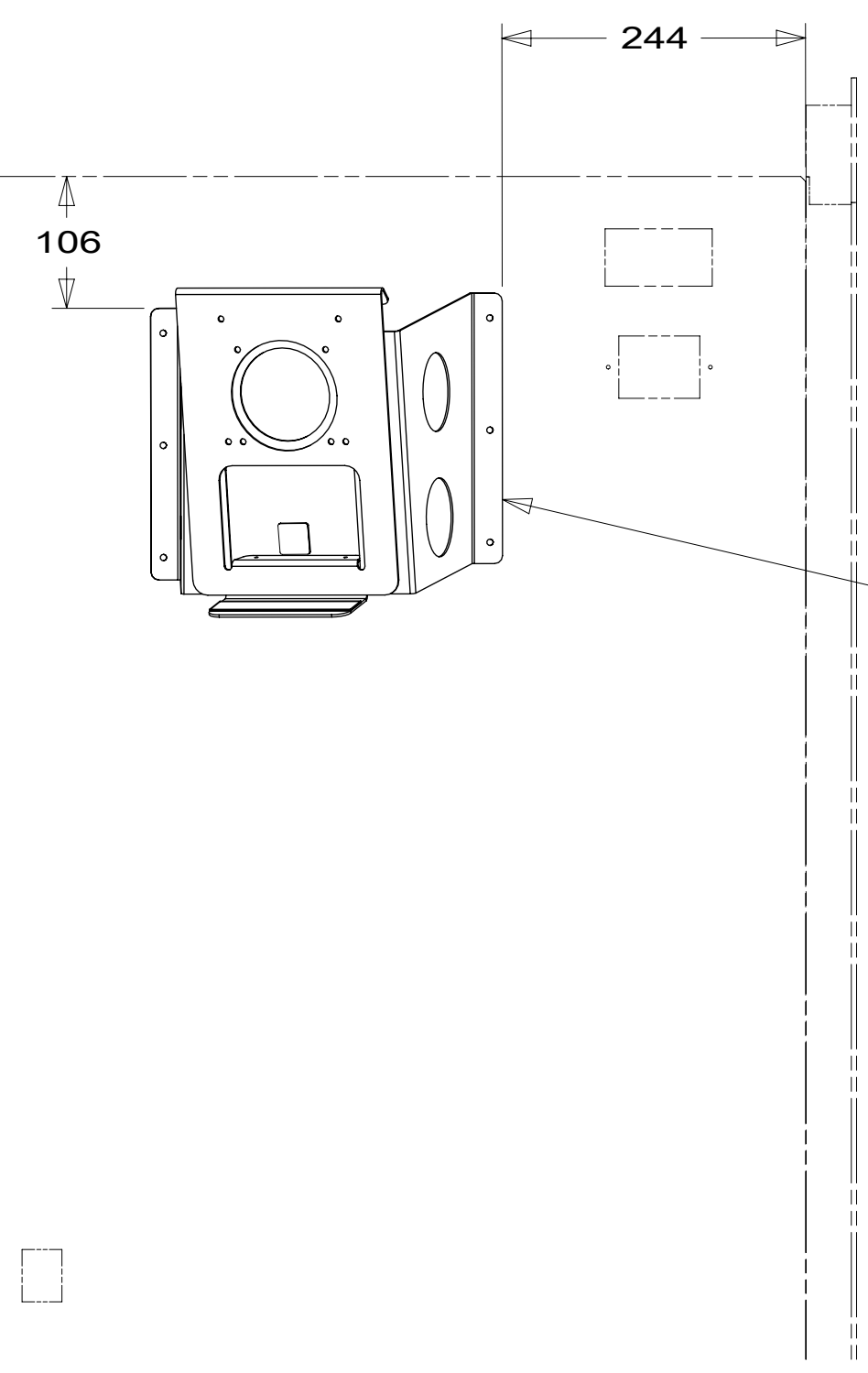


DB

DA

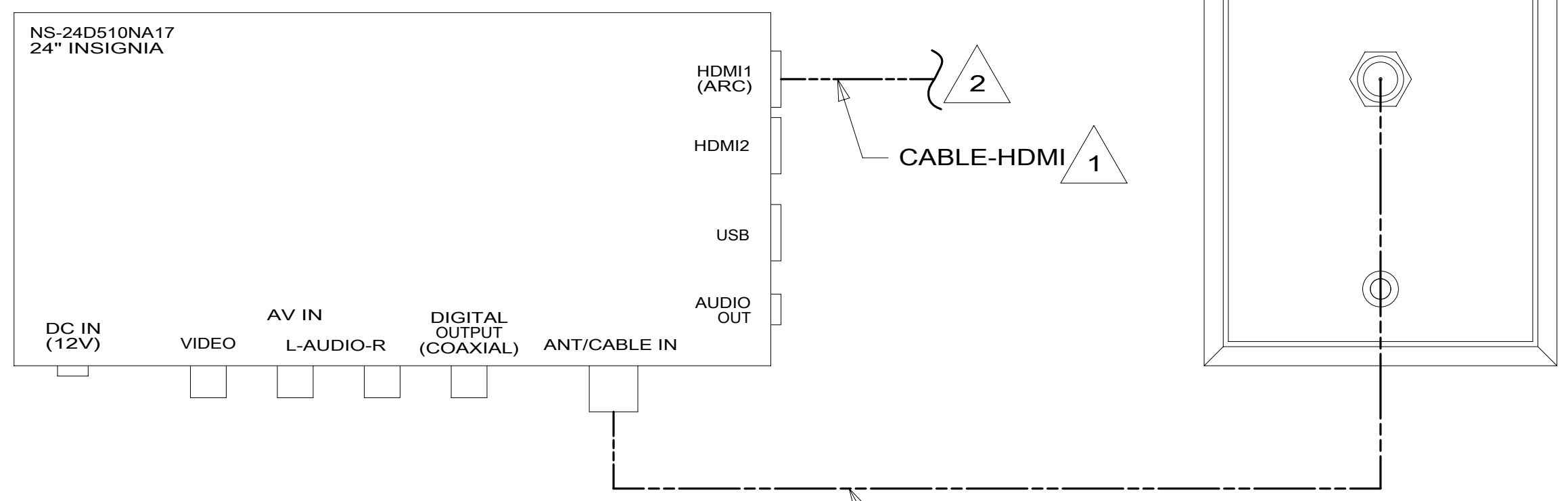
TV-24", FLAT
 PANEL DLED,HDTV
 000031269 / 316937-01-000

TIE-WIRE MOUNT
 155366-01-000
 TIE-WIRE
 0008343-04-000



VIEW DA
 (TV NOT SHOWN)

BRACKET-TV
 000034270 / 317750-01-CHT
 SCREW
 000G39-10-12U (6)
 PLATE-MOUNTING
 000032972 / 317364-01-CHT
 SCREW
 0MG02U-06-016 (4)
 000G39-10-12U (2)
 000G11-08-20U (2)
 TAPE-FOAM, DBL COATED, 045X1.0
 076322-23-000 (120 MM)



VIEW DB

- 68X TV - BEDROOM
- 265 CODES/STANDARDS-CSA/CMVSS
- 1B1 CODES/STANDARDS USA

2 ROUTED WITH WIRE ASM-RIGHT TO HDMI SPLITTER LOCATED IN GALLEY CABT.
 1 SEE WIRING INSTL-BODY, 12V FOR ADDITIONAL INFORMATION.

FOR ELECTRICAL TORQUE SPECIFICATIONS SEE DWG NO. 128783-01-000

X-X FOR ELECTRICAL CALLOUTS SEE DWG NO. 121339-01-000

DESCRIPTION: WIRING INSTL-TV/DVD		
SHEET: 4 OF 4	ITEM/PART NO: 000019501 / 31388801000	REV