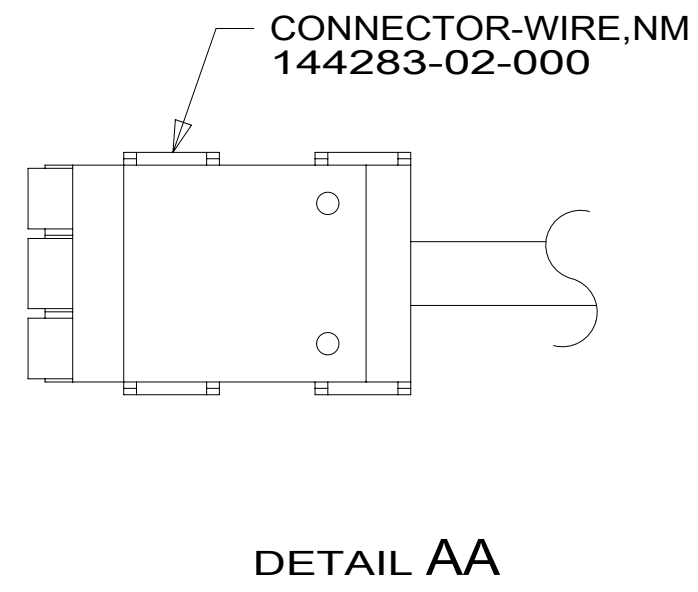


D
C
B
A

D
C
B
A

RED	1B1	136135-07-054	
	265	136136-07-054	
YEL	1B1	136131-05-042	
	265	136134-05-042	
BLK	1B1	136135-06-064	093
	265	136136-06-064	093
BLK	1B1	136135-06-035	09A
	265	136136-06-035	09A
BLK-2	1B1	136135-22-034	09A
	265	136136-22-034	09A
BRN	1B1	136131-03-123	
	265	136134-03-123	
BLU	1B1	136131-02-130	
	265	136134-02-130	
WHT	1B1	136135-09-049	09A
	265	136136-09-049	09A
THROW IN WIRE #1	1B1	136131-02-057	
	265	136134-02-057	
THROW IN WIRE #2	1B1	136131-003-062	
	265	136134-03-062	
THROW IN WIRE #3	1B1	136131-03-015	
	265	136134-03-015	
THROW IN WIRE #4	1B1	136131-03-003	4
	265	136134-03-003	4
THROW IN WIRE #5	1B1	136131-03-004	4
	265	136134-03-004	4
MAIN EXTENSION CABLE ASM	1B1	164957-13-050	
	265	164957-14-050	
GROUND MAIN		136145-02-018	



- 4 SEE DETAIL AA FOR CONNECTOR INSTALLATION.
3. SEE WIRING INSTL-BODY, 12V FOR ADDITIONAL INFORMATION.
2. SECURE WIRES TO BACKSIDE OF LOAD CENTER WITH WIRE TIE 116673-01-000.
1. ALL GROUND WIRES TO BE COVERED WITH TUBING 8041-02-000.

NOTES:

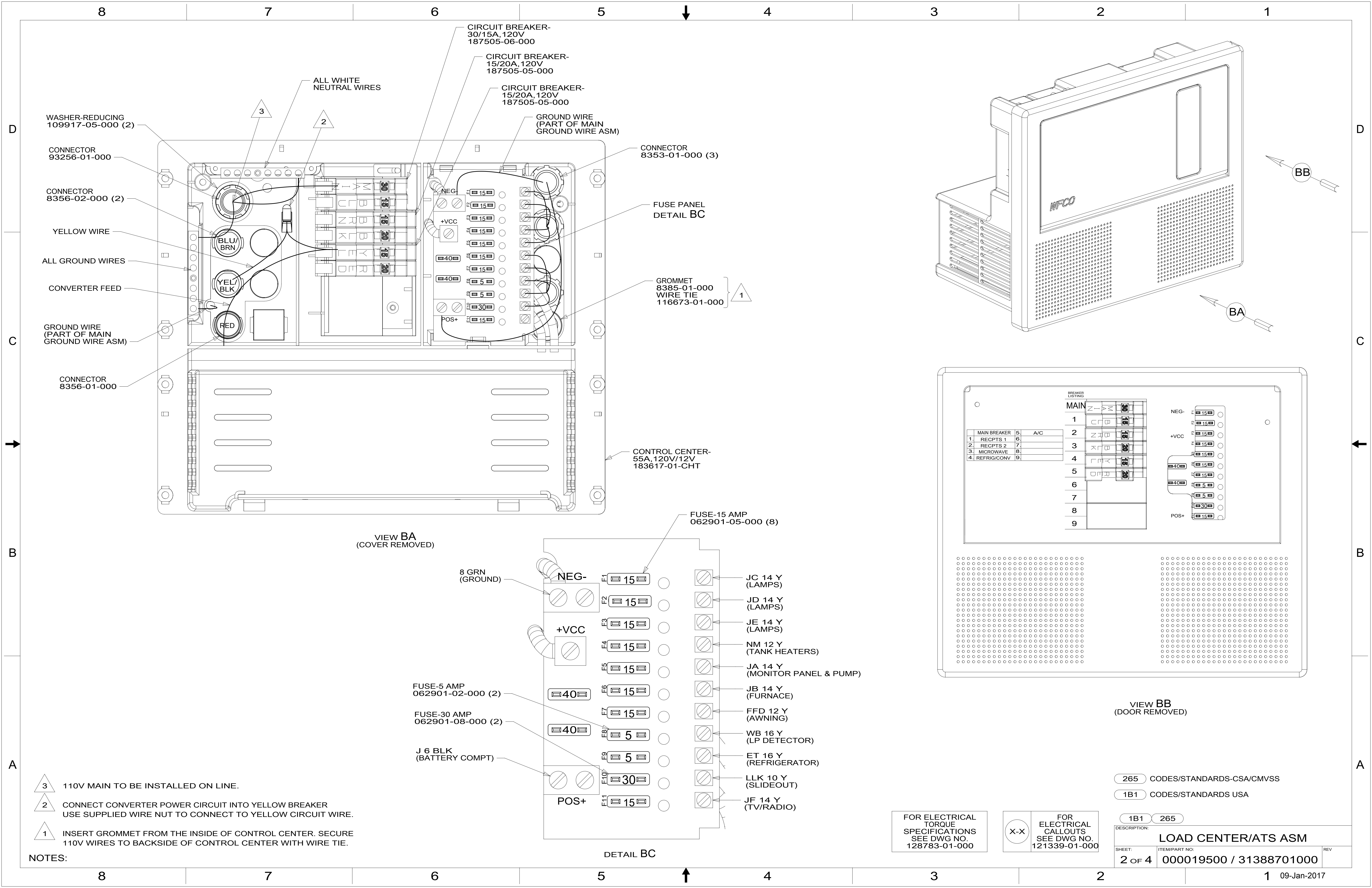
- 093 PREMIUM PACKAGE WITHOUT
- 09A PREMIUM PACKAGE
- 265 CODES/STANDARDS-CSA/CMVSS
- 1B1 CODES/STANDARDS USA

WINNEBAGO
COPYRIGHT 2016 WINNEBAGO INDUSTRIES, INC.

DSNR:	ALL DIMENSIONS ARE IN MILLIMETERS
DFFR:	
UNSPECIFIED TOLERANCES:	MATERIAL:
WHOLE DIM (X) : 3	
ONE-PLACE (X.X) : 1.5	
TWO-PLACE (X.XX) : 0.50	
ANGLE : 1°	
REFER TO ES0018 FOR FASTENER TIGHTENING GUIDELINES	WEIGHT: (LBS) FIRST USED: 17 331K
DESCRIPTION:	LOAD CENTER/ATS ASM
SHEET: 1 OF 4	ITEM/PART NO: 000019500 / 31388701000
REF:	1 09-Jan-2017

FOR ELECTRICAL TORQUE SPECIFICATIONS SEE DWG NO. 128783-01-000

FOR ELECTRICAL CALLOUTS SEE DWG NO. 121339-01-000



CIRCUIT BREAKER-
30/15A, 120V
187505-06-000

CIRCUIT BREAKER-
15/20A, 120V
187505-05-000

CIRCUIT BREAKER-
15/20A, 120V
187505-05-000

GROUND WIRE
(PART OF MAIN
GROUND WIRE ASM)

CONNECTOR
8353-01-000 (3)

FUSE PANEL
DETAIL BC

GROMMET
8385-01-000
WIRE TIE
116673-01-000

CONTROL CENTER-
55A, 120V/12V
183617-01-CHT

FUSE-15 AMP
062901-05-000 (8)

VIEW BA
(COVER REMOVED)

8 GRN
(GROUND)

NEG-

+VCC

FUSE-5 AMP
062901-02-000 (2)

FUSE-30 AMP
062901-08-000 (2)

J 6 BLK
(BATTERY COMPT)

POS+

JC 14 Y
(LAMPS)

JD 14 Y
(LAMPS)

JE 14 Y
(LAMPS)

NM 12 Y
(TANK HEATERS)

JA 14 Y
(MONITOR PANEL & PUMP)

JB 14 Y
(FURNACE)

FFD 12 Y
(AWNING)

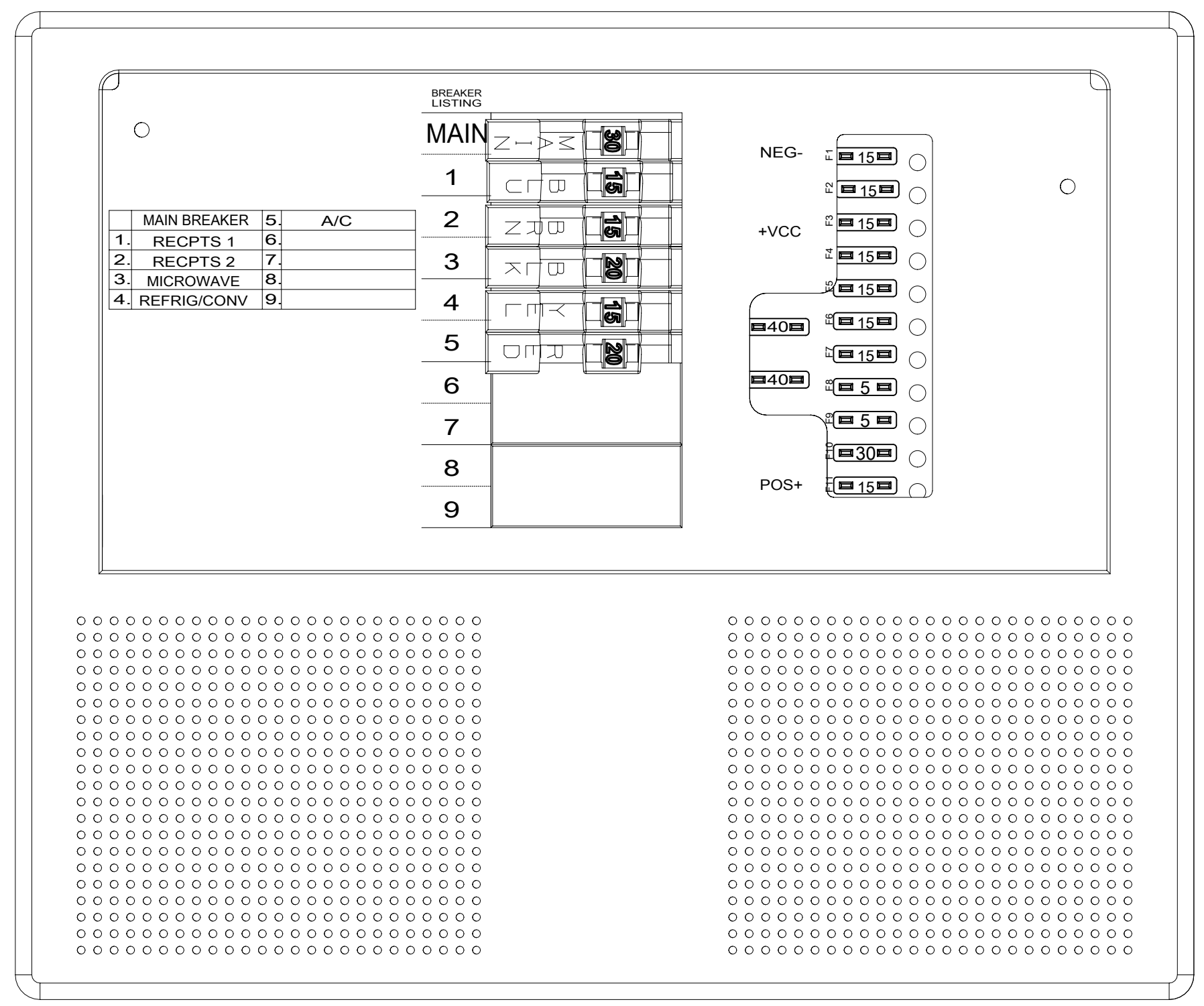
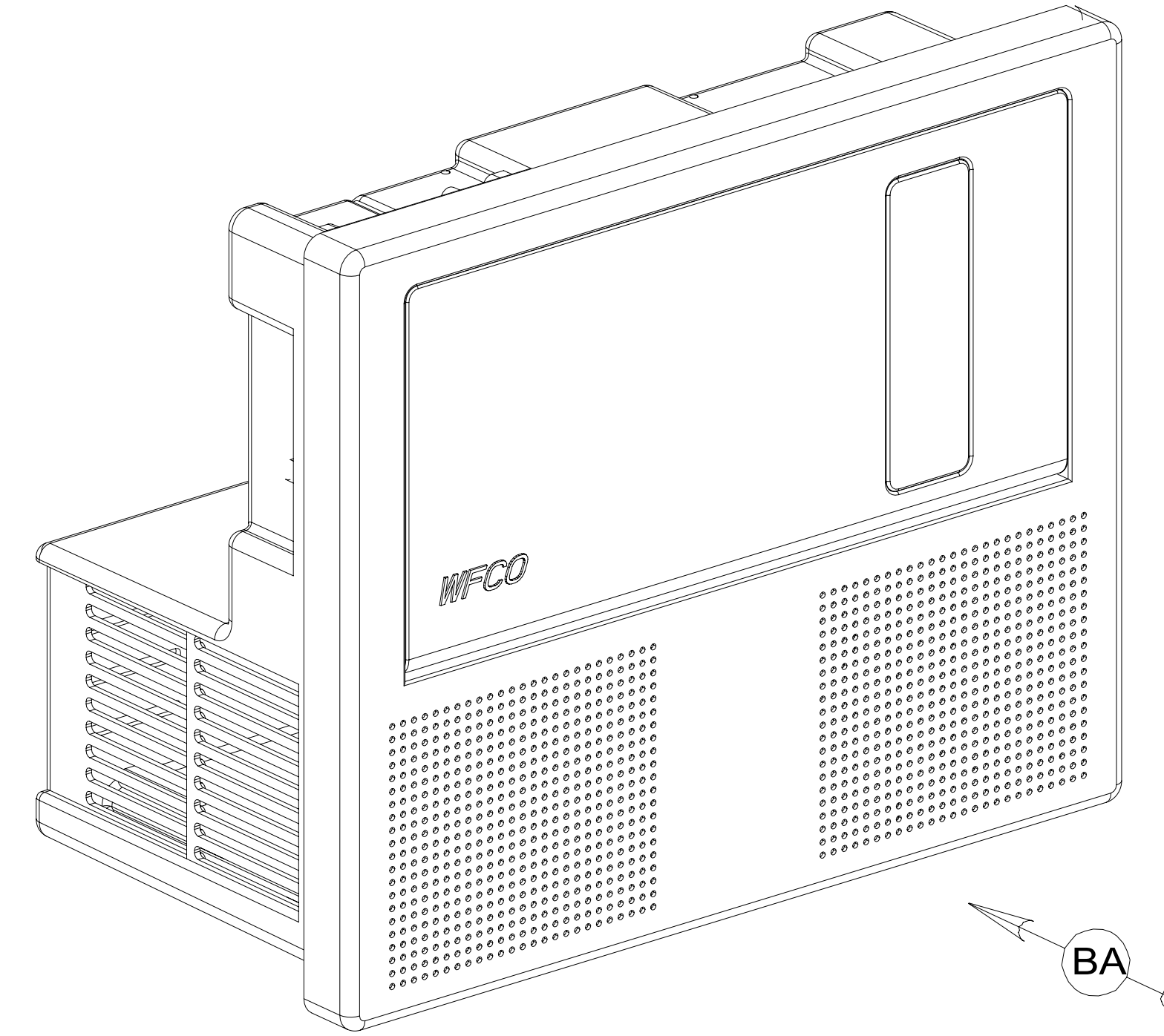
WB 16 Y
(LP DETECTOR)

ET 16 Y
(REFRIGERATOR)

LLK 10 Y
(SLIDEOUT)

JF 14 Y
(TV/RADIO)

DETAIL BC



- NOTES:
- 3 110V MAIN TO BE INSTALLED ON LINE.
 - 2 CONNECT CONVERTER POWER CIRCUIT INTO YELLOW BREAKER USE SUPPLIED WIRE NUT TO CONNECT TO YELLOW CIRCUIT WIRE.
 - 1 INSERT GROMMET FROM THE INSIDE OF CONTROL CENTER. SECURE 110V WIRES TO BACKSIDE OF CONTROL CENTER WITH WIRE TIE.

FOR ELECTRICAL
TORQUE
SPECIFICATIONS
SEE DWG NO.
128783-01-000

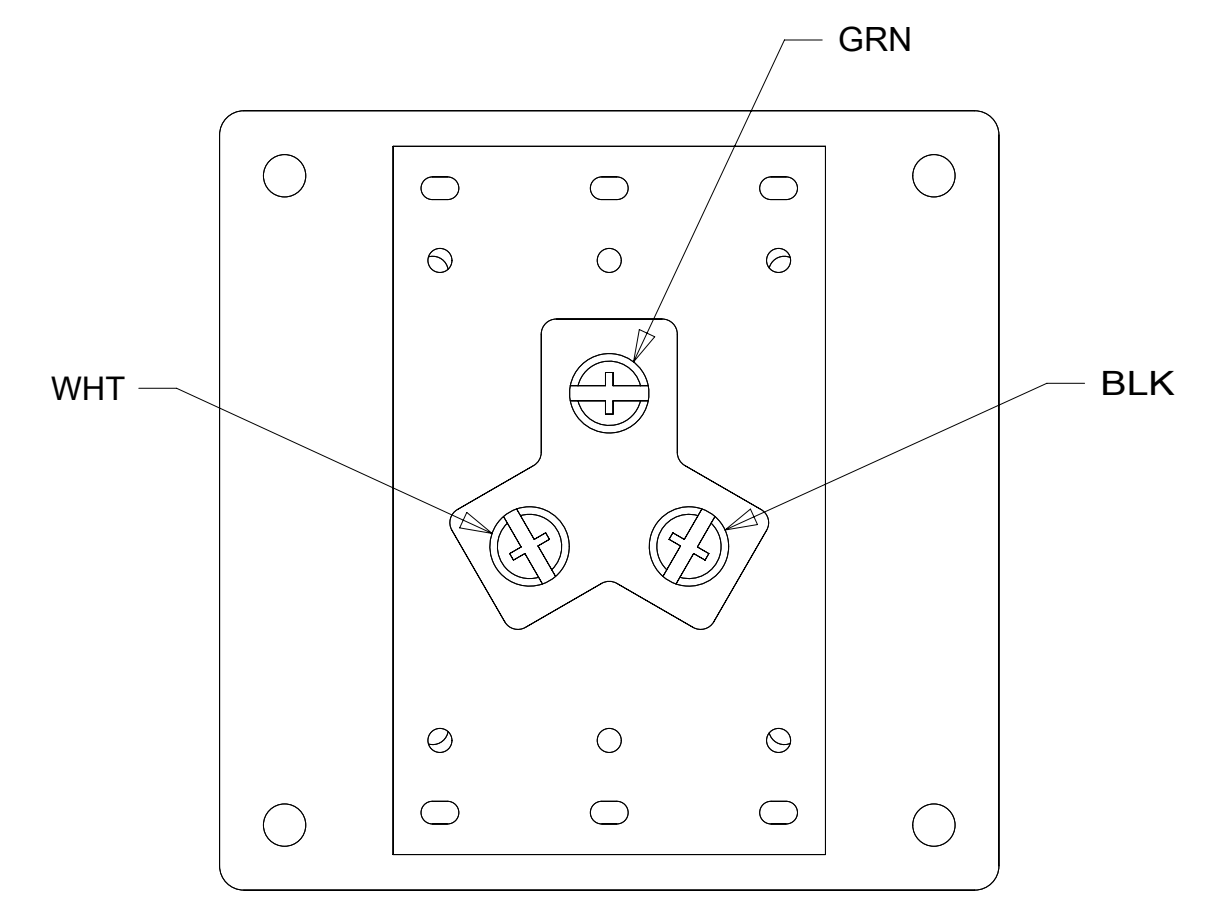
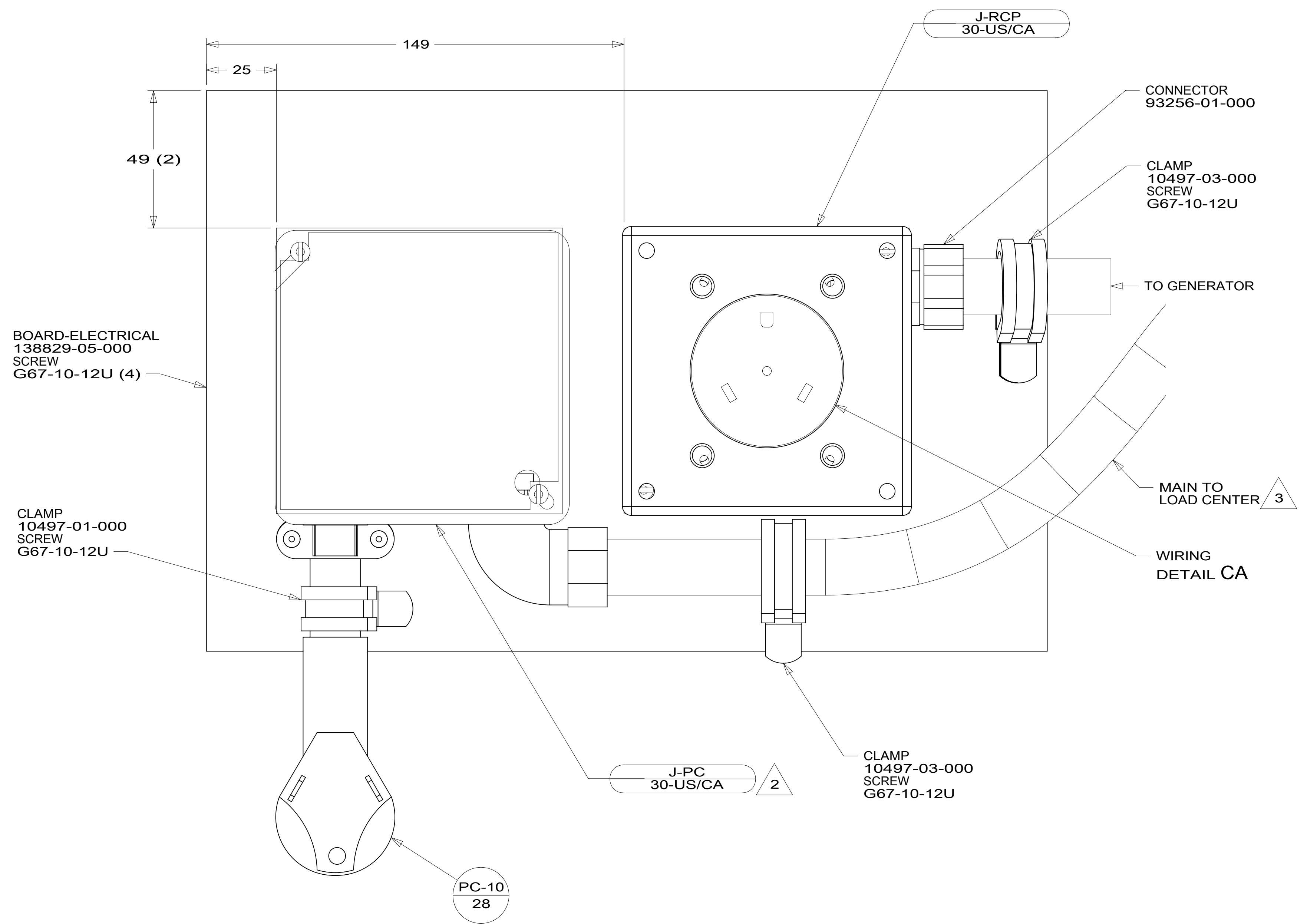
FOR ELECTRICAL
CALLOUTS
SEE DWG NO.
121339-01-000

- 265 CODES/STANDARDS-CSA/CMVSS
- 1B1 CODES/STANDARDS USA

DESCRIPTION: LOAD CENTER/ATS ASM	
SHEET: 2 OF 4	ITEM/PART NO: 000019500 / 31388701000
REV 09-Jan-2017	

8 7 6 5 4 3 2 1

D
C
B
A



3 SEE WIRING INSTL-BODY, 110V FOR ADDITIONAL INFORMATION.

2 CONNECT BLK TO BLK, WHT TO WHT, AND GRNDS TO GRNDS.

1. ALL GROUND WIRES TO BE COVERED WITH TUBING 8041-02-000.

NOTES:

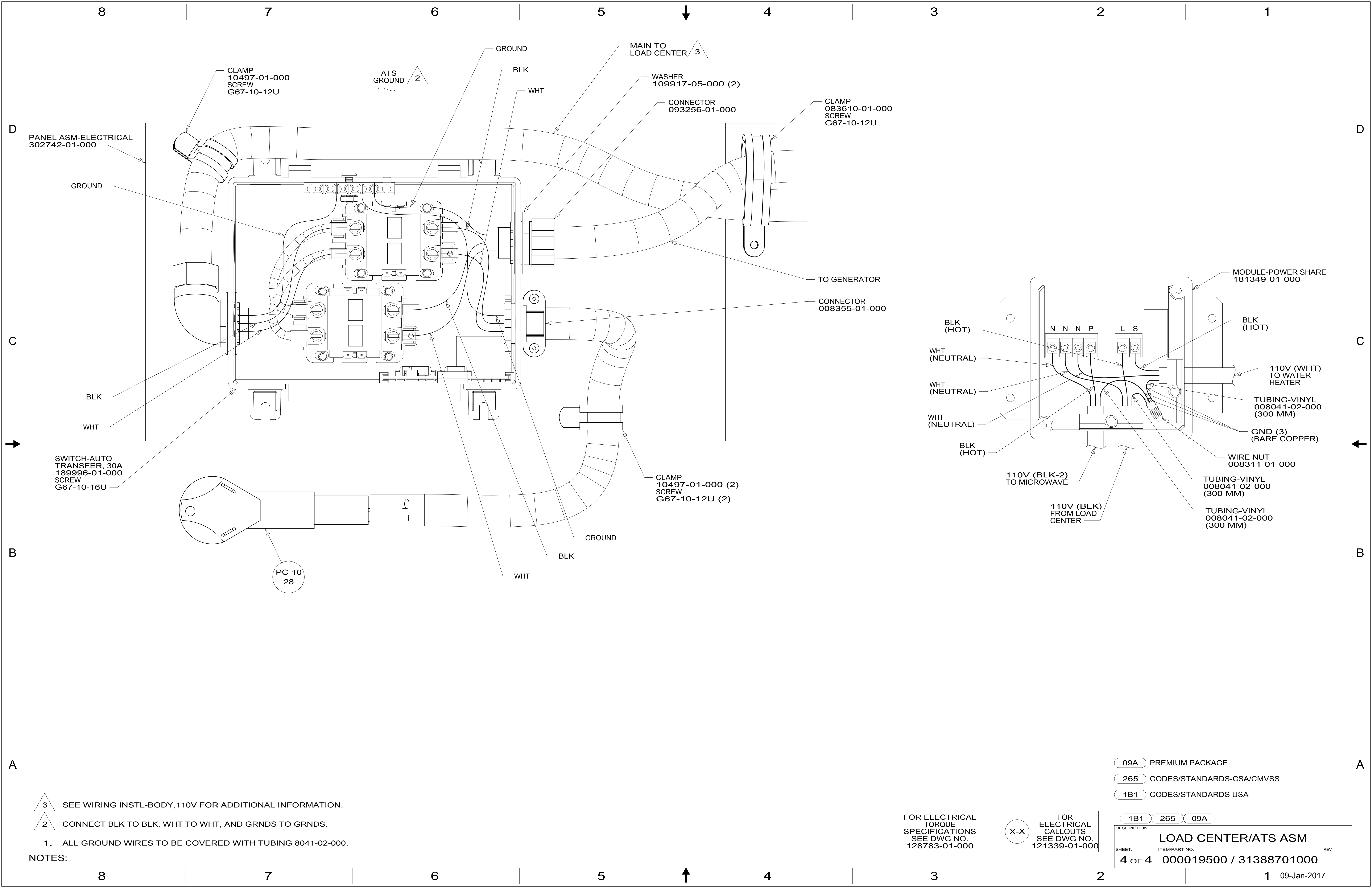
FOR ELECTRICAL
TORQUE
SPECIFICATIONS
SEE DWG NO.
128783-01-000

FOR ELECTRICAL
CALLOUTS
SEE DWG NO.
121339-01-000

- 093 PREMIUM PACKAGE WITHOUT
- 265 CODES/STANDARDS-CSA/CMVSS
- 1B1 CODES/STANDARDS USA

DESCRIPTION: LOAD CENTER/ATS ASM		
SHEET: 3 OF 4	ITEM/PART NO: 000019500 / 31388701000	REV

8 7 6 5 4 3 2 1 09-Jan-2017



CLAMP
10497-01-000
SCREW
G67-10-12U

ATS
GROUND 2

GROUND
MAIN TO
LOAD CENTER 3

WASHER
109917-05-000 (2)

CONNECTOR
093256-01-000

CLAMP
083610-01-000
SCREW
G67-10-12U

PANEL ASM-ELECTRICAL
302742-01-000

GROUND

TO GENERATOR

CONNECTOR
008355-01-000

BLK

WHT

SWITCH-AUTO
TRANSFER, 30A
189996-01-000
SCREW
G67-10-16U

PC-10
28

CLAMP
10497-01-000 (2)
SCREW
G67-10-12U (2)

GROUND

BLK

WHT

MODULE-POWER SHARE
181349-01-000

BLK
(HOT)

WHT
(NEUTRAL)

WHT
(NEUTRAL)

WHT
(NEUTRAL)

BLK
(HOT)

110V (BLK-2)
TO MICROWAVE

110V (BLK)
FROM LOAD
CENTER

BLK
(HOT)

110V (WHT)
TO WATER
HEATER

TUBING-VINYL
008041-02-000
(300 MM)

GND (3)
(BARE COPPER)

WIRE NUT
008311-01-000

TUBING-VINYL
008041-02-000
(300 MM)

TUBING-VINYL
008041-02-000
(300 MM)

3 SEE WIRING INSTL-BODY, 110V FOR ADDITIONAL INFORMATION.

2 CONNECT BLK TO BLK, WHT TO WHT, AND GRNDS TO GRNDS.

1. ALL GROUND WIRES TO BE COVERED WITH TUBING 8041-02-000.

NOTES:

FOR ELECTRICAL
TORQUE
SPECIFICATIONS
SEE DWG NO.
128783-01-000

FOR ELECTRICAL
CALLOUTS
SEE DWG NO.
121339-01-000

- 09A PREMIUM PACKAGE
- 265 CODES/STANDARDS-CSA/CMVSS
- 1B1 CODES/STANDARDS USA

DESCRIPTION: LOAD CENTER/ATS ASM		
SHEET: 4 OF 4	ITEM/PART NO.: 000019500 / 31388701000	REV