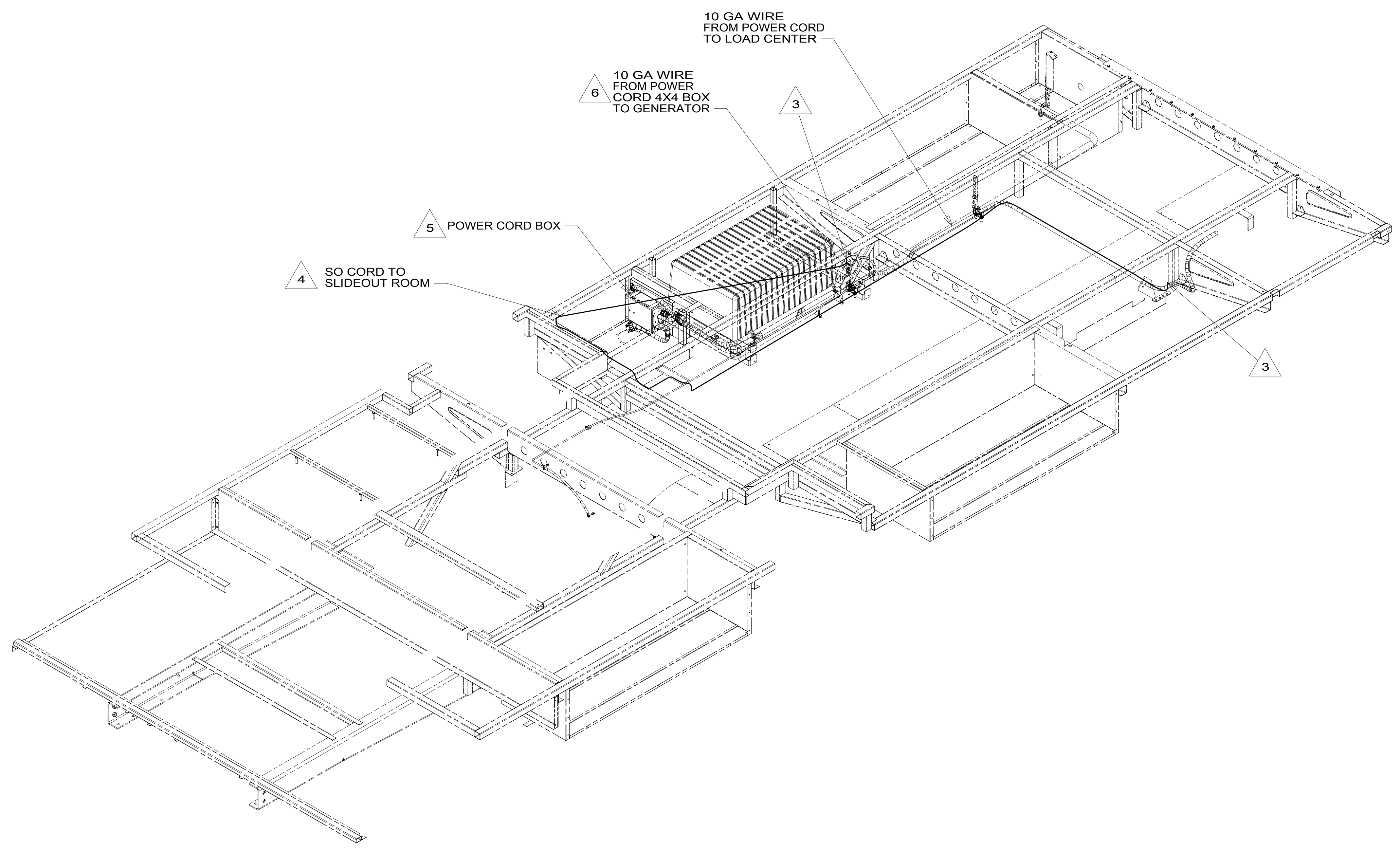


8 7 6 5 4 3 2 1

D

D



C

C

B

B

A

A

- △ 6 SEE GENERATOR INSTL FOR ADDITIONAL INFORMATION.
 - △ 5 SEE LOAD CENTER/ATS ASM FOR ADDITIONAL INFORMATION.
 - △ 4 CORD IS PART OF WIRE ASM-CHASSIS.
 - △ 3 ROUTE WIRE THRU FLOOR.
2. ALL 110V WIRE TO BE CLAMPED WITH CLAMP 10497-05-000 WITHIN 200MM OF OUTLET BOXES, USE SCREW G67-10-12B.
 1. AT MINIMUM ALL WIRES TO BE SUPPORTED AND SECURED PER CODE REQUIREMENTS. USE CLAMP 10495 OR 10497 OR WIRE TIE 8343 OR 108046 AND SCREW G67-XX-XXX OR G56-XX-XXX AS APPROPRIATE FOR INSTALLATION.

NOTES:

FOR ELECTRICAL TORQUE SPECIFICATIONS SEE DWG NO. 128783-01-000

FOR ELECTRICAL CALLOUTS SEE DWG NO. 121339-01-000

- 09A PREMIUM PACKAGE
- 12D ELECTRICAL SYSTEM 30 AMP
- 265 CODES/STANDARDS-CSA/CMVSS
- 1B1 CODES/STANDARDS USA

WINNEBAGO
COPYRIGHT 2016 WINNEBAGO INDUSTRIES, INC.

UNSPECIFIED TOLERANCES:		MATERIAL:	
WHOLE DIM (X)	: 3		
ONE-PLACE (X.X)	: 1.5		
TWO-PLACE (X.XX)	: 0.50		
ANGLE	: 1°		

REFER TO ES0018 FOR FASTENER TIGHTENING GUIDELINES

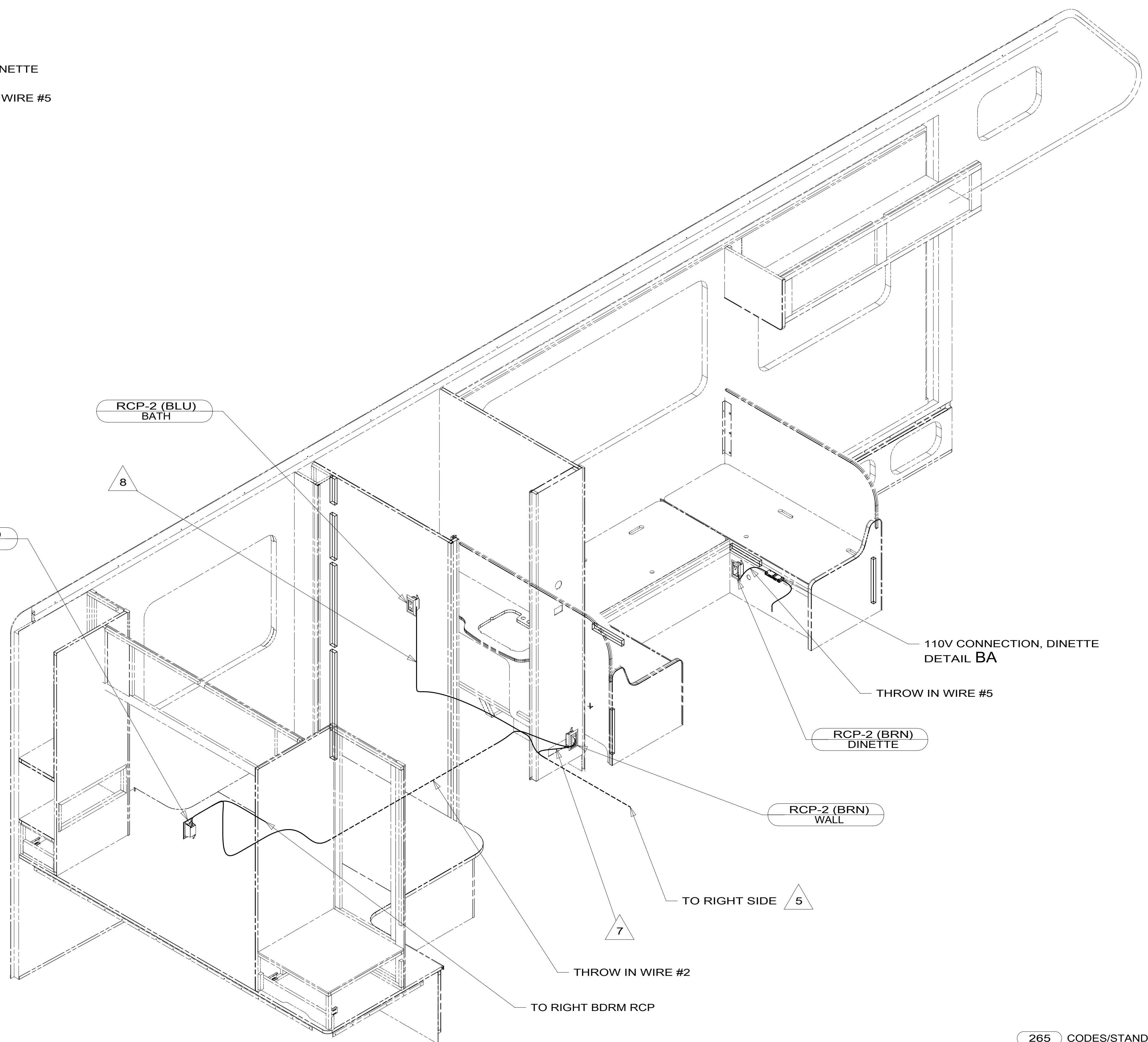
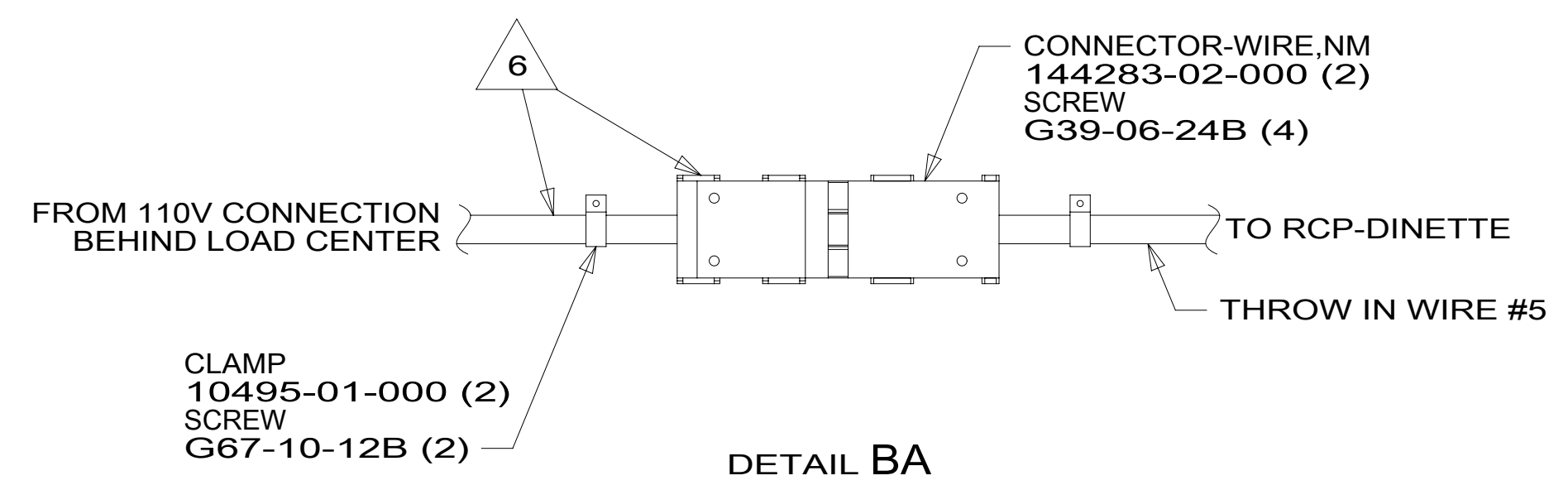
WEIGHT: (LBS) FIRST USED: **17 331K**

DESCRIPTION:
WIRING INSTL-BODY, 110V

SHEET:	ITEM/PART NO.:	REV:
1 OF 4	000019497 / 31388301000	

REF: 1 24-May-2017

8 7 6 5 4 3 2 1



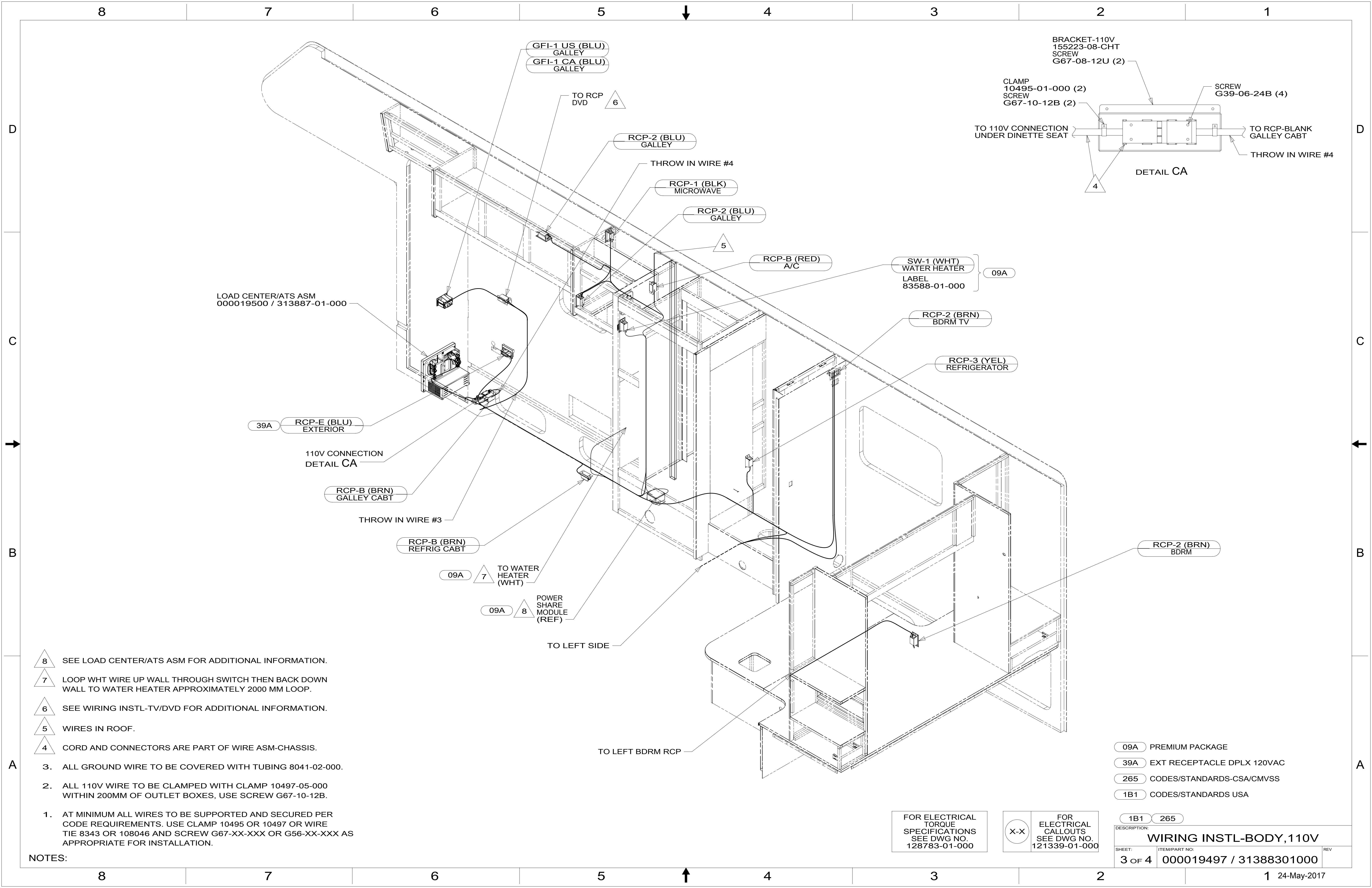
- NOTES:
- 8 LEAVE 1700 MM OF BLU CIRCUIT EXITING FROM FLOOR EXPOSED.
 - 7 LEAVE 600 MM OF BOTH BRN WIRES EXITING FROM FLOOR EXPOSED.
 - 6 CORD & CONNECTORS ARE PART OF WIRE ASM-CHASSIS.
 - 5 ROUTE WIRE THRU FLOOR.
 - 4. FOR MORE INFORMATION SEE WIRING DIAGRAM-BODY,110V.
 - 3. ALL GROUND WIRE TO BE COVERED WITH TUBING 8041-02-000.
 - 2. ALL 110V WIRE TO BE CLAMPED WITH CLAMP 10497-05-000 WITHIN 200MM OF OUTLET BOXES, USE SCREW G67-10-12B.
 - 1. AT MINIMUM ALL WIRES TO BE SUPPORTED AND SECURED PER CODE REQUIREMENTS. USE CLAMP 10495 OR 10497 OR WIRE TIE 8343 OR 108046 AND SCREW G67-XX-XXX OR G56-XX-XXX AS APPROPRIATE FOR INSTALLATION.

FOR ELECTRICAL TORQUE SPECIFICATIONS SEE DWG NO. 128783-01-000

FOR ELECTRICAL CALLOUTS SEE DWG NO. 121339-01-000

265 CODES/STANDARDS-CSA/CMVSS
 1B1 CODES/STANDARDS USA

DESCRIPTION:		1B1	265
WIRING INSTL-BODY, 110V			
SHEET:	ITEM/PART NO.:	REV	
2 OF 4	000019497 / 31388301000		



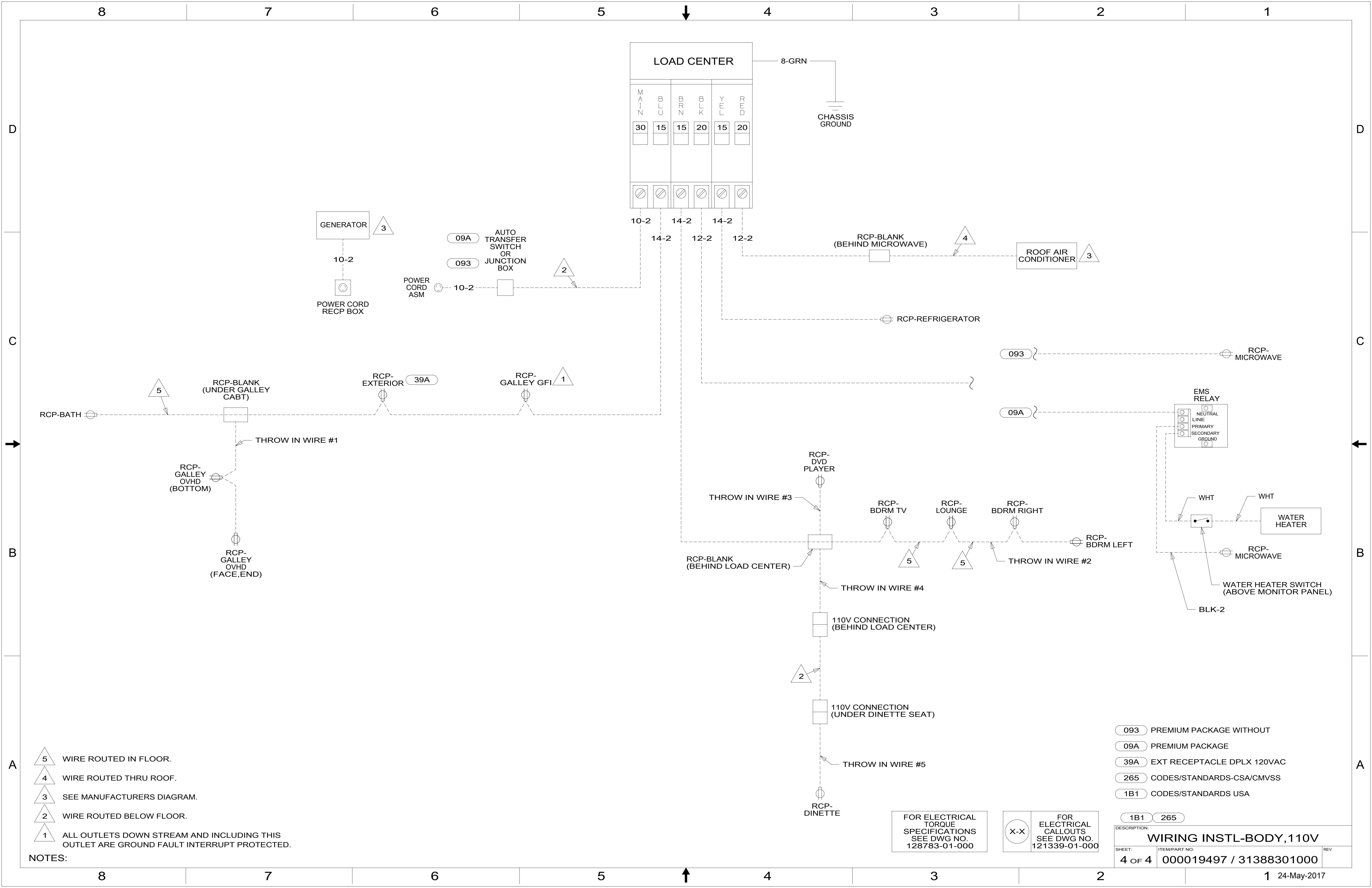
- NOTES:**
- 8 SEE LOAD CENTER/ATS ASM FOR ADDITIONAL INFORMATION.
 - 7 LOOP WHT WIRE UP WALL THROUGH SWITCH THEN BACK DOWN WALL TO WATER HEATER APPROXIMATELY 2000 MM LOOP.
 - 6 SEE WIRING INSTL-TV/DVD FOR ADDITIONAL INFORMATION.
 - 5 WIRES IN ROOF.
 - 4 CORD AND CONNECTORS ARE PART OF WIRE ASM-CHASSIS.
3. ALL GROUND WIRE TO BE COVERED WITH TUBING 8041-02-000.
 2. ALL 110V WIRE TO BE CLAMPED WITH CLAMP 10497-05-000 WITHIN 200MM OF OUTLET BOXES, USE SCREW G67-10-12B.
 1. AT MINIMUM ALL WIRES TO BE SUPPORTED AND SECURED PER CODE REQUIREMENTS. USE CLAMP 10495 OR 10497 OR WIRE TIE 8343 OR 108046 AND SCREW G67-XX-XXX OR G56-XX-XXX AS APPROPRIATE FOR INSTALLATION.

FOR ELECTRICAL TORQUE SPECIFICATIONS SEE DWG NO. 128783-01-000

FOR ELECTRICAL CALLOUTS SEE DWG NO. 121339-01-000

- 09A PREMIUM PACKAGE
- 39A EXT RECEPTACLE DPLX 120VAC
- 265 CODES/STANDARDS-CSA/CMVSS
- 1B1 CODES/STANDARDS USA

DESCRIPTION: WIRING INSTL-BODY, 110V		
SHEET: 3 OF 4	ITEM/PART NO: 000019497 / 31388301000	REV



- NOTES:
- 5 WIRE ROUTED IN FLOOR.
 - 4 WIRE ROUTED THRU ROOF.
 - 3 SEE MANUFACTURERS DIAGRAM.
 - 2 WIRE ROUTED BELOW FLOOR.
 - 1 ALL OUTLETS DOWN STREAM AND INCLUDING THIS OUTLET ARE GROUND FAULT INTERRUPT PROTECTED.

- 093 PREMIUM PACKAGE WITHOUT
- 09A PREMIUM PACKAGE
- 39A EXT RECEPTACLE DPLX 120VAC
- 265 CODES/STANDARDS-CSA/CMVSS
- 1B1 CODES/STANDARDS USA

FOR ELECTRICAL TORQUE SPECIFICATIONS SEE DWG NO. 128783-01-000

FOR ELECTRICAL CALLOUTS SEE DWG NO. 121339-01-000

DESCRIPTION: WIRING INSTL-BODY, 110V		
SHEET: 4 OF 4	ITEM/PART NO.: 000019497 / 31388301000	REV