

- 3 LOCATED IN STORAGE COMPARTMENT BELOW FLOOR.
- 2 SWITCH ON LAMP TO BE ORIENTED TO REAR OF CABINET.
1. AT MINIMUM ALL WIRES TO BE SUPPORTED AND SECURED PER CODE REQUIREMENTS. USE CLAMP 10495 OR 10497 OR WIRE TIE 8343 OR 108046 AND SCREW G67-XX-XXX OR G56-XX-XXX AS APPROPRIATE FOR INSTALLATION.

NOTES:

CONNECT YEL WIRE TO YEL & BLK WIRE TO WHT ON CO DETECTOR

WIRING DOWN TO LP GAS DETECTOR CONNECTION  
DETAIL AD

FOR ELECTRICAL TORQUE SPECIFICATIONS SEE DWG NO. 128783-01-000

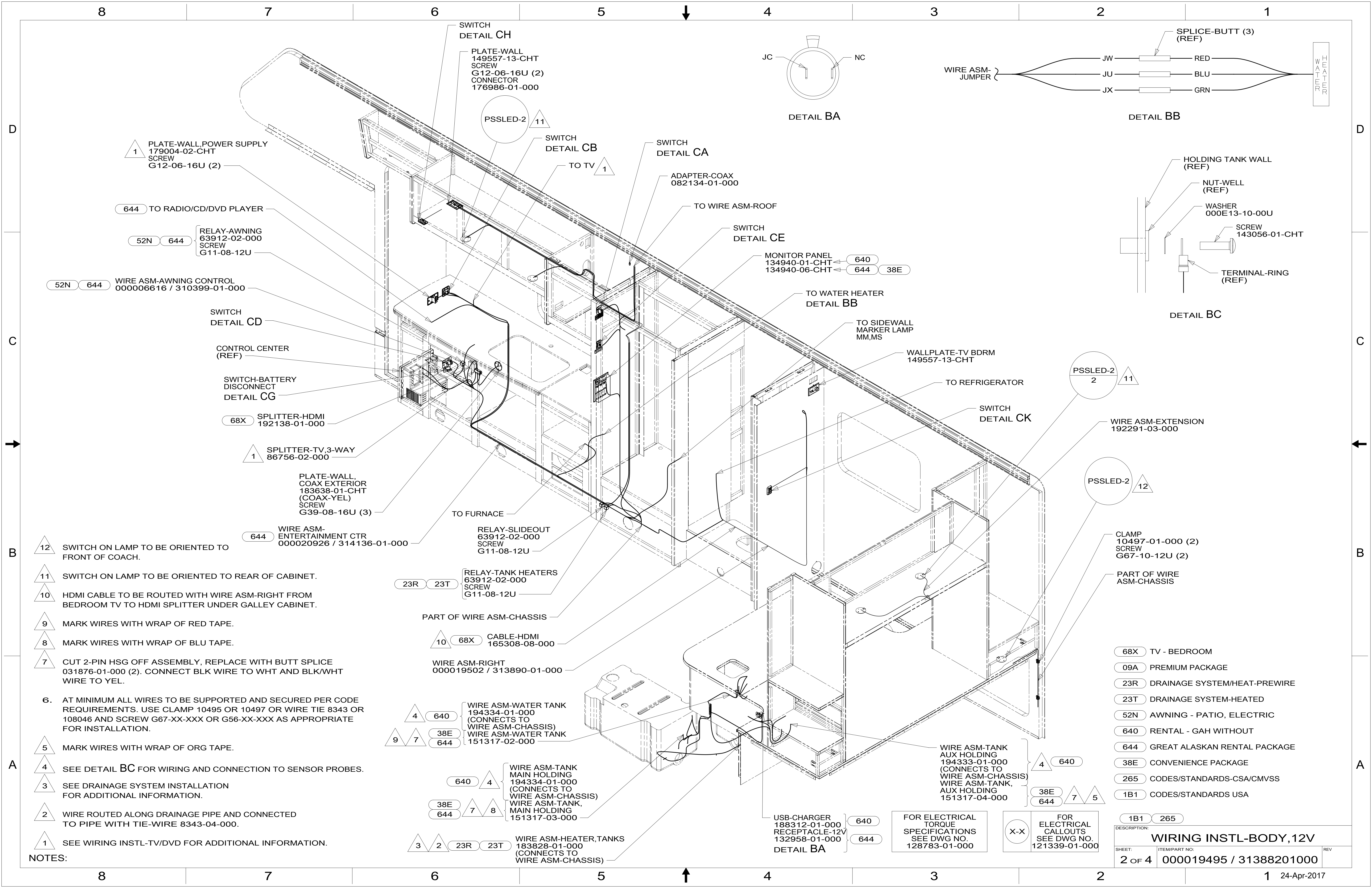
FOR ELECTRICAL CALLOUTS SEE DWG NO. 121339-01-000

DETAIL AC 644

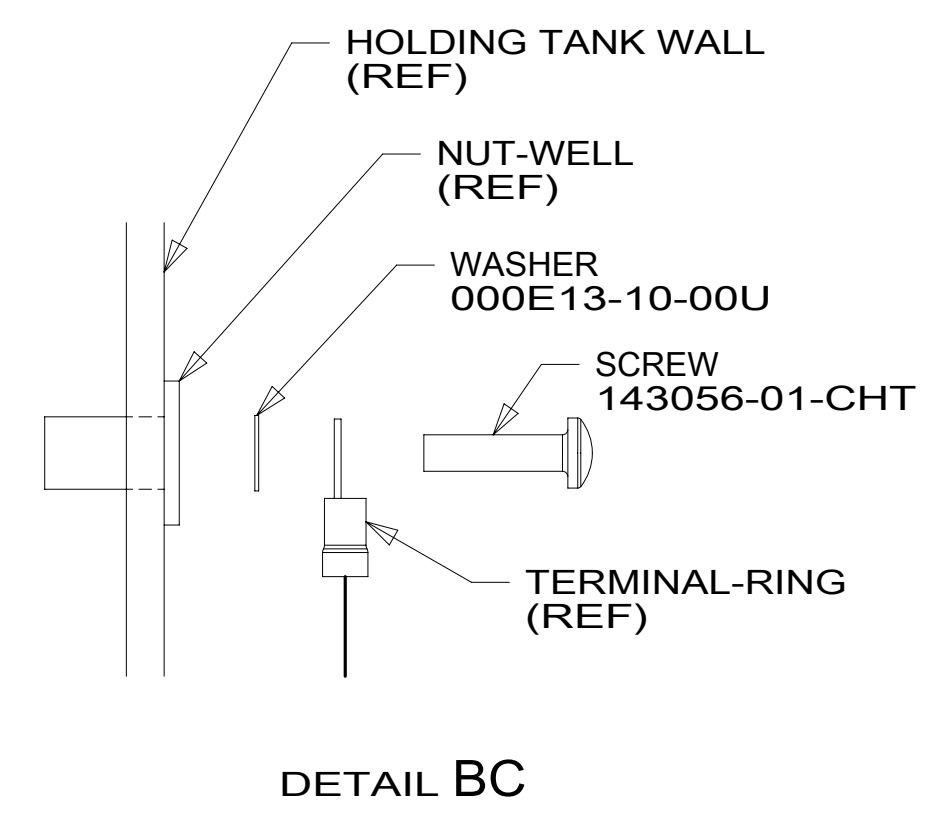
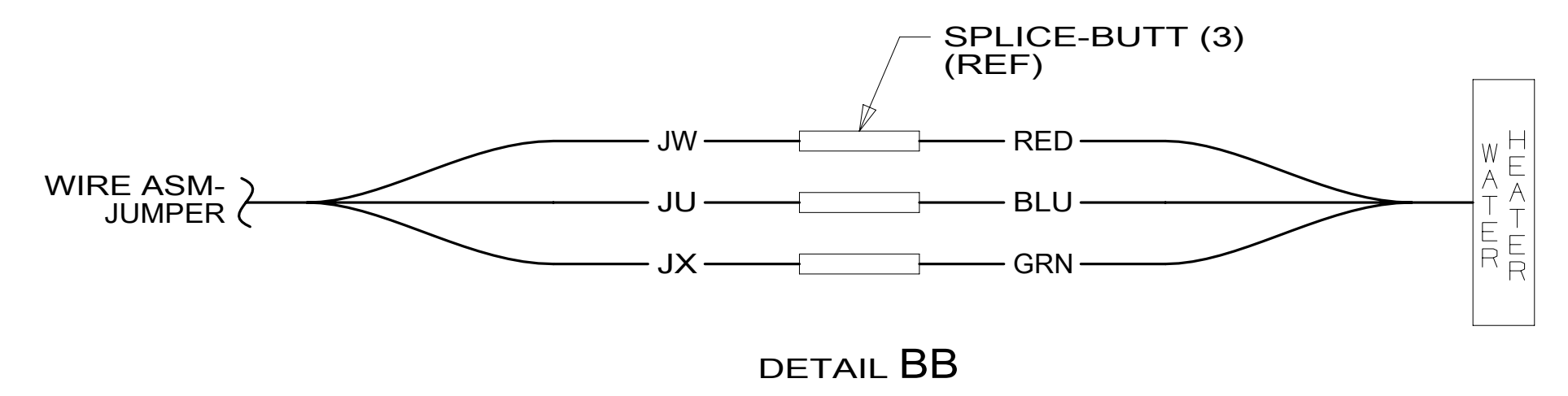
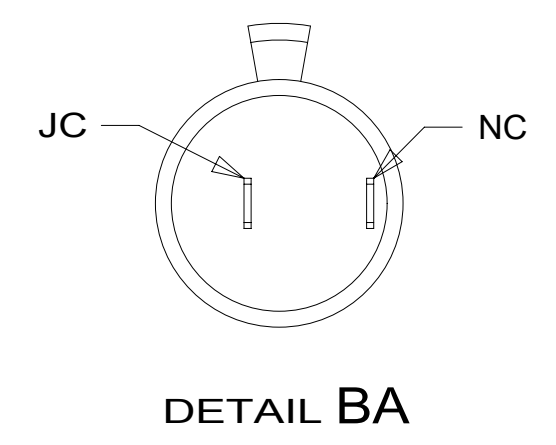
- 644 GREAT ALASKAN RENTAL PACKAGE
- 265 CODES/STANDARDS-CSA/CMVSS
- 1B1 CODES/STANDARDS USA



|  |                         |                                   |             |
|--|-------------------------|-----------------------------------|-------------|
| DSNR:  |                         | ALL DIMENSIONS ARE IN MILLIMETERS |             |
| DFFR:  |                         | MATERIAL:                         |             |
| UNSPECIFIED TOLERANCES:                            |                         | WEIGHT: (LBS)                     | FIRST USED: |
| WHOLE DIM (X)                                      | : 3                     |                                   | 17 331K     |
| ONE-PLACE (X.X)                                    | : 1.5                   |                                   |             |
| TWO-PLACE (X.XX)                                   | : 0.50                  |                                   |             |
| ANGLE  | : 1°                    |                                   |             |
| REFER TO ES0018 FOR FASTENER TIGHTENING GUIDELINES |                         |                                   |             |
| DESCRIPTION:<br><b>WIRING INSTL-BODY, 12V</b>      |                         |                                   |             |
| SHEET:   | ITEM/PART NO.:          | REV:                              |             |
| 1 OF 4   | 000019495 / 31388201000 |                                   |             |



SWITCH  
DETAIL CH  
PLATE-WALL  
149557-13-CHT  
SCREW  
G12-06-16U (2)  
CONNECTOR  
176986-01-000



1 PLATE-WALL,POWER SUPPLY  
179004-02-CHT  
SCREW  
G12-06-16U (2)

644 TO RADIO/CD/DVD PLAYER

52N 644 RELAY-AWNING  
63912-02-000  
SCREW  
G11-08-12U

52N 644 WIRE ASM-AWNING CONTROL  
000006616 / 310399-01-000

SWITCH  
DETAIL CD

CONTROL CENTER  
(REF)

SWITCH-BATTERY  
DISCONNECT  
DETAIL CG

68X SPLITTER-HDMI  
192138-01-000

1 SPLITTER-TV,3-WAY  
86756-02-000

PLATE-WALL,  
COAX EXTERIOR  
183638-01-CHT  
(COAX-YEL)  
SCREW  
G39-08-16U (3)

644 WIRE ASM-  
ENTERTAINMENT CTR  
000020926 / 314136-01-000

RELAY-SLIDEOUT  
63912-02-000  
SCREW  
G11-08-12U

23R 23T RELAY-TANK HEATERS  
63912-02-000  
SCREW  
G11-08-12U

PART OF WIRE ASM-CHASSIS

10 68X CABLE-HDMI  
165308-08-000

WIRE ASM-RIGHT  
000019502 / 313890-01-000

4 640 WIRE ASM-WATER TANK  
194334-01-000  
(CONNECTS TO  
WIRE ASM-CHASSIS)  
9 7 38E WIRE ASM-WATER TANK  
644 151317-02-000

640 4 WIRE ASM-TANK  
MAIN HOLDING  
194334-01-000  
(CONNECTS TO  
WIRE ASM-CHASSIS)  
38E 7 8 WIRE ASM-TANK,  
644 MAIN HOLDING  
151317-03-000

3 2 23R 23T WIRE ASM-HEATER,TANKS  
183828-01-000  
(CONNECTS TO  
WIRE ASM-CHASSIS)

USB-CHARGER  
188312-01-000 640  
RECEPTACLE-12V  
132958-01-000 644  
DETAIL BA

FOR ELECTRICAL  
TORQUE  
SPECIFICATIONS  
SEE DWG NO.  
128783-01-000

FOR  
ELECTRICAL  
CALLOUTS  
SEE DWG NO.  
121339-01-000

- 68X TV - BEDROOM
- 09A PREMIUM PACKAGE
- 23R DRAINAGE SYSTEM/HEAT-PREWIRE
- 23T DRAINAGE SYSTEM-HEATED
- 52N AWNING - PATIO, ELECTRIC
- 640 RENTAL - GAH WITHOUT
- 644 GREAT ALASKAN RENTAL PACKAGE
- 38E CONVENIENCE PACKAGE
- 265 CODES/STANDARDS-CSA/CMVSS
- 1B1 CODES/STANDARDS USA

- 12 SWITCH ON LAMP TO BE ORIENTED TO FRONT OF COACH.
- 11 SWITCH ON LAMP TO BE ORIENTED TO REAR OF CABINET.
- 10 HDMI CABLE TO BE ROUTED WITH WIRE ASM-RIGHT FROM BEDROOM TV TO HDMI SPLITTER UNDER GALLEY CABINET.
- 9 MARK WIRES WITH WRAP OF RED TAPE.
- 8 MARK WIRES WITH WRAP OF BLU TAPE.
- 7 CUT 2-PIN HSG OFF ASSEMBLY, REPLACE WITH BUTT SPLICE 031876-01-000 (2). CONNECT BLK WIRE TO WHT AND BLK/WHT WIRE TO YEL.
- 6. AT MINIMUM ALL WIRES TO BE SUPPORTED AND SECURED PER CODE REQUIREMENTS. USE CLAMP 10495 OR 10497 OR WIRE TIE 8343 OR 108046 AND SCREW G67-XX-XXX OR G56-XX-XXX AS APPROPRIATE FOR INSTALLATION.
- 5 MARK WIRES WITH WRAP OF ORG TAPE.
- 4 SEE DETAIL BC FOR WIRING AND CONNECTION TO SENSOR PROBES.
- 3 SEE DRAINAGE SYSTEM INSTALLATION FOR ADDITIONAL INFORMATION.
- 2 WIRE ROUTED ALONG DRAINAGE PIPE AND CONNECTED TO PIPE WITH TIE-WIRE 8343-04-000.
- 1 SEE WIRING INSTL-TV/DVD FOR ADDITIONAL INFORMATION.

NOTES:

DESCRIPTION:  
**WIRING INSTL-BODY, 12V**

SHEET: 2 OF 4 ITEM/PART NO: 000019495 / 31388201000 REV

1B1 265

24-Apr-2017

8 7 6 5 4 3 2 1

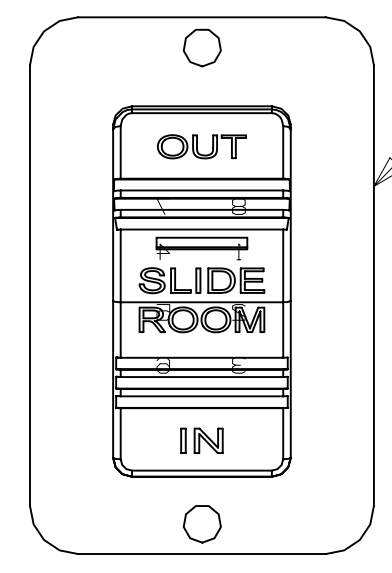
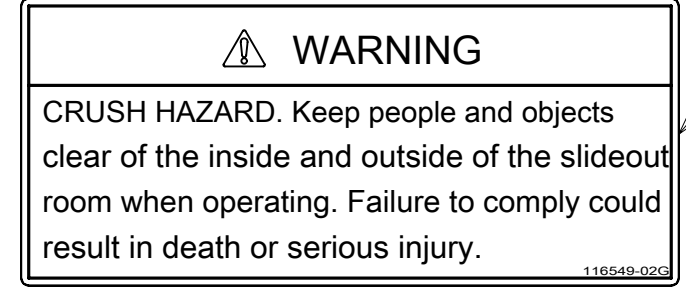
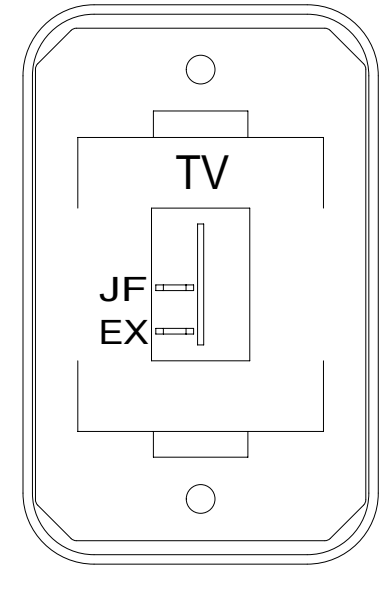


PLATE-SWITCH  
144363-02-CHT  
SWITCH  
108357-18-000  
ACTUATOR  
108356-31-CHT  
SCREW  
G11-08-08U (2)



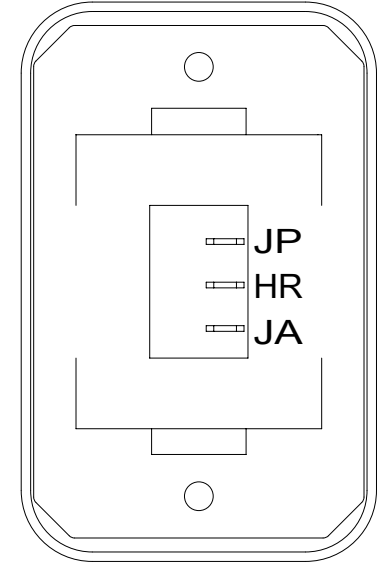
LABEL-WARNING, SLIDEOUT  
116549-02-000

DETAIL CA

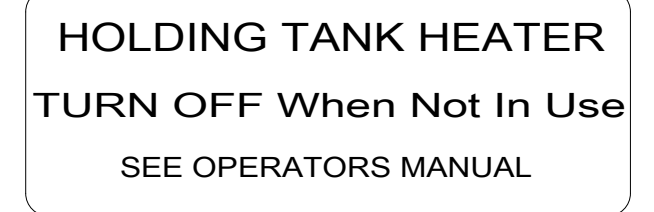


SWITCH-ROCKER  
135740-01-CHT  
SWITCH-BASE  
135741-01-CHT  
SWITCH-BEZEL  
135742-45-CHT  
SCREW  
G11-08-08U (2)

DETAIL CH



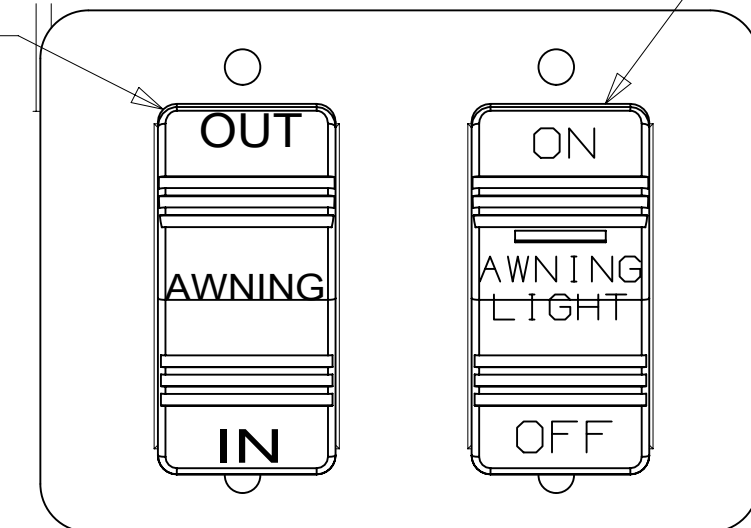
SWITCH-ROCKER  
135740-06-CHT  
SWITCH-BASE  
135741-01-CHT  
SWITCH-BEZEL  
135742-01-CHT  
LABEL-SWITCH  
134563-01-CHT  
SCREW  
G11-08-08U (2)



DETAIL CE 23T 23R

644 52N  
52F

SWITCH-ROCKER  
108357-06-000  
ACTUATOR-SWITCH  
108356-12-CHT  
SWITCH-BLANK  
096241-03-000

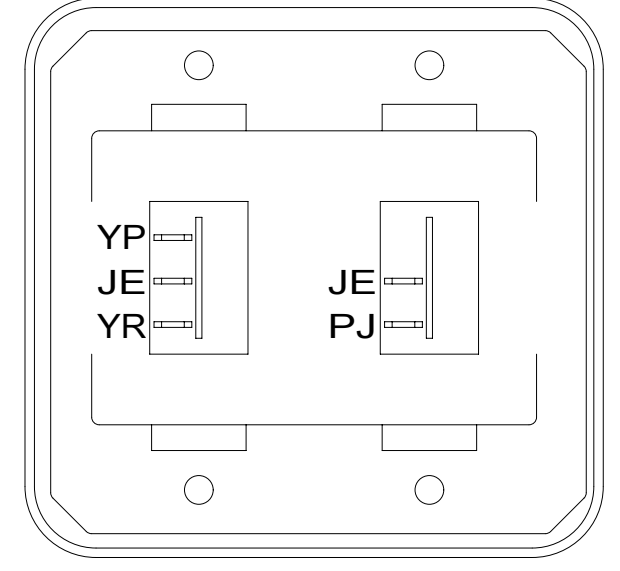


SWITCH-ROCKER  
108357-14-000  
ACTUATOR-SWITCH  
108356-28-CHT  
SWITCH-BLANK  
096241-03-000

52N 644  
52F

PLATE-SWITCH  
158431-17-CHT  
SCREW  
G11-06-10U (4)

DETAIL CD



SWITCH-ROCKER  
135740-01-CHT  
135740-02-CHT  
SWITCH-BASE  
135741-02-CHT  
SWITCH-BEZEL  
135742-02-CHT  
SCREW  
G11-08-08U (4)

DETAIL CB

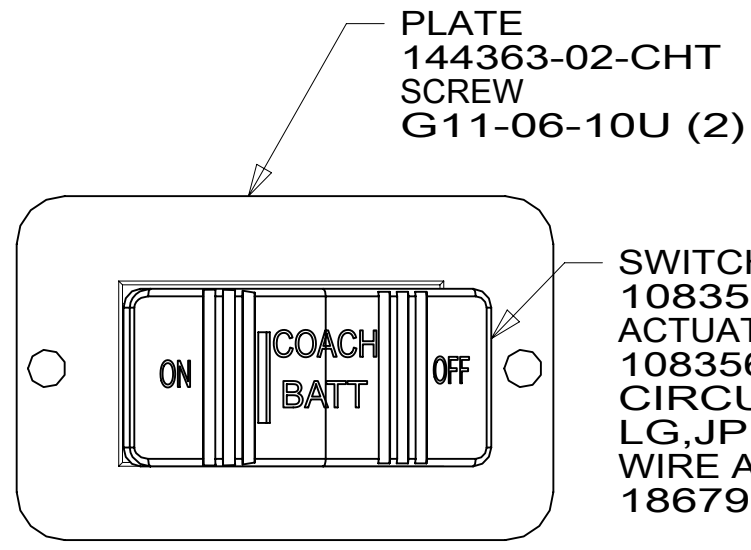
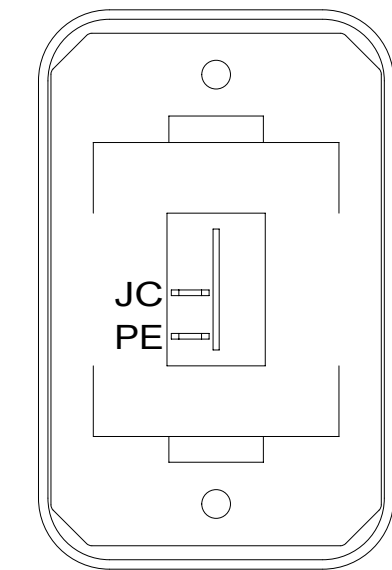


PLATE  
144363-02-CHT  
SCREW  
G11-06-10U (2)

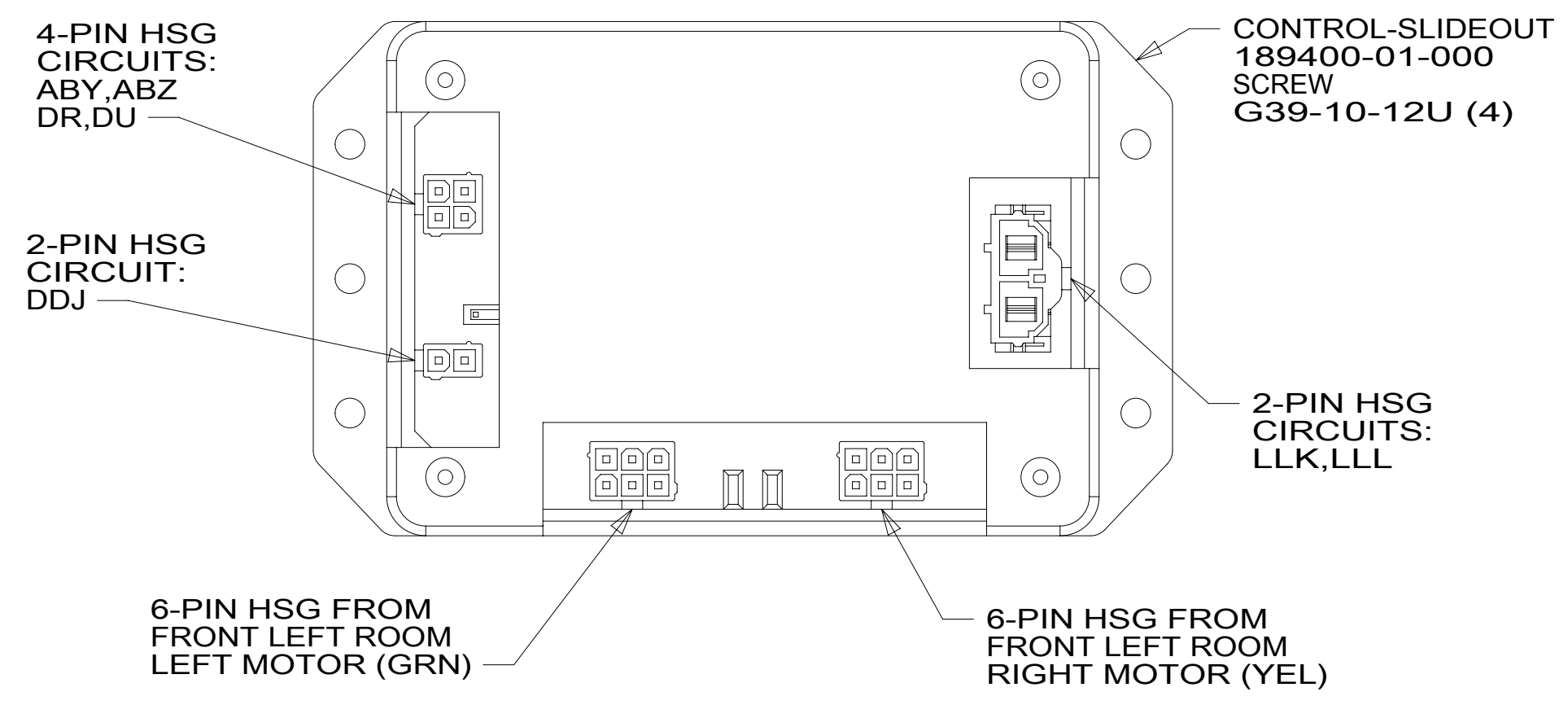
SWITCH-BATTERY  
108357-18-000  
ACTUATOR  
108356-19-CHT  
CIRCUITS LH,LJ,  
LG,JP,JA  
WIRE ASM-THERMISTOR  
186796-01-000

DETAIL CG

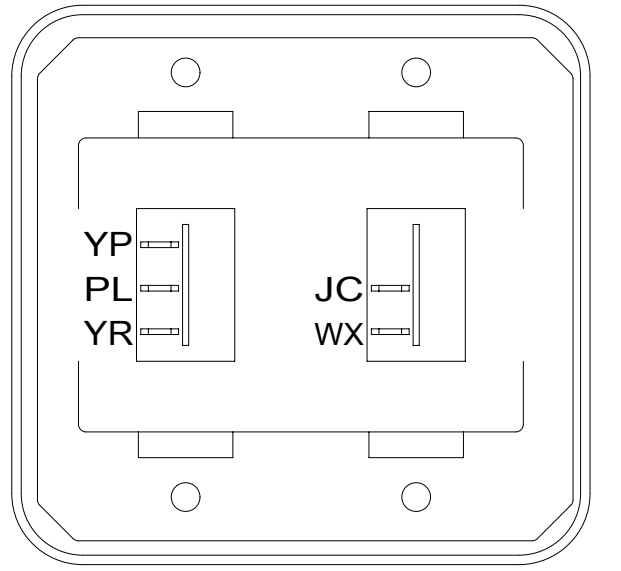


SWITCH-ROCKER  
135740-01-CHT  
SWITCH-BASE  
135741-01-CHT  
SWITCH-BEZEL  
135742-01-CHT  
SCREW  
G11-08-08U (2)

DETAIL CC

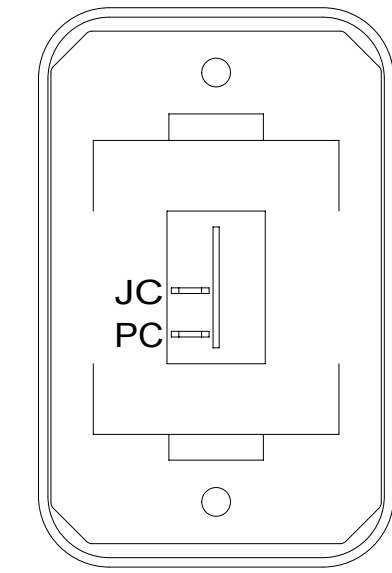


DETAIL CF 1



SWITCH-ROCKER  
135740-01-CHT  
135740-02-CHT  
SWITCH-BASE  
135741-02-CHT  
SWITCH-BEZEL  
135742-02-CHT  
SCREW  
G11-08-08U (4)

DETAIL CJ



SWITCH-ROCKER  
135740-01-CHT  
SWITCH-BASE  
135741-01-CHT  
SWITCH-BEZEL  
135742-01-CHT  
SCREW  
G11-08-08U (2)

DETAIL CK

- 52F AWNING-PATIO
- 52N AWNING - PATIO, ELECTRIC
- 23R DRAINAGE SYSTEM/HEAT-PREWIRE
- 23T DRAINAGE SYSTEM-HEATED
- 265 CODES/STANDARDS-CSA/CMVSS
- 1B1 CODES/STANDARDS USA

FOR ELECTRICAL TORQUE SPECIFICATIONS SEE DWG NO. 128783-01-000

FOR ELECTRICAL CALLOUTS SEE DWG NO. 121339-01-000

|   |  |
|---|--|
| 1B1   | 265                                      |
| DESCRIPTION:<br><b>WIRING INSTL-BODY, 12V</b> |  |
| SHEET:<br>3 OF 4                              | ITEM/PART NO:<br>000019495 / 31388201000 |
| REV<br>1 24-Apr-2017                          |  |

1 WIRING IS PART OF WIRE ASM-CHASSIS.  
NOTES:

8 7 6 5 4 3 2 1

8 7 6 5 4 3 2 1

D

D

C

C

B

B

A

A

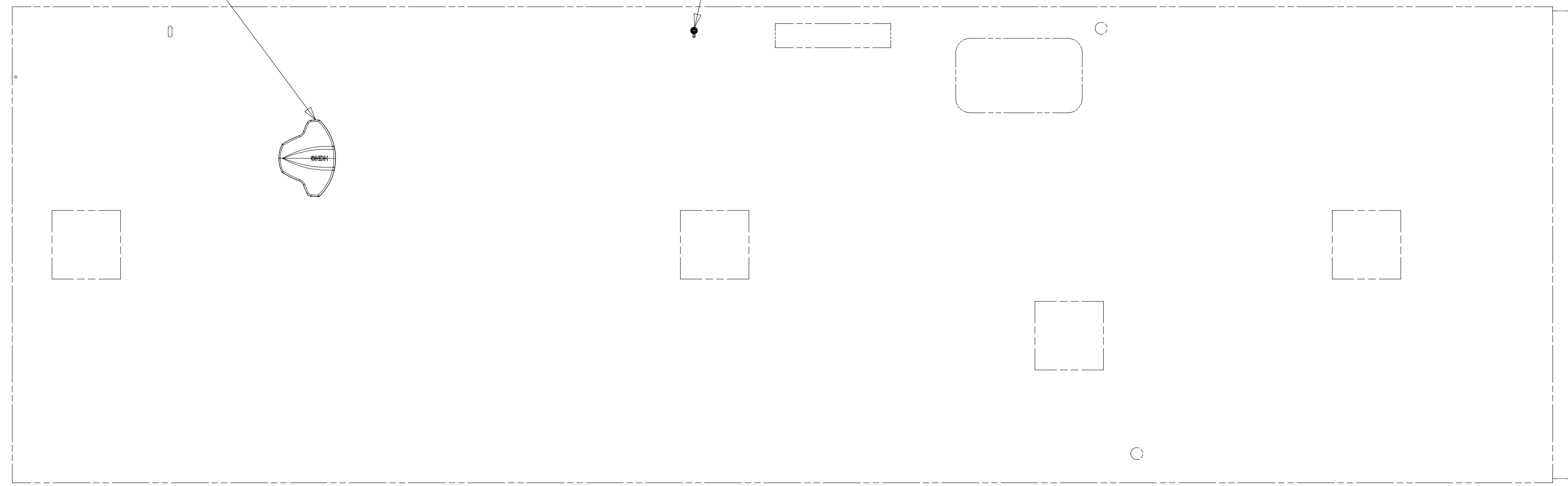
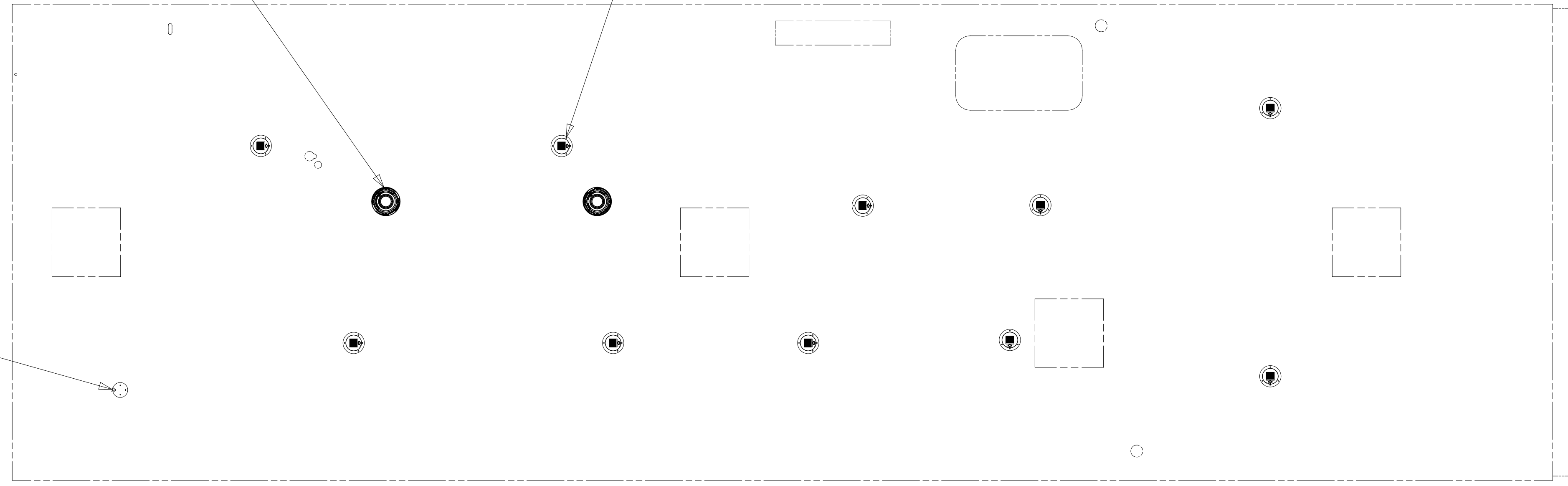
644 SPEAKER-ROUND,CEILING  
171547-01-CHT (2)  
SCREW  
G11-08-12U (8)

PRLED-4  
10

PSSLED-2

1 193 ANTENNA-TV ROOF  
000039180 / 318992-01-CHT  
SCREW  
G67-10-12U (6)  
1 1J8 ANTENNA-TV,OMNIDIRECTIONAL  
000045333 / 320902-01-CHT  
SCREW  
G67-10-12U (6)

644 ANTENNA-RADIO  
090944-02-000  
EXTENDER-SHAFT  
109889-04-000  
BRACKET-  
ANTENNA GROUND  
147741-01-CHT



- 644 GREAT ALASKAN RENTAL PACKAGE
- 1J8 TV ANTENNA-OMNI DIRECTIONAL
- 193 TV ANTENNA-AMPLIFIED SYSTEM
- 265 CODES/STANDARDS-CSA/CMVSS
- 1B1 CODES/STANDARDS USA

1 SEE ANTENNA INSTALLATION MANUAL FOR  
CORRECT INSTALLATION PROCEDURE.

FOR ELECTRICAL  
TORQUE  
SPECIFICATIONS  
SEE DWG NO.  
128783-01-000

FOR  
ELECTRICAL  
CALLOUTS  
SEE DWG NO.  
121339-01-000

|   |  |
|---|--|
| 1B1   | 265                                      |
| DESCRIPTION:<br><b>WIRING INSTL-BODY, 12V</b> |  |
| SHEET:<br>4 OF 4                              | ITEM/PART NO:<br>000019495 / 31388201000 |
| REV   |  |

NOTES:

8 7 6 5 4 3 2 1 24-Apr-2017