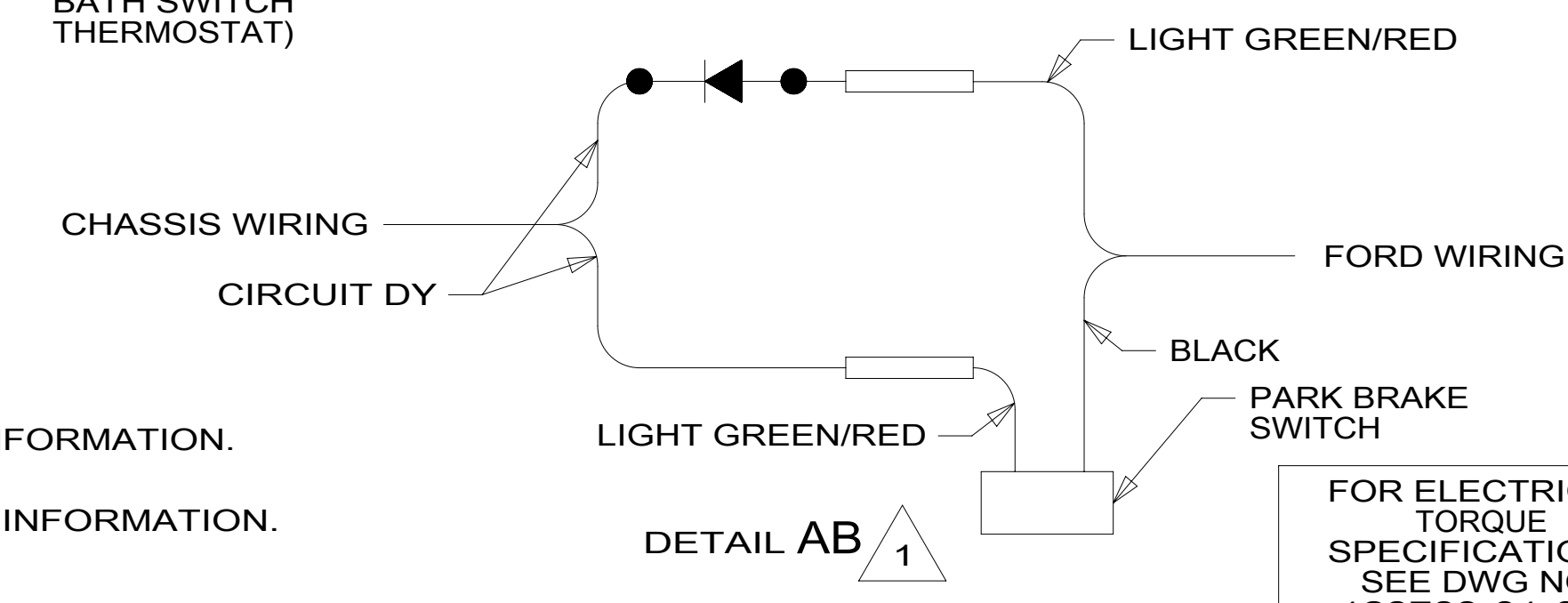


- NOTES:
- 6 FUSE LOCATED UNDER DASH BY PARK BRAKE ASM.
  - 5 SEE RADIO/MONITOR INSTL FOR ADDITIONAL INFORMATION.
  - 4 FUSE LOCATED UNDER DASH BY STEERING COLUMN.
  - 3. USE WIRE TIES 8343-04-000 AND 116673-02-000 APPROXIMATELY 600MM ON CENTER UNLESS OTHERWISE SPECIFIED.
  - 2. SECURE CONDUIT 41953, TAB AS REQUIRED, OVER ALL WIRES IN CONTACT WITH SHARP EDGES.
  - 1 CUT LIGHT GREEN/RED WIRE FROM PARK BRAKE SWITCH AND RECONNECT TO CIRCUIT DY OF CHASSIS ASM AS SHOWN.

- 9 SEE LOAD CENTER/ATS ASM FOR ADDITIONAL INFORMATION.
- 8 SEE WIRING INSTL-BODY, 12V FOR ADDITIONAL INFORMATION.
- 7 SEE SHEET 3 FOR ADDITIONAL INFORMATION.



FOR ELECTRICAL TORQUE SPECIFICATIONS SEE DWG NO. 128783-01-000

FOR ELECTRICAL CALLOUTS SEE DWG NO. 121339-01-000

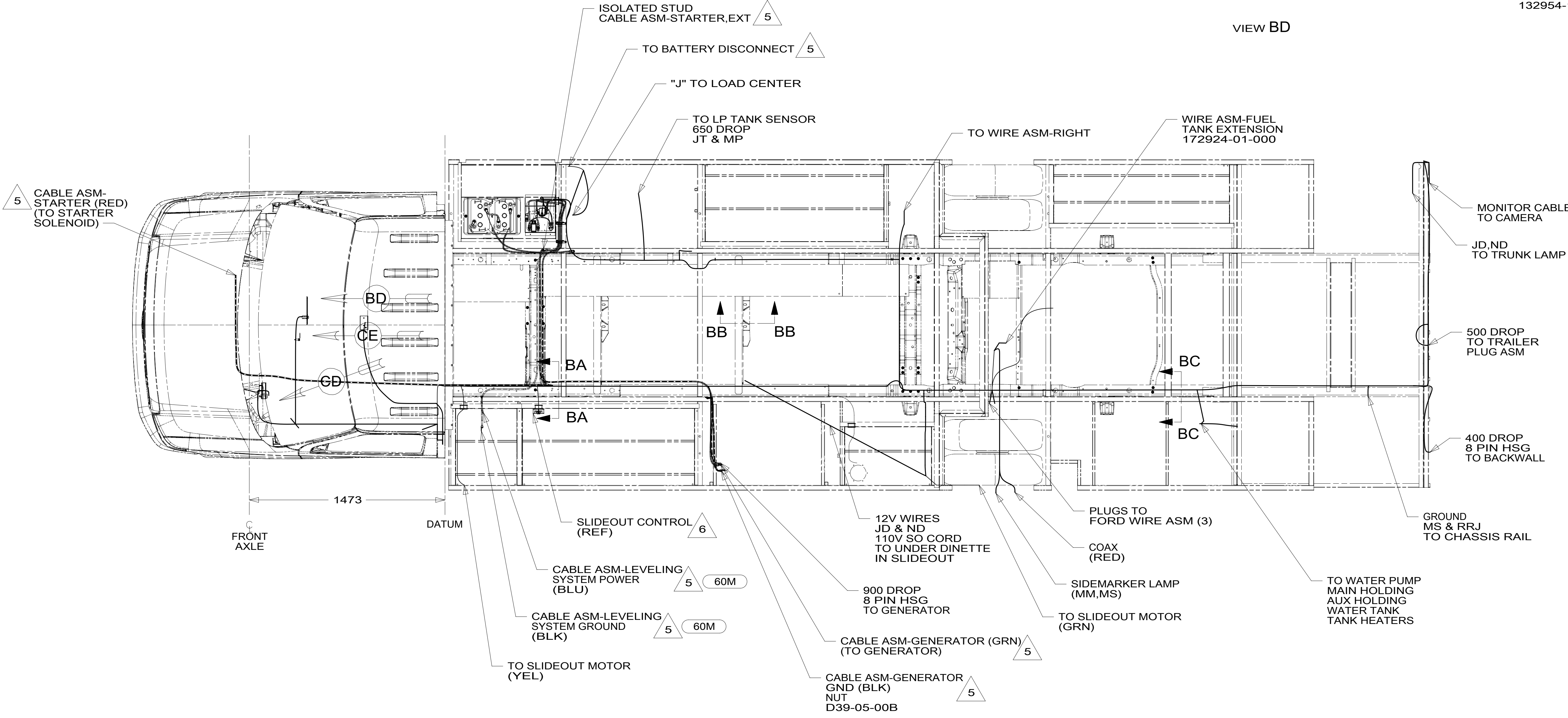
- 09A PREMIUM PACKAGE
- 60M HYDRAULIC LEVEL JACKS-AUTO
- 644 GREAT ALASKAN RENTAL PACKAGE
- 283 MIRRORS-UPGRADE W/CAMERA
- 965 SEAT PEDESTALS-SWIVEL/SLIDE
- 16Y FORD CHASSIS - 14,500#\_GVWR
- 265 CODES/STANDARDS-CSA/CMVSS
- 1B1 CODES/STANDARDS USA

1B1 265 16Y

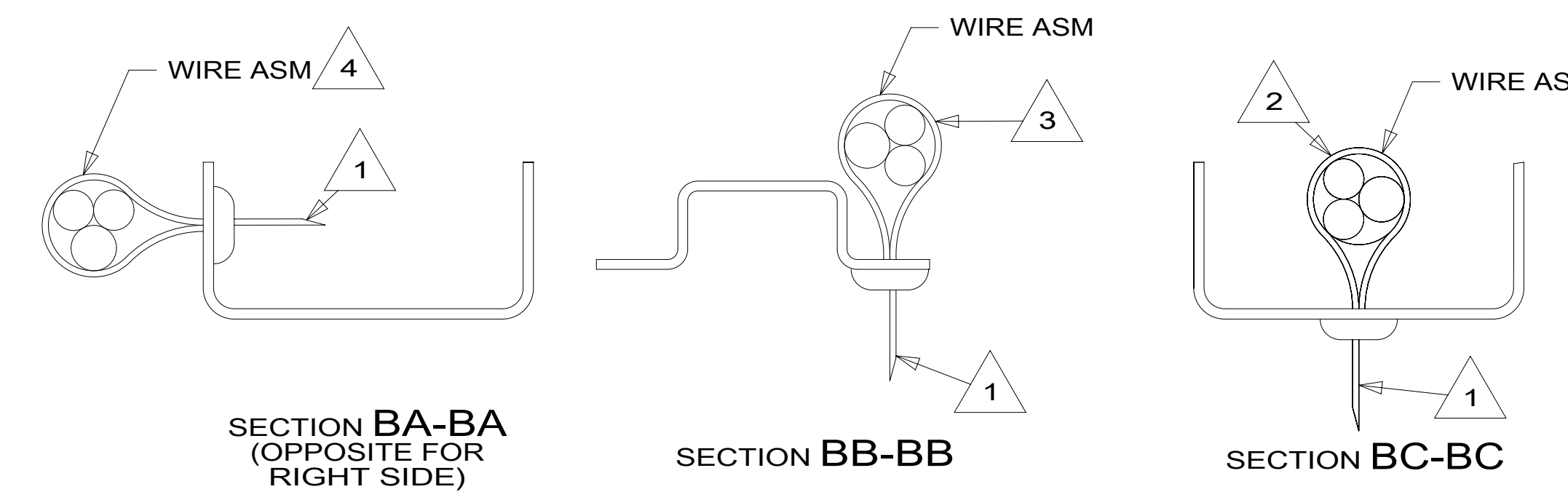
**WINNEBAGO**  
COPYRIGHT 2016 WINNEBAGO INDUSTRIES, INC.

DSNR:		ALL DIMENSIONS ARE IN MILLIMETERS
DIFTR:		
UNSPECIFIED TOLERANCES:		MATERIAL:
WHOLE DIM (X)	: 3	
ONE-PLACE (X.X)	: 1.5	
TWO-PLACE (X.XX)	: 0.50	
ANGLE	: 1°	
REFER TO ES0018 FOR FASTENER TIGHTENING GUIDELINES	WEIGHT: (LBS)	FIRST USED:
		17 331K
DESCRIPTION: <b>WIRING INSTL-CHASSIS</b>		
SHEET: 1 OF 3	ITEM/PART NO: 000019490 / 31387901000	REV:

REF: 1 03-Nov-2016



- NOTES:
- 6 SEE WIRING INSTL-BODY, 12V FOR ADDITIONAL INFORMATION.
  - 5 SEE BATTERY INSTL FOR ADDITIONAL INFORMATION.
  - 4 WIRES TO BE TIED TO CROSS MEMBER USING EXISTING HOLES.
  - 3 WIRES TO BE TIED TO TOP OF RAIL USING EXISTING HOLES.
  - 2 WIRES TO BE TIED TO INSIDE OF RAIL USING EXISTING HOLES.
  - 1 CUT OFF EXCESS END OF WIRE TIE.

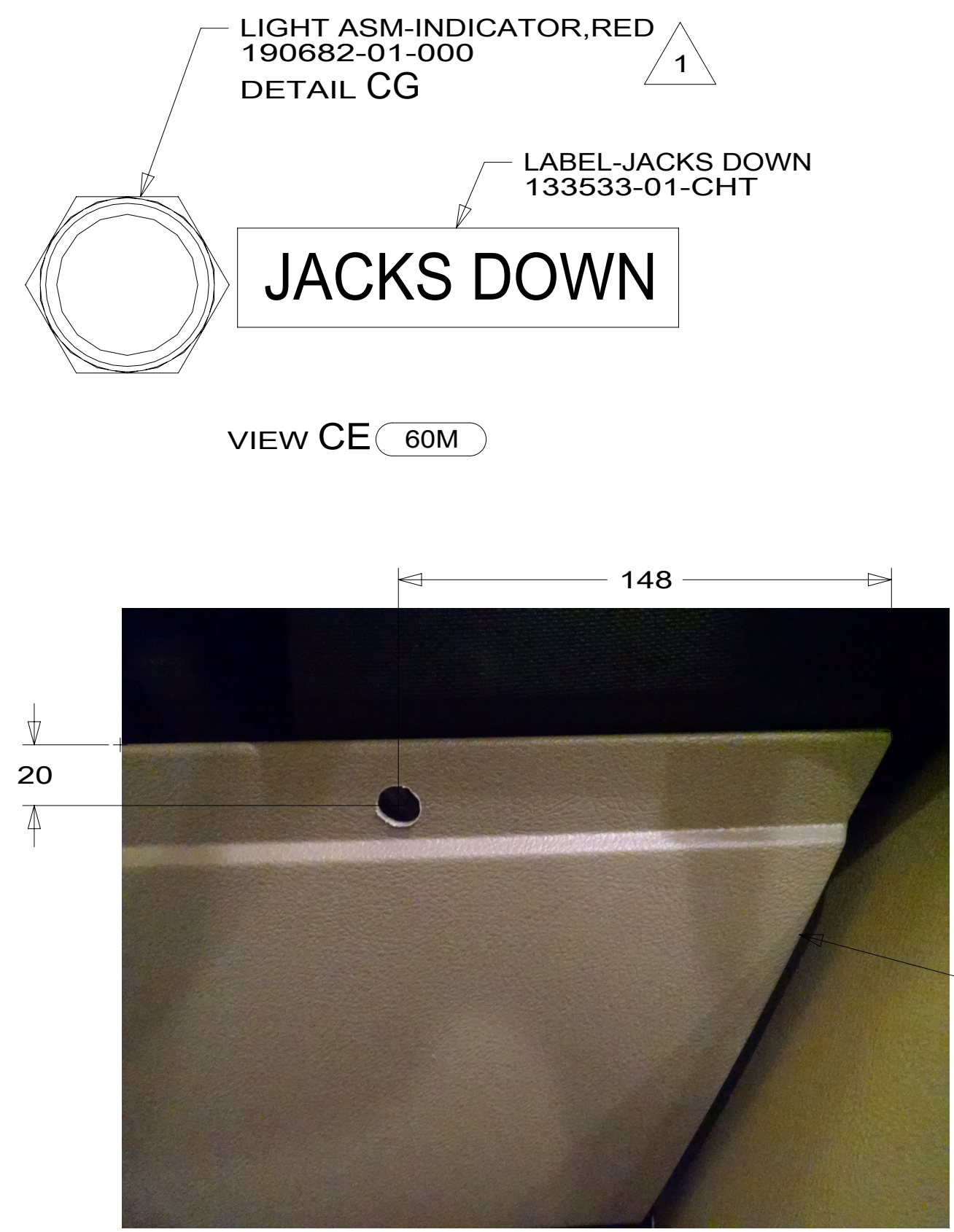


FOR ELECTRICAL TORQUE SPECIFICATIONS SEE DWG NO. 128783-01-000

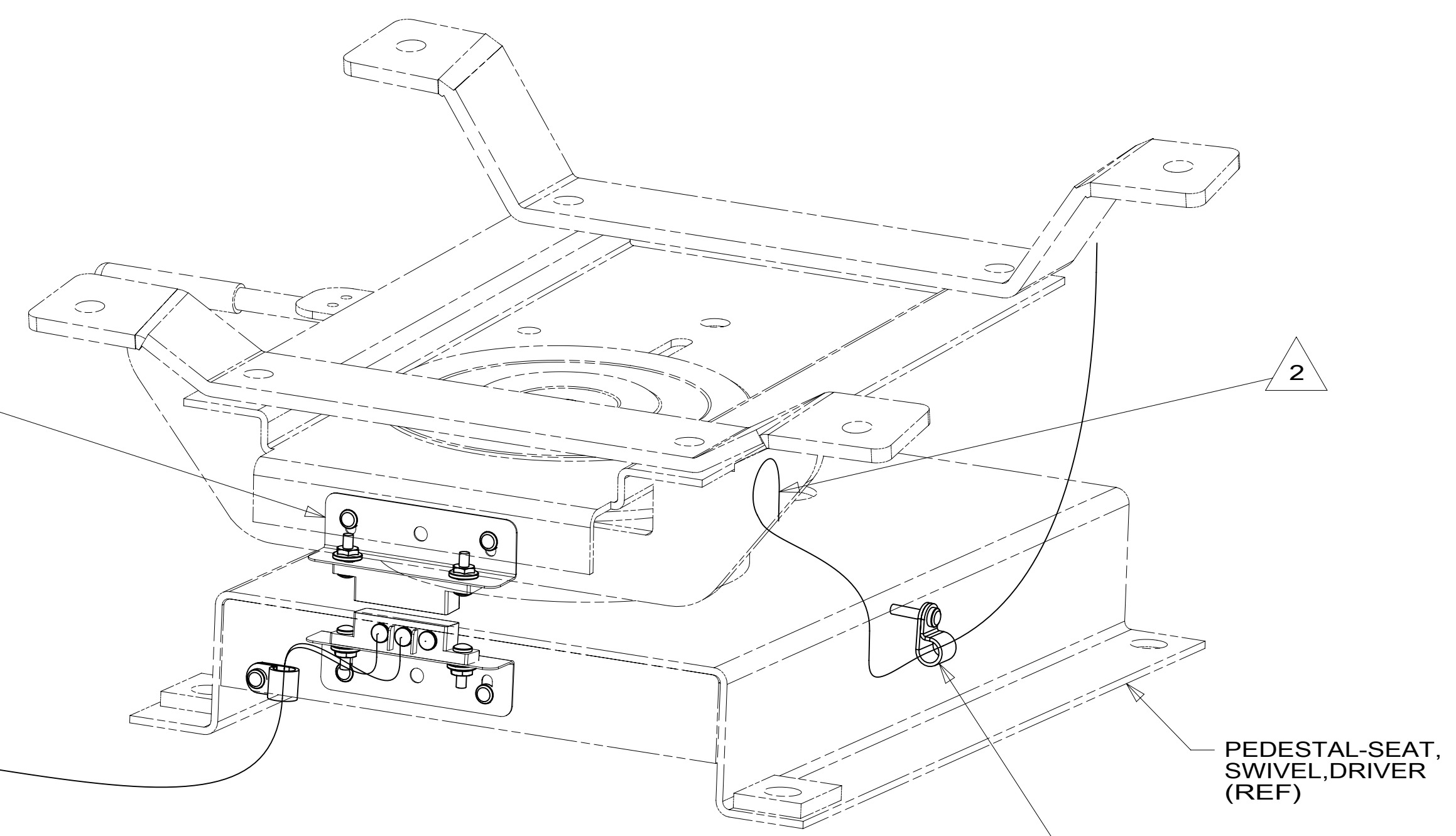
FOR ELECTRICAL CALLOUTS SEE DWG NO. 121339-01-000

- 60M HYDRAULIC LEVEL JACKS-AUTO
- 16Y FORD CHASSIS - 14,500#\_GVWR
- 265 CODES/STANDARDS-CSA/CMVSS
- 1B1 CODES/STANDARDS USA

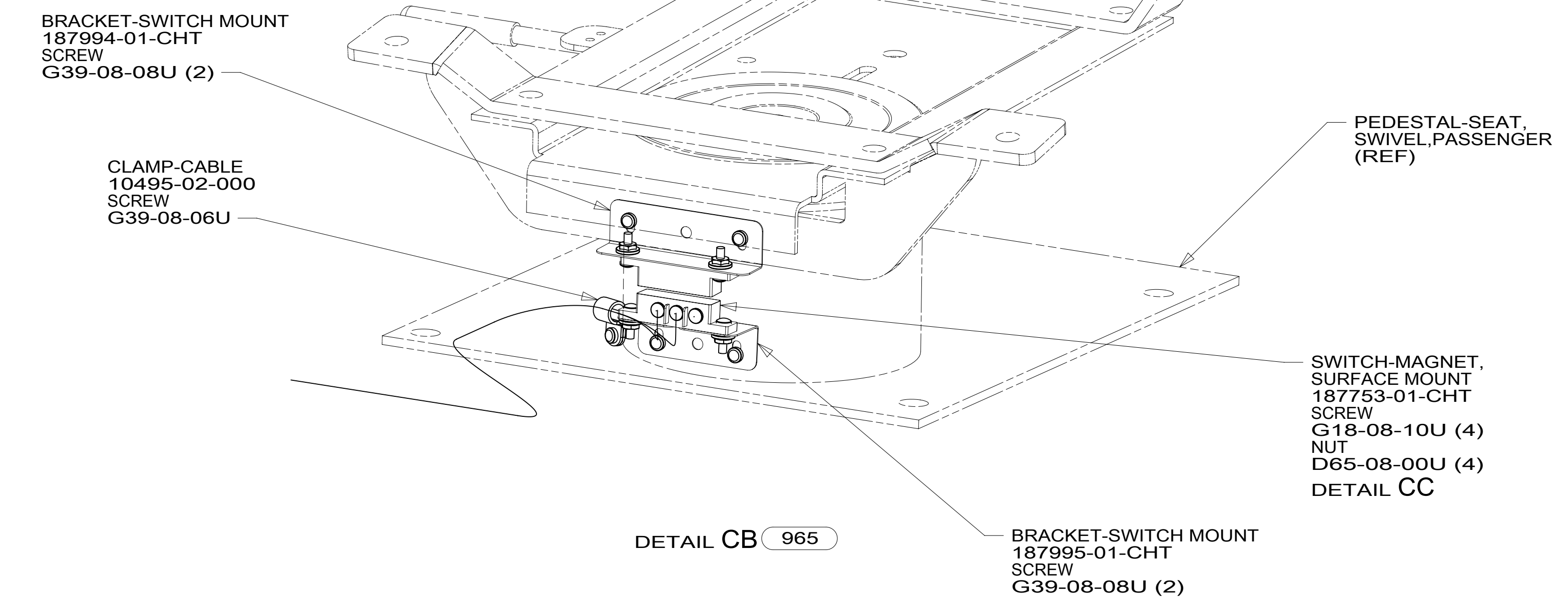
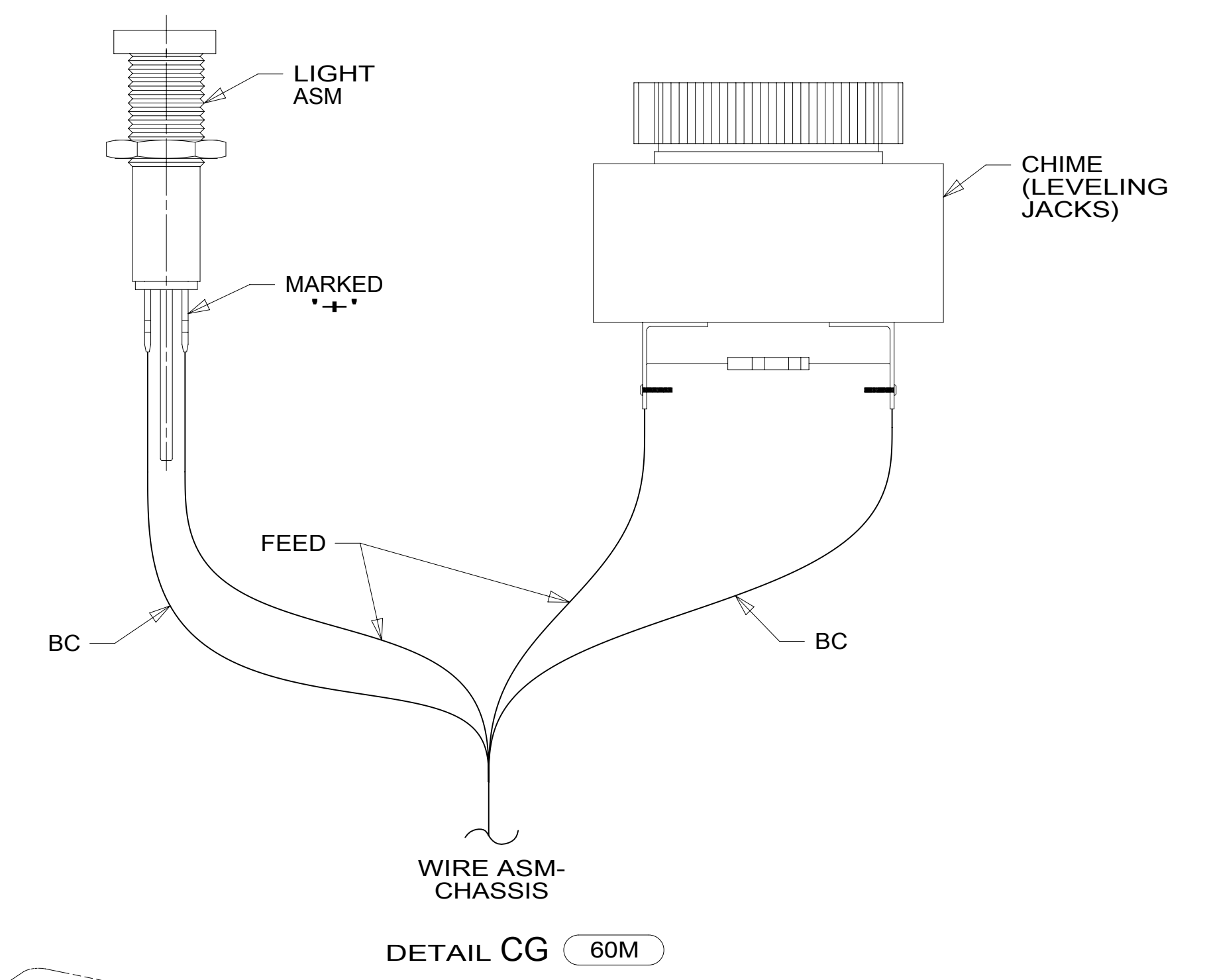
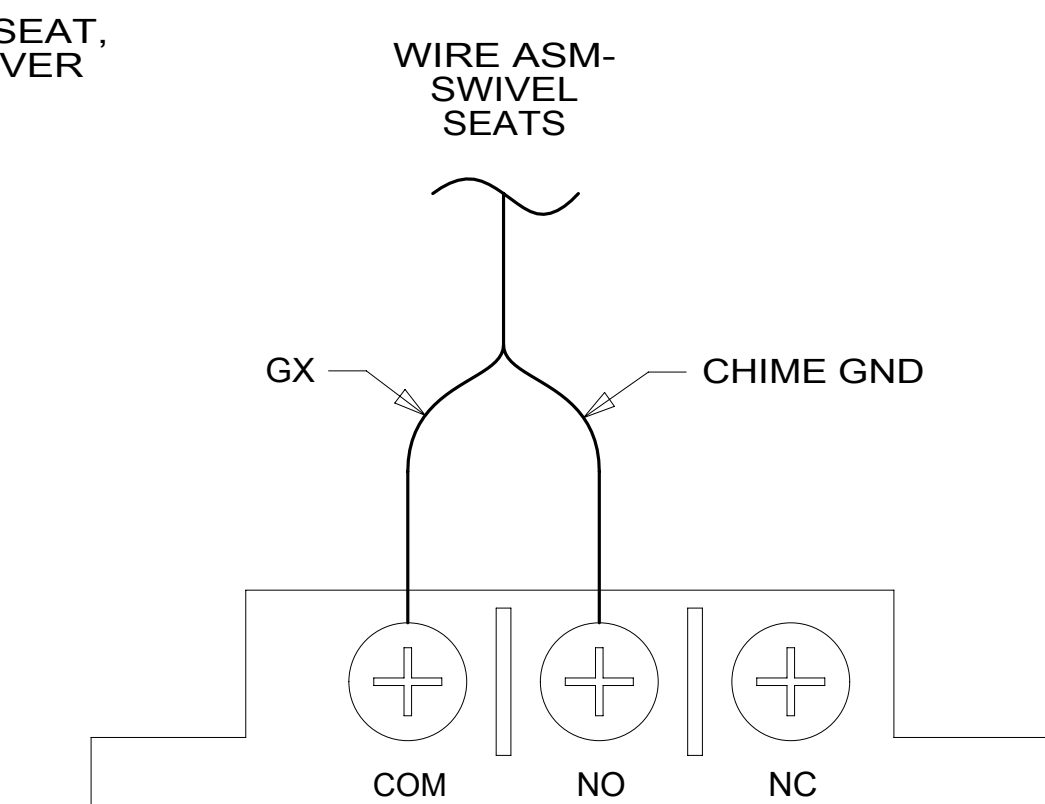
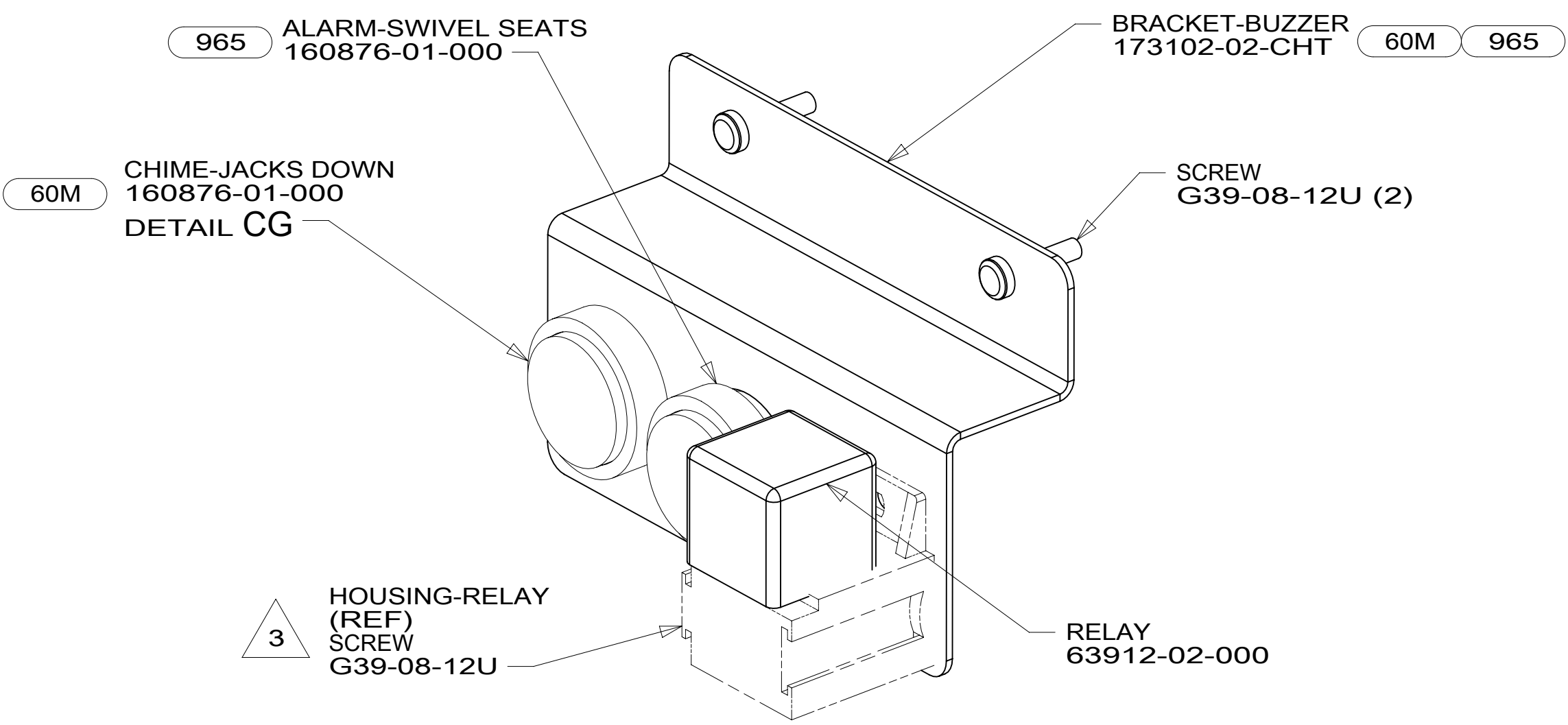
DESCRIPTION:		<b>WIRING INSTL-CHASSIS</b>	
SHEET:	ITEM/PART NO.:	REV	
2 OF 3	000019490 / 31387901000		



BRACKET-SWITCH MOUNT  
187994-01-CHT (2)  
SCREW  
G39-08-08U (4)  
SWITCH-MAGNET,  
SURFACE MOUNT  
187753-01-CHT  
SCREW  
G18-08-10U (4)  
NUT  
D65-08-00U (4)  
DETAIL CC



- NOTES:
- 1 FOR HOLE SIZE AND LOCATION SEE DETAIL CF.
  - 2 COVER FORD WIRING WITH CONVOLUTE 41953-01-000 (150 MM) TO PROTECT WIRES FROM SHARP EDGES WHERE THEY PASS THROUGH SEAT PEDESTAL. SECURE BOTH ENDS TO WIRES WITH TAPE 8363-01-000.
  - 3 PART OF WIRE ASM-SWIVEL SEATS.



FOR ELECTRICAL TORQUE SPECIFICATIONS SEE DWG NO. 128783-01-000

FOR ELECTRICAL CALLOUTS SEE DWG NO. 121339-01-000

- 60M HYDRAULIC LEVEL JACKS-AUTO
- 965 SEAT PEDESTALS-SWIVEL/SLIDE
- 16Y FORD CHASSIS - 14,500#\_GVWR
- 265 CODES/STANDARDS-CSA/CMVSS
- 1B1 CODES/STANDARDS USA

DESCRIPTION:	1B1 265 16Y	
<b>WIRING INSTL-CHASSIS</b>		
SHEET:	ITEM/PART NO:	REV
3 OF 3	000019490 / 31387901000	