

8

7

6

5



4

3

2

1

D

D

C

C

B

B

A

A

CABLE ASM-STARTER (RED)	141415-32-049
CABLE ASM-COACH BATTERY (YEL)	141415-52-016
CABLE ASM-COACH BATTERY GND (BLK)	133566-12-008
CABLE ASM-GENERATOR (GRN)	141415-42-052
CABLE ASM-GENERATOR GND (BLK)	133566-12-008
CABLE ASM-STARTER,EXT (RED 2)	141415-32-018

265 CODES/STANDARDS-CSA/CMVSS

1B1 CODES/STANDARDS USA

1B1 265



COPYRIGHT 2016 WINNEBAGO INDUSTRIES, INC.

DSNR:		ALL DIMENSIONS ARE IN MILLIMETERS		
DFFR:		MATERIAL:		
UNSPECIFIED TOLERANCES:				
WHOLE DIM (X)	: 3			
ONE-PLACE (X.X)	: 1.5			
TWO-PLACE (X.XX)	: 0.50			
ANGLE	: 1°			

REFER TO ES0018 FOR FASTENER TIGHTENING GUIDELINES	WEIGHT: (LBS)	FIRST USED:
		17 325B

BATTERY INSTL

SHEET:	ITEM/PART NO:	REV
1 OF 3	000019483 / 31387401000	

REF: 1 20-Jan-2017

FOR ELECTRICAL TORQUE SPECIFICATIONS SEE DWG NO. 128783-01-000

FOR ELECTRICAL CALLOUTS SEE DWG NO. 121339-01-000

8

7

6

5



4

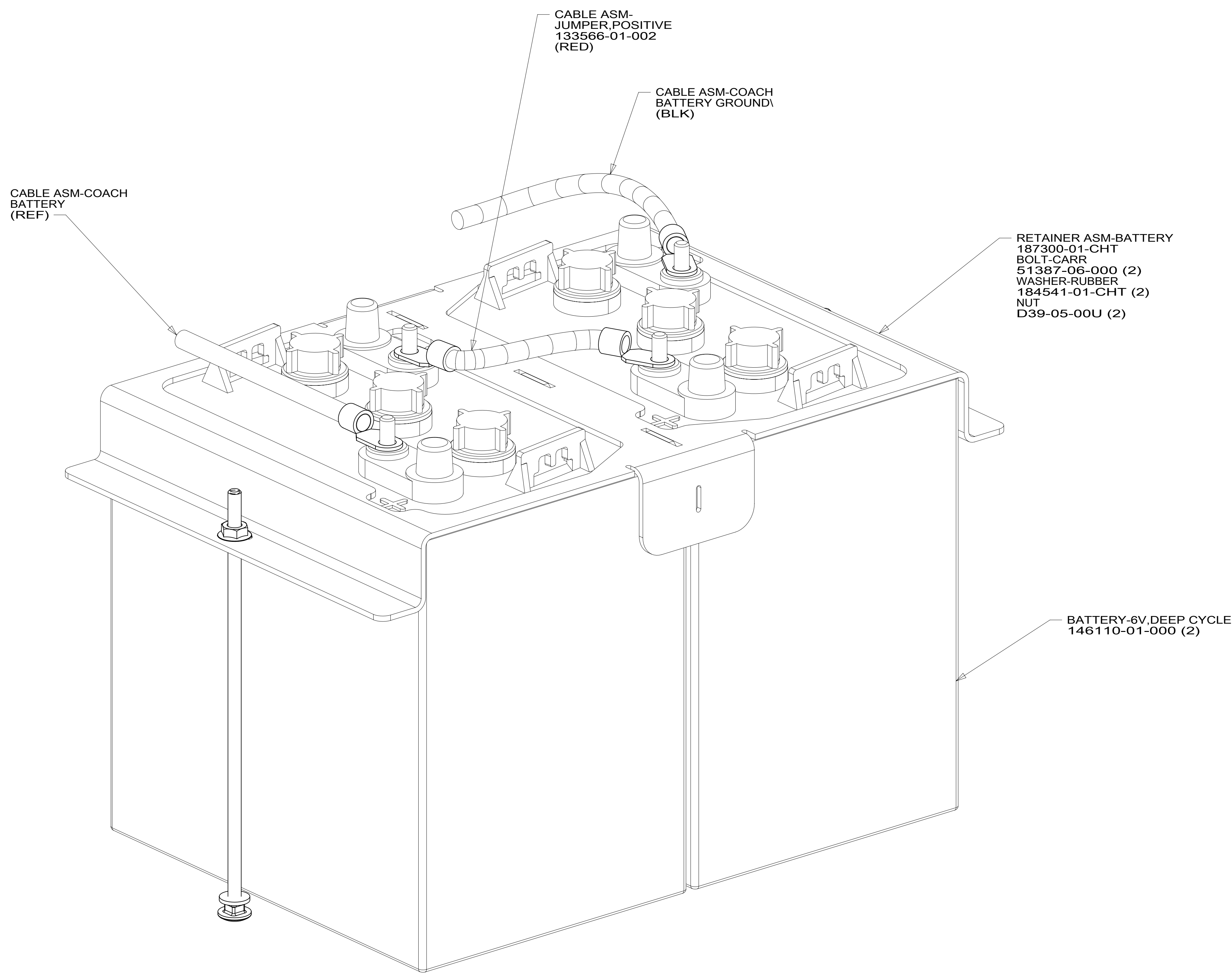
3

2

1

8 7 6 5 4 3 2 1

D
C
B
A



VIEW BA

- 16Y FORD CHASSIS - 14,500#_GVWR
- 165 FORD 11,500# GVWR 5.4L ENGIN
- 644 GREAT ALASKAN RENTAL PACKAGE
- 265 CODES/STANDARDS-CSA/CMVSS
- 1B1 CODES/STANDARDS USA

FOR ELECTRICAL
TORQUE
SPECIFICATIONS
SEE DWG NO.
128783-01-000

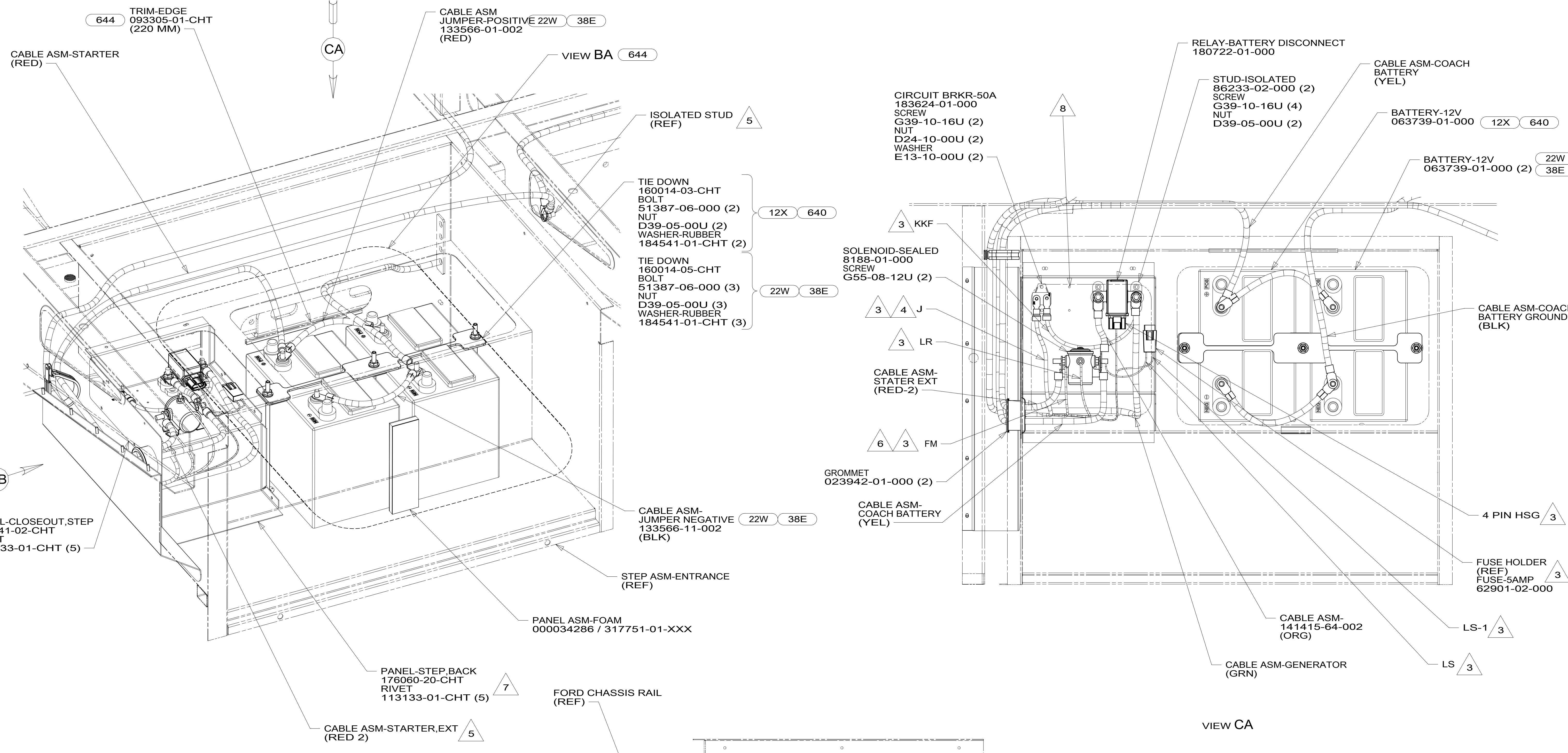
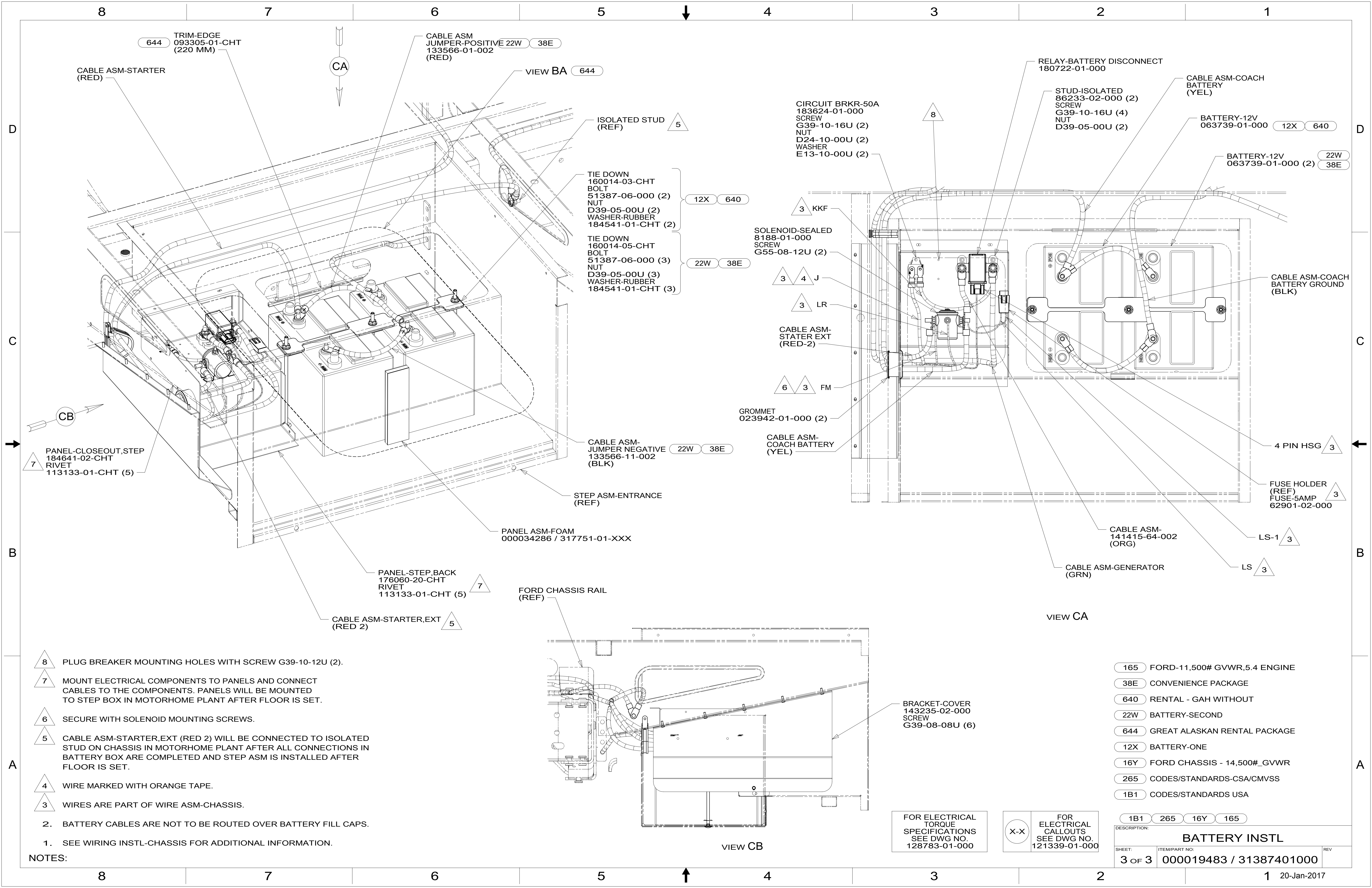
FOR
ELECTRICAL
CALLOUTS
SEE DWG NO.
121339-01-000

1B1 265 644 165 16Y

DESCRIPTION:
BATTERY INSTL

SHEET: 2 OF 3 ITEM/PART NO: 000019483 / 31387401000 REV

8 7 6 5 4 3 2 1 20-Jan-2017



- 8 PLUG BREAKER MOUNTING HOLES WITH SCREW G39-10-12U (2).
- 7 MOUNT ELECTRICAL COMPONENTS TO PANELS AND CONNECT CABLES TO THE COMPONENTS. PANELS WILL BE MOUNTED TO STEP BOX IN MOTORHOME PLANT AFTER FLOOR IS SET.
- 6 SECURE WITH SOLENOID MOUNTING SCREWS.
- 5 CABLE ASM-STARTER,EXT (RED 2) WILL BE CONNECTED TO ISOLATED STUD ON CHASSIS IN MOTORHOME PLANT AFTER ALL CONNECTIONS IN BATTERY BOX ARE COMPLETED AND STEP ASM IS INSTALLED AFTER FLOOR IS SET.
- 4 WIRE MARKED WITH ORANGE TAPE.
- 3 WIRES ARE PART OF WIRE ASM-CHASSIS.
2. BATTERY CABLES ARE NOT TO BE ROUTED OVER BATTERY FILL CAPS.
1. SEE WIRING INSTL-CHASSIS FOR ADDITIONAL INFORMATION.

- 165 FORD-11,500# GVWR,5.4 ENGINE
- 38E CONVENIENCE PACKAGE
- 640 RENTAL - GAH WITHOUT
- 22W BATTERY-SECOND
- 644 GREAT ALASKAN RENTAL PACKAGE
- 12X BATTERY-ONE
- 16Y FORD CHASSIS - 14,500#_GVWR
- 265 CODES/STANDARDS-CSA/CMVSS
- 1B1 CODES/STANDARDS USA

FOR ELECTRICAL TORQUE SPECIFICATIONS SEE DWG NO. 128783-01-000

FOR ELECTRICAL CALLOUTS SEE DWG NO. 121339-01-000

DESCRIPTION:		
1B1 265 16Y 165		
BATTERY INSTL		
SHEET:	ITEM/PART NO.:	REV
3 OF 3	000019483 / 31387401000	