

8

7

6

5

4

3

2

1



RED	1B1	136135-07-041
	265	136136-07-041
YEL	1B1	136131-05-023
	265	136134-05-023
BLK	1B1	136135-06-041
	265	136136-06-041
BRN	1B1	136131-03-050
	265	136134-03-050
BLU	1B1	136131-02-055
	265	136134-02-055
THROW IN WIRE #1	1B1	136131-02-035
	265	136134-02-035
THROW IN WIRE #2	1B1	136131-02-035
	265	136134-02-035
THROW IN WIRE #3	1B1	136131-02-042
	265	136134-02-042
THROW IN WIRE #4	1B1	136131-03-040
	265	136134-03-040
THROW IN WIRE #5	1B1	136131-03-037
	265	136134-03-037
MAIN	1B1	164957-13-036
	265	164957-14-036
GROUND MAIN		136145-06-018

D

D

C

C

B

B

A

A

- NOTES:
1. ALL GROUND WIRES TO BE COVERED WITH TUBING 8041-02-000.
 2. SECURE WIRES TO BACKSIDE OF LOAD CENTER WITH WIRE TIE 116673-01-000.
 3. SEE WIRING INSTL-BODY,12V FOR ADDITIONAL INFORMATION.

FOR ELECTRICAL TORQUE SPECIFICATIONS SEE DWG NO. 128783-01-000

FOR ELECTRICAL CALLOUTS SEE DWG NO. 121339-01-000

- 265 CODES/STANDARDS-CSA/CMVSS
- 1B1 CODES/STANDARDS USA
- 1B1 265

WINNEBAGO
COPYRIGHT 2016 WINNEBAGO INDUSTRIES, INC.

DSNR:	ALL DIMENSIONS ARE IN MILLIMETERS	
DIFFR:	MATERIAL:	
UNSPECIFIED TOLERANCES:		
WHOLE DIM (X)	: 3	
ONE-PLACE (X.X)	: 1.5	
TWO-PLACE (X.XX)	: 0.50	
ANGLE	: 1°	
REFER TO ES0018 FOR FASTENER TIGHTENING GUIDELINES	WEIGHT: (LBS)	FIRST USED: 17 325B
DESCRIPTION: LOAD CENTER/ATS ASM		
SHEET: 1 OF 3	ITEM/PART NO: 000019481 / 31387001000	REV

8

7

6

5

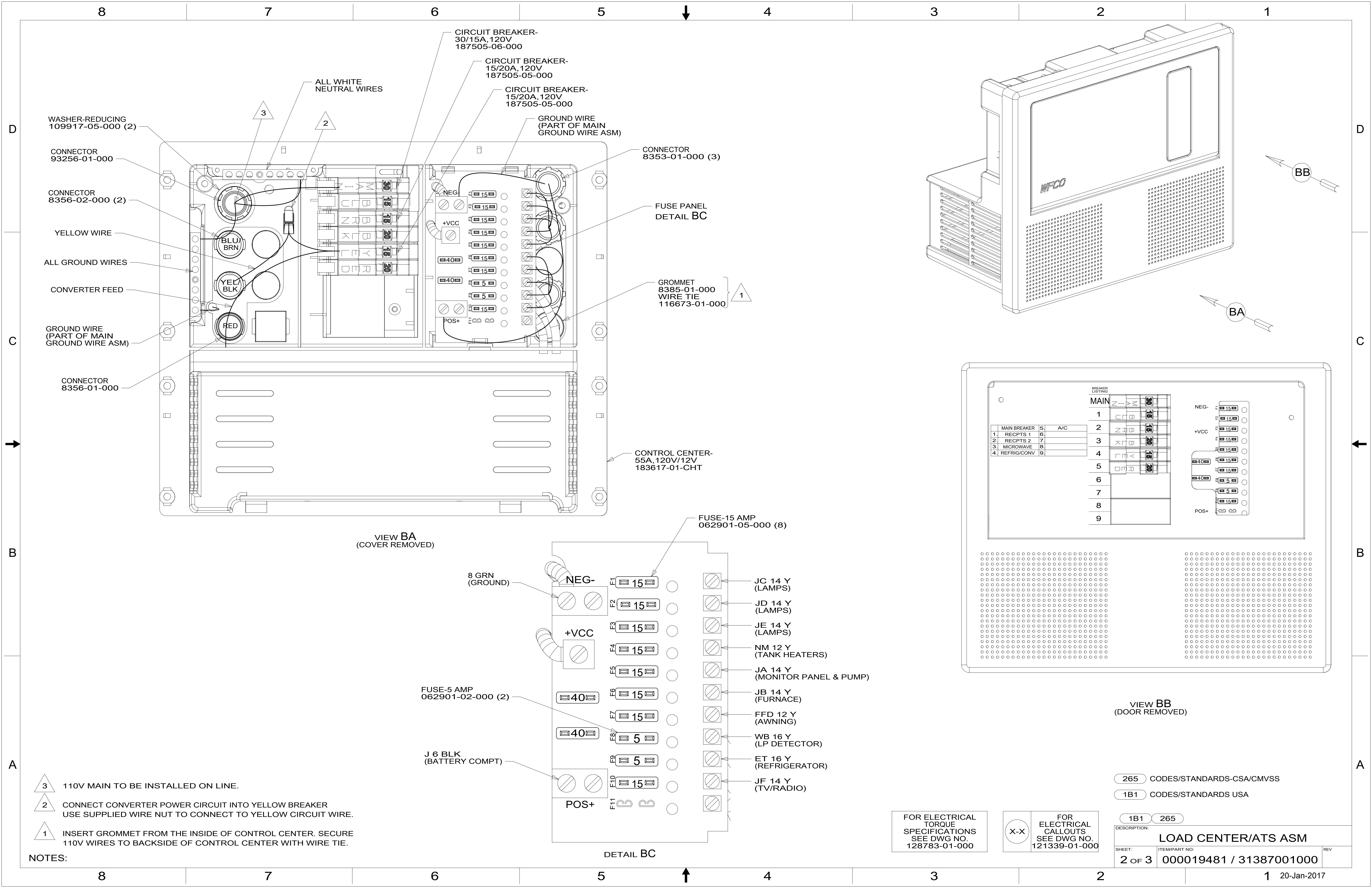
4

3

2

1





WASHER-REDUCING
109917-05-000 (2)

CONNECTOR
93256-01-000

CONNECTOR
8356-02-000 (2)

YELLOW WIRE

ALL GROUND WIRES

CONVERTER FEED

GROUND WIRE
(PART OF MAIN
GROUND WIRE ASM)

CONNECTOR
8356-01-000

CIRCUIT BREAKER-
30/15A, 120V
187505-06-000

CIRCUIT BREAKER-
15/20A, 120V
187505-05-000

CIRCUIT BREAKER-
15/20A, 120V
187505-05-000

GROUND WIRE
(PART OF MAIN
GROUND WIRE ASM)

CONNECTOR
8353-01-000 (3)

FUSE PANEL
DETAIL BC

GROMMET
8385-01-000
WIRE TIE
116673-01-000

CONTROL CENTER-
55A, 120V/12V
183617-01-CHT

VIEW BA
(COVER REMOVED)

FUSE-15 AMP
062901-05-000 (8)

8 GRN
(GROUND)

NEG-

E1 15

E2 15

E3 15

E4 15

E5 15

FUSE-5 AMP
062901-02-000 (2)

E6 40

E7 15

J 6 BLK
(BATTERY COMPT)

E8 40

E9 5

E10 15

POS+

F11

JC 14 Y
(LAMPS)

JD 14 Y
(LAMPS)

JE 14 Y
(LAMPS)

NM 12 Y
(TANK HEATERS)

JA 14 Y
(MONITOR PANEL & PUMP)

JB 14 Y
(FURNACE)

FFD 12 Y
(AWNING)

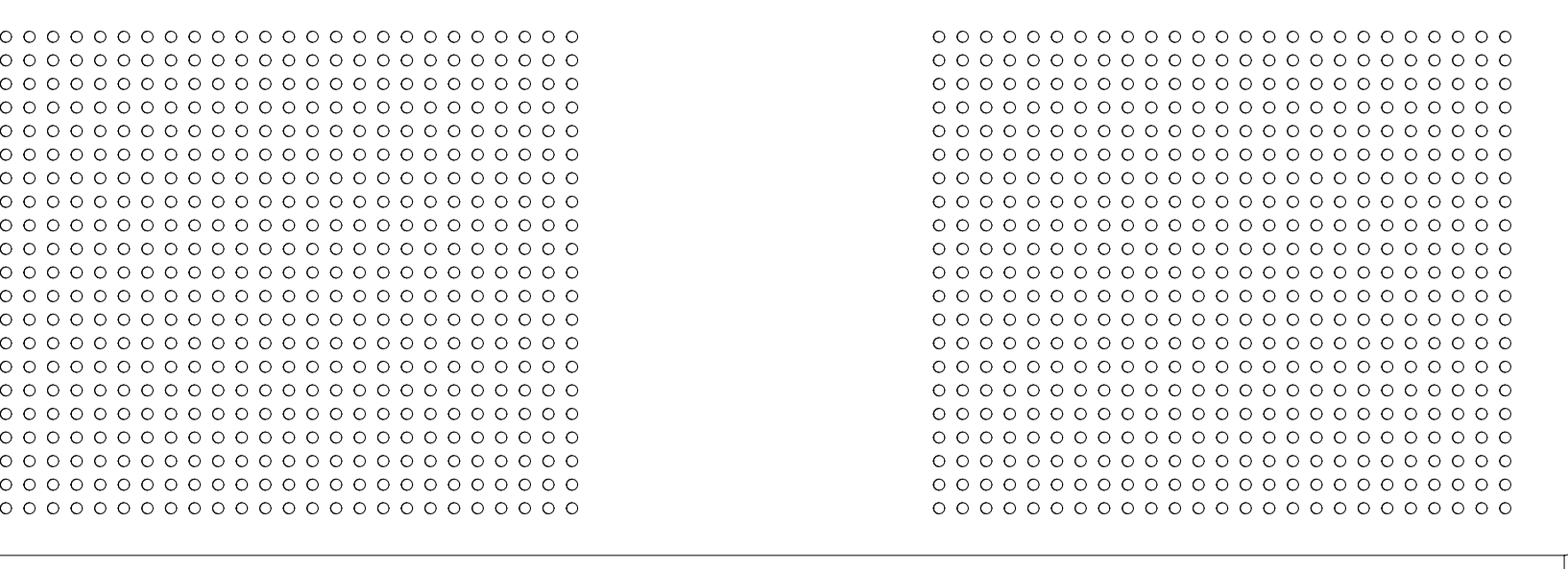
WB 16 Y
(LP DETECTOR)

ET 16 Y
(REFRIGERATOR)

JF 14 Y
(TV/RADIO)

DETAIL BC

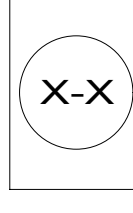
BREAKER LISTING		
MAIN		
1		A/C
2		
3		
4		
5		
6		
7		
8		
9		



VIEW BB
(DOOR REMOVED)

- NOTES:
- 3 110V MAIN TO BE INSTALLED ON LINE.
 - 2 CONNECT CONVERTER POWER CIRCUIT INTO YELLOW BREAKER USE SUPPLIED WIRE NUT TO CONNECT TO YELLOW CIRCUIT WIRE.
 - 1 INSERT GROMMET FROM THE INSIDE OF CONTROL CENTER. SECURE 110V WIRES TO BACKSIDE OF CONTROL CENTER WITH WIRE TIE.

FOR ELECTRICAL
TORQUE
SPECIFICATIONS
SEE DWG NO.
128783-01-000



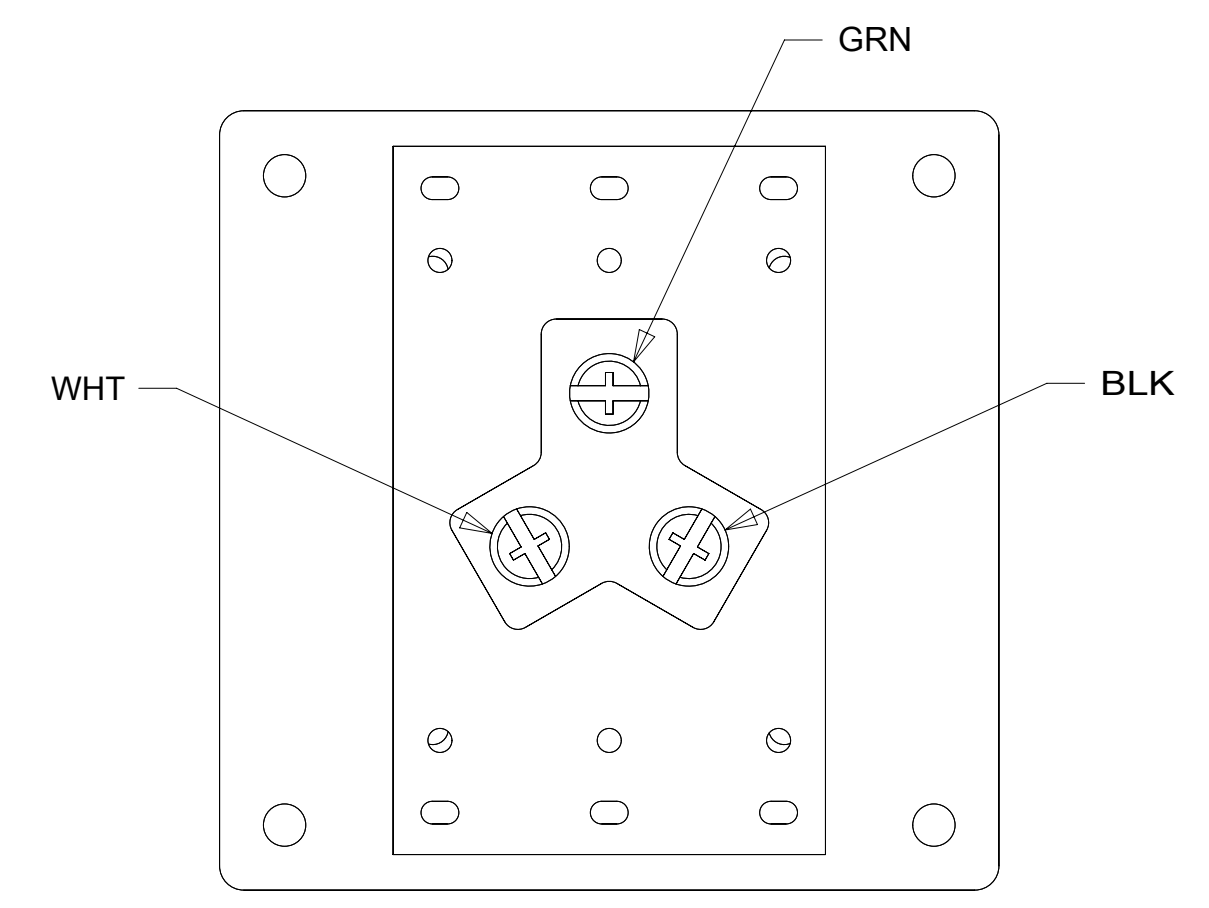
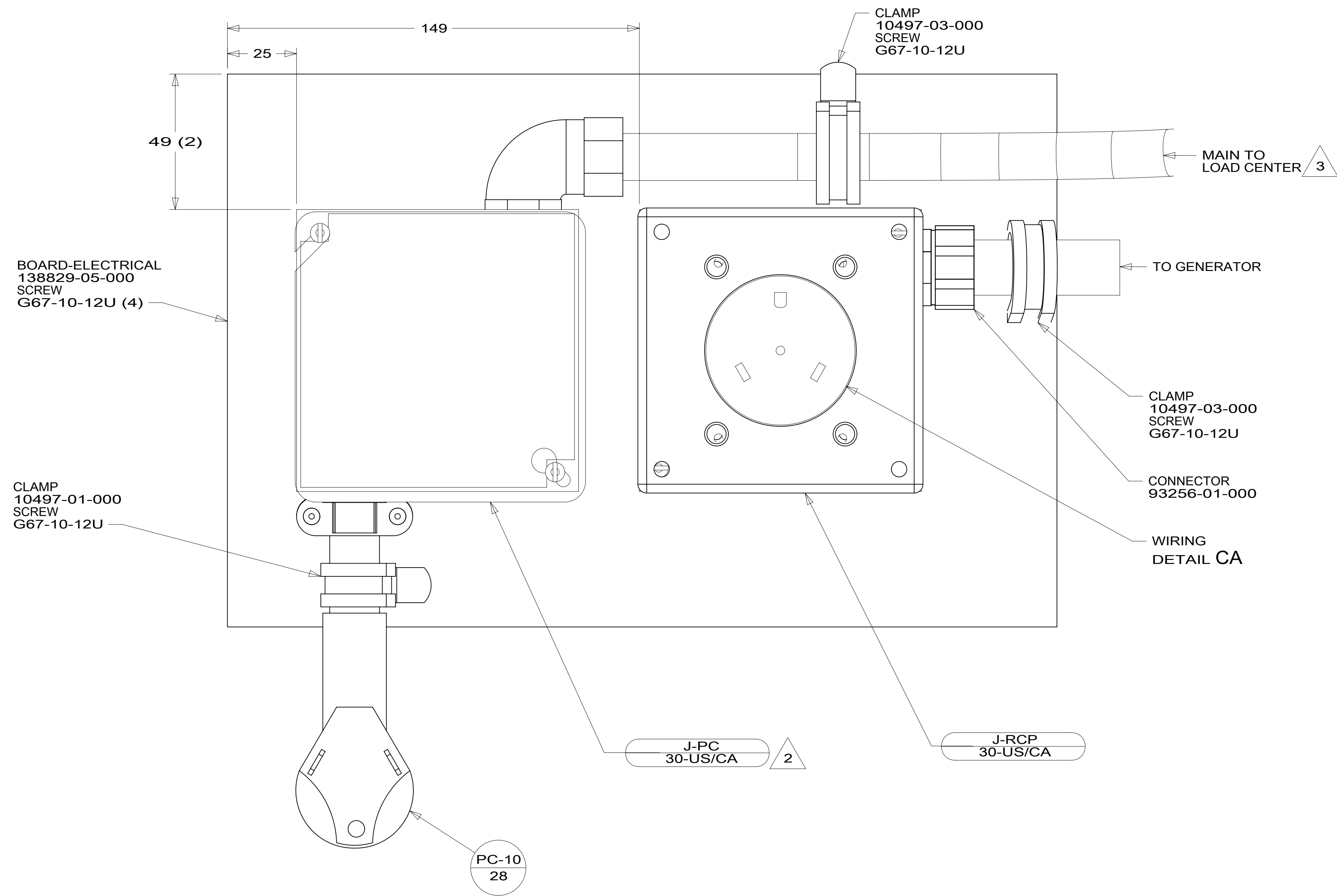
FOR ELECTRICAL
CALLOUTS
SEE DWG NO.
121339-01-000

- 265 CODES/STANDARDS-CSA/CMVSS
- 1B1 CODES/STANDARDS USA

DESCRIPTION: LOAD CENTER/ATS ASM	
SHEET: 2 OF 3	ITEM/PART NO: 000019481 / 31387001000
REV	

8 7 6 5 4 3 2 1

D
C
B
A



3 SEE WIRING INSTL-BODY, 110V FOR ADDITIONAL INFORMATION.

2 CONNECT BLK TO BLK, WHT TO WHT, AND GRNDS TO GRNDS.

1. ALL GROUND WIRES TO BE COVERED WITH TUBING 8041-02-000.

NOTES:

FOR ELECTRICAL TORQUE SPECIFICATIONS SEE DWG NO. 128783-01-000

FOR ELECTRICAL CALLOUTS SEE DWG NO. 121339-01-000

265 CODES/STANDARDS-CSA/CMVSS

1B1 CODES/STANDARDS USA

1B1 265		DESCRIPTION: LOAD CENTER/ATS ASM	
SHEET: 3 OF 3	ITEM/PART NO: 000019481 / 31387001000	REV	

8 7 6 5 4 3 2 1 20-Jan-2017