

8 7 6 5 4 3 2 1

D

D

C

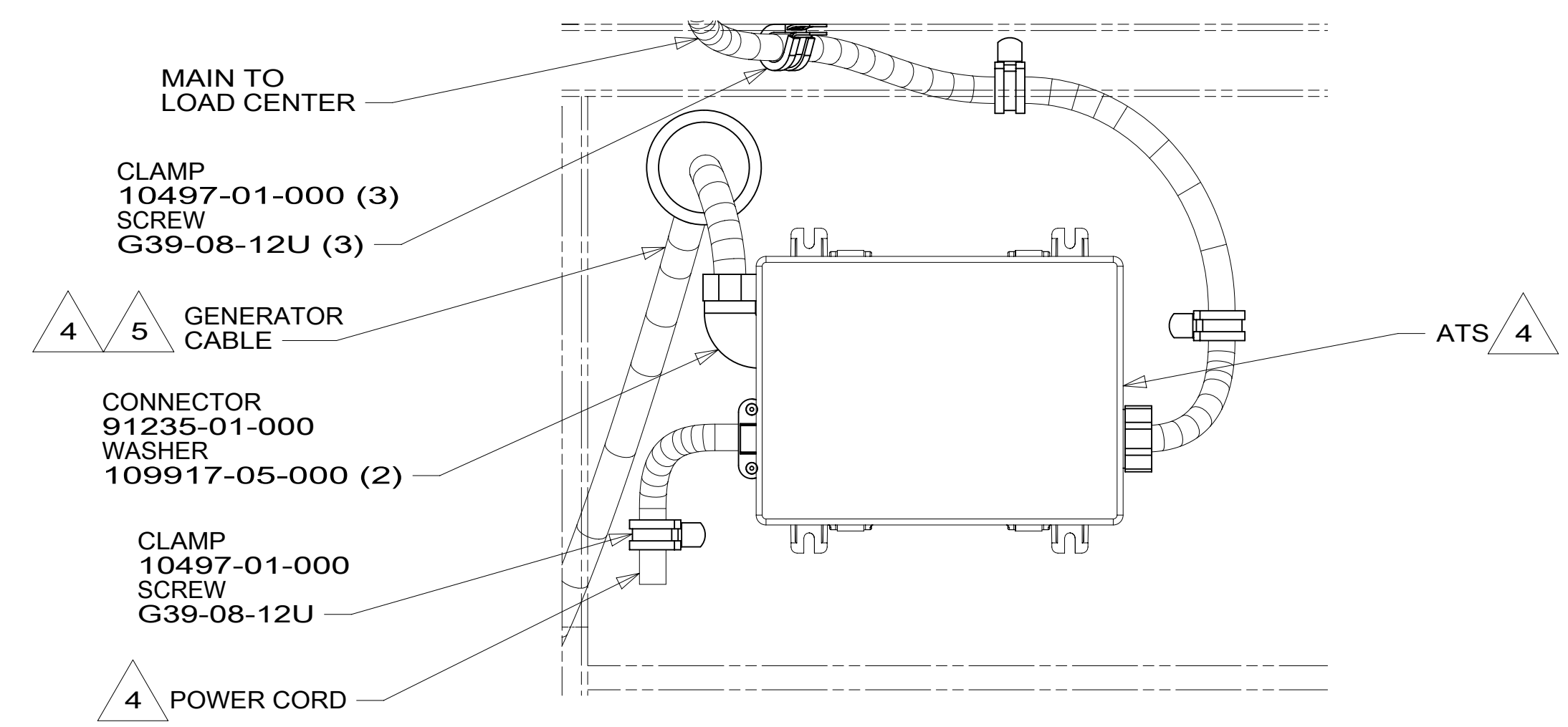
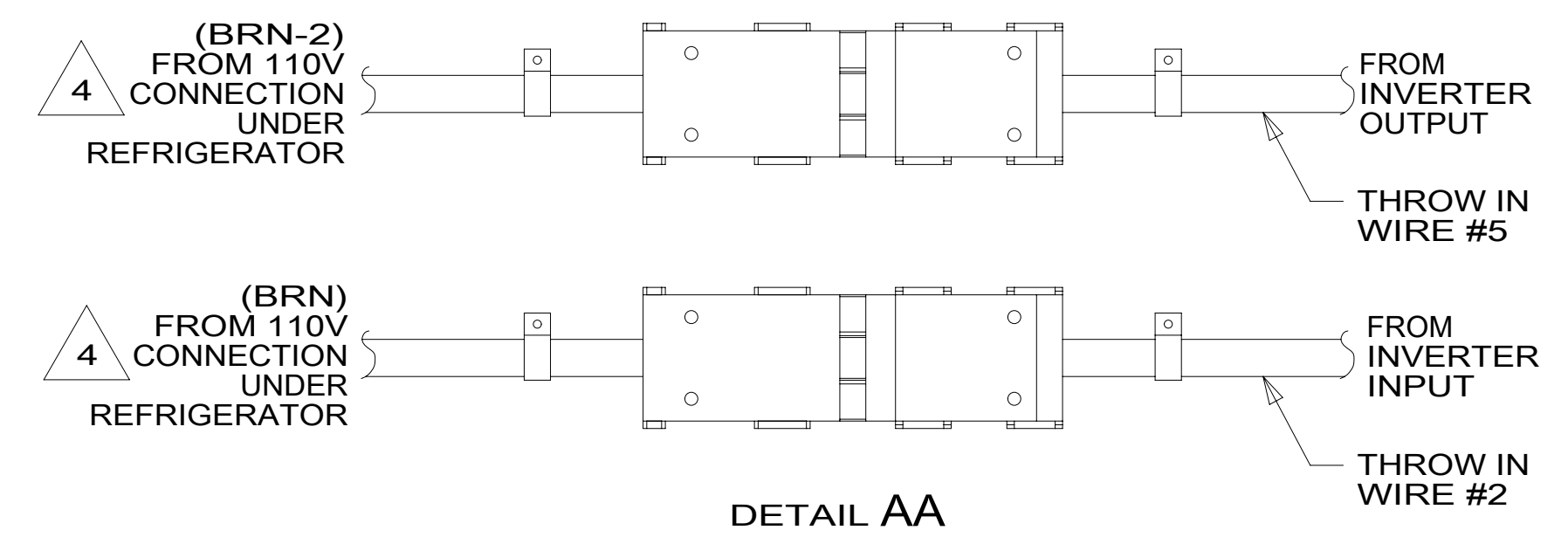
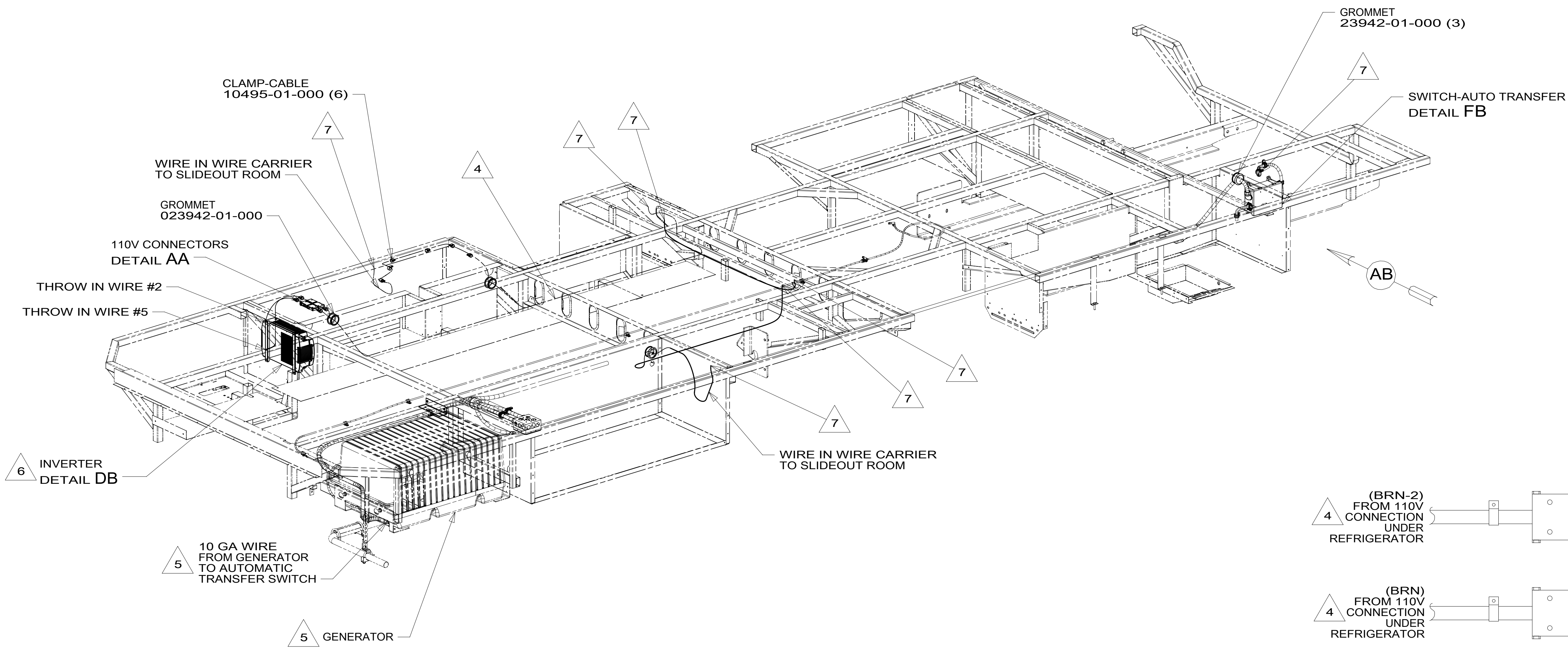
C

B

B

A

A



- 7 WIRE PASSES THROUGH FLOOR IN THIS AREA.
- 6 SEE WIRING INSTL-CHASSIS FOR ADDITIONAL INFORMATION.
- 5 SEE GENERATOR INSTL FOR ADDITIONAL INFORMATION.
- 4 WIRE IS PART OF WIRE ASM-CHASSIS.
- 3. ALL GROUND WIRES TO BE COVERED WITH TUBING 8041-02-000.
- 2. ALL 110V WIRES ARE TO BE CLAMPED WITH CLAMP 10497-05-000 WITHIN 200MM OF OUTLET BOXES, USE SCREW G67-10-12B.
- 1. ALL WIRES TO BE SECURED WITH CLAMP 10495 OR 10497 OR WIRE TIE 8343 OR 108046 EVERY 600MM, USE SCREW G67-XX-XXX OR G56-XX-XXX AS APPROPRIATE FOR INSTALLATION.

NOTES:

FOR ELECTRICAL TORQUE SPECIFICATIONS SEE DWG NO. 128783-01-000

FOR ELECTRICAL CALLOUTS SEE DWG NO. 121339-01-000

265 CODES/STANDARDS-CSA/CMVSS
1B1 CODES/STANDARDS USA

1B1 265

COPYRIGHT 2016 WINNEBAGO INDUSTRIES, INC.

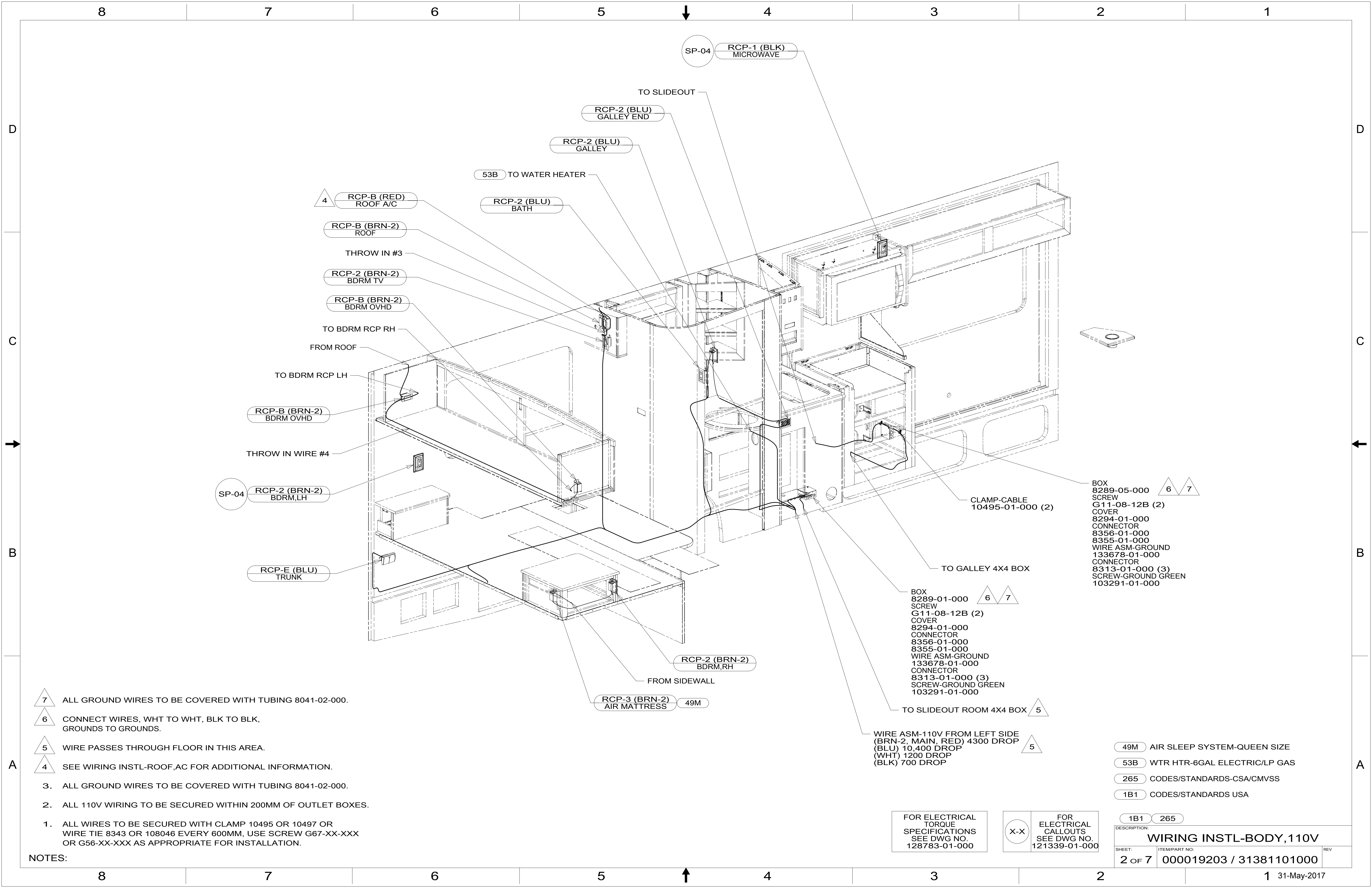
DSNR:	ALL DIMENSIONS ARE IN MILLIMETERS
DFFR:	MATERIAL:
UNSPECIFIED TOLERANCES:	WEIGHT: (LBS)
WHOLE DIM (X) : 3	FIRST USED:
ONE-PLACE (X.X) : 1.5	17 730J
TWO-PLACE (X.XX) : 0.50	
ANGLE : 1°	

REFER TO ES0018 FOR FASTENER TIGHTENING GUIDELINES

DESCRIPTION: **WIRING INSTL-BODY, 110V**

SHEET: 1 OF 7 ITEM/PART NO.: 000019203 / 31381101000 REF: 1 31-May-2017

8 7 6 5 4 3 2 1



- 7 ALL GROUND WIRES TO BE COVERED WITH TUBING 8041-02-000.
 - 6 CONNECT WIRES, WHT TO WHT, BLK TO BLK, GROUNDS TO GROUNDS.
 - 5 WIRE PASSES THROUGH FLOOR IN THIS AREA.
 - 4 SEE WIRING INSTL-ROOF,AC FOR ADDITIONAL INFORMATION.
3. ALL GROUND WIRES TO BE COVERED WITH TUBING 8041-02-000.
 2. ALL 110V WIRING TO BE SECURED WITHIN 200MM OF OUTLET BOXES.
 1. ALL WIRES TO BE SECURED WITH CLAMP 10495 OR 10497 OR WIRE TIE 8343 OR 108046 EVERY 600MM, USE SCREW G67-XX-XXX OR G56-XX-XXX AS APPROPRIATE FOR INSTALLATION.

NOTES:

FOR ELECTRICAL TORQUE SPECIFICATIONS SEE DWG NO. 128783-01-000

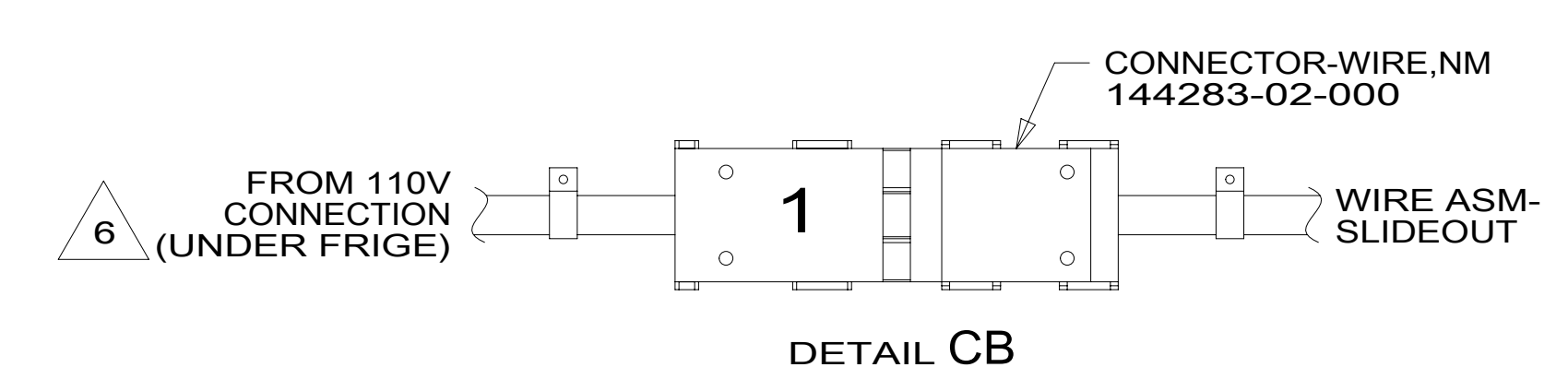
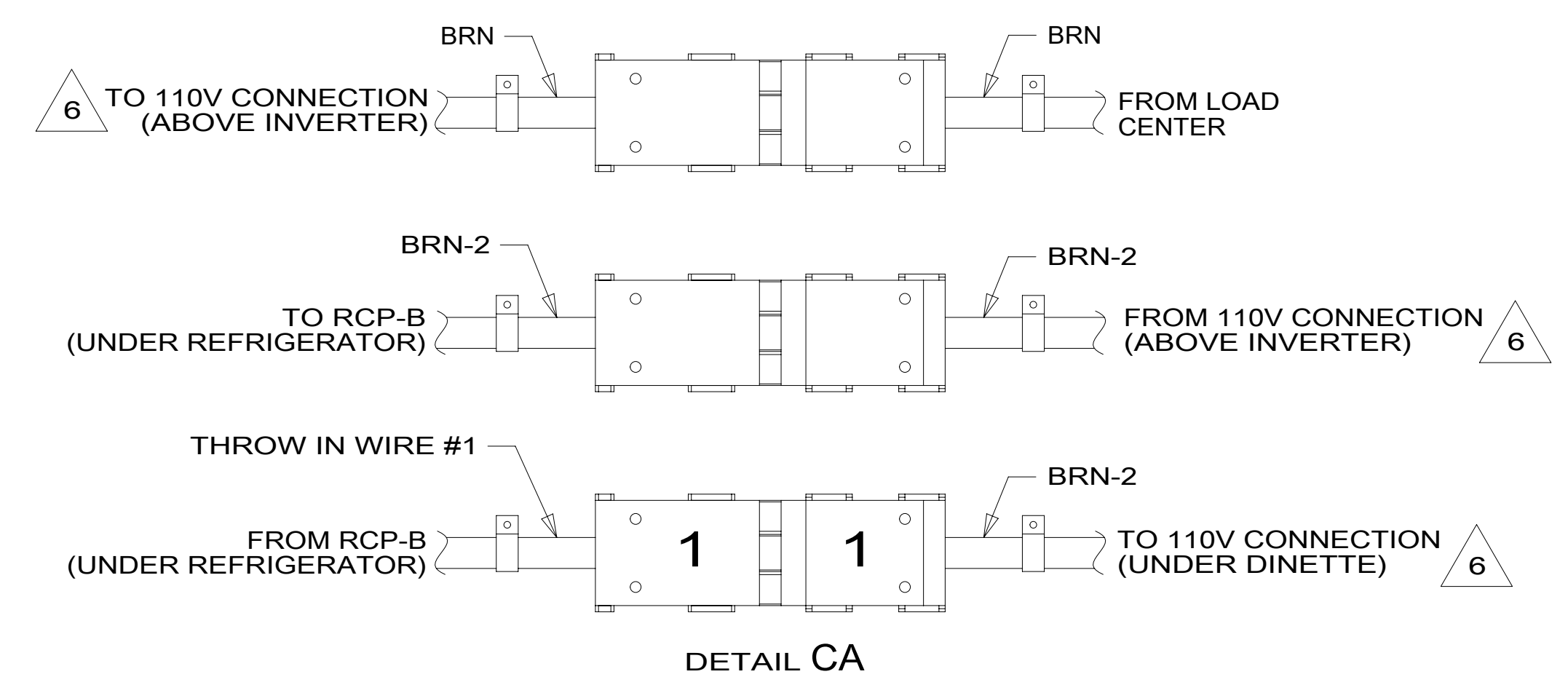
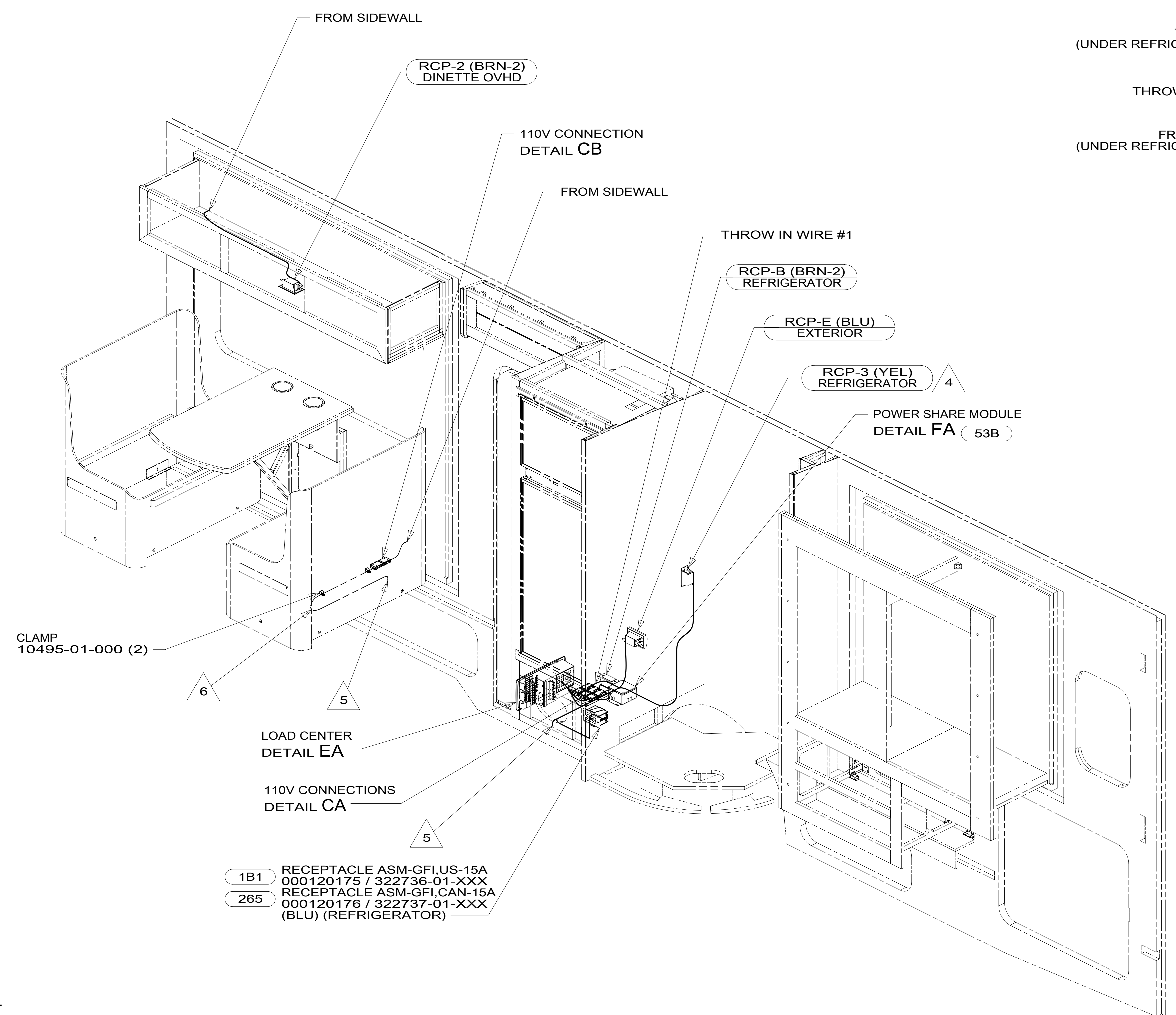
FOR ELECTRICAL CALLOUTS SEE DWG NO. 121339-01-000

- 49M AIR SLEEP SYSTEM-QUEEN SIZE
- 53B WTR HTR-6GAL ELECTRIC/LP GAS
- 265 CODES/STANDARDS-CSA/CMVSS
- 1B1 CODES/STANDARDS USA

DESCRIPTION:		1B1 265	
WIRING INSTL-BODY, 110V			
SHEET:	ITEM/PART NO.:	REV	
2 OF 7	000019203 / 31381101000		

8 7 6 5 4 3 2 1

D
C
B
A



- 6 WIRE IS PART OF WIRE ASM-CHASSIS.
- 5 WIRE PASSES THROUGH FLOOR IN THIS AREA.
- 4 LOCATE RCP-REFRIGERATOR ON TIEDOWN STRAP.

- 3. ALL GROUND WIRES TO BE COVERED WITH TUBING 8041-02-000.
- 2. ALL 110V WIRING TO BE SECURED WITHIN 200MM OF OUTLET BOXES.
- 1. ALL WIRES TO BE SECURED WITH CLAMP 10495 OR 10497 OR WIRE TIE 8343 OR 108046 EVERY 600MM, USE SCREW G67-XX-XXX OR G56-XX-XXX AS APPROPRIATE FOR INSTALLATION.

NOTES:

FOR ELECTRICAL TORQUE SPECIFICATIONS SEE DWG NO. 128783-01-000

FOR ELECTRICAL CALLOUTS SEE DWG NO. 121339-01-000

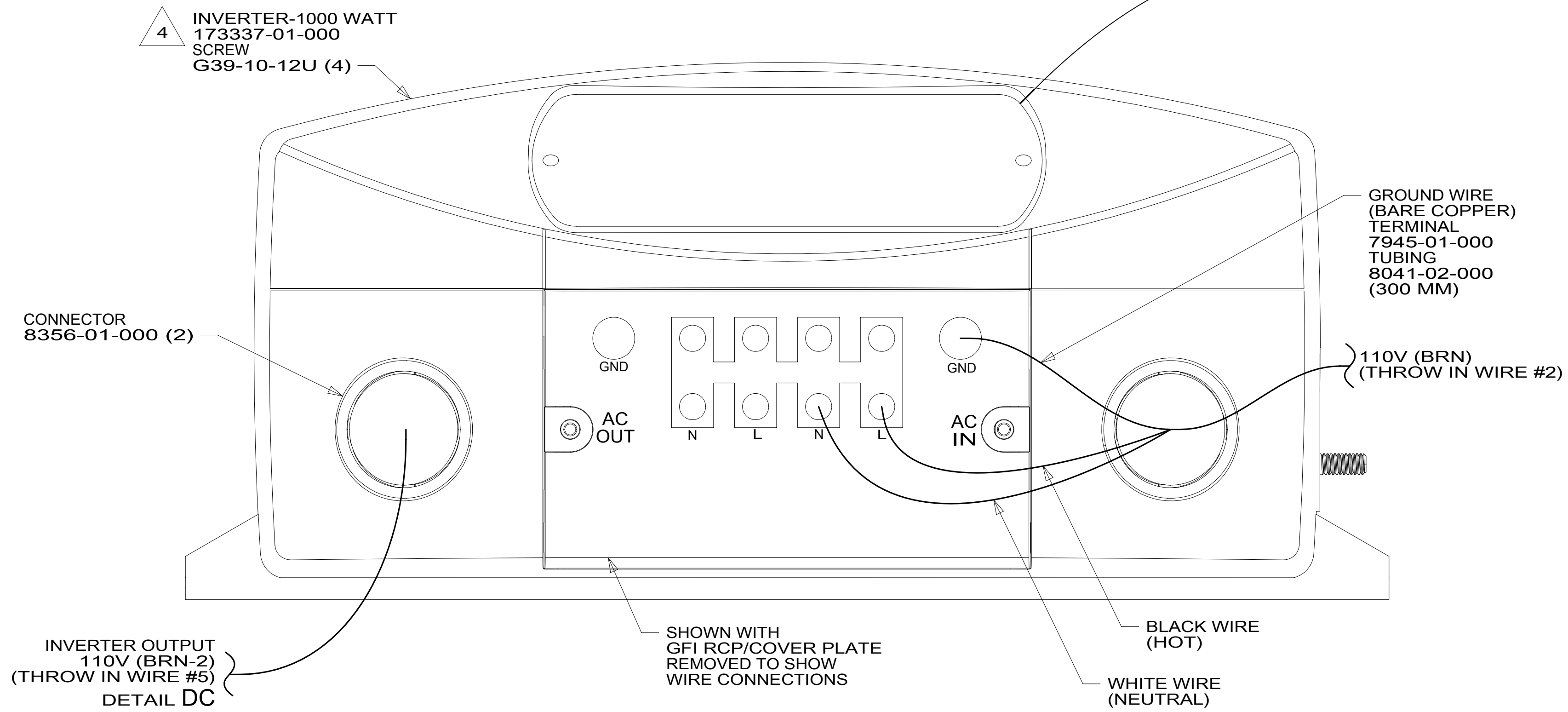
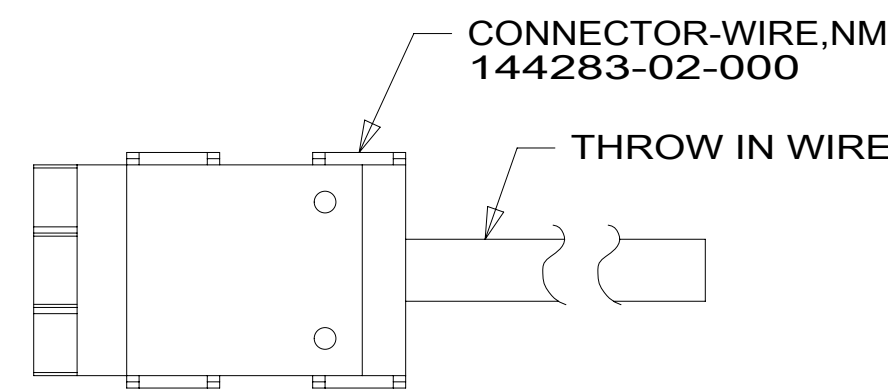
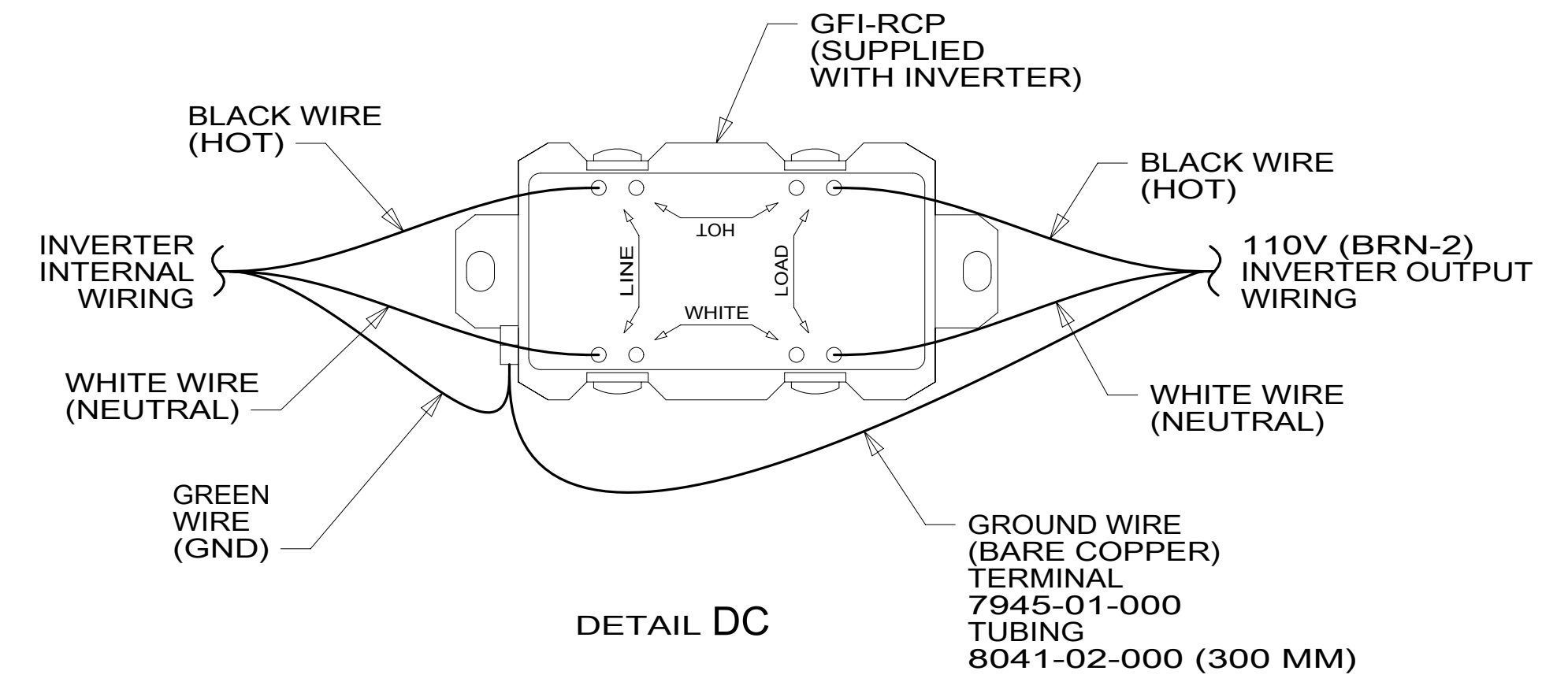
- 53B WTR HTR-6GAL ELECTRIC/LP GAS
- 265 CODES/STANDARDS-CSA/CMVSS
- 1B1 CODES/STANDARDS USA

DESCRIPTION:		1B1 265	
WIRING INSTL-BODY, 110V			
SHEET:	ITEM/PART NO.:	REV:	
3 OF 7	000019203 / 31381101000		

8 7 6 5 4 3 2 1 31-May-2017

RED	1B1	136135-07-057
	265	136136-07-057
YEL	1B1	136131-05-015
	265	136134-05-015
BLK	1B1	136135-06-014 53B
		136135-06-023 1BU
	265	136136-06-014 53B
		136136-06-023 1BU
BLK-2	1B1	136135-22-027 53B
	265	136136-22-027 53B
BRN	1B1	136131-03-010 2
	265	136134-03-010 2
BRN-2	1B1	136131-19-057 2
	265	136134-19-057 2
BLU	1B1	136131-02-150
	265	136134-02-150
WHT	1B1	136135-09-031 53B
	265	136136-09-031 53B
MAIN	1B1	136137-01-063
	265	136138-01-063

GENERATOR CABLE ASM	1B1	164957-09-069
	265	164957-10-069
THROW IN #1	1B1	136131-19-007 3 2
	265	136134-19-007 3 2
THROW IN #2	1B1	136131-03-007 2 5
	265	136134-03-007 2 5
THROW IN #3	1B1	136131-19-008
	265	136134-19-008
THROW IN #4	1B1	136131-19-032
	265	136134-19-032
THROW IN #5	1B1	136131-19-009 2 5
	265	136134-19-009 2 5
ATS GND		136145-01-012
GROUND		136145-02-015



- 5 FOR ADDITIONAL INFORMATION SEE DETAIL DB.
- 4 INVERTER SUPPLIED WITH REMOTE PANEL. SEND PANEL TO MANUFACTURING LINE.
- 3 WITH BLACK PERMANENT MARKER, IDENTIFY MOLEX HOUSING WITH #1.
- 2 FOR CONNECTOR INSTALLATION SEE DETAIL DA.

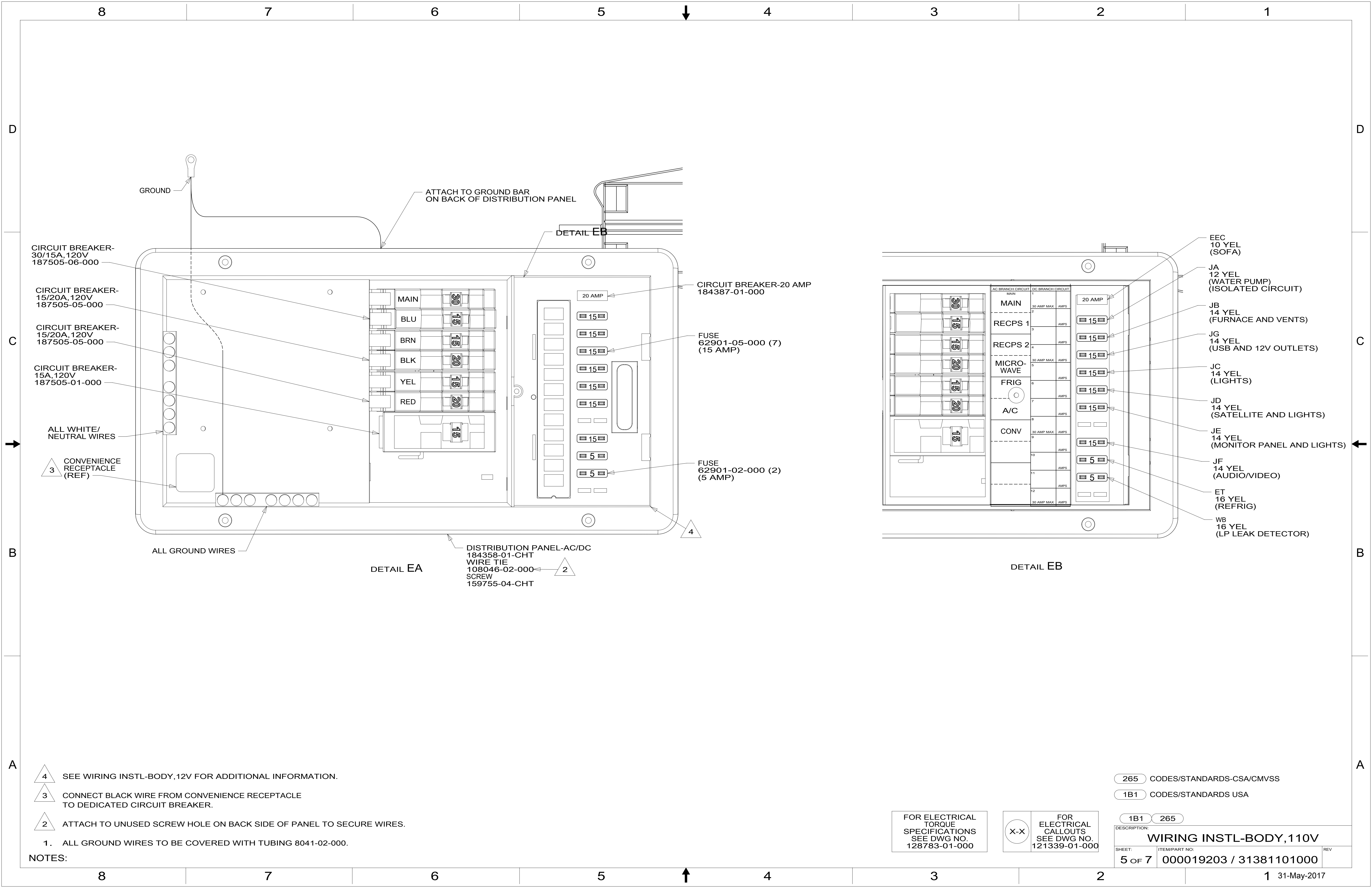
NOTES:
1. ALL GROUND WIRES TO BE COVERED WITH TUBING 8041-02-000.

FOR ELECTRICAL TORQUE SPECIFICATIONS SEE DWG NO. 128783-01-000

FOR ELECTRICAL CALLOUTS SEE DWG NO. 121339-01-000

- 1BU WATER HEATER, TANKLESS
- 53B WTR HTR-6GAL ELECTRIC/LP GAS
- 265 CODES/STANDARDS-CSA/CMVSS
- 1B1 CODES/STANDARDS USA

1B1	265
DESCRIPTION: WIRING INSTL-BODY, 110V	
SHEET: 4 OF 7	ITEM/PART NO: 000019203 / 31381101000
REV 1 31-May-2017	



CIRCUIT BREAKER-30/15A, 120V
187505-06-000

CIRCUIT BREAKER-15/20A, 120V
187505-05-000

CIRCUIT BREAKER-15/20A, 120V
187505-05-000

CIRCUIT BREAKER-15A, 120V
187505-01-000

ALL WHITE/NEUTRAL WIRES

3 CONVENIENCE RECEPTACLE (REF)

GROUND

ATTACH TO GROUND BAR ON BACK OF DISTRIBUTION PANEL

DETAIL EB

CIRCUIT BREAKER-20 AMP
184387-01-000

FUSE 62901-05-000 (7)
(15 AMP)

FUSE 62901-02-000 (2)
(5 AMP)

ALL GROUND WIRES

DETAIL EA

DISTRIBUTION PANEL-AC/DC
184358-01-CHT
WIRE TIE
108046-02-000
SCREW
159755-04-CHT

DETAIL EB

EEC
10 YEL
(SOFA)

JA
12 YEL
(WATER PUMP)
(ISOLATED CIRCUIT)

JB
14 YEL
(FURNACE AND VENTS)

JG
14 YEL
(USB AND 12V OUTLETS)

JC
14 YEL
(LIGHTS)

JD
14 YEL
(SATELLITE AND LIGHTS)

JE
14 YEL
(MONITOR PANEL AND LIGHTS)

JF
14 YEL
(AUDIO/VIDEO)

ET
16 YEL
(REFRIG)

WB
16 YEL
(LP LEAK DETECTOR)

4 SEE WIRING INSTL-BODY, 12V FOR ADDITIONAL INFORMATION.

3 CONNECT BLACK WIRE FROM CONVENIENCE RECEPTACLE TO DEDICATED CIRCUIT BREAKER.

2 ATTACH TO UNUSED SCREW HOLE ON BACK SIDE OF PANEL TO SECURE WIRES.

1. ALL GROUND WIRES TO BE COVERED WITH TUBING 8041-02-000.

NOTES:

265 CODES/STANDARDS-CSA/CMVSS

1B1 CODES/STANDARDS USA

1B1 265

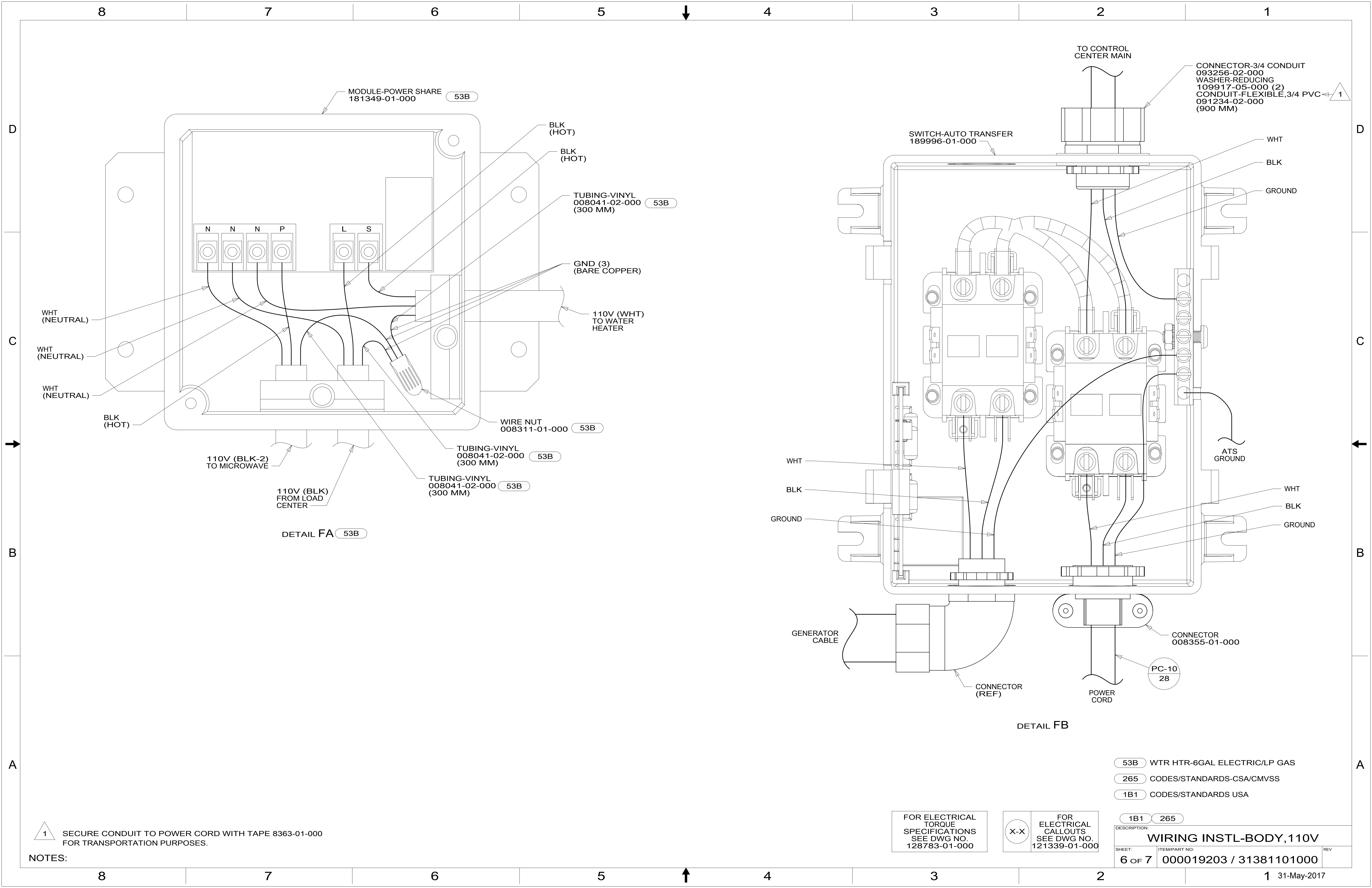
FOR ELECTRICAL TORQUE SPECIFICATIONS SEE DWG NO. 128783-01-000

FOR ELECTRICAL CALLOUTS SEE DWG NO. 121339-01-000

DESCRIPTION:
WIRING INSTL-BODY, 110V

SHEET: 5 OF 7 ITEM/PART NO.: 000019203 / 31381101000 REV

1 31-May-2017



1 SECURE CONDUIT TO POWER CORD WITH TAPE 8363-01-000 FOR TRANSPORTATION PURPOSES.

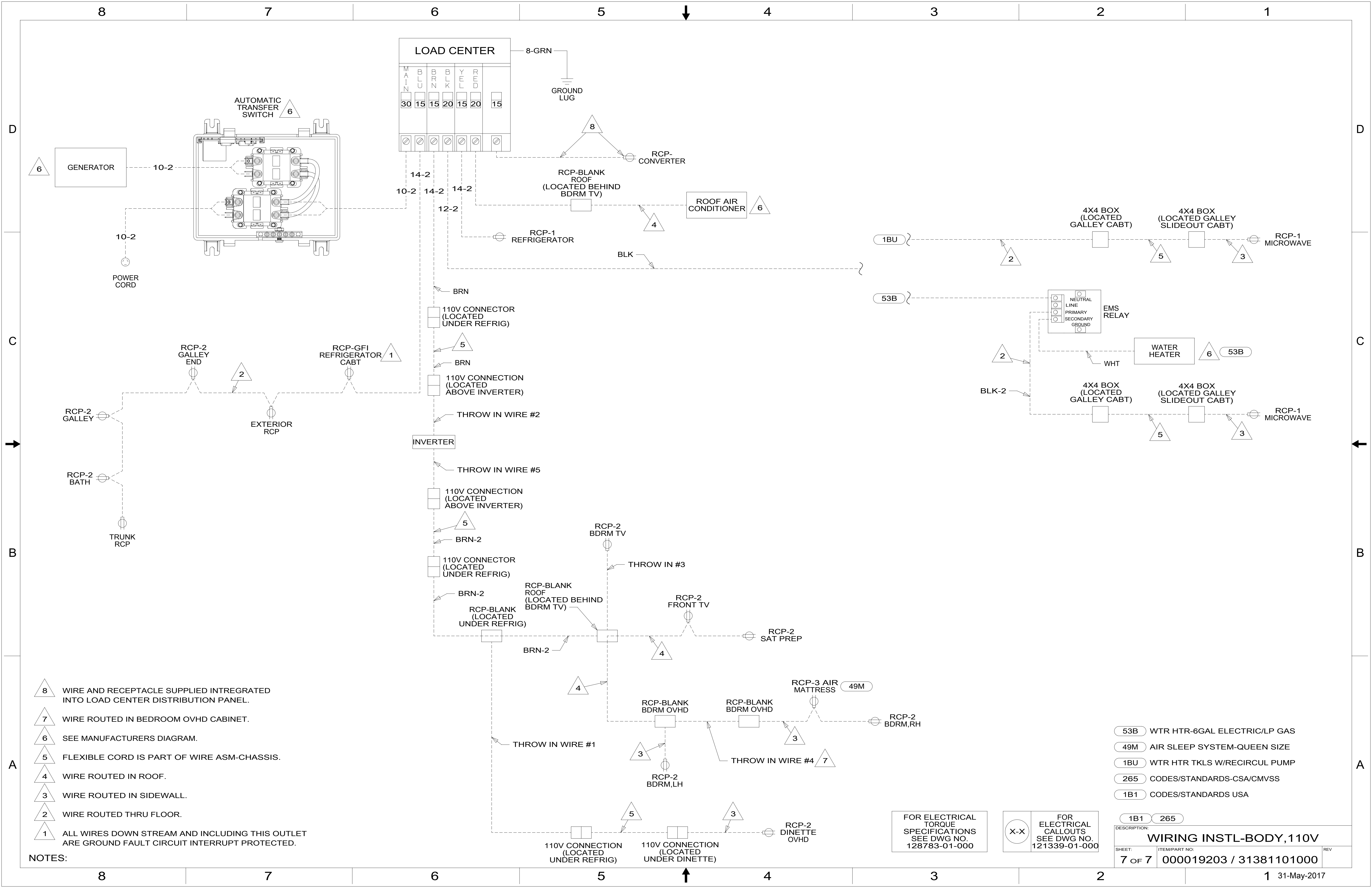
NOTES:

FOR ELECTRICAL TORQUE SPECIFICATIONS SEE DWG NO. 128783-01-000

FOR ELECTRICAL CALLOUTS SEE DWG NO. 121339-01-000

- 53B WTR HTR-6GAL ELECTRIC/LP GAS
- 265 CODES/STANDARDS-CSA/CMVSS
- 1B1 CODES/STANDARDS USA

DESCRIPTION:	
1B1 265 WIRING INSTL-BODY, 110V	
SHEET:	ITEM/PART NO.:
6 OF 7	000019203 / 31381101000
REV	
1 31-May-2017	



- NOTES:
- 8 WIRE AND RECEPTACLE SUPPLIED INTREGATED INTO LOAD CENTER DISTRIBUTION PANEL.
 - 7 WIRE ROUTED IN BEDROOM OVHD CABINET.
 - 6 SEE MANUFACTURERS DIAGRAM.
 - 5 FLEXIBLE CORD IS PART OF WIRE ASM-CHASSIS.
 - 4 WIRE ROUTED IN ROOF.
 - 3 WIRE ROUTED IN SIDEWALL.
 - 2 WIRE ROUTED THRU FLOOR.
 - 1 ALL WIRES DOWN STREAM AND INCLUDING THIS OUTLET ARE GROUND FAULT CIRCUIT INTERRUPT PROTECTED.

- 53B WTR HTR-6GAL ELECTRIC/LP GAS
- 49M AIR SLEEP SYSTEM-QUEEN SIZE
- 1BU WTR HTR TKLS W/RECIRCUL PUMP
- 265 CODES/STANDARDS-CSA/CMVSS
- 1B1 CODES/STANDARDS USA

FOR ELECTRICAL TORQUE SPECIFICATIONS SEE DWG NO. 128783-01-000

FOR ELECTRICAL CALLOUTS SEE DWG NO. 121339-01-000

DESCRIPTION:		1B1 265	
WIRING INSTL-BODY, 110V			
SHEET:	ITEM/PART NO.:	REV:	
7 OF 7	000019203 / 31381101000		