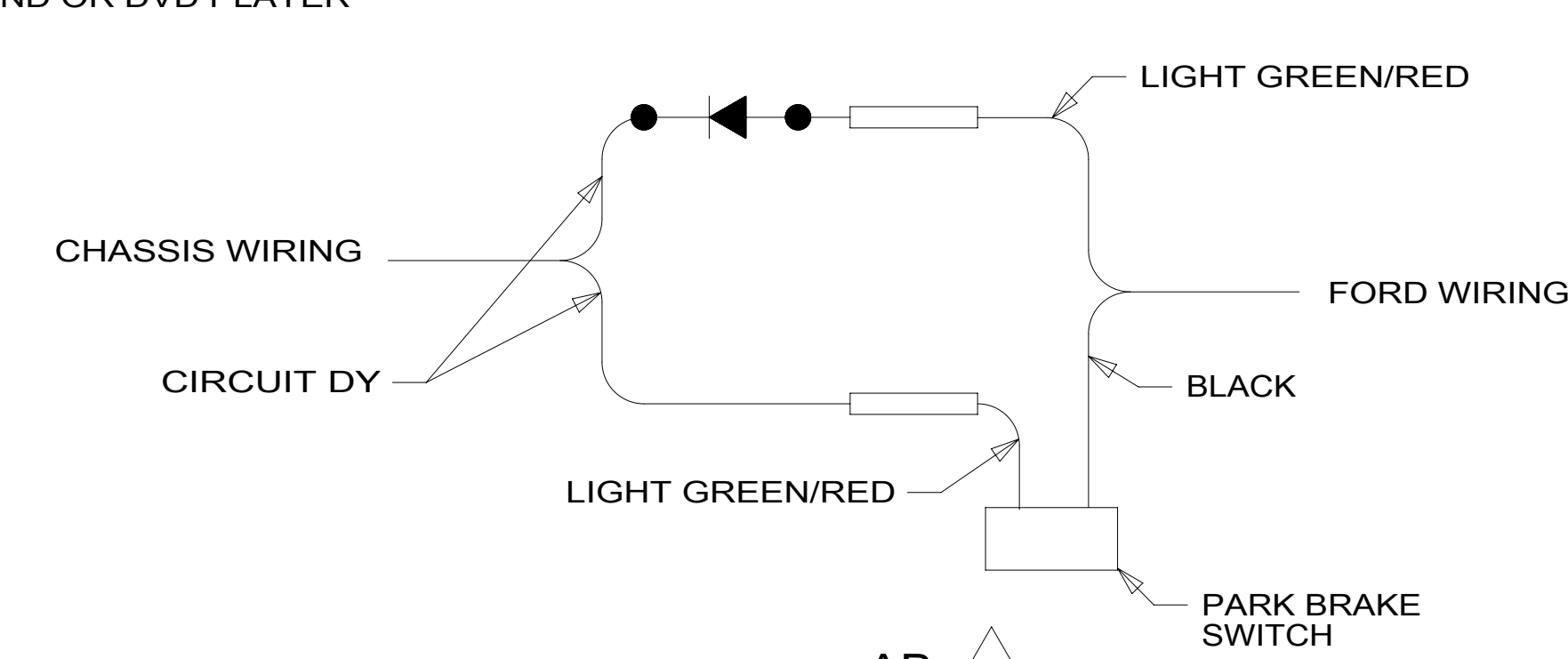


- 6 COIL EXCESS CAMERA CABLE HERE FOR TRANSPORTATION PURPOSES.
 - 5 ROUTE WITH WIRE ASM-CHASSIS.
 - 4 LOCATED UNDER DASH BY STEERING COLUMN.
 - 3 CUT LIGHT GREEN/RED WIRE FROM PARK BRAKE SWITCH AND RECONNECT TO CIRCUIT DY OF CHASSIS ASM AS SHOWN.
2. SECURE CONDUIT 41953, TAB AS REQUIRED, OVER ALL WIRES IN CONTACT WITH SHARP EDGES.
 1. USE WIRE TIES 8343-04-000 AND 116673-02-000 APPROXIMATELY 600MM ON CENTER UNLESS OTHERWISE SPECIFIED.

NOTES:



FOR ELECTRICAL TORQUE SPECIFICATIONS SEE DWG NO. 128783-01-000

FOR ELECTRICAL CALLOUTS SEE DWG NO. 121339-01-000

- 15D INFOTAINMENT CENTER/GPS
- 19R RADIO/REARVIEW MONITOR SYS
- 60M HYDRAULIC LEVEL JACKS-AUTO
- 265 CODES/STANDARDS-CSA/CMVSS
- 1B1 CODES/STANDARDS USA

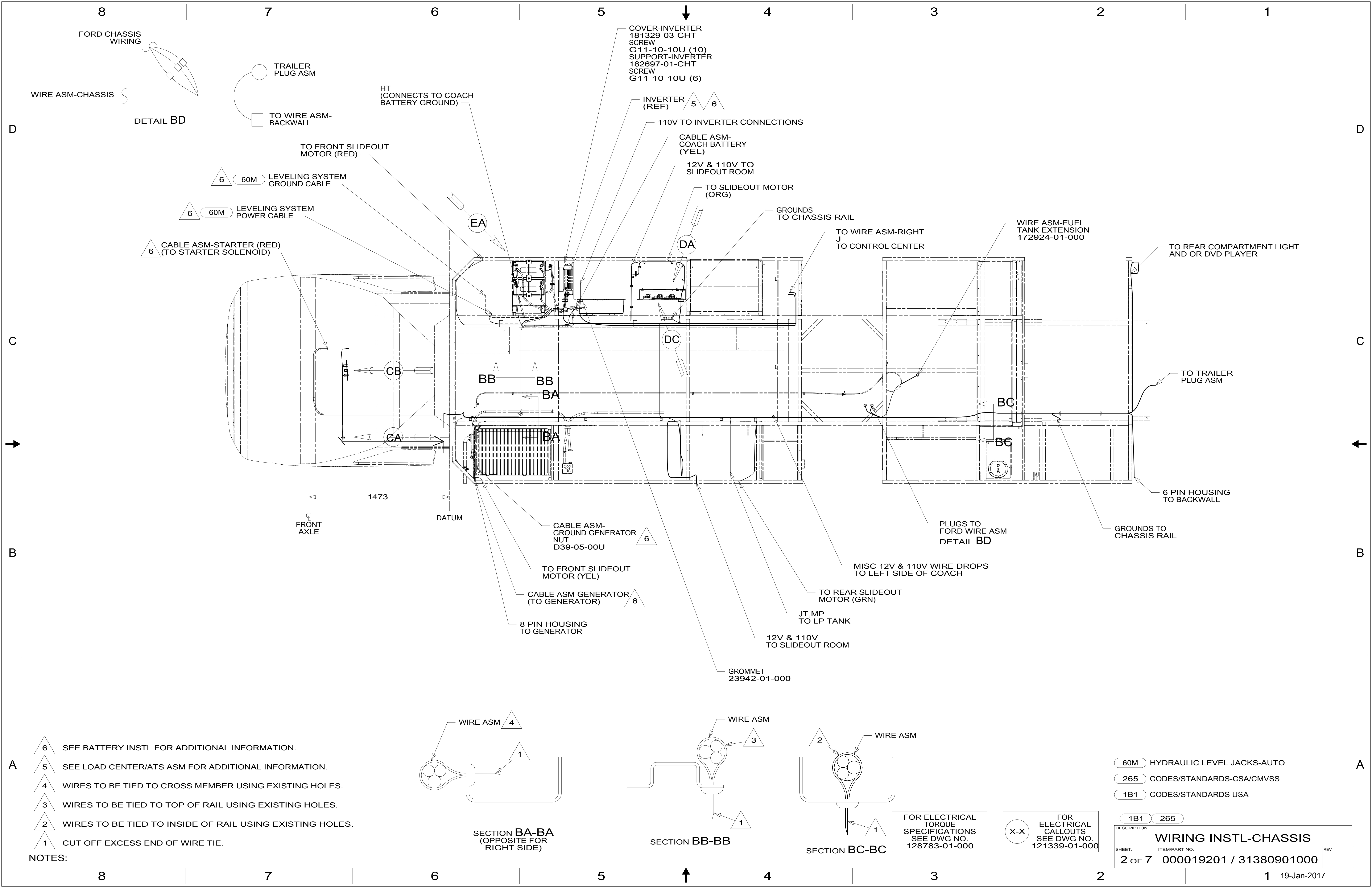
WINNEBAGO
COPYRIGHT 2016 WINNEBAGO INDUSTRIES, INC.

DSNR:	ALL DIMENSIONS ARE IN MILLIMETERS
DFFR:	MATERIAL:
UNSPECIFIED TOLERANCES:	WEIGHT: (LBS)
WHOLE DIM (X) : 3	FIRST USED: 17 730J
ONE-PLACE (X.X) : 1.5	
TWO-PLACE (X.XX) : 0.50	
ANGLE : 1°	

REFER TO ES0018 FOR FASTENER TIGHTENING GUIDELINES

DESCRIPTION: **WIRING INSTL-CHASSIS**

SHEET: 1 OF 7 ITEM/PART NO.: 000019201 / 31380901000 REV: REF: 1



COVER-INVERTER
181329-03-CHT
SCREW
G11-10-10U (10)
SUPPORT-INVERTER
182697-01-CHT
SCREW
G11-10-10U (6)

INVERTER (REF) 5 6

110V TO INVERTER CONNECTIONS

CABLE ASM-COACH BATTERY (YEL)

12V & 110V TO SLIDEOUT ROOM

TO SLIDEOUT MOTOR (ORG)

GROUNDS TO CHASSIS RAIL

TO WIRE ASM-RIGHT J TO CONTROL CENTER

WIRE ASM-FUEL TANK EXTENSION 172924-01-000

TO REAR COMPARTMENT LIGHT AND OR DVD PLAYER

TO TRAILER PLUG ASM

6 PIN HOUSING TO BACKWALL

GROUNDS TO CHASSIS RAIL

MISC 12V & 110V WIRE DROPS TO LEFT SIDE OF COACH

TO REAR SLIDEOUT MOTOR (GRN)

JT,MP TO LP TANK

12V & 110V TO SLIDEOUT ROOM

GROMMET 23942-01-000

CABLE ASM-GROUND GENERATOR NUT D39-05-00U 6

TO FRONT SLIDEOUT MOTOR (YEL)

CABLE ASM-GENERATOR (TO GENERATOR) 6

8 PIN HOUSING TO GENERATOR

FRONT AXLE

DATUM

1473

CABLE ASM-STARTER (RED) (TO STARTER SOLENOID) 6

60M LEVELING SYSTEM POWER CABLE 6

60M LEVELING SYSTEM GROUND CABLE 6

TO FRONT SLIDEOUT MOTOR (RED)

TO WIRE ASM-BACKWALL

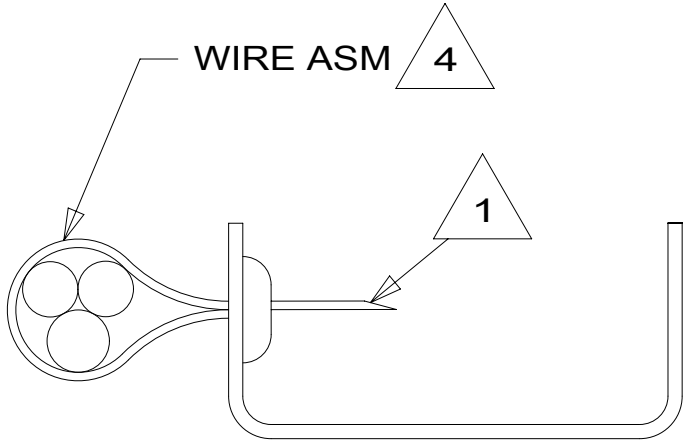
TRAILER PLUG ASM

FORD CHASSIS WIRING

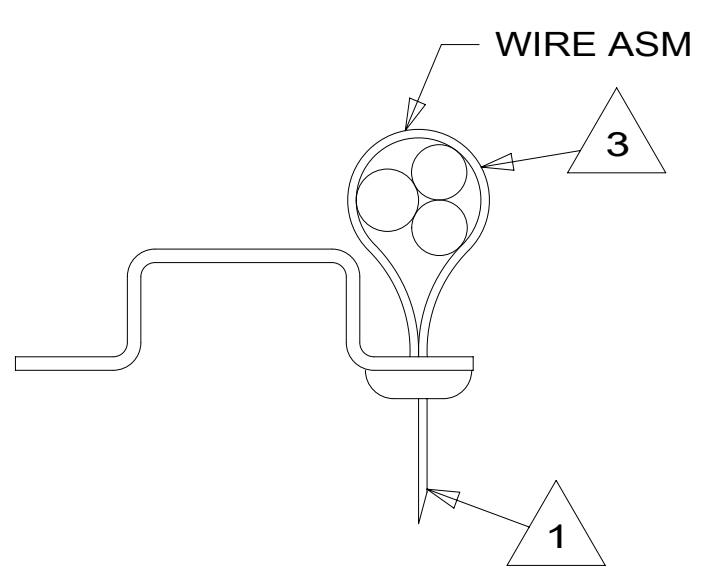
WIRE ASM-CHASSIS

DETAIL BD

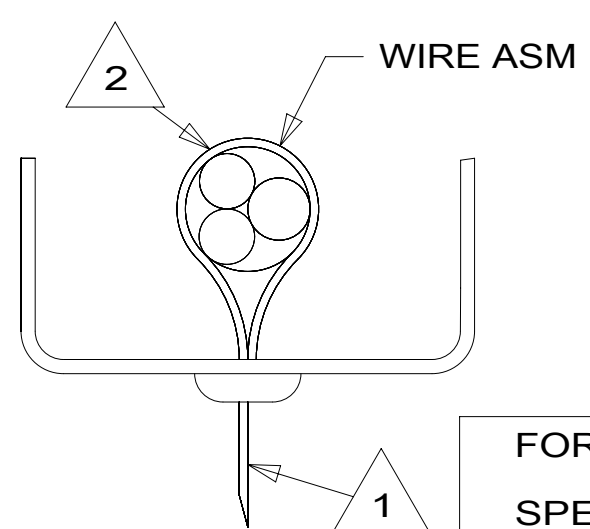
- NOTES:
- 6 SEE BATTERY INSTL FOR ADDITIONAL INFORMATION.
 - 5 SEE LOAD CENTER/ATS ASM FOR ADDITIONAL INFORMATION.
 - 4 WIRES TO BE TIED TO CROSS MEMBER USING EXISTING HOLES.
 - 3 WIRES TO BE TIED TO TOP OF RAIL USING EXISTING HOLES.
 - 2 WIRES TO BE TIED TO INSIDE OF RAIL USING EXISTING HOLES.
 - 1 CUT OFF EXCESS END OF WIRE TIE.



SECTION BA-BA (OPPOSITE FOR RIGHT SIDE)



SECTION BB-BB



SECTION BC-BC

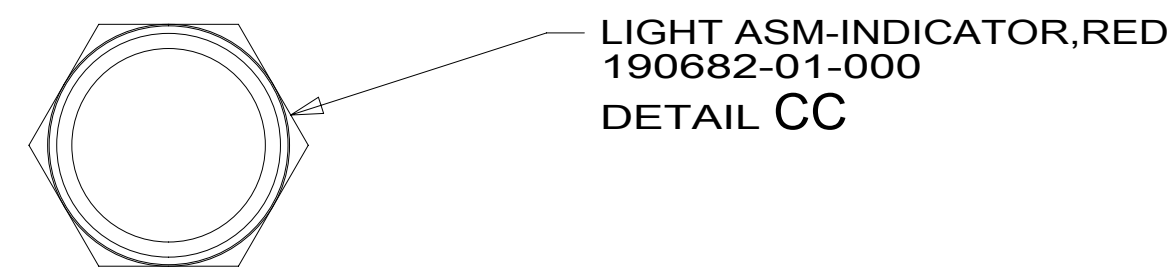
FOR ELECTRICAL TORQUE SPECIFICATIONS SEE DWG NO. 128783-01-000

X-X

FOR ELECTRICAL CALLOUTS SEE DWG NO. 121339-01-000

- 60M HYDRAULIC LEVEL JACKS-AUTO
- 265 CODES/STANDARDS-CSA/CMVSS
- 1B1 CODES/STANDARDS USA

DESCRIPTION: WIRING INSTL-CHASSIS		REV
SHEET: 2 OF 7	ITEM/PART NO: 000019201 / 31380901000	

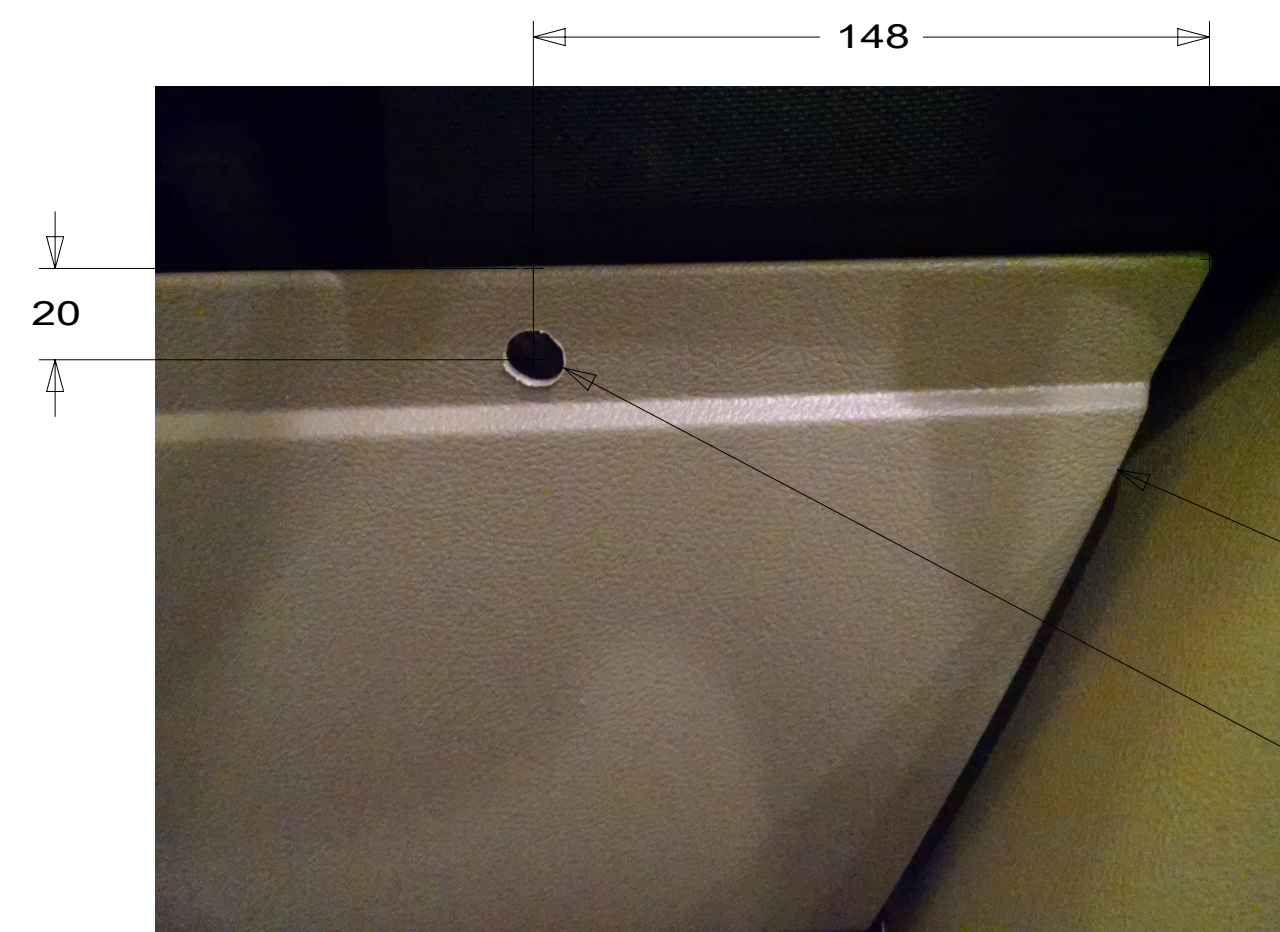


LIGHT ASM-INDICATOR, RED
190682-01-000
DETAIL CC

JACKS DOWN

LABEL-JACKS DOWN
133533-01-CHT

DETAIL CA 60M

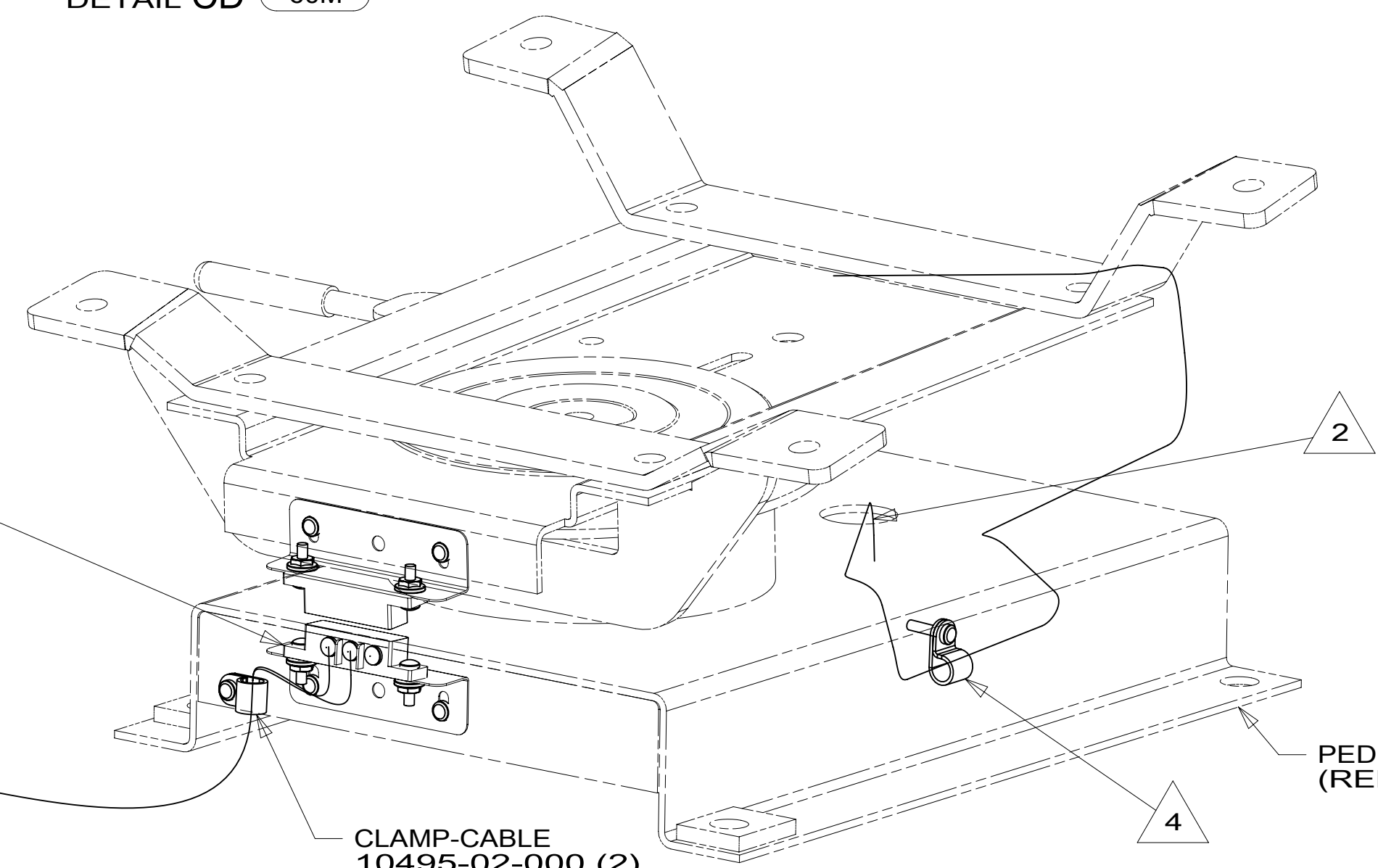


RIGHT SIDE OF
STEERING COLUMN

Ø 13

DETAIL CD 60M

BRACKET-SWITCH MOUNT
187994-01-CHT (2)
SCREW
G39-08-08U (4)
SWITCH-MAGNET
187753-01-CHT
SCREW-MACHINE
G18-08-10U (4)
NUT-HEX
D65-08-00U (4)
DETAIL CH

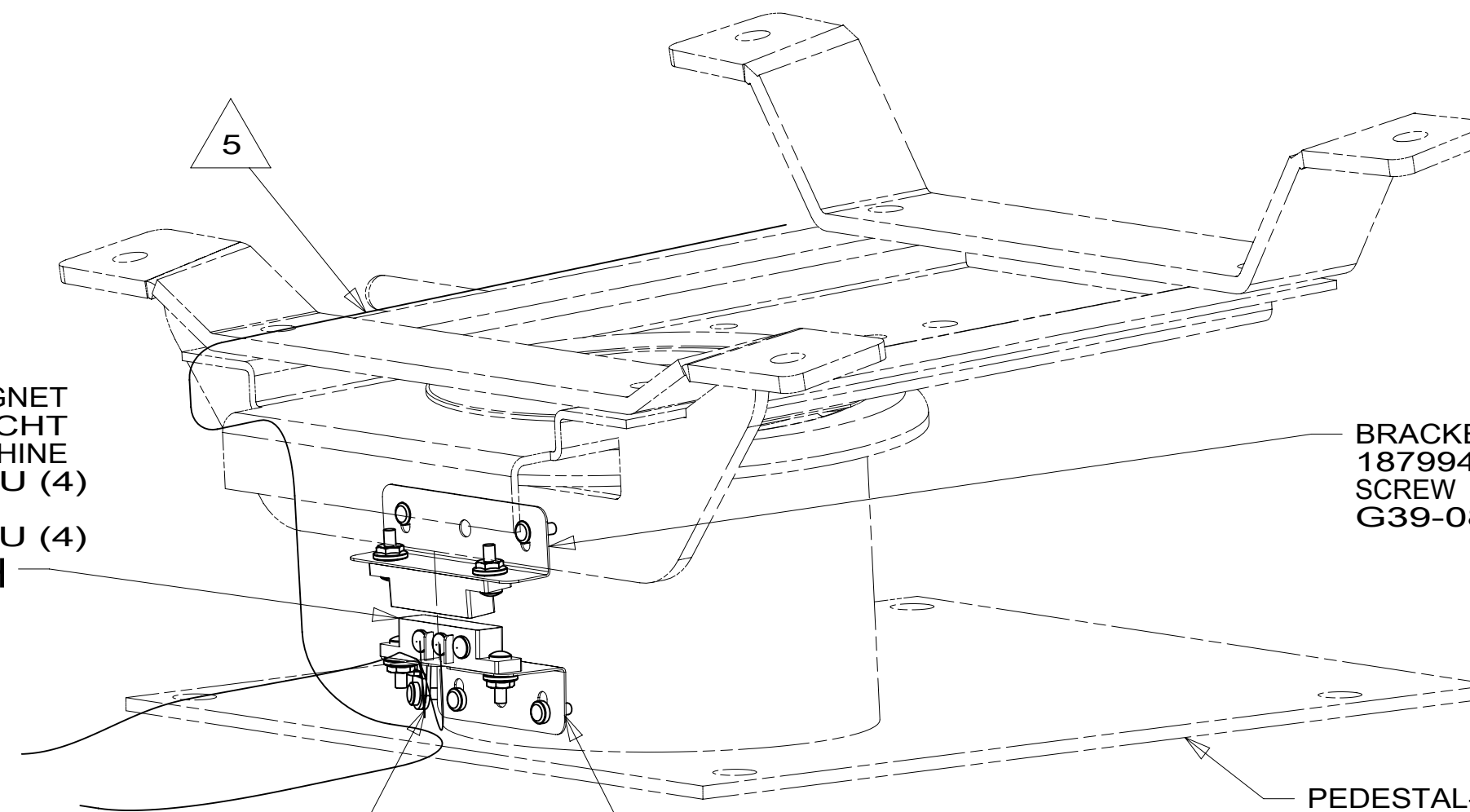


CLAMP-CABLE
10495-02-000 (2)
SCREW
G39-08-06U (2)

DETAIL CF

PEDESTAL-DRIVER
(REF)

SWITCH-MAGNET
187753-01-CHT
SCREW-MACHINE
G18-08-10U (4)
NUT-HEX
D65-08-00U (4)
DETAIL CH



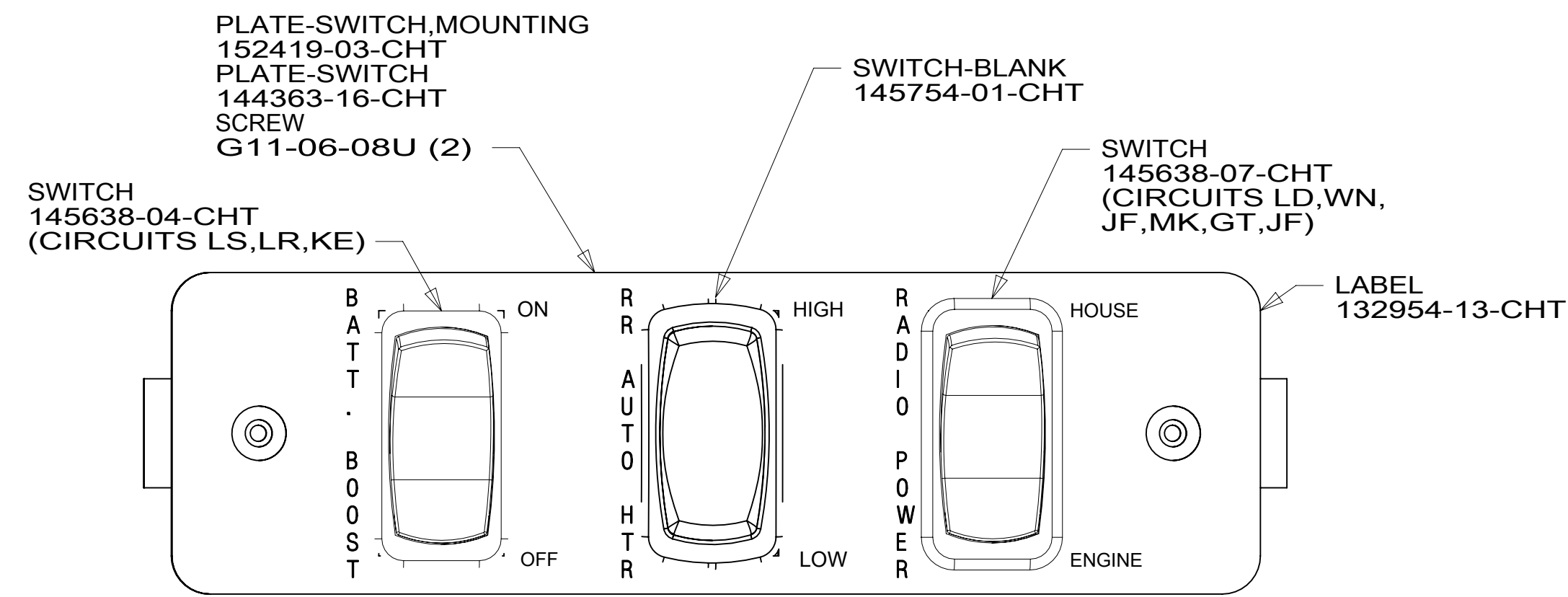
CLAMP-CABLE
10495-02-000
SCREW
G39-08-06U

DETAIL CG

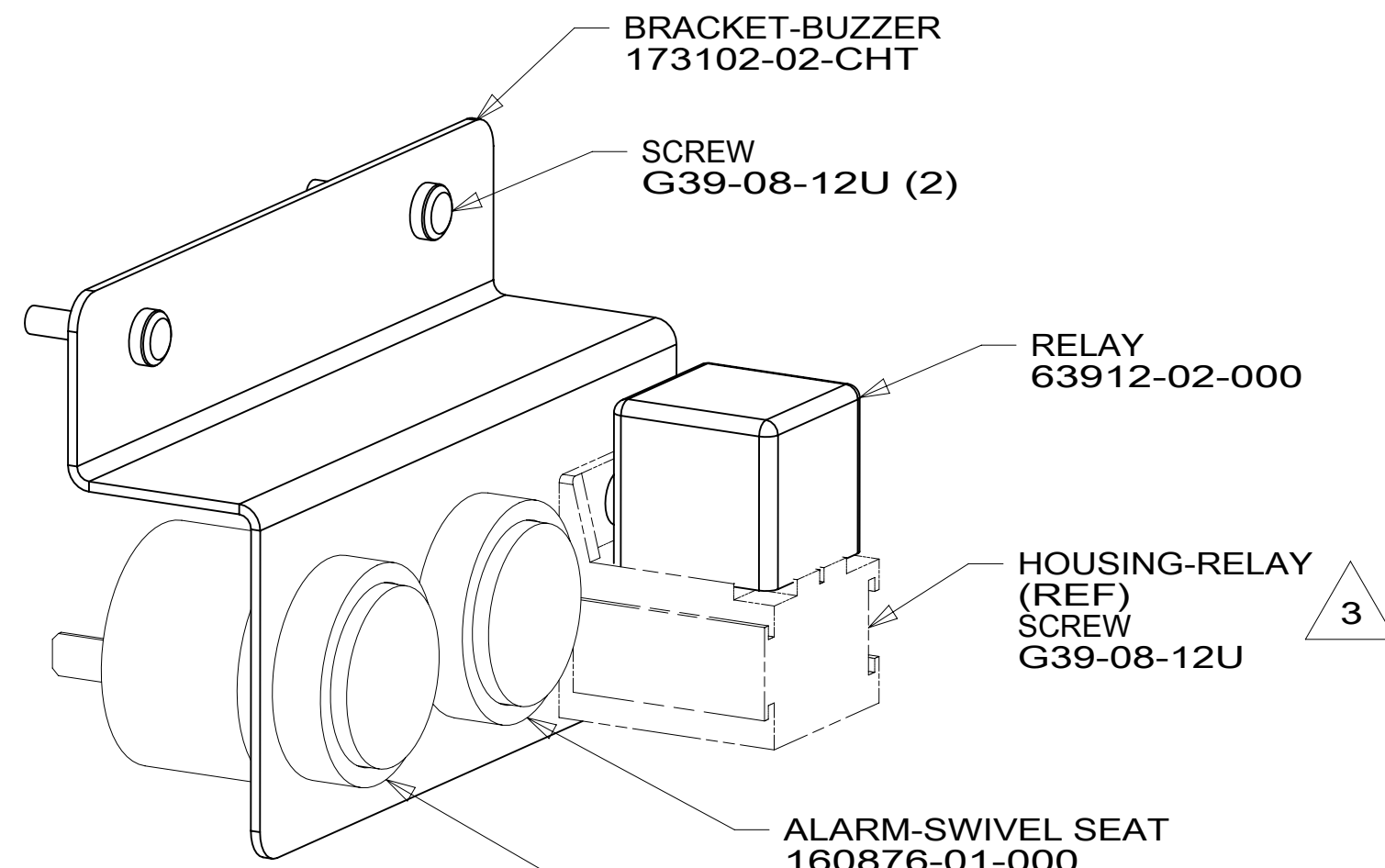
BRACKET-SWITCH MOUNT
187994-01-CHT
SCREW
G39-08-08U (2)

PEDESTAL-PASSENGER
(REF)

- NOTES:
- 5 ATTACH WIRE TIE 116673-01-000 TO FORD SEAT WIRING.
 - 4 INSTALL CLAMP FOR FORD SEAT WIRING.
 - 3 PART OF WIRE ASM-CHASSIS.
 - 2 COVER WIRING WITH CONVOLUTE 41953-01-000 (150 MM) TO PROTECT WIRES FROM SHARP EDGES WHERE THEY PASS THROUGH SEAT PEDESTAL. SECURE BOTH ENDS TO WIRES WITH TAPE 8363-01-000.
 - 1 FOR HOLE SIZE AND LOCATION SEE DETAIL CD.

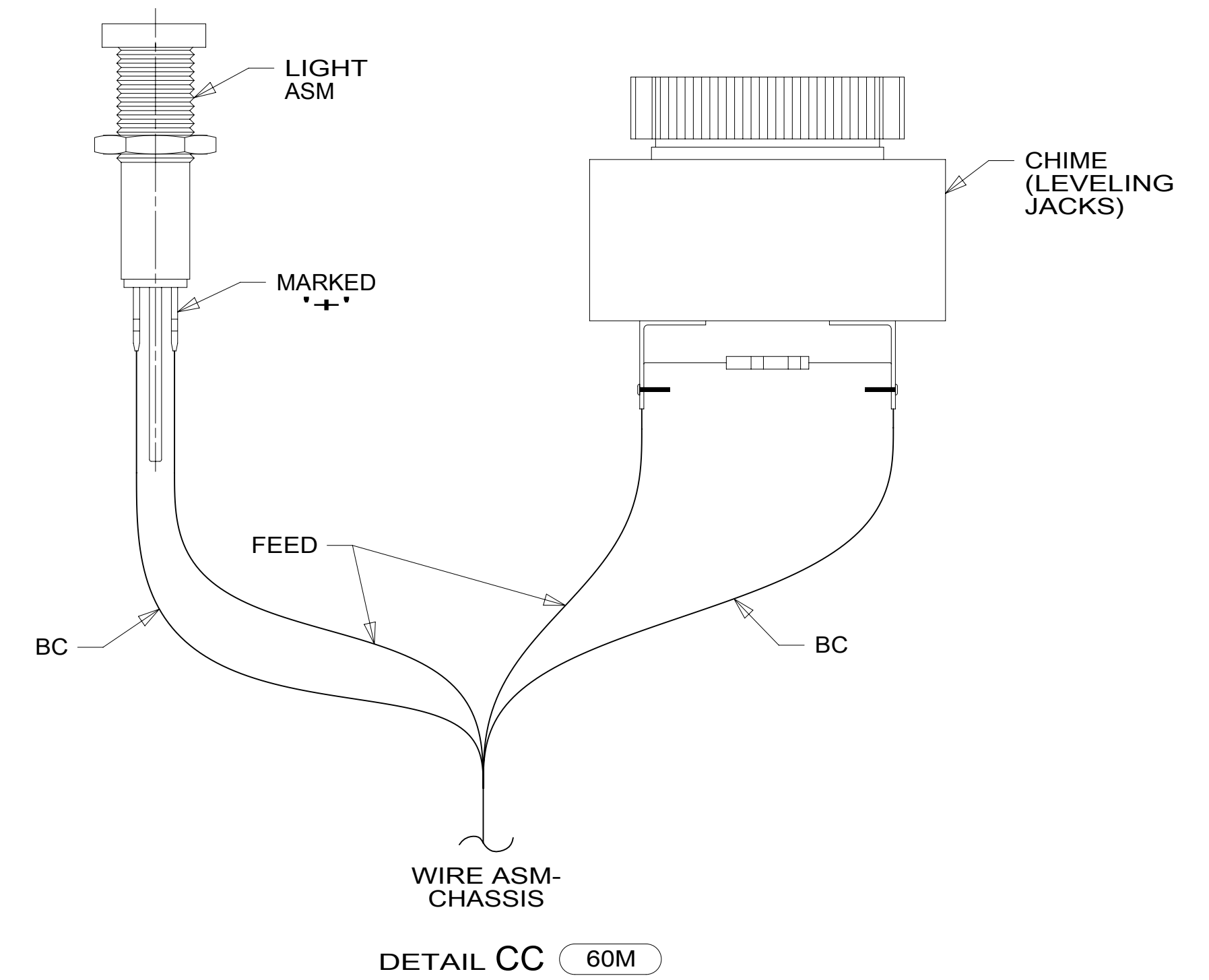


VIEW CB

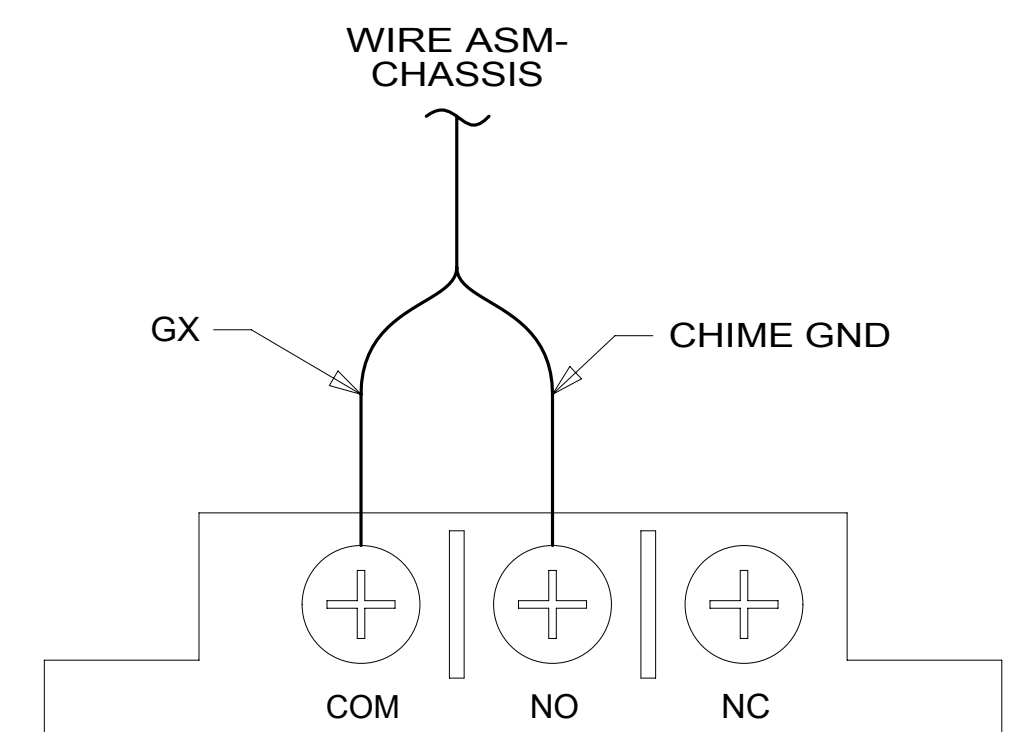


DETAIL CE

CHIME-JACKS DOWN
160876-01-000
DETAIL CC



DETAIL CC 60M



DETAIL CH

60M HYDRAULIC LEVEL JACKS-AUTO

265 CODES/STANDARDS-CSA/CMVSS

1B1 CODES/STANDARDS USA

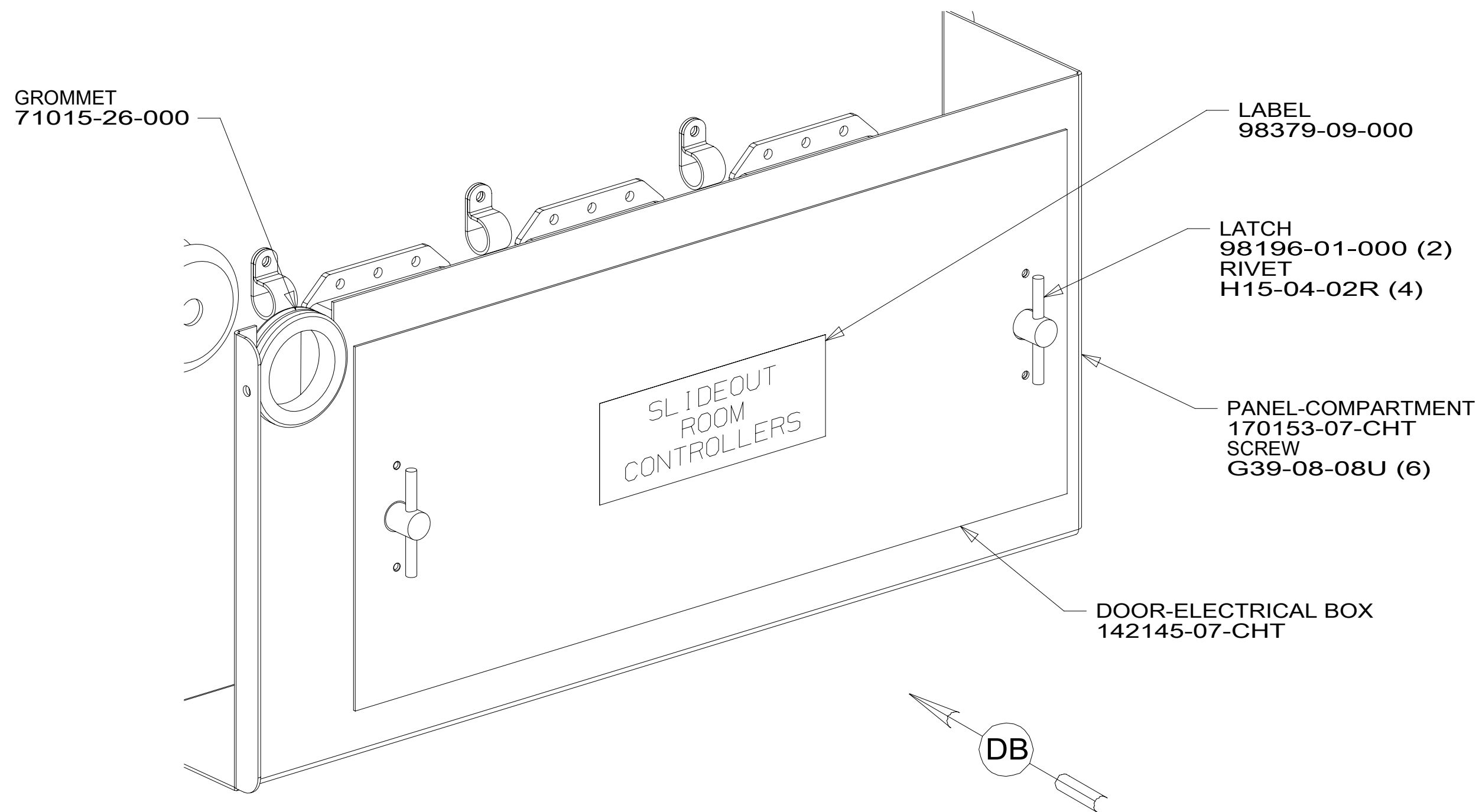
1B1 265

DESCRIPTION:
WIRING INSTL-CHASSIS

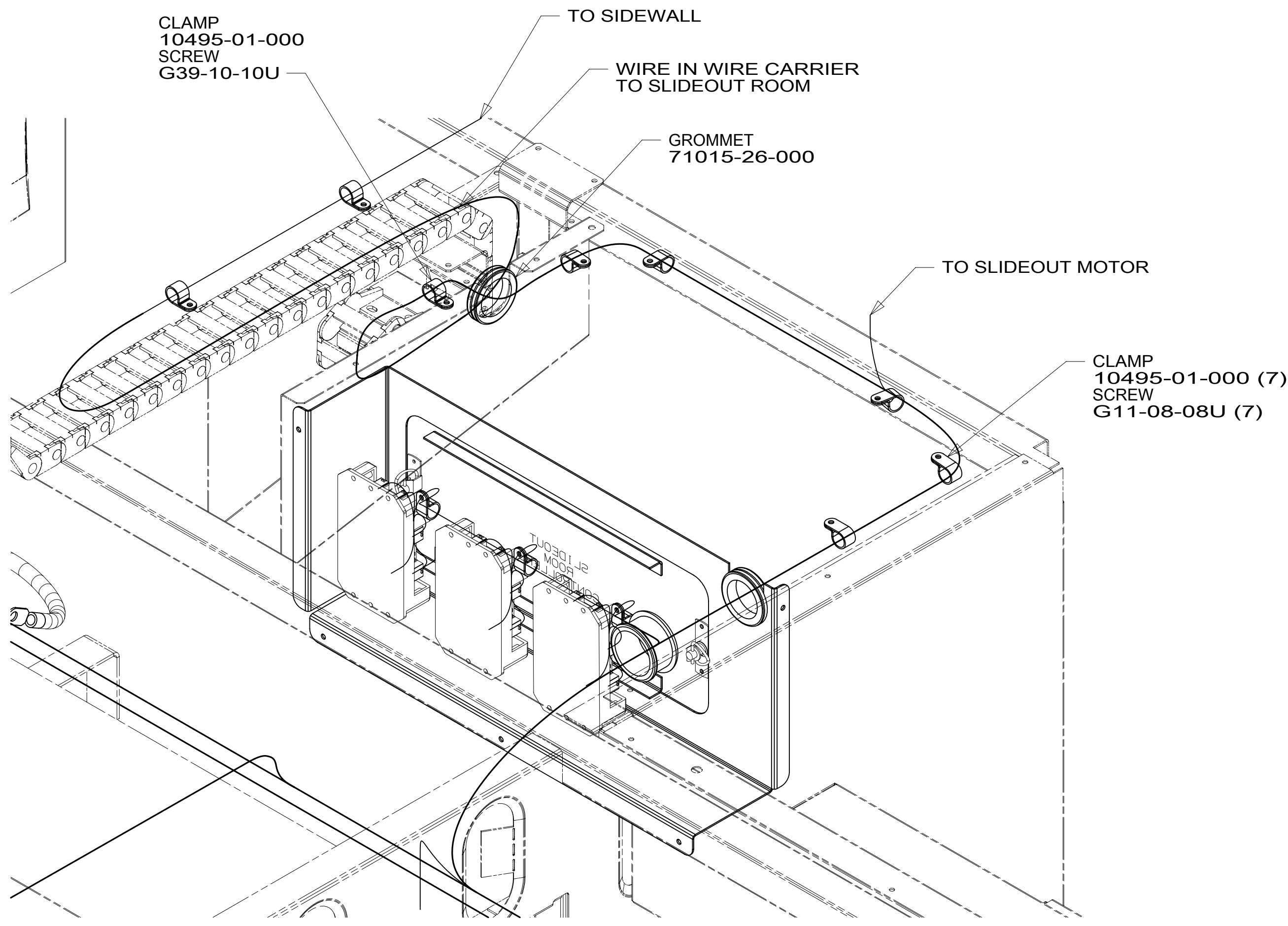
SHEET: 3 OF 7 ITEM/PART NO: 000019201 / 31380901000 REV

FOR ELECTRICAL
TORQUE
SPECIFICATIONS
SEE DWG NO.
128783-01-000

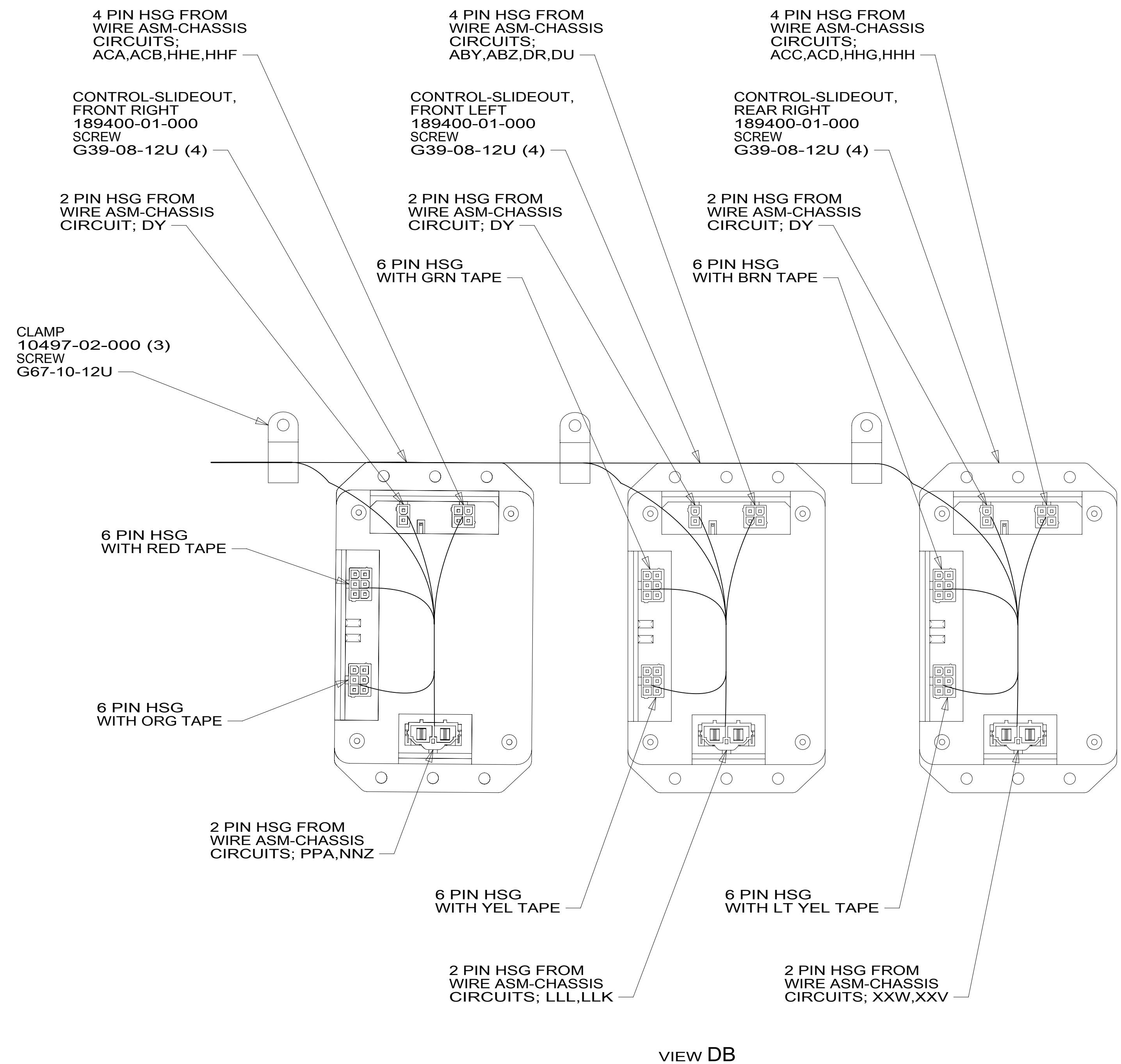
FOR
ELECTRICAL
CALLOUTS
SEE DWG NO.
121339-01-000



VIEW DA



VIEW DC



VIEW DB

- GROMMET 71015-26-000
- LATCH 98196-01-000 (2)
- RIVET H15-04-02R (4)
- PANEL-COMPARTMENT 170153-07-CHT SCREW G39-08-08U (6)
- DOOR-ELECTRICAL BOX 142145-07-CHT
- CLAMP 10495-01-000 SCREW G39-10-10U
- GROMMET 71015-26-000
- CLAMP 10495-01-000 (7) SCREW G11-08-08U (7)

- 4 PIN HSG FROM WIRE ASM-CHASSIS CIRCUITS; ACA,ACB,HHE,HHF
- CONTROL-SLIDEOUT, FRONT RIGHT 189400-01-000 SCREW G39-08-12U (4)
- 2 PIN HSG FROM WIRE ASM-CHASSIS CIRCUIT; DY
- CLAMP 10497-02-000 (3) SCREW G67-10-12U
- 6 PIN HSG WITH RED TAPE
- 6 PIN HSG WITH ORG TAPE
- 2 PIN HSG FROM WIRE ASM-CHASSIS CIRCUITS; PPA,NNZ
- 4 PIN HSG FROM WIRE ASM-CHASSIS CIRCUITS; ABY,ABZ,DR,DU
- CONTROL-SLIDEOUT, FRONT LEFT 189400-01-000 SCREW G39-08-12U (4)
- 2 PIN HSG FROM WIRE ASM-CHASSIS CIRCUIT; DY
- 6 PIN HSG WITH GRN TAPE
- 6 PIN HSG WITH YEL TAPE
- 2 PIN HSG FROM WIRE ASM-CHASSIS CIRCUITS; LLL,LLK
- 4 PIN HSG FROM WIRE ASM-CHASSIS CIRCUITS; ACC,ACD,HHG,HHH
- CONTROL-SLIDEOUT, REAR RIGHT 189400-01-000 SCREW G39-08-12U (4)
- 2 PIN HSG FROM WIRE ASM-CHASSIS CIRCUIT; DY
- 6 PIN HSG WITH BRN TAPE
- 6 PIN HSG WITH LT YEL TAPE
- 2 PIN HSG FROM WIRE ASM-CHASSIS CIRCUITS; XXW,XXV

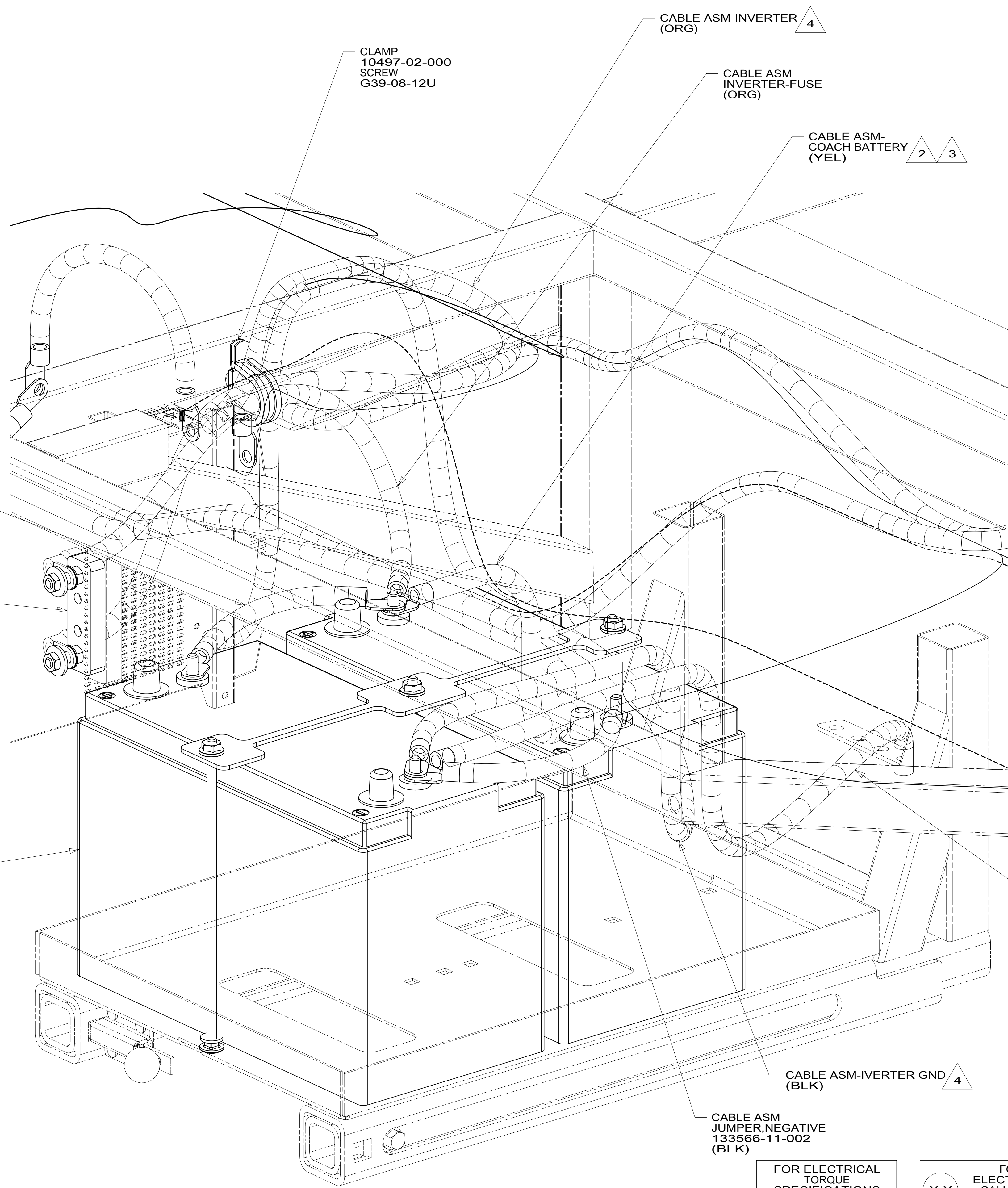
265 CODES/STANDARDS-CSA/CMVSS
 1B1 CODES/STANDARDS USA

FOR ELECTRICAL TORQUE SPECIFICATIONS SEE DWG NO. 128783-01-000

X-X FOR ELECTRICAL CALLOUTS SEE DWG NO. 121339-01-000

DESCRIPTION:	1B1 265	
WIRING INSTL-CHASSIS		
SHEET:	ITEM/PART NO:	REV
4 OF 7	000019201 / 31380901000	

CABLE ASM-STARTER (RED)		141415-34-050
CABLE ASM-COACH BATTERY (YEL)		141415-52-014
CABLE ASM-COACH BATTERY GND (BLK)		133566-12-015
CABLE ASM-GENERATOR (GRN)		141415-42-030
CABLE ASM-GENERATOR GND (BLK)		133566-12-008
LEVELING SYSTEM POWER CABLE (BLU)	60M	141415-22-020
CABLE ASM INVERTER FUSE (ORG)		141415-64-011
CABLE ASM INVERTER (ORG)		141415-64-011
CABLE ASM INVERTER GND (BLK)		133566-12-011
INVERTER GND		139776-02-011
LEVELING SYSTEM GROUND CABLE (BLK)	60M	133566-12-005



2 CABLE ASM JUMPER, POSITIVE 133566-01-002 (RED)

FUSE HOLDER 115187-02-000 SCREW G39-10-16U (2) FUSE-150 AMP 115187-03-000

BATTERY 63739-03-000 (2) TIE DOWN 160014-04-CHT BOLT 51387-06-000 (3) NUT D39-05-00U (3) WASHER-RUBBER 184541-01-CHT (3)

4 SEE WIRING INSTL-CHASSIS FOR ROUTING OF CABLE.
 3 THE POSITIVE AND NEGATIVE BATTERY CABLES ARE TO BE TERMINATED ON OPPOSITE BATTERIES.
 2 BATTERY CABLES ARE NOT TO BE ROUTED OVER BATTERY FILL CAPS.

NOTES:
 1. SEE WIRING INSTL-CHASSIS FOR ADDITIONAL INFORMATION.

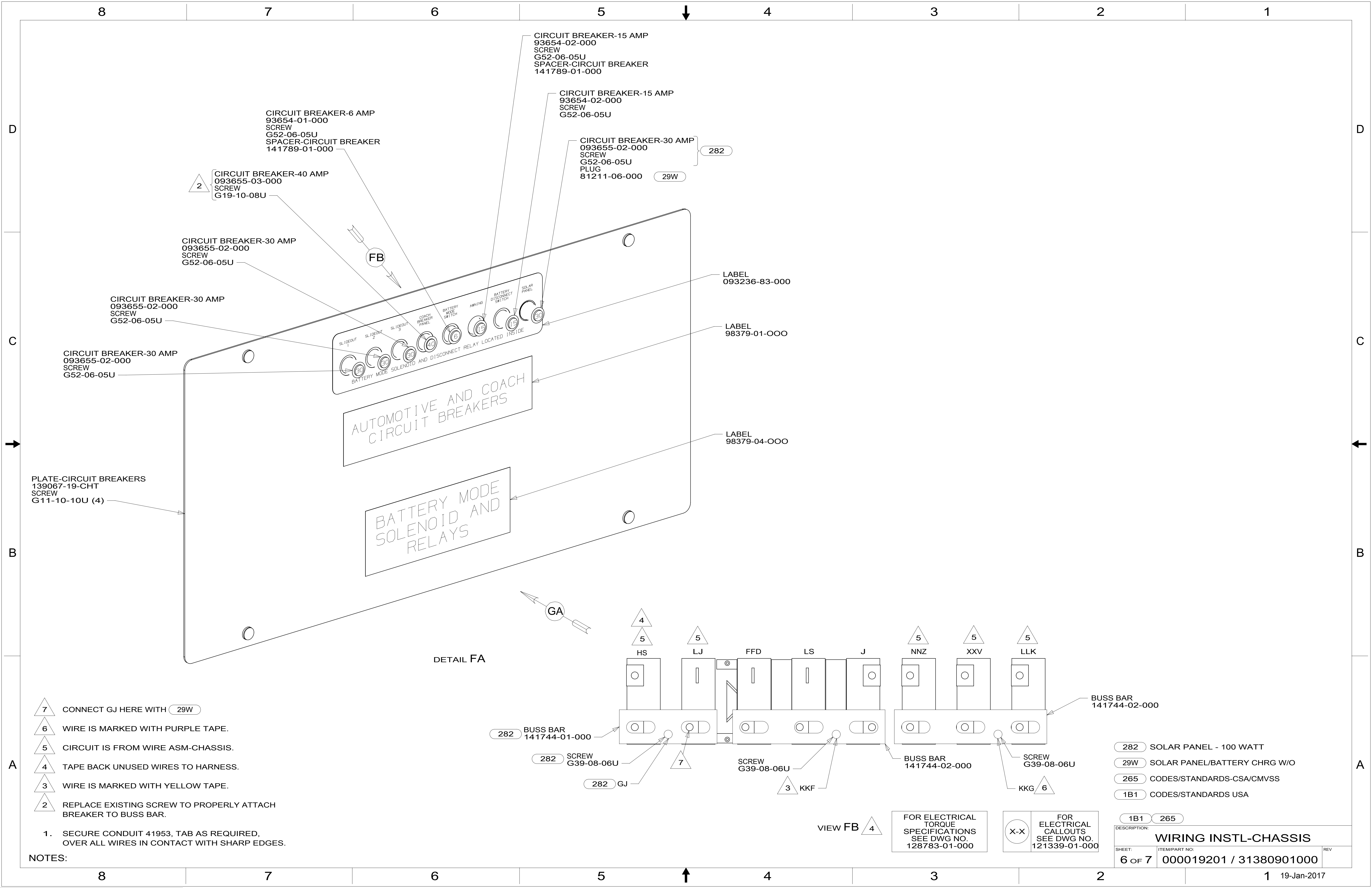
FOR ELECTRICAL TORQUE SPECIFICATIONS SEE DWG NO. 128783-01-000

FOR ELECTRICAL CALLOUTS SEE DWG NO. 121339-01-000

- 60M HYDRAULIC LEVEL JACKS-AUTO
- 265 CODES/STANDARDS-CSA/CMVSS
- 1B1 CODES/STANDARDS USA

DESCRIPTION:	1B1 265	
WIRING INSTL-CHASSIS		
SHEET:	ITEM/PART NO:	REV
5 OF 7	000019201 / 31380901000	

VIEW EA



CIRCUIT BREAKER-6 AMP
93654-01-000
SCREW
G52-06-05U
SPACER-CIRCUIT BREAKER
141789-01-000

CIRCUIT BREAKER-40 AMP
093655-03-000
SCREW
G19-10-08U

CIRCUIT BREAKER-30 AMP
093655-02-000
SCREW
G52-06-05U

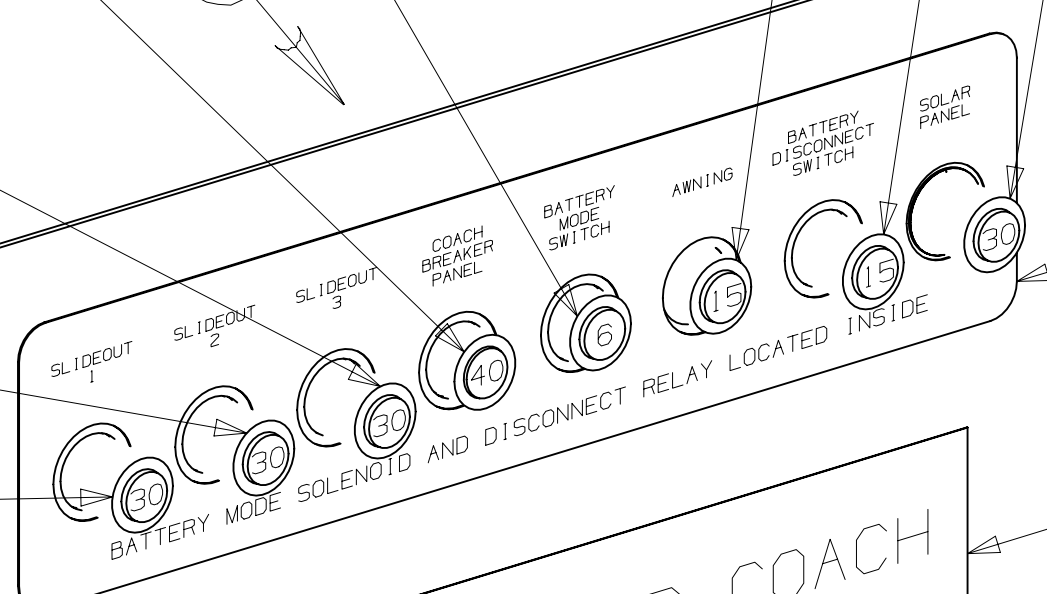
CIRCUIT BREAKER-30 AMP
093655-02-000
SCREW
G52-06-05U

CIRCUIT BREAKER-30 AMP
093655-02-000
SCREW
G52-06-05U

CIRCUIT BREAKER-15 AMP
93654-02-000
SCREW
G52-06-05U
SPACER-CIRCUIT BREAKER
141789-01-000

CIRCUIT BREAKER-15 AMP
93654-02-000
SCREW
G52-06-05U

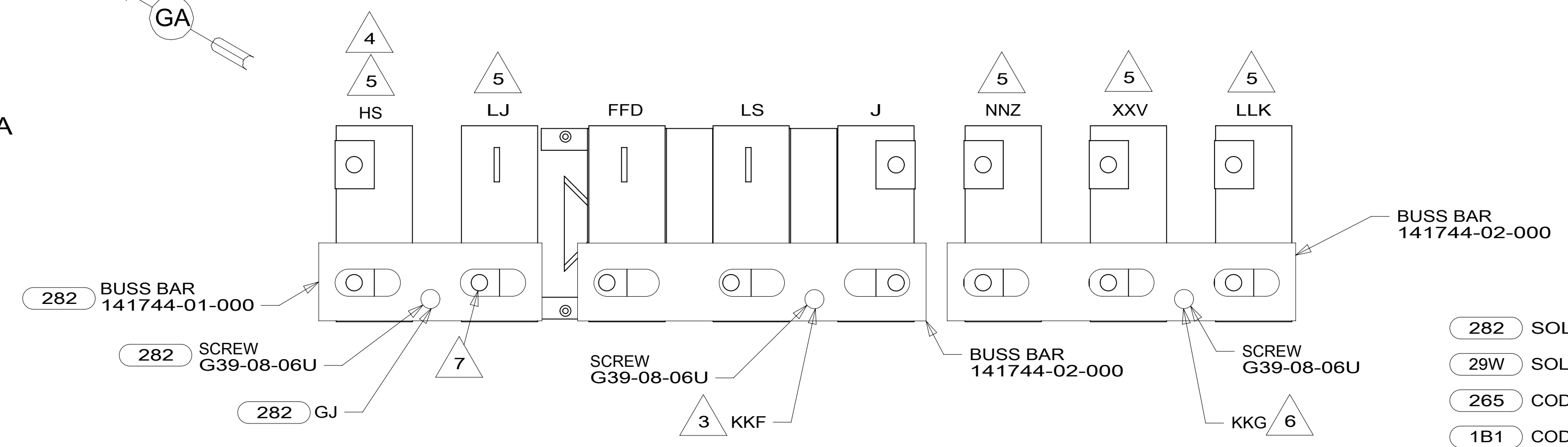
CIRCUIT BREAKER-30 AMP
093655-02-000
SCREW
G52-06-05U
PLUG
81211-06-000



AUTOMOTIVE AND COACH
CIRCUIT BREAKERS

BATTERY MODE
SOLENOID AND
RELAYS

DETAIL FA



- 7 CONNECT GJ HERE WITH 29W
- 6 WIRE IS MARKED WITH PURPLE TAPE.
- 5 CIRCUIT IS FROM WIRE ASM-CHASSIS.
- 4 TAPE BACK UNUSED WIRES TO HARNESS.
- 3 WIRE IS MARKED WITH YELLOW TAPE.
- 2 REPLACE EXISTING SCREW TO PROPERLY ATTACH BREAKER TO BUSS BAR.

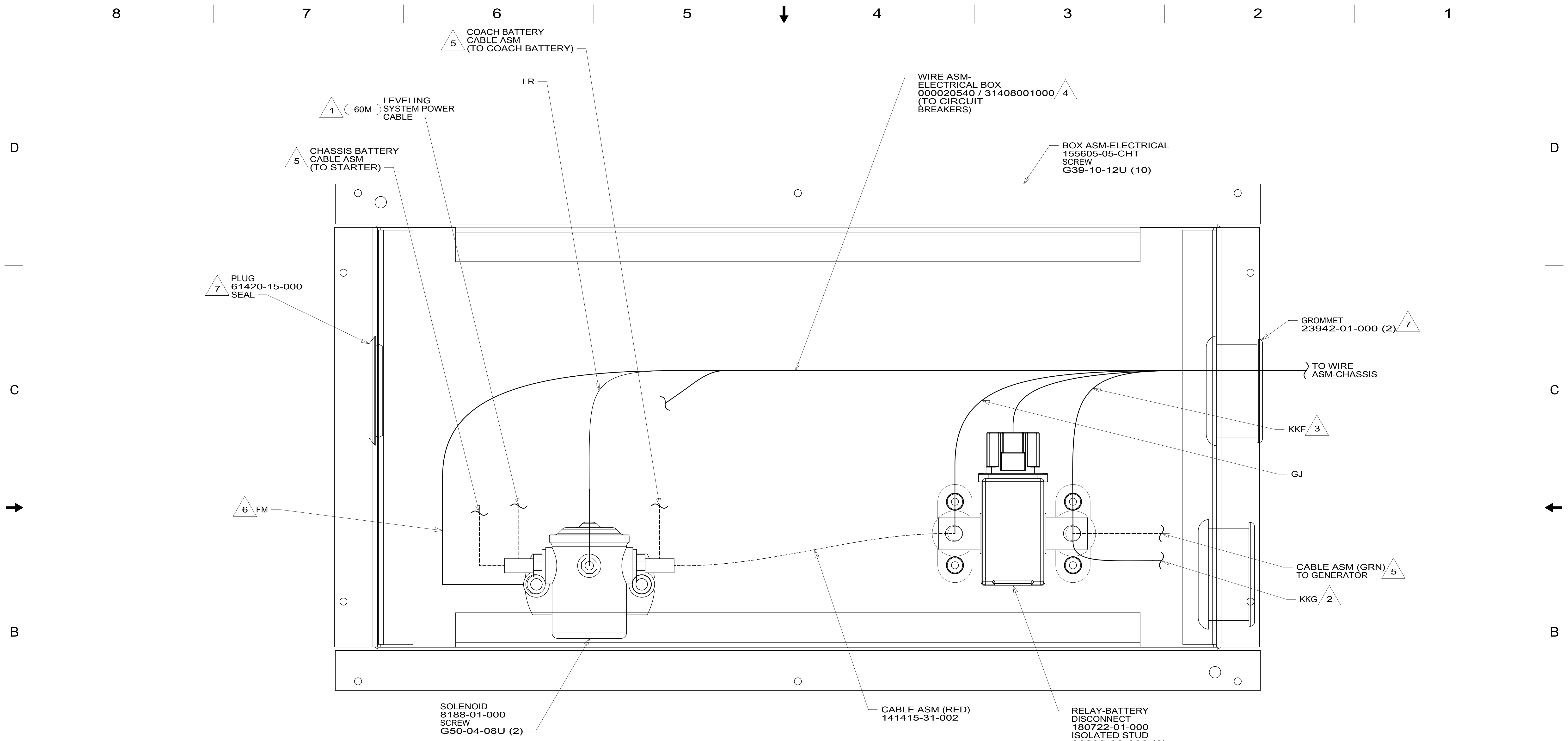
NOTES:
1. SECURE CONDUIT 41953, TAB AS REQUIRED, OVER ALL WIRES IN CONTACT WITH SHARP EDGES.

FOR ELECTRICAL TORQUE SPECIFICATIONS SEE DWG NO. 128783-01-000

FOR ELECTRICAL CALLOUTS SEE DWG NO. 121339-01-000

- 282 SOLAR PANEL - 100 WATT
- 29W SOLAR PANEL/BATTERY CHRGR W/O
- 265 CODES/STANDARDS-CSA/CMVSS
- 1B1 CODES/STANDARDS USA

DESCRIPTION:		1B1 265	
WIRING INSTL-CHASSIS			
SHEET:	ITEM/PART NO.:	REV	
6 OF 7	000019201 / 31380901000		



VIEW GA

- 7 LOCATION OF GROMMET & PLUG DEPENDENT ON LOCATION OF BOX.
- 6 SECURE WITH SOLENOID MOUNTING SCREW.
- 5 SEE WIRING INSTL-CHASSIS FOR ADDITIONAL INFORMATION.
- 4 TAPE BACK UNUSED WIRES TO HARNESS.
- 3 WIRE IS MARKED WITH YELLOW TAPE.
- 2 WIRE IS MARKED WITH PURPLE TAPE.
- 1 SEE LEVELING SYSTEM INSTL FOR ADDITIONAL INFORMATION.

NOTES:

- 60M HYDRAULIC LEVEL JACKS-AUTO
- 265 CODES/STANDARDS-CSA/CMVSS
- 1B1 CODES/STANDARDS USA

FOR ELECTRICAL TORQUE SPECIFICATIONS SEE DWG NO. 128783-01-000

FOR ELECTRICAL CALLOUTS SEE DWG NO. 121339-01-000

DESCRIPTION:		WIRING INSTL-CHASSIS	
SHEET:	ITEM/PART NO.:	REV	
7 OF 7	000019201 / 31380901000		