

CLAMP
010497-03-000 (4)

1 ANTENNA
POWER BOOST
(REF)

2 110V RCP
(REF)

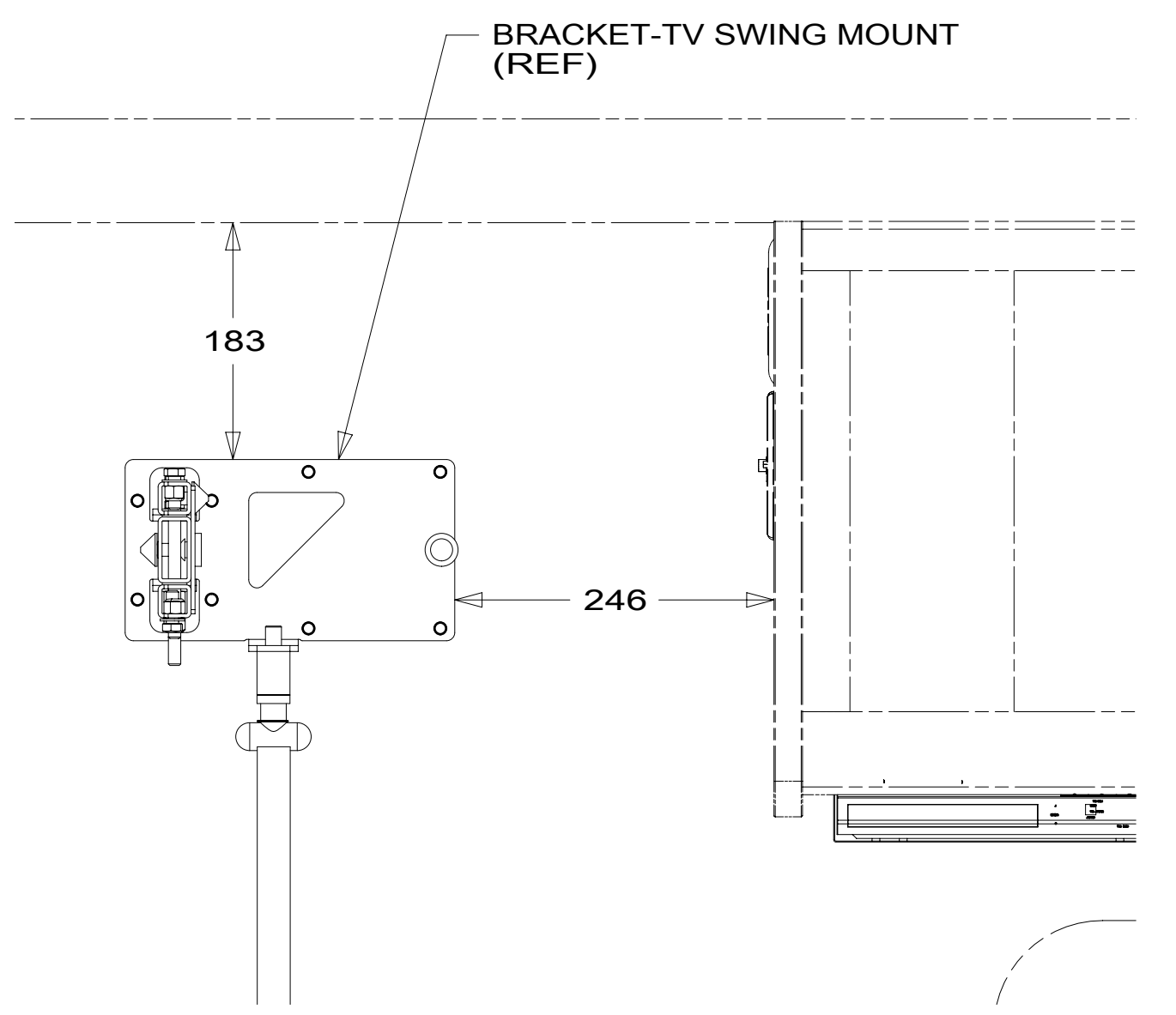
BRACKET-TV SWING MOUNT
179241-03-CHT
SCREW
000G39-10-12U (8)
PLATE-MNTNG,TV,32" INSIGNIA
000035142 / 317956-01-CHT
INVERTER ASM-155W W/ SOCKET
000034454 / 317778-01-XXX
RIVET
113133-01-CHT (4)

CONDUIT-CONVOLUTE
041953-03-000 (1100 MM)

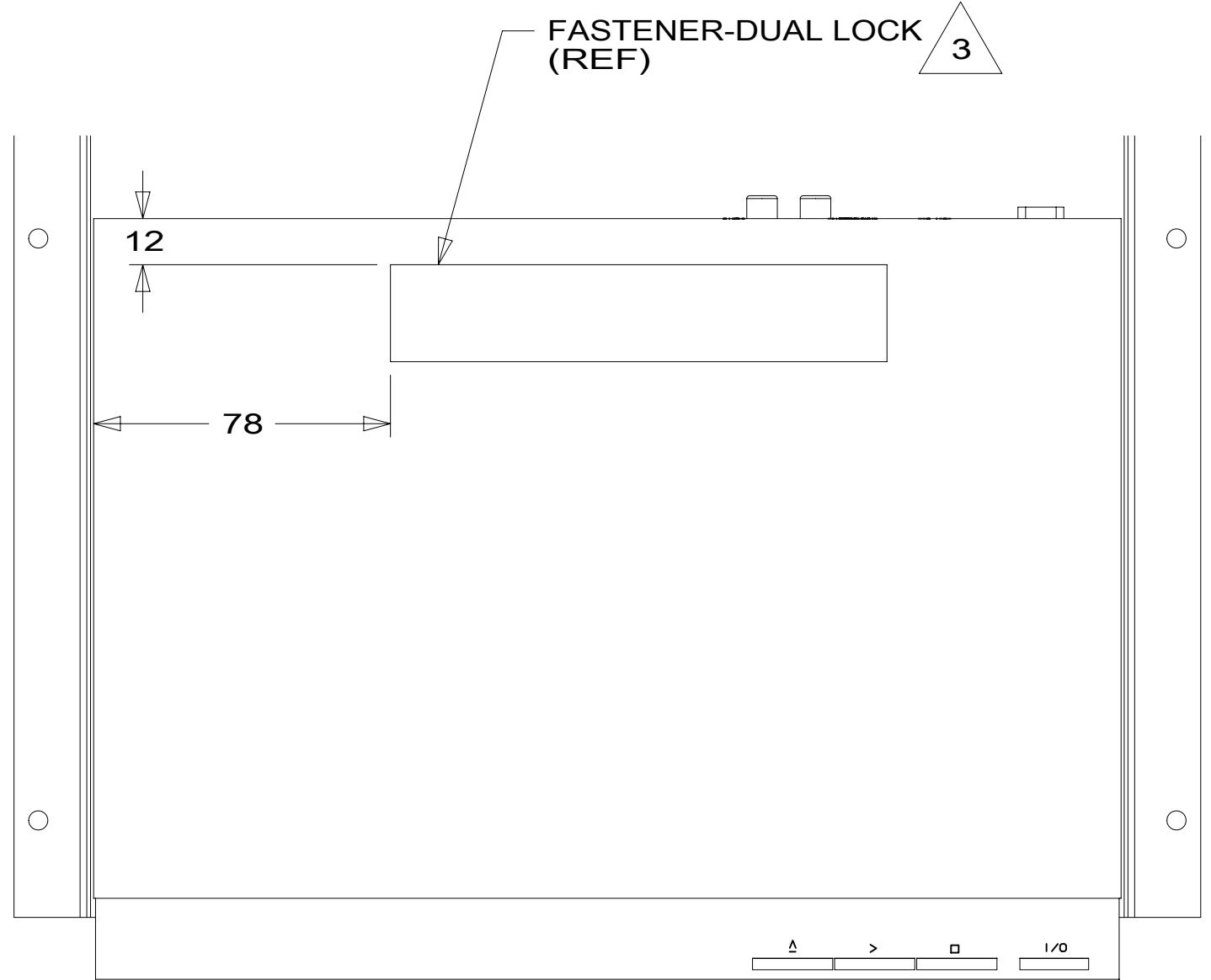
TIE-WIRE
008343-04-000 (2)

TV-32" HDTV
000031285 / 316939-01-000
SCREW
OMG02U-04-012 (4)
WASHER
OME02U-04-071 (4)
TAPE-FOAM,DBL
076322-22-000 (50 MM)
076322-22-000 (80 MM)
TAPE-FOAM,DBL
076322-23-000 (150 MM)

DVD PLAYER W/ HDMI OUT
186774-01-000
BRACKET-DVD PLAYER
184814-03-CHT
SCREW
000G67-10-12U (6)
FASTENER-DUAL LOCK
085774-01-000 (130 MM)
085774-02-000 (130 MM)



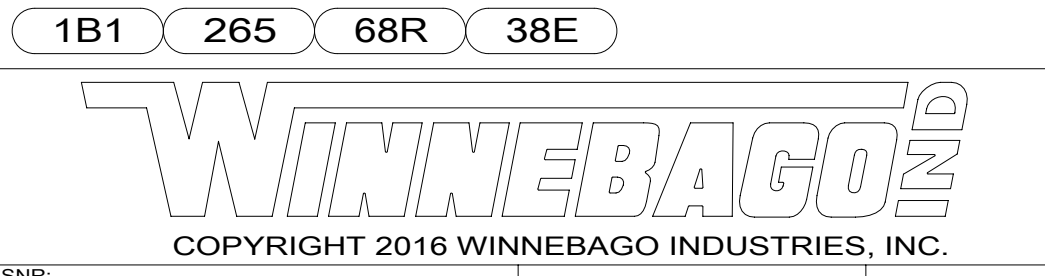
VIEW AB
(TV NOT SHOWN)



VIEW AA

- NOTES:
- 4 PREP BOTH SURFACES WITH ADHESIVE-PROMOTER 087211-01-000.
 - 3 ATTACH FASTENER-DUAL LOCK TO DVD PLAYER POSITIONED AS SHOWN.
 - 2 SEE WIRING INSTL-BODY, 110V FOR ADDITIONAL INFORMATION.
 - 1 SEE WIRING INSTL-BODY, 12V FOR ADDITIONAL INFORMATION.

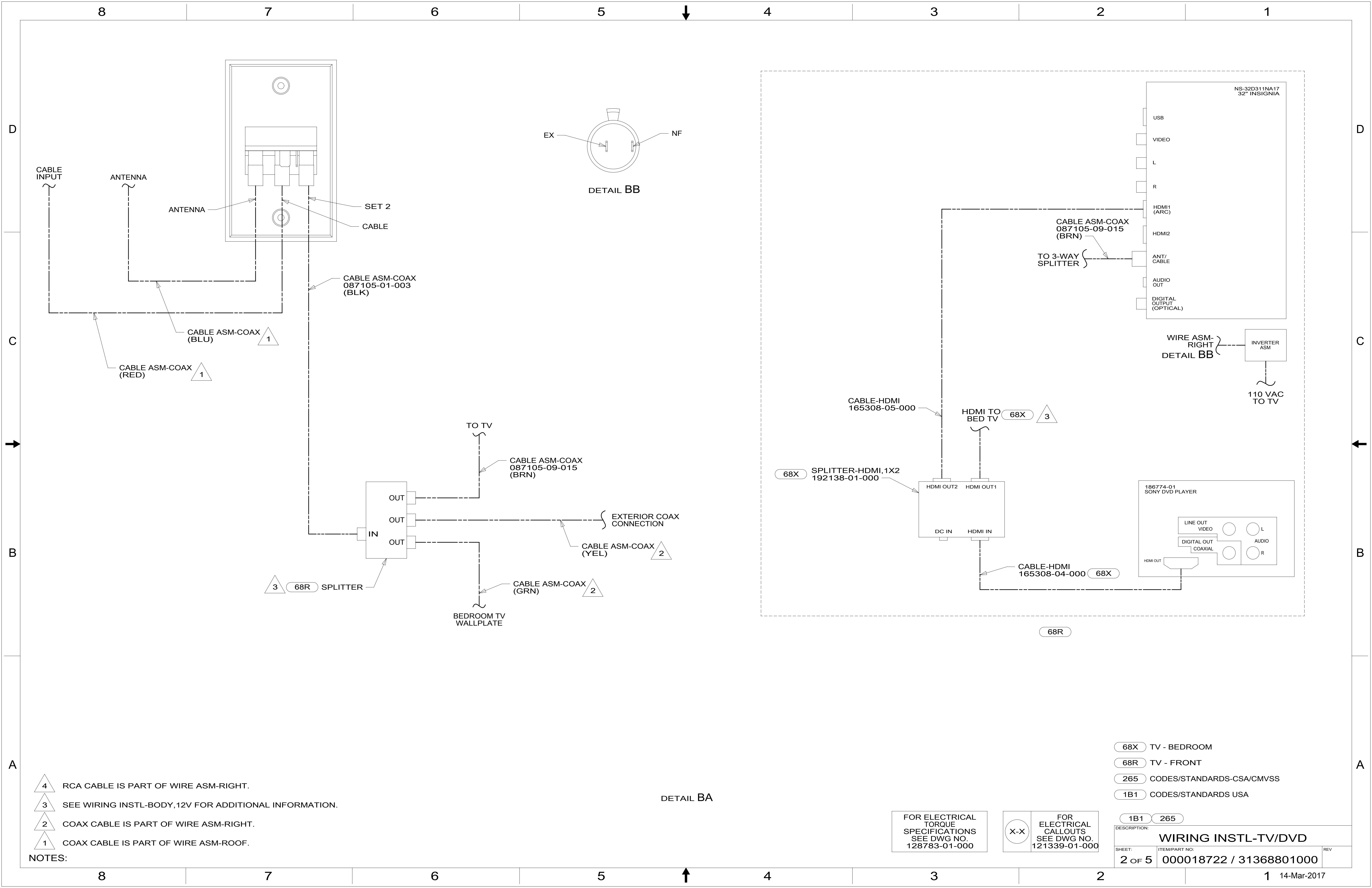
- 38E CONVENIENCE PACKAGE
- 68R TV - FRONT
- 265 CODES/STANDARDS-CSA/CMVSS
- 1B1 CODES/STANDARDS USA



DSNR:		ALL DIMENSIONS ARE IN MILLIMETERS	
DFFR:		MATERIAL:	
UNSPECIFIED TOLERANCES:		WEIGHT: (LBS)	FIRST USED:
WHOLE DIM (X)	: 3		17 325B
ONE-PLACE (X.X)	: 1.5		
TWO-PLACE (X.XX)	: 0.50		
ANGLE	: 1°		
REFER TO ES0018 FOR FASTENER TIGHTENING GUIDELINES			
DESCRIPTION: WIRING INSTL-TV/DVD			
SHEET:	ITEM/PART NO.:	REV:	
1 OF 5	000018722 / 31368801000		

FOR ELECTRICAL TORQUE SPECIFICATIONS SEE DWG NO. 128783-01-000

FOR ELECTRICAL CALLOUTS SEE DWG NO. 121339-01-000



- NOTES:
- 4 RCA CABLE IS PART OF WIRE ASM-RIGHT.
 - 3 SEE WIRING INSTL-BODY, 12V FOR ADDITIONAL INFORMATION.
 - 2 COAX CABLE IS PART OF WIRE ASM-RIGHT.
 - 1 COAX CABLE IS PART OF WIRE ASM-ROOF.

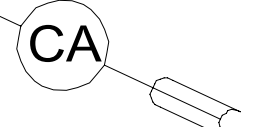
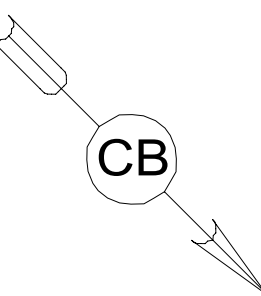
DETAIL BA

FOR ELECTRICAL TORQUE SPECIFICATIONS SEE DWG NO. 128783-01-000

FOR ELECTRICAL CALLOUTS SEE DWG NO. 121339-01-000

- 68X TV - BEDROOM
- 68R TV - FRONT
- 265 CODES/STANDARDS-CSA/CMVSS
- 1B1 CODES/STANDARDS USA

DESCRIPTION: WIRING INSTL-TV/DVD		
SHEET: 2 OF 5	ITEM/PART NO: 000018722 / 31368801000	REV

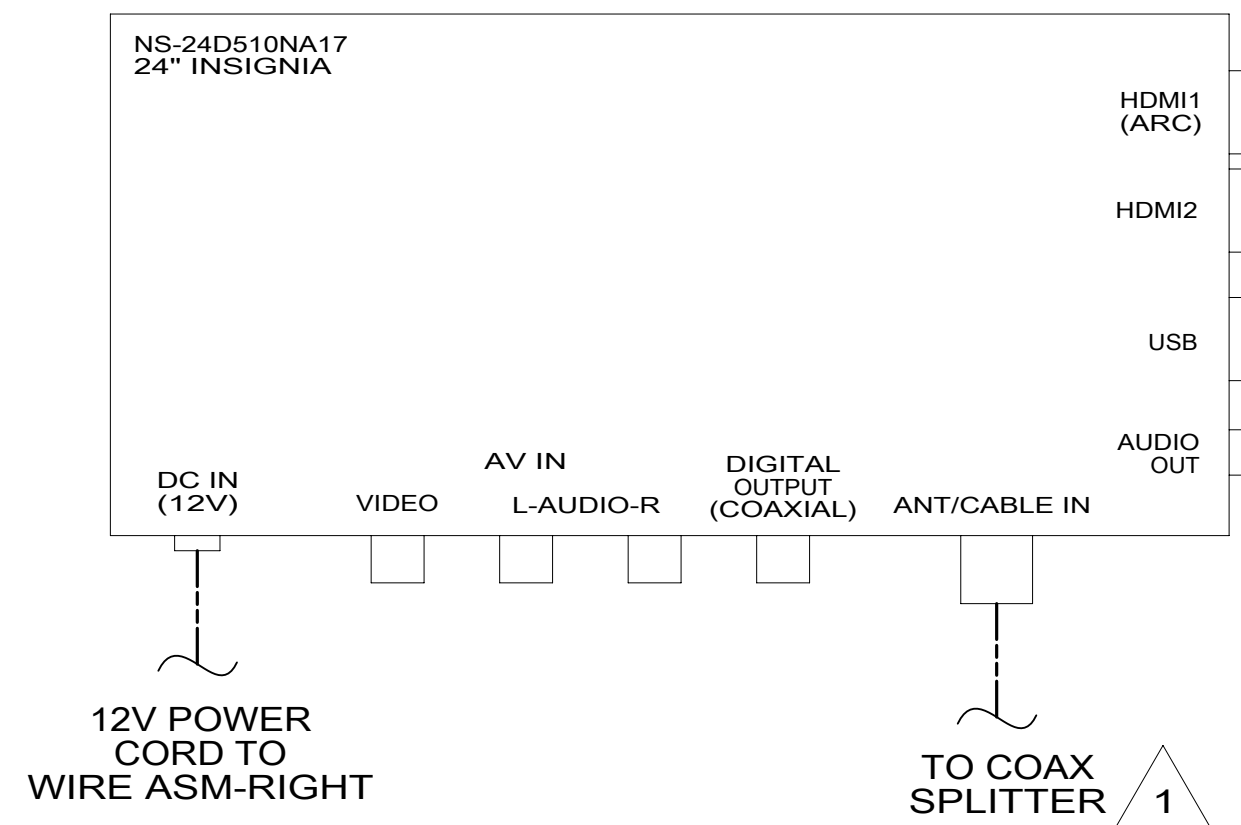


TV-24" HDTV, 12 VDC
 000031269 / 316937-01-000
 CORD-POWER,12VDC
 191991-01-000

110V RCP (REF) 2

BRACKET-TV
 000033447 / 317570-01-CHT
 SCREW
 000G39-10-12U (6)
 PLATE-MOUNTING
 000032972 / 317364-01-CHT
 TAPE-FOAM, DBL COATED, 0.45X1.0
 076322-23-000 (120 MM)
 SCREW
 000G39-10-12U (2)
 000G11-08-20U (2)

VIEW CA
 (TV NOT SHOWN)



VIEW CB

- 68X TV - BEDROOM
- 265 CODES/STANDARDS-CSA/CMVSS
- 1B1 CODES/STANDARDS USA

2 SEE WIRING INSTL-BODY, 110V FOR ADDITIONAL INFORMATION.
 1 SEE WIRING INSTL-BODY, 12V FOR ADDITIONAL INFORMATION.

FOR ELECTRICAL TORQUE SPECIFICATIONS SEE DWG NO. 128783-01-000

FOR ELECTRICAL CALLOUTS SEE DWG NO. 121339-01-000

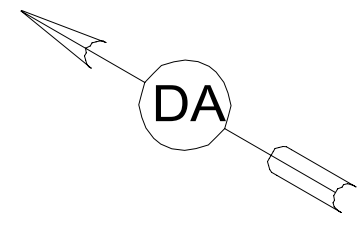
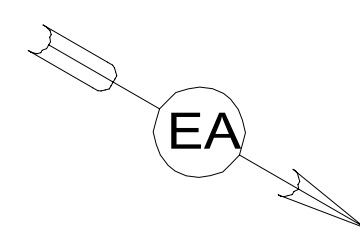
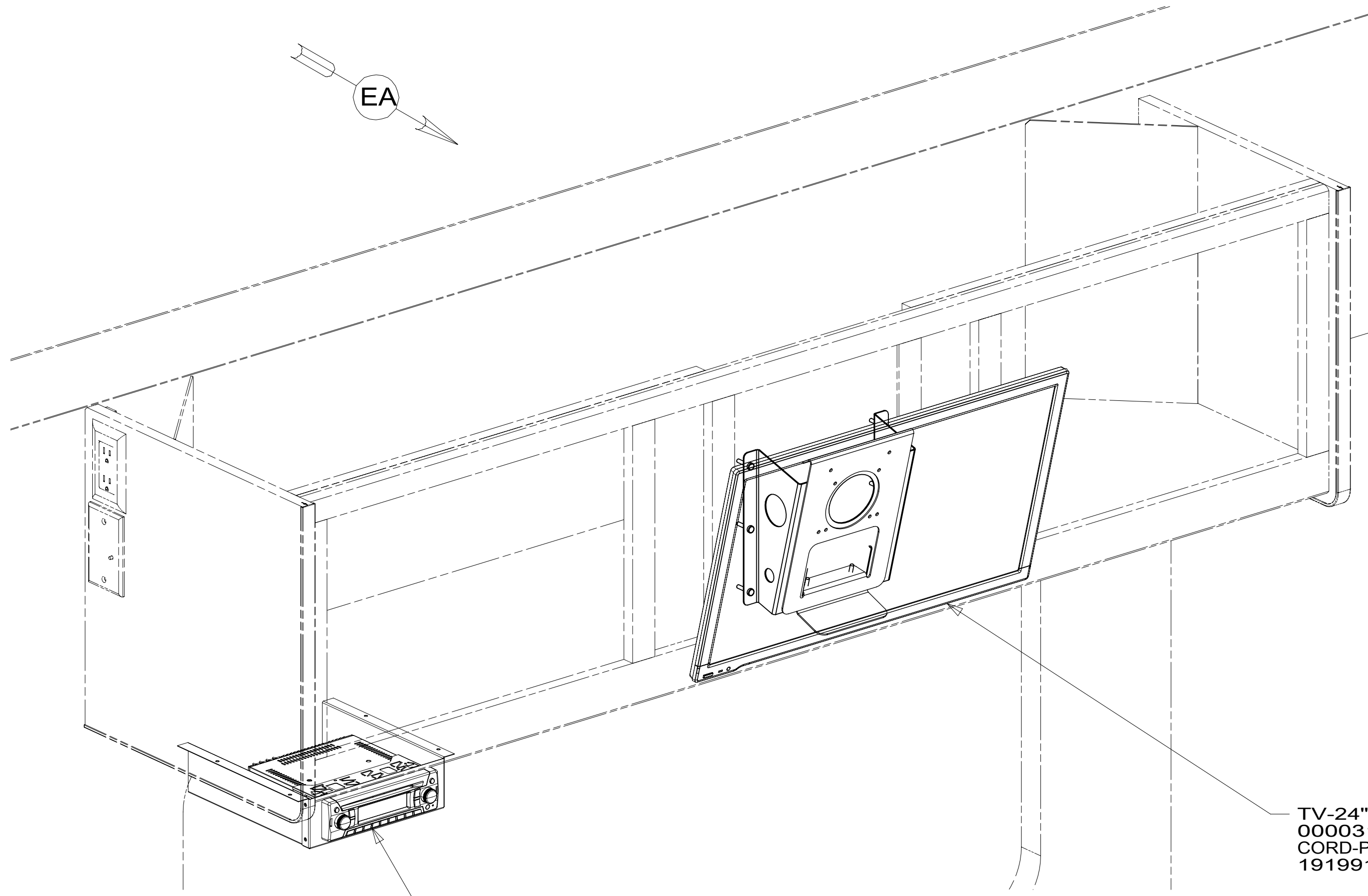
DESCRIPTION:	1B1 265 68X	
WIRING INSTL-TV/DVD		
SHEET:	ITEM/PART NO:	REV
3 OF 5	000018722 / 31368801000	

8 7 6 5 4 3 2 1



D
C
B
A

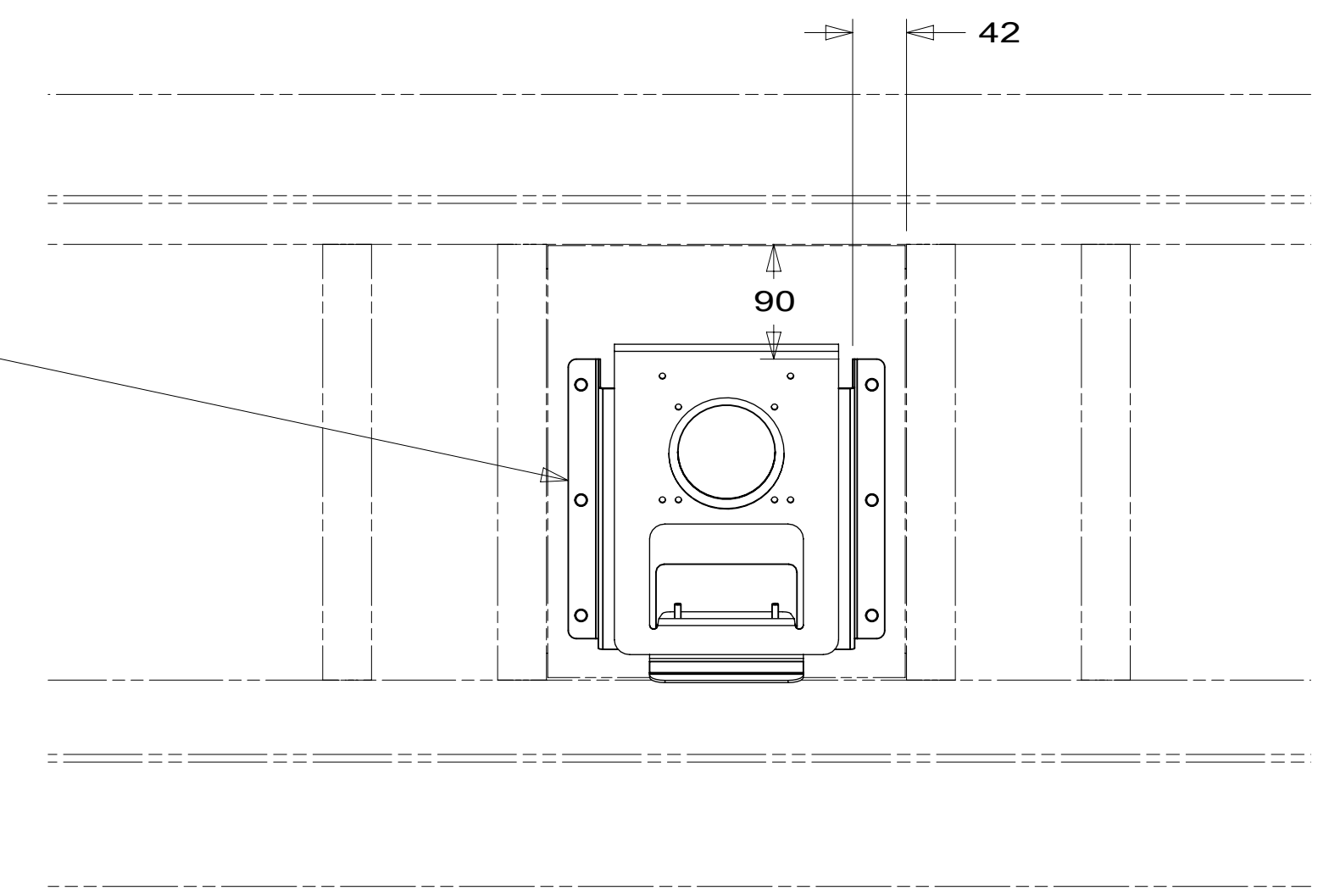
D
C
B
A



RADIO-AM/FM/CD/DVD/RMT
302630-01-000
BRACKET-DVD PLAYER
184814-02-CHT
BRACKET-DVD PLAYER
187490-01-CHT
SUPPORT-RADIO,REAR
181725-02-CHT
SCREW
000G67-10-12U (6)
SCREW
000G39-08-08U (4)

TV-24" HDTV, 12 VDC
000031269 / 316937-01-000
CORD-POWER,12VDC
191991-01-000

BRACKET-TV
000033447 / 317570-01-CHT
SCREW
000G39-10-16U (6)
PLATE-MOUNTING
000032972 / 317364-01-CHT
TAPE-FOAM,DBL COATED,045X1.0
076322-23-000 (120 MM)
SCREW
OMG02U-06-016 (4)
000G39-10-12U (2)
000G11-08-20U (2)



VIEW DA
(TV NOT SHOWN)

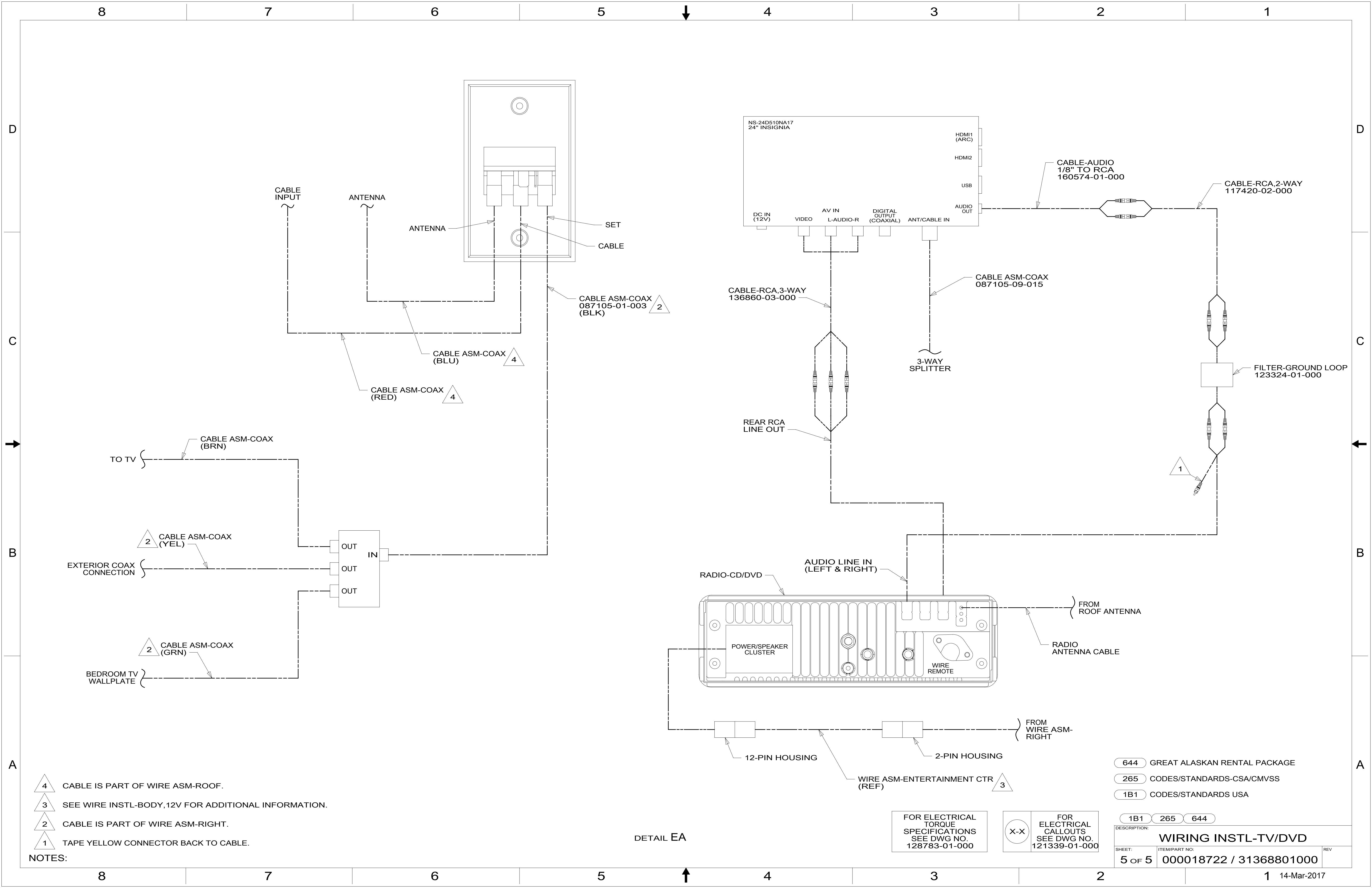
- 644 GREAT ALASKAN RENTAL PACKAGE
- 265 CODES/STANDARDS-CSA/CMVSS
- 1B1 CODES/STANDARDS USA

FOR ELECTRICAL TORQUE SPECIFICATIONS SEE DWG NO. 128783-01-000

FOR ELECTRICAL CALLOUTS SEE DWG NO. 121339-01-000

DESCRIPTION:	1B1 265 644	
WIRING INSTL-TV/DVD		
SHEET:	ITEM/PART NO:	REV
4 OF 5	000018722 / 31368801000	

8 7 6 5 4 3 2 1 14-Mar-2017



- NOTES:
- 4 CABLE IS PART OF WIRE ASM-ROOF.
 - 3 SEE WIRE INSTL-BODY, 12V FOR ADDITIONAL INFORMATION.
 - 2 CABLE IS PART OF WIRE ASM-RIGHT.
 - 1 TAPE YELLOW CONNECTOR BACK TO CABLE.

DETAIL EA

FOR ELECTRICAL TORQUE SPECIFICATIONS SEE DWG NO. 128783-01-000

FOR ELECTRICAL CALLOUTS SEE DWG NO. 121339-01-000

- 644 GREAT ALASKAN RENTAL PACKAGE
- 265 CODES/STANDARDS-CSA/CMVSS
- 1B1 CODES/STANDARDS USA

DESCRIPTION:	1B1 265 644	
WIRING INSTL-TV/DVD		
SHEET:	ITEM/PART NO.:	REV
5 OF 5	000018722 / 31368801000	