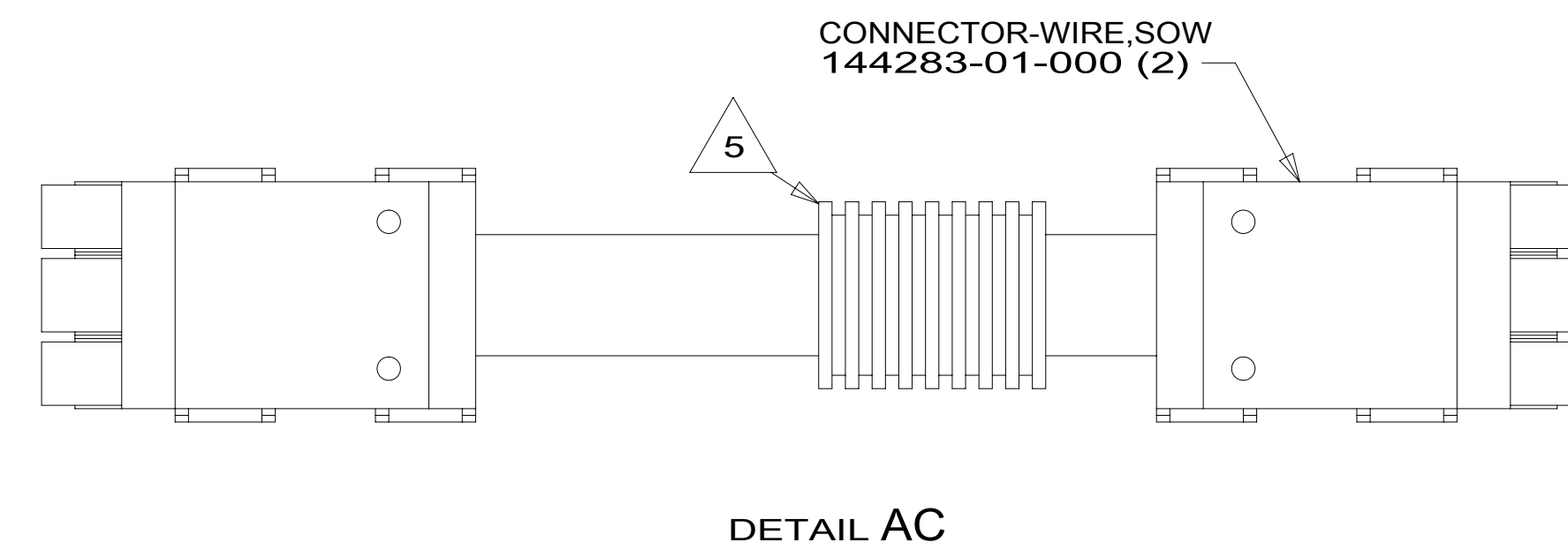
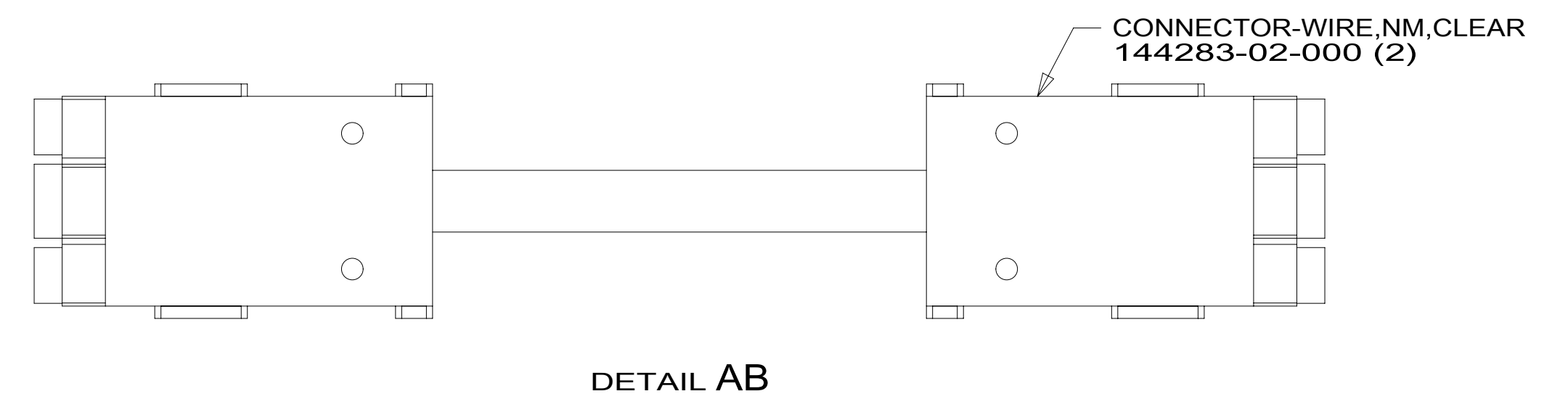
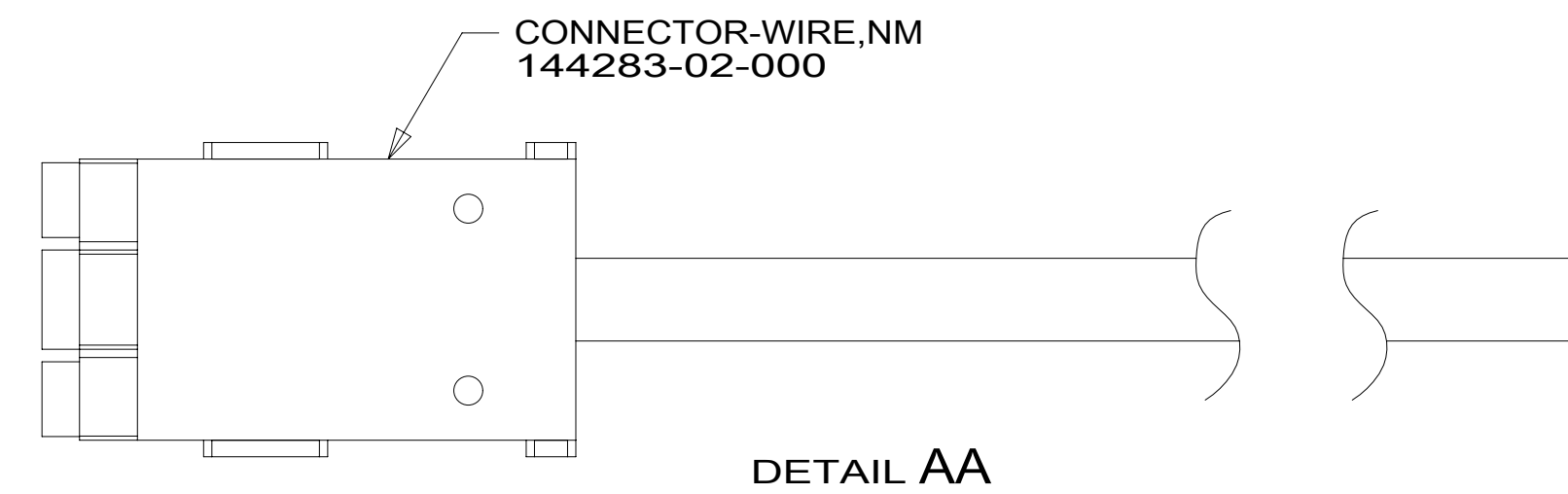


RED	1B1	136135-07-062
	265	136136-07-062
YEL	1B1	136131-05-037
	265	136134-05-037
YEL-2	1B1	136131-13-051
	265	136134-13-051
BRN	1B1	136131-03-122
	265	136134-03-122
BLU	1B1	136131-02-150
	265	136134-02-150
MAIN	1B1	000035684_08400 / 318060-00-084
	265	000035684_08400 / 318060-00-084
GRN	1B1	136135-08-062
	265	136136-08-062
PUR	1B1	136131-04-047
	265	136134-04-047
BLK	1B1	136131-06-062
	265	136134-06-062
WHT	1B1	136135-09-027
	265	136136-09-027

THROW IN WIRE #1	1B1	136131-12-075
	265	136134-12-075
THROW IN WIRE #2	1B1	136131-12-150
	265	136134-12-150
THROW IN WIRE #3	1B1	136131-04-006 401
	265	136134-04-006 401
THROW IN WIRE #4	1B1	136131-12-006 401
	265	136134-12-006 401
THROW IN WIRE #5	1B1	136131-12-039
	265	136134-12-039
THROW IN WIRE #6	1B1	136131-12-024 68R
	265	136134-12-024 68R
THROW IN WIRE #7	1B1	136131-03-009
	265	136134-03-009
SLIDEOUT WIRE #1		136151-12-034
SLIDEOUT WIRE #2		136151-12-034
GENERATOR CABLE ASM		174762-02-039
		174762-02-039
GROUND ATS		136145-01-062
GROUND MAIN		136145-01-050



- SEE DETAIL AC FOR CONNECTOR INSTALLATION.
- APPLY 300MM OF CONDUIT-CONVOLUTE 41953-05-000 OVER WIRE AT DIMENSION SHOWN AND SECURE BOTH ENDS OF TUBING TO WIRE WITH TAPE 8363-01-000.
- SEE DETAIL AB FOR CONNECTOR INSTALLATION.
- SEE DETAIL BA FOR CONNECTOR INSTALLATION.
- SEE DETAIL AA FOR CONNECTOR INSTALLATION.
1. ALL GROUND WIRES TO BE COVERED WITH TUBING 8041-02-000.

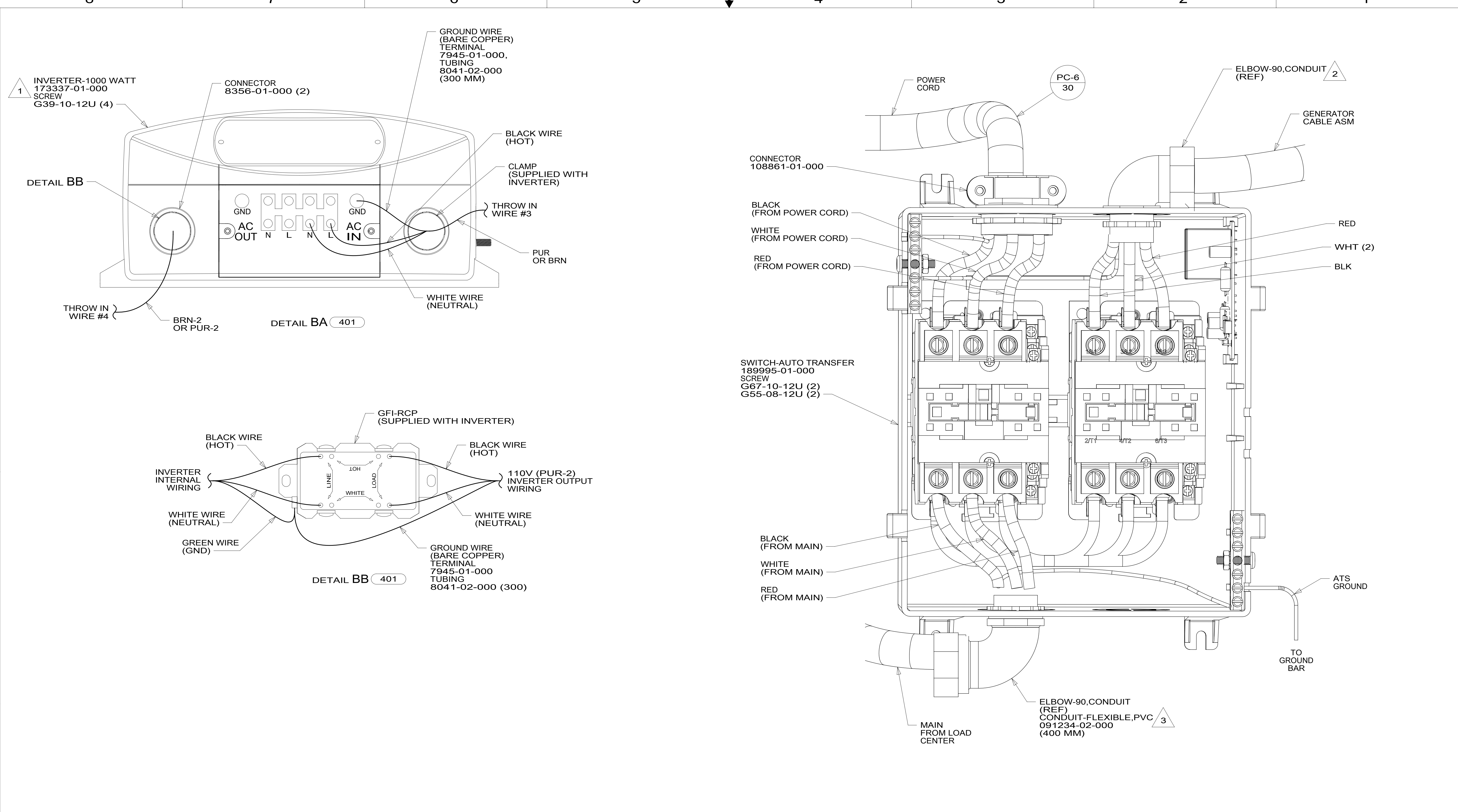
FOR ELECTRICAL TORQUE SPECIFICATIONS SEE DWG NO. 128783-01-000

FOR ELECTRICAL CALLOUTS SEE DWG NO. 121339-01-000

- TV - FRONT
- INVERTER-DC/AC, 1000 WATT
- CODES/STANDARDS-CSA/CMVSS
- CODES/STANDARDS USA

WINNEBAGO
COPYRIGHT 2016 WINNEBAGO INDUSTRIES, INC.

DSNR:	ALL DIMENSIONS ARE IN MILLIMETERS	
DFFR:	MATERIAL:	
UNSPECIFIED TOLERANCES:	WHOLE DIM (X) :	3
ONE-PLACE (X.X) :	TWO-PLACE (X.XX) :	0.50
ANGLE :		1°
REFER TO ES0018 FOR FASTENER TIGHTENING GUIDELINES	WEIGHT: (LBS)	FIRST USED:
		17 E35B
DESCRIPTION: LOAD CENTER/ATS ASM		
SHEET: 1 OF 3	ITEM/PART NO: 000017276 / 31335501000	REV:



NOTES:

- 3 ELBOW-90, CONDUIT IS PART OF MAIN CABLE ASM.
- 2 ELBOW-90, CONDUIT IS PART OF GENERATOR CABLE ASM.
- 1 INVERTER SUPPLIED WITH REMOTE PANEL SEND TO MANUFACTURING LINE.

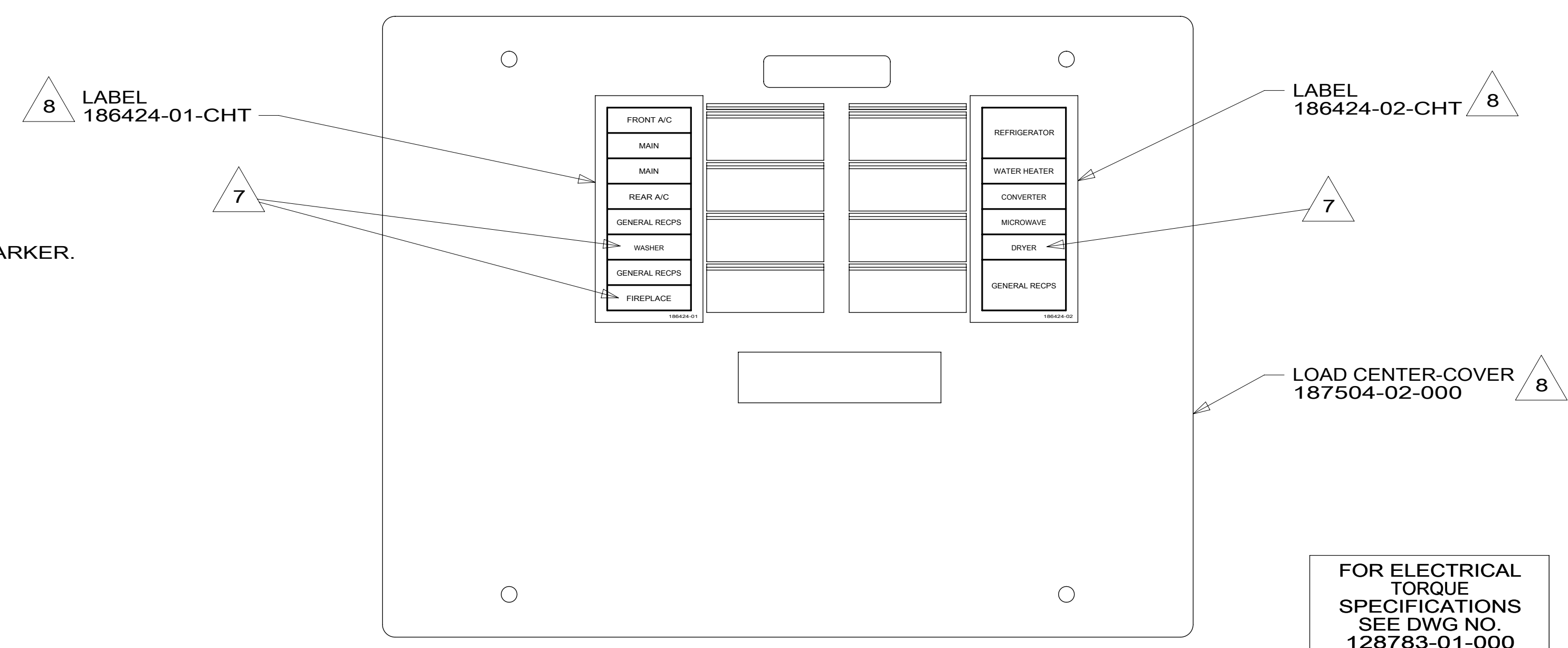
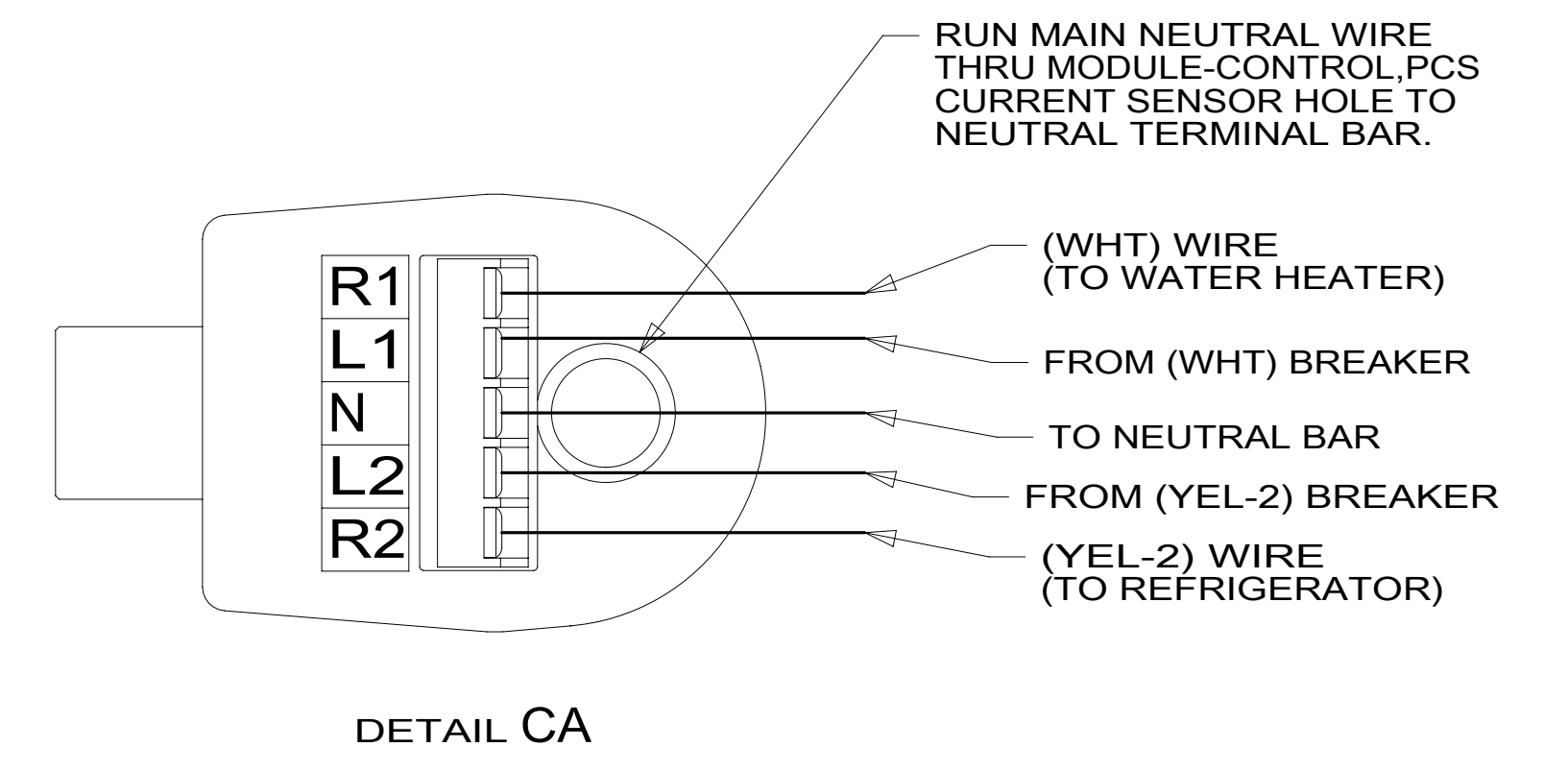
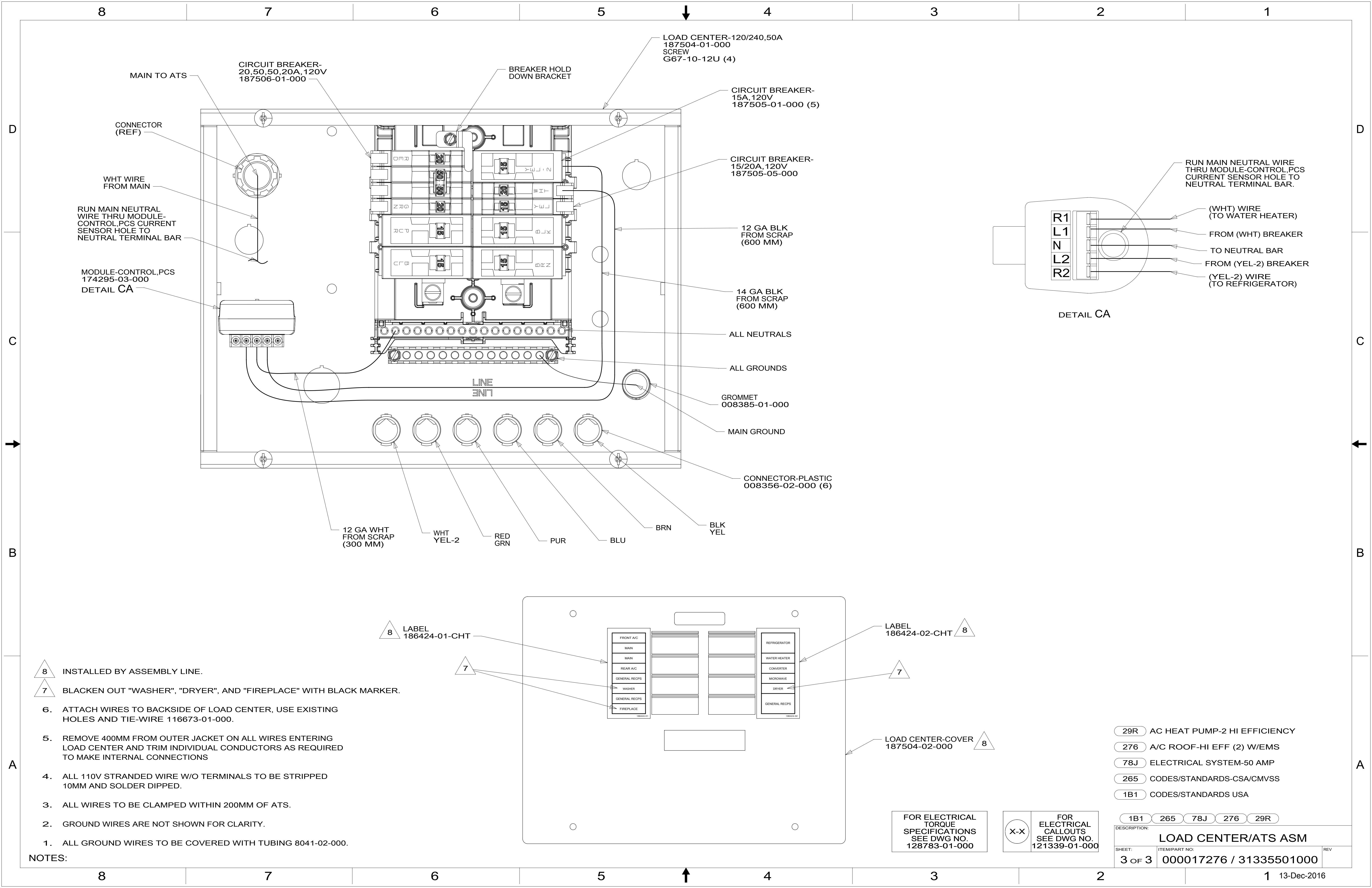
DESCRIPTION:

401 INVERTER-DC/AC, 1000 WATT
 265 CODES/STANDARDS-CSA/CMVSS
 1B1 CODES/STANDARDS USA

FOR ELECTRICAL TORQUE SPECIFICATIONS SEE DWG NO. 128783-01-000

FOR ELECTRICAL CALLOUTS SEE DWG NO. 121339-01-000

SHEET: 2 OF 3
 ITEM/PART NO.: 000017276 / 31335501000
 REV: 13-Dec-2016



- NOTES:
- ALL GROUND WIRES TO BE COVERED WITH TUBING 8041-02-000.
 - GROUND WIRES ARE NOT SHOWN FOR CLARITY.
 - ALL WIRES TO BE CLAMPED WITHIN 200MM OF ATS.
 - ALL 110V STRANDED WIRE W/O TERMINALS TO BE STRIPPED 10MM AND SOLDER DIPPED.
 - REMOVE 400MM FROM OUTER JACKET ON ALL WIRES ENTERING LOAD CENTER AND TRIM INDIVIDUAL CONDUCTORS AS REQUIRED TO MAKE INTERNAL CONNECTIONS
 - ATTACH WIRES TO BACKSIDE OF LOAD CENTER, USE EXISTING HOLES AND TIE-WIRE 116673-01-000.
 - BLACKEN OUT "WASHER", "DRYER", AND "FIREPLACE" WITH BLACK MARKER.
 - INSTALLED BY ASSEMBLY LINE.

FOR ELECTRICAL TORQUE SPECIFICATIONS SEE DWG NO. 128783-01-000

FOR ELECTRICAL CALLOUTS SEE DWG NO. 121339-01-000

- 29R AC HEAT PUMP-2 HI EFFICIENCY
- 276 A/C ROOF-HI EFF (2) W/EMS
- 78J ELECTRICAL SYSTEM-50 AMP
- 265 CODES/STANDARDS-CSA/CMVSS
- 1B1 CODES/STANDARDS USA

DESCRIPTION:	LOAD CENTER/ATS ASM	
SHEET:	ITEM/PART NO:	REV
3 OF 3	000017276 / 31335501000	