

8

7

6

5

4

3

2

1



D

D

CABLE ASM-CHASSIS GND EXT (BLK)	133566-12-011
CABLE ASM-CHASSIS BATTERY DISCONNECT SUPPLY (RED)	141415-32-024
CABLE ASM-COACH BATTERY DISCONNECT SUPPLY (YEL)	141416-52-024
CABLE ASM-COACH BATTERY GND (BLK)	133567-12-008
CABLE ASM-CHASSIS BATTERY DISCONNECT RETURN (PUR)	141415-12-028
CABLE ASM-GENERATOR (GRN)	141415-42-106
LEVELING SYSTEM POWER CABLE (BLU)	141415-29-011
LEVELING SYSTEM GND CABLE (BLK)	133566-12-008
WIRE ASM-INVERTER	154845-02-031
CABLE ASM-STARTER (RED)	141416-32-010
CABLE ASM-COACH BATTERY FUSE	141416-52-003
CABLE ASM-CHASSIS BATTERY FUSE	141415-32-003

401

C

C



B

B

A

A

- 401 INVERTER-DC/AC, 1000 WATT
- 265 CODES/STANDARDS-CSA/CMVSS
- 1B1 CODES/STANDARDS USA

- 1B1 265

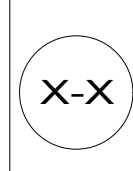


COPYRIGHT 2016 WINNEBAGO INDUSTRIES, INC.

DSNR:		ALL DIMENSIONS ARE IN MILLIMETERS		
DFFR:		MATERIAL:		
UNSPECIFIED TOLERANCES:				
WHOLE DIM (X)	: 3			
ONE-PLACE (X.X)	: 1.5			
TWO-PLACE (X.XX)	: 0.50			
ANGLE	: 1°			
REFER TO ES0018 FOR FASTENER TIGHTENING GUIDELINES		WEIGHT: (LBS)	FIRST USED:	
			17 E35B	
DESCRIPTION:				
BATTERY INSTL				
SHEET:	ITEM/PART NO.:	REF:		REV
1 OF 4	000017217 / 31334601000			

FOR ELECTRICAL TORQUE SPECIFICATIONS SEE DWG NO. 128783-01-000

FOR ELECTRICAL CALLOUTS SEE DWG NO. 121339-01-000



8

7

6

5

4

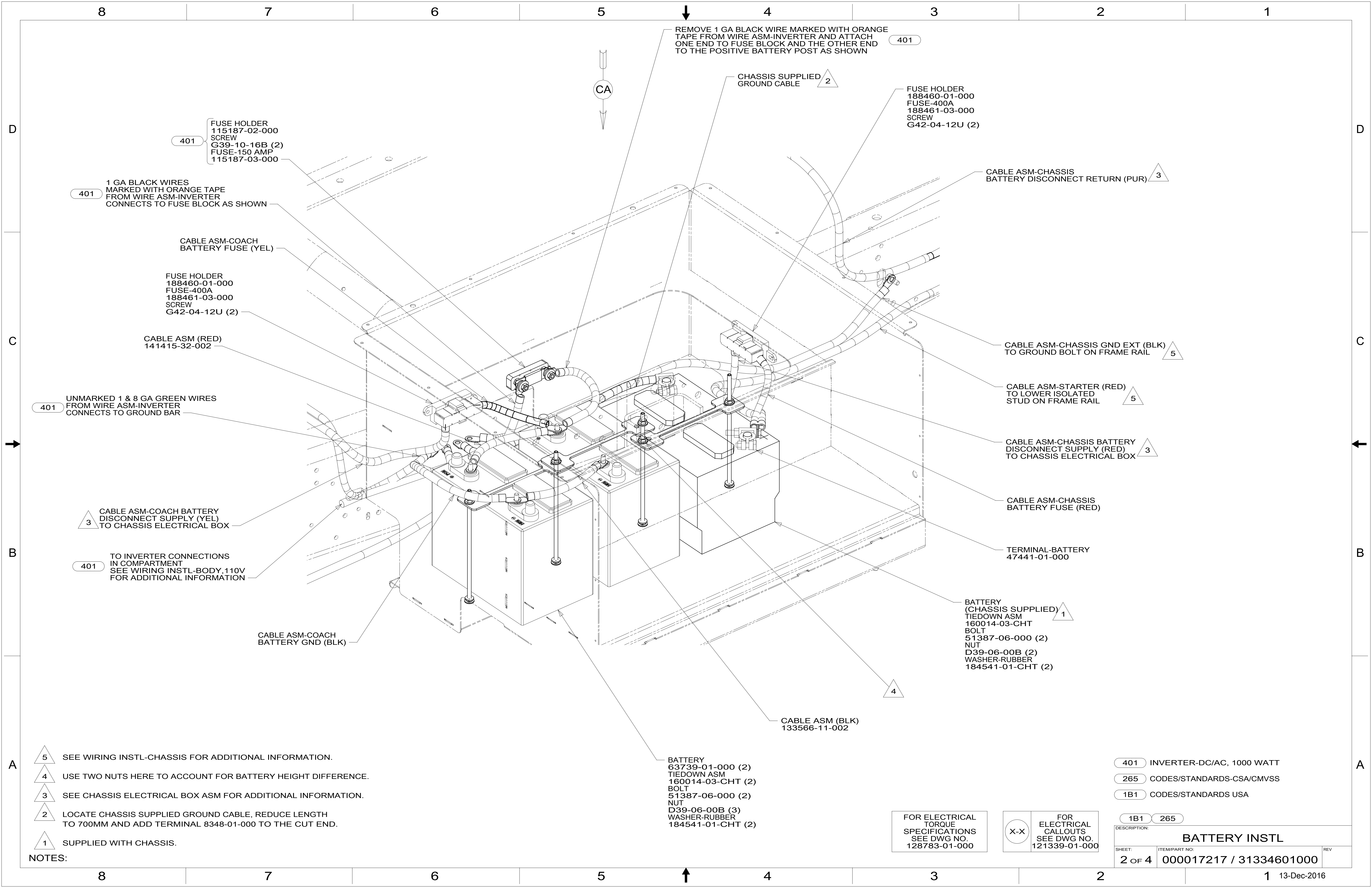
3

2

1



13-Dec-2016



REMOVE 1 GA BLACK WIRE MARKED WITH ORANGE TAPE FROM WIRE ASM-INVERTER AND ATTACH ONE END TO FUSE BLOCK AND THE OTHER END TO THE POSITIVE BATTERY POST AS SHOWN

401

CHASSIS SUPPLIED GROUND CABLE 2

FUSE HOLDER
188460-01-000
FUSE-400A
188461-03-000
SCREW
G42-04-12U (2)

CABLE ASM-CHASSIS BATTERY DISCONNECT RETURN (PUR) 3

401 FUSE HOLDER
115187-02-000
SCREW
G39-10-16B (2)
FUSE-150 AMP
115187-03-000

401 1 GA BLACK WIRES MARKED WITH ORANGE TAPE FROM WIRE ASM-INVERTER CONNECTS TO FUSE BLOCK AS SHOWN

CABLE ASM-COACH BATTERY FUSE (YEL)

FUSE HOLDER
188460-01-000
FUSE-400A
188461-03-000
SCREW
G42-04-12U (2)

CABLE ASM (RED)
141415-32-002

CABLE ASM-CHASSIS GND EXT (BLK) TO GROUND BOLT ON FRAME RAIL 5

401 UNMARKED 1 & 8 GA GREEN WIRES FROM WIRE ASM-INVERTER CONNECTS TO GROUND BAR

CABLE ASM-STARTER (RED) TO LOWER ISOLATED STUD ON FRAME RAIL 5

CABLE ASM-CHASSIS BATTERY DISCONNECT SUPPLY (RED) TO CHASSIS ELECTRICAL BOX 3

3 CABLE ASM-COACH BATTERY DISCONNECT SUPPLY (YEL) TO CHASSIS ELECTRICAL BOX

CABLE ASM-CHASSIS BATTERY FUSE (RED)

401 TO INVERTER CONNECTIONS IN COMPARTMENT SEE WIRING INSTL-BODY 110V FOR ADDITIONAL INFORMATION

TERMINAL-BATTERY
47441-01-000

CABLE ASM-COACH BATTERY GND (BLK)

BATTERY (CHASSIS SUPPLIED) TIEDOWN ASM
160014-03-CHT
BOLT
51387-06-000 (2)
NUT
D39-06-00B (2)
WASHER-RUBBER
184541-01-CHT (2)

CABLE ASM (BLK)
133566-11-002

BATTERY
63739-01-000 (2)
TIEDOWN ASM
160014-03-CHT (2)
BOLT
51387-06-000 (2)
NUT
D39-06-00B (3)
WASHER-RUBBER
184541-01-CHT (2)

- 401 INVERTER-DC/AC, 1000 WATT
- 265 CODES/STANDARDS-CSA/CMVSS
- 1B1 CODES/STANDARDS USA

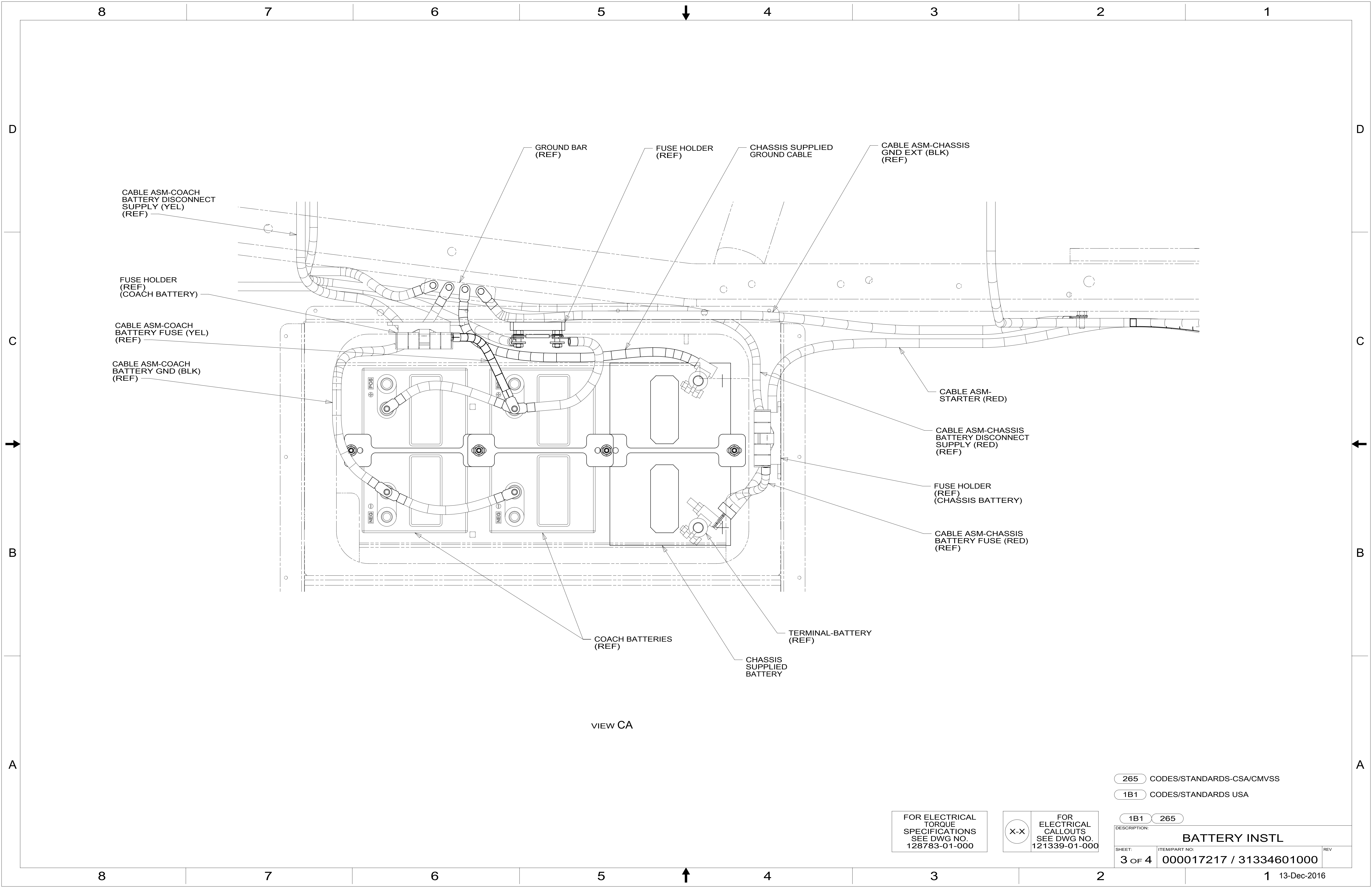
- 5 SEE WIRING INSTL-CHASSIS FOR ADDITIONAL INFORMATION.
- 4 USE TWO NUTS HERE TO ACCOUNT FOR BATTERY HEIGHT DIFFERENCE.
- 3 SEE CHASSIS ELECTRICAL BOX ASM FOR ADDITIONAL INFORMATION.
- 2 LOCATE CHASSIS SUPPLIED GROUND CABLE, REDUCE LENGTH TO 700MM AND ADD TERMINAL 8348-01-000 TO THE CUT END.
- 1 SUPPLIED WITH CHASSIS.

FOR ELECTRICAL TORQUE SPECIFICATIONS SEE DWG NO. 128783-01-000

FOR ELECTRICAL CALLOUTS SEE DWG NO. 121339-01-000

DESCRIPTION:		1B1 265	
BATTERY INSTL			
SHEET:	ITEM/PART NO.:	REV:	
2 OF 4	000017217 / 31334601000		

NOTES:



VIEW CA

265 CODES/STANDARDS-CSA/CMVSS

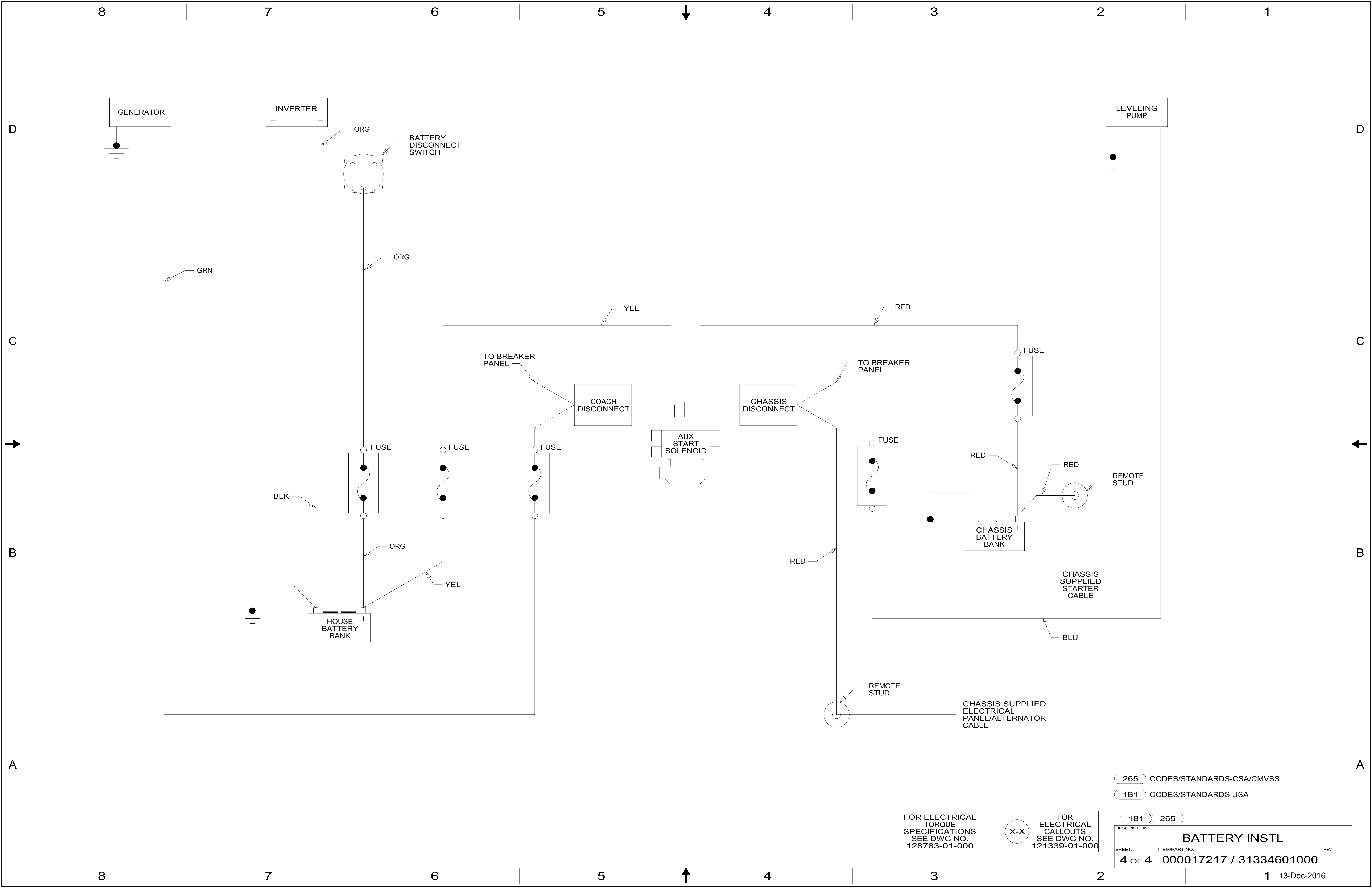
1B1 CODES/STANDARDS USA

1B1 265

FOR ELECTRICAL TORQUE SPECIFICATIONS SEE DWG NO. 128783-01-000

FOR ELECTRICAL CALLOUTS SEE DWG NO. 121339-01-000

DESCRIPTION:		
BATTERY INSTL		
SHEET:	ITEM/PART NO.:	REV
3 OF 4	000017217 / 31334601000	



265 CODES/STANDARDS-CSA/CMVSS

1B1 CODES/STANDARDS USA

1B1 265

FOR ELECTRICAL TORQUE SPECIFICATIONS SEE DWG NO. 128783-01-000

FOR ELECTRICAL CALLOUTS SEE DWG NO. 121339-01-000

DESCRIPTION: BATTERY INSTL		
SHEET: 4 OF 4	ITEM/PART NO: 000017217 / 31334601000	REV