

TO SUNVISOR SHADE
6 BUTT SPLICES
SOLAR SHADE
NIGHT SHADE
HHK-RED
HHL-BLK
HHM-RED
HHN-BLK
KE-BRN (2)

9 PIN HSG TO ROOF (45B)

12 PIN HSG TO WIRE ASM-LOFT BED

WIRE ASM-BED LIFT 000021331 / 314233-01-000 (5) (45B)

2 PIN HOUSING TO SIDEWALL

2 PIN HSG TO WIRE ASM-IP,MAIN (45B)

45D

TAPE (2) (400MM) (2)

READ-4 (45D)

RECEPTACLE-12V 111414-01-000

6 PIN HOUSING TO RIGHT MIRROR

USB-CHARGER DUAL,DC 188312-01-000

SWITCH-MAP LIGHT 174757-20-CHT
PANEL-SWITCH 174834-01-CHT

4 PIN HOUSING TO WIRE ASM-SIDEWALL,FRONT

FEMALE TERMINALS TO JACKS DOWN LAMP

BREAKER PANEL DETAIL BA

TO GROUND STUD

2 PIN HOUSING CONNECTS TO WIRE ASM-CLEARANCE FRONT

TO RELAYS

3.4 & 6 PIN HOUSINGS TO LEVELING SYSTEM CONTROLS

RING TERMINAL (6) TO GROUND BOLT

DETAIL CA

BUTT SPLICE (2) TO CB PREP DETAIL AA (579)

6 PIN HOUSING TO LEFT MIRROR

5 PIN HSG TO WIRE ASM-HEADLAMP

GROMMET 23942-02-000

TO CUSTOMERS CB RADIO WIRING (WHT YEL)

CB POWER PROVISION
YELLOW +12V
WHITE GROUND
COAX ANTENNA
(SEE REVERSE SIDE ALSO)

WIRE ASM-IP,MAIN
LABEL-CB PREP OPTION 104678-01-000 (4)

DETAIL AA (579)

TO CUSTOMERS CB RADIO WIRING (WHT YEL)

DETAIL AA (579)

- 5 SEE SHEET 10 FOR ADDITIONAL INFORMATION ON LOFT BED.
 - 4 EDGE OF LABEL TO HANG JUST BELOW BOTTOM OF DASH.
 - 3 CUT VISOR WIRING TO 300MM BEFORE CONNECTING.
 - 2 USE TAPE 8363-03-000 TO SECURE WIRES IN A-POST.
- NOTES:
- WINNEBAGO WIRE ASSEMBLIES ARE SHOWN FOR CLARITY.

- 45D LOFT BED - WITHOUT
- 45B LOFT BED
- 579 RADIO - CB WIRE PREP
- 265 CODES/STANDARDS-CSA/CMVSS
- 1B1 CODES/STANDARDS USA

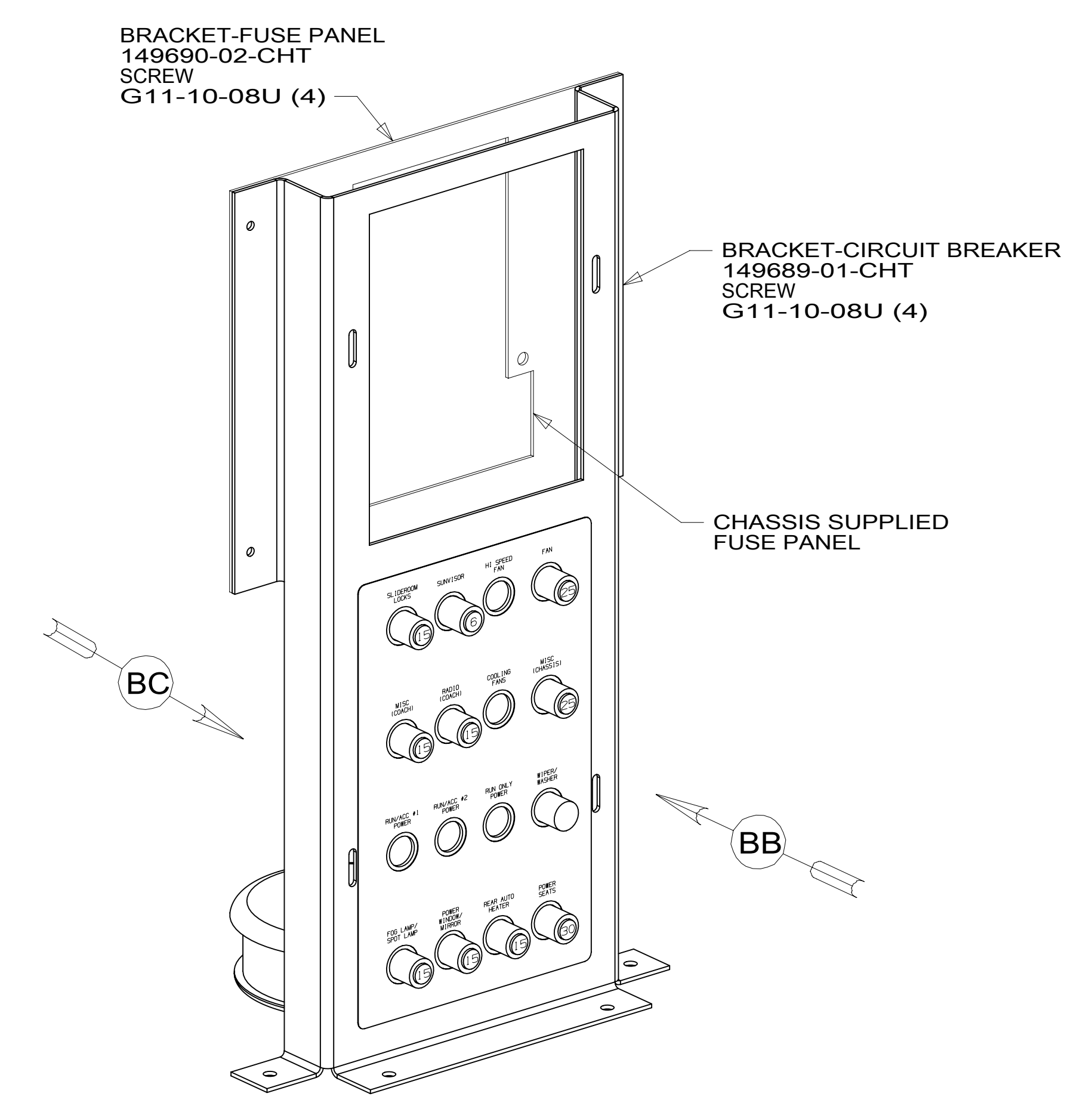
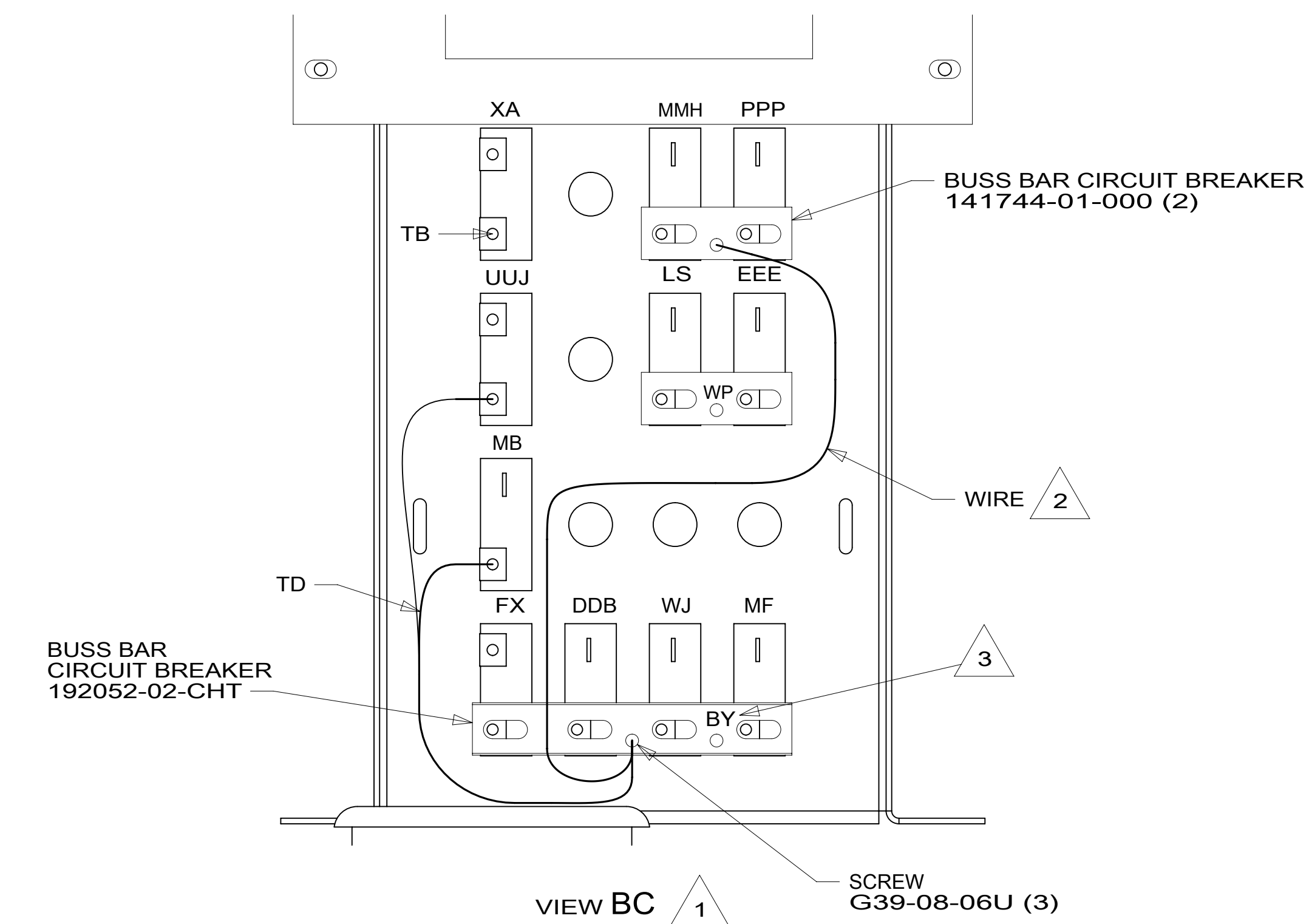
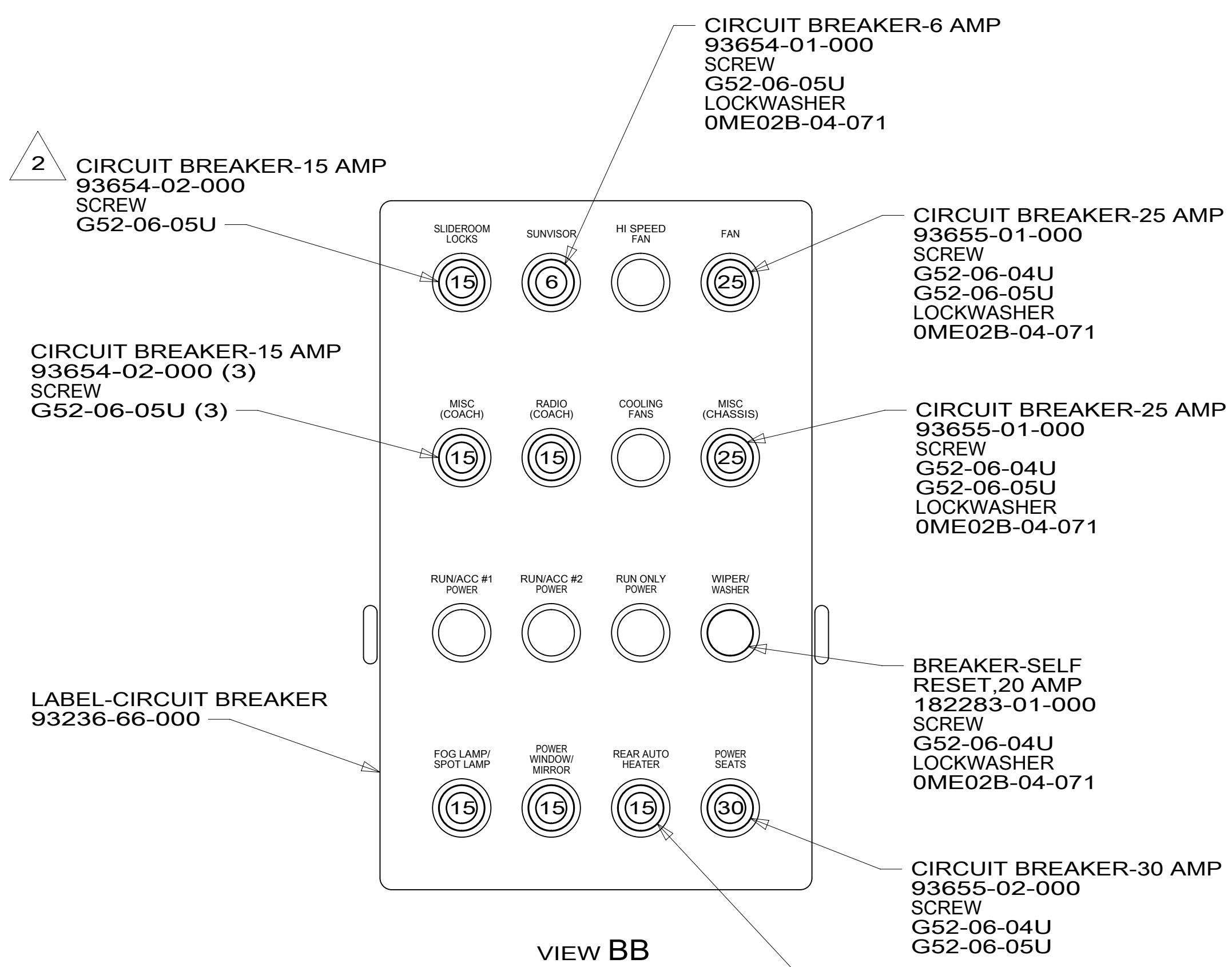
WINNEBAGO
COPYRIGHT 2016 WINNEBAGO INDUSTRIES, INC.

DSNR:	ALL DIMENSIONS ARE IN MILLIMETERS
DIFFR:	
UNSPECIFIED TOLERANCES:	MATERIAL:
WHOLE DIM (X) : 3	
ONE-PLACE (X.X) : 1.5	
TWO-PLACE (X.XX) : 0.50	
ANGLE : 1°	
REFER TO ES0018 FOR FASTENER TIGHTENING GUIDELINES	WEIGHT: (LBS) FIRST USED:
	17 D-SER
DESCRIPTION:	
WIRING INSTL-FRONT END	
SHEET: 1 OF 10	ITEM/PART NO: 000016447 / 31316501000
REF:	REV:

FOR ELECTRICAL TORQUE SPECIFICATIONS SEE DWG NO. 128783-01-000

FOR ELECTRICAL CALLOUTS SEE DWG NO. 121339-01-000

8 7 6 5 4 3 2 1



NOTES:

3 CIRCUIT IS PART OF WIRE ASM-CHASSIS.

2 USED ON D33C AND D35G FOR THE SLIDEOUT LOCK.

1 ALL CIRCUITS ARE IN WIRE ASM-IP, MAIN UNLESS OTHERWISE NOTED.

FOR ELECTRICAL TORQUE SPECIFICATIONS SEE DWG NO. 128783-01-000

FOR ELECTRICAL CALLOUTS SEE DWG NO. 121339-01-000

265	CODES/STANDARDS-CSA/CMVSS
1B1	CODES/STANDARDS USA
1B1	265
DESCRIPTION: WIRING INSTL-FRONT END	
SHEET: 2 OF 10	ITEM/PART NO: 000016447 / 31316501000
REV 1 26-Apr-2018	

8 7 6 5 4 3 2 1

2 3 LIGHT ASM-INDICATOR,RED
190682-01-000
LABEL-JACKS DOWN
133533-01-CHT

RELAY
63912-02-000 (5)
SCREW
G11-08-08U (5)

DETAIL DA

4 PIN HSG
TO WIRE ASM-HEADLAMP

DETAIL DB

FORD DIAGNOSTIC CONNECTOR
NUT-SPEED
40921-03-000
SCREW
G11-10-10U (2)

1

- 3 WIRING FROM LEVELING SYSTEM. SEE LEVELING SYSTEM INSTL FOR ADDITIONAL INFORMATION.
- 2 CONNECT POSITIVE WIRE TO TERMINAL MARKED WITH "RED".
- 1 CHASSIS SUPPLIED. REMOVE FROM TEMPORARY SHIPPING LOCATION AND MOUNT TO FRONT OF STEERING COLUMN COVER.

NOTES:

DETAIL CA

FOR ELECTRICAL
TORQUE
SPECIFICATIONS
SEE DWG NO.
128783-01-000

FOR
ELECTRICAL
CALLOUTS
SEE DWG NO.
121339-01-000

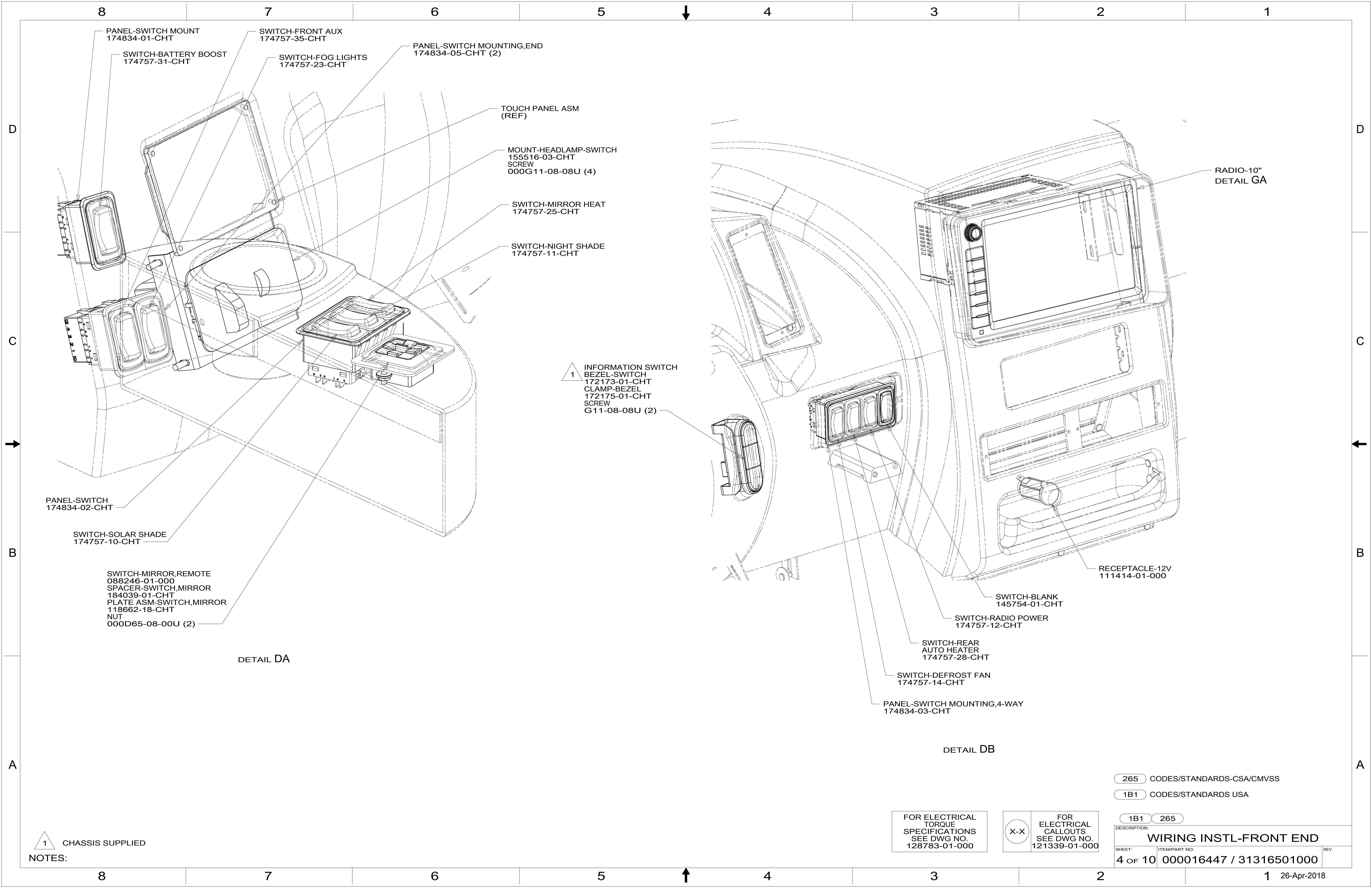
265 CODES/STANDARDS-CSA/CMVSS

1B1 CODES/STANDARDS USA

1B1 265

DESCRIPTION:
WIRING INSTL-FRONT END

SHEET: 3 OF 10 ITEM/PART NO: 000016447 / 31316501000 REV



8 PANEL-SWITCH MOUNT
174834-01-CHT

7 SWITCH-FRONT AUX
174757-35-CHT

6 PANEL-SWITCH MOUNTING,END
174834-05-CHT (2)

SWITCH-FOG LIGHTS
174757-23-CHT

SWITCH-BATTERY BOOST
174757-31-CHT

TOUCH PANEL ASM
(REF)

MOUNT-HEADLAMP-SWITCH
155516-03-CHT
SCREW
000G11-08-08U (4)

SWITCH-MIRROR HEAT
174757-25-CHT

SWITCH-NIGHT SHADE
174757-11-CHT

RADIO-10"
DETAIL GA

1 INFORMATION SWITCH
BEZEL-SWITCH
172173-01-CHT
CLAMP-BEZEL
172175-01-CHT
SCREW
G11-08-08U (2)

PANEL-SWITCH
174834-02-CHT

SWITCH-SOLAR SHADE
174757-10-CHT

SWITCH-MIRROR,REMOTE
088246-01-000
SPACER-SWITCH,MIRROR
184039-01-CHT
PLATE ASM-SWITCH,MIRROR
118662-18-CHT
NUT
000D65-08-00U (2)

DETAIL DA

RECEPTACLE-12V
111414-01-000

SWITCH-BLANK
145754-01-CHT

SWITCH-RADIO POWER
174757-12-CHT

SWITCH-REAR
AUTO HEATER
174757-28-CHT

SWITCH-DEFROST FAN
174757-14-CHT

PANEL-SWITCH MOUNTING,4-WAY
174834-03-CHT

DETAIL DB

265 CODES/STANDARDS-CSA/CMVSS

1B1 CODES/STANDARDS USA

1B1 265

FOR ELECTRICAL
TORQUE
SPECIFICATIONS
SEE DWG NO.
128783-01-000

FOR
ELECTRICAL
CALLOUTS
SEE DWG NO.
121339-01-000

DESCRIPTION:
WIRING INSTL-FRONT END

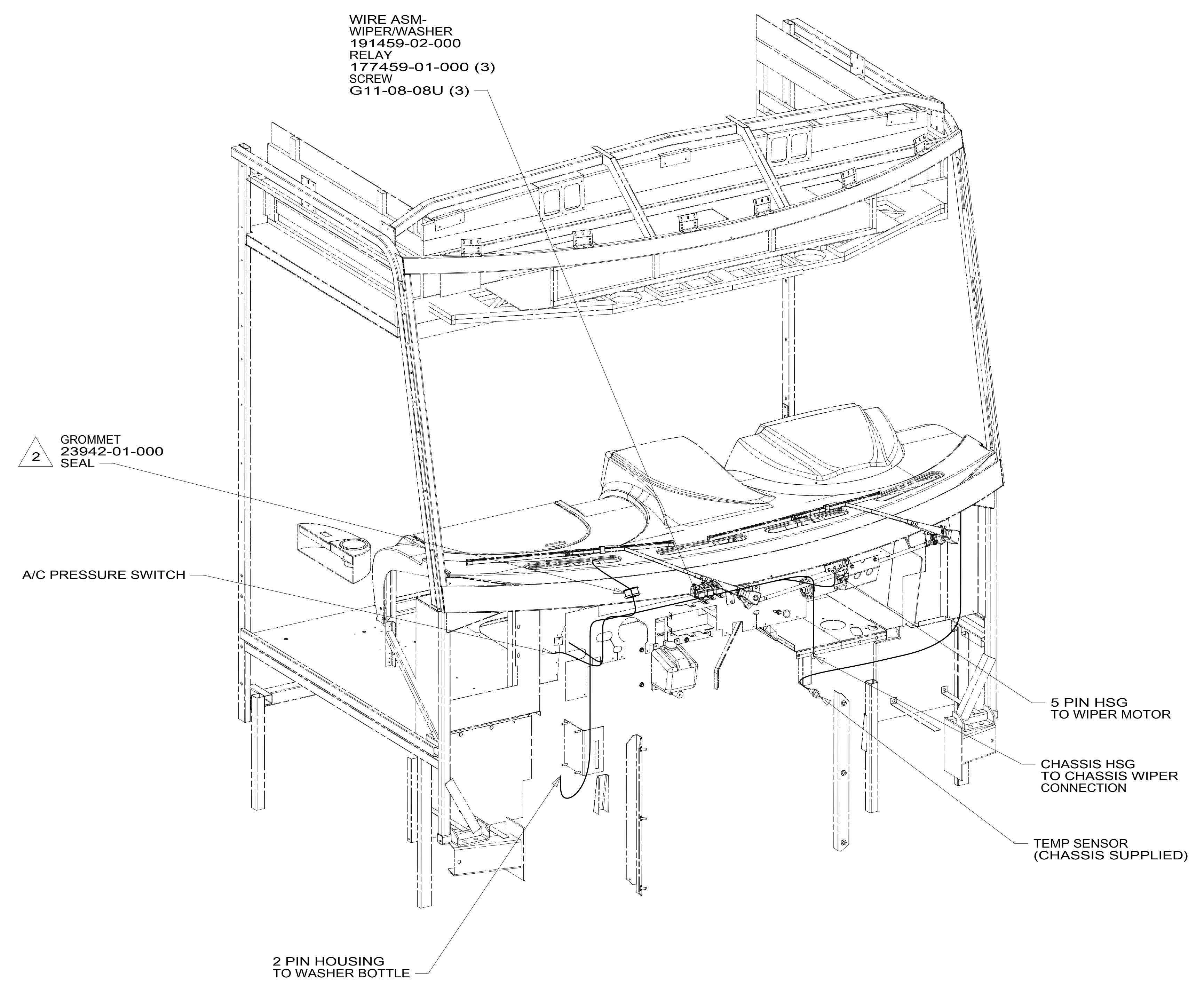
SHEET: 4 OF 10 ITEM/PART NO: 000016447 / 31316501000 REV

1 CHASSIS SUPPLIED

NOTES:

8 7 6 5 4 3 2 1

D
C
B
A



DETAIL EA

2 ROUTE WIRES THROUGH HOLE IN STEEL.

1. GATHER ALL EXCESS WIRE AFTER MAKING ALL CONNECTIONS. BUNDLE AND SECURE WITH WIRE TIE 8343-01-000 OR 93147-01-000.

NOTES:

265 CODES/STANDARDS-CSA/CMVSS
1B1 CODES/STANDARDS USA

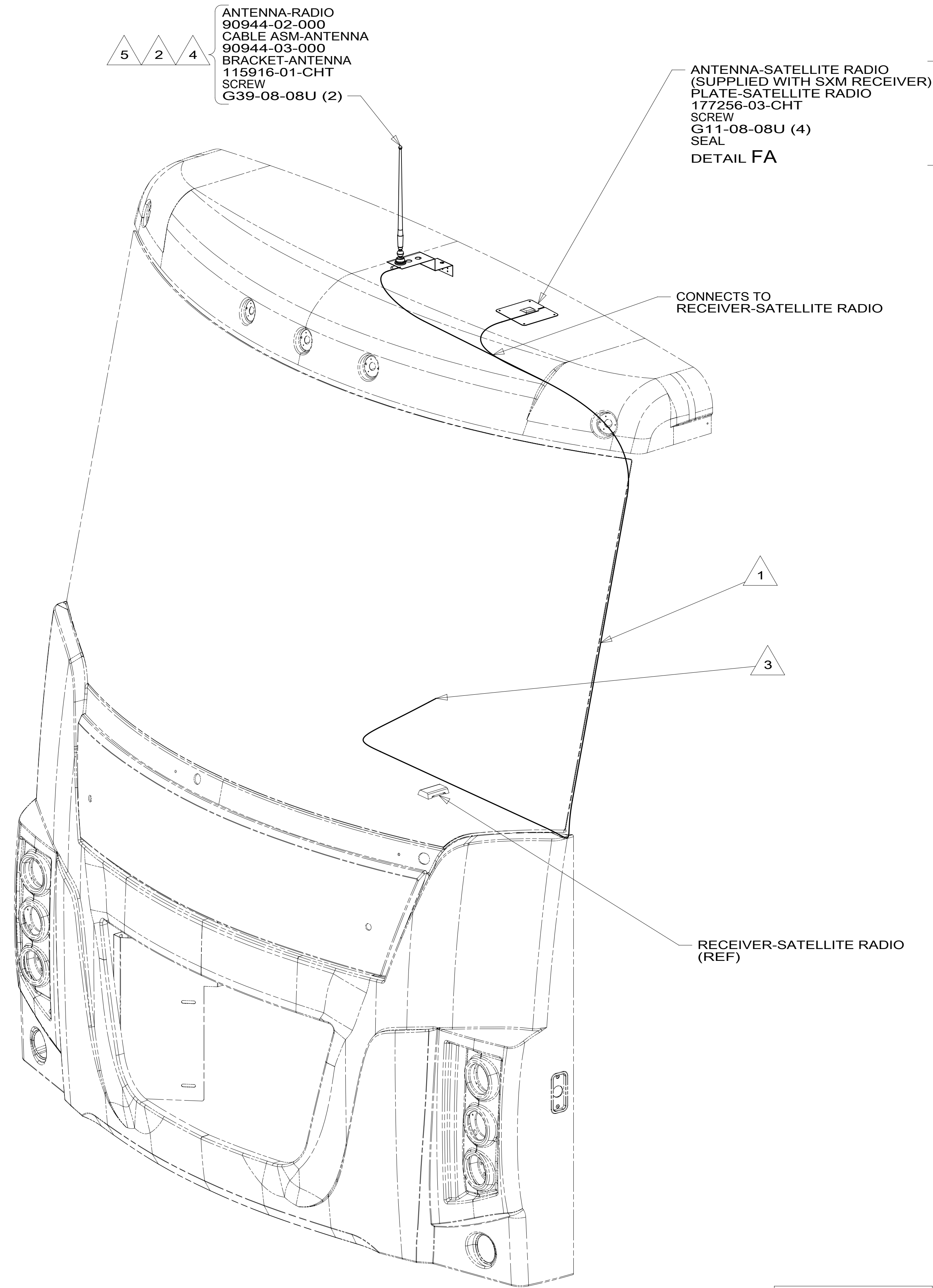
FOR ELECTRICAL TORQUE SPECIFICATIONS SEE DWG NO. 128783-01-000

FOR ELECTRICAL CALLOUTS SEE DWG NO. 121339-01-000

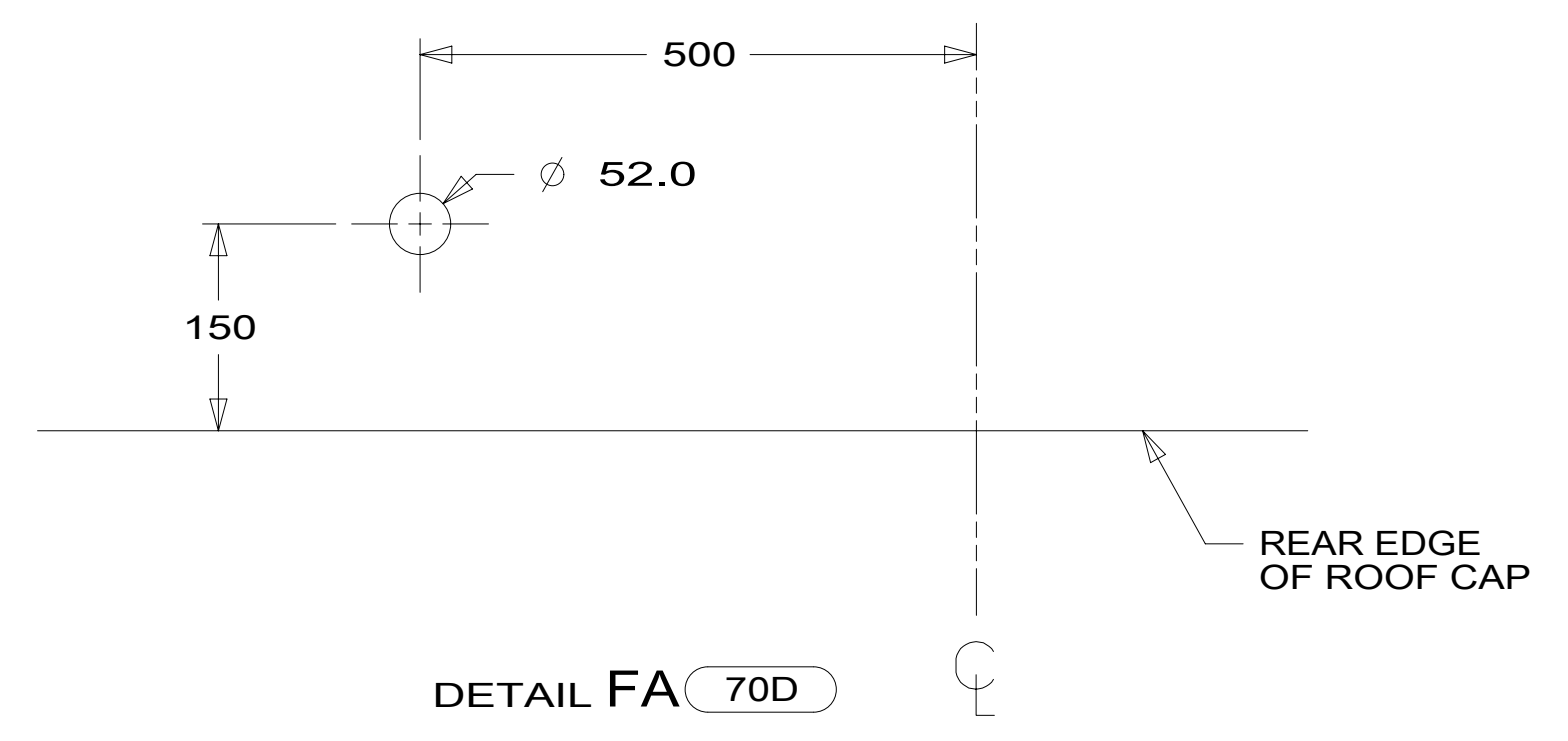
DESCRIPTION:	1B1 265	
WIRING INSTL-FRONT END		
SHEET:	ITEM/PART NO:	REV
5 OF 10	000016447 / 31316501000	

8 7 6 5 4 3 2 1 26-Apr-2018

8 7 6 5 4 3 2 1



70D 6



- 6 MOUNT ANTENNA SUCH THAT BASE IS SQUARE W/REAR OF ROOF CAP & HOLE IS DIRECTLY OVER HOLE IN FIBERGLASS. SEAL HOLE IN ROOF CAP, BASE AT SCREWS.
- 5 REMOVE AND REINSTALL AFTER PAINT.
- 4 USE HOLE IN BRACKET AS GUIDE TO DRILL 13 DIAMETER HOLE IN FIBERGLASS.
- 3 TO RADIO.
- 2 SEAL AROUND ANTENNA BASE.
- 1 ROUTE CABLE ALONG A-POST, UNDER TRIM COVER.

NOTES:

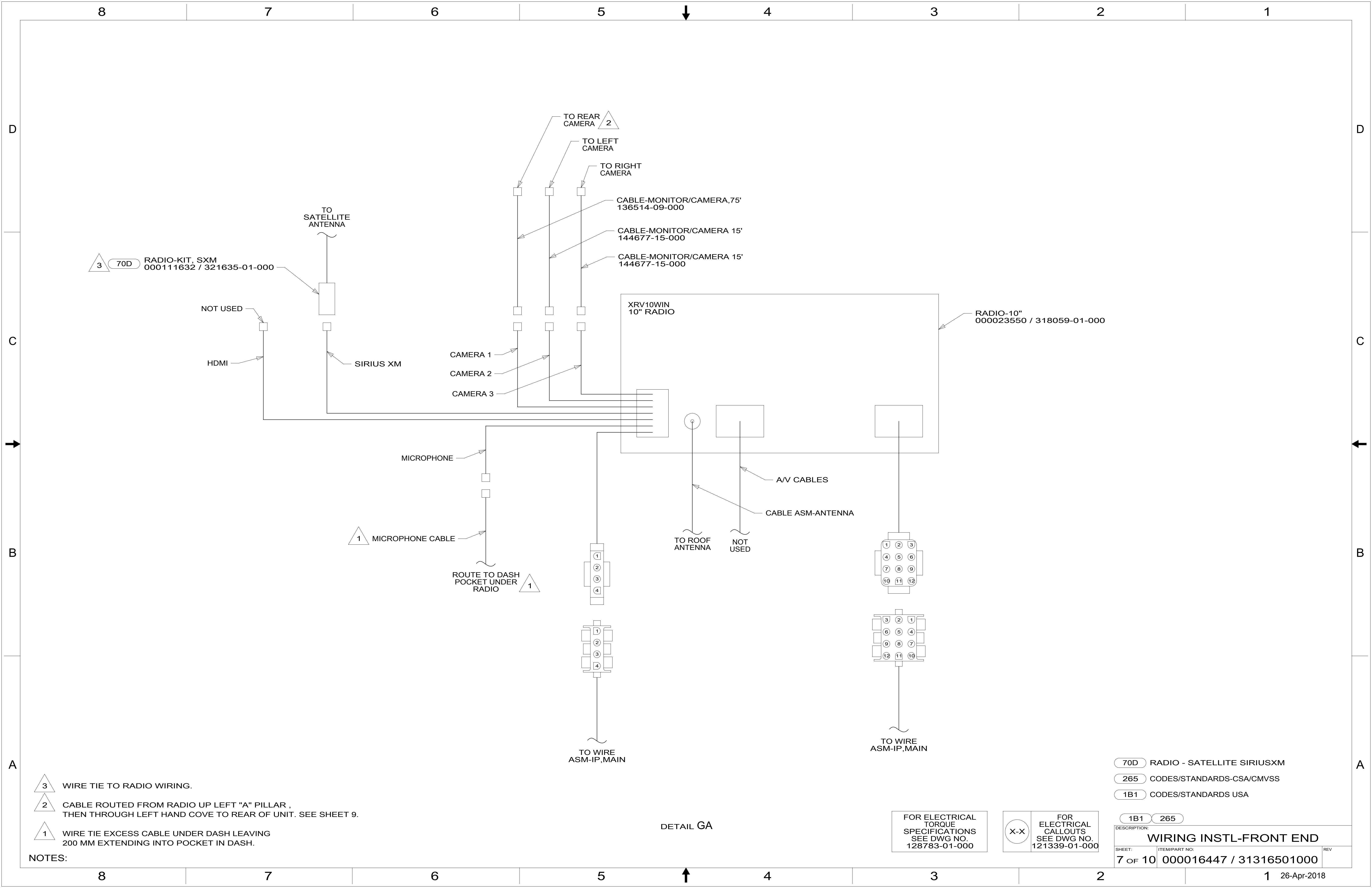
FOR ELECTRICAL TORQUE SPECIFICATIONS SEE DWG NO. 128783-01-000

FOR ELECTRICAL CALLOUTS SEE DWG NO. 121339-01-000

- 70D RADIO - SATELLITE SIRIUSXM
- 265 CODES/STANDARDS-CSA/CMVSS
- 1B1 CODES/STANDARDS USA

DESCRIPTION:		1B1 265
WIRING INSTL-FRONT END		
SHEET:	ITEM/PART NO.:	REV
6 OF 10	000016447 / 31316501000	

8 7 6 5 4 3 2 1 26-Apr-2018



3 70D RADIO-KIT, SXM
000111632 / 321635-01-000

NOT USED

HDMI

TO SATELLITE ANTENNA

SIRIUS XM

CAMERA 1

CAMERA 2

CAMERA 3

TO REAR CAMERA 2

TO LEFT CAMERA

TO RIGHT CAMERA

CABLE-MONITOR/CAMERA,75'
136514-09-000

CABLE-MONITOR/CAMERA 15'
144677-15-000

CABLE-MONITOR/CAMERA 15'
144677-15-000

XRV10WIN
10" RADIO

RADIO-10"
000023550 / 318059-01-000

MICROPHONE

1 MICROPHONE CABLE

ROUTE TO DASH
POCKET UNDER
RADIO 1

1
2
3
4

1
2
3
4

TO WIRE
ASM-IP,MAIN

TO ROOF
ANTENNA

NOT
USED

A/V CABLES

CABLE ASM-ANTENNA

1 2 3
4 5 6
7 8 9
10 11 12

3 2 1
6 5 4
9 8 7
12 11 10

TO WIRE
ASM-IP,MAIN

- NOTES:
- 3 WIRE TIE TO RADIO WIRING.
 - 2 CABLE ROUTED FROM RADIO UP LEFT "A" PILLAR , THEN THROUGH LEFT HAND COVE TO REAR OF UNIT. SEE SHEET 9.
 - 1 WIRE TIE EXCESS CABLE UNDER DASH LEAVING 200 MM EXTENDING INTO POCKET IN DASH.

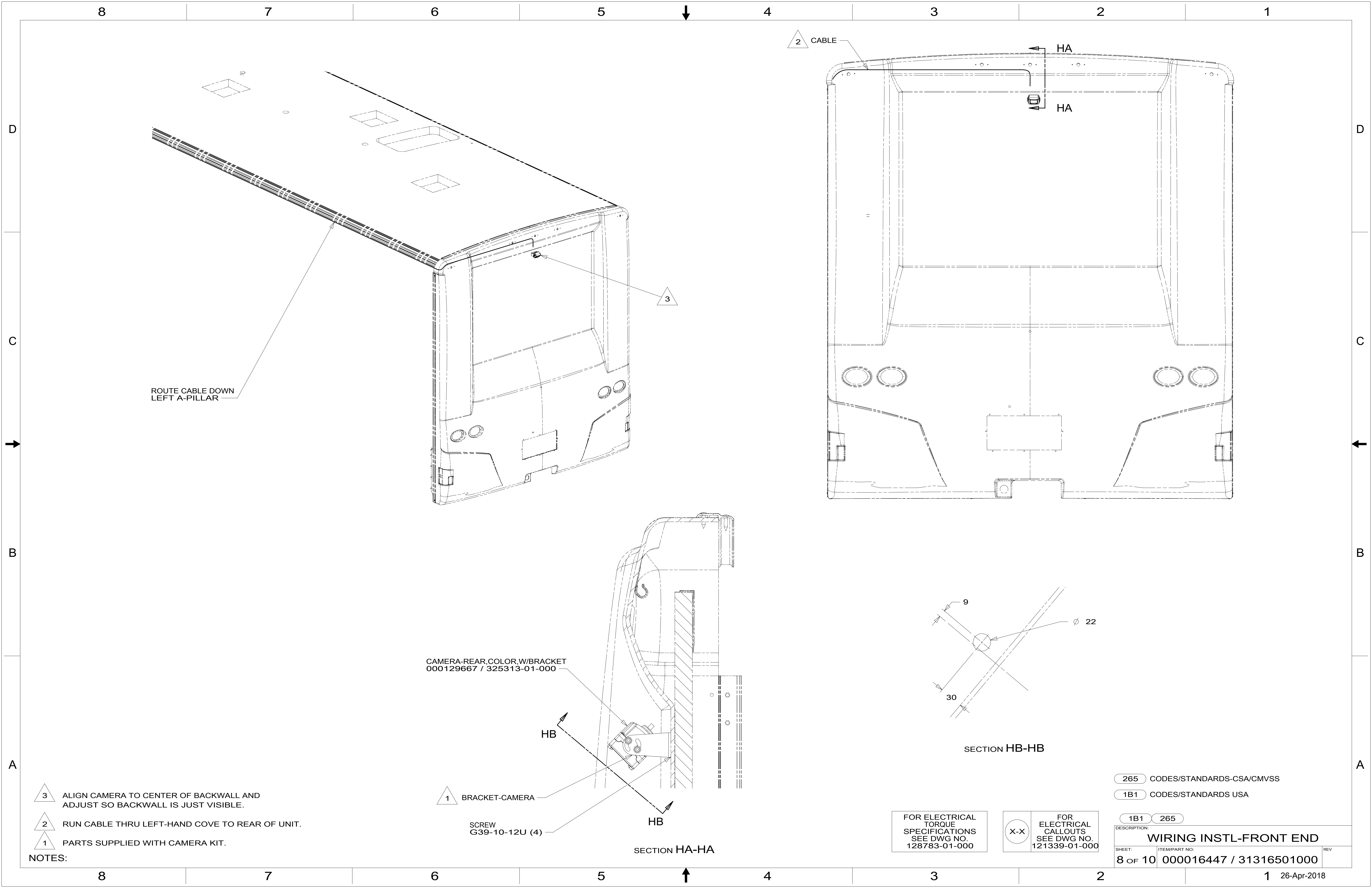
DETAIL GA

FOR ELECTRICAL TORQUE SPECIFICATIONS SEE DWG NO. 128783-01-000

FOR ELECTRICAL CALLOUTS SEE DWG NO. 121339-01-000

- 70D RADIO - SATELLITE SIRIUSXM
- 265 CODES/STANDARDS-CSA/CMVSS
- 1B1 CODES/STANDARDS USA

DESCRIPTION:		1B1 265	
WIRING INSTL-FRONT END			
SHEET:	ITEM/PART NO.:	REV	
7 of 10	000016447 / 31316501000		



ROUTE CABLE DOWN
LEFT A-PILLAR

CAMERA-REAR, COLOR, W/BACKET
000129667 / 325313-01-000

FOR ELECTRICAL
TORQUE
SPECIFICATIONS
SEE DWG NO.
128783-01-000

FOR
ELECTRICAL
CALLOUTS
SEE DWG NO.
121339-01-000

265 CODES/STANDARDS-CSA/CMVSS

1B1 CODES/STANDARDS USA

1B1 265

DESCRIPTION:
WIRING INSTL-FRONT END

SHEET: 8 OF 10 ITEM/PART NO: 000016447 / 31316501000 REV

- NOTES:
- 3 ALIGN CAMERA TO CENTER OF BACKWALL AND ADJUST SO BACKWALL IS JUST VISIBLE.
 - 2 RUN CABLE THRU LEFT-HAND COVE TO REAR OF UNIT.
 - 1 PARTS SUPPLIED WITH CAMERA KIT.

SECTION HA-HA

SECTION HB-HB

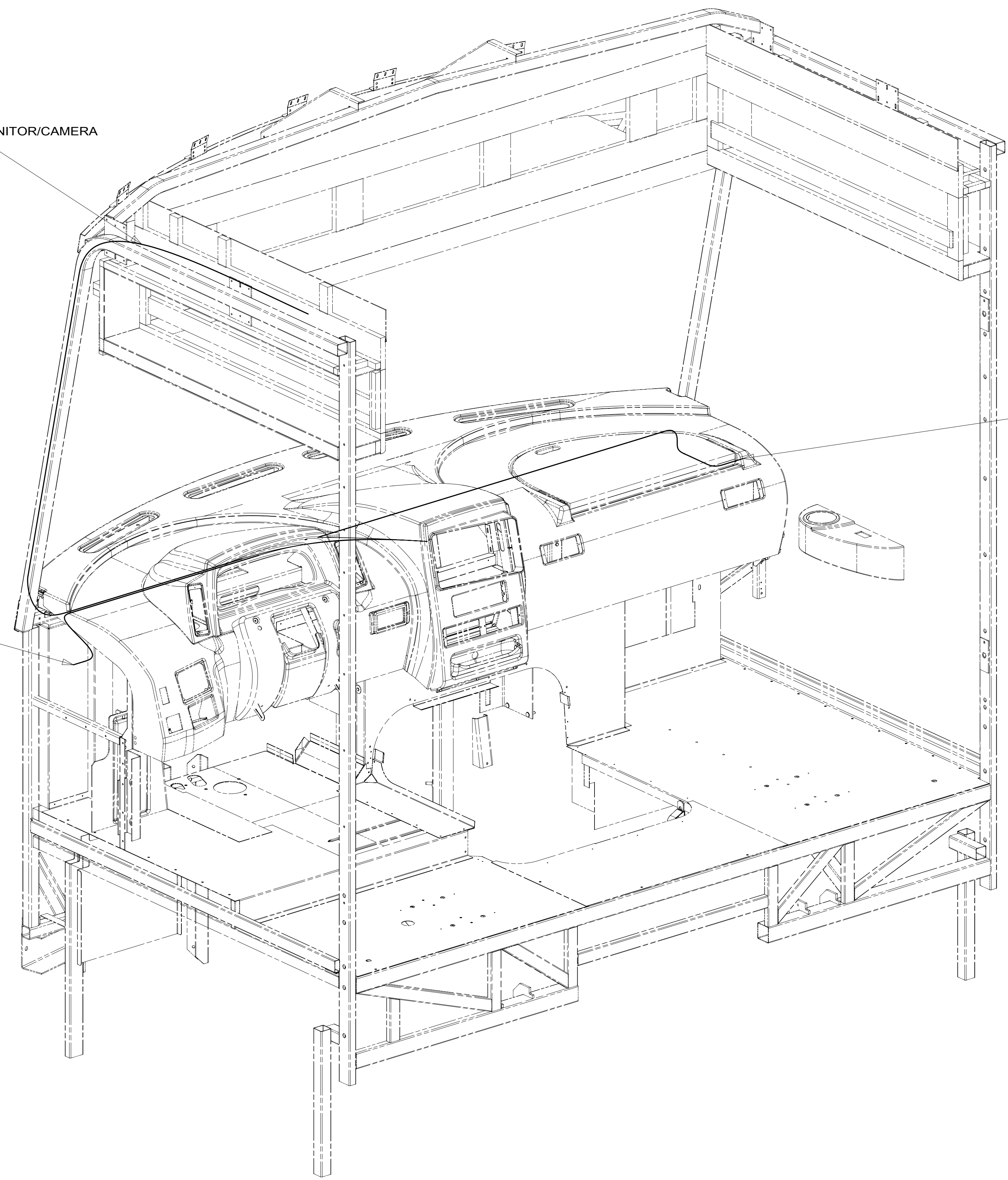
8 7 6 5 4 3 2 1

D
C
B
A

CABLE-MONITOR/CAMERA
(REF)

CABLE-SIDE CAMERA
(REF) 1

1 CABLE-SIDE CAMERA
(REF)



1 CONNECT CAMERA CABLE TO MIRROR.

NOTES:

FOR ELECTRICAL
TORQUE
SPECIFICATIONS
SEE DWG NO.
128783-01-000

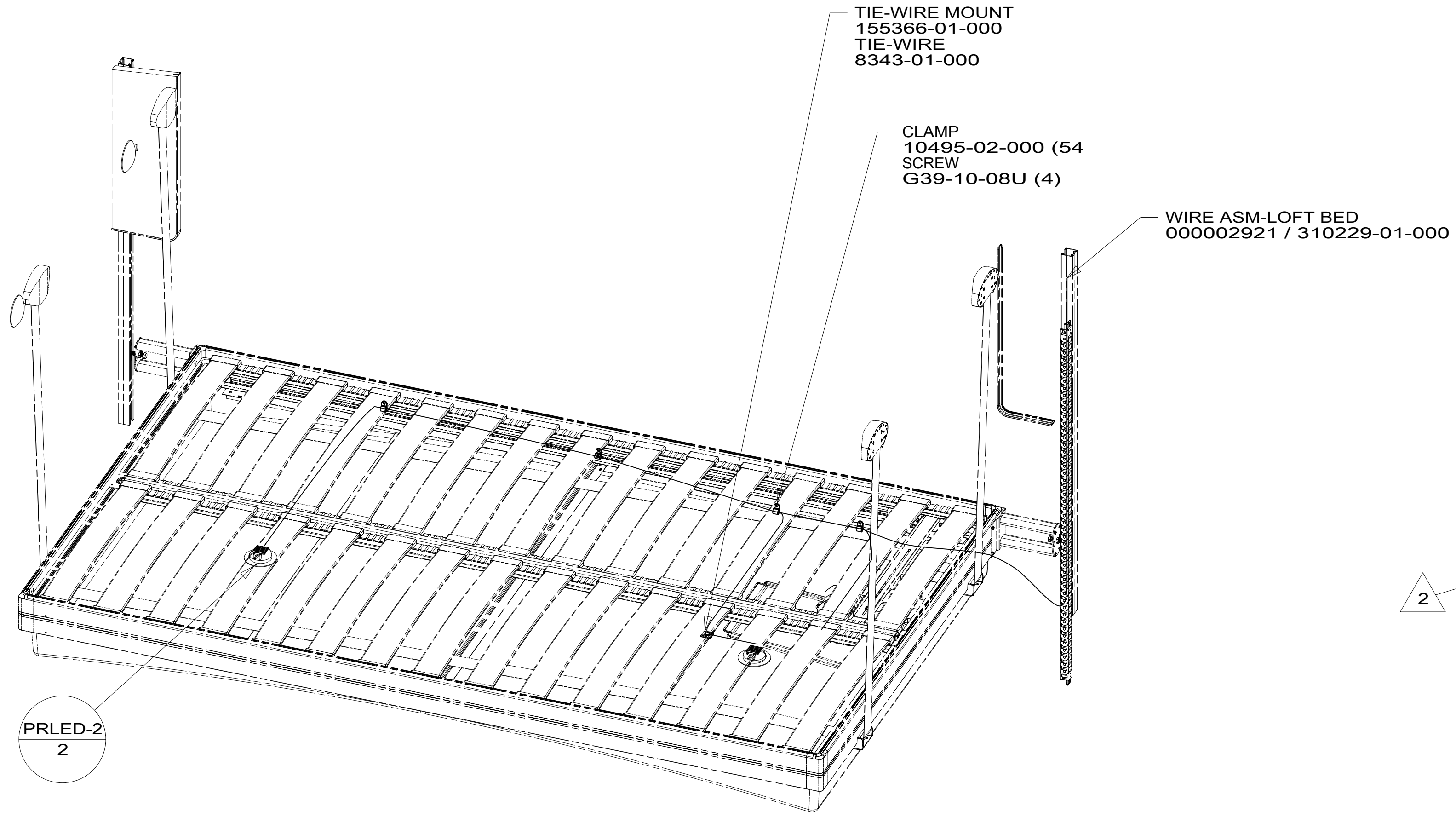
FOR
ELECTRICAL
CALLOUTS
SEE DWG NO.
121339-01-000

- 265 CODES/STANDARDS-CSA/CMVSS
- 1B1 CODES/STANDARDS USA

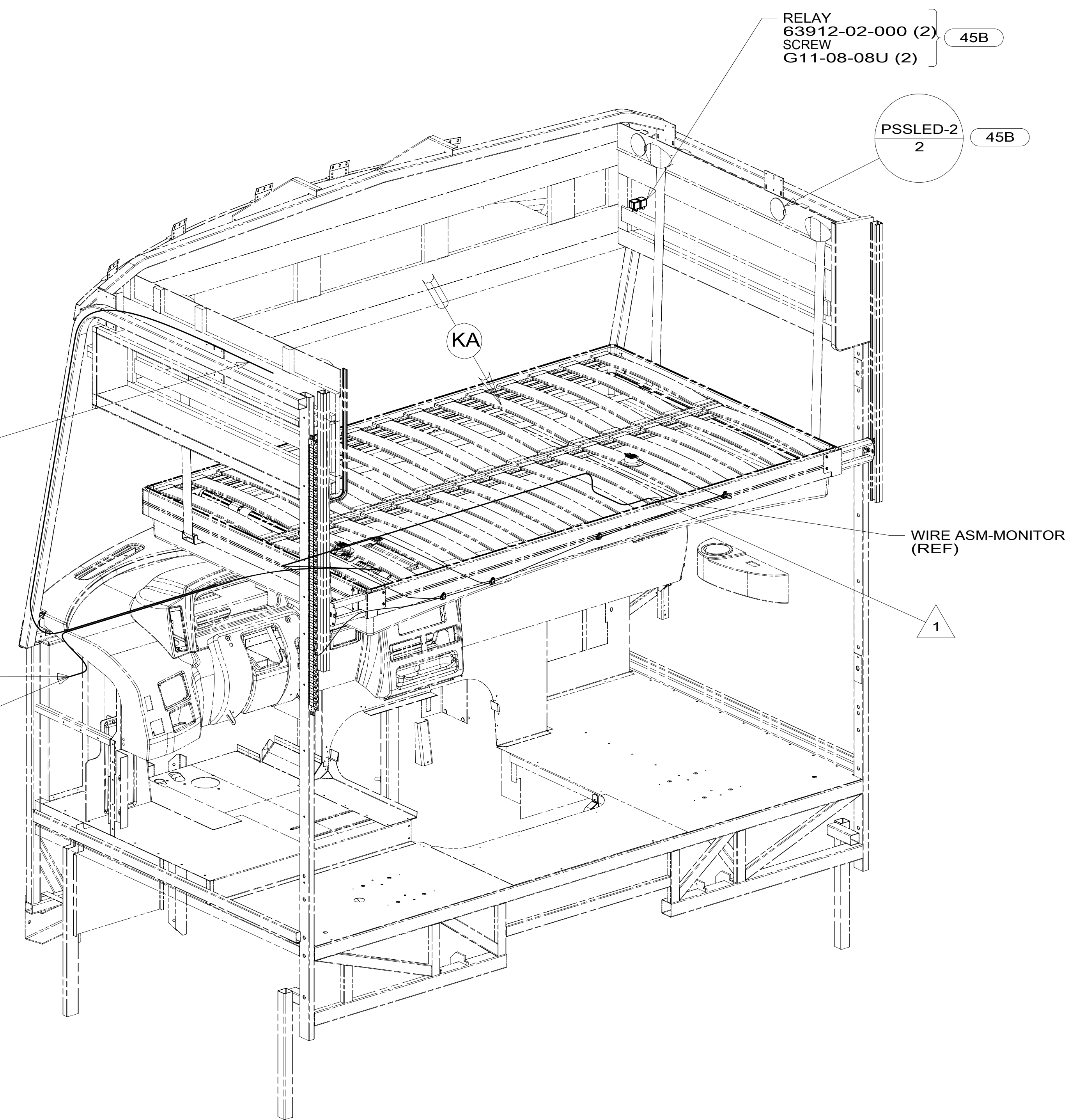
1B1 265	
DESCRIPTION: WIRING INSTL-FRONT END	
SHEET: 9 OF 10	ITEM/PART NO: 000016447 / 31316501000
REV	

8 7 6 5 4 3 2 1 26-Apr-2018

8 7 6 5 4 3 2 1



DETAIL KA 45B



- NOTES:
- 2 RUN CABLE THRU LEFT-HAND COVE TO REAR OF UNIT. SEE SHEET 9.
 - 1 CONNECT CAMERA THRU HOLE IN SIDEWALL, PUSH CONNECTOR BACK THRU SIDEWALL, AND SEAL HOLE.

FOR ELECTRICAL TORQUE SPECIFICATIONS SEE DWG NO. 128783-01-000

FOR ELECTRICAL CALLOUTS SEE DWG NO. 121339-01-000

- 45B LOFT BED
- 265 CODES/STANDARDS-CSA/CMVSS
- 1B1 CODES/STANDARDS USA

DESCRIPTION:	
WIRING INSTL-FRONT END	
SHEET:	ITEM/PART NO. REV
10 OF 10	000016447 / 31316501000

8 7 6 5 4 3 2 1 26-Apr-2018