

8 7 6 5 4 3 2 1

D

D

C

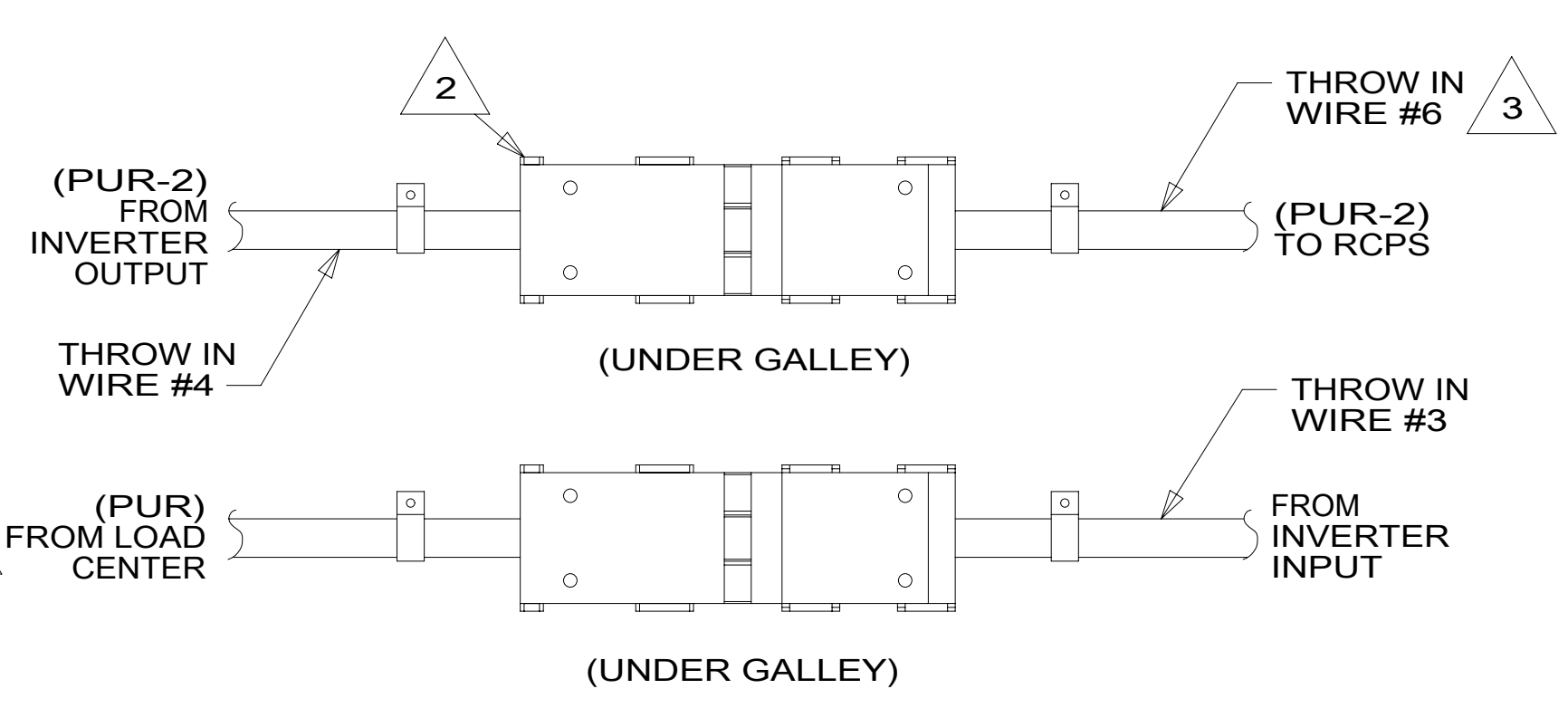
C

B

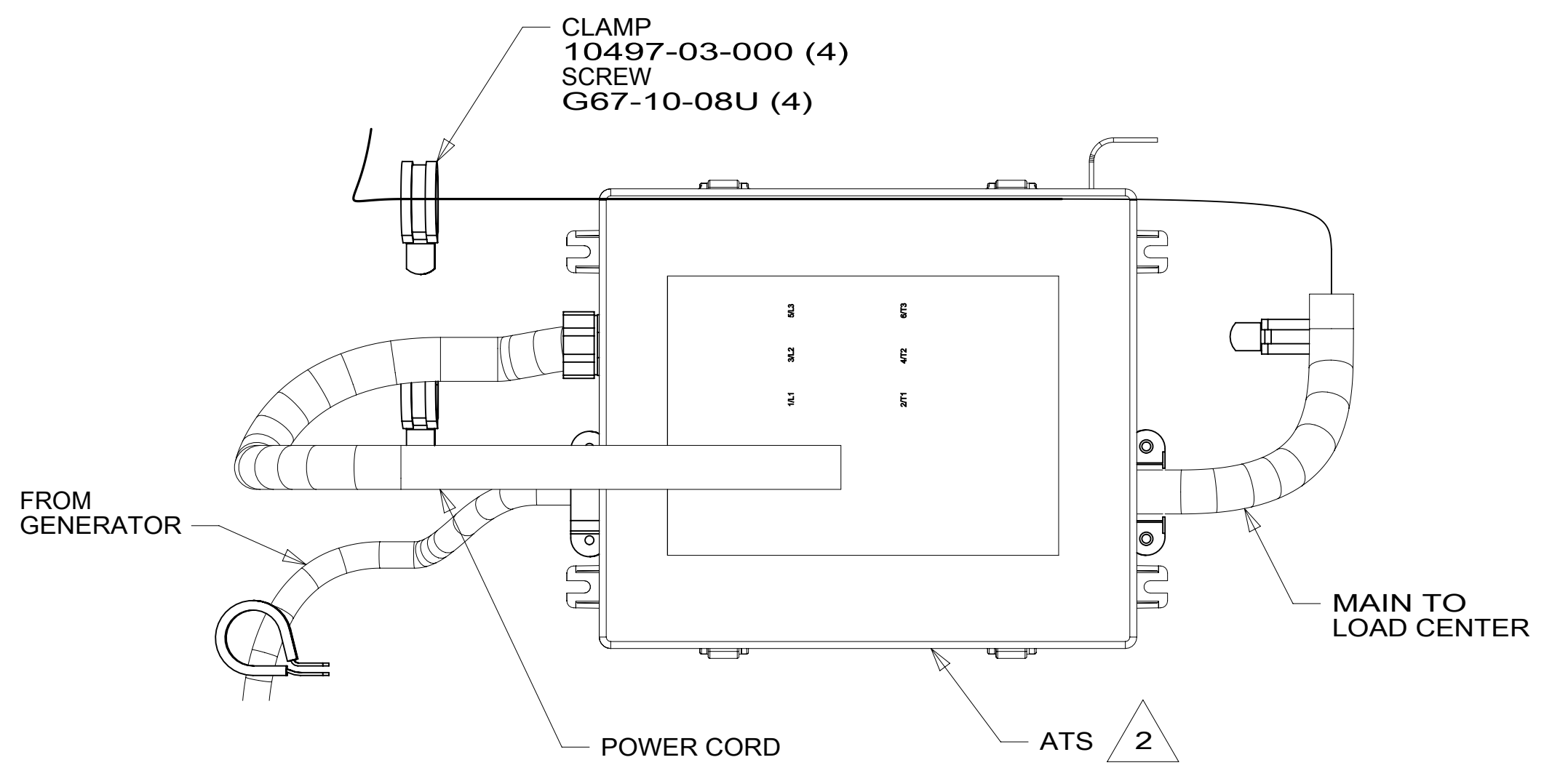
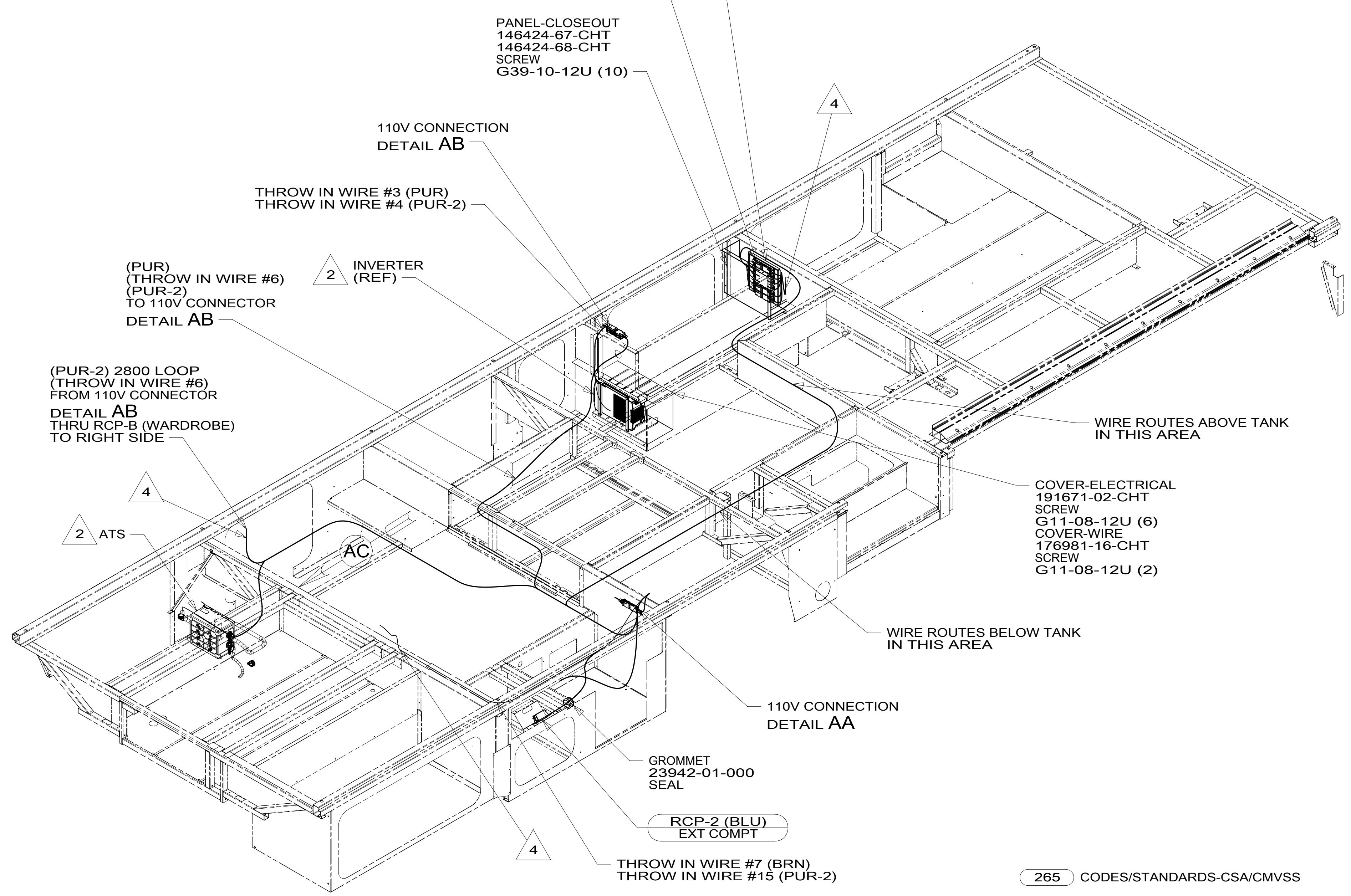
B

A

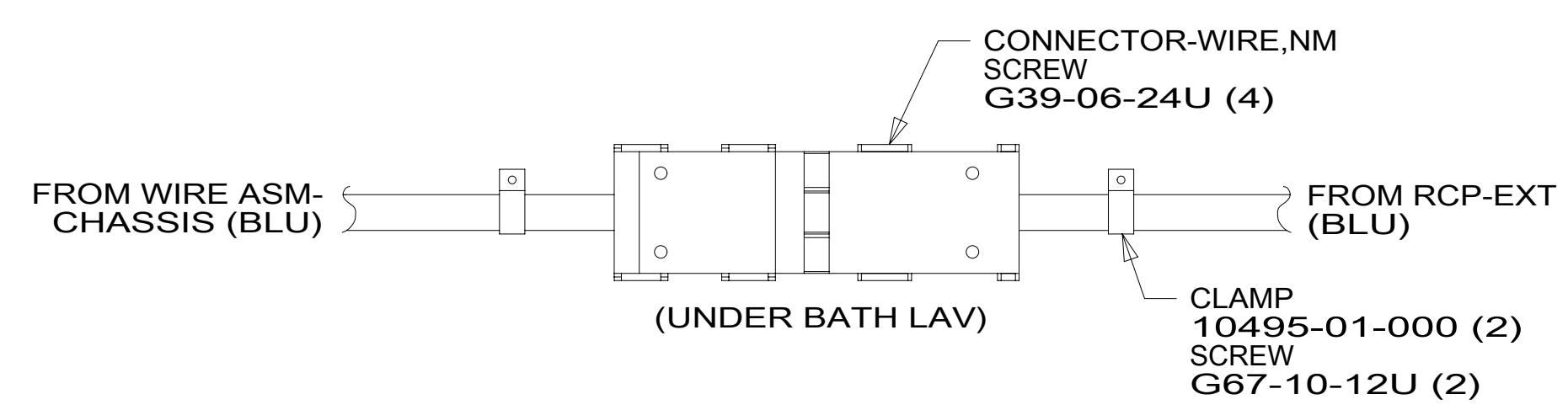
A



DETAIL AB



VIEW AC



DETAIL AA

5. AT MINIMUM ALL WIRES TO BE SUPPORTED AND SECURED PER CODE REQUIREMENTS. USE CLAMP 10495 OR 10497 OR WIRE TIE 8343 OR 108046 AND SCREW G67-XX-XXX OR G56-XX-XXX AS APPROPRIATE FOR INSTALLATION.

- 4 WIRE ROUTED THROUGH FLOOR IN THIS AREA.
- 3 WITHOUT INVERTER THROW IN #2 (PUR-2) CONNECTS TO (PUR) FROM LOAD CENTER.
- 2 SEE LOAD CENTER/ATS ASM FOR ADDITIONAL INFORMATION.

1. WIRES ROUTED UNDER FLOOR.

NOTES:

- 265 CODES/STANDARDS-CSA/CMVSS
- 1B1 CODES/STANDARDS USA
- 1B1 265

WINNEBAGO
COPYRIGHT 2016 WINNEBAGO INDUSTRIES, INC.

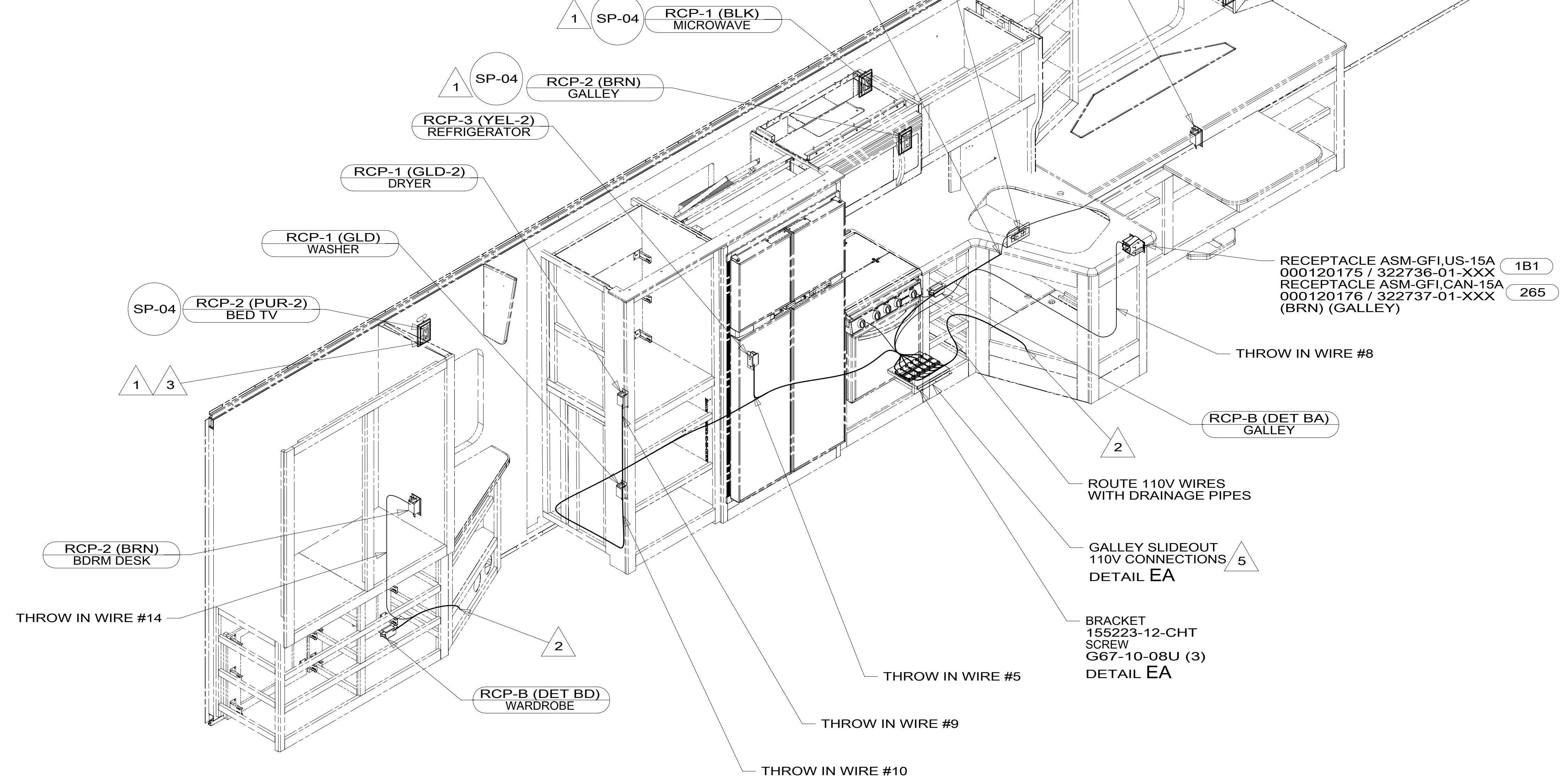
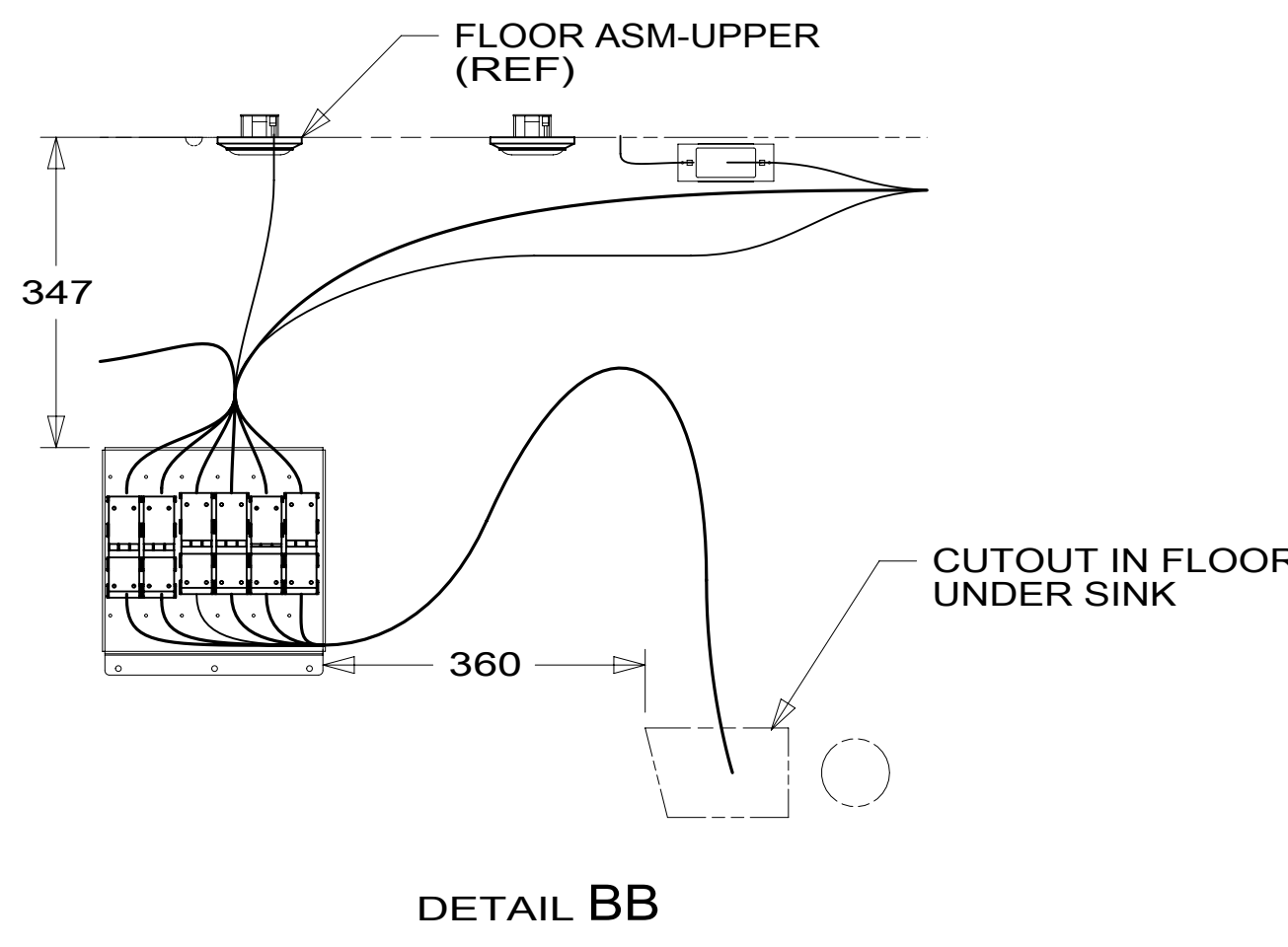
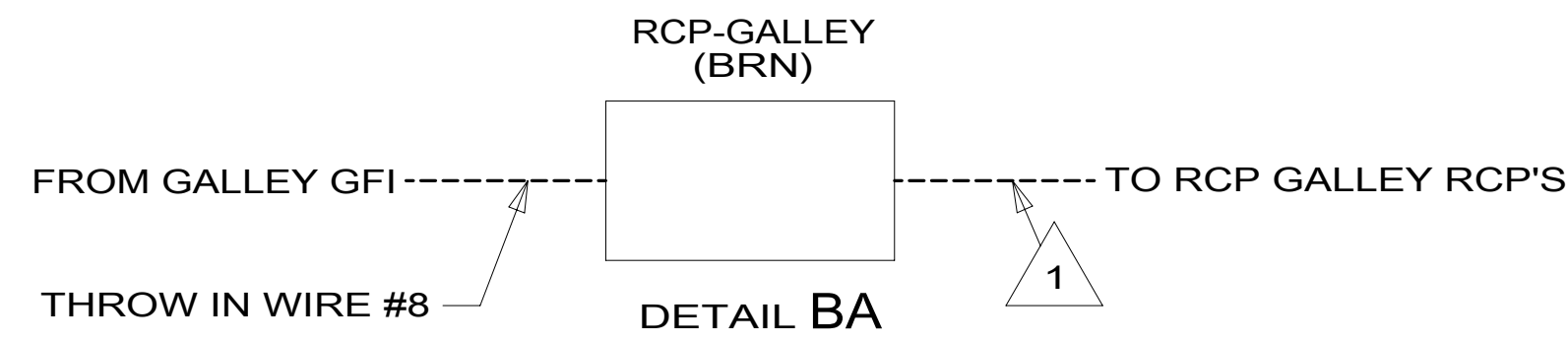
DSNR:	ALL DIMENSIONS ARE IN MILLIMETERS	
DfTR:		
UNSPECIFIED TOLERANCES:	MATERIAL:	
WHOLE DIM (X) : 3		
ONE-PLACE (X.X) : 1.5		
TWO-PLACE (X.XX) : 0.50		
ANGLE : 1°		
REFER TO ES0018 FOR FASTENER TIGHTENING GUIDELINES	WEIGHT: (LBS)	FIRST USED:
		17 D33C
DESCRIPTION:		
WIRING INSTL-BODY, 110V		
SHEET:	ITEM/PART NO:	REV
1 OF 6	000016445 / 31316301000	

FOR ELECTRICAL TORQUE SPECIFICATIONS SEE DWG NO. 128783-01-000

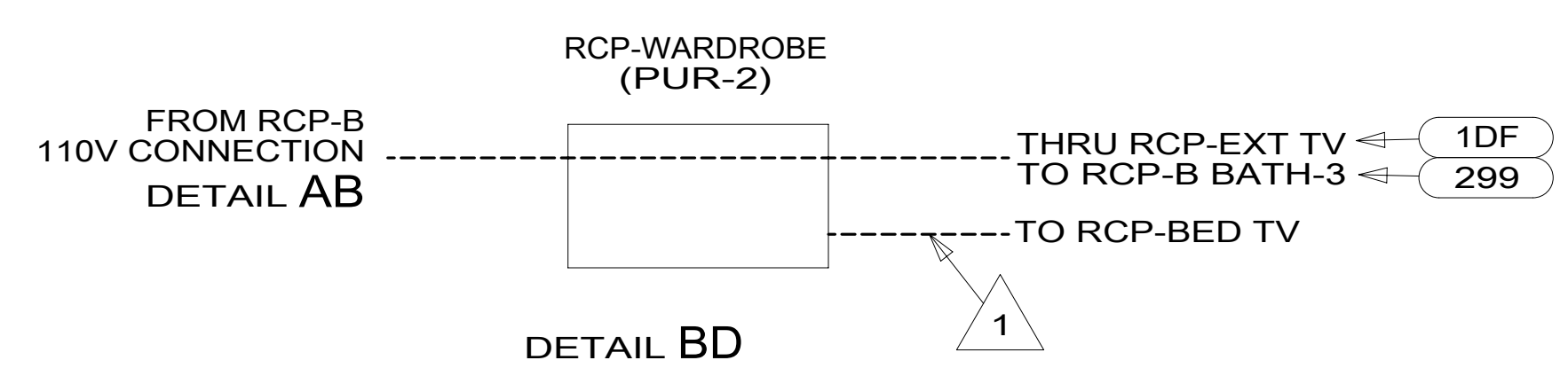
FOR ELECTRICAL CALLOUTS SEE DWG NO. 121339-01-000

8 7 6 5 4 3 2 1

8 7 6 5 4 3 2 1



- 5 LOCATING DIMENSION SEE DETAIL BB.
4. AT MINIMUM ALL WIRES TO BE SUPPORTED AND SECURED PER CODE REQUIREMENTS. USE CLAMP 10495 OR 10497 OR WIRE TIE 8343 OR 108046 AND SCREW G67-XX-XXX OR G56-XX-XXX AS APPROPRIATE FOR INSTALLATION.
- 3 SEE WIRING INSTALLATION TV/DVD FOR ADDITIONAL INFORMATION.
- 2 WIRE ROUTES THRU FLOOR IN THIS AREA.
- 1 WIRE ROUTED IN SIDEWALL



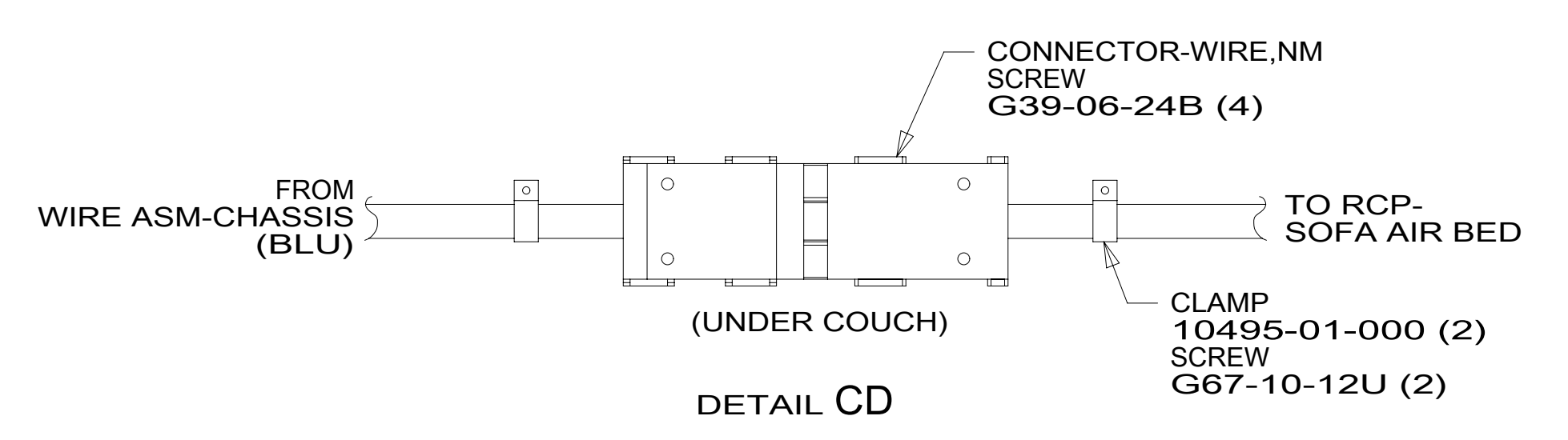
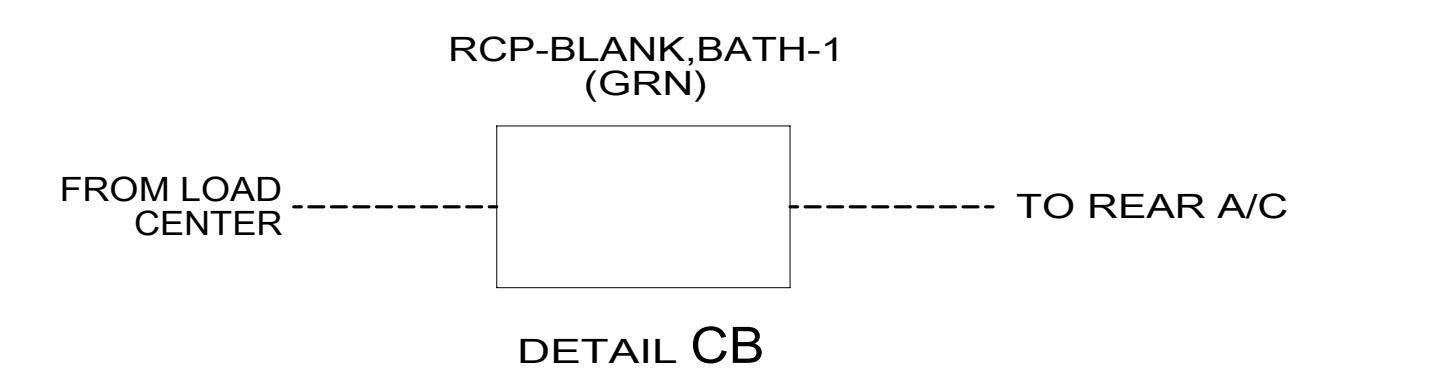
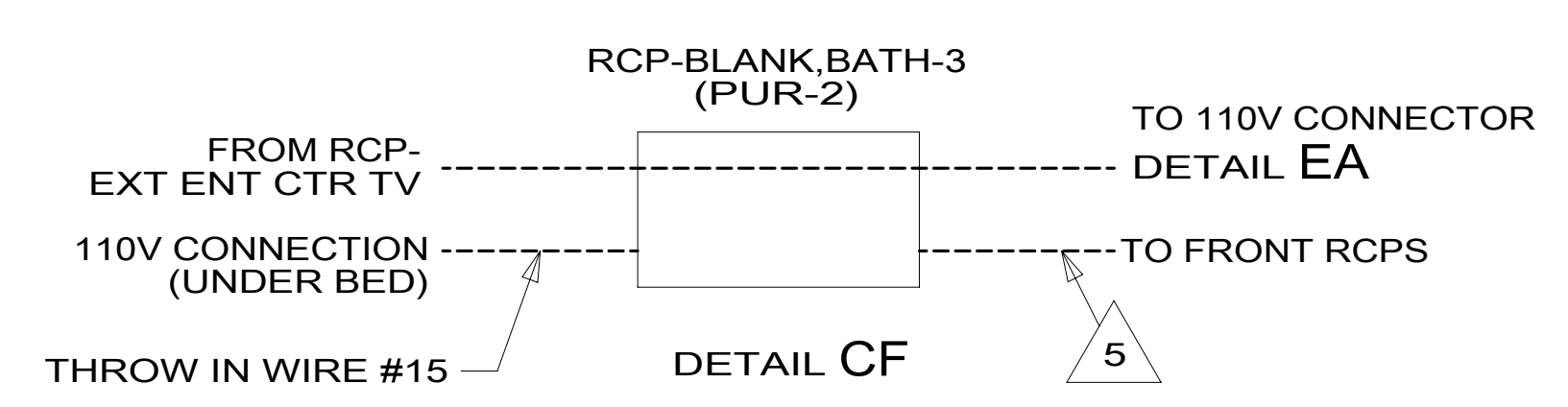
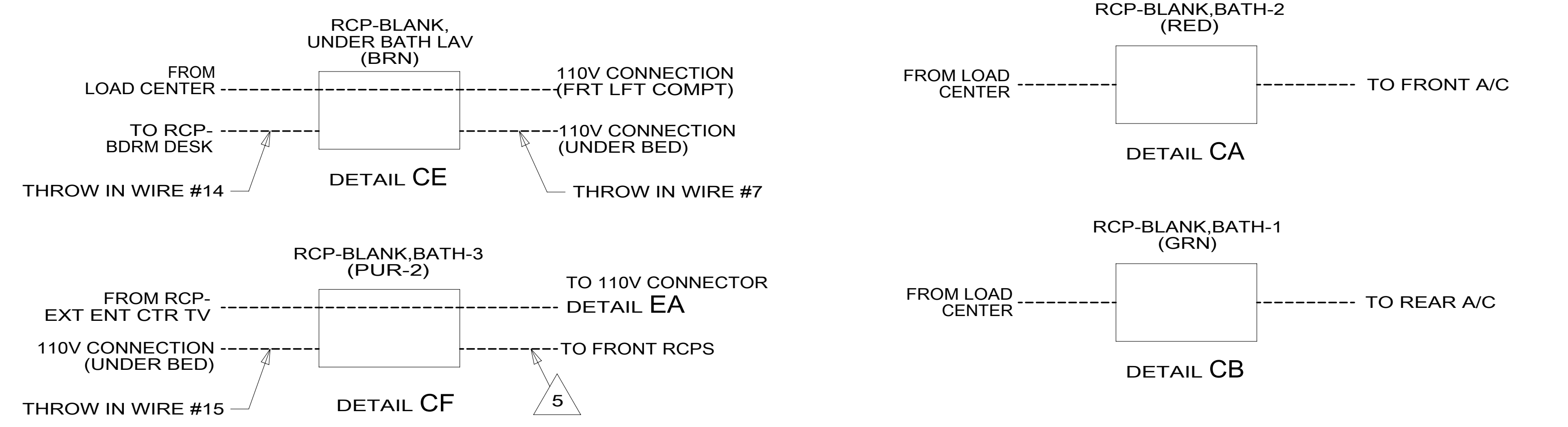
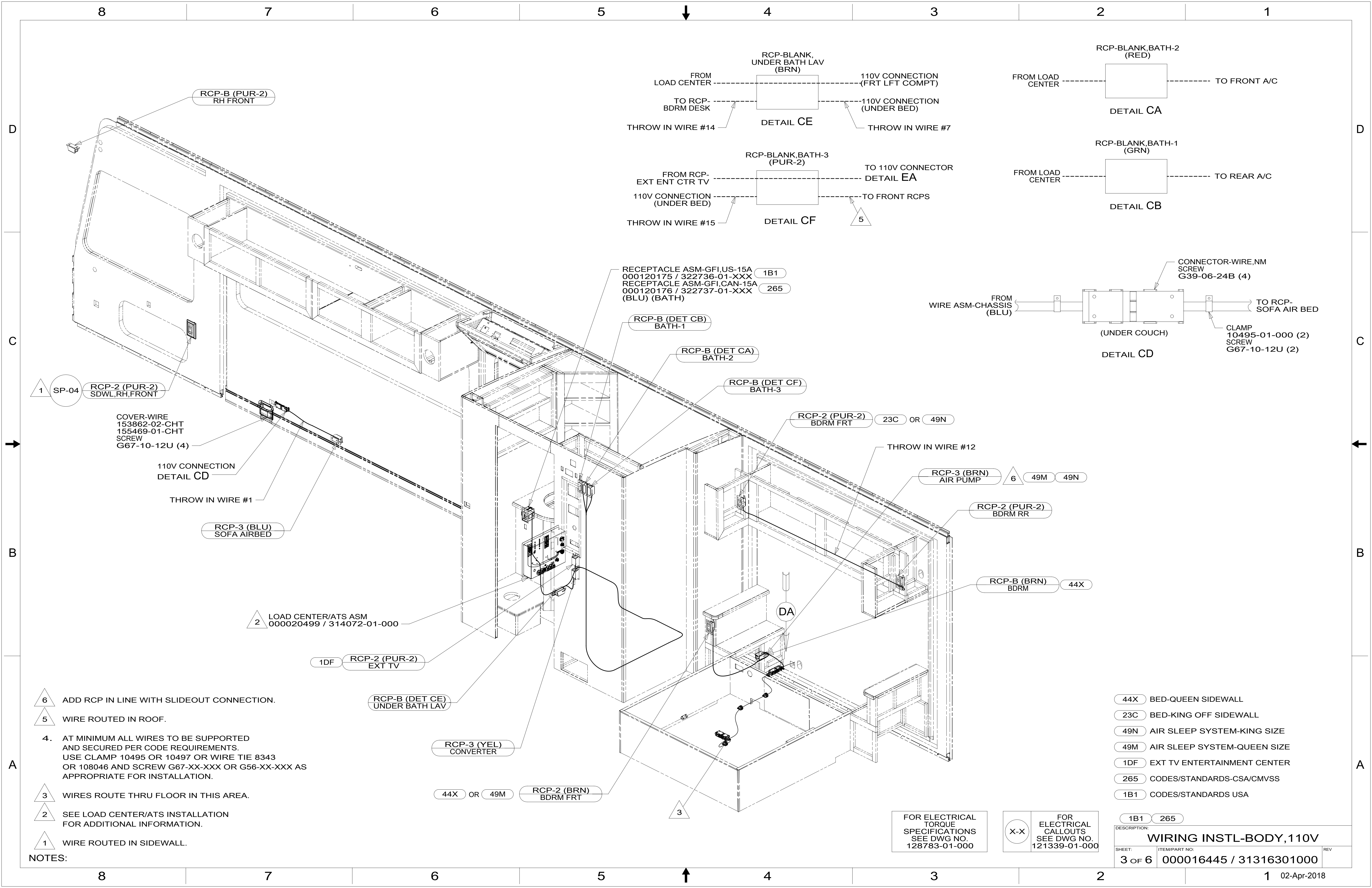
FOR ELECTRICAL TORQUE SPECIFICATIONS SEE DWG NO. 128783-01-000

FOR ELECTRICAL CALLOUTS SEE DWG NO. 121339-01-000

- 299 ENTERTAINMENT CENTER EXT.W/O
- 1DF EXT TV ENTERTAINMENT CENTER
- 265 CODES/STANDARDS-CSA/CMVSS
- 1B1 CODES/STANDARDS USA

DESCRIPTION:	
WIRING INSTL-BODY, 110V	
SHEET:	ITEM/PART NO.:
2 OF 6	000016445 / 31316301000
REV	

8 7 6 5 4 3 2 1 02-Apr-2018



RECEPTACLE ASM-GFI,US-15A 000120175 / 322736-01-XXX
 RECEPTACLE ASM-GFI,CAN-15A 000120176 / 322737-01-XXX (BLU) (BATH)

1B1
 265

1 SP-04 RCP-2 (PUR-2) SDWL,RH,FRONT

COVER-WIRE 153862-02-CHT 155469-01-CHT SCREW G67-10-12U (4)

110V CONNECTION DETAIL CD

THROW IN WIRE #1

RCP-3 (BLU) SOFA AIRBED

2 LOAD CENTER/ATS ASM 000020499 / 314072-01-000

1DF RCP-2 (PUR-2) EXT TV

RCP-B (DET CE) UNDER BATH LAV

RCP-3 (YEL) CONVERTER

44X OR 49M RCP-2 (BRN) BDRM FRT

RCP-B (DET CB) BATH-1

RCP-B (DET CA) BATH-2

RCP-B (DET CF) BATH-3

RCP-2 (PUR-2) BDRM FRT 23C OR 49N

THROW IN WIRE #12

RCP-3 (BRN) AIR PUMP 6 49M 49N

RCP-2 (PUR-2) BDRM RR

RCP-B (BRN) BDRM 44X

6 ADD RCP IN LINE WITH SLIDEOUT CONNECTION.

5 WIRE ROUTED IN ROOF.

4. AT MINIMUM ALL WIRES TO BE SUPPORTED AND SECURED PER CODE REQUIREMENTS. USE CLAMP 10495 OR 10497 OR WIRE TIE 8343 OR 108046 AND SCREW G67-XX-XXX OR G56-XX-XXX AS APPROPRIATE FOR INSTALLATION.

3 WIRES ROUTE THRU FLOOR IN THIS AREA.

2 SEE LOAD CENTER/ATS INSTALLATION FOR ADDITIONAL INFORMATION.

1 WIRE ROUTED IN SIDEWALL.

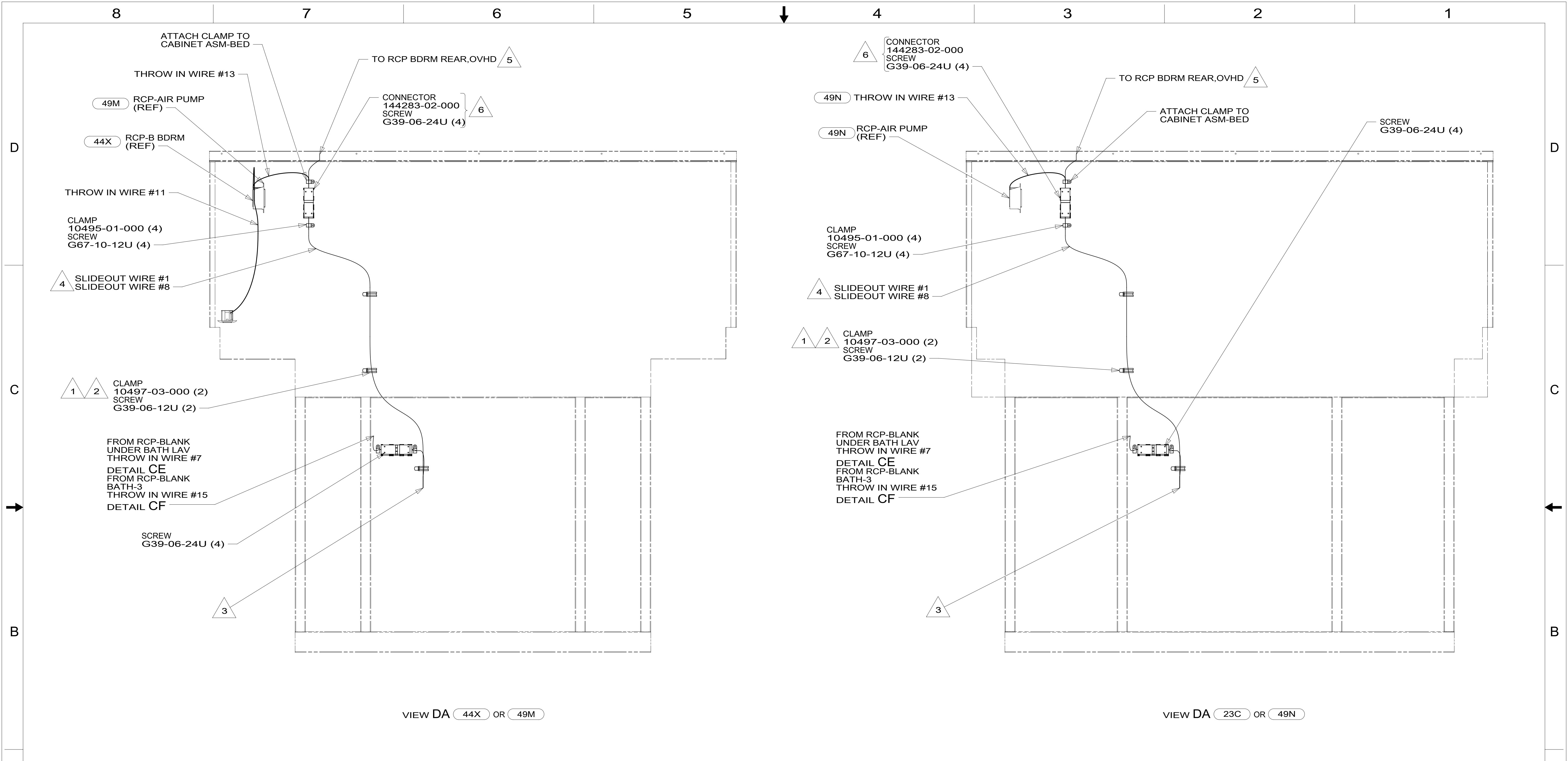
NOTES:

FOR ELECTRICAL TORQUE SPECIFICATIONS SEE DWG NO. 128783-01-000

FOR ELECTRICAL CALLOUTS SEE DWG NO. 121339-01-000

- 44X BED-QUEEN SIDEWALL
- 23C BED-KING OFF SIDEWALL
- 49N AIR SLEEP SYSTEM-KING SIZE
- 49M AIR SLEEP SYSTEM-QUEEN SIZE
- 1DF EXT TV ENTERTAINMENT CENTER
- 265 CODES/STANDARDS-CSA/CMVSS
- 1B1 CODES/STANDARDS USA

DESCRIPTION:	1B1 265	
WIRING INSTL-BODY, 110V		
SHEET:	ITEM/PART NO.:	REV:
3 OF 6	000016445 / 31316301000	



- NOTES:
- 6 ATTACH MOLEX CONNECTOR TO (PUR-2) WIRE FROM SIDEWALL.
 - 5 WIRE ROUTED IN SIDEWALL.
 - 4 SEE LOAD CENTER/ATS ASM FOR ADDITIONAL INFORMATION.
 - 3 MAKE LOOP AS SMALL AS POSSIBLE WHEN SLIDEOUT IS COMPLETELY RETRACTED.
 - 2 RUN 12V WIRE ALONG WITH SLIDEOUT WIRE #3.
 - 1 WIRE MUST BE ROUTED THROUGH CLAMPS AS SHOWN.

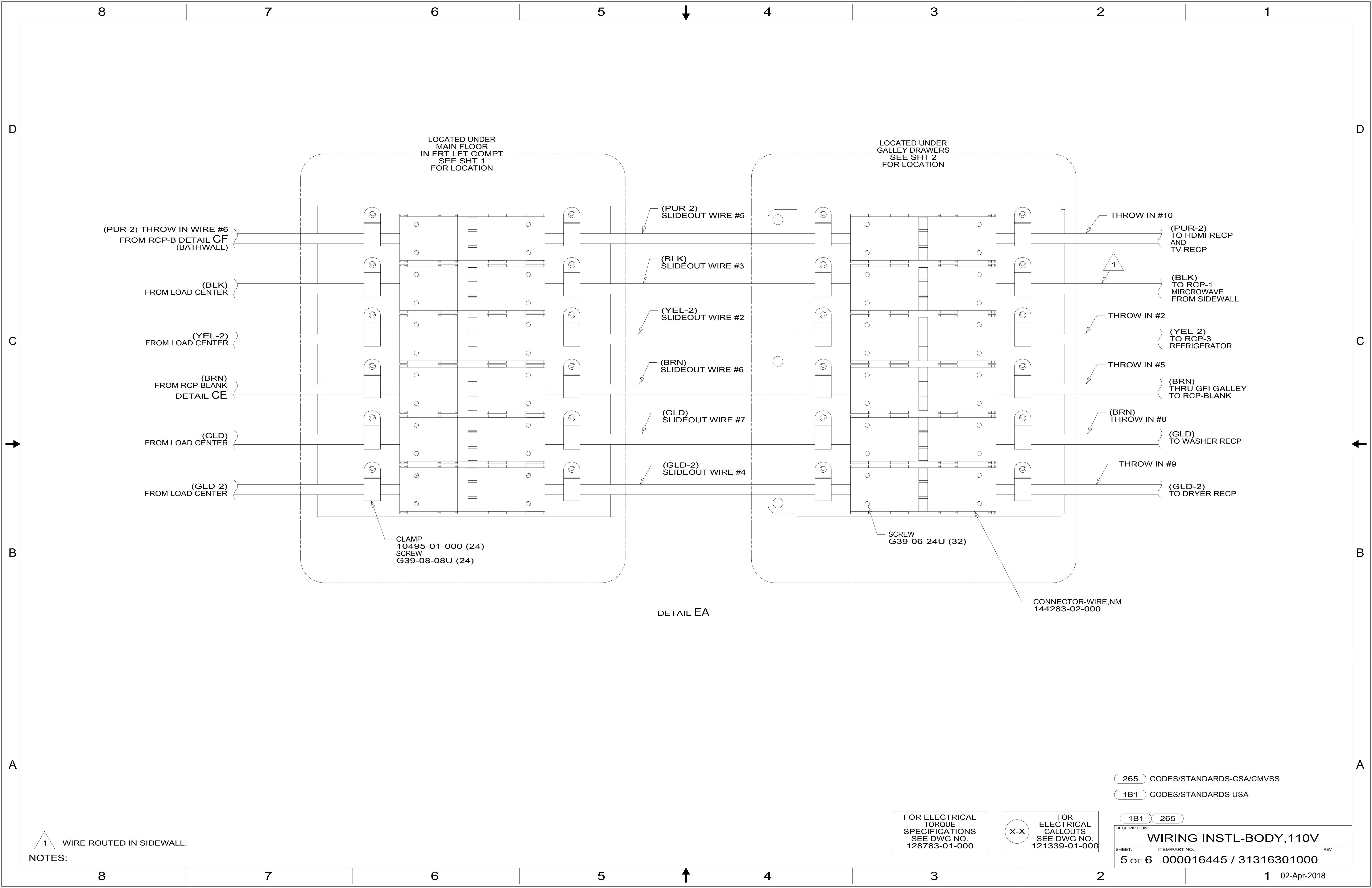
- 44X BED-QUEEN SIDEWALL
- 23C BED-KING OFF SIDEWALL
- 49N AIR SLEEP SYSTEM-KING SIZE
- 49M AIR SLEEP SYSTEM-QUEEN SIZE
- 265 CODES/STANDARDS-CSA/CMVSS
- 1B1 CODES/STANDARDS USA

FOR ELECTRICAL TORQUE SPECIFICATIONS SEE DWG NO. 128783-01-000

X-X

FOR ELECTRICAL CALLOUTS SEE DWG NO. 121339-01-000

DESCRIPTION: WIRING INSTL-BODY,110V		
SHEET: 4 OF 6	ITEM/PART NO: 000016445 / 31316301000	REV
1 02-Apr-2018		



LOCATED UNDER
MAIN FLOOR
IN FRT LFT COMPT
SEE SHT 1
FOR LOCATION

LOCATED UNDER
GALLEY DRAWERS
SEE SHT 2
FOR LOCATION

(PUR-2) THROW IN WIRE #6
FROM RCP-B DETAIL CF
(BATHWALL)

(BLK)
FROM LOAD CENTER

(YEL-2)
FROM LOAD CENTER

(BRN)
FROM RCP BLANK
DETAIL CE

(GLD)
FROM LOAD CENTER

(GLD-2)
FROM LOAD CENTER

(PUR-2)
SLIDEOUT WIRE #5

(BLK)
SLIDEOUT WIRE #3

(YEL-2)
SLIDEOUT WIRE #2

(BRN)
SLIDEOUT WIRE #6

(GLD)
SLIDEOUT WIRE #7

(GLD-2)
SLIDEOUT WIRE #4

THROW IN #10

(PUR-2)
TO HDMI RECP
AND
TV RECP

(BLK)
TO RCP-1
MIRCROWAVE
FROM SIDEWALL

1

THROW IN #2

(YEL-2)
TO RCP-3
REFRIGERATOR

THROW IN #5

(BRN)
THRU GFI GALLEY
TO RCP-BLANK

(BRN)
THROW IN #8

(GLD)
TO WASHER RECP

THROW IN #9

(GLD-2)
TO DRYER RECP

CLAMP
10495-01-000 (24)
SCREW
G39-08-08U (24)

SCREW
G39-06-24U (32)

CONNECTOR-WIRE,NM
144283-02-000

DETAIL EA

1 WIRE ROUTED IN SIDEWALL.

NOTES:

FOR ELECTRICAL
TORQUE
SPECIFICATIONS
SEE DWG NO.
128783-01-000

FOR
ELECTRICAL
CALLOUTS
SEE DWG NO.
121339-01-000

265 CODES/STANDARDS-CSA/CMVSS

1B1 CODES/STANDARDS USA

1B1 265

DESCRIPTION:
WIRING INSTL-BODY, 110V

SHEET: 5 OF 6 ITEM/PART NO: 000016445 / 31316301000 REV

1 02-Apr-2018

