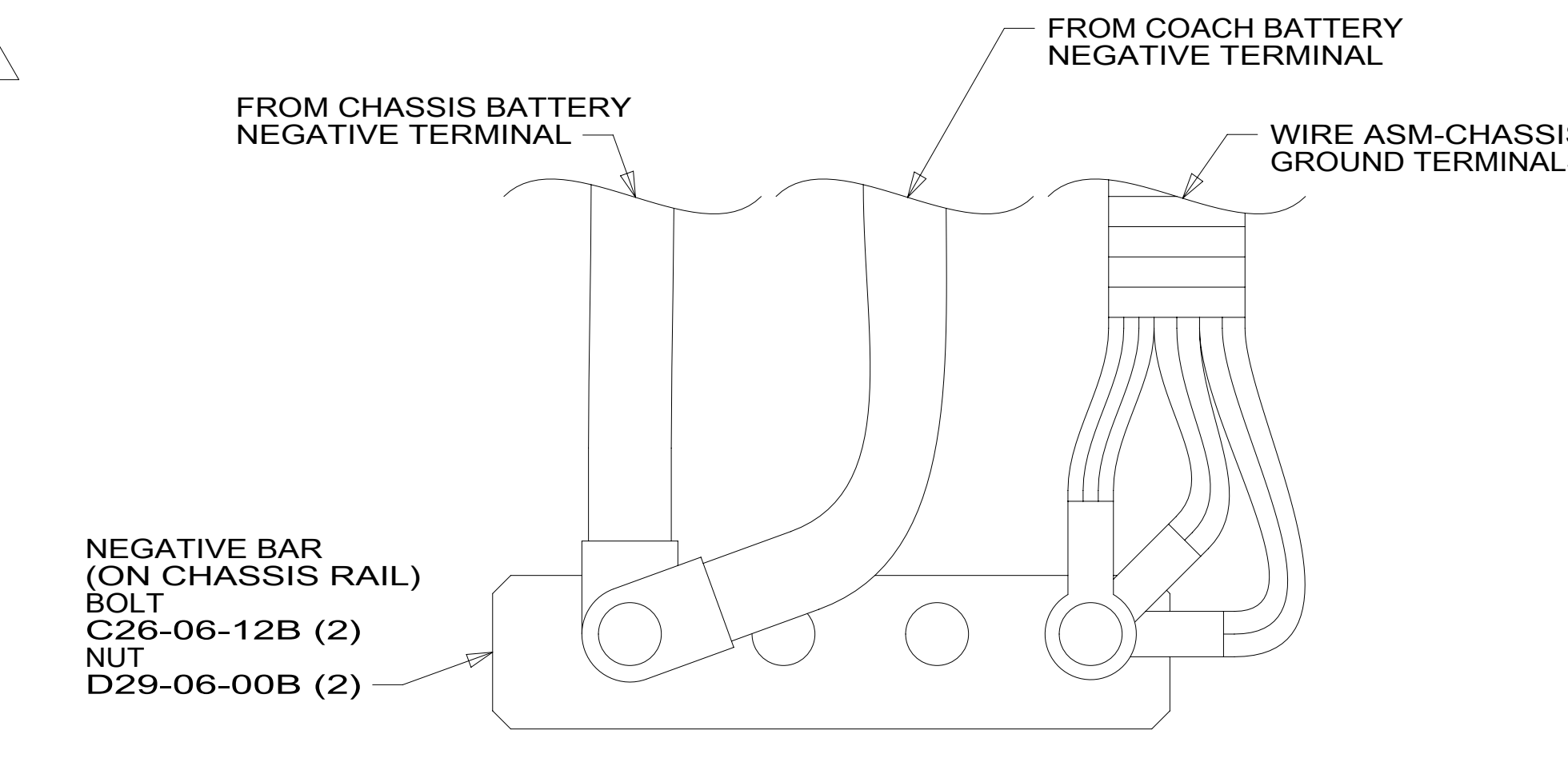


- NOTES:**
- 9 RIGHT REAR SLIDEOUT MOTOR WIRES CROSSES CHASSIS IN THIS AREA.
 - 8 COIL SLIDEOUT WIRES HERE FOR TRANSPORTATION PURPOSES.
 - 7 COVER SHARP EDGES WHERE WIRE CROSSES FRAME RAIL.
 - 6 SEE WIRING INSTL-FRONT END FOR ADDITIONAL INFORMATION.
 - 5 CLAMP 83610-01-000, SCREW G11-10-16B.
 - 4 WIRE TIE 8343-04-000. FASTEN EVERY 600MM MINIMUM.
 - 3. ALL DIMENSIONS ARE FROM DATUM UNLESS OTHERWISE SPECIFIED.
 - 2. SECURE CONDUIT 41953, TAB AS REQUIRED, OVER ALL WIRES IN CONTACT WITH SHARP EDGES.
 - 1 SEE BATTERY INSTALLATION FOR ADDITIONAL INFORMATION.



FOR ELECTRICAL TORQUE SPECIFICATIONS SEE DWG NO. 128783-01-000

FOR ELECTRICAL CALLOUTS SEE DWG NO. 121339-01-000

- 401 INVERTER-DC/AC, 1000 WATT
- 265 CODES/STANDARDS-CSA/CMVSS
- 1B1 CODES/STANDARDS USA

WINNEBAGO
COPYRIGHT 2016 WINNEBAGO INDUSTRIES, INC.

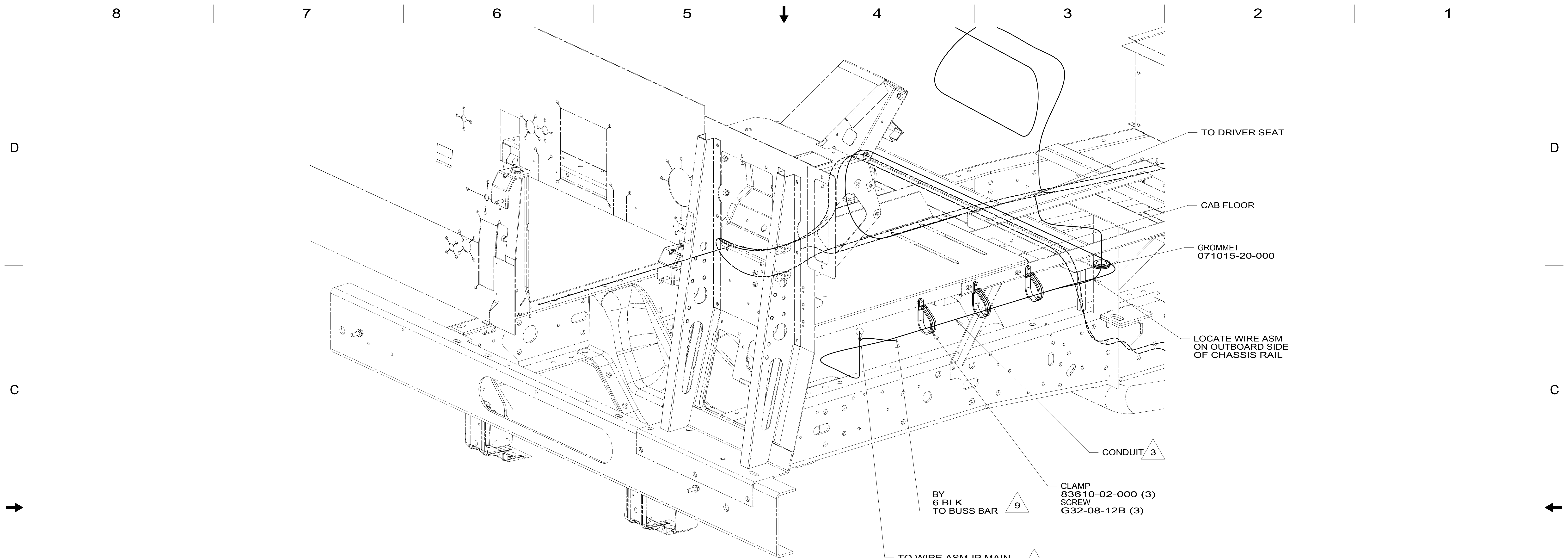
DSNR:	ALL DIMENSIONS ARE IN MILLIMETERS
DFFR:	MATERIAL:
UNSPECIFIED TOLERANCES:	WEIGHT: (LBS)
WHOLE DIM (X) : 3	FIRST USED: 17 D33C
ONE-PLACE (X.X) : 1.5	
TWO-PLACE (X.XX) : 0.50	
ANGLE : 1°	

REFER TO ES0018 FOR FASTENER TIGHTENING GUIDELINES

DESCRIPTION: WIRING INSTL-CHASSIS

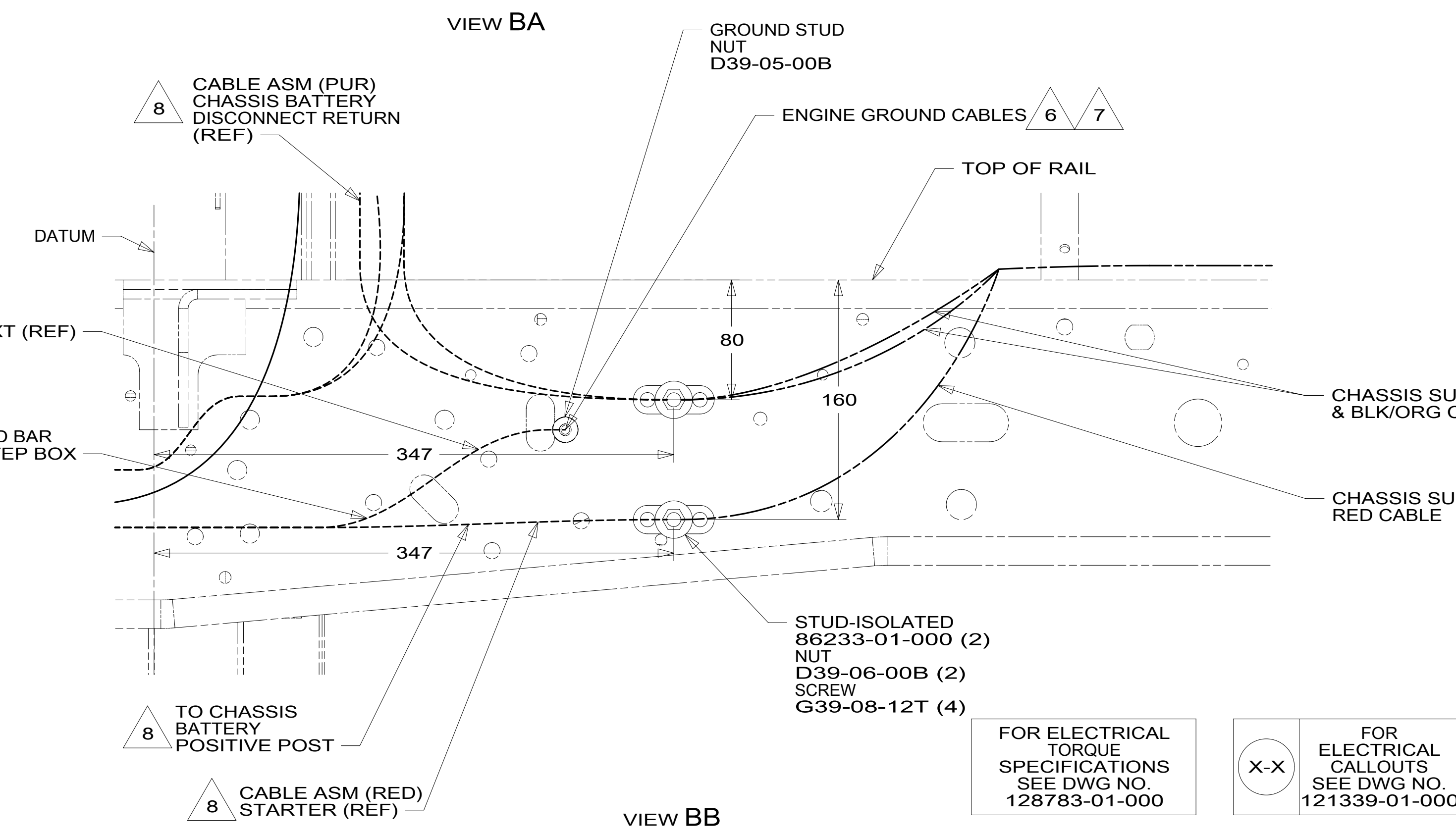
SHEET: 1 OF 3 ITEM/PART NO.: 000016435 / 31316101000 REF: 1

20-Jan-2017



- 9 SEE WIRING INSTL-FRONT END FOR ADDITIONAL INFORMATION.
 - 8 SEE BATTERY INSTL FOR ADDITIONAL INFORMATION.
 - 7 SUPPLIED WITH CHASSIS
 - 6 CUT CHASSIS SUPPLIED BATTERY GROUND CABLE 700MM FROM BATTERY TERMINAL AND ADD TERMINAL 8348-01-000 TO CUT END.
 - 5 CUT CHASSIS SUPPLIED POSITIVE BATTERY CABLE 150MM FROM BATTERY TERMINAL END, DISCARD TERMINAL END AND SEPARATE WIRES. ADD TERMINAL 8348-01-000 AND HEAT SHRINK 176567-04-000 TO RED CABLE (CHASSIS STARTER) AND COMBINE YELLOW (CHASSIS POWER DISTRIBUTION) AND BLACK/ORANGE (CHASSIS ALTERNATOR) WIRES TOGETHER AND ADD TERMINAL 8348-01-000 AND HEAT SHRINK 176567-02-000. COIL EXCESS CABLE ALONG FRAME RAIL JUST BEHIND RADIATOR AND TIE UP WITH TIE-WIRE 8343-04-000.
 - 4 ROUTE WIRE THRU HOLE IN CAB FLOOR.
 - 3 COVER WITH CONDUIT 41953-10-000 AND 41953-11-000 AS REQUIRED.
2. CONNECT CABLES TO COACH SIDE OF BATTERY DISCONNECT WHEN BATTERY DISCONNECT IS USED.
 1. CUT OFF EXCESS END OF WIRE TIE.

NOTES:



265	CODES/STANDARDS-CSA/CMVSS
1B1	CODES/STANDARDS USA
1B1	265
DESCRIPTION:	
WIRING INSTL-CHASSIS	
SHEET:	ITEM/PART NO:
2 OF 3	000016435 / 31316101000
REV	

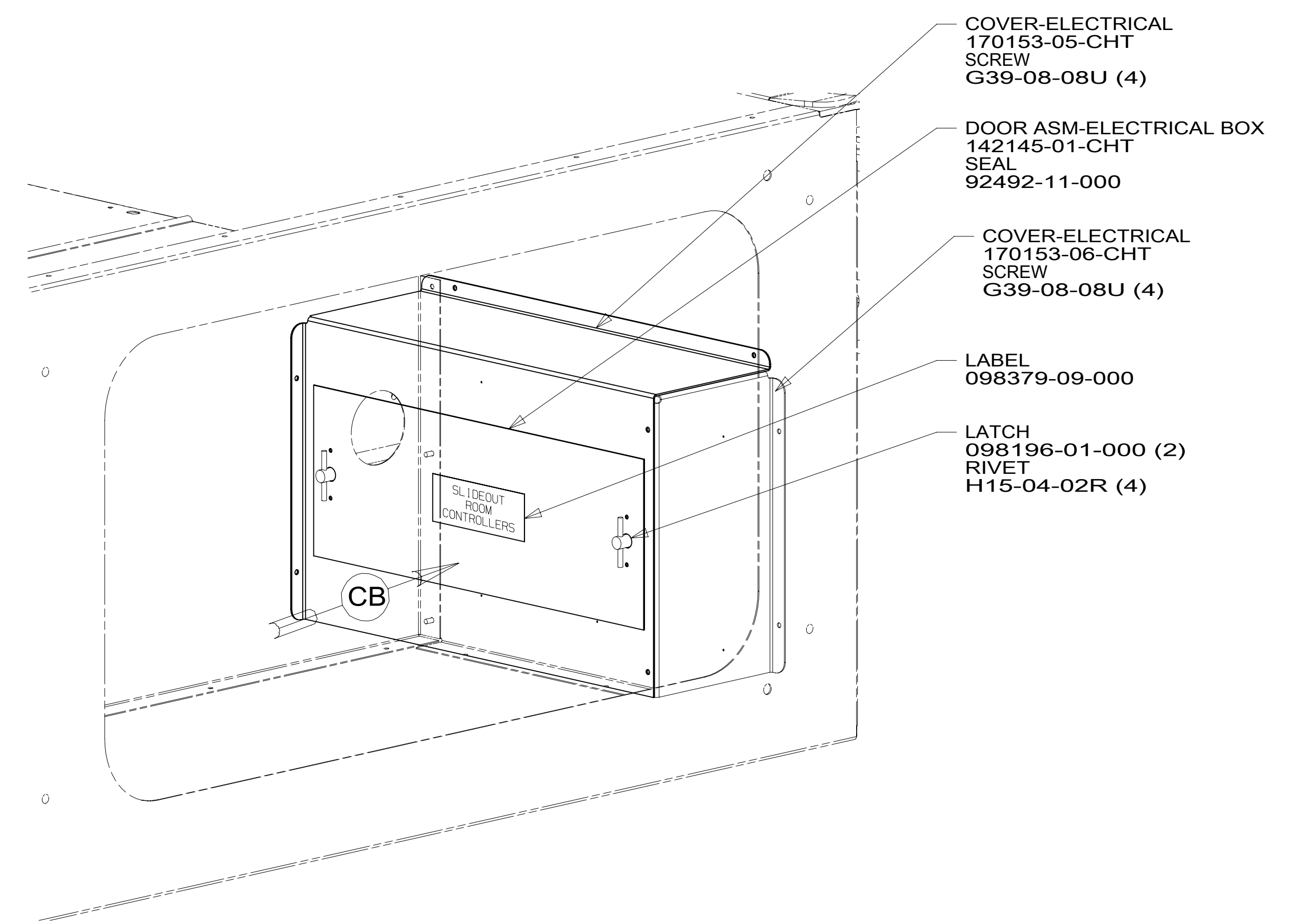
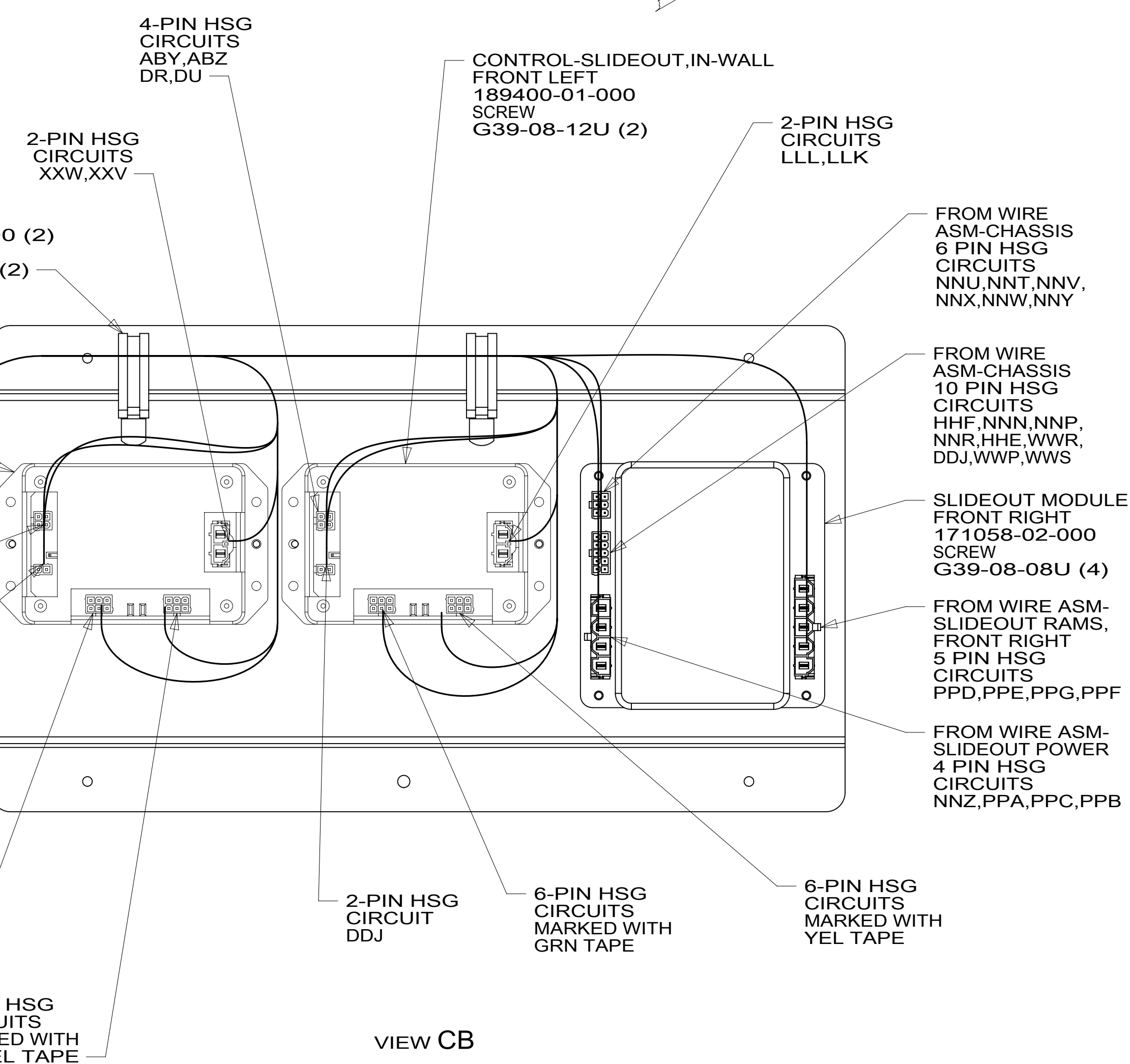
FOR ELECTRICAL TORQUE SPECIFICATIONS SEE DWG NO. 128783-01-000

FOR ELECTRICAL CALLOUTS SEE DWG NO. 121339-01-000

FRONT RIGHT FRONT RAM
2 PIN HOUSING
FROM WIRE ASM-SLIDEOUT RAM
TO RAM MOTOR
CIRCUITS PPD,PPE
3 PIN HOUSING
FROM WIRE ASM-CHASSIS
TO SLIDEOUT RAM ENCODER.
CIRCUITS NNT,NNV,NNU

WIRE ASM-SLIDEOUT RAMS,FRONT RIGHT
149553-15-000

FRONT RIGHT REAR RAM
2 PIN HOUSING
FROM WIRE ASM-SLIDEOUT RAM
TO RAM MOTOR
CIRCUITS PPF,PPG
3 PIN HOUSING
FROM WIRE ASM-CHASSIS
TO SLIDEOUT RAM ENCODER.
CIRCUITS NNW,NNY,NNX.



1 SEE CHASSIS ELECTRICAL BOX ASM FOR ADDITIONAL INFORMATION.

FOR ELECTRICAL TORQUE SPECIFICATIONS SEE DWG NO. 128783-01-000

FOR ELECTRICAL CALLOUTS SEE DWG NO. 121339-01-000

- 265 CODES/STANDARDS-CSA/CMVSS
- 1B1 CODES/STANDARDS USA

DESCRIPTION: WIRING INSTL-CHASSIS	
SHEET: 3 OF 3	ITEM/PART NO.: 000016435 / 31316101000
REV	