

TV-50, FLAT PANEL ELED, HDTV  
194671-01-000  
SCREW  
(SUPPLIED WITH TV)  
NUT  
D24-10-00U (8)  
PLATE-MOUNTING ASM, TV  
000131001 / 325637-01-CHT  
PLATE-MOUNTING, TV  
000178332 / 302680-01-CHT  
NUT  
D39-06-00U (4)  
CONNECTOR-HDMI, 90 UP  
179395-02-000 (2)

SPEAKER-SOUNDBAR, WIRELESS SUB, SAMSUNG  
000170008 / 330888-01-000  
FASTENER-DUAL LOCK  
085774-01-000 (50 MM)(2)  
085774-02-000 (50 MM)(2)

PLATE-WALL  
149557-10-CHT  
SCREW  
G67-10-08U (2)

SATELLITE  
RECEIVER  
(REF)

DVD PLAYER  
000183221 / 302822-01-000  
FASTENER-DUAL LOCK  
85774-01-000 (200 MM)  
85774-02-000 (200 MM)

SUBWOOFER  
(REF)

SPLITTER-HDMI, 1X2  
178632-01-000  
FASTENER-DUAL LOCK  
85774-01-000 (100 MM)  
85774-02-000 (100 MM)

45B & 783  
BRACKET-ANTENNA, SATELLITE  
000023112 / 314657-01-CHT  
SCREW  
000G39-08-12U (2)

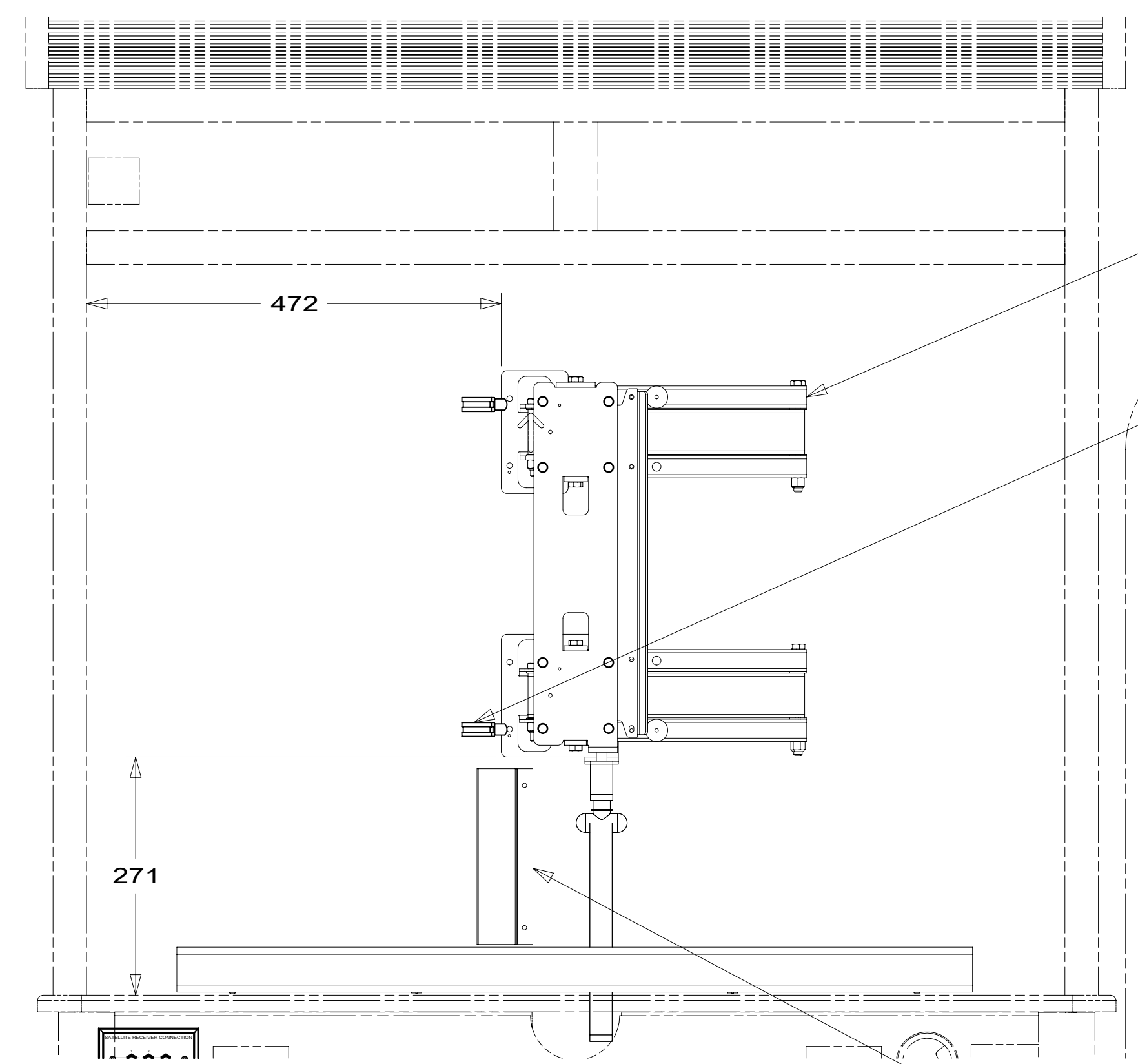
3 1 783  
CONTROL-INTERIOR  
183415-05-000  
FASTENER-DUAL LOCK  
85774-01-000 (200 MM)  
85774-02-000 (200 MM)

BOLT-HOOD  
058786-04-000 (2)  
NUT  
D39-05-00U (2)

RCP-2 (PUR)  
OVHD FRONT  
PLATE-WALL,  
POWER SUPPLY  
179004-02-CHT

PANEL ASM  
155127-35-XXX  
155127-36-XXX  
000007511 / 310614-01-XXX  
783 45D  
78C 45D  
45B

GROMMET-EDGE LINER  
114208-05-000



VIEW AA  
(TV NOT SHOWN)

COVER-WIRE  
176981-03-CHT  
SCREW  
G39-08-12U (2)

- 45D LOFT BED - WITHOUT
- 45B LOFT BED
- 78C SATELLITE SYSTEM READY
- 783 SATELLITE HD TV SYSTEM AUTOC
- 265 CODES/STANDARDS-CSA/CMVSS
- 1B1 CODES/STANDARDS USA

1B1 265

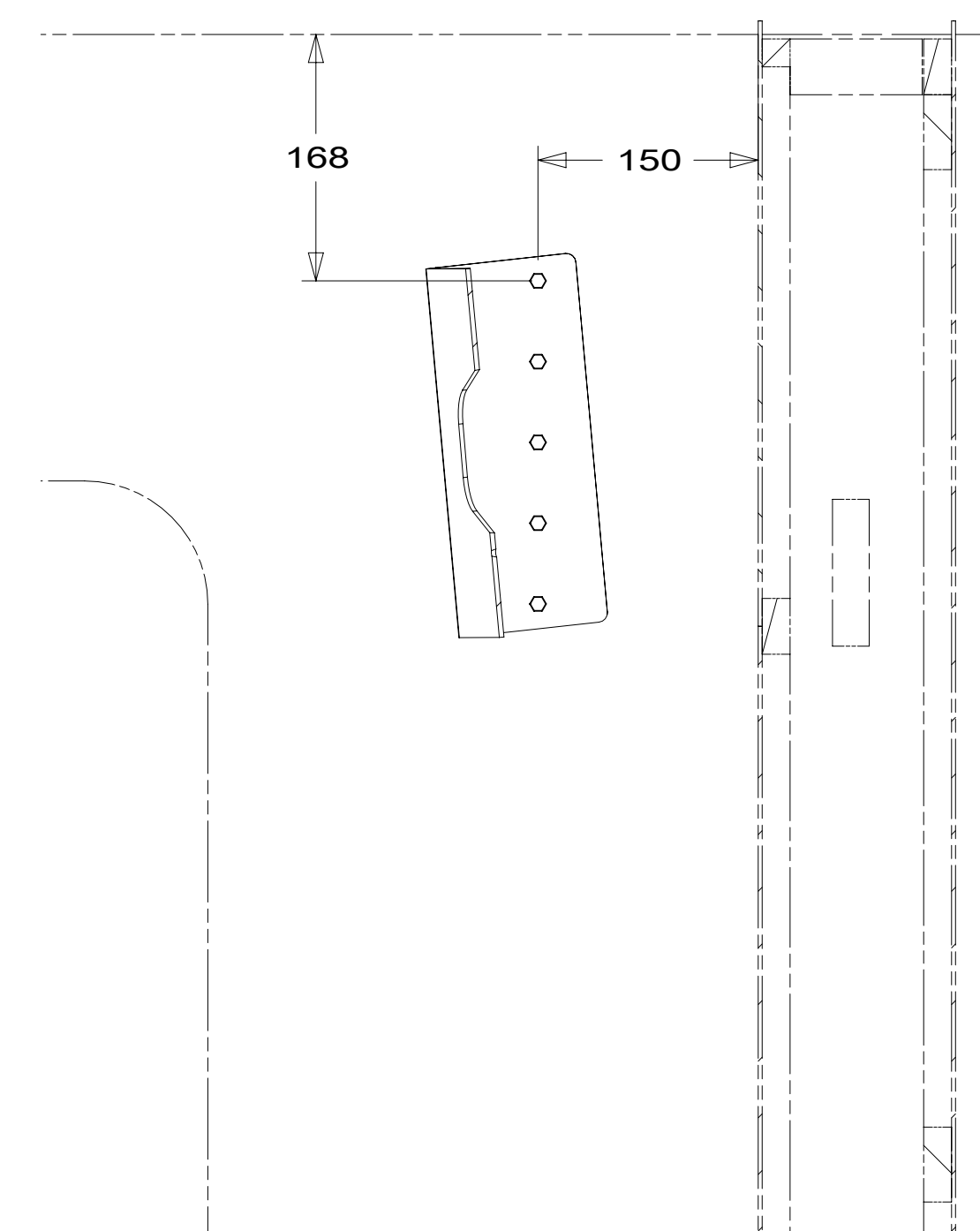
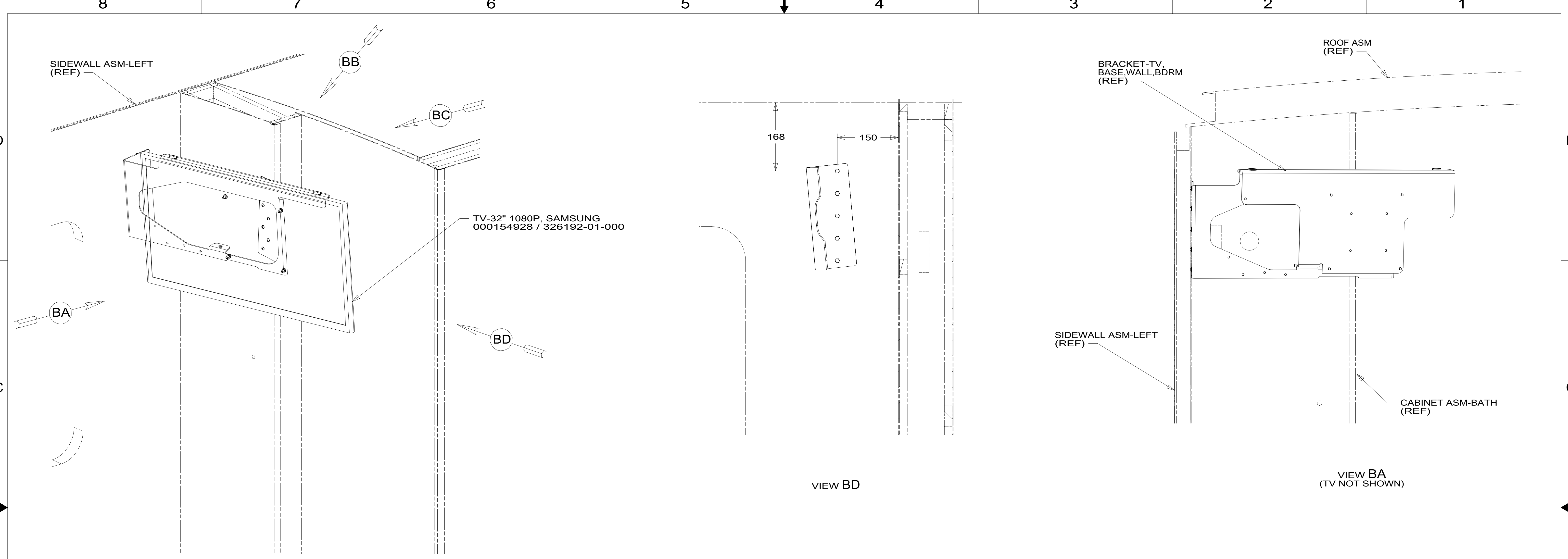


DSNR:		ALL DIMENSIONS ARE IN MILLIMETERS	
DIFFR:		MATERIAL:	
UNSPECIFIED TOLERANCES:			
WHOLE DIM (X)	: 3		
ONE-PLACE (X.X)	: 1.5		
TWO-PLACE (X.XX)	: 0.50		
ANGLE	: 1°		
REFER TO ES0018 FOR FASTENER TIGHTENING GUIDELINES		WEIGHT: (LBS)	FIRST USED:
			17 L34T
DESCRIPTION: <b>WIRING INSTL-TV/DVD</b>			

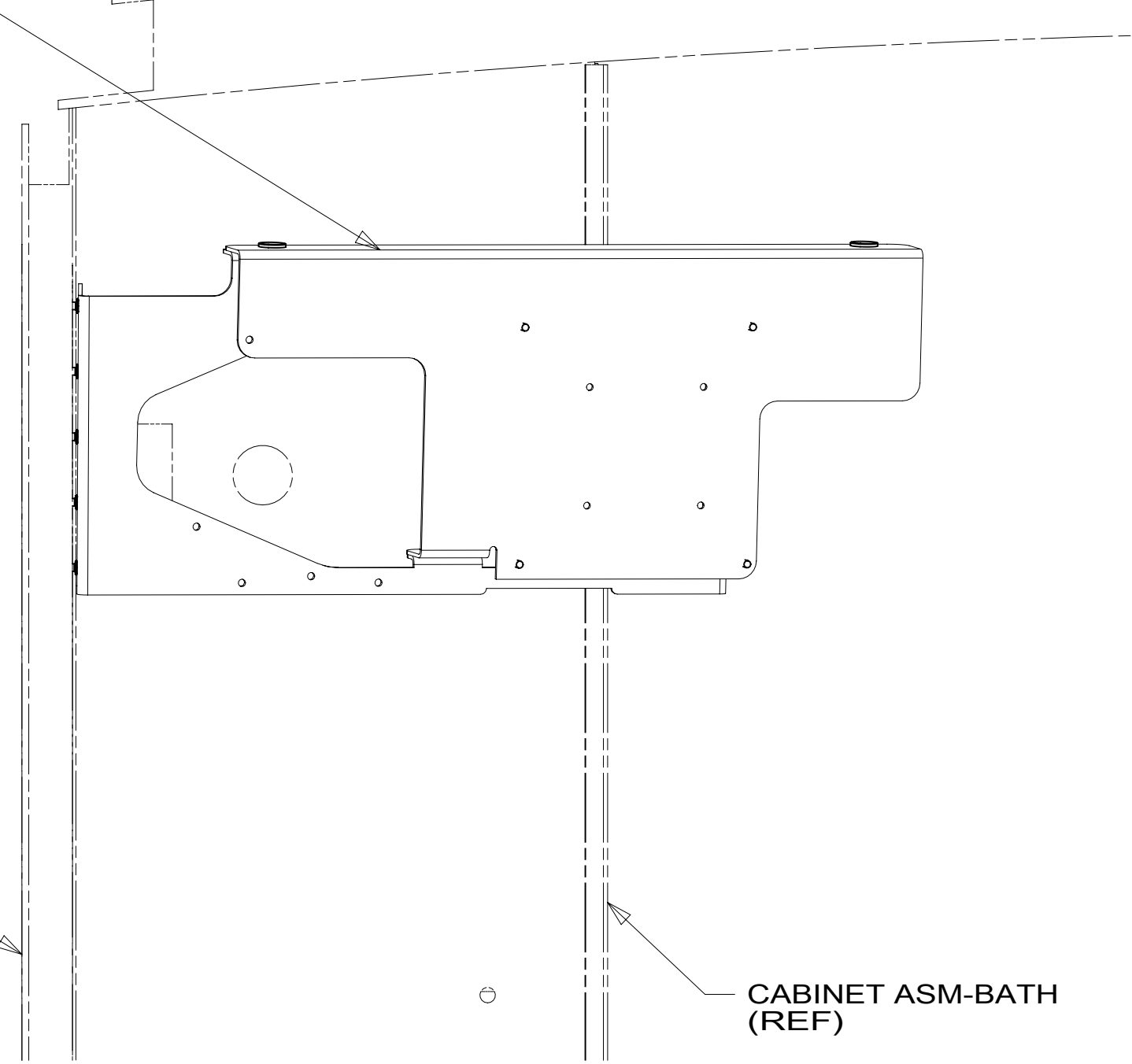
FOR ELECTRICAL TORQUE SPECIFICATIONS SEE DWG NO. 128783-01-000

FOR ELECTRICAL CALLOUTS SEE DWG NO. 121339-01-000

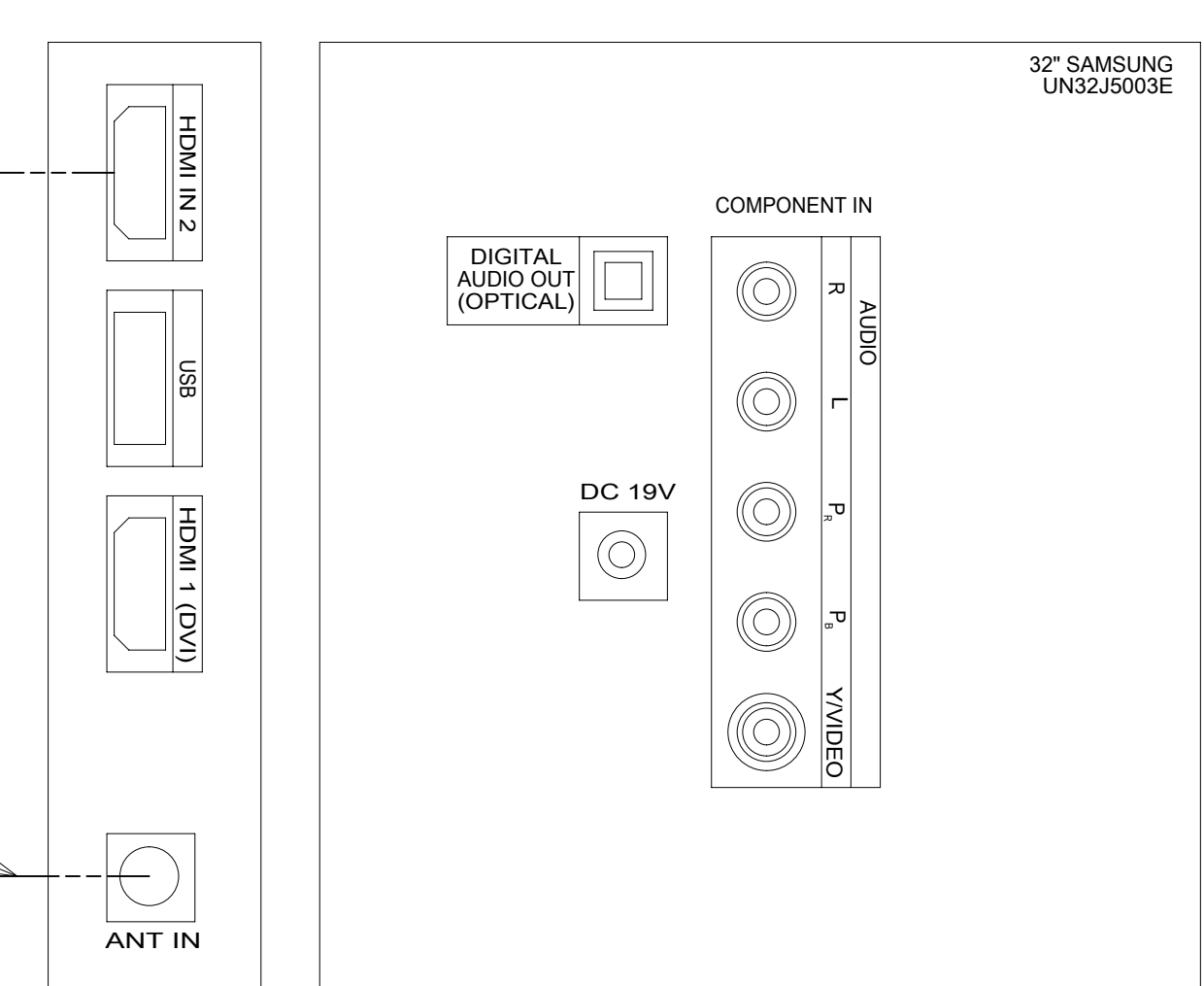
- NOTES:
- 3 CONTROL IS MOUNTED IN REAR OF CABINET WITH 45B
  - 2 USE TIE-WIRE 8343-01-000 TO SUPPORT WIRE HERE.
  - 1 INTERIOR CONTROL CONNECTS TO SATELLITE DATA CABLE. SEE ROOF ASM FOR ADDITIONAL INFORMATION.



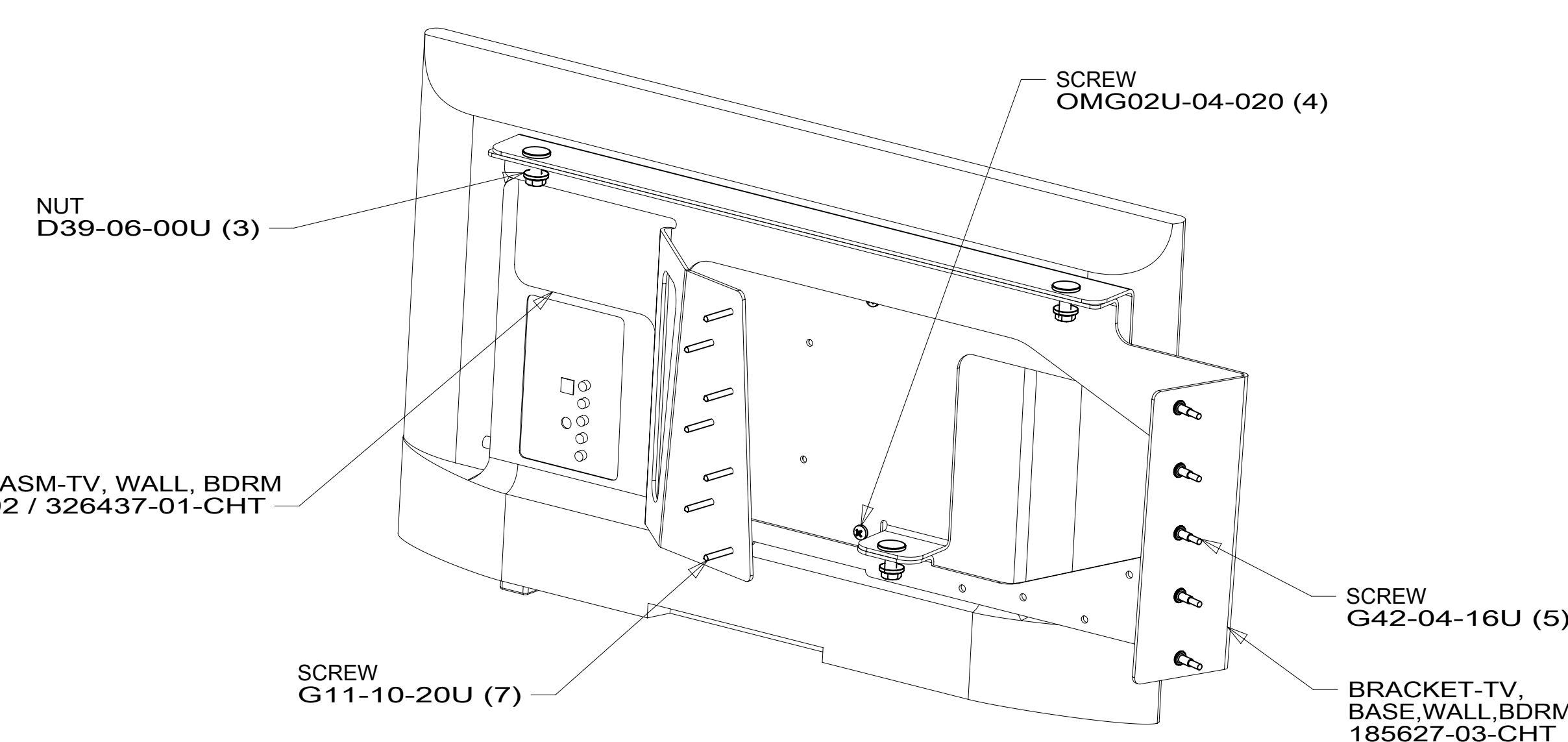
VIEW BD



VIEW BA  
(TV NOT SHOWN)



VIEW BC



VIEW BB

FROM WIRE ASM-ROOF

CABLE ASM-COAX (GRN)

FROM WIRE ASM-ROOF

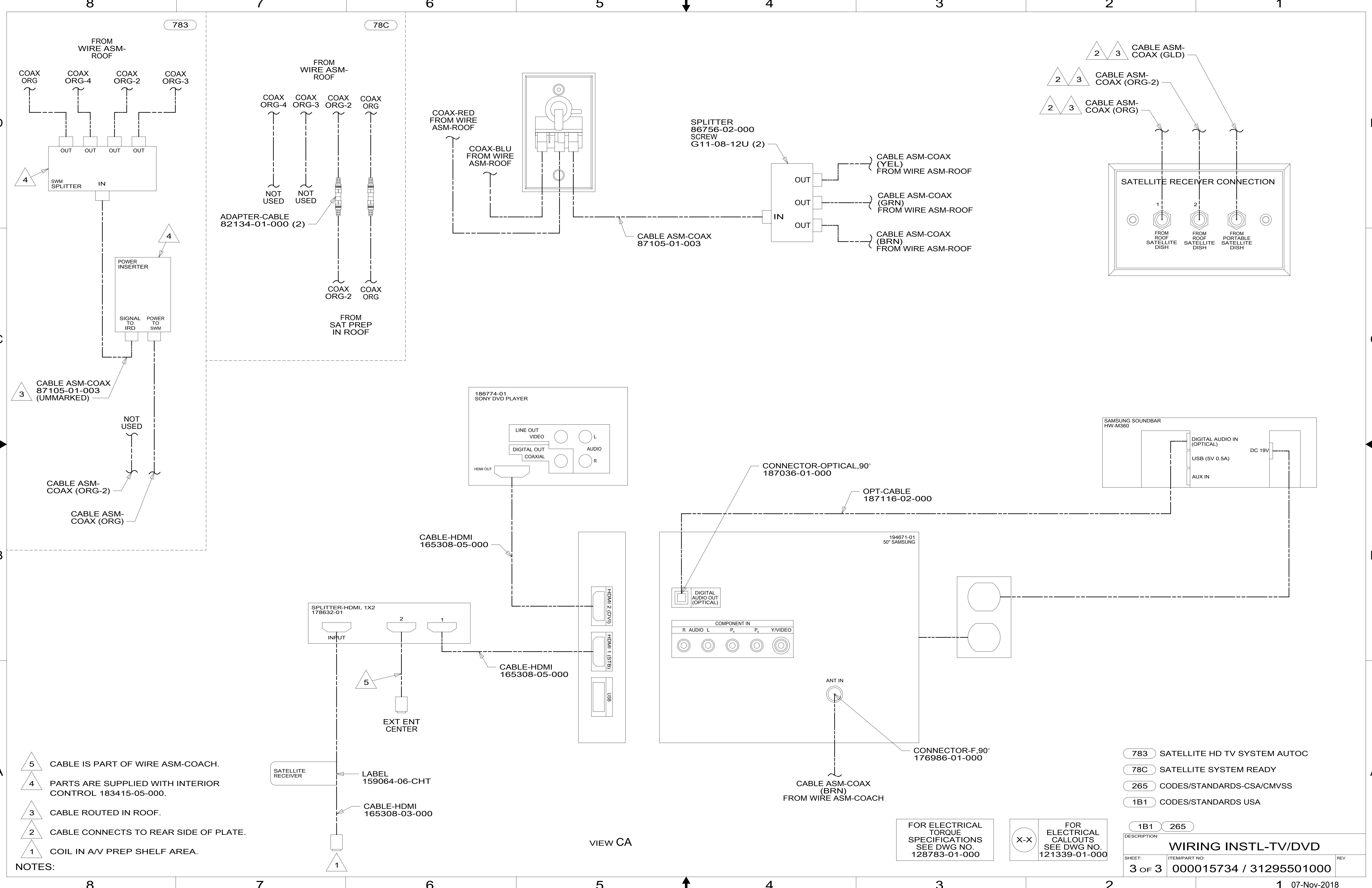
265 CODES/STANDARDS-CSA/CMVSS

1B1 CODES/STANDARDS USA

FOR ELECTRICAL TORQUE SPECIFICATIONS SEE DWG NO. 128783-01-000

FOR ELECTRICAL CALLOUTS SEE DWG NO. 121339-01-000

DESCRIPTION:		1B1 265	
<b>WIRING INSTL-TV/DVD</b>			
SHEET:	ITEM/PART NO.:	REV	
2 OF 3	000015734 / 31295501000		



- NOTES:
- 5 CABLE IS PART OF WIRE ASM-COACH.
  - 4 PARTS ARE SUPPLIED WITH INTERIOR CONTROL 183415-05-000.
  - 3 CABLE ROUTED IN ROOF.
  - 2 CABLE CONNECTS TO REAR SIDE OF PLATE.
  - 1 COIL IN AV PREP SHELF AREA.

- 783 SATELLITE HD TV SYSTEM AUTOC
- 78C SATELLITE SYSTEM READY
- 265 CODES/STANDARDS-CSA/CMVSS
- 1B1 CODES/STANDARDS USA

FOR ELECTRICAL TORQUE SPECIFICATIONS SEE DWG NO. 128783-01-000

FOR ELECTRICAL CALLOUTS SEE DWG NO. 121339-01-000

DESCRIPTION:		<b>WIRING INSTL-TV/DVD</b>	
SHEET:	ITEM/PART NO.:	REV	
3 OF 3	000015734 / 31295501000		

VIEW CA

D  
C  
B  
A

D  
C  
B  
A

8 7 6 5 4 3 2 1

8 7 6 5 4 3 2 1