

8

7

6

5

4

3

2

1



D

D

C

C

B

B

A

A

		ITEM
CABLE ASM (YEL) FROM COACH BATTERY FUSE TO COACH SIDE OF AUX START SOLENOID	000284737_03700 / 357069-01-037	1
CABLE ASM (ORG) FROM COACH BATTERY TO INVERTER FUSE	000284735_00300 / 357068-01-003	2
CABLE ASM (ORG) FROM INVERTER FUSE TO INVERTER DISCONNECT	000284735_01200 / 357068-01-012	3
CABLE ASM (ORG) FROM INVERTER DISCONNECT TO INVERTER POSITIVE TERMINAL	000284735_00500 / 357068-01-005	4
CABLE ASM (BLK) FROM BATTERY TO INVERTER NEGATIVE TERMINAL	000284715_01800 / 357067-01-018	5
CABLE ASM (BLK) FROM COACH BATTERY TO FRAME RAIL GROUND	000284714_03000 / 357066-01-030	6
CABLE ASM (BLU) FROM CHASSIS BATTERY DISCONNECT TO LEVELING SYSTEM PUMP	141416-26-084	7
CABLE ASM (BLK) FROM LEVELING SYSTEM TO FRAME RAIL GROUND	133567-11-009	8
CABLE ASM (GRN) FROM COACH BAT DISC RELAY FUSE TO PASS THRU STUD IN FRONT LEFT COMPT	000288411_10700 / 357507-01-107	9
CABLE ASM (GRN) FROM PASS THRU STUD IN FRONT LEFT COMPT TO GENERATOR	000288411_02400 / 357507-01-024	10
CABLE ASM (BLK) FROM GENERATOR TO FRAME RAIL GROUND BOLT	000284714_01300 / 357066-01-013	11
CABLE ASM (YEL) JUMPER BETWEEN POSITIVE POSTS ON COACH BATTERY	000284708_00200 / 357062-01-002 (3)	12
CABLE ASM (BLK) JUMPER BETWEEN NEGATIVE POSTS ON COACH BATTERY	000284631_00200 / 357056-01-002 (3)	13
CABLE ASM-TEMPERATURE,BATTERY	175385-03-000	14
CABLE ASM (RED) FROM CHASSIS BATTERY FUSE TO CHASSIS SIDE OF AUX START SOLENOID	000284748_00900 / 357077-01-009	15
CABLE ASM (RED) FROM CHASSIS BATTERY TO CHASSIS BATTERY FUSE	000284748_00500 / 357077-01-005	16
CABLE ASM (YEL) FROM COACH BATTERY TO COACH BATTERY FUSE	000284737_00300 / 357069-01-003	17
CABLE ASM (RED) JUMPER BETWEEN POSITIVE POSTS IN LEFT FRONT COMPT	000284709_00200 / 357063-01-002	18

265 CODES/STANDARDS-CSA/CMVSS

1B1 CODES/STANDARDS USA

1B1 265



COPYRIGHT 2024 WINNEBAGO INDUSTRIES, INC.

	INDICATES A CRITICAL CHARACTERISTIC. ENSURE PROPER PROCEDURES ARE FOLLOWED.
	INDICATES A SIGNIFICANT CHARACTERISTIC. ENSURE PROPER PROCEDURES ARE FOLLOWED.
	INDICATES A KEY CHARACTERISTIC. ENSURE PROPER PROCEDURES ARE FOLLOWED.

FOR ELECTRICAL TORQUE SPECIFICATIONS SEE DWG NO. 128783-01-000

FOR ELECTRICAL CALLOUTS SEE DWG 000228177 344479-01-000

DSNR:		ALL DIMENSIONS ARE IN MILLIMETERS	
DFFR:			
UNSPECIFIED TOLERANCES:		MATERIAL:	
WHOLE DIM (X)	: 3		
ONE-PLACE (X.X)	: 1.5		
TWO-PLACE (X.XX)	: 0.50		
ANGLE	: 1°		
REFER TO ES0018 FOR FASTENER TIGHTENING GUIDELINES	WEIGHT: (LBS)	FIRST USED:	
		17 L34T	
DESCRIPTION:			
BATTERY INSTL			
SHEET:	ITEM/PART NO:	REV	
1 OF 5	000015726 / 31295301000		
REF:		1 16-Feb-2024	

8

7

6

5

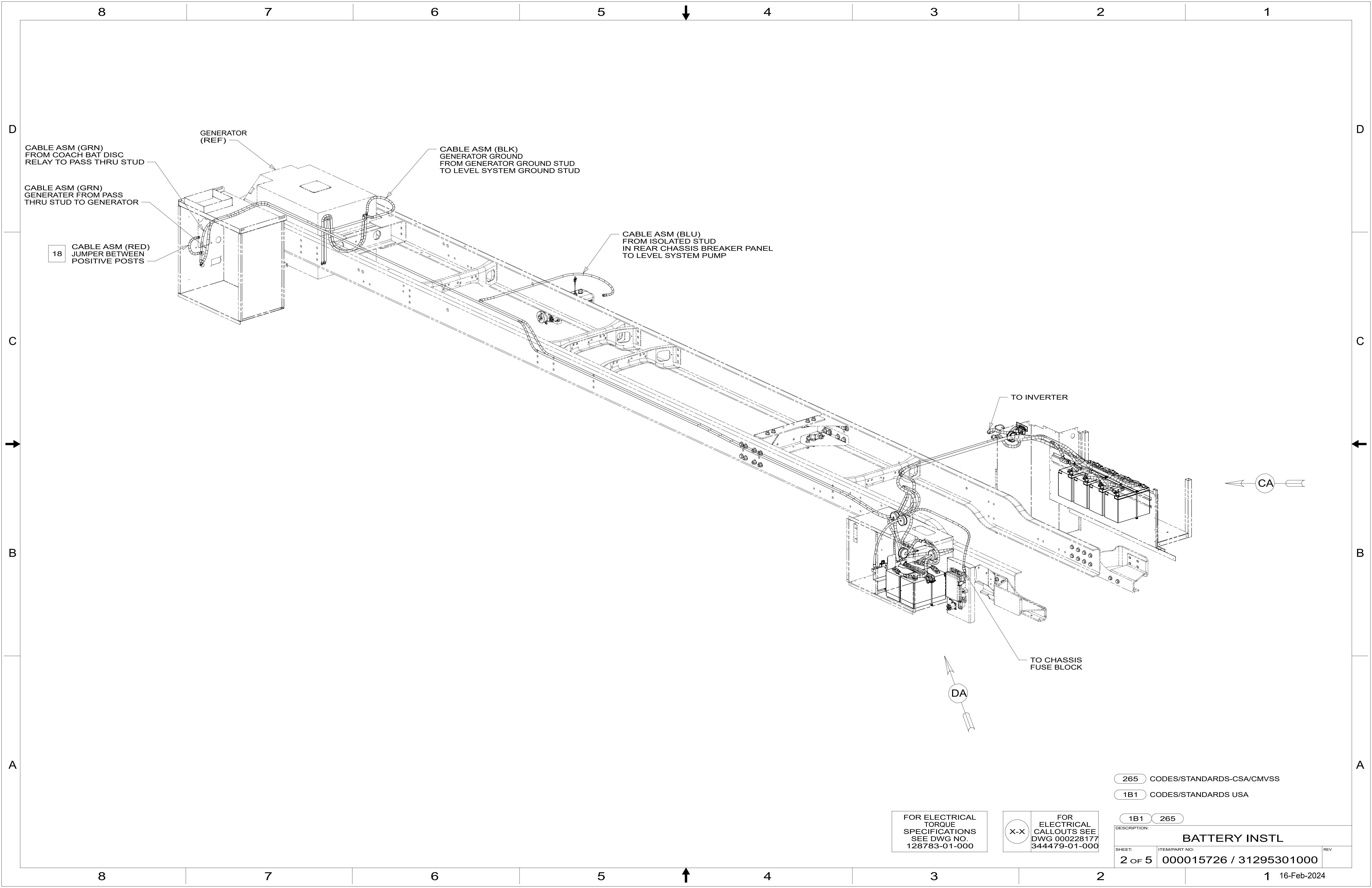
4

3

2

1





CABLE ASM (GRN)
FROM COACH BAT DISC
RELAY TO PASS THRU STUD

GENERATOR
(REF)

CABLE ASM (GRN)
GENERATOR FROM PASS
THRU STUD TO GENERATOR

CABLE ASM (BLK)
GENERATOR GROUND
FROM GENERATOR GROUND STUD
TO LEVEL SYSTEM GROUND STUD

18 CABLE ASM (RED)
JUMPER BETWEEN
POSITIVE POSTS

CABLE ASM (BLU)
FROM ISOLATED STUD
IN REAR CHASSIS BREAKER PANEL
TO LEVEL SYSTEM PUMP

TO INVERTER

TO CHASSIS
FUSE BLOCK

CA

DA

X-X
FOR ELECTRICAL
CALLOUTS SEE
DWG 000228177
344479-01-000

FOR ELECTRICAL
TORQUE
SPECIFICATIONS
SEE DWG NO.
128783-01-000

265 CODES/STANDARDS-CSA/CMVSS

1B1 CODES/STANDARDS USA

1B1 265

DESCRIPTION:
BATTERY INSTL

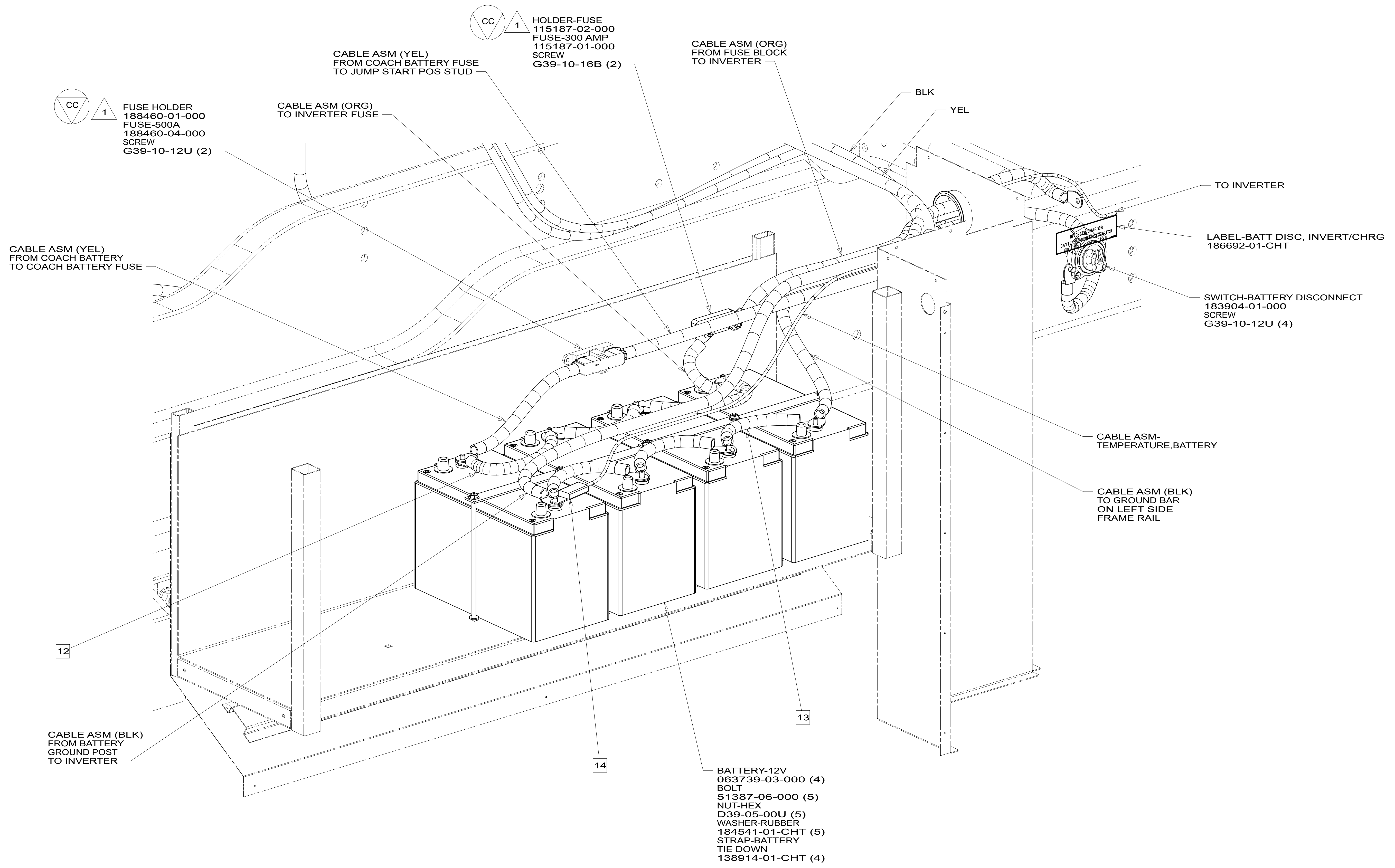
SHEET: 2 OF 5 ITEM/PART NO: 000015726 / 31295301000 REV

1 16-Feb-2024

8 7 6 5 4 3 2 1

D
C
B
A

D
C
B
A



VIEW CA

NOTES:
1 SEE COMPONENT DRAWING FOR TORQUE SPECIFICATIONS.

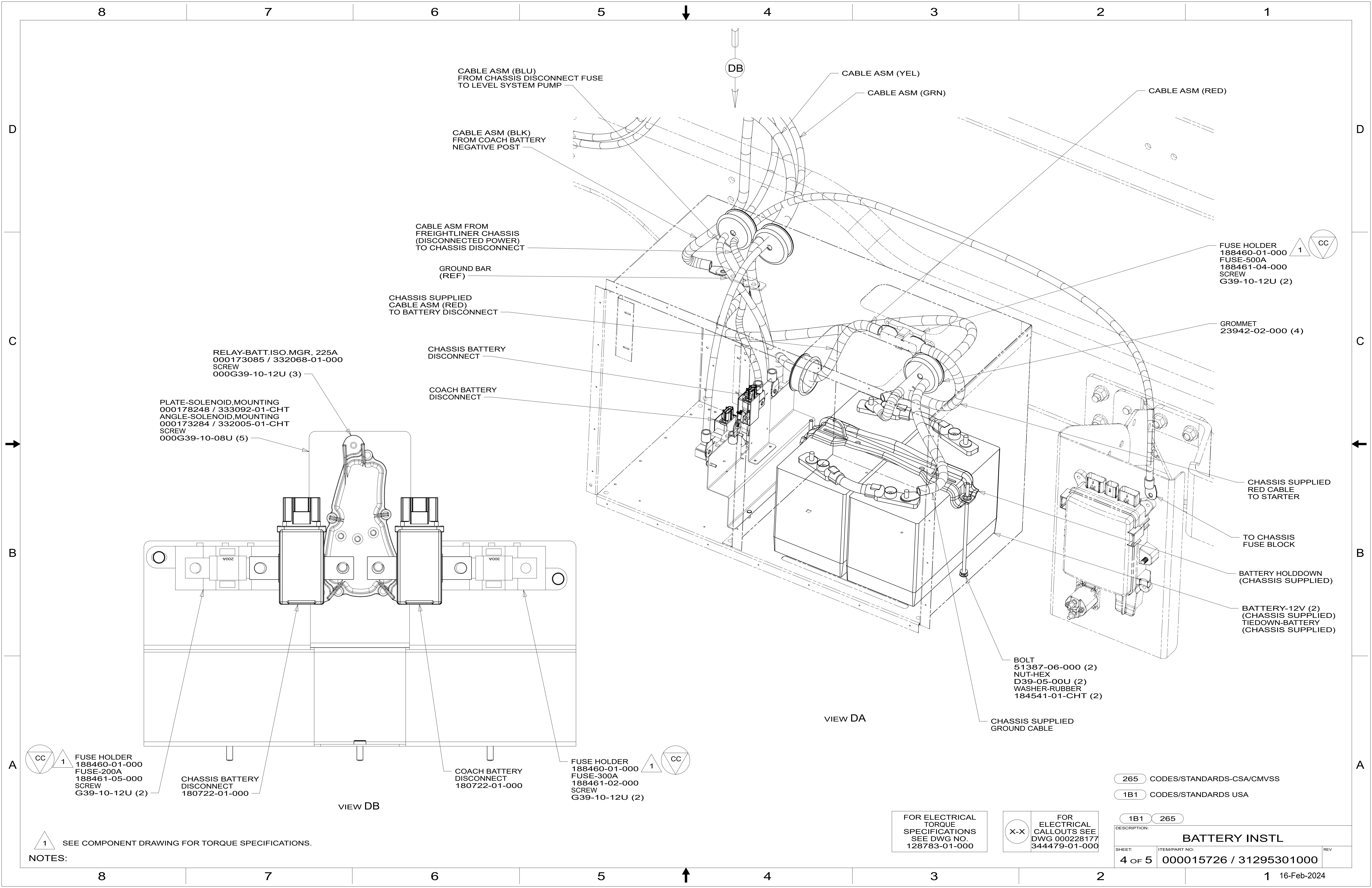
FOR ELECTRICAL TORQUE SPECIFICATIONS SEE DWG NO. 128783-01-000

FOR ELECTRICAL CALLOUTS SEE DWG 000228177 344479-01-000

265 CODES/STANDARDS-CSA/CMVSS
1B1 CODES/STANDARDS USA

DESCRIPTION:		1B1	265
BATTERY INSTL			
SHEET:	ITEM/PART NO.:	REV	
3 OF 5	000015726 / 31295301000		

8 7 6 5 4 3 2 1 16-Feb-2024



CABLE ASM (BLU)
FROM CHASSIS DISCONNECT FUSE
TO LEVEL SYSTEM PUMP

CABLE ASM (YEL)

CABLE ASM (GRN)

CABLE ASM (RED)

CABLE ASM (BLK)
FROM COACH BATTERY
NEGATIVE POST

CABLE ASM FROM
FREIGHTLINER CHASSIS
(DISCONNECTED POWER)
TO CHASSIS DISCONNECT

GROUND BAR
(REF)

CHASSIS SUPPLIED
CABLE ASM (RED)
TO BATTERY DISCONNECT

FUSE HOLDER
188460-01-000
FUSE-500A
188461-04-000
SCREW
G39-10-12U (2)

GROMMET
23942-02-000 (4)

RELAY-BATT.ISO.MGR, 225A
000173085 / 332068-01-000
SCREW
000G39-10-12U (3)

CHASSIS BATTERY
DISCONNECT

COACH BATTERY
DISCONNECT

PLATE-SOLENOID.MOUNTING
000178248 / 333092-01-CHT
ANGLE-SOLENOID.MOUNTING
000173284 / 332005-01-CHT
SCREW
000G39-10-08U (5)

CHASSIS SUPPLIED
RED CABLE
TO STARTER

TO CHASSIS
FUSE BLOCK

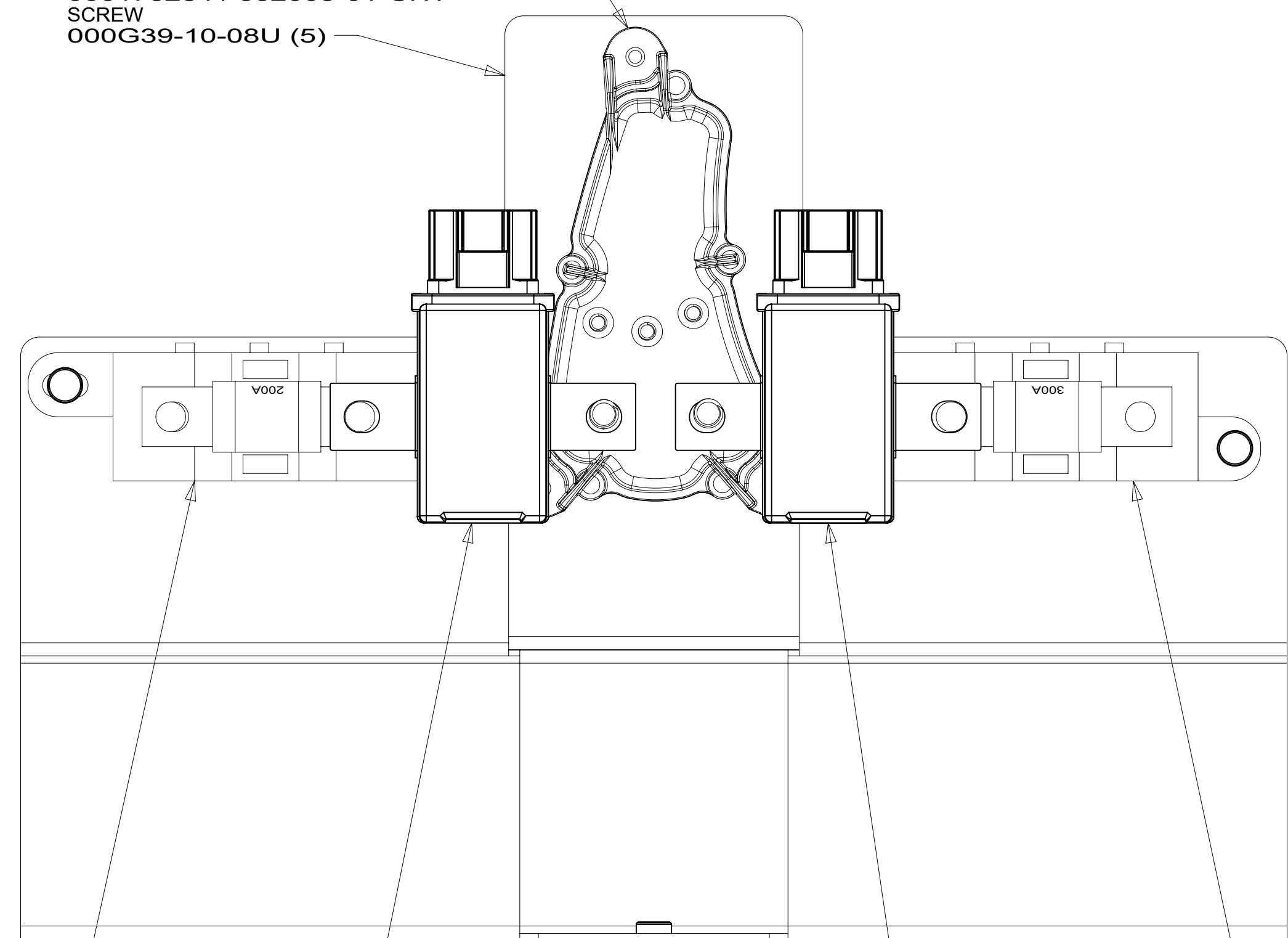
BATTERY HOLDDOWN
(CHASSIS SUPPLIED)

BATTERY-12V (2)
(CHASSIS SUPPLIED)
TIEDOWN-BATTERY
(CHASSIS SUPPLIED)

BOLT
51387-06-000 (2)
NUT-HEX
D39-05-00U (2)
WASHER-RUBBER
184541-01-CHT (2)

CHASSIS SUPPLIED
GROUND CABLE

VIEW DA



VIEW DB

FUSE HOLDER
188460-01-000
FUSE-300A
188461-02-000
SCREW
G39-10-12U (2)

COACH BATTERY
DISCONNECT
180722-01-000

CHASSIS BATTERY
DISCONNECT
180722-01-000

FUSE HOLDER
188460-01-000
FUSE-200A
188461-05-000
SCREW
G39-10-12U (2)

265 CODES/STANDARDS-CSA/CMVSS

1B1 CODES/STANDARDS USA

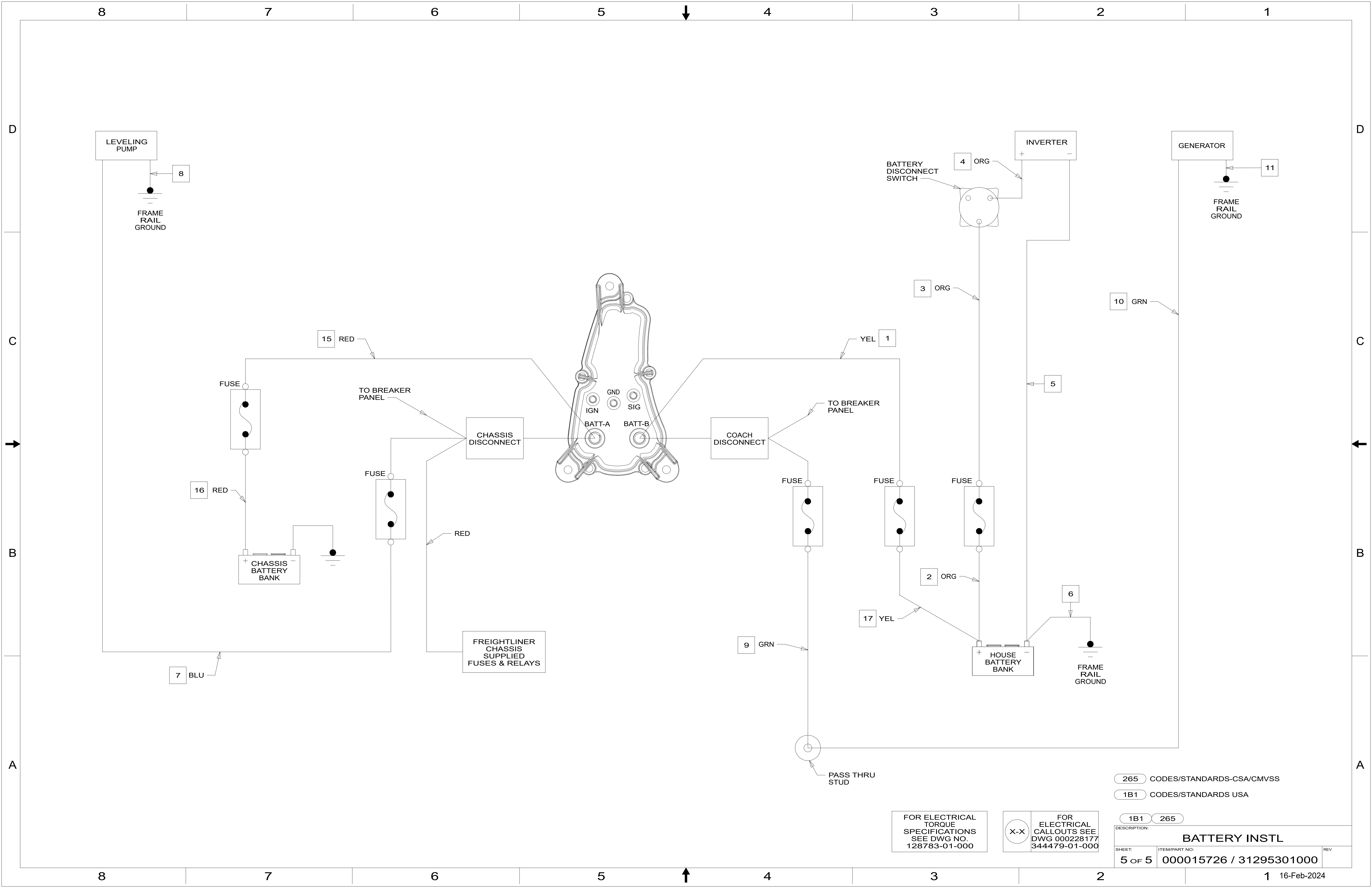
1B1 265

FOR ELECTRICAL
TORQUE
SPECIFICATIONS
SEE DWG NO.
128783-01-000

FOR ELECTRICAL
CALLOUTS SEE
DWG 000228177
344479-01-000

DESCRIPTION: BATTERY INSTL		
SHEET: 4 OF 5	ITEM/PART NO.: 000015726 / 31295301000	REV:
1 16-Feb-2024		

NOTES:
1 SEE COMPONENT DRAWING FOR TORQUE SPECIFICATIONS.



FOR ELECTRICAL TORQUE SPECIFICATIONS SEE DWG NO. 128783-01-000

FOR ELECTRICAL CALLOUTS SEE DWG 000228177 344479-01-000

265 CODES/STANDARDS-CSA/CMVSS

1B1 CODES/STANDARDS USA

1B1 265

DESCRIPTION: BATTERY INSTL

SHEET: 5 OF 5 ITEM/PART NO.: 000015726 / 31295301000 REV

1 16-Feb-2024