

- 4 NOT USED WITH 1DF
ROUTE WIRES INTO SLIDEROOM FOR IN-WALL EXTERIOR TV.
- 3 WIRE PASSES THROUGH FLOOR IN THIS AREA.

2. ROUTE TANK SENSOR WIRES SO THEY DO NOT PASS OVER SENSORS. USE WIRE TIE MOUNT 155366-01-000 AND WIRE TIE 8343-01-000 AS NEEDED. TANK SURFACE MUST BE CLEANED USING ISOPROPYL ALCOHOL AND PRIMED WITH PRIMER 94.
1. AT MINIMUM ALL WIRES TO BE SUPPORTED AND SECURED PER CODE REQUIREMENTS. USE CLAMP 10495 OR 10497 OR WIRE TIE 8343 OR 108046 AND SCREW G67-XX-XXX OR G56-XX-XXX AS APPROPRIATE FOR INSTALLATION.

NOTES:

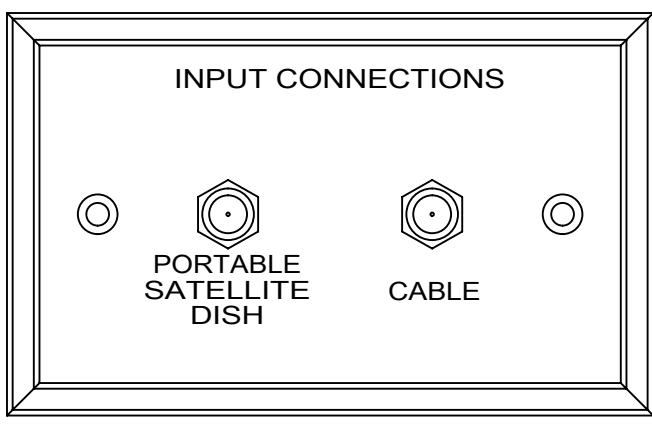


PLATE-WALL
149557-03-CHT
SCREW
G39-08-08U (2)

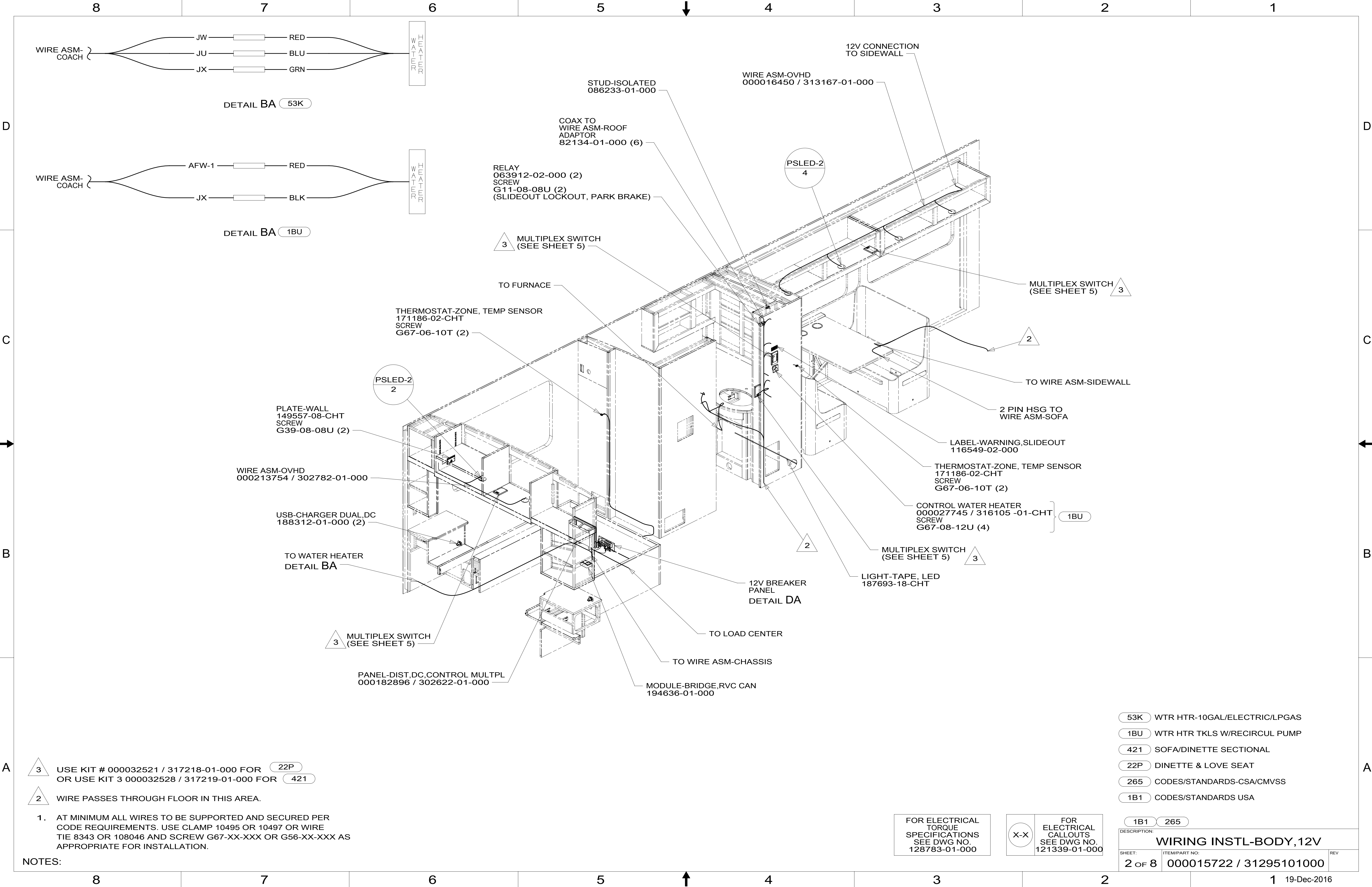
FOR ELECTRICAL
TORQUE
SPECIFICATIONS
SEE DWG NO.
128783-01-000

FOR ELECTRICAL
CALLOUTS
SEE DWG NO.
121339-01-000

- 1DF EXT TV ENTERTAINMENT CENTER
- 265 CODES/STANDARDS-CSA/CMVSS
- 1B1 CODES/STANDARDS USA
- 1B1 265

COPYRIGHT 2016 WINNEBAGO INDUSTRIES, INC.

DSNR:		ALL DIMENSIONS ARE IN MILLIMETERS	
DFTR:			
UNSPECIFIED TOLERANCES:		MATERIAL:	
WHOLE DIM (X)	± 3		
ONE-PLACE (X.X)	± 1.5		
TWO-PLACE (X.XX)	± 0.50		
ANGLE	± 1°		
REFER TO ES0018 FOR FASTENER TIGHTENING GUIDELINES		WEIGHT: (LBS)	FIRST USED:
			17 L34T
DESCRIPTION:			
WIRING INSTL-BODY, 12V			
SHEET:	ITEM/PART NO:	REF:	
1 OF 8	000015722 / 31295101000	1 19-Dec-2016	



DETAIL BA 53K

DETAIL BA 1BU

- 53K WTR HTR-10GAL/ELECTRIC/LPGAS
- 1BU WTR HTR TKLS W/RECIRCUL PUMP
- 421 SOFA/DINETTE SECTIONAL
- 22P DINETTE & LOVE SEAT
- 265 CODES/STANDARDS-CSA/CMVSS
- 1B1 CODES/STANDARDS USA

FOR ELECTRICAL TORQUE SPECIFICATIONS SEE DWG NO. 128783-01-000

X-X

FOR ELECTRICAL CALLOUTS SEE DWG NO. 121339-01-000

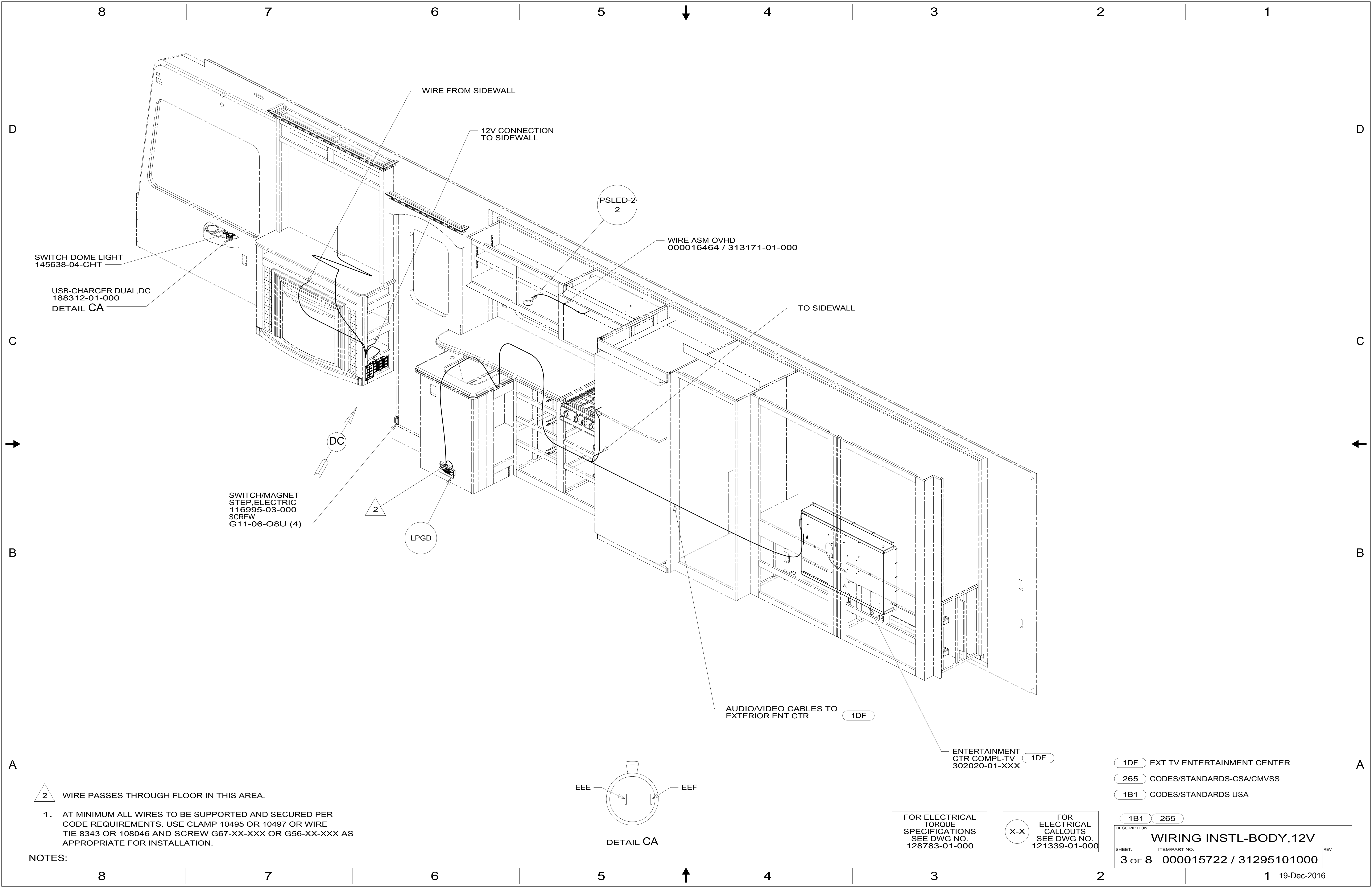
DESCRIPTION:

WIRING INSTL-BODY, 12V

SHEET: 2 OF 8

ITEM/PART NO: 000015722 / 31295101000

REV



SWITCH-DOME LIGHT
145638-04-CHT

USB-CHARGER DUAL,DC
188312-01-000
DETAIL CA

WIRE FROM SIDEWALL

12V CONNECTION
TO SIDEWALL

PSLED-2
2

WIRE ASM-OVHD
000016464 / 313171-01-000

TO SIDEWALL

SWITCH/MAGNET-
STEP,ELECTRIC
116995-03-000
SCREW
G11-06-O8U (4)

DC

2

LPGD

AUDIO/VIDEO CABLES TO
EXTERIOR ENT CTR

1DF

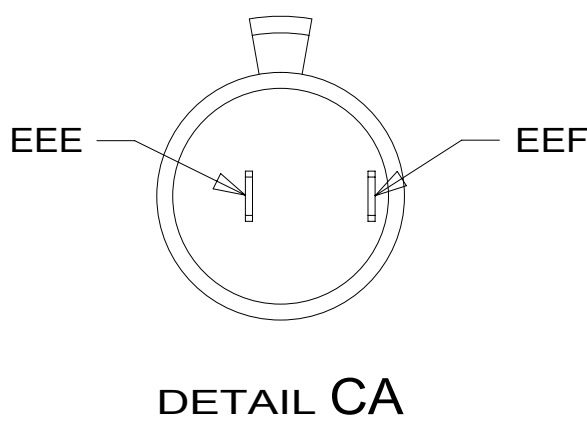
ENTERTAINMENT
CTR COMPL-TV
302020-01-XXX

1DF

2 WIRE PASSES THROUGH FLOOR IN THIS AREA.

1. AT MINIMUM ALL WIRES TO BE SUPPORTED AND SECURED PER CODE REQUIREMENTS. USE CLAMP 10495 OR 10497 OR WIRE TIE 8343 OR 108046 AND SCREW G67-XX-XXX OR G56-XX-XXX AS APPROPRIATE FOR INSTALLATION.

NOTES:



DETAIL CA

FOR ELECTRICAL
TORQUE
SPECIFICATIONS
SEE DWG NO.
128783-01-000

FOR
ELECTRICAL
CALLOUTS
SEE DWG NO.
121339-01-000

1DF EXT TV ENTERTAINMENT CENTER

265 CODES/STANDARDS-CSA/CMVSS

1B1 CODES/STANDARDS USA

1B1 265

DESCRIPTION:
WIRING INSTL-BODY,12V

SHEET: 3 OF 8 ITEM/PART NO: 000015722 / 31295101000 REV

D

C

B

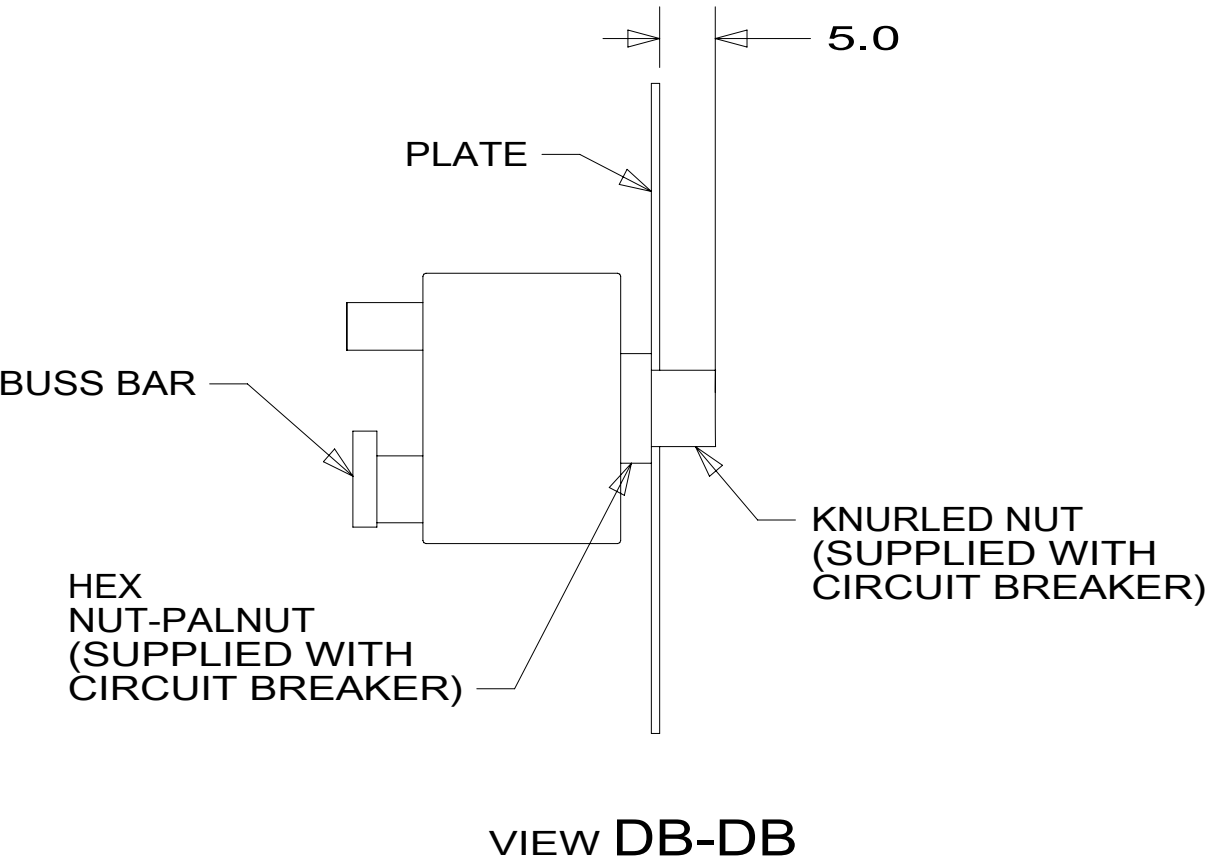
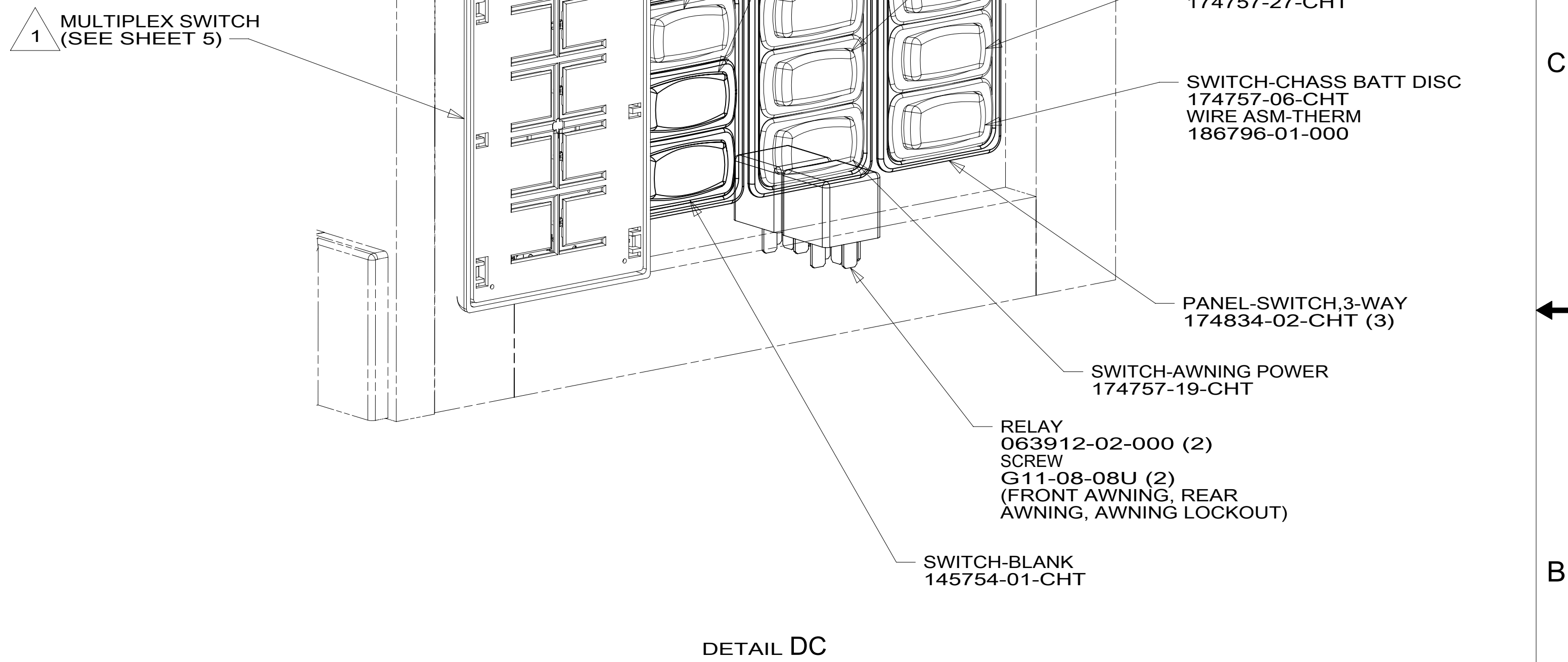
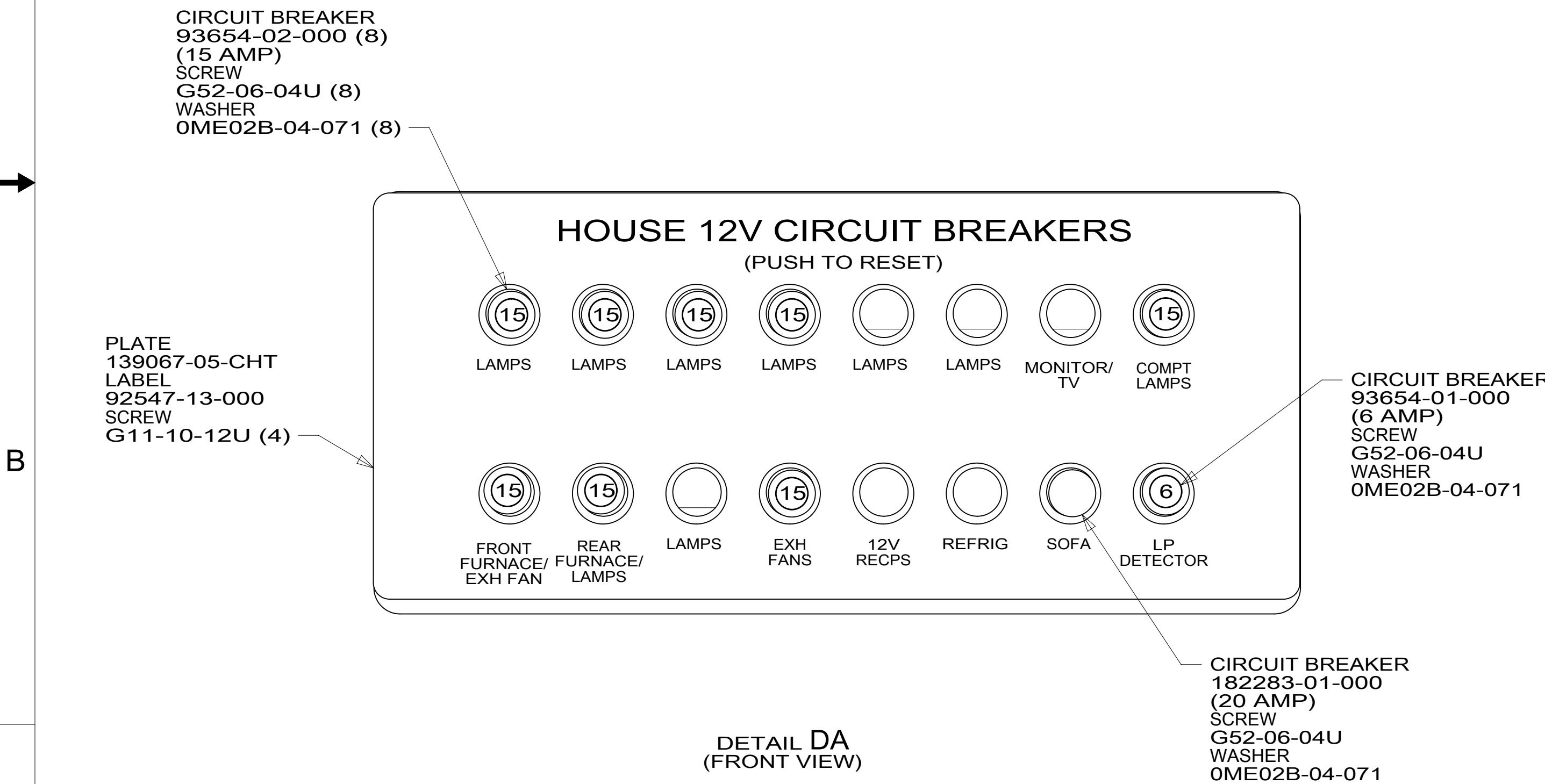
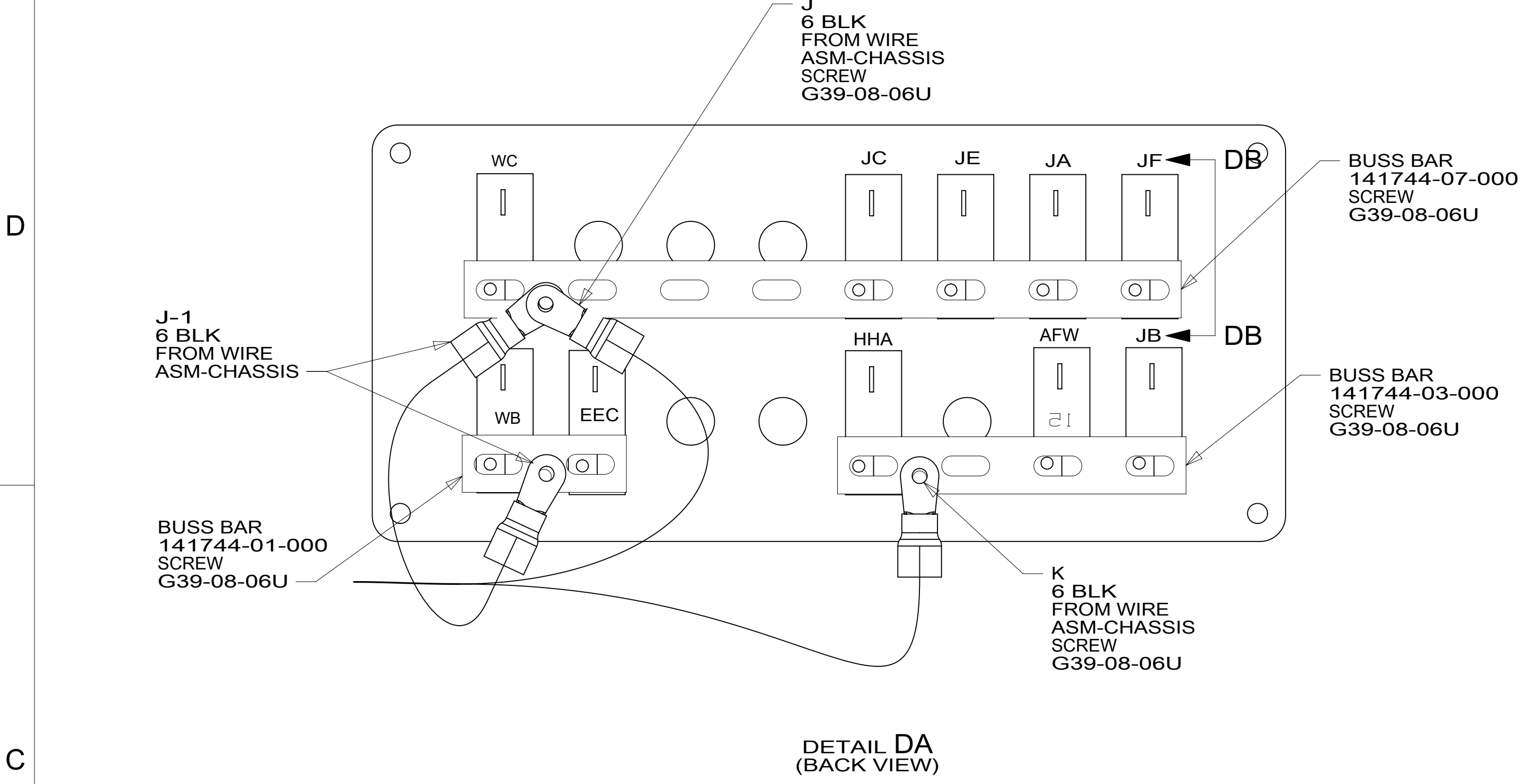
A

D

C

B

A



NOTES:

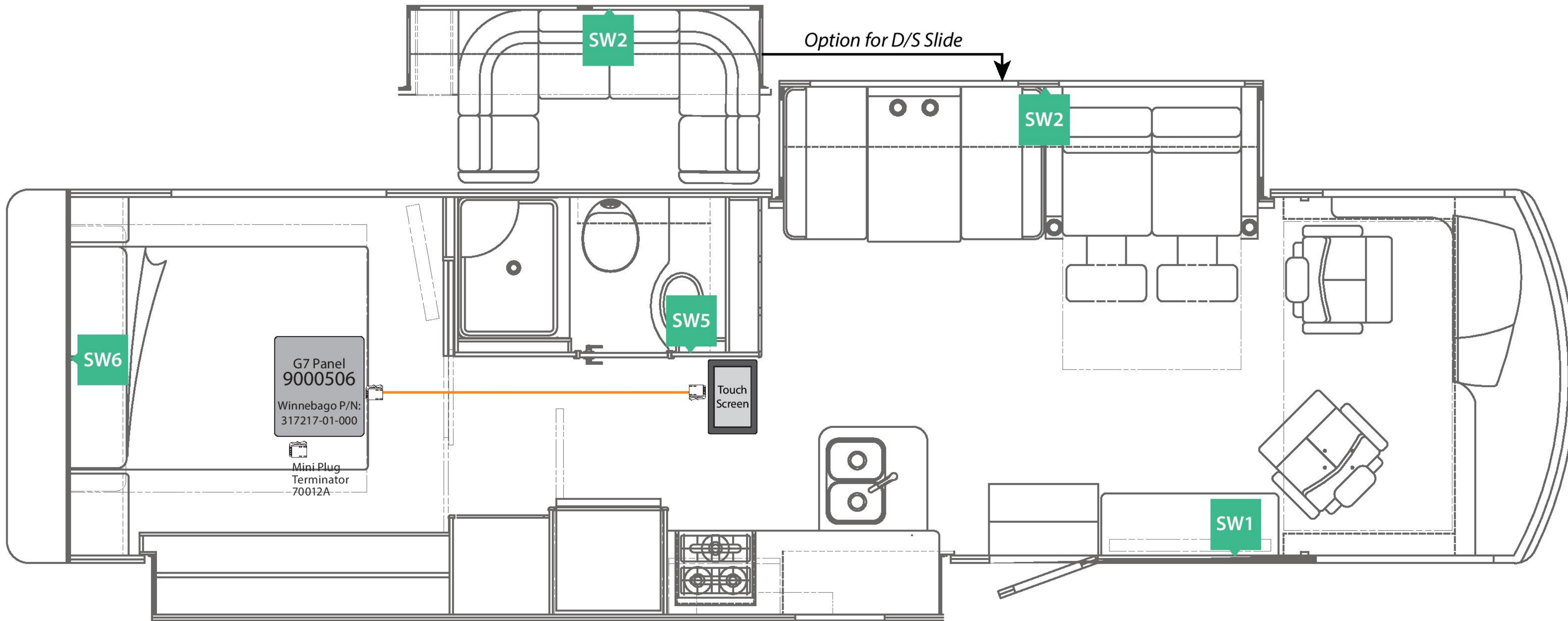
1 USE KIT # 000032521 / 317218-01-000 FOR 22P OR USE KIT 3 000032528 / 317219-01-000 FOR 421

FOR ELECTRICAL
TORQUE
SPECIFICATIONS
SEE DWG NO.
128783-01-000

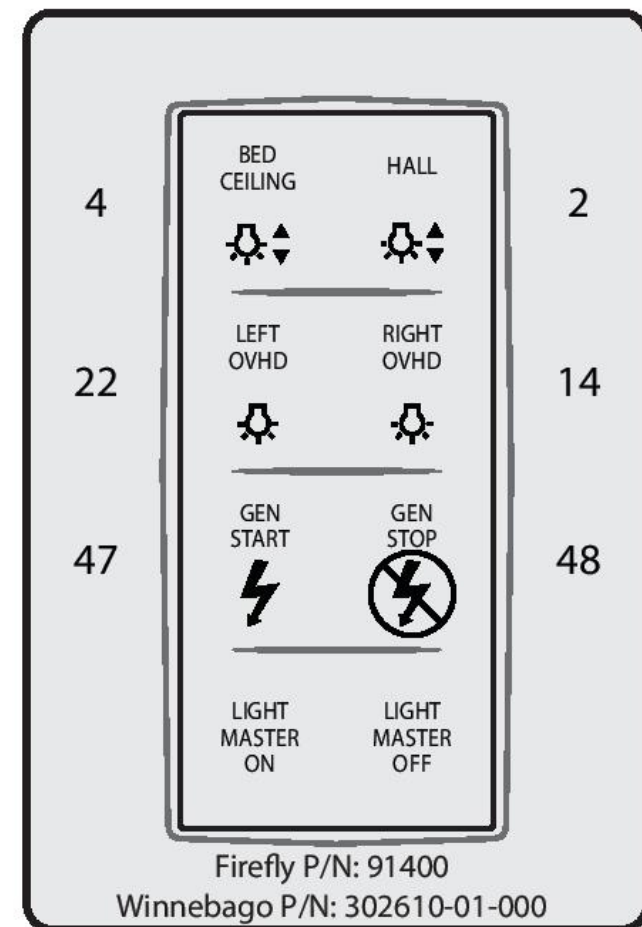
FOR
ELECTRICAL
CALLOUTS
SEE DWG NO.
121339-01-000

- 421 SOFA/DINETTE SECTIONAL
- 22P DINETTE & LOVE SEAT
- 265 CODES/STANDARDS-CSA/CMVSS
- 1B1 CODES/STANDARDS USA

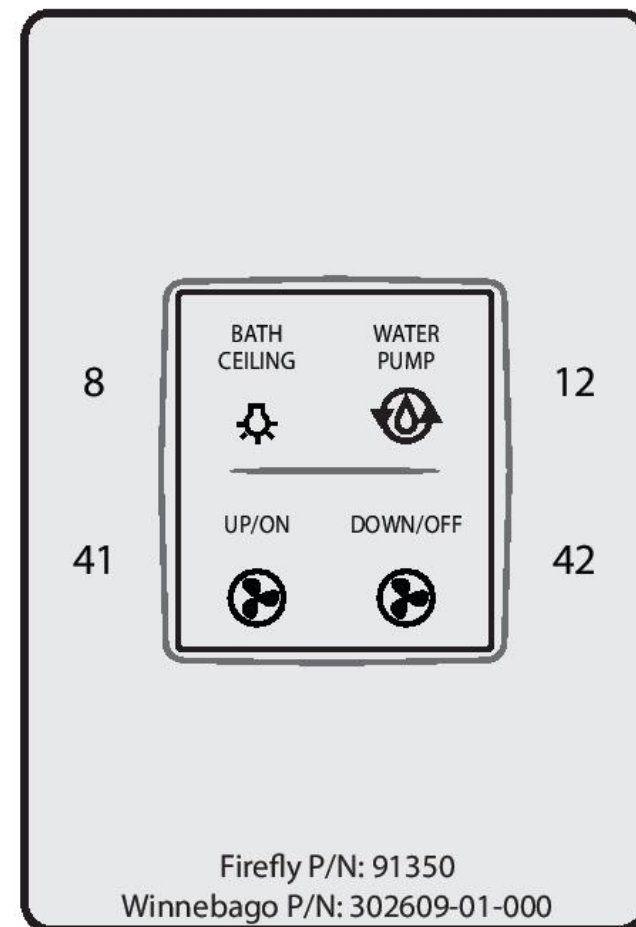
DESCRIPTION:		
WIRING INSTL-BODY, 12V		
SHEET:	ITEM/PART NO:	REV
4 OF 8	000015722 / 31295101000	



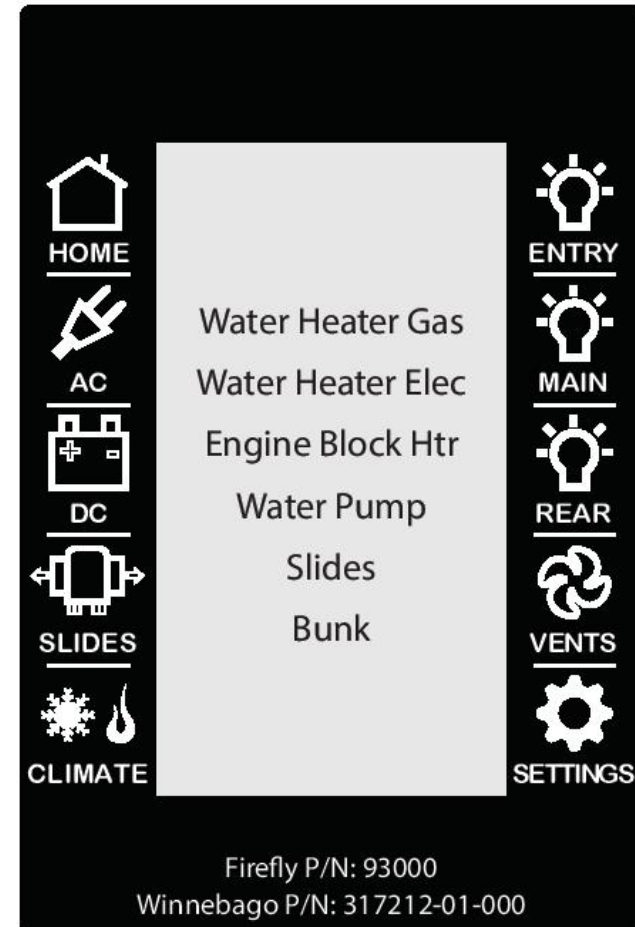
Winnebago - L34T
SW6 - Bedroom



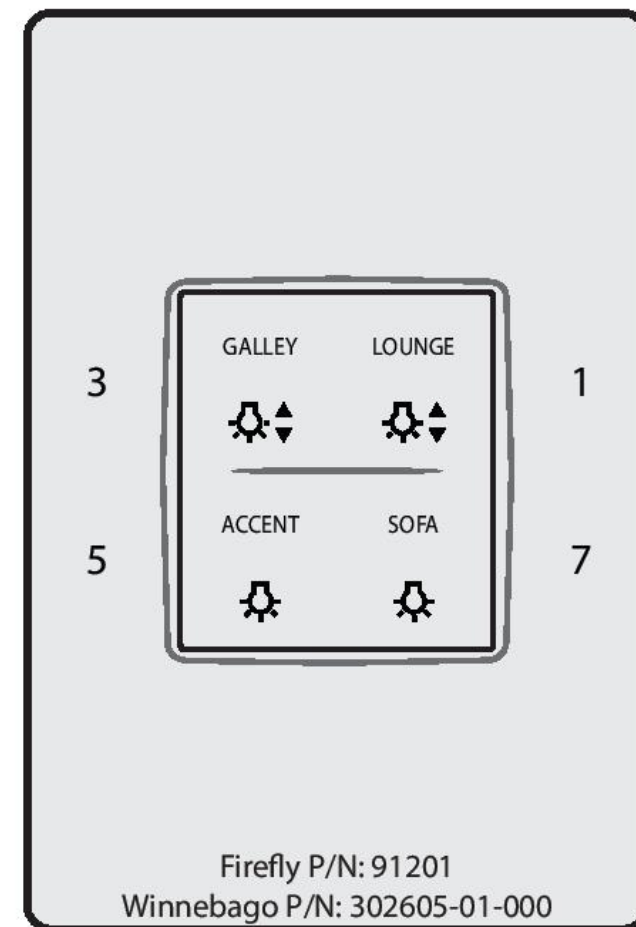
Winnebago - L34T
SW5 - Mid Bath



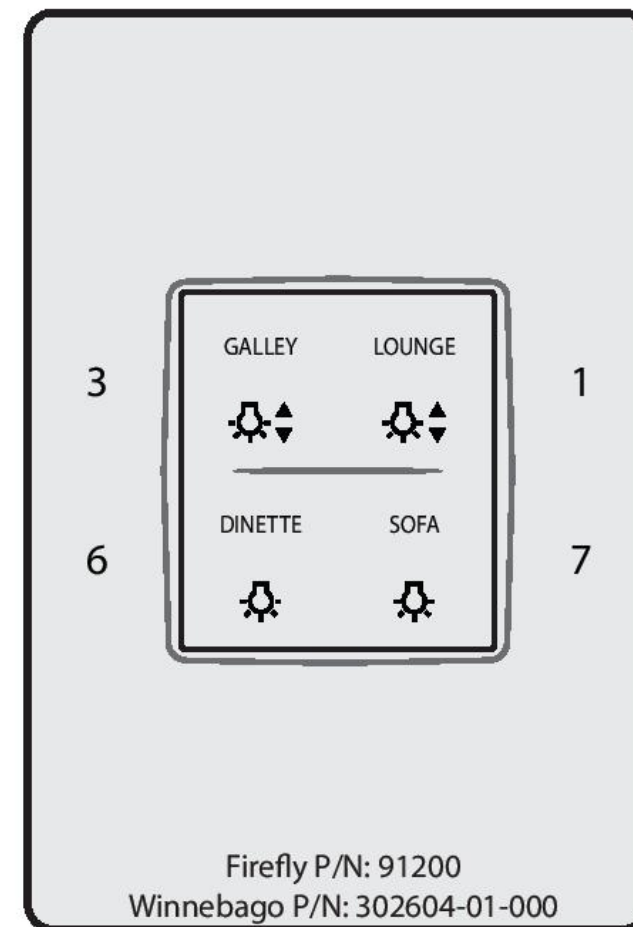
Winnebago - L34T
SW20T - 4.3" Touchscreen



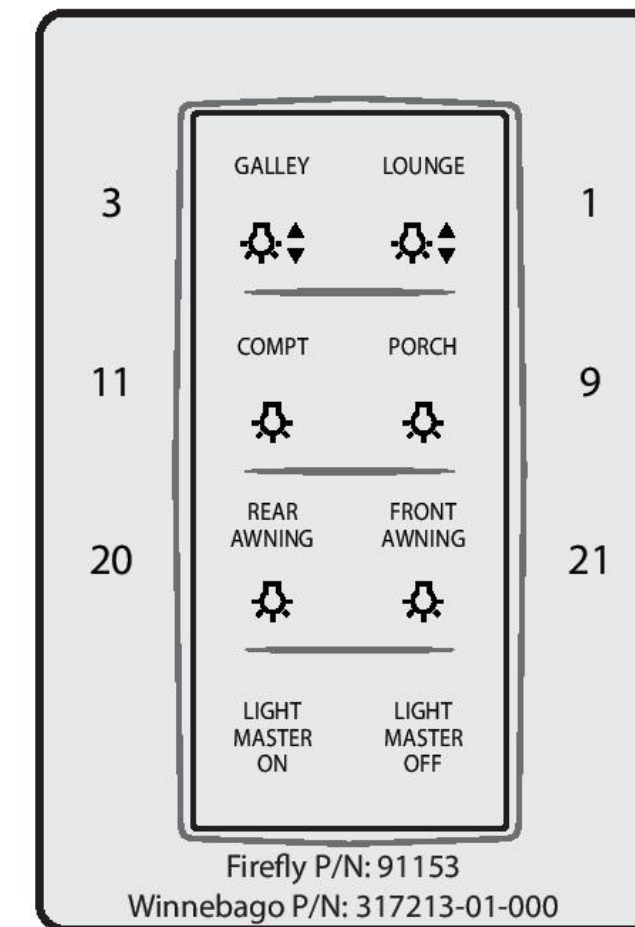
Winnebago - L34T
SW2 - Lounge - OPTION **



Winnebago - L34T
SW2 - Lounge **



Winnebago - L34T
SW1 - Entry



L34T KIT*: Firefly P/N: 90850AB
L34T Winnebago P/N: 317218-01-000
L34T OPTION KIT*: Firefly P/N: 90850AE
L34T OPTION Winnebago P/N: 317219-01-000
* Kits may not include all components shown on print.

WINNEBAGO - L34T - V2

Network Wiring Diagram and Switch Panel Layout

SSP-17 & 4.3" Screen (6v9)

Rev. 1v1

09/22/16

DI: AD

PI: AD

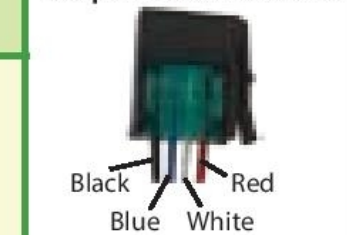
Network Legend

Trunk Cable

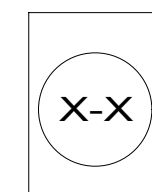
Drop Cable

Switch Position

Drop Cable Connections



FOR ELECTRICAL
TORQUE
SPECIFICATIONS
SEE DWG NO.
128783-01-000



FOR
ELECTRICAL
CALLOUTS
SEE DWG NO.
121339-01-000

265 CODES/STANDARDS-CSA/CMVSS

1B1 CODES/STANDARDS USA

1B1 265

DESCRIPTION:
WIRING INSTL-BODY, 12V

SHEET: 5 OF 8 ITEM/PART NO: 000015722 / 31295101000 REV

19-Dec-2016

