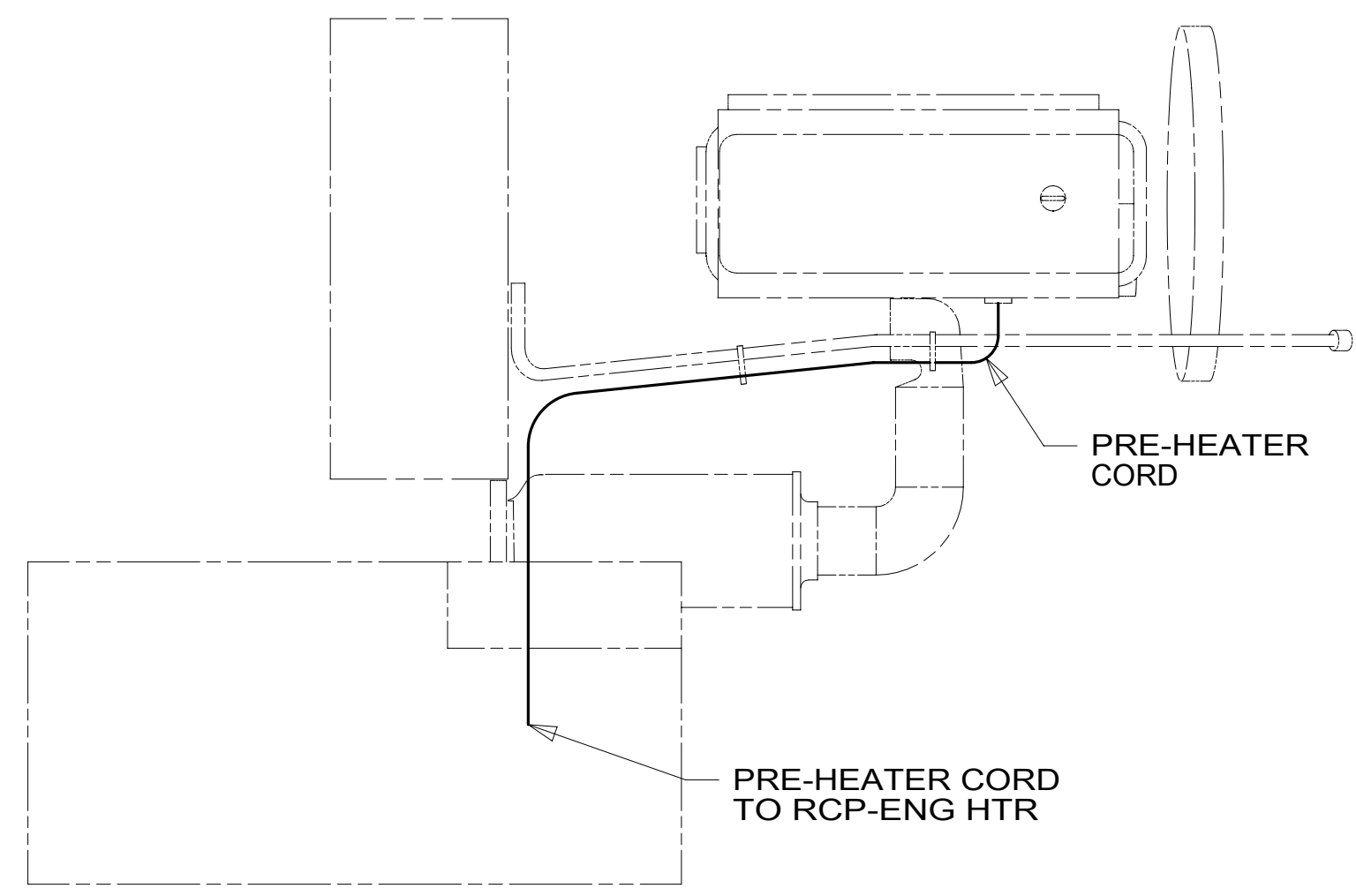


- 7 REST WIRE IN FRAME RAIL WHEN APPLICABLE.
- 6 CLAMP 83610-01-000, SCREW G39-08-12B.
- 5 CLAMP 10497-03-000, SCREW G39-08-12B.
- 4 USE TIE-WIRE 8343-04-000 TO SECURE WIRES TO FLOOR SUPPORT FRAME AT LEAST ONCE EVERY 600MM.
- 3 SECURE CORD AWAY FROM ALL MOVING PARTS AND EXHAUST WITH WIRE-TIE 93147-01-000 AS REQUIRED.
- 2 SEE WIRING INSTL-FRONT END FOR ADDITIONAL INFORMATION.
- 1 SEE BATTERY INSTL FOR ADDITIONAL INFORMATION.

NOTES:



DETAIL AA 3

FOR ELECTRICAL TORQUE SPECIFICATIONS SEE DWG NO. 128783-01-000

FOR ELECTRICAL CALLOUTS SEE DWG NO. 121339-01-000

- 265 CODES/STANDARDS-CSA/CMVSS
- 1B1 CODES/STANDARDS USA

1B1 265

WINNEBAGO[®]

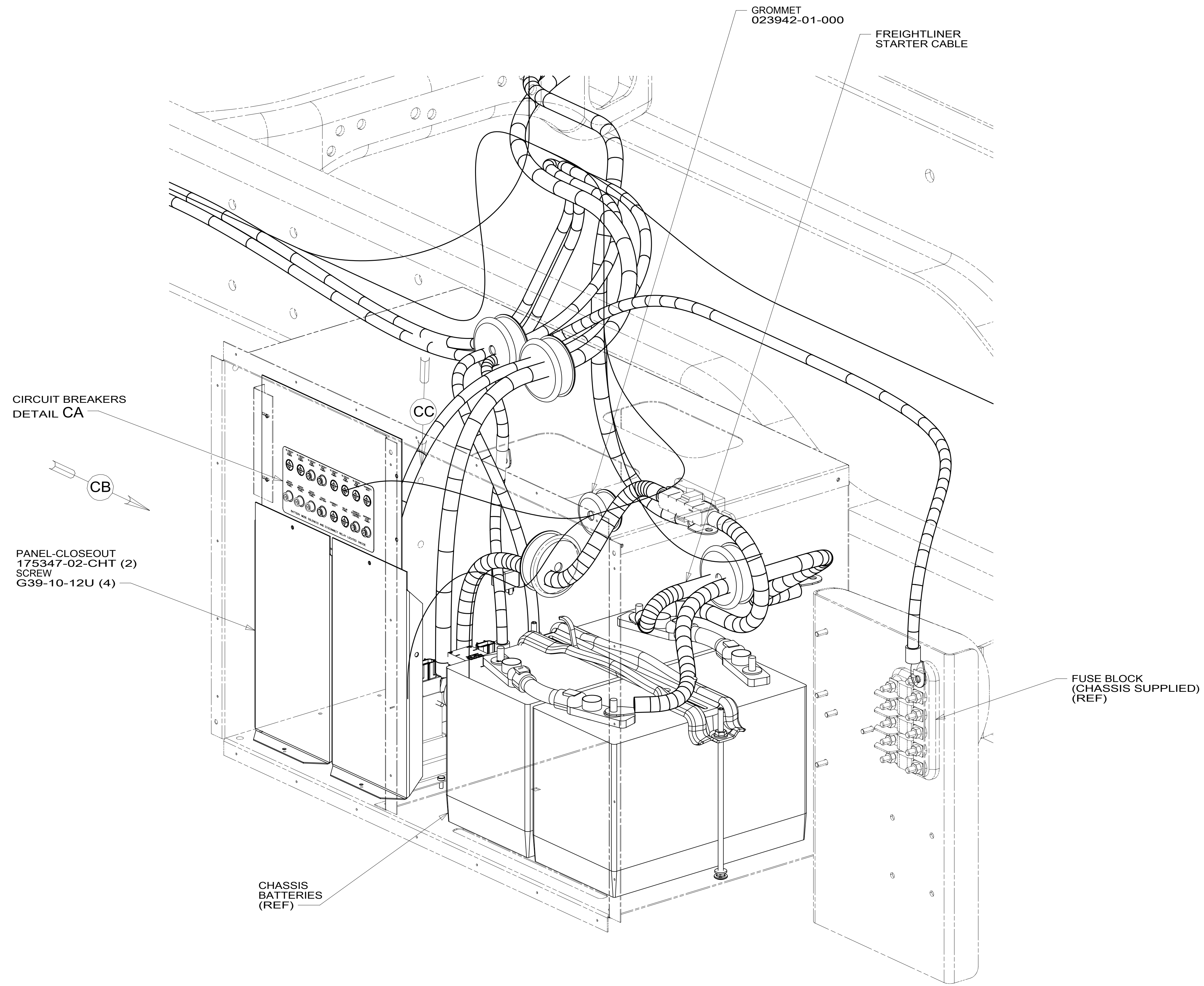
COPYRIGHT 2016 WINNEBAGO INDUSTRIES, INC.

DSNR:		ALL DIMENSIONS ARE IN MILLIMETERS
DFFR:		
UNSPECIFIED TOLERANCES:		MATERIAL:
WHOLE DIM (X) :	3	
ONE-PLACE (X.X) :	1.5	
TWO-PLACE (X.XX) :	0.50	
ANGLE :	1°	
REFER TO ES0018 FOR FASTENER TIGHTENING GUIDELINES	WEIGHT: (LBS)	FIRST USED:
		17 L34T

DESCRIPTION: WIRING INSTL-CHASSIS		
SHEET: 1 OF 4	ITEM/PART NO: 000015721 / 31295001000	REV:

8 7 6 5 4 3 2 1

D
C
B
A



VIEW BA

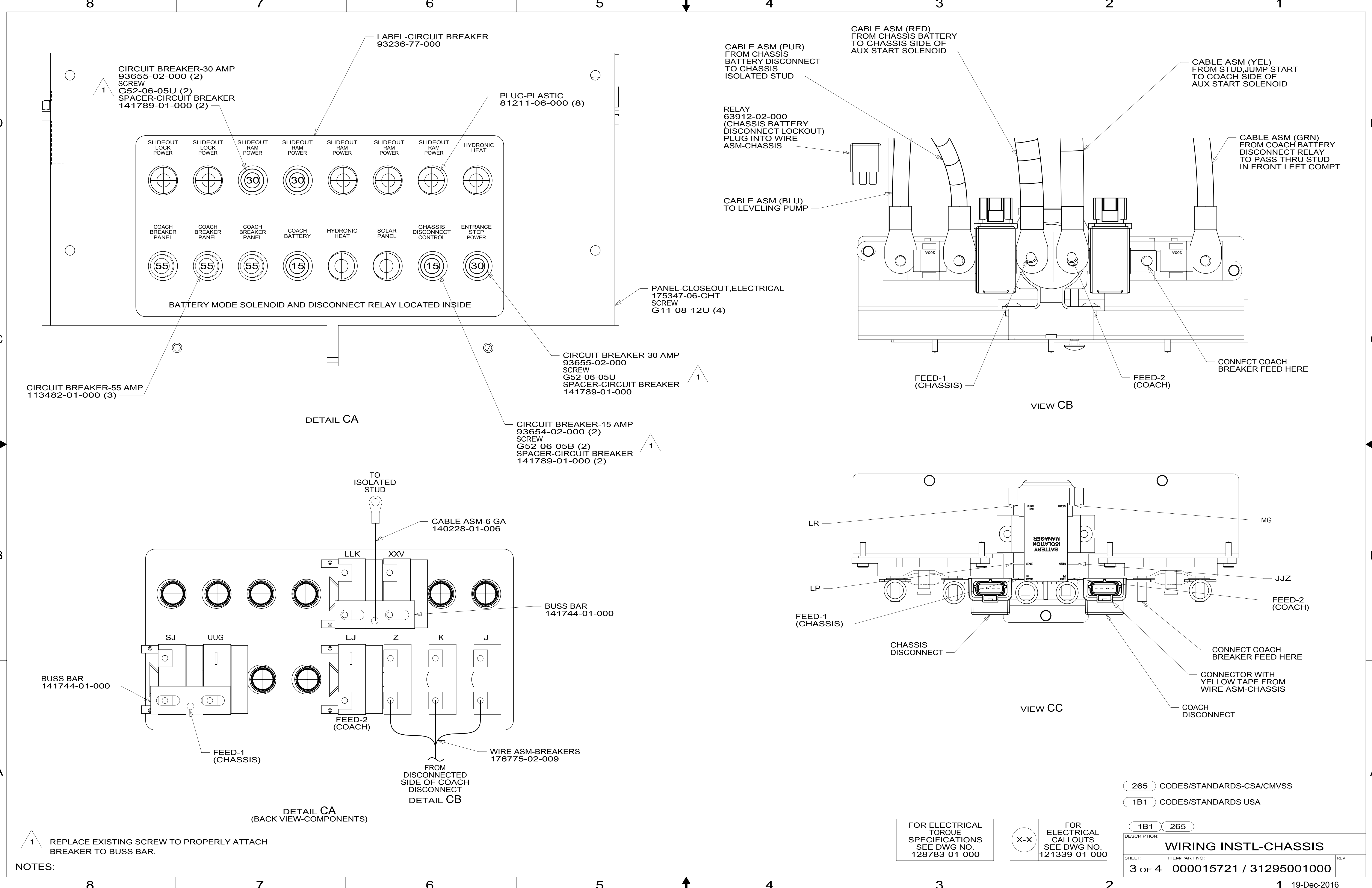
FOR ELECTRICAL TORQUE SPECIFICATIONS SEE DWG NO. 128783-01-000

FOR ELECTRICAL CALLOUTS SEE DWG NO. 121339-01-000

- 265 CODES/STANDARDS-CSA/CMVSS
- 1B1 CODES/STANDARDS USA

DESCRIPTION:		1B1 265
WIRING INSTL-CHASSIS		
SHEET:	ITEM/PART NO.:	REV
2 OF 4	000015721 / 31295001000	

8 7 6 5 4 3 2 1 19-Dec-2016



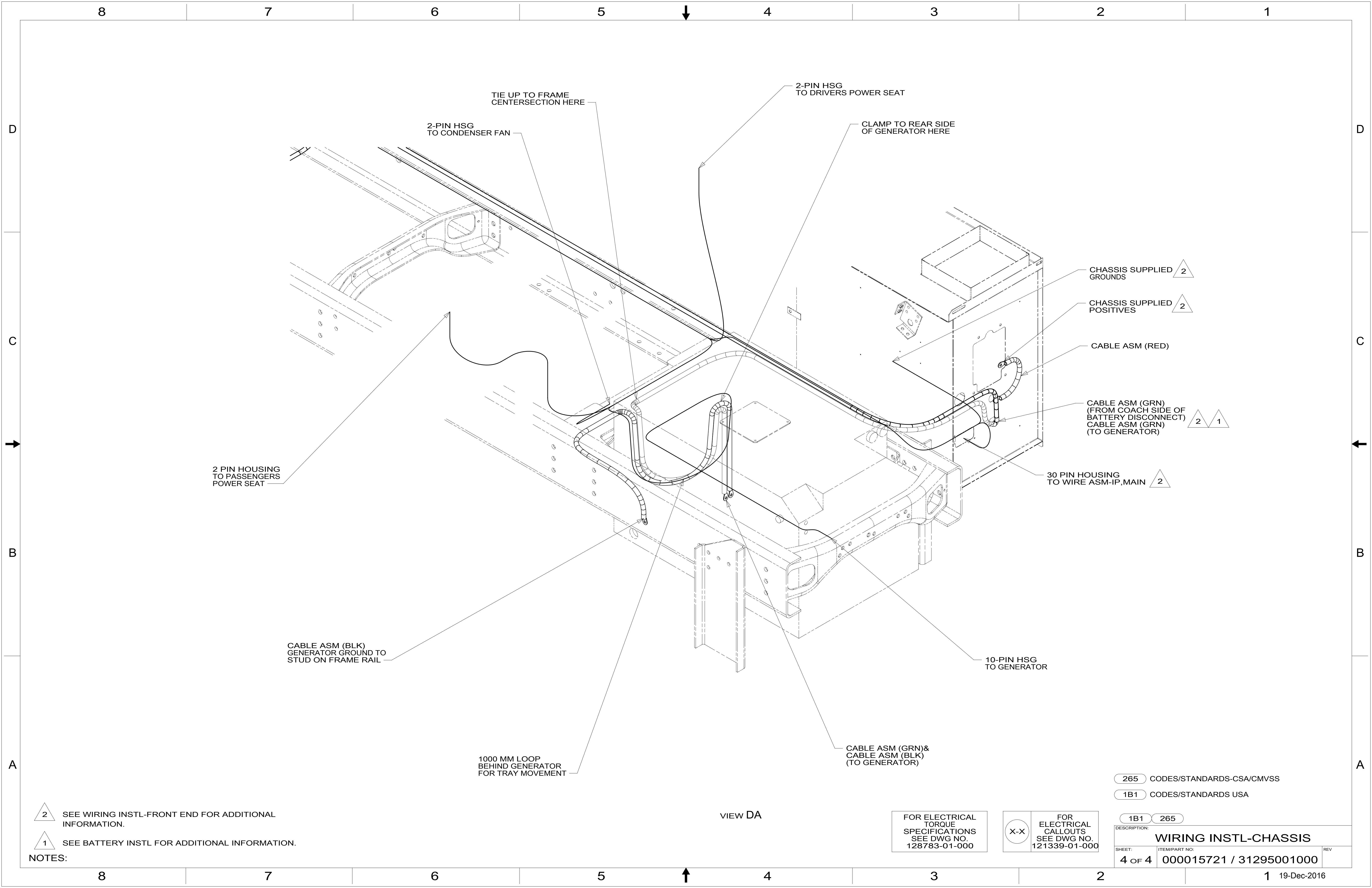
1 REPLACE EXISTING SCREW TO PROPERLY ATTACH BREAKER TO BUSS BAR.

FOR ELECTRICAL TORQUE SPECIFICATIONS SEE DWG NO. 128783-01-000

FOR ELECTRICAL CALLOUTS SEE DWG NO. 121339-01-000

- 265 CODES/STANDARDS-CSA/CMVSS
- 1B1 CODES/STANDARDS USA

DESCRIPTION: WIRING INSTL-CHASSIS	
SHEET: 3 OF 4	ITEM/PART NO.: 000015721 / 31295001000
REV 19-Dec-2016	



2-PIN HSG TO CONDENSER FAN

TIE UP TO FRAME CENTERSECTION HERE

2-PIN HSG TO DRIVERS POWER SEAT

CLAMP TO REAR SIDE OF GENERATOR HERE

2 PIN HOUSING TO PASSENGERS POWER SEAT

CHASSIS SUPPLIED GROUNDS 2

CHASSIS SUPPLIED POSITIVES 2

CABLE ASM (RED)

CABLE ASM (GRN) (FROM COACH SIDE OF BATTERY DISCONNECT) CABLE ASM (GRN) (TO GENERATOR) 2 1

30 PIN HOUSING TO WIRE ASM-IP,MAIN 2

10-PIN HSG TO GENERATOR

CABLE ASM (GRN) & CABLE ASM (BLK) (TO GENERATOR)

1000 MM LOOP BEHIND GENERATOR FOR TRAY MOVEMENT

CABLE ASM (BLK) GENERATOR GROUND TO STUD ON FRAME RAIL

2 SEE WIRING INSTL-FRONT END FOR ADDITIONAL INFORMATION.

1 SEE BATTERY INSTL FOR ADDITIONAL INFORMATION.

VIEW DA

FOR ELECTRICAL TORQUE SPECIFICATIONS SEE DWG NO. 128783-01-000

FOR ELECTRICAL CALLOUTS SEE DWG NO. 121339-01-000

265 CODES/STANDARDS-CSA/CMVSS

1B1 CODES/STANDARDS USA

DESCRIPTION:		1B1	265
WIRING INSTL-CHASSIS			
SHEET:	ITEM/PART NO.:	REV	
4 OF 4	000015721 / 31295001000		