

8

7

6

5

4

3

2

1

D

D

AA

AA

AB

AB

C

C

B

B

B

B

A

A

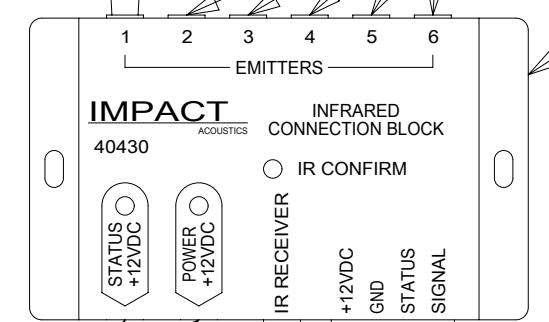
CONNECTOR-F,90 RIGHT ANGLE
176986-01-000 (3)WALL PLATE-BLANK,PLASTIC
192613-01-CHT (2)CABINET ASM-OVHD,DOOR
(REF)SWITCH-VID,ANT,
DVD PWR SUP
193571-01-000
BRACKET-
VIDEO SWITCH
156586-01-CHT
FASTENER-DUAL LOCK
085774-01-000 (200 MM) (2)
085774-02-000 (200 MM) (2)CABINET ASM-OVHD,DOOR
(REF)12V AND IR RECEIVER CABLE
TO IR MODULEMODULE-INTERFACE,
IR IMPACT
149750-09-000
WIRE ASM-
EXTENSION,2 PIN
000028274 / 316209-01-000
DETAIL AC68R COAX (GRN)
TO SPLITTER68R COAX (YEL)
TO SPLITTER68R SPLITTER-TV,2 WAY
086756-01-000110V (PUR-2)
FROM ROOF
TO OUTLET12V AND COAX
FROM ROOF5 COAX (RED/RED)
TO SAT
PREP PLATE5 COAX (GLD)
TO SAT
PREP PLATE5 COAX (ORG)
TO SAT
PREP PLATEPANEL-COVER,
BRACKET
194672-03-CHT
SCREW
000G67-08-08UPANEL-COVER,
BRACKET
000122894 / 323485-01-CHT
SCREW
000G67-08-08U4 TRANSMITTER-
INFRARED,IMPACT
149750-11-000RCA,3-WAY
TO VIDEO
SWITCHERCOAX (RED)
TO VIDEO
SWITCHER68R COAX (UNMARKED)
TO VIDEO SWITCHER
OR
1H5 COAX (GRN)
TO VIDEO SWITCHERCOAX (RED/RED)
TO VIDEO SWITCHER12V AND COAX
FROM ROOF110V (PUR-2)
FROM ROOF
TO OUTLETHDMI TO
SAT PREP
AREACOAX (UNMARKED)
TO VIDEO SWITCHER 68R
OR
COAX (YEL)
TO VIDEO SWITCHER 1H5COAX (BLU)
TO VIDEO
SWITCHER12V TO
VIDEO
SWITCHERCOAX (BRN)
TO VIDEO
SWITCHER

SECTION AA-AA

RCP-2 (PUR-2)
OVHD A/V CABRCP-2 (PUR-2)
SAT PREPCLAMP
10497-02-000 (2)CABINET ASM-OVHD,DOOR
(REF)

CABLE-TRANSMITTER

NOT USED

MODULE-
INTERFACE,IR

NOT USED

NOT USED

CABLE-RECEIVER

NOT USED

WIRE ASM-
EXTENSION,2-PINTO 12V
POWER
SOURCE

DETAIL AC

5 CONNECTED TO THE REAR SIDE OF SATELLITE PREP PLATE.

4 TAPE IR TRANSMITTER TO BACK OF PANEL-COVER, BRACKET USING TAPE 8363-01-000.

3. WHERE WIRES PASS THROUGH HOLES IN STEEL AND NOT OTHERWISE PROTECTED, USE GROMMET 92908-02-000.

2. ALL WIRES TO BE SECURED WITH CLAMP 10495-01-000 OR CLIP 80734-01-000 EVERY 600 MM. USE SCREW G67-10-12U UNLESS OTHERWISE SPECIFIED.

1. 110V WIRE TO BE CLAMPED WITH CLAMP 10497-05-000 WITHIN 200MM OF OUTLET BOXES, USE SCREW G67-10-12U.

NOTES:

8

7

6

5

4

3

2

1

A

FOR ELECTRICAL
TORQUE
SPECIFICATIONS
SEE DWG NO.
128783-01-000

X-X

FOR ELECTRICAL
CALLOUTS
SEE DWG NO.
121339-01-000

68R TV - FRONT
1H5 TV, FRONT-WITHOUT
265 CODES/STANDARDS-CSA/CMVSS
1B1 CODES/STANDARDS USA

1B1 265

WINNEBAGO
COPYRIGHT 2016 WINNEBAGO INDUSTRIES, INC.

DSNR:		ALL DIMENSIONS ARE IN MILLIMETERS
DFFR:		
UNSPECIFIED TOLERANCES:		MATERIAL:
WHOLE DIM (X)	: 3	
ONE-PLACE (X.X)	: 1.5	
TWO-PLACE (X.XX)	: 0.50	
ANGLE	: 1°	

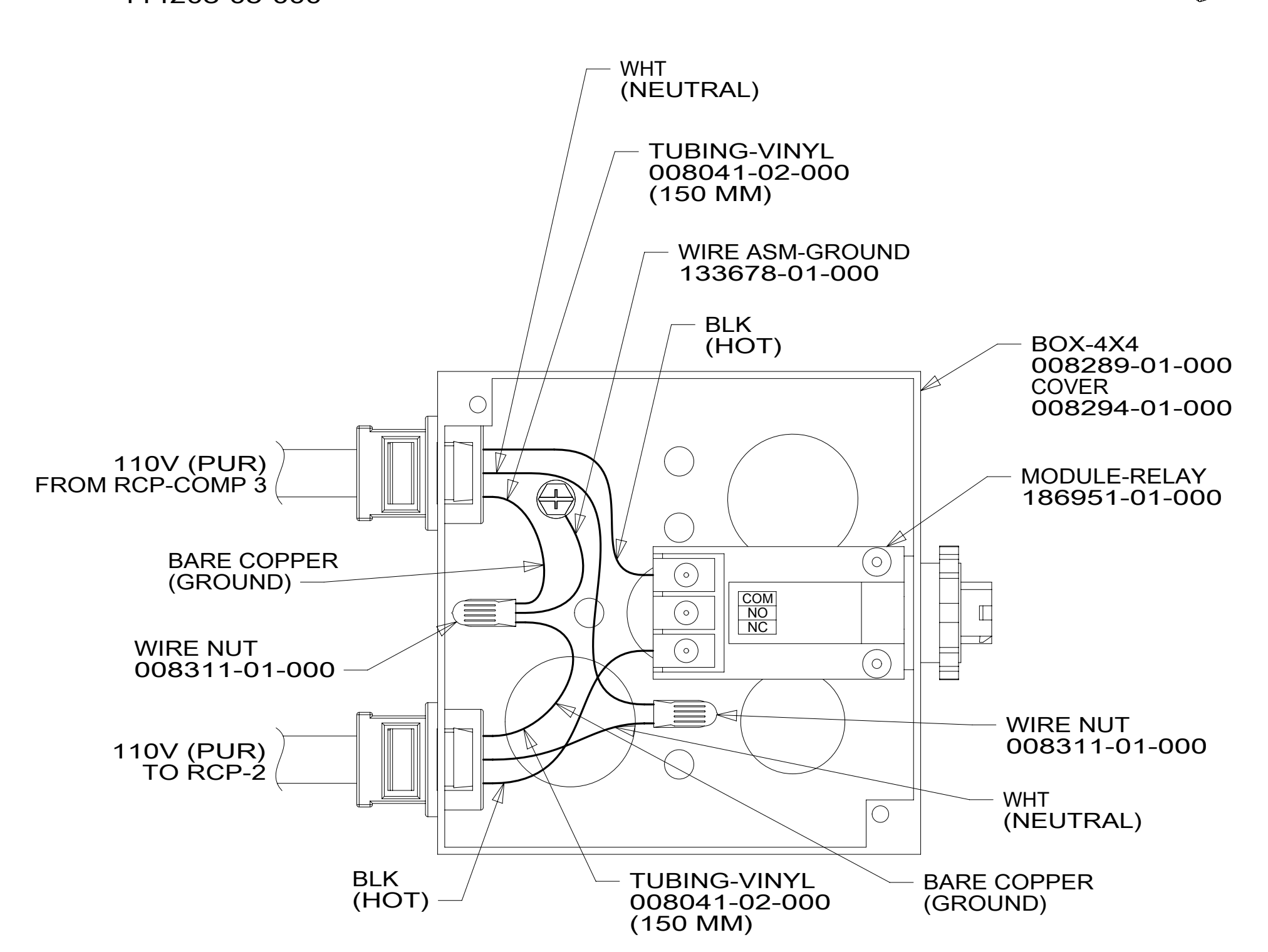
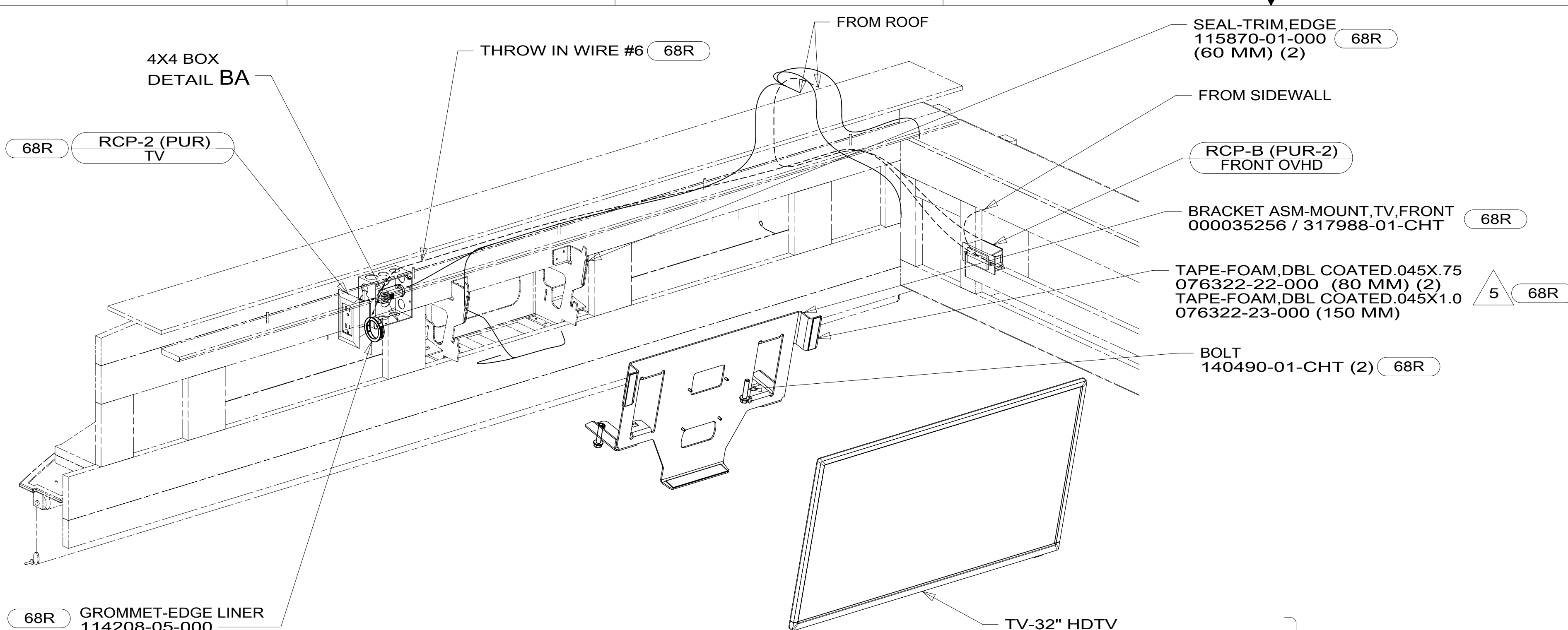
REFER TO ES0018 FOR FASTENER TIGHTENING GUIDELINES

WEIGHT: (LBS)

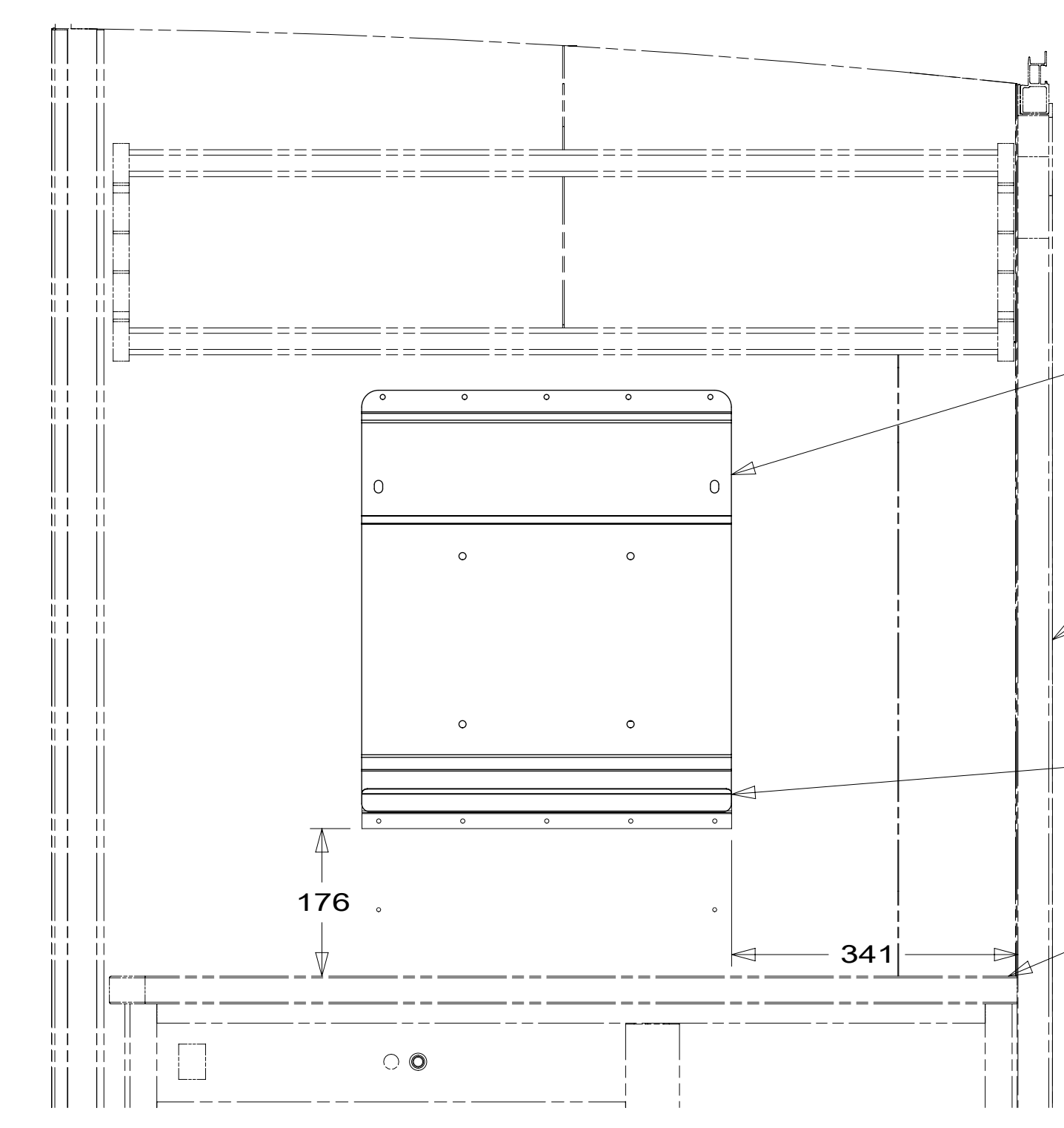
FIRST USED:
17 E35BDESCRIPTION: **WIRING INSTL-TV/DVD**

SHEET: 1 OF 4 ITEM/PART NO: 000015261 / 31286001000 REV:

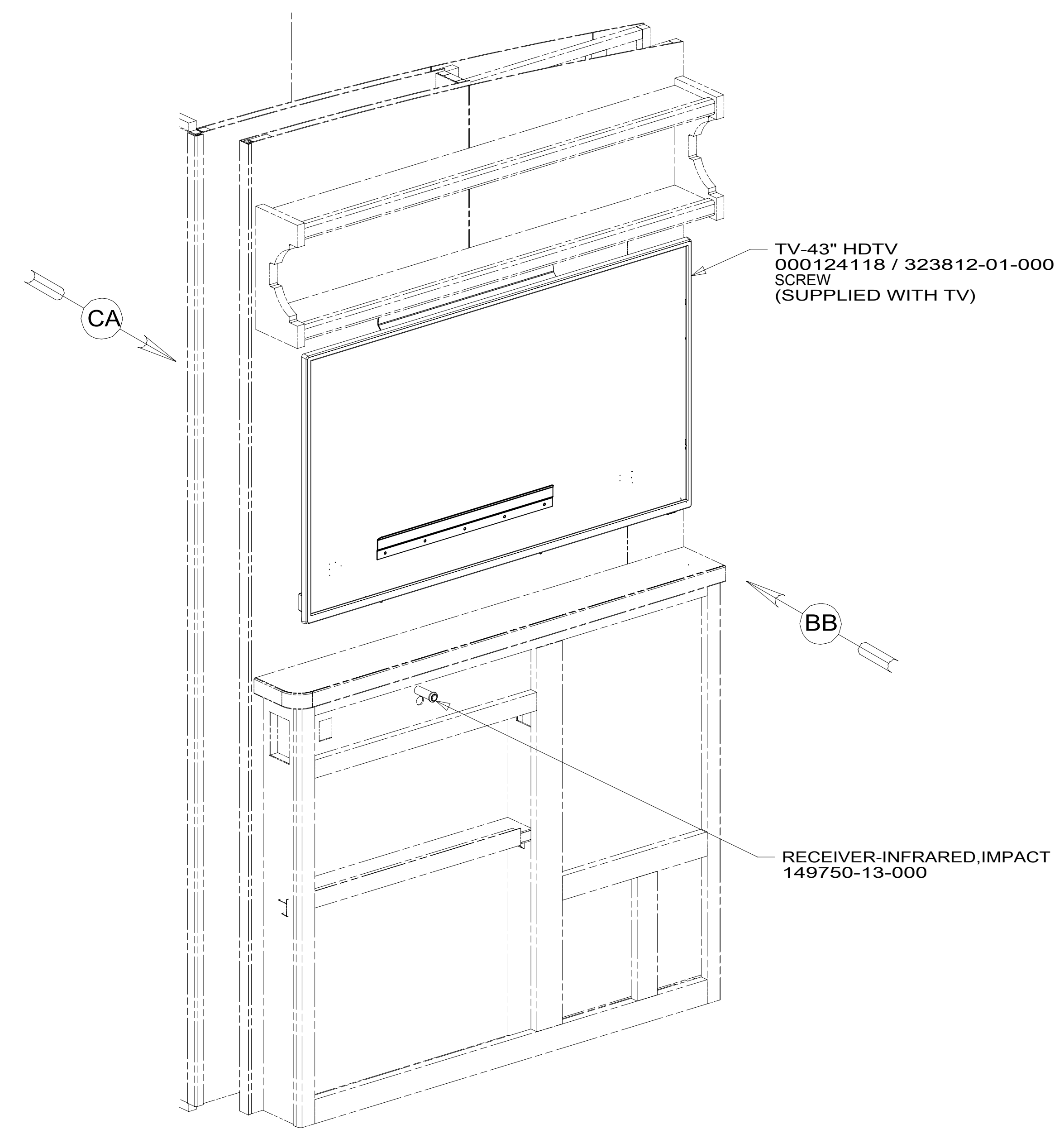
REF: 1 07-Nov-2017



DETAIL BA 68R



VIEW BB (TV NOT SHOWN)



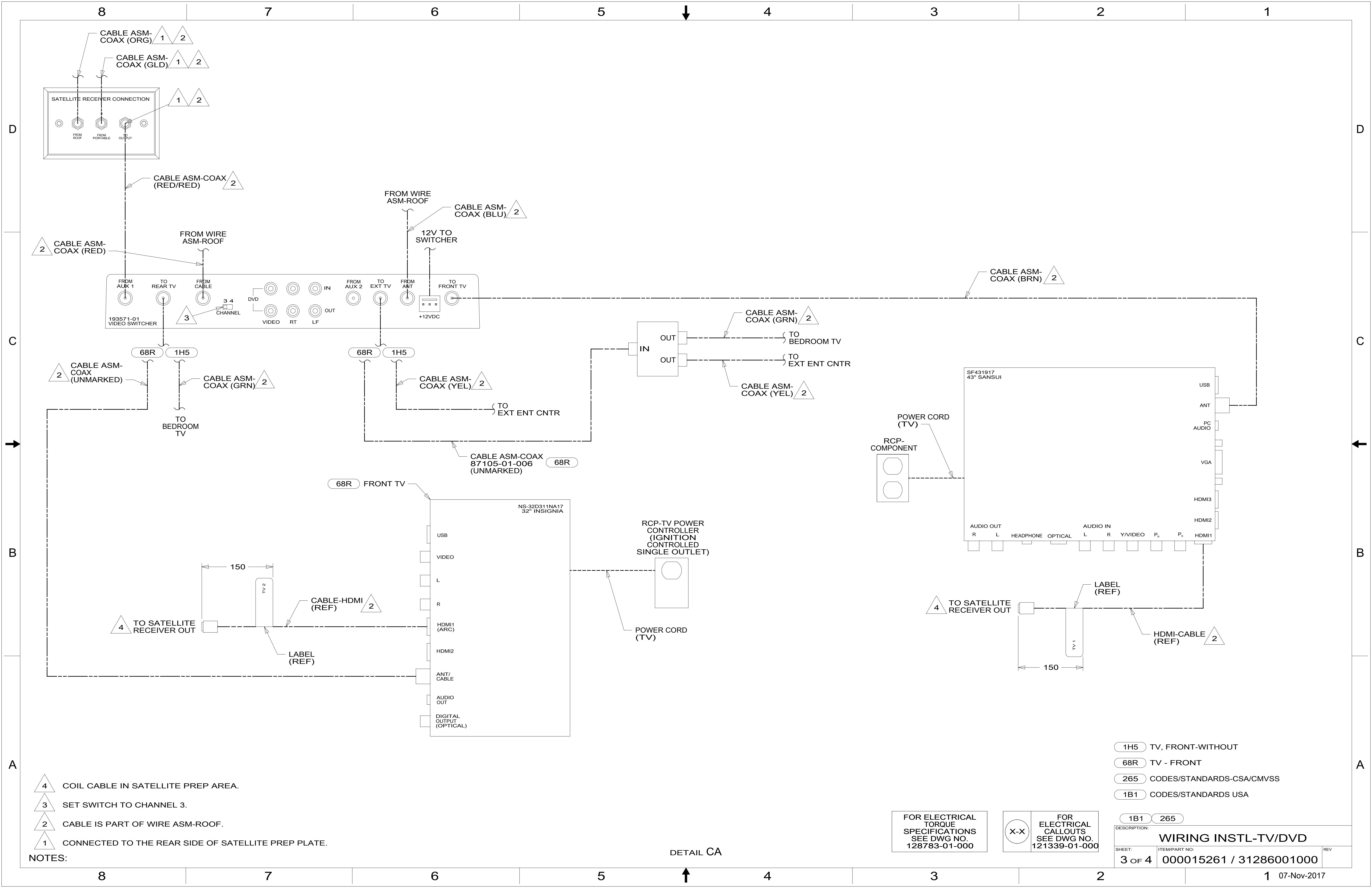
- NOTES:
- 6 SEE LOAD CENTER/ATS ASM FOR ADDITIONAL INFORMATION.
 - 5 PREP SURFACE WITH 87211-01-000.
 - 4 ROUTE 110V & 12V IN OPPOSITE ENDS OF ELECTRICAL BOX.
 - 3. WHERE WIRES PASS THROUGH HOLES IN STEEL AND NOT OTHERWISE PROTECTED, USE GROMMET 92908-02-000.
 - 2. ALL WIRES TO BE SECURED WITH CLAMP 10495-01-000 OR CLIP 80734-01-000 EVERY 600MM. USE SCREW G67-10-12B UNLESS OTHERWISE SPECIFIED.
 - 1. 110V WIRE TO BE CLAMPED WITH CLAMP 10497-05-000 WITHIN 200MM OF OUTLET BOXES, USE SCREW G67-10-12B.

FOR ELECTRICAL TORQUE SPECIFICATIONS SEE DWG NO. 128783-01-000

FOR ELECTRICAL CALLOUTS SEE DWG NO. 121339-01-000

- 68R TV - FRONT
- 265 CODES/STANDARDS-CSA/CMVSS
- 1B1 CODES/STANDARDS USA

DESCRIPTION:		1B1 265	
WIRING INSTL-TV/DVD			
SHEET:	ITEM/PART NO.:	REV:	
2 OF 4	000015261 / 31286001000		



- NOTES:
- 4 COIL CABLE IN SATELLITE PREP AREA.
 - 3 SET SWITCH TO CHANNEL 3.
 - 2 CABLE IS PART OF WIRE ASM-ROOF.
 - 1 CONNECTED TO THE REAR SIDE OF SATELLITE PREP PLATE.

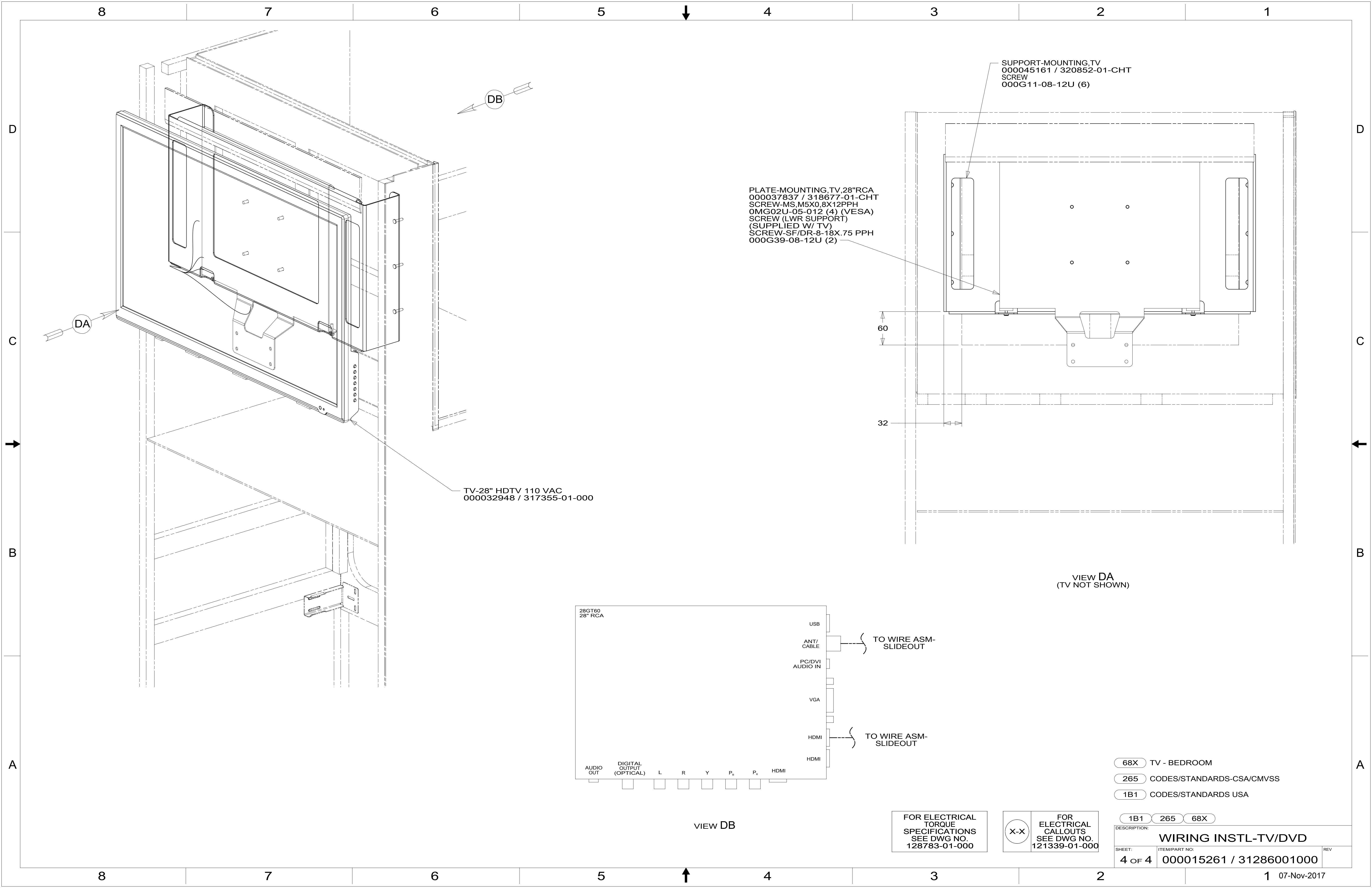
- 1H5 TV, FRONT-WITHOUT
- 68R TV - FRONT
- 265 CODES/STANDARDS-CSA/CMVSS
- 1B1 CODES/STANDARDS USA

FOR ELECTRICAL TORQUE SPECIFICATIONS SEE DWG NO. 128783-01-000

FOR ELECTRICAL CALLOUTS SEE DWG NO. 121339-01-000

DESCRIPTION:		1B1 265	
WIRING INSTL-TV/DVD			
SHEET:	ITEM/PART NO.:	REV	
3 OF 4	000015261 / 31286001000		

DETAIL CA



DB

DA

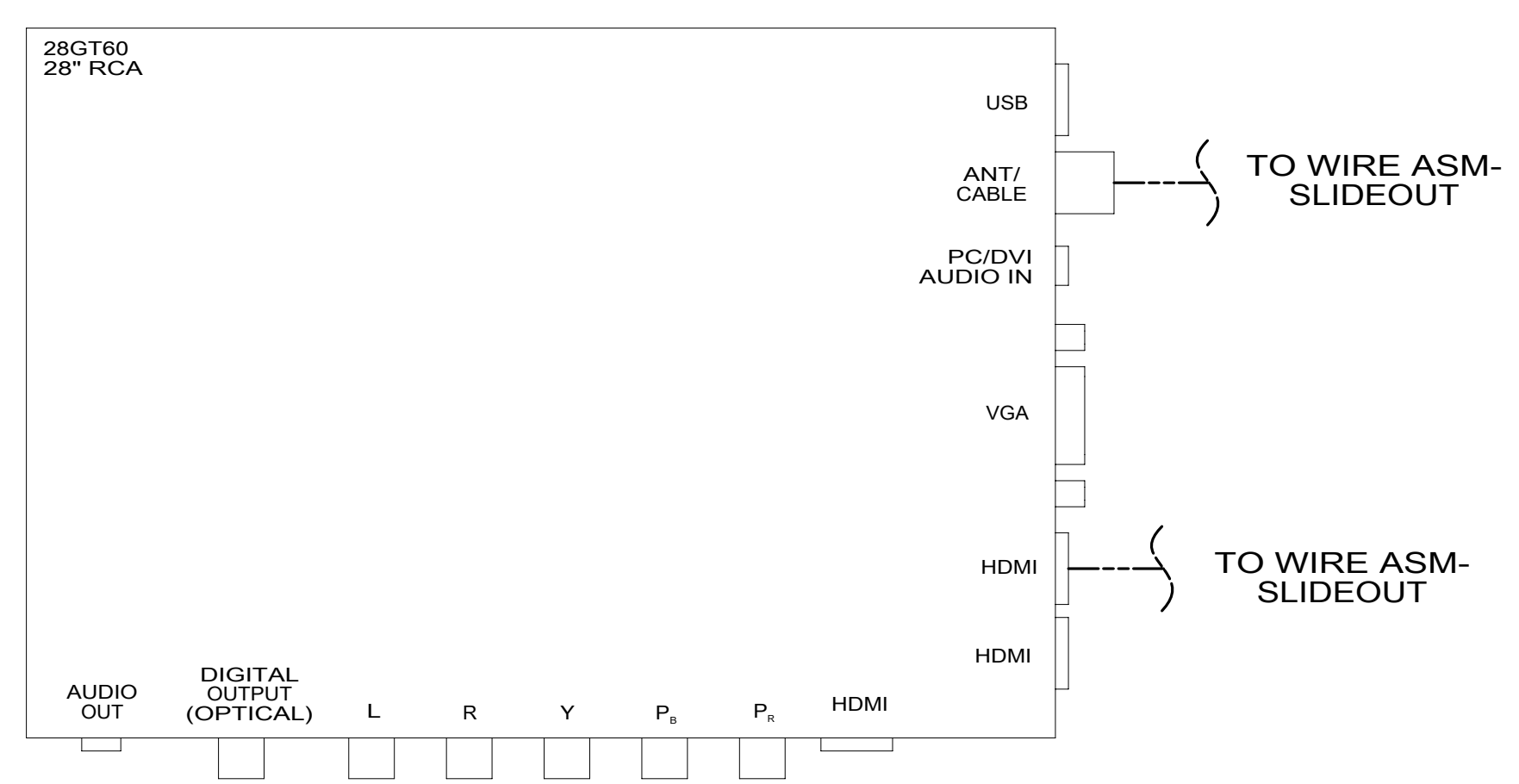
PLATE-MOUNTING-TV,28"RCA
 000037837 / 318677-01-CHT
 SCREW-MS,M5X0,8X12PPH
 0MG02U-05-012 (4) (VESA)
 SCREW (LWR SUPPORT)
 (SUPPLIED W/ TV)
 SCREW-SF/DR-8-18X,75 PPH
 000G39-08-12U (2)

SUPPORT-MOUNTING-TV
 000045161 / 320852-01-CHT
 SCREW
 000G11-08-12U (6)

TV-28" HDTV 110 VAC
 000032948 / 317355-01-000

60
 32

VIEW DA
 (TV NOT SHOWN)



VIEW DB

- 68X TV - BEDROOM
- 265 CODES/STANDARDS-CSA/CMVSS
- 1B1 CODES/STANDARDS USA

FOR ELECTRICAL TORQUE SPECIFICATIONS SEE DWG NO. 128783-01-000

FOR ELECTRICAL CALLOUTS SEE DWG NO. 121339-01-000

DESCRIPTION:	1B1 265 68X	
WIRING INSTL-TV/DVD		
SHEET:	ITEM/PART NO:	REV
4 OF 4	000015261 / 31286001000	